

## General Information

Location: ZACATECAS MEX  
ICAO/IATA: MMZC / ZCL  
Lat/Long: N22° 53.8', W102° 41.1'  
Elevation: 7126 ft

Airport Use: Public  
Daylight Savings: Not Observed  
UTC Conversion: +6:00 = UTC  
Magnetic Variation: 8.0° E

Fuel Types: 100-130 Octane, Jet A  
Customs: Yes  
Airport Type: IFR  
Landing Fee: No  
Control Tower: Yes  
Jet Start Unit: No  
LLWS Alert: No  
Beacon: Yes

Sunrise: 1231 Z  
Sunset: 0113 Z

## Runway Information

Runway: 02  
Length x Width: 9843 ft x 148 ft  
Surface Type: asphalt  
TDZ-Elev: 7127 ft  
Lighting: Edge

Runway: 20  
Length x Width: 9843 ft x 148 ft  
Surface Type: asphalt  
TDZ-Elev: 7119 ft  
Lighting: Edge

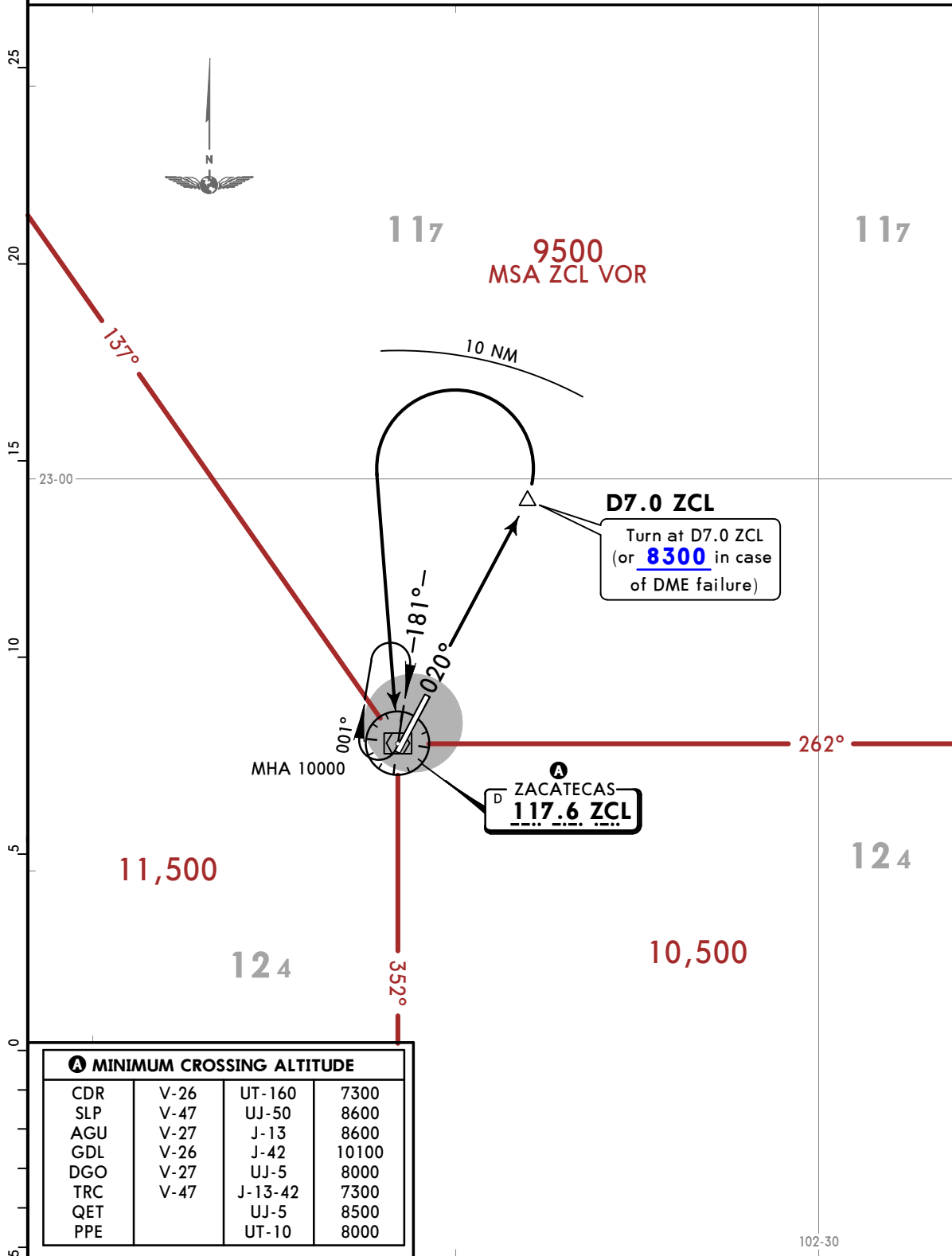
## Communication Information

Zacatecas Tower: 118.000  
Mexico Control ACC: 123.900 RCO

**MMZC/ZCL** **JEPPESEN** **ZACATECAS, MEXICO**  
**GEN LEOBARDO C RUIZ INTL** 6 AUG 21 **10-3** **Eff 12 Aug** **SID**

Apt Elev 7141	Trans alt: 18500
------------------	------------------

**ZACATECAS 2A DEPARTURE**  
**(ZCL2A)**  
**(RWY 02)**



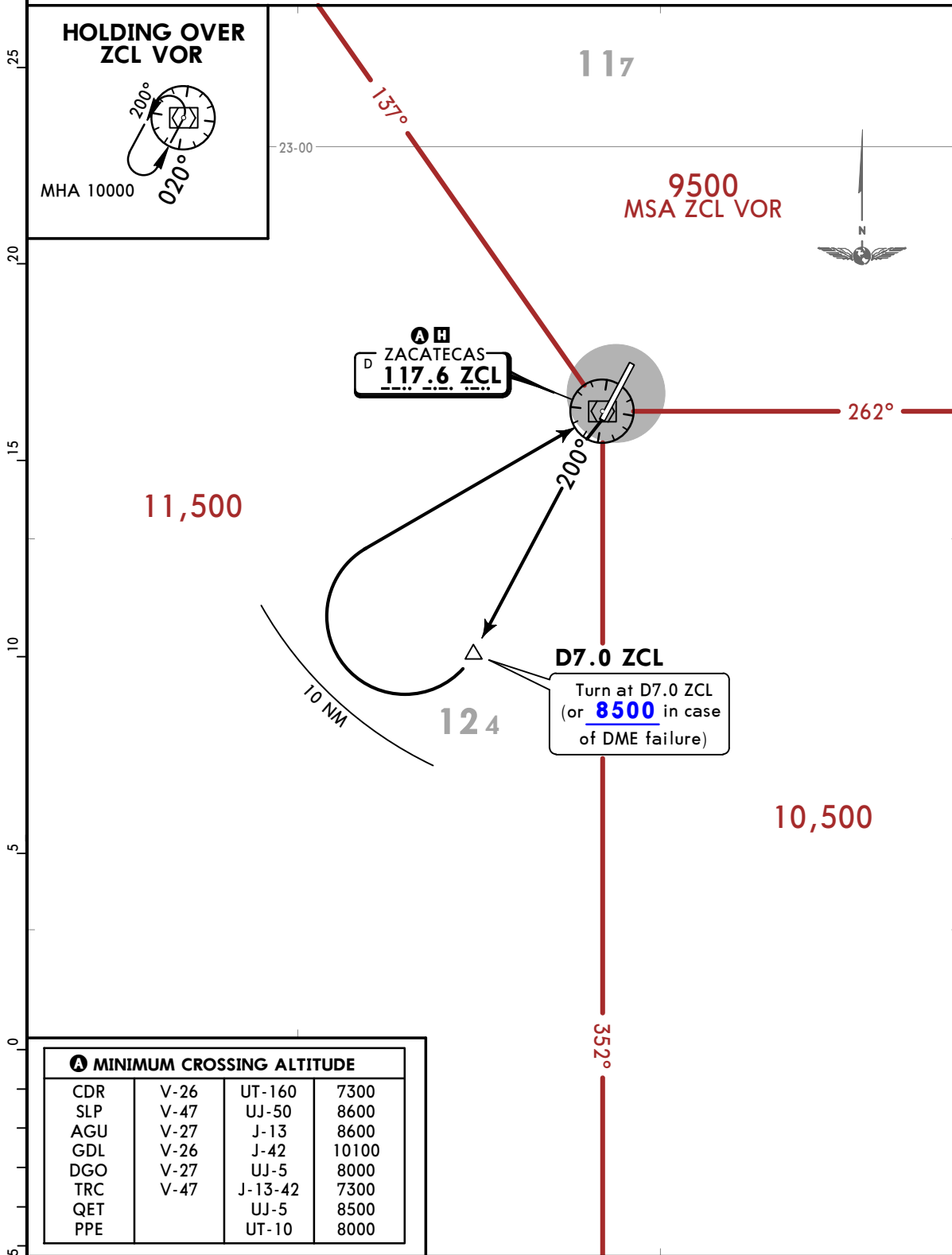
**INITIAL CLIMB**

Climb on ZCL R020 to D7.0 ZCL (or 8300 in case of DME failure), then turn LEFT within 10 NM to ZCL VOR and depart ZCL VOR in accordance with the minimum altitude **A** of the assigned route or in accordance with ATC instructions.

**MMZC/ZCL** **JEPPESEN** **ZACATECAS, MEXICO**  
**GEN LEOBARDO C RUIZ INTL** 6 AUG 21 **(10-3A)** **Eff 12 Aug** **SID**

Apt Elev 7141	Trans alt: 18500
------------------	------------------

**ZACATECAS 2B DEPARTURE**  
**(ZCL2B)**  
**(RWY 20)**



**INITIAL CLIMB**

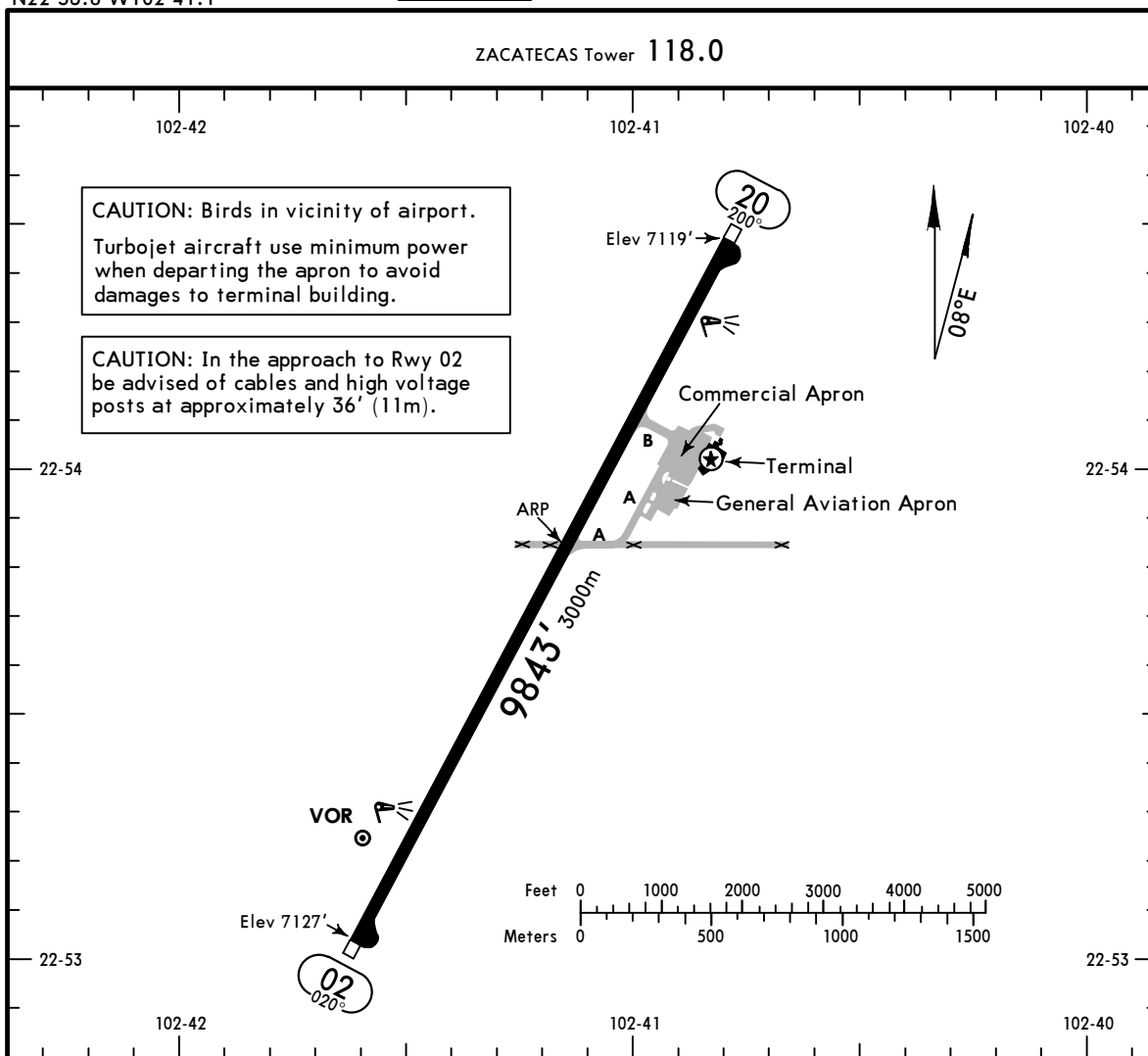
Climb on ZCL R200 to D7.0 ZCL (or 8500 in case of DME failure), then turn RIGHT within 10 NM to ZCL VOR and depart ZCL VOR in accordance with the minimum altitude **A** of the assigned route or in accordance with ATC instructions.

MMZC/ZCL

Apt Elev **7126'**  
N22 53.8 W102 41.1

**JEPPESEN**  
28 OCT 22  
Eff 3 Nov (10-9)

**ZACATECAS, MEXICO**  
GEN LEOBARDO C RUIZ INTL



ADDITIONAL RUNWAY INFORMATION

RWY		USABLE LENGTHS			WIDTH
		LANDING BEYOND Threshold	Glide Slope	TAKE-OFF	
02 20	HIRL REIL PAPI-L (angle 3.0°)				148' 45m

TAKE-OFF		FOR FILING AS ALTERNATE
All Rwys		
1 & 2 Eng	500-1	A B C D 800-2
3 & 4 Eng	300-1	

MMZC/ZCL

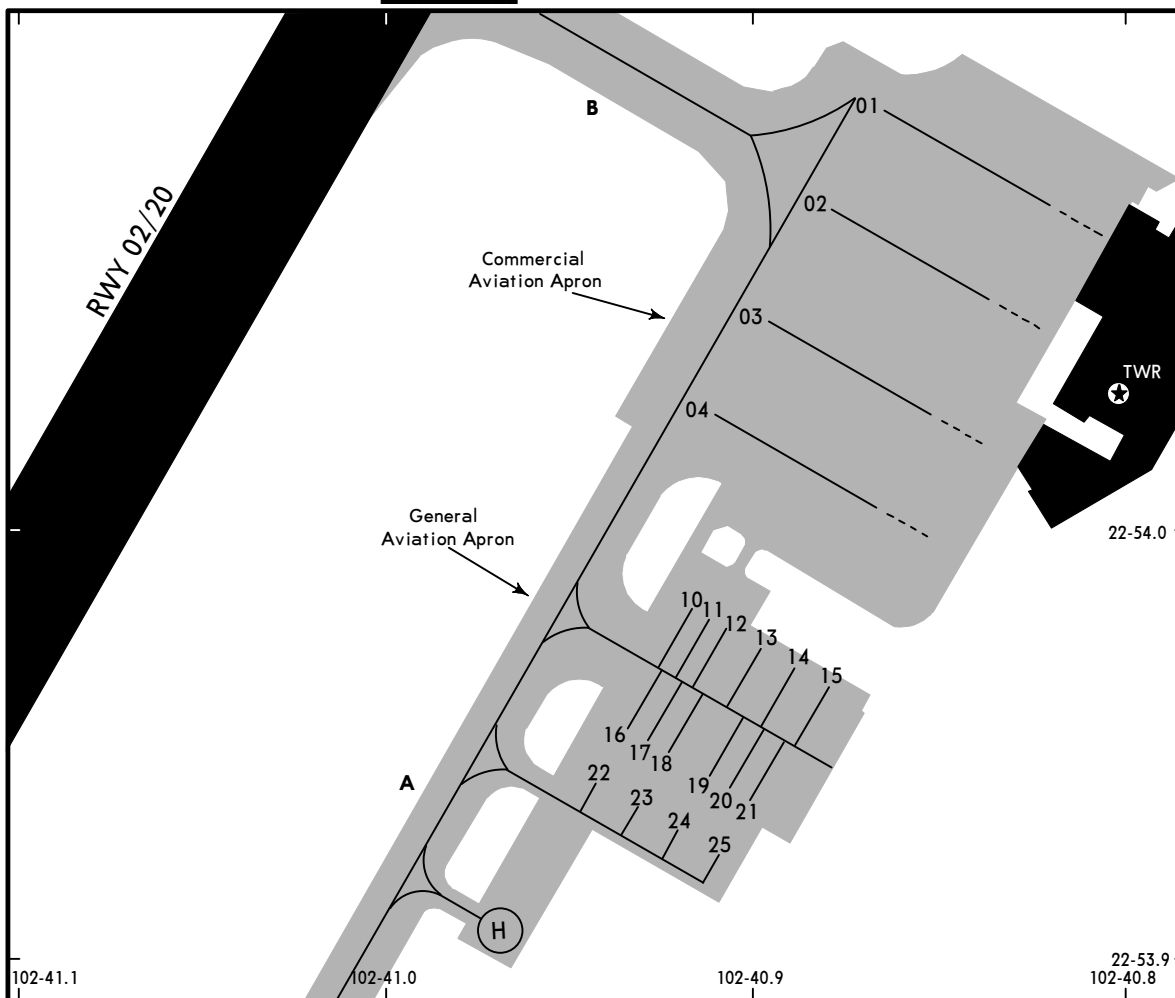
JEPPESEN

ZACATECAS, MEXICO

28 OCT 22  
Eff 3 Nov

10-9A

GEN LEOBARDO C RUIZ INTL



**PARKING SPOT COORDINATES**

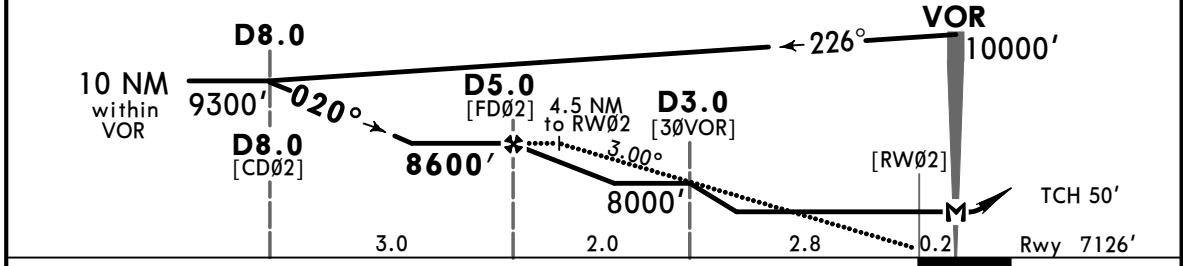
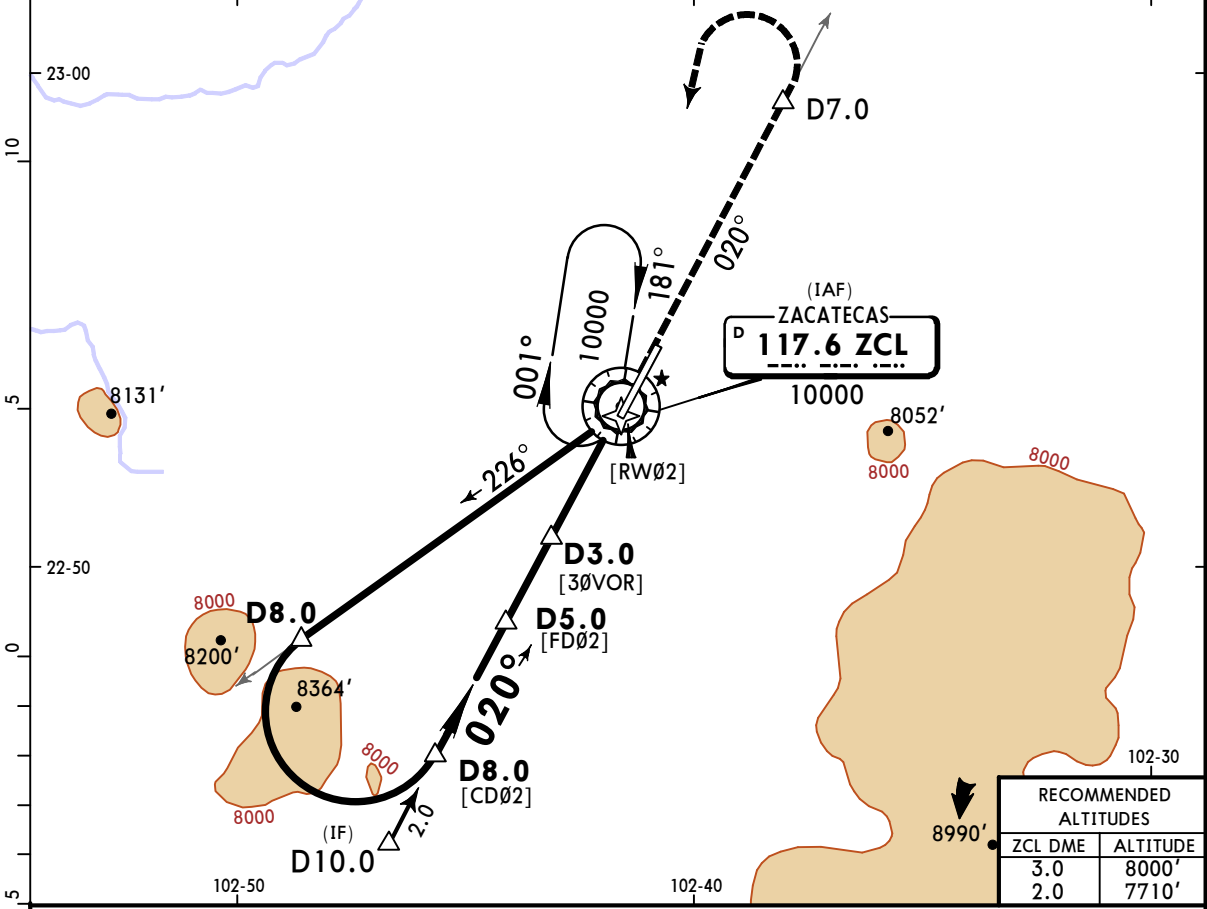
SPOT No.	COORDINATES	SPOT No.	COORDINATES
<b>Commercial Aviation Apron</b>		<b>General Aviation Apron</b>	
01 thru 04	N22 54.0 W102 40.9	10 thru 15 16 thru 25	N22 54.0 W102 40.9 N22 53.9 W102 40.9

**MMZC/ZCL**  
**GEN LEOBARDO C RUIZ INTL**

**JEPPesen**  
 28 OCT 22 (13-1) Eff 3 Nov

**ZACATECAS, MEXICO**  
**VOR DMÉ Rwy 02**

MEXICO Approach (R)				ZACATECAS Tower		
123.9				118.0		
VOR ZCL <b>117.6</b>	Final Apch Crs <b>020°</b>	D5.0 <b>8600'</b> (1474')	MDA(H) <b>7660'</b> (534')	Apt Elev 7126' Rwy 7126'		
<b>MISSED APCH:</b> Climb via ZCL VOR R-020 outbound to D7.0, turn LEFT within 10 NM to ZCL VOR at the minimum holding altitude.						
Alt Set: IN (MB on req)		Trans level: FL 195		Trans alt: 18500'		MSA ZCL VOR



Gnd speed-Kts	70	90	100	120	140	160
Descent Angle 3.00°	372	478	531	637	743	849
MAP at VOR						
FAF to MAP	5.0	4:17	3:20	3:00	2:30	2:09

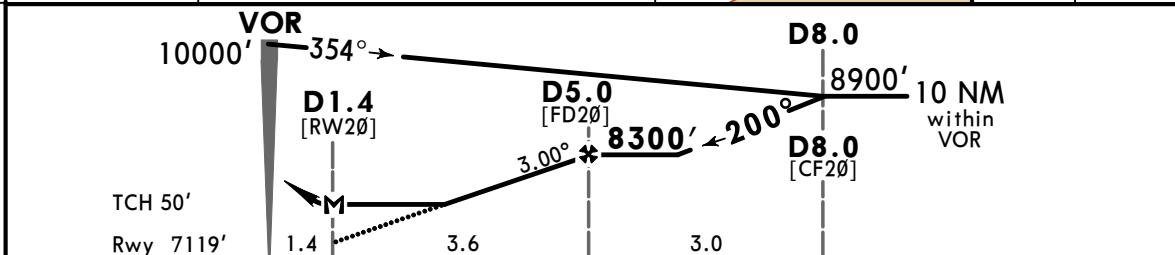
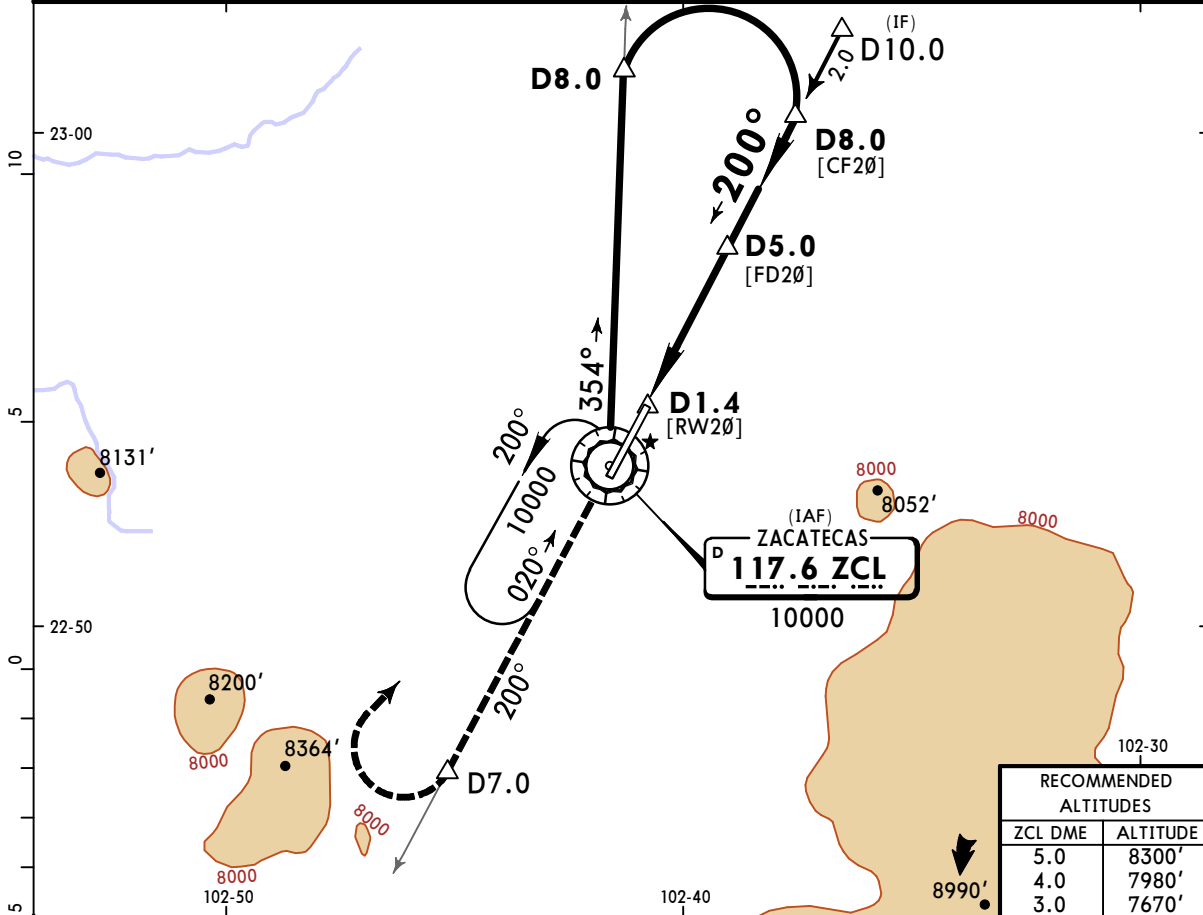
REIL PAPI-L ↑ via **117.6 R-020** **D7.0**

STRAIGHT-IN LANDING RWY 02		CIRCLE-TO-LAND	
MDA(H) <b>7660'</b> (534')		Max Kts	MDA(H)
A	1	90	<b>7700'</b> (574') - 1
B		120	
C	1½	140	<b>7700'</b> (574') - 1½
D	1¾	165	<b>7700'</b> (574') - 2

CHANGES: Procedure revised.

**MMZC/ZCL** **JEPPESEN** **ZACATECAS, MEXICO**  
**GEN LEOBARDO C RUIZ INTL** 28 OCT 22 **13-2** **Eff 3 Nov** **VOR DMÉ Rwy 20**

MEXICO Approach (R)				ZACATECAS Tower	
123.9				118.0	
VOR ZCL <b>117.6</b>	Final Apch Crs <b>200°</b>	D5.0 <b>8300'</b> (1181')	MDA(H) <b>7600'</b> (481')	Apt Elev 7126' Rwy 7119'	
<b>MISSED APCH: Climb via ZCL VOR R-200 outbound to D7.0, turn RIGHT within 10 NM to ZCL VOR at the minimum holding altitude.</b>					
Alt Set: IN (MB on req)		Trans level: FL 195		Trans alt: 18500'	
					MSA ZCL VOR



Gnd speed-Kts	70	90	100	120	140	160	REIL PAPI-L	↑ via <b>117.6</b> <b>D7.0</b> <b>R-200</b>
Descent Angle 3.00°	372	478	531	637	743	849		
MAP at D1.4								
FAF to MAP	3.6	3:05	2:24	2:10	1:48	1:33	1:21	

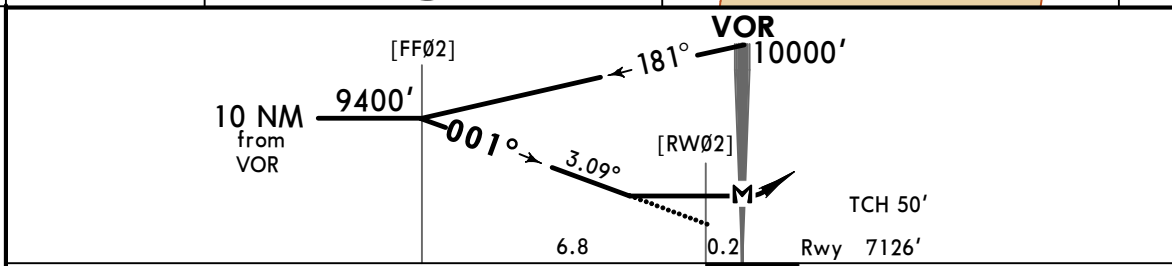
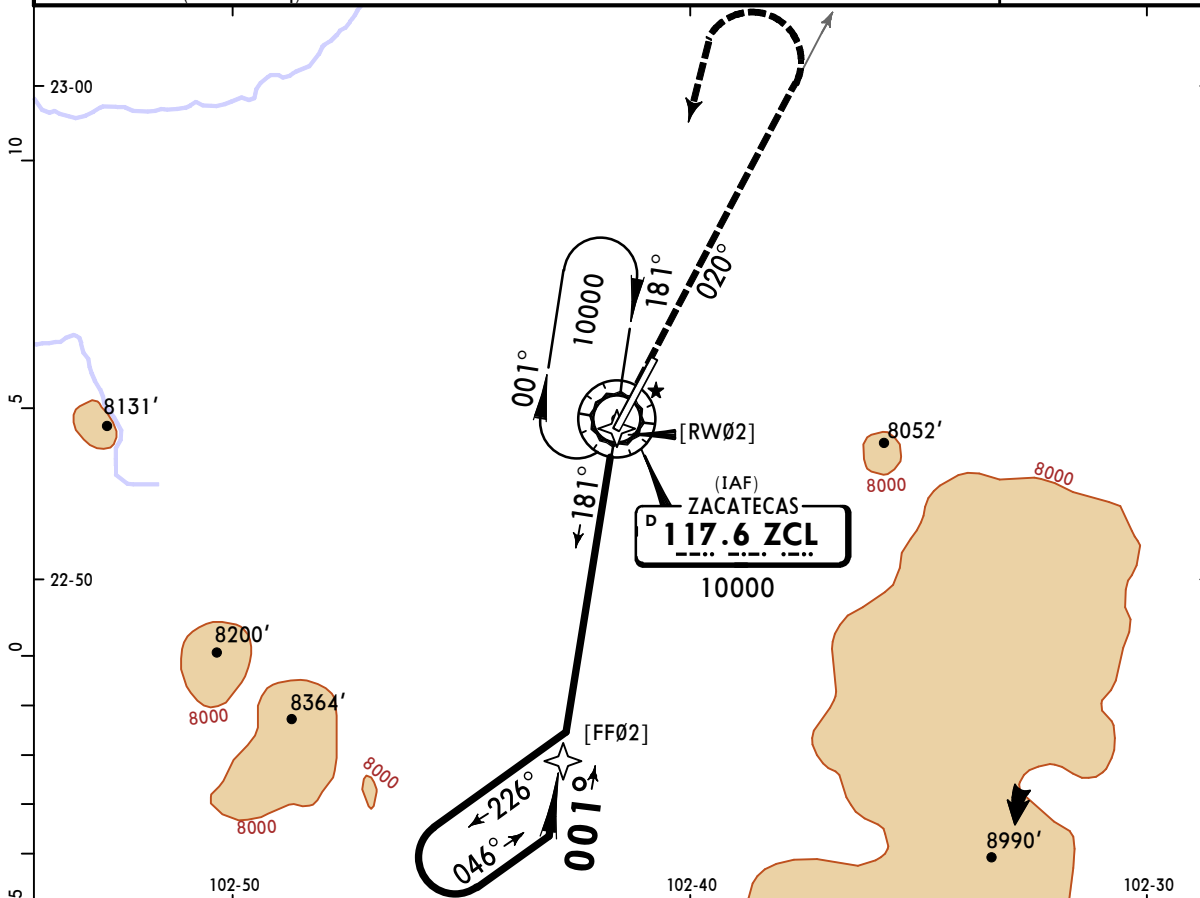
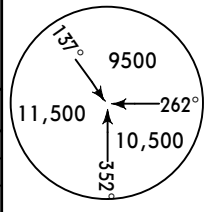
STRAIGHT-IN LANDING RWY20		CIRCLE-TO-LAND	
MDA(H) <b>7600'</b> (481')		Max Kts.	MDA(H)
A	1	90	<b>7700'</b> (574') -1
B	1 ¼	120	<b>7700'</b> (574') -1½
C	1 ½	140	<b>7700'</b> (574') -2
D	1 ½	165	<b>7700'</b> (574') -2

**MMZC/ZCL**  
**GEN LEOBARDO C RUIZ INTL**

**JEPPESEN**  
 28 OCT 22 **13-3** Eff 3 Nov

**ZACATECAS, MEXICO**  
**VOR Rwy 02**

MEXICO Approach (R) <b>123.9</b>			ZACATECAS Tower <b>118.0</b>																		
VOR ZCL <b>117.6</b>	Final Apch Crs <b>001°</b>	No FAF	MDA(H) <b>8000'</b> (874')	Apt Elev 7126' Rwy 7126'																	
<b>MISSED APCH: Climb via ZCL VOR R-020 outbound, turn LEFT within 10NM to ZCL VOR at the minimum holding altitude.</b>																					
MISSED APCH: Max Distance Outbound Track 7 NM																					
<table border="1"> <tr> <td>Gnd speed-Kts</td> <td>80</td> <td>100</td> <td>120</td> <td>140</td> <td>160</td> <td>180</td> <td>200</td> </tr> <tr> <td>Time</td> <td>5:15</td> <td>4:12</td> <td>3:30</td> <td>3:00</td> <td>2:37</td> <td>2:20</td> <td>2:06</td> </tr> </table>						Gnd speed-Kts	80	100	120	140	160	180	200	Time	5:15	4:12	3:30	3:00	2:37	2:20	2:06
Gnd speed-Kts	80	100	120	140	160	180	200														
Time	5:15	4:12	3:30	3:00	2:37	2:20	2:06														
Alt Set: IN (MB on req)		Trans level: FL 195		Trans alt: 18500'																	



Gnd speed-Kts	70	90	100	120	140	160	REIL PAPI-L	ZCL via <b>117.6</b> <b>R-020</b>
Descent Angle 3.09°	383	492	547	656	765	875		
MAP at VOR								

STRAIGHT-IN LANDING RWY02			CIRCLE-TO-LAND		
MDA(H) <b>8000'</b> (874')			Max Kts	MDA(H)	
A	1		90	<b>8000'</b> (874') - 1	
B	1¼		120	<b>8000'</b> (874') - 1¼	
C	2½		140	<b>8000'</b> (874') - 2½	
D	2¾		165	<b>8000'</b> (874') - 2¾	

CHANGES: Apt elev, rwy elev, minimums.

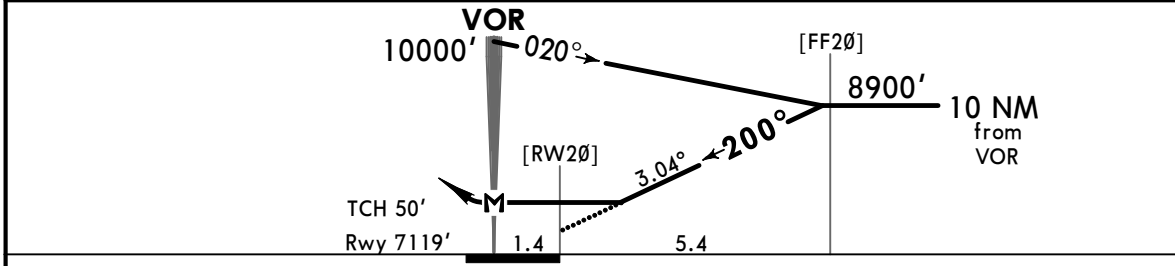
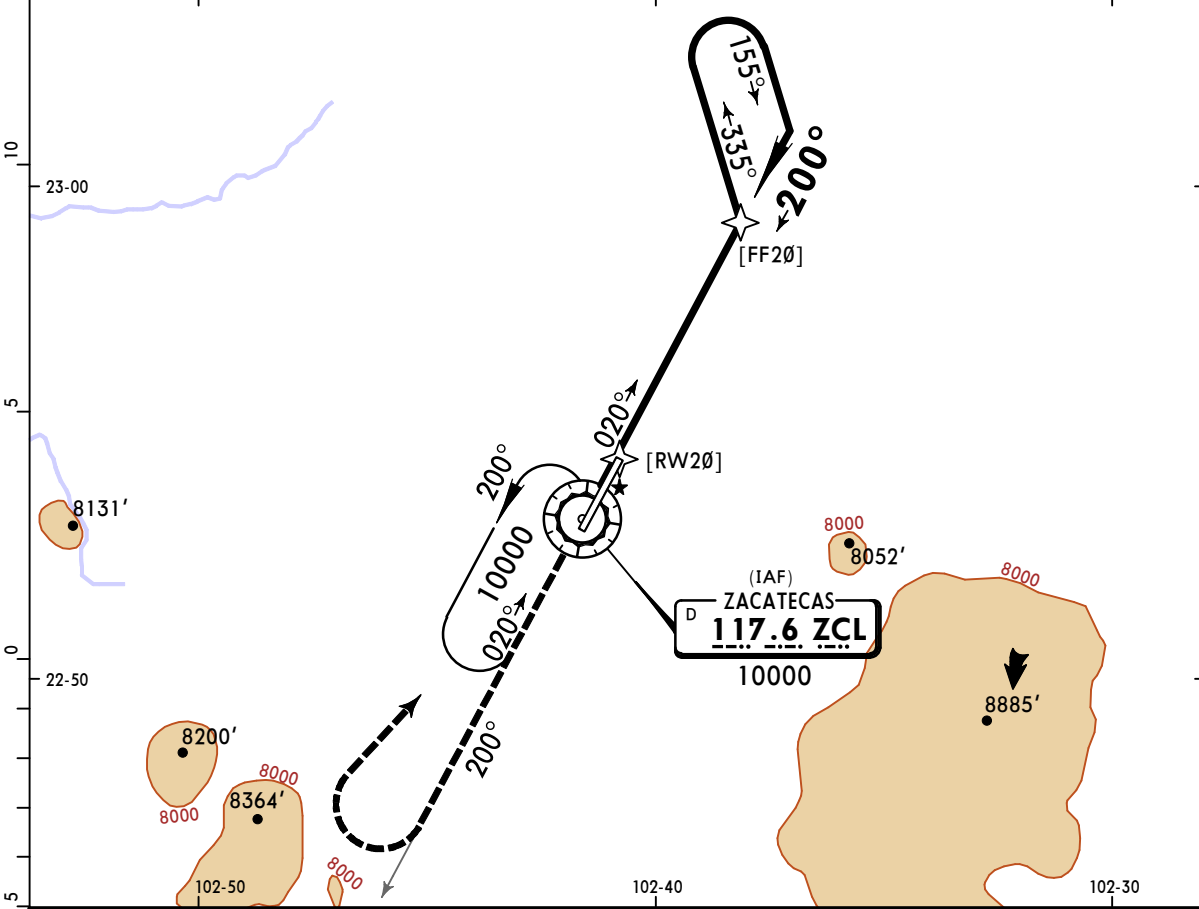


**MMZC/ZCL**  
**GEN LEOBARDO C RUIZ INTL** 28 OCT 22

**JEPPESEN**  
**(13-4) Eff 3 Nov**

**ZACATECAS, MEXICO**  
**VOR Rwy 20**

MEXICO Approach (R) <b>123.9</b>			ZACATECAS Tower <b>118.0</b>																	
VOR ZCL <b>117.6</b>	Final Apch Crs <b>200°</b>	No FAF	MDA(H) <b>7700'</b> (581')	Apt Elev 7126'	Rwy 7119'															
<b>MISSED APCH: Climb via ZCL VOR R-200 outbound, turn RIGHT within 10 NM to ZCL VOR at the minimum holding altitude.</b>																				
<b>MISSED APCH: Max Distance Outbound Track 7 NM</b>																				
<table border="1"> <tr> <td>Gnd speed-Kts</td> <td>80</td> <td>100</td> <td>120</td> <td>140</td> <td>160</td> <td>180</td> <td>200</td> </tr> <tr> <td>Time</td> <td>5:15</td> <td>4:12</td> <td>3:30</td> <td>3:00</td> <td>2:37</td> <td>2:20</td> <td>2:06</td> </tr> </table>						Gnd speed-Kts	80	100	120	140	160	180	200	Time	5:15	4:12	3:30	3:00	2:37	2:20
Gnd speed-Kts	80	100	120	140	160	180	200													
Time	5:15	4:12	3:30	3:00	2:37	2:20	2:06													
Alt Set: IN (MB on req)		Trans level: FL 195		Trans alt: 18500'																



Gnd speed-Kts	70	90	100	120	140	160	REIL PAPI-L	ZCL via <b>117.6</b> <b>R-200</b>
Descent Angle 3.04°	376	484	538	645	753	861		

STRAIGHT-IN LANDING RWY20			CIRCLE-TO-LAND		
MDA(H) <b>7700'</b> (581')			MDA(H)		
A	1	Max Kts 90	7700'(574') - 1		
B	1 1/2	120	7700'(574') - 1 1/2		
C	1 3/4	140	7700'(574') - 1 3/4		
D		165	7700'(574') - 2		