

## General Information

Location: MONTERREY MEX  
ICAO/IATA: MMAN / NTR  
Lat/Long: N25° 51.9', W100° 14.2'  
Elevation: 1476 ft

Airport Use: Public  
Daylight Savings: Not Observed  
UTC Conversion: +6:00 = UTC  
Magnetic Variation: 5.0° E  
Sectional Chart: Brownsville

Fuel Types: 100-130 Octane, Jet A  
Customs: Yes  
Airport Type: IFR  
Landing Fee: No  
Control Tower: Yes  
Jet Start Unit: No  
LLWS Alert: No  
Beacon: Yes

Sunrise: 1313 Z  
Sunset: 2350 Z

## Runway Information

Runway: 02  
Length x Width: 6588 ft x 148 ft  
Surface Type: asphalt  
TDZ-Elev: 1476 ft  
Lighting: Edge  
Displaced Threshold: 236 ft

Runway: 11  
Length x Width: 5049 ft x 148 ft  
Surface Type: asphalt  
TDZ-Elev: 1476 ft  
Lighting: Edge  
Displaced Threshold: 261 ft

Runway: 20  
Length x Width: 6588 ft x 148 ft  
Surface Type: asphalt  
TDZ-Elev: 1452 ft  
Lighting: Edge

Runway: 29  
Length x Width: 5049 ft x 148 ft  
Surface Type: asphalt  
TDZ-Elev: 1476 ft  
Lighting: Edge  
Displaced Threshold: 336 ft

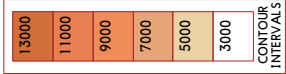
## Communication Information

ATIS: 127.550  
Del Norte Tower: 118.600  
Monterrey Tower: 118.100  
Del Norte Ground: 122.000  
Monterrey Approach: 120.400  
Monterrey Approach: 119.750  
Monterrey Arrival: 120.400  
Monterrey Departure: 119.750  
Monterrey Control ACC: 125.425 RCO  
Del Norte Information: 132.100  
Monterrey Control ACC: 126.400 RCO  
Monterrey Control ACC: 127.400 RCO

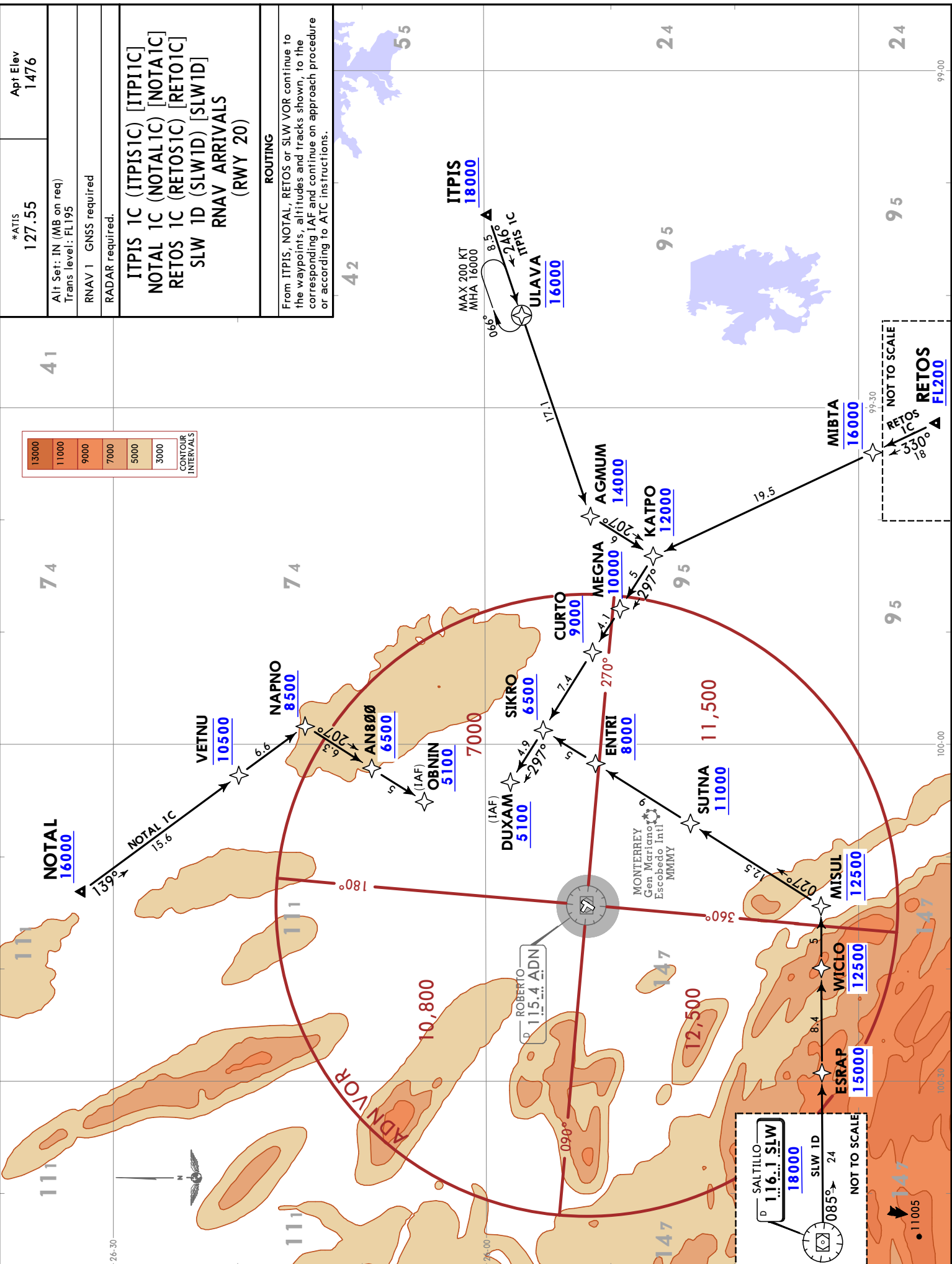
# MONTERREY, MEXICO

RNAV STAR

*ATIS 127.55	Apt Elev 1476
Alt Set: IN (MB on req) Trans level: FL195	
RNAV 1 GNSS required	
RADAR required.	
<b>ITPIS 1C (ITPIS1C) [ITP11C]</b> <b>NOTAL 1C (NOTAL1C) [NOTA1C]</b> <b>RETOS 1C (RETOS1C) [RETO1C]</b> <b>SLW 1D (SLW1D) [SLW1D]</b> <b>RNAV ARRIVALS (RWY 20)</b>	
<b>ROUTING</b> From ITPIS, NOTAL, RETOS or SLW VOR continue to the waypoints, altitudes and tracks shown, to the corresponding IAF and continue on approach procedure or according to ATC instructions.	

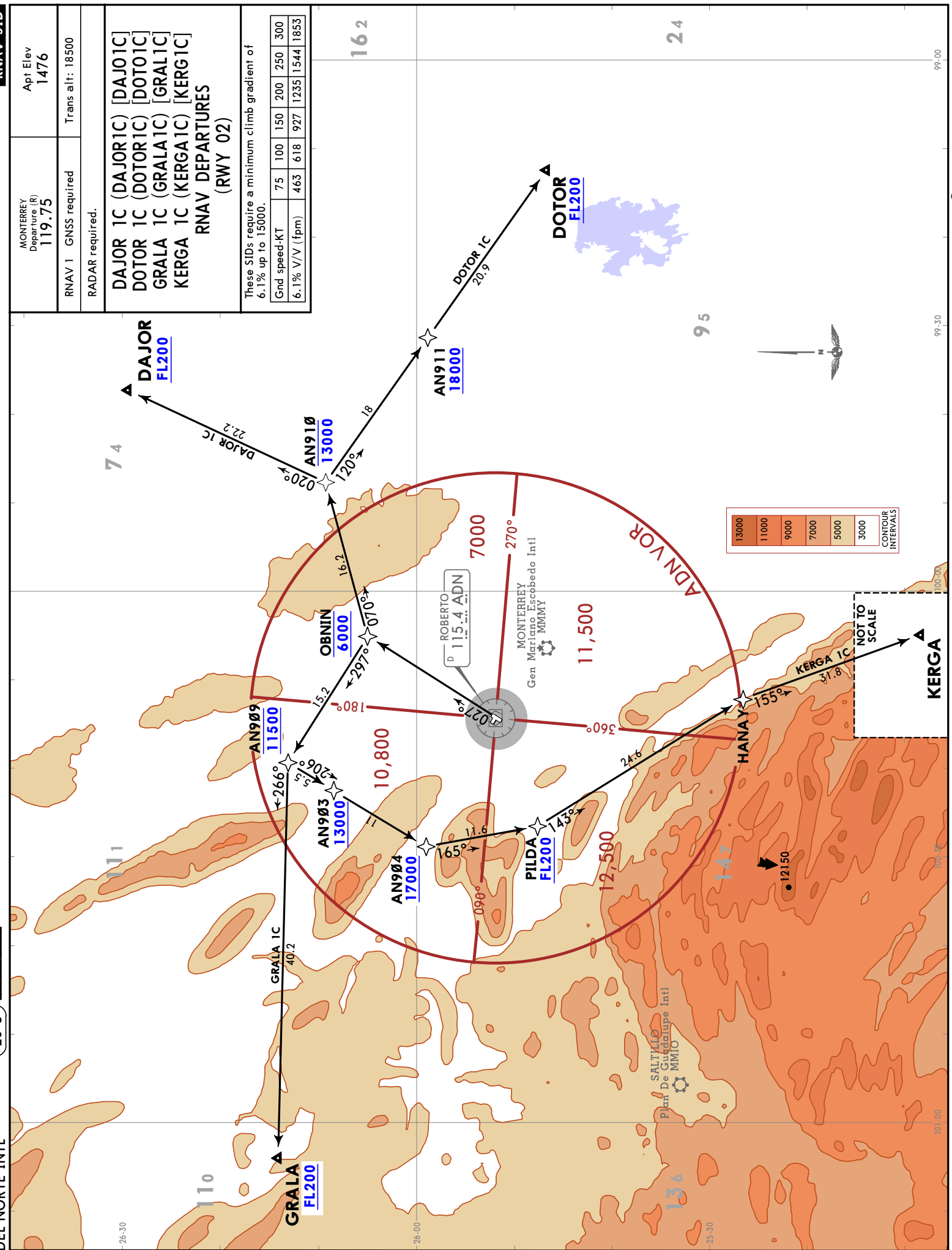


MMAN/NTR  
DEL NORTE INTL  
5 AUG 22  
20-2  
Efl 11 Aug

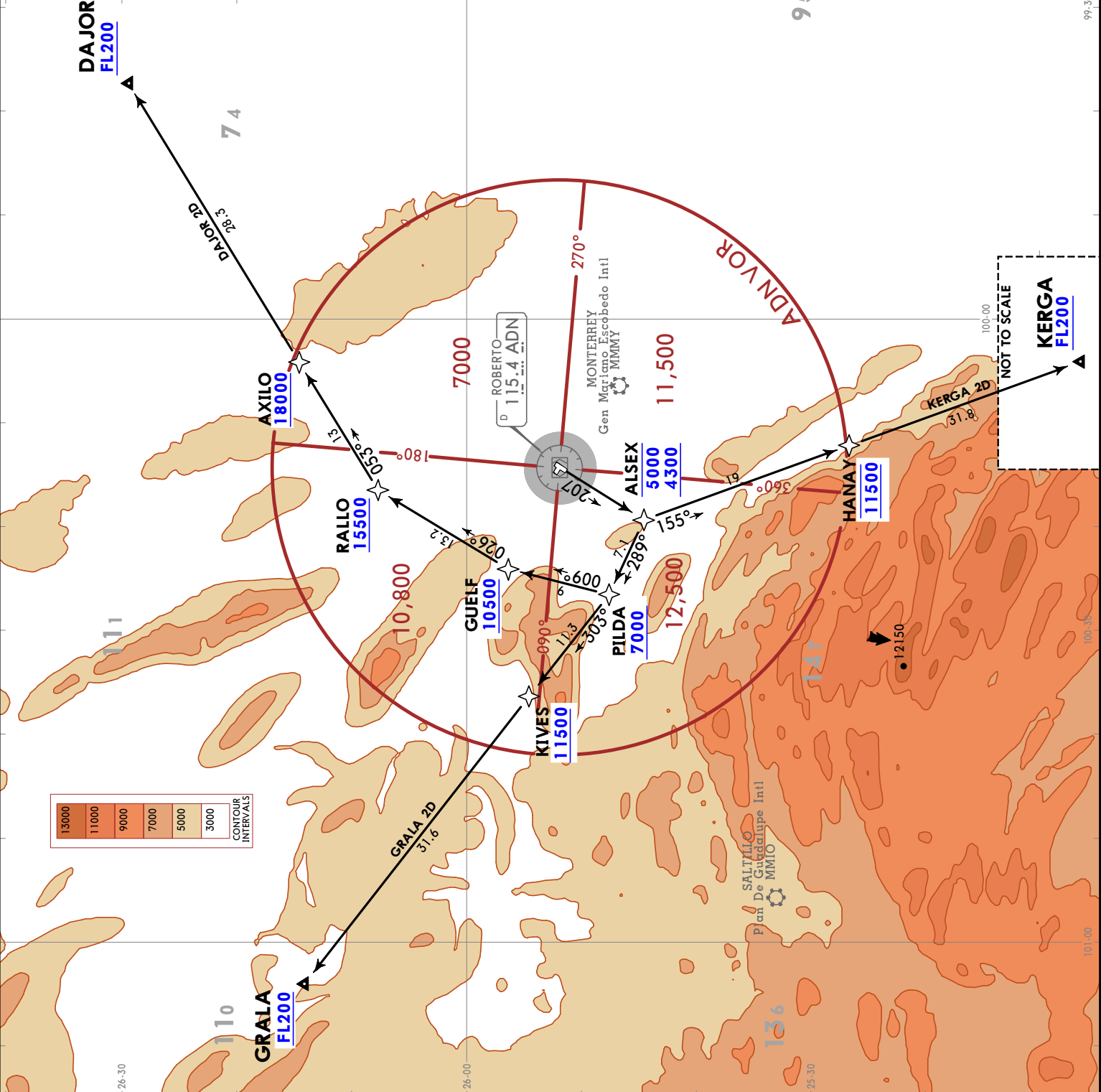


**MONTERREY, MEXICO**  
**RNAV SID**

MONTERREY Departure (R) <b>119.75</b>	Apt Elev <b>1476</b>
RNAV 1 GNSS required	Trans alt: 18500
RADAR required.	
<b>DAJOR 1C (DAJOR1C) [DAJO1C]</b> <b>DOTOR 1C (DOTOR1C) [DOTO1C]</b> <b>GRALA 1C (GRALA1C) [GRAL1C]</b> <b>KERGA 1C (KERGA1C) [KERG1C]</b> <b>RNAV DEPARTURES (RWY 02)</b>	
These SIDs require a minimum climb gradient of 6.1% up to 15000.	
Grnd speed-KT	75 100 150 200 250 300
6.1% V/V (fpm)	463 618 927 1235 1544 1853



MONTERREY Departure (R) 119.75	Apt Elev 1476
RNAV 1 GNSS required RADAR required.	Trans alt: 18500
DAJOR 2D (DAJOR2D) [DAJ02D] GRALA 2D (GRALA2D) [GRAL2D] KERGA 2D (KERGA2D) [KERG2D] RNAV DEPARTURES (RWY 20)	
These SIDs require a minimum climb gradient of 6.4% up to 15000.	
Grnd speed-KT	75   100   150   200   250   300
6.4% V/V (fpm)	486   648   972   1296   1620   1944



NOT TO SCALE

CHANGES: Initial climb text withdrawn, climb gradient revised.

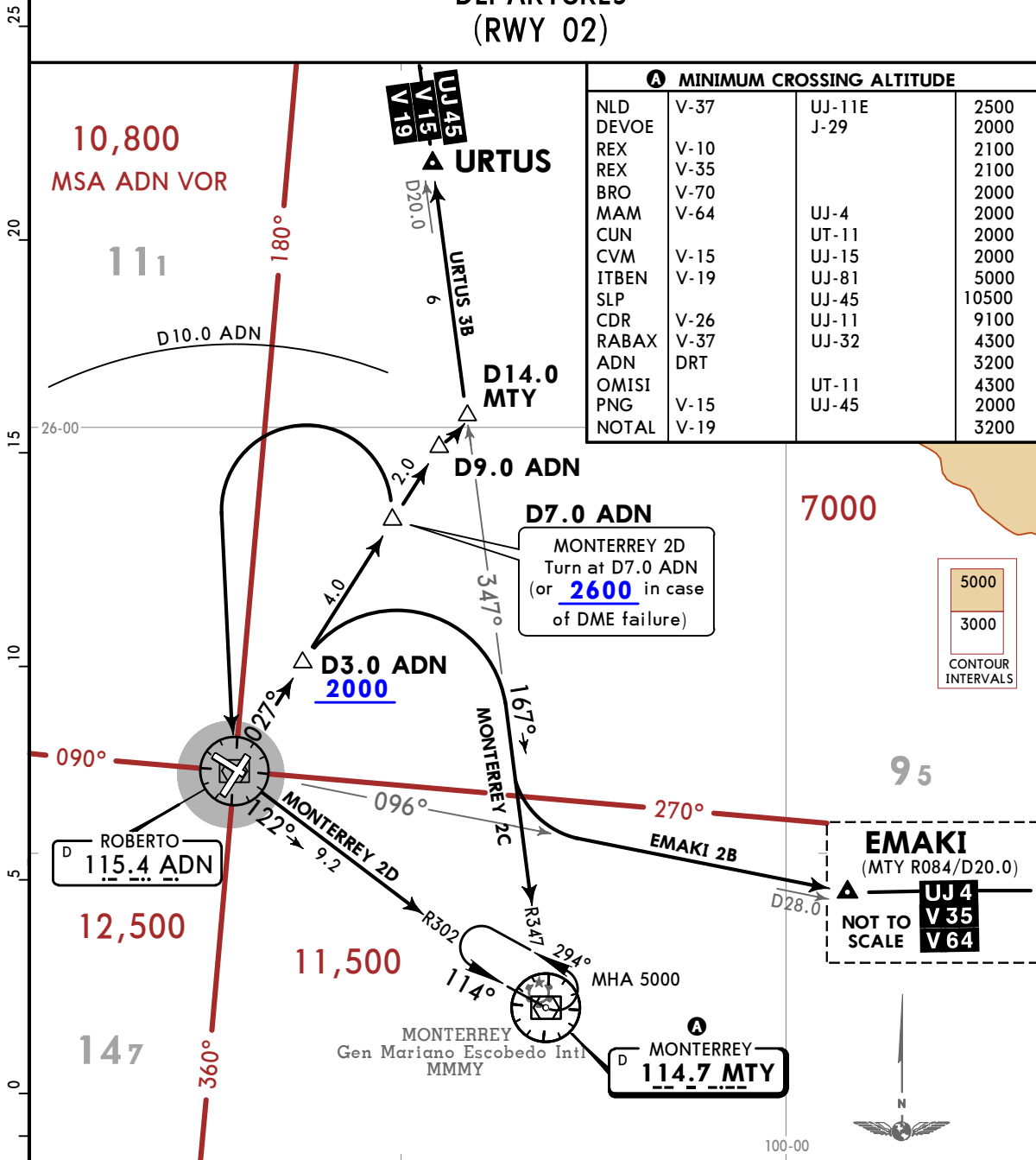
**MMAN/NTR**  
DEL NORTE INTL

**JEPPESEN**  
4 MAR 22 (20-3B)

**MONTERREY, MEXICO**  
**SID**

MONTERREY Departure (R) <b>119.75</b>	Apt Elev <b>1476</b>	Trans alt: 18500
---	-------------------------	------------------

**EMAKI 2B (EMAKI2B) [EMAK2B]**  
**MONTERREY 2C (MTY2C) [MTY2C]**  
**MONTERREY 2D (MTY2D) [MTY2D]**  
**URTUS 3B (URTUS3B) [URTU3B]**  
**DEPARTURES**  
**(RWY 02)**



SID	INITIAL CLIMB
<b>EMAKI 2B</b>	Climb via ADN R027 to D3.0 ADN, then turn RIGHT and intercept ADN R096 to EMAKI and continue on assigned route or ATC instructions.
<b>MONTERREY 2C</b>	Climb via ADN R027 to D3.0 ADN, turn RIGHT and intercept MTY R347 to MTY VOR and cross it according to the MCA <b>A</b> for the assigned route or ATC instructions.
<b>MONTERREY 2D</b>	Climb via ADN R027 to D7.0 ADN (or 2600 in case of DME failure), then turn LEFT within 10 NM to ADN VOR and intercept MTY R302 to MTY VOR and cross it according to the MCA <b>A</b> for the assigned route or ATC instructions.
<b>URTUS 3B</b>	Climb via ADN R027 to D9.0 ADN, then turn LEFT and intercept MTY R347 to URTUS, and continue on the assigned route or ATC instructions.

**MMAN/NTR**  
DEL NORTE INTL

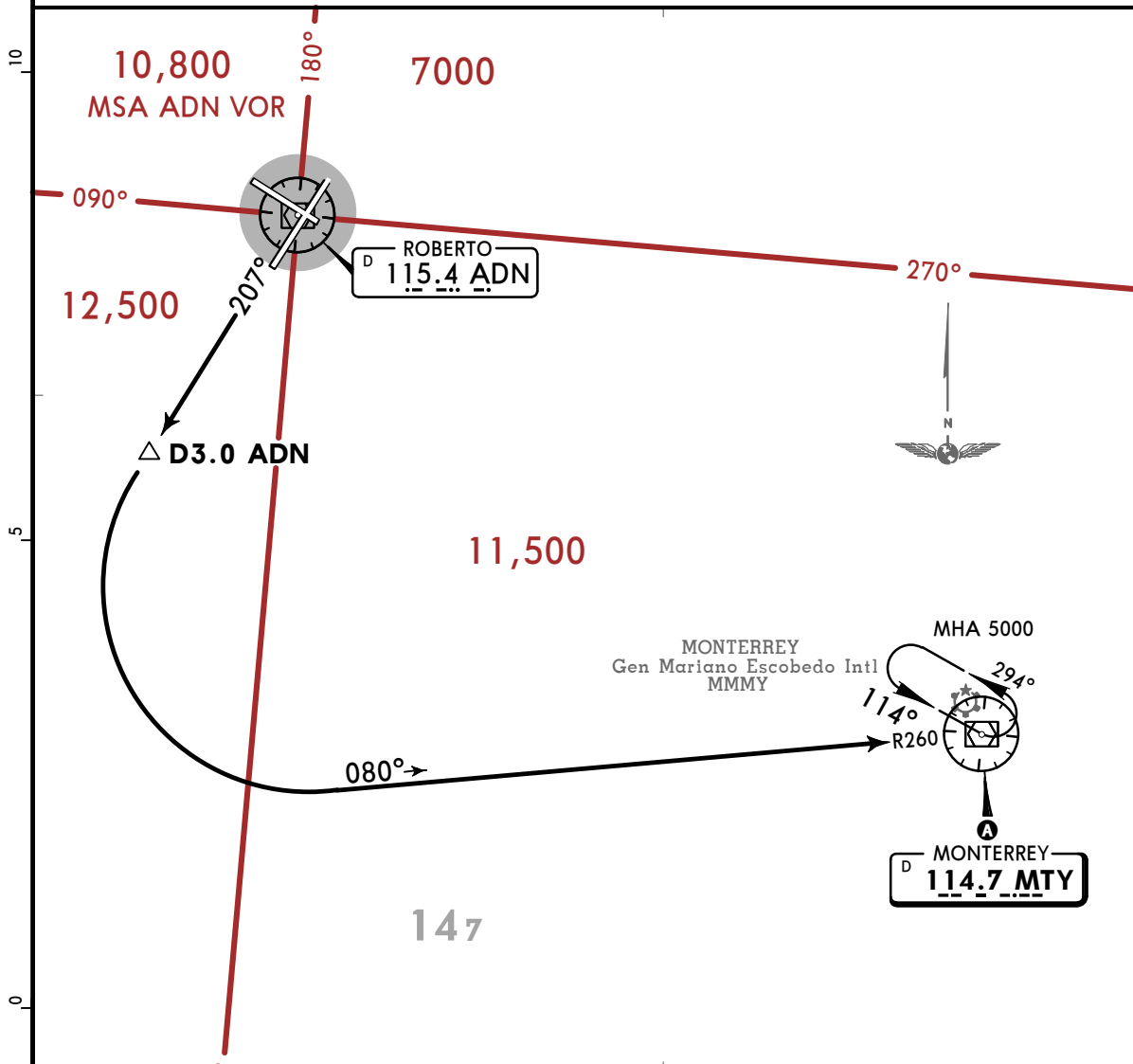
**JEPPESEN**  
4 MAR 22 **(20-3C)**

**MONTERREY, MEXICO**

**SID**

MONTERREY Departure (R) <b>119.75</b>	Apt Elev <b>1476</b>	Trans alt: 18500
---	-------------------------	------------------

**MONTERREY 2E DEPARTURE  
(MTY2E)  
(RWY 20)**



This SID requires a minimum climb gradient of 470 per NM (7.73%) to 4000.

Gnd speed-KT	75	100	150	200	250	300
470 per NM	588	783	1175	1567	1958	2350

A MINIMUM CROSSING ALTITUDE			
NLD	V-37	UJ-11E	2500
DEVOE		J-29	2000
REX	V-10		2100
REX	V-35		2100
BRO	V-70		2000
MAM	V-64	UJ-4	2000
CUN		UT-11	2000
CVM	V-15	UJ-15	2000
ITBEN	V-19	UJ-81	5000
SLP		UJ-45	10500
CDR	V-26	UJ-11	9100
RABAX	V-37	UJ-32	4300
ADN	DRT		3200
OMISI		UT-11	4300
PNG	V-15	UJ-45	2000
NOTAL	V-19		3200

**INITIAL CLIMB**

Climb via ADN R207 to D3.0 ADN, then turn LEFT and proceed on MTY R260 to MTY VOR and cross it according to the MCA A for the assigned route or ATC instructions.

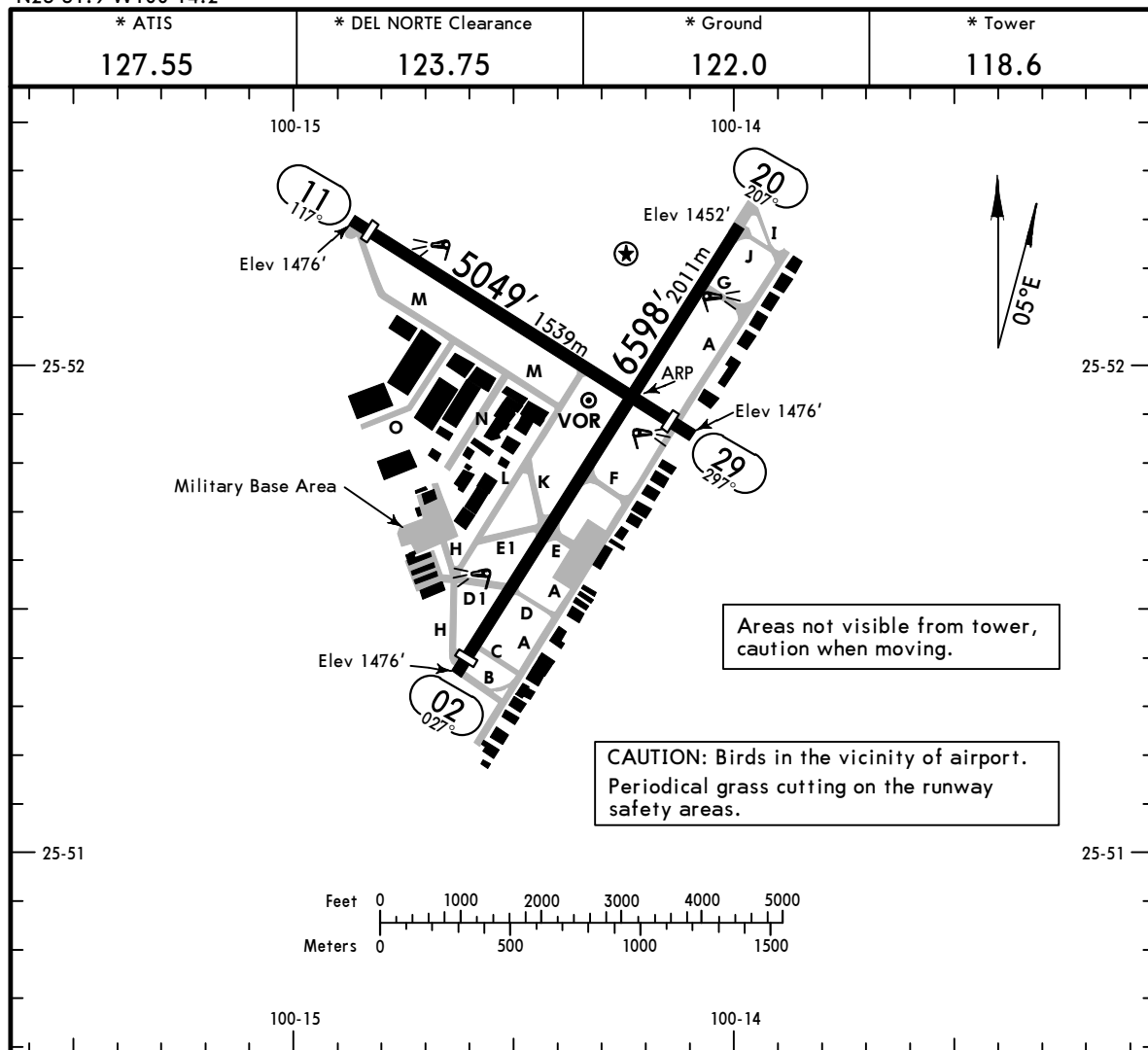
# MMA/NTR

Apt Elev **1476'**  
N25 51.9 W100 14.2

**JEPPESEN**  
22 NOV 24 **(20-9)** Eff 28 Nov

# MONTERREY, MEXICO

DEL NORTE INTL



Areas not visible from tower, caution when moving.

CAUTION: Birds in the vicinity of airport. Periodical grass cutting on the runway safety areas.

### ADDITIONAL RUNWAY INFORMATION

RWY		USABLE LENGTHS			WIDTH
		Threshold	Glide Slope	TAKE-OFF	
02	HIRL PAPI-L (angle 3.0°)	6362' 1939m			148'
20	HIRL PAPI-L (angle 3.2°)		5709' 1740m	6362' 1939m	45m
11	HIRL PAPI-L (angle 3.0°)	4787' 1459m		4715' 1437m	148'
29	HIRL	4715' 1437m		4787' 1459m	45m

### State

### TAKE-OFF

1 HIRL & CL (spacing 15m or less) & relevant RVR	RL & CL & relevant RVR	RL & CL	2 RL & RCLM	2 RL or RCLM	Adequate Vis Ref	
					DAY	NIGHT
TDZ/Mid/Rollout R4 R125m	TDZ/Mid/Rollout R5 R150m	R6 R/V200m	R10 R/V300m	R12 R/V400m	R16 R/V500m	NA

1 TDZ/Mid/Rollout R3 or R75m with approved lateral guidance system.

2 For NIGHT operations, at least RL or CL and RENL are required.

The TDZ RVR/VIS may be assessed by the pilot.

Adequate visual reference means that a pilot is able to continuously indentify the take-off surface and maintain directional control.

Take-off minimums which are relevant to the take-off manoeuvre itself, should not be confused with weather minimums required for flight initiation. Departure weather minimums at an aerodrome should not be less than the applicable minimums for landing at that aerodrome unless a suitable take-off alternate aerodrome is available. The take-off alternate aerodrome should have weather conditions and facilities suitable for landing the aeroplane in normal and non-normal configurations pertinent to the operation.

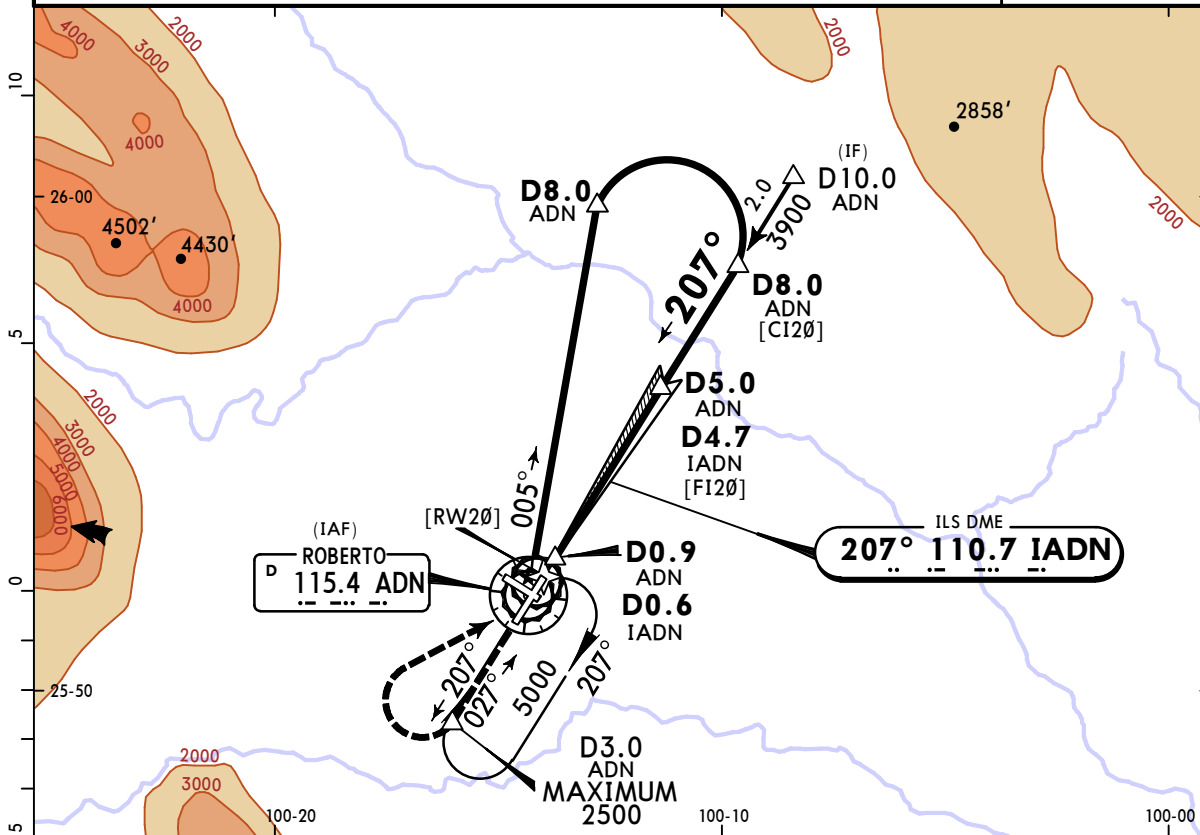


# MMAN/NTR DEL NORTE INTL

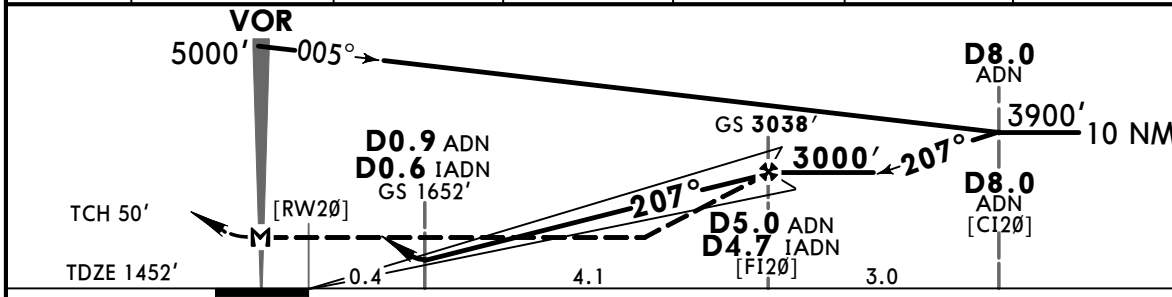
**JEPPESSEN**  
22 NOV 24  
Eff 28 Nov (21-1)

# MONTERREY, MEXICO ILS Z or LOC Z Rwy 20

*ATIS 127.55	MONTERREY Approach (R) 119.75 120.4		*DEL NORTE Tower 118.6	*Ground 122.0
LOC IADN <b>110.7</b>	Final Apch Crs <b>207°</b>	D5.0 ADN D4.7 IADN <b>3038'</b> (1586')	ILS DA(H) <b>1652'</b> (200')	Apt Elev 1476' TDZE 1452'
<b>MISSED APCH:</b> Climb via ADN VOR R-207 cross D3.0 ADN at 2500' MAXIMUM, then turn RIGHT within 5 NM to ADN VOR, continue on ADN VOR R-005 to D8.0 ADN, then turn RIGHT within 10 NM to ADN VOR at the minimum holding altitude.				
Alt Set: MB (IN on req) TDZ Elev: 52 MB Trans level: FL 195 Trans alt: 18500'				
VOR/DME required.				



LOC (GS out)	IADN DME	1.0	2.0	3.0	4.0	4.7
	ALTITUDE	1752'	2092'	2432'	2772'	3000'



Gnd speed-Kts	70	90	100	120	140	160	PAPI-L	↑ via <b>ADN R-207</b>	<b>ADN D3.0</b>	<b>at 2500'</b>
Descent Angle 3.20°	396	510	566	679	793	906				
MAP at VOR or										
FAF to MAP	5.0	4:17	3:20	3:00	2:30	2:09				

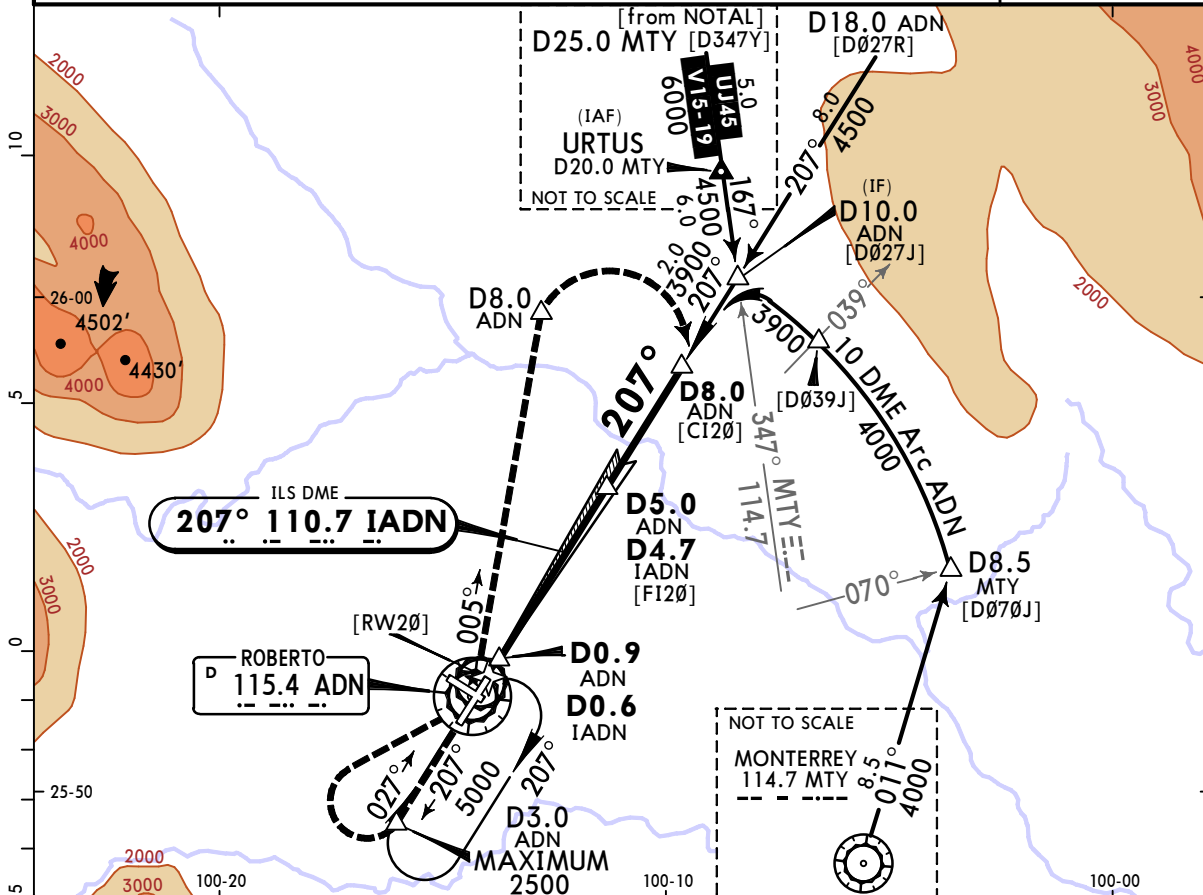
STRAIGHT-IN LANDING RWY20			CIRCLE-TO-LAND		
ILS DA(H) <b>1652'</b> (200')		LOC (GS out) MDA(H) <b>1980'</b> (528')		Max Kts	
A	<b>3/4</b>	1	1 1/2	90	<b>2040'</b> (564') - 1
B				120	<b>2040'</b> (564') - 1 1/2
C				140	<b>2040'</b> (564') - 1 1/2
D				165	<b>2040'</b> (564') - 2

**MMAN/NTR**  
**DEL NORTE INTL**

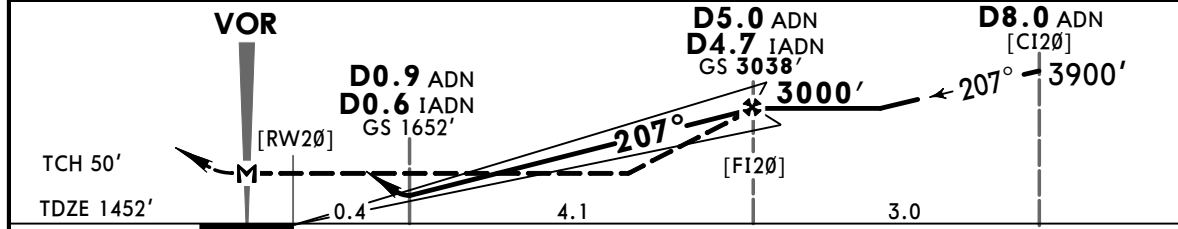
**JEPPESEN**  
22 NOV 24  
Eff 28 Nov (21-2)

**MONTERREY, MEXICO**  
**ILS Y or LOC Y Rwy 20**

*ATIS 127.55		MONTERREY Approach (R) 119.75 120.4		*DEL NORTE Tower 118.6		*Ground 122.0	
LOC IADN <b>110.7</b>	Final Apch Crs <b>207°</b>	<b>D5.0 ADN</b> <b>D4.7 IADN</b> <b>3038' (1586')</b>	ILS DA(H) <b>1652' (200')</b>	Apt Elev 1476' TDZE 1452'			
<b>MISSED APCH:</b> Climb via ADN VOR R-207 cross D3.0 ADN at 2500' MAXIMUM, then turn RIGHT within 5 NM to ADN VOR, continue on ADN VOR R-005 to D8.0 ADN, then turn RIGHT within 10 NM to ADN VOR at the minimum holding altitude.							
Alt Set: MB (IN on req)		TDZ Elev: 52 MB	Trans level: FL 195	Trans alt: 18500'			
VOR/DME required.							



LOC (GS out)	IADN DME	1.0	2.0	3.0	4.0	4.7
	ALTITUDE	1752'	2092'	2432'	2772'	3000'



Gnd speed-Kts	70	90	100	120	140	160	PAPI-L	↑ via <b>115.4 R-207</b> ADN	<b>D3.0</b> ADN	at <b>2500'</b> MAXIMUM
Descent Angle	3.20°	396	510	566	679	793				
MAP at VOR or FAF to MAP	5.0	4:17	3:20	3:00	2:30	2:09	1:53			

STRAIGHT-IN LANDING RWY20			CIRCLE-TO-LAND		
ILS DA(H)	<b>1652' (200')</b>	LOC (GS out) MDA(H)	<b>1980' (504')</b>	Max Kts	MDA(H)
A	<b>3/4</b>	1	1 1/2	90	<b>2040' (564') - 1</b>
B				120	<b>2040' (564') - 1 1/2</b>
C				140	<b>2040' (564') - 1 1/2</b>
D				165	<b>2040' (564') - 2</b>

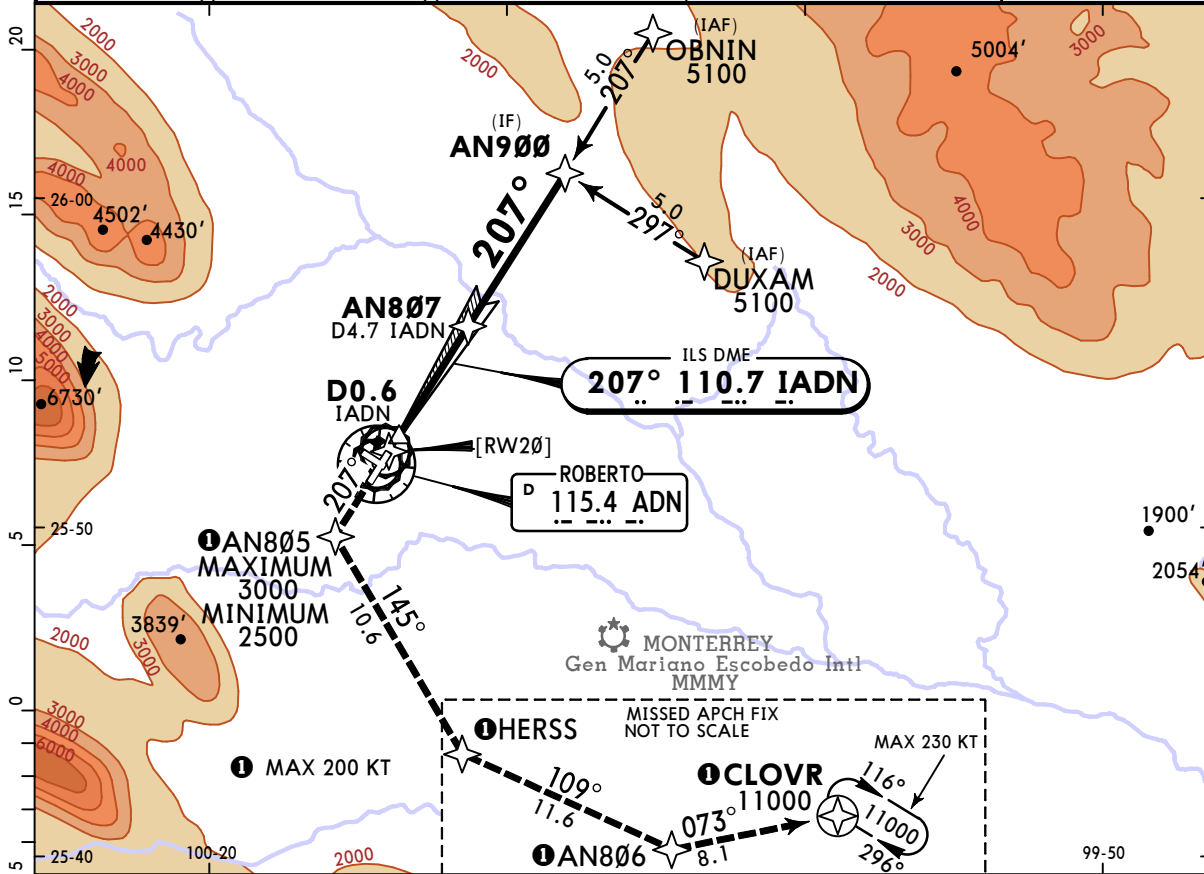
CHANGES: Procedure title, DME note added.

# MMAN/NTR DEL NORTE INTL

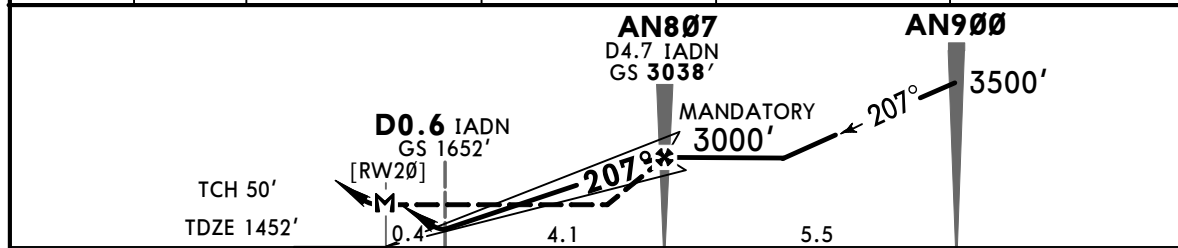
JEPPESSEN  
22 NOV 24  
Eff 28 Nov (21-3)

# MONTERREY, MEXICO ILS X or LOC X Rwy 20

*ATIS 127.55		MONTERREY Approach (R) 119.75 120.4		*DEL NORTE Tower 118.6		*Ground 122.0	
LOC IADN <b>110.7</b>	Final Apch Crs <b>207°</b>	GS <b>AN807</b> 3038' (1586')	ILS DA(H) <b>1652'</b> (200')	Apt Elev 1476' TDZE 1452'			
<b>MISSED APCH:</b> Climb on runway track to AN805, proceed on the missed approach to CLOVR and climb on holding pattern to 11000'.							MSA ADN VOR
Alt Set: MB (IN on req) TDZ Elev: 52 MB Trans level: FL 195 Trans alt: 18500'							
1. GNSS Required and Operative Radar. 2. RNAV 1 required for initial approach, intermediate approach and missed approach. 3. VOR/DME required.							



LOC	IADN DME	1.0	2.0	3.0	4.5
(GS out)	ALTITUDE	1750'	2120'	2950'	3000'



Gnd speed-Kts	70	90	100	120	140	160	PAPI-L	
Descent Angle	3.20°	396	510	566	679	793		
FAF to MAP	4.5	3:51	3:00	2:42	2:15	1:56		

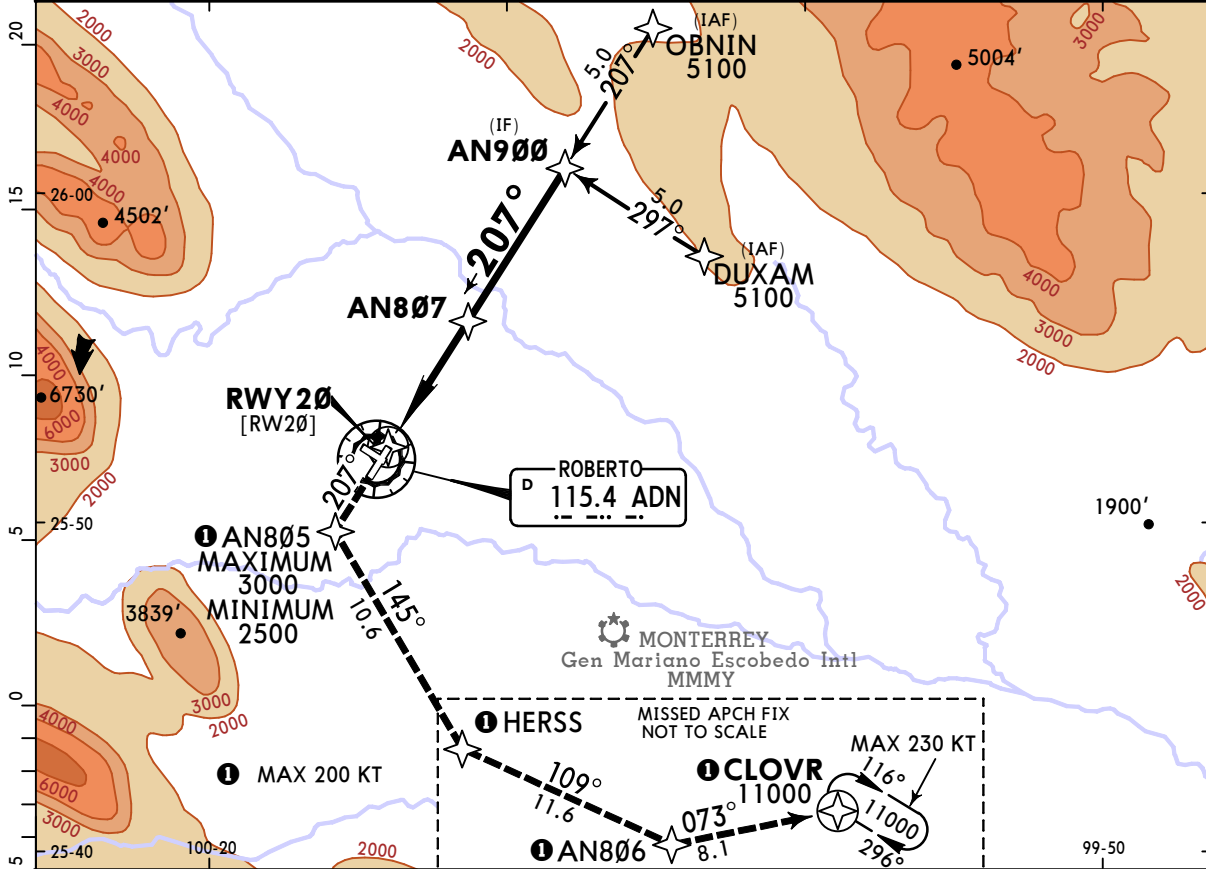
STRAIGHT-IN LANDING RWY20			CIRCLE-TO-LAND		
ILS DA(H) <b>1652'</b> (200')		LOC (GS out) MDA(H) <b>1980'</b> (504')		Max Kts	MDA(H)
A	3/4	1	1 1/2	90	2040'(564') - 1
B				120	2040'(564') - 1 1/2
C				140	2040'(564') - 1 1/2
D				165	2040'(564') - 2

# MMAN/NTR DEL NORTE INTL

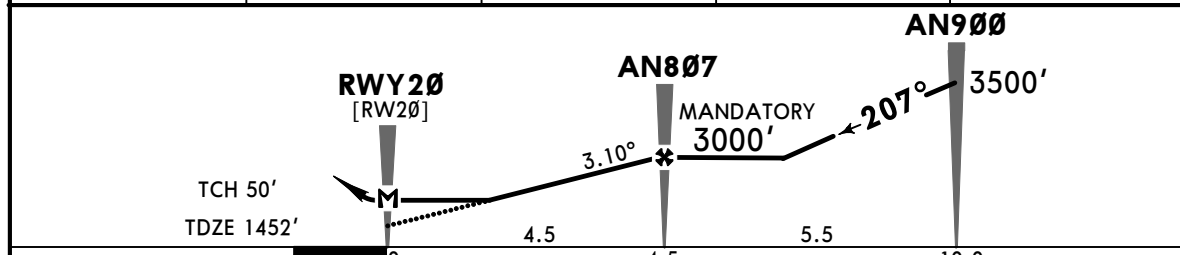
**JEPPESSEN**  
5 AUG 22 **(22-1)** Eff 11 Aug

# MONTERREY, MEXICO RNP Rwy 20

*ATIS <b>127.55</b>	MONTERREY Approach (R) <b>119.75 120.4</b>		*DEL NORTE Tower <b>118.6</b>	*Ground <b>122.0</b>
RNAV	Final Apch Crs <b>207°</b>	<b>AN807</b> MANDATORY <b>3000'</b> (1548')	MDA(H) <b>1980'</b> (528')	Apt Elev 1476' TDZE 1452'
<b>MISSED APCH:</b> Climb on runway track to AN805, proceed on the missed approach to CLOVR and climb in holding pattern to 11000'.				
Alt Set: MB (IN on req) Rwy Elev: 52 MB Trans level: FL 195 Trans alt: 18500'				
RNP Apch				
1. GNSS Required and Operative Radar.				MSA ADN VOR



DIST TO THR	2.0	3.0	4.0	4.5
ALTITUDE	2160'	2490'	2820'	3000'



Gnd speed-Kts	70	90	100	120	140	160	PAPI-L	Rwy track	AN805
Descent Angle	3.10°	384	494	548	658	768			
MAP at RWY20									
AN807 to MAP	4.5	3:51	3:00	2:42	2:15	1:56			

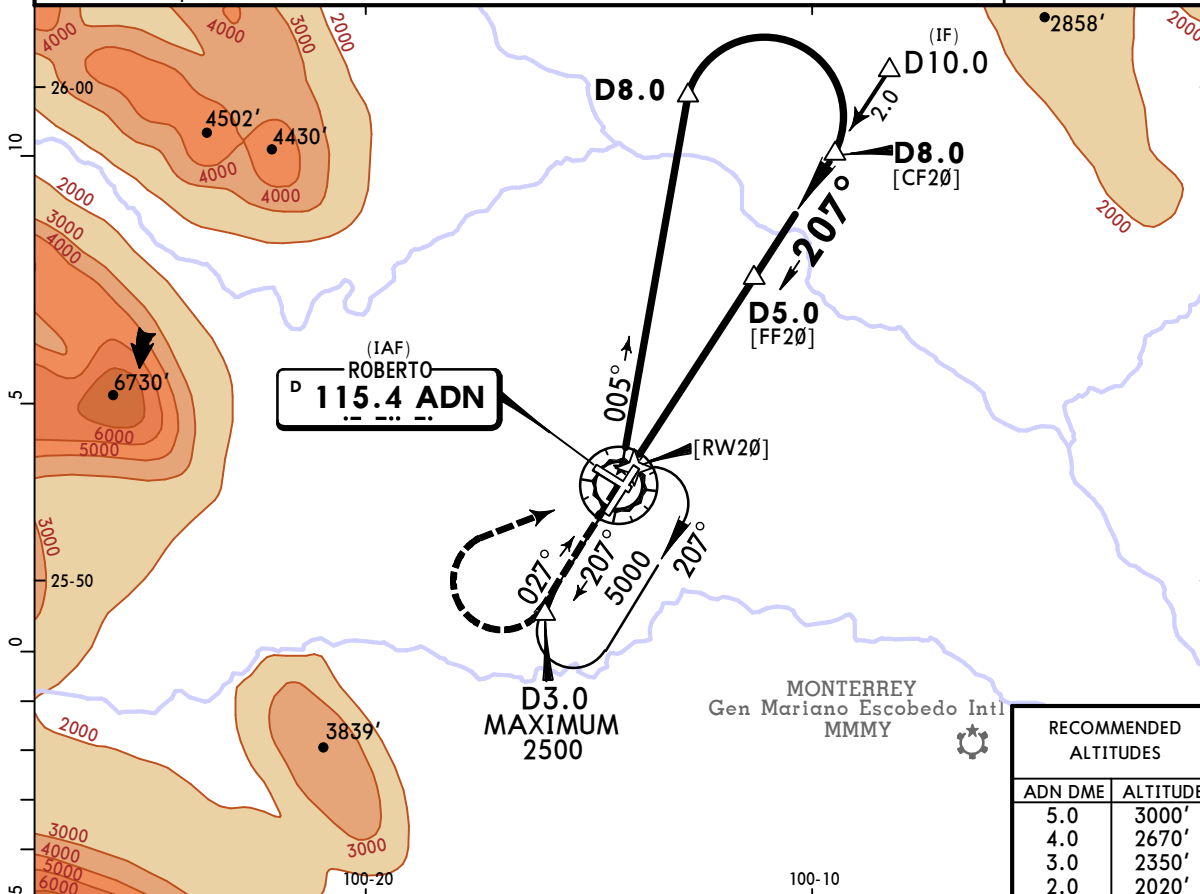
STRAIGHT-IN LANDING RWY 20				CIRCLE-TO-LAND			
LNAV				Max Kts			
MDA(H) <b>1980'</b> (528')				MDA(H)			
A	1			90	2040'(564') - 1		
B	1			120	2040'(564') - 1		
C	1½			140	2040'(564') - 1½		
D	1½			165	2040'(564') - 2		

# MMAN/NTR DEL NORTE INTL

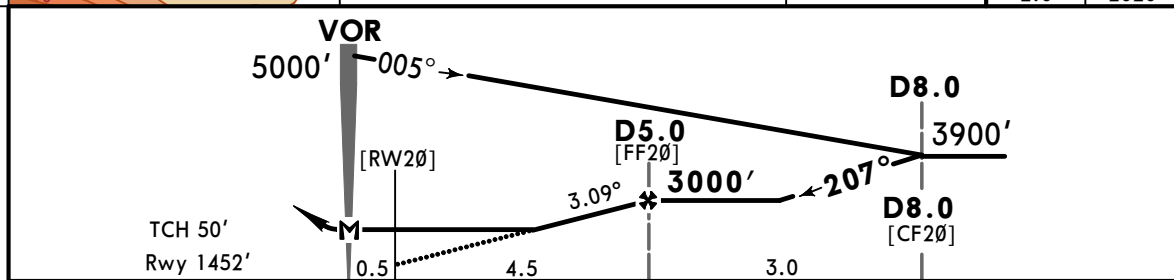
**JEPPESSEN**  
22 NOV 24 **(23-1) Eff 28 Nov**

# MONTERREY, MEXICO VOR Z Rwy 20

*ATIS <b>127.55</b>	MONTERREY Approach (R) <b>119.75 120.4</b>		*DEL NORTE Tower <b>118.6</b>	*Ground <b>122.0</b>
VOR ADN <b>115.4</b>	Final Apch Crs <b>207°</b>	D5.0 <b>3000'</b> (1548')	MDA(H) <b>1980'</b> (528')	Apt Elev 1476' Rwy 1452'
<b>MISSED APCH:</b> Climb via ADN VOR R-207 outbound, cross D3.0 at 2500' MAXIMUM, then turn RIGHT within 5 NM to ADN VOR, continue on ADN VOR R-005 to D8.0, turn RIGHT within 10 NM to ADN VOR to the minimum holding altitude.				
Alt Set: MB (IN on req) Apt Elev: 53 MB Trans level: FL 195 Trans alt: 18500'				MSA ADN VOR
VOR/DME required.				



RECOMMENDED ALTITUDES	
ADN DME	ALTITUDE
5.0	3000'
4.0	2670'
3.0	2350'
2.0	2020'



Gnd speed-Kts	70	90	100	120	140	160	PAPI-L	↑ via <b>115.4 R-207</b>	<b>D3.0</b> at <b>2500'</b> MAXIMUM
Descent Angle 3.09°	383	492	547	656	765	875			
MAP at VOR									
D5.0 to MAP	4.5	3:51	3:00	2:42	2:15	1:56	1:41		

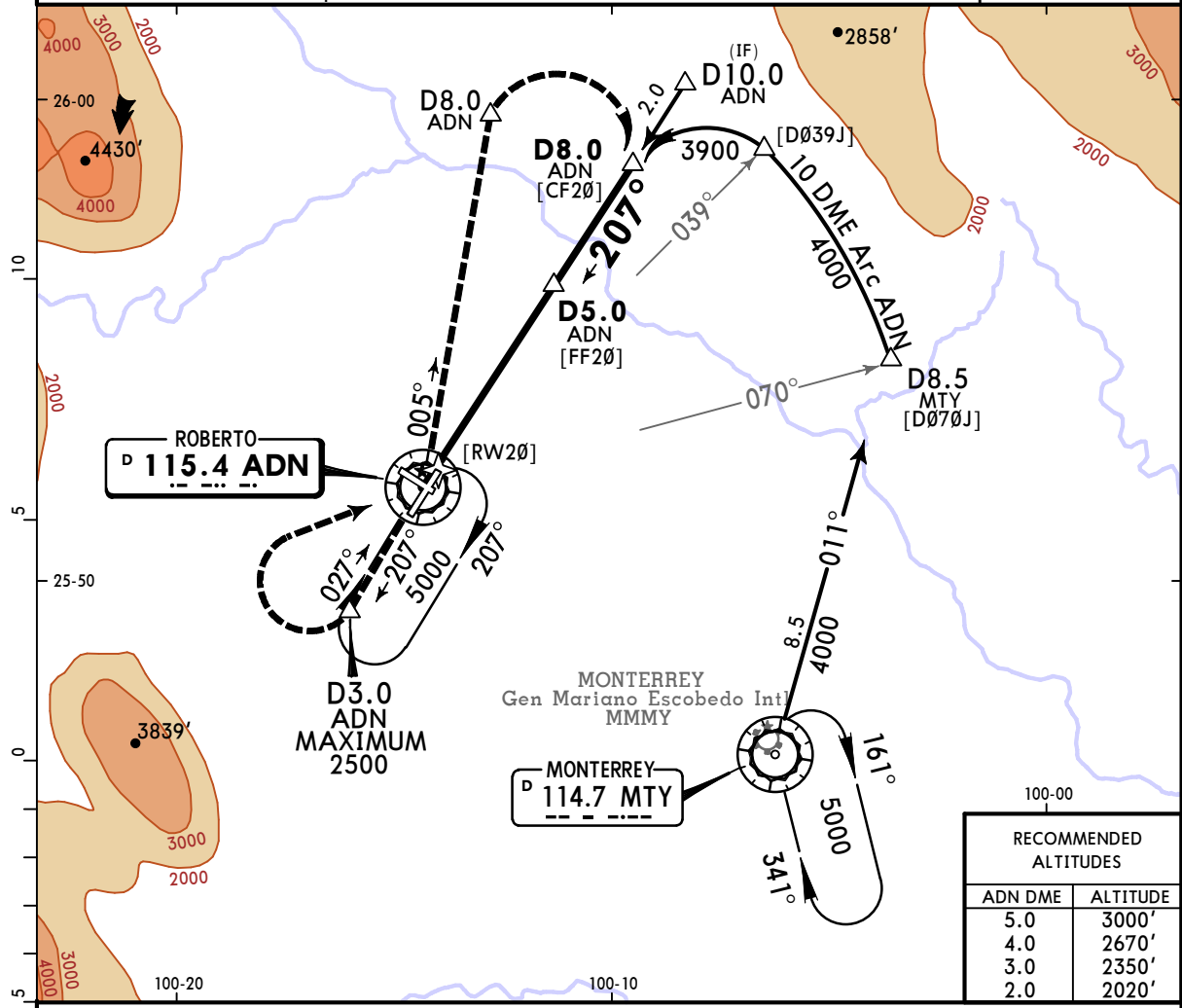
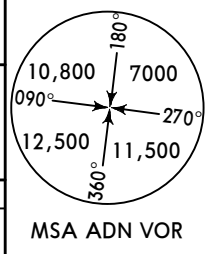
STRAIGHT-IN LANDING RWY 20		CIRCLE-TO-LAND	
MDA(H) <b>1980'</b> (528')		Max Kts	MDA(H)
A	1 1/2	90	<b>2040'</b> (564') - 1
B		120	<b>2040'</b> (564') - 1 1/2
C		140	<b>2040'</b> (564') - 1 1/2
D		165	<b>2040'</b> (564') - 2

# MMAN/NTR DEL NORTE INTL

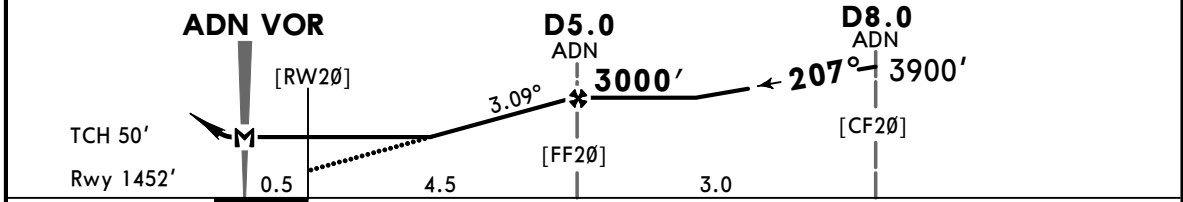
22 NOV 24 **23-2** Eff 28 Nov

# MONTERREY, MEXICO VOR Y Rwy 20

*ATIS <b>127.55</b>	MONTERREY Approach (R) <b>119.75 120.4</b>		*DEL NORTE Tower <b>118.6</b>	*Ground <b>122.0</b>
VOR ADN <b>115.4</b>	Final Apch Crs <b>207°</b>	D5.0 ADN <b>3000'</b> (1548')	MDA(H) <b>1980'</b> (528')	Apt Elev 1476' Rwy 1452'
<b>MISSED APCH:</b> Climb via ADN VOR R-207 outbound, cross D3.0 at 2500' MAXIMUM, then turn RIGHT within 5 NM to ADN VOR, continue on ADN VOR R-005 to D8.0 turn RIGHT within 10NM to ADN VOR at the minimum holding altitude.				
Alt Set: MB (IN on req) Apt Elev: 53 MB Trans level: FL 195 Trans alt: 18500'				
1. VOR/DME required. 2. In case of DME failure at any point during the procedure, maintain last altitude and proceed to the station in accordance with ATC instructions.				



RECOMMENDED ALTITUDES	
ADN DME	ALTITUDE
5.0	3000'
4.0	2670'
3.0	2350'
2.0	2020'



Gnd speed-Kts	70	90	100	120	140	160
Descent Angle 3.09°	383	492	547	656	765	875
MAP at VOR						
D5.0 to MAP	4.5	3:51	3:00	2:42	2:15	1:56
					1:41	

PAPI-L	↑	ADN via <b>115.4 R-207</b>	D3.0 ADN at <b>2500'</b> MAXIMUM
--------	---	----------------------------	----------------------------------

STRAIGHT-IN LANDING RWY 20		CIRCLE-TO-LAND	
MDA(H) <b>1980'</b> (528')		MDA(H)	
A		Max Kts 90	<b>2040'</b> (564') - 1
B	1	120	<b>2040'</b> (564') - 1
C	1½	140	<b>2040'</b> (564') - 1½
D		165	<b>2040'</b> (564') - 2

CHANGES: Procedure title, DME note added.

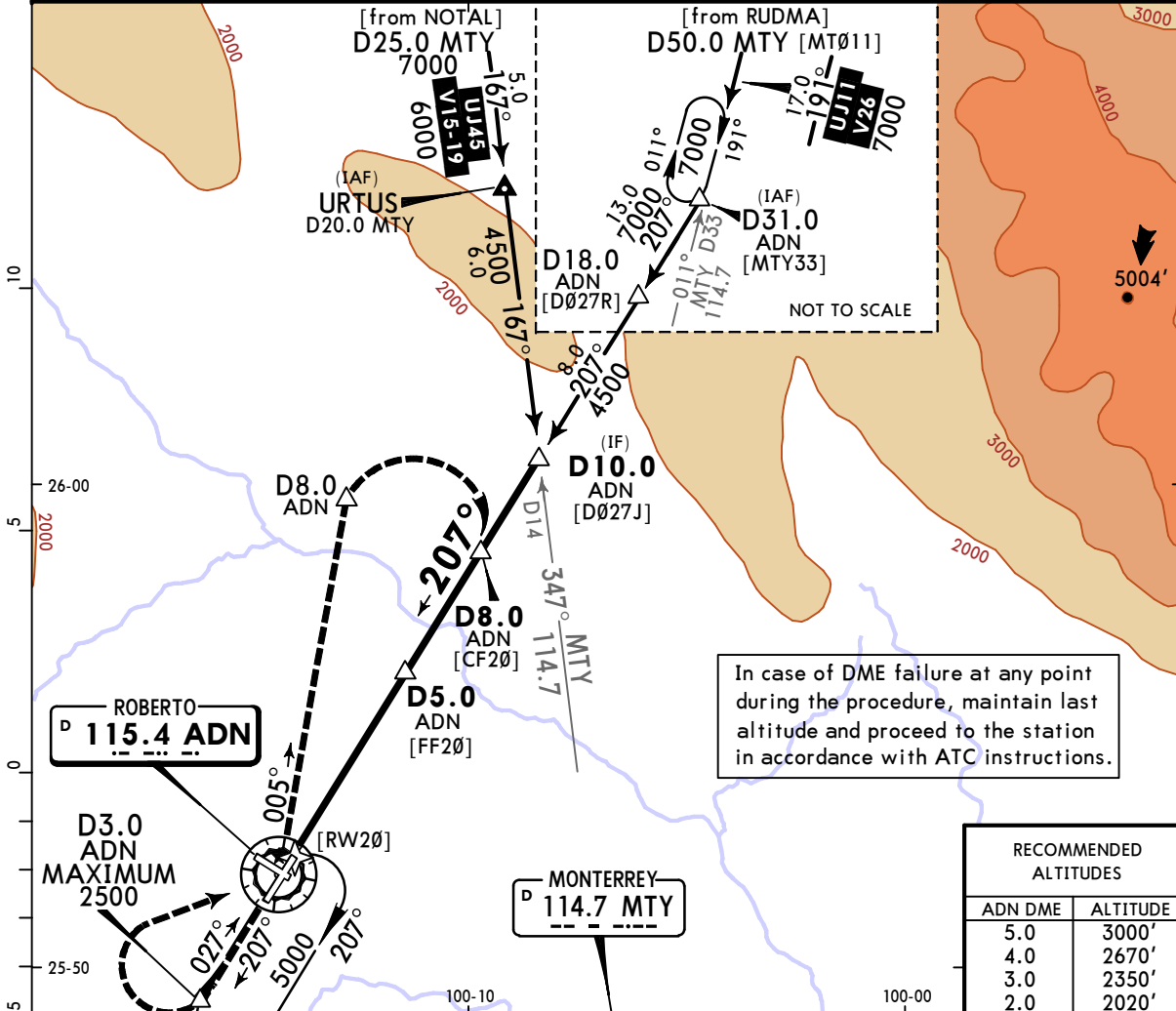


# MMAN/NTR DEL NORTE INTL

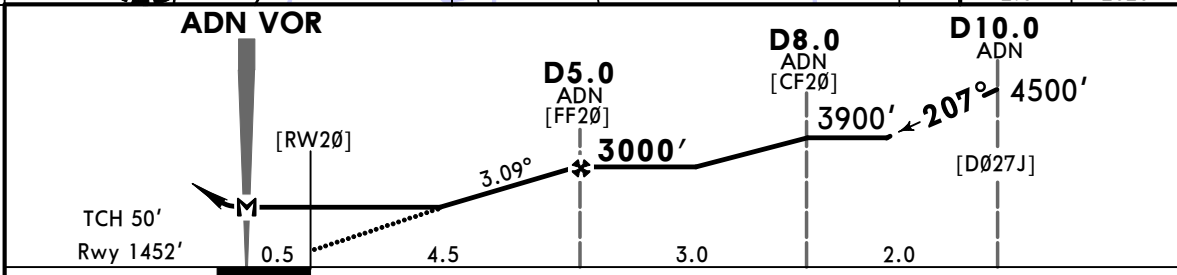
**JEPPESSEN**  
22 NOV 24 **(23-3)** Eff 28 Nov

# MONTERREY, MEXICO VOR X Rwy 20

*ATIS <b>127.55</b>	MONTERREY Approach (R) <b>119.75 120.4</b>		*DEL NORTE Tower <b>118.6</b>	*Ground <b>122.0</b>
VOR ADN <b>115.4</b>	Final Apch Crs <b>207°</b>	D5.0 ADN <b>3000'</b> (1548')	MDA(H) <b>1980'</b> (528')	Apt Elev 1476' Rwy 1452'
<b>MISSED APCH:</b> Climb via ADN VOR R-207 outbound cross D3.0 at 2500' MAXIMUM, then turn RIGHT within 5 NM to ADN VOR, continue on ADN VOR R-005 to D8.0, turn RIGHT within 10 NM to ADN VOR to the minimum holding altitude.				
Alt Set: MB (IN on req) Apt Elev: 53 MB Trans level: FL 195 Trans alt: 18500' 1. DME required. 2. Do not use holding patterns at the same altitude.				



RECOMMENDED ALTITUDES	
ADN DME	ALTITUDE
5.0	3000'
4.0	2670'
3.0	2350'
2.0	2020'



Gnd speed-Kts	70	90	100	120	140	160	PAPI-L	↑ via <b>115.4 R-207</b> ADN D3.0 at <b>2500'</b> MAXIMUM	
Descent Angle	3.09°	383	492	547	656	765			875
MAP at VOR									
D5.0 ADN to MAP	4.5	3:51	3:00	2:42	2:15	1:56			1:41

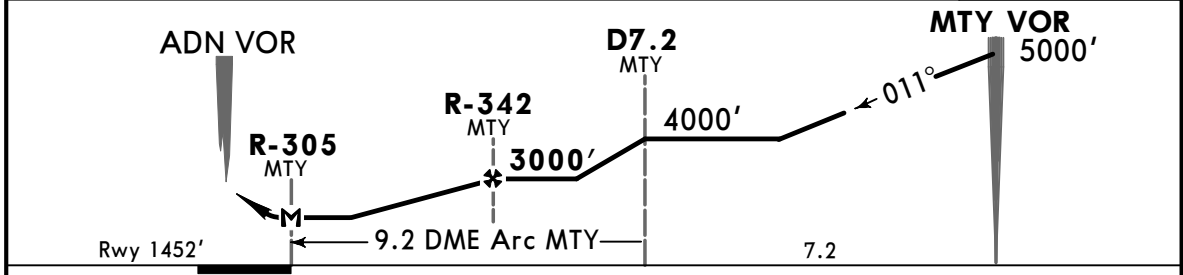
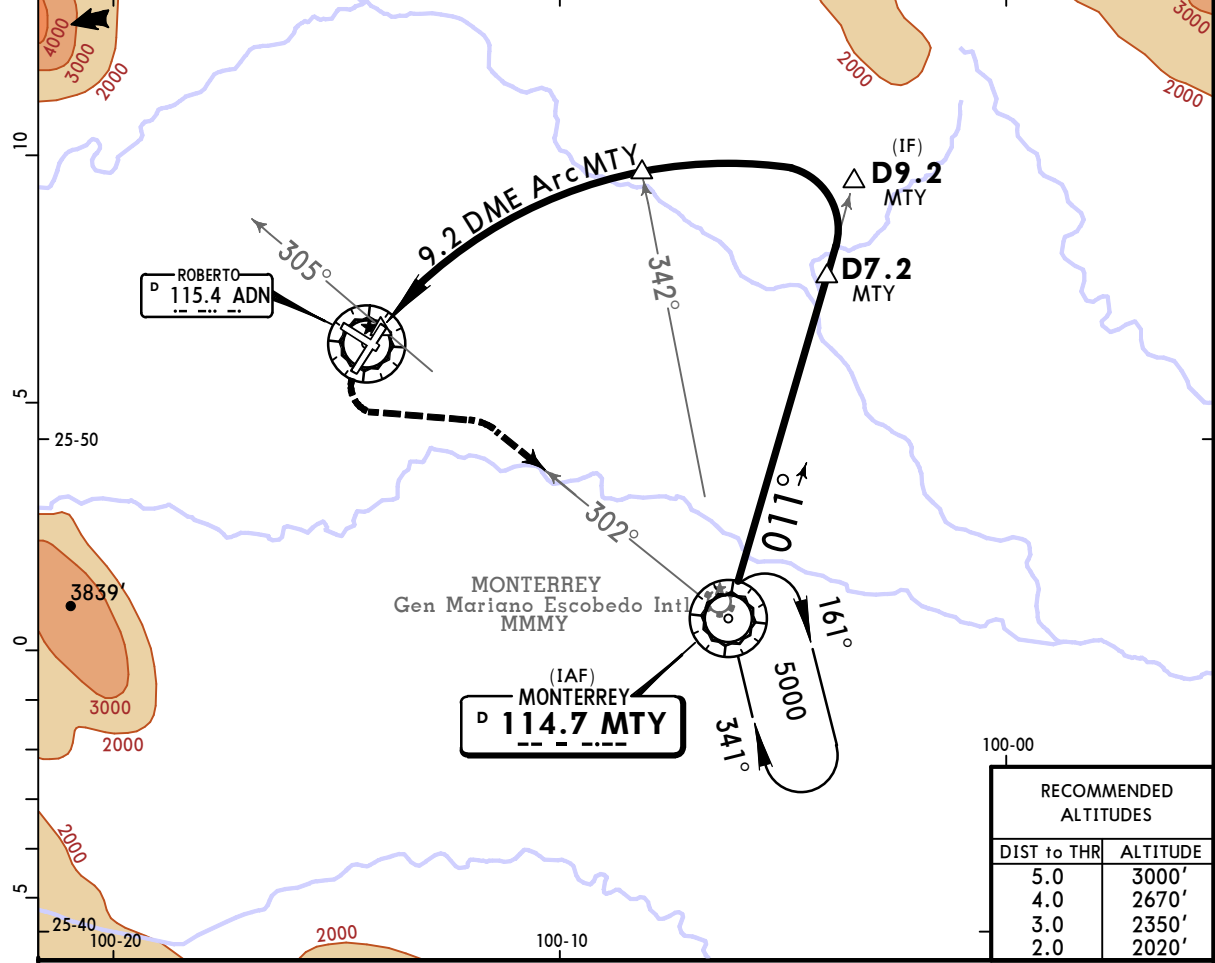
STRAIGHT-IN LANDING RWY 20		CIRCLE-TO-LAND	
MDA(H) <b>1980'</b> (528')		MDA(H)	
A	1	90	<b>2040'</b> (564') - 1
B		120	
C	1½	140	<b>2040'</b> (564') - 1½
D		165	<b>2040'</b> (564') - 2

**MMAN/NTR**  
**DEL NORTE INTL**

**JEPPESSEN**  
22 NOV 24 **23-4** Eff 28 Nov

**MONTERREY, MEXICO**  
**VOR W Rwy 20**

*ATIS <b>127.55</b>		MONTERREY Approach (R) <b>119.75 120.4</b>		*DEL NORTE Tower <b>118.6</b>	*Ground <b>122.0</b>
VOR MTY <b>114.7</b>	Final Apch Crs Refer to Planview	R-342 MTY <b>3000'</b> (1548')	MDA(H) <b>2040'</b> (588')	Apt Elev 1476' Rwy 1452'	<p>MSA MTY VOR</p>
<b>MISSED APCH:</b> Climbing LEFT turn to intercept MTY VOR R-302 inbound and return to MTY VOR to the minimum holding altitude.					
Alt Set: MB (IN on req)    Apt Elev: 53 MB    Trans level: FL 195    Trans alt: 18500' DME required.					



Gnd speed-Kts	70	90	100	120	140	160	PAPI-L		MTY <b>114.7</b> <b>R-302</b>
MAP at R-305 MTY									
R-342 MTY to MAP	4.5	3:51	3:00	2:42	2:15	1:56			

STRAIGHT-IN LANDING RWY 20			CIRCLE-TO-LAND		
MDA(H) <b>2040'</b> (588')			MDA(H)		
A		90	2100'(624') -1		
B	1	120	2100'(624') -1		
C	1½	140	2100'(624') -1¾		
D	1¾	165	2100'(624') -2		

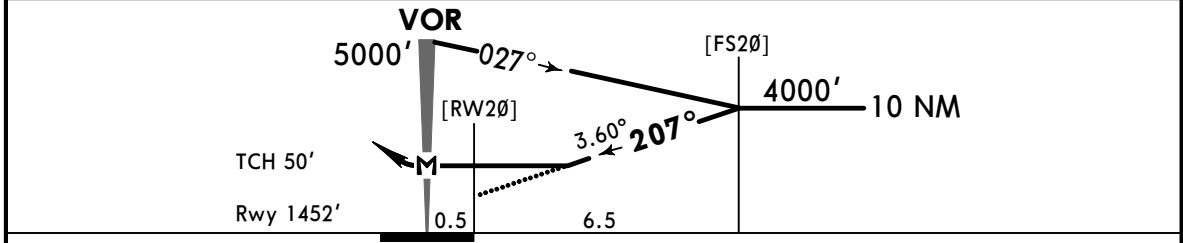
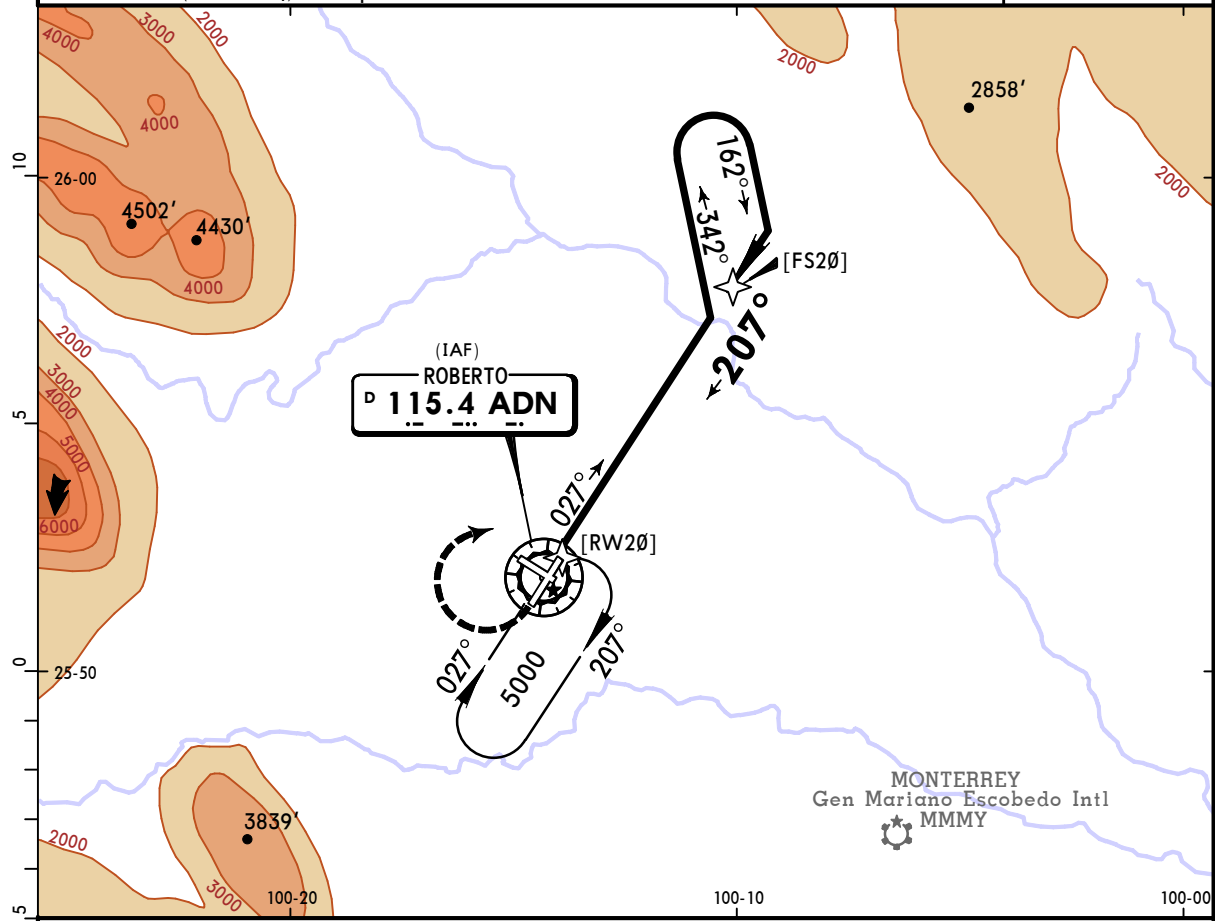


**MMAN/NTR**  
DEL NORTE INTL

**JEPPESEN**  
22 NOV 24 **(23-5)** Eff 28 Nov

**MONTERREY, MEXICO**  
VOR V Rwy 20

*ATIS <b>127.55</b>		MONTERREY Approach (R) <b>119.75 120.4</b>		*DEL NORTE Tower <b>118.6</b>		*Ground <b>122.0</b>																									
VOR ADN <b>115.4</b>	Final Apch Crs <b>207°</b>	No FAF	MDA(H) <b>2040' (588')</b>		Apt Elev 1476' Rwy 1452'																										
<b>MISSED APCH: Turn RIGHT to intercept ADN VOR R-027 outbound and proceed on the approach track to the minimum holding altitude.</b>																															
<table border="1"> <thead> <tr> <th colspan="8">MAX TIME TO TURN</th> </tr> <tr> <th>Gnd speed-Kts</th> <th>80</th> <th>100</th> <th>120</th> <th>140</th> <th>160</th> <th>180</th> <th>200</th> </tr> </thead> <tbody> <tr> <td>7 NM to turn</td> <td>5:15</td> <td>4:12</td> <td>3:30</td> <td>3:00</td> <td>2:38</td> <td>2:20</td> <td>2:06</td> </tr> </tbody> </table>								MAX TIME TO TURN								Gnd speed-Kts	80	100	120	140	160	180	200	7 NM to turn	5:15	4:12	3:30	3:00	2:38	2:20	2:06
MAX TIME TO TURN																															
Gnd speed-Kts	80	100	120	140	160	180	200																								
7 NM to turn	5:15	4:12	3:30	3:00	2:38	2:20	2:06																								
Alt Set: MB (IN on req)		Apt Elev: 53 MB		Trans level: FL 195		Trans alt: 18500'																									



Gnd speed-Kts	70	90	100	120	140	160	PAPI-L	RT	ADN <b>115.4</b> <b>R-027</b>
Descent Angle 3.60°	446	573	637	765	892	1019			

STRAIGHT-IN LANDING RWY 20				CIRCLE-TO-LAND			
MDA(H) <b>2040' (588')</b>				MDA(H)			
A	1			Max Kts	90		
B	1			120	2040' (564') - 1		
C	1½			140	2040' (564') - 1½		
D	1¾			165	2040' (564') - 2		

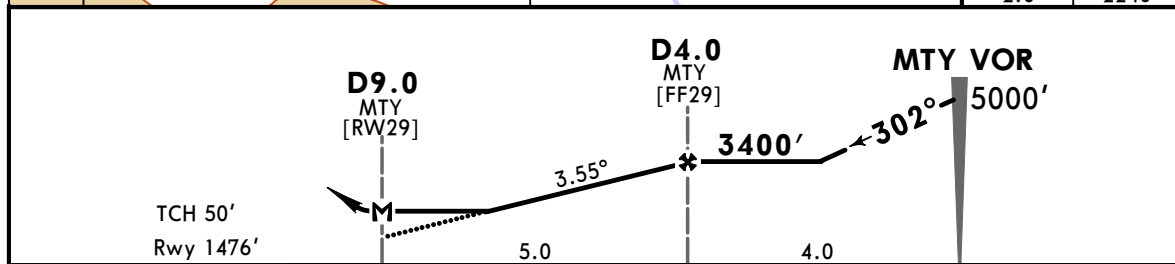
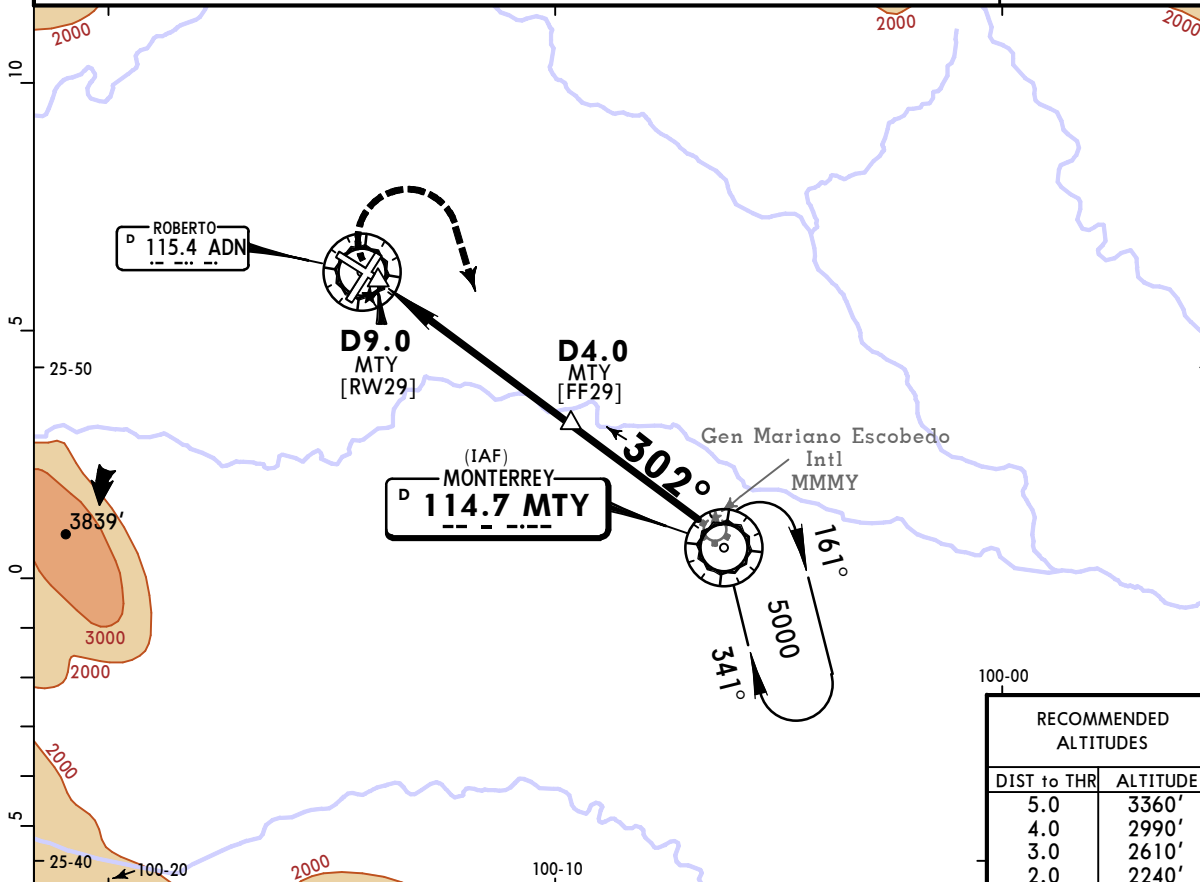
CHANGES: Procedure title, VNAV angle.

**MMAN/NTR**  
**DEL NORTE INTL**

**JEPPESEN**  
22 NOV 24  
Eff 28 Nov **(23-6)** CAT A, B & C

**MONTERREY, MEXICO**  
**VOR Rwy 29**

*ATIS <b>127.55</b>		MONTERREY Approach (R) <b>119.75 120.4</b>		*DEL NORTE Tower <b>118.6</b>	*Ground <b>122.0</b>
VOR MTY <b>114.7</b>	Final Apch Crs <b>302°</b>	D4.0 MTY <b>3400'</b> (1924')	MDA(H) <b>1980'</b> (504')	Apt Elev 1476' Rwy 1476'	<p>MSA MTY VOR</p>
<b>MISSED APCH: Climbing RIGHT turn to intercept MTY VOR R-302 inbound and return to MTY VOR to the minimum holding altitude.</b>					
Alt Set: MB (IN on req)    Apt Elev: 53 MB    Trans level: FL 195    Trans alt: 18500'					
DME required.					



Gnd speed-Kts	70	90	100	120	140	160	 RT <b>MTY 114.7 R-302</b>
Descent Angle 3.55°	440	565	628	754	880	1005	
MAP at D9.0 MTY							
D4.0 MTY to MAP	5.0	4:17	3:20	3:00	2:30	2:09	

STRAIGHT-IN LANDING RWY 29			CIRCLE-TO-LAND		
MDA(H) <b>1980'</b> (504')			MDA(H)		
A	1		Max Kts	90	
B	1		2040' (564') - 1		
C	1½		120	2040' (564') - 1½	
D	NOT APPLICABLE		140	2040' (564') - 1½	
			D	NOT APPLICABLE	