

## General Information

Location: ACAPULCO MEX  
ICAO/IATA: MMAA / ACA  
Lat/Long: N16° 45.4', W099° 45.2'  
Elevation: 15 ft

Airport Use: Public  
Daylight Savings: Not Observed  
UTC Conversion: +6:00 = UTC  
Magnetic Variation: 5.0° E

Fuel Types: 100 Octane (LL), Jet A  
Customs: Yes  
Airport Type: IFR  
Landing Fee: No  
Control Tower: Yes  
Jet Start Unit: No  
LLWS Alert: No  
Beacon: Yes

Sunrise: 1210 Z  
Sunset: 0101 Z

## Runway Information

Runway: 06  
Length x Width: 5577 ft x 115 ft  
Surface Type: concrete  
TDZ-Elev: 11 ft  
Lighting: Edge

Runway: 10  
Length x Width: 10827 ft x 148 ft  
Surface Type: concrete  
TDZ-Elev: 12 ft  
Lighting: Edge, ALS

Runway: 24  
Length x Width: 5577 ft x 115 ft  
Surface Type: concrete  
TDZ-Elev: 11 ft  
Lighting: Edge

Runway: 28  
Length x Width: 10827 ft x 148 ft

Surface Type: concrete

TDZ-Elev: 15 ft

Lighting: Edge, ALS

## Communication Information

ATIS: 115.900

Acapulco Tower: 119.900

Acapulco Tower: 118.500

Acapulco Approach: 119.900

Acapulco Information: 122.300

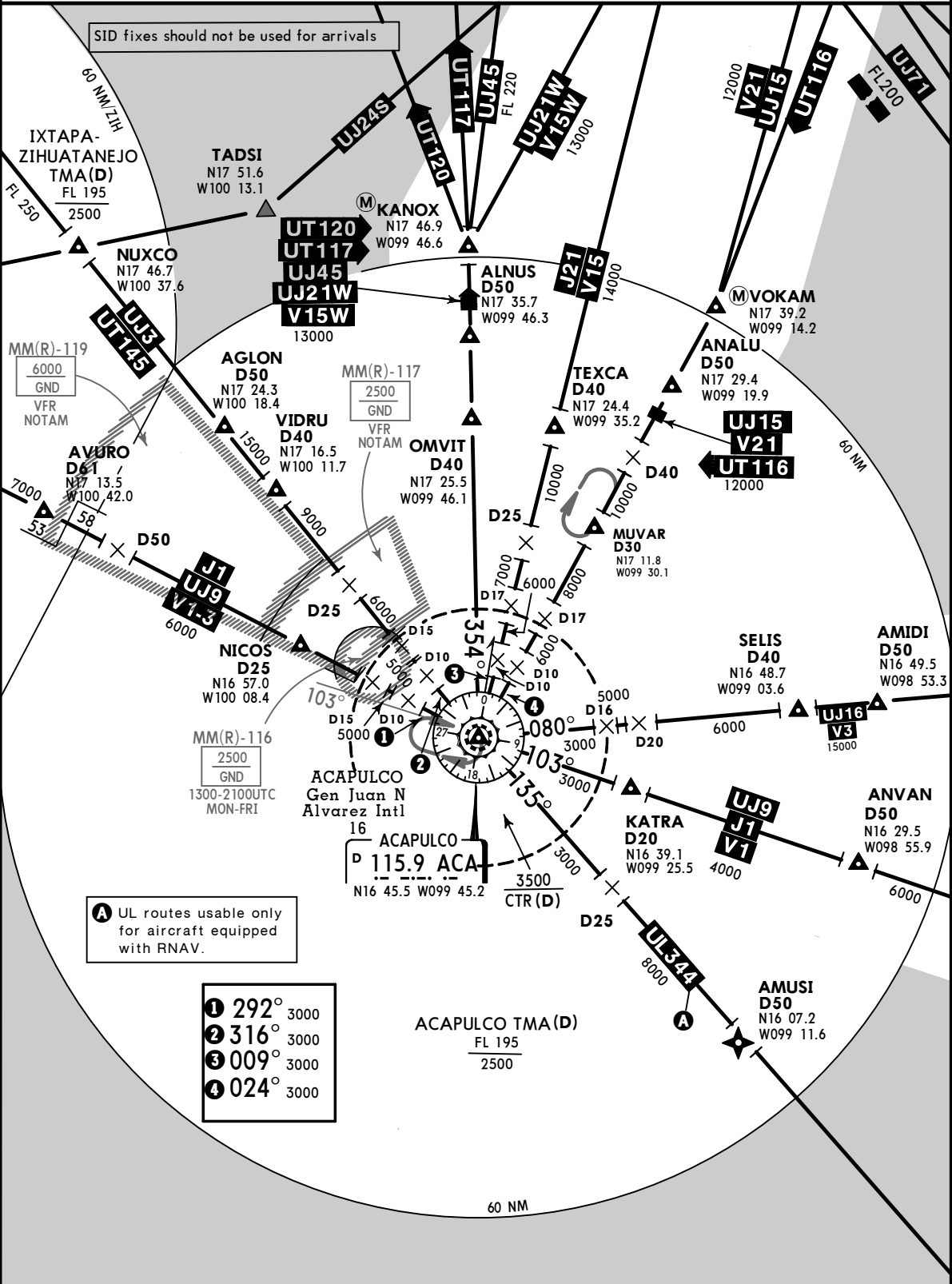
\*ATIS **115.9** ACAPULCO Approach (\*R) **119.9**

**SPEED RESTRICTIONS WITHIN MEXICO AIRSPACE**  
**MAXIMUM IAS UNLESS OTHERWISE DEPICTED OR AUTHORIZED BY ATC**

Below 3000' AGL within 10 NM of any airport.....200 KTS  
 Below 10000' MSL within Mexico Airspace.....250 KTS  
 Below 10000' AGL within 30 NM of any airport.....250 KTS

**WITHIN ACAPULCO TMA**

At or below 3000' MSL within 10 NM of ACA VORDME.....200 KTS  
 At or below 10000' MSL within 30 NM of ACA VORDME.....250 KTS



**A** UL routes usable only for aircraft equipped with RNAV.

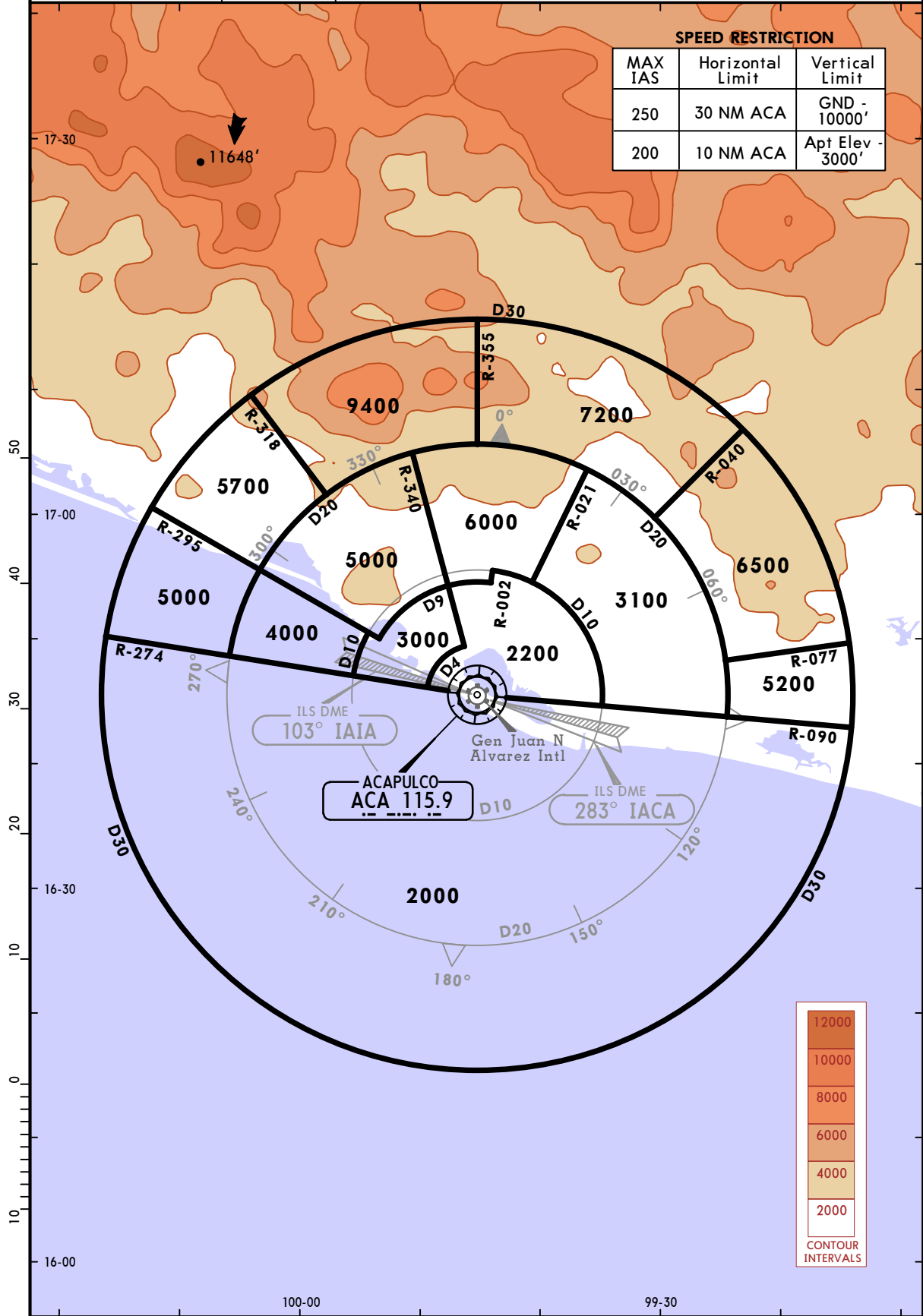
- 1** 292° 3000
- 2** 316° 3000
- 3** 009° 3000
- 4** 024° 3000

**MMAA/ACA**  
**GEN JUAN N ALVAREZ INTL**

14 JUL 17  
**Eff 20 Jul** (10-1R)

**JEPPESEN ACAPULCO, MEXICO**  
**RADAR MINIMUM ALTITUDES**

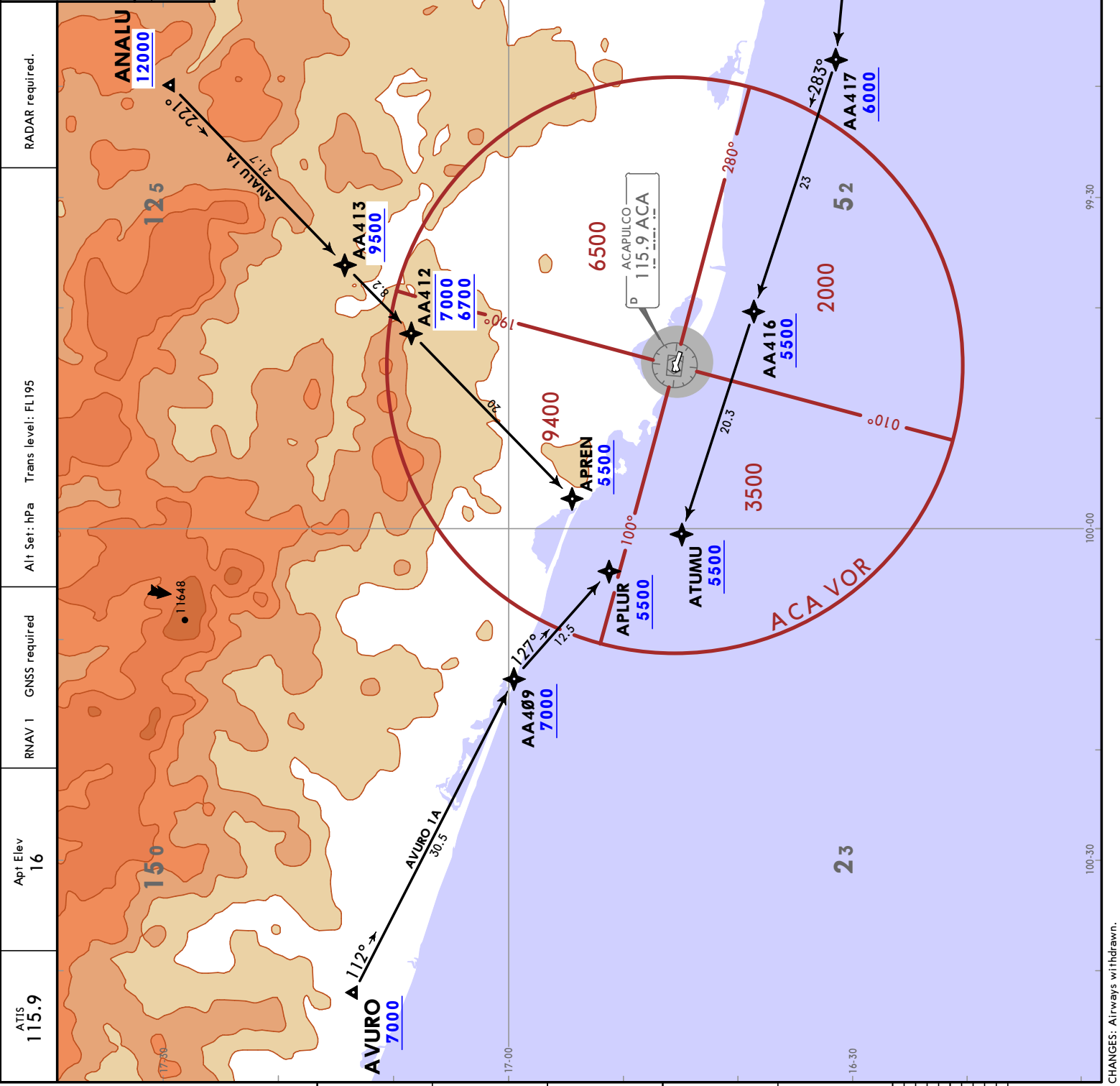
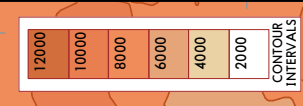
ACAPULCO APPROACH (R) <b>119.9</b>	Apt Elev <b>16'</b>	Alt Set: MB (IN on req) Trans level: FL195 Trans alt: 18500' 1. These are the lowest MVA that can be assigned by the controller in a section when RADAR control procedures (vectors) are applied, without affecting routes and procedures with lower minimums. 2. All aircraft operating under VFR within this TMA should have transponder mode 3 A/C with 4096 code capabilities. 3. Exclusive use chart to verify assigned altitudes to identified aircraft.
--	------------------------	---



CHANGES: Revised, new format.

**ANALU 1A (ANALUTA) [ANAL1A]**  
**ANVAN 1A (ANVAN1A) [ANVA1A]**  
**AVURO 1A (AVURO1A) [AVUR1A]**  
**RNAV ARRIVALS**  
**(RWY 10)**

**ROUTING**  
 From ANALU, ANVAN, or AVURO continue to the waypoints, altitudes and tracks shown, to the corresponding IAF and continue on approach procedure or according to ATC instructions.



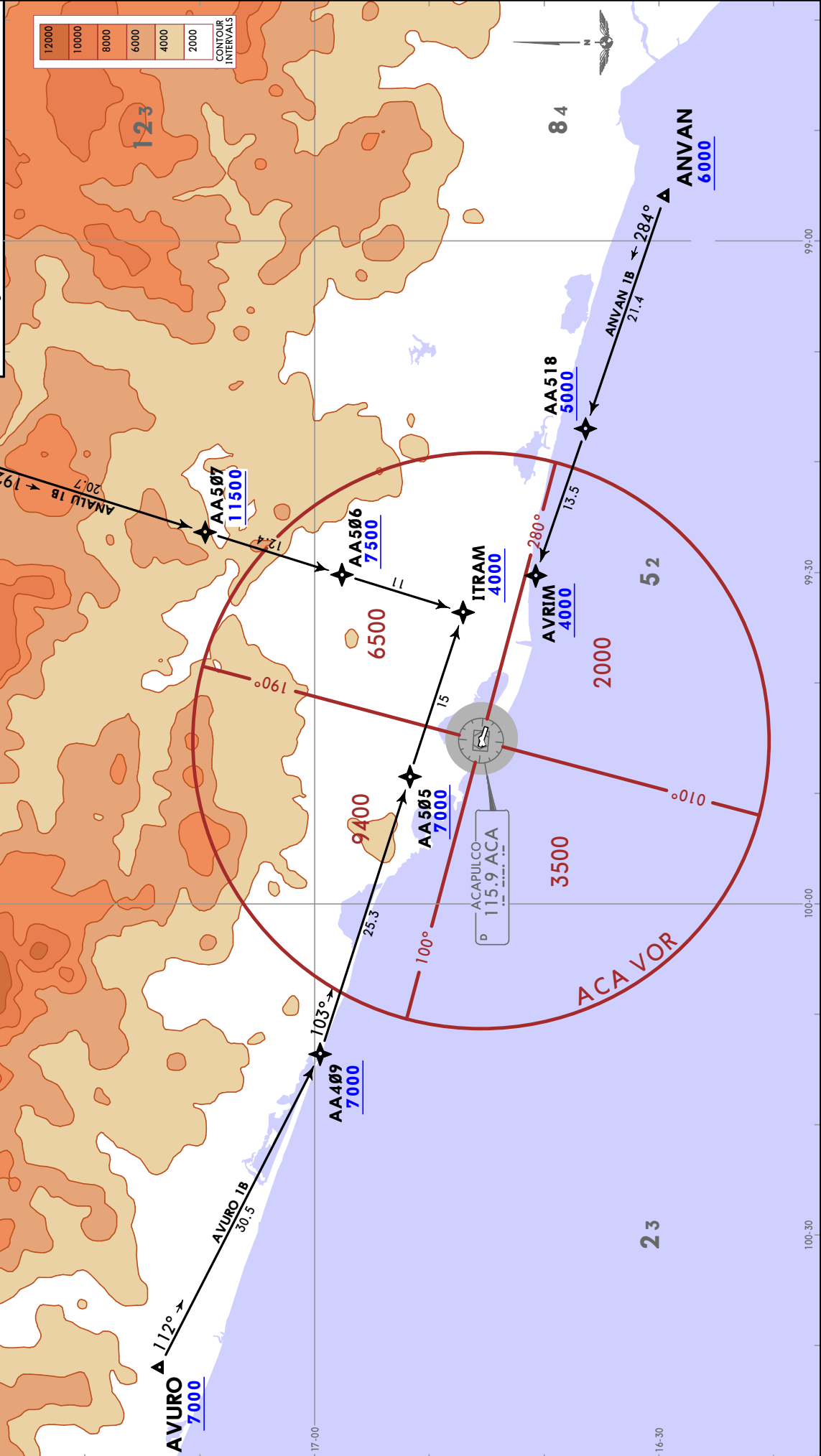
**JEPPESEN ACAPULCO, MEXICO**  
 2 SEP 22 (10-2A) Eff 8 Sep  
**RNAV STAR**

**MMAA/ACA**  
 GEN JUAN N ALVAREZ INTL

ATIS 115.9	Apt Elev 16	RNAV 1 GNSS required	Alt Set: hPa Trans level: FL195	RADAR required.
---------------	----------------	-------------------------	------------------------------------	-----------------

**ANALU 1B (ANALU1B) [ANAL1B]**  
**ANVAN 1B (ANVAN1B) [ANVA1B]**  
**AVURO 1B (AVURO1B) [AVUR1B]**  
**RNAV ARRIVALS**  
**(RWY 28)**

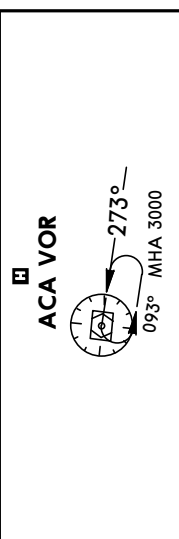
**ROUTING**  
 From ANALU, ANVAN, or AVURO continue to the waypoints, altitudes and tracks shown to the corresponding IAF and continue on approach procedure or according to ATC instructions.



Apt Elev 15  
 Trans alt: 18500

**ACAPULCO 3A (ACA3A) [ACA3A]  
 KATRA 3 (KATRA3) [KATRA3]  
 OMVIT 1A (OMVIT1A) [OMVIT1A]  
 SELIS 3 (SELIS3) [SELIS3]  
 TEXCA 3A (TEXCA3A) [TEXCA3A]**

**DEPARTURES  
 (RWY 10)**

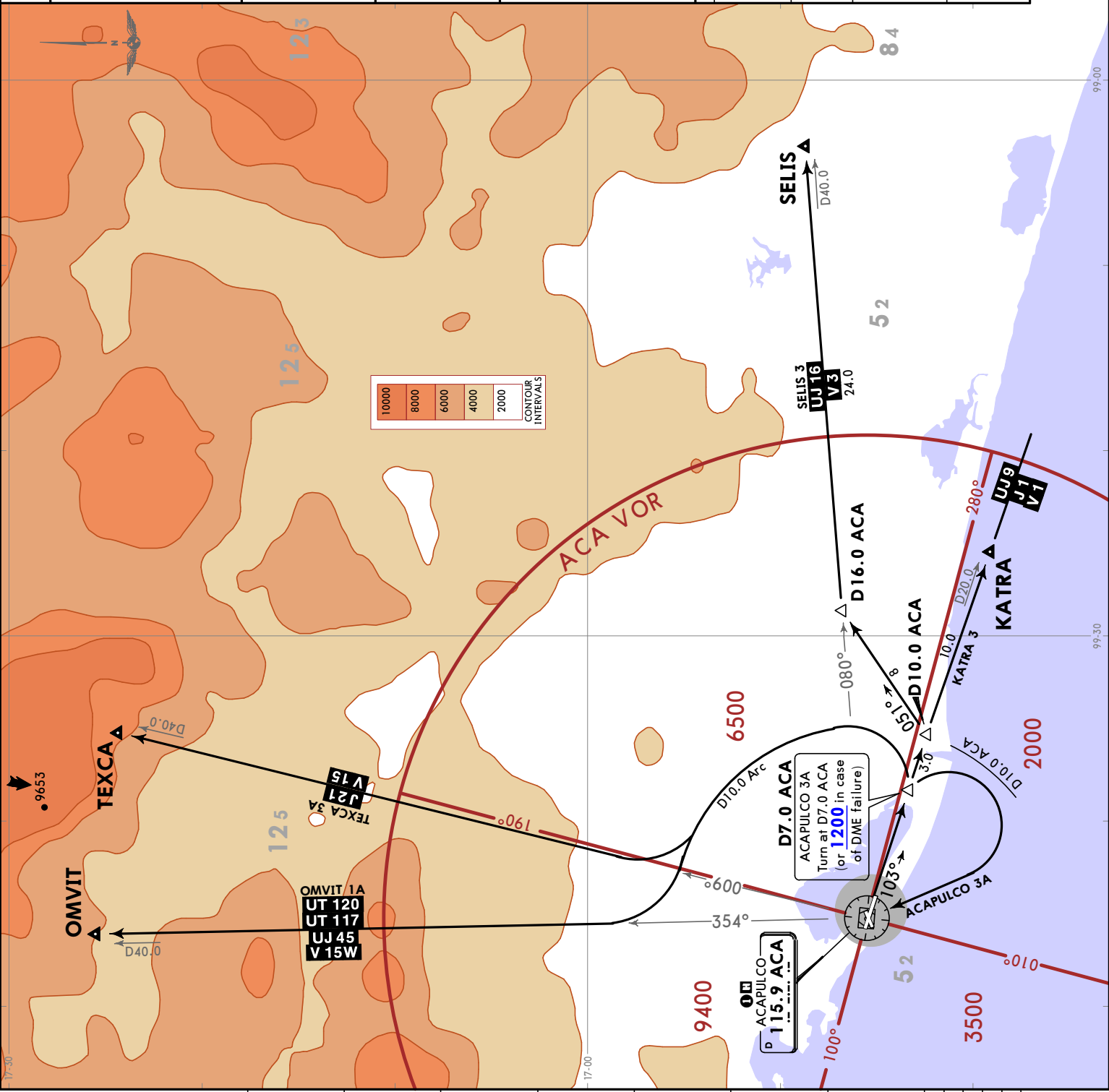


These SIDs require minimum climb gradients:  
 OMVIT 1A, TEXCA 3A: 230 FT/NM (3.78%) to 9000.  
 SELIS 3: 220 FT/NM (3.62%) to 6000.

Grnd speed-KT	75	100	150	200	250	300
220 FT/NM	275	367	550	733	917	1100
230 FT/NM	288	383	575	767	958	1150

MINIMUM CROSSING ALTITUDE	
TEQ	5300
V-15	J-21
VOKAM	UJ-15
V-21	UJ-16
OAX	V-3
V-3	J-1, UJ-9
PXM	UL-344
V-1	UL-344
YEDRA	2000
ZIH	2000
V-1-3	J-1, UJ-9
UPN	UJ-3, UT-145
ELILA	UT-120
ESPOS	UT-117
TLC	6600
TEQ	6600
V-15W	5100

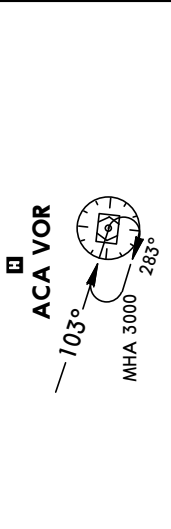
SID	ROUTING
<b>ACAPULCO 3A</b>	Climb via ACA R103 to D7.0 ACA (or 1200 in case of DME failure), then turn RIGHT within 10 NM to ACA VOR and cross ACA VOR according to the MCA or ATC instructions.
<b>KATRA 3</b>	Climb via ACA R103 and continue climbing on ACA R103 to KATRA and continue on the assigned route or ATC instructions.
<b>OMVIT 1A TEXCA 3A</b>	Climb via ACA R103 to D7.0 ACA, then turn LEFT and proceed on the ACA D10.0 Arc to intercept the corresponding radial from ACA VOR to OMVIT or TEXCA and continue on the assigned route or ATC instructions.
<b>SELIS 3</b>	Climb via ACA R103 to D10.0 ACA, then turn LEFT and proceed on a 051° heading, to intercept ACA R080 to SELIS and continue on the assigned route or ATC instructions.





Trans alt: 18500  
 Apt Elev 15

**ACAPULCO 4B (ACA4B) [ACA4B]**  
**NICOS 4 (NICOS4) [NICOS4]**  
**OMVIT 2B (OMVIT2B) [OMVIT2B]**  
**TEXCA 3B (TEXCA3B) [TEXCA3B]**  
**VIDRU 2 (VIDRU2) [VIDRU2]**  
**DEPARTURES (RWY 28)**



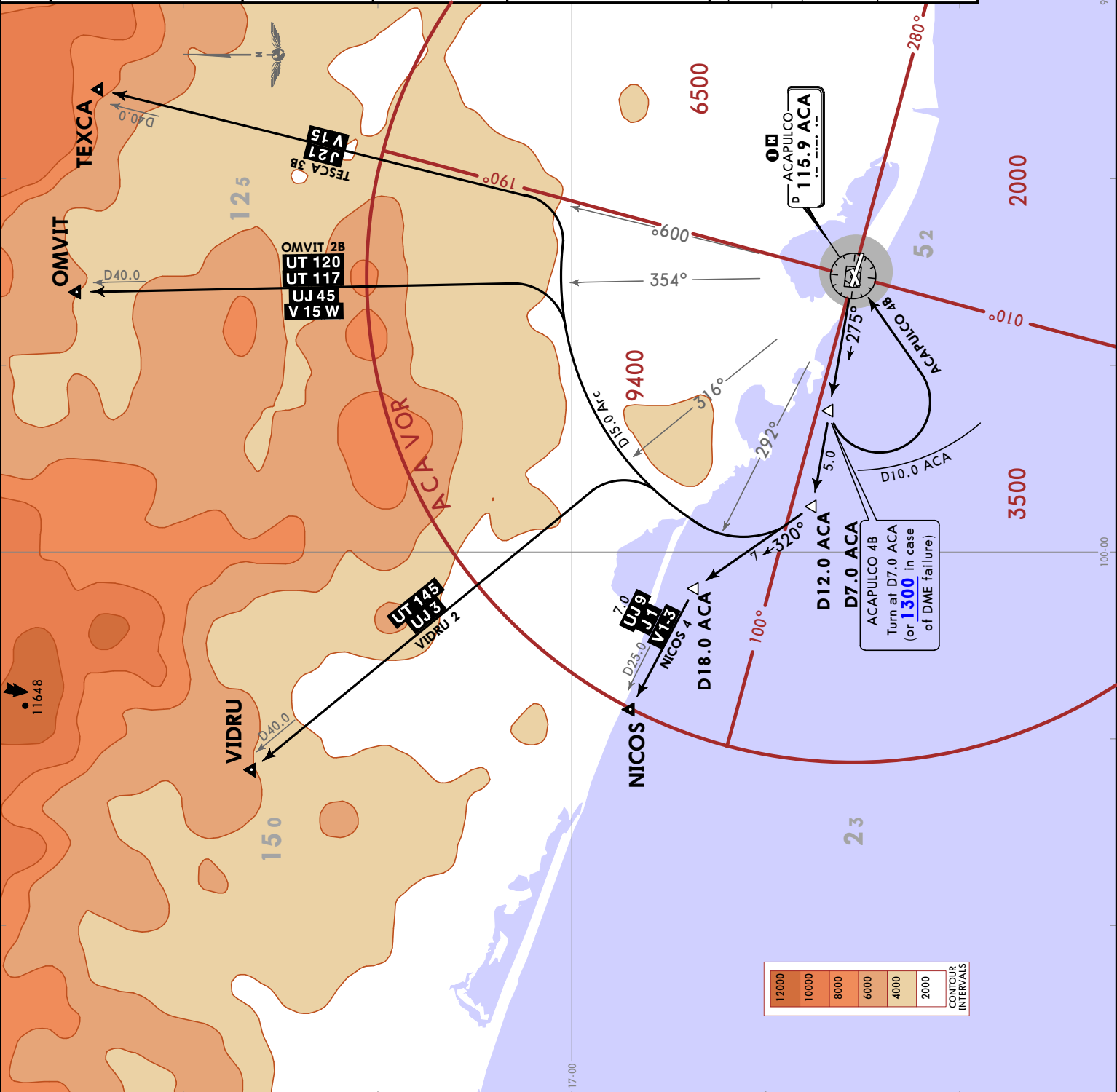
These SIDs require minimum climb gradients:

ACAPULCO 4B: 300 FT/NM to 3000.  
 NICOS 4: 300 FT/NM to 4000.  
 OMVIT 2B, TEXCA 3B: 300 FT/NM to 9000.  
 VIDRU 2: 300 FT/NM to 13000.

Gnd speed-KT	75	100	150	200	250	300
300 FT/NM	375	500	750	1000	1250	1500

MINIMUM CROSSING ALTITUDE	
TEQ	V-15
VOKAM	V-21
OAX	V-3
PXM	V-1
YEDRA	V-1-3
ZIH	J-21
UPN	UJ-16
ELLILA	J-1, UJ-9
ESPOS	UL-344
TLC	J-1, UJ-9
TEQ	UJ-3, UT-145
	UT-120
	UT-117
	UJ-45
	V-15W

SID	ROUTING
<b>ACAPULCO 4B</b>	Climb via ACA R275 to D7.0 ACA (or 1300 in case of DME failure), then turn LEFT within D10.0 ACA to ACA VOR and cross ACA VOR according to the MCA or ATC instructions.
<b>NICOS 4</b>	Climb via ACA R275 to D12.0 ACA, then turn RIGHT and proceed on a 320° heading to intercept ACA R292 to NICOS and continue on the assigned route or ATC instructions.
<b>OMVIT 2B TEXCA 3B VIDRU 2</b>	Climb via ACA R275 to D12.0 ACA, then turn RIGHT and proceed on the ACA D15.0 Arc to intercept the corresponding radial from ACA VOR to OMVIT, TEXCA or VIDRU and continue on the assigned route or ATC instructions.





MMAA/ACA

JEPPESEN

ACAPULCO, MEXICO

GEN JUAN N ALVAREZ INTL 19 JAN 24

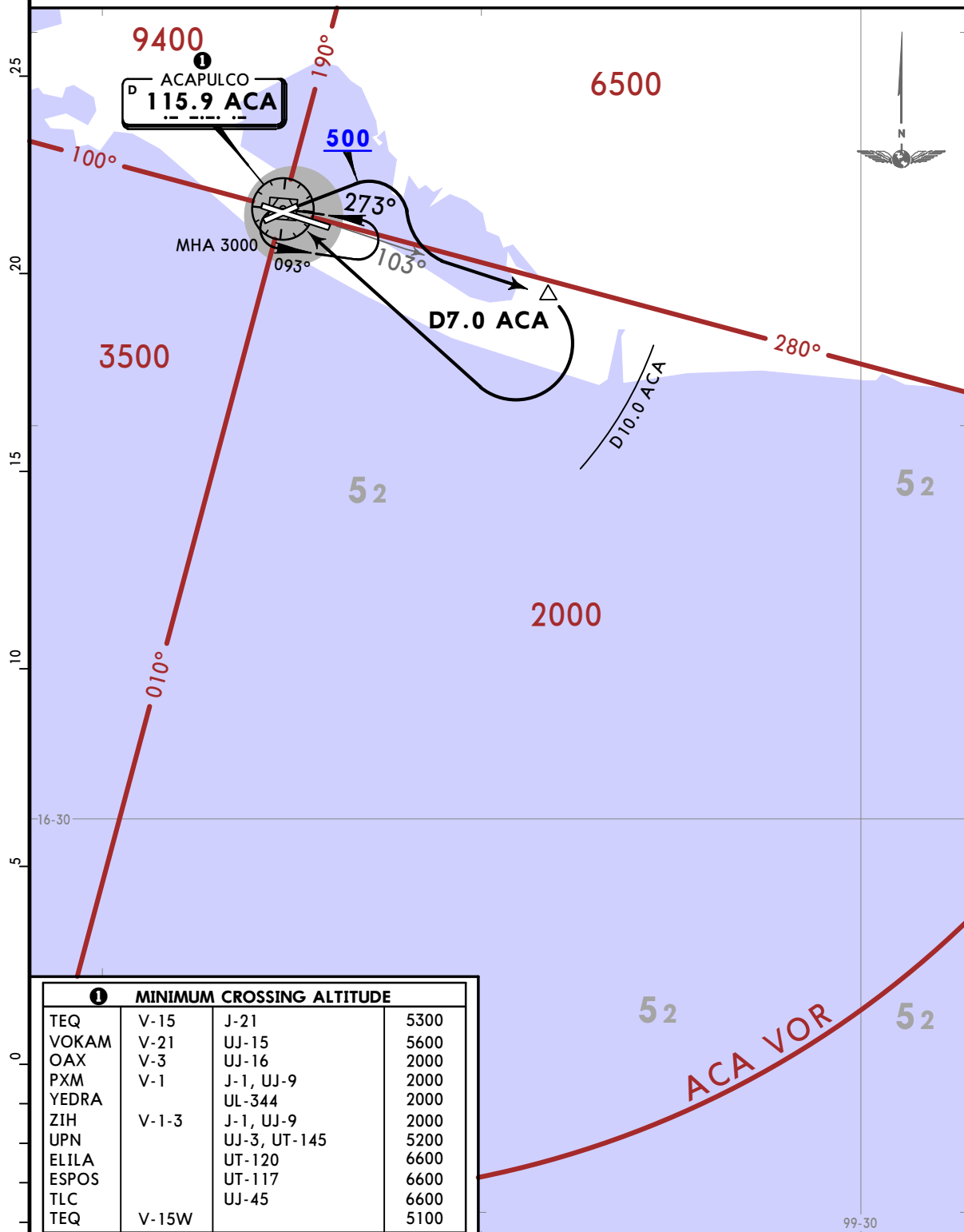
10-3B

Eff 25 Jan

SID

Apt Elev 15	Trans alt: 18500
----------------	------------------

ACAPULCO 3C DEPARTURE  
(ACA3C)  
(RWY 06)



① MINIMUM CROSSING ALTITUDE			
TEQ	V-15	J-21	5300
VOKAM	V-21	UJ-15	5600
OAX	V-3	UJ-16	2000
PXM	V-1	J-1, UJ-9	2000
YEDRA		UL-344	2000
ZIH	V-1-3	J-1, UJ-9	2000
UPN		UJ-3, UT-145	5200
ELILA		UT-120	6600
ESPOS		UT-117	6600
TLC		UJ-45	6600
TEQ	V-15W		5100

**INITIAL CLIMB**  
Climb on runway heading until reaching 500.

**ROUTING**  
Turn RIGHT and intercept the ACA R103 outbound to D7.0 ACA, turn RIGHT within D10.0 ACA to ACA VOR and cross ACA VOR according to the MCA ① or ATC instructions.

MMAA/ACA

JEPPESEN

ACAPULCO, MEXICO

GEN JUAN N ALVAREZ INTL 19 JAN 24

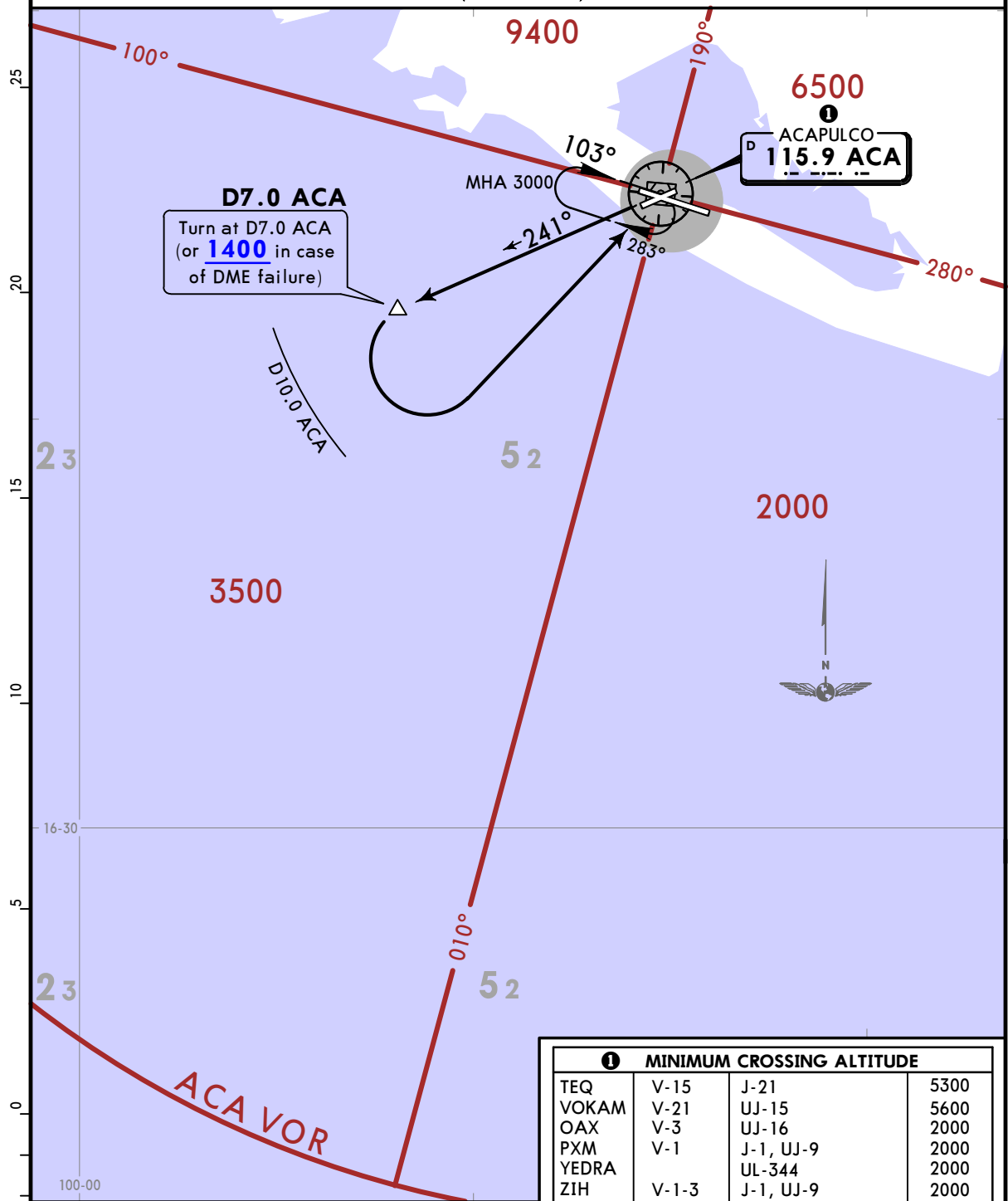
10-3C

Eff 25 Jan

SID

Apt Elev 15	Trans alt: 18500
----------------	------------------

**ACAPULCO 5D DEPARTURE  
(ACA5D)  
(RWY 24)**



This SID requires a minimum climb gradient of 340 FT/NM (5.59%) until crossing 3000.

Gnd speed-KT	75	100	150	200	250	300
340 FT/NM	425	567	850	1133	1417	1700

① MINIMUM CROSSING ALTITUDE			
TEQ	V-15	J-21	5300
VOKAM	V-21	UJ-15	5600
OAX	V-3	UJ-16	2000
PXM	V-1	J-1, UJ-9	2000
YEDRA		UL-344	2000
ZIH	V-1-3	J-1, UJ-9	2000
UPN		UJ-3, UT-145	5200
ELILA		UT-120	6600
ESPOS		UT-117	6600
TLC		UJ-45	6600
TEQ	V-15W		5100

**INITIAL CLIMB**

Climb via ACA R241 to D7.0 ACA (or 1400 in case of DME failure).

**ROUTING**

Turn LEFT within D10.0 ACA and cross ACA VOR according to the MCA ① or ATC instructions.

CHANGES: Airport elevation, MCA table revised, climb gradient.

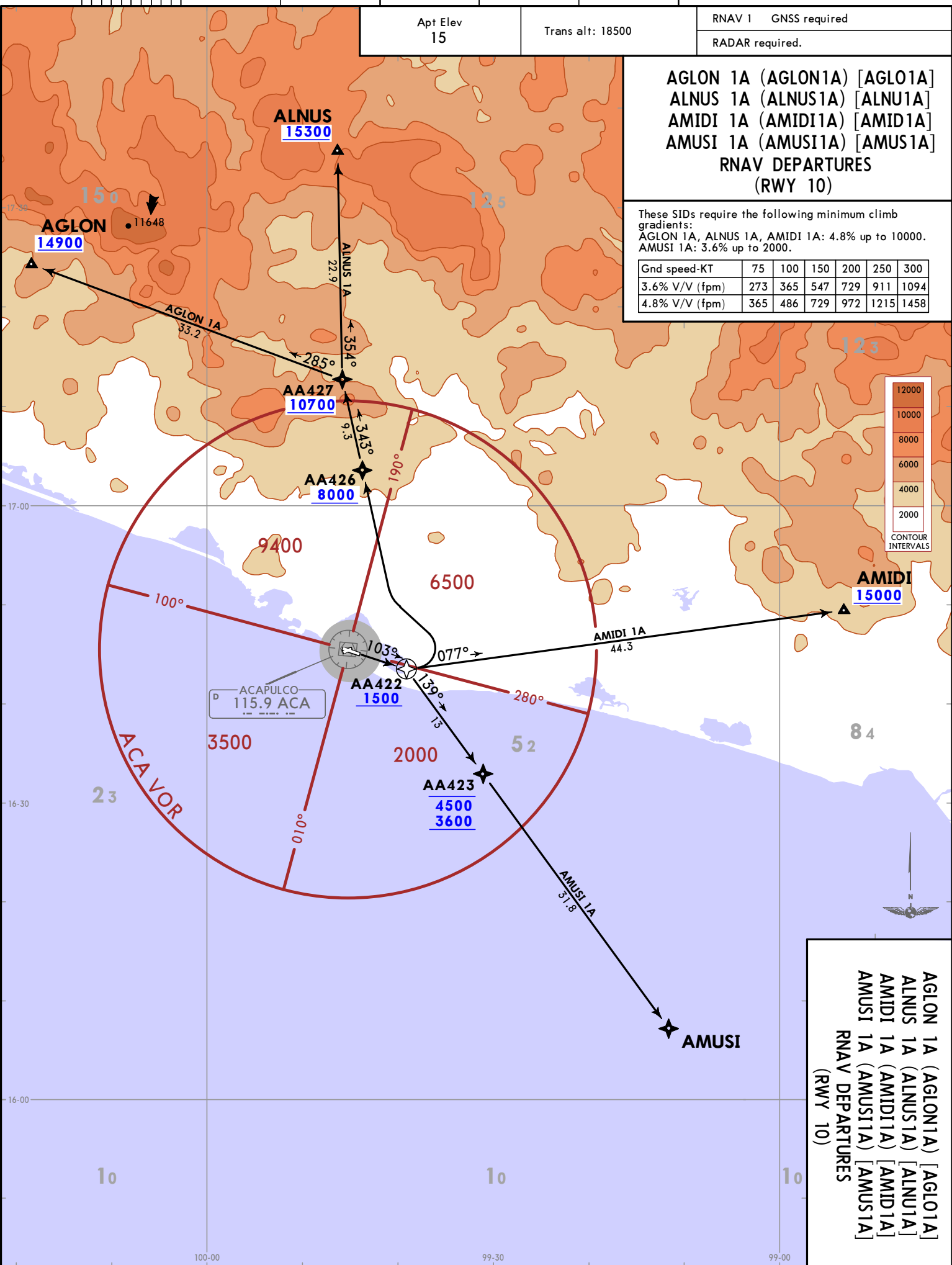
**MMAA/ACA**  
 GEN JUAN N ALVAREZ INTL

Apt Elev 15	Trans alt: 18500	RNAV 1 GNSS required
		RADAR required.

**AGLON 1A (AGLON1A) [AGLO1A]**  
**ALNUS 1A (ALNUS1A) [ALNU1A]**  
**AMIDI 1A (AMIDI1A) [AMID1A]**  
**AMUSI 1A (AMUSI1A) [AMUS1A]**  
**RNAV DEPARTURES**  
**(RWY 10)**

These SIDs require the following minimum climb gradients:  
 AGLON 1A, ALNUS 1A, AMIDI 1A: 4.8% up to 10000.  
 AMUSI 1A: 3.6% up to 2000.

Gnd speed-KT	75	100	150	200	250	300
3.6% V/V (fpm)	273	365	547	729	911	1094
4.8% V/V (fpm)	365	486	729	972	1215	1458



**AGLON 1A (AGLON1A) [AGLO1A]**  
**ALNUS 1A (ALNUS1A) [ALNU1A]**  
**AMIDI 1A (AMIDI1A) [AMID1A]**  
**AMUSI 1A (AMUSI1A) [AMUS1A]**  
**RNAV DEPARTURES**  
**(RWY 10)**

19 JAN 24 10-3D  
**JEPPESSEN ACAPULCO, MEXICO**  
 EFF 25 JAN  
**RNAV SID**

CHANGES: Airport elevation, climb gradient revised, routing text removed.

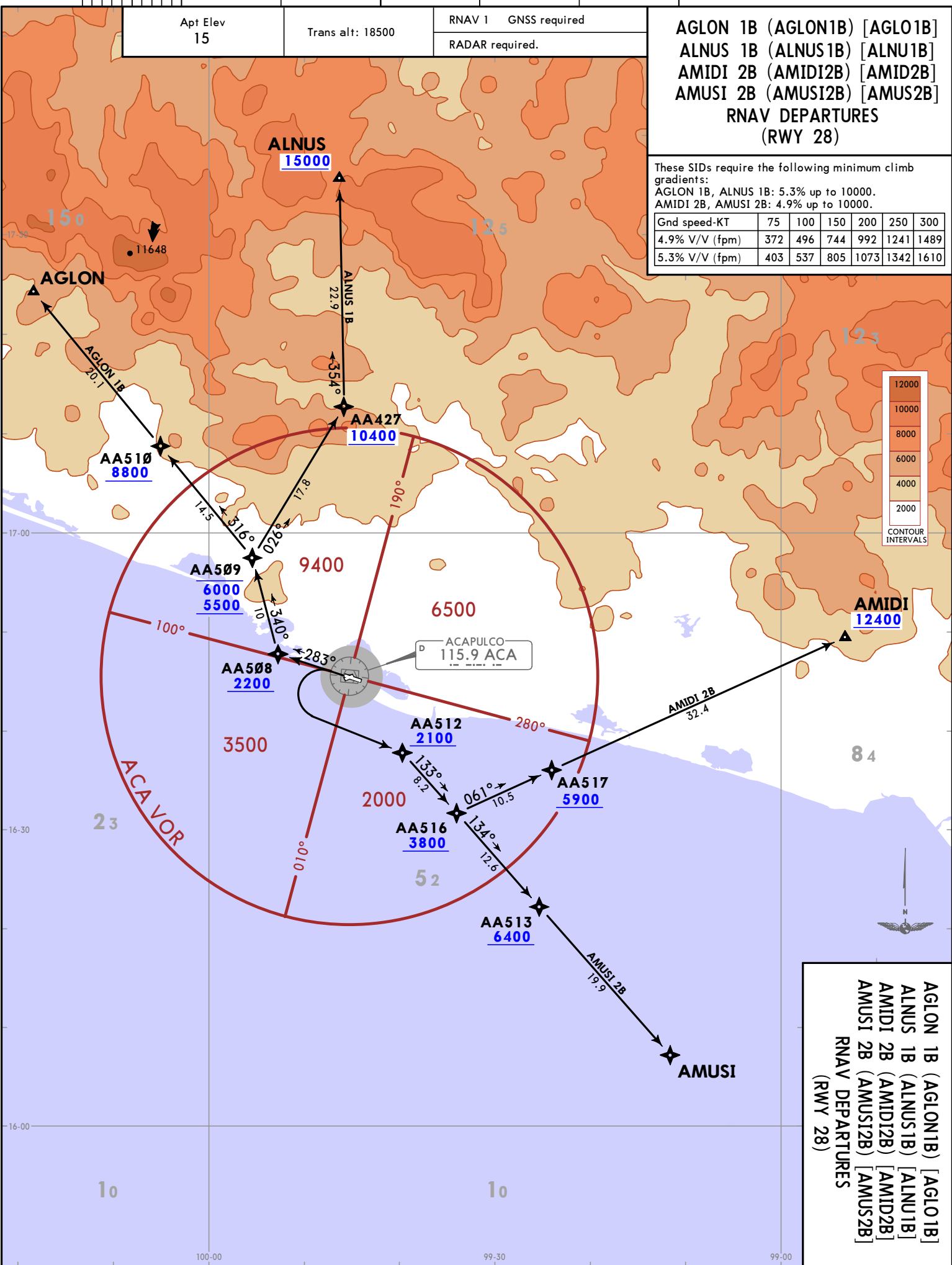
Apt Elev 15	Trans alt: 18500	RNAV 1	GNSS required
		RADAR required.	

**AGLON 1B (AGLON1B) [AGLO1B]**  
**ALNUS 1B (ALNUS1B) [ALNU1B]**  
**AMIDI 2B (AMIDI2B) [AMID2B]**  
**AMUSI 2B (AMUSI2B) [AMUS2B]**  
**RNAV DEPARTURES**  
**(RWY 28)**

These SIDs require the following minimum climb gradients:

AGLON 1B, ALNUS 1B: 5.3% up to 10000.  
 AMIDI 2B, AMUSI 2B: 4.9% up to 10000.

Gnd speed-KT	75	100	150	200	250	300
4.9% V/V (fpm)	372	496	744	992	1241	1489
5.3% V/V (fpm)	403	537	805	1073	1342	1610



**AGLON 1B (AGLON1B) [AGLO1B]**  
**ALNUS 1B (ALNUS1B) [ALNU1B]**  
**AMIDI 2B (AMIDI2B) [AMID2B]**  
**AMUSI 2B (AMUSI2B) [AMUS2B]**  
**RNAV DEPARTURES**  
**(RWY 28)**

**MMAA/ACA**  
 GEN JUAN N ALVAREZ INTL

19 JAN 24 (10-3E) **JEPPESSEN** ACAPULCO, MEXICO  
 EFT 25 Jan RNAV SID

© JEPPESSEN, 2017, 2024. ALL RIGHTS RESERVED.

# MMAA/ACA

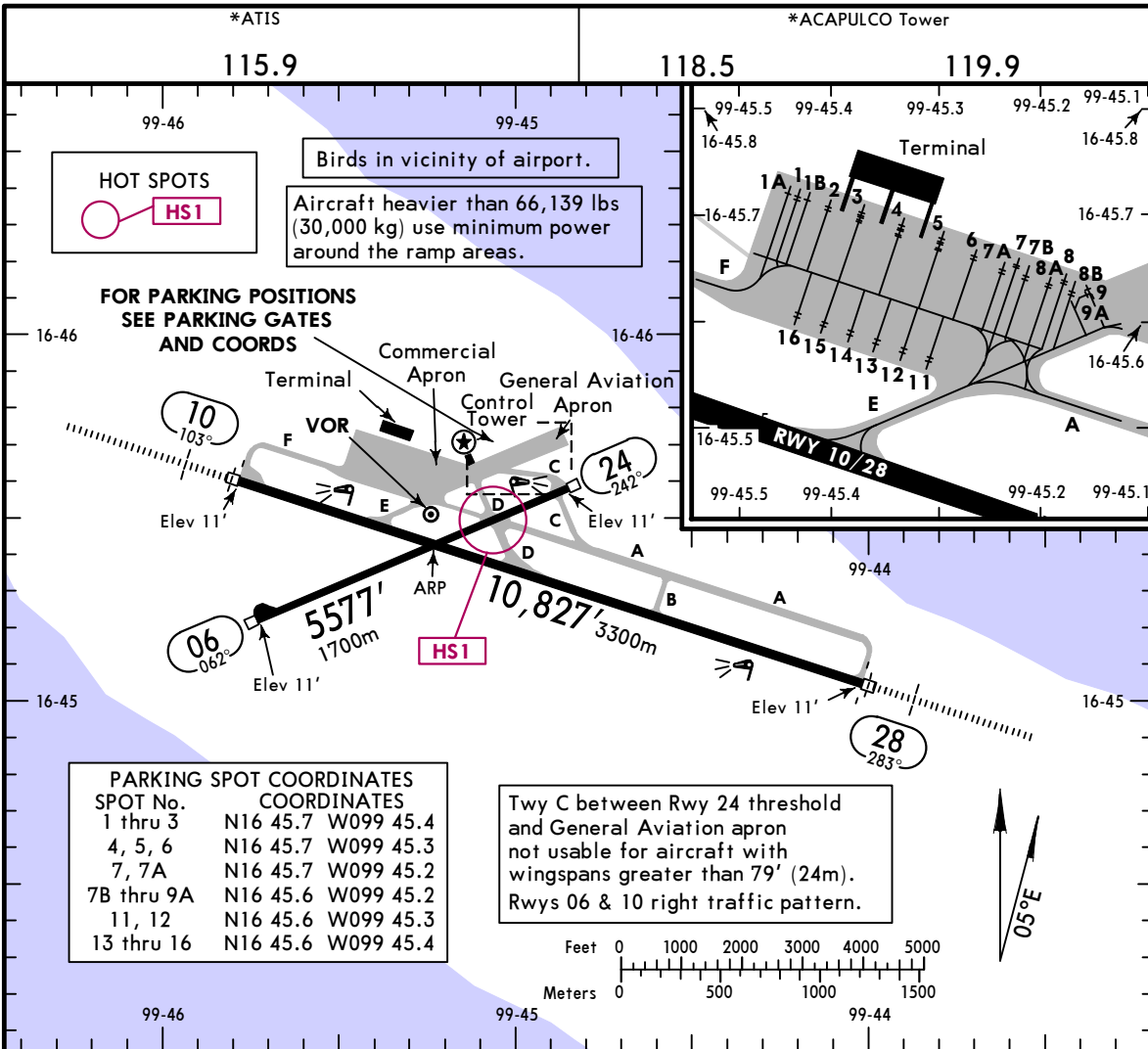
Apt Elev 15'  
N16 45.4 W099 45.2



2 FEB 24 (10-9)

# ACAPULCO, MEXICO

GEN JUAN N ALVAREZ INTL



**HOT SPOTS**  
HS1

Birds in vicinity of airport.  
Aircraft heavier than 66,139 lbs (30,000 kg) use minimum power around the ramp areas.

FOR PARKING POSITIONS SEE PARKING GATES AND COORDS

SPOT No.	COORDINATES
1 thru 3	N16 45.7 W099 45.4
4, 5, 6	N16 45.7 W099 45.3
7, 7A	N16 45.7 W099 45.2
7B thru 9A	N16 45.6 W099 45.2
11, 12	N16 45.6 W099 45.3
13 thru 16	N16 45.6 W099 45.4

Twy C between Rwy 24 threshold and General Aviation apron not usable for aircraft with wingspans greater than 79' (24m).  
Rwys 06 & 10 right traffic pattern.

**ADDITIONAL RUNWAY INFORMATION**

RWY	LANDING BEYOND	USABLE LENGTHS			WIDTH
		Threshold	Glide Slope	TAKE-OFF	
06 ① 24	HIRL(60m) PAPI-L (angle 3.0°)				115' 35m
10 28	HIRL(60m) ② ALSF-I PAPI-L (angle 3.10°)		9693' 2954m		148'
	HIRL(60m) ② ALSF-I PAPI-L (angle 3.0°)		9669' 2947m		45m

- ① Maximum aircraft category usage is "C".
- ② Length 900m.

**HOT SPOTS**

HS1

For information only, not to be construed as ATC instructions.

HS1 Aircraft or vehicles at Twys A and D hold short of Rwy 06/24.

State	TAKE-OFF				FOR FILING AS ALTERNATE	
	Rwy 10	Rwy 24	Rwy 06	Rwy 28	Precision	Non-Precision
1 & 2 Eng	400'- V1 V1600m	400'- V1 V1600m	400'- V1 V1600m	400'- V1 1/2 V2400m	A B 600'- V2	800'- V2
3 & 4 Eng	V1/2 V800m	200'- V1/2 V1600m	300'- V1 V1600m	300'- V1 V1600m	C D V3200m	V3200m

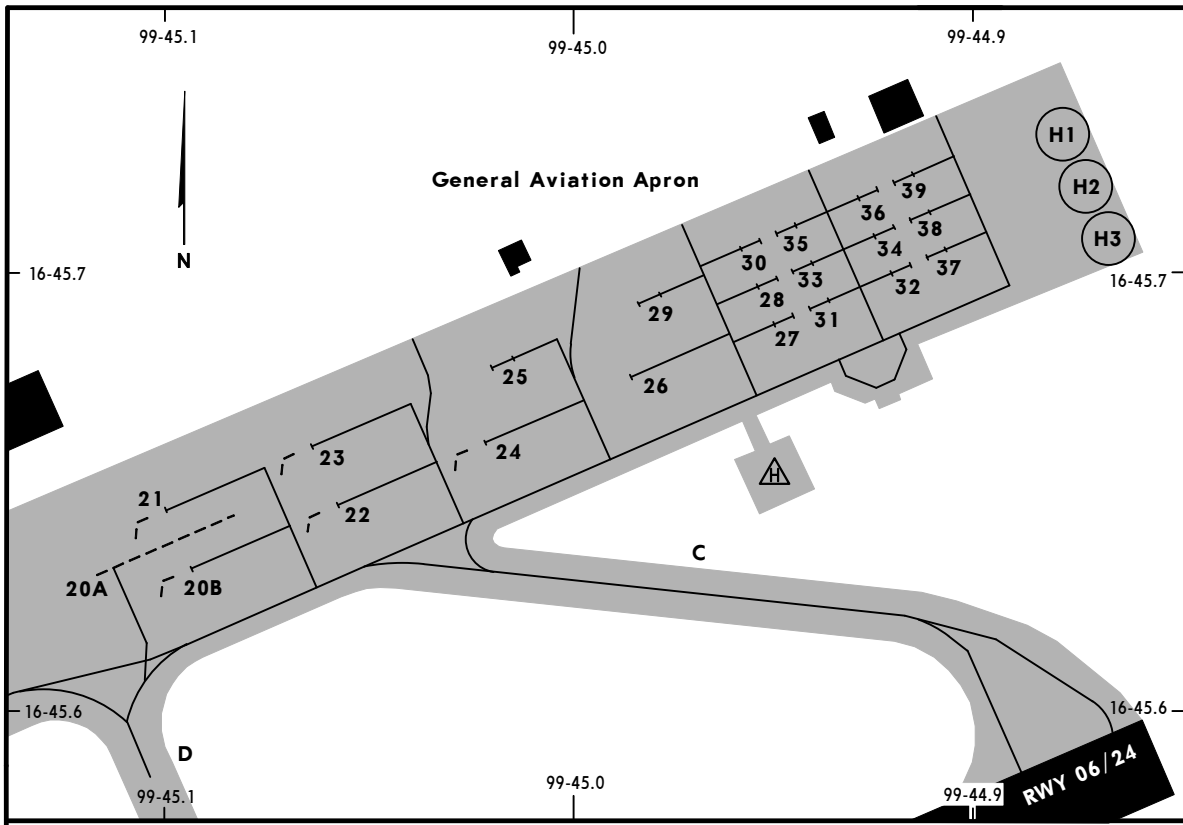
MMAA/ACA



ACAPULCO, MEXICO

2 FEB 24 10-9A

GEN JUAN N ALVAREZ INTL



**PARKING POSITION COORDINATES**

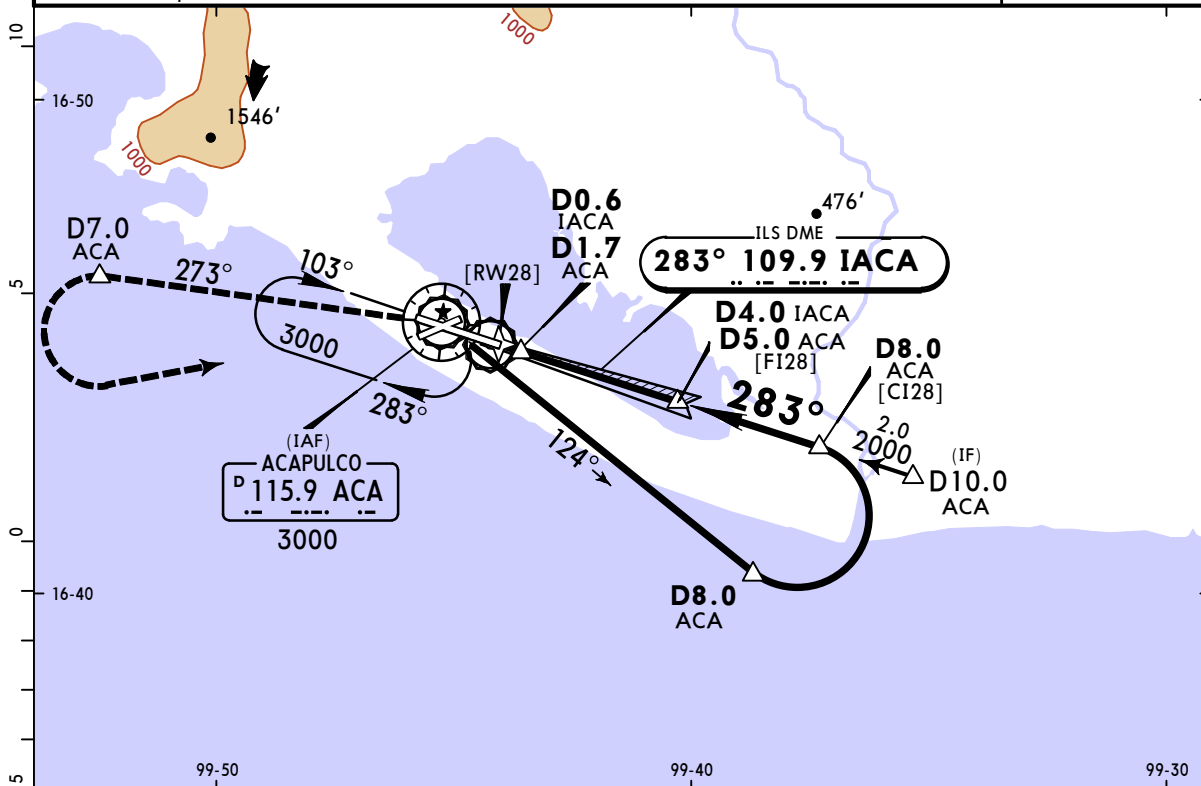
POSITION No.	COORDINATES
20A thru 22	N16 45.6 W099 45.1
23	N16 45.7 W099 45.1
24 thru 26	N16 45.7 W099 45.0
27, 28	N16 45.7 W099 44.9
29	N16 45.7 W099 45.0
30 thru 39	N16 45.7 W099 44.9
H1 thru H3	N16 45.7 W099 44.9

**MMAA/ACA**  
**GEN JUAN N ALVAREZ INTL**

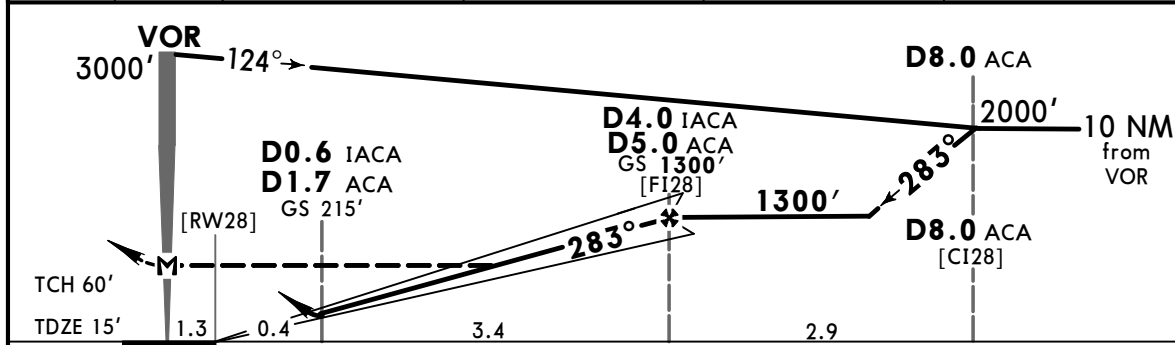
**JEPPESEN**  
 19 JAN 24  
 Eff 25 Jan **(11-1)**

**ACAPULCO, MEXICO**  
**ILS or LOC Z Rwy 28**

*ATIS <b>115.9</b>		ACAPULCO Approach (R) <b>119.9</b>		*ACAPULCO Tower <b>118.5</b> <b>119.9</b>	
LOC IACA <b>109.9</b>	Final Apch Crs <b>283°</b>	D4.0 IACA D5.0 ACA <b>1300'</b> (1285')	ILS DA(H) <b>215'</b> (200')	Apt Elev 15' TDZE 15'	
<b>MISSED APCH: Climb outbound via ACA VOR R-273 to D7.0 ACA then turn LEFT within 10 NM to ACA VOR at the minimum holding altitude.</b>					
Alt Set: IN (MB on req)		Trans level: FL 195		Trans alt: 18500'	
VOR DME required.					MSA ACA VOR



LOC	IACA DME	1.0	2.0	3.0	4.0
(GS out)	ALTITUDE	332'	650'	970'	1300'



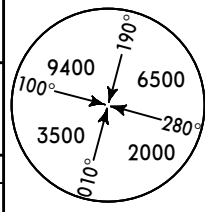
Gnd speed-Kts	70	90	100	120	140	160	ALSF-I PAPI	ACA via <b>115.9</b> to <b>D7.0</b> <b>R-273</b> ACA	
GS	3.00°	372	478	531	637	743			849
MAP at VOR									
FAF to MAP	5.0	4:17	3:20	3:00	2:30	2:09	1:53		

State		STRAIGHT-IN LANDING		CIRCLE-TO-LAND	
ILS DA(H) <b>215'</b> (200')		LOC (GS out) MDA(H) <b>500'</b> (485')		Max Kts	
ALS out		ALS out		MDA(H)	
A		V3/4	V1	90	V1
B	V3/4	V1200m	V1600m	120	580'(565') V1600m
C	V1200m	V1	V1 1/4	140	580'(565') V1 1/2
D		V1600m	V2000m	165	580'(565') V2
		V1 1/4	V2400m		V3200m

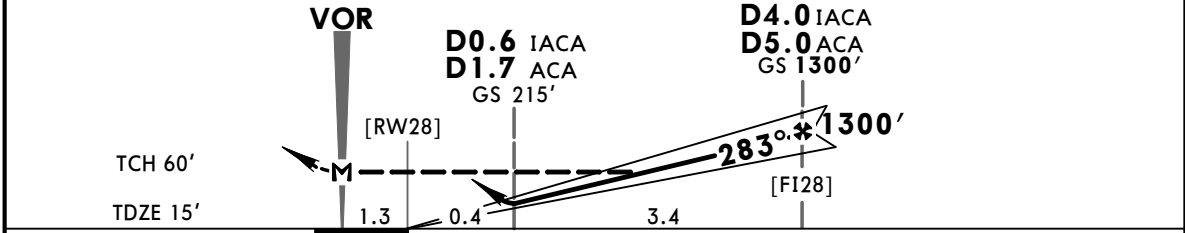


**MMAA/ACA** **JEPPESEN** **ACAPULCO, MEXICO**  
**GEN JUAN N ALVAREZ INTL** **Eff 25 Jan** **(11-2)** **ILS or LOC Y Rwy 28**

*ATIS 115.9		ACAPULCO Approach (R) 119.9		*ACAPULCO Tower 118.5 119.9	
LOC IACA <b>109.9</b>	Final Apch Crs <b>283°</b>	D4.0 IACA D5.0 ACA <b>1300'</b> (1285')	ILS DA(H) <b>215'</b> (200')	Apt Elev 15' TDZE 15'	
<b>MISSED APCH:</b> Climb outbound via ACA VOR R-273 to D7.0 ACA then turn LEFT within 10 NM to ACA VOR at the minimum holding altitude.					
Alt Set: IN (MB on req)		Trans level: FL 195		Trans alt: 18500'	
1. VOR DME required. 2. In case of DME failure at any point during the procedure, maintain last altitude and proceed to the station in accordance with the ATC instructions.					



RECOMMENDED ALTITUDES	
LOC (GS out)	
IACA DME	ALTITUDE
4.0	1300'
3.0	970'
2.0	650'
1.0	332'



Gnd speed-Kts	70	90	100	120	140	160	ALS F-I PAPI	↑ via <b>115.9</b> to <b>D7.0</b> <b>R-273</b> ACA	
GS	3.00°	372	478	531	637	743			849
MAP at VOR									
FAF to MAP	5.0	4:17	3:20	3:00	2:30	2:09	1:53		

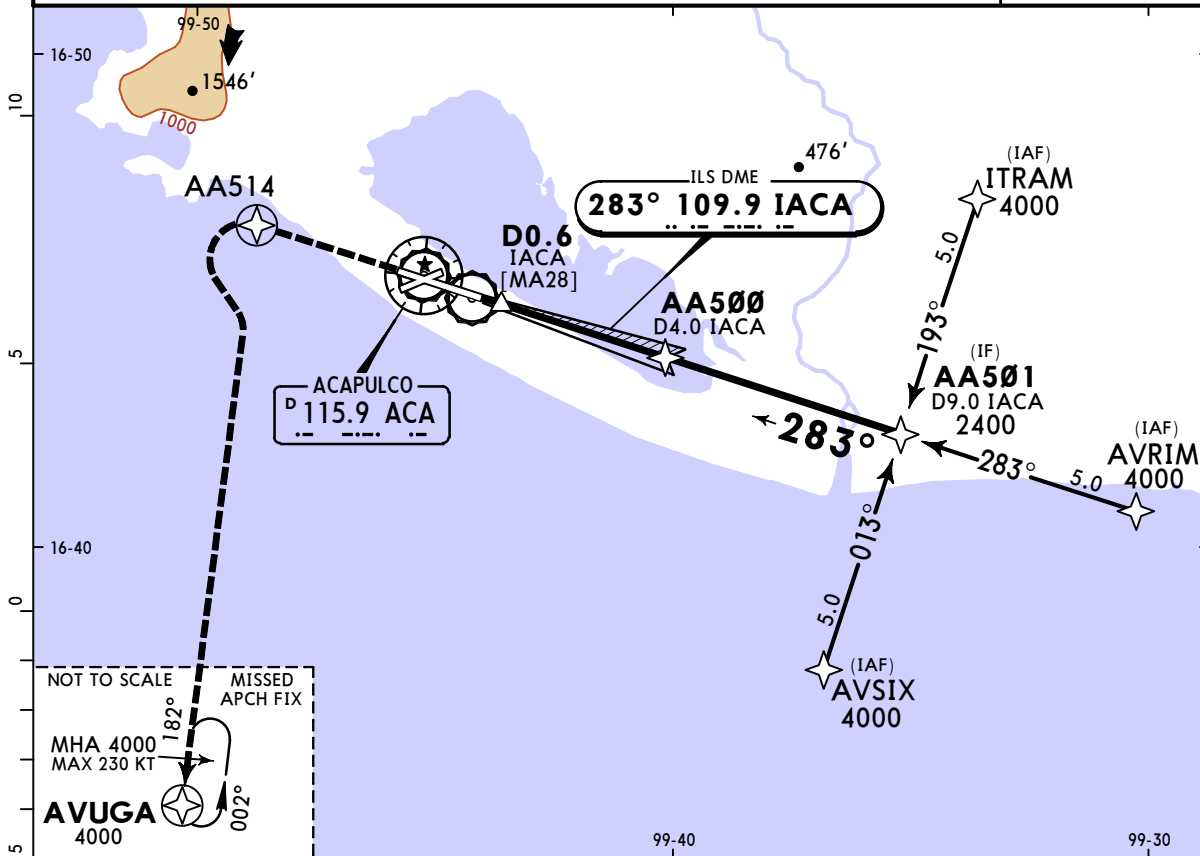
State	STRAIGHT-IN LANDING		LOC (GS out)		CIRCLE-TO-LAND	
	ILS DA(H)	ALS out	MDA(H)	ALS out	Max Kts	MDA(H)
A	V3/4 V1200m	V1 V1600m	500' (485')	V3/4	90	V1
B				V1200m	120	V1600m
C				V1600m	140	V2400m
D				V2000m	165	V3200m

**MMAA/ACA**  
**GEN JUAN N ALVAREZ INTL**

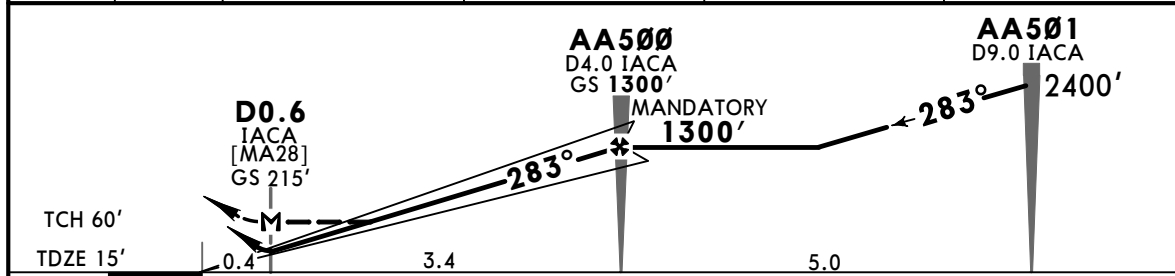
**JEPPESSEN**  
 2 FEB 24 **(11-3)**

**ACAPULCO, MEXICO**  
**ILS or LOC X Rwy 28**

*ATIS <b>115.9</b>		ACAPULCO Approach (R) <b>119.9</b>		*ACAPULCO Tower <b>118.5</b> <b>119.9</b>	
LOC IACA <b>109.9</b>	Final Apch Crs <b>283°</b>	AA500 MANDATORY <b>1300'</b> (1285')	ILS DA(H) <b>215'</b> (200')	Apt Elev 15' TDZE 15'	
<b>MISSED APCH: Climb on runway track to AA514 and proceed on the missed approach to holding pattern on AVUGA at 4000'.</b>					
Alt Set: IN (MB on req)		Trans level: FL 195		Trans alt: 18500'	
1. DME required. 2. GNSS required and Operative Radar. 3. For initial, intermediate, and missed approach, RNAV 1 required.					



LOC (GS out)	IACA DME	1.0	2.0	3.0	4.0
	ALTITUDE	332'	650'	970'	1300'



Gnd speed-Kts	70	90	100	120	140	160	ALSFI	PAPI	RWY Track to AA514
GS	3.00°	372	478	531	637	743			
MAP at D0.6 IACA									
FAF to MAP	3.4	2:55	2:16	2:02	1:42	1:27	1:16		

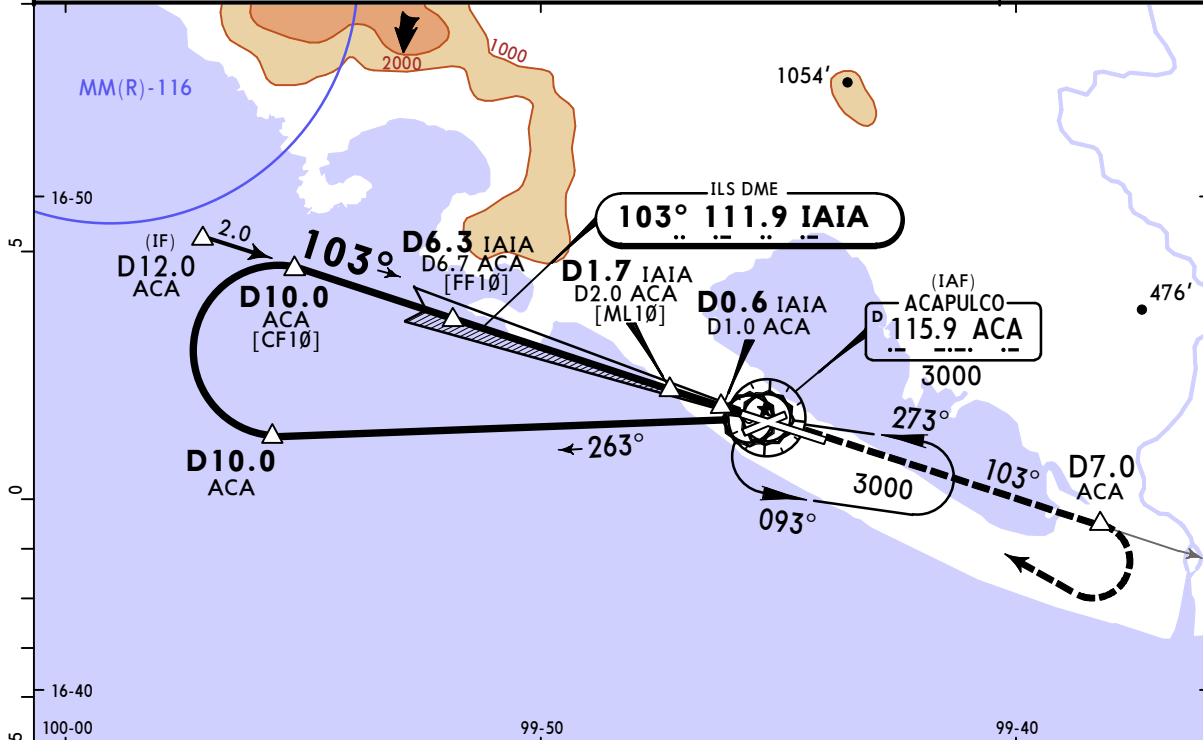
State	STRAIGHT-IN LANDING				CIRCLE-TO-LAND	
	ILS DA(H) <b>215'</b> (200')		LOC (GS out) MDA(H) <b>500'</b> (485')		Max Kts	MDA(H)
	ALS out		ALS out			
A			V3/4 V1200m	V1 V1600m	90	580'(565')
B	V3/4 V1200m	V1 V1600m	V1 V1600m	V1 1/4 V2000m	120	580'(565')
C			V1 1/4 V2000m	V2 V3200m	140	580'(565')
D					165	580'(565')

**MMAA/ACA**  
**GEN JUAN N ALVAREZ INTL**

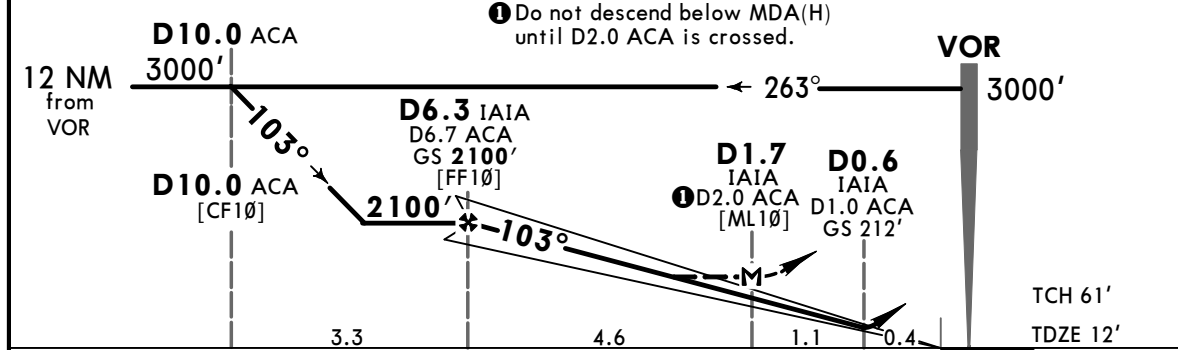
**JEPPESSEN**  
 2 FEB 24 **(11-4)**

**ACAPULCO, MEXICO**  
**ILS or LOC Z Rwy 10**

*ATIS <b>115.9</b>		ACAPULCO Approach (R) <b>119.9</b>		*ACAPULCO Tower <b>118.5</b> <b>119.9</b>	
LOC IAIA <b>111.9</b>	Final Apch Crs <b>103°</b>	<b>D6.3 IAIA</b> <b>D6.7 ACA</b> <b>2100' (2088')</b>	ILS DA(H) <b>212' (200')</b>	Apt Elev 15' TDZE 12'	
<b>MISSED APCH:</b> Climb outbound via ACA VOR R-103 to D7.0 ACA, then turn RIGHT within 10 NM to ACA VOR at the minimum holding altitude. Alt Set: IN (MB on req)    Trans level: FL 195    Trans alt: 18500' VOR DME required.					



LOC (GS out)	IAIA DME	6.3	5.0	4.0	3.0
	ALTITUDE	2100'	1666'	1337'	1008'



Gnd speed-Kts	70	90	100	120	140	160	ALSF-I PAPI ↑ via <b>115.9</b> to <b>D7.0</b> <b>R-103</b> ACA
GS	3.10°	384	494	548	658	768	
MAP at D1.7 IAIA							
FAF to MAP	4.6	3:57	3:04	2:46	2:18	1:58	

State		STRAIGHT-IN LANDING		CIRCLE-TO-LAND	
		ILS DA(H) <b>212' (200')</b>	LOC (GS out) MDA(H) <b>580' (568')</b>		
		ALS out	ALS out	Max Kts	MDA(H)
A	V1 V1600m			90	640'(625')
B				120	
C				140	640'(625')
D				165	
					V1 V1600m
					V1 3/4 V2800m
					V2 V3200m

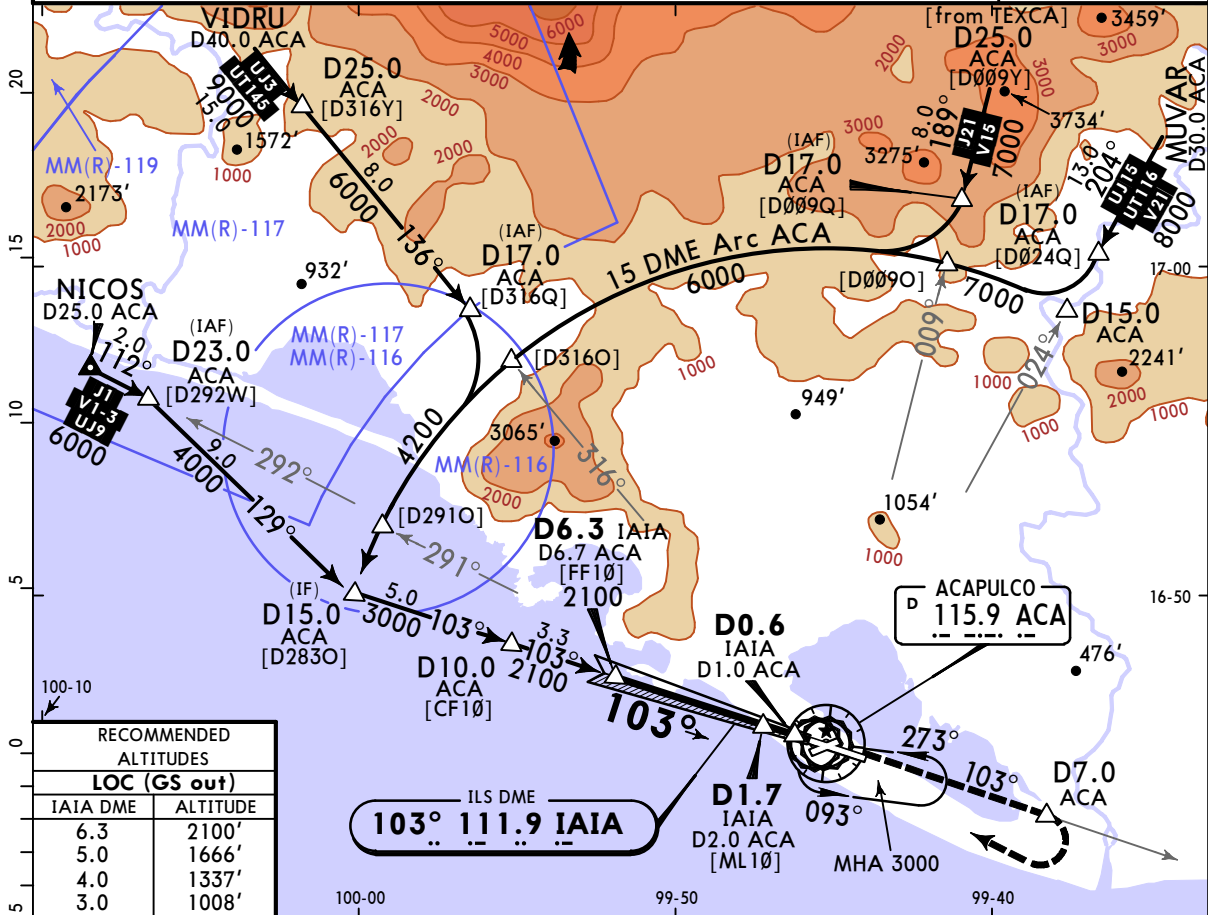
**MMAA/ACA**  
GEN JUAN N ALVAREZ INTL



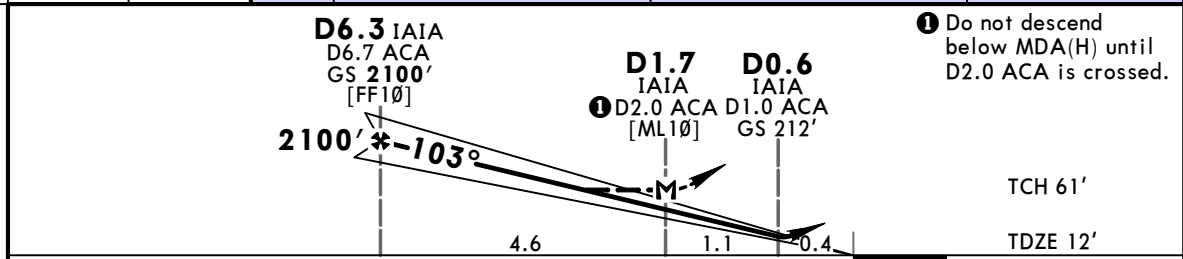
**ACAPULCO, MEXICO**  
ILS or LOC Y Rwy 10

2 FEB 24 (11-5)

*ATIS <b>115.9</b>		ACAPULCO Approach (R) <b>119.9</b>		*ACAPULCO Tower <b>118.5</b> <b>119.9</b>	
LOC IAIA <b>111.9</b>	Final Apch Crs <b>103°</b>	<b>D6.3 IAIA</b> <b>D6.7 ACA</b> 2100' (2088')	ILS DA(H) <b>212' (200')</b>	Apt Elev 15'	TDZE 12'
<b>MISSED APCH:</b> Climb outbound via ACA VOR R-103 to D7.0 ACA, then turn RIGHT within 10 NM to ACA VOR at the minimum holding altitude.					
Alt Set: IN (MB on req)		Trans level: FL 195		Trans alt: 18500'	
1. VOR DME required. 2. In case of DME failure during the procedure, maintain last assigned altitude and proceed to the station in accordance with ATC instructions.					
					MSA ACA VOR



RECOMMENDED ALTITUDES	
LOC (GS out)	
IAIA DME	ALTITUDE
6.3	2100'
5.0	1666'
4.0	1337'
3.0	1008'

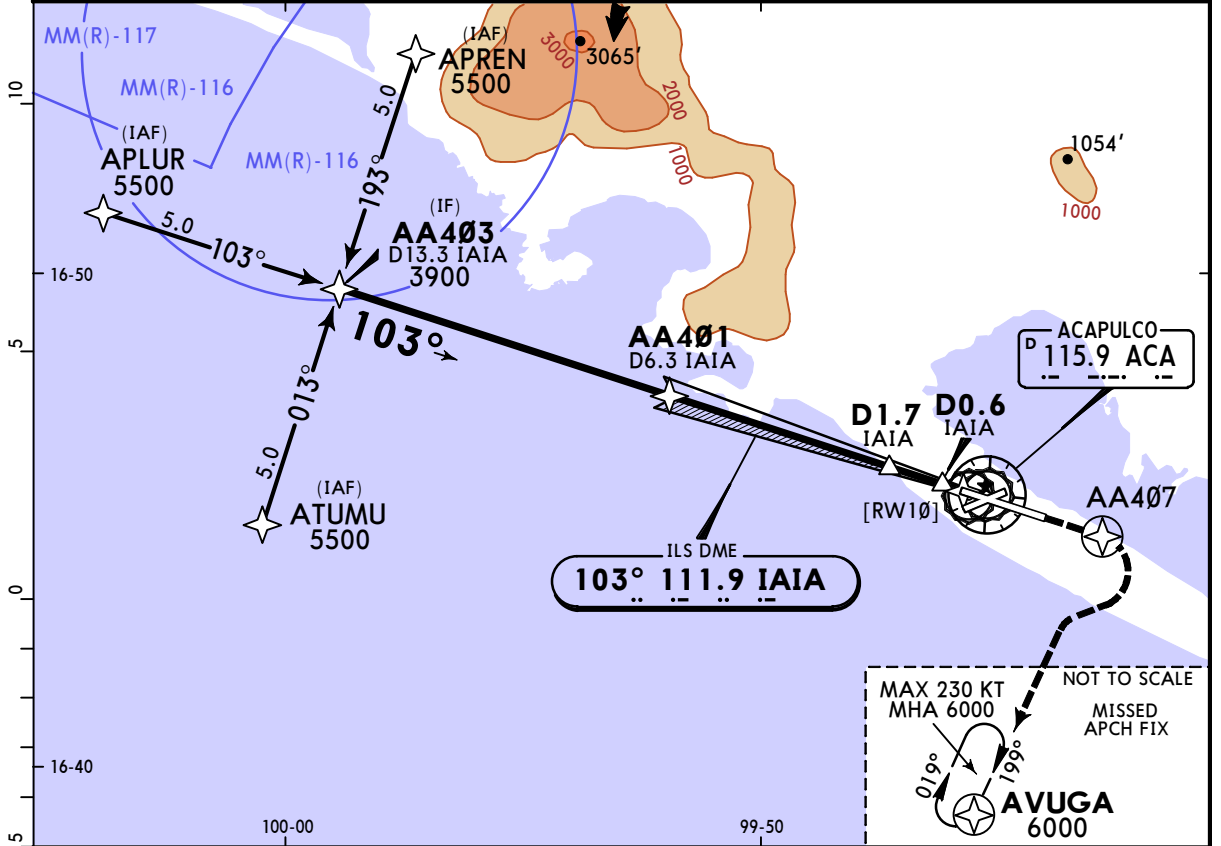


Gnd speed-Kts	70	90	100	120	140	160	ALSIF-1 PAPI	↑ via <b>115.9</b> to <b>D7.0</b> <b>R-103</b> ACA	
GS	3.10°	384	494	548	658	768			878
MAP at D1.7 IAIA									
FAF to MAP	4.6	3:57	3:04	2:46	2:18	1:58	1:43		

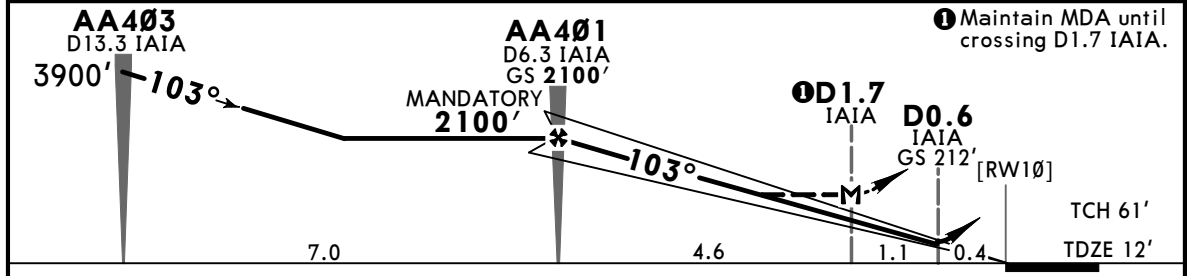
State				STRAIGHT-IN LANDING		CIRCLE-TO-LAND	
ILS DA(H) <b>212' (200')</b>		LOC (GS out) MDA(H) <b>580' (568')</b>		Max Kts		MDA(H)	
ALS out		ALS out		90	640' (625')	V1	
A	V1 V1600m	V1		120	640' (625')	V1600m	
B		V1600m		140		V1 3/4	
C		V1 1/2		165		V2800m	
D		V1 3/4				V2	
		V2800m				V3200m	

**MMAA/ACA** **JEPPESEN** **ACAPULCO, MEXICO**  
**GEN JUAN N ALVAREZ INTL** 19 JAN 24 **(11-6)** Eff 25 Jan **ILS or LOC X Rwy 10**

*ATIS <b>115.9</b>		ACAPULCO Approach (R) <b>119.9</b>		*ACAPULCO Tower <b>118.5</b> <b>119.9</b>		
LOC IAIA <b>111.9</b>	Final Apch Crs <b>103°</b>	<b>AA401</b> MANDATORY <b>2100'</b> (2088')	ILS DA(H) <b>212'</b> (200')	Apt Elev 15' TDZE 12'		
<b>MISSED APCH: Climb on runway heading to AA407 and proceed on the missed approach to AVUGA at 6000' and hold.</b>						
Alt Set: IN (MB on req)		Trans level: FL 195		Trans alt: 18500'		
RNAV 1 required for initial, intermediate and missed approach segments.						
1. DME required. 2. GNSS required. 3. Operational RADAR.						
MSA ACA VOR						



LOC	IAIA DME	6.3	5.0	4.0	3.0
(GS out)	ALTITUDE	2100'	1666'	1337'	1008'



Gnd speed-Kts	70	90	100	120	140	160	ALSF-1 PAPI ↑ <b>RWY</b> hdg to <b>AA407</b>
GS	3.10°	384	494	548	658	768	
MAP at D1.7 IAIA							
FAF to MAP	4.6	3:57	3:04	2:46	2:18	1:58	

<b>State</b>				STRAIGHT-IN LANDING		CIRCLE-TO-LAND	
ILS DA(H) <b>212'</b> (200')		LOC (GS out) MDA(H) <b>580'</b> (568')		Max Kts		MDA(H)	
ALS out		ALS out		90	640'(625')	V1 V1600m	
A					120	640'(625')	V1 3/4 V2800m
B	V1 V1600m		V1 3/4 V2800m		140	640'(625')	V1 3/4 V2800m
C					165	640'(625')	V2 V3200m
D							



**MMAA/ACA**  
**GEN JUAN N ALVAREZ INTL**

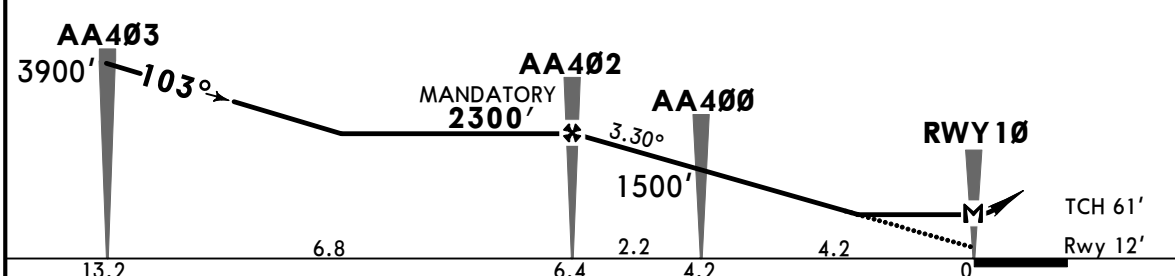
**JEPPESSEN**  
 19 JAN 24 **(12-1)** Eff 25 Jan

**ACAPULCO, MEXICO**  
**RNP Rwy 10**

*ATIS <b>115.9</b>		ACAPULCO Approach (R) <b>119.9</b>		*ACAPULCO Tower <b>118.5</b> <b>119.9</b>	
RNAV	Final Apch Crs <b>103°</b>	<b>AA402</b> MANDATORY <b>2300'</b> (2288')	RNAV MDA(H) <b>620'</b> (608')	Apt Elev 15'	Rwy 12'
<b>MISSED APCH: Climb on runway track to AA407 and proceed on the missed approach to holding pattern on AVUGA at 6000'.</b>					
RNP APCH	Alt Set: IN (MB on req)	Trans level: FL 195	Trans alt: 18500'		
GNSSE required and Operative Radar.					
					MSA ACA VOR



DIST to THR	6.4	6.0	5.0	4.0	3.0	2.0
ALTITUDE	2300'	2160'	1810'	1460'	1120'	770'



Gnd speed-Kts	70	90	100	120	140	160	ALSF PAPI RWY Track to AA407
Descent Angle 3.30°	409	526	584	701	817	934	
MAP at RWY10							
FAF to MAP	6.4	5:29	4:16	3:50	3:12	2:45	2:24

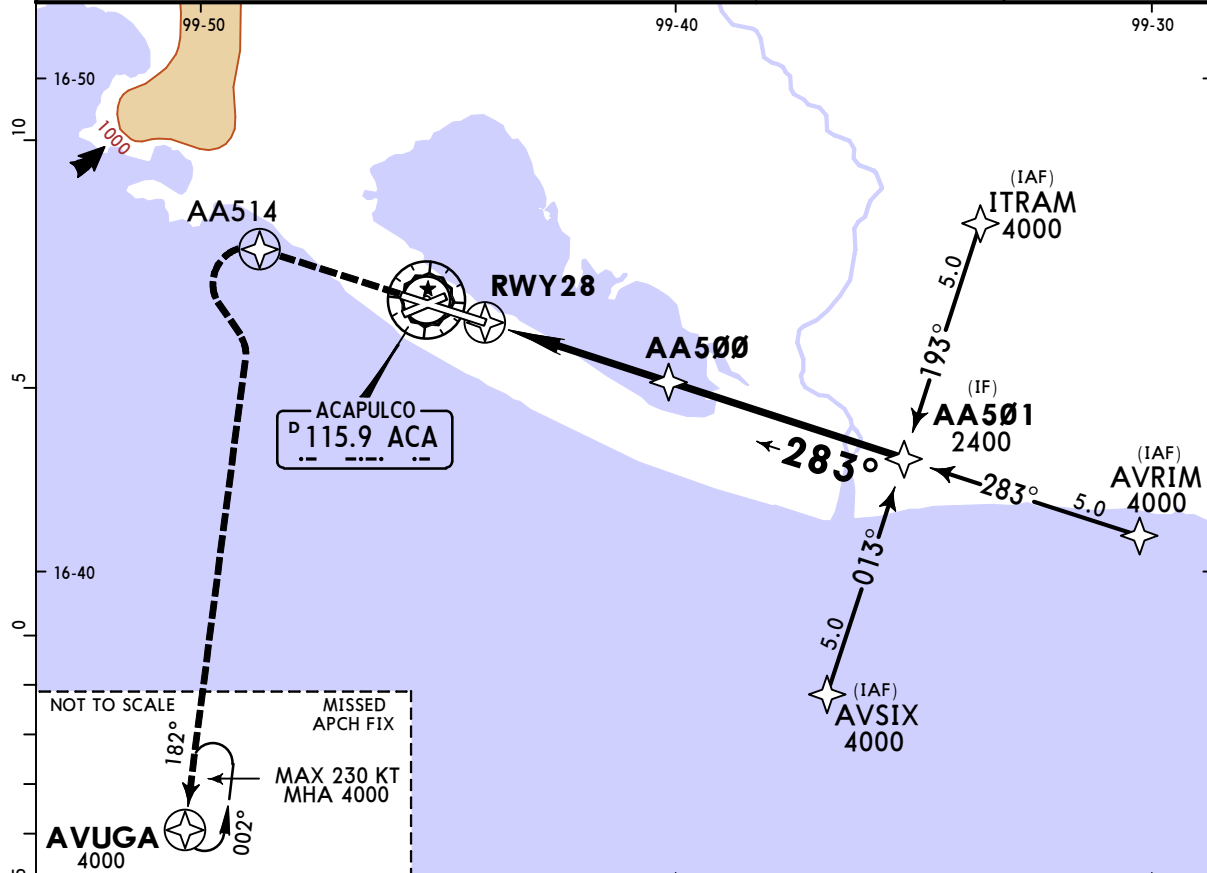
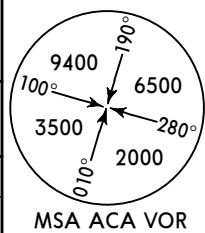
<b>State</b>				<b>STRAIGHT-IN LANDING</b>				<b>CIRCLE-TO-LAND</b>				
<b>RNAV</b>												
MDA(H) <b>620'</b> (608')												
ALS out								Max Kts				
A	V1		V1600m		90		640' (625')		V1		V1600m	
B	V1 3/4		V2800m		120		640' (625')		V1 3/4		V2800m	
C	V2		V3200m		140		640' (625')		V2		V3200m	
D					165		640' (625')					

**MMAA/ACA**  
**GEN JUAN N ALVAREZ INTL**

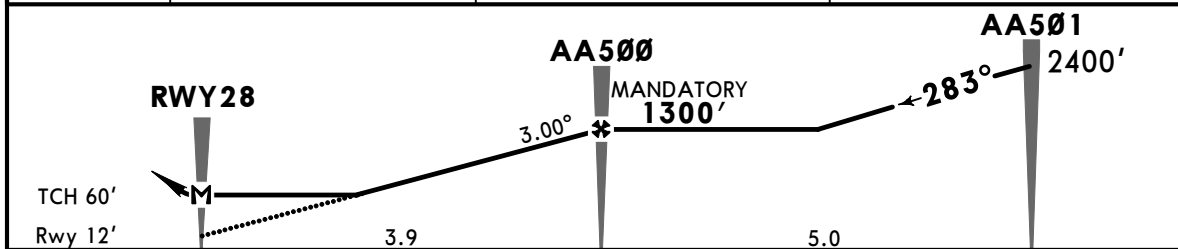
**JEPPESSEN**  
 19 JAN 24 **12-2** Eff 25 Jan

**ACAPULCO, MEXICO**  
**RNP Rwy 28**

*ATIS <b>115.9</b>		ACAPULCO Approach (R) <b>119.9</b>		*ACAPULCO Tower <b>118.5</b> <b>119.9</b>	
RNAV	Final Apch Crs <b>283°</b>	<b>AA500</b> MANDATORY <b>1300'</b> (1288')	LNAV MDA(H) <b>500'</b> (488')	Apt Elev 15'	Rwy 12'
<b>MISSED APCH: Climb on runway track to AA514 and proceed on the missed approach to holding pattern on AVUGA at 4000'.</b>					
RNP APCH	Alt Set: IN (MB on req)	Trans level: FL 195	Trans alt: 18500'		
GNSR required and Operative Radar.					MSA ACA VOR



DIST to THR	2.0	3.0	3.9
ALTITUDE	700'	1020'	1300'



Gnd speed-Kts	70	90	100	120	140	160	ALSF PAPI RWY Track to AA514
Descent Angle	3.00°	372	478	531	637	849	
MAP at RWY28							
FAF to MAP	3.9	3:21	2:36	2:20	1:57	1:40	

	STRAIGHT-IN LANDING		CIRCLE-TO-LAND	
	LNAV		MDA(H)	
	MDA(H) <b>500'</b> (488')		Max Kts	
	ALS out			
A	V1	V1600m	90	580'(565') V1 V1600m
B			120	
C	V1 1/4	V2000m	140	580'(565') V1 1/2 V2400m
D	V1 1/2	V2400m	165	580'(565') V2 V3200m



**MMAA/ACA**  
**GEN JUAN N ALVAREZ INTL**

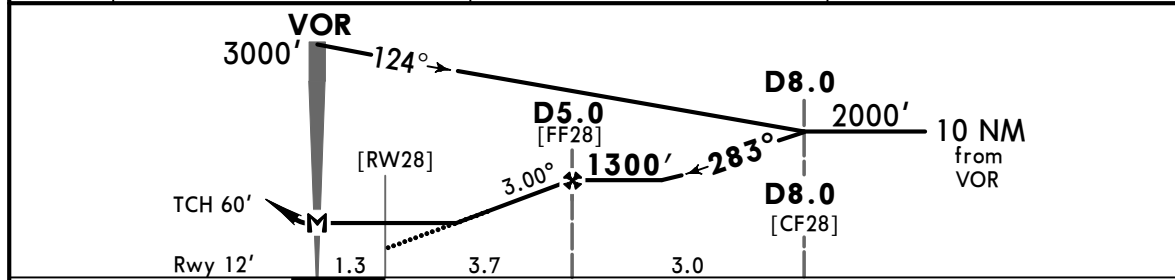
**JEPPESSEN**  
 2 FEB 24 **(13-1)**

**ACAPULCO, MEXICO**  
**VOR Z Rwy 28**

*ATIS <b>115.9</b>		ACAPULCO Approach (R) <b>119.9</b>		*ACAPULCO Tower <b>118.5</b> <b>119.9</b>	
VOR ACA <b>115.9</b>	Final Apch Crs <b>283°</b>	<b>D5.0</b> <b>1300'</b> (1288')	MDA(H) <b>500'</b> (488')	Apt Elev 15' Rwy 12'	
<b>MISSED APCH:</b> Climb outbound via ACA VOR R-273 to D7.0, then turn LEFT within 10 NM to ACA VOR at the minimum holding altitude.					
Alt Set: IN (MB on req)		Trans level: FL195		Trans alt: 18500'	
DME required.					MSA ACA VOR



ACA DME	3.0	4.0	5.0
ALTITUDE	664'	982'	1300'



Gnd speed-Kts	70	90	100	120	140	160	ALSF-I PAPI ↑ via <b>115.9</b> to <b>D7.0</b> <b>R-273</b>
Descent Angle 3.00°	372	478	531	637	743	849	
MAP at VOR	5.0	4:17	3:20	3:00	2:30	2:09	
FAF to MAP	5.0	4:17	3:20	3:00	2:30	2:09	1:53

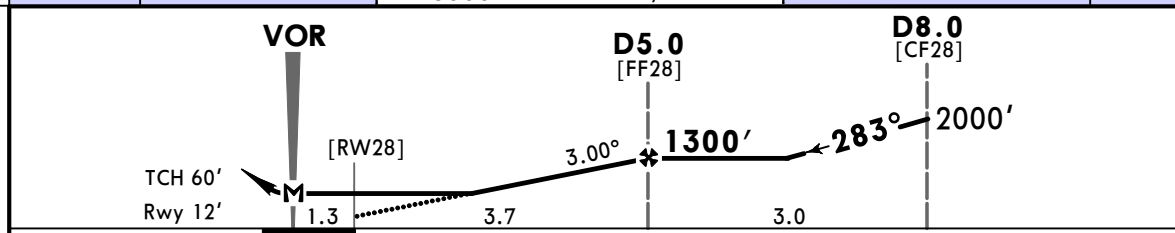
<b>State</b>				<b>STRAIGHT-IN LANDING</b>				<b>CIRCLE-TO-LAND</b>				
				MDA(H) <b>500'</b> (488')								
				ALS out				Max Kts				
A	V1		V1600m		580'		V1		V1600m		90	
B	V1 1/4		V2000m		580'		V1 1/2		V2400m		120	
C	V1 1/2		V2400m		580'		V2		V3200m		140	
D	V1 1/2		V2400m		580'		V2		V3200m		165	

**MMAA/ACA**  
**GEN JUAN N ALVAREZ INTL**

**JEPPESSEN**  
 2 FEB 24 **(13-2)**

**ACAPULCO, MEXICO**  
**VOR Y Rwy 28**

*ATIS <b>115.9</b>		ACAPULCO Approach (R) <b>119.9</b>		*ACAPULCO Tower <b>118.5</b> <b>119.9</b>		
VOR ACA <b>115.9</b>	Final Apch Crs <b>283°</b>	<b>D5.0</b> 1300' (1288')	MDA(H) <b>500' (488')</b>	Apt Elev 15'	Rwy 12'	
<b>MISSED APCH:</b> Climb outbound via ACA VOR R-273 to D7.0, then turn LEFT within 10 NM to ACA VOR at the minimum holding altitude.						
Alt Set: IN (MB on req)		Trans level: FL195		Trans alt: 18500'		
1. DME required. 2. In case of ACA DME failure at any point during this procedure, maintain last altitude and proceed to the station according to instructions from ATC.						



Gnd speed-Kts	70	90	100	120	140	160	ALSF-I PAPI ↑ via <b>115.9</b> to <b>D7.0</b> <b>R-273</b>
Descent Angle 3.00°	372	478	531	637	743	849	
MAP at VOR							
FAF to MAP	5.0	4:17	3:20	3:00	2:30	2:09	1:53

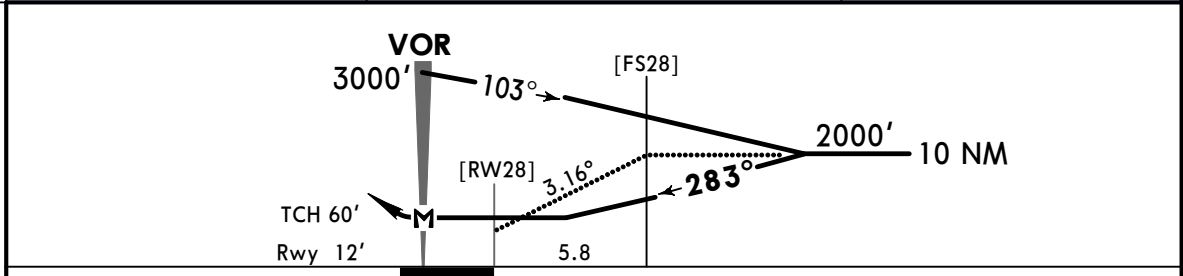
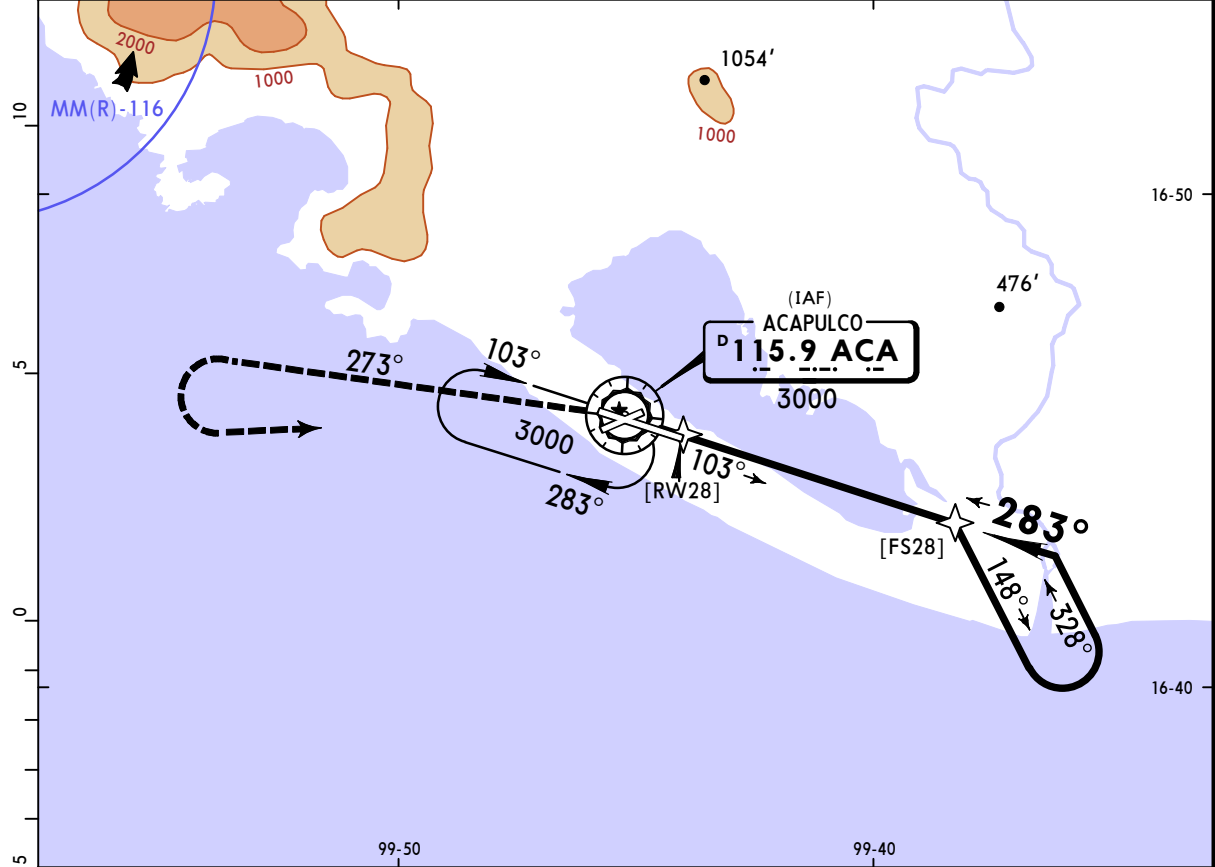
	STRAIGHT-IN LANDING		CIRCLE-TO-LAND	
	MDA(H) <b>500' (488')</b>	ALS out	Max Kts	MDA(H)
A	V1	V1600m	90	580' (565')
B	V1 1/4	V2000m	120	580' (565')
C	V1 1/2	V2400m	140	580' (565')
D	V2	V3200m	165	580' (565')

**MMAA/ACA**  
**GEN JUAN N ALVAREZ INTL**

**JEPPesen**  
 2 FEB 24 **(13-3)**

**ACAPULCO, MEXICO**  
**VOR X Rwy 28**

*ATIS <b>115.9</b>		ACAPULCO Approach (R) <b>119.9</b>			*ACAPULCO Tower <b>118.5</b>		<b>119.9</b>																							
VOR ACA <b>115.9</b>	Final Apch Crs <b>283°</b>	No FAF	MDA(H) <b>540'</b> (528')		Apt Elev 15' Rwy 12'																									
<b>MISSED APCH: Climb via ACA VOR R-273, turn LEFT within 10 NM to ACA VOR at the minimum holding altitude.</b>																														
<table border="1"> <thead> <tr> <th colspan="8">MAX TIME TO TURN</th> </tr> <tr> <th>Gnd speed-Kts</th> <th>80</th> <th>100</th> <th>120</th> <th>140</th> <th>160</th> <th>180</th> <th>200</th> </tr> </thead> <tbody> <tr> <td>7 NM to turn</td> <td>5:15</td> <td>4:12</td> <td>3:30</td> <td>3:00</td> <td>2:38</td> <td>2:20</td> <td>2:06</td> </tr> </tbody> </table>								MAX TIME TO TURN								Gnd speed-Kts	80	100	120	140	160	180	200	7 NM to turn	5:15	4:12	3:30	3:00	2:38	2:20
MAX TIME TO TURN																														
Gnd speed-Kts	80	100	120	140	160	180	200																							
7 NM to turn	5:15	4:12	3:30	3:00	2:38	2:20	2:06																							
Alt Set: IN (MB on req)		Trans level: FL195			Trans alt: 18500'																									



Gnd speed-Kts	70	90	100	120	140	160		ACA via <b>115.9</b> <b>R-273</b>
Descent Angle	3.16°	391	503	559	671	783		

<b>State</b>		STRAIGHT-IN LANDING		CIRCLE-TO-LAND			
		MDA(H) <b>540'</b> (528')					
		ALS out		Max Kts	MDA(H)		
A		V1	V1600m	90	580'(565')	V1	V1600m
B				120			
C		V1 1/2	V2400m	140	580'(565')	V1 1/2	V2400m
D		V1 3/4	V2800m	165	580'(565')	V2	V3200m

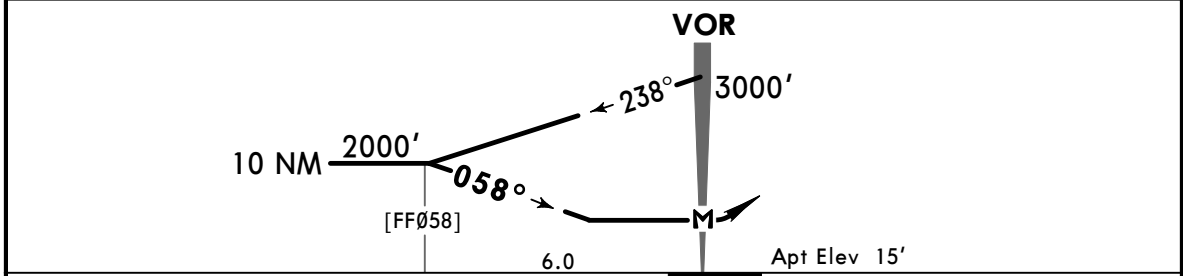
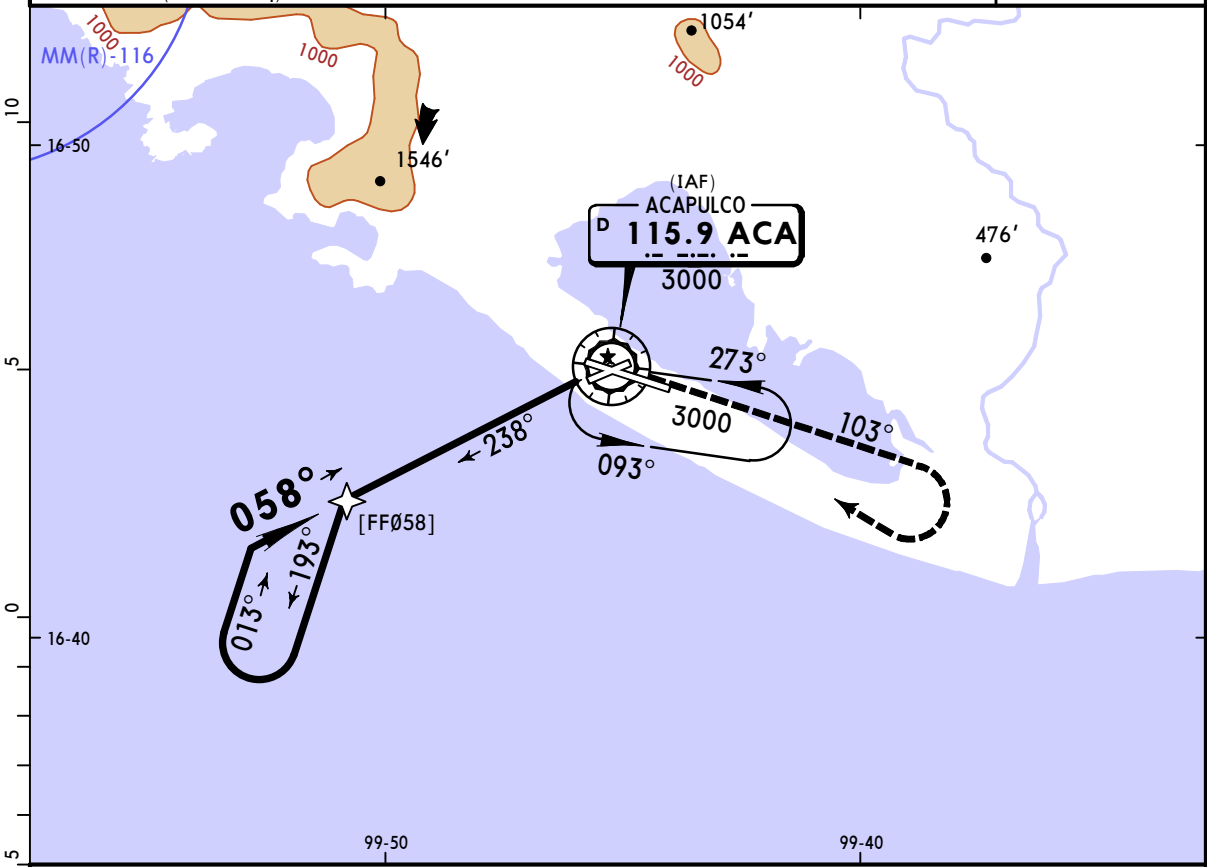
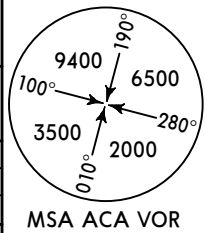
CHANGES: Minimums.

**MMAA/ACA**  
**GEN JUAN N ALVAREZ INTL**

**JEPPESEN**  
 2 FEB 24 **(13-4)**

**ACAPULCO, MEXICO**  
**VOR-A**

*ATIS <b>115.9</b>		ACAPULCO Approach (R) <b>119.9</b>		*ACAPULCO Tower <b>118.5</b> <b>119.9</b>			
VOR ACA <b>115.9</b>	Final Apch Crs <b>058°</b>	No FAF	MDA(H) Refer to Minimums	Apt Elev 15'			
<b>MISSED APCH: Climb via ACA VOR R-103, turn RIGHT within 10 NM to ACA VOR at the minimum holding altitude.</b>							
MAX TIME TO TURN							
Gnd speed-Kts	80	100	120	140	160	180	200
7 NM to turn	5:15	4:12	3:30	3:00	2:38	2:20	2:06
Alt Set: IN (MB on req)		Trans level: FL195		Trans alt: 18500'			



MAP at VOR	Lighting - Refer to Airport Chart	↑ via <b>115.9</b> <b>R-103</b>
------------	-----------------------------------	------------------------------------

<b>State</b>		CIRCLE-TO-LAND	
	Max Kts	MDA(H)	
A	90	580'(565')	V1 V1600m
B	120	580'(565')	V1 1/2 V2400m
C	140	580'(565')	V2 V3200m
D	165	580'(565')	

CHANGES: None.