

General Information

Location: PIEDRAS NEGRAS MEX
ICAO/IATA: MMPG / PDS
Lat/Long: N28° 37.6', W100° 32.1'
Elevation: 901 ft

Airport Use: Public
Daylight Savings: Observed
UTC Conversion: +6:00 = UTC
Magnetic Variation: 5.0° E
Sectional Chart: San Antonio

Fuel Types: 100-130 Octane, Jet A-1
Customs: Yes
Airport Type: IFR
Landing Fee: No
Control Tower: No
Jet Start Unit: No
LLWS Alert: No
Beacon: Yes

Sunrise: 1249 Z
Sunset: 0003 Z

Runway Information

Runway: 12
Length x Width: 6726 ft x 105 ft
Surface Type: asphalt
TDZ-Elev: 893 ft
Lighting: Edge
Displaced Threshold: 328 ft

Runway: 30
Length x Width: 6726 ft x 105 ft
Surface Type: asphalt
TDZ-Elev: 899 ft
Lighting: Edge

Communication Information

Piedras Negras Information: 122.250 AFIS

MMPG/PDS
PIEDRAS NEGRAS INTL

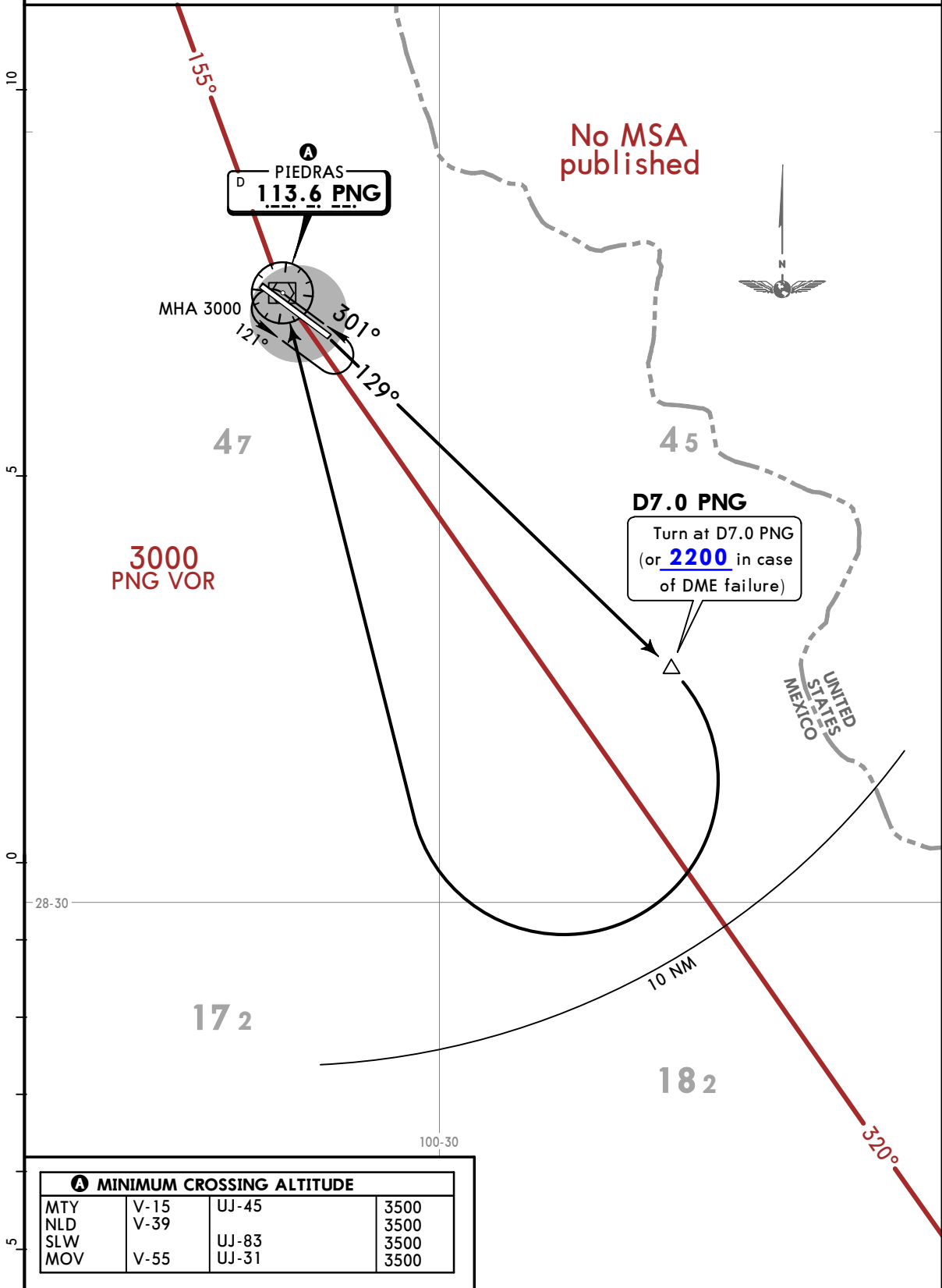
27 DEC 19 **10-3** Eff 2 Jan

JEPPESSEN PIEDRAS NEGRAS, MEXICO

SID

| | |
|-----------------|------------------|
| Apt Elev 901 | Trans alt: 18500 |
|-----------------|------------------|

PIEDRAS 4A DEPARTURE (PNG4A)
(RWY 12)



INITIAL CLIMB

Climb via PNG R129 to D7.0 PNG (or 2200 in case of DME failure) then turn RIGHT within 10 NM to PNG VOR and cross it according to the A MCA or ATC instructions.

MMPG/PDS
PIEDRAS NEGRAS INTL

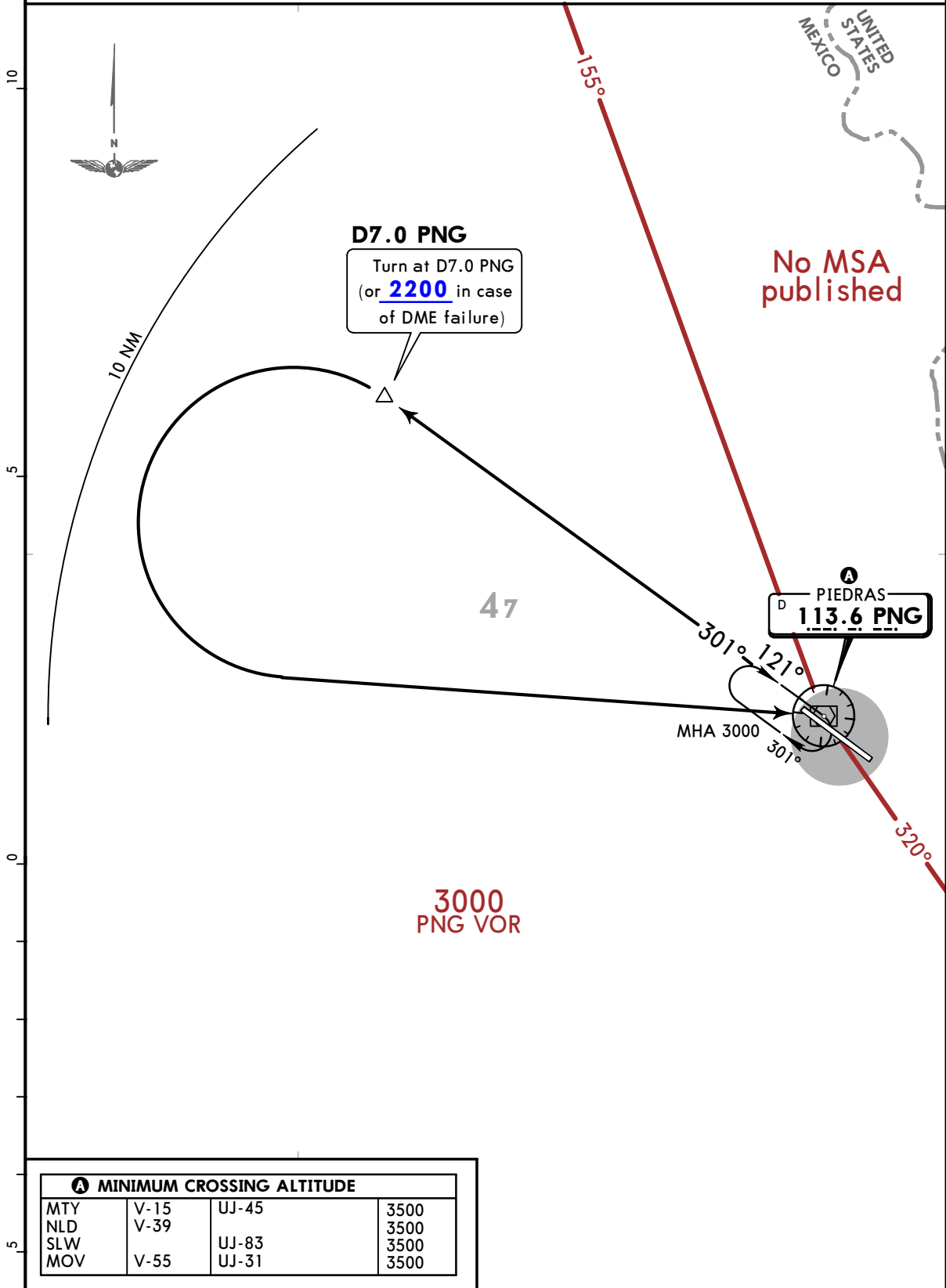
27 DEC 19 **10-3A** Eff 2 Jan

JEPPESEN PIEDRAS NEGRAS, MEXICO

SID

| | |
|------------------------|------------------|
| Apt Elev 901 | Trans alt: 18500 |
|------------------------|------------------|

**PIEDRAS 4B DEPARTURE (PNG4B)
(RWY 30)**



| A MINIMUM CROSSING ALTITUDE | | | |
|------------------------------------|------|-------|------|
| MTY | V-15 | UJ-45 | 3500 |
| NLD | V-39 | | 3500 |
| SLW | | UJ-83 | 3500 |
| MOV | V-55 | UJ-31 | 3500 |

INITIAL CLIMB

Climb via PNG R301 to D7.0 PNG (or 2200 in case of DME failure) then turn LEFT within 10 NM to PNG VOR and cross it according to the **A** MCA or ATC instructions.

MMPG/PDS

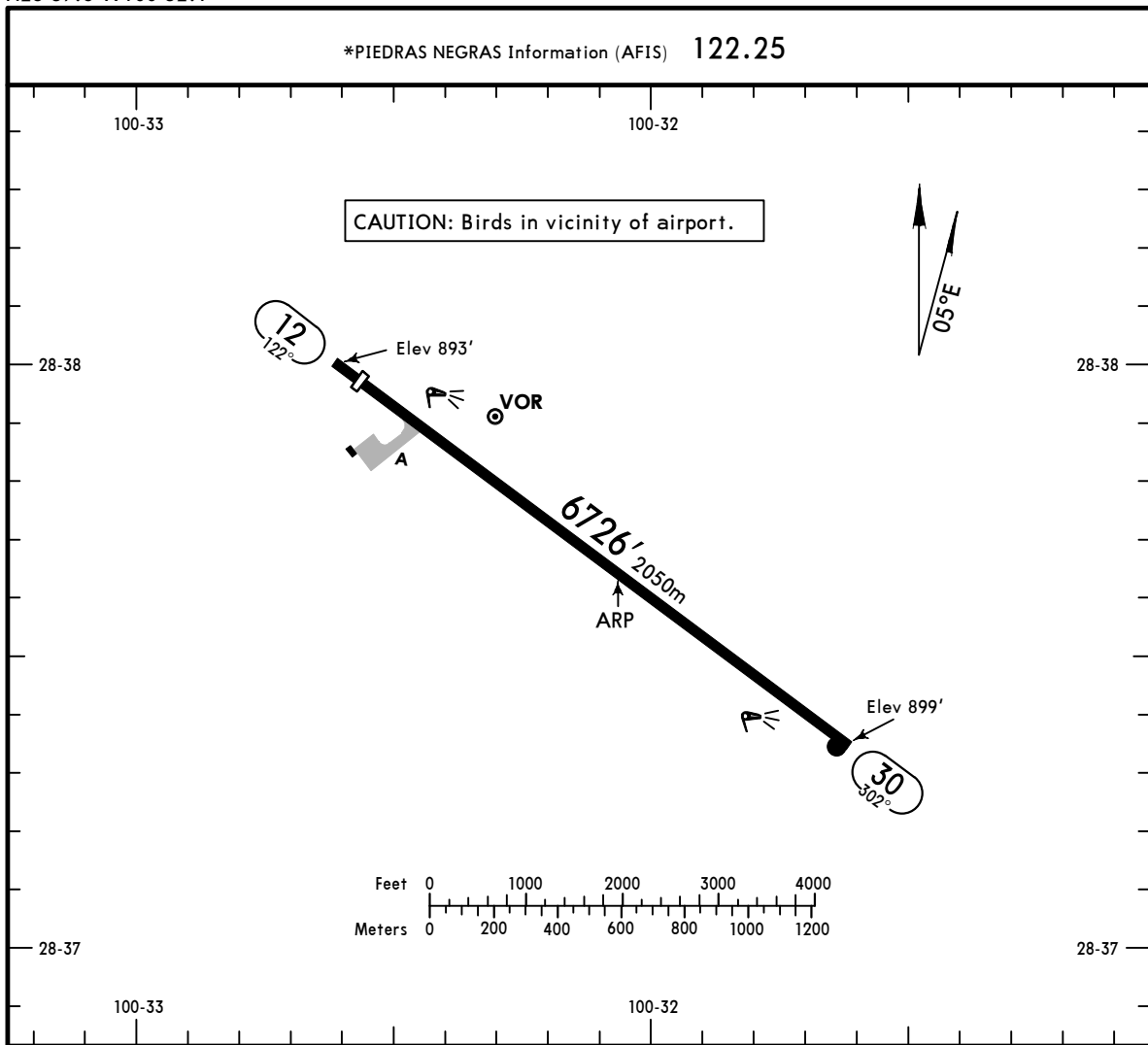
Apt Elev **901'**
N28 37.6 W100 32.1



JEPPESSEN PIEDRAS NEGRAS, MEXICO

27 DEC 19 **(10-9) Eff 2 Jan**

PIEDRAS NEGRAS INTL



| ADDITIONAL RUNWAY INFORMATION | | | | | |
|-------------------------------|------|----------------------|----------------|-------------|-------------|
| RWY | | | USABLE LENGTHS | | WIDTH |
| | | | LANDING BEYOND | | |
| | | | Threshold | Glide Slope | TAKE-OFF |
| 12 | HIRL | PAPI-L (angle 3.0°) | 6398' | 1950m | |
| 30 | HIRL | APAPI-L (angle 3.0°) | | | 105' 32m |
| | | | | | |
| | | | | | |
| | | | | | |

| TAKE-OFF | |
|-----------------|---------|
| All Rwys | |
| 1 & 2 Eng | 500-1 |
| 3 & 4 Eng | 500-1/2 |

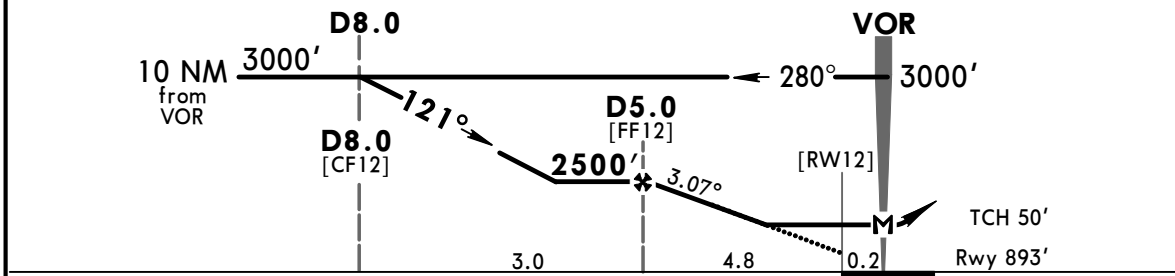
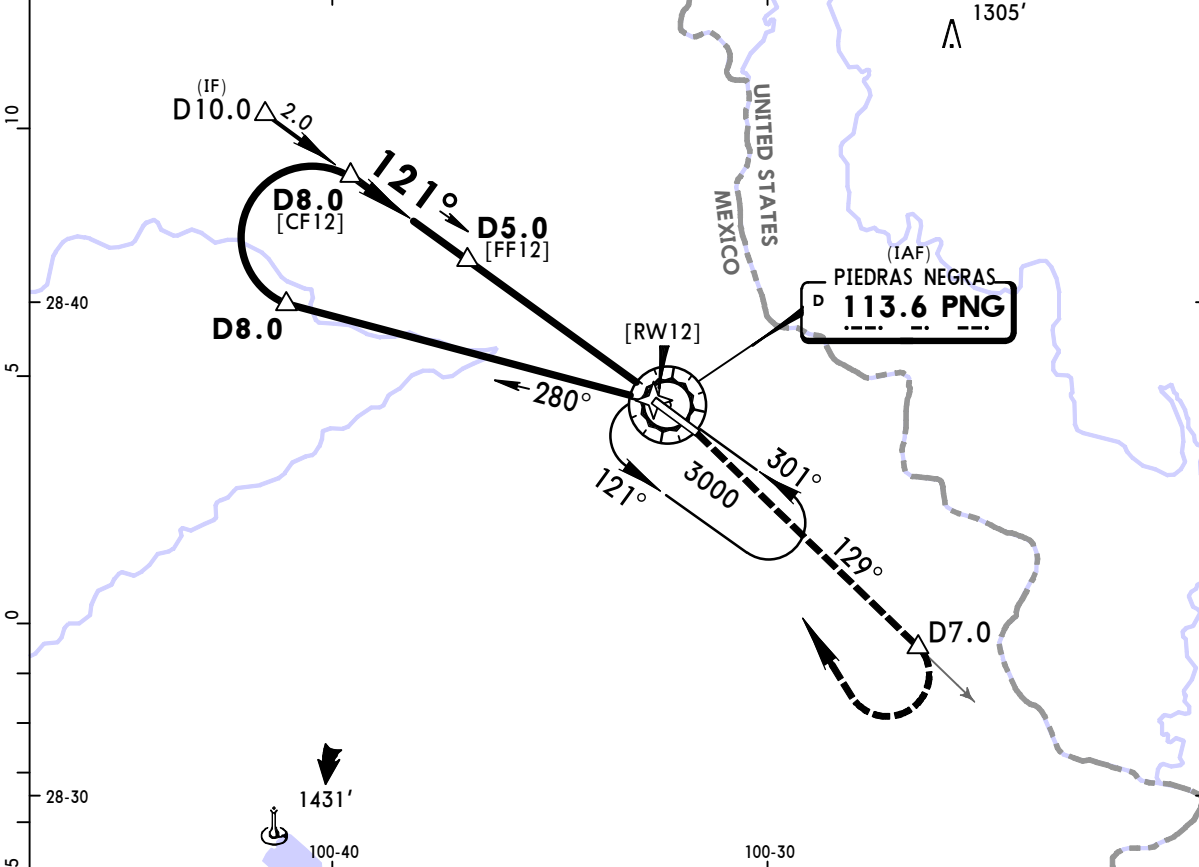
For departure procedure and MCAs see 10-3 and 10-3A.

MMPG/PDS
PIEDRAS NEGRAS INTL

JEPPESEN
 27 DEC 19
 Eff 2 Jan (13-1)

PIEDRAS NEGRAS, MEXICO
VOR DMÉ Rwy 12

| | | | | |
|---|----------------------------------|------------------------------|-------------------------------|---------------------------|
| *PIEDRAS NEGRAS Information (AFIS) 122.25 | | | | |
| VOR PNG 113.6 | Final Apch Crs 121° | D5.0 2500' (1607') | MDA(H) 1340' (447') | Apt Elev 901' Rwy 893' |
| MISSED APCH: Climb outbound on PNG VOR R-129 to D7.0, then turn RIGHT within 10 NM to PNG VOR at the minimum holding altitude. | | | | |
| Alt Set: MB (IN on req) | | Rwy Elev: 32 MB | Trans level: FL 195 | Trans alt: 18500' |
| | | | | MSA PNG VOR |



| | | | | | | | | | |
|---------------------|-----|-----|-----|-----|-----|-----|--|--|--|
| Gnd speed-Kts | 70 | 90 | 100 | 120 | 140 | 160 | | | |
| Descent Angle 3.07° | 380 | 489 | 543 | 652 | 760 | 869 | | | |
| MAP at VOR | | | | | | | | | |

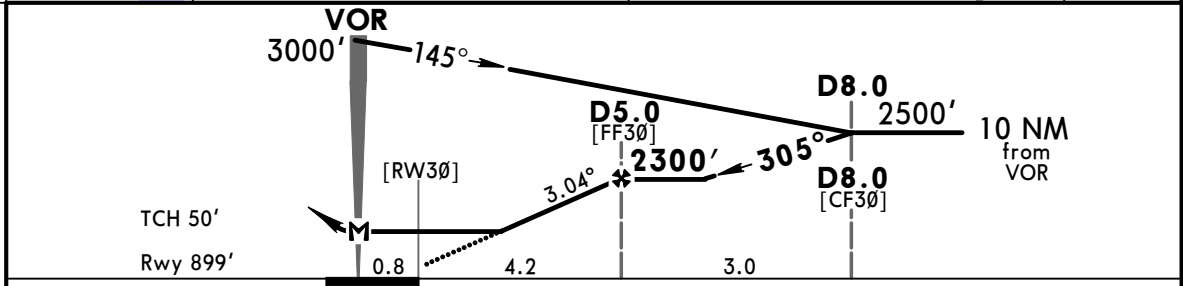
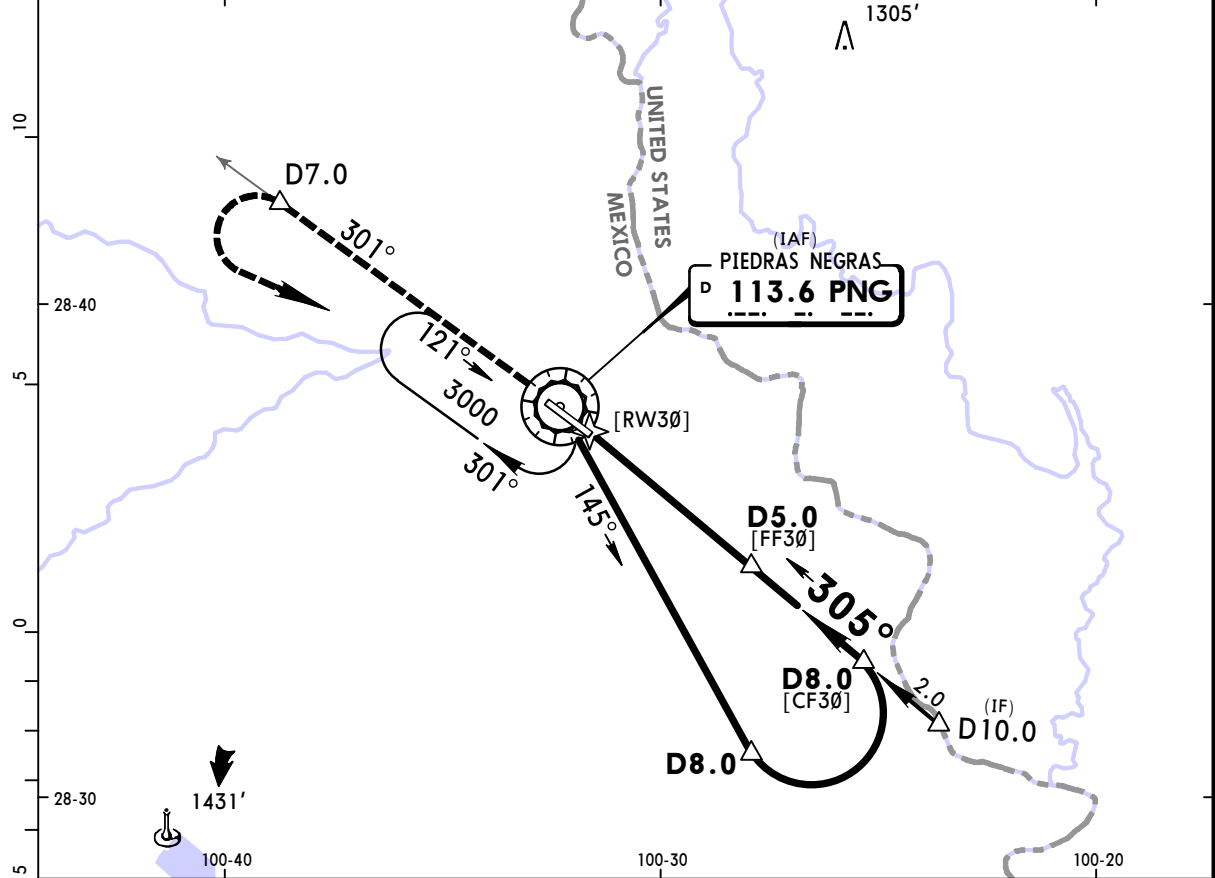
| | | | | | | | | |
|----------------------------|----------------|--|--|----------------|----------------------|--|--|--|
| STRAIGHT-IN LANDING RWY 12 | | | | CIRCLE-TO-LAND | | | | |
| MDA(H) 1340' (447') | | | | | | | | |
| | | | | Max Kts | MDA(H) | | | |
| A | 1 | | | 90 | 1400' (499') - 1 | | | |
| B | 1 | | | 120 | 1400' (499') - 1 | | | |
| C | 1 1/4 | | | 140 | 1400' (499') - 1 1/2 | | | |
| D | NOT APPLICABLE | | | D | NOT APPLICABLE | | | |

CHANGES: Procedure.

MMPG/PDS
PIEDRAS NEGRAS INTL
JEPPESEN PIEDRAS NEGRAS, MEXICO
VOR DMÉ Rwy 30

27 DEC 19
 Eff 2 Jan (13-2) CAT A, B & C

| | | | | |
|--|----------------------------------|------------------------------|-------------------------------|---------------------------|
| *PIEDRAS NEGRAS Information (AFIS) 122.25 | | | | |
| VOR PNG 113.6 | Final Apch Crs 305° | D5.0 2300' (1401') | MDA(H) 1340' (441') | Apt Elev 901' Rwy 899' |
| MISSED APCH: Climb outbound on PNG VOR R-301 to D7.0, then turn LEFT within 10 NM to PNG VOR at the minimum holding altitude. | | | | |
| Alt Set: MB (IN on req) | | Rwy Elev: 32 MB | Trans level: FL 195 | Trans alt: 18500' |
| | | | | MSA PNG VOR |

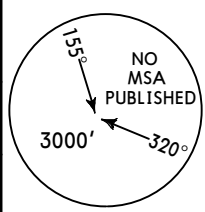


| | | | | | | | | | | |
|---------------|-------|-----|-----|-----|-----|-----|--|--|--|--|
| Gnd speed-Kts | 70 | 90 | 100 | 120 | 140 | 160 | | | | |
| Descent Angle | 3.04° | 376 | 484 | 538 | 645 | 861 | | | | |
| MAP at VOR | | | | | | | | | | |

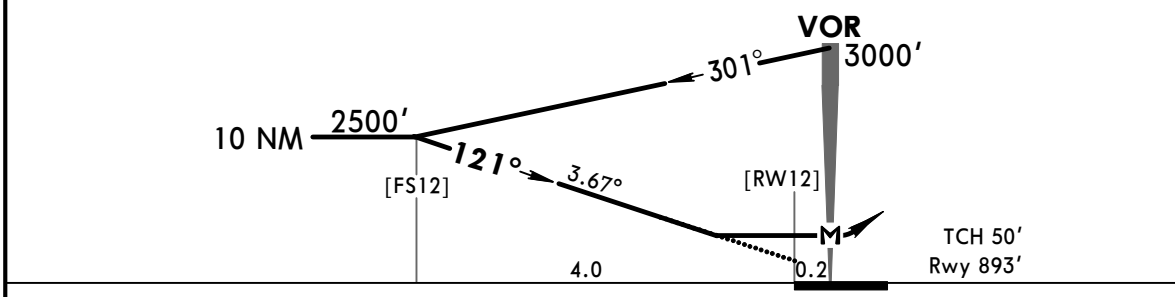
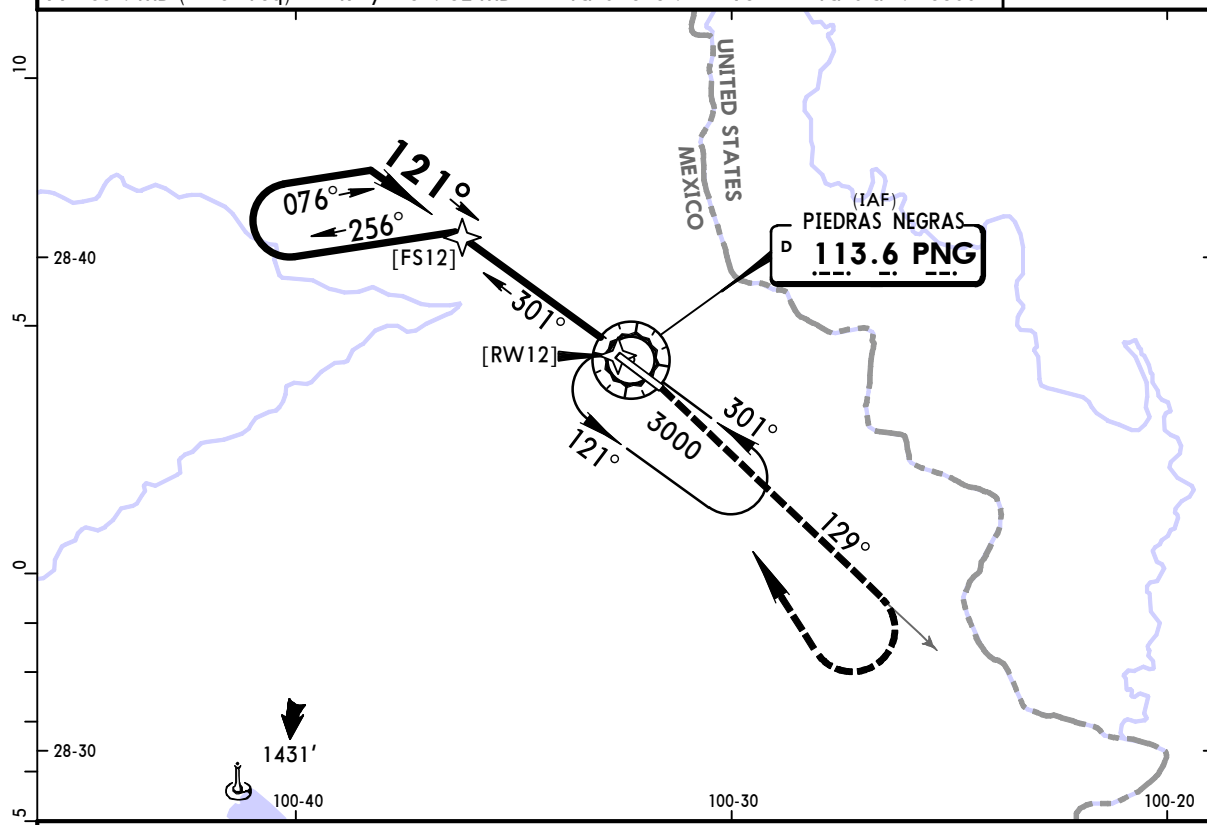
| | | | | | | | |
|----------------------------|----------------|--|--|----------------|----------------------|--|--|
| STRAIGHT-IN LANDING RWY 30 | | | | CIRCLE-TO-LAND | | | |
| MDA(H) 1340' (441') | | | | MDA(H) _____ | | | |
| A | 1 | | | Max Kts | 90 | | |
| B | 1 1/4 | | | | 1400' (499') - 1 | | |
| C | NOT APPLICABLE | | | | 1400' (499') - 1 1/2 | | |
| D | NOT APPLICABLE | | | D | NOT APPLICABLE | | |

MMPG/PDS **PIEDRAS NEGRAS INTL** 27 DEC 19 **(13-3)** **Eff 2 Jan** **CAT A, B & C** **PIEDRAS NEGRAS, MEXICO** **VOR Rwy 12**

| | | | | | | | |
|--|----------------------------------|-----------------|-------------------------------|---------------------------|------|-------------------|------|
| *PIEDRAS NEGRAS Information (AFIS) 122.25 | | | | | | | |
| VOR PNG 113.6 | Final Apch Crs 121° | No FAF | MDA(H) 1400' (507') | Apt Elev 901' Rwy 893' | | | |
| MISSED APCH: Climb outbound on PNG VOR R-129 then turn RIGHT within 10 NM to PNG VOR at the minimum holding altitude. | | | | | | | |
| MAX TIME TO TURN | | | | | | | |
| Gnd speed-Kts | 80 | 100 | 120 | 140 | 160 | 180 | 200 |
| MAP to turn 7 NM | 5:15 | 4:12 | 3:30 | 2:54 | 2:38 | 2:19 | 2:06 |
| Alt Set: MB (IN on req) | | Rwy Elev: 32 MB | | Trans level: FL 195 | | Trans alt: 18500' | |



MSA PNG VOR



| | | | | | | | | |
|---------------|-------|-----|-----|-----|-----|-----|--------|-----------------------------------|
| Gnd speed-Kts | 70 | 90 | 100 | 120 | 140 | 160 | PAPI-L | ↑ on 113.6 R-129 |
| Descent Angle | 3.67° | 455 | 585 | 650 | 779 | 909 | | |
| MAP at VOR | | | | | | | | |

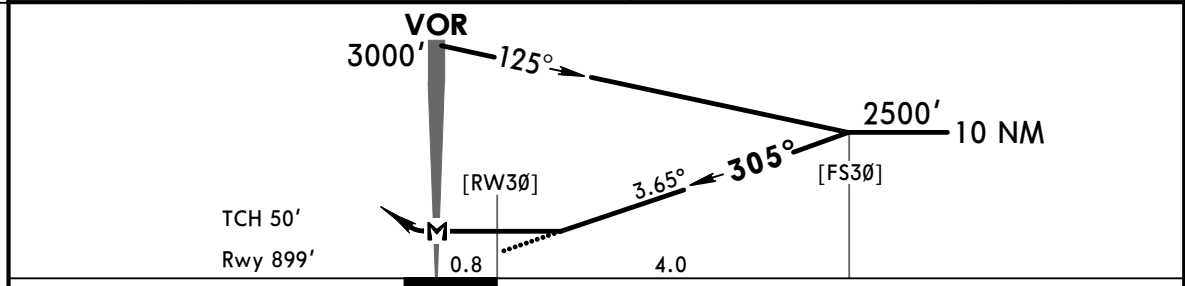
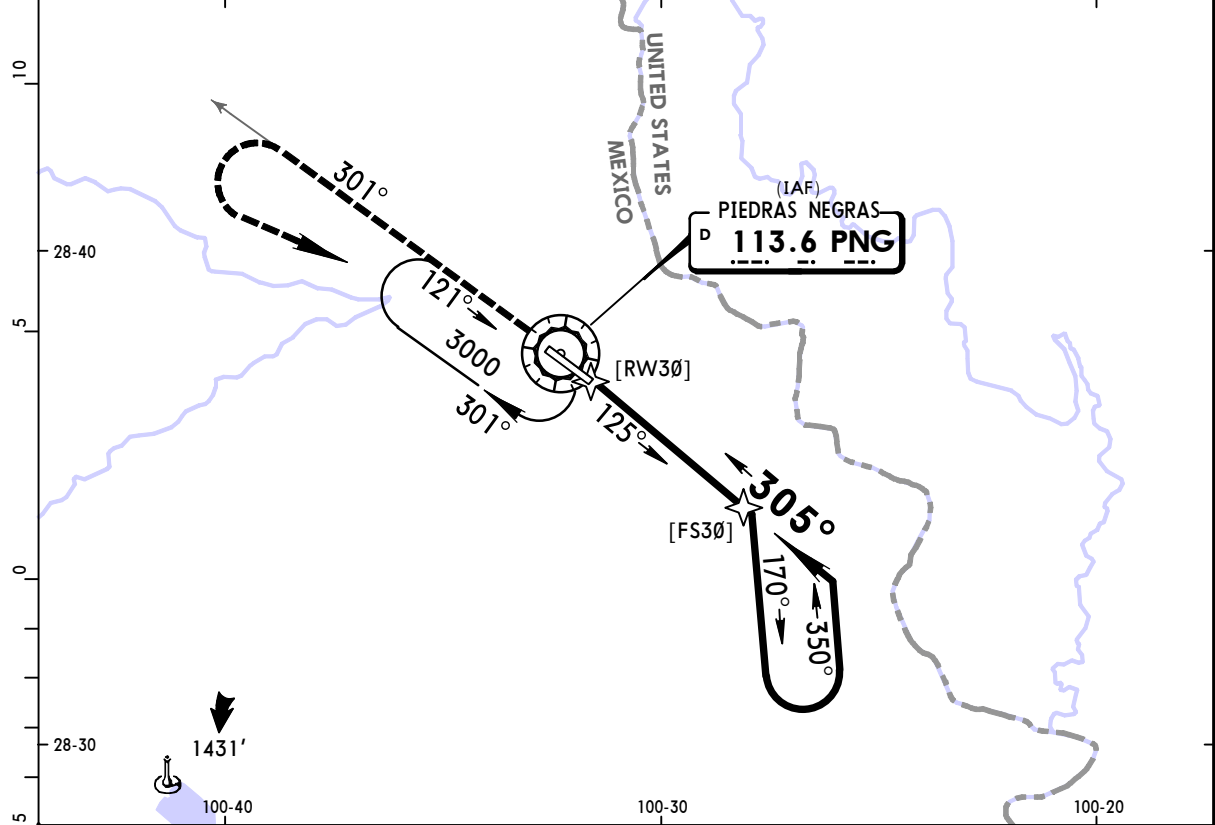
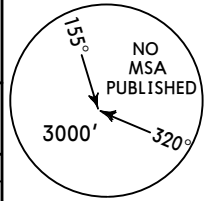
| | | | | | | | |
|----------------------------|----------------|--|--|----------------|-----------------------------|--|--|
| STRAIGHT-IN LANDING RWY 12 | | | | CIRCLE-TO-LAND | | | |
| MDA(H) 1400' (507') | | | | MDA(H) | | | |
| A | 1 | | | Max Kts | 90 | | |
| B | 1 | | | 120 | 1400' (499') - 1 | | |
| C | 1 1/2 | | | 140 | 1400' (499') - 1 1/2 | | |
| D | NOT APPLICABLE | | | D | NOT APPLICABLE | | |

CHANGES: Procedure.

MMPG/PDS
PIEDRAS NEGRAS INTL

JEPPesen **PIEDRAS NEGRAS, MEXICO**
 27 DEC 19 (13-4) Eff 2 Jan CAT A, B & C **VOR Rwy 30**

| | | | | | | | | | | | | | | | | | | | | |
|---|--|----------------------------------|---------------------|-------------------------------|---------------------------|---------------|------|-----|-----|-----|-----|-----|-----|------------------|------|------|------|------|------|------|
| *PIEDRAS NEGRAS Information (AFIS) 122.25 | | | | | | | | | | | | | | | | | | | | |
| BRIEFING STRIP™ | VOR PNG 113.6 | Final Apch Crs 305° | No FAF | MDA(H) 1340' (441') | Apt Elev 901' Rwy 899' | | | | | | | | | | | | | | | |
| | MISSED APCH: Climb outbound on PNG VOR R-301 then turn LEFT within 10 NM to PNG VOR at the minimum holding altitude. | | | | | | | | | | | | | | | | | | | |
| | MAX TIME TO TURN <table border="1"> <tr> <td>Gnd speed-Kts</td> <td>80</td> <td>100</td> <td>120</td> <td>140</td> <td>160</td> <td>180</td> <td>200</td> </tr> <tr> <td>MAP to turn 7 NM</td> <td>5:15</td> <td>4:12</td> <td>3:30</td> <td>2:54</td> <td>2:38</td> <td>2:19</td> <td>2:06</td> </tr> </table> | | | | | Gnd speed-Kts | 80 | 100 | 120 | 140 | 160 | 180 | 200 | MAP to turn 7 NM | 5:15 | 4:12 | 3:30 | 2:54 | 2:38 | 2:19 |
| Gnd speed-Kts | 80 | 100 | 120 | 140 | 160 | 180 | 200 | | | | | | | | | | | | | |
| MAP to turn 7 NM | 5:15 | 4:12 | 3:30 | 2:54 | 2:38 | 2:19 | 2:06 | | | | | | | | | | | | | |
| Alt Set: MB (IN on req) | | Rwy Elev: 32 MB | Trans level: FL 195 | Trans alt: 18500' | | | | | | | | | | | | | | | | |



| | | | | | | | | |
|---------------------|-----|-----|-----|-----|-----|------|--------|-----------------------------------|
| Gnd speed-Kts | 70 | 90 | 100 | 120 | 140 | 160 | PAPI-L | ↑ on 113.6 R-301 |
| Descent Angle 3.65° | 452 | 581 | 646 | 775 | 904 | 1034 | | |
| MAP at VOR | | | | | | | | |

| | | | | | |
|----------------------------|----------------|--|----------------|-----------------------------|--|
| STRAIGHT-IN LANDING RWY 30 | | | CIRCLE-TO-LAND | | |
| MDA(H) 1340' (441') | | | MDA(H) _____ | | |
| A | 1 | | Max Kts | _____ | |
| B | 1 | | 90 | 1400' (499') - 1 | |
| C | 1 1/4 | | 120 | 1400' (499') - 1 1/2 | |
| D | NOT APPLICABLE | | 140 | NOT APPLICABLE | |
| | NOT APPLICABLE | | D | NOT APPLICABLE | |

CHANGES: Procedure.