

General Information

Location: TUXTLA GUTIERREZ MEX
ICAO/IATA: MMTG / TGZ
Lat/Long: N16° 33.7', W093° 01.6'
Elevation: 1508 ft

Airport Use: Public
Daylight Savings: Not Observed
UTC Conversion: +6:00 = UTC
Magnetic Variation: 2.0° E

Fuel Types: 100 Octane (LL), Jet A
Customs: No
Airport Type: IFR
Landing Fee: No
Control Tower: Yes
Jet Start Unit: No
LLWS Alert: No
Beacon: Yes

Sunrise: 1156 Z
Sunset: 0038 Z

Runway Information

Runway: 15
Length x Width: 8202 ft x 148 ft
Surface Type: concrete
TDZ-Elev: 1503 ft
Lighting: Edge

Runway: 33
Length x Width: 8202 ft x 148 ft
Surface Type: concrete
TDZ-Elev: 1508 ft
Lighting: Edge

Communication Information

Tuxtla Tower: 118.600
Tuxtla Approach: 118.600
Merida Control ACC: 128.300 RCO

TMA



19 JUL 24

10-1B

TUXTLA GUTIERREZ, MEXICO

ANGEL ALBINO CORZO

*TUXTLA Approach
118.6

SPEED RESTRICTIONS WITHIN MEXICO AIRSPACE

MAXIMUM IAS UNLESS OTHERWISE DEPICTED OR AUTHORIZED BY ATC

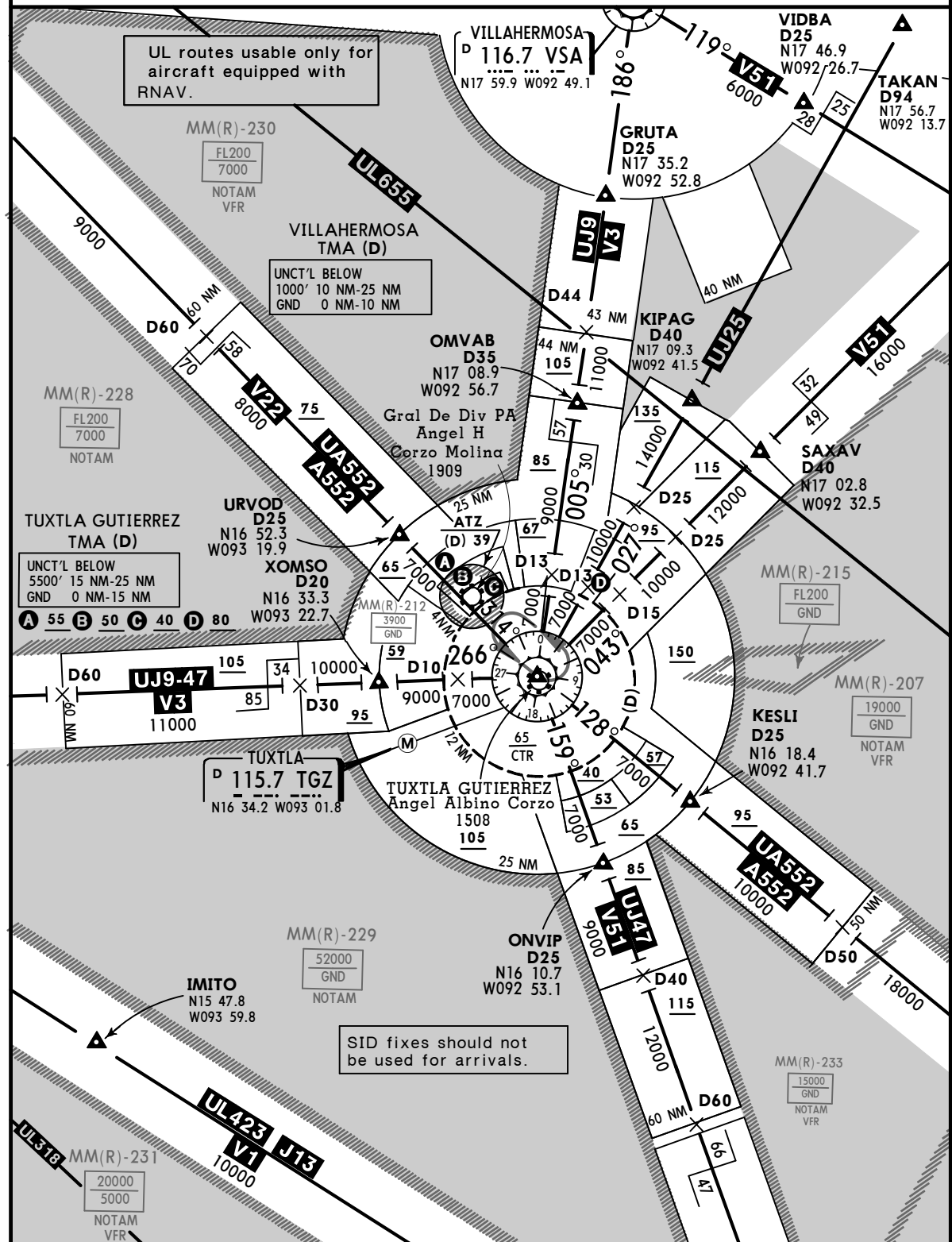
- Below 3000' AGL within 10 NM of any airport.....200 KTS
- Below 10000' MSL within Mexico Airspace.....250 KTS
- Below 10000' AGL within 30 NM of any airport.....250 KTS

WITHIN TUXTLA GUTIERREZ TMA

- At or below 4500' MSL within 10 NM of TGZ VORDME.....200 KTS
- At or below 11500' MSL within 30 NM of TGZ VORDME.....250 KTS

WITHIN VILLAHERMOSA TMA

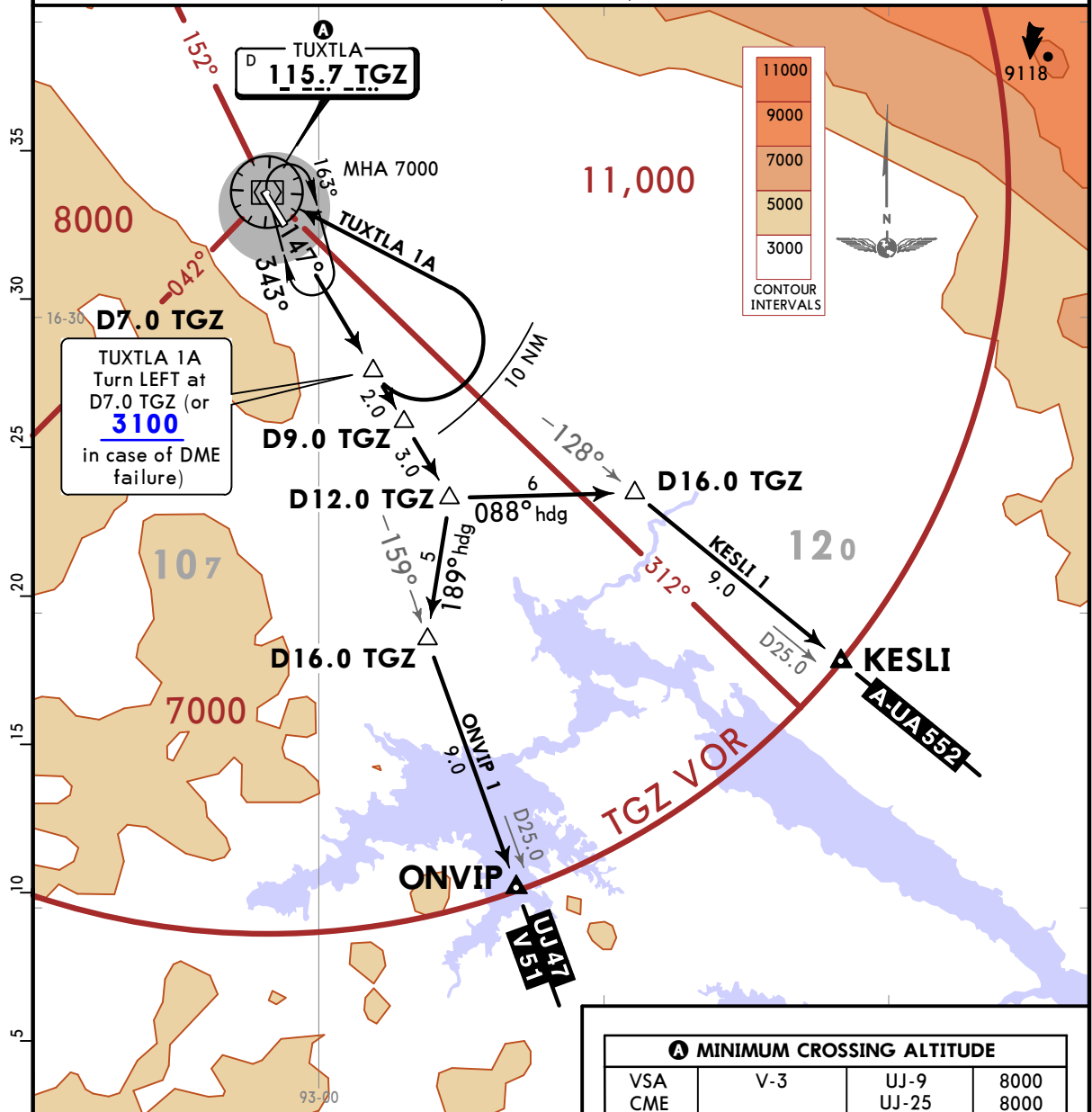
- At or below 3000' MSL within 10 NM of VSA VORDME.....200 KTS
- At or below 10000' MSL within 30 NM of VSA VORDME.....250 KTS



MMTG/TGZ
ANGEL ALBINO CORZO 23 DEC 22 **10-3** **Eff 29 Dec** **SID**

Apt Elev 1508	Trans alt: 18500
------------------	------------------

KESLI 1 (KESLI1)
ONVIP 1 (ONVIP1)
TUXTLA 1A (TGZ1A)
DEPARTURES
(RWY 15)



TUXTLA 1A
 Turn LEFT at
 D7.0 TGZ (or
3100
 in case of DME
 failure)

A MINIMUM CROSSING ALTITUDE			
VSA	V-3	UJ-9	8000
CME		UJ-25	8000
PQE	V-51		8000
GABEN	A-552	UA-552	7000
TAP	V-51	UJ-47	7000
IZT	V-3	UJ-9-47	7000
MTT	V-22, A-552	UA-552	7000

These SIDs require a minimum climb gradient of:
 280 FT/NM (4.6%) to 7000.

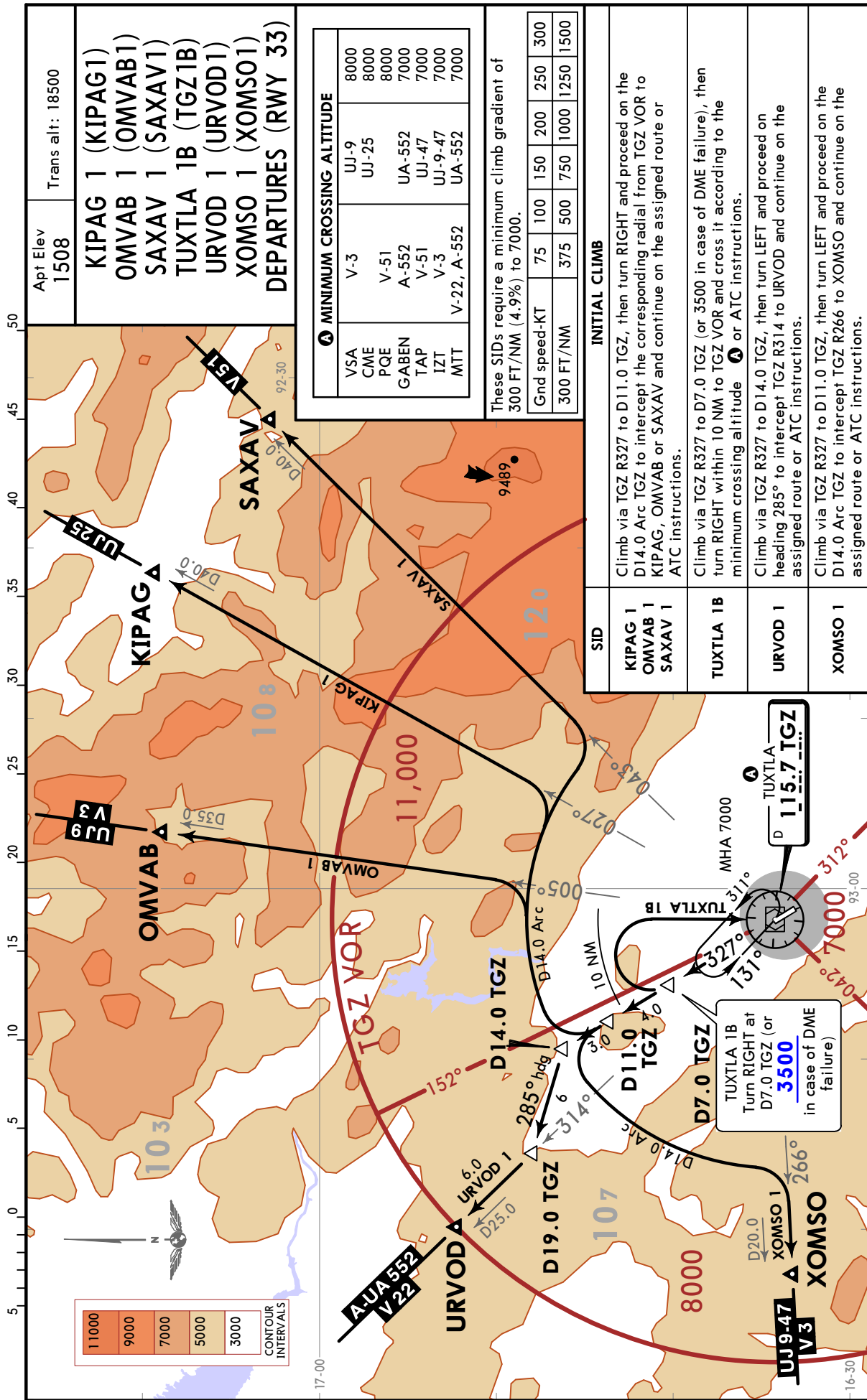
Gnd speed-KT	75	100	150	200	250	300
280 FT/NM	350	467	700	933	1167	1400

SID	INITIAL CLIMB
KESLI 1	Climb via TGZ R147 to D12.0 TGZ, then turn LEFT and proceed on heading 088° to intercept TGZ R128 to KESLI and continue on the assigned route or ATC instructions.
ONVIP 1	Climb via TGZ R147 to D12.0 TGZ, then turn RIGHT and proceed on heading 189° to intercept TGZ R159 to ONVIP and continue on the assigned route or ATC instructions.
TUXTLA 1A	Climb via TGZ R147 to D7.0 TGZ (or 3100 in case of DME failure), then turn LEFT within 10 NM to TGZ VOR and cross it according to the minimum crossing altitude A or ATC instructions.

MMTG/TGZ

ANGEL ALBINO CORZO 23 DEC 22 (10-3A) Eff 29 Dec

JEPPesen TUXTLA GUTIERREZ, MEXICO **SID**



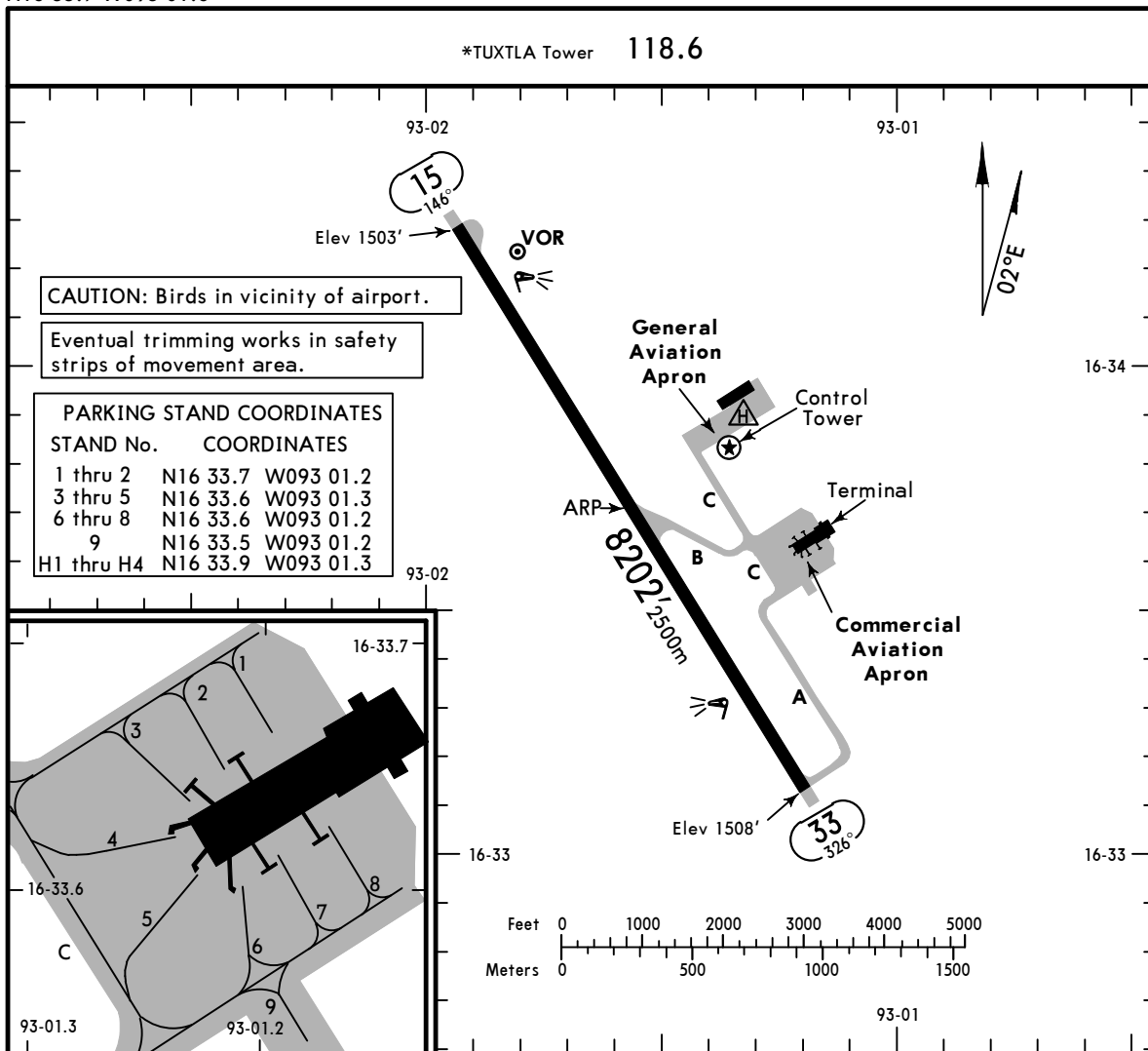
© JEPPesen, 2020, 2022. ALL RIGHTS RESERVED.

MMTG/TGZ

Apt Elev **1508'**
N16 33.7 W093 01.6

29 MAR 24 **(10-9)**

JEPPESSEN TUXTLA GUTIERREZ, MEXICO
ANGEL ALBINO CORZO



ADDITIONAL RUNWAY INFORMATION

RWY	HIRL REIL	PAPI-L (angle)	USABLE LENGTHS			WIDTH
			Threshold	Glide Slope	TAKE-OFF	
15	HIRL REIL	PAPI-L (angle 3.1°)				148'
33	HIRL REIL	PAPI-L (angle 3.0°)		7057' 2151m		45m

	TAKE-OFF	FOR FILING AS ALTERNATE
	All Rwys	
1 & 2 Eng	400-1	800-2
3 & 4 Eng	300-1/2	

CHANGES: Helicopter parking stands added.

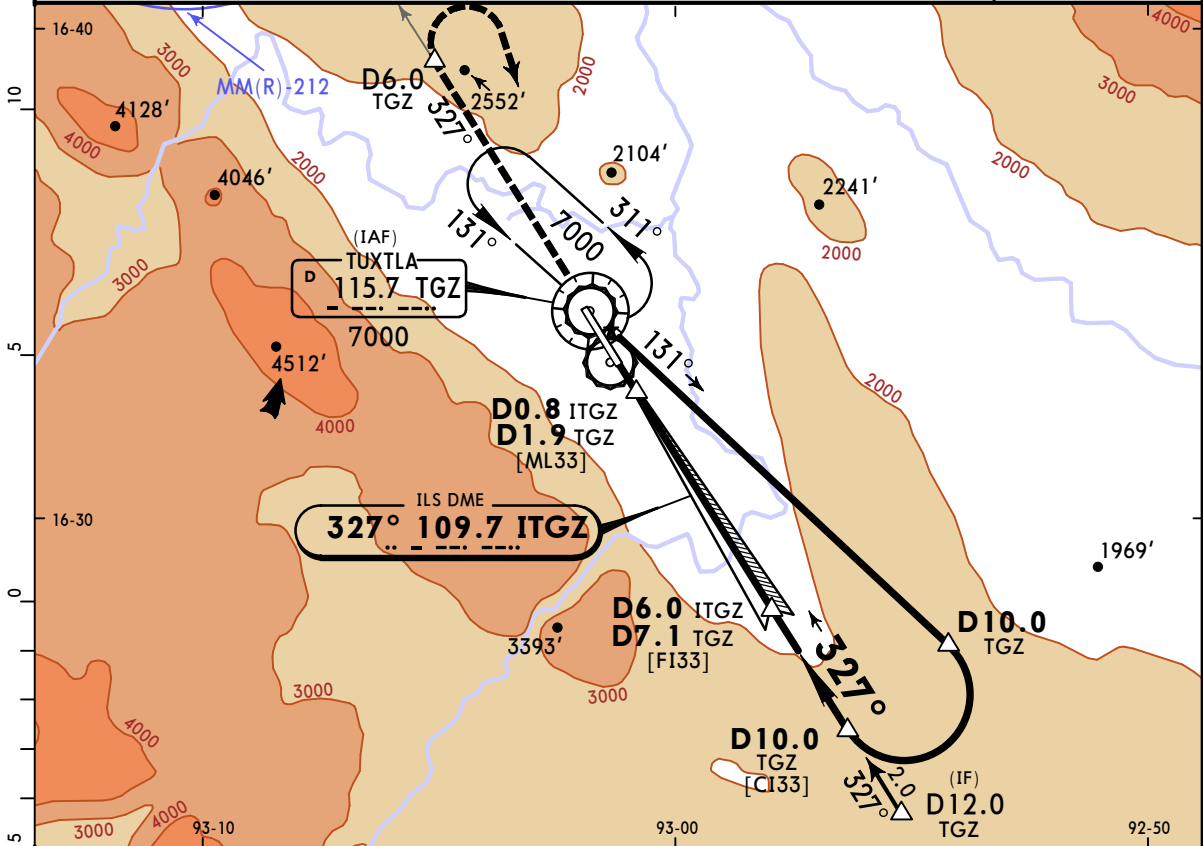
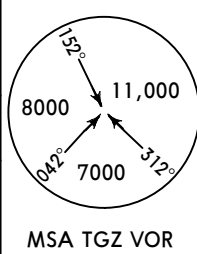
MMTG/TGZ

JEPPESEN TUXTLA GUTIERREZ, MEXICO

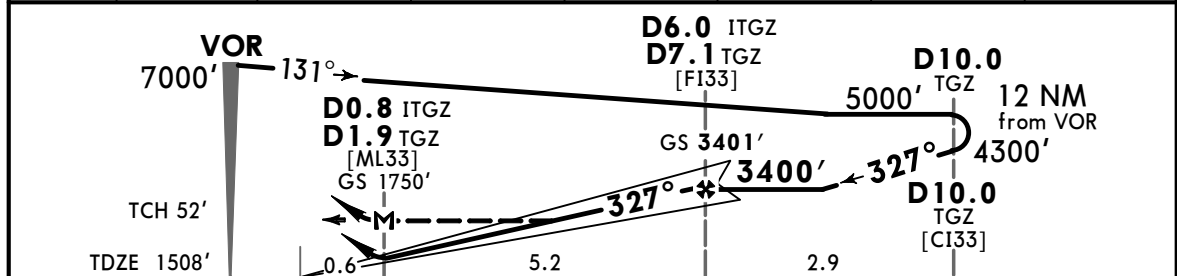
ANGEL ALBINO CORZO **Eff 25 Jan** (11-1)

ILS or LOC Z Rwy 33

*TUXTLA Approach 118.6			*TUXTLA Tower 118.6	
LOC ITGZ 109.7	Final Apch Crs 327°	GS D6.0 ITGZ D7.1 TGZ 3401' (1893')	ILS DA(H) 1750' (242')	Apt Elev 1508' TDZE 1508'
MISSED APCH: Climb via TGZ VOR R-327 to D6.0 TGZ, then turn RIGHT within 9 NM to TGZ VOR at the minimum holding altitude.				
Alt Set: IN (MB on req)		Trans level: FL195	Trans alt: 18500'	
1. DME required. 2. Do not use radio altimeter as reference to determine altitude over airport due to orographic conditions. 3. ILS DME usable with DME equipped aircraft with accurate instrument reading within 0.2 NM.				



LOC (GS out)	ITGZ DME	1.0	2.0	3.0	4.0	5.0	6.0
	ALTITUDE	1820'	2130'	2450'	2760'	3080'	3400'



Gnd speed-Kts	70	90	100	120	140	160			
GS	3:00°	372	478	531	637	743	849		
MAP at D0.8 ITGZ/D1.9 TGZ									
FAF to MAP	5.2	4:27	3:28	3:07	2:36	2:14	1:57		

ILS DA(H) 1750' (242')		LOC (GS out) MDA(H) 2100' (592')		Max Kts 90 120 140 165	TGZ via 115.7 R-327 D6.0 TGZ
A			1	90	2180' (672') - 1
B			1 3/4	120	2180' (672') - 2
C	3/4		2	140	2180' (672') - 2
D				165	2220' (712') - 2 1/4

MMTG/TGZ

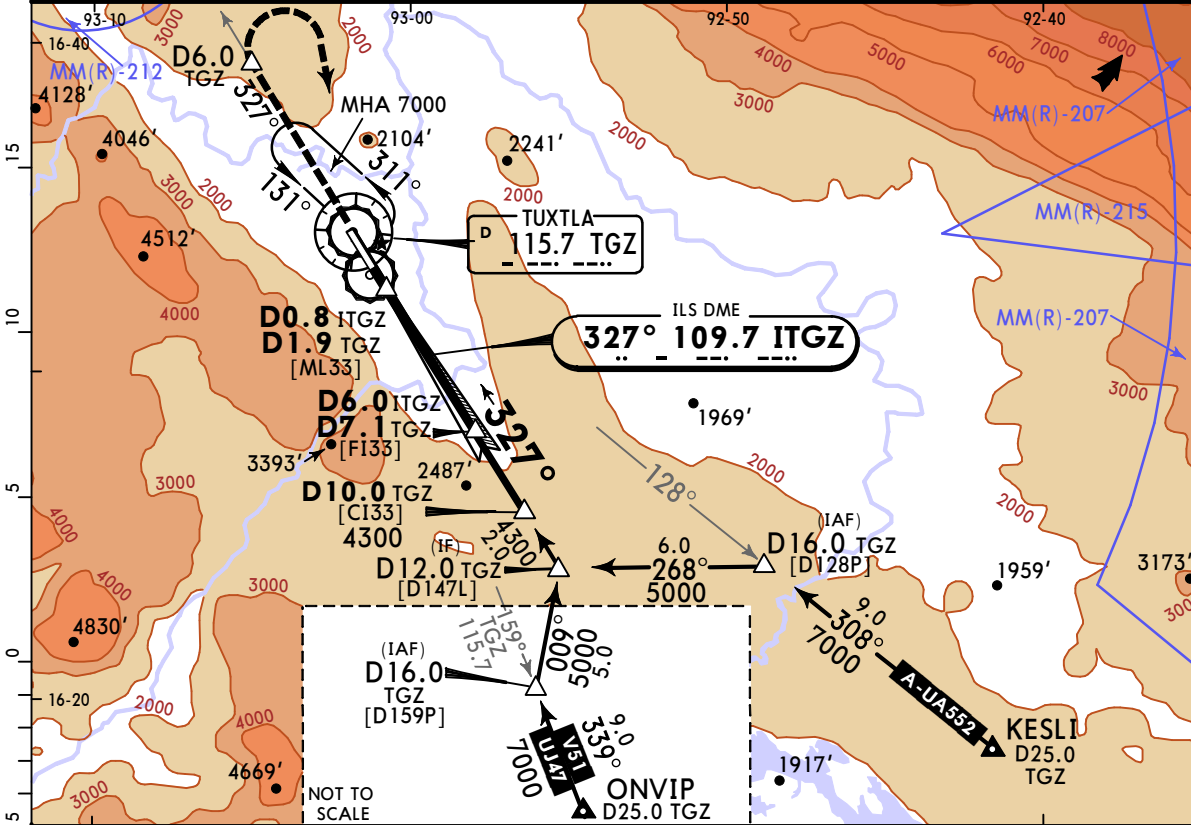
JEPPESEN TUXTLA GUTIERREZ, MEXICO

ANGEL ALBINO CORZO Eff 25 Jan

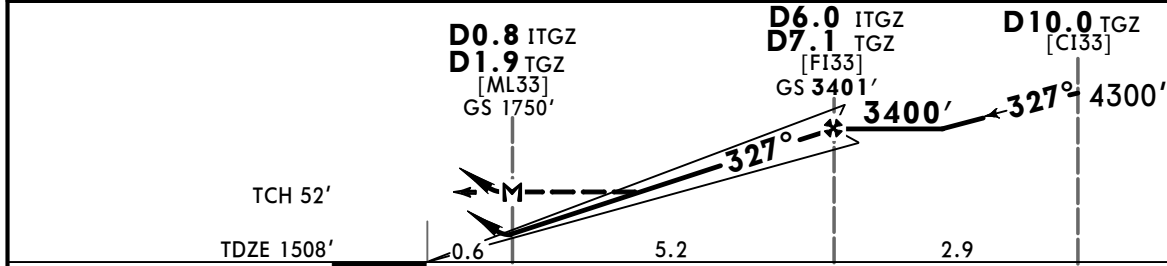
(11-2)

ILS or LOC Y Rwy 33

*TUXTLA Approach				*TUXTLA Tower	
118.6				118.6	
LOC ITGZ 109.7	Final Apch Crs 327°	GS D6.0 ITGZ D7.1 TGZ 3401' (1893')	ILS DA(H) 1750' (242')	Apt Elev 1508' TDZE 1508'	
<p>BRIEFING STRIP™</p> <p>MISSED APCH: Climb outbound via TGZ VOR R-327 to D6.0 TGZ, then turn RIGHT within 9 NM to TGZ VOR at the minimum holding altitude.</p> <p>Alt Set: IN (MB on req) Trans level: FL195 Trans alt: 18500'</p> <p>1. DME required. 2. Do not use radio altimeter as reference to determine altitude over airport due to orographic conditions. 3. ILS DME usable with DME equipped aircraft with accurate instrument reading within 0.2 NM.</p>					
					<p>MSA TGZ VOR</p>



LOC (GS out)	ITGZ DME ALTITUDE	1.0	2.0	3.0	4.0	5.0	6.0
		1820'	2130'	2450'	2760'	3080'	3400'



Gnd speed-Kts	70	90	100	120	140	160	REIL PAPI-L	↑ TGZ via 115.7 R-327 D6.0 TGZ	
GS	3.00°	372	478	531	637	743			849
MAP at D0.8 ITGZ/D1.9 TGZ									
FAF to MAP	5.2	4:27	3:28	3:07	2:36	2:14	1:57		

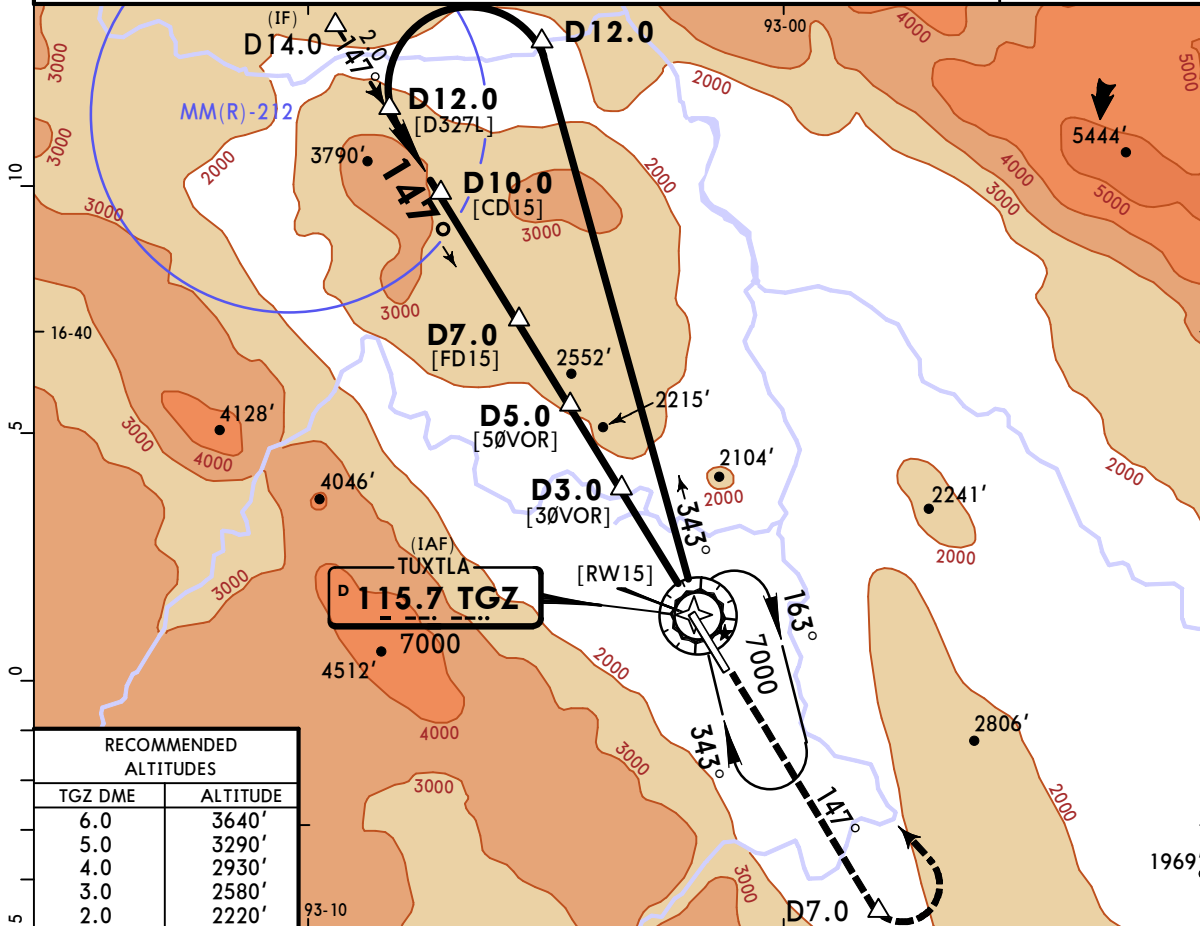
STRAIGHT-IN LANDING RWY33			CIRCLE-TO-LAND	
ILS DA(H) 1750' (242')		LOC (GS out) MDA(H) 2100' (592')		Not Authorized West of Rwy 15/33
A		1	90	2180' (672') -1
B			120	
C	3/4	1 3/4	140	2180' (672') -2
D		2	165	2220' (712') -2 1/4

MMTG/TGZ ANGEL ALBINO CORZO 19 JAN 24 (13-1) Eff 25 Jan

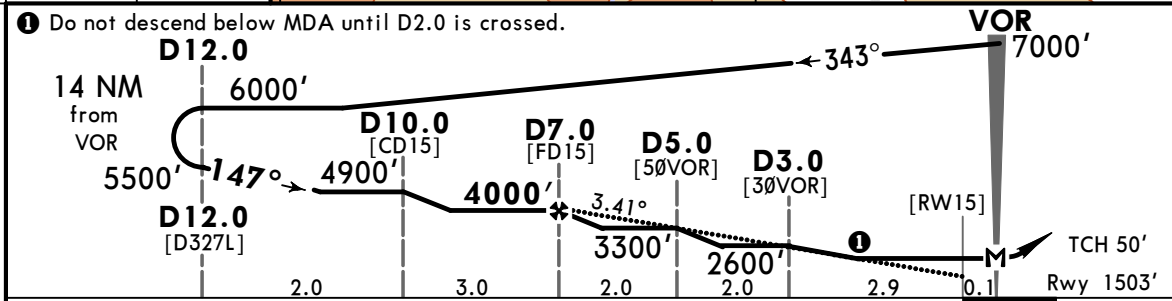
JEPPESEN TUXTLA GUTIERREZ, MEXICO

VOR Z Rwy 15

*TUXTLA Approach				*TUXTLA Tower	
118.6				118.6	
VOR	Final	D7.0	MDA(H)	Apt Elev 1508'	
TGZ	Apch Crs	4000' (2497')	2100' (597')	Rwy 1503'	
115.7	147°				
MISSED APCH: Climb outbound via TGZ VOR R-147 to D7.0, then turn LEFT within 10 NM to TGZ VOR at the minimum holding altitude.					
Alt Set: IN (MB on req) Trans level: FL195 Trans alt: 18500'					
1. DME required. 2. Do not use Radio altimeter as a reference to determine altitude over the airport due to orographic conditions.					
					MSA TGZ VOR



RECOMMENDED ALTITUDES	
TGZ DME	ALTITUDE
6.0	3640'
5.0	3290'
4.0	2930'
3.0	2580'
2.0	2220'



Gnd speed-Kts	70	90	100	120	140	160			
Descent Angle	3.41°	422	543	603	724	845	965		
MAP at VOR									
FAF to MAP	7.0	6:00	4:40	4:12	3:30	3:00	2:38		

STRAIGHT-IN LANDING RWY 15				CIRCLE-TO-LAND	
MDA(H) 2100' (597')				Not Authorized West of Rwy 15/33	
A		1		Max Kts	
B				90	2180'(672') -1
C		1 1/2		140	2180'(672') -2
D		1 3/4		165	2220'(712') -2 1/4

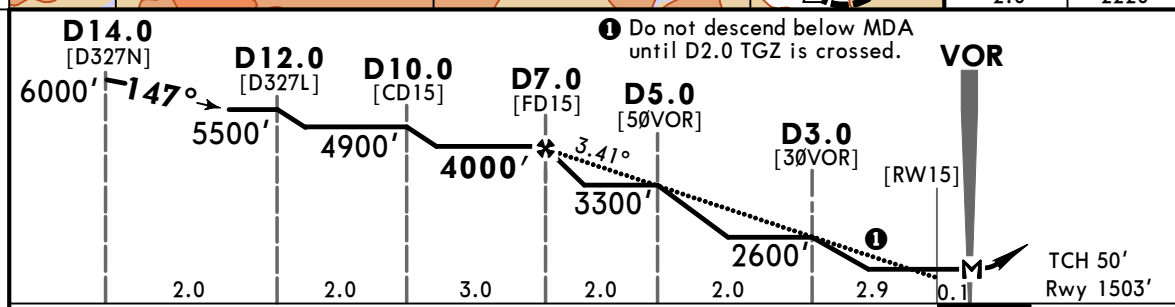
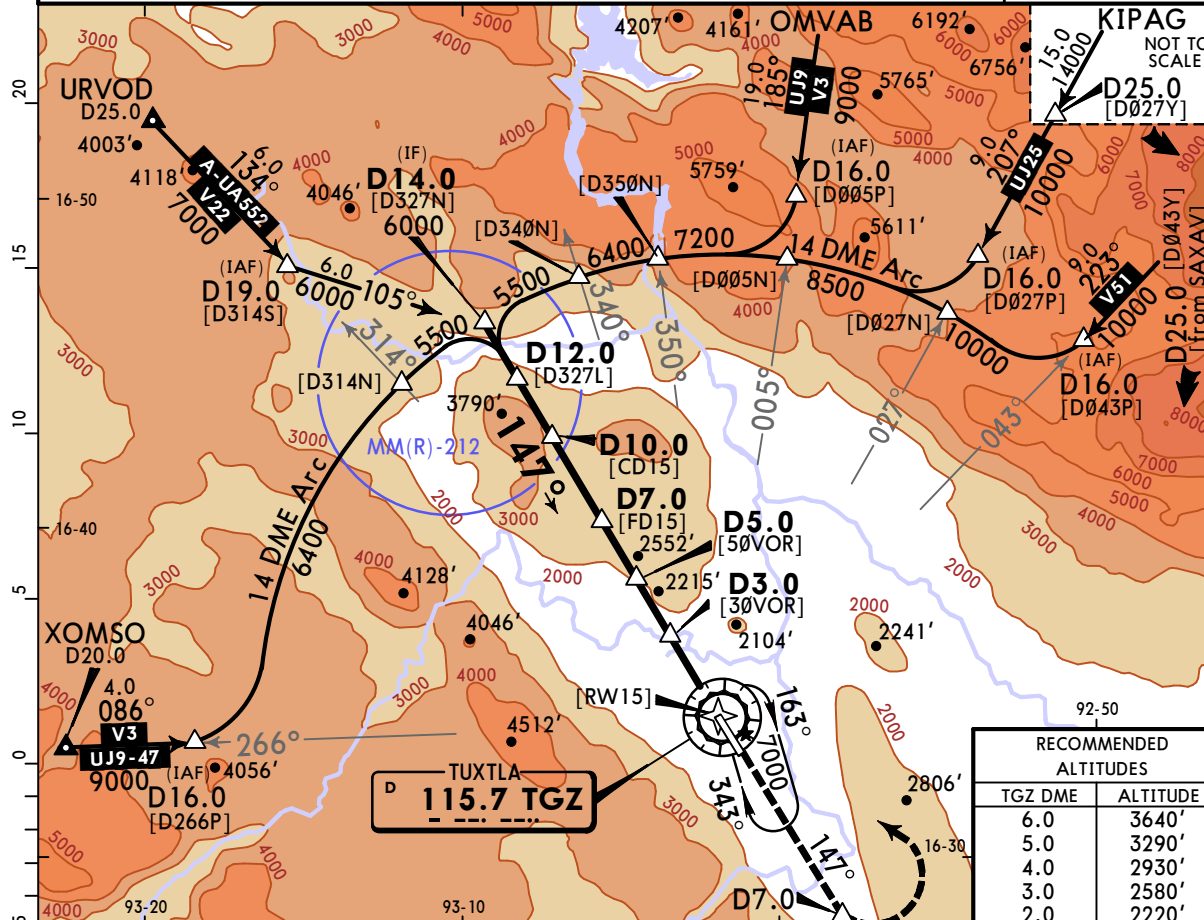
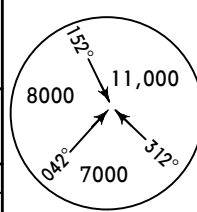
MMTG/TGZ

ANGEL ALBINO CORZO 19 JAN 24 (13-2) Eff 25 Jan

JEPPESEN TUXTLA GUTIERREZ, MEXICO

VOR Y Rwy 15

*TUXTLA Approach				*TUXTLA Tower	
118.6				118.6	
VOR TGZ 115.7	Final Apch Crs 147°	D7.0 4000' (2497')	MDA(H) 2100' (597')	Apt Elev 1508' Rwy 1503'	
MISSED APCH: Climb outbound via TGZ VOR R-147 to D7.0, then turn LEFT within 10 NM to TGZ VOR at the minimum holding altitude.					
Alt Set: IN (MB on req)		Trans level: FL195		Trans alt: 18500'	
1. DME required. 2. Do not use radio altimeter as reference to determine altitude over airport due to orographic conditions.					



Gnd speed-Kts	70	90	100	120	140	160	REIL PAPI-L	TGZ via 115.7 R-147 D7.0
Descent Angle	3.41°	422	543	603	724	845		
MAP at VOR								
FAF to MAP	7.0	6:00	4:40	4:12	3:30	3:00		

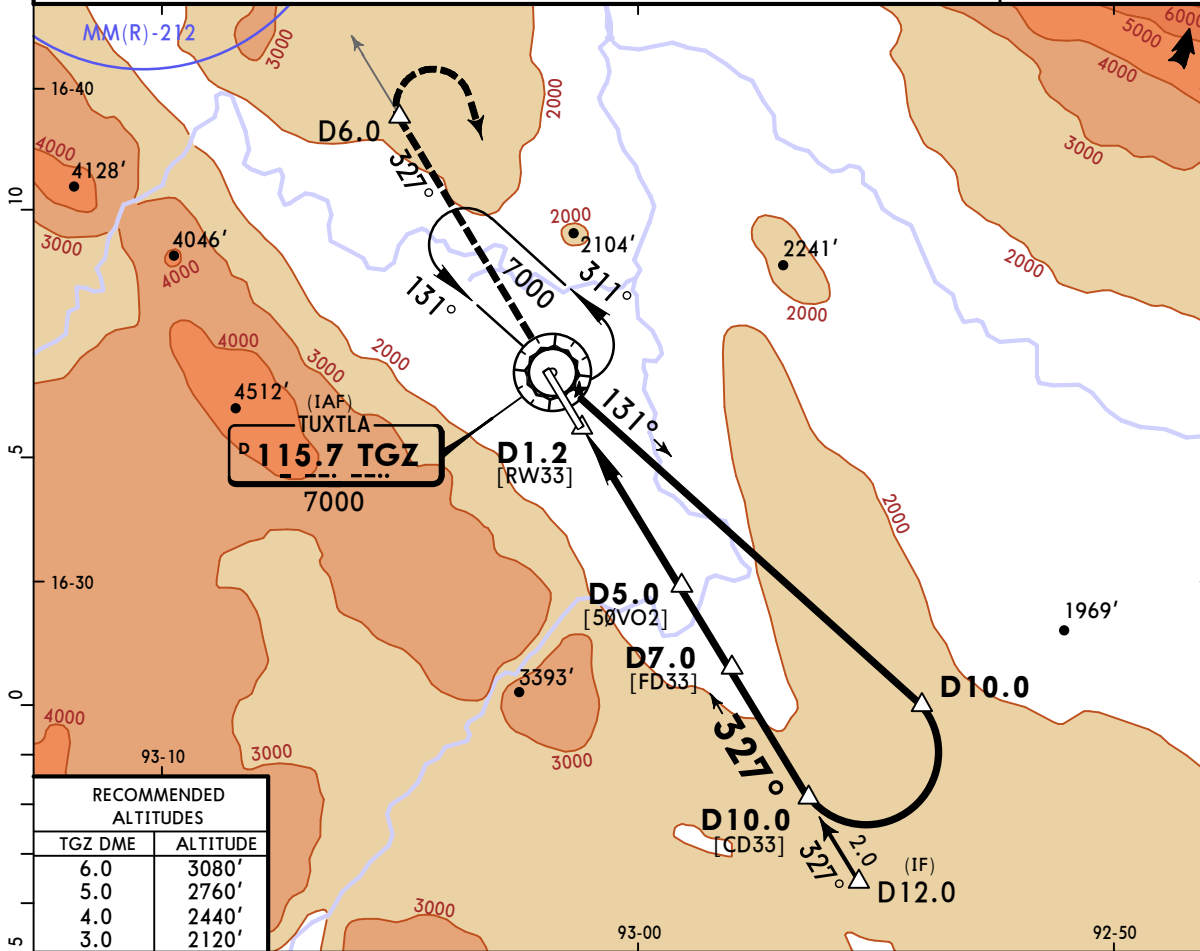
STRAIGHT-IN LANDING RWY 15			CIRCLE-TO-LAND		
MDA(H) 2100' (597')			Not Authorized West of Rwy 15/33		
A	1	90	2180' (672') -1		
B		120			
C	1½	140	2180' (672') -2		
D	1¾	165	2220' (712') -2 ¼		

MMTG/TGZ ANGEL ALBINO CORZO

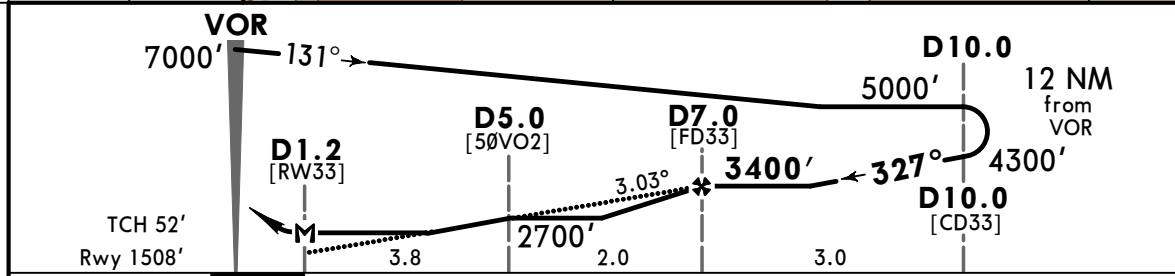
JEPPESEN TUXTLA GUTIERREZ, MEXICO

19 JAN 24 (13-3) Eff 25 Jan VOR Z Rwy 33

*TUXTLA Approach 118.6				*TUXTLA Tower 118.6	
VOR TGZ 115.7	Final Apch Crs 327°	D7.0 3400' (1892')	MDA(H) 2100' (592')	Apt Elev 1508' Rwy 1508'	<p>MSA TGZ VOR</p>
MISSED APCH: Climb outbound via TGZ VOR R-327 to D6.0, then turn RIGHT within 9 NM to TGZ VOR at the minimum holding altitude.					
Alt Set: IN (MB on req) Trans level: FL195 Trans alt: 18500' 1. DME required. 2. Do not use radio altimeter as reference to determine altitude over airport due to orographic conditions.					



RECOMMENDED ALTITUDES	
TGZ DME	ALTITUDE
6.0	3080'
5.0	2760'
4.0	2440'
3.0	2120'



Gnd speed-Kts	70	90	100	120	140	160	REIL PAPI-L	TGZ via 115.7 R-327	D6.0
Descent Angle 3.03°	375	482	536	643	750	858			
MAP at D1.2									
FAF to MAP	5.8	4:58	3:52	3:29	2:54	2:10			

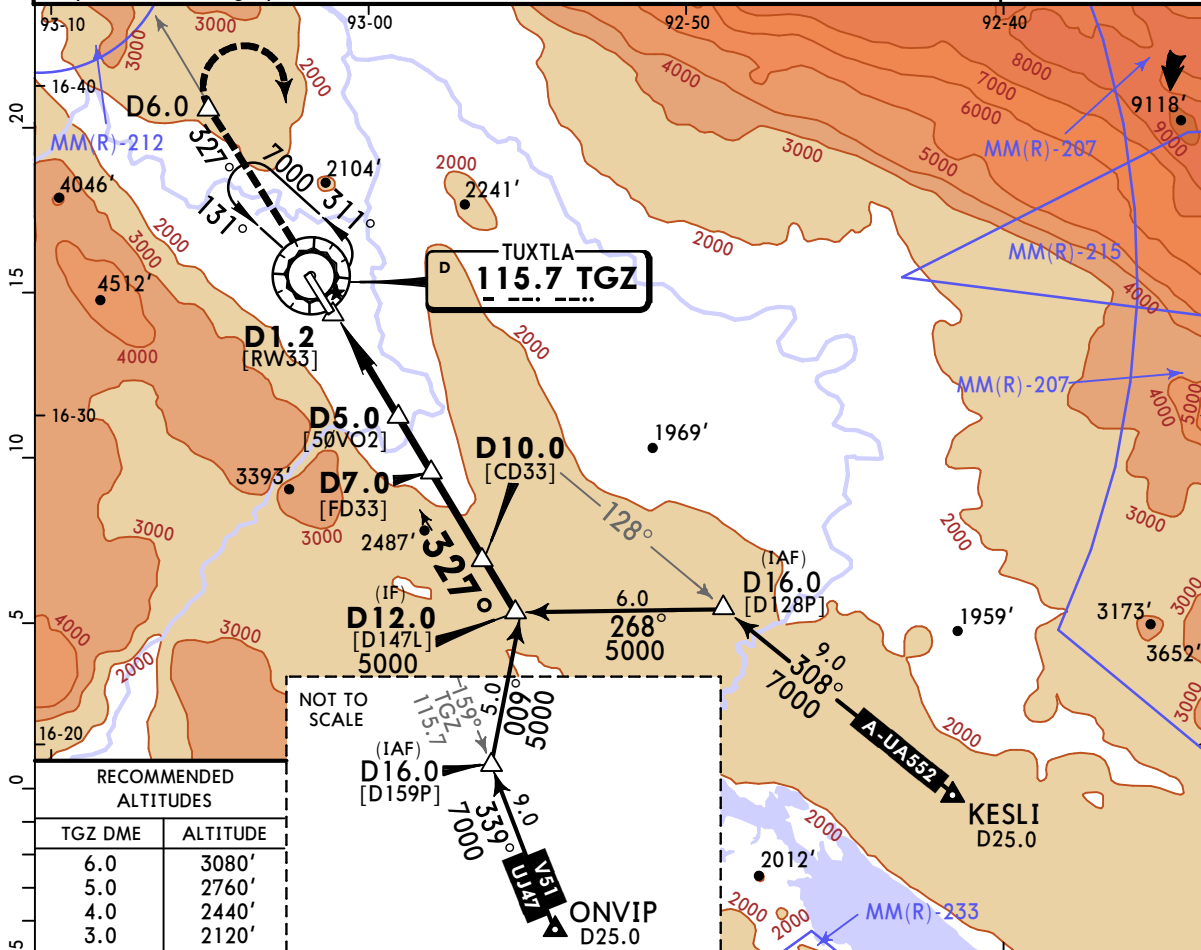
STRAIGHT-IN LANDING RWY 33			CIRCLE-TO-LAND		
MDA(H) 2100' (592')			Not Authorized West of Rwy 15/33		
A	B	C	D	Max Kts	MDA(H)
		1	1 3/4	90	2180' (672') -1
				120	2180' (672') -2
				140	2180' (672') -2
				165	2220' (712') -2 1/4

MMTG/TGZ ANGEL ALBINO CORZO 19 JAN 24 (13-4) Eff 25 Jan

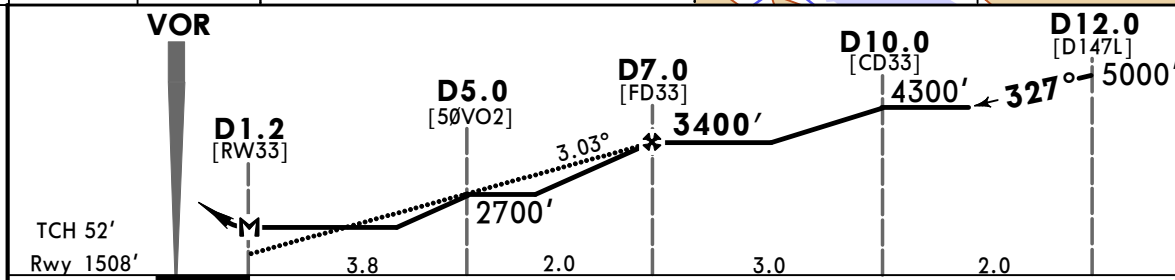
JEPPESEN TUXTLA GUTIERREZ, MEXICO

VOR Y Rwy 33

*TUXTLA Approach 118.6				*TUXTLA Tower 118.6		
VOR TGZ 115.7	Final Apch Crs 327°	D7.0 3400' (1892')	MDA(H) 2100' (592')	Apt Elev 1508'	Rwy 1508'	
MISSED APCH: Climb outbound via TGZ VOR R-327 to D6.0, then turn RIGHT within 9 NM to TGZ VOR at the minimum holding altitude.						
Alt Set: IN (MB on req)			Trans level: FL195	Trans alt: 18500'		
1. DME required. 2. Do not use radio altimeter as reference to determine altitude over airport due to orographic conditions.						



RECOMMENDED ALTITUDES	
TGZ DME	ALTITUDE
6.0	3080'
5.0	2760'
4.0	2440'
3.0	2120'



Gnd speed-Kts	70	90	100	120	140	160	REIL PAPI-L	↑ via 115.7 R-327	TGZ D6.0
Descent Angle 3.03°	375	482	536	643	750	858			
MAP at D1.2									
FAF to MAP	5.8	4:58	3:52	3:29	2:54	2:29	2:10		

STRAIGHT-IN LANDING RWY 33			CIRCLE-TO-LAND		
MDA(H) 2100' (592')			Not Authorized West of Rwy 15/33		
		Max Kts	MDA(H)		
A	1	90	2180'(672') -1		
B	1	120	2180'(672') -2		
C	1 3/4	140	2180'(672') -2		
D	2	165	2220'(712') -2 1/4		