

General Information

Location: POZA RICA MEX
ICAO/IATA: MMPA / PAZ
Lat/Long: N20° 36.1', W097° 27.6'
Elevation: 497 ft

Airport Use: Public
Daylight Savings: Not Observed
UTC Conversion: +6:00 = UTC
Magnetic Variation: 5.0° E

Fuel Types: 100 Octane (LL), Jet A
Customs: No
Airport Type: IFR
Landing Fee: No
Control Tower: Yes
Jet Start Unit: No
LLWS Alert: No
Beacon: Yes

Sunrise: 1229 Z
Sunset: 2359 Z

Runway Information

Runway: 08
Length x Width: 5922 ft x 148 ft
Surface Type: asphalt
TDZ-Elev: 497 ft
Lighting: Edge, REIL

Runway: 26
Length x Width: 5922 ft x 148 ft
Surface Type: asphalt
TDZ-Elev: 472 ft
Lighting: Edge, REIL

Communication Information

Poza Rica Tower: 118.900
Mazatlan Control ACC: 128.000 RCO

MMPA/PAZ
TAJIN

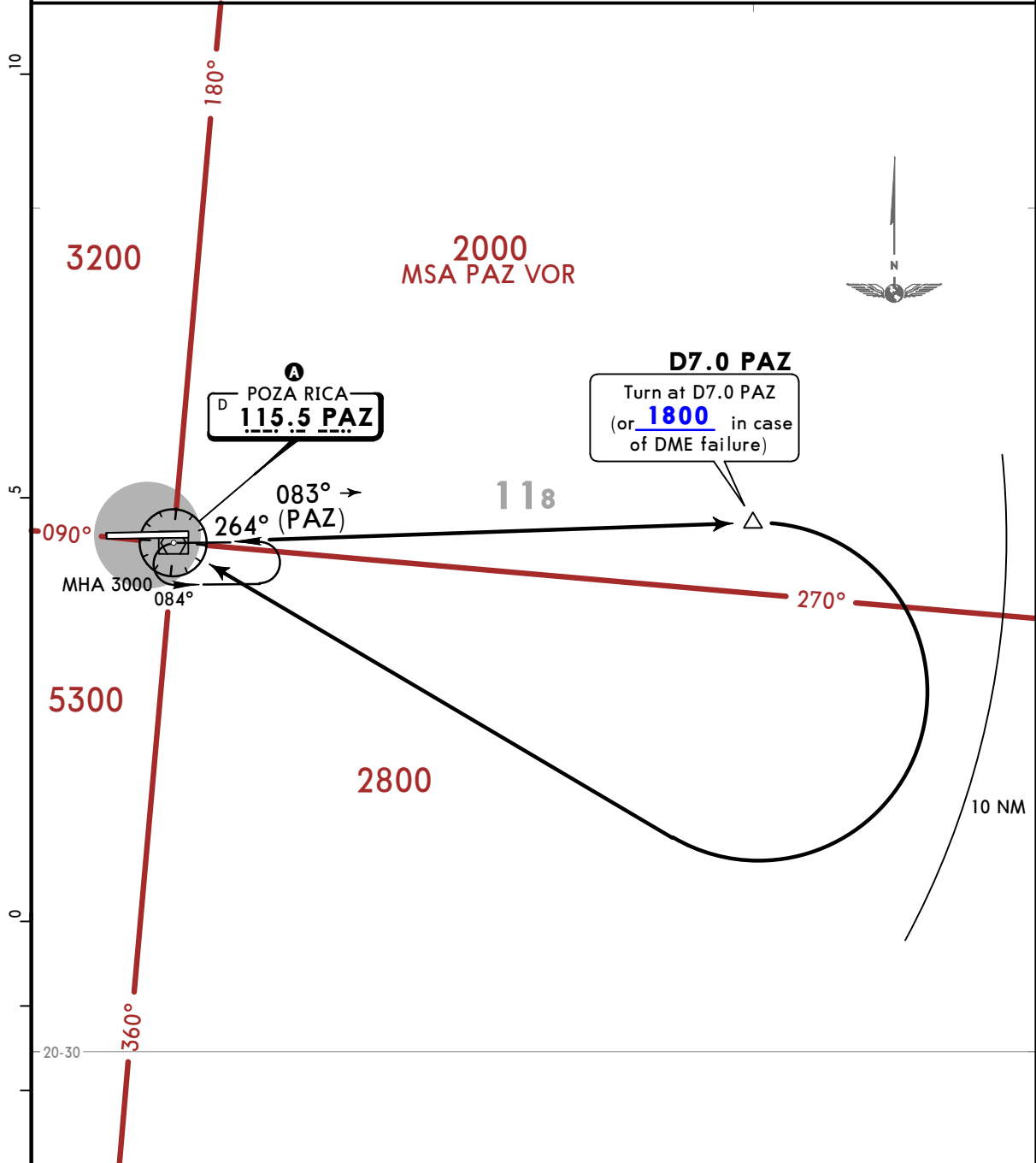
JEPPESEN
9 JUN 23 10-3 Eff 15 Jun

POZA RICA, MEXICO

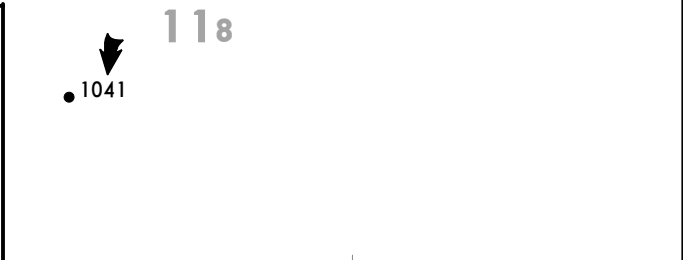
SID

Apt Elev 497	Trans alt: 18500
-----------------	------------------

POZA RICA 3A DEPARTURE
(PAZ3A)
(RWY 08)



A MINIMUM CROSSING ALTITUDE			
COAPA		UM-345	3000
LIED	R-522	UR-522, UT-31	3000
CZA		UT-20	3000
VER	V-23, A-552	UT-161	3000
APN	V-18	UJ-39	7000
PCA	V-34	UJ-102	7000
TAM	V-23, A-552		3000



INITIAL CLIMB
Climb on PAZ R083 to D7.0 PAZ (or 1800 in case of DME failure), turn RIGHT within 10 NM to PAZ VOR and cross PAZ VOR at the MCA A for the assigned route or ATC instructions.

CHANGES: VOR symbol.

MMPA/PAZ
TAJIN

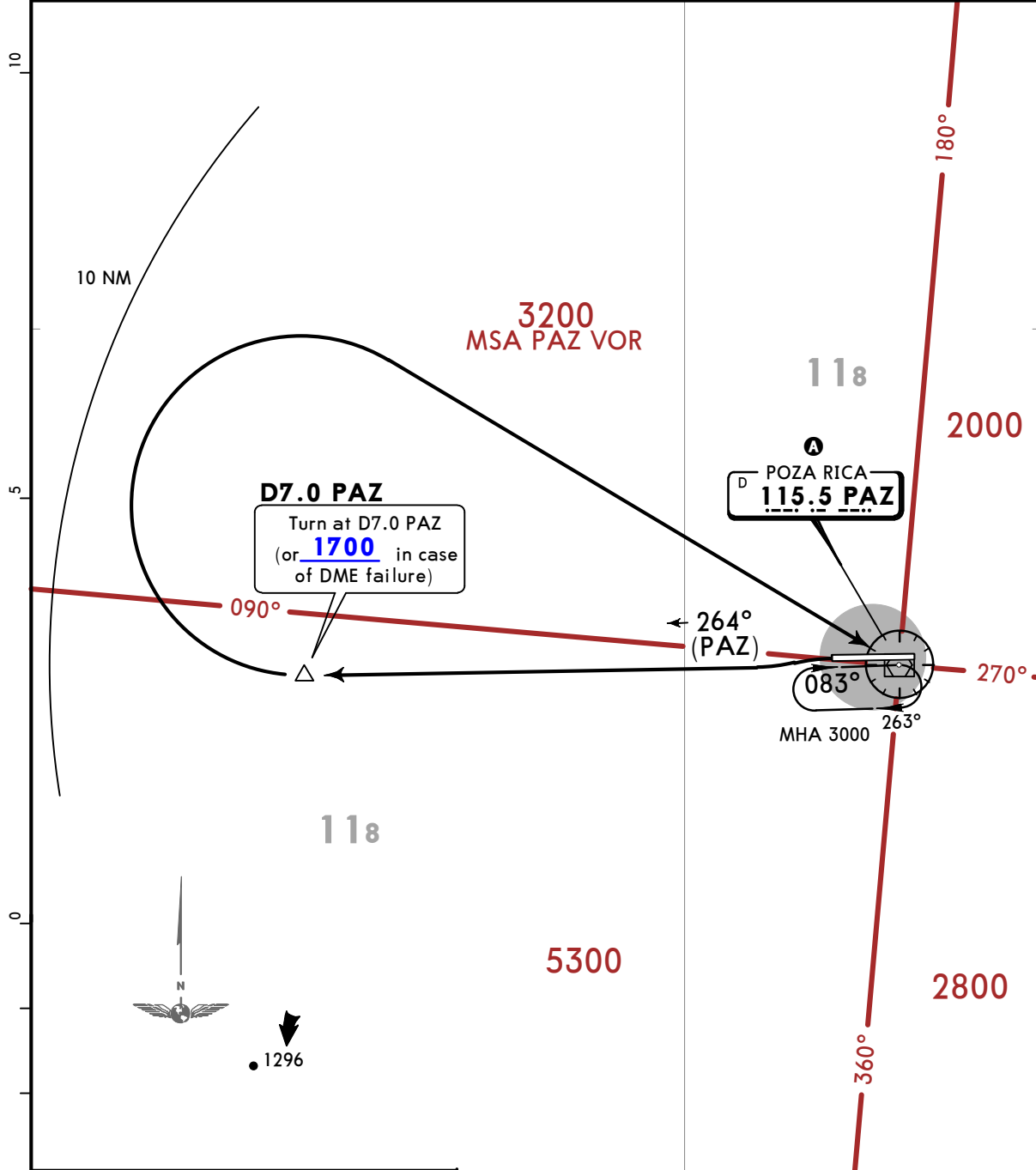
JEPPESEN
9 JUN 23 (10-3A) Eff 15 Jun

POZA RICA, MEXICO

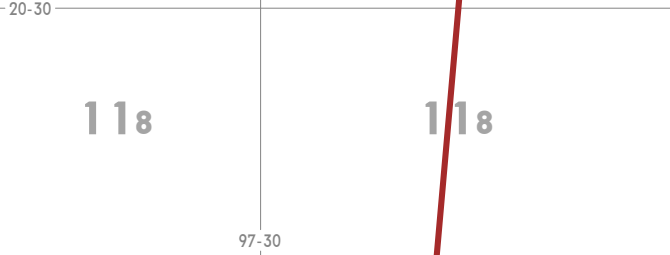
SID

Apt Elev 497	Trans alt: 18500
-----------------	------------------

POZA RICA 3B DEPARTURE
(PAZ3B)
(RWY 26)



A MINIMUM CROSSING ALTITUDE			
COAPA		UM-345	3000
LIED	R-522	UR-522, UT-31	3000
CZA		UT-20	3000
VER	V-23, A-552	UT-161	3000
APN	V-18	UJ-39	7000
PCA	V-34	UJ-102	7000
TAM	V-23, A-552		3000



INITIAL CLIMB
Climb on PAZ R264 to D7.0 PAZ (or 1700 in case of DME failure), turn RIGHT within 10 NM to PAZ VOR and cross PAZ VOR at the MCA A for the assigned route or ATC instructions.

MMPA/PAZ

Apt Elev **497'**
N20 36.1 W097 27.6

JEPPESEN

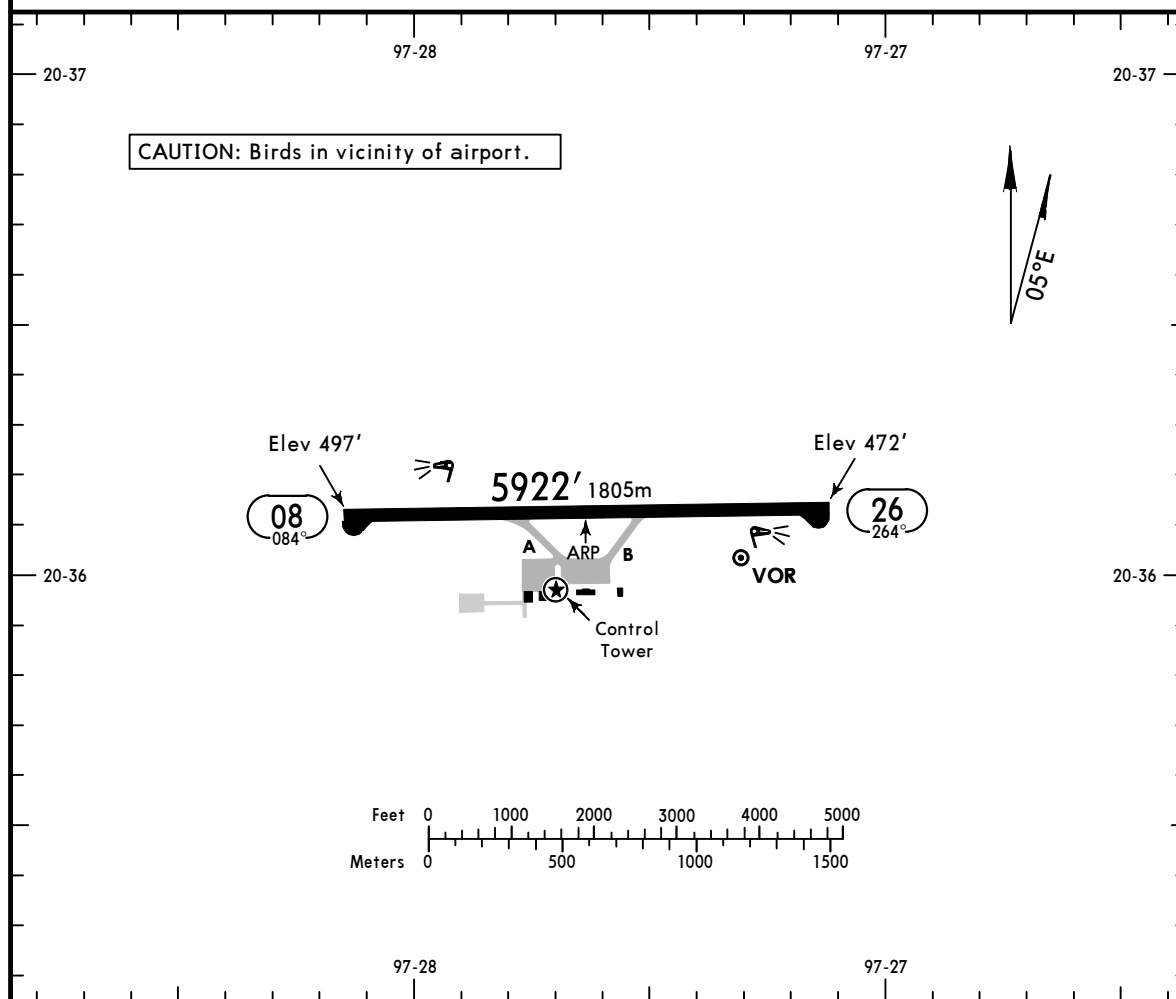
9 JUN 23

10-9 Eff 15 Jun

POZA RICA, MEXICO

TAJIN

*POZA RICA Tower 118.9



ADDITIONAL RUNWAY INFORMATION

RWY		USABLE LENGTHS			WIDTH
		Threshold	Landing Beyond Glide Slope	TAKE-OFF	
08	HIRL PAPI-L (angle 3.0°)				148'
26	HIRL PAPI-L (angle 3.0°)				45m

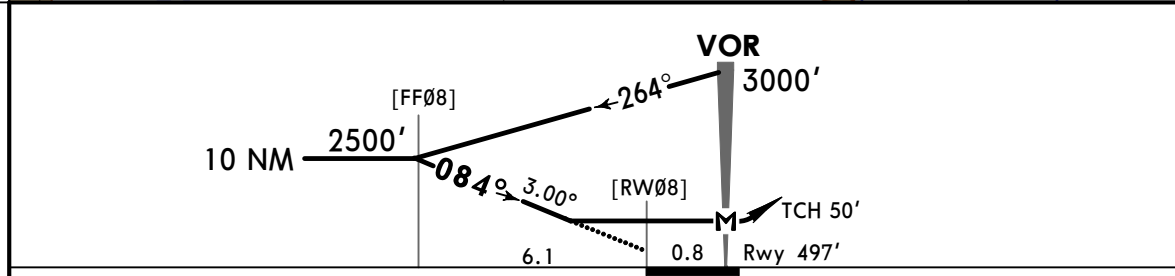
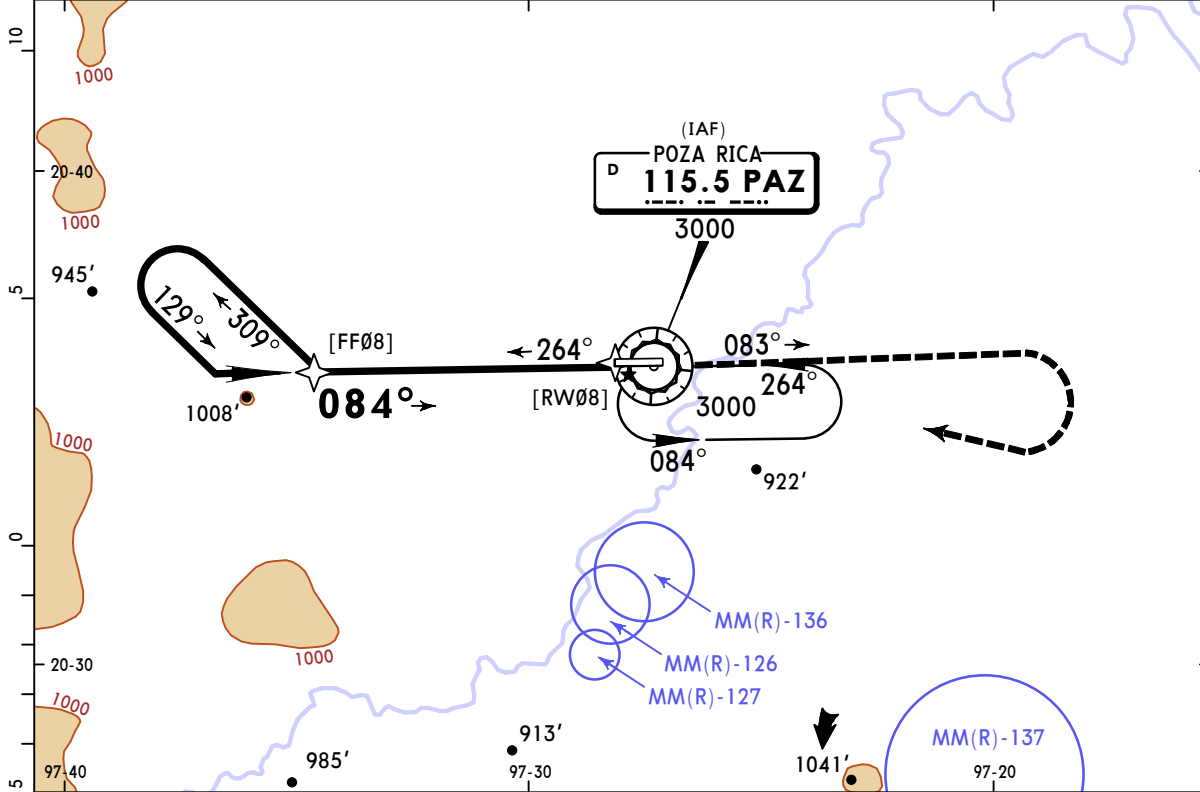
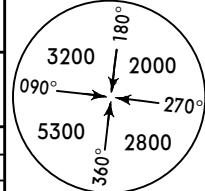
TAKE-OFF		FOR FILING AS ALTERNATE	
	All Rwys		
1 & 2 Eng	500-1	A	1000-2
3 & 4 Eng	500-1/2	B	
		C	
		D	

**MMPA/PAZ
TAJIN**

JEPPESSEN
9 JUN 23 **13-1** Eff 15 Jun

**POZA RICA, MEXICO
VOR Rwy 08**

*MEXICO Control (Approach) 128.0			*POZA RICA Tower 118.9		
VOR PAZ 115.5	Final Apch Crs 084°	No FAF	MDA(H) 1360' (863')	Apt Elev 497'	Rwy 497'
MISSED APCH: Climb outbound on PAZ VOR R-083, then turn RIGHT within 10 NM to PAZ VOR to the minimum holding altitude.					
MISSED APCH: Max Distance Outbound Track 7NM					
Gnd Speed-Kts	80	100	120	140	160 180 200
7 NM to turn	5:15	4:12	3:30	3:00	2:38 2:20 2:06
Alt Set: MB (IN on req) Rwy Elev: 18 MB Trans level: FL195 Trans alt: 18500'					
CAUTION: Do not use radio altimeter as reference to determine altitude over the airport due to orographic conditions.					



Gnd speed-Kts	70	90	100	120	140	160	PAPI-L	↑ PAZ on 115.5 R-083
Descent Angle 3.00°	372	478	531	637	743	849		
MAP at VOR								

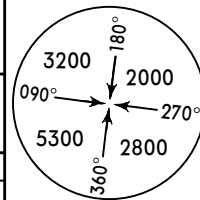
STRAIGHT-IN LANDING RWY 08		CIRCLE-TO-LAND	
MDA(H) 1360' (863')		Max Kts	MDA(H)
A	1	90	1360' (863') - 1
B	1¼	120	1360' (863') - 1¼
C	2½	140	1360' (863') - 2½
D	2¾	165	1360' (863') - 2¾

MMPA/PAZ
TAJIN

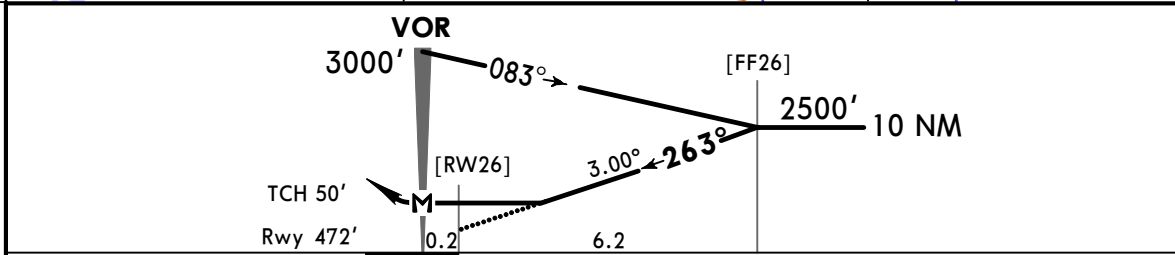
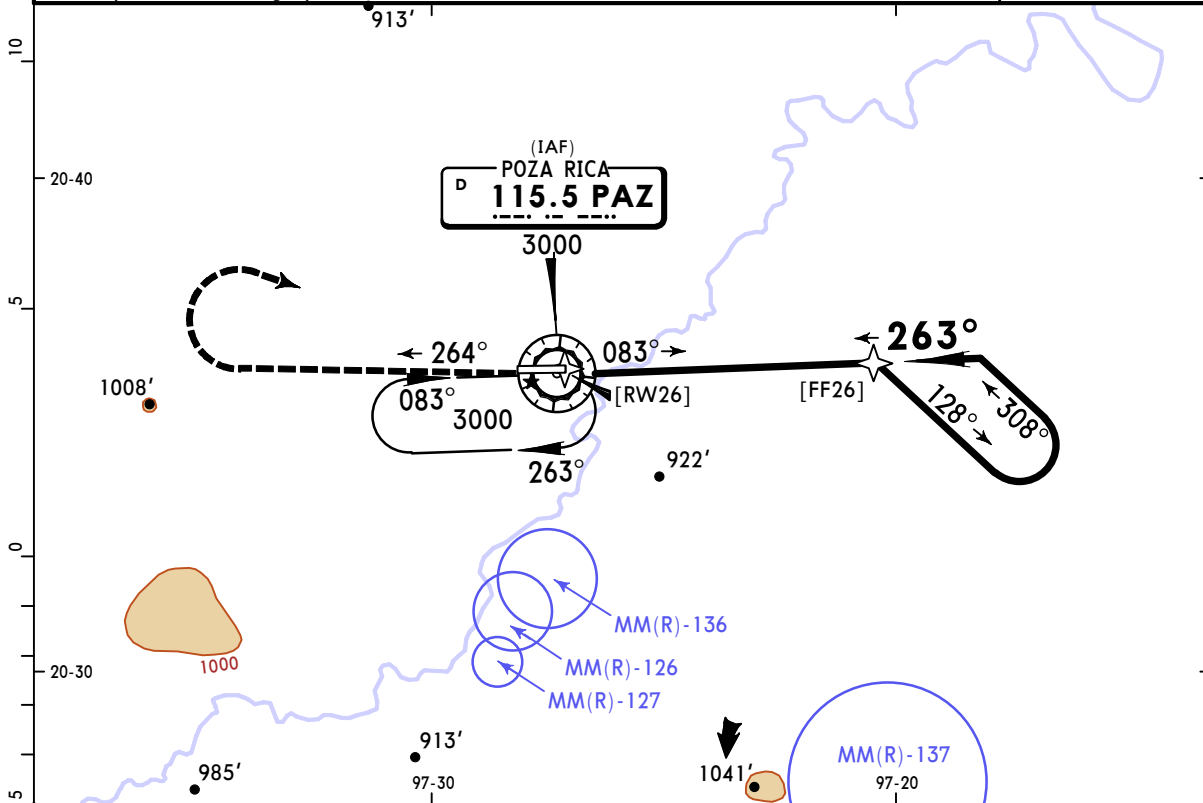
JEPPESEN
9 JUN 23 **13-2** Eff 15 Jun

POZA RICA, MEXICO
VOR Rwy 26

*MEXICO Control (Approach) 128.0			*POZA RICA Tower 118.9																									
VOR PAZ 115.5	Final Apch Crs 263°	No FAF	MDA(H) 1300' (828')	Apt Elev 497' Rwy 472'																								
MISSED APCH: Climb outbound on PAZ VOR R-264, then turn RIGHT within 10 NM to PAZ VOR to the minimum holding altitude.																												
<table border="1"> <tr> <td colspan="7">MISSED APCH: Max Distance Outbound Track 7 NM</td> </tr> <tr> <td>Gnd Speed-Kts</td> <td>80</td> <td>100</td> <td>120</td> <td>140</td> <td>160</td> <td>180</td> <td>200</td> </tr> <tr> <td>7 NM to turn</td> <td>5:15</td> <td>4:12</td> <td>3:30</td> <td>3:00</td> <td>2:38</td> <td>2:20</td> <td>2:06</td> </tr> </table>						MISSED APCH: Max Distance Outbound Track 7 NM							Gnd Speed-Kts	80	100	120	140	160	180	200	7 NM to turn	5:15	4:12	3:30	3:00	2:38	2:20	2:06
MISSED APCH: Max Distance Outbound Track 7 NM																												
Gnd Speed-Kts	80	100	120	140	160	180	200																					
7 NM to turn	5:15	4:12	3:30	3:00	2:38	2:20	2:06																					
Alt Set: MB (IN on req) Rwy Elev: 17 MB Trans level: FL195 Trans alt: 18500'																												
CAUTION: Do not use radio altimeter as reference to determine altitude over the airport due to orographic conditions.																												



MSA PAZ VOR



Gnd speed-Kts	70	90	100	120	140	160			
Descent Angle 3.00°	372	478	531	637	743	849			
MAP at VOR									

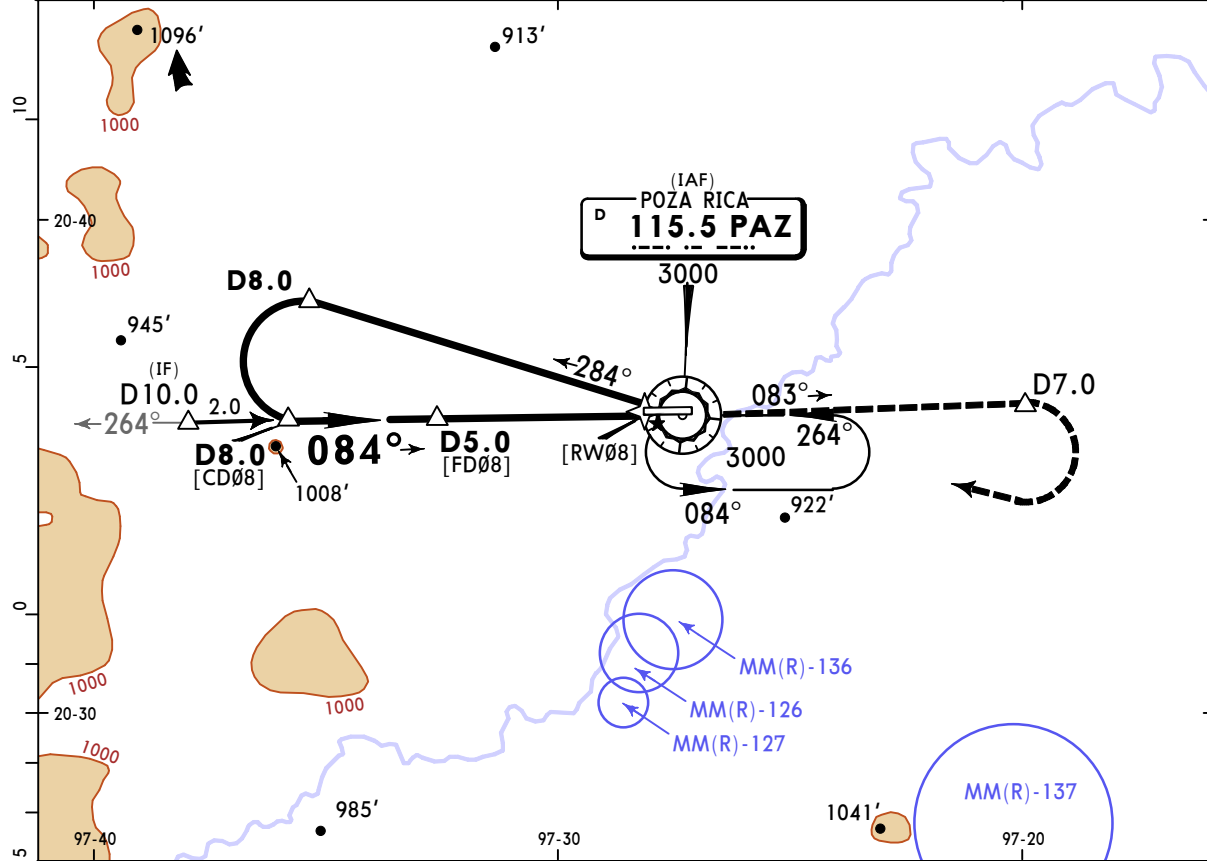
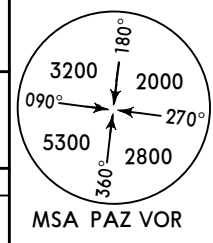
STRAIGHT-IN LANDING RWY 26			CIRCLE-TO-LAND		
MDA(H) 1300' (828')					
		Max Kts	MDA(H)		
A	1	90	1360' (863') - 1		
B	1 1/4	120	1360' (863') - 1 1/4		
C	2 1/2	140	1360' (863') - 2 1/2		
D	3 3/4	165	1360' (863') - 3 3/4		

MMPA/PAZ
TAJIN

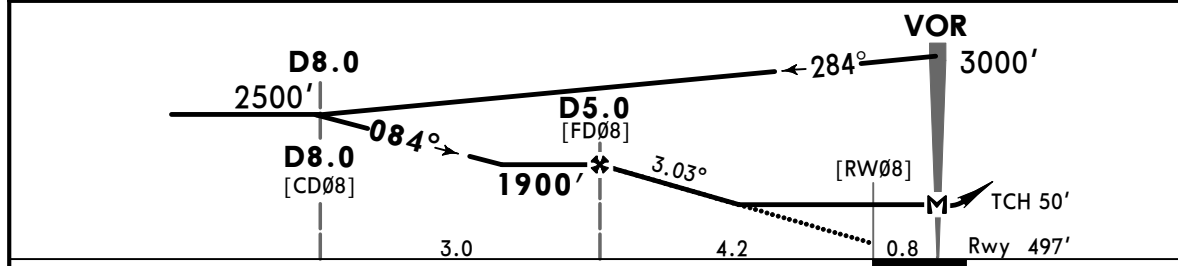
JEPPESEN
9 JUN 23 (13-3) Eff 15 Jun

POZA RICA, MEXICO
VOR DMÉ Rwy 08

*MEXICO Control (Approach)				*POZA RICA Tower	
128.0				118.9	
VOR PAZ 115.5	Final Apch Crs 084°	D5.0 1900' (1403')	MDA(H) 980' (483')	Apt Elev 497' Rwy 497'	
MISSED APCH: Climb outbound on PAZ VOR R-083 to D7.0, turn RIGHT within 10 NM to PAZ VOR to the minimum holding altitude.					
Alt Set: MB (IN on req) Rwy Elev: 18 MB Trans level: FL195 Trans alt: 18500'					
CAUTION: Do not use radio altimeter as reference to determine altitude over the airport due to orographic conditions.					



PAZ DME	5.0	4.0	3.0
ALTITUDE	1900'	1580'	1260'



Gnd speed-Kts	70	90	100	120	140	160	PAPI-L	PAZ on 115.5 D7.0 R-083	
Descent Angle	3.03°	375	482	536	643	750			858
MAP at VOR									
FAF to MAP	5.0	4:17	3:20	3:00	2:30	2:09			1:53

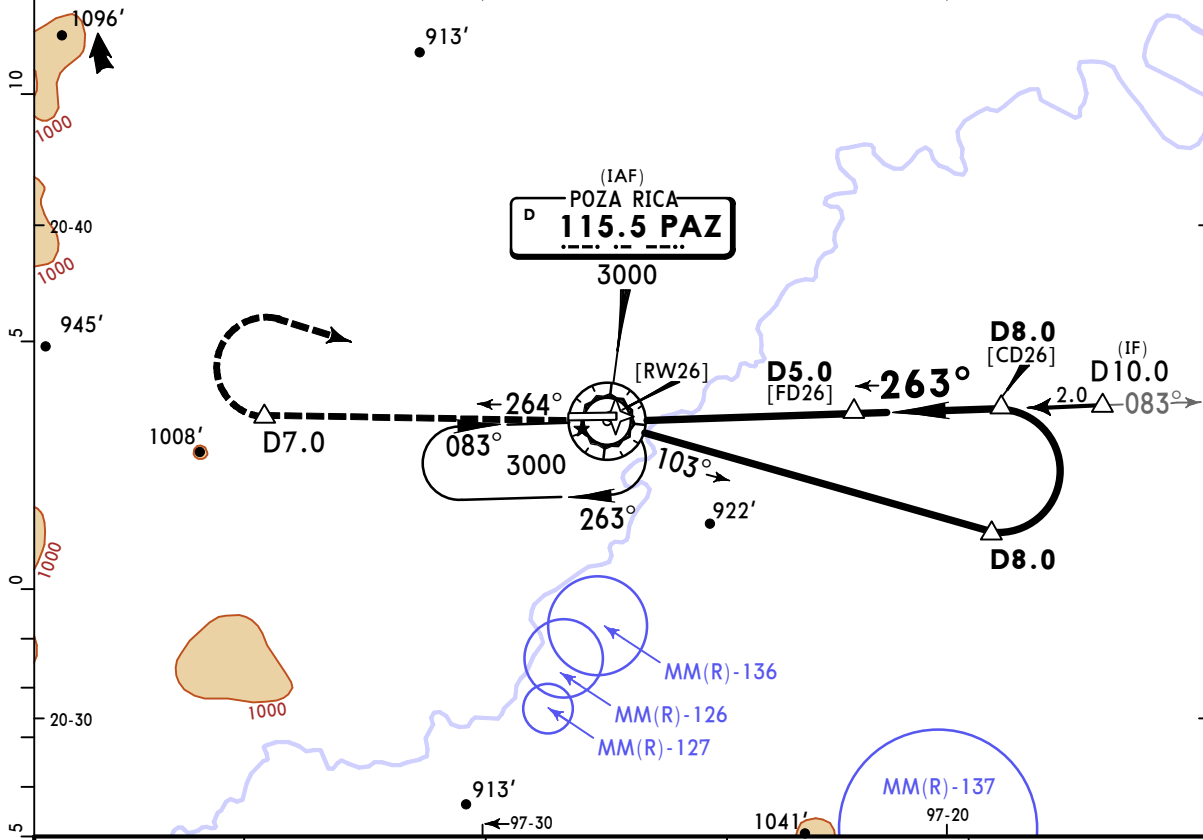
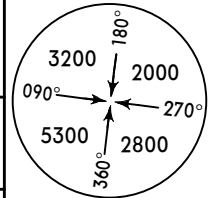
STRAIGHT-IN LANDING RWY 08			CIRCLE-TO-LAND		
MDA(H) 980' (483')			Max Kts	MDA(H)	
A	1		90	1360' (863') - 1	
B	1		120	1360' (863') - 1 1/4	
C	1 1/4		140	1360' (863') - 2 1/2	
D	1 1/2		165	1360' (863') - 2 3/4	

MMPA/PAZ TAJIN

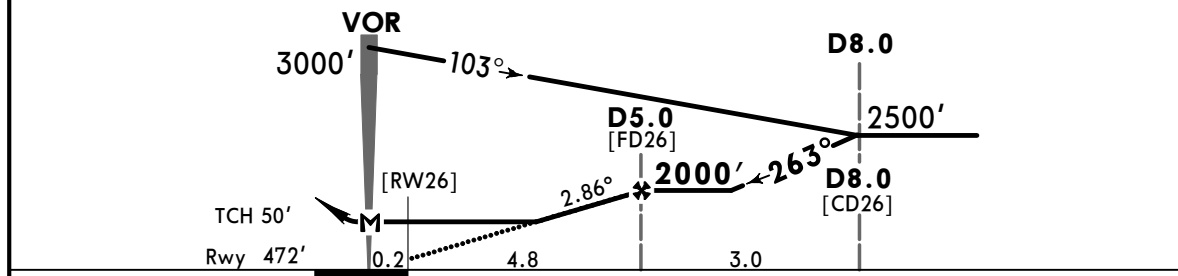
JEPPESSEN
9 JUN 23 **13-4** Eff 15 Jun

POZA RICA, MEXICO VOR DMÉ Rwy 26

*MEXICO Control (Approach)				*POZA RICA Tower	
128.0				118.9	
VOR PAZ 115.5	Final Apch Crs 263°	D5.0 2000' (1528')	MDA(H) 980' (508')	Apt Elev 497' Rwy 472'	
MISSED APCH: Climb outbound on PAZ VOR R-264 to D7.0, turn RIGHT within 10 NM to PAZ VOR to the minimum holding altitude.					
Alt Set: MB (IN on req) Rwy Elev: 17 MB Trans level: FL195 Trans alt: 18500'					
CAUTION: Do not use radio altimeter as reference to determine altitude over the airport due to orographic conditions.					



PAZ DME	2.0	3.0	4.0	5.0
ALTITUDE	1080'	1390'	1690'	2000'



Gnd speed-Kts	70	90	100	120	140	160	PAPI-L	↑ on 115.5 R-264	D7.0
Descent Angle	2.86°	354	455	506	607	809			
MAP at VOR									
FAF to MAP	5.0	4:17	3:20	3:00	2:30	2:09			

STRAIGHT-IN LANDING RWY 26			CIRCLE-TO-LAND		
MDA(H) 980' (508')					
A	1	1½	Max Kts	MDA(H)	
B			90	1360' (863') - 1	
C			120	1360' (863') - 1¼	
D			140	1360' (863') - 2½	
			165	1360' (863') - 2¾	