

General Information

Location: CULIACAN MEX
ICAO/IATA: MMCL / CUL
Lat/Long: N24° 45.9', W107° 28.5'
Elevation: 105 ft

Airport Use: Public
Daylight Savings: Not Observed
UTC Conversion: +7:00 = UTC
Magnetic Variation: 7.0° E

Fuel Types: 100 Octane (LL), Jet A
Customs: Yes
Airport Type: IFR
Landing Fee: No
Control Tower: Yes
Jet Start Unit: No
LLWS Alert: No
Beacon: Yes

Sunrise: 1313 Z
Sunset: 0035 Z

Runway Information

Runway: 03
Length x Width: 7139 ft x 148 ft
Surface Type: asphalt
TDZ-Elev: 97 ft
Lighting: Edge

Runway: 21
Length x Width: 7139 ft x 148 ft
Surface Type: asphalt
TDZ-Elev: 105 ft
Lighting: Edge
Displaced Threshold: 692 ft

Communication Information

ATIS: 127.800
Culiacan Tower: 118.500
Culiacan Approach: 119.750
Mazatlan Control ACC: 128.000 RCO

Monterrey Control ACC: 125.600 RCO

Mazatlan Control ACC: 124.200 RCO

Mazatlan Control ACC: 126.500 RCO

Culiacan Information: 122.300

Mazatlan Control ACC: 124.400 RCO

TMA



10-1B

15 OCT 21

CULIACAN, MEXICO
CULIACAN INTL

*CULIACAN Approach
119.75

SPEED RESTRICTIONS WITHIN MEXICO AIRSPACE

MAXIMUM IAS UNLESS OTHERWISE DEPICTED OR AUTHORIZED BY ATC

- Below 3000' AGL within 10NM of any airport.....200 KTS
- Below 10000' MSL within Mexico Airspace250 KTS
- Below 10000' AGL within 30NM of any airport.....250 KTS

WITHIN CULIACAN TMA

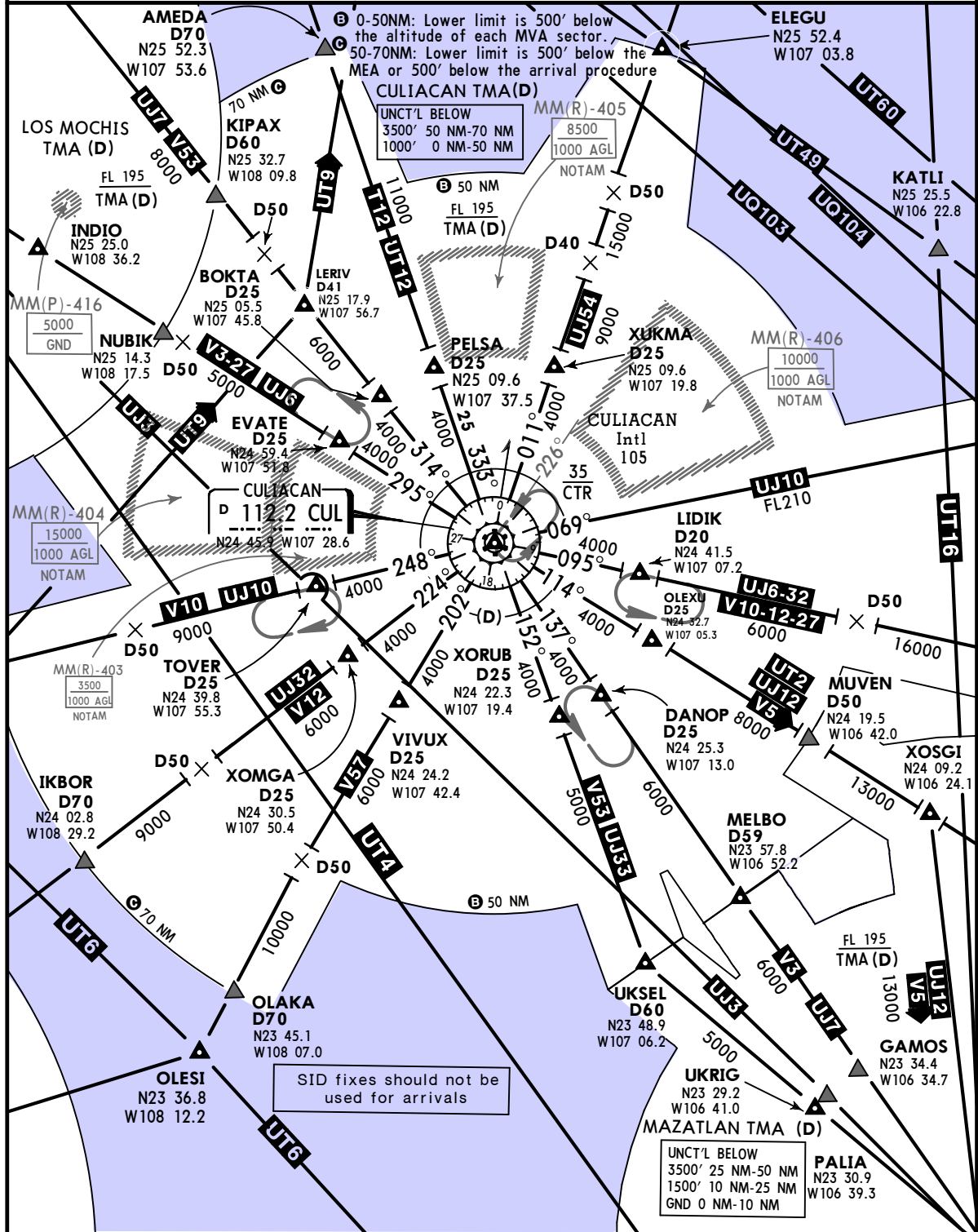
- At or below 3100' MSL within 10NM of CUL VORDME.....200 KTS
- At or below 10100' MSL within 30NM of CUL VORDME.....250 KTS

WITHIN MAZATLAN TMA

- At or below 3000' MSL within 10NM of MZT VORDME.....200 KTS
- At or below 10000' MSL within 30NM of MZT VORDME.....250 KTS

WITHIN LOS MOCHIS TMA

- At or below 3000' MSL within 10NM of LMM VOR.....200 KTS
- At or below 10000' MSL within 30NM of LMM VOR.....250 KTS



SID fixes should not be used for arrivals

UNCT'L BELOW
3500' 25 NM-50 NM
1500' 10 NM-25 NM
GND 0 NM-10 NM

MMCL/CUL CULIACAN INTL



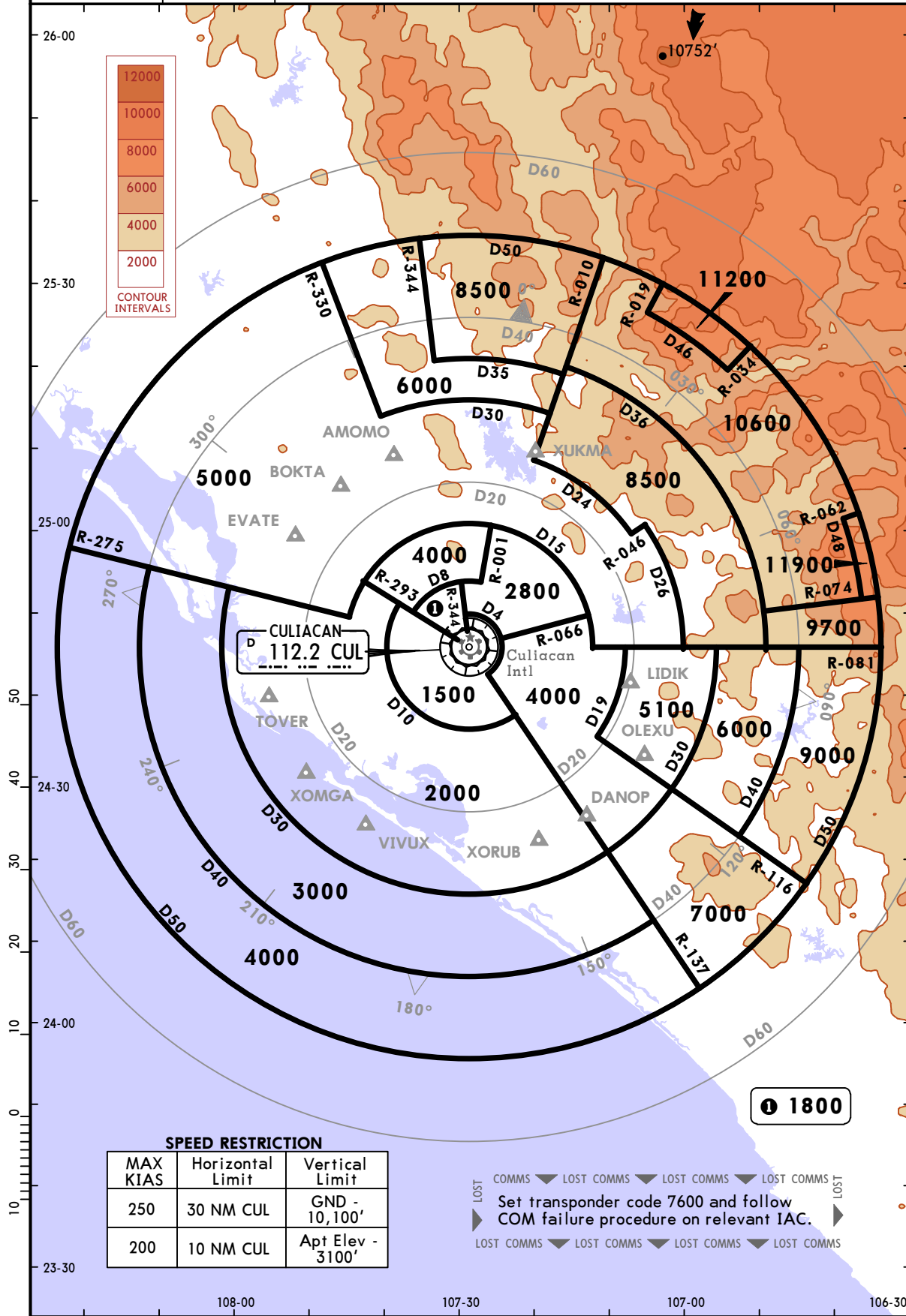
CULIACAN, MEXICO

22 APR 16

10-1R

Eff 28 Apr **RADAR MINIMUM ALTITUDES**

<p>*CULIACAN Approach 119.75</p>	<p>Apt Elev 108'</p>	<p>Alt set: MB (IN on req) Trans level: FL195 Trans alt: 18500' 1. These are the lowest MVAs that can be assigned by the controller in a sector when RADAR control procedures (vectors) are applied, without affecting routes and procedures with lower minimums. 2. All aircraft operating under VFR within this TMA should have transponder mode 3 A/C with 4096 code capabilities. 3. Exclusive use of chart to verify assigned altitudes to identified aircraft.</p>
---	---------------------------------	---



CONTOUR INTERVALS

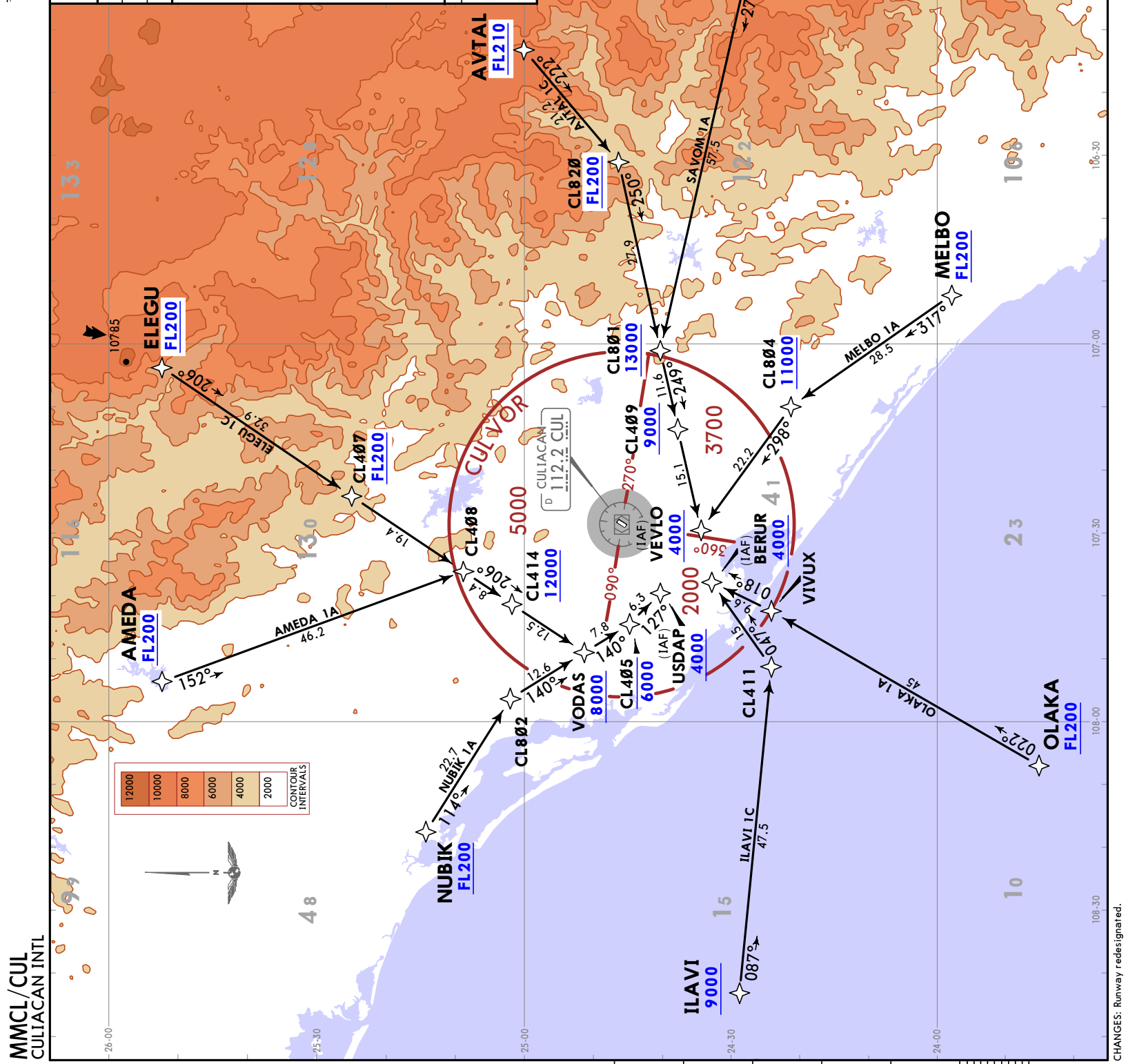
12000
10000
8000
6000
4000
2000

SPEED RESTRICTION

MAX KIAS	Horizontal Limit	Vertical Limit
250	30 NM CUL	GND - 10,100'
200	10 NM CUL	Apt Elev - 3100'

LOST COMMS ◀ LOST COMMS ◀ LOST COMMS ◀ LOST COMMS ▶
 Set transponder code 7600 and follow COM failure procedure on relevant IAC.
 LOST COMMS ◀ LOST COMMS ◀ LOST COMMS ◀ LOST COMMS ▶

*ATIS 127.8	Apt Elev 105
Alt Ser: MB (IN on req)	Trans level: FL195
RNAV 1	GNS required
RADAR required.	
AMEDA 1A (AMEDA1A) [AMED1A] AVTAL 1C (AVTAL1C) [AVTA1C] ELEGU 1C (ELEGU1C) [ELEG1C] ILAVI 1C (ILAVI1C) [ILAV1C] MELBO 1A (MELBO1A) [MELB1A] NUBIK 1A (NUBIK1A) [NUBI1A] OLAKA 1A (OLAKA 1A) [OLAK1A] SAVOM 1A (SAVOM1A) [SAVO1A] RNAV ARRIVALS (RWY 03)	
ROUTING From AMEDA, AVTAL, ELEGU, ILAVI, MELBO, NUBIK, OLAKA or SAVOM continue to the waypoints, altitudes and tracks shown, to the corresponding IAF and continue on approach procedure or according to ATC instructions.	

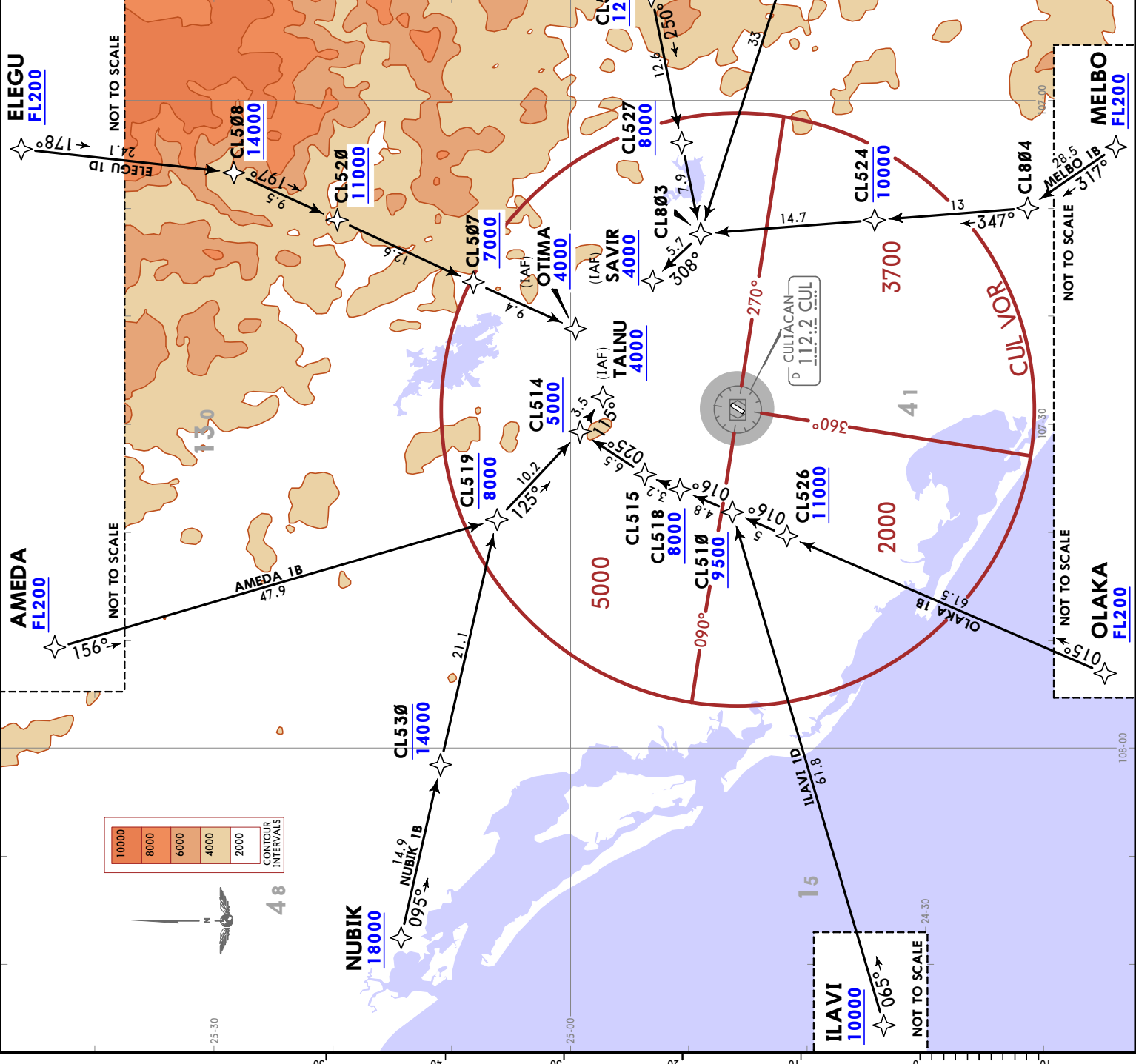


*ATIS 127.8
Apt Elev 105
Alt Set: MB (IN on req) Trans level: FL195
RNAV 1 GNSS required
RADAR required.

AMEDA 1B (AMEDA 1B) [AMED 1B]
AVTAL 1D (AVTAL 1D) [AVTA 1D]
ELEGU 1D (ELEGU 1D) [ELEG 1D]
ILAVI 1D (ILAVI 1D) [ILAV 1D]
MELBO 1B (MELBO 1B) [MELB 1B]
NUBIK 1B (NUBIK 1B) [NUBI 1B]
OLAKA 1B (OLAKA 1B) [OLAK 1B]
SAVOM 1B (SAVOM 1B) [SAVO 1B]

RNAV ARRIVALS (RWY 21)

ROUTING
From AMEDA, AVTAL, ELEGU, ILAVI, MELBO, NUBIK, OLAKA or SAVOM continue to the waypoints, altitudes and tracks shown, to the corresponding IAF and continue on approach procedure or according to ATC instructions.

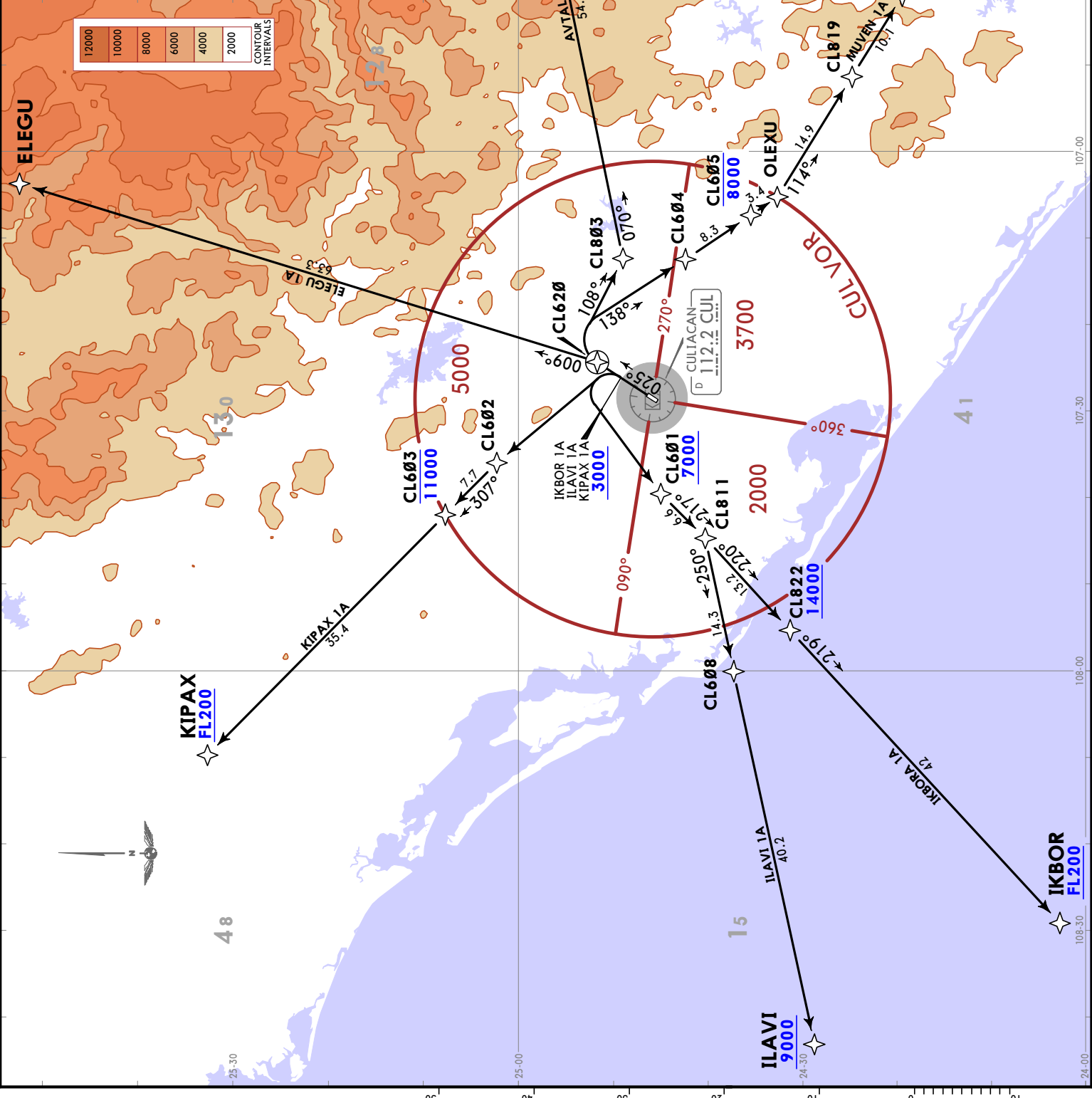


Apt Elev
105
Trans alt: 18500
RNAV 1 GNS5 required
RADAR required.

- AVTAL 1A (AVTAL1A) [AVTA1A]
 - ELEGU 1A (ELEGU1A) [ELEG1A]
 - IKBOR 1A (IKBOR1A) [IKBO1A]
 - ILAVI 1A (ILAVI1A) [ILAV1A]
 - KIPAX 1A (KIPAX1A) [KIPA1A]
 - MUVEN 1A (MUVEN1A) [MUVE1A]
- RNAV DEPARTURES
(RWY 03)

These SIDs require minimum climb gradients:
 AVTAL 1A, ELEGU 1A, IKBOR 1A, ILAVI 1A:
 300 FT/NM (4.9%) until crossing 10000.
 KIPAX 1A: 260 FT/NM (4.3%) until crossing 5000.

Grnd speed-KT	75	100	150	200	250	300
260 FT/NM	325	433	650	867	1083	1300
300 FT/NM	375	500	750	1000	1250	1500



Apt Elev 105
Trans alt: 18500

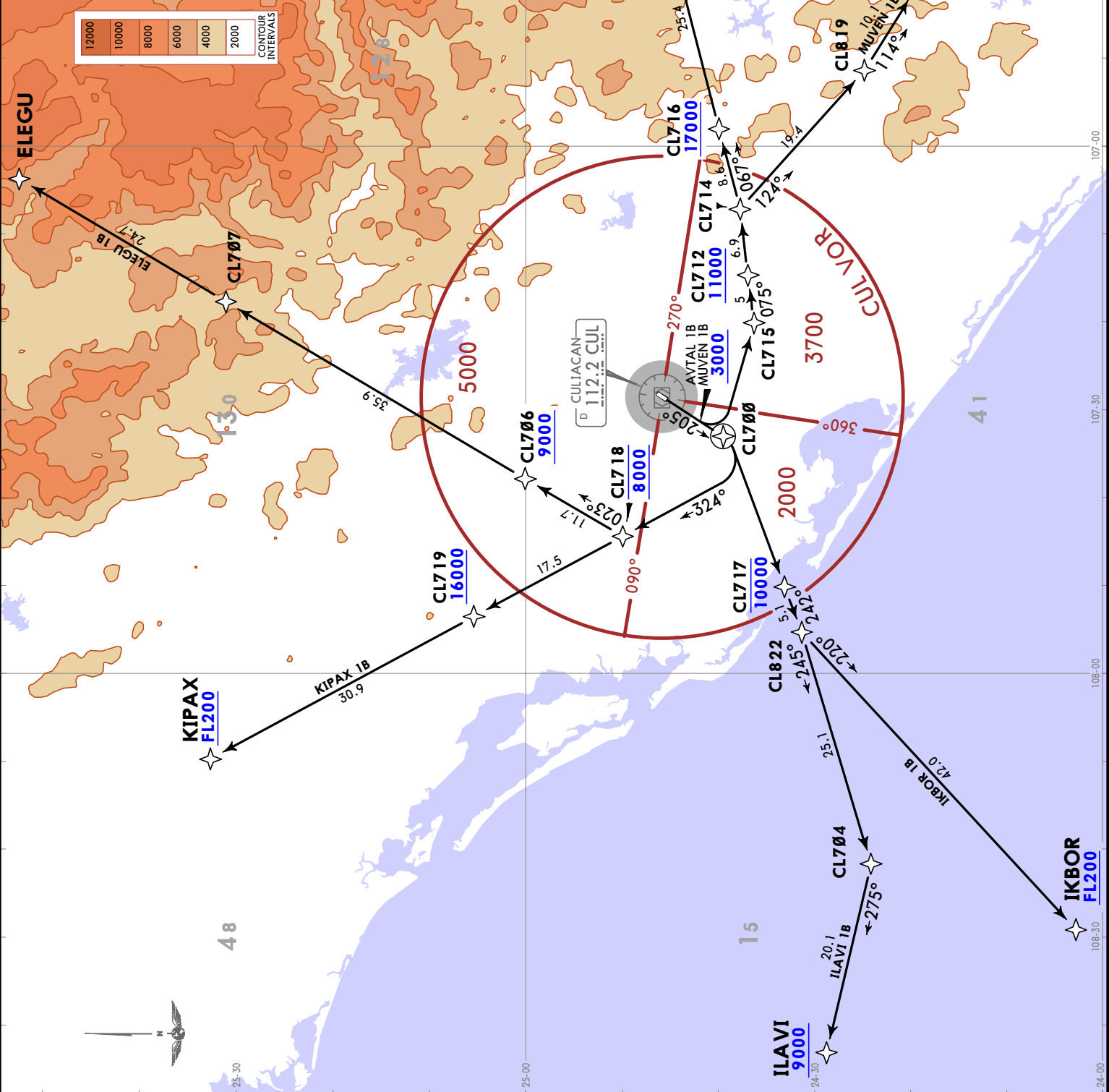
RNAV 1 GNSs required
RADAR required.

AVTAL 1B (AVTAL 1B) [AVTA 1B]
ELEGU 1B (ELEGU 1B) [ELEG 1B]
IKBOR 1B (IKBOR 1B) [IKBO 1B]
ILAVI 1B (ILAVI 1B) [ILAV 1B]
KIPAX 1B (KIPAX 1B) [KIPA 1B]
MUVEN 1B (MUVEN 1B) [MUVE 1B]

RNAV DEPARTURES
(RWY 21)

These SIDs require minimum climb gradients:
AVTAL 1B, MUVEN 1B: 390 FT/NM (6.4%) until crossing 1000.
ELEGU 1B, KIPAX 1B: 320 FT/NM (5.3%) until crossing 8000.

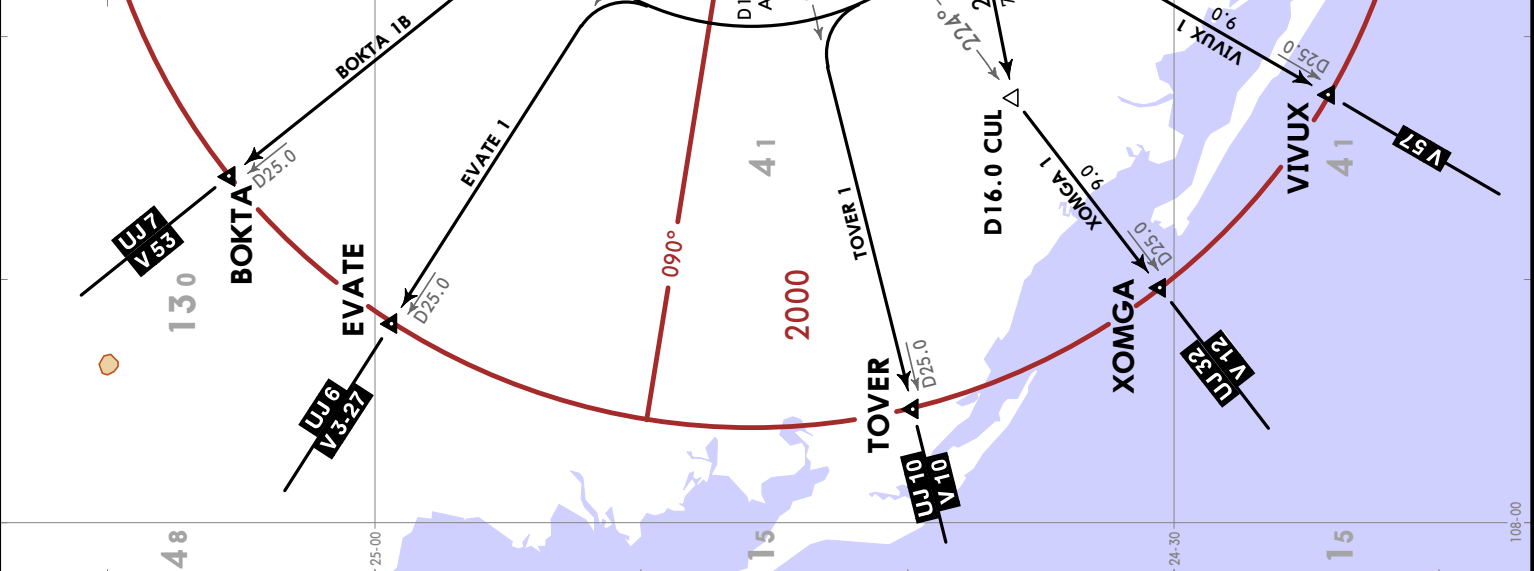
Grnd speed-KT	75	100	150	200	250	300
320 FT/NM	400	533	800	1067	1333	1600
390 FT/NM	488	650	975	1300	1625	1950



Appt Elev 105	Trans alt: 18500
BOKTA 1B (BOKTA 1B) [BOKT1B]	
CULIACAN 1B (CUL1B) [CUL1B]	
DANOP 1 (DANOP1) [DANOP1]	
EVATE 1 (EVATE1) [EVATE1]	
OLEXU 1B (OLEXU1B) [OLEX1B]	
TOVER 1 (TOVER1) [TOVER1]	
VIVUX 1 (VIVUX1) [VIVUX1]	
XOMGA 1 (XOMGA1) [XOMGA1]	
XORUB 1 (XORUB1) [XORUB1]	
DEPARTURES (RWY 21)	

MINIMUM CROSSING ALTITUDE	
CUU	3200
TRC	5500
DGO	3300
MGT	V-10-12-27
MZT	V-5
MZT	V-3
MZT	V-53
MZT	V-57
OLES1	2600
SJD	2000
LAP	V-12
LMM	V-10
CEN	V-3-27
NABAS	V-53
AGU	T-12
	2600

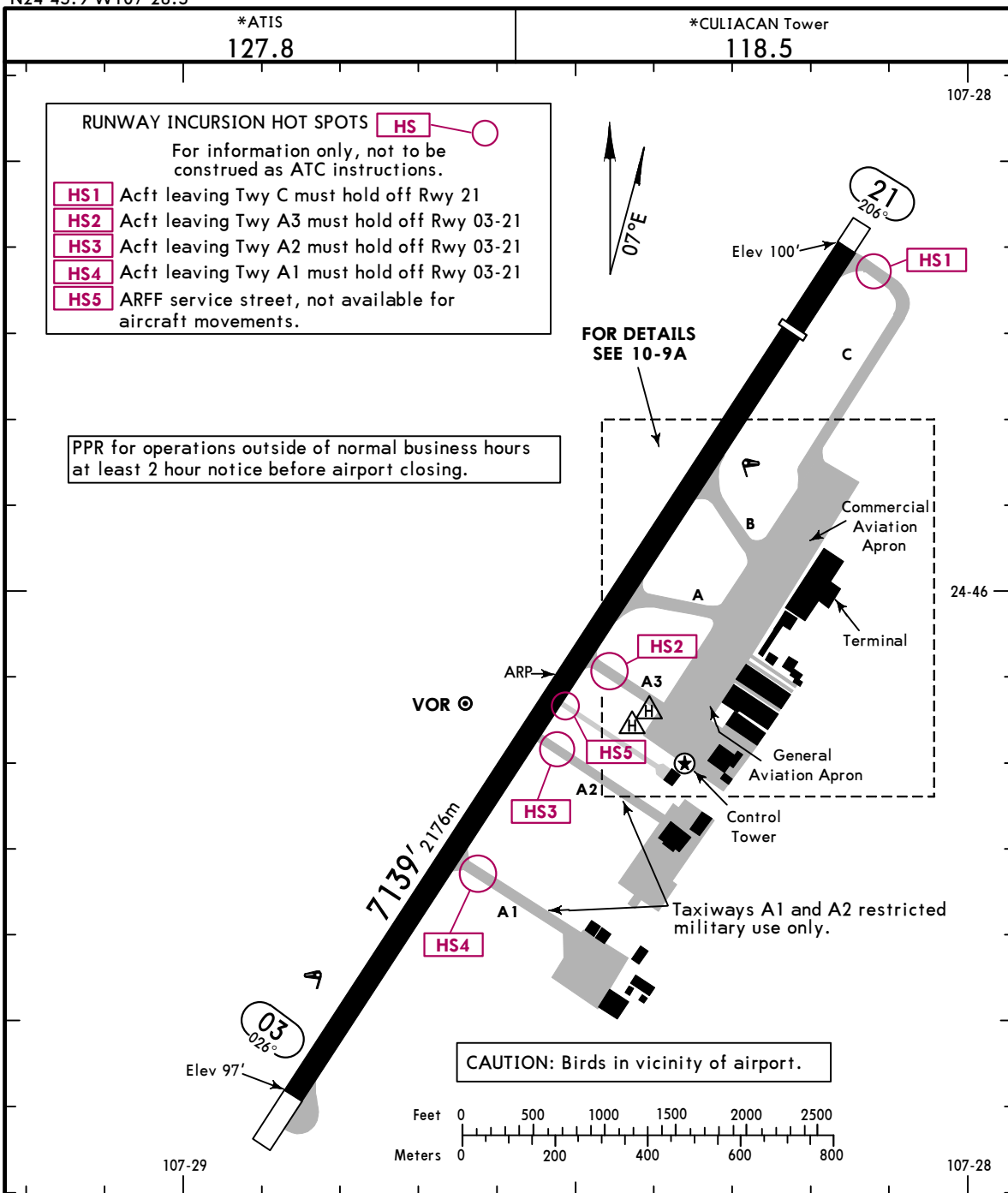
SID	INITIAL CLIMB
BOKTA 1B EVATE 1 TOVER 1	Climb via CUL R205 to D7.0 CUL, then turn RIGHT and proceed on the D10.0 Arc CUL to intercept the corresponding radial from CUL VOR to BOKTA, EVATE or TOVER. Continue on the assigned route or ATC instructions.
CULIACAN 1B	Climb via CUL R205 to D7.0 CUL (or 1400 in case of DME failure), then turn RIGHT within 10 NM to CUL VOR and cross according to the MCA for the assigned route or ATC instructions.
DANOP 1 OLEXU 1B XORUB 1	Climb via CUL R205 to D7.0 CUL, then turn LEFT and proceed on the D10.0 Arc CUL to intercept the corresponding radial from CUL VOR to DANOP, OLEXU or XORUB. Continue on the assigned route or ATC instructions.
VIVUX 1	Climb via CUL R205 to D10.0 CUL, then turn LEFT and proceed on heading 197°, intercept CUL R202 to VIVUX. Continue on the assigned route or ATC instructions.
XOMGA 1	Climb via CUL R205 to D10.0 CUL, then turn RIGHT and proceed on heading 251°, intercept CUL R224 to XOMGA. Continue on the assigned route or ATC instructions.



MMCL/CUL
 Apt Elev **105'**
 N24 45.9 W107 28.5

JEPPESEN
 7 JUN 24 **(10-9)** Eff 13 Jun

CULIACAN, MEXICO
CULIACAN INTL



RWY		HIRL (60m) PAPI-L (angle 3.00°)	USABLE LENGTHS		TAKE-OFF	WIDTH
03	21		Threshold	Landing Beyond		
						148' 45m

① LDA: 6447' 1965m

State	TAKE-OFF & DEPARTURE PROCEDURE			FOR FILING AS ALTERNATE
	Rwy 21	Rwy 03		
			NA Without 400'/NM rate of climb	
		DAY	NIGHT	
1 & 2 Eng	300 - V1 V1600m	500 - V1 V1600m	500 - V1 V1600m	A B C D 1000 - V2 V3200m
3 & 4 Eng				

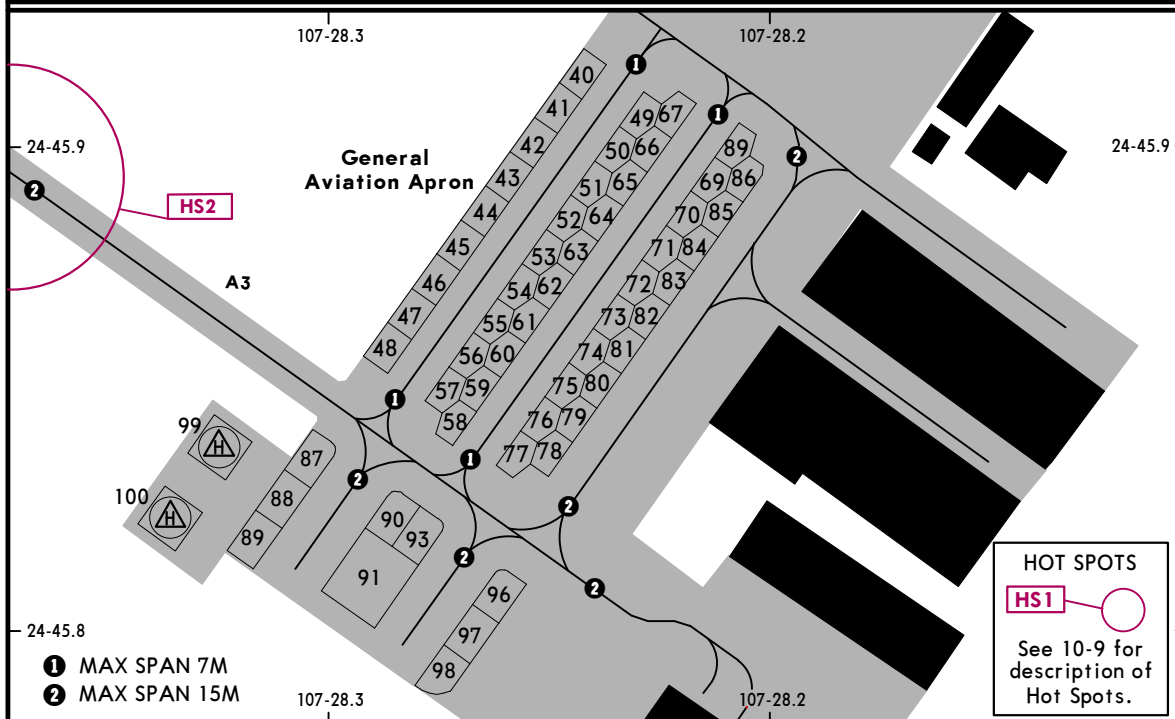
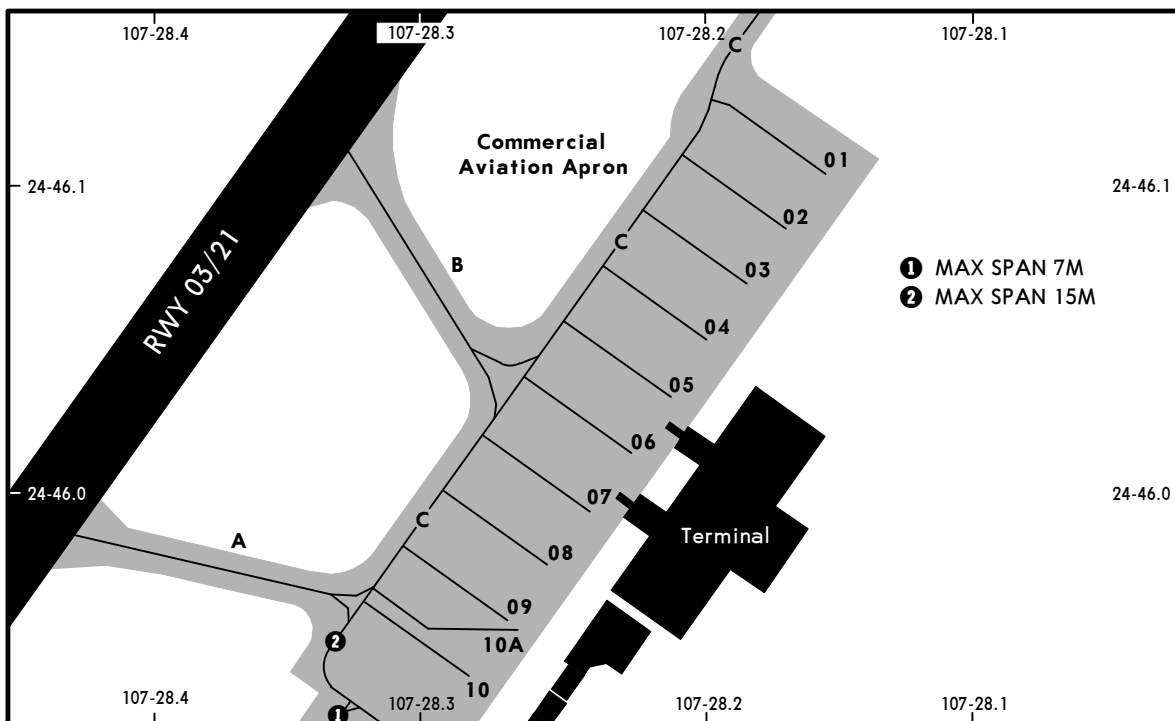
MMCL/CUL

JEPPESEN

CULIACAN, MEXICO

7 JUN 24 10-9A Eff 13 Jun

CULIACAN INTL



PARKING SPOT COORDINATES

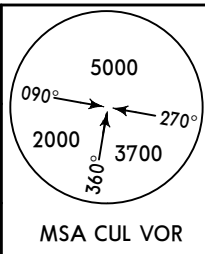
SPOT No.	COORDINATES	SPOT No.	COORDINATES
Commercial Aviation Apron		General Aviation Apron	
01 thru 04	N24 46.1 W107 28.2	40, 41	N24 45.9 W107 28.3
05 thru 07	N24 46.0 W107 28.2	42 thru 48	N24 45.9 W107 28.4
08 thru 10A	N24 46.0 W107 28.3	49 thru 53	N24 45.9 W107 28.3
		54 thru 61	N24 45.9 W107 28.4
		62 thru 76	N24 45.9 W107 28.3
		77	N24 45.9 W107 28.4
		78 thru 86	N24 45.9 W107 28.3
		87	N24 45.9 W107 28.4
		88 thru 98	N24 45.8 W107 28.4
		99	N24 45.9 W107 28.4
		100	N24 45.8 W107 28.4

MMCL/CUL
CULIACAN INTL

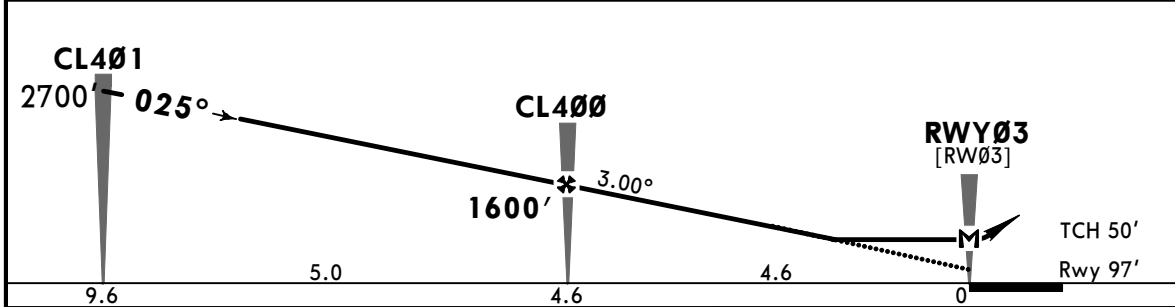
JEPESEN
7 JUN 24 **(12-1)** Eff 13 Jun

CULIACAN, MEXICO
RNP Rwy 03

*ATIS 127.8		*CULIACAN Approach 119.75		*CULIACAN Tower 118.5	
RNAV	Final Apch Crs 025°	CL400 1600' (1503')	LNAV MDA(H) 640' (543')	Apt Elev 105' Rwy 97'	
MISSED APCH: Climb on track 025° to CL620 and proceed to VODAS at minimum holding altitude or according to ATC instruction.					
Alt Set: MB (IN on req) Rwy Elev: 4 MB Trans level: FL 195 Trans alt: 18500' RNP Apch 1. GNSS required. 2. Operative radar.					



DIST to THR	4.6	4.0	3.0	2.0
ALTITUDE	1600'	1420'	1110'	790'



Gnd speed-Kts	70	90	100	120	140	160			
Descent Angle 3.00°	372	478	531	637	743	849			
MAP at RWY03									
FAF to MAP	4.6	3:57	3:04	2:46	2:18	1:58	1:43		

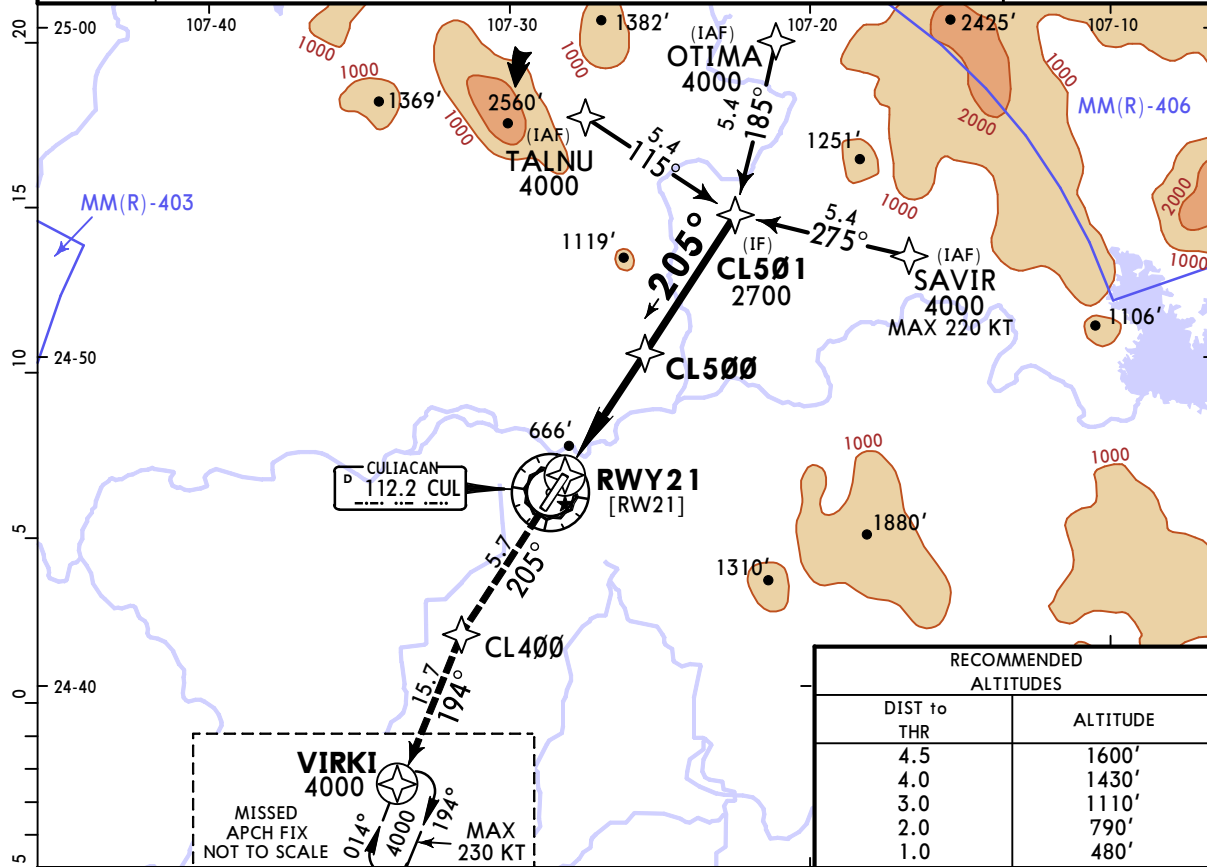
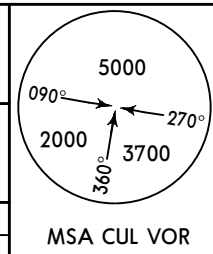
STRAIGHT-IN LANDING RWY 03						CIRCLE-TO-LAND				
LNAV										
MDA(H) 640' (543')										
A	1					Max Kts	90			740' (635') - 1
B						120				
C	1½					140				740' (635') - 1¾
D	1¾					165				740' (635') - 2

MMCL/CUL
CULIACAN INTL

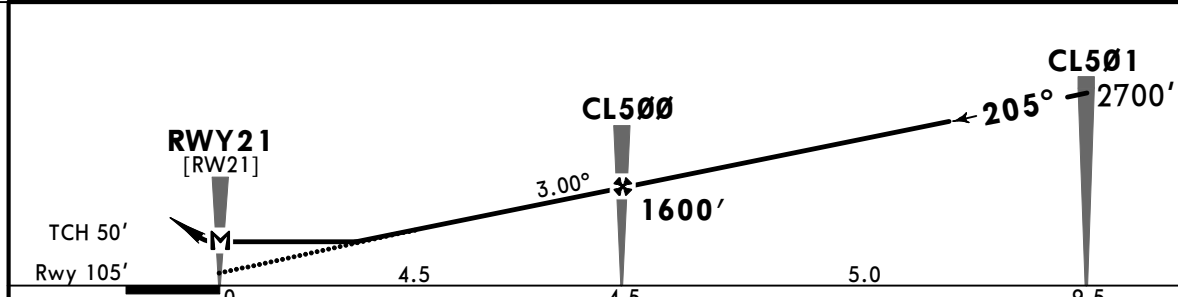
JEPPESEN
7 JUN 24 **(12-2)** Eff 13 Jun

CULIACAN, MEXICO
RNP Rwy 21

*ATIS 127.8		*CULIACAN Approach 119.75			*CULIACAN Tower 118.5	
RNAV	Final Apch Crs 205°	CL500 1600' (1495')	LNVA MDA(H) 640' (535')	Apt Elev 105' Rwy 105'		
MISSED APCH: Climb on track 205° to CL400 and proceed to VIRKI at minimum holding altitude or according to ATC instruction.						
Alt Set: MB (IN on req)		Rwy Elev: 4 MB	Trans level: FL195	Trans alt: 18500'		
RNP Apch 1. GNSS required. 2. Operative radar.						



RECOMMENDED ALTITUDES	
DIST to THR	ALTITUDE
4.5	1600'
4.0	1430'
3.0	1110'
2.0	790'
1.0	480'



Gnd speed-Kts	70	90	100	120	140	160			
Descent Angle 3.00°	372	478	531	637	743	849			
MAP at RWY21									
FAF to MAP	4.5	3:51	3:00	2:42	2:15	1:56	1:41		

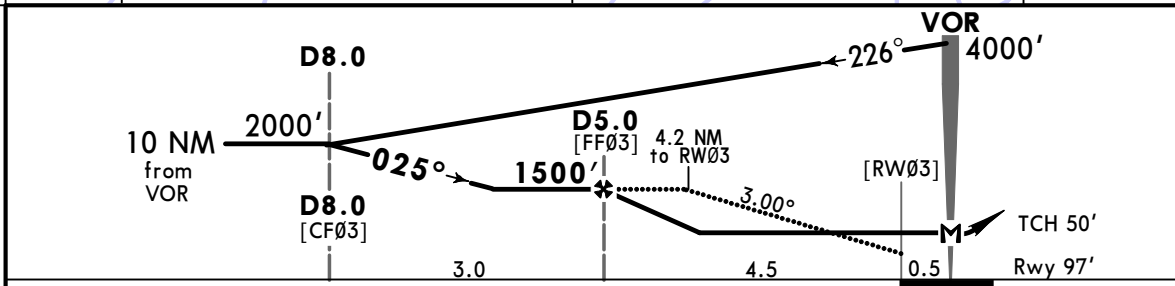
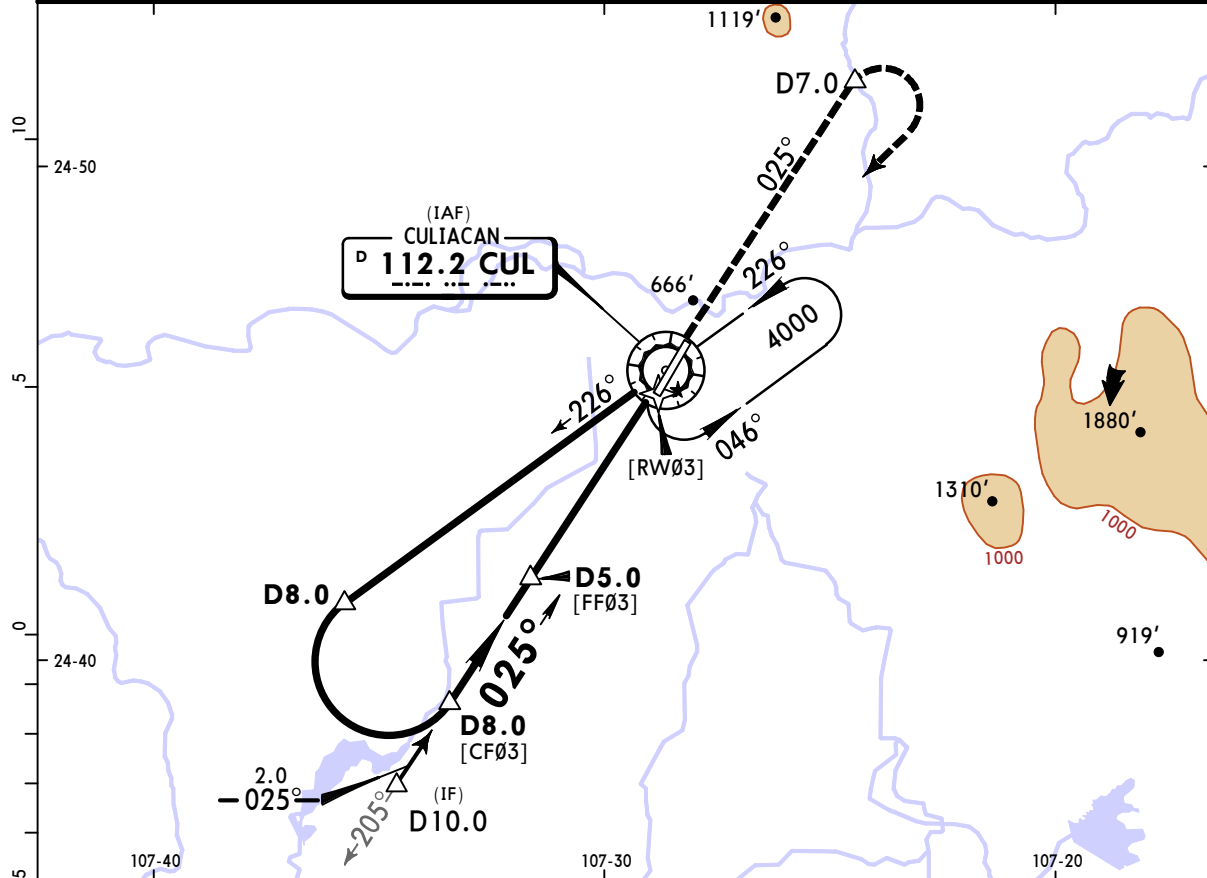
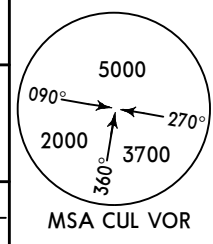
STRAIGHT-IN LANDING RWY21				CIRCLE-TO-LAND	
LNVA				MDA(H)	
MDA(H) 640' (535')				Max Kts	MDA(H)
A	1			90	740' (635') - 1
B				120	
C	1½			140	740' (635') - 1¾
D	1¾			165	740' (635') - 2

MMCL/CUL
CULIACAN INTL

JEPPESEN
7 JUN 24 **(13-1)** Eff 13 Jun

CULIACAN, MEXICO
VOR Z Rwy 03

*ATIS 127.8		*CULIACAN Approach 119.75			*CULIACAN Tower 118.5	
VOR CUL 112.2	Final Apch Crs 025°	D5.0 1500' (1403')	MDA(H) 640' (543')	Apt Elev 105' Rwy 97'		
MISSED APCH: Climb via CUL VOR R-025 to D7.0, then turn RIGHT within 10 NM to CUL VOR at the minimum holding altitude.						
Alt Set: MB (IN on req) Rwy Elev: 4 MB Trans level: FL 195 Trans alt: 18500'						
DME required.						



Gnd speed-Kts	70	90	100	120	140	160	PAPI-L	CUL via 112.2 to D7.0 R-025
Descent Angle 3.00°	372	478	531	637	743	849		
MAP at VOR								

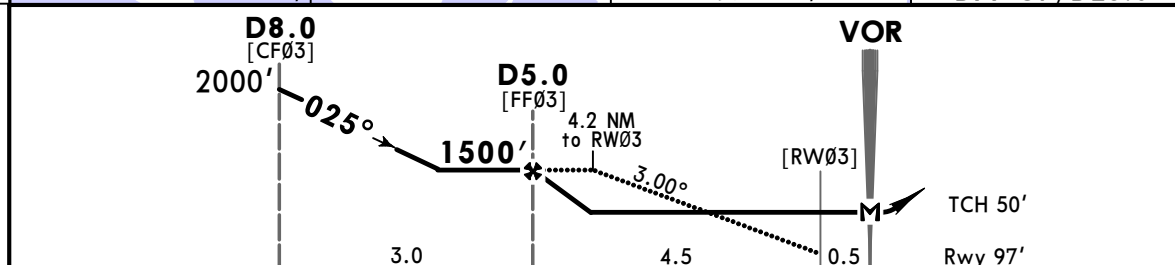
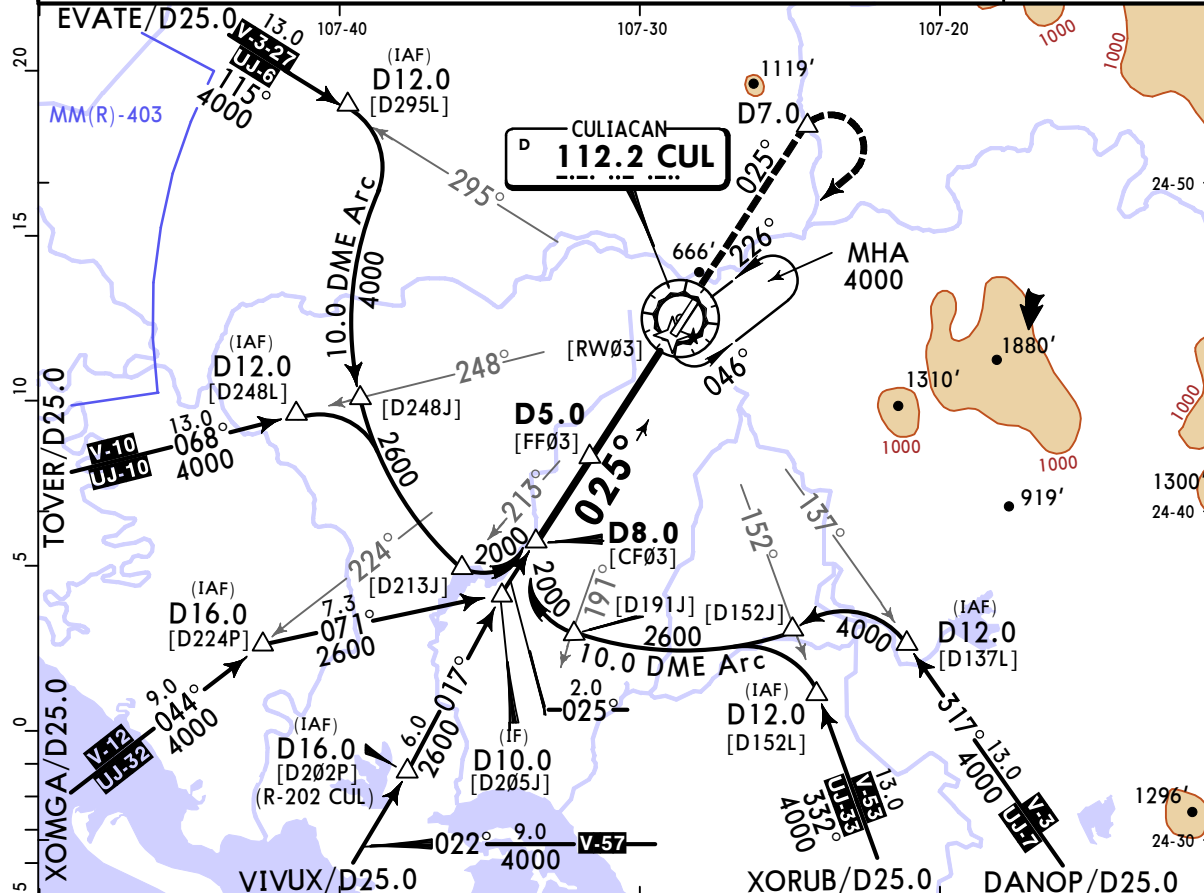
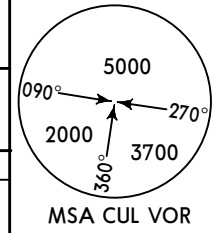
STRAIGHT-IN LANDING RWY03		CIRCLE-TO-LAND	
MDA(H) 640' (543')		Max Kts	MDA(H)
A	1	90	740' (635') - 1
B	1 1/2	120	740' (635') - 1 3/4
C	1 3/4	140	740' (635') - 2
D	1 3/4	165	740' (635') - 2

MMCL/CUL CULIACAN INTL

JEPPESSEN
7 JUN 24 **(13-2)** Eff 13 Jun

CULIACAN, MEXICO VOR Y Rwy 03

*ATIS 127.8		*CULIACAN Approach 119.75		*CULIACAN Tower 118.5	
VOR CUL 112.2	Final Apch Crs 025°	D5.0 1500' (1403')	MDA(H) 640' (543')	Apt Elev 105' Rwy 97'	
MISSED APCH: Climb via CUL VOR R-025 to D7.0, then turn RIGHT within 10 NM to CUL VOR at the minimum holding altitude.					
Alt Set: MB (IN on req) Rwy Elev: 4 MB Trans level: FL 195 Trans alt: 18500'					
1. DME required. 2. In case of CUL DME failure at any point during this procedure maintain last altitude and proceed to the station according to ATC instructions.					



Gnd speed-Kts	70	90	100	120	140	160	PAPI-L	CUL via 112.2 to D7.0 R-025
Descent Angle 3.00°	372	478	531	637	743	849		
MAP at VOR								

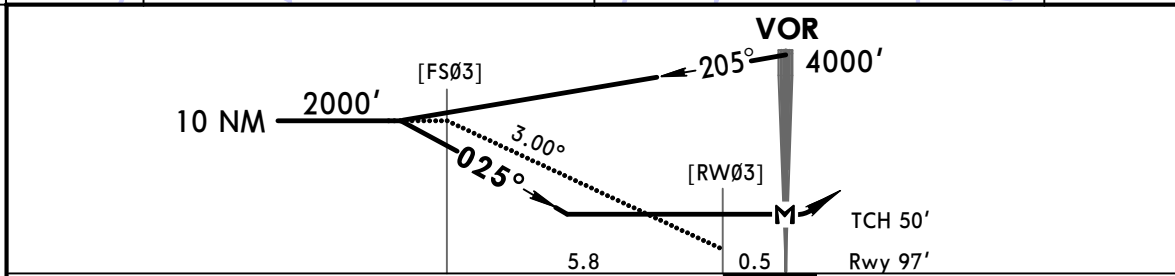
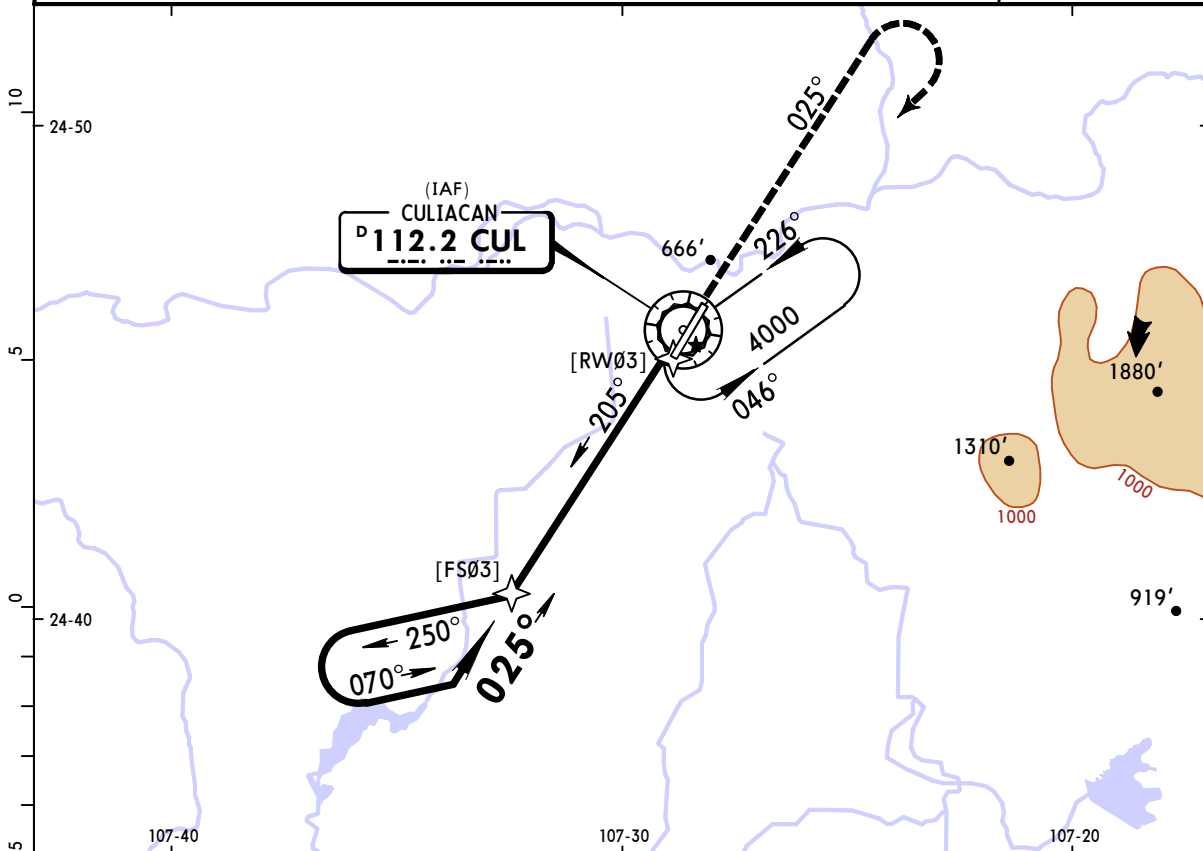
STRAIGHT-IN LANDING RWY03			CIRCLE-TO-LAND		
MDA(H) 640' (543')			MDA(H) _____		
A		90	740' (635') - 1		
B	1	120	740' (635') - 1		
C	1½	140	740' (635') - 1¾		
D	1¾	165	740' (635') - 2		

MMCL/CUL
CULIACAN INTL

JEPESEN
7 JUN 24 (13-3) Eff 13 Jun

CULIACAN, MEXICO
VOR X Rwy 03

*ATIS 127.8		*CULIACAN Approach 119.75			*CULIACAN Tower 118.5		
VOR CUL 112.2	Final Apch Crs 025°	No FAF	MDA(H) 700' (603')	Apt Elev 105' Rwy 97'			
MISSED APCH: Climb via CUL VOR R-025, then turn RIGHT within 10 NM to CUL VOR at the minimum holding altitude.							
MISSED APCH: Max Distance Outbound Track 7 NM							
Gnd speed-Kts	80	100	120	140	160		180
Time	5:15	4:12	3:30	3:00	2:37	2:20	2:06
Alt Set: MB (IN on req)		Rwy Elev: 4 MB	Trans level: FL 195	Trans alt: 18500'		MSA CUL VOR	



Gnd speed-Kts	70	90	100	120	140	160	PAPI-L	↑ CUL via 112.2 R-025
Descent angle	3.00°	372	478	531	637	743		
MAP at VOR								

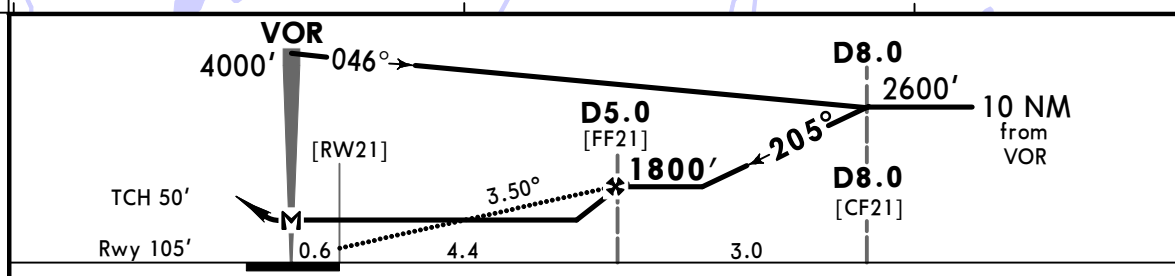
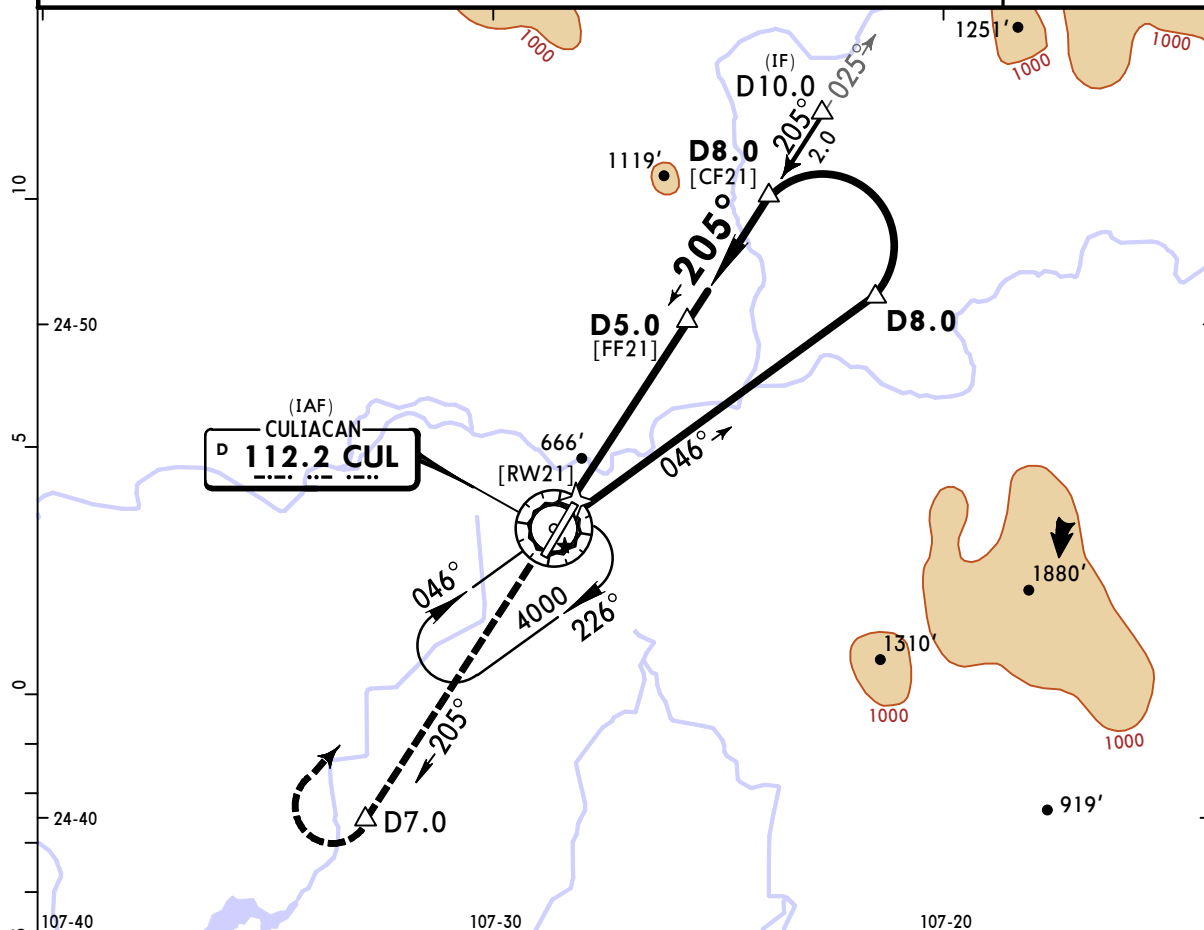
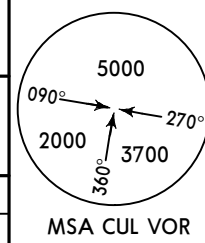
STRAIGHT-IN LANDING RWY 03			CIRCLE-TO-LAND		
MDA(H) 700' (603')			MDA(H)		
A			Max Kts		
B	1		90	740' (635') - 1	
C	1 3/4		140	740' (635') - 1 3/4	
D	2		165	740' (635') - 2	

MMCL/CUL
CULIACAN INTL

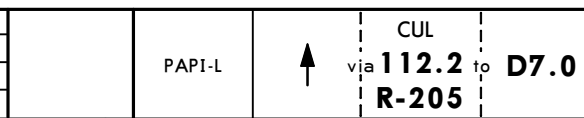
JEPPESEN
7 JUN 24
Eff 13 Jun **13-4**

CULIACAN, MEXICO
VOR Z Rwy 21

*ATIS 127.8		*CULIACAN Approach 119.75		*CULIACAN Tower 118.5	
VOR CUL 112.2	Final Apch Crs 205°	D5.0 1800' (1695')	MDA(H) 640' (535')	Apt Elev 105' Rwy 105'	
MISSED APCH: Climb via CUL VOR R-205 to D7.0, then turn RIGHT within 10 NM to CUL VOR at the minimum holding altitude.					
Alt Set: MB (IN on req)		Rwy Elev: 4 MB	Trans level: FL 195	Trans alt: 18500'	
DME required.					MSA CUL VOR



Gnd speed-Kts	70	90	100	120	140	160
Descent Angle 3.50°	434	557	619	743	867	991
MAP at VOR						



STRAIGHT-IN LANDING RWY21			CIRCLE-TO-LAND		
MDA(H) 640' (535')			MDA(H)		
A		1	Max Kts	90	740' (635') - 1
B			120		740' (635') - 1 3/4
C		1 1/2	140		740' (635') - 2
D		1 3/4	165		

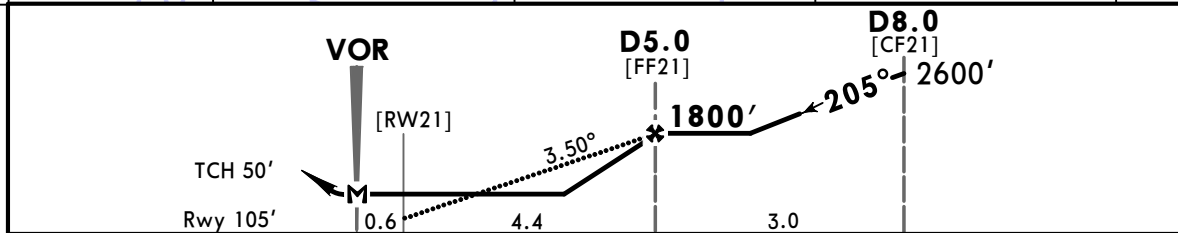
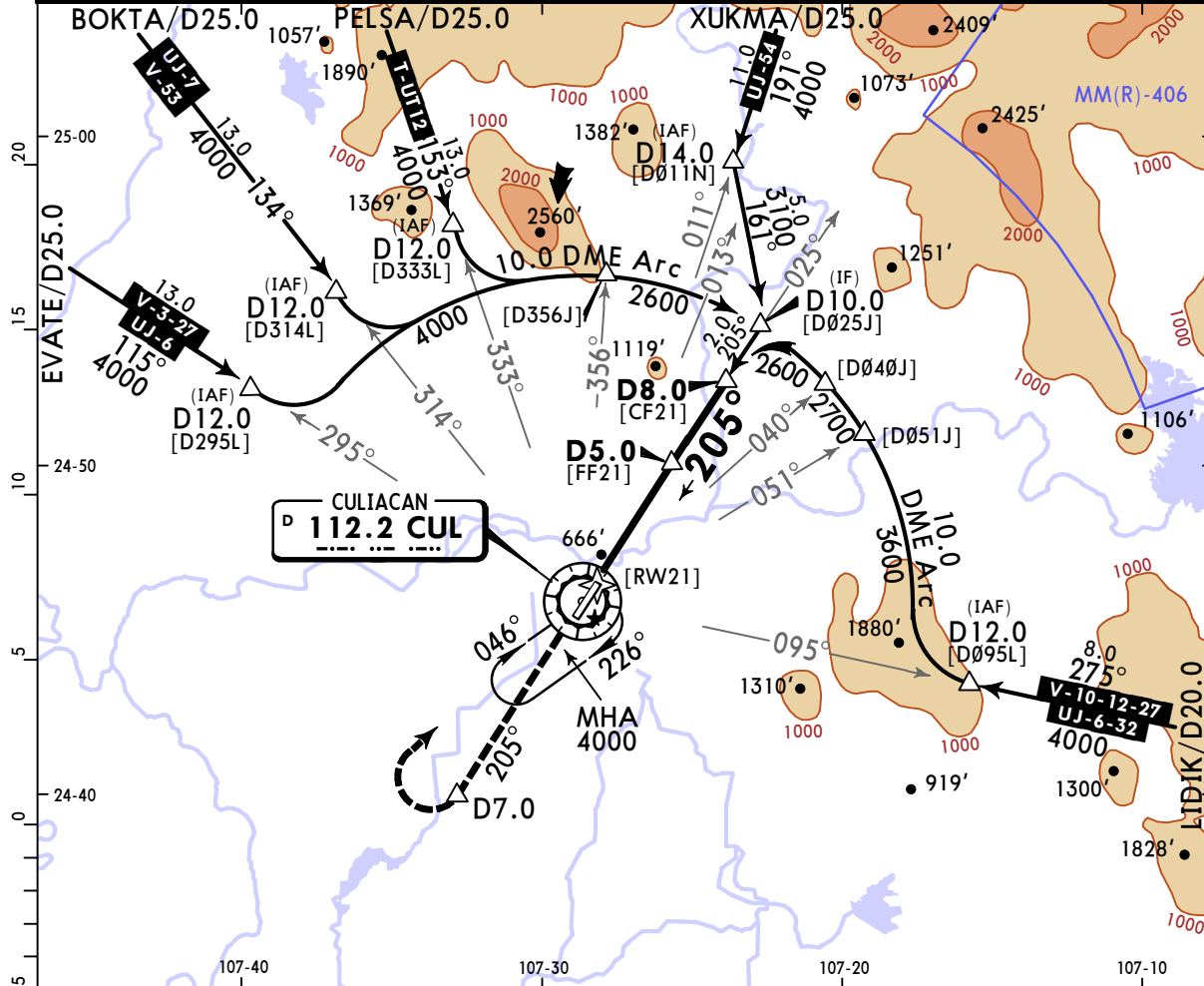
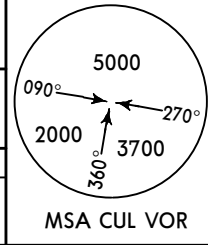
CHANGES: Procedure title, rwy designator, comms, note added, wpt idents.

MMCL/CUL
CULIACAN INTL

JEPPESSEN
7 JUN 24 **(13-5)** Eff 13 Jun

CULIACAN, MEXICO
VOR Y Rwy 21

*ATIS 127.8		*CULIACAN Approach 119.75		*CULIACAN Tower 118.5	
VOR CUL 112.2	Final Apch Crs 205°	D5.0 1800' (1695')	MDA(H) 640' (535')	Apt Elev 105' Rwy 105'	
MISSED APCH: Climb via CUL VOR R-205 to D7.0, then turn RIGHT within 10 NM to CUL VOR at the minimum holding altitude.					
Alt Set: MB (IN on req) Rwy Elev: 4 MB Trans level: FL 195 Trans alt: 18500'					
1. DME required. 2. In case of CUL DME failure at any point during this procedure maintain last altitude and proceed to the station according to ATC instructions.					



Gnd speed-Kts	70	90	100	120	140	160			
Descent Angle	3.50°	434	557	619	743	867	991		
MAP at VOR									

STRAIGHT-IN LANDING RWY21				CIRCLE-TO-LAND			
MDA(H) 640' (535')				MDA(H) _____			
A	1			Max Kts.	_____		
B	1			90	740' (635') - 1		
C	1½			120	740' (635') - 1¾		
D	1¾			140	740' (635') - 2		
				165	740' (635') - 2		