

## General Information

Location: MORELIA MEX  
ICAO/IATA: MMMM / MLM  
Lat/Long: N19° 51.0', W101° 01.5'  
Elevation: 6033 ft

Airport Use: Public  
Daylight Savings: Not Observed  
UTC Conversion: +6:00 = UTC  
Magnetic Variation: 5.0° E

Fuel Types: 100 Octane (LL), Jet A-1  
Customs: Yes  
Airport Type: IFR  
Landing Fee: No  
Control Tower: Yes  
Jet Start Unit: No  
LLWS Alert: No  
Beacon: No

Sunrise: 1213 Z  
Sunset: 0127 Z

## Runway Information

Runway: 05  
Length x Width: 11181 ft x 148 ft  
Surface Type: asphalt  
TDZ-Elev: 6029 ft  
Lighting: Edge

Runway: 23  
Length x Width: 11181 ft x 148 ft  
Surface Type: asphalt  
TDZ-Elev: 6030 ft  
Lighting: Edge, ALS

## Communication Information

Morelia Tower: 118.500  
Morelia Approach: 118.500  
Morelia Information: 122.300 AFIS

TMA

JEPPESSEN

7 JUL 23

10-1B

# MORELIA, MEXICO

GEN FRANCISCO J MUJICA INTL

MORELIA Approach  
118.5

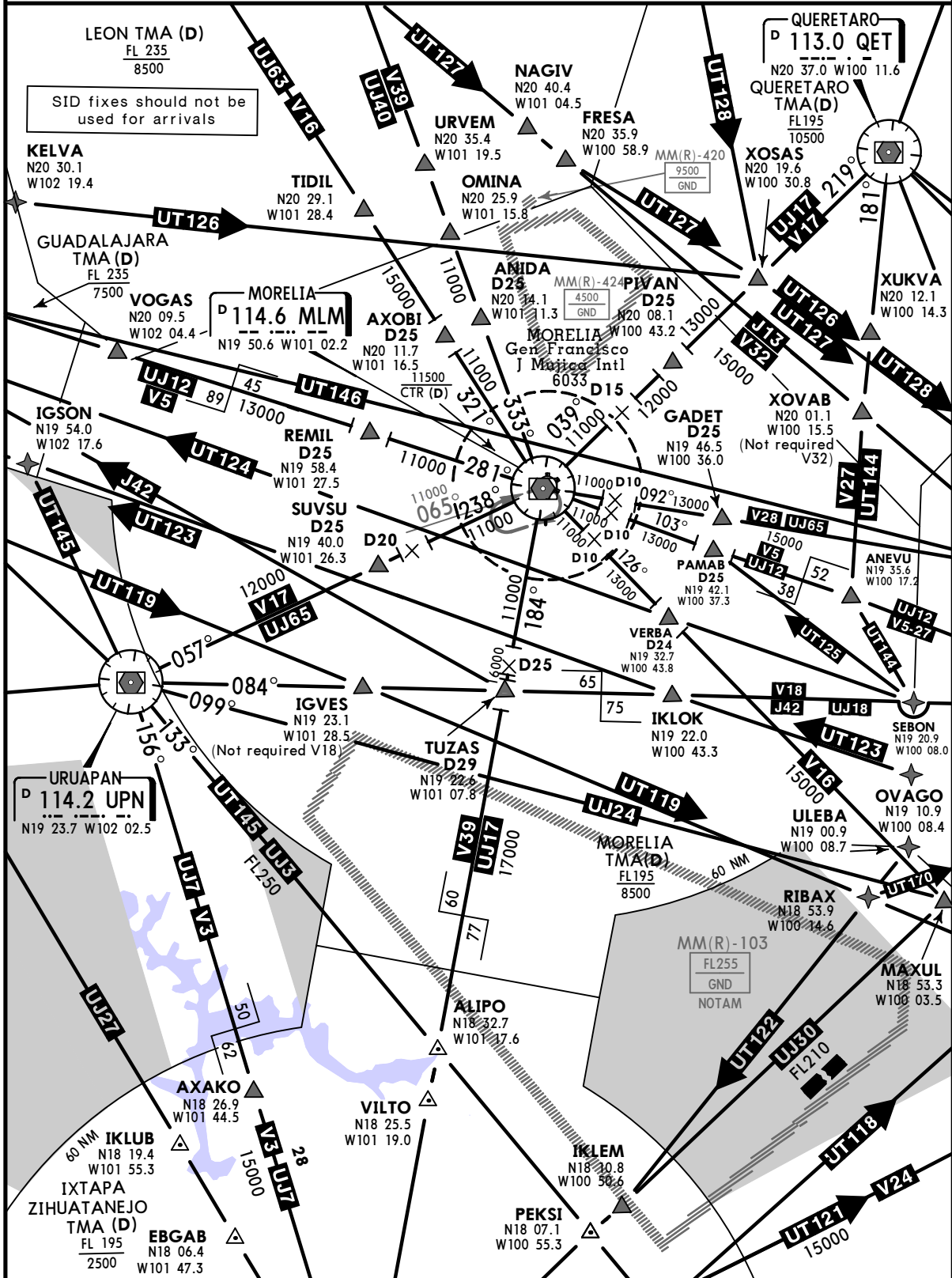
### SPEED RESTRICTIONS WITHIN MEXICO AIRSPACE

Maximum IAS unless otherwise depicted or authorized by ATC

- Below 3000' AGL within 10NM of any airport.....200 KTS
- Below 10000' MSL within Mexico Airspace.....250 KTS
- Below 10000' AGL within 30NM of any airport.....250 KTS

### WITHIN MORELIA TMA

- At or below 9600' MSL within 10NM of MLM VORDME.....200 KTS
- At or below 16000' MSL within 30NM of MLM VORDME.....250 KTS



Apt Elev  
 6033

Trans alt: 18500

**ANIDA 4 (ANIDA4) [ANIDA4]**  
**AXOBI 3A (AXOBI3A) [AXOBI3A]**  
**GADET 4 (GADET4) [GADET4]**  
**MORELIA 5A (MLM5A) [MLM5A]**  
**PAMAB 3 (PAMAB3) [PAMAB3]**  
**PIVAN 4 (PIVAN4) [PIVAN4]**  
**VERBA 5 (VERBA5) [VERBA5]**

**DEPARTURES (RWY 05)**

MINIMUM CROSSING ALTITUDE	
GET V-17	7000
PTJ V-28	9500
TLC V-5	9500
MAXUL V-16	10000
ZIH V-39	6700
UPN V-17	8500
GDL V-5	7700
AGU V-16	8000
BJX V-39	6700

These SIDs require minimum climb gradients:

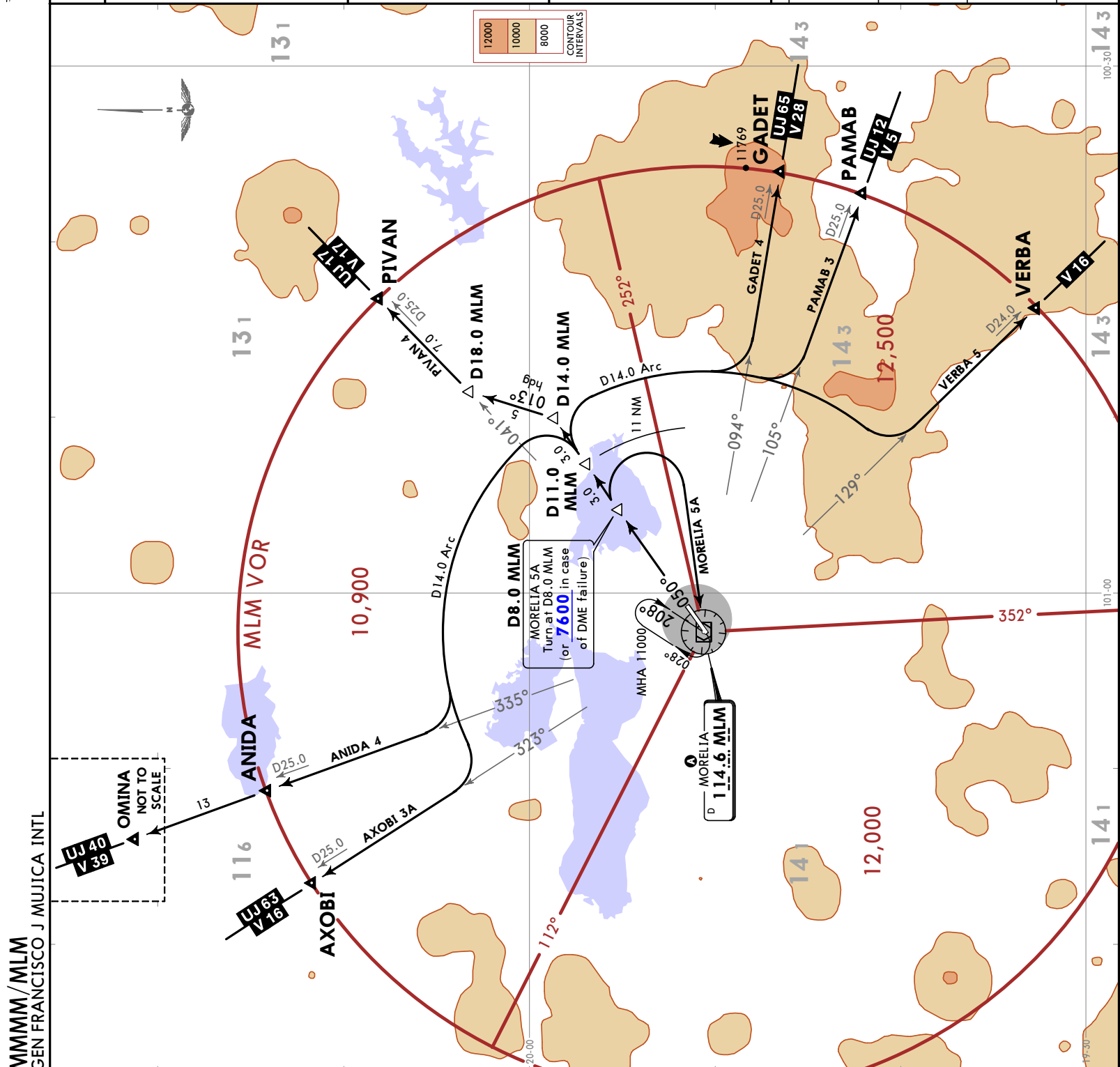
ANIDA 4, AXOBI 3A and PIVAN 4:  
 310 FT/NM (5.1%) to 10000.

GADET 4, PAMAB 3 and VERBA 5:  
 280 FT/NM (4.6%) to 14000.

MORELIA 5A: 240 FT/NM (3.94%) to 10000.

Gnd speed-KT	75	100	150	200	250	300
240 FT/NM	300	400	600	800	1000	1200
280 FT/NM	350	467	700	933	1167	1400
310 FT/NM	388	517	775	1033	1292	1550

SID	INITIAL CLIMB
ANIDA 4 AXOBI 3A	Climb via MLM R050 to D11.0 MLM, turn LEFT and proceed on the D14.0 Arc MLM to intercept the corresponding radial from MLM VOR to AXOBI or ANIDA. Continue on assigned route or ATC instructions.
GADET 4 PAMAB 3 VERBA 5	Climb via MLM R050 to D11.0 MLM, turn RIGHT and proceed on the D14.0 Arc MLM to intercept the corresponding radial from MLM VOR to GADET, PAMAB or VERBA. Continue on assigned route or ATC instructions.
MORELIA 5A	Climb via MLM R050 to D8.0 MLM (or 7600 in case of DME failure), turn RIGHT within 11 NM to MLM VOR. Depart MLM VOR according to the MCA for the assigned route or ATC instructions.
PIVAN 4	Climb via MLM R050 to D14.0 MLM, turn LEFT heading 013° to intercept MLM R041 to PIVAN. Continue on assigned route or ATC instructions.



**JEPPESSEN**  
15 MAR 24  
10-3A Eff 21 Mar

**MMMM/MLM**  
GEN FRANCISCO J MUJICA INTL

**MORELIA, MEXICO**

**SID**

Trans alt: 18500

Apt Elev  
6033

**AXOBI 3B (AXOBI3B) [AXOBI3B]**  
**MORELIA 5B (MLM5B) [MLM5B]**  
**REMIL 4 (REMIL4) [REMIL4]**  
**SUVSU 4 (SUVSU4) [SUVSU4]**  
**TUZAS 4 (TUZAS4) [TUZAS4]**

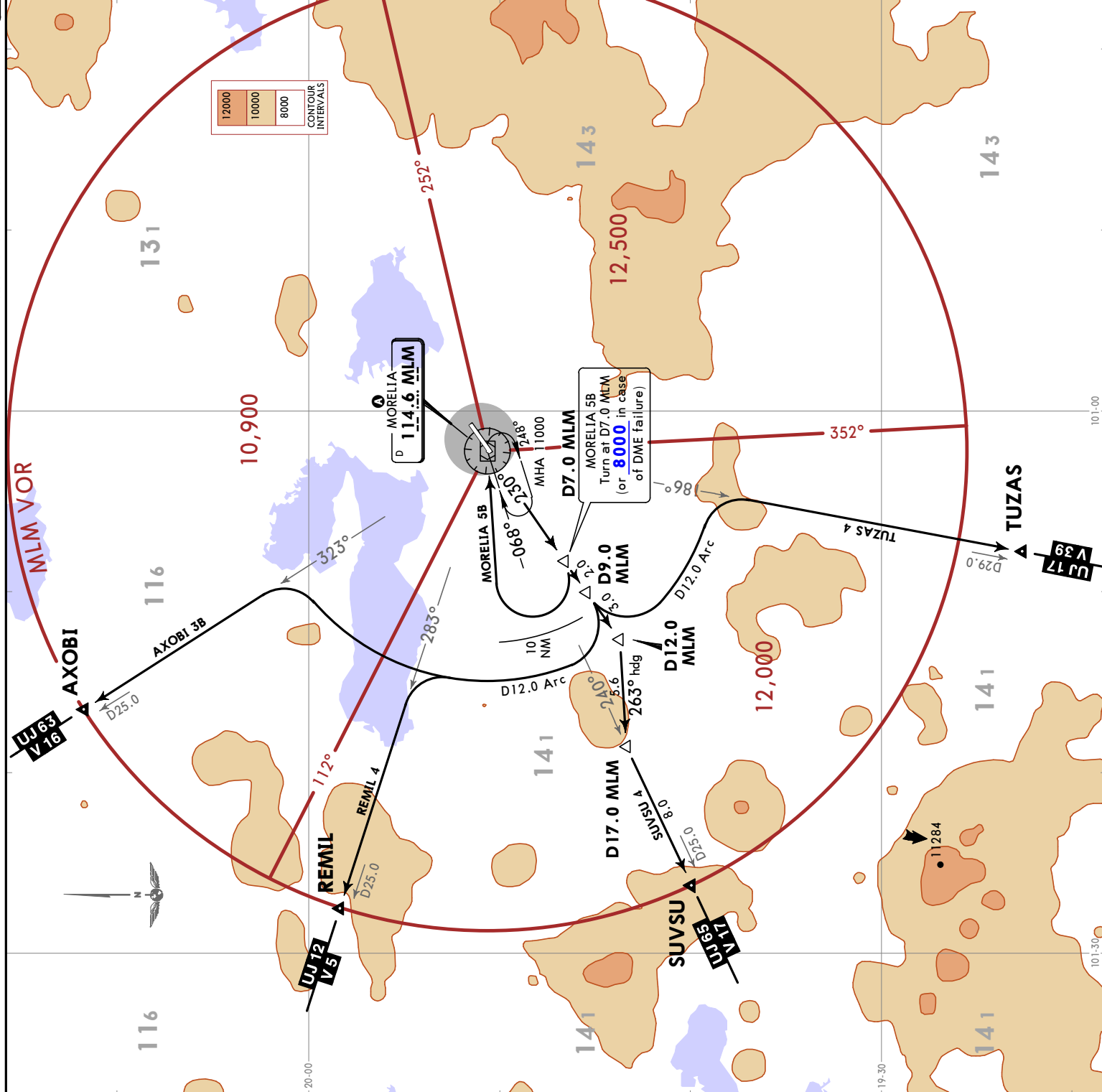
**DEPARTURES  
(RWY 23)**

MINIMUM CROSSING ALTITUDE	
GET V-17	7000
PTJ V-28	9500
TLC V-5	9500
MAXUL V-16	10000
ZIH V-39	6700
UPN V-17	8500
GDL V-5	7700
AGU V-16	8000
BJX V-39	6700

These SIDs require a minimum climb gradient of 280 FT/NM (4.6%) to 11000.

Gnd speed-KT	75	100	150	200	250	300
280 FT/NM	350	467	700	933	1167	1400

SID	INITIAL CLIMB
<b>AXOBI 3B REMIL 4</b>	Climb via MLM R230 to D9.0 MLM, turn RIGHT and proceed on the D12.0 Arc MLM to intercept the corresponding radial from MLM VOR to REMIL or AXOBI. Continue on assigned route or ATC instructions.
<b>MORELIA 5B</b>	Climb via MLM R230 to D7.0 MLM (or 8000 in case of DME failure), turn RIGHT within 10 NM to MLM VOR. Depart MLM VOR according to the MCA for the assigned route or ATC instructions.
<b>SUVSU 4</b>	Climb via MLM R230 to D12.0 MLM, turn RIGHT heading 263° to intercept MLM R240 to SUVSU. Continue on assigned route or ATC instructions.
<b>TUZAS 4</b>	Climb via MLM R230 to D9.0 MLM, turn LEFT and proceed on the D12.0 Arc MLM to intercept the corresponding radial from MLM VOR to TUZAS. Continue on assigned route or ATC instructions.



MMMM/MLM

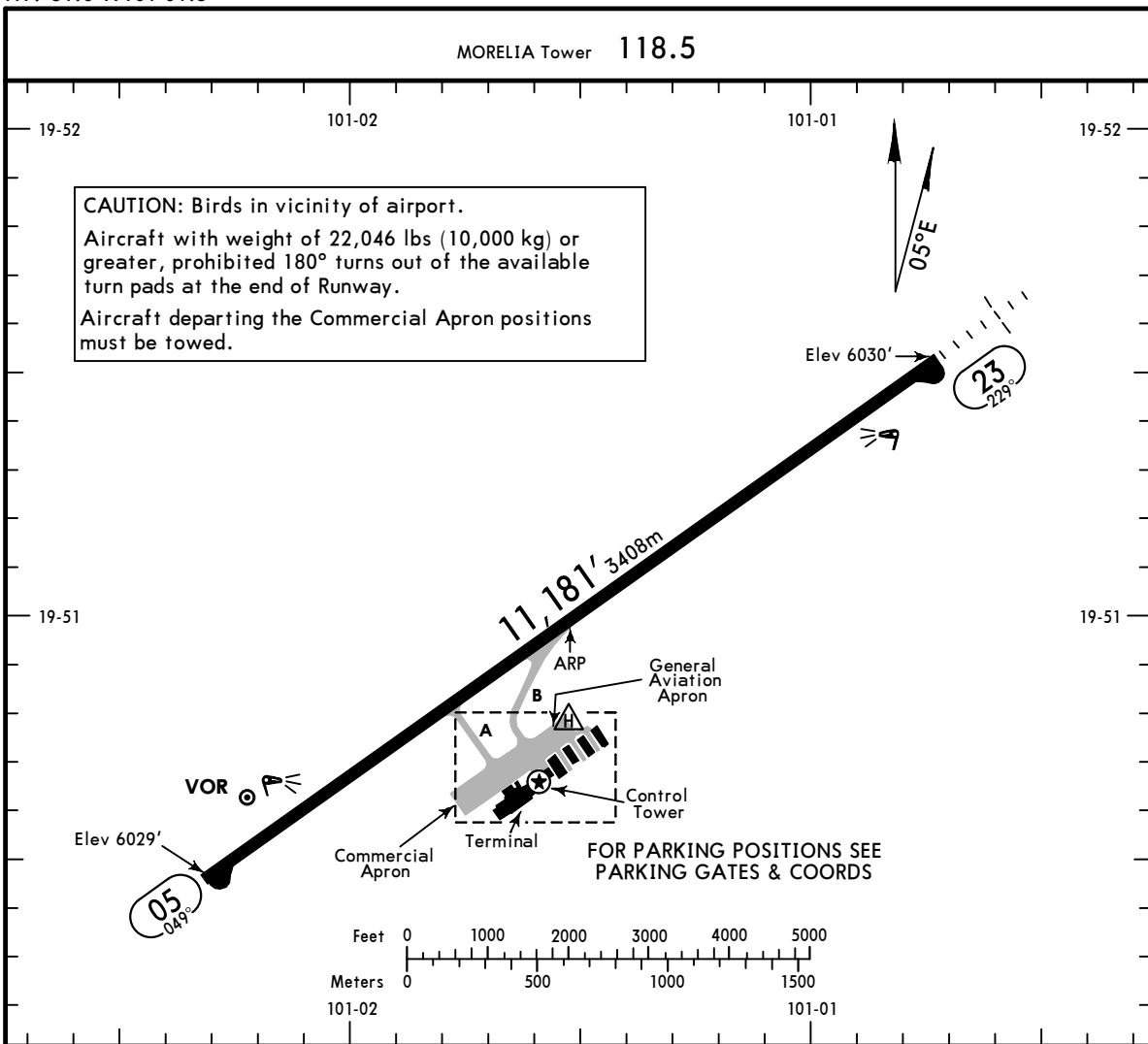
Apt Elev **6033'**  
N19 51.0 W101 01.5

**JEPPESEN**

15 MAR 24  
Eff 21 Mar **10-9**

**MORELIA, MEXICO**

GEN FRANCISCO J MUJICA INTL



ADDITIONAL RUNWAY INFORMATION

RWY		USABLE LENGTHS			WIDTH
		Threshold	Glide Slope	TAKE-OFF	
05	RL PAPI-L (angle 3.0°)				148'
23	RL ① SALS PAPI-L (angle 3.0°)				45m

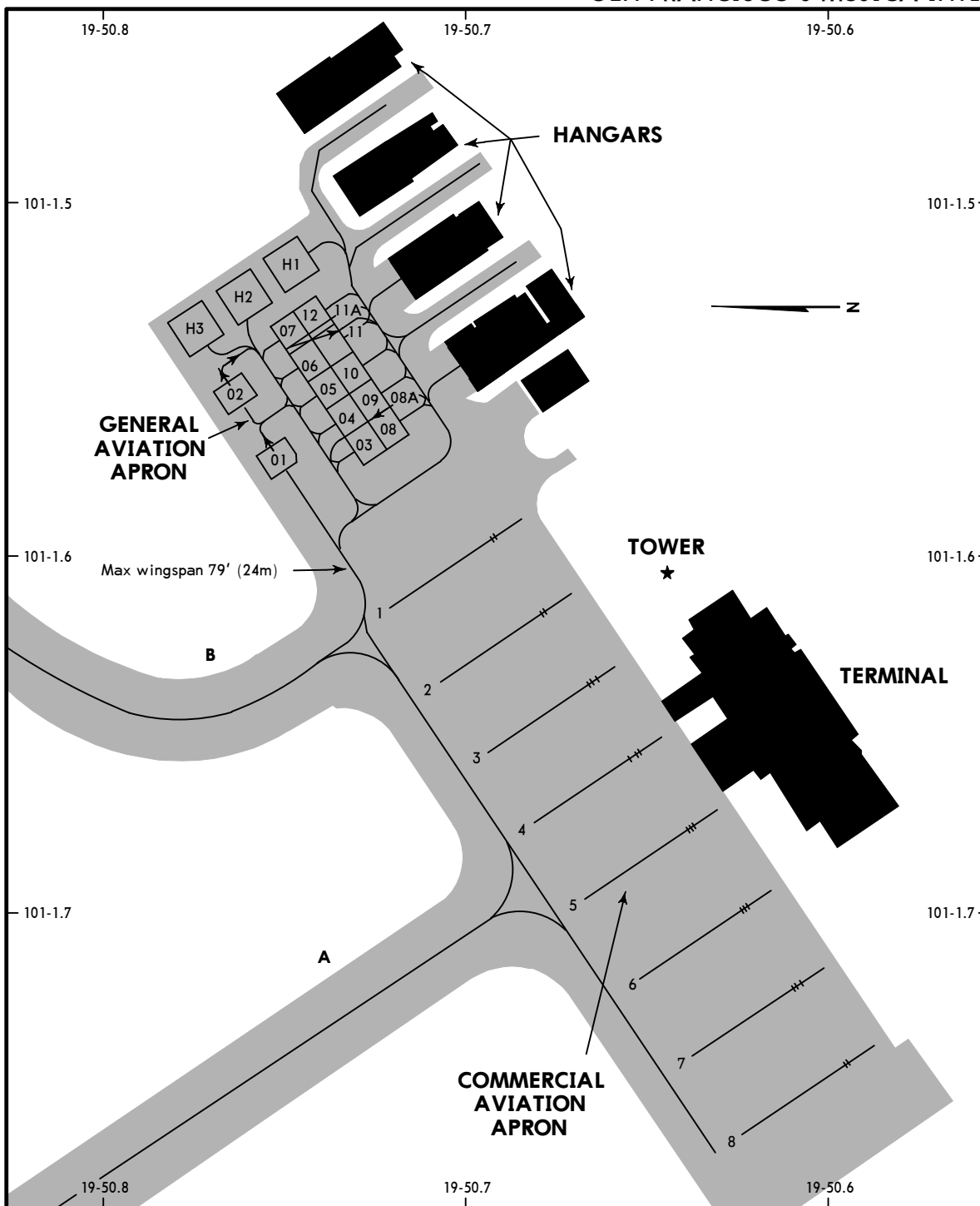
① length 420m

State	TAKE-OFF		FOR FILING AS ALTERNATE
	Rwy 05	Rwy 23	
1 & 2 Eng	500'- V1 V1600m	1000'- V1 V1600m	A B C D 2000'- V3 V4800m
3 & 4 Eng	500'- V1/2 V800m		

MMMM/MLM

JEPESEN  
15 MAR 24  
Eff 21 Mar (10-9A)

MORELIA, MEXICO  
GEN FRANCISCO J MUJICA INTL



COMMERCIAL AVIATION PARKING SPOT COORDINATES			GENERAL AVIATION PARKING SPOT COORDINATES		
SPOT No.	COORDINATES	CAPACITY	SPOT No.	COORDINATES	CAPACITY
1 thru 3	N19 50.7 W101 01.6	A-321-200	1, 2	N19 50.8 W101 01.6	C210
4	N19 50.7 W101 01.6	A-319-200	3, 4	N19 50.7 W101 01.6	C210
5	N19 50.7 W101 01.7	B-757-200	5	N19 50.8 W101 01.6	C210
6	N19 50.6 W101 01.7	B-757-200	6, 7	N19 50.8 W101 01.5	C210
7	N19 50.6 W101 01.7	A-321-200	8	N19 50.7 W101 01.6	C210
8	N19 50.6 W101 01.7	E-175	8A	N19 50.7 W101 01.6	GLF4
			9	N19 50.7 W101 01.6	C210
			10, 11	N19 50.7 W101 01.5	C210
			11A	N19 50.8 W101 01.5	GLF4
			12	N19 50.8 W101 01.5	C210

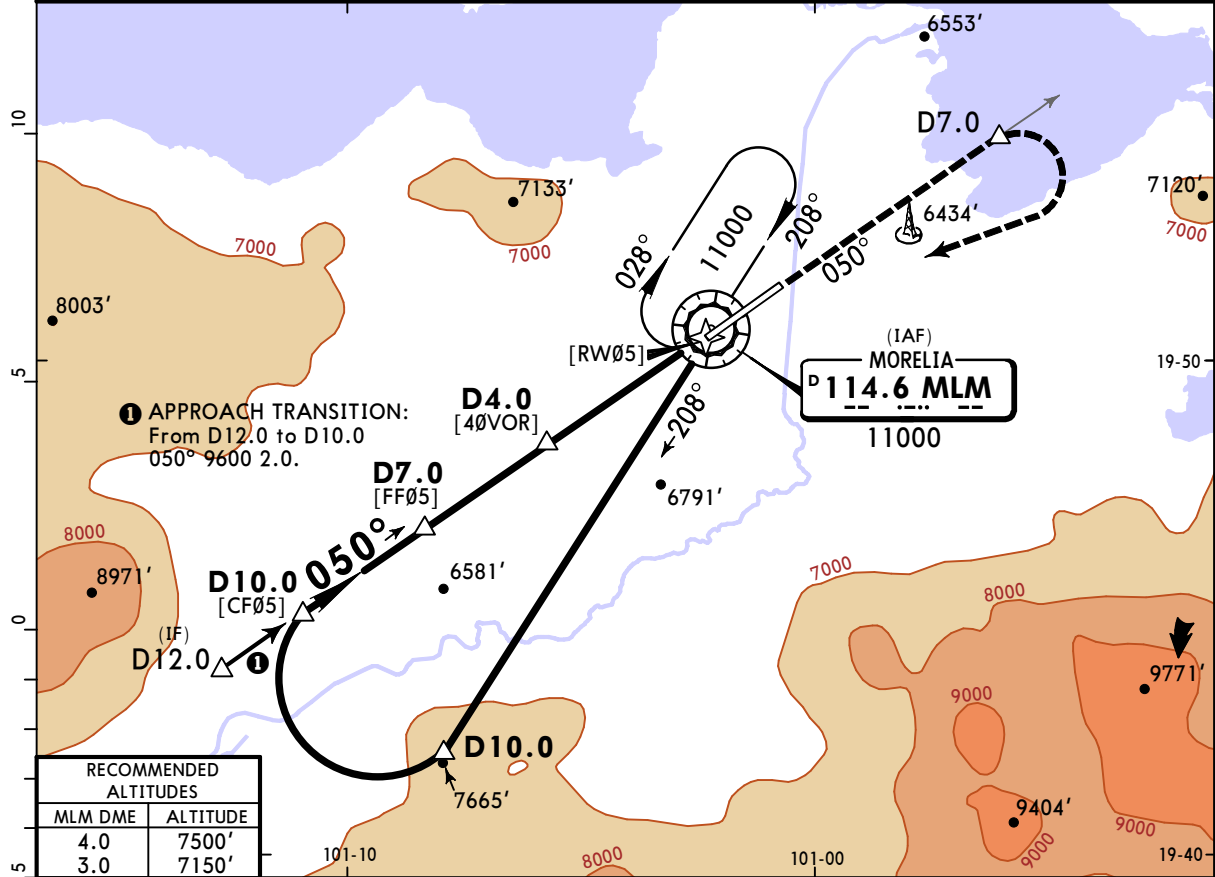
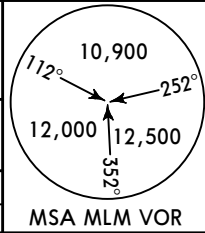
CHANGES: General Aviation parking spot coordinates, taxiways, building.

**MMMM/MLM**  
**GEN FRANCISCO**  
**J MUJICA INTL**

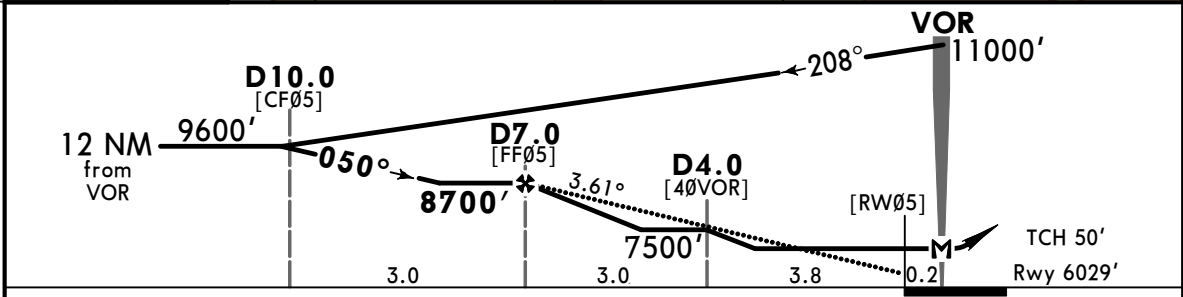
**JEPPESEN**  
 15 MAR 24 **(13-1)** Eff 21 Mar

**MORELIA, MEXICO**  
**VOR Z Rwy 05**

MORELIA Approach <b>118.5</b>				MORELIA Tower <b>118.5</b>	
VOR MLM <b>114.6</b>	Final Apch Crs <b>050°</b>	<b>D7.0</b> <b>8700'</b> (2671')	MDA(H) <b>6840'</b> (811')	Apt Elev 6033' Rwy 6029'	
<b>MISSED APCH:</b> Climb via MLM VOR R-050 to D7.0, then turn RIGHT within 10 NM to MLM VOR at the minimum holding altitude.					
Alt Set: IN (MB on req)		Trans level: FL195		Trans alt: 18500'	
DME required.					MSA MLM VOR



RECOMMENDED ALTITUDES	
MLM DME	ALTITUDE
4.0	7500'
3.0	7150'



Gnd speed-Kts	70	90	100	120	140	160
Descent Angle	3.61°	447	575	639	767	894
MAP at VOR						
FAF to MAP	7.0	6:00	4:40	4:12	3:30	3:00
				2:38		

PAPI-L	↑	via <b>114.6</b>	MLM
		<b>R-050</b>	<b>D7.0</b>

STRAIGHT-IN LANDING RWY 05			CIRCLE-TO-LAND		
MDA(H) <b>6840'</b> (811')					
A		1	Max Kts	90	MDA(H) <b>6900'</b> (867') -1
B		1¼		120	<b>6900'</b> (867') -1¼
C		2½		140	<b>7140'</b> (1107') -3
D		2¾		165	

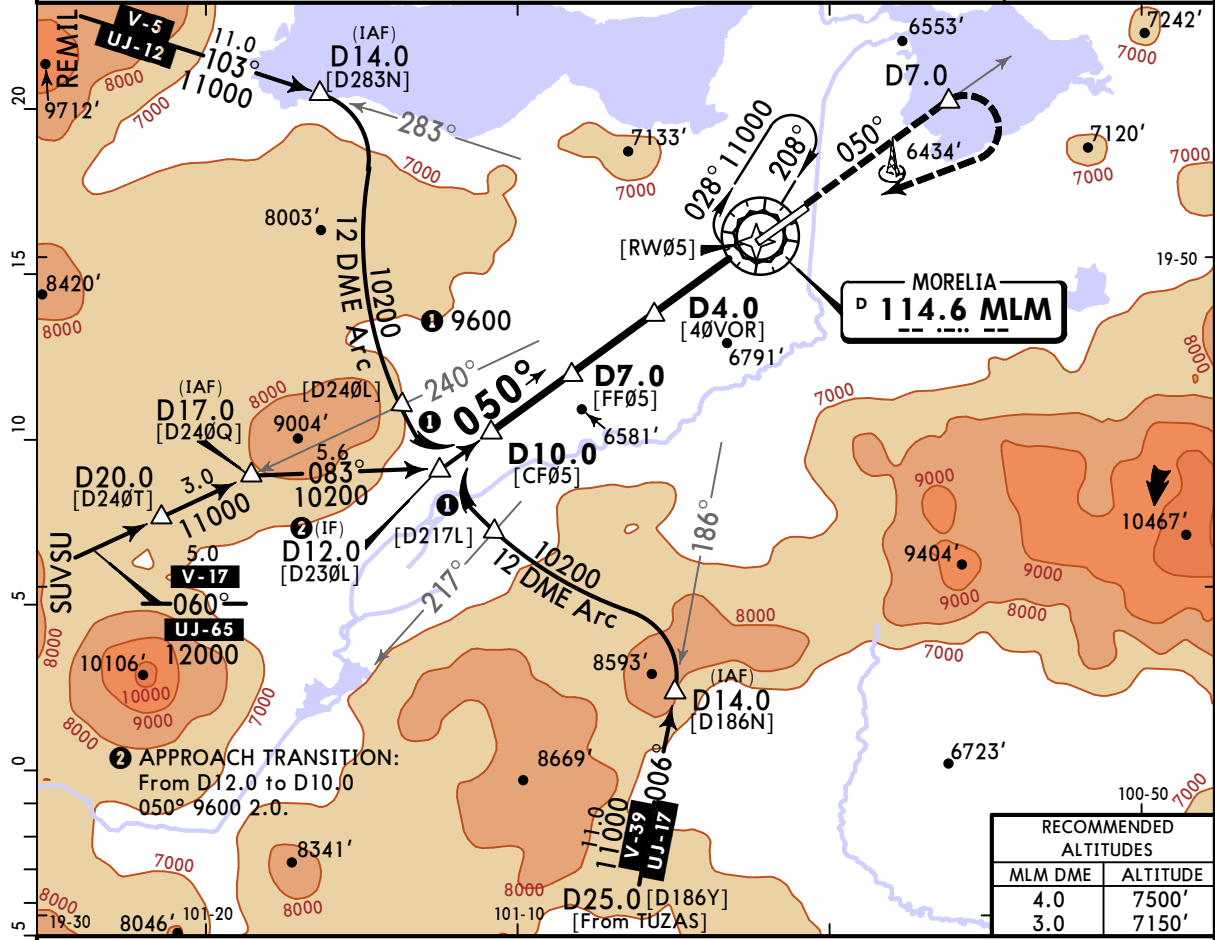
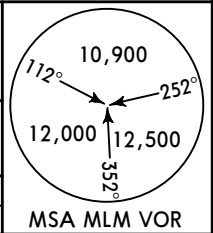


**MMMM/MLM**  
**GEN FRANCISCO**  
**J MUJICA INTL**

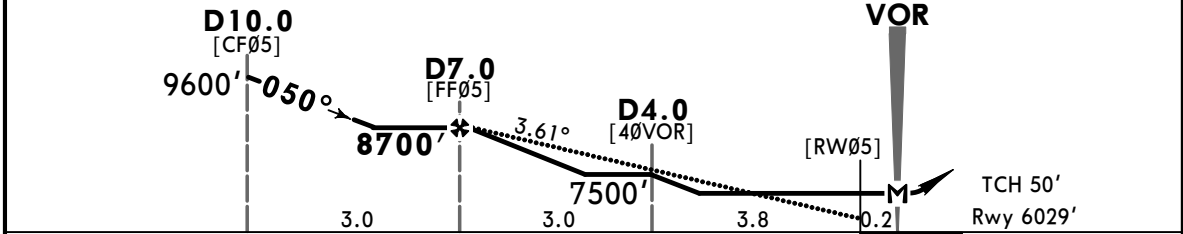
**JEPPESSEN**  
 15 MAR 24 **(13-2)** Eff 21 Mar

**MORELIA, MEXICO**  
**VOR Y Rwy 05**

MORELIA Approach <b>118.5</b>				MORELIA Tower <b>118.5</b>	
VOR MLM <b>114.6</b>	Final Apt Crs <b>050°</b>	<b>D7.0</b> <b>8700'</b> (2671')	MDA(H) <b>6840'</b> (811')	Apt Elev 6033'	Rwy 6029'
<b>MISSED APCH:</b> Climb via MLM VOR R-050 to D7.0, then turn RIGHT within 10 NM to MLM VOR at the minimum holding altitude.					
Alt Set: IN (MB on req)		Trans level: FL195		Trans alt: 18500'	
DME required.					MSA MLM VOR



RECOMMENDED ALTITUDES	
MLM DME	ALTITUDE
4.0	7500'
3.0	7150'



Gnd speed-Kts	70	90	100	120	140	160
Descent Angle	3.61°	447	575	639	767	894
MAP at VOR						
FAF to MAP	7.0	6:00	4:40	4:12	3:30	3:00

PAPI-L	↑	via <b>114.6</b>	<b>D7.0</b>
		<b>R-050</b>	

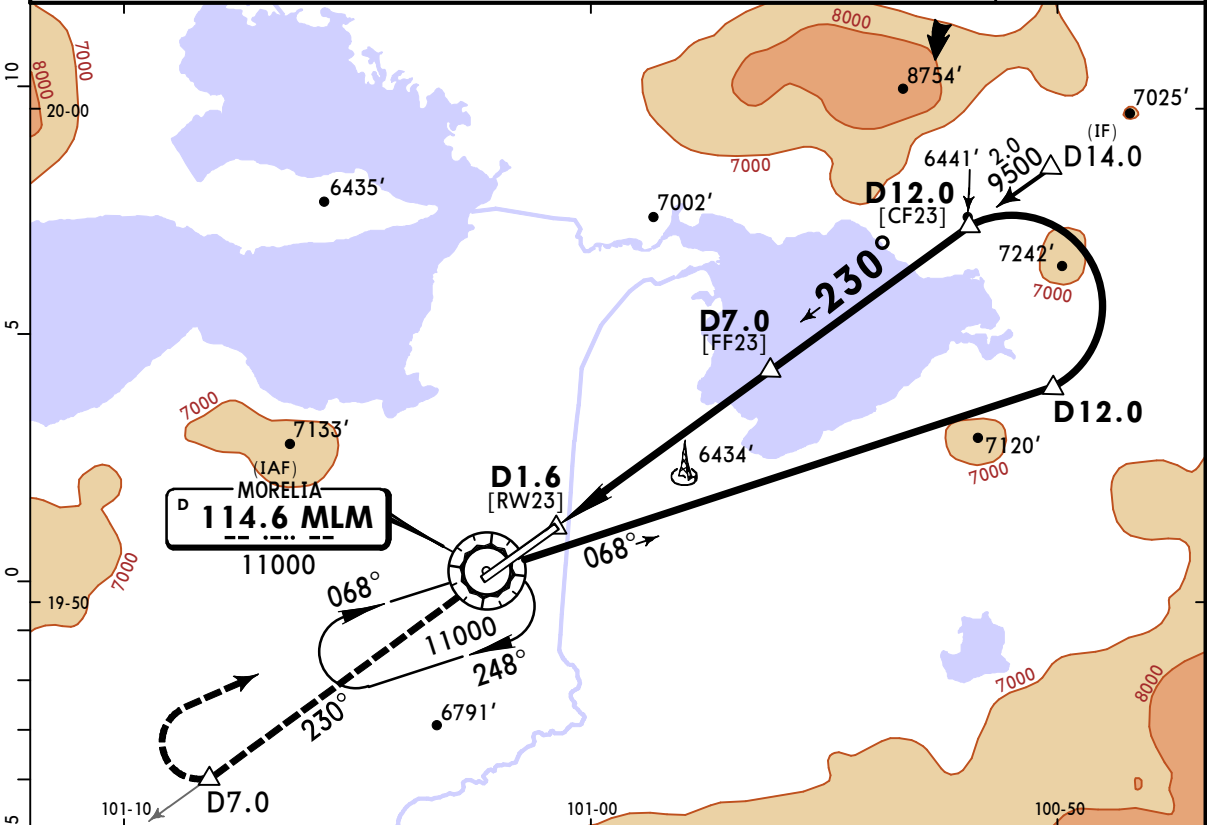
STRAIGHT-IN LANDING RWY 05		CIRCLE-TO-LAND	
MDA(H) <b>6840'</b> (811')		Max Kts	MDA(H)
A	1	90	<b>6900'</b> (867') -1
B	1¼	120	<b>6900'</b> (867') -1¼
C	2½	140	<b>7140'</b> (1107') -3
D	2¾	165	

CHANGES: Procedure title, bearings, note, descent angle.

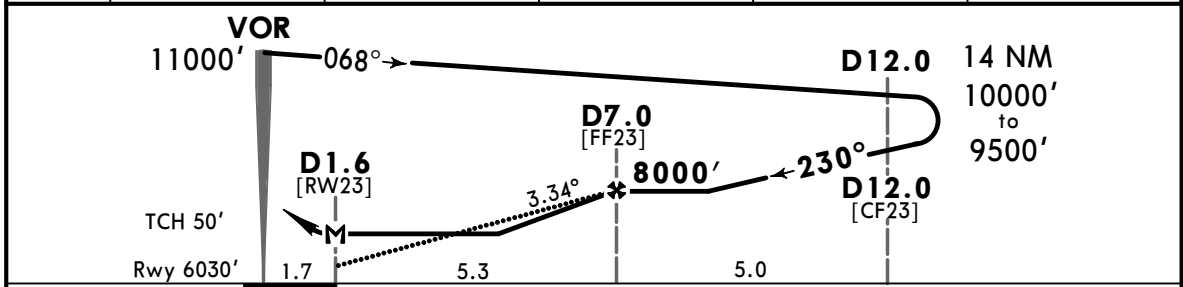


**MMMM/MLM** **JEPPESEN** **MORELIA, MEXICO**  
**GEN FRANCISCO J MUJICA INTL** Eff 21 Mar **(13-3)** **VOR Z Rwy 23**

MORELIA Approach				MORELIA Tower	
118.5				118.5	
VOR MLM <b>114.6</b>	Final Apch Crs <b>230°</b>	<b>D7.0</b> 8000' (1970')	MDA(H) <b>6580'</b> (550')	Apt Elev 6033' Rwy 6030'	
<b>MISSED APCH:</b> Climb outbound via MLM VOR R-230 to D7.0, then turn RIGHT within 10 NM to MLM VOR at the minimum holding altitude.					
Alt Set: IN (MB on req)		Trans level: FL195		Trans alt: 18500'	
DME required.					



MLM DME	3.0	4.0	5.0	6.0	7.0
ALTITUDE	6580'	6940'	7290'	7650'	8000'

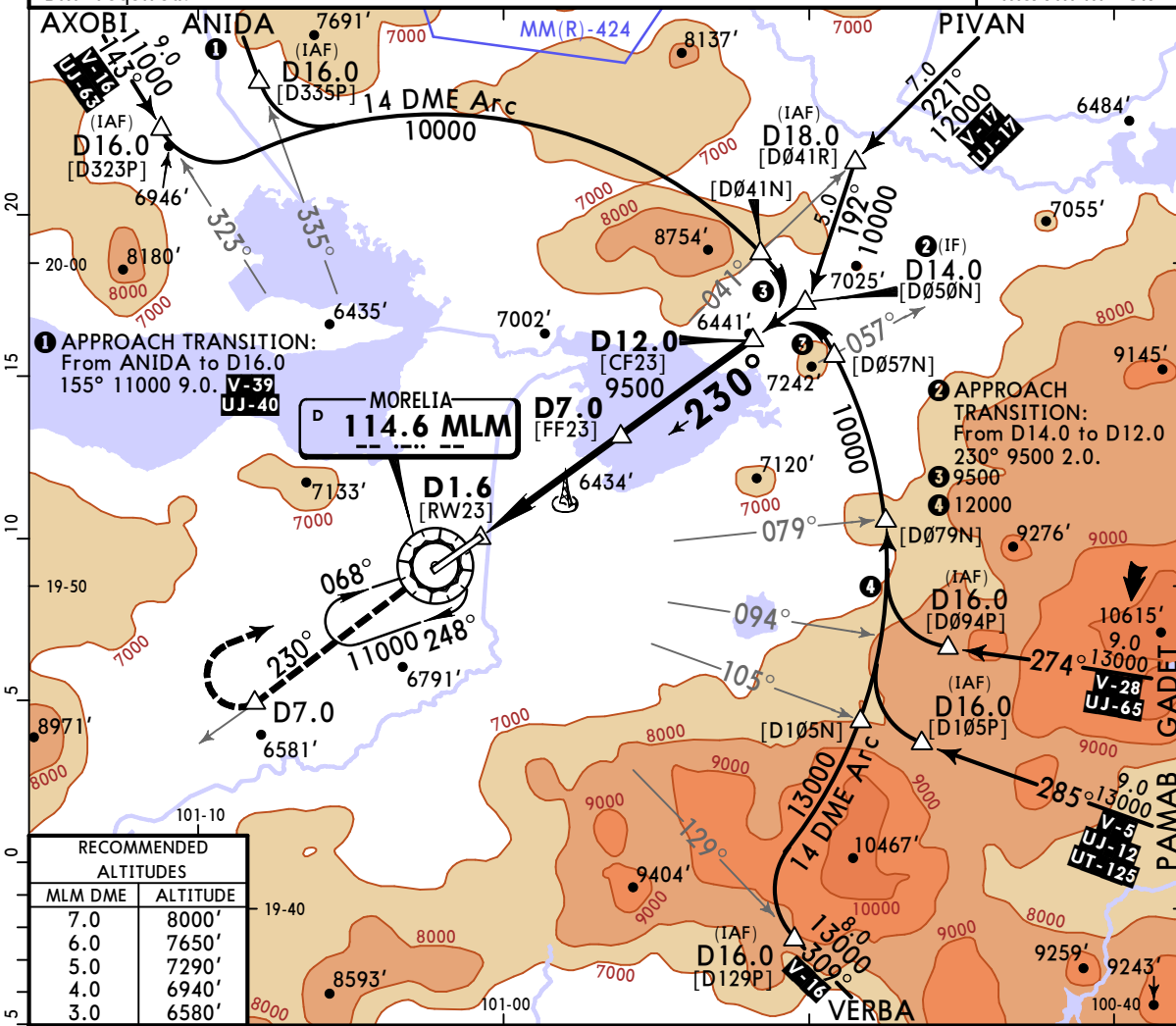
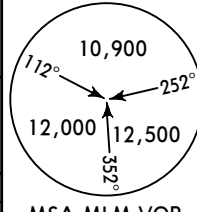


Gnd speed-Kts	70	90	100	120	140	160	SALS PAPI ↑ via <b>114.6</b> <b>D7.0</b> <b>R-230</b>	
Descent Angle	3.34°	414	532	591	709	827		946
MAP at D1.6	5.3	4:33	3:32	3:11	2:39	2:16		1:59

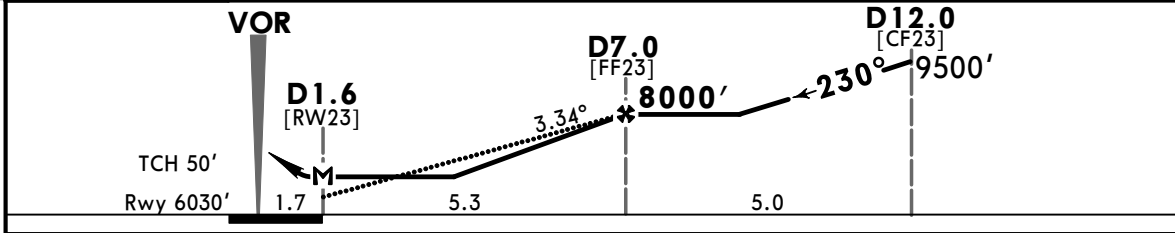
STRAIGHT-IN LANDING RWY23			CIRCLE-TO-LAND		
MDA(H) <b>6580'</b> (550')			Max Kts		
ALS out			MDA(H)		
A	1		90	<b>6900'</b> (867') - 1	
B	1		120	<b>6900'</b> (867') - 1¼	
C	1½		140	<b>7140'</b> (1107') - 3	
D	1¾		165		

**MMMM/MLM MORELIA, MEXICO**  
**GEN FRANCISCO J MUJICA INTL 15 MAR 24 (13-4) Eff 21 Mar VOR Y Rwy 23**

MORELIA Approach <b>118.5</b>			MORELIA Tower <b>118.5</b>		
VOR MLM <b>114.6</b>	Final Apch Crs <b>230°</b>	<b>D7.0</b> 8000' (1970')	MDA(H) <b>6580'</b> (550')	Apt Elev 6033'	Rwy 6030'
<b>MISSED APCH:</b> Climb outbound via MLM VOR R-230 to D7.0, then turn RIGHT within 10 NM to MLM VOR at the minimum holding altitude.					
Alt Set: IN (MB on req)		Trans level: FL195		Trans alt: 18500'	
DME required.					



RECOMMENDED ALTITUDES	
MLM DME	ALTITUDE
7.0	8000'
6.0	7650'
5.0	7290'
4.0	6940'
3.0	6580'



Gnd speed-Kts	70	90	100	120	140	160
Descent Angle 3.34°	414	532	591	709	827	946
MAP at D1.6						
FAF to MAP	5.3	4:33	3:32	3:11	2:39	2:16

SALS  
PAPI  
via **114.6 R-230** D7.0

STRAIGHT-IN LANDING RWY 23			CIRCLE-TO-LAND		
MDA(H) <b>6580'</b> (550')			MDA(H)		
ALS out			Max Kts		
A	1		90	6900' (867') -1	
B	1 1/2		120	6900' (867') -1 1/4	
C	1 3/4		140	7140' (1107') -3	
D			165		

MMMM/MLM



MORELIA, MEXICO

GEN FRANCISCO J MUJICA INTL

15 MAR 24

(13-5)

Eff 21 Mar

VOR-A

MORELIA Approach <b>118.5</b>				MORELIA Tower <b>118.5</b>																			
VOR MLM <b>114.6</b>	Final Apch Crs <b>230°</b>	No FAF	MDA(H) Refer to Minimums	Apt Elev 6033'																			
<b>MISSED APCH: Climb outbound on MLM VOR R-230 then RIGHT teardrop turn within 10 NM to MLM VOR to the minimum holding altitude.</b>								MAX OUTBOUND LEG DISTANCE 7 NM															
								Gnd Speed-Kts	80	100	120	140	160	180	200								
Time		5:15	4:12	3:30	3:00	2:38	2:20	2:06															
Alt Set: IN (MB on req)		Trans level: FL195				Trans alt: 18500'		MSA MLM VOR															
<table border="1" style="width:100%; border-collapse: collapse;"> <tr><td style="width:10%;"></td><td style="width:10%;"></td><td style="width:10%;"></td><td style="width:10%;"></td><td style="width:10%;"></td><td style="width:10%;"></td><td style="width:10%;"></td><td style="width:10%;"></td></tr> <tr><td colspan="8">MAP at VOR</td></tr> </table>														MAP at VOR								Lighting - Refer to Airport Chart	↑ on <b>114.6</b> <b>R-230</b>
MAP at VOR																							
CIRCLE-TO-LAND																							
						Max Kts	MDA(H)																
						A	90	<b>7080'</b> (1047') - 1 1/4															
						B	120	<b>7080'</b> (1047') - 1 1/2															
						C	140	<b>7140'</b> (1107') - 3															
						D	165	<b>7140'</b> (1107') - 3															