

## General Information

Location: LEON MEX  
ICAO/IATA: MMLO / BJX  
Lat/Long: N20° 59.6', W101° 28.9'  
Elevation: 5956 ft

Airport Use: Public  
Daylight Savings: Not Observed  
UTC Conversion: +6:00 = UTC  
Magnetic Variation: 6.0° E

Fuel Types: 100-130 Octane, Jet A  
Customs: Yes  
Airport Type: IFR  
Landing Fee: No  
Control Tower: Yes  
Jet Start Unit: No  
LLWS Alert: No  
Beacon: No

Sunrise: 1224 Z  
Sunset: 0118 Z

## Runway Information

Runway: 13  
Length x Width: 11486 ft x 148 ft  
Surface Type: asphalt  
TDZ-Elev: 5955 ft  
Lighting: Edge

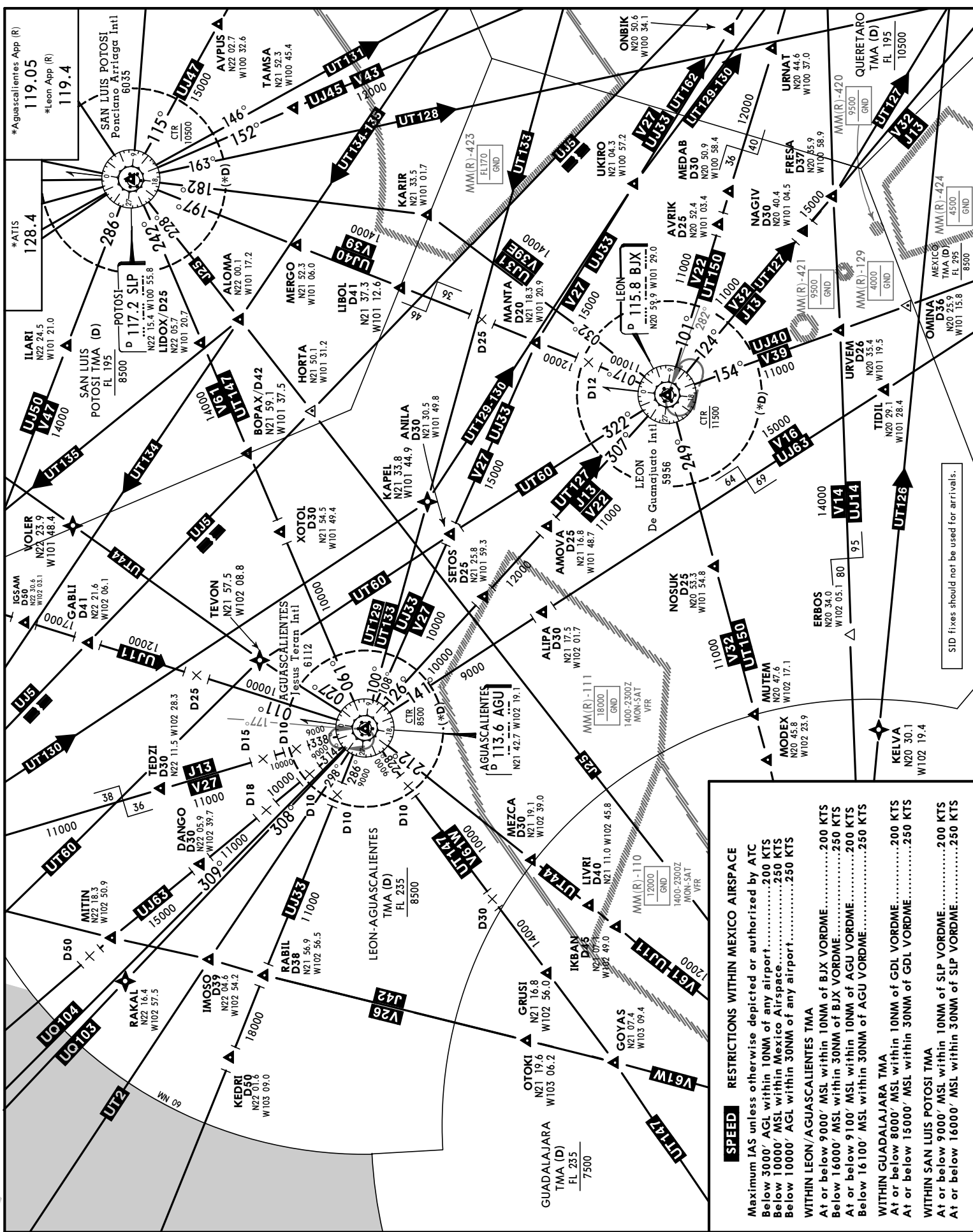
Runway: 31  
Length x Width: 11486 ft x 148 ft  
Surface Type: asphalt  
TDZ-Elev: 5899 ft  
Lighting: Edge

## Communication Information

ATIS: 128.400  
Leon Tower: 118.350  
Aguascalientes Approach: 119.050  
Leon Approach: 119.400  
Mexico Control ACC: 126.150 RCO

Leon Information: 122.300 AFIS  
Mexico Control ACC: 133.100 RCO  
Mexico Control ACC: 125.100 RCO  
Mexico Control ACC: 123.900 RCO

19 JUL 24 (10-1B)  
TMA  
LEON/AGUASCALIENTES, MEXICO



**SPEED RESTRICTIONS WITHIN MEXICO AIRSPACE**

Maximum IAS unless otherwise depicted or authorized by ATC

Below 3000' AGL within 10NM of any airport.....200 KTS

Below 10000' MSL within Mexico Airspace.....250 KTS

Below 10000' AGL within 30NM of any airport.....250 KTS

**WITHIN LEON/AGUASCALIENTES TMA**

At or below 9000' MSL within 10NM of BJJ VORDME.....200 KTS

Below 16000' MSL within 30NM of BJJ VORDME.....250 KTS

At or below 9100' MSL within 10NM of AGU VORDME.....200 KTS

Below 16100' MSL within 30NM of AGU VORDME.....250 KTS

**WITHIN GUADALAJARA TMA**

At or below 8000' MSL within 10NM of GDL VORDME.....200 KTS

At or below 15000' MSL within 30NM of GDL VORDME.....250 KTS

**WITHIN SAN LUIS POTOSI TMA**

At or below 9000' MSL within 10NM of SLP VORDME.....200 KTS

At or below 16000' MSL within 30NM of SLP VORDME.....250 KTS

MMLO/BJX

JEPPESEN

LEON, MEXICO

DE GUANAJUATO INTL

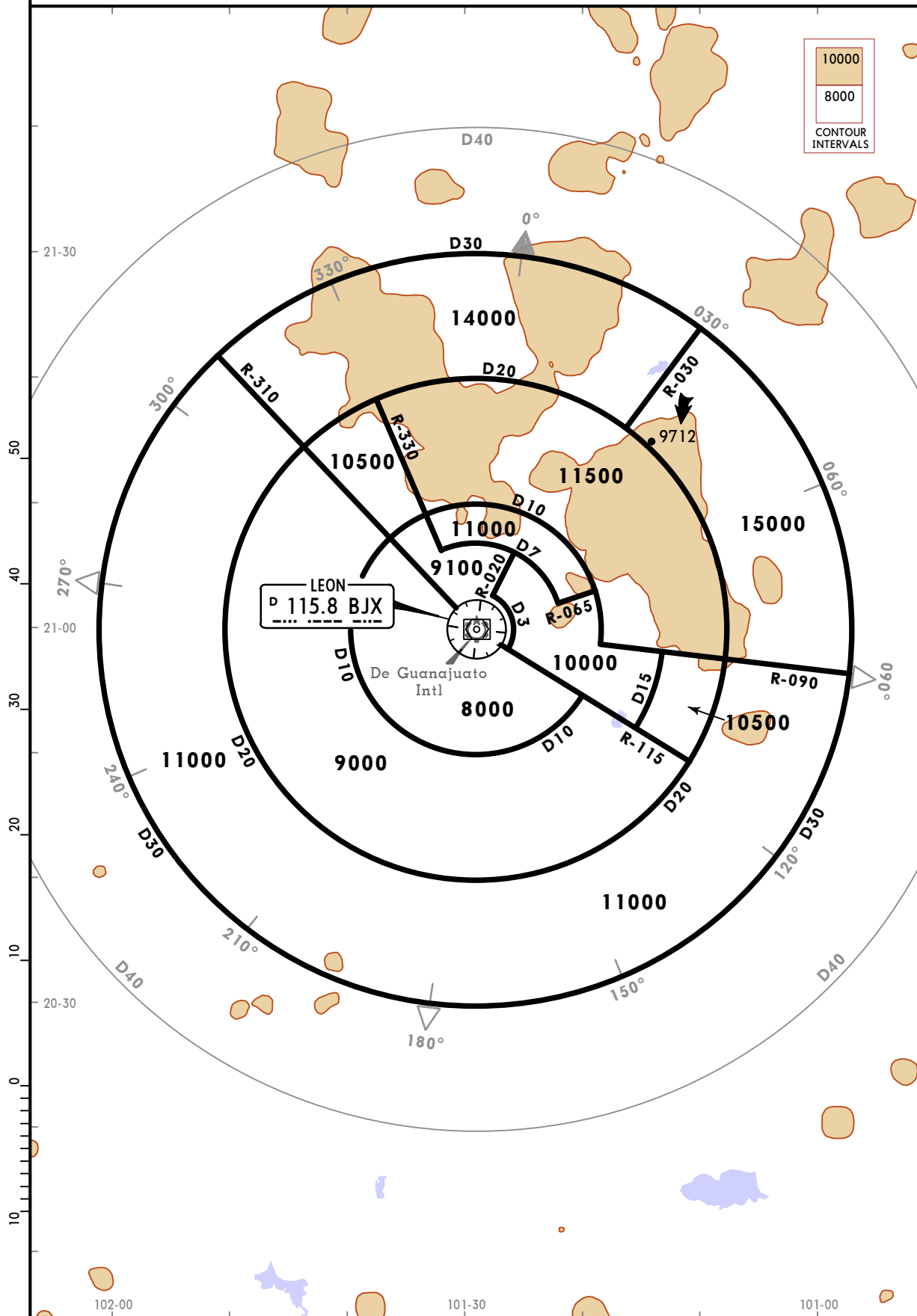
23 DEC 22  
Eff 29 Dec

10-1R

RADAR MINIMUM ALTITUDES

*LEON Approach (R) <b>119.4</b>	*AGUASCALIENTES Approach (R) <b>119.05</b>	Apt Elev <b>5956</b>	Alt Set: IN (MB on req) Trans level: FL 195	Trans alt: 18500
------------------------------------	---	-------------------------	--	------------------

1. These are the lowest MVAs that can be assigned by the controller in a sector when RADAR control procedures (vectors) are applied, without affecting routes and procedures with lower minimums.
2. All aircraft operating under VFR within these TMA's should have a transponder with mode 3 A/C with 4096 code capabilities.
3. Exclusive use chart to verify assigned altitudes to identified aircraft.



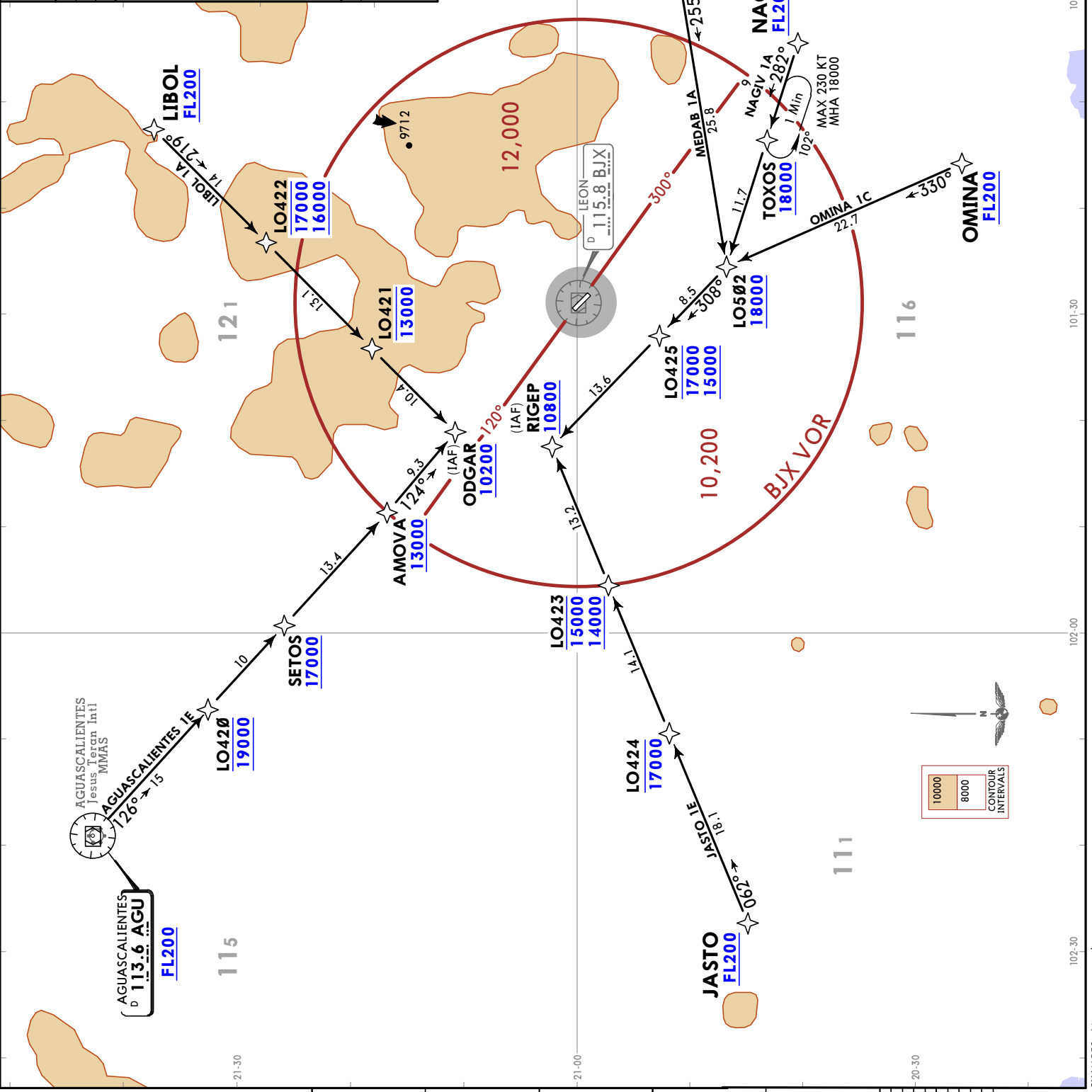
CHANGES: Approach frequency.

© JEPPESEN, 2007, 2022. ALL RIGHTS RESERVED.

18 FEB 22 (10-2) Eft 24 Feb RNAV STAR

MMLO/BJX DE GUANAJUATO INTL

*ATIS 128.4	Apt Elev 5956
Alt Set: IN (MB on req) Trans level: FL195	
RNAV 1 GNSS required	
RADAR required.	
<b>AGUASCALIENTES 1E</b> (AGUIE) [AGUIE] JASTO 1E (JASTO1E) [JAST1E] LIBOL 1A (LIBOL1A) [LIBO1A] MEDAB 1A (MEDAB1A) [MEDA1A] NAGIV 1A (NAGIV1A) [NAGI1A] OMINA 1C (OMINA1C) [OMIN1C] RNAV ARRIVALS (RWY 13)	
<b>ROUTING</b> From AGU VOR, JASTO, LIBOL, MEDAB, NAGIV or OMINA continue to the waypoints, altitudes and tracks shown, to the corresponding IAF and continue on approach procedure or according to ATC instructions.	



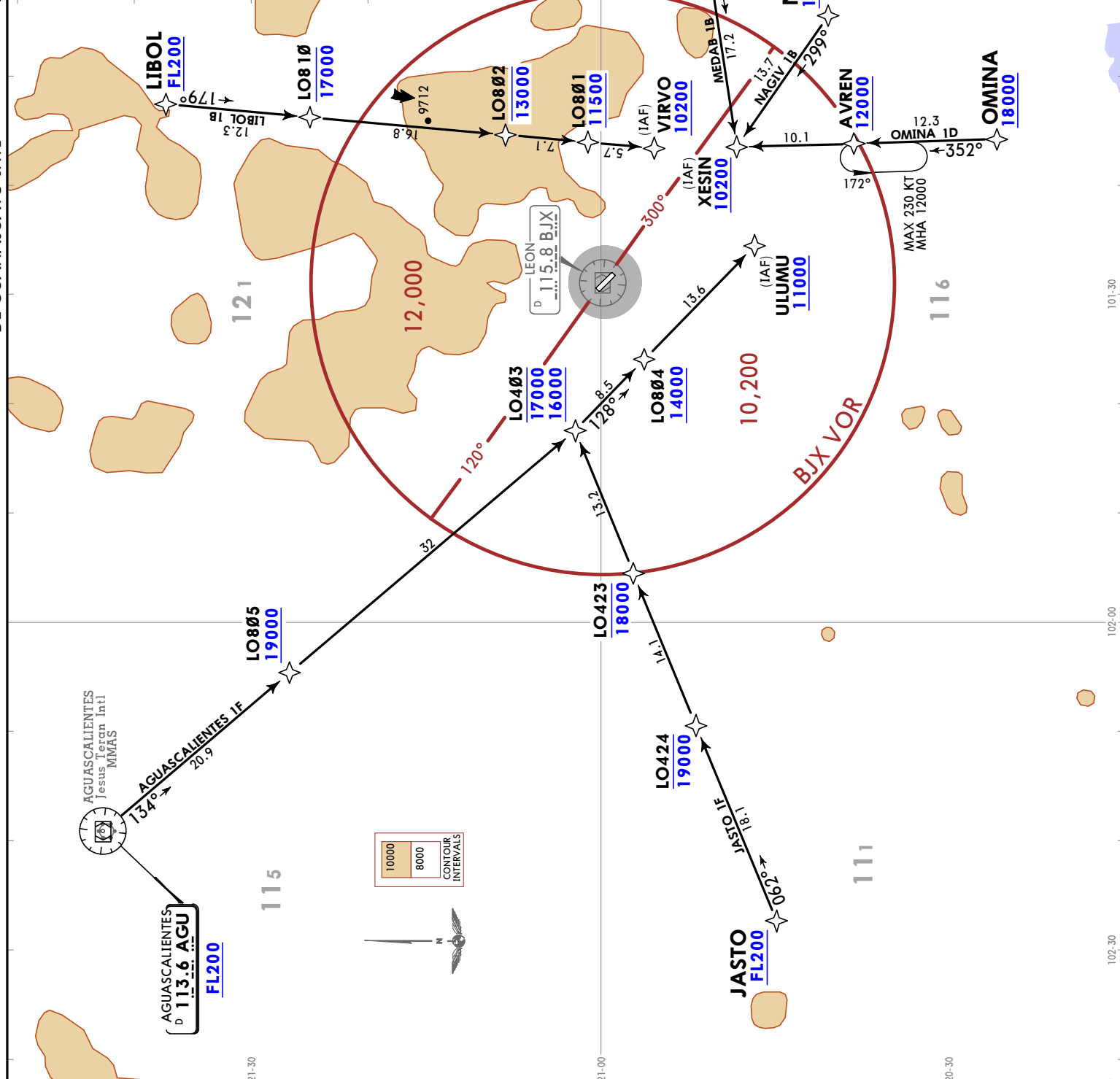
LEON, MEXICO

JEPPESEN  
18 FEB 22 10-2A Eff 24 Feb

MMLO/BJX  
DE GUANAJUATO INTL

RNAV STAR

*ATIS 128.4	Apt Elev 5956
Alt Set: IN (MB on req)	Trans level: FL195
RNAV 1 GNSS required	
RADAR required.	
<b>AGUASCALIENTES 1F (AGU1F) [AGU1F]</b> <b>JASTO 1F (JASTO1F) [JAST1F]</b> <b>LIBOL 1B (LIBOL1B) [LIBO1B]</b> <b>MEDAB 1B (MEDAB1B) [MEDA1B]</b> <b>NAGIV 1B (NAGIV1B) [NAG1B]</b> <b>OMINA 1D (OMINA1D) [OMIN1D]</b> <b>RNAV ARRIVALS</b> <b>(RWY 31)</b>	
<b>ROUTING</b> From AGU VOR, JASTO, LIBOL, MEDAB, NAGIV or OMINA continue to the waypoints, altitudes and tracks shown, to the corresponding IAF and continue on approach procedure or according to ATC instructions.	



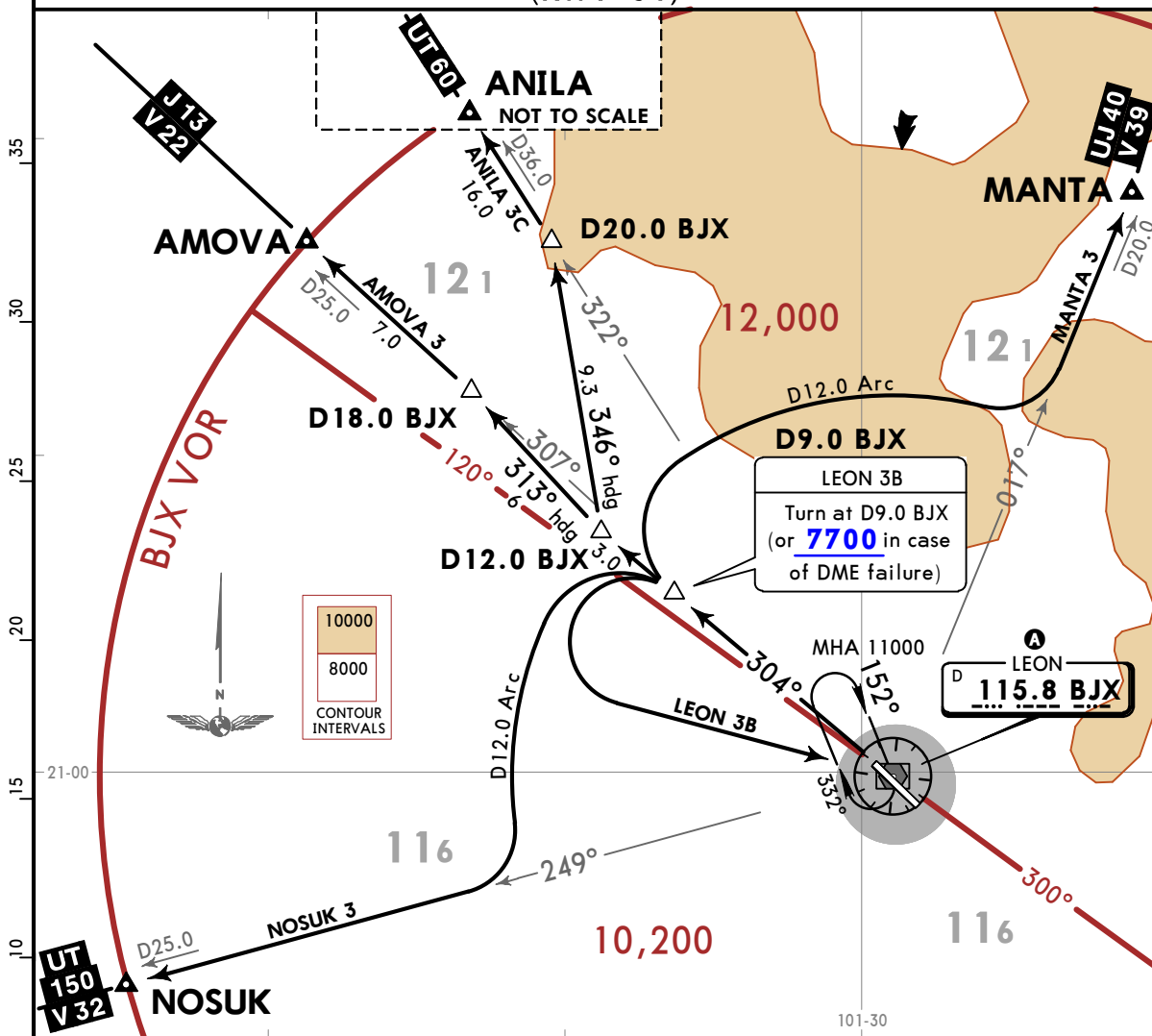
MMLO/BJX  
DE GUANAJUATO INTL

JEPPESEN  
18 FEB 22 10-3 Eff 24 Feb

LEON, MEXICO  
SID

Apt Elev 5956	Trans alt: 18500
------------------	------------------

AMOVA 3 (AMOVA3) [AMOVA3], ANILA 3C (ANILA3C) [ANIL3C]  
LEON 3B (BJX3B) [BJX3B], MANTA 3 (MANTA3) [MANTA3]  
NOSUK 3 (NOSUK3) [NOSUK3]  
DEPARTURES  
(RWY 31)



These SIDs require minimum climb gradients:  
AMOVA 3 and ANILA 3C: 230 per NM (3.78%) to 11000.  
MANTA 3: 320 per NM (5.26%) to 11000.

Gnd speed-KT	75	100	150	200	250	300
230 per NM	288	383	575	767	958	1150
320 per NM	400	533	800	1067	1333	1600

MINIMUM CROSSING ALTITUDE			
SLP	V-39	UJ-40	10600
QET	V-22	UT-150	10000
MLM	V-39-46	UJ-40	9600
GDL	V-32	UT-150	9600
AGU	V-22	J-13	9600
ANILA		UT-60	10000

SID	INITIAL CLIMB
AMOVA 3	Climb via BJX R304 to D12.0 BJX, turn RIGHT and proceed on heading 313° to intercept BJX R307 to AMOVA and continue on the assigned route or ATC instructions.
ANILA 3C	Climb via BJX R304 to D12.0 BJX, turn RIGHT and proceed on heading 346° to intercept BJX R322 to ANILA and continue on the assigned route or ATC instructions.
LEON 3B	Climb via BJX R304 to D9.0 BJX (or 7700 in case of DME failure), turn LEFT within 12 NM to BJX VOR and depart BJX VOR according to the minimum crossing altitude of the assigned route or ATC instructions. <span style="float: right;">A</span>
MANTA 3	Climb via BJX R304 to D9.0 BJX, turn RIGHT and proceed on D12.0 Arc BJX to intercept BJX R017 to MANTA and continue on the assigned route or ATC instructions.
NOSUK 3	Climb via BJX R304 to D9.0 BJX, turn LEFT and proceed on D12.0 Arc BJX to intercept BJX R249 to NOSUK and continue on the assigned route or ATC instructions.

CHANGES: Airways and MCA revised.

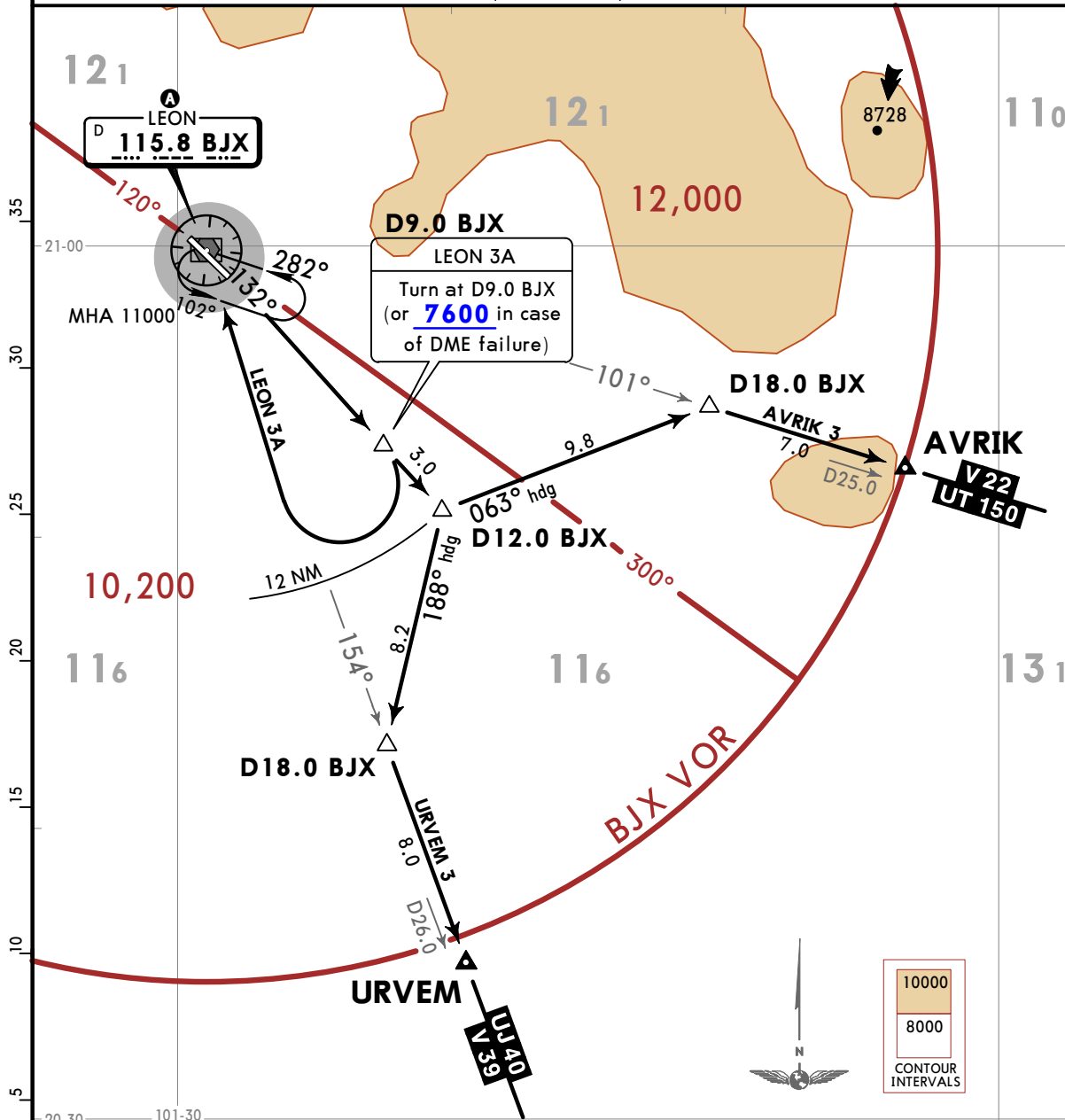
**MMLO/BJX**  
DE GUANAJUATO INTL

**JEPPESEN**  
18 FEB 22 **10-3A** Eff 24 Feb

**LEON, MEXICO**  
**SID**

Apt Elev 5956	Trans alt: 18500
------------------	------------------

**AVRIK 3 (AVRIK3), LEON 3A (BJX3A), URVEM 3 (URVEM3)  
DEPARTURES  
(RWY 13)**



A MINIMUM CROSSING ALTITUDE			
SLP	V-39	UJ-40	10600
QET	V-22	UT-150	10000
MLM	V-39-46	UJ-40	9600
GDL	V-32	UT-150	9600
AGU	V-22	J-13	9600
ANILA		UT-60	10000

SID	INITIAL CLIMB
<b>AVRIK 3</b>	Climb via BJX R132 to D12.0 BJX, turn LEFT and proceed on heading 063° to intercept BJX R101 to AVRIK and continue on the assigned route or ATC instructions.
<b>LEON 3A</b>	Climb via BJX R132 to D9.0 BJX (or 7600 in case of DME failure), turn RIGHT within 12 NM to BJX VOR and depart BJX VOR according to the minimum crossing altitude of the assigned route or ATC instructions. <span style="float: right;">A</span>
<b>URVEM 3</b>	Climb via BJX R132 to D12.0 BJX, turn RIGHT and proceed on heading 188° to intercept BJX R154 to URVEM and continue on the assigned route or ATC instructions.

CHANGES: Airways and MCA revised.



**MMLO/BJX**  
DE GUANAJUATO INTL

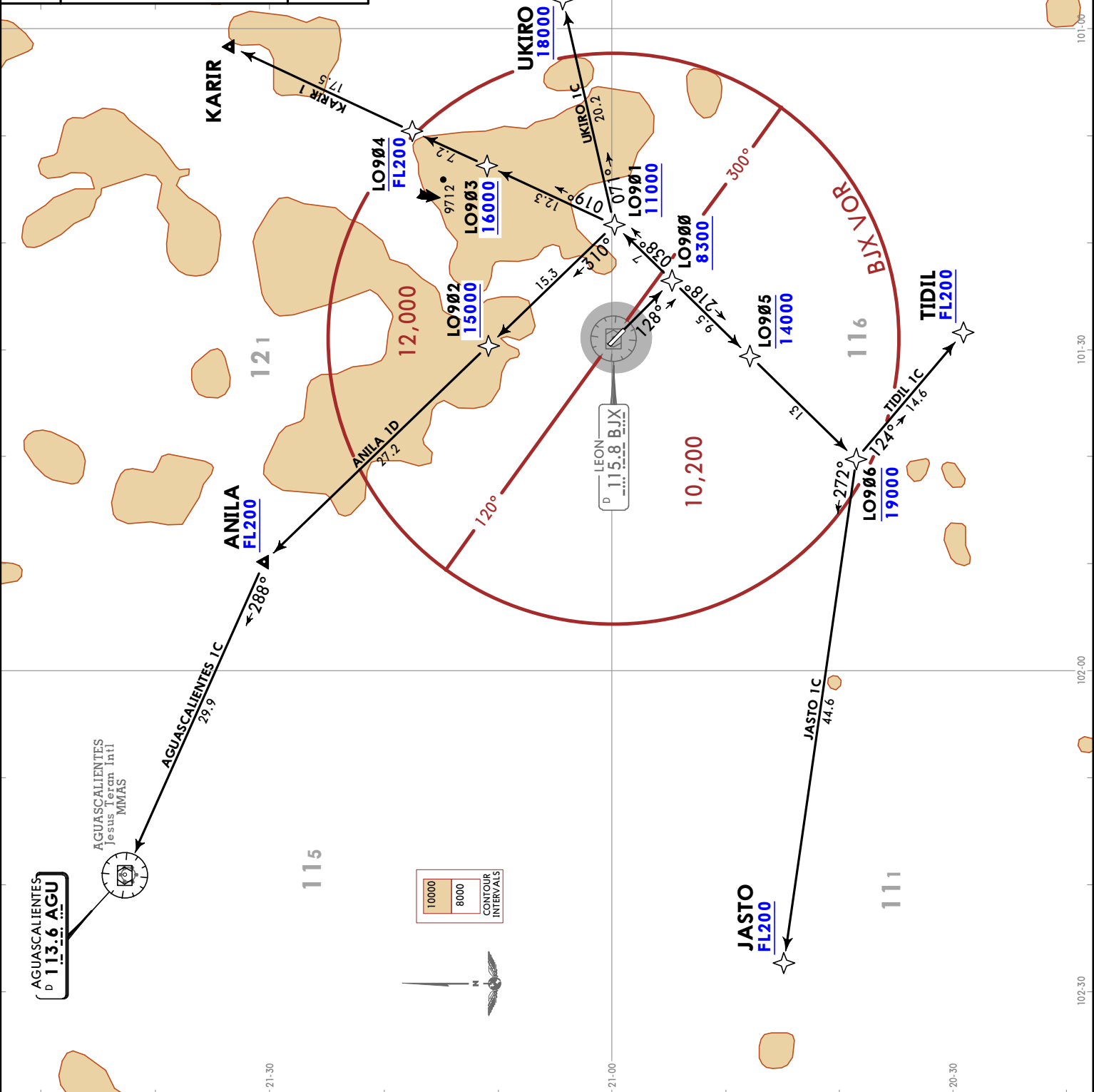
**JEPPESEN LEON, MEXICO**  
18 FEB 22 (10-3B) Eff 24 Feb **RNAV SID**

Apt Elev <b>5956</b>	Trans alt: 18500
RNAV 1 GNSS required	RADAR required.

**AGUASCALIENTES 1C**  
(AGUTC) [AGUTC]  
ANILA 1D (ANILA1D) [ANIL1D]  
JASTO 1C (JASTO1C) [JAST1C]  
KARIR 1 (KARIR1) [KARIR1]  
TIDIL 1C (TIDIL1C) [TIDI1C]  
UKIRO 1C (UKIRO1C) [UKIR1C]  
RNAV DEPARTURES  
(RWY 13)

These SIDs require a minimum climb gradient of 380 per NM (6.3%) until crossing 16000.

Gnd speed-KT	75	100	150	200	250	300
380 per NM	475	633	950	1267	1583	1900



LEON, MEXICO  
**RNAV SID**

**JEPPESEN**  
 18 FEB 22 10-3C Eff 24 Feb

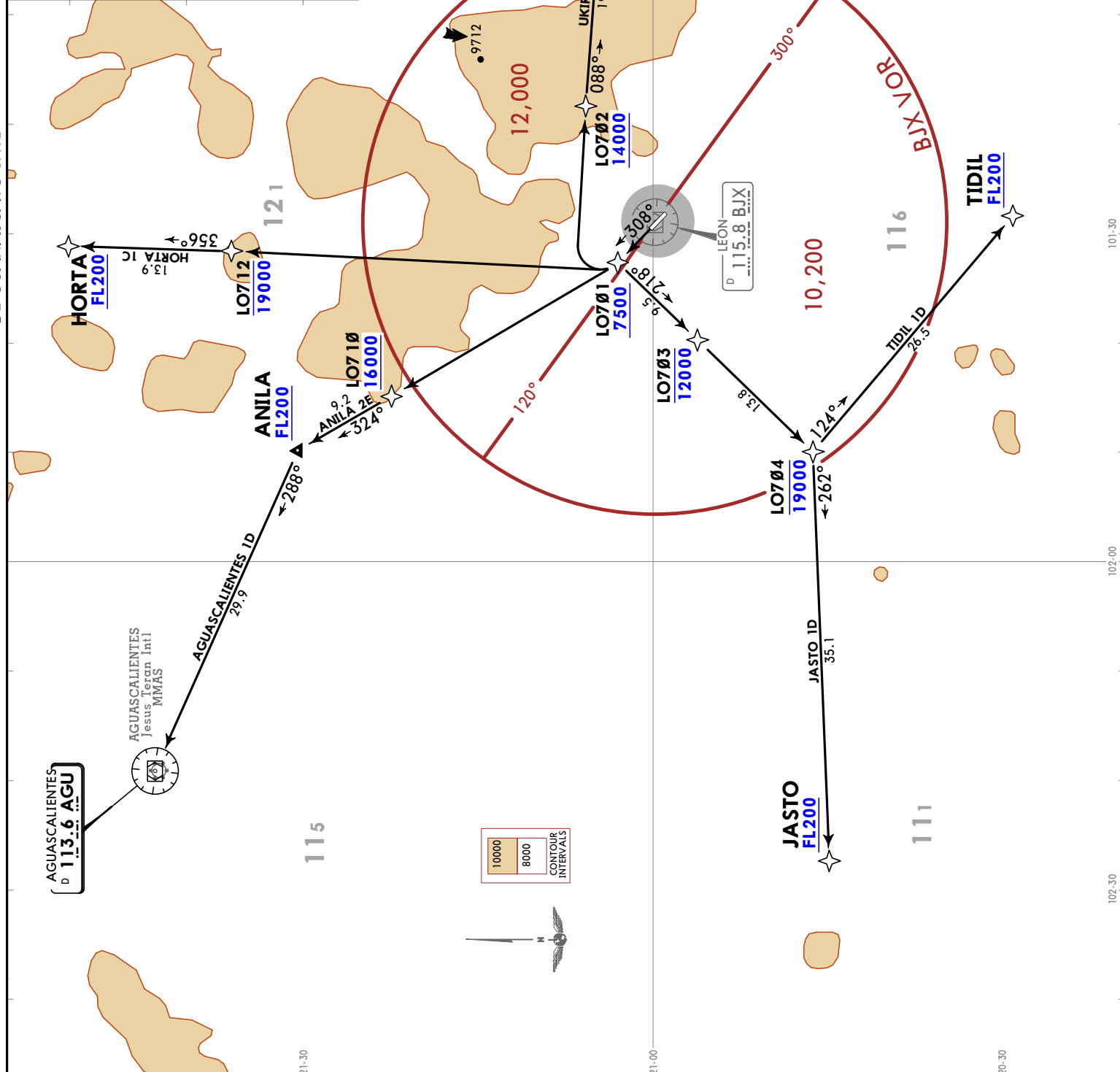
MMLO/BJX  
 DE GUANAJUATO INTL

Apt Elev 5956	Trans alt: 18500
RNAV 1 GNSS required	
RADAR required.	

**AGUASCALIENTES ID (AGUID) [AGUID]  
 ANILA 2E (ANILA2E) [ANIL2E]  
 HORTA 1C (HORTA1C) [HORT1C]  
 JASTO 1D (JASTO1D) [JAST1D]  
 TIDIL 1D (TIDIL1D) [TIDI1D]  
 UKIRO 1D (UKIRO1D) [UKIR1D]  
 RNAV DEPARTURES  
 (RWY 31)**

These SIDs require a minimum climb gradient of 390 per NM (6.4%) until crossing 15000.

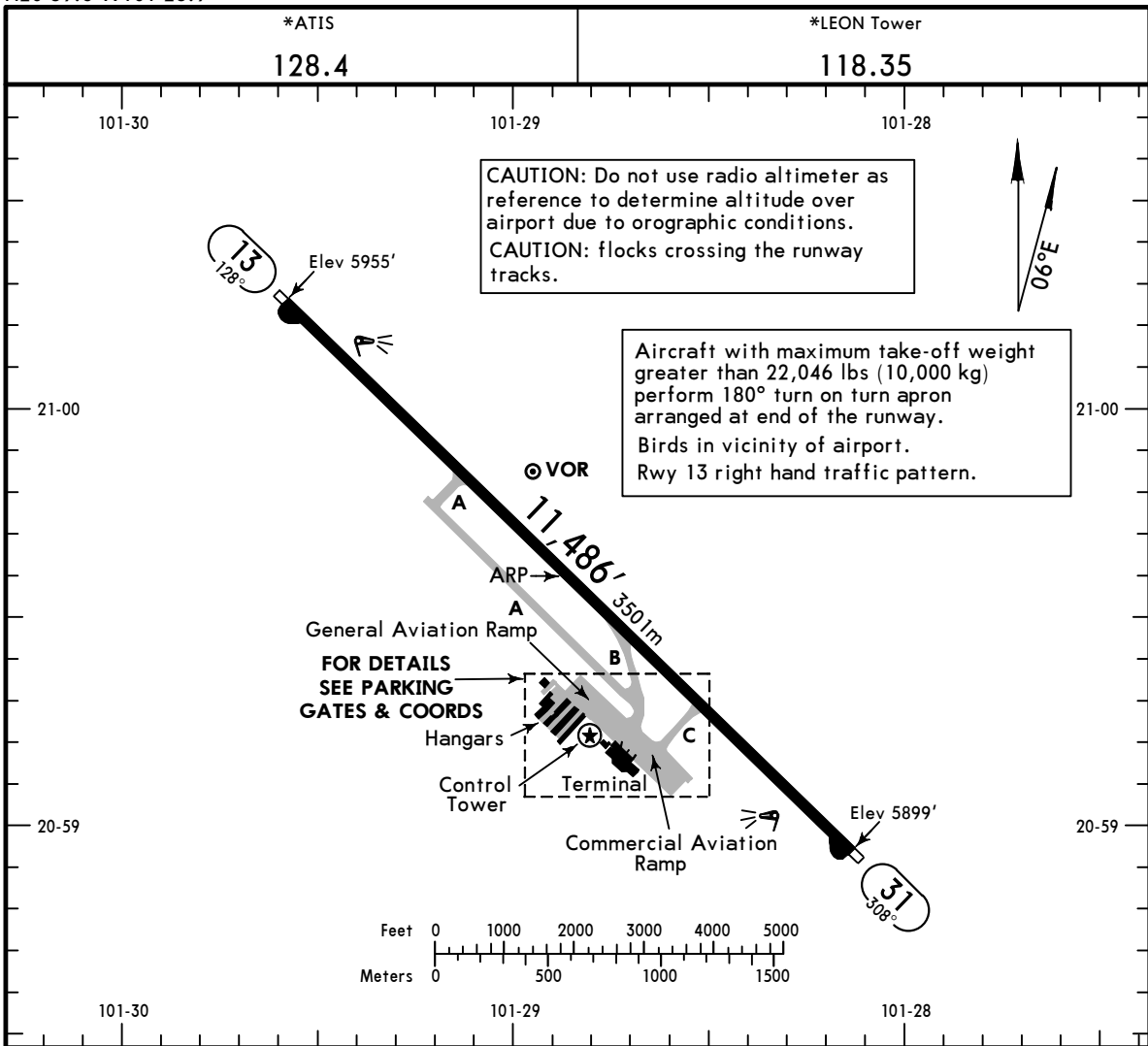
Gnd speed-KT	75	100	150	200	250	300
390 per NM	488	650	975	1300	1625	1950



**MMLO/BJX**  
 Apt Elev **5956'**  
 N20 59.6 W101 28.9

**JEPPESEN**  
 15 MAR 24 (10-9) Eff 21 Mar

**LEON, MEXICO**  
 DE GUANAJUATO INTL



**ADDITIONAL RUNWAY INFORMATION**

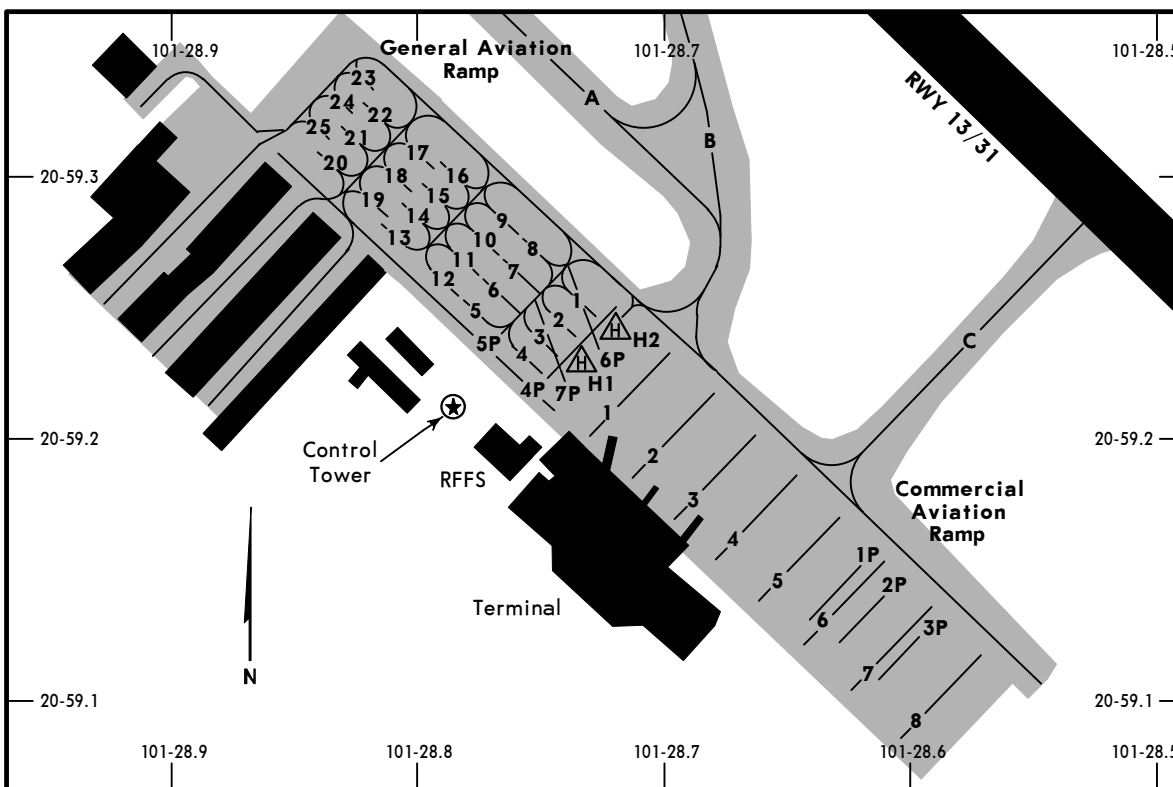
RWY	USABLE LENGTHS	LANDING BEYOND	TAKE-OFF	WIDTH
13 31	HIRL(60m) PAPI-L (angle 3.0°)			148' 45m

TAKE-OFF		FOR FILING AS ALTERNATE	
	Rwy 13	Rwy 31	
1 & 2 Eng	300- 1/2	300-1	A
3 & 4 Eng			B
			C
			D
			1200-3

MMLO/BJX

JEPPESEN  
15 MAR 24 (10-9A) Eff 21 Mar

LEON, MEXICO  
DE GUANAJUATO INTL



**INTERNATIONAL PARKING STAND COORDINATES**

SPOT No.	COORDINATES
<b>Commercial Aviation</b>	
1 thru 4	N20 59.2 W101 28.7
5	N20 59.1 W101 28.7
6 thru 8	N20 59.1 W101 28.6
1P, 2P, 3P	N20 59.1 W101 28.6
4P, 5P	N20 59.2 W101 28.8
6P, 7P	N20 59.2 W101 28.7
<b>General Aviation</b>	
1 thru 3	N20 59.2 W101 28.7
4	N20 59.2 W101 28.8
5 thru 25	N20 59.3 W101 28.8

**Notes**

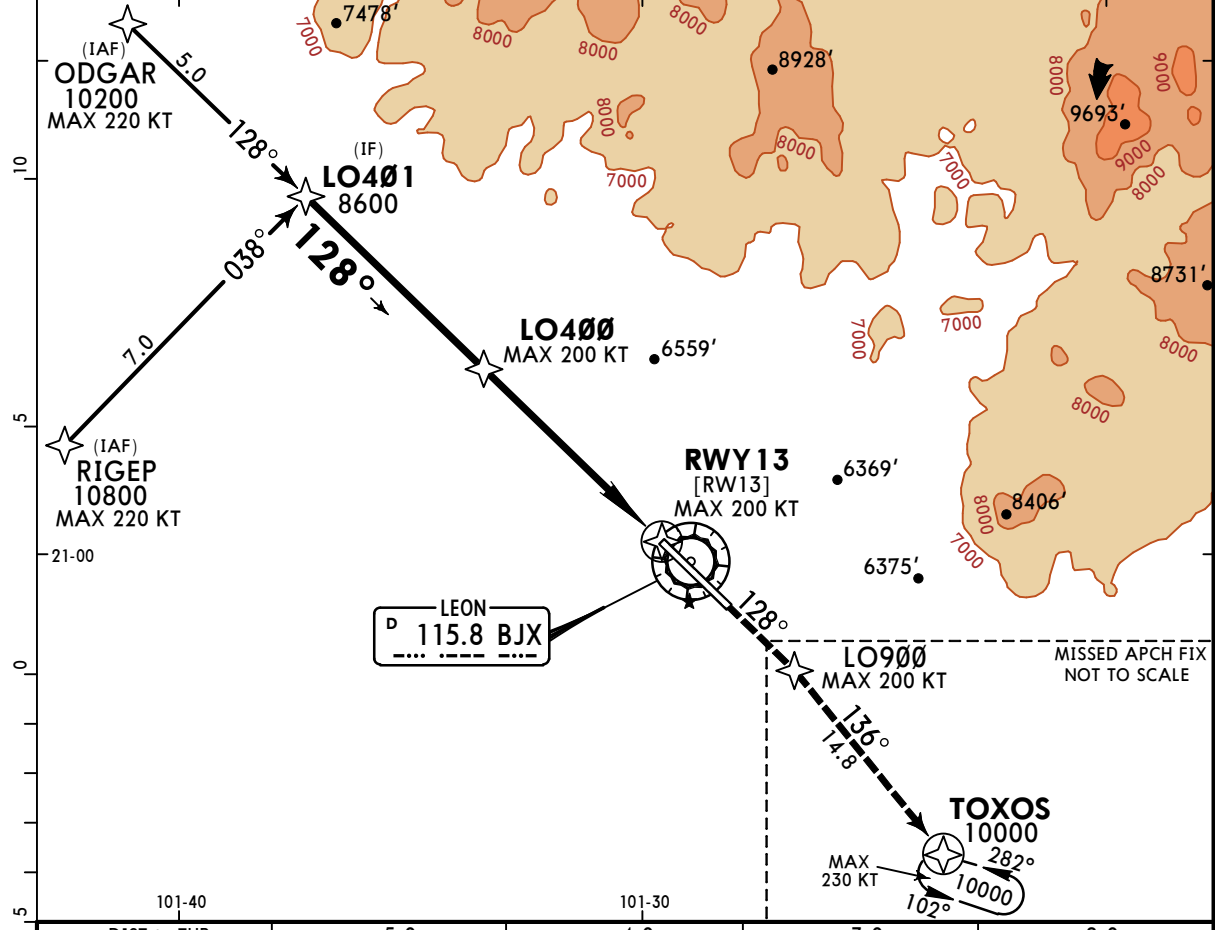
All aircraft shall be towed when leaving the Commercial Aviation apron.

**MMLO/BJX**  
DE GUANAJUATO INTL

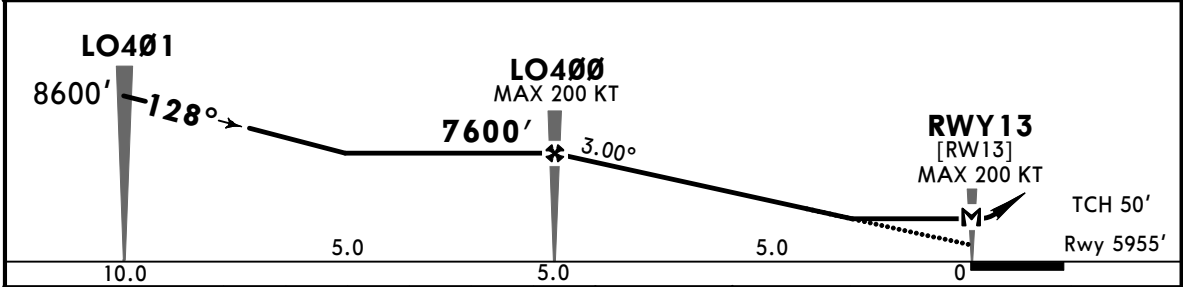
**JEPPESEN**  
23 DEC 22 **(12-1)** Eff 29 Dec

**LEON, MEXICO**  
RNP Rwy 13

*ATIS <b>128.4</b>	*LEON Approach (R) <b>119.4</b>	*AGUASCALIENTES Approach (R) <b>119.05</b>	*LEON Tower <b>118.35</b>	
RNAV	Final Apch Crs <b>128°</b>	LO400 <b>7600'</b> (1645')	MDA(H) <b>6500'</b> (545')	
Apt Elev 5956' Rwy 5955'				
<b>MISSED APCH:</b> Climb on runway track to LO900 and proceed on the missed approach to holding pattern at TOXOS at 10000'.				
Alt Set: IN (MB on req)		Apt Elev: 200 MB		Trans level: FL 195
RNP Apch			Trans alt: 18500'	
1. GNSS required. 2. Operative radar.				
			MSA BJX VOR	



DIST to THR	5.0	4.0	3.0	2.0
ALTITUDE	7600'	7280'	6960'	6640'



Gnd speed-Kts	70	90	100	120	140	160			
Descent Angle 3.00°	372	478	531	637	743	849			
MAP at RWY13									
FAF to MAP	5.0	4:17	3:20	3:00	2:30	2:09	1:53		

STRAIGHT-IN LANDING RWY13				CIRCLE-TO-LAND			
LNAV				MDA(H)			
MDA(H) <b>6500'</b> (545')				MDA(H)			
A	1			Max Kts	90		
B	1			120	6560' (604') -1		
C	1½			140	6720' (764') -2¼		
D	1¾			165	6880' (924') -3		

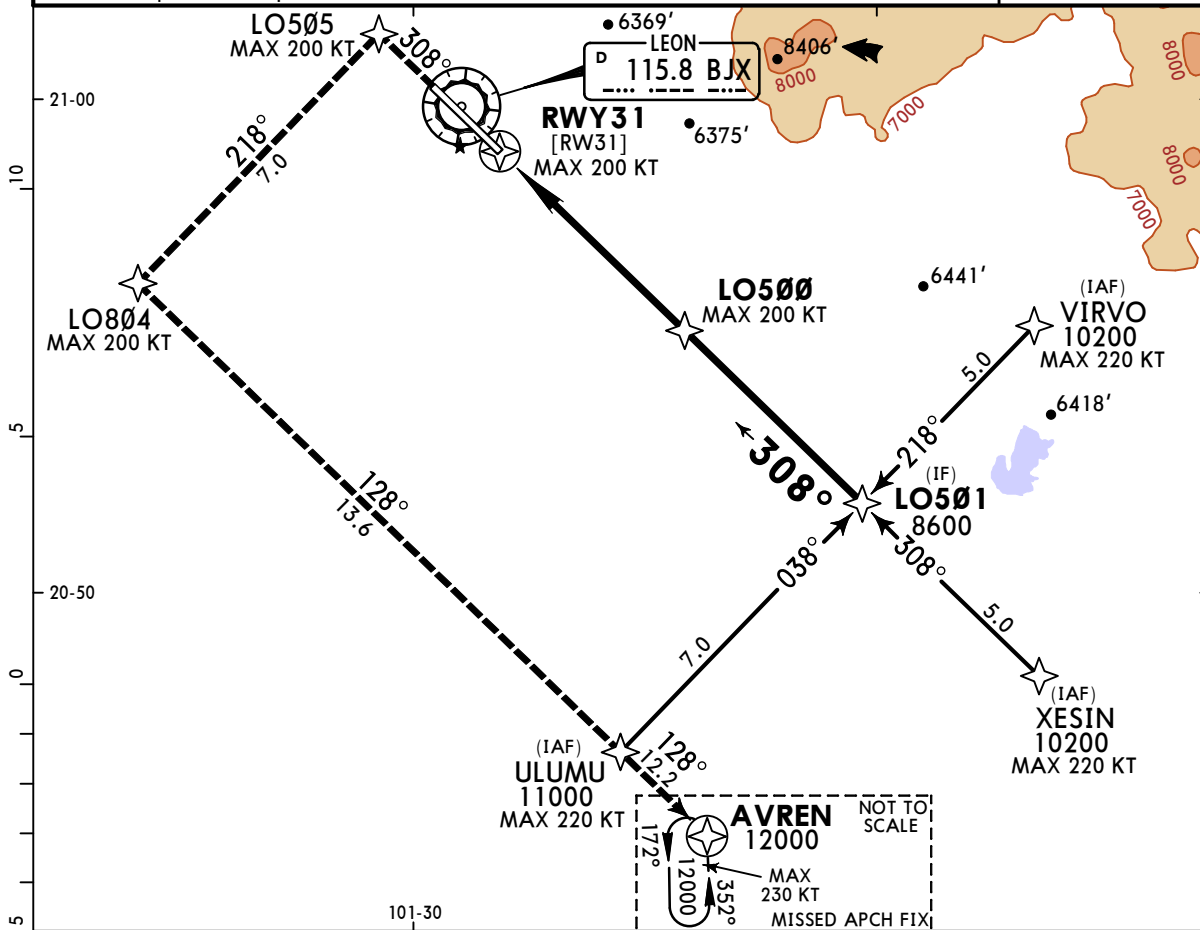
CHANGES: Comms, profile.

# MMLO/BJX DE GUANAJUATO INTL

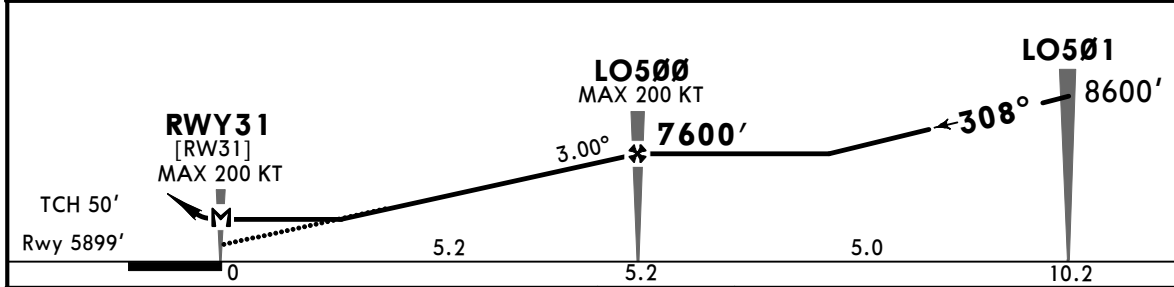
**JEPPESEN**  
23 DEC 22 **(12-2)** Eff 29 Dec

# LEON, MEXICO RNP Rwy 31

*ATIS 128.4	*LEON Approach (R) 119.4	*AGUASCALIENTES Approach (R) 119.05	*LEON Tower 118.35	
RNAV	Final Apch Crs <b>308°</b>	LO500 <b>7600'</b> (1701')	MDA(H) <b>6400'</b> (501')	
Apt Elev 5956' Rwy 5899'				
<b>MISSED APCH:</b> Climb on runway track to LO505 and proceed on the missed approach to holding pattern at AVREN at 12000'.				
Alt Set: IN (MB on req)		Apt Elev: 200 MB		Trans level: FL 195
RNP Apch				
1. GNSS required. 2. Operative radar.				



DIST to THR	2.0	3.0	4.0	5.0	5.2
ALTITUDE	6580'	6900'	7220'	7540'	7600'



Gnd speed-Kts	70	90	100	120	140	160	REIL PAPI-L		Rwy track	<b>LO505</b>
Descent Angle 3.00°	372	478	531	637	743	849				
MAP at RWY31	5.2	4:27	3:28	3:07	2:36	2:14				

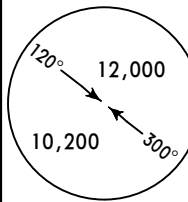
STRAIGHT-IN LANDING RWY31			CIRCLE-TO-LAND		
LNAV			MDA(H)		
MDA(H) <b>6400'</b> (501')			MDA(H)		
A	1	1 1/2	90	6560' (604') -1	
B			120	6720' (764') -2 1/4	
C			140	6880' (924') -3	
D			165		

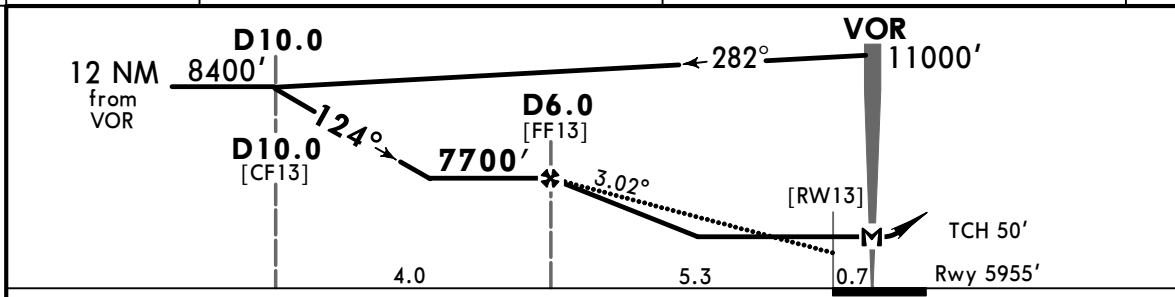
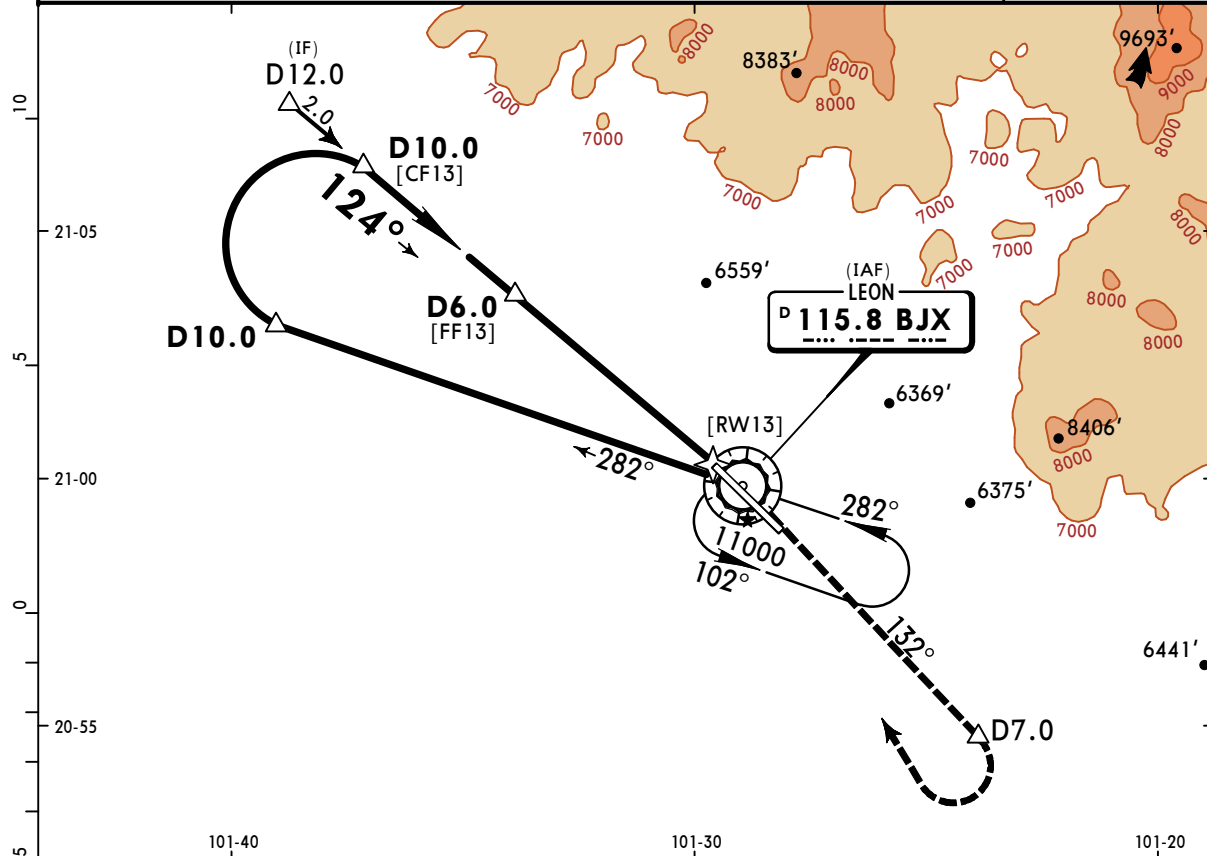
CHANGES: Comms, profile.

**MMLO/BJX**  
DE GUANAJUATO INTL

**JEPPESSEN**  
23 DEC 22 **13-1** Eff 29 Dec

**LEON, MEXICO**  
VOR DME 1 Rwy 13

*ATIS <b>128.4</b>		*LEON Approach (R) <b>119.4</b>		*AGUASCALIENTES Approach (R) <b>119.05</b>		*LEON Tower <b>118.35</b>			
VOR BJJ <b>115.8</b>	Final Apch Crs <b>124°</b>	<b>D6.0</b> 7700' (1745')	MDA(H) <b>6500'</b> (545')	Apt Elev 5956' Rwy 5955'					
<b>MISSED APCH:</b> Climb outbound on BJJ VOR R-132 to D7.0, turn <b>RIGHT</b> within 10 NM and return to BJJ VOR to the minimum holding altitude.									
Alt Set: IN (MB on req) Rwy Elev: 200 MB Trans level: FL 195 Trans alt: 18500'									
CAUTION: Do not use radio altimeter as reference to determine the altitude over the airport due to orographic conditions.									



Gnd speed-Kts	70	90	100	120	140	160	PAPI-L	↑ on <b>115.8</b> <b>R-132</b>	<b>D7.0</b>
Descent Angle 3.02°	374	481	534	641	748	855			
MAP at VOR									

STRAIGHT-IN LANDING RWY 13			CIRCLE-TO-LAND		
MDA(H) <b>6500'</b> (545')			MDA(H)		
A			Max Kts 90	<b>6560'</b> (604') - 1	
B	1		120	<b>6720'</b> (764') - 2 1/4	
C		1 1/2	140	<b>6880'</b> (924') - 3	
D		1 3/4	165		

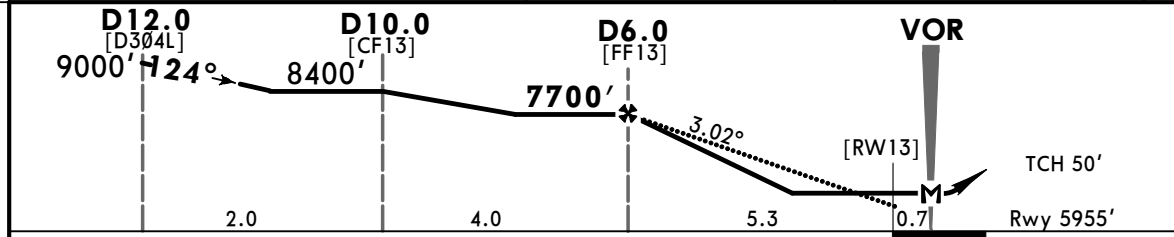
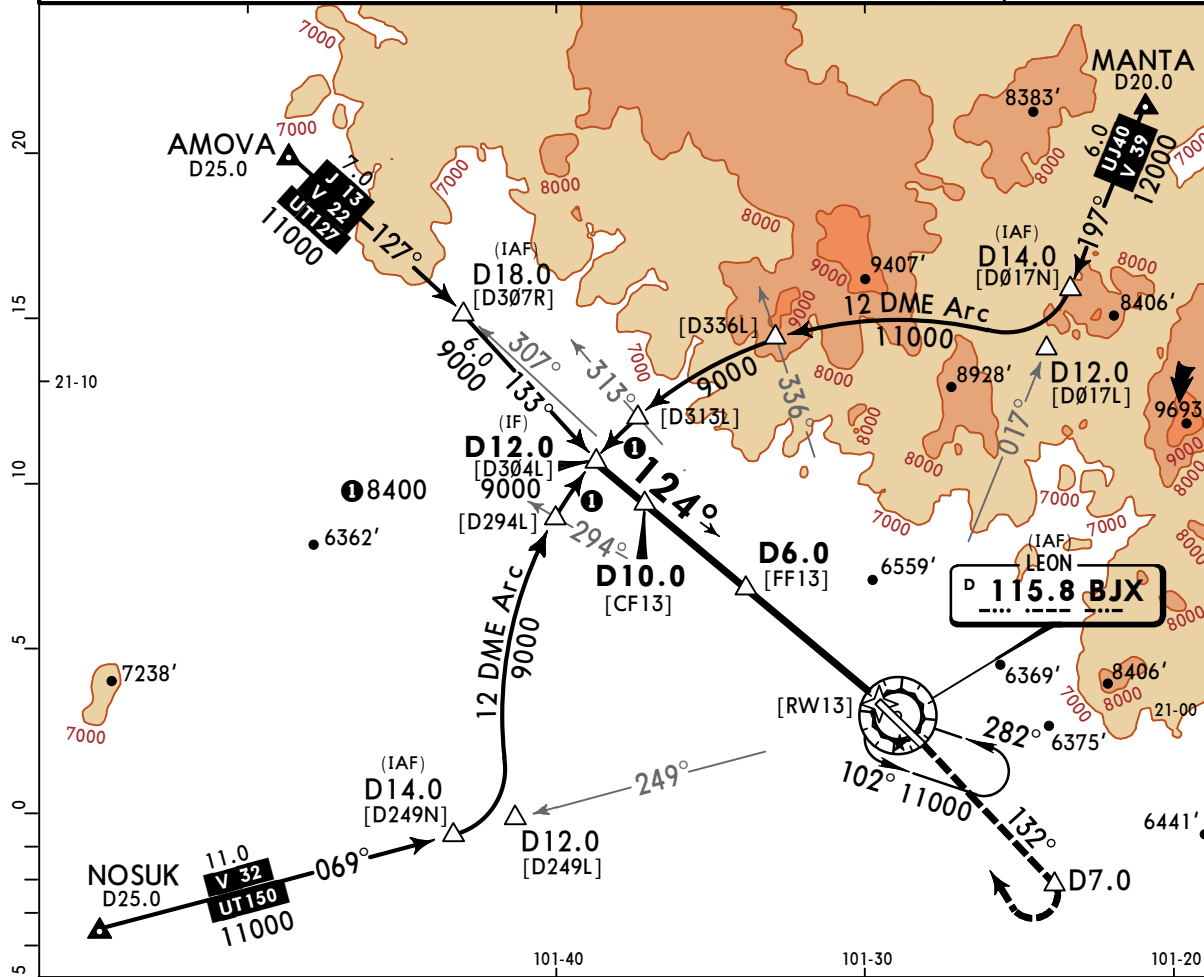
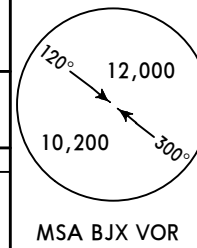
CHANGES: Comms, chart format.

**MMLO/BJX**  
DE GUANAJUATO INTL

**JEPPESSEN**  
23 DEC 22 **13-2** Eff 29 Dec

**LEON, MEXICO**  
VOR DME 2 Rwy 13

*ATIS <b>128.4</b>		*LEON Approach (R) <b>119.4</b>		*AGUASCALIENTES Approach (R) <b>119.05</b>		*LEON Tower <b>118.35</b>	
VOR BJX <b>115.8</b>	Final Apch Crs <b>124°</b>	D6.0 <b>7700'</b> (1745')		MDA(H) <b>6500'</b> (545')		Apt Elev 5956' Rwy 5955'	
<b>MISSED APCH:</b> Climb on BJJ VOR R-132 to D7.0, turn RIGHT within 10 NM and return to BJJ VOR to the minimum holding altitude.							
Alt Set: IN/MB on Req) Rwy Elev: 200 MB Trans level: FL 195 Trans alt: 18500'							
1. CAUTION: Do not use radio altimeter as reference to determine the altitude over the airport due to orographic conditions. 2. In case of DME failure at any point during the procedure, maintain last altitude and proceed to the station in accordance with ATC instructions.							



Gnd speed-Kts	70	90	100	120	140	160	PAPI-L	↑ on <b>115.8</b> <b>R-132</b>	<b>D7.0</b>
Descent Angle 3.02°	374	481	534	641	748	855			
MAP at VOR									

STRAIGHT-IN LANDING RWY13			CIRCLE-TO-LAND		
MDA(H) <b>6500'</b> (545')			Max Kts	MDA(H)	
A		1	90	<b>6560'</b> (604') - 1	
B		1½	120	<b>6720'</b> (764') - 2 ¼	
C		1¾	140	<b>6880'</b> (924') - 3	
D			165		

CHANGES: Comms.

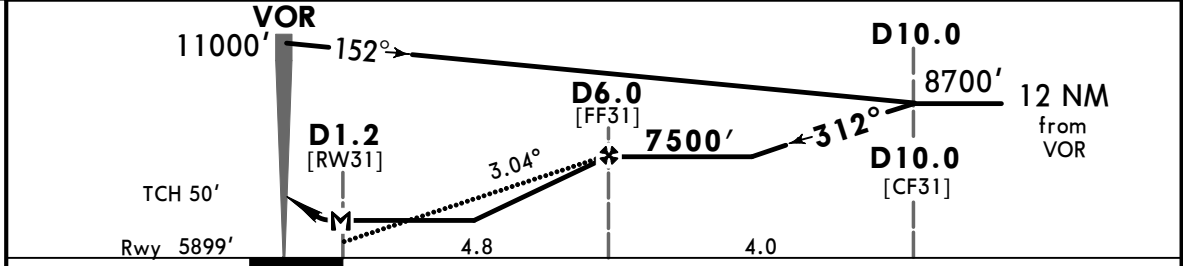
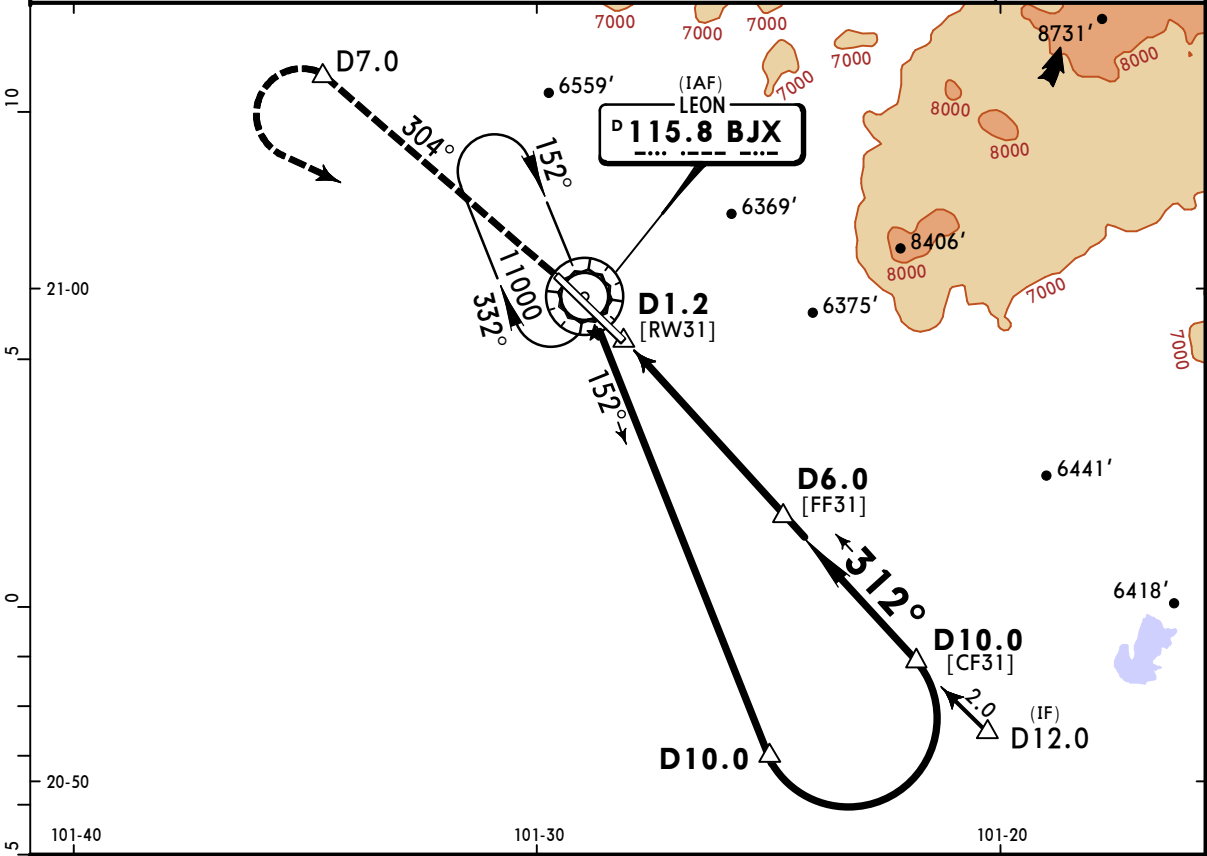


**MMLO/BJX**  
DE GUANAJUATO INTL

**JEPPESSEN**  
23 DEC 22 **13-3** Eff 29 Dec

**LEON, MEXICO**  
VOR DME 1 Rwy 31

*ATIS <b>128.4</b>		*LEON Approach (R) <b>119.4</b>		*AGUASCALIENTES Approach (R) <b>119.05</b>		*LEON Tower <b>118.35</b>		
VOR BJJ <b>115.8</b>	Final Apch Crs <b>312°</b>	D6.0 <b>7500'</b> (1601')	MDA(H) <b>6400'</b> (501')	Apt Elev 5956' Rwy 5899'		<p>MSA BJJ VOR</p>		
<p><b>MISSED APCH:</b> Climb outbound on BJJ VOR R-304 to D7.0, turn LEFT within 10 NM and return to BJJ VOR to the minimum holding altitude.</p>								
<p>Alt Set: IN (MB on req) Rwy Elev: 198 MB Trans level: FL 195 Trans alt: 18500'</p> <p>CAUTION: Do not use radio altimeter as reference to determine the altitude over the airport due to orographic conditions.</p>								



Gnd speed-Kts	70	90	100	120	140	160	PAPI-L	↑ on BJJ <b>115.8</b> R-304	D7.0
Descent Angle 3.04°	376	484	538	645	753	861			
MAP at D1.2									

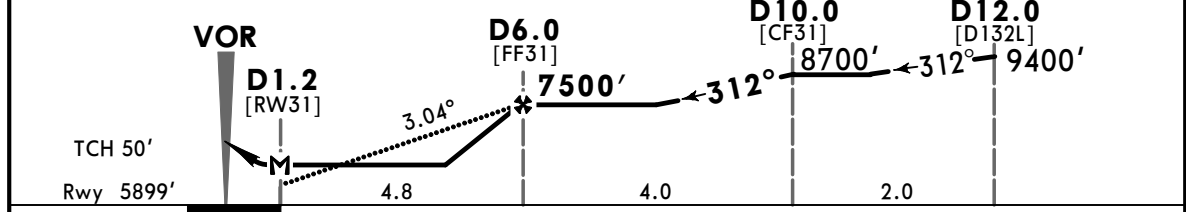
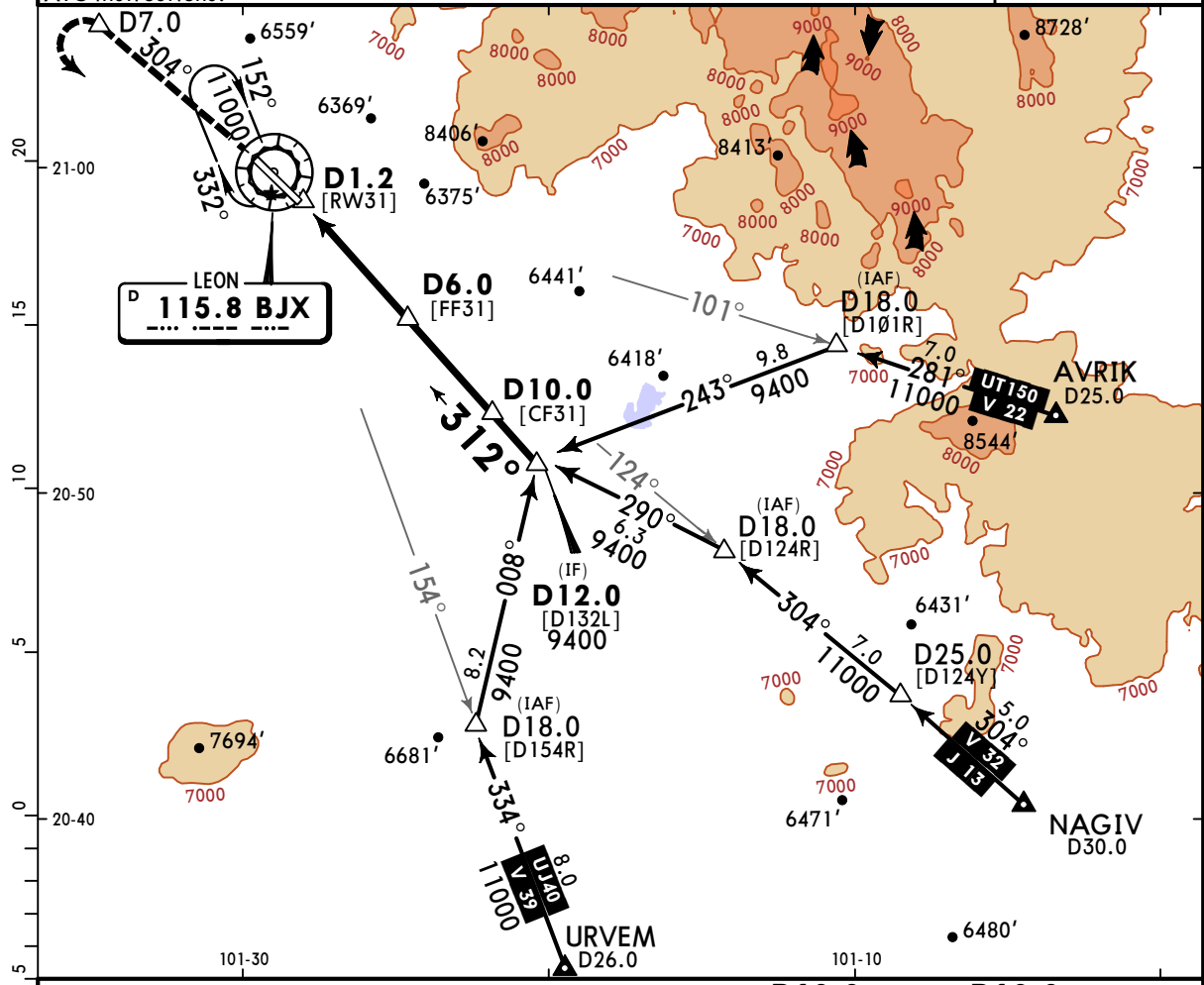
STRAIGHT-IN LANDING RWY 31			CIRCLE-TO-LAND		
MDA(H) <b>6400'</b> (501')			MDA(H)		
A	1		Max Kts		
B	1		90	<b>6560'</b> (604') -1	
C	1½		120	<b>6720'</b> (764') -2¼	
D	1½		140	<b>6720'</b> (764') -2¼	
			165	<b>6880'</b> (924') -3	

# MMLO/BJX DE GUANAJUATO INTL

JEPPESSEN  
23 DEC 22 **13-4** Eff 29 Dec

# LEON, MEXICO VOR DME 2 Rwy 31

*ATIS <b>128.4</b>	*LEON Approach (R) <b>119.4</b>	*AGUASCALIENTES Approach (R) <b>119.05</b>	*LEON Tower <b>118.35</b>
VOR BJJ <b>115.8</b>	Final Apch Crs <b>312°</b>	D6.0 <b>7500'</b> (1601')	MDA(H) <b>6400'</b> (501') Apt Elev 5956' Rwy 5899'
<b>MISSED APCH:</b> Climb outbound on BJJ VOR R-304 to D7.0, turn LEFT within 10 NM and return to BJJ VOR to the minimum holding altitude.			
Alt Set: IN (MB on Req) Rwy Elev: 198 MB Trans level: FL 195 Trans alt: 18500' 1. CAUTION: Do not use radio altimeter as reference to determine the altitude over the airport due to orographic conditions. 2. In case of DME failure at any point during the procedure, maintain last altitude and proceed to the station in accordance with ATC instructions.			



Gnd speed-Kts	70	90	100	120	140	160	PAPI-L	↑ on <b>115.8</b> <b>R-304</b>	<b>D7.0</b>
Descent Angle 3.04°	376	484	538	645	753	861			
MAP at D1.2									

STRAIGHT-IN LANDING RWY31		CIRCLE-TO-LAND	
MDA(H) <b>6400'</b> (501')		Max Kts	MDA(H)
A	1  1½	90	<b>6560'</b> (604') - 1
B		120	<b>6720'</b> (764') - 2¼
C		140	<b>6880'</b> (924') - 3
D		165	

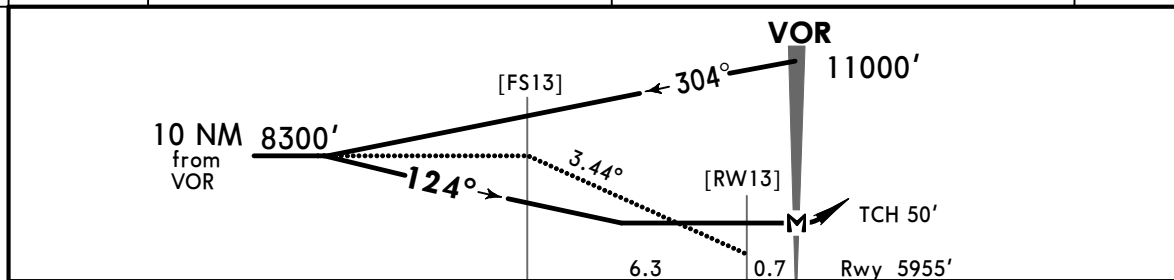
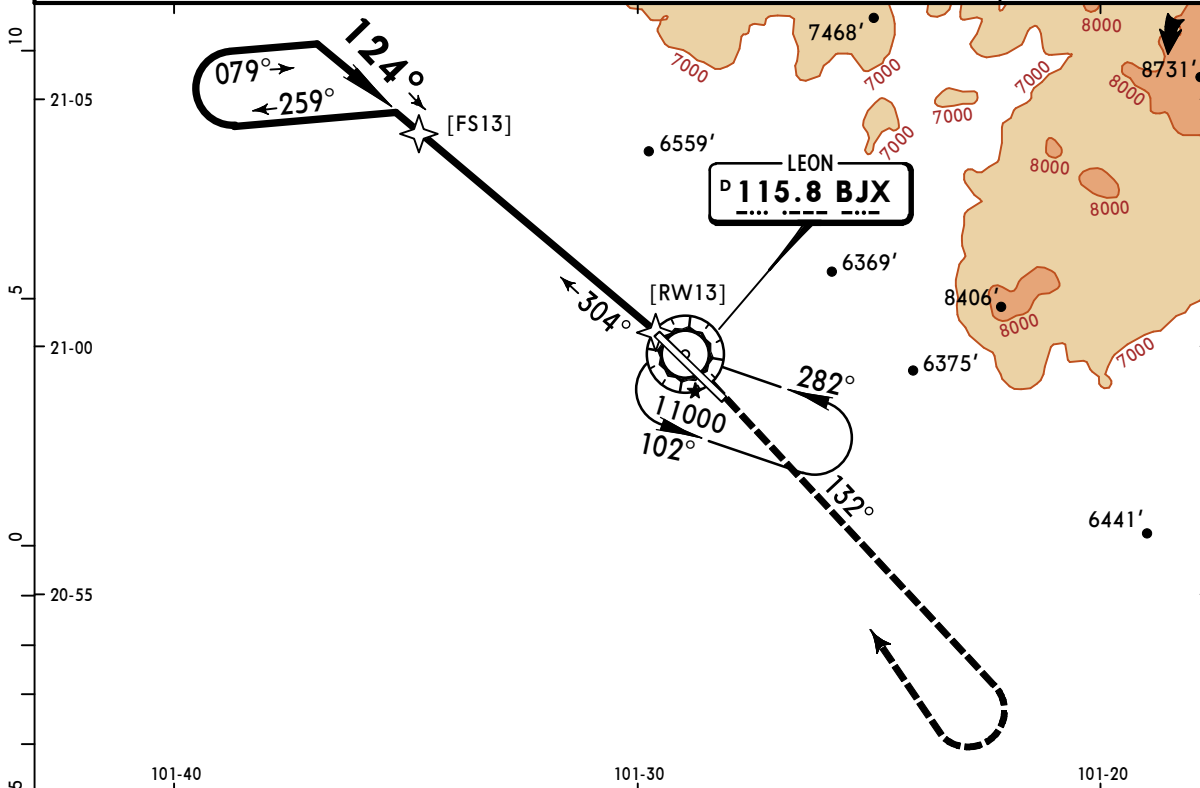
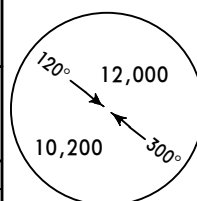
CHANGES: Comms.

**MMLO/BJX**  
DE GUANAJUATO INTL

**JEPPESEN**  
23 DEC 22 **(13-5) Eff 29 Dec**

**LEON, MEXICO**  
VOR Rwy 13

*ATIS <b>128.4</b>	*LEON Approach (R) <b>119.4</b>	*AGUASCALIENTES Approach (R) <b>119.05</b>	*LEON Tower <b>118.35</b>
VOR BJX <b>115.8</b>	Final Apch Crs <b>124°</b>	No FAF	MDA(H) <b>7160'</b> (1205')
			Apt Elev 5956' Rwy 5955'
<b>MISSED APCH:</b> Climb outbound on BJJ VOR R-132, turn RIGHT within 10 NM and return to BJJ VOR to the minimum holding altitude.			
MISSED APCH: Max Distance Outbound Track 7 NM			
Gnd Speed-Kts	80	100	120
Time	5:15	4:12	3:30
		3:00	2:37
		2:20	2:06
Alt Set: IN (MB on req) Rwy Elev: 200 MB Trans level: FL 195 Trans alt: 18500'			
<b>CAUTION:</b> Do not use radio altimeter as reference to determine the altitude over the airport due to orographic conditions.			



Gnd speed-Kts	70	90	100	120	140	160			
Descent Angle 3.44°	426	548	609	730	852	974			
MAP at VOR									

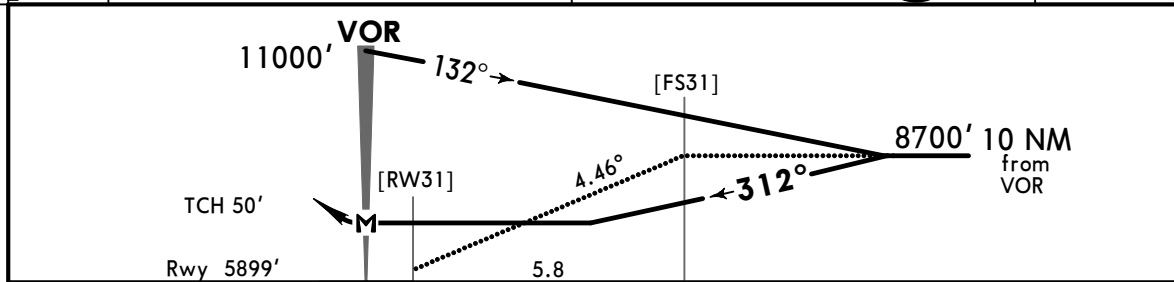
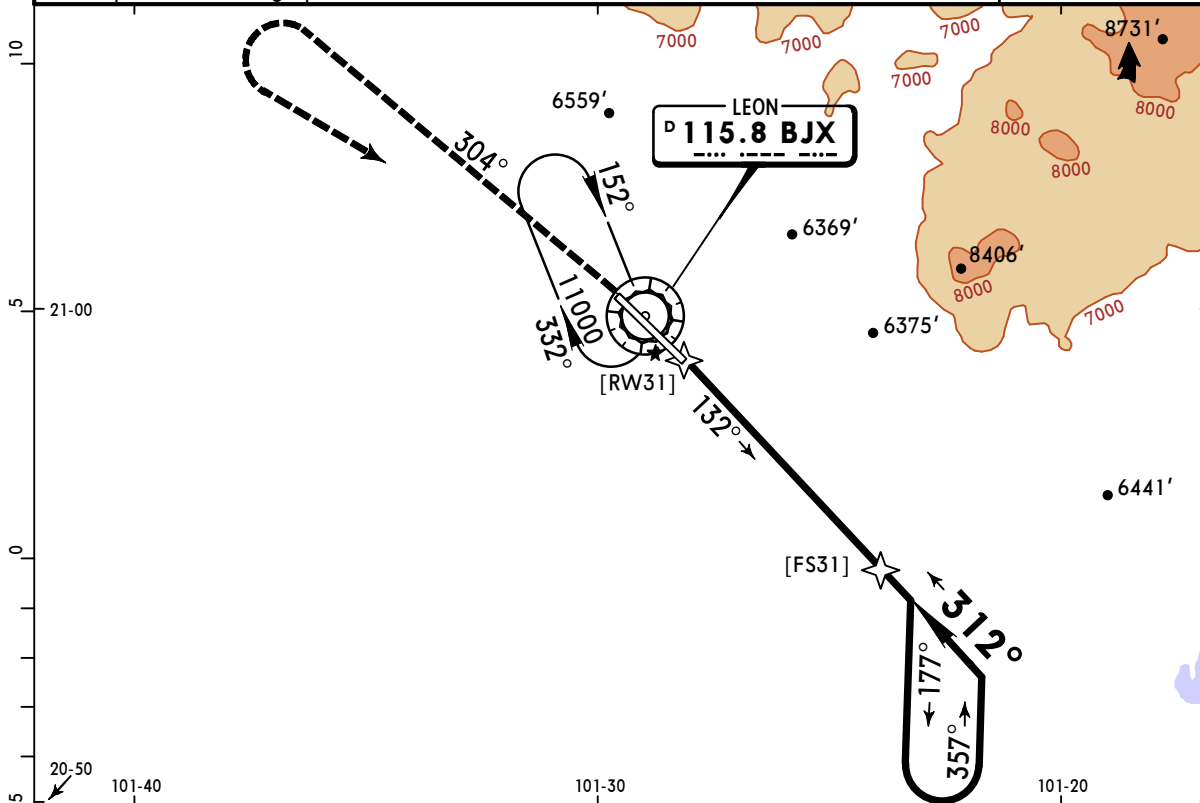
<b>STRAIGHT-IN LANDING RWY 13</b>				<b>CIRCLE-TO-LAND</b>			
MDA(H) <b>7160'</b> (1205')				Max Kts			
A	1¼			90	7160' (1204') - 1¼		
B	1½			120	7160' (1204') - 1½		
C	3			140	7160' (1204') - 3		
D				165			

**MMLO/BJX**  
DE GUANAJUATO INTL

**JEPPESEN**  
23 DEC 22 **13-6** Eff 29 Dec

**LEON, MEXICO**  
VOR Rwy 31

*ATIS <b>128.4</b>		*LEON Approach (R) <b>119.4</b>		*AGUASCALIENTES Approach (R) <b>119.05</b>		*LEON Tower <b>118.35</b>																
VOR BJX <b>115.8</b>	Final Apch Crs <b>312°</b>	No FAF		MDA(H) <b>6960'</b> (1061')	Apt Elev 5956' Rwy 5899'																	
<b>MISSED APCH:</b> Climb outbound on BJX VOR R-304, turn LEFT within 10 NM and return to BJX VOR to the minimum holding altitude.																						
MISSED APCH: Max Distance Outbound Track 7 NM																						
<table border="1"> <tr> <th>Gnd speed-Kts</th> <td>80</td> <td>100</td> <td>120</td> <td>140</td> <td>160</td> <td>180</td> <td>200</td> </tr> <tr> <th>Time</th> <td>5:15</td> <td>4:12</td> <td>3:30</td> <td>3:00</td> <td>2:37</td> <td>2:20</td> <td>2:06</td> </tr> </table>								Gnd speed-Kts	80	100	120	140	160	180	200	Time	5:15	4:12	3:30	3:00	2:37	2:20
Gnd speed-Kts	80	100	120	140	160	180	200															
Time	5:15	4:12	3:30	3:00	2:37	2:20	2:06															
Alt Set: IN (MB on req)		Rwy Elev: 198 MB		Trans level: FL 195		Trans alt: 18500'																
<b>CAUTION:</b> Do not use radio altimeter as reference to determine the altitude over the airport due to orographic conditions.																						



Gnd speed-Kts	70	90	100	120	140	160	PAPI-L	
Descent Angle	4.46°	553	711	790	948	1106		
MAP at VOR								

STRAIGHT-IN LANDING RWY 31			CIRCLE-TO-LAND		
MDA(H) <b>6960'</b> (1061')			MDA(H)		
A	1¼		Max Kts	90	
B	1½			7160' (1204') - 1¼	
C	3			7160' (1204') - 1½	
D				7160' (1204') - 3	