

## General Information

Location: CHIHUAHUA MEX  
ICAO/IATA: MMCU / CUU  
Lat/Long: N28° 42.1', W105° 57.8'  
Elevation: 4465 ft

Airport Use: Public  
Daylight Savings: Observed  
UTC Conversion: +6:00 = UTC  
Magnetic Variation: 8.0° E  
Sectional Chart: El Paso

Fuel Types: 100-130 Octane, Jet A  
Customs: Yes  
Airport Type: IFR  
Landing Fee: No  
Control Tower: Yes  
Jet Start Unit: No  
LLWS Alert: No  
Beacon: Yes

Sunrise: 1232 Z  
Sunset: 0146 Z

## Runway Information

Runway: 05  
Length x Width: 3445 ft x 98 ft  
Surface Type: asphalt  
TDZ-Elev: 4449 ft

Runway: 18L  
Length x Width: 8530 ft x 148 ft  
Surface Type: asphalt  
TDZ-Elev: 4416 ft  
Lighting: Edge

Runway: 18R  
Length x Width: 7776 ft x 75 ft  
Surface Type: asphalt  
TDZ-Elev: 4406 ft

Runway: 23  
Length x Width: 3445 ft x 98 ft  
Surface Type: asphalt

TDZ-Elev: 4432 ft

Runway: 36L

Length x Width: 7776 ft x 75 ft

Surface Type: asphalt

TDZ-Elev: 4462 ft

Runway: 36R

Length x Width: 8530 ft x 148 ft

Surface Type: asphalt

TDZ-Elev: 4465 ft

Lighting: Edge, ALS

## Communication Information

ATIS: 127.900

Chihuahua Tower: 118.400

Chihuahua Approach: 121.000

Mazatlan Control ACC: 124.400 RCO

Monterrey Control ACC: 125.600 RCO

Monterrey Control ACC: 126.400 RCO

TMA

24 NOV 23

10-1B

CHIHUAHUA, MEXICO

GEN DIV P A ROBERTO FIERRO VILLALOBOS INTL



*ATIS 127.9	*CHIHUAHUA Approach 121.0
----------------	------------------------------

**SPEED RESTRICTIONS WITHIN MEXICO AIRSPACE**

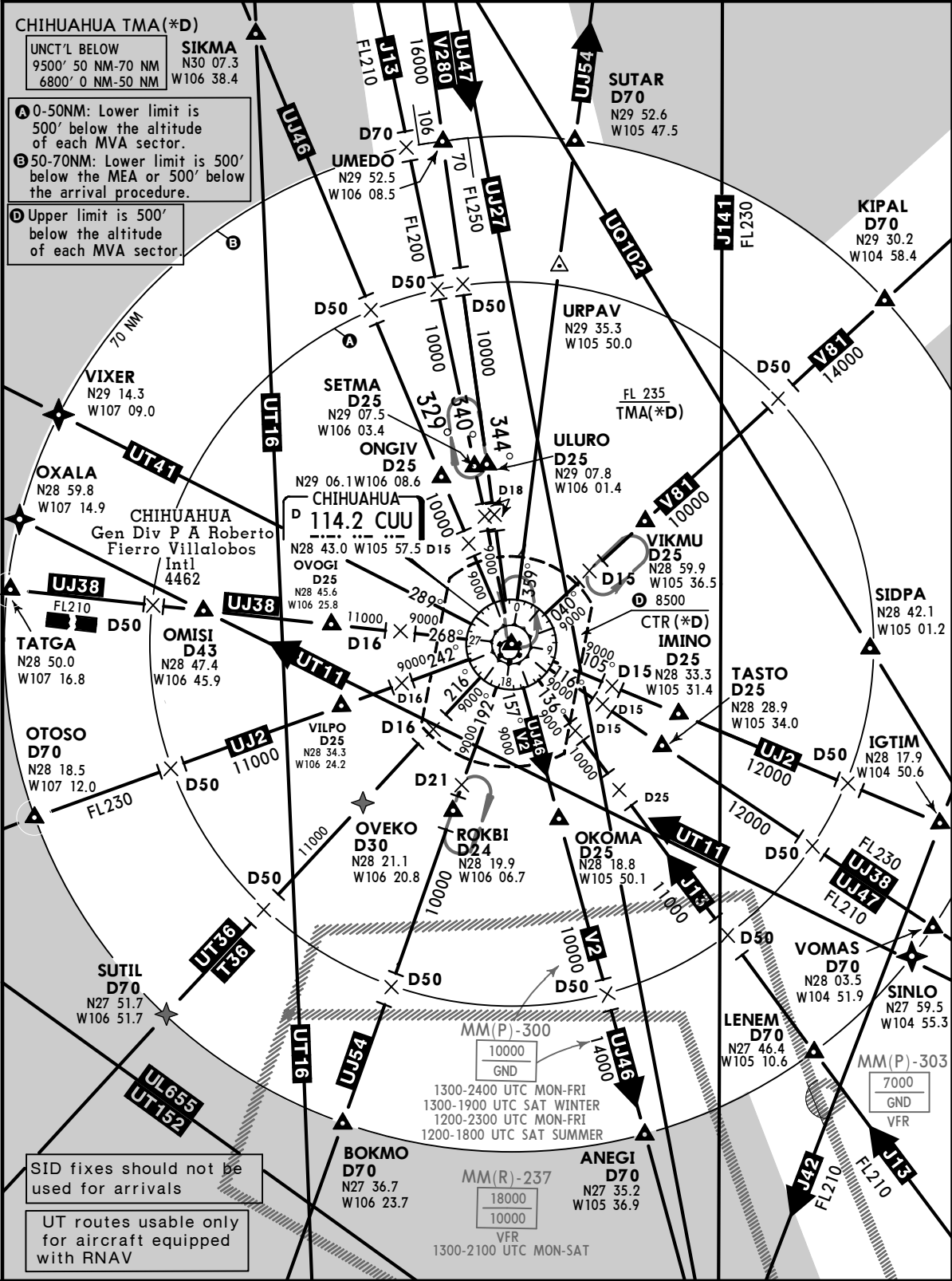
**MAXIMUM IAS UNLESS OTHERWISE DEPICTED OR AUTHORIZED BY ATC**  
 Below 3000' AGL within 10 NM of any airport.....200 KTS  
 Below 10000' MSL within Mexico Airspace.....250 KTS  
 Below 10000' AGL within 30 NM of any airport.....250 KTS  
**WITHIN CHIHUAHUA TMA**  
 At or below 7500' MSL within 10 NM of CUU VORDME.....200 KTS  
 At or below 14500' MSL within 30 NM of CUU VORDME.....250 KTS

CHIHUAHUA TMA(\*D)

UNCT'L BELOW  
 9500' 50 NM-70 NM  
 6800' 0 NM-50 NM

SIKMA  
 N30 07.3  
 W106 38.4

- A 0-50NM: Lower limit is 500' below the altitude of each MVA sector.
- B 50-70NM: Lower limit is 500' below the MEA or 500' below the arrival procedure.
- D Upper limit is 500' below the altitude of each MVA sector.



SID fixes should not be used for arrivals  
 UT routes usable only for aircraft equipped with RNAV

CHANGES: ATIS system.

© JEPPESEN, 2002, 2023. ALL RIGHTS RESERVED.

MMCU/CUU

JEPPESEN

CHIHUAHUA, MEXICO

GEN DIV P A ROBERTO FIERRO VILLALOBOS INTL

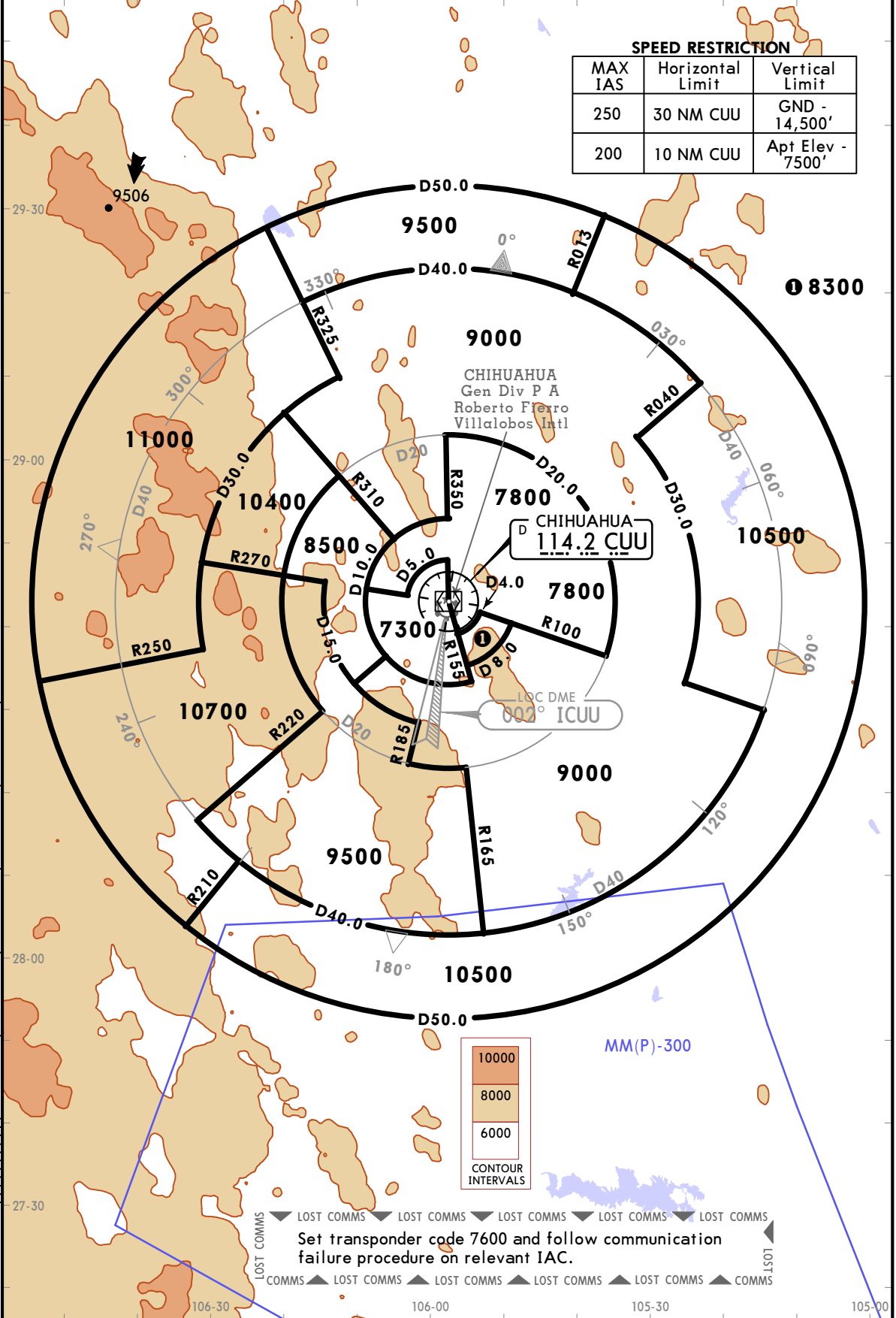
14 JUN 19

10-1R

Eff 20 Jun

RADAR MINIMUM ALTITUDES

*CHIHUAHUA Approach (R) <b>121.0</b>	Apt Elev <b>4465</b>	Alt Set: IN (MB on req) Trans level: FL 195 Trans alt: 18500'
1. These are the lowest MVAs that can be assigned by the controller in a sector when RADAR control procedures (vectors) are applied, without affecting routes and procedures with lower minimums. 2. All aircraft operating under VFR within this TMA should have transponder mode 3 A/C with 4096 code capabilities. 3. Exclusive use chart to verify assigned altitudes to identified aircraft.		



CHANGES: Multiple waypoints removed.

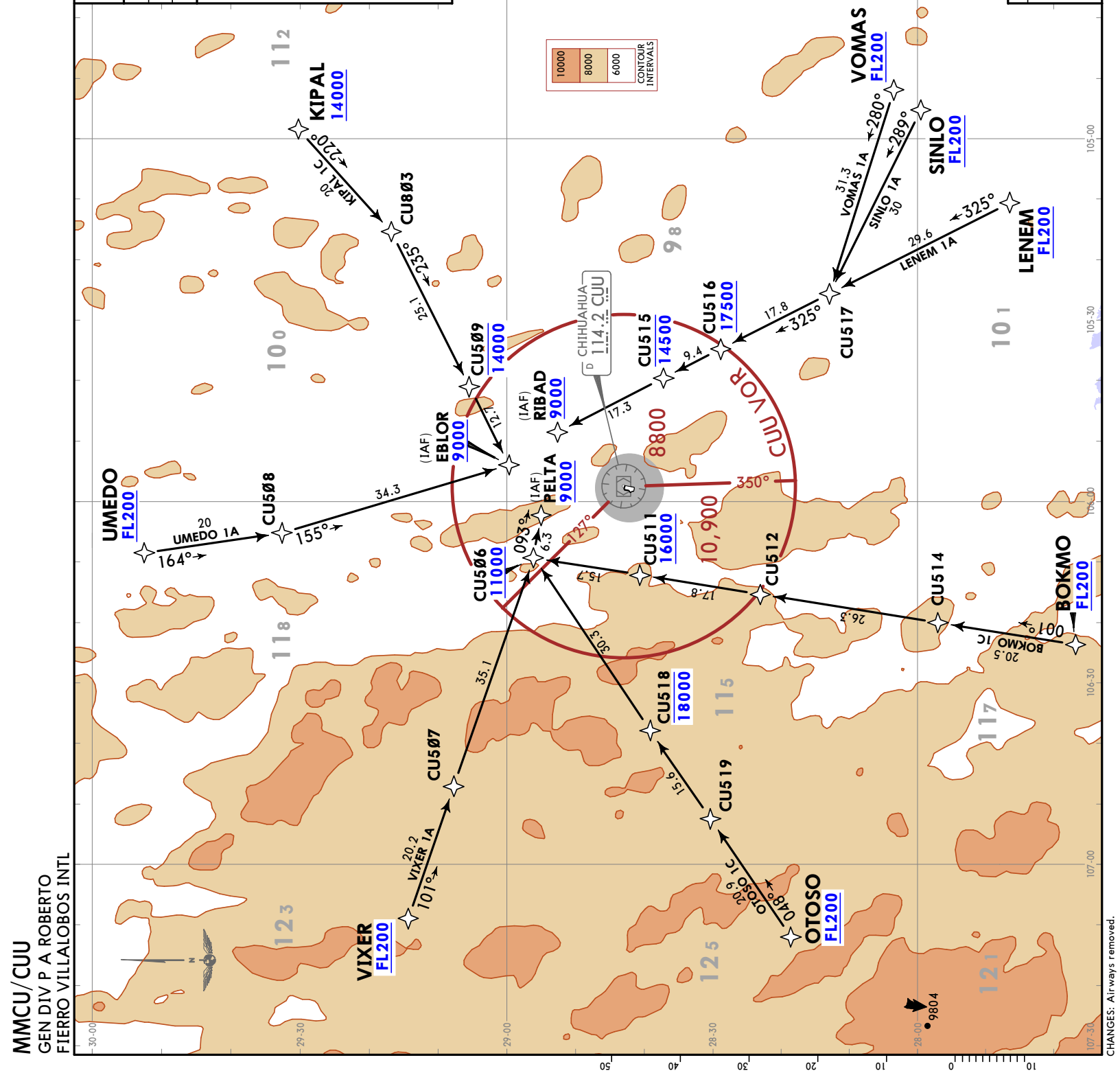
© JEPPESEN, 2003, 2019. ALL RIGHTS RESERVED.

CHIHUAHUA,  
MEXICO

**JEPPesen**  
18 FEB 22 **10-2** Eff 24 Feb  
RNAV STAR

\*ATIS  
127.9  
Apt Elev  
4465  
Alt Set: IN (MB on req) Trans level: FL195  
RNAV 1 GNSS required  
RADAR required.

BOKMO 1C [BOKM01C] [BOKM1C]  
KIPAL 1C [KIPAL1C] [KIPA1C]  
LENEM 1A [LENEM1A] [LENE1A]  
OTOSO 1C [OTOSO1C] [OTOS1C]  
SINLO 1A [SINLO1A] [SINL1A]  
UMEDO 1A [UMEDO1A] [UMED1A]  
VIXER 1A [VIXER1A] [VIXE1A]  
VOMAS 1A [VOMAS1A] [VOMA1A]  
RNAV ARRIVALS  
(RWY 18L)



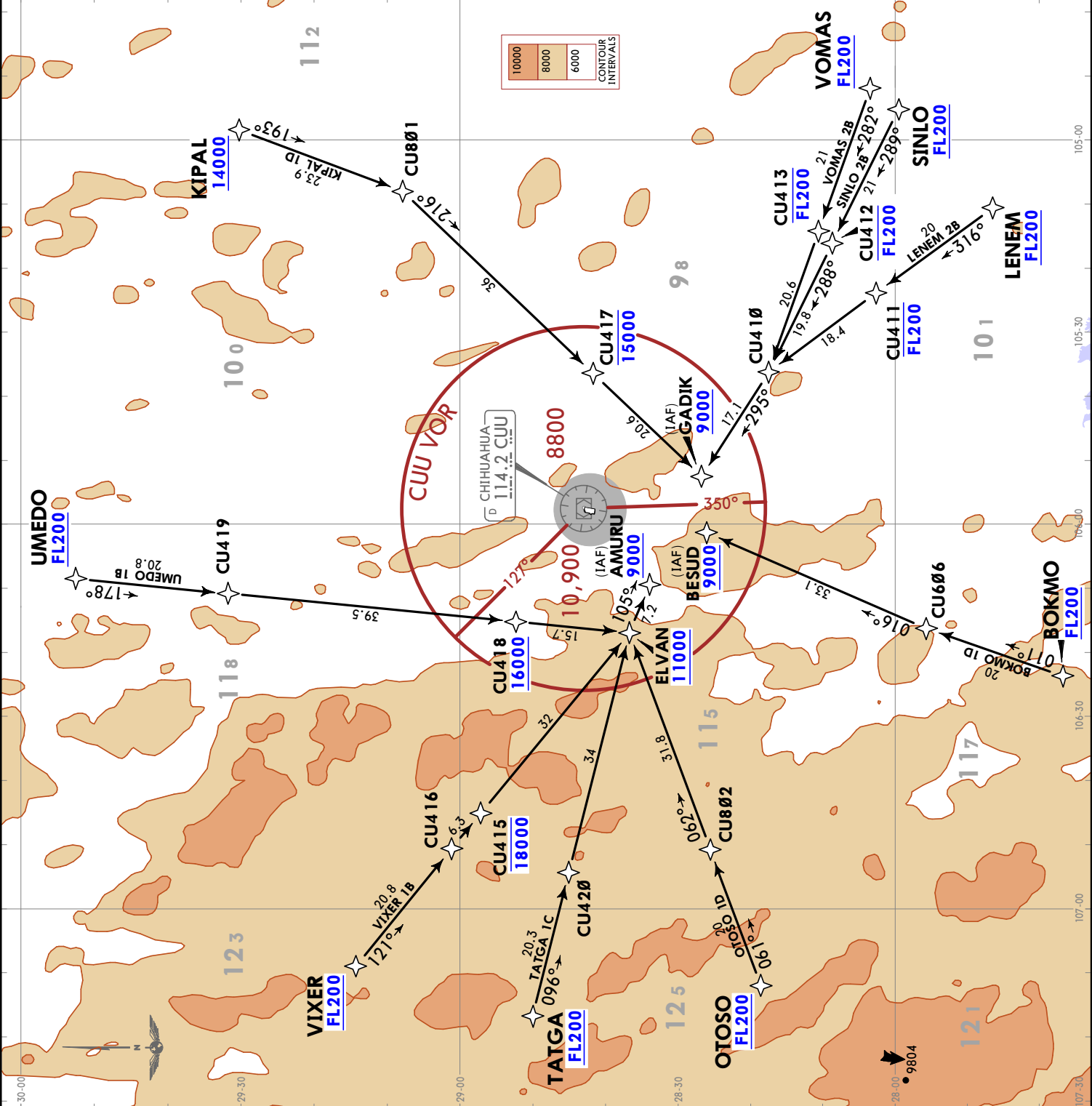
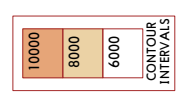
MMCU/CUU  
GEN DIV P A ROBERTO  
FIERRO VILALOBOS INTL

MMCU/CUU  
 GEN DIV P A ROBERTO  
 FIERRO VILALOBOS INTL

JEPPESEN  
 18 FEB 22  
 10-2A  
 EFF 24 Feb  
 RNAV STAR

CHIHUAHUA, MEXICO  
 RNAV STAR

*ATIS	127.9	Apt Elev	4465
Alt Set: IN (MB on req)	Trans level: FL195		
RNAV 1	GNSS required		
RADAR required.			
BOKMO 1D (BOKM01D) [BOKM1D] KIPAL 1D (KIPAL1D) [KIPA1D] LENEM 2B (LENEM2B) [LENE2B] OTOSO 1D (OTOSO1D) [OTOS1D] SINLO 2B (SINLO2B) [SINL2B] TATGA 1C (TATGA1C) [TATG1C] UMEDO 1B (UMEDO1B) [UMED1B] VIXER 1B (VIXER1B) [VIXE1B] VOMAS 2B (VOMAS2B) [VOMA2B] RNAV ARRIVALS (RWY 36R)			



**ROUTING**  
 From BOKMO, KIPAL, LENEM, OTOSO, SINLO, TATGA, UMEDO, VIXER or VOMAS continue to the waypoints, altitudes and tracks shown, to the corresponding IAF and continue on approach procedure or according to ATC instructions.

**CHIHUAHUA, MEXICO**  
**JEPPESEN**  
 13 MAY 22 (10-3) Eff 19 May  
**SID**

Apt Elev  
**4465**  
 Trans alt: 18500

**CHIHUAHUA 4A (CUU4A) [CUU4A]**  
**IMINO 1A (IMINO1A) [IMIN1A]**  
**OKOMA 1 (OKOMA1) [OKOMA1]**  
**OVEKO 1 (OVEKO1) [OVEKO1]**  
**OVOGI 2 (OVOGI2) [OVOGI2]**  
**ROKBI 2 (ROKBI2) [ROKBI2]**  
**TASTO 1A (TASTO1A) [TAST1A]**  
**VILPO 1 (VILPO1) [VILPO1]**  
**DEPARTURES (RWY 18L)**

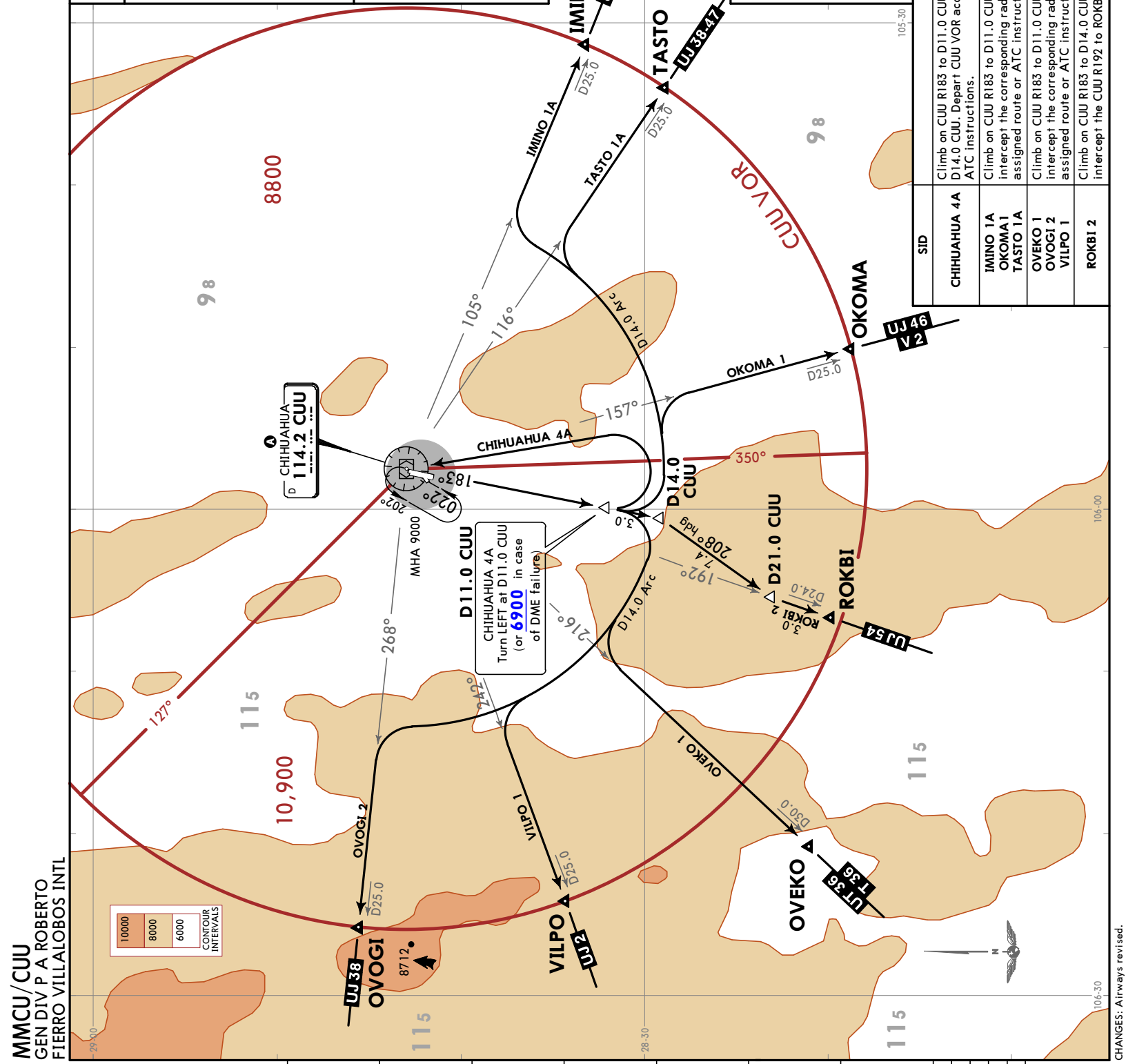
MINIMUM CROSSING ALTITUDES	
ALKEM V-81	9000
MOV 9000	9000
RUDLO 9000	9000
ELQ 9000	9000
CUL 1000	1000
NABAS 9000	9000
CEN 1000	1000
HMO 9000	9000
CJS 10000	10000
BECON 9000	9000
CJS 9000	9000
UJ-54	9000

These SIDs require minimum climb gradients:

CHIHUAHUA 4A: 230 per NM (3.78%) to 10000.  
 IMINO 1A, OKOMA 1, TASTO 1A: 240 per NM (3.94%) to 10000.  
 OVEKO 1, OVOGI 2, ROKBI 2, VILPO 1: 280 per NM (4.60%) to 11000.

Gnd speed-KT	75	100	150	200	250	300
230 per NM	288	383	575	767	958	1150
240 per NM	300	400	600	800	1000	1200
280 per NM	350	467	700	933	1167	1400

SID	INITIAL CLIMB
CHIHUAHUA 4A	Climb on CUU R183 to D11.0 CUU (or 6900 in case of DME failure) turn LEFT within D14.0 CUU. Depart CUU VOR according to the minimum crossing altitude <b>A</b> or ATC instructions.
IMINO 1A OKOMA1 TASTO 1A	Climb on CUU R183 to D11.0 CUU, turn LEFT and proceed on the D14.0 Arc CUU to intercept the corresponding radial to IMINO, OKOMA or TASTO and continue on assigned route or ATC instructions.
OVEKO 1 OVOGI 2 VILPO 1	Climb on CUU R183 to D11.0 CUU, turn RIGHT and proceed on the D14.0 Arc CUU to intercept the corresponding radial to OVEKO, OVOGI or VILPO and continue on assigned route or ATC instructions.
ROKBI 2	Climb on CUU R183 to D14.0 CUU, turn RIGHT and proceed on 208° heading to intercept the CUU R192 to ROKBI and continue on assigned route or ATC instructions.



**MMCU/ CUU**  
 GEN DIV P A ROBERTO  
 FIERRO VILLOBOS INTL

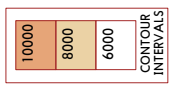
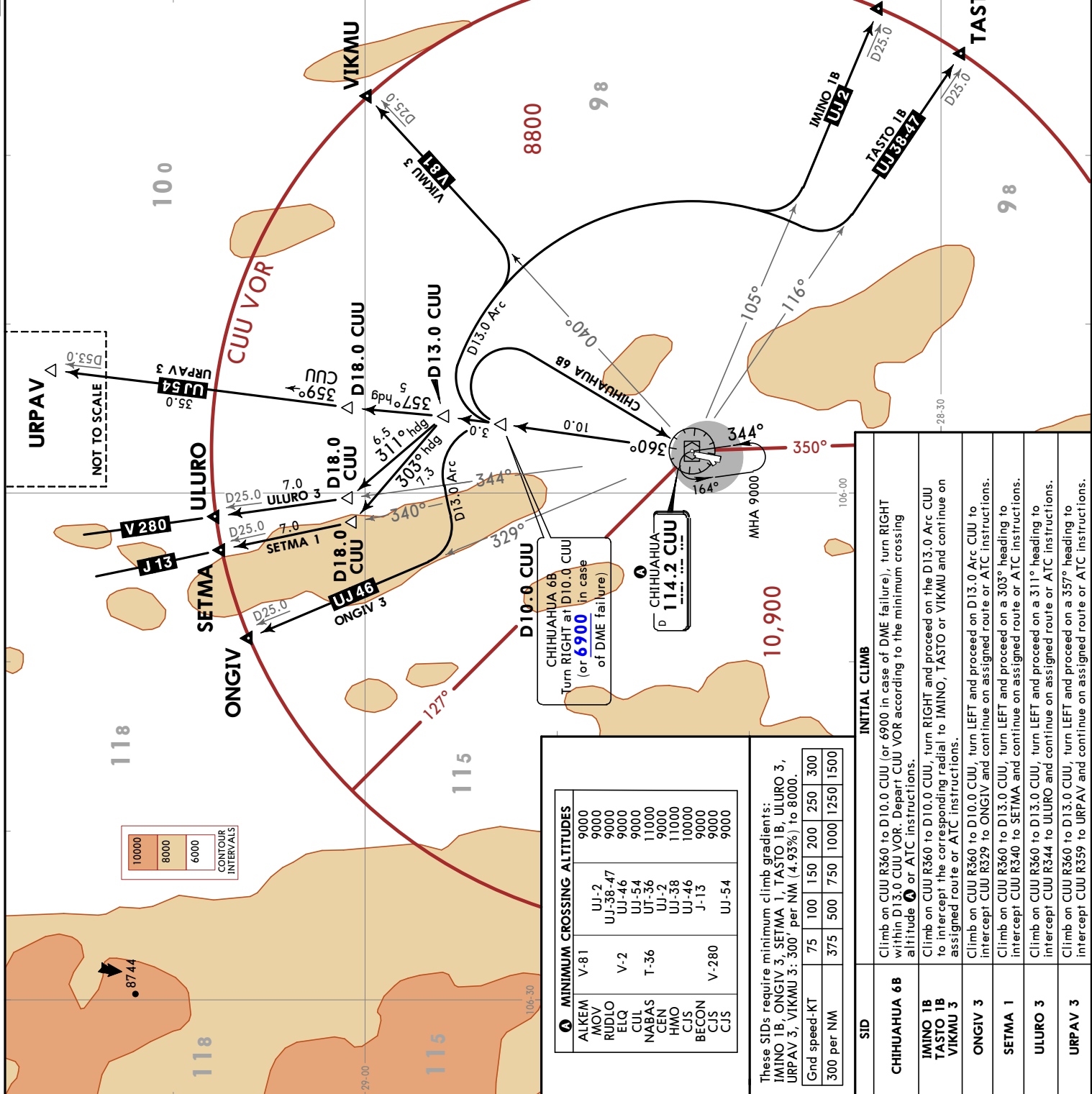


MMCU/CUU  
GEN DIV P A ROBERTO  
FIERRO VILALOBOS INTL

JEPPESEN  
13 MAY 22 (10-3A) EFF 19 May

CHIHUAHUA, MEXICO  
SID

Apt Elev 4465	Trans alt: 18500
CHIHUAHUA 6B (CUU6B) [CUU6B] IMINO 1B (IMINO1B) [IMINO1B] ONGIV 3 (ONGIV3) [ONGIV3] SETMA 1 (SETMA1) [SETMA1] TASTO 1B (TASTO1B) [TASTO1B] ULURO 3 (ULURO3) [ULURO3] URPAV 3 (URPAV3) [URPAV3] VIKMU 3 (VIKMU3) [VIKMU3] DEPARTURES (RWY 36R)	



ALKEM	V-81	9000
MOV	UJ-2	9000
RUDLO	UJ-38-47	9000
ELQ	UJ-46	9000
CUL	UJ-54	9000
NABAS	UT-36	11000
CEN	UJ-2	9000
HMO	UJ-58	10000
CJS	UJ-46	10000
BECON	J-13	9000
CJS	UJ-54	9000

These SIDs require minimum climb gradients:  
 IMINO 1B, ONGIV 3, SETMA 1, TASTO 1B, ULURO 3, URPAV 3, VIKMU 3: 300' per NM (4.93%) to 8000'.

Gnd speed-KT	75	100	150	200	250	300
300 per NM	375	500	750	1000	1250	1500

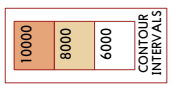
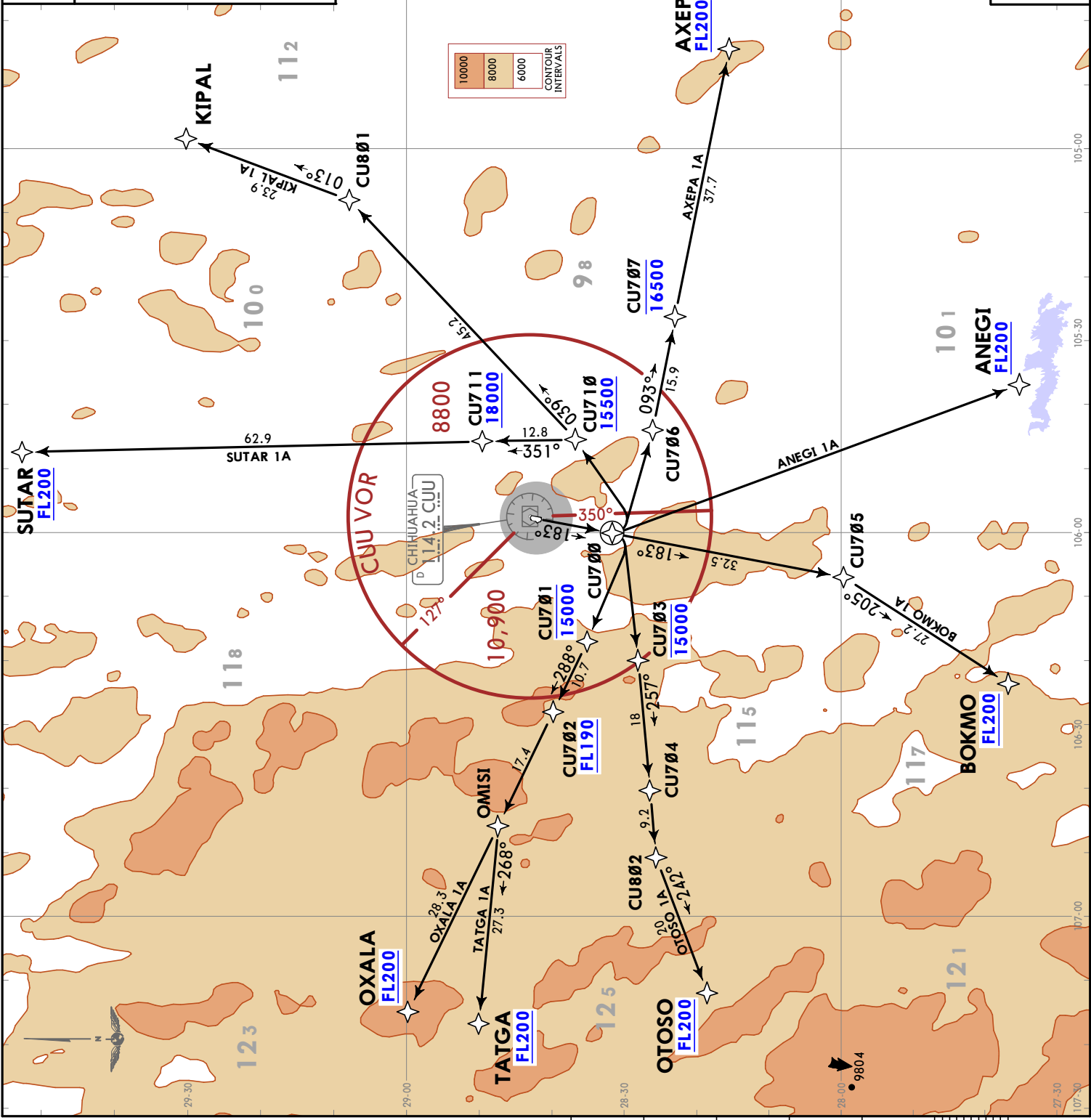
SID	INITIAL CLIMB
CHIHUAHUA 6B	Climb on CUU R360 to D10.0 CUU (or 6900 in case of DME failure), turn RIGHT within D13.0 CUU VOR. Depart CUU VOR according to the minimum crossing altitude or ATC instructions.
IMINO 1B TASTO 1B VIKMU 3	Climb on CUU R360 to D10.0 CUU, turn RIGHT and proceed on the D13.0 Arc CUU to intercept the corresponding radial to IMINO, TASTO or VIKMU and continue on assigned route or ATC instructions.
ONGIV 3	Climb on CUU R360 to D10.0 CUU, turn LEFT and proceed on D13.0 Arc CUU to intercept CUU R329 and continue on assigned route or ATC instructions.
SETMA 1	Climb on CUU R360 to D13.0 CUU, turn LEFT and proceed on a 303° heading to intercept CUU R340 to SETMA and continue on assigned route or ATC instructions.
ULURO 3	Climb on CUU R360 to D13.0 CUU, turn LEFT and proceed on a 311° heading to intercept CUU R344 to ULURO and continue on assigned route or ATC instructions.
URPAV 3	Climb on CUU R360 to D13.0 CUU, turn LEFT and proceed on a 357° heading to intercept CUU R359 to URPAV and continue on assigned route or ATC instructions.



Trans alt: 18500  
 RNAV 1 GNS required  
 RADAR required.

Apt Elev 4465

ANEGI 1A (ANEG1A) [ANEG1A]  
 AXEPA 1A (AXEPA1A) [AXEP1A]  
 BOKMO 1A (BOKMO1A) [BOKM1A]  
 KIPAL 1A (KIPAL1A) [KIPA1A]  
 OTOSO 1A (OTOSO1A) [OTOS1A]  
 OXALA 1A (OXALA1A) [OXAL1A]  
 SUTAR 1A (SUTAR1A) [SUTA1A]  
 TATGA 1A (TATGA1A) [TATG1A]  
 RNAV DEPARTURES  
 (RWY 18L)



These SIDs require a minimum climb gradient of 390 per NM (6.4%) until crossing 12000.

Grnd speed-KT	75	100	150	200	250	300
390 per NM	488	650	975	1300	1625	1950

**JEPPesen**  
18 FEB 22 10-3C Eff 24 Feb

**MMCU/CIU**  
GEN DIV P A ROBERTO  
FIERRO VILLALOBOS INTL

**CHIHUAHUA, MEXICO**  
RNAV SID

Trans alt: 18500
RNAV 1 GNS required
RADAR required.

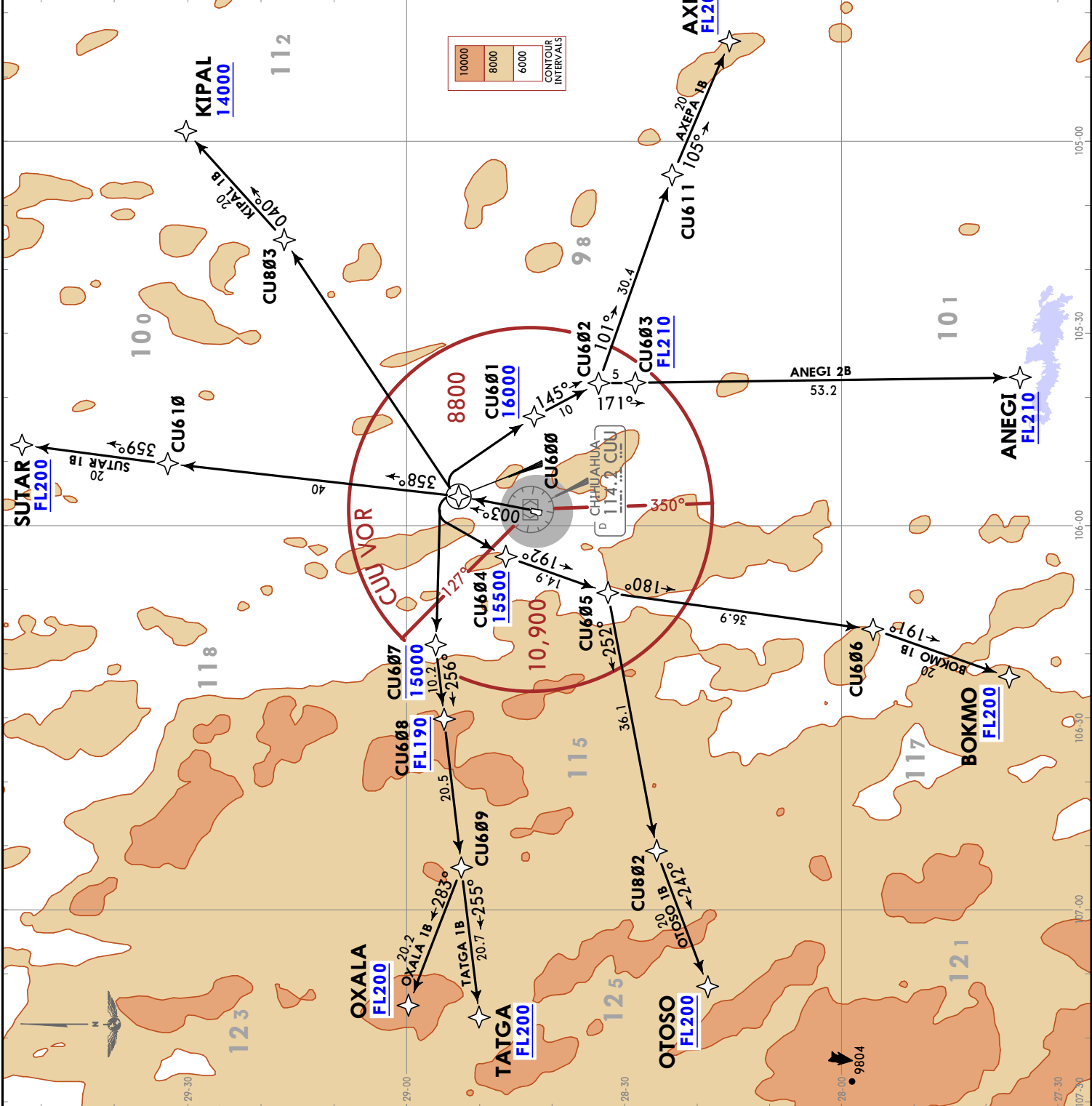
  

Apt Elev 4465
------------------

ANEG1 2B (ANEG12B) [ANEG2B]
AXEPA 1B (AXEPA 1B) [AXEP1B]
BOKMO 1B (BOKMO1B) [BOKM1B]
KIPAL 1B (KIPAL1B) [KIPA1B]
OTOSO 1B (OTOSO1B) [OTOS1B]
OXALA 1B (OXALA1B) [OXAL1B]
SUTAR 1B (SUTAR1B) [SUTA1B]
TATGA 1B (TATGA1B) [TATG1B]

RNAV DEPARTURES  
(RWY 36R)



These SIDs require a minimum climb gradient of 390 per NM (6.4%) until crossing 12000.

Grnd speed-KT	75	100	150	200	250	300
390 per NM	488	650	975	1300	1625	1950

MMCU/CUU

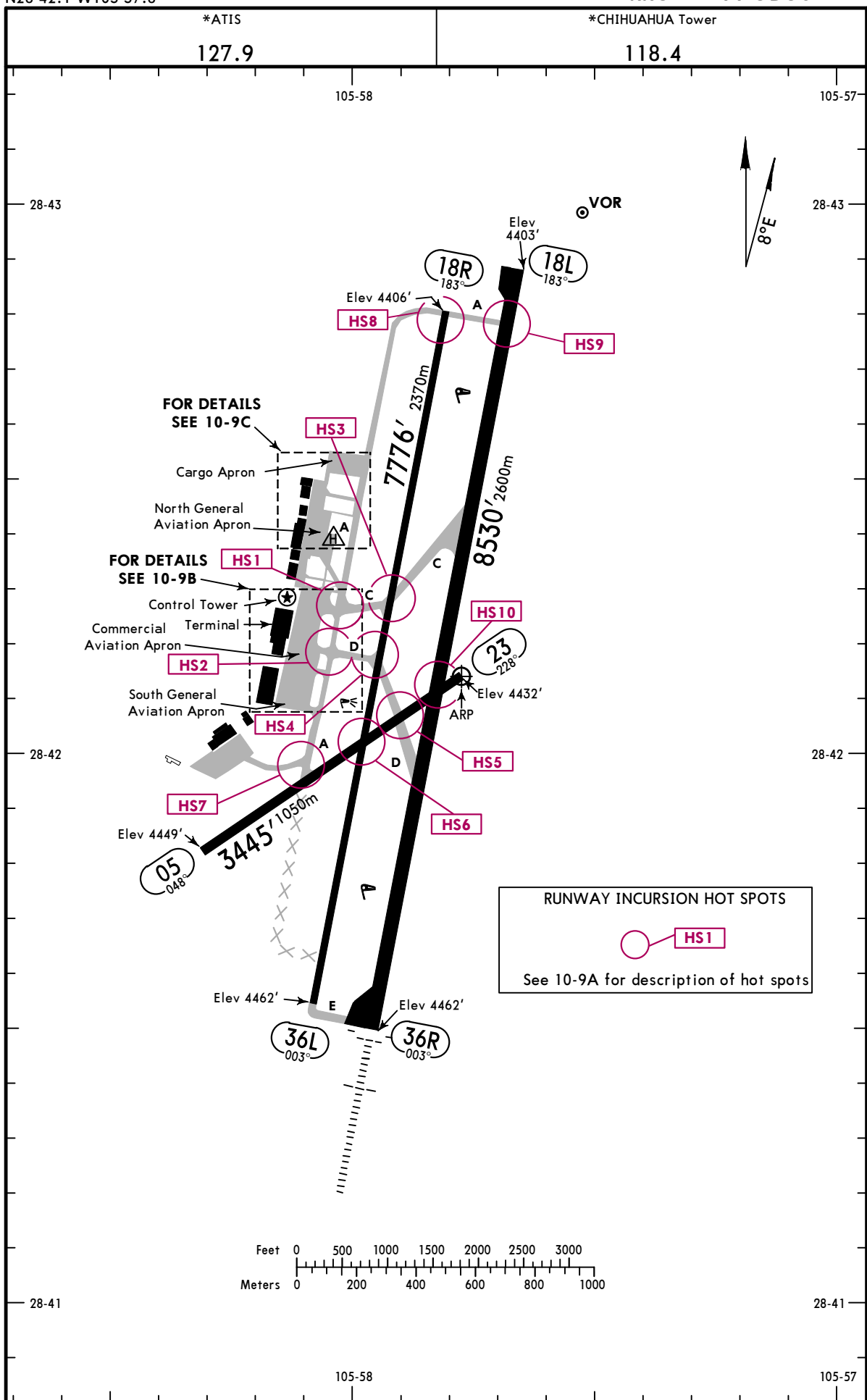
JEPPESSEN

CHIHUAHUA, MEXICO

Apt Elev 4465'  
N28 42.1 W105 57.8

19 JAN 24 (10-9) Eff 25 Jan

GEN DIV P A ROBERTO  
FIERRO VILLALOBOS INTL



\*ATIS  
127.9

\*CHIHUAHUA Tower  
118.4

FOR DETAILS  
SEE 10-9C

FOR DETAILS  
SEE 10-9B

RUNWAY INCURSION HOT SPOTS

See 10-9A for description of hot spots

MMCU/CUU



CHIHUAHUA, MEXICO

GEN DIV P A ROBERTO

FIERRO VILLALOBOS INTL

19 JAN 24  
Eff 25 Jan

10-9A

GENERAL

CAUTION: Birds in the vicinity of airport.

Commercial ramp parking #1 generally used for arriving and departing aircraft.

Commercial ramp parking #3 is for the exclusive use of aircraft requiring customs/immigration.

At the commercial ramp, aircraft weighing more than 77,162 lbs (35,000 kg) should be towed when departing parking positions.

Rwys 18R/L right-hand circuit.

Rwy 05/23 must not be used by aircraft weighting more than 33,069 lbs (15,000kg).

Twy E and twy A between rwy 18L and rwy 18R day time use only.

ADDITIONAL RUNWAY INFORMATION

RWY		USABLE LENGTHS		TAKE-OFF	WIDTH
		LANDING BEYOND Threshold	Glide Slope		
05 ① 23					98' 30m
18L 36R	HIRL PAPI-L (angle 3.0°)				148' 45m
	HIRL ALSF-1 PAPI-L (angle 3.0°)		7363' 2244m		
18R ① 36L					75' 23m

① VFR day time use only.

RUNWAY INCURSION HOT SPOTS



For information only, not to be construed as ATC instructions.

- **HS1** Aircraft leaving taxiway C must hold off taxiway A.
- **HS2** Aircraft leaving taxiway D must hold off taxiway A.
- **HS3** Aircraft leaving taxiway C must hold off runway 18R.
- **HS4** Aircraft leaving taxiway D must hold off runway 36L.
- **HS5** Aircraft leaving taxiway D must hold off runway 23.
- **HS6** Be cautious with aircraft operations on runway 05-23 and runway 18R-36L.
- **HS7** Aircraft leaving taxiway A must hold off runway 05.
- **HS8** Aircraft leaving taxiway A must hold off runway 18R.
- **HS9** Aircraft leaving taxiway A must hold off runway 18L.
- **HS10** Be cautious with aircraft operations on runway 23 and runway 18L-36R.

	TAKE-OFF			FOR FILING AS ALTERNATE		
	Rwy 36R Authorized Only When CUU VOR Operating	Rwy 18L	Rwy 18R/36L, Rwy 05/23	Precision	Non-Precision	
1 & 2 Eng	500-1	1200-3	VFR	A	600-2	1400-3
3 & 4 Eng				B		
	C					
	D					

MMCU/CUU

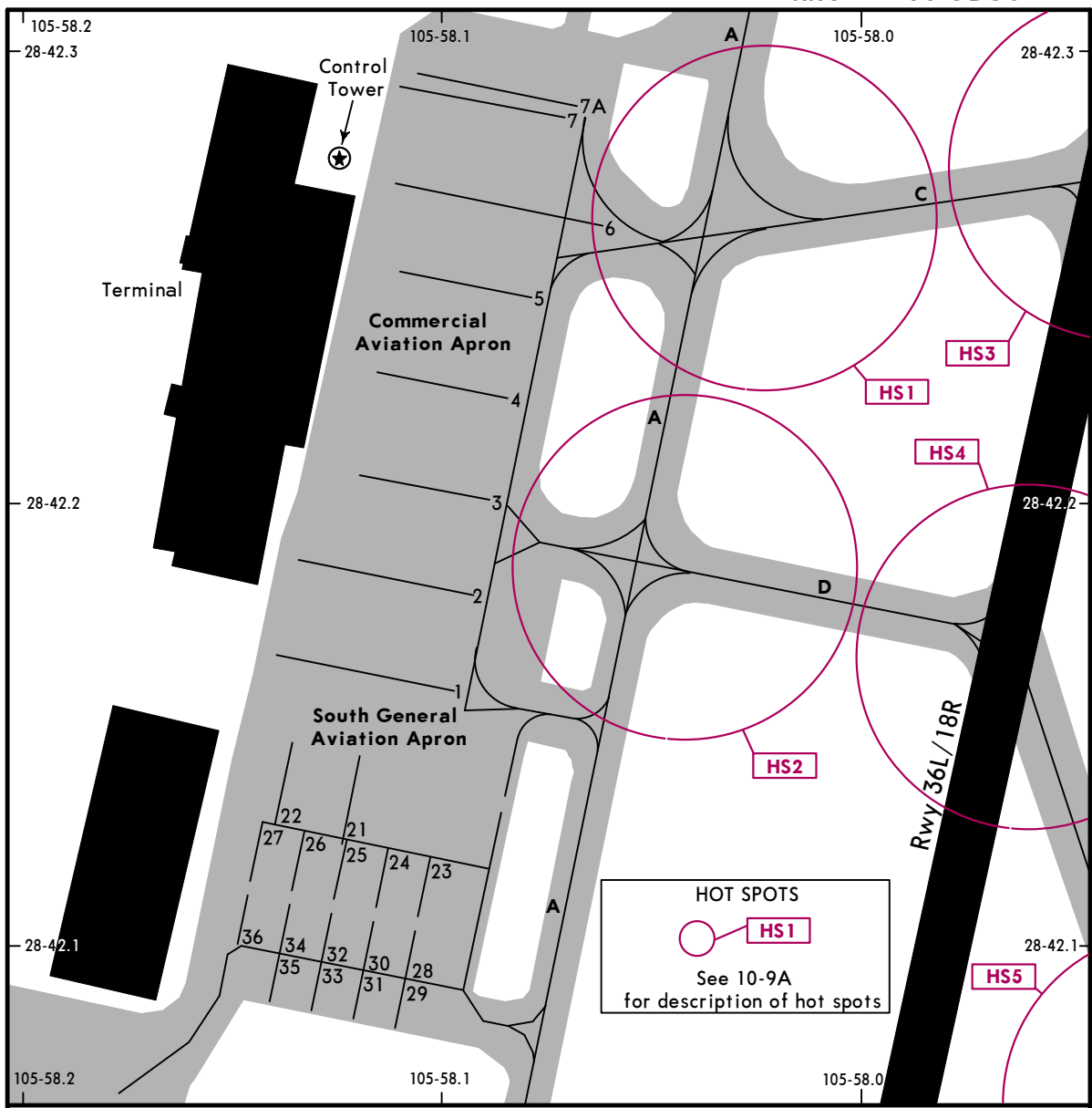
**JEPPESEN**

**CHIHUAHUA, MEXICO**

GEN DIV P A ROBERTO

FIERRO VILLALOBOS INTL

19 JAN 24  
**Eff 25 Jan** (10-9B)



**PARKING SPOT COORDINATES**

SPOT No.	COORDINATES
<b>Commercial Aviation Apron</b>	
1 thru 4	N28 42.2 W105 58.1
5 thru 7A	N28 42.3 W105 58.1
<b>South General Aviation Apron</b>	
21 thru 36	N28 42.1 W105 58.1

CHANGES: Hot spots added.

© JEPPESEN, 2022, 2024. ALL RIGHTS RESERVED.

MMCU/CUU

**JEPPESEN**

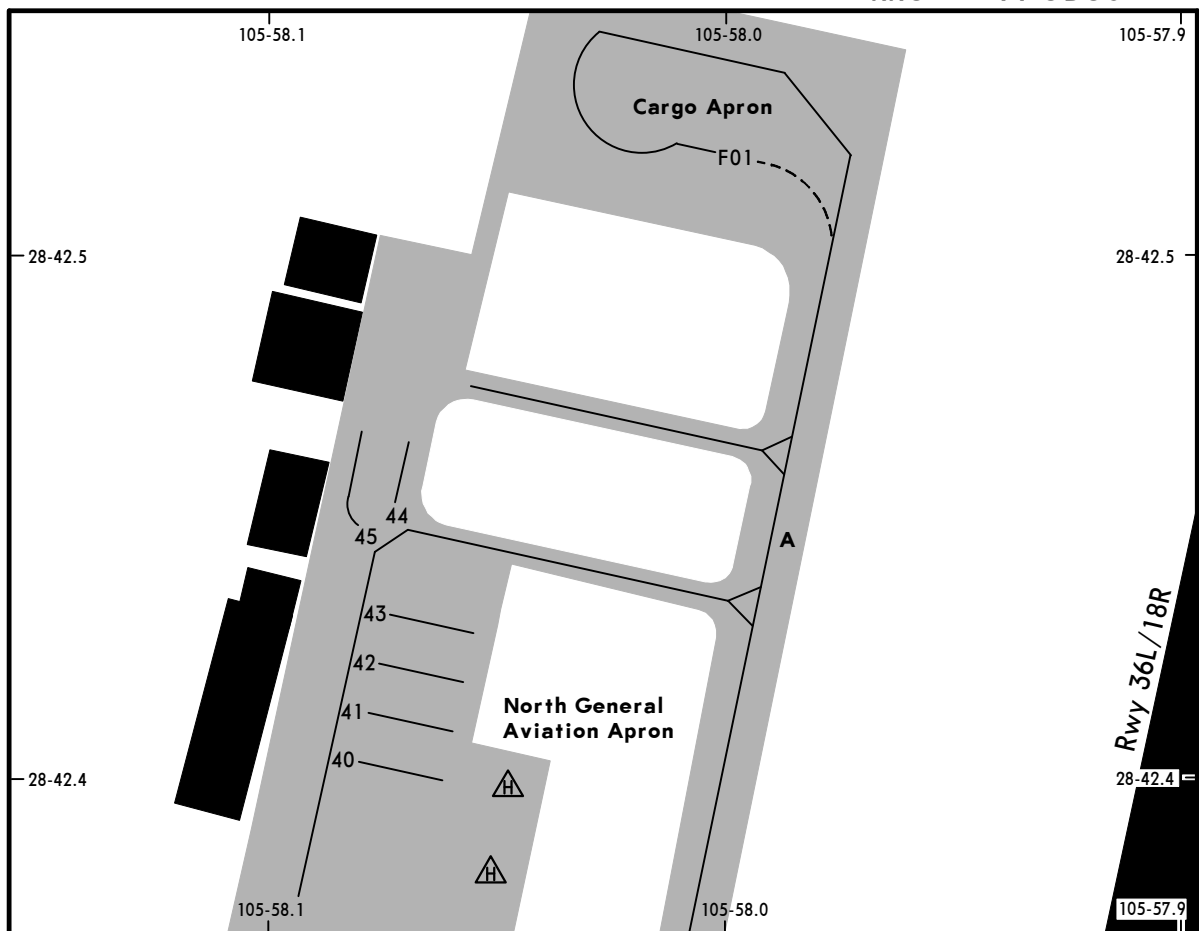
**CHIHUAHUA, MEXICO**

GEN DIV P A ROBERTO

FIERRO VILLALOBOS INTL

19 JAN 24  
Eff 25 Jan

10-9C



**PARKING SPOT COORDINATES**

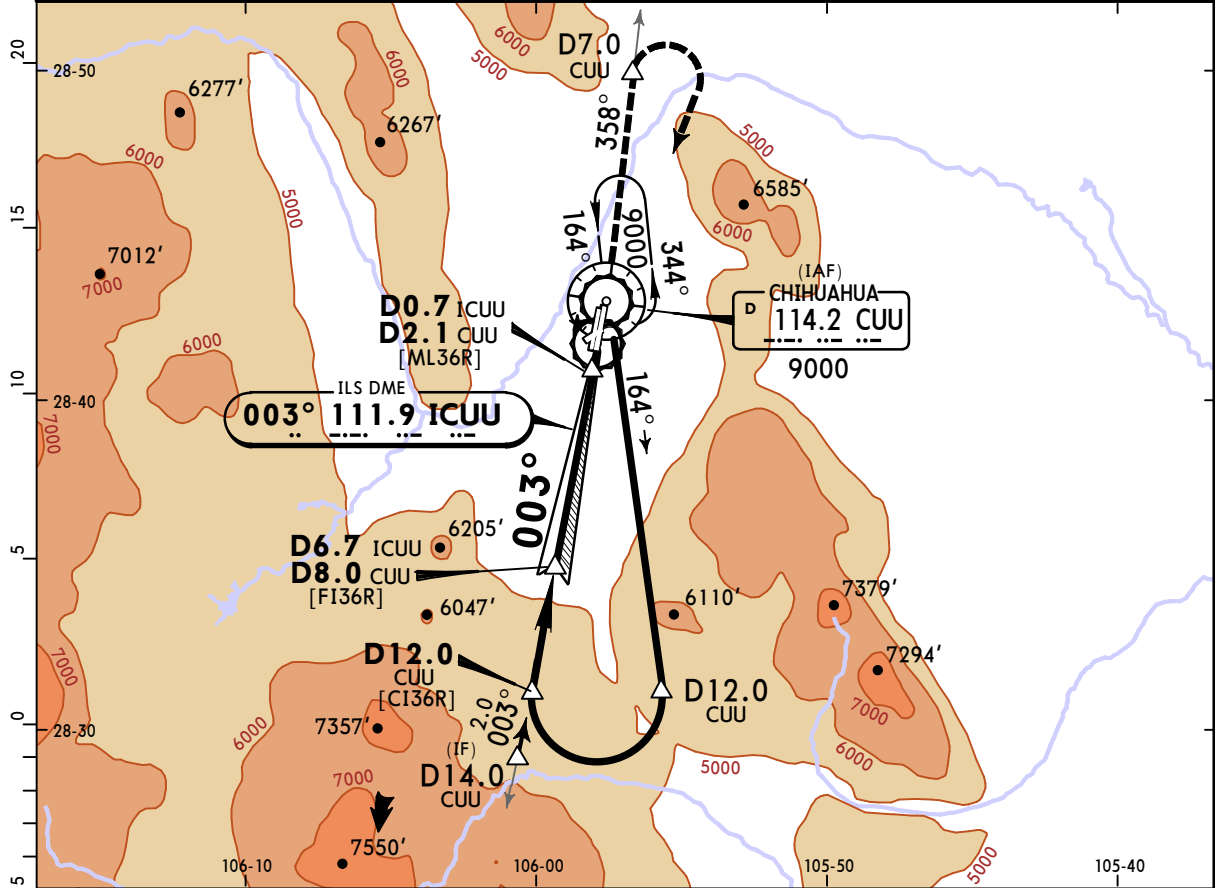
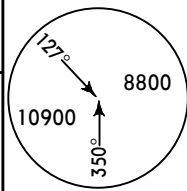
SPOT No.	COORDINATES
<b>North General Aviation Apron</b>	
40 thru 43	N28 42.4 W105 58.1
44 and 45	N28 42.5 W105 58.1
<b>Cargo Apron</b>	
F01	N28 42.5 W105 58.0

**MMCU/CUU**  
**GEN DIV P A ROBERTO**  
**FIERRO VILLALOBOS INTL**

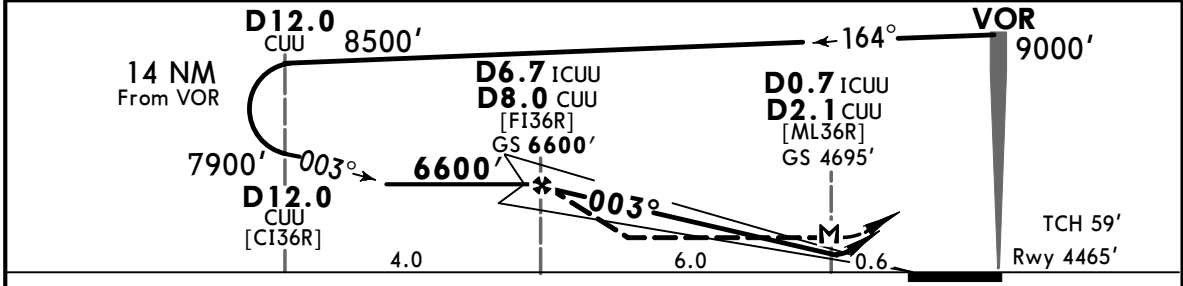
**JEPPESEN**  
 13 MAY 22  
 Eff 19 May **(11-1)**

**CHIHUAHUA, MEXICO**  
**ILS DME 1 or LOC Rwy 36R**

*ATIS <b>127.9</b>		*CHIHUAHUA Approach (R) <b>121.0</b>			*CHIHUAHUA Tower <b>118.4</b>	
LOC ICUU <b>111.9</b>	Final Apch Crs <b>003°</b>	<b>D6.7 ICUU</b> <b>D8.0 CUU</b> <b>6600'</b> (2135')	ILS DA(H) <b>4695'</b> (230')	Apt Elev 4465' Rwy 4465'		
<p><b>MISSED APCH:</b> Climb on runway heading, proceed on CUU VOR R-358 to D7.0 CUU, RIGHT teardrop turn within 10 NM to CUU VOR at the minimum holding altitude.</p>						
Alt Set: IN (MB on req)		Trans level: FL 195		Trans alt: 18500'		



LOC	ICUU DME	6.0	5.0	4.0	3.0	2.0	1.0
(GS out)	ALTITUDE	6370'	6060'	5740'	5420'	5110'	4790'



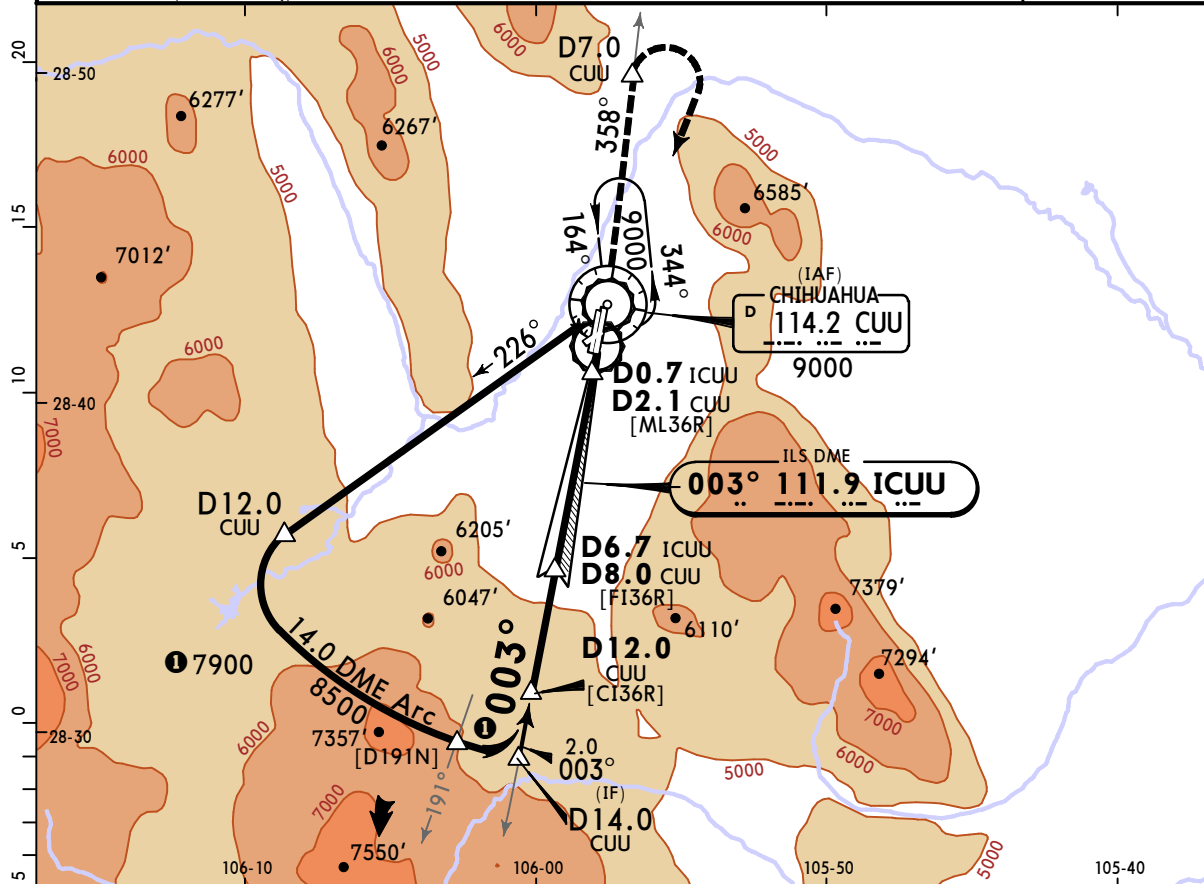
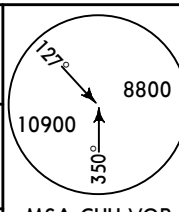
Gnd speed-Kts	70	90	100	120	140	160	ALSIF-1 PAPI	RWY hdg	CUU <b>114.2</b> R-358
GS	3.00°	372	478	531	637	849			
MAP at D0.7 ICUU/D2.1 CUU									
FAF to MAP	6.0	5:09	4:00	3:36	3:00	2:34	2:15		

STRAIGHT-IN LANDING RWY 36R				CIRCLE-TO-LAND			
ILS DA(H) <b>4695'</b> (230')		LOC (GS out) MDA(H) <b>4880'</b> (415')		Max Kts		MDA(H)	
FULL		ALS out		90		5200' (735') -1	
A			3/4	1			
B	1/2	3/4					
C			1	1/4			
D							5200' (735') -2
						5200' (735') -2 1/4	

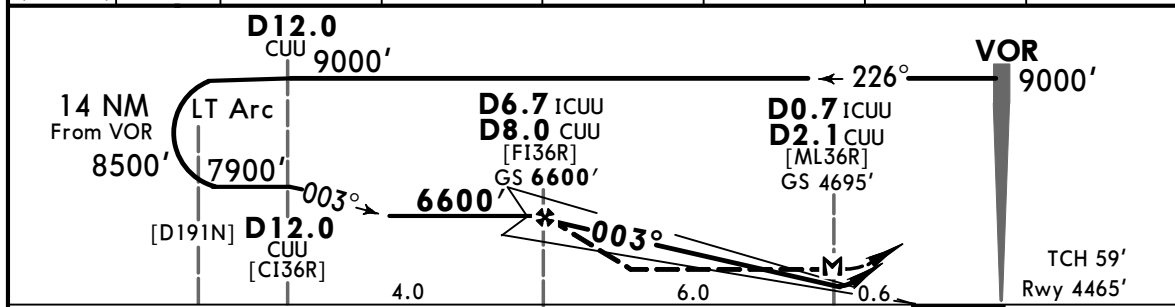


**MMCU/CUU** **JEPPESEN** **CHIHUAHUA, MEXICO**  
 GEN DIV P A ROBERTO **13 MAY 22** **(11-2)** **ILS DME 2 or LOC Rwy 36R**  
 FIERRO VILLALOBOS INTL **Eff 19 May**

*ATIS <b>127.9</b>		*CHIHUAHUA Approach (R) <b>121.0</b>		*CHIHUAHUA Tower <b>118.4</b>	
LOC ICUU <b>111.9</b>	Final Apch Crs <b>003°</b>	<b>D6.7 ICUU</b> <b>D8.0 CUU</b> <b>6600'</b> (2135')	ILS DA(H) <b>4695'</b> (230')	Apt Elev 4465' Rwy 4465'	
<b>MISSED APCH:</b> Climb on runway heading, proceed on CUU VOR R-358 to D7.0 CUU, RIGHT teardrop turn within 10 NM to CUU VOR at the minimum holding altitude.					
Alt Set: IN (MB on req)		Trans level: FL 195		Trans alt: 18500'	



LOC (GS out)	ICUU DME	6.0	5.0	4.0	3.0	2.0	1.0
	ALTITUDE	6370'	6060'	5740'	5420'	5110'	4790'



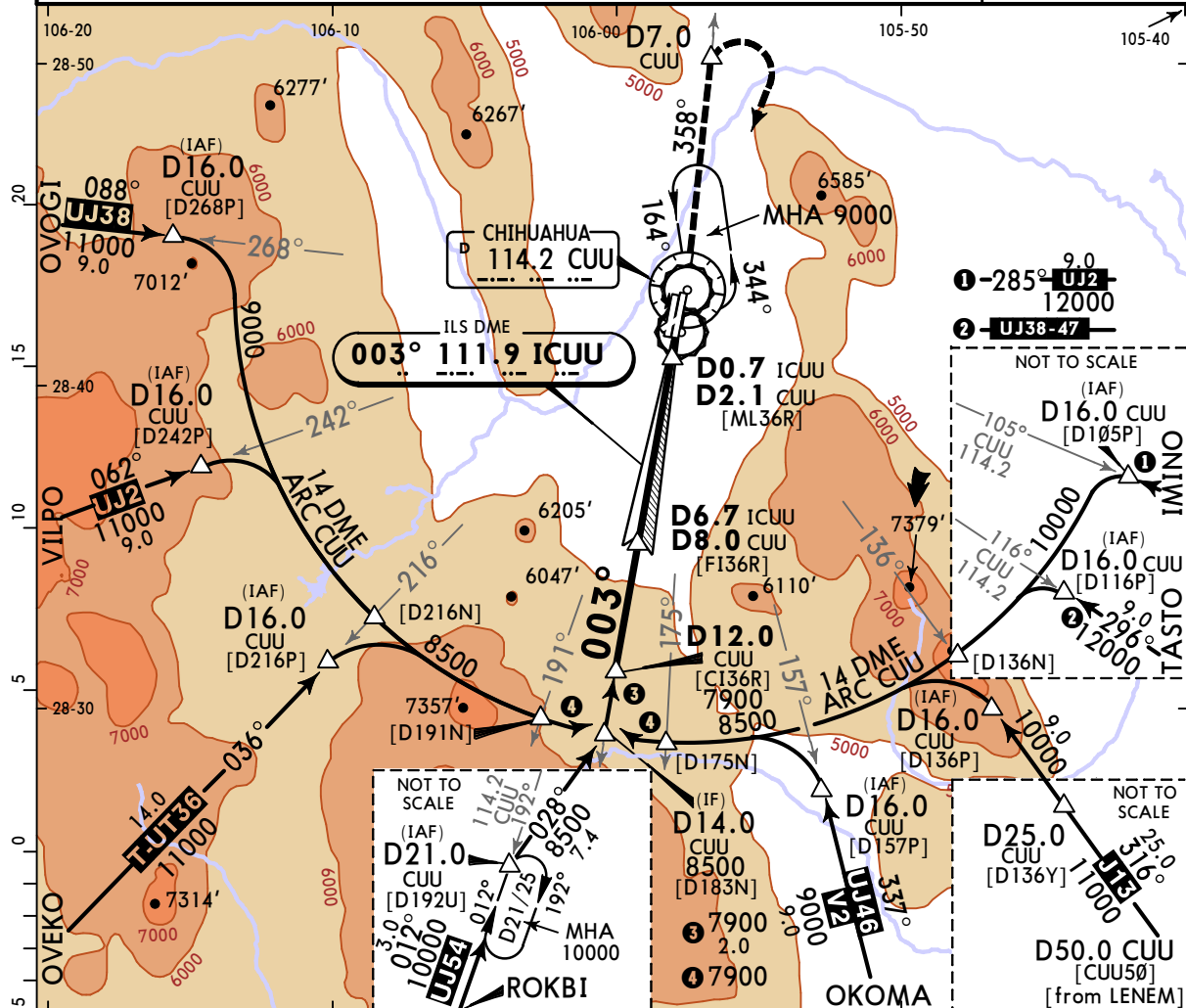
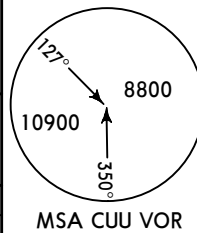
Gnd speed-Kts	70	90	100	120	140	160	ALSF-1	RWY hdg <b>CUU 114.2 R-358</b>
GS	3:00°	372	478	531	637	743	849	
MAP at D0.7 ICUU/D2.1 CUU								
FAF to MAP	6.0	5:09	4:00	3:36	3:00	2:34	2:15	

STRAIGHT-IN LANDING RWY 36R				CIRCLE-TO-LAND	
ILS DA(H) <b>4695'</b> (230')		LOC (GS out) MDA(H) <b>4880'</b> (415')		Max Kts	MDA(H)
FULL	ALS out	ALS out			
A				90	5200'(735') -1
B	1/2	3/4	3/4	120	
C			1	140	5200'(735') -2
D			1 1/4	165	5200'(735') -2 1/4

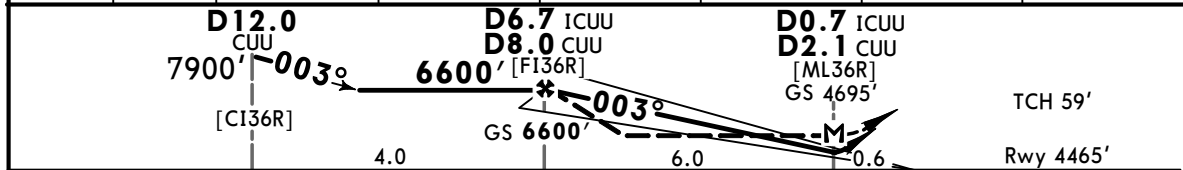
# MMCU/CUU JEPPESEN CHIHUAHUA, MEXICO

GEN DIV P A ROBERTO 13 MAY 22 (11-3) ILS DME 3 or LOC Rwy 36R  
 FIERRO VILLALOBOS INTL Eff 19 May

*ATIS <b>127.9</b>		*CHIHUAHUA Approach (R) <b>121.0</b>			*CHIHUAHUA Tower <b>118.4</b>	
LOC ICUU <b>111.9</b>	Final Apch Crs <b>003°</b>	<b>D6.7 ICUU D8.0 CUU 6600' (2135')</b>	ILS DA(H) <b>4695' (230')</b>	Apt Elev 4465' Rwy 4465'		
<b>MISSED APCH: Climb on runway heading and proceed on CUU VOR R-358 to D7.0 CUU, RIGHT teardrop turn within 10NM to CUU VOR at the minimum holding altitude.</b>						
Alt Set: IN (MB on req)		Trans level: FL 195		Trans alt: 18500'		
Do not use holding patterns at the same altitude.						MSA CUU VOR



LOC	ICUU DME	6.0	5.0	4.0	3.0	2.0	1.0
(GS out)	ALTITUDE	6370'	6060'	5740'	5420'	5110'	4790'

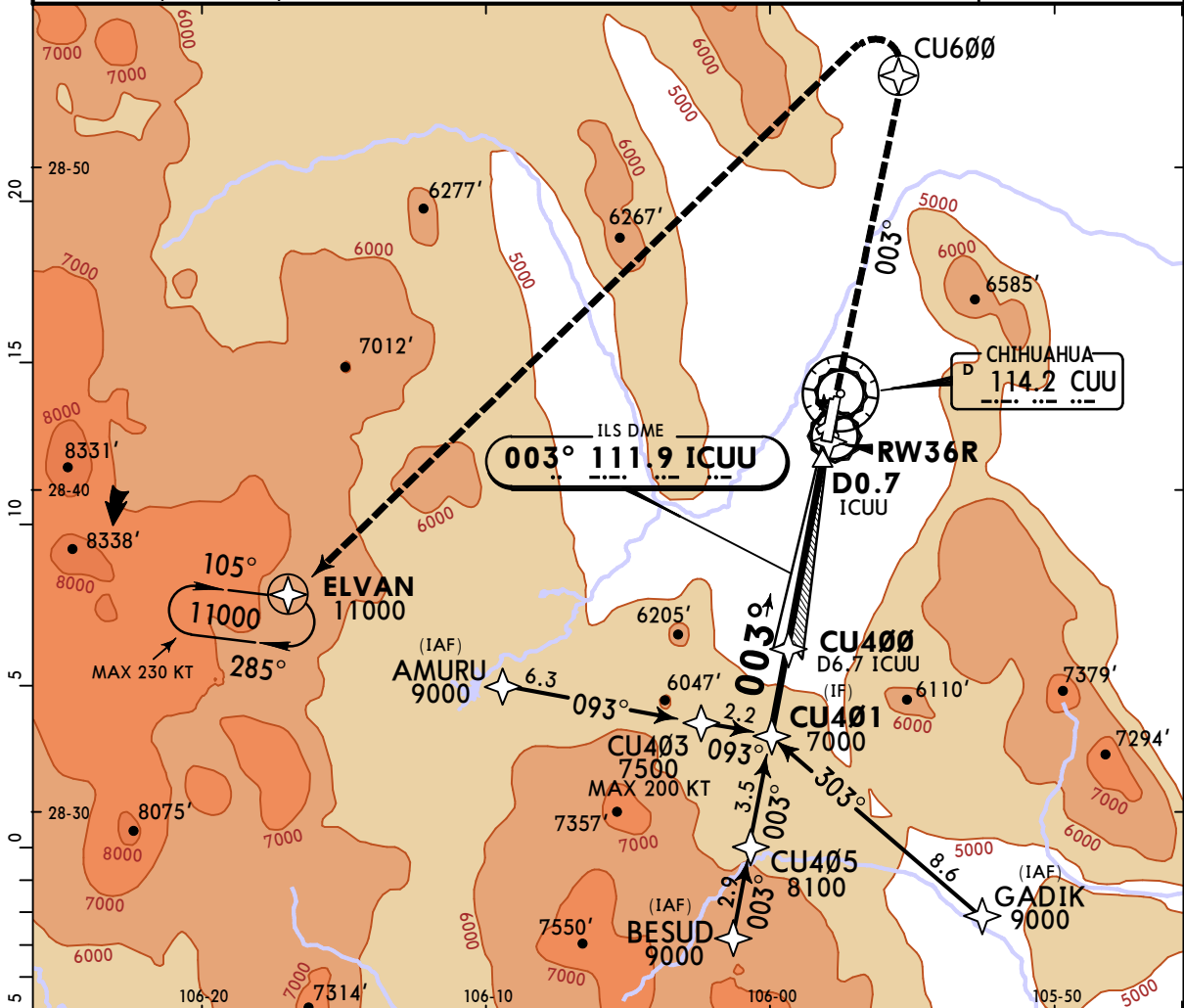


Gnd speed-Kts	70	90	100	120	140	160	ALSF-I PAPI	↑ on RWY hdg	CUU <b>114.2</b> R-358
GS	3.00°	372	478	531	637	849			
MAP at D0.7 ICUU/D2.1 CUU									
FAF to MAP	6.0	5:09	4:00	3:36	3:00	2:34			

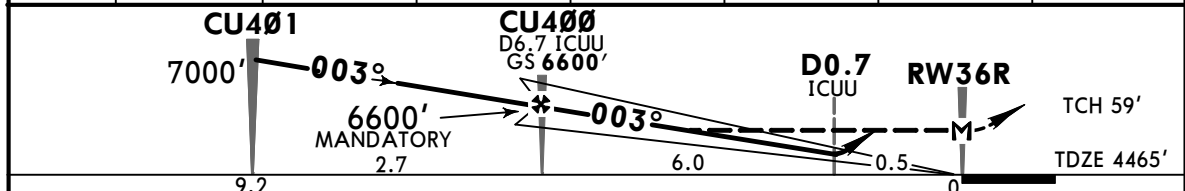
STRAIGHT-IN LANDING RWY 36R				LOC (GS out)			CIRCLE-TO-LAND		
ILS DA(H) <b>4695' (230')</b>		ALS out		MDA(H) <b>4880' (415')</b>		Max Kts			MDA(H)
FULL	ALS out			ALS out			90	5200' (735') -1	
A			3/4			1	120	5200' (735') -2	
B	1/2	3/4						140	5200' (735') -2 1/4
C			1			1 1/4	165	5200' (735') -2 1/4	
D									

**MMCU/CUU** **JEPPESEN** **CHIHUAHUA, MEXICO**  
**GEN DIV P A ROBERTO** 13 MAY 22 **(11-4)** **ILS DME 4 or LOC Rwy 36R**  
**FIERRO VILLALOBOS INTL** Eff 19 May

*ATIS 127.9		*CHIHUAHUA Approach (R) 121.0		*CHIHUAHUA Tower 118.4	
LOC ICUU <b>111.9</b>	Final Apch Crs <b>003°</b>	<b>CU400</b> MANDATORY <b>6600'</b> (2135')	ILS DA(H) <b>4695'</b> (230')	Apt Elev 4465' TDZE 4465'	
<b>MISSED APCH:</b> Climb on track 003° to CU600 and proceed direct to ELVAN at the minimum holding altitude or follow ATC instructions.					
Alt Set: IN (MB on req)		Trans level: FL 195		Trans alt: 18500'	
RNAV 1   RNAV 1 required for initial, intermediate and missed approach.					
1. GNSS required. 2. Operative RADAR					



LOC (GS out)	DIST to THR	6.0	5.0	4.0	3.0	2.0	1.0
	ALTITUDE	6370'	6060'	5740'	5420'	5110'	4790'



Gnd speed-Kts	70	90	100	120	140	160	ALS F-I	PAPI	↑ on 003° track	CU600
GS 3.00°	372	478	531	637	743	849				
MAP at RW36R										
FAF to MAP	6.5	5:34	4:20	3:54	3:15	2:47	2:26			

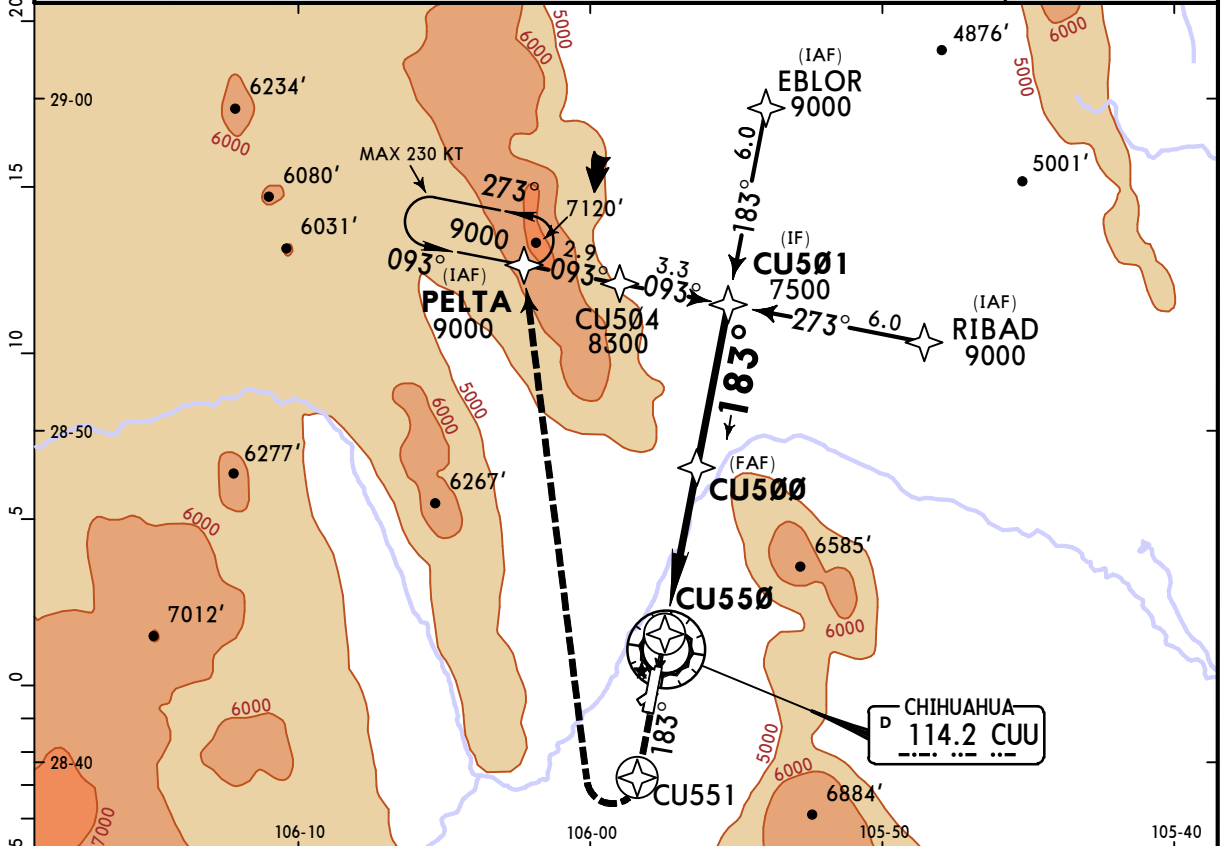
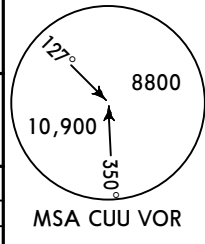
STRAIGHT-IN LANDING RWY 36R				CIRCLE-TO-LAND		
ILS DA(H) <b>4695'</b> (230')		LOC (GS out) MDA(H) <b>4880'</b> (415')		Max Kts	MDA(H)	
FULL	ALS out	ALS out			90	5200' (735') -1
A				120	5200' (735') -2	
B	1/2	3/4	3/4	140	5200' (735') -2	
C			1	165	5880' (1415') -3	
D			1 1/4			

**MMCU/ CUU**  
**GEN DIV P A ROBERTO**  
**FIERRO VILLALOBOS INTL**

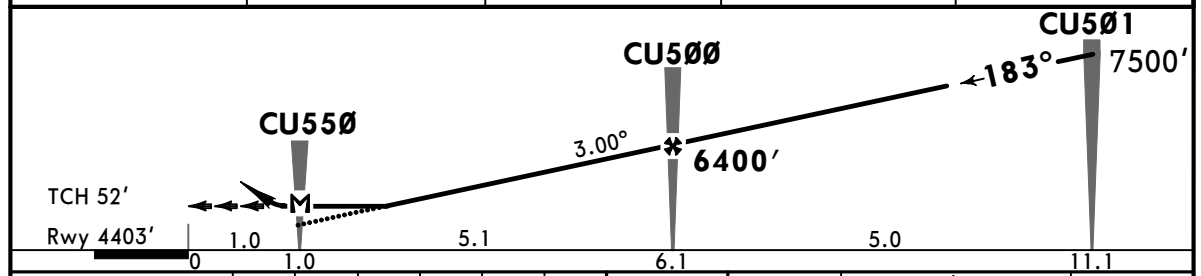
**JEPPESSEN**  
 13 MAY 22 **(12-1)** **Eff 19 May**

**CHIHUAHUA, MEXICO**  
**RNP Rwy 18L**

*ATIS <b>127.9</b>		*CHIHUAHUA Approach (R) <b>121.0</b>		*CHIHUAHUA Tower <b>118.4</b>	
RNAV	Final Apch Crs <b>183°</b>	<b>CU500</b> 6400' (1997')	RNAV MDA(H) <b>5060' (657')</b>	Apt Elev 4465' Rwy 4403'	
<b>MISSED APCH: Climb on track 183° to CU551 and proceed direct to PELTA at the minimum holding altitude or follow ATC instructions.</b>					
Alt Set: IN (MB on req)		Trans level: FL 195		Trans alt: 18500'	
RNP Apch 1. GNSS required 2. Operative radar.					



DIST to THR	2.0	3.0	4.0	5.0
ALTITUDE	5090'	5410'	5730'	6050'



Gnd speed-Kts	70	90	100	120	140	160	PAPI-L	↑ on Track	183°	CU551
Descent Angle 3.00°	372	478	531	637	743	849				
MAP at CU500										
CU500 to MAP	5.1	4:22	3:24	3:04	2:33	2:11	1:55			

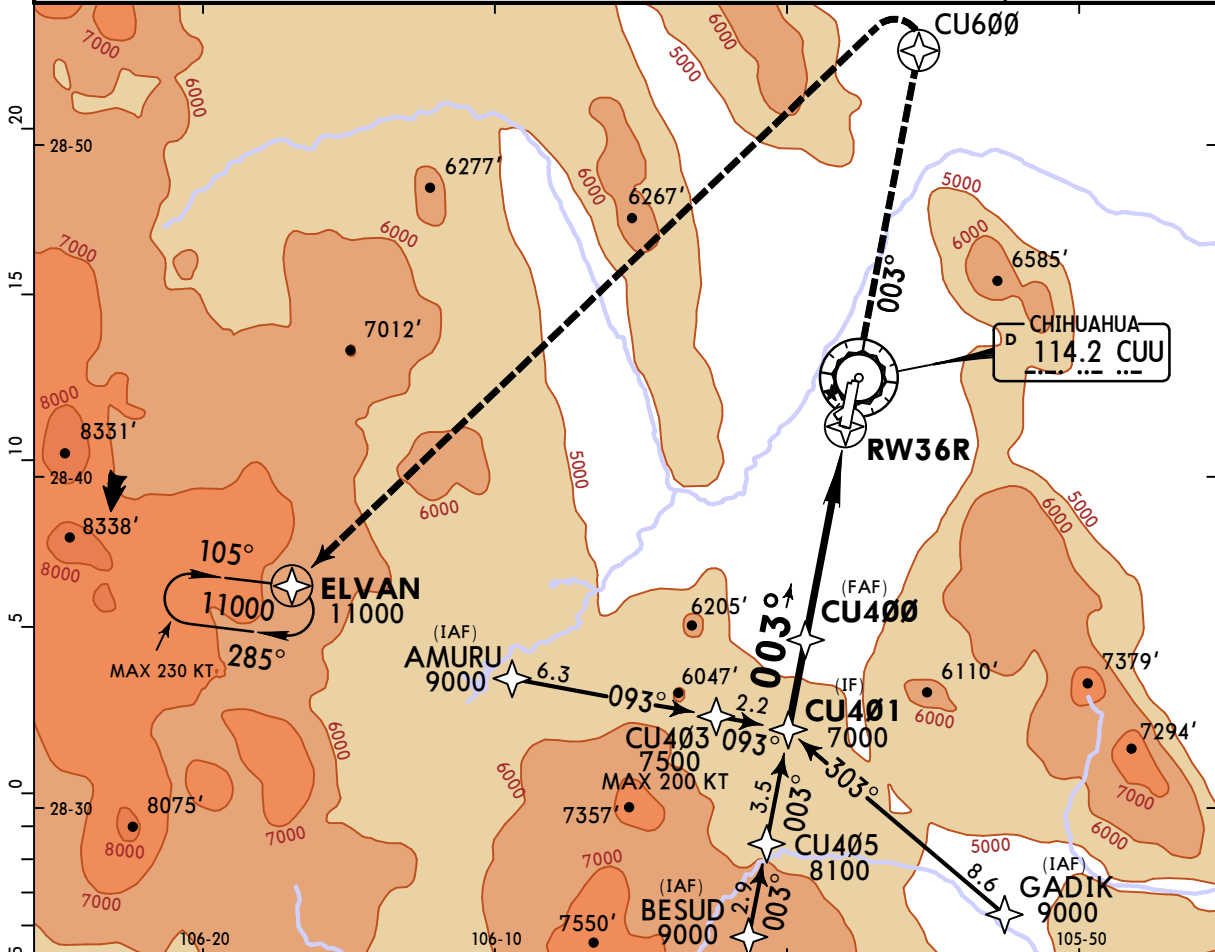
STRAIGHT-IN LANDING RWY 18L						CIRCLE-TO-LAND				
RNAV						Max Kts				
MDA(H) <b>5060' (657')</b>						MDA(H)				
A	1					90	5200' (735') -1			
B	1 3/4					120	5200' (735') -2			
C	2					140	5200' (735') -2			
D						165	5880' (1415') -3			

**MMCU/ CUU**  
**GEN DIV P A ROBERTO**  
**FIERRO VILLALOBOS INTL**

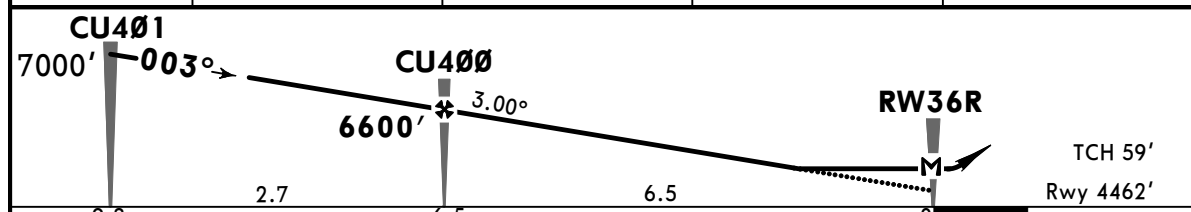
**JEPPESEN**  
 13 MAY 22 **(12-2)** **Eff 19 May**

**CHIHUAHUA, MEXICO**  
**RNP Rwy 36R**

*ATIS 127.9		*CHIHUAHUA Approach (R) 121.0		*CHIHUAHUA Tower 118.4	
RNAV	Final Apch Crs <b>003°</b>	<b>CU400</b> 6600' (2138')	RNAV MDA(H) <b>5060' (598')</b>	Apt Elev 4465'	Rwy 4462'
<b>MISSED APCH: Climb on track 003° to CU600 and proceed direct to ELVAN at the minimum holding altitude or follow ATC instructions.</b>					
Alt Set: IN (MB on req)		Trans level: FL 195		Trans alt: 18500'	
RNP Apch 1. GNSS required 2. Operative radar.					



DIST to THR	5.0	4.0	3.0	2.0
ALTITUDE	6110'	5790'	5470'	5150'



Gnd speed-Kts	70	90	100	120	140	160	ALSF-1 PAPI ↑ on Track <b>003°</b> <b>CU600</b>
Descent Angle 3.00°	372	478	531	637	743	849	
MAP at RW36R							
CU400 to MAP	6.5	5:36	4:22	3:55	3:16	2:48	

STRAIGHT-IN LANDING RWY36R				CIRCLE-TO-LAND			
LNAV				Max Kts			
MDA(H) <b>5060' (598')</b>				MDA(H)			
ALS out							
A				90	5200' (735') -1		
B	1/2			120	5200' (735') -2		
C				140	5200' (735') -2		
D	1			165	5880' (1415') -3		



**MMCU/CUU**  
**GEN DIV P A ROBERTO**  
**FIERRO VILLALOBOS INTL**



**CHIHUAHUA, MEXICO**

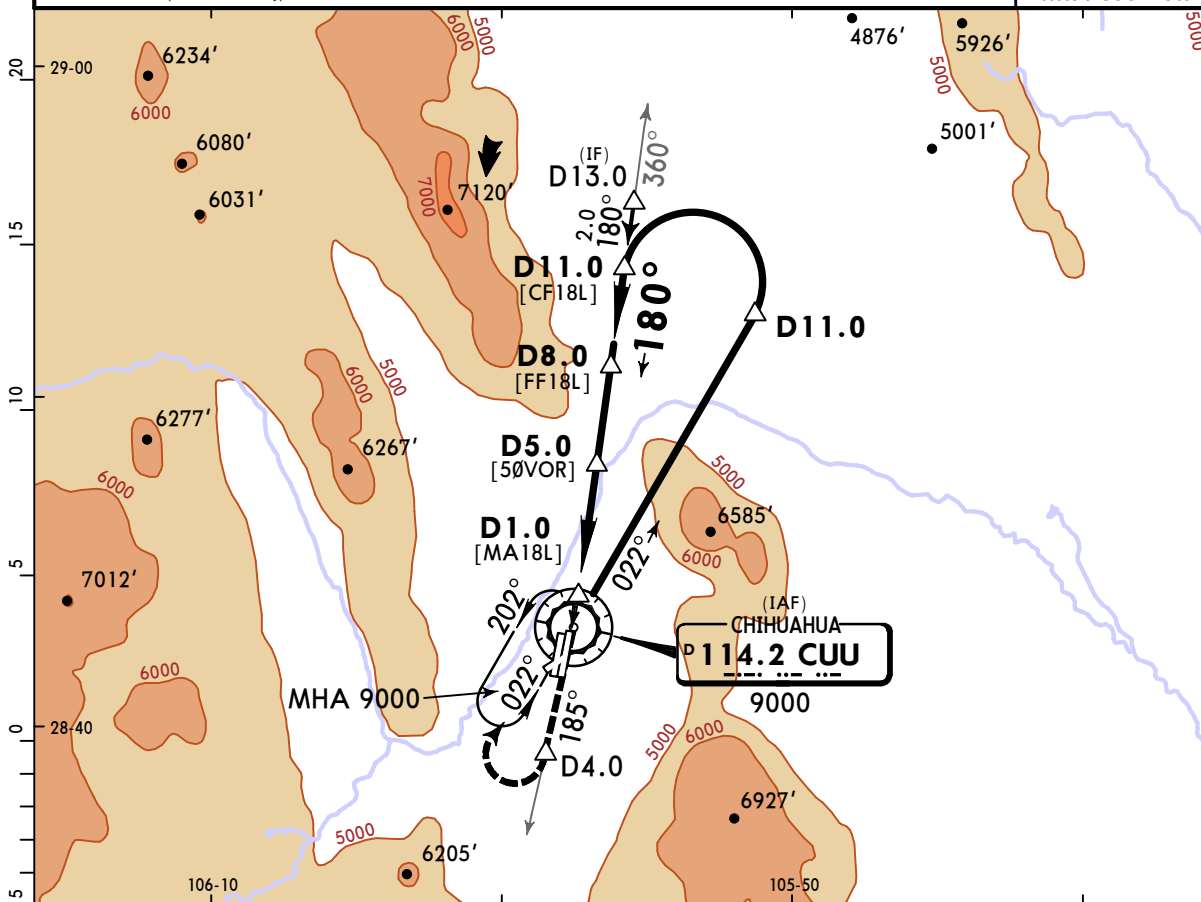
13 MAY 22 **(13-1)** Eff 19 May

**VOR DME 1 Rwy 18L**

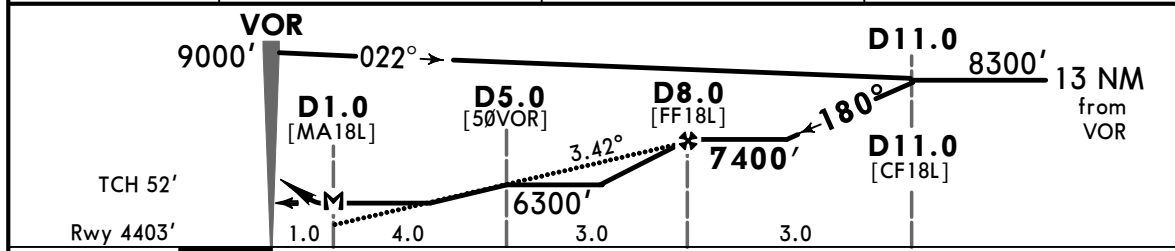
*ATIS <b>127.9</b>		*CHIHUAHUA Approach (R) <b>121.0</b>		*CHIHUAHUA Tower <b>118.4</b>	
-----------------------	--	---	--	----------------------------------	--

BRIEFING STRIP™	VOR CUU <b>114.2</b>	Final Apch Crs <b>180°</b>	D8.0 <b>7400'</b> (2997')	MDA(H) <b>5060'</b> (657')	Apt Elev 4465' Rwy 4403'	
	<b>MISSED APCH:</b> Climb outbound via CUU VOR R-185 to D4.0, turn RIGHT within 7 NM to CUU VOR at the minimum holding altitude.					

Alt Set: IN (MB on req)	Trans level: FL 195	Trans alt: 18500'	MSA CUU VOR
-------------------------	---------------------	-------------------	-------------



CUU DME	2.0	3.0	4.0
ALTITUDE	5220'	5580'	5940'



Gnd speed-Kts	70	90	100	120	140	160	PAPI-L	↑ via <b>114.2 R-185</b>	<b>D4.0</b>	
Descent Angle	3.42°	424	545	605	726	847				968
MAP at D1.0										
FAF to MAP	7.0	6:00	4:40	4:12	3:30	3:00	2:38			

STRAIGHT-IN LANDING RWY 18L			CIRCLE-TO-LAND		
MDA(H) <b>5060'</b> (657')			MDA(H)		
A	B	C	Max Kts	D	E
	1		90	5200' (735') -1	
		1 3/4	120	5200' (735') -2	
	2		140	5200' (735') -3	
			165	5880' (1415') -3	

**MMCU/CUU**  
**GEN DIV P A ROBERTO**  
**FIERRO VILLALOBOS INTL**

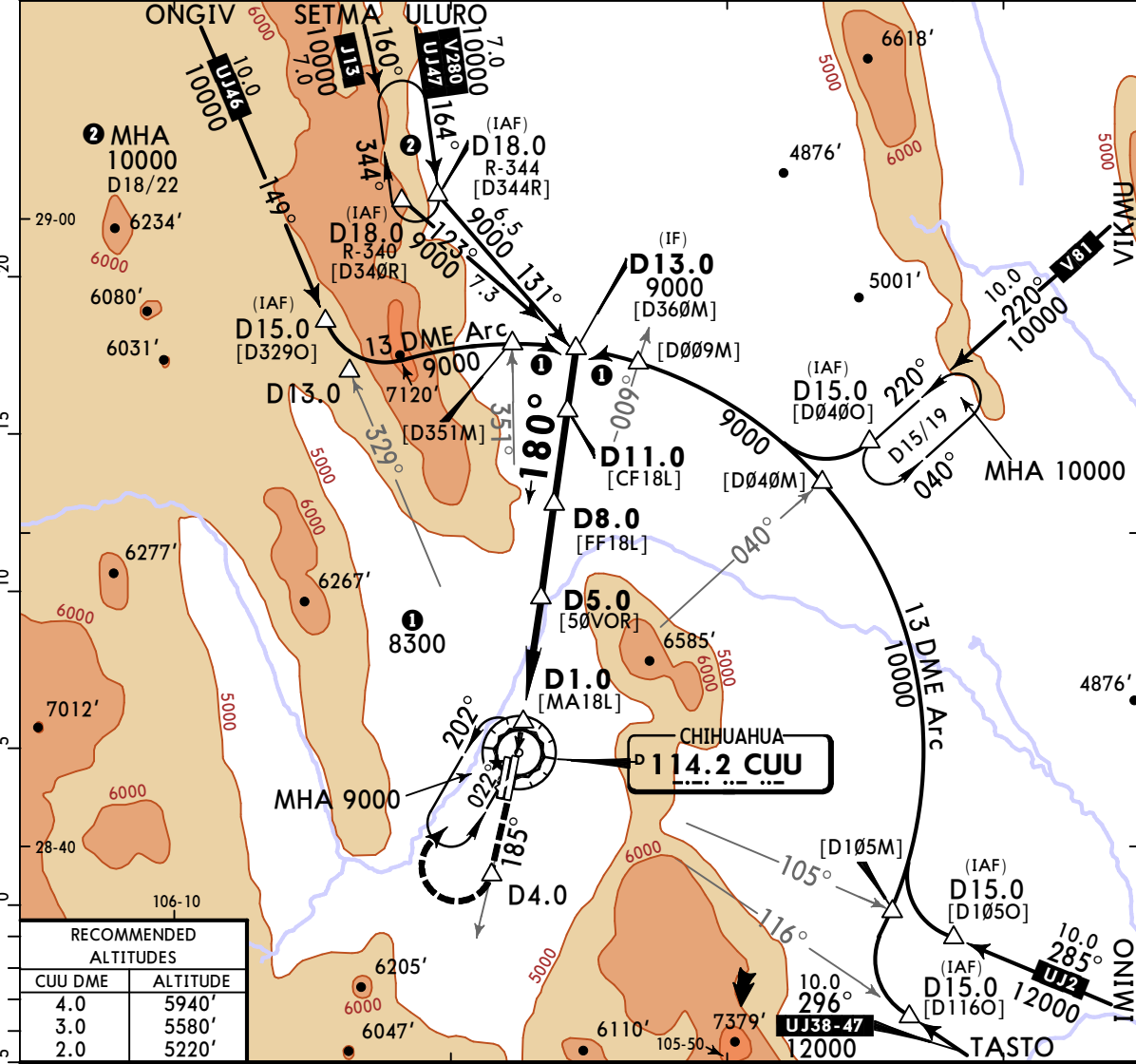
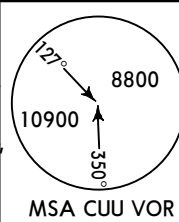


**CHIHUAHUA, MEXICO**

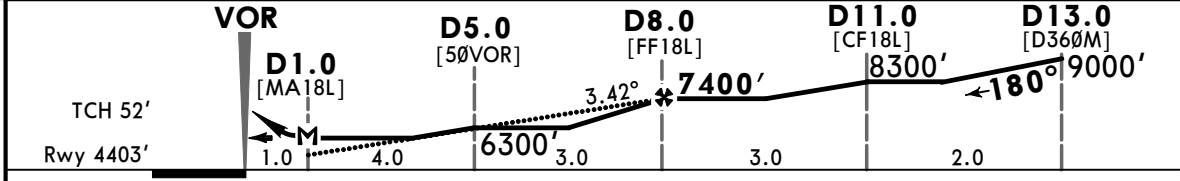
13 MAY 22 (13-2) Eff 19 May

**VOR DME 2 Rwy 18L**

*ATIS 127.9		*CHIHUAHUA Approach (R) 121.0		*CHIHUAHUA Tower 118.4	
VOR CUU <b>114.2</b>	Final Apch Crs <b>180°</b>	D8.0 <b>7400'</b> (2997')	MDA(H) <b>5060'</b> (657')	Apt Elev 4465' Rwy 4403'	
<b>MISSED APCH:</b> Climb outbound via CUU VOR R-185 to D4.0, turn RIGHT within 7 NM to CUU VOR at the minimum holding altitude.					
Alt Set: IN (MB on req)		Trans level: FL 195		Trans alt: 18500	
1. In case of DME failure during the procedure maintain last assigned altitude and proceed to the station in accordance with ATC instructions. 2. Do not use holding patterns at the same altitude.					



RECOMMENDED ALTITUDES	
CUU DME	ALTITUDE
4.0	5940'
3.0	5580'
2.0	5220'



Gnd speed-Kts	70	90	100	120	140	160	PAPI-L	CUU via <b>114.2 R-185</b> D4.0	
Descent Angle	3.42°	424	545	605	726	847			968
MAP at D1.0									
FAF to MAP	7.0	6:00	4:40	4:12	3:30	3:00	2:38		

STRAIGHT-IN LANDING RWY 18L			CIRCLE-TO-LAND		
MDA(H) <b>5060'</b> (657')			MDA(H)		
A	1	90	5200' (735') -1		
B		120	5200' (735') -2		
C	1 3/4	140	5200' (735') -2		
D	2	165	5880' (1415') -3		



**MMCU/CUU**  
 GEN DIV P A ROBERTO  
 FIERRO VILLALOBOS INTL

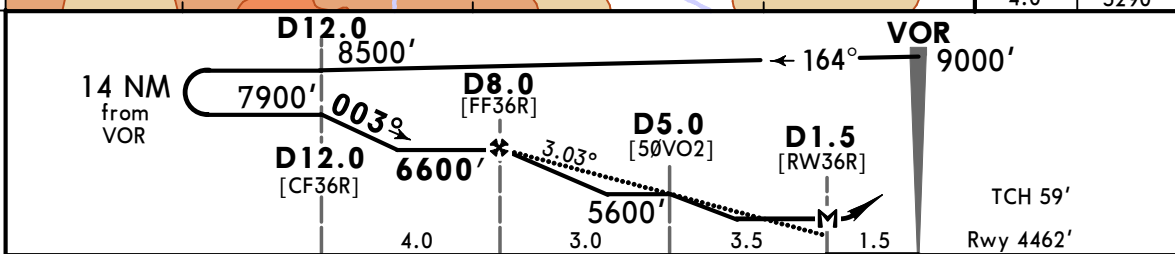
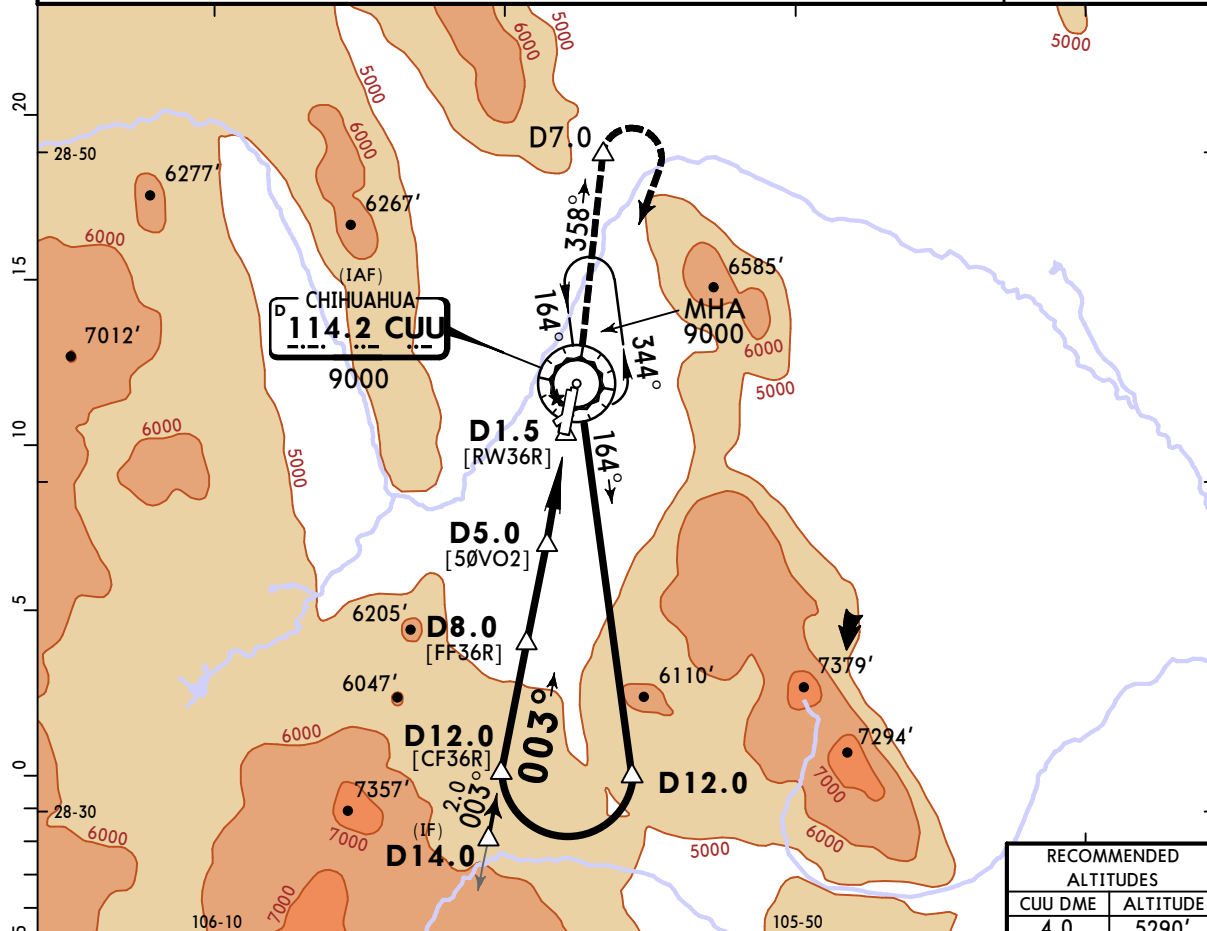
**JEPPESSEN**

**CHIHUAHUA, MEXICO**

13 MAY 22 **(13-3)** Eff 19 May

**VOR DME 1 Rwy 36R**

*ATIS <b>127.9</b>		*CHIHUAHUA Approach (R) <b>121.0</b>		*CHIHUAHUA Tower <b>118.4</b>	
VOR CUU <b>114.2</b>	Final Apch Crs <b>003°</b>	<b>D8.0</b> 6600'(2138')	MDA(H) <b>5060'(598')</b>	Apt Elev 4465' Rwy 4462'	
<b>MISSED APCH:</b> Climb on runway heading, and proceed on CUU VOR R-358 to D7.0, then RIGHT teardrop turn within 10 NM to CUU VOR at the minimum holding altitude.					
Alt Set: IN (MB on req)			Trans level: FL 195	Trans alt: 18500'	
In case of DME failure during the procedure maintain last assigned altitude and proceed to the station in accordance with ATC instructions.					MSA CUU VOR



Gnd speed-Kts	70	90	100	120	140	160	ALSF-I PAPI 	on <b>Rwy</b> hdg <b>114.2</b> <b>R-358</b>
Descent Angle	3.03°	375	482	536	643	750		
MAP at D1.5								
FAF to MAP	6.5	5:34	4:20	3:54	3:15	2:47		

STRAIGHT-IN LANDING RWY 36R			CIRCLE-TO-LAND		
MDA(H) <b>5060'(598')</b>			MDA(H)		
		ALS out	Max Kts		
A		1	90	5200'(735')	-1
B	1/2		120		
C		1 1/2	140	5200'(735')	-2
D	1	1 3/4	165	5880'(1415')	-3

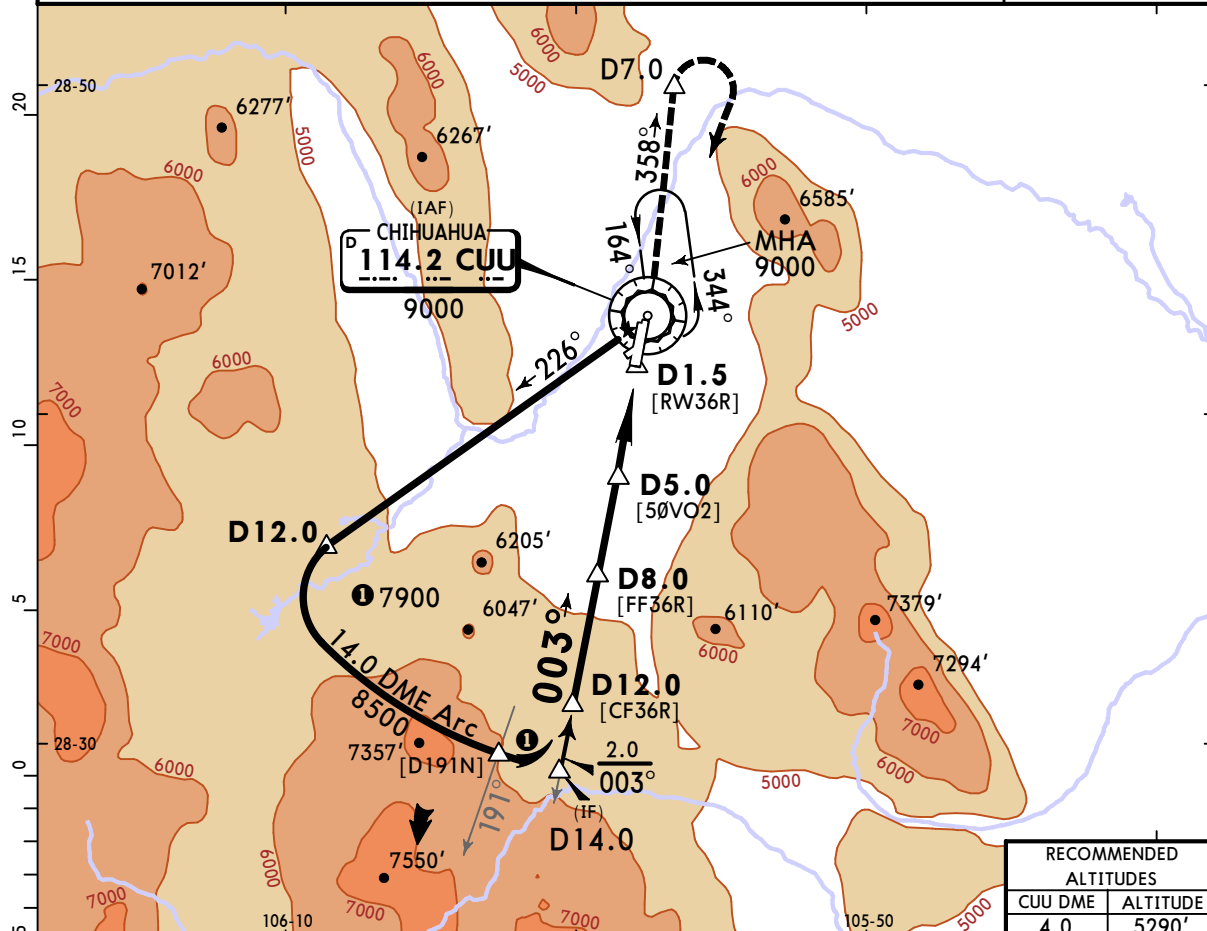
**MMCU/CUU**  
 GEN DIV P A ROBERTO  
 FIERRO VILLALOBOS INTL

**JEPPESSEN**

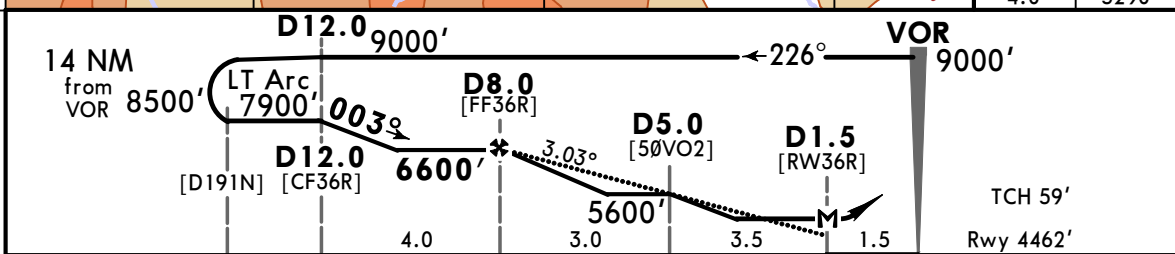
**CHIHUAHUA, MEXICO**

13 MAY 22 **13-4** Eff 19 May **VOR DME 2 Rwy 36R**

*ATIS <b>127.9</b>		*CHIHUAHUA Approach (R) <b>121.0</b>		*CHIHUAHUA Tower <b>118.4</b>		
VOR CUU <b>114.2</b>	Final Apch Crs <b>003°</b>	D8.0 <b>6600'</b> (2138')	MDA(H) <b>5060'</b> (598')	Apt Elev 4465' Rwy 4462'		
<b>MISSED APCH:</b> Climb on runway heading, and proceed on CUU VOR R-358 to D7.0, then RIGHT teardrop turn within 10 NM to CUU VOR at the minimum holding altitude.						
Alt Set: IN (MB on req)		Trans level: FL 195		Trans alt: 18500'		
In case of DME failure during the procedure maintain last assigned altitude and proceed to the station in accordance with ATC instructions.						
					MSA CUU VOR	



RECOMMENDED ALTITUDES	
CUU DME	ALTITUDE
4.0	5290'



Gnd speed-Kts	70	90	100	120	140	160	ALSF-I PAPI 	on Rwy hdg <b>CUU 114.2</b> <b>R-358</b>
Descent Angle	3.03°	375	482	536	643	858		
MAP at D1.5								
FAF to MAP	6.5	5:34	4:20	3:54	3:15	2:47		

STRAIGHT-IN LANDING RWY 36R			CIRCLE-TO-LAND		
MDA(H) <b>5060'</b> (598')			MDA(H)		
		ALS out	Max Kts		
A		1	90	5200'(735')	-1
B	1/2		120		
C		1 1/2	140	5200'(735')	-2
D	1	1 3/4	165	5880'(1415')	-3

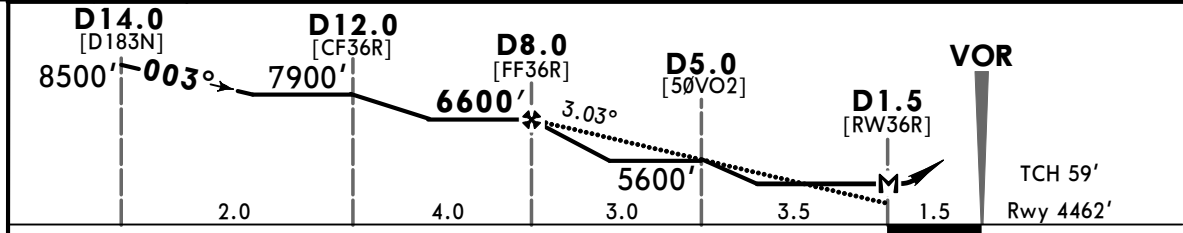
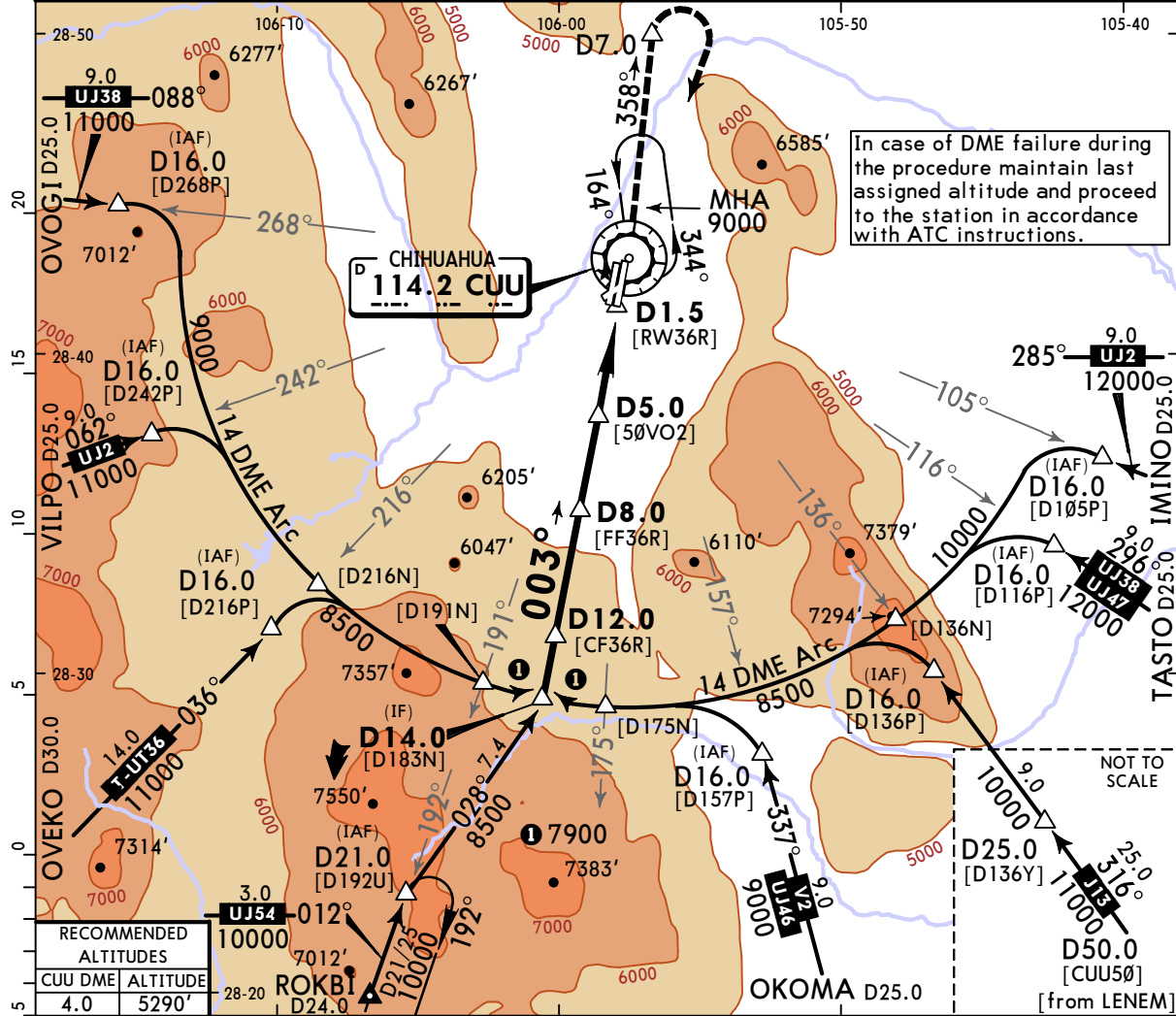
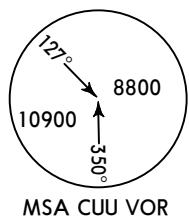
**MMCU/CUU**  
 GEN DIV P A ROBERTO  
 FIERRO VILLALOBOS INTL



**CHIHUAHUA, MEXICO**

13 MAY 22 (13-5) Eff 19 May VOR DME 3 Rwy 36R

*ATIS 127.9		*CHIHUAHUA Approach (R) 121.0		*CHIHUAHUA Tower 118.4	
VOR CUU <b>114.2</b>	Final Apch Crs <b>003°</b>	D8.0 6600' (2138')	MDA(H) 5060' (598')	Apt Elev 4465' Rwy 4462'	
<p><b>MISSED APCH:</b> Climb on runway heading, and proceed on CUU VOR R-358 to D7.0, then RIGHT teardrop turn within 10 NM to CUU VOR at the minimum holding altitude.</p>					
Alt Set: IN (MB on req)		Trans level: FL 195		Trans alt: 18500'	
Do not use holding patterns at the same altitude.					



Gnd speed-Kts	70	90	100	120	140	160	ALSF-I PAPI	↑ on Rwy hdg	CUU <b>114.2</b> <b>R-358</b>
Descent Angle 3.03°	375	482	536	643	750	858			
MAP at D1.5									
FAF to MAP	6.5	5:34	4:20	3:54	3:15	2:47			

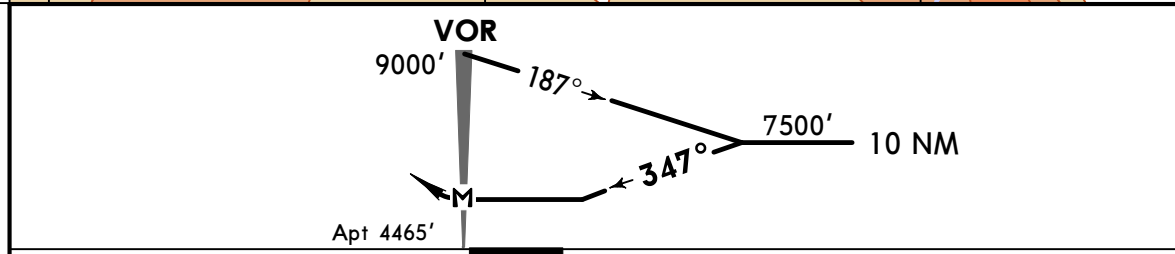
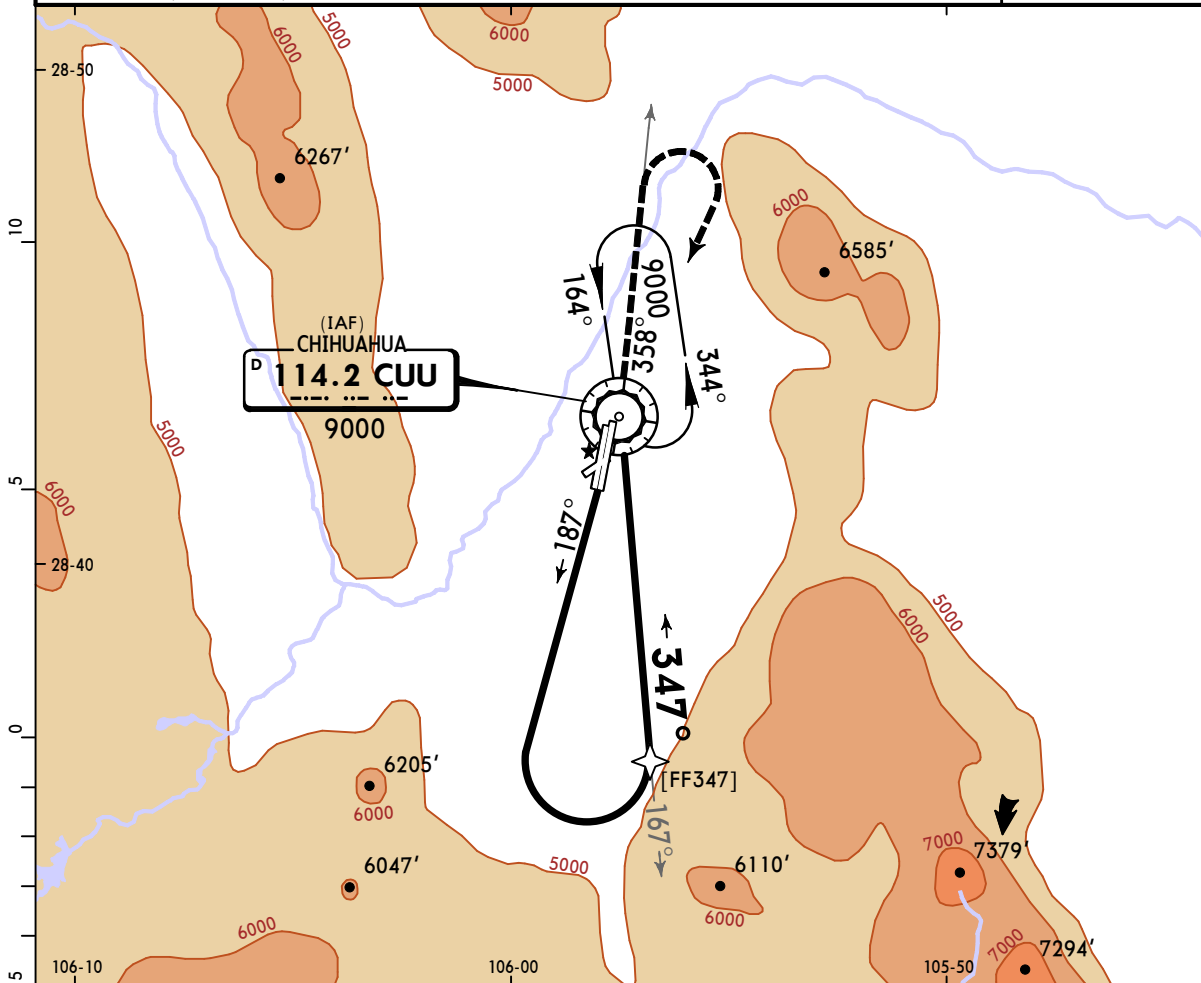
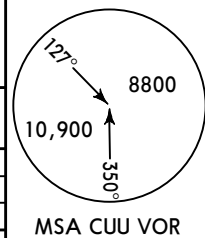
STRAIGHT-IN LANDING RWY 36R			CIRCLE-TO-LAND		
MDA(H) <b>5060'</b> (598')			MDA(H)		
	ALS out	Max Kts			
A	1	90	5200' (735') -1		
B	1/2	120	5200' (735') -2		
C	1 1/2	140	5200' (735') -2		
D	1	165	5880' (1415') -3		

**MMCU/CUU**  
**GEN DIV P A ROBERTO**  
**FIERRO VILLALOBOS INTL**

**JEPPESEN**  
 13 MAY 22 **(13-6)** Eff 19 May

**CHIHUAHUA, MEXICO**  
**VOR A**

*ATIS <b>127.9</b>		*CHIHUAHUA Approach (R) <b>121.0</b>		*CHIHUAHUA Tower <b>118.4</b>				
VOR CUU <b>114.2</b>	Final Apch Crs <b>347°</b>	No FAF	MDA(H) Refer to Minimums	Apt Elev 4465'				
<b>MISSED APCH: Climb outbound on CUU VOR R-358, RIGHT teardrop turn within 10 NM to CUU VOR at the minimum holding altitude.</b>								
MISSED APCH: Max Distance Outbound Track 7 NM								
Gnd Speed-Kts		80	100	120	140	160	180	200
Time		5:15	4:12	3:30	3:00	2:37	2:20	2:06
Alt Set: IN (MB on req)			Trans level: FL 195			Trans alt: 18500'		



MAP at VOR								Lighting - Refer to Airport Chart	CUU on <b>114.2</b> R-358
------------	--	--	--	--	--	--	--	-----------------------------------	---------------------------

CIRCLE-TO-LAND		MDA(H)
A	90	<b>5200' (735') -1</b>
B	120	<b>5200' (735') -2</b>
C	140	<b>5200' (735') -2</b>
D	165	<b>5880' (1415') -3</b>