

General Information

Location: IXTAPA-ZIHUATANEJO MEX
ICAO/IATA: MMZH / ZIH
Lat/Long: N17° 36.1', W101° 27.6'
Elevation: 26 ft

Airport Use: Public
Daylight Savings: Not Observed
UTC Conversion: +6:00 = UTC
Magnetic Variation: 6.0° E

Fuel Types: 100-130 Octane, Jet A-1
Customs: Yes
Airport Type: IFR
Landing Fee: No
Control Tower: Yes
Jet Start Unit: No
LLWS Alert: No
Beacon: Yes

Sunrise: 1231 Z
Sunset: 0104 Z

Runway Information

Runway: 09
Length x Width: 8222 ft x 197 ft
Surface Type: asphalt
TDZ-Elev: 13 ft
Lighting: Edge

Runway: 27
Length x Width: 8222 ft x 197 ft
Surface Type: asphalt
TDZ-Elev: 26 ft
Lighting: Edge

Communication Information

Zihuatanejo Tower: 118.300
Zihuatanejo Approach: 121.000
Mexico Control ACC: 125.100 RCO
Mexico Control ACC: 123.500 RCO
Mexico Control ACC: 126.150 RCO

Zihuatanejo Information: 122.300 AFIS

TMA



21 JUL 23

10-1B

IXTAPA-ZIHUATANEJO, MEXICO

IXTAPA-ZIHUATANEJO INTL

*ZIHUATANEJO Approach
121.0

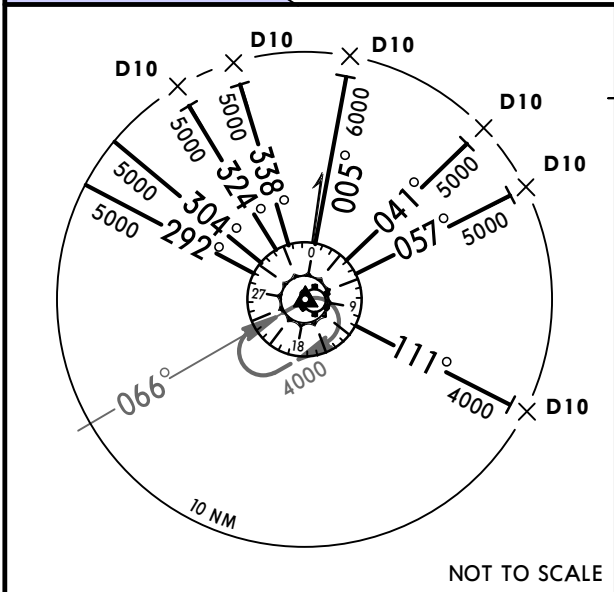
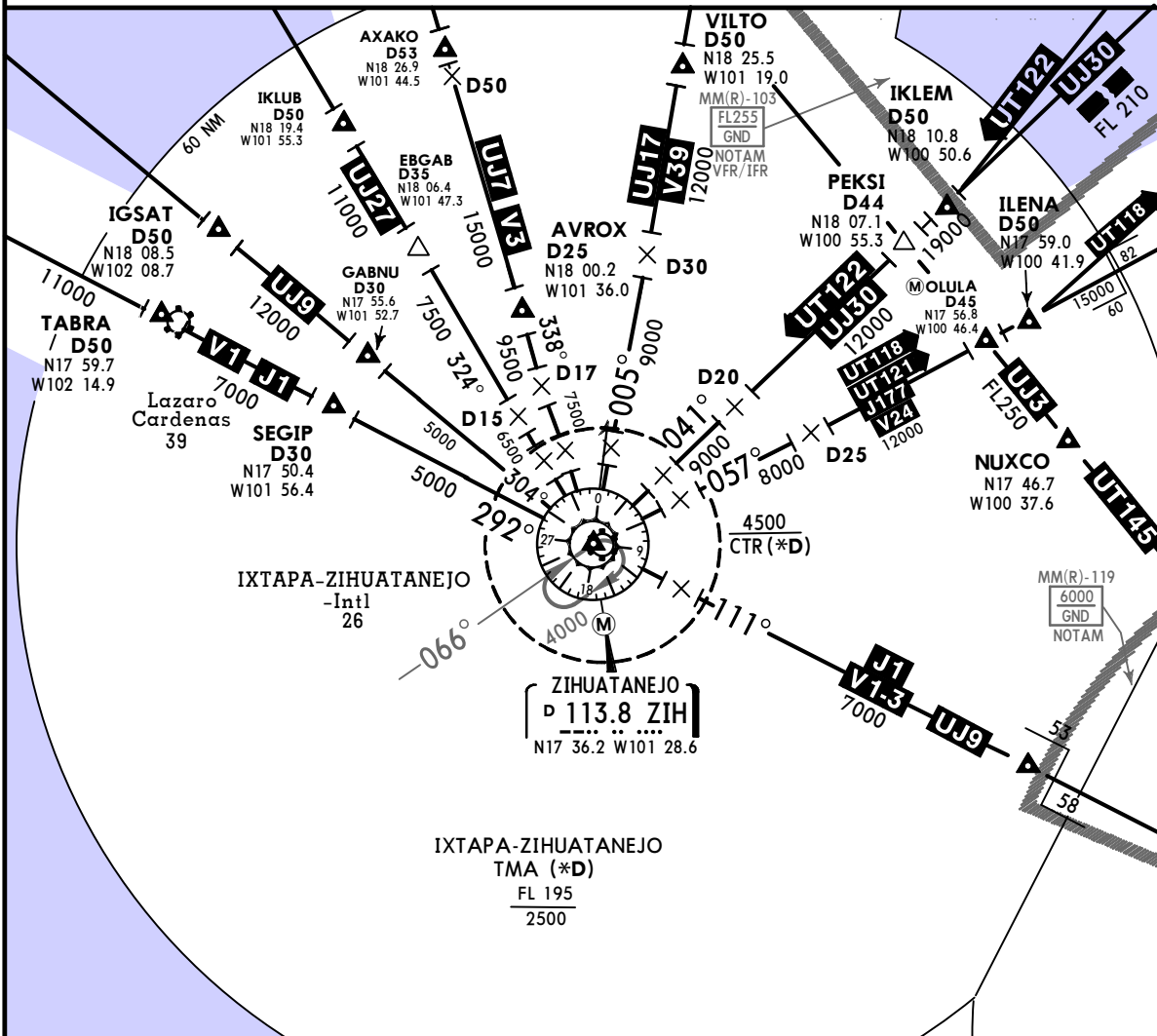
SPEED RESTRICTIONS WITHIN MEXICO AIRSPACE

Maximum IAS unless otherwise depicted or authorized by ATC

- Below 3000' AGL within 10NM of any airport.....200KTS
- Below 10000' MSL within Mexico Airspace.....250KTS
- Below 10000' AGL within 30NM of any airport.....250KTS

WITHIN IXTAPA-ZIHUATANEJO TMA

- At or below 3000' MSL within 10NM of ZIH VORDME.....200 KTS
- At or below 10000' MSL within 30NM of ZIH VORDME.....250 KTS



SID fixes should not be used for arrivals.

MMZH/ZIH
IXTAPA-ZIHUATANEJO INTL
IXTAPA-ZIHUATANEJO, MEXICO
JEPPesen
 18 FEB 22 (10-2) Eff: 24 Feb RNAV STAR

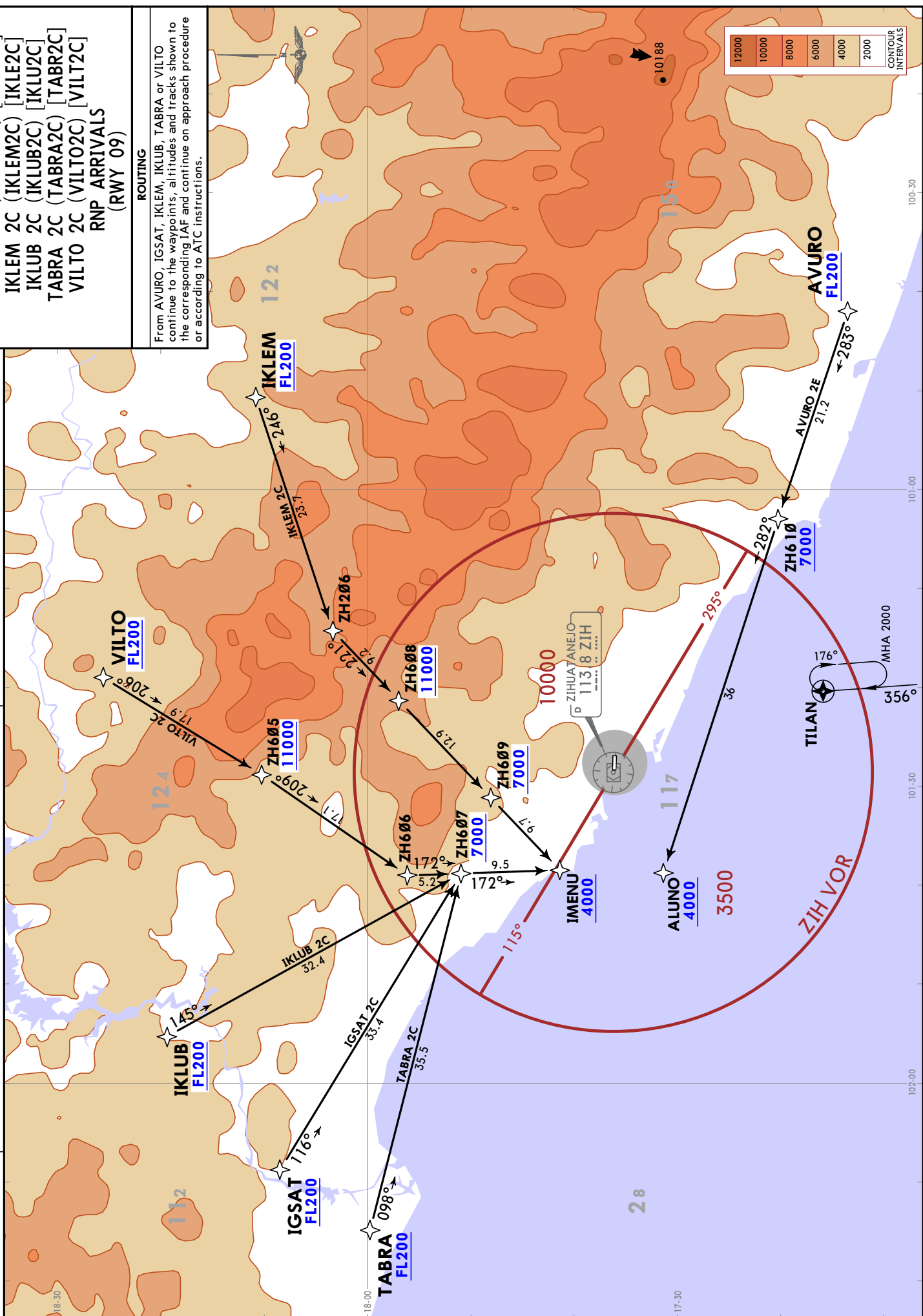
AVURO 2E (AVURO2E) [AVUR2E]
IGSAT 2C (IGSAT2C) [IGSA2C]
IKLEM 2C (IKLEM2C) [IKLE2C]
IKLUB 2C (IKLUB2C) [IKLU2C]
TABRA 2C (TABRA2C) [TABR2C]
VILTO 2C (VILTO2C) [VILT2C]
RNP ARRIVALS (RWY 09)

ROUTING
 From AVURO, IGSAT, IKLEM, IKLUB, TABRA or VILTO continue to the waypoints, altitudes and tracks shown to the corresponding IAF and continue on approach procedure or according to ATC instructions.

RNP 1
 GNSS required

Alt Set: hPa Trans level: FL195

Apt Elev 26



MMZH/ZIH
IXTAPA-ZIHUATANEJO INTL

JEPPESEN
18 FEB 22 (10-2A) Eff 24 Feb

IXTAPA-ZIHUATANEJO, MEXICO
RNAV STAR

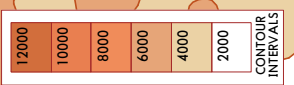
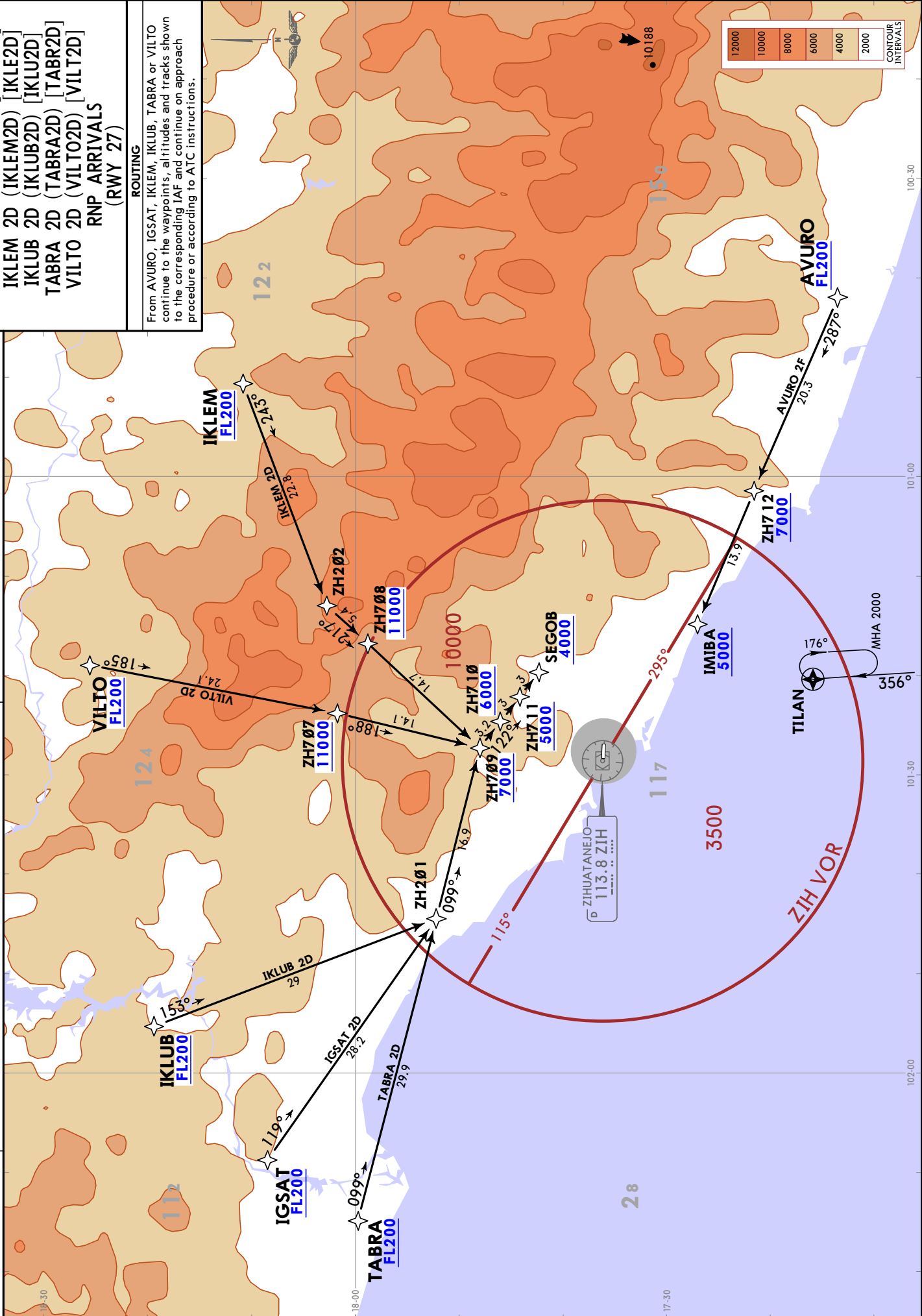
AVURO 2F (AVURO2F) [AVUR2F]
IGSAT 2D (IGSAT2D) [IGSA2D]
IKLEM 2D (IKLEM2D) [IKLE2D]
IKLUB 2D (IKLUB2D) [IKLU2D]
TABRA 2D (TABRA2D) [TABR2D]
VILTO 2D (VILTO2D) [VILT2D]
RNP ARRIVALS
(RWY 27)

ROUTING
From AVURO, IGSAT, IKLEM, IKLUB, TABRA or VILTO continue to the waypoints, altitudes and tracks shown to the corresponding IAF and continue on approach procedure or according to ATC instructions.

RNP 1
GNSS required

Alt Set: hPa Trans level: FL195

Apt Elev
26



JEYPESEN
 18 FEB 22 10-3 Eff 24 Feb
SID

MMZH/ZIH
 IXTAPA-ZIHUATANEJO INTL

Apt Elev
 26
 Trans alt: 18500

AVROX 4 (AVROX4)
EBGAB 4 (EBGAB4)
GABNU 4 (GABNU4)
SEGIP 3 (SEGIP3)
ZIHUATANEJO 3B (ZIH3B)
DEPARTURES
(RWY 27)

HOLDING OVER ZIH VOR



MINIMUM CROSSING ALTITUDE

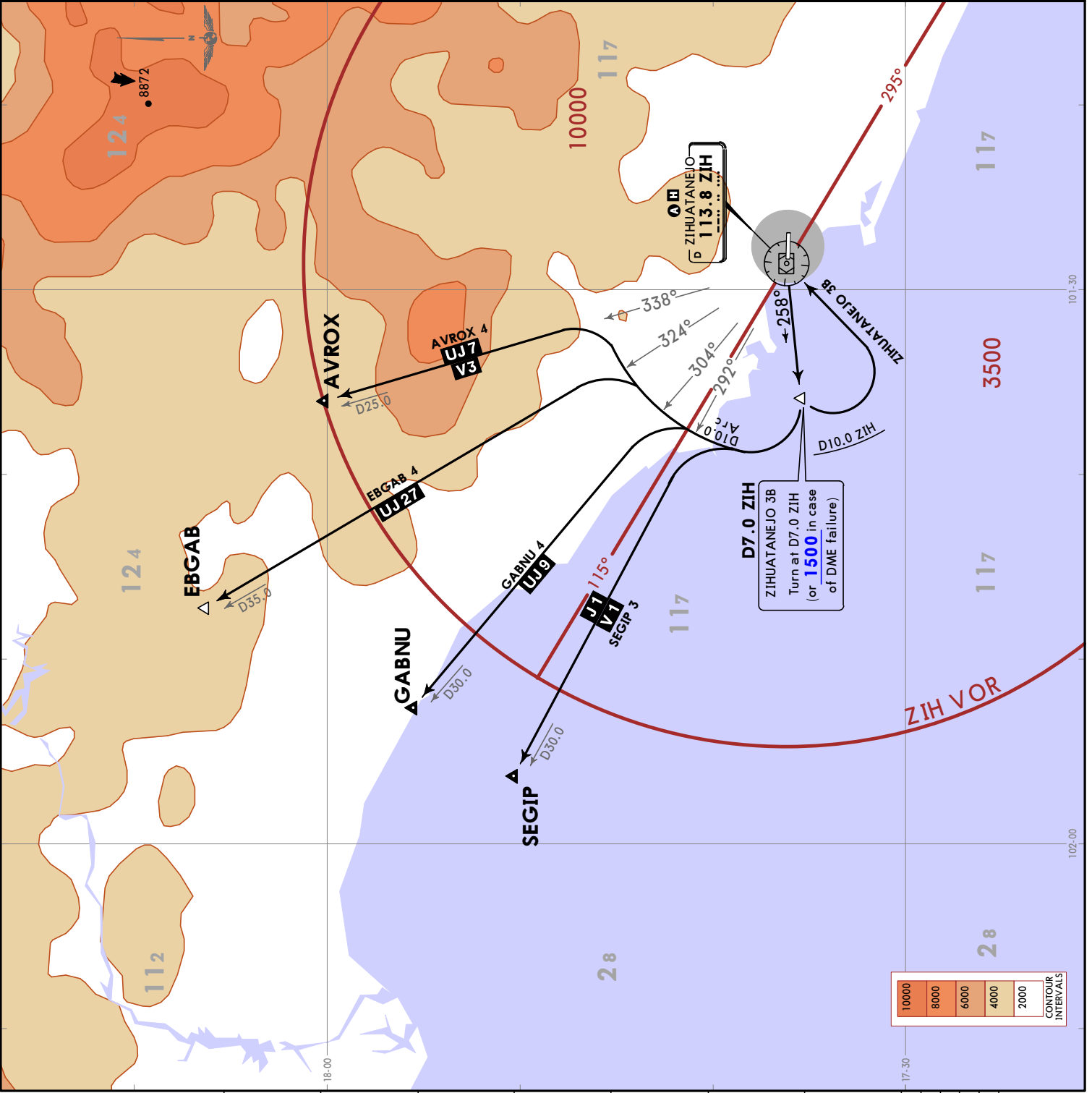
MIM	V-39	UJ-17	5000
TLC	UJ-30	UJ-30	8400
ILENA	V-24	J-177, UT-118-121	6500
ACA	V-1-3	J-1, UJ-9	3000
ZLO	V-1	J-1	3500
COL		UJ-9	4000
GDL		UJ-27	6000
UPN	V-3	UJ-7	5500

These SIDs require minimum climb gradients:
 AVROX 4: 380 per NM (6.25%) to 9000.
 EBGAB 4: 320 per NM (5.26%) to 8000.
 GABNU 4 and SEGIP 3: 240 per NM (3.94%) to 3000.

Grnd speed-KT	75	100	150	200	250	300
240 per NM	300	400	600	800	1000	1200
320 per NM	400	533	800	1067	1333	1600
380 per NM	475	633	950	1267	1583	1900

SID

AVROX 4	ROUTING
EBGAB 4	Climb via ZIH R258 to D7.0 ZIH, then turn RIGHT and proceed on the ZIH D10.0
GABNU 4	Arc to intercept the corresponding radial from ZIH VOR to SEGIP, GABNU
SEGIP 3	EBGAB or AVROX and continue on the assigned route or ATC instructions.
ZIHUATANEJO 3B	Climb via ZIH R258 to D7.0 ZIH (or 1500 in case of DME failure), then turn LEFT within D10.0 ZIH to ZIH VOR and cross ZIH VOR according to the MCA or ATC instructions.



MMZH/ZIH
 IXTAPA-ZIHUATANEJO INTL
JEPPESEN
 18 FEB 22 (10-3A) Eff 24 Feb
RNAV SID

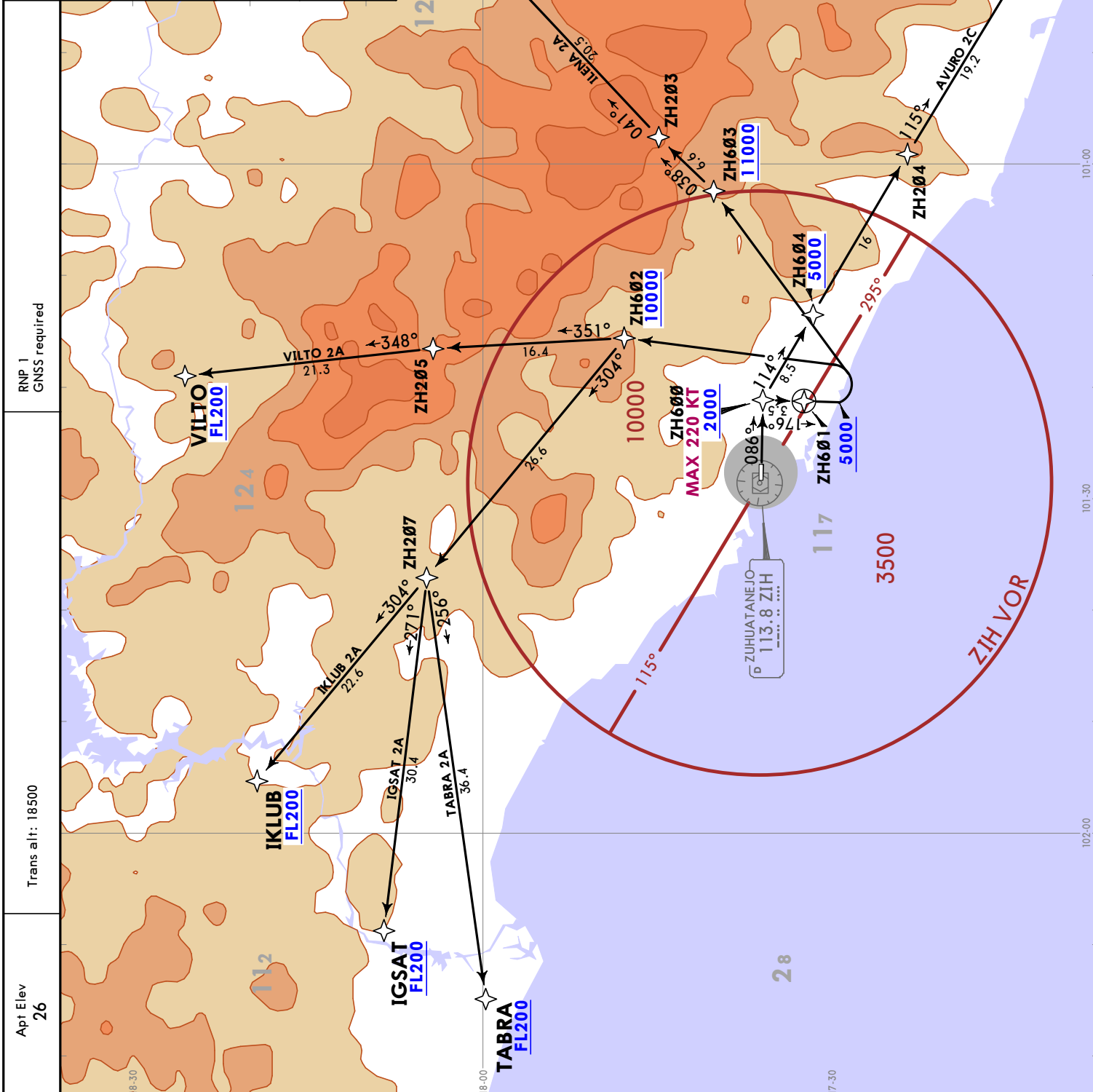
IXTAPA-ZIHUATANEJO, MEXICO

AVURO 2C (AVURO2C) [AVUR2C]
IGSAT 2A (IGSAT2A) [IGSA2A]
IKLUB 2A (IKLUB2A) [IKLU2A]
ILENA 2A (ILENA2A) [ILEN2A]
TABRA 2A (TABRA2A) [TABR2A]
VILTO 2A (VILTO2A) [VILT2A]
RNP DEPARTURES (RWY 09)

These SIDs require a minimum climb gradient of 360 per NM (5.9%) until crossing 6000.

Gnd speed-KT	75	100	150	200	250	300
360 per NM	450	600	900	1200	1500	1800

ROUTING
 Climb on course 086° to ZH600 at or above 2000, continue to the waypoints, altitudes and tracks shown to AVURO, IGSAT, IKLUB, ILENA, TABRA or VILTO and continue on the assigned route or according to ATC instructions.



Apt Elev 26
 Trans alt: 18500
 RNP 1
 GNSS required

JEPPESEN
18 FEB 22 (10-3B) Eff 24 Feb RNAV SID

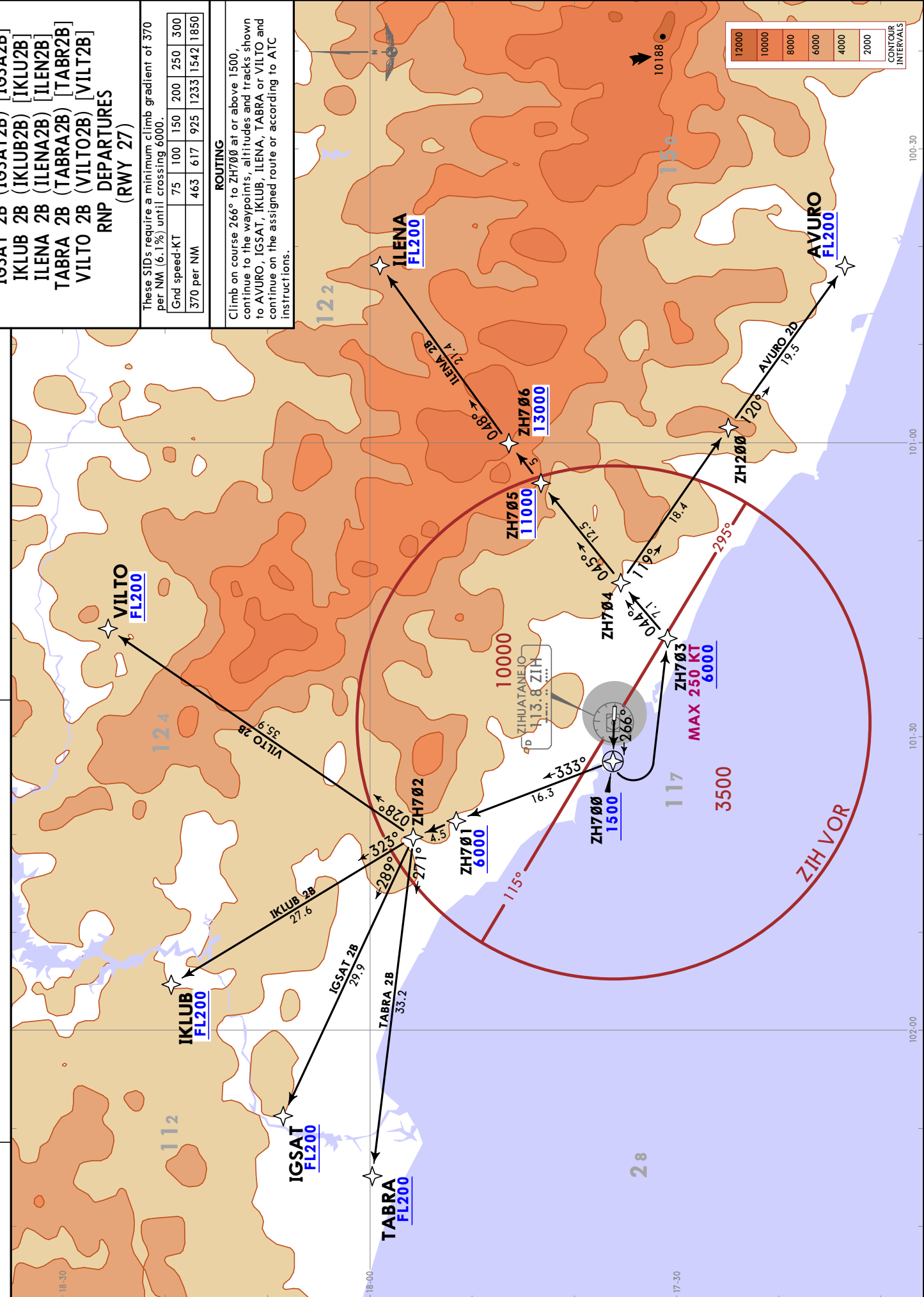
MMZH/ZIH
IXTAPA-ZIHUATANEJO INTL
Apt Elev 26
Trans alt: 18500
RNP 1
GNSS required

AVURO 2D (AVURO2D) [AVUR2D]
IGSAT 2B (IGSAT2B) [IGSA2B]
IKLUB 2B (IKLUB2B) [IKLU2B]
ILENA 2B (ILENA2B) [ILEN2B]
TABRA 2B (TABRA2B) [TABR2B]
VILTO 2B (VILTO2B) [VILT2B]
RNP DEPARTURES (RWY 27)

These SIDs require a minimum climb gradient of 370 per NM (6.1%) until crossing 6000.

Gnd speed-KT	75	100	150	200	250	300
370 per NM	463	617	925	1233	1542	1850

ROUTING
Climb on course 266° to ZH700 at or above 1500, continue to the waypoints, altitudes and tracks shown to AVURO, IGSAT, IKLUB, ILENA, TABRA or VILTO and continue on the assigned route or according to ATC instructions.



IXTAPA-ZIHUATANEJO, MEXICO

MMZH/ZIH



IXTAPA-ZIHUATANEJO INTL

18 FEB 22

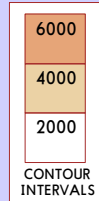
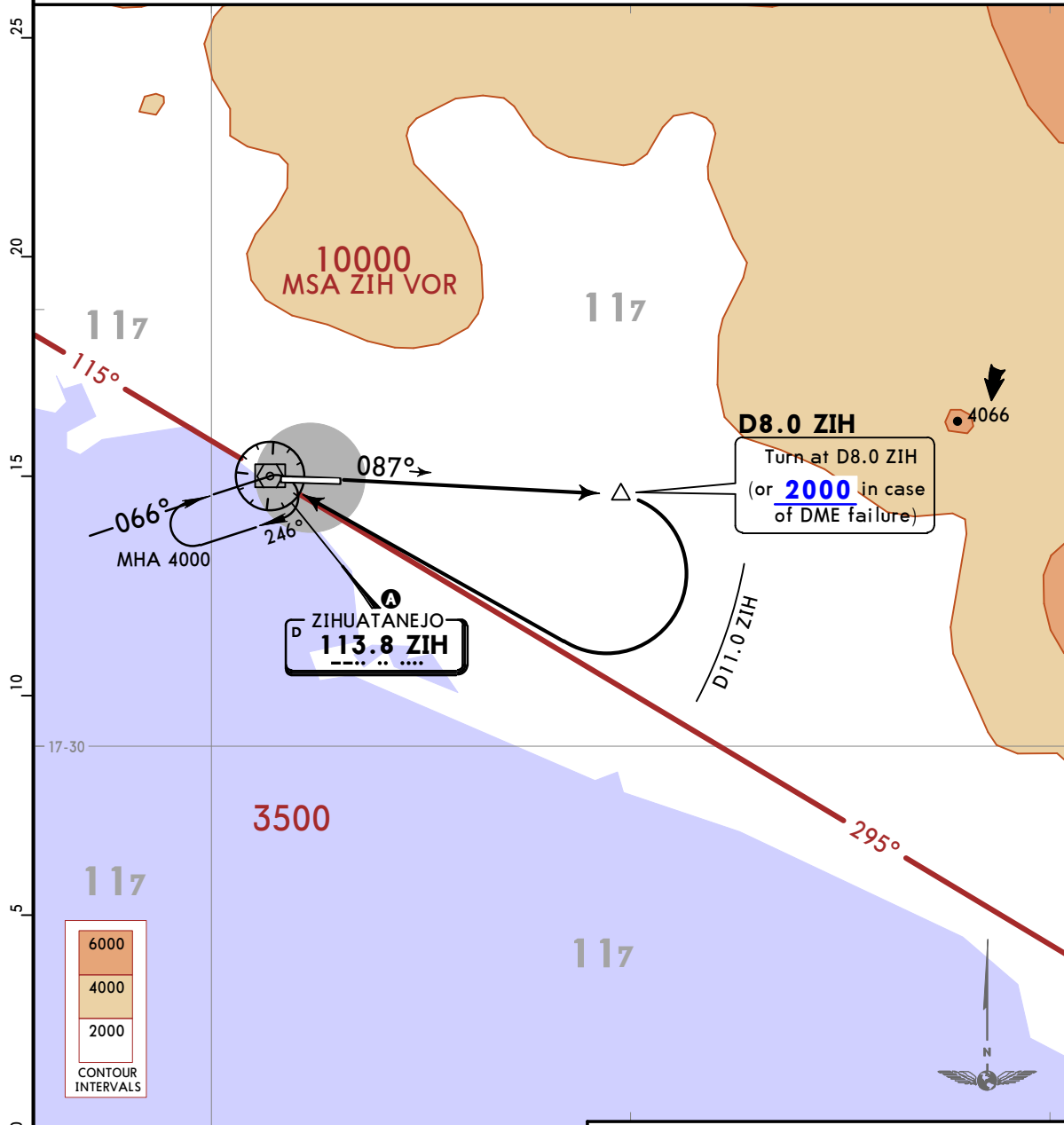
10-3C

Eff 24 Feb

SID

Apt Elev 26	Trans alt: 18500
----------------	------------------

ZIHUATANEJO 4A (ZIH4A) DEPARTURE (RWY 09)



A MINIMUM CROSSING ALTITUDE			
MLM	V-39	UJ-17	5000
TLC		UJ-30	8400
ILENA	V-24	J-177, UT-118-121	6500
ACA	V-1-3	J-1, UJ-9	3000
ZLO	V-1	J-1	3500
COL		UJ-9	4000
GDL		UJ-27	6000
UPN	V-3	UJ-7	5500

This SID requires a minimum climb gradient of 240 per NM (3.94%) to 1000.

Gnd speed-KT	75	100	150	200	250	300
240 per NM	300	400	600	800	1000	1200

INITIAL CLIMB

Climb on ZIH R087 to D8.0 ZIH (or 2000 in case of DME failure), turn RIGHT within D11.0 ZIH to ZIH VOR and cross ZIH VOR according to the MCA A or ATC instructions.

IXTAPA-ZIHUATANEJO, MEXICÓ

MMZH/ZIH

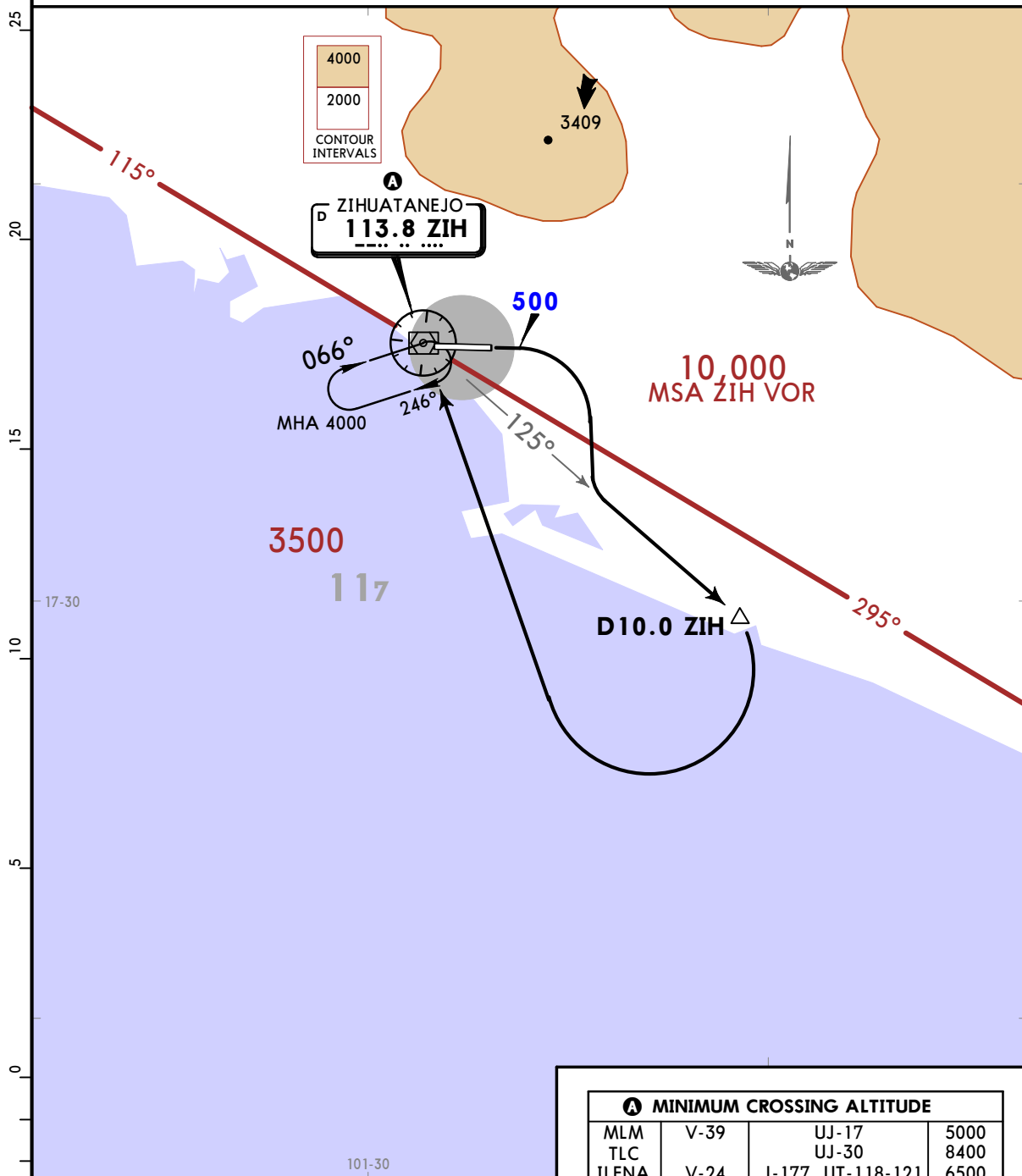


IXTAPA-ZIHUATANEJO INTL 6 AUG 21 (10-3D) Eff 12 Aug

SID

Apt Elev 26	Trans alt: 18500
-----------------------	------------------

ZIHUATANEJO 2C (ZIH2C) DEPARTURE (RWY 09)



This SID requires a minimum climb gradient of 240 per NM (3.94%) to 1000.

Gnd speed-KT	75	100	150	200	250	300
240 per NM	300	400	600	800	1000	1200

A MINIMUM CROSSING ALTITUDE			
MLM	V-39	UJ-17	5000
TLC		UJ-30	8400
ILENA	V-24	J-177, UT-118-121	6500
ACA	V-1-3	J-1, UJ-9	3000
ZLO	V-1	J-1	3500
COL		UJ-9	4000
GDL		UJ-27	6000
UPN	V-3	UJ-7	5500

INITIAL CLIMB

Climb on runway heading until reaching 500. Continue climb and intercept ZIH R125, at D10.0 ZIH turn RIGHT to ZIH VOR and cross ZIH VOR according to MCA **A** or ATC instructions.

MMZH/ZIH

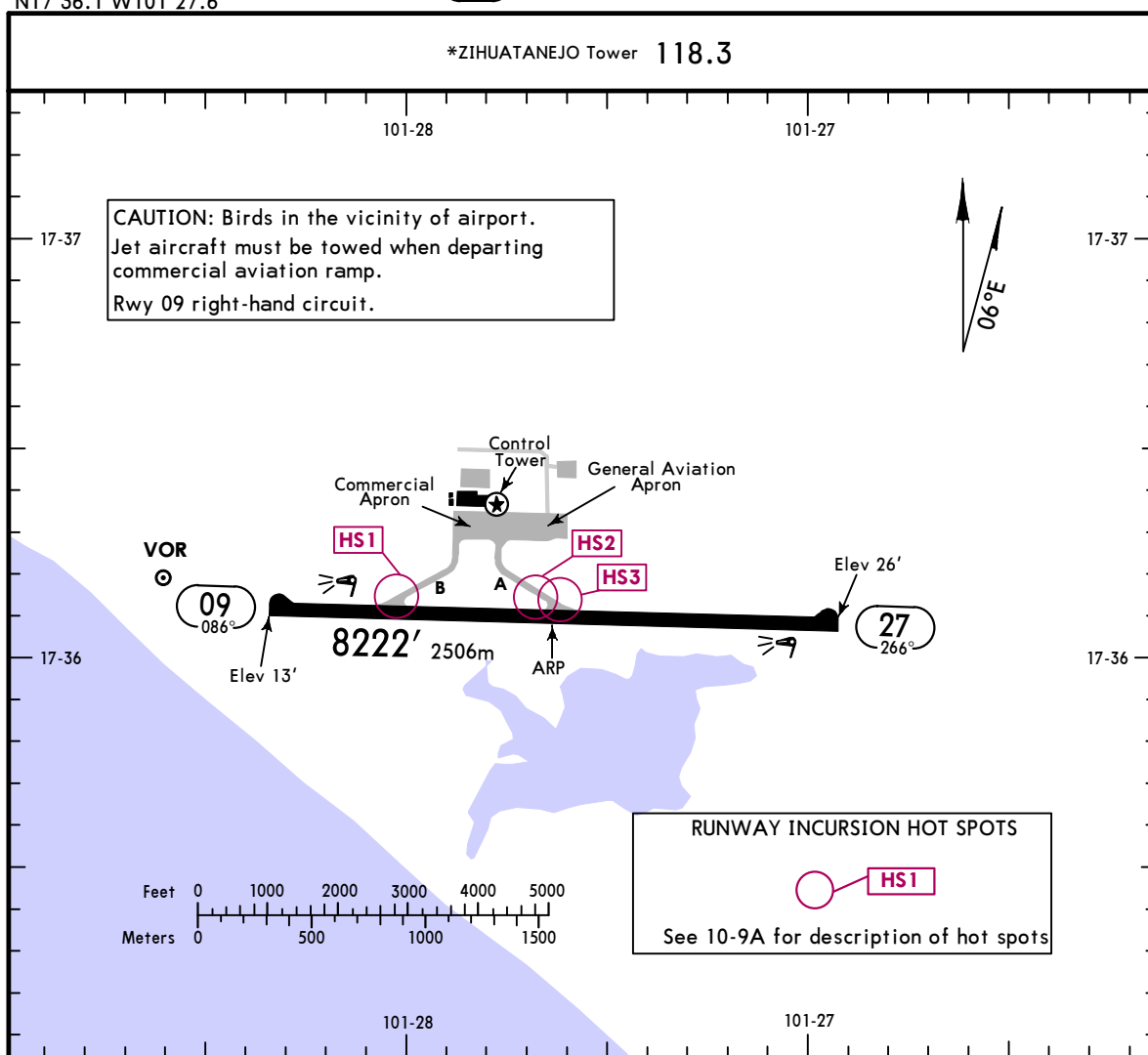
Apt Elev **26'**
N17 36.1 W101 27.6

JEPPESEN IXTAPA-ZIHUATANEJO, MEXICO

6 AUG 21 (10-9) Eff 12 Aug

IXTAPA-ZIHUATANEJO INTL

*ZIHUATANEJO Tower 118.3



ADDITIONAL RUNWAY INFORMATION

RWY		USABLE LENGTHS			WIDTH
		Threshold	Landing Beyond Glide Slope	TAKE-OFF	
09 27	HIRL PAPI-L (angle 3.0°)				197' 60m

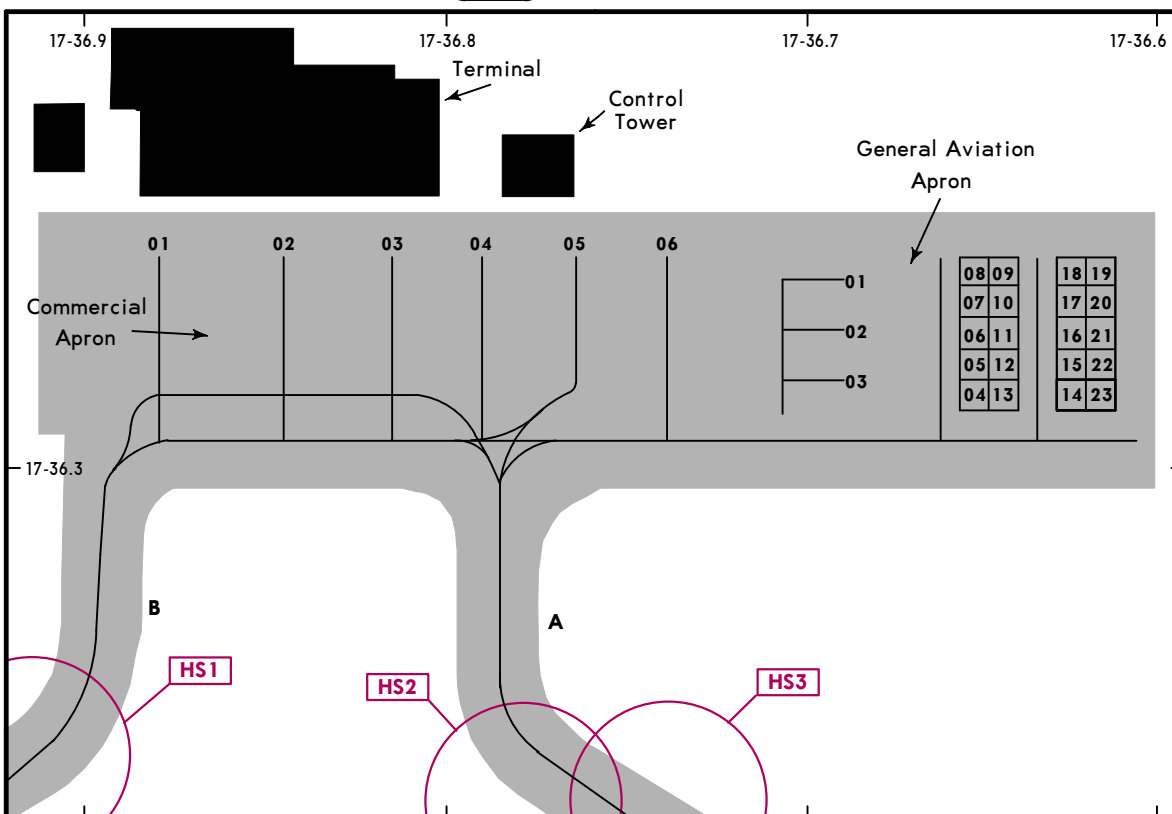
TAKE-OFF		FOR FILING AS ALTERNATE	
	All Rwys		
1 & 2 Eng	1	A	1000-2
3 & 4 Eng	1/2	B	
		C	
		D	

MMZH/ZIH

JEPPESEN IXTAPA-ZIHUATANEJO, MEXICO

6 AUG 21 **10-9A** Eff 12 Aug

IXTAPA-ZIHUATANEJO INTL



PARKING POSITION COORDINATES

POSITION No.	COORDINATES
Commercial Aviation	
01	N17 36.3 W101 27.9
02 thru 05	N17 36.3 W101 27.8
06	N17 36.3 W101 27.7
General Aviation	
01, 02, 03	N17 36.3 W101 27.7
04 thru 23	N17 36.3 W101 27.6

RUNWAY INCURSION HOT SPOTS HS1

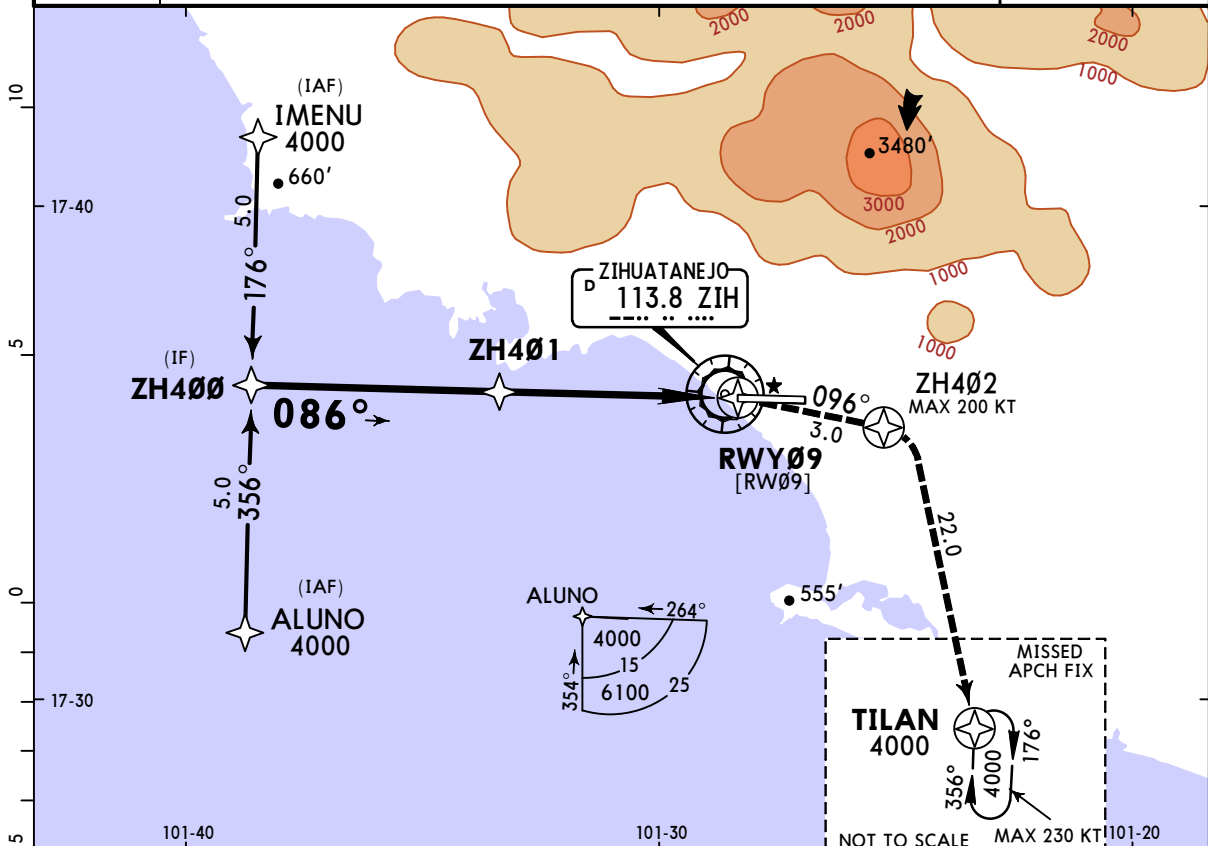
For information only, not to be construed as ATC instructions.

- HS1 Aircraft or vehicles at taxiway B hold short of runway 09/27.
- HS2 Aircraft or vehicles at taxiway A hold short of runway 09/27.
- HS3 Road on safety stripe, maintain to allowed distances from runway and taxiway A.

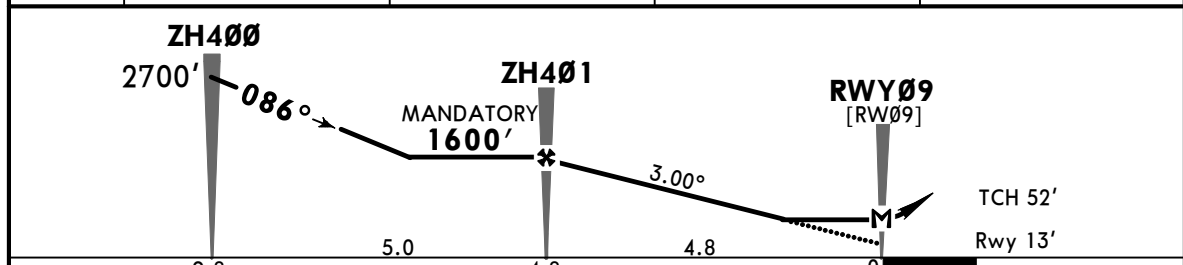
MMZH/ZIH JEPPESEN IXTAPA-ZIHUATANEJO, MEXICO

IXTAPA-ZIHUATANEJO INTL 6 AUG 21 (12-1) Eff 12 Aug RNP Rwy 09

*ZIHUATANEJO Approach				*ZIHUATANEJO Tower	
121.0				118.3	
RNAV	Final Apch Crs 086°	Mandatory Alt ZH401 1600' (1587')	LNAV MDA(H) 500' (487')	Apt Elev 26'	Rwy 13'
MISSED APCH: Climb on track 096° to ZH402 and proceed on the missed approach track to TILAN and hold at 4000'.					
Alt Set: MB (IN on req)		Rwy Elev: 0 MB	Trans level: FL 195	Trans alt: 18500'	
RNP Apch	GNSS required.				
					MSA ZIH VOR



DIST to THR	4.8	4.0	3.0	2.0
ALTITUDE	1600'	1340'	1020'	700'



Gnd speed-Kts	70	90	100	120	140	160	PAPI-L	↑ on 096° ZH402
Descent Angle	3.00°	372	478	531	637	743		
MAP at RWY09								

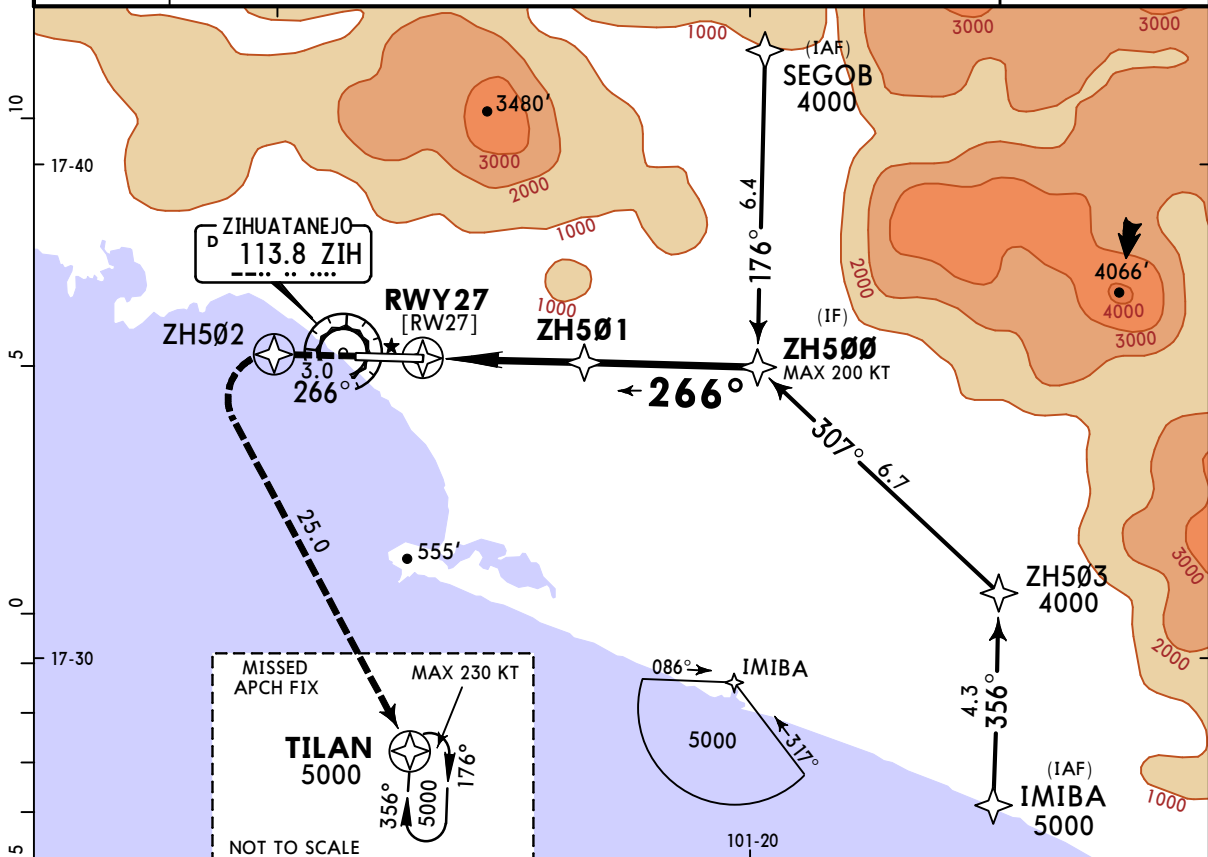
STRAIGHT-IN LANDING RWY 09				CIRCLE-TO-LAND Not Authorized North of Runway			
LNAV				Max Kts			
MDA(H) 500' (487')				MDA(H)			
A	1			90	800' (774') - 1		
B	1			120	800' (774') - 1¼		
C	1¼			140	800' (774') - 2¼		
D	1½			165	800' (774') - 2½		

MMZH/ZIH

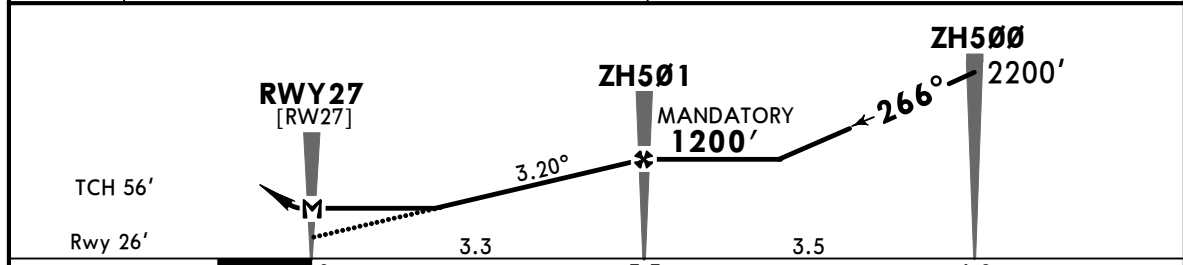
JEPPESEN IXTAPA-ZIHUATANEJO, MEXICO

IXTAPA-ZIHUATANEJO INTL 6 AUG 21 (12-2) Eff 12 Aug RNP Rwy 27

*ZIHUATANEJO Approach			*ZIHUATANEJO Tower		
121.0			118.3		
RNAV	Final Apch Crs 266°	Mandatory Alt ZH501 1200' (1174')	LNAV MDA(H) 780' (754')	Apt Elev 26'	Rwy 26'
MISSED APCH: Climb on track 266° to ZH502 and proceed on the missed approach track to TILAN and hold at 5000'.					
Alt Set: MB (IN on req)		Rwy Elev: 0 MB	Trans level: FL 195	Trans alt: 18500'	
RNP Apch	GNS required.				MSA ZIH VOR



DIST to THR	3.0	3.3
ALTITUDE	1100'	1200'



Gnd speed-Kts	70	90	100	120	140	160	PAPI-L	↑ on 266° ZH502
Descent Angle	3.20°	396	510	566	679	793		
MAP at RWY 27								

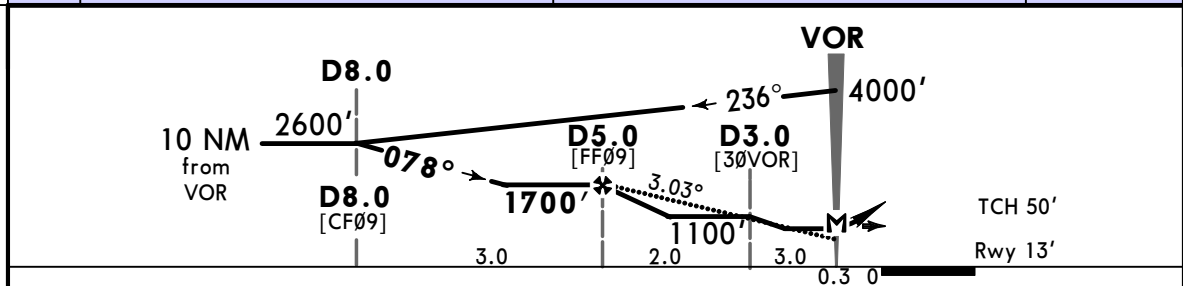
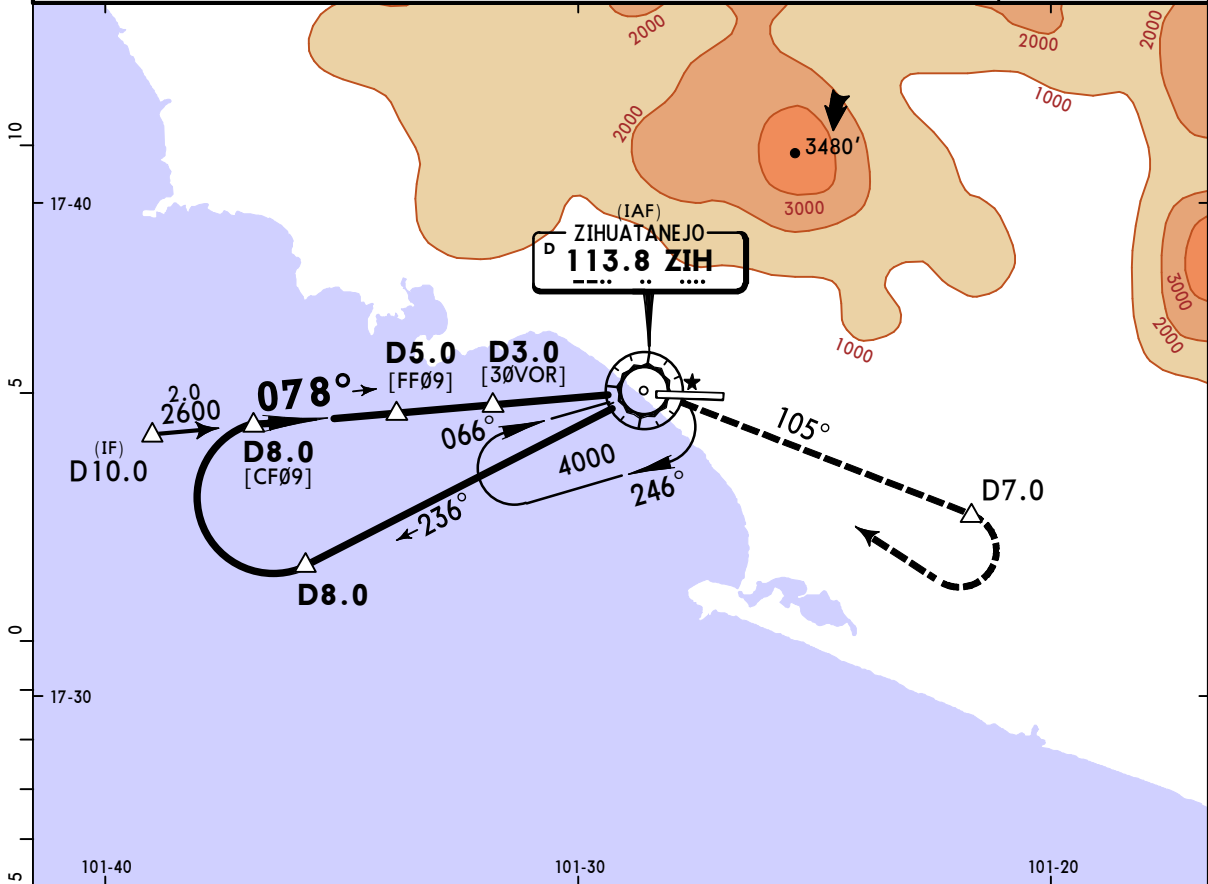
STRAIGHT-IN LANDING RWY 27			CIRCLE-TO-LAND		
LNAV			Not Authorized North of Runway		
MDA(H) 780' (754')			Max Kts	MDA(H)	
A	1		90	800' (774') - 1	
B	1¼		120	800' (774') - 1¼	
C	2¼		140	800' (774') - 2¼	
D	2½		165	800' (774') - 2½	

MMZH/ZIH

JEPPESEN IXTAPA-ZIHUATANEJO, MEXICO

IXTAPA-ZIHUATANEJO INTL 6 AUG 21 **13-1** Eff 12 Aug VOR DME 1 Rwy 09

*ZIHUATANEJO Approach				*ZIHUATANEJO Tower	
121.0				118.3	
VOR ZIH 113.8	Final Apch Crs 078°	D5.0 1700' (1687')	MDA(H) 460' (447')	Apt Elev 26'	Rwy 13'
MISSED APCH: Climb outbound via ZIH VOR R-105 to D7.0, then turn RIGHT within 10 NM to ZIH VOR at the minimum holding altitude.					
Alt Set: MB (IN on req) Rwy Elev: 0 MB Trans level: FL 195 Trans alt: 18500' MSA ZIH VOR					



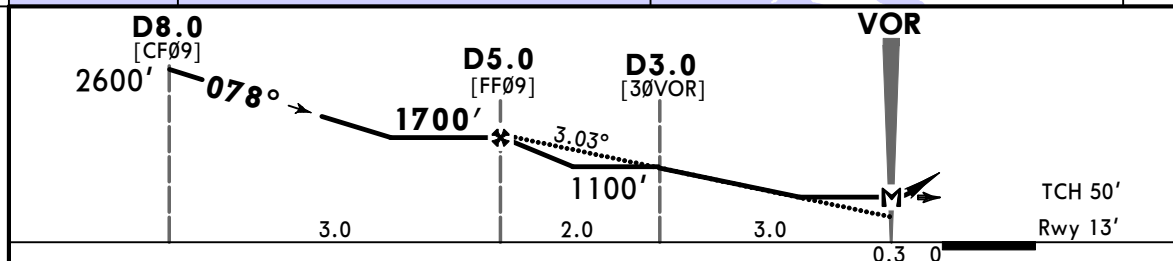
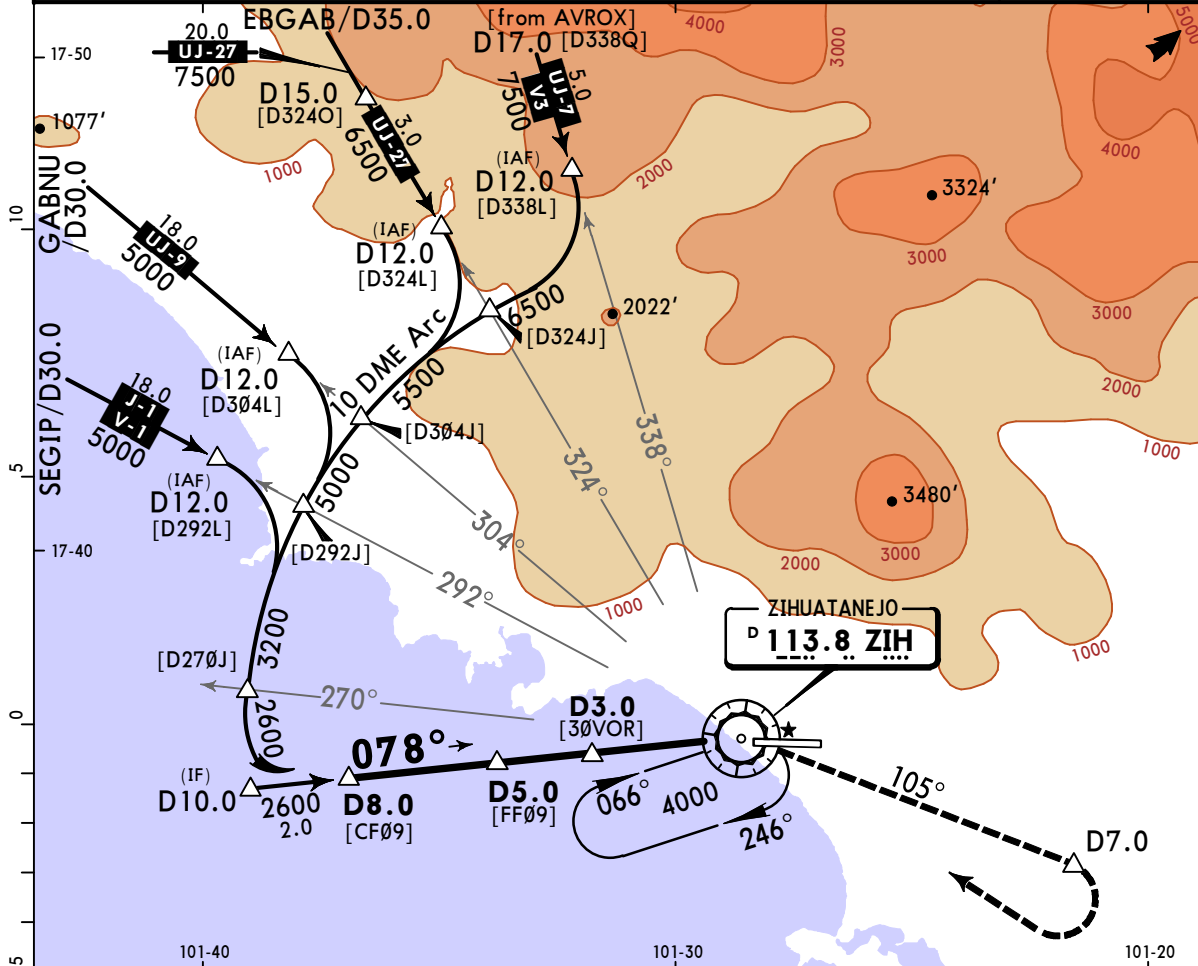
Gnd speed-Kts	70	90	100	120	140	160	PAPI-L	↑	ZIH 113.8	D7.0
Descent Angle	3.03°	375	482	536	643	750			858	
MAP at VOR										

STRAIGHT-IN LANDING RWY 09			CIRCLE-TO-LAND		
MDA(H) 460' (447')			Not Authorized North of Runway		
A		1	Max Kts	MDA(H)	
B		1	90	660' (634') - 1	
C		1¼	120	660' (634') - 1¾	
D		1½	140	660' (634') - 2	
			165	660' (634') - 2	

MMZH/ZIH JEPPESEN IXTAPA-ZIHUATANEJO, MEXICO

IXTAPA-ZIHUATANEJO INTL 6 AUG 21 **13-2** Eff 12 Aug VOR DME 2 Rwy 09

*ZIHUATANEJO Approach 121.0			*ZIHUATANEJO Tower 118.3		
VOR ZIH 113.8	Final Apch Crs 078°	D5.0 1700' (1687')	MDA(H) 460' (447')	Apt Elev 26'	Rwy 13'
MISSED APCH: Climb outbound via ZIH VOR R-105 to D7.0, then turn RIGHT within 10 NM to ZIH VOR at the minimum holding altitude.					
Alt Set: MB (IN on req) Rwy Elev: 0 MB Trans level: FL 195			Trans alt: 18500'		

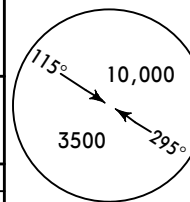


Gnd speed-Kts	70	90	100	120	140	160	PAPI-L	ZIH 113.8	D7.0 R-105
Descent Angle	3.03°	375	482	536	643	750			
MAP at VOR									

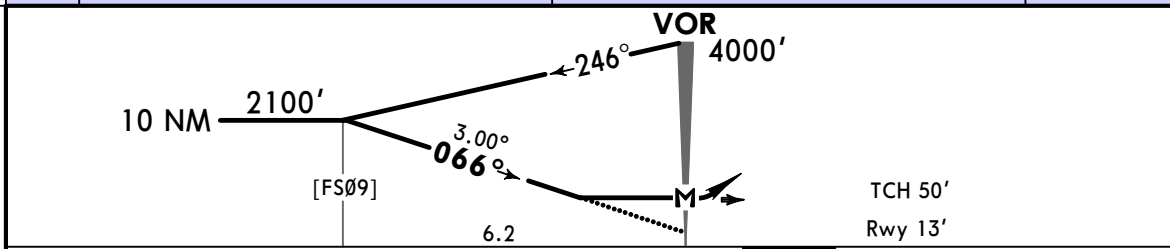
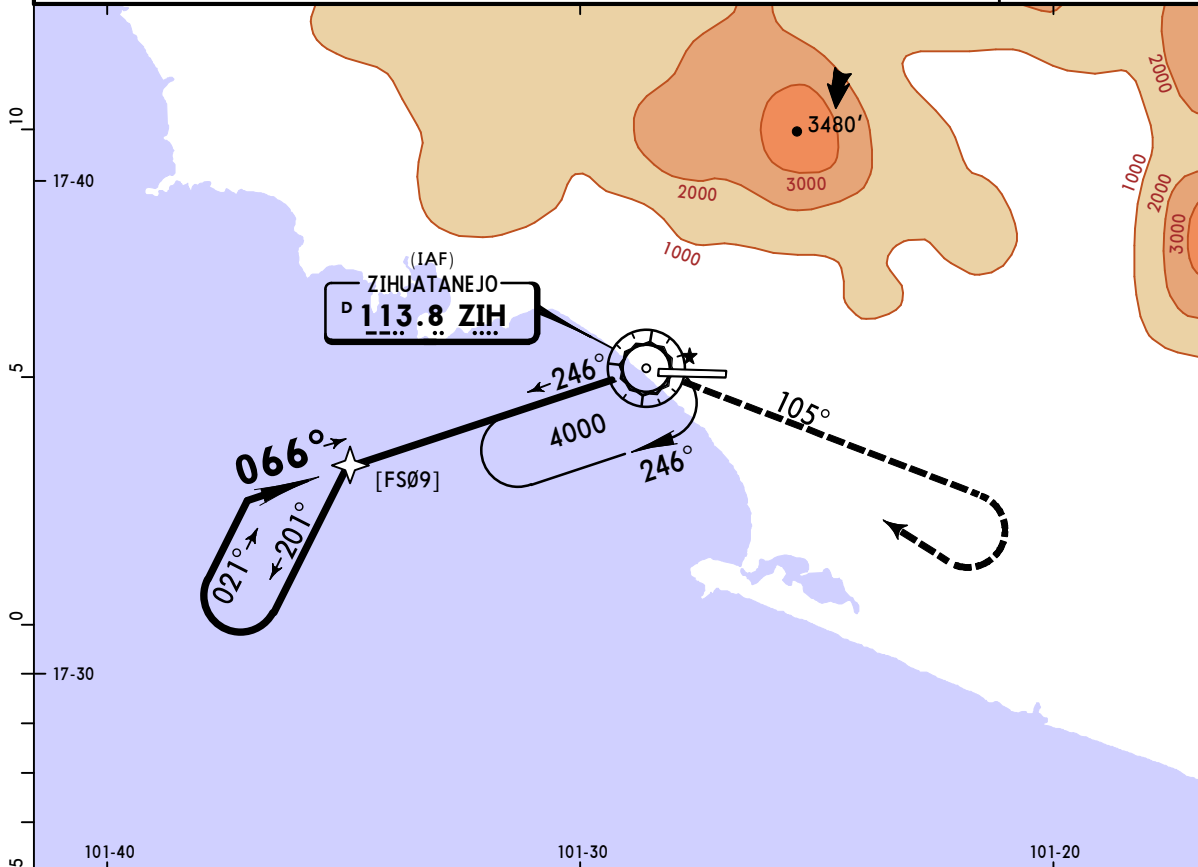
STRAIGHT-IN LANDING RWY 09			CIRCLE-TO-LAND		
MDA(H) 460' (447')			Not Authorized North of Runway		
			Max Kts	MDA(H)	
A		1	90	660' (634') - 1	
B			120		
C		1¼	140	660' (634') - 1¾	
D		1½	165	660' (634') - 2	

MMZH/ZIH
IXTAPA-ZIHUATANEJO INTL 6 AUG 21 **(13-3)** **Eff 12 Aug** **IXTAPA-ZIHUATANEJO, MEXICO**
VOR Rwy 09

*ZIHUATANEJO Approach 121.0			*ZIHUATANEJO Tower 118.3																									
VOR ZIH 113.8	Final Apch Crs 066°	No FAF	MDA(H) 600' (587')	Apt Elev 26' Rwy 13'																								
MISSED APCH: Climb outbound via ZIH VOR R-105, then turn RIGHT within 10 NM to ZIH VOR at the minimum holding altitude.																												
<table border="1"> <tr> <td colspan="7">MISSED APCH: Max Distance Outbound Track 7 NM</td> </tr> <tr> <td>Gnd speed-Kts</td> <td>80</td> <td>100</td> <td>120</td> <td>140</td> <td>160</td> <td>180</td> <td>200</td> </tr> <tr> <td>Time</td> <td>5:15</td> <td>4:12</td> <td>3:30</td> <td>3:00</td> <td>2:37</td> <td>2:20</td> <td>2:06</td> </tr> </table>						MISSED APCH: Max Distance Outbound Track 7 NM							Gnd speed-Kts	80	100	120	140	160	180	200	Time	5:15	4:12	3:30	3:00	2:37	2:20	2:06
MISSED APCH: Max Distance Outbound Track 7 NM																												
Gnd speed-Kts	80	100	120	140	160	180	200																					
Time	5:15	4:12	3:30	3:00	2:37	2:20	2:06																					
Alt Set: MB (IN on req)		Rwy Elev: 0 MB	Trans level: FL 195	Trans alt: 18500'																								



MSA ZIH VOR

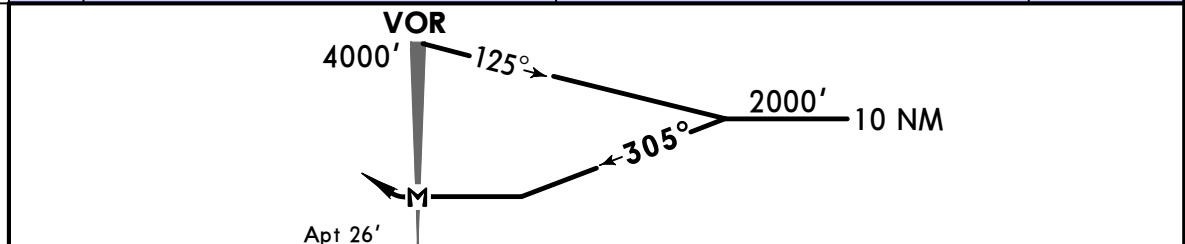
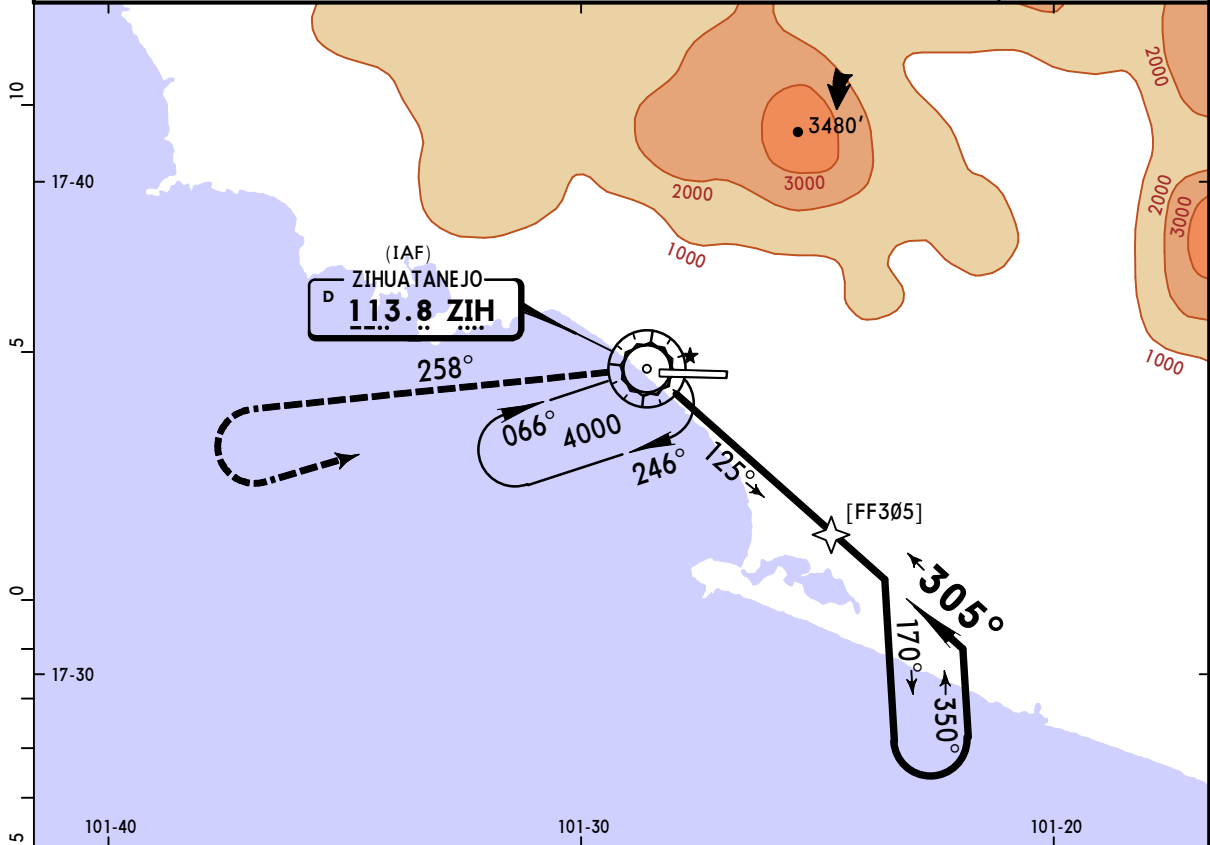


Gnd speed-Kts	70	90	100	120	140	160	PAPI-L	↑	ZIH 113.8 R-105
Descent Angle 3.00°	372	478	531	637	743	849			
MAP at VOR									

STRAIGHT-IN LANDING RWY 09			CIRCLE-TO-LAND		
MDA(H) 600' (587')			Not Authorized North of Runway		
A			Max Kts	MDA(H)	
B	1		90	660' (634') - 1	
C	1½		140	660' (634') - 1¾	
D	1¾		165	660' (634') - 2	

MMZH/ZIH **JEPPESEN** **IXTAPA-ZIHUATANEJO, MEXICO**
IXTAPA-ZIHUATANEJO INTL 6 AUG 21 **13-4** **Eff 12 Aug** **VOR-A**

*ZIHUATANEJO Approach				*ZIHUATANEJO Tower																		
121.0				118.3																		
VOR ZIH 113.8	Final Apch Crs 305°	No FAF	MDA(H) Refer to Minimums	Apt Elev 26'			<p>MSA ZIH VOR</p>															
MISSED APCH: Climb outbound via ZIH VOR R-258, then turn LEFT within 10 NM to ZIH VOR at the minimum holding altitude.																						
MISSED APCH: Max Distance Outbound Track 7 NM <table border="1"> <tr> <td>Gnd speed-Kts</td> <td>80</td> <td>100</td> <td>120</td> <td>140</td> <td>160</td> <td>180</td> <td>200</td> </tr> <tr> <td>Time</td> <td>5:15</td> <td>4:12</td> <td>3:30</td> <td>3:00</td> <td>2:37</td> <td>2:20</td> <td>2:06</td> </tr> </table>								Gnd speed-Kts	80	100	120	140	160	180	200	Time	5:15	4:12	3:30	3:00	2:37	2:20
Gnd speed-Kts	80	100	120	140	160	180	200															
Time	5:15	4:12	3:30	3:00	2:37	2:20	2:06															
Alt Set: MB (IN on req)	Apt Elev: 1 MB	Trans level: FL 195	Trans alt: 18500'																			



MAP at VOR	Lighting - Refer to Airport Chart	ZIH 113.8 R-258
------------	-----------------------------------	-------------------------------------

CIRCLE-TO-LAND	
Not Authorized North of Runway	
	MDA(H)
A Max Kts 90	660'(634') - 1
B 120	660'(634') - 1 3/4
C 140	660'(634') - 2
D 165	660'(634') - 2