

General Information

Location: COLIMA MEX
ICAO/IATA: MMIA / CLQ
Lat/Long: N19° 16.6', W103° 34.7'
Elevation: 2467 ft

Airport Use: Public
Daylight Savings: Not Observed
UTC Conversion: +6:00 = UTC
Magnetic Variation: 8.0° E

Fuel Types: 100 Octane (LL), Jet A
Customs: Yes
Airport Type: IFR
Landing Fee: No
Control Tower: Yes
Jet Start Unit: No
LLWS Alert: No
Beacon: Yes

Sunrise: 1252 Z
Sunset: 0025 Z

Runway Information

Runway: 07
Length x Width: 7546 ft x 148 ft
Surface Type: asphalt
TDZ-Elev: 2431 ft
Lighting: Edge

Runway: 25
Length x Width: 7546 ft x 148 ft
Surface Type: asphalt
TDZ-Elev: 2467 ft
Lighting: Edge

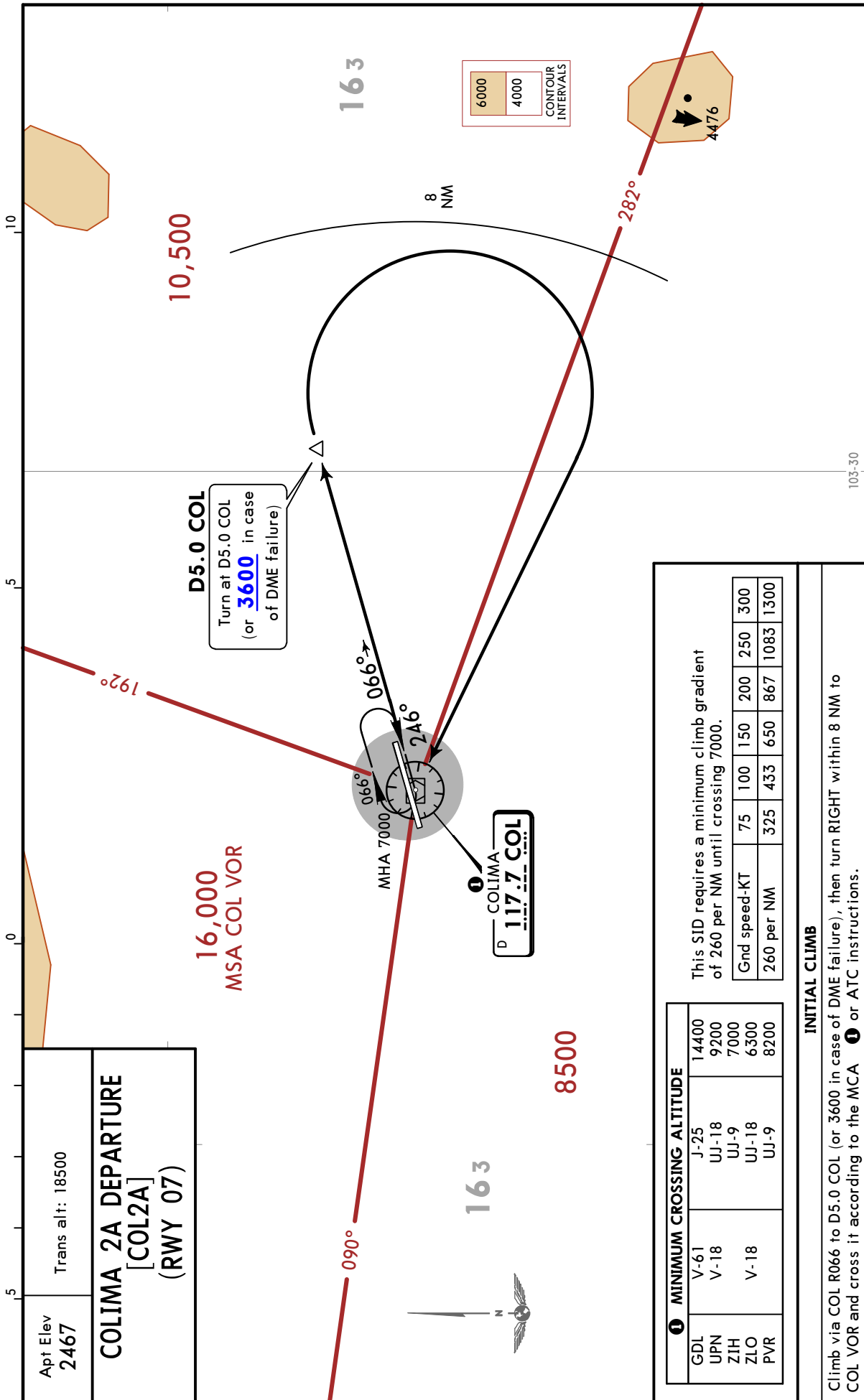
Communication Information

Colima Tower: 118.900
Manzanillo Approach: 118.700

MMIA/CLQ
COLIMA

JEPPESEN
1 NOV 19 10-3 Eff 7 Nov

COLIMA, MEXICO
SID



Apt Elev
2467
Trans alt: 18500

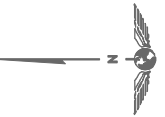
COLIMA 2A DEPARTURE
[COL2A]
(RWY 07)

16,000
MSA COL VOR

10,500

D5.0 COL
Turn at D5.0 COL
(or **3600** in case
of DME failure)

163



163

8500

MHA 7000

117.7 COL

8 NM

6000
4000
CONTOUR
INTERVALS

This SID requires a minimum climb gradient
of 260 per NM until crossing 7000.

Gnd speed-KT	75	100	150	200	250	300
260 per NM	325	433	650	867	1083	1300

① MINIMUM CROSSING ALTITUDE	
GDL	V-61 14400
UPN	V-18 9200
ZIH	UJ-18 7000
ZLO	UJ-18 6300
PVR	UJ-9 8200

INITIAL CLIMB

Climb via COL R066 to D5.0 COL (or 3600 in case of DME failure), then turn **RIGHT** within 8 NM to COL VOR and cross it according to the MCA ① or ATC instructions.

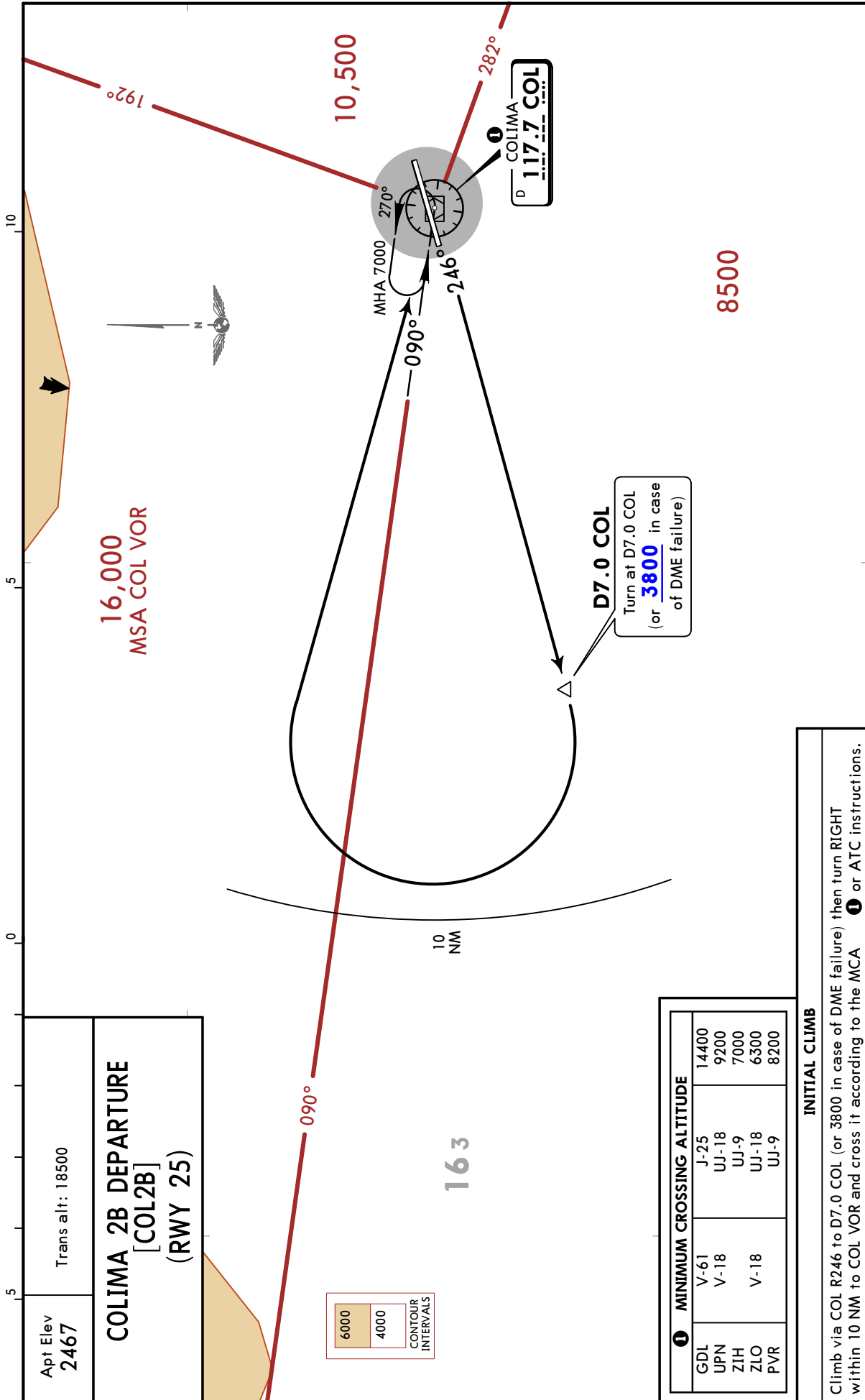
MMIA/CLQ
COLIMA

JEPPESEN

COLIMA, MEXICO

1 NOV 19 (10-3A) Eff 7 Nov

SID



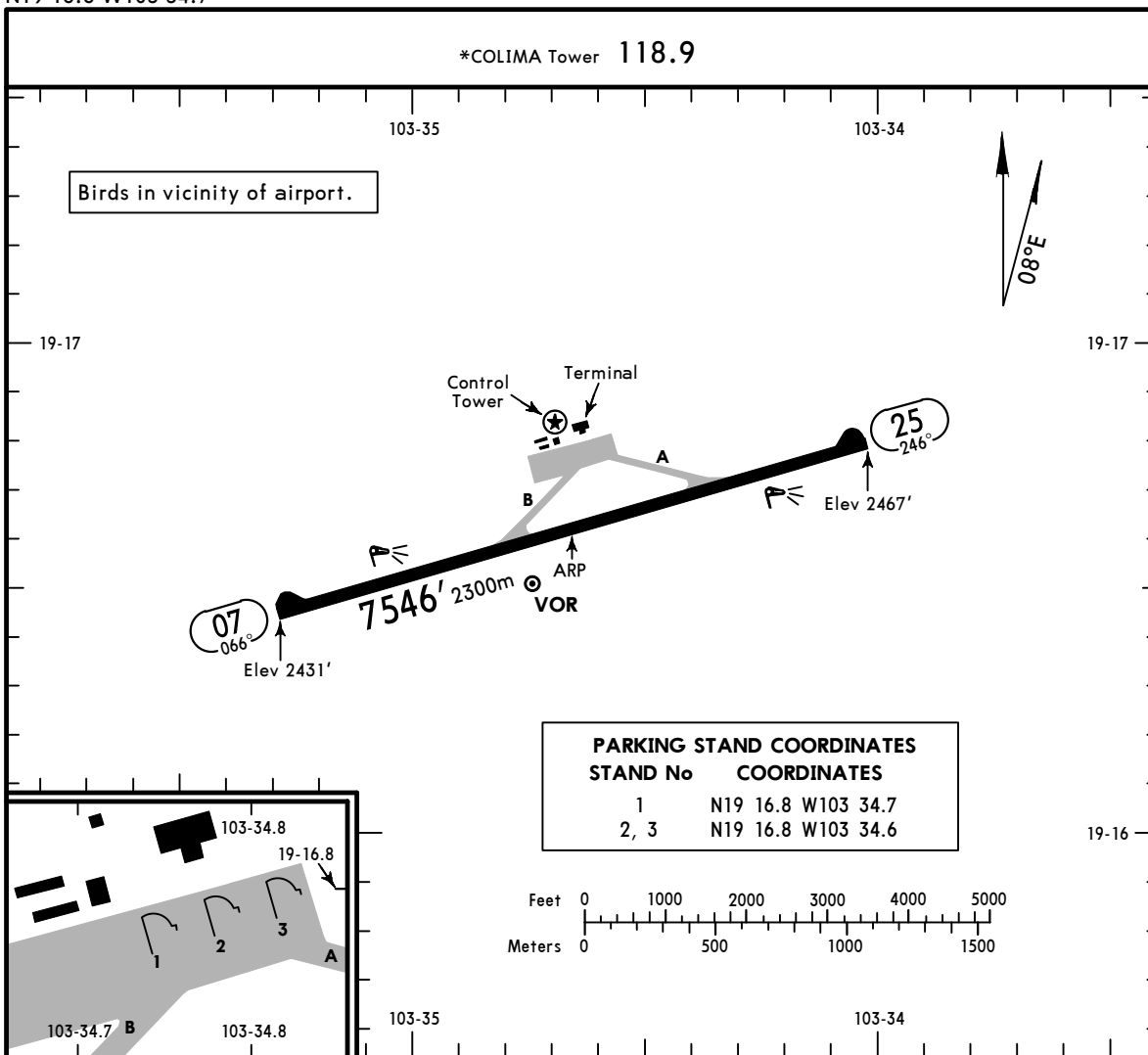
CHANGES: COL VOR now non-compulsory.

© JEPPESEN, 2019. ALL RIGHTS RESERVED.

MMIA/CLQ
 Apt Elev **2467'**
 N19 16.6 W103 34.7

JEPPESEN
 27 SEP 24 (10-9) Eff 3 Oct

COLIMA, MEXICO
 COLIMA



ADDITIONAL RUNWAY INFORMATION					
RWY		USABLE LENGTHS			WIDTH
		LANDING BEYOND	TAKE-OFF		
		Threshold			Glide Slope
07	25	HIRL PAPI-L (angle 3.0°)			148' 45m

State		TAKE-OFF				
1 HIRL & CL (spacing 15m or less) & relevant RVR	RL & CL & relevant RVR	RL & CL	2 RL & RCLM	2 RL or RCLM	Adequate Vis Ref	
					DAY	NIGHT
TDZ/Mid/Rollout R4 R125m	TDZ/Mid/Rollout R5 R150m	R6 R/V200m	R10 R/V300m	R12 R/V400m	R16 R/V500m	NA

1 TDZ/Mid/Rollout R3 or R75m with approved lateral guidance system.
2 For NIGHT operations, at least RL or CL and RENL are required.

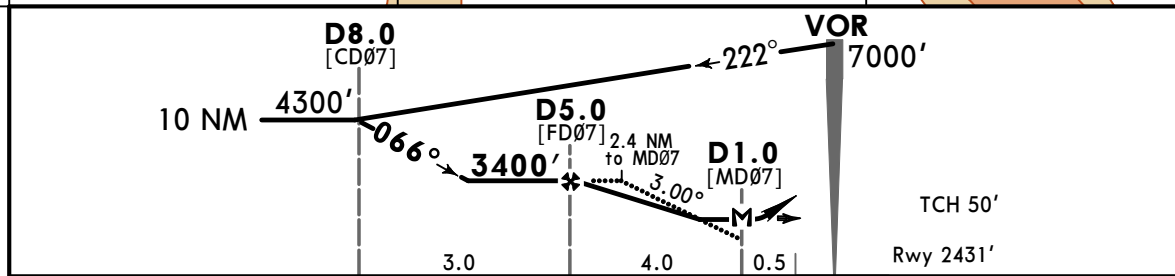
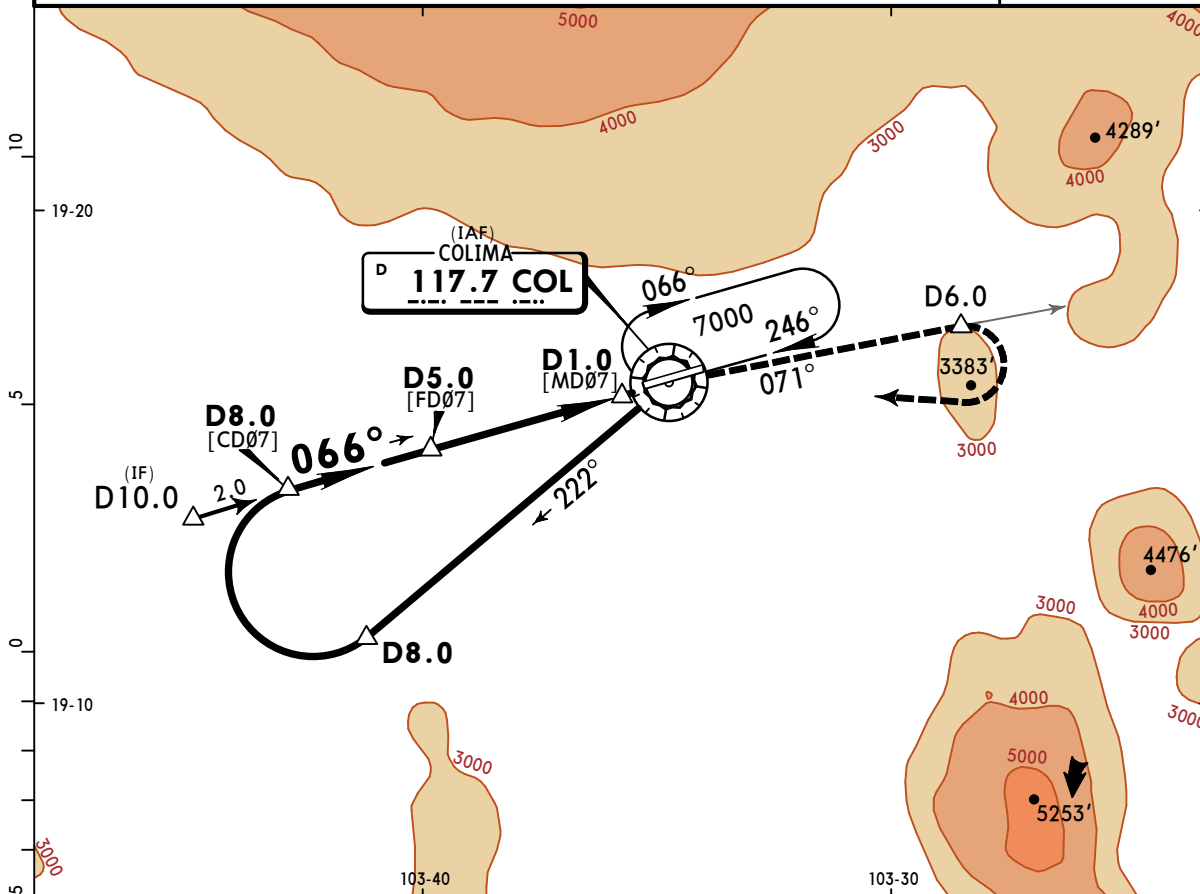
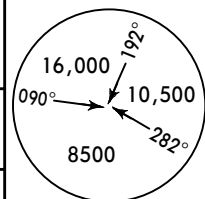
The TDZ RVR/VIS may be assessed by the pilot.
 Adequate visual reference means that a pilot is able to continuously indentify the take-off surface and maintain directional control.
 Take-off minimums which are relevant to the take-off manoeuvre itself, should not be confused with weather minimums required for flight initiation. Departure weather minimums at an aerodrome should not be less than the applicable minimums for landing at that aerodrome unless a suitable take-off alternate aerodrome is available. The take-off alternate aerodrome should have weather conditions and facilities suitable for landing the aeroplane in normal and non-normal configurations pertinent to the operation.

MMIA/CLQ
COLIMA

JEPPESSEN
27 SEP 24 **13-1** Eff 3 Oct

COLIMA, MEXICO
VOR Z Rwy 07

*MANZANILLO Approach 118.7			*COLIMA Tower 118.9		
VOR COL 117.7	Final Apch Crs 066°	D5.0 3400' (969')	MDA(H) 2960' (529')	Apt Elev 2467' Rwy 2431'	
MISSED APCH: Climb via COL VOR R-071 to D6.0, then turn RIGHT within 8 NM to COL VOR to the minimum holding altitude.					
Alt Set: MB (IN on req)		Rwy Elev: 86 MB	Trans level: FL 195	Trans alt: 18500'	
DME required.					



Gnd speed-Kts	70	90	100	120	140	160	PAPI-L	COL on 117.7 R-071	D6.0
Descent Angle 3.00°	372	478	531	637	743	849			
MAP at D1.0									

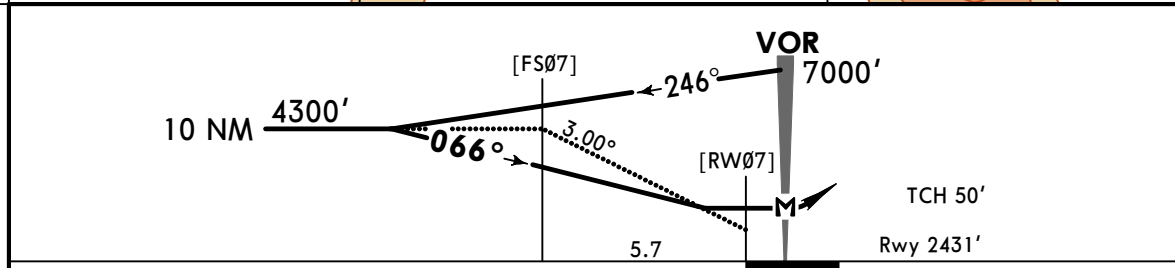
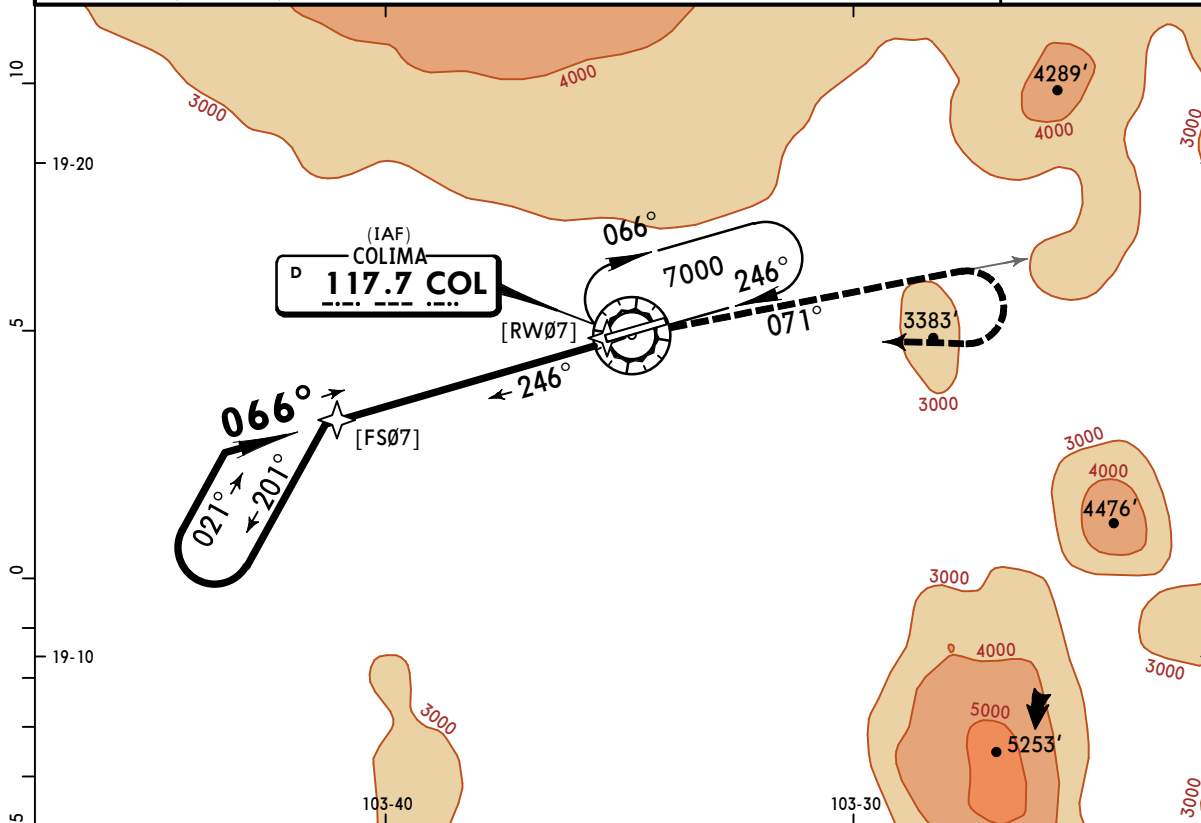
STRAIGHT-IN LANDING RWY 07			CIRCLE-TO-LAND		
MDA(H) 2960' (529')			MDA(H)		
A			Max Kts	90	3060' (593') - 1
B	1		120		
C	1½		140		3120' (653') - 1¾
D	1¾		165		3260' (793') - 2½

MMIA/CLQ
COLIMA

JEPPESEN
27 SEP 24 (13-2) Eff 3 Oct

COLIMA, MEXICO
VOR Y Rwy 07

*MANZANILLO Approach 118.7			*COLIMA Tower 118.9																										
VOR COL 117.7	Final Apch Crs 066°	No FAF	MDA(H) 2960' (529')	Apt Elev 2467'	Rwy 2431'																								
MISSED APCH: Climb via COL VOR R-071, turn RIGHT within 8 NM to COL VOR at the minimum holding altitude.					<p>MSA COL VOR</p>																								
<table border="1"> <thead> <tr> <th colspan="8">MAX TIME TO TURN.</th> </tr> <tr> <th>Gnd speed-Kts</th> <th>80</th> <th>100</th> <th>120</th> <th>140</th> <th>160</th> <th>180</th> <th>200</th> </tr> </thead> <tbody> <tr> <td>6 NM to turn</td> <td>4:51</td> <td>3:36</td> <td>3:00</td> <td>2:34</td> <td>2:15</td> <td>2:00</td> <td>1:48</td> </tr> </tbody> </table>						MAX TIME TO TURN.								Gnd speed-Kts	80	100	120	140	160	180	200	6 NM to turn	4:51	3:36	3:00	2:34	2:15	2:00	1:48
MAX TIME TO TURN.																													
Gnd speed-Kts	80	100	120	140	160	180	200																						
6 NM to turn	4:51	3:36	3:00	2:34	2:15	2:00	1:48																						
Alt Set: MB (IN on req)		Apt Elev: 86 MB	Trans level: FL 195	Trans alt: 18500'																									



Gnd speed-Kts	70	90	100	120	140	160	PAPI-L	COL on 117.7 R-071	
Descent angle	3.00°	372	478	531	637	743			849
MAP at VOR									

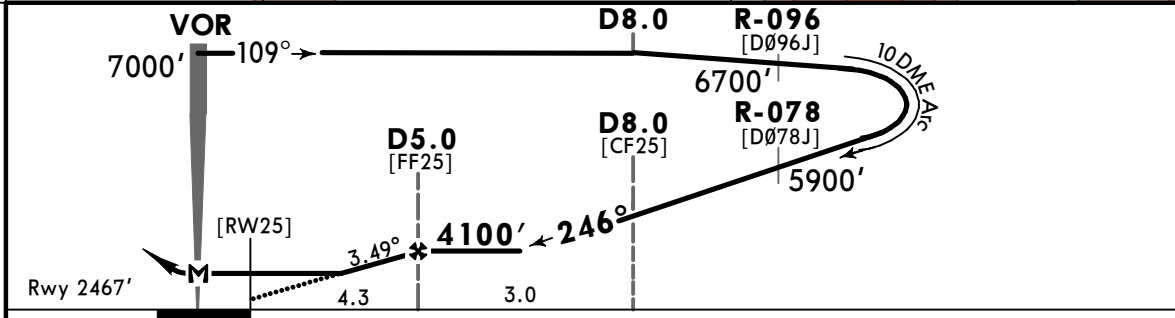
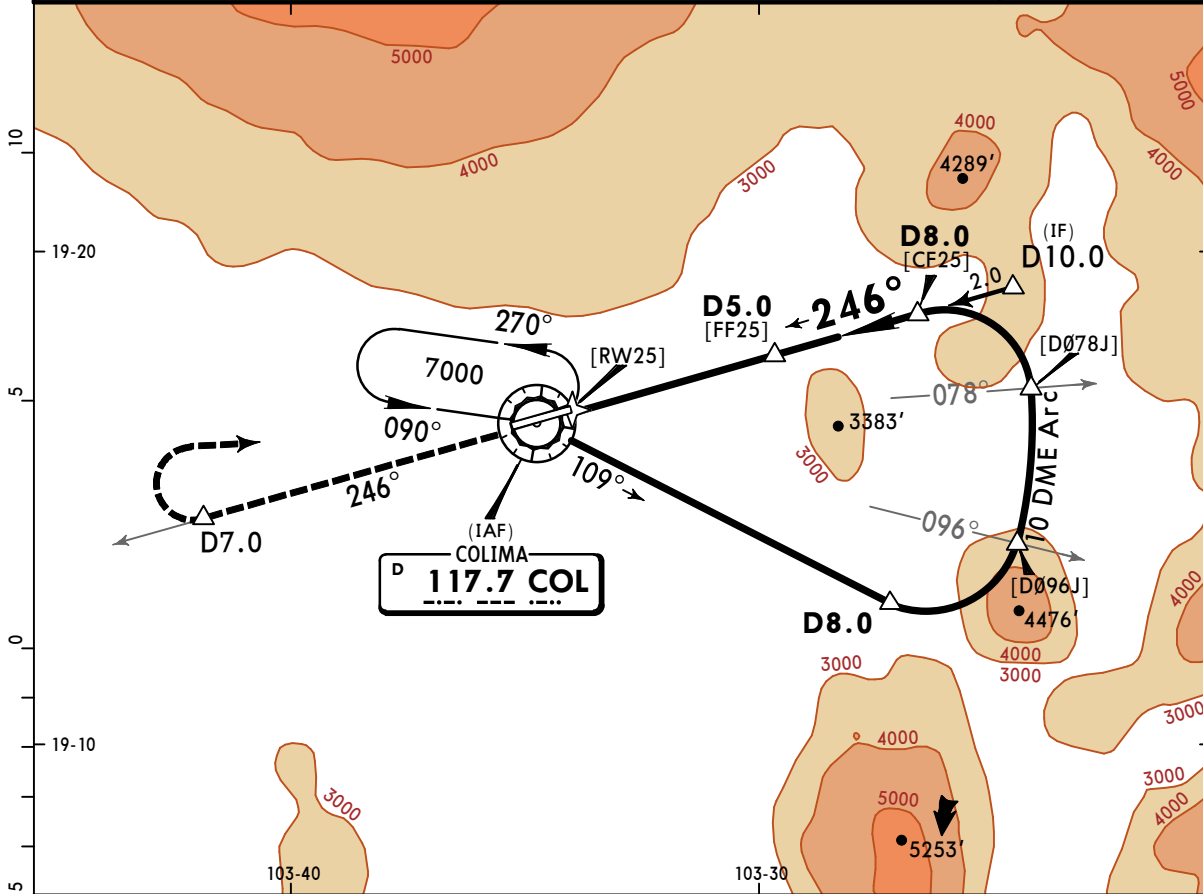
STRAIGHT-IN LANDING RWY 07			CIRCLE-TO-LAND		
MDA(H) 2960' (529')			MDA(H)		
A	1	Max Kts 90	3060' (593') - 1		
B	1	120	3120' (653') - 1 3/4		
C	1 1/2	140	3260' (793') - 2 1/2		
D	1 3/4	165			

MMIA/CLQ
COLIMA

JEPPESSEN
27 SEP 24 **(13-3)** **Eff 3 Oct**

COLIMA, MEXICO
VOR Rwy 25

*MANZANILLO Approach 118.7				*COLIMA Tower 118.9	
VOR COL 117.7	Final Apch Crs 246°	D5.0 4100' (1633')	MDA(H) 3000' (533')	Apt Elev 2467'	Rwy 2467'
MISSED APCH: Climb via COL VOR R-246 to D7.0, then turn RIGHT within 10 NM to COL VOR at the minimum holding altitude.					
Alt Set: MB (IN on req)		Apt Elev: 87 MB	Trans level: FL 195	Trans alt: 18500'	
DME required.					



Gnd speed-Kts	70	90	100	120	140	160			
Descent Angle 3.49°	432	556	618	741	865	988		PAPI-L	COL on 117.7 D7.0
MAP at VOR									R-246

STRAIGHT-IN LANDING RWY 25			CIRCLE-TO-LAND		
MDA(H) 3000' (533')			MDA(H)		
A		1	90	3060' (593') - 1	
B			120		
C		1½	140	3120' (653') - 1¾	
D		1¾	165	3260' (793') - 2½	

CHANGES: Procedure title, note added.