

General Information

Location: MAZATLAN MEX
ICAO/IATA: MMMZ / MZT
Lat/Long: N23° 09.7', W106° 15.9'
Elevation: 38 ft

Airport Use: Public
Daylight Savings: Not Observed
UTC Conversion: +7:00 = UTC
Magnetic Variation: 7.0° E

Fuel Types: 100 Octane (LL), Jet A
Customs: Yes
Airport Type: IFR
Landing Fee: No
Control Tower: Yes
Jet Start Unit: No
LLWS Alert: No
Beacon: Yes

Sunrise: 1241 Z
Sunset: 0139 Z

Runway Information

Runway: 09
Length x Width: 8868 ft x 197 ft
Surface Type: concrete
TDZ-Elev: 20 ft
Lighting: Edge

Runway: 27
Length x Width: 8868 ft x 197 ft
Surface Type: concrete
TDZ-Elev: 38 ft
Lighting: Edge

Communication Information

ATIS: 127.700
Mazatlan Tower: 118.300
Mazatlan Approach: 121.200
Mazatlan Information: 122.300 AFIS

TMA

7 JUL 23

10-1B

MAZATLAN, MEXICO

GEN RAFAEL BUELNA INTL

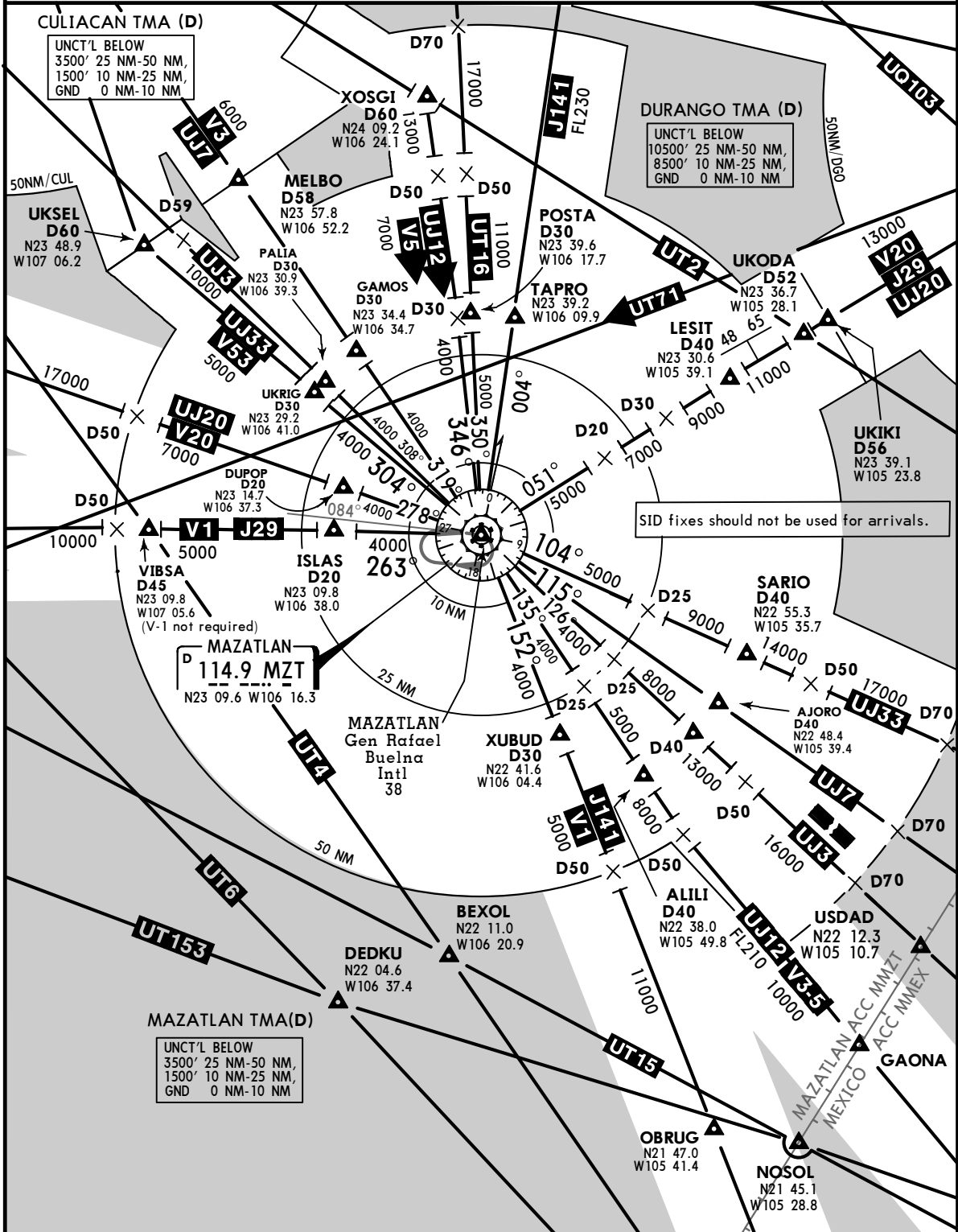


*ATIS 127.7	MAZATLAN Approach 121.2
----------------	----------------------------

SPEED RESTRICTIONS WITHIN MEXICO AIRSPACE

Maximum IAS unless otherwise depicted or authorized by ATC

Below 3000' AGL within 10NM of any airport.....200 KTS
 Below 10000' MSL within Mexico Airspace.....250 KTS
 Below 10000' AGL within 30NM of any airport.....250 KTS
WITHIN MAZATLAN TMA
 At or below 3000' MSL of Gen Rafael Buelna Intl Apt and within 10NM of MZT VORDME.....200 KTS
 At or below 10000' MSL within 30NM of MZT VORDME.....250 KTS
WITHIN CULIACAN TMA
 At or below 3100' MSL of Culiacan Intl airport and within 10 NM of CUL VORDME...200 KTS
 At or below 10100' MSL within 30NM of CUL VORDME.....250 KTS



CHANGES: ATS system.

© JEPPESEN, 2000, 2023. ALL RIGHTS RESERVED.

AJORO 4 (AJORO4) [AJORO4]
ALILI 4 (ALILI4) [ALILI4]
LESIT 3 (LESIT3) [LESIT3]
MAZATLAN 5A (MZT5A) [MZT5A]
POSTA 4A (POSTA4A) [POST4A]
SARIO 4 (SARIO4) [SARIO4]
TAPRO 2A (TAPRO2A) [TAPR2A]
XUBUD 3 (XUBUD3) [XUBUD3]
DEPARTURES (RWY 09)

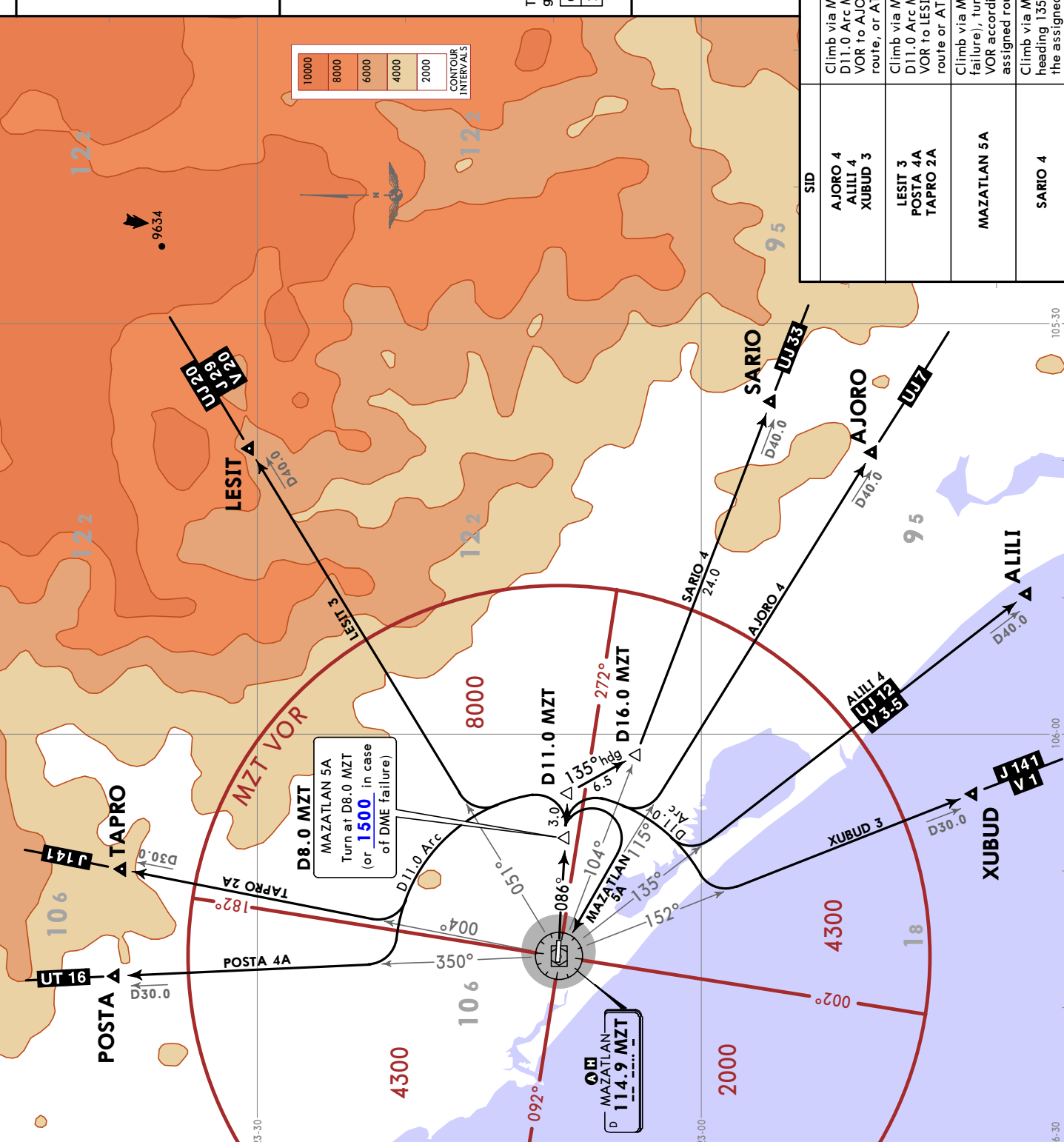
MINIMUM CROSSING ALTITUDE	
ELQ	J-141
DGO	J-29, UJ-20
AGU	UJ-33
GDL	UJ-7
TNY	V-3-5
PVR	UJ-12
SJD	V-1
LAP	J-141
CUL	J-29
LMM	V-20
CUL	UJ-33
BECON	UJ-3
	UJ-7
	UT-16

The LESIT 3 SID requires a minimum climb gradient of 290 per NM (4.77%) until crossing 8500.

Grnd speed-KT	75	100	150	200	250	300
290 per NM	363	483	725	967	1208	1450

HOLDING OVER MZT VOR

SID	INITIAL CLIMB
AJORO 4 ALILI 4 XUBUD 3	Climb via MZT R086 to D8.0 MZT, turn RIGHT and proceed on D11.0 Arc MZT to intercept the corresponding radial from MZT VOR to AJORO, ALILI or XUBUD and continue on the assigned route, or ATC instructions.
LESIT 3 POSTA 4A TAPRO 2A	Climb via MZT R086 to D8.0 MZT, turn LEFT and proceed on D11.0 Arc MZT to intercept the corresponding radial from MZT VOR to LESIT, POSTA or TAPRO and continue on the assigned route or ATC instructions.
MAZATLAN 5A	Climb via MZT R086 to D8.0 MZT (or 1500 in case of DME failure), turn RIGHT within 11 NM to MZT VOR and depart MZT VOR according to the minimum crossing altitude of the assigned route or ATC instructions.
SARIO 4	Climb via MZT R086 to D11.0 MZT, turn RIGHT and proceed on the heading 135° to intercept MZT R104 to SARIO, and continue on the assigned route or ATC instructions.



JEPPESEN
MAZATLAN, MEXICO
SID
 1 OCT 21 **10-3A** **EFF 7 OCT**

Trans alt: 18500
 Apt Elev 38
DUPOP 3 (DUPOP3) [DUPOP3]
GAMOS 4 (GAMOS4) [GAMOS4]
ISLAS 4 (ISLAS4) [ISLAS4]
MAZATLAN 5B (MZT5B) [MZT5B]
PALIA 4 (PALIA4) [PALIA4]
POSTA 4B (POSTA4B) [POST4B]
TAPRO 2B (TAPRO2B) [TAPR2B]
UKRIG 3 (UKRIG3) [UKRIG3]
DEPARTURES (RWY 27)

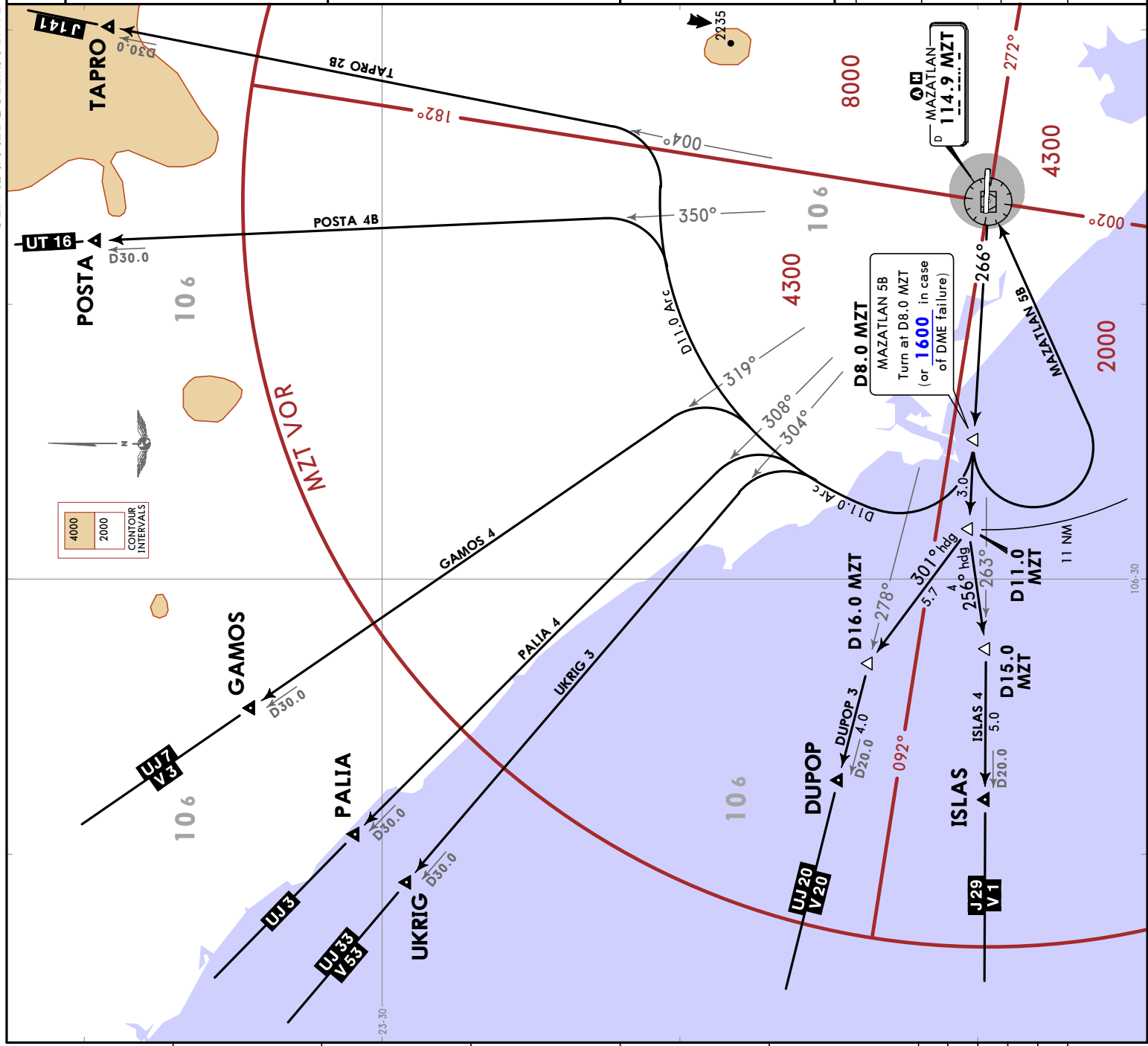
MINIMUM CROSSING ALTITUDE	
ELQ	J-141 5700
DGO	V-20 J-29, UJ-20 7000
AGU	UJ-33 2500
GDL	UJ-7 2000
TNY	V-3-5 UJ-12 3000
PVR	V-1 J-141 2500
SJD	V-1 J-29 2000
LAP	UJ-20 3000
CUL	V-53 UJ-33 3000
LMM	UJ-3 3000
CUL	UJ-7 3000
BECON	UT-16 5000

HOLDING OVER MZT VOR

MHA 4000 266°

SID	INITIAL CLIMB
DUPOP 3	Climb via MZT R266 to D11.0 MZT, turn RIGHT and proceed on heading 301° to intercept MZT R278 to DUPOP and continue on the assigned route or ATC instructions.
GAMOS 4 PALIA 4 POSTA 4B TAPRO 2B UKRIG 3	Climb via MZT R266 to D8.0 MZT, turn RIGHT and proceed on D11.0 Arc MZT and intercept the corresponding radial from MZT VOR to GAMOS, PALIA, POSTA, TAPRO or UKRIG and continue on the assigned route or ATC instructions.
ISLAS 4	Climb via MZT R266 to D11.0 MZT, turn LEFT and proceed on heading 256° to intercept MZT R263 to ISLAS and continue on the assigned route or ATC instructions.
MAZATLAN 5B	Climb via MZT R266 to D8.0 MZT (or 1600 in case of DME failure), turn LEFT within 11 NM to MZT VOR and depart MZT VOR according to the minimum crossing altitude of the assigned route or ATC instructions.

MMMZ/MZT
GEN RAFAEL BUELNA INTL



MMMZ/MZT

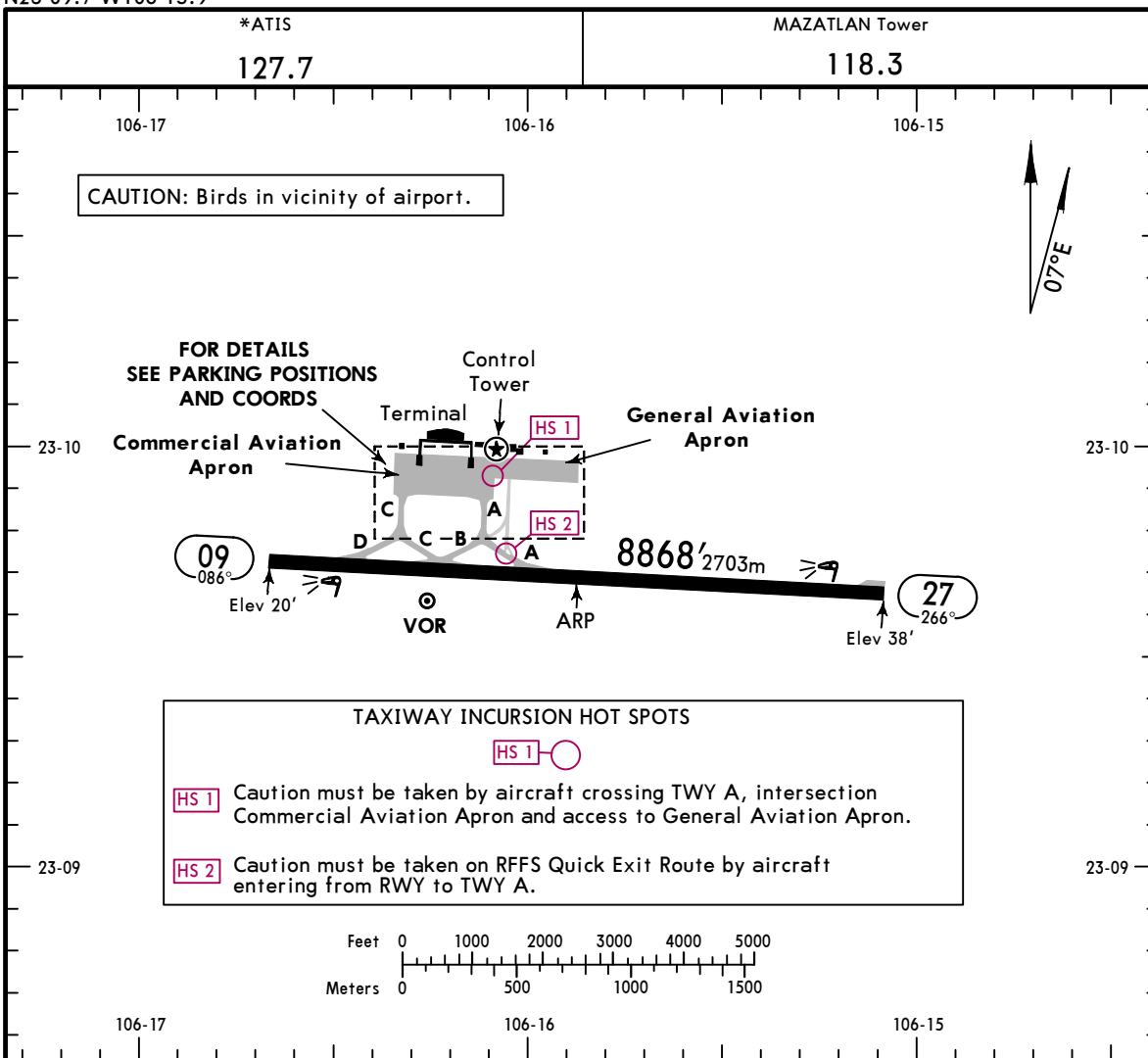
Apt Elev 38'
N23 09.7 W106 15.9

JEPPESEN

18 AUG 23 10-9

MAZATLAN, MEXICO

GEN RAFAEL BUELNA INTL



TAXIWAY INCURSION HOT SPOTS

HS 1

HS 1 Caution must be taken by aircraft crossing TWY A, intersection Commercial Aviation Apron and access to General Aviation Apron.

HS 2

HS 2 Caution must be taken on RFFS Quick Exit Route by aircraft entering from RWY to TWY A.



RWY	HIRL REIL PAPI-L (angle 3.0°)	ADDITIONAL RUNWAY INFORMATION			
		Threshold	USABLE LENGTHS LANDING BEYOND Glide Slope	TAKE-OFF	WIDTH
09 27			7762' 2366m		197' 60m

	TAKE-OFF	FOR FILING AS ALTERNATE	
		Precision	Non-Precision
1 & 2 Eng	All Rwys 400-1	A B C D	800-2
3 & 4 Eng	300-¾	600-2	800-2

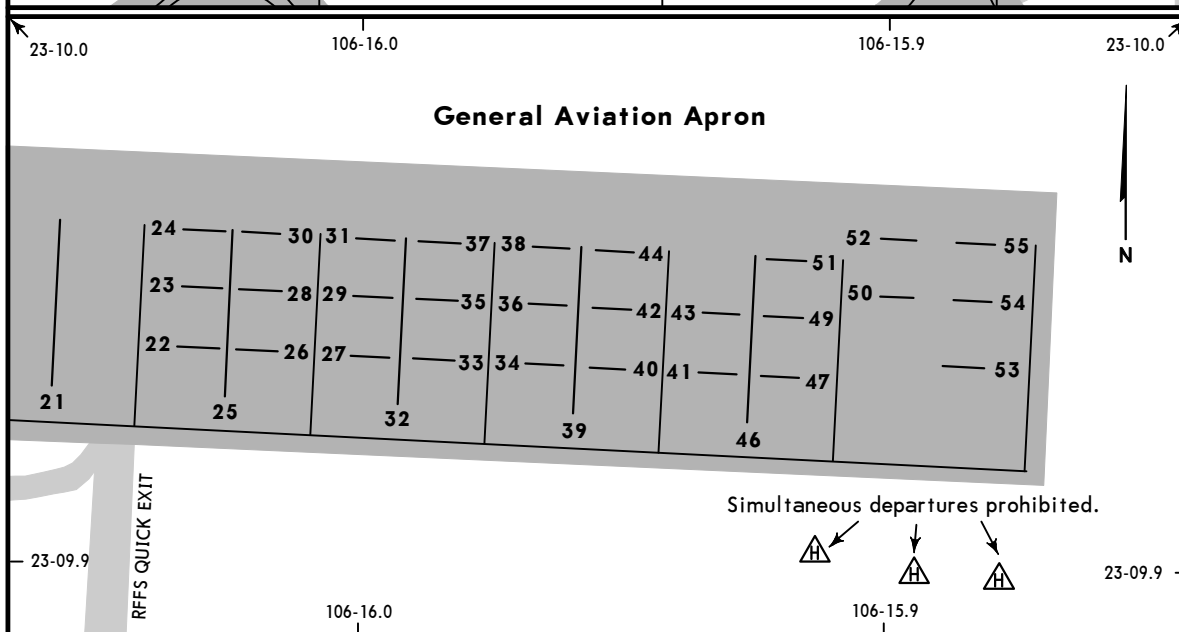
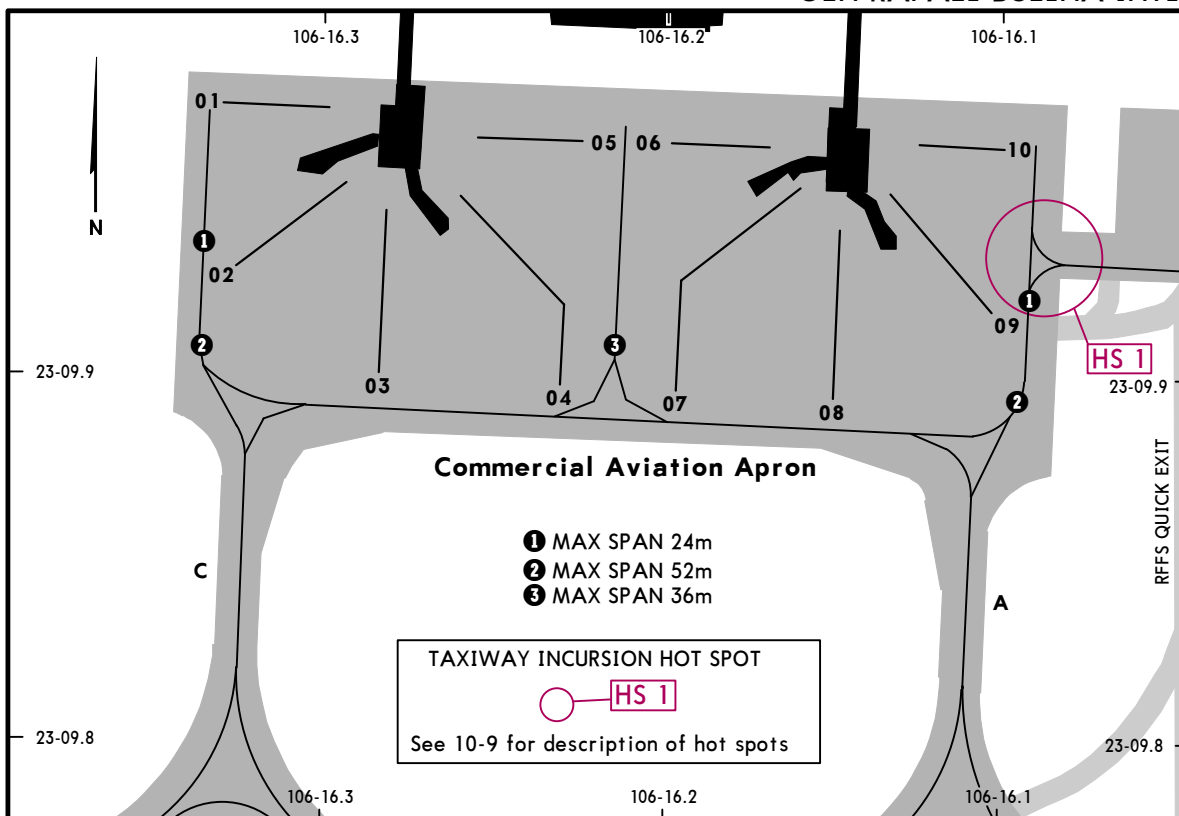
MMMZ/MZT

JEPPESEN

MAZATLAN, MEXICO

18 AUG 23 (10-9A)

GEN RAFAEL BUELNA INTL

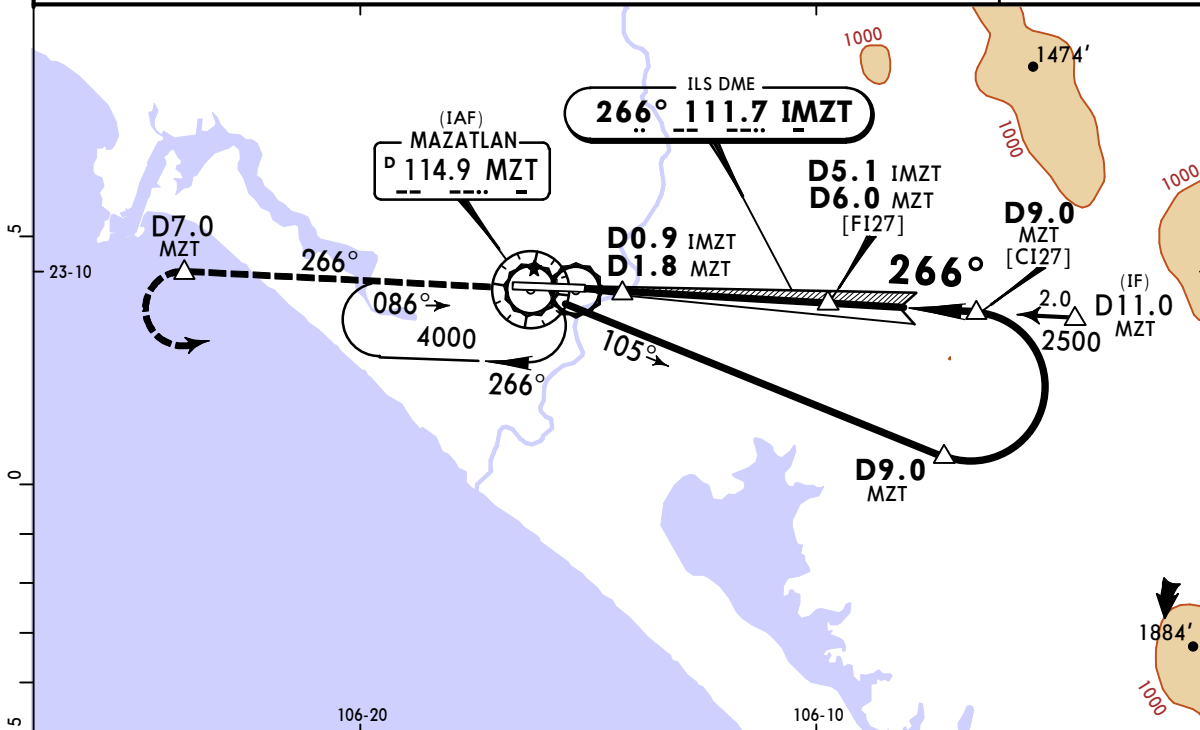


PARKING SPOT COORDINATES

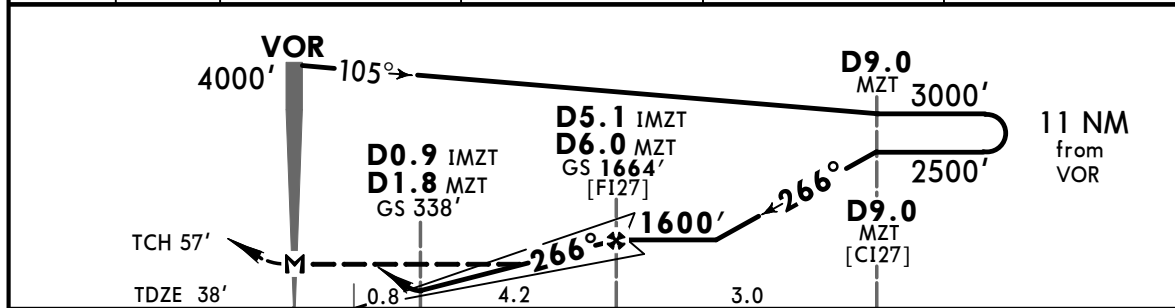
SPOT No.	COORDINATES	SPOT No.	COORDINATES
Commercial Aviation		General Aviation	
01, 02	N23 10.0 W106 16.3	21	N23 10.0 W106 16.1
03, 04	N23 09.9 W106 16.3	22,23	N23 09.9 W106 16.0
05	N23 10.0 W106 16.3	24,25	N23 10.0 W106 16.0
06	N23 10.0 W106 16.2	26 thru 29	N23 09.9 W106 16.0
07	N23 09.9 W106 16.2	30,31	N23 10.0 W106 16.0
08, 09	N23 09.9 W106 16.1	32 thru 36	N23 09.9 W106 16.0
10	N23 10.0 W106 16.1	37,38	N23 10.0 W106 16.0
		39,40,42	N23 09.9 W106 16.0
		41,43	N23 09.9 W106 15.9
		44	N23 10.0 W106 16.0
		51,52,55	N23 10.0 W106 15.9
		46 thru 50	N23 09.9 W106 15.9
		53,54	N23 09.9 W106 15.9

MMMZ/MZT **JEPPESEN** **MAZATLAN, MEXICO**
GEN RAFAEL BUELNA INTL **1 OCT 21** **(11-1)** **ILS DME 1 or LOC Rwy 27**
Eff 7 Oct

*ATIS 127.7		MAZATLAN Approach 121.2		MAZATLAN Tower 118.3	
LOC IMZT 111.7	Final Apch Crs 266°	D5.1 IMZT D6.0 MZT 1664' (1626')	ILS DA(H) 338' (300')	Apt Elev 38'	TDZE 38'
MISSED APCH: Climb outbound on MZT VOR R-266 to D7.0 MZT, then turn LEFT within 10 NM to MZT VOR at the minimum holding altitude.					
Alt Set: IN (MB on req)		Trans level: FL 195		Trans alt: 18500'	
ILS DME usable with DME equipped aircraft with accurate instrument reading within 0.2 NM.					



LOC (GS out)	IMZT DME	2.0	3.0	4.0	5.1
	ALTITUDE	614'	932'	1250'	1600'



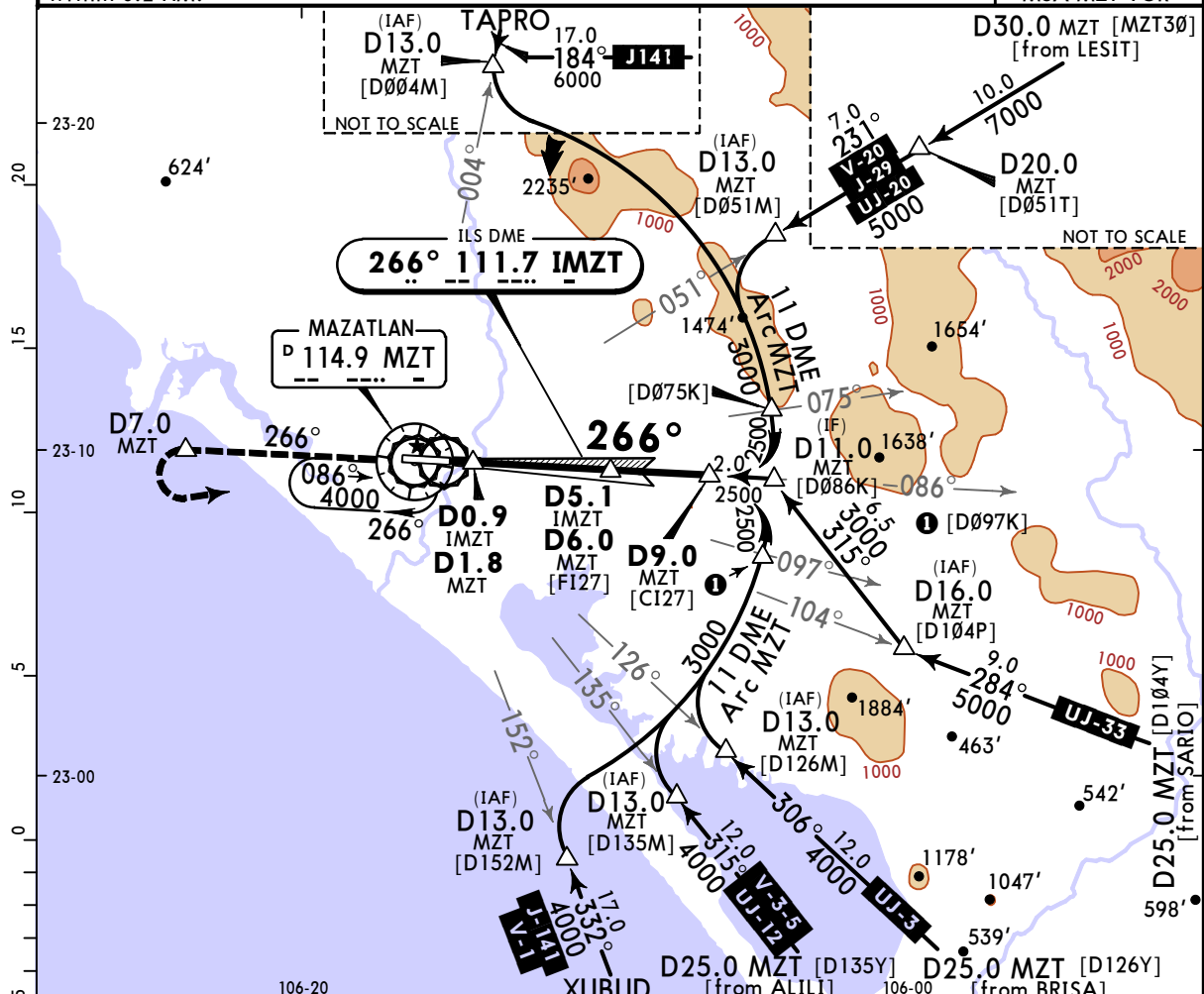
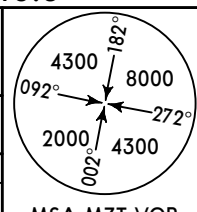
Gnd speed-Kts	70	90	100	120	140	160	REIL PAPI-L	↑ on MZT 114.9 R-266	D7.0 MZT	
GS	3.00°	372	478	531	637	743				849
MAP at VOR										
FAF to Threshold	5.0	4:17	3:20	3:00	2:30	2:09	1:53			

STRAIGHT-IN LANDING RWY 27				CIRCLE-TO-LAND			
ILS DA(H) 338' (300')		LOC (GS out) MDA(H) 380' (342')		Max Kts		MDA(H)	
A				90	600' (562') - 1		
B				120	640' (602') - 1 3/4		
C	3/4		1	140	640' (602') - 2		
D			1 1/4	165	640' (602') - 2		

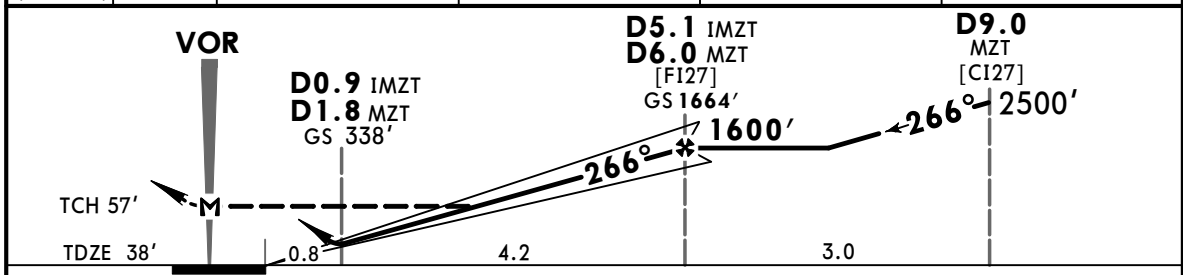
MMMZ/MZT MAZATLAN, MEXICO

GEN RAFAEL BUELNA INTL **11-2** ILS DME 2 or LOC Rwy 27

*ATIS 127.7		MAZATLAN Approach 121.2		MAZATLAN Tower 118.3	
LOC IMZT 111.7	Final Apch Crs 266°	D5.1 IMZT D6.0 MZT 1664' (1626')	ILS DA(H) 338' (300')	Apt Elev 38' TDZE 38'	
MISSED APCH: Climb outbound on MZT VOR R-266 to D7.0 MZT, then turn LEFT within 10 NM to MZT VOR at the minimum holding altitude.					
Alt Set: IN (MB on req)		Trans level: FL 195		Trans alt: 18500'	
ILS DME usable with DME equipped aircraft with accurate instrument reading within 0.2 NM.					



LOC (GS out)	IMZT DME	2.0	3.0	4.0	5.1
	ALTITUDE	614'	932'	1250'	1600'



Gnd speed-Kts	70	90	100	120	140	160	REIL PAPI-L	MZT 114.9 R-266	D7.0 MZT
GS 3.00°	372	478	531	637	743	849			
MAP at VOR									
FAF to Threshold	5.0	4:17	3:20	3:00	2:30	2:09	1:53		

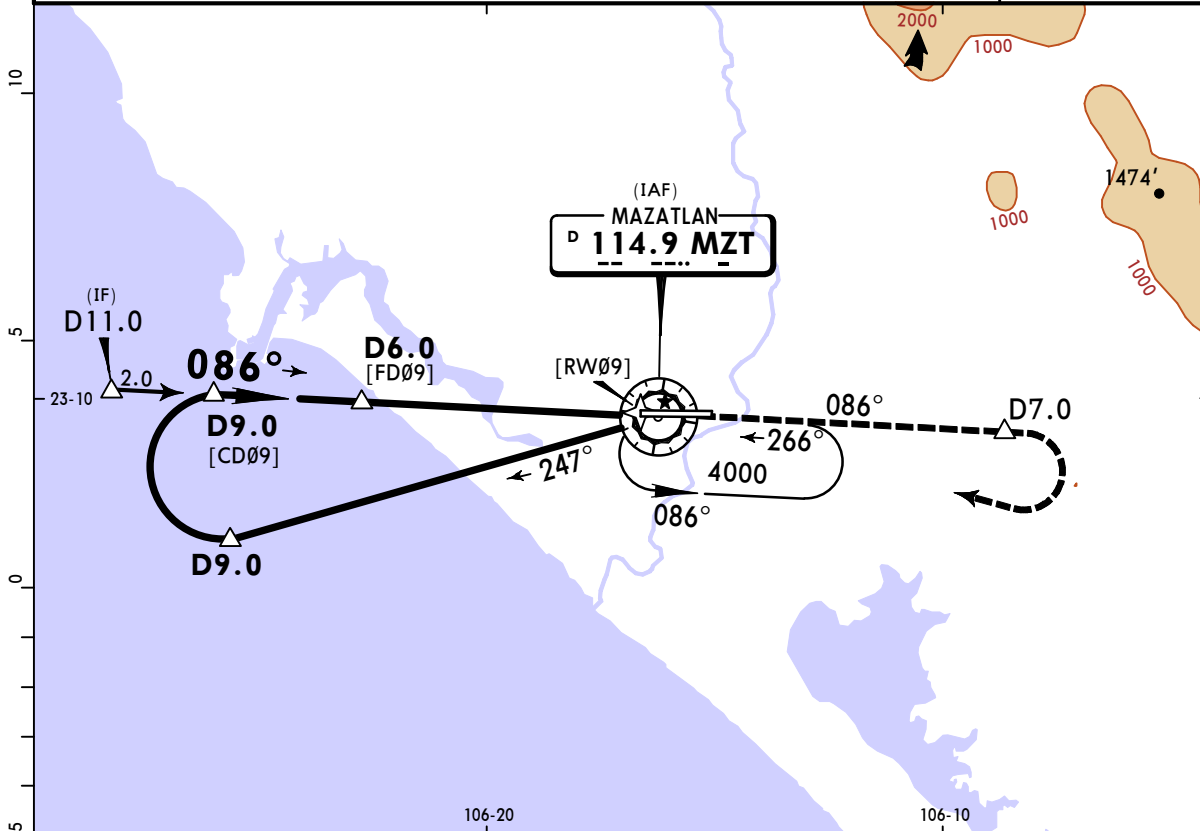
STRAIGHT-IN LANDING RWY 27			CIRCLE-TO-LAND		
ILS DA(H) 338' (300')		LOC (GS out) MDA(H) 380' (342')		Max Kts	MDA(H)
A				90	600' (562') - 1
B				120	640' (602') - 1
C	3/4			140	640' (602') - 1 3/4
D			1 1/4	165	640' (602') - 2

MMMZ/MZT
GEN RAFAEL BUELNA INTL

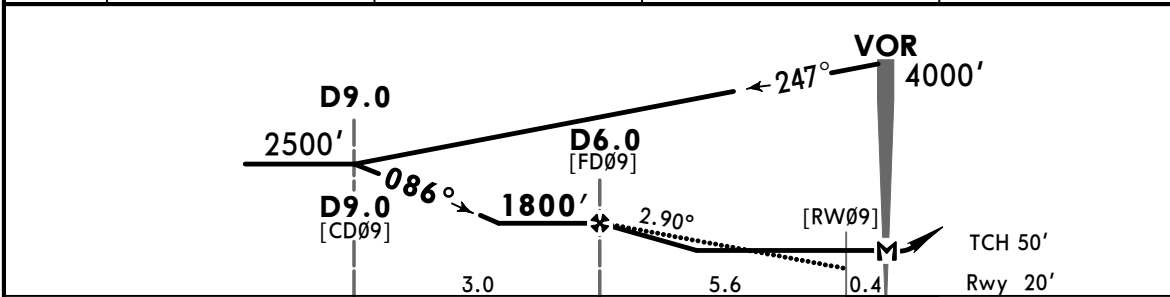
JEPPESSEN
 1 OCT 21 **13-1** **Eff 7 Oct**

MAZATLAN, MEXICO
VOR DME 1 Rwy 09

*ATIS 127.7		MAZATLAN Approach 121.2		MAZATLAN Tower 118.3	
VOR MZT 114.9	Final Apch Crs 086°	D6.0 1800' (1780')	MDA(H) 540' (520')	Apt Elev 38' Rwy 20'	
MISSED APCH: Climb outbound on MZT VOR R-086 to D7.0, then turn RIGHT within 10 NM to MZT VOR at the minimum holding altitude.					
Alt Set: IN (MB on req)		Trans level: FL 195		Trans alt: 18500'	
					MSA MZT VOR



MZT DME	6.0	5.0	4.0	3.0
ALTITUDE	1800'	1490'	1180'	880'



Gnd speed-Kts	70	90	100	120	140	160	REIL PAPI-L	MZT on 114.9 to D7.0 R-086
Descent Angle 2.90°	359	462	513	616	718	821		
MAP at VOR								
FAF to Threshold	5.6	4:48	3:44	3:22	2:48	2:24	2:06	

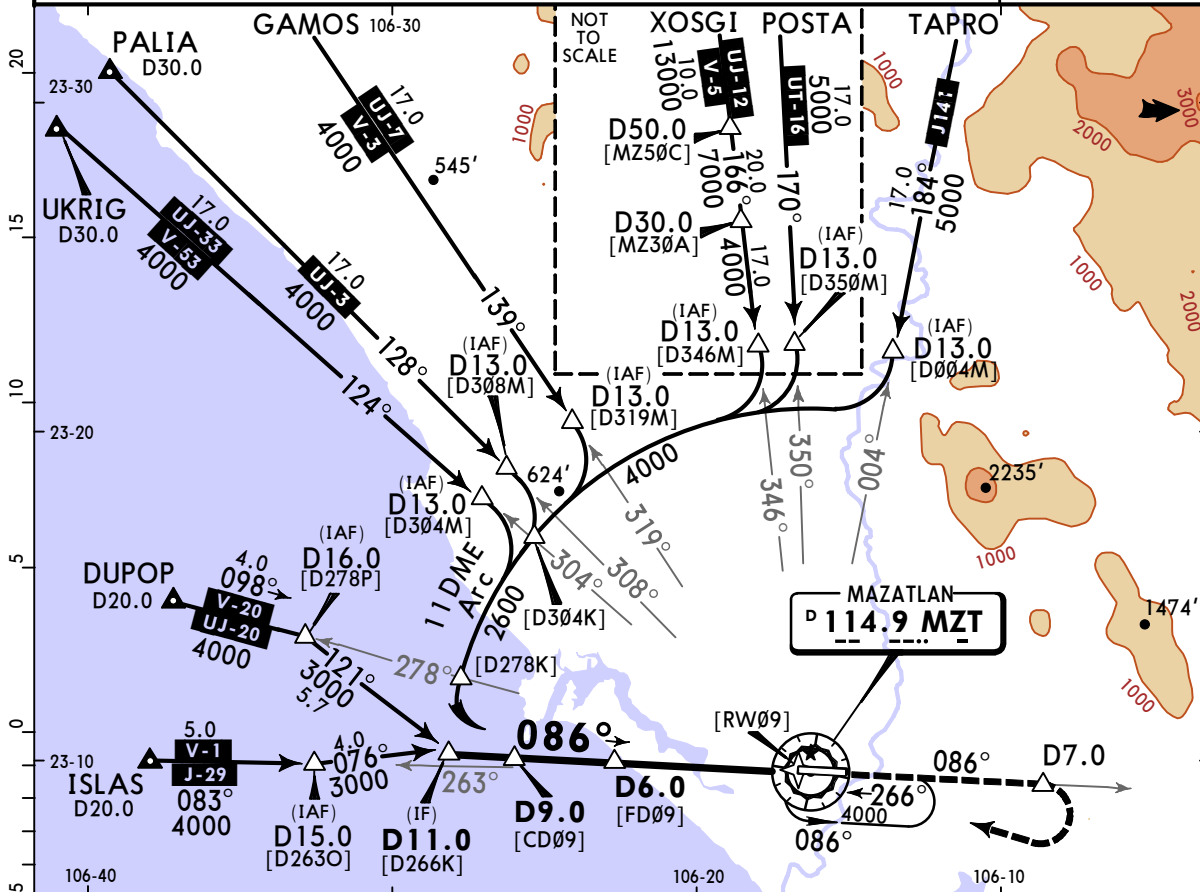
STRAIGHT-IN LANDING RWY 09			CIRCLE-TO-LAND		
MDA(H) 540' (520')			MDA(H)		
A	1		Max Kts		
B	1		90	600' (562') - 1	
C	1½		140	640' (602') - 1¾	
D	1¾		165	640' (602') - 2	

MMMZ/MZT
GEN RAFAEL BUELNA INTL

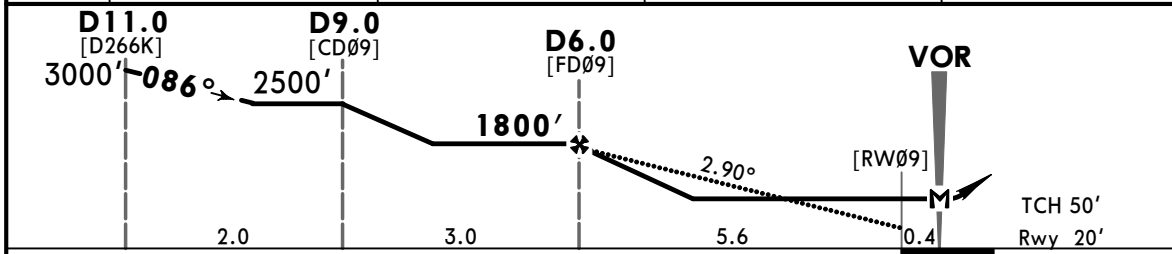
JEPESEN
 1 OCT 21 **13-2** Eff 7 Oct

MAZATLAN, MEXICO
VOR DME 2 Rwy 09

*ATIS 127.7		MAZATLAN Approach 121.2		MAZATLAN Tower 118.3	
VOR MZT 114.9	Final Apch Crs 086°	D6.0 1800' (1780')	MDA(H) 540' (520')	Apt Elev 38'	Rwy 20'
MISSED APCH: Climb outbound on MZT VOR R-086 to D7.0, then turn RIGHT within 10 NM to MZT VOR at the minimum holding altitude.					
Alt Set: IN (MB on req)		Trans level: FL 195		Trans alt: 18500'	
In case of DME failure at any point during the procedure, maintain last altitude and proceed to the station in accordance with ATC instructions.					



MZT DME	6.0	5.0	4.0	3.0
ALTITUDE	1800'	1490'	1180'	880'



Gnd speed-Kts	70	90	100	120	140	160	REIL PAPI-L	MZT on 114.9 to D7.0 R-086
Descent Angle 2.90°	359	462	513	616	718	821		
MAP at VOR								
FAF to Threshold	5.6	4:48	3:44	3:22	2:48	2:24		

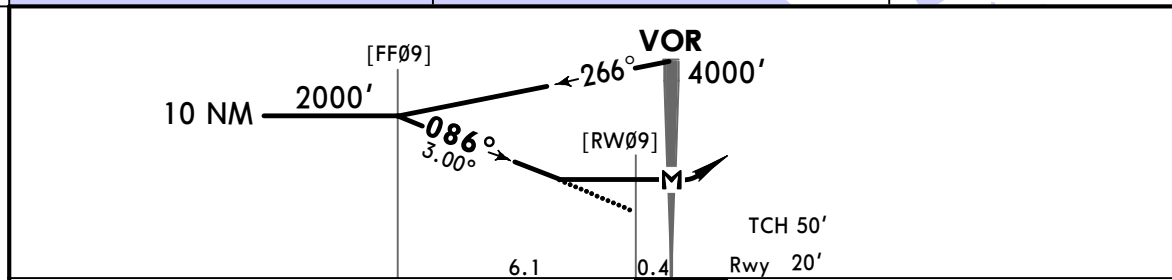
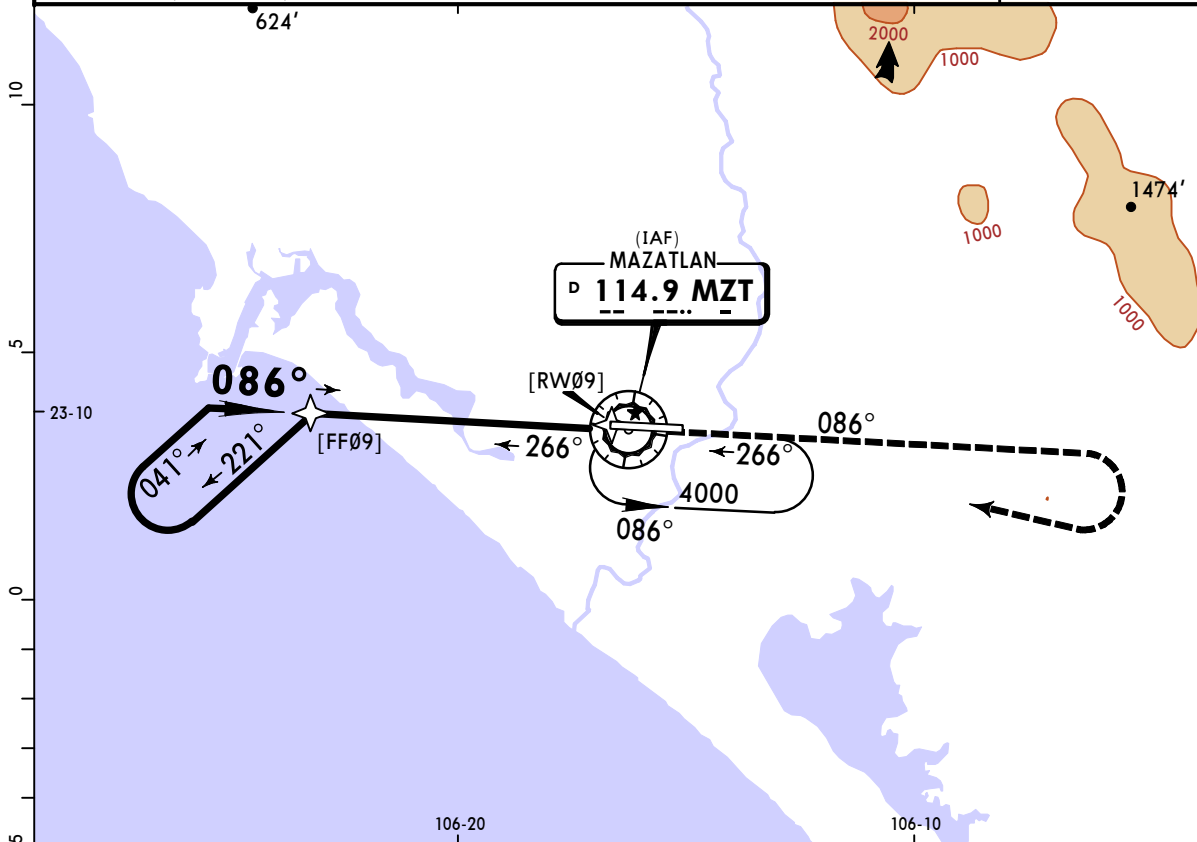
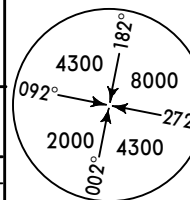
STRAIGHT-IN LANDING RWY 09			CIRCLE-TO-LAND		
MDA(H) 540' (520')			MDA(H)		
A		1	Max Kts		
B		1 1/2	90	600' (562')	-1
C		1 3/4	120	640' (602')	-1 3/4
D		2	140	640' (602')	-2

MMMZ/MZT
GEN RAFAEL BUELNA INTL

JEPPESSEN
 1 OCT 21 **(13-3)** Eff 7 Oct

MAZATLAN, MEXICO
VOR Rwy 09

*ATIS 127.7		MAZATLAN Approach 121.2			MAZATLAN Tower 118.3	
VOR MZT 114.9	Final Apch Crs 086°	No FAF	MDA(H) 860' (840')	Apt Elev 38'	Rwy 20'	
MISSED APCH: Climb outbound on MZT VOR R-086, then turn RIGHT within 10 NM to MZT VOR at the minimum holding altitude.						
MISSED APCH: Max Distance Outbound Track 7 NM						
Gnd speed-Kts	80	100	120	140	160	180 200
Time	5:15	4:12	3:30	3:00	2:38	2:20 2:06
Alt Set: IN (MB on req)		Trans level: FL 195			Trans alt: 18500'	



Gnd speed-Kts	70	90	100	120	140	160	REIL PAPI-L	↑ on 114.9 R-086	RT within 10 NM	MZT 114.9
Descent Angle 3.00°	372	478	531	637	743	849				
MAP at VOR										

STRAIGHT-IN LANDING RWY 09			CIRCLE-TO-LAND		
MDA(H) 860' (840')			Max Kts	MDA(H)	
A	1		90	860' (822') - 1	
B	1¼		120	860' (822') - 1¼	
C	2½		140	860' (822') - 2½	
D	2¾		165	860' (822') - 2¾	

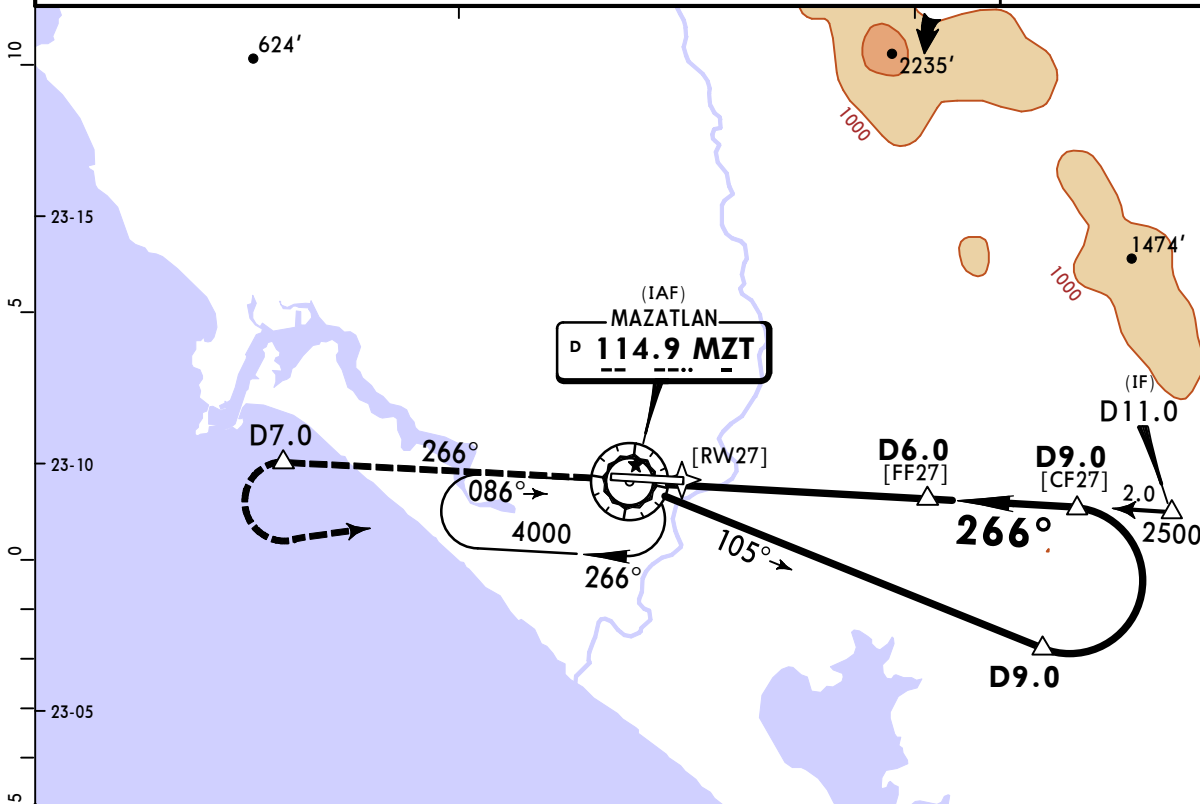
CHANGES: Runway ident, altimeter, CNFs.

MMMZ/MZT
GEN RAFAEL BUELNA INTL

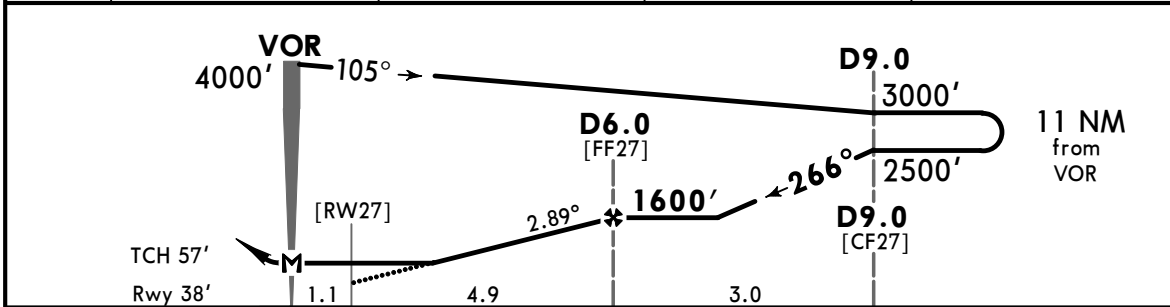
JEPPESEN
1 OCT 21 (13-4) Eff 7 Oct

MAZATLAN, MEXICO
VOR DME 1 Rwy 27

*ATIS 127.7		MAZATLAN Approach 121.2		MAZATLAN Tower 118.3	
VOR MZT 114.9	Final Apch Crs 266°	D6.0 1600' (1562')	MDA(H) 500' (462')	Apt Elev 38' Rwy 38'	
MISSED APCH: Climb outbound on MZT VOR R-266 to D7.0, then turn LEFT within 10 NM to MZT VOR at the minimum holding altitude.					
Alt Set: IN (MB on req)		Trans level: FL 195		Trans alt: 18500'	



MZT DME	3.0	4.0	5.0	6.0
ALTITUDE	680'	990'	1290'	1600'



Gnd speed-Kts	70	90	100	120	140	160	REIL PAPI-L	MZT on 114.9 to D7.0 R- 266
Descent Angle 2.89°	358	460	511	613	716	818		
MAP at VOR								
FAF to Threshold	4.9	4:12	3:16	2:56	2:27	2:06	1:50	

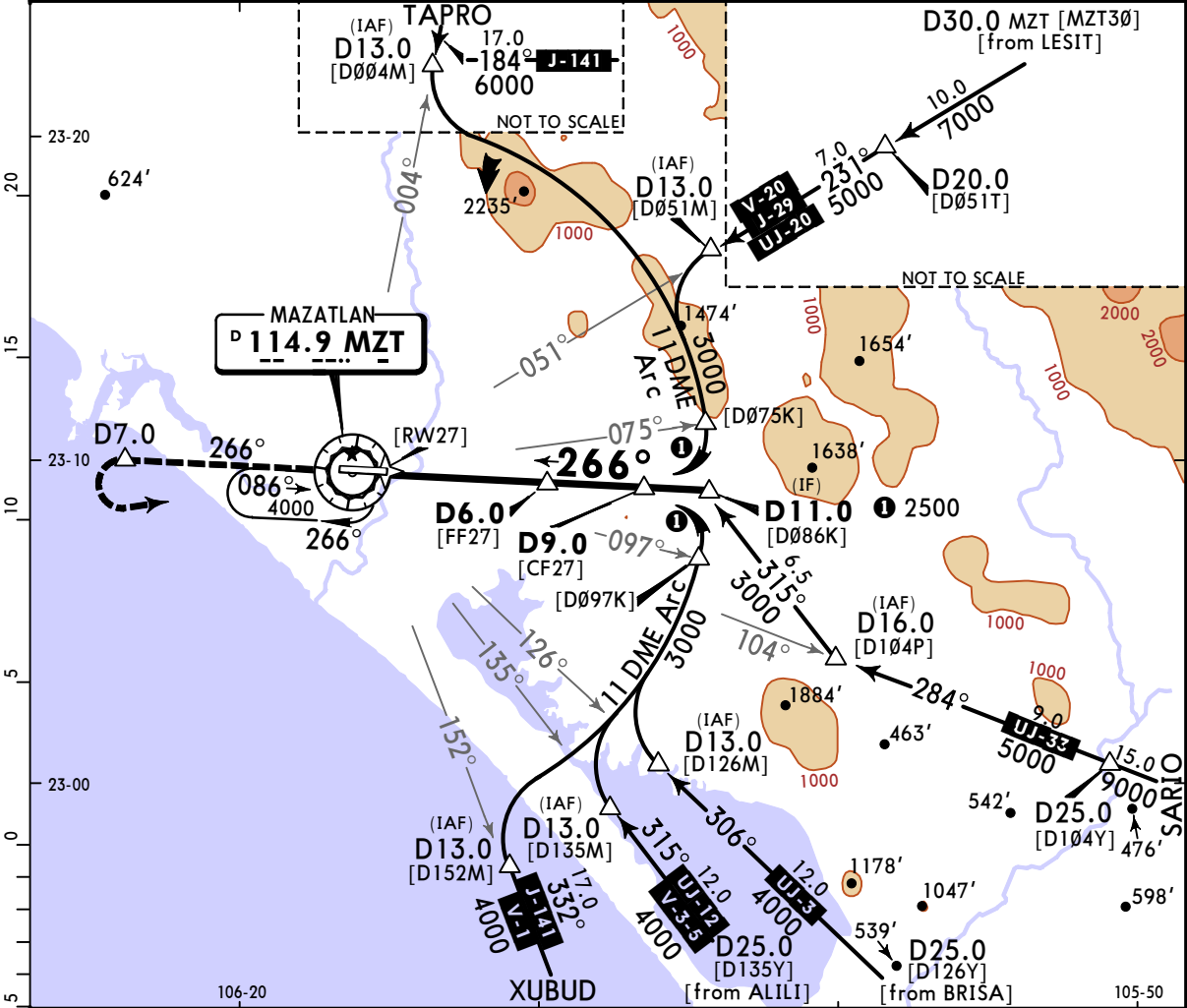
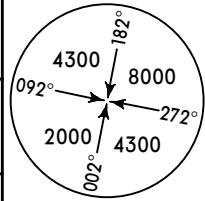
STRAIGHT-IN LANDING RWY 27				CIRCLE-TO-LAND			
MDA(H) 500' (462')				MDA(H) _____			
A	1			Max Kts	90		
B					600' (562') - 1		
C	1 1/4				640' (602') - 1 3/4		
D	1 1/2				640' (602') - 2		

MMMZ/MZT
GEN RAFAEL BUELNA INTL

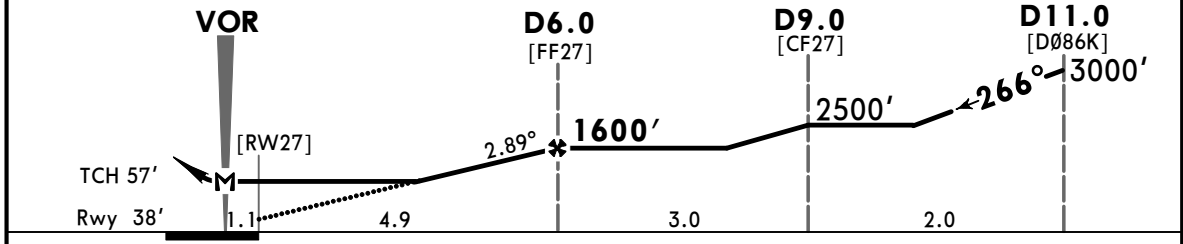
JEPPESSEN
 1 OCT 21 **(13-5) Eff 7 Oct**

MAZATLAN, MEXICO
VOR DME 2 Rwy 27

*ATIS 127.7		MAZATLAN Approach 121.2		MAZATLAN Tower 118.3	
VOR MZT 114.9	Final Apch Crs 266°	D6.0 1600' (1562')	MDA(H) 500' (462')	Apt Elev 38'	Rwy 38'
MISSED APCH: Climb outbound on MZT VOR R-266 to D7.0, then turn LEFT within 10 NM to MZT VOR at the minimum holding altitude.					
Alt Set: IN (MB on req)		Trans level: FL 195		Trans alt: 18500'	
In case of DME failure at any point during the procedure, maintain last altitude and proceed to the station in accordance with ATC instructions.					
					MSA MZT VOR



MZT DME	3.0	4.0	5.0	6.0
ALTITUDE	680'	990'	1290'	1600'



Gnd speed-Kts	70	90	100	120	140	160	REIL PAPI-L	↑ on 114.9 to D7.0 R-266
Descent Angle 2.89°	358	460	511	613	716	818		
MAP at VOR								
FAF to Threshold	4.9	4:12	3:16	2:56	2:27	2:06	1:50	

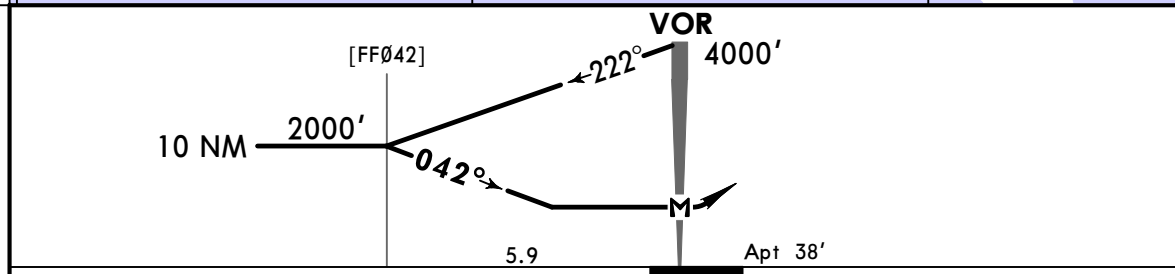
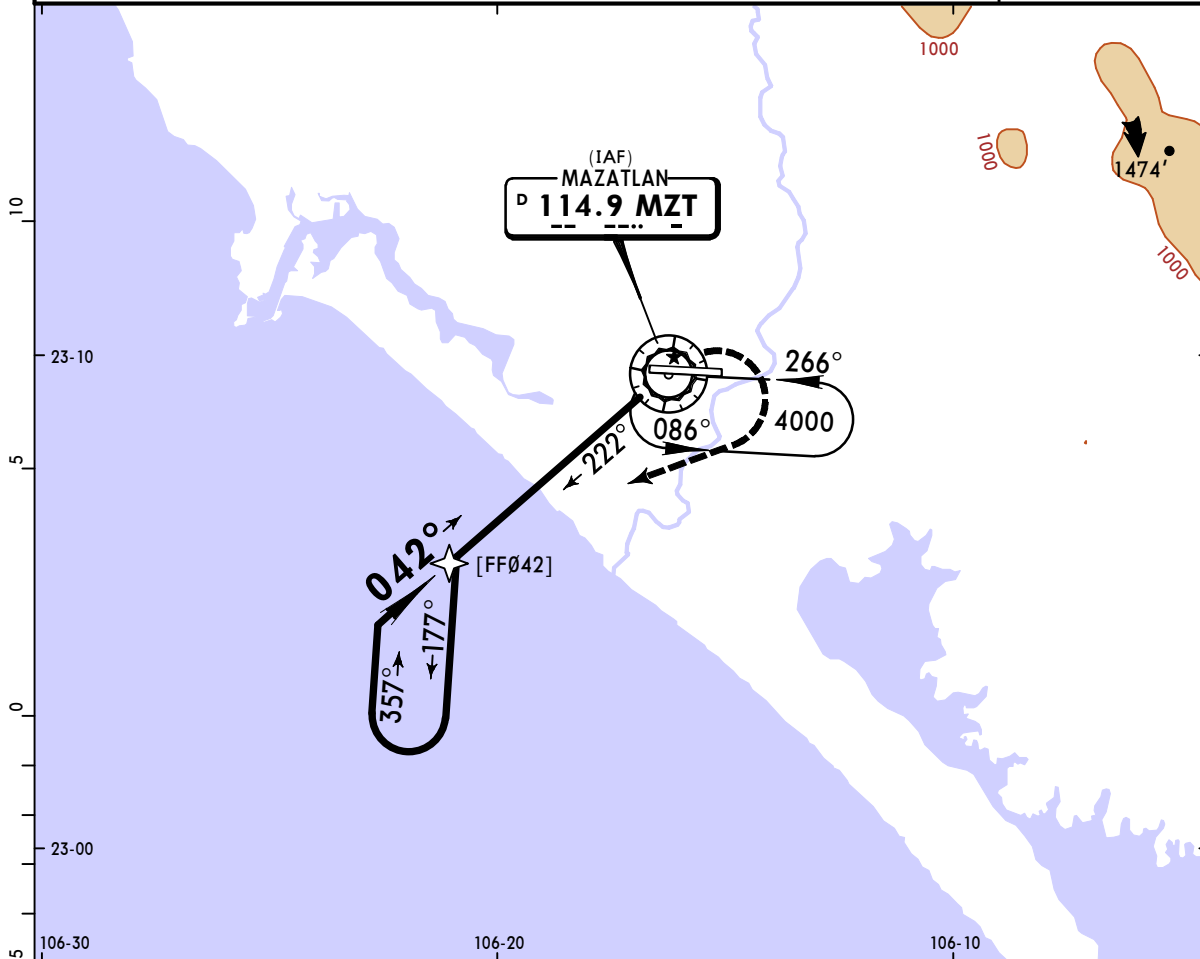
STRAIGHT-IN LANDING RWY 27			CIRCLE-TO-LAND		
MDA(H) 500' (462')			Max Kts	MDA(H)	
A	1		90	600' (562') - 1	
B	1 1/4		120	640' (602') - 1 3/4	
C	1 1/2		140	640' (602') - 2	
D			165		

MMMZ/MZT
GEN RAFAEL BUELNA INTL

JEPPESEN
1 OCT 21 (13-6) Eff 7 Oct

MAZATLAN, MEXICO
VOR-A

*ATIS 127.7		MAZATLAN Approach 121.2		MAZATLAN Tower 118.3	
VOR MZT 114.9	Final Apch Crs 042°	No FAF	MDA(H) Refer to Minimums	Apt Elev 38'	
MISSED APCH: Climbing RIGHT turn to intercept outbound MZT VOR R-222 and proceed on the approach track to the minimum holding altitude.					
Alt Set: IN (MB on req)		Trans level: FL 195		Trans alt: 18500'	



MAP at VOR							Lighting - Refer to Airport Chart	RT	MZT 114.9 R-222
------------	--	--	--	--	--	--	--	----	-------------------------------------

		CIRCLE-TO-LAND
Max Kts		MDA(H)
A 90		640' (602') -1
B 120		640' (602') -1 3/4
C 140		640' (602') -2
D 165		640' (602') -2