

General Information

Location: PUERTO PENASCO MEX
ICAO/IATA: MMPE / PPE
Lat/Long: N31° 21.1', W113° 18.3'
Elevation: 88 ft

Airport Use: Public
Daylight Savings: Not Observed
UTC Conversion: +7:00 = UTC
Magnetic Variation: 12.0° E
Sectional Chart: Phoenix

Fuel Types: 100-130 Octane, Jet A
Customs: Yes
Airport Type: IFR
Landing Fee: No
Control Tower: Yes
Jet Start Unit: No
LLWS Alert: No
Beacon: No

Sunrise: 1411 Z
Sunset: 0031 Z

Runway Information

Runway: 18
Length x Width: 8202 ft x 148 ft
Surface Type: concrete
TDZ-Elev: 88 ft
Lighting: Edge, REIL

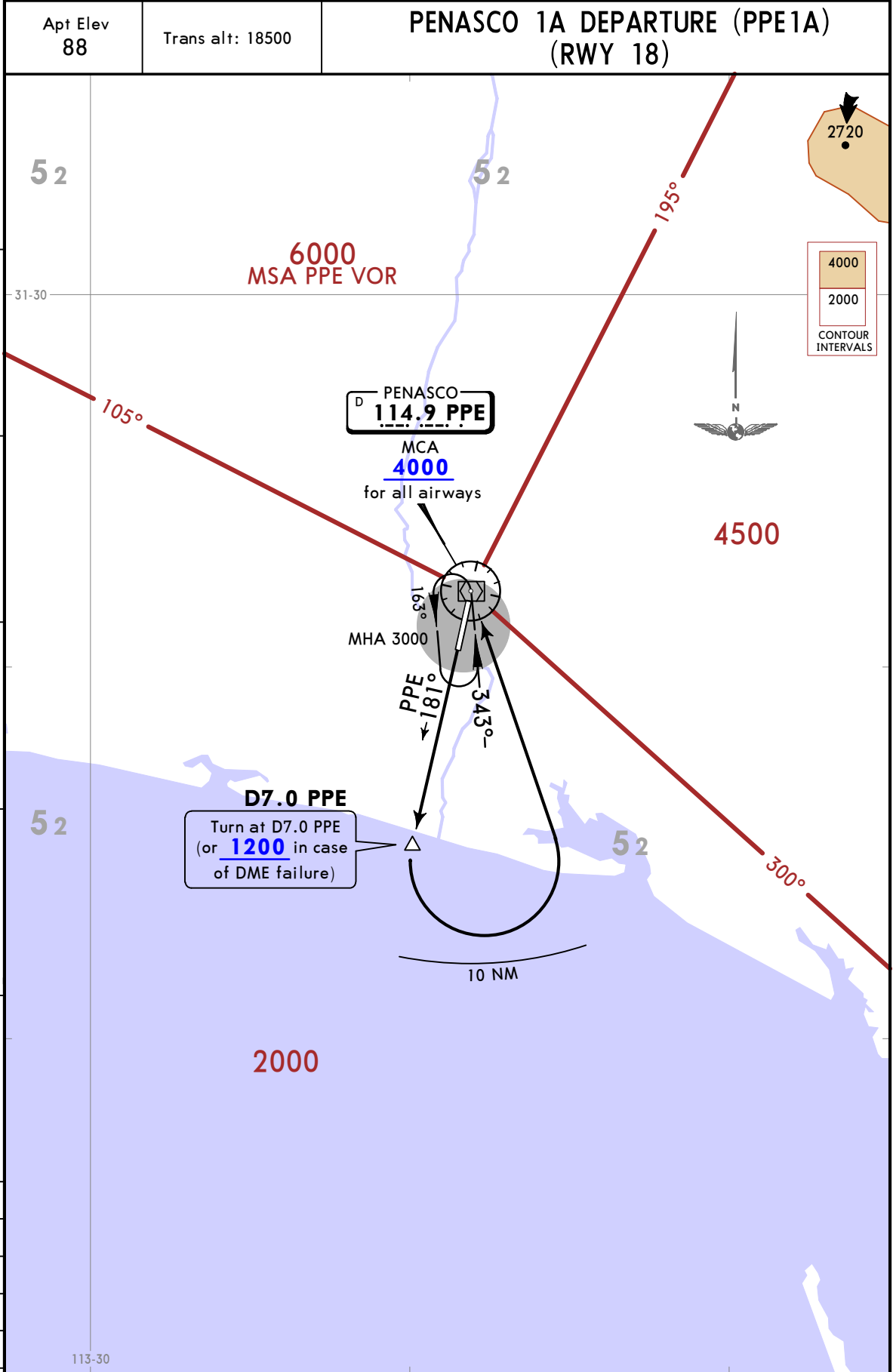
Runway: 36
Length x Width: 8202 ft x 148 ft
Surface Type: concrete
TDZ-Elev: 88 ft
Lighting: Edge, REIL

Communication Information

Penasco Tower: 118.850
Cortes Radio: 122.800 AFIS

MMPE/PPE
MAR DE CORTES INTL

JEPPESEN PUERTO PENASCO, MEXICO
4 FEB 22 (10-3) **SID**



INITIAL CLIMB

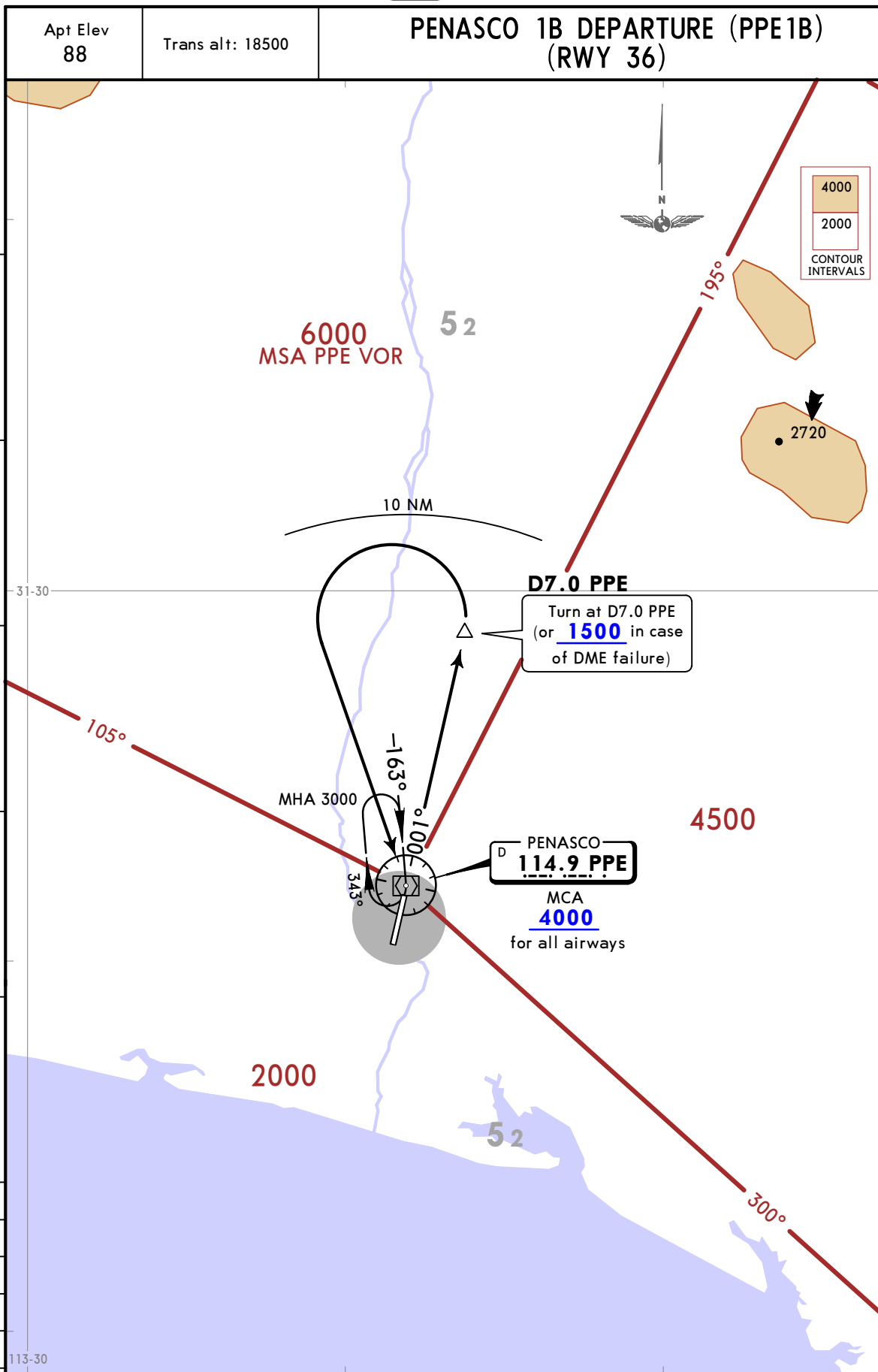
Climb via PPE R181 to D7.0 PPE (or 1200 in case of DME failure), then turn LEFT within 10 NM to PPE VOR. Cross PPE VOR at the MCA for the assigned route or according to ATC instructions.

MMPE/PPE
MAR DE CORTES INTL

JEPPESEN
4 FEB 22 (10-3A)

PUERTO PENASCO, MEXICO

SID



INITIAL CLIMB
Climb via PPE R001 to D7.0 PPE (or 1500 in case of DME failure), then turn LEFT within 10 NM to PPE VOR. Cross PPE VOR at the MCA for the assigned route or according to ATC instructions.

MMPE/PPE

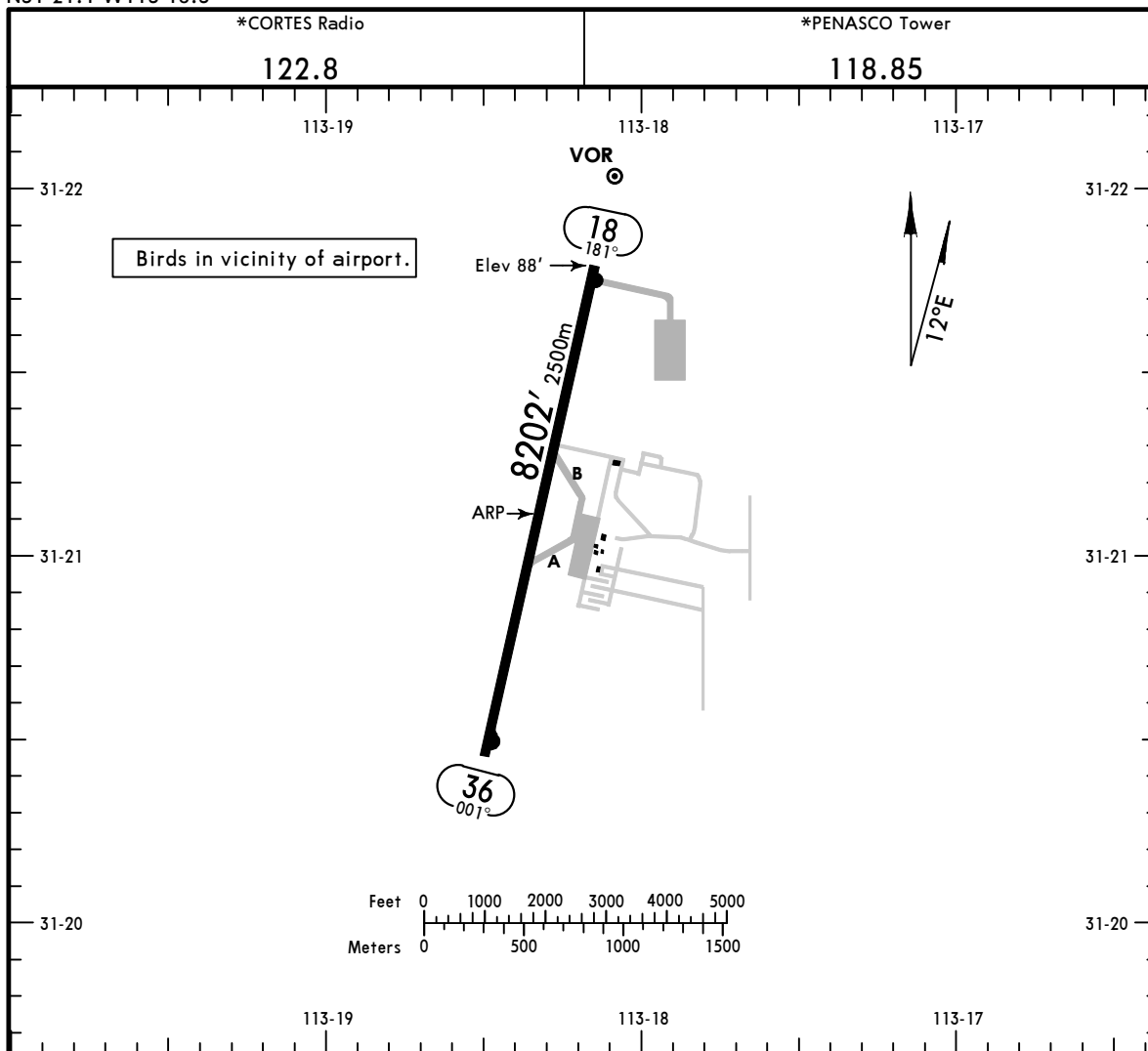
Apt Elev **88'**
N31 21.1 W113 18.3



21 JUN 24 (10-9)

PUERTO PENASCO, MEXICO

MAR DE CORTES INTL



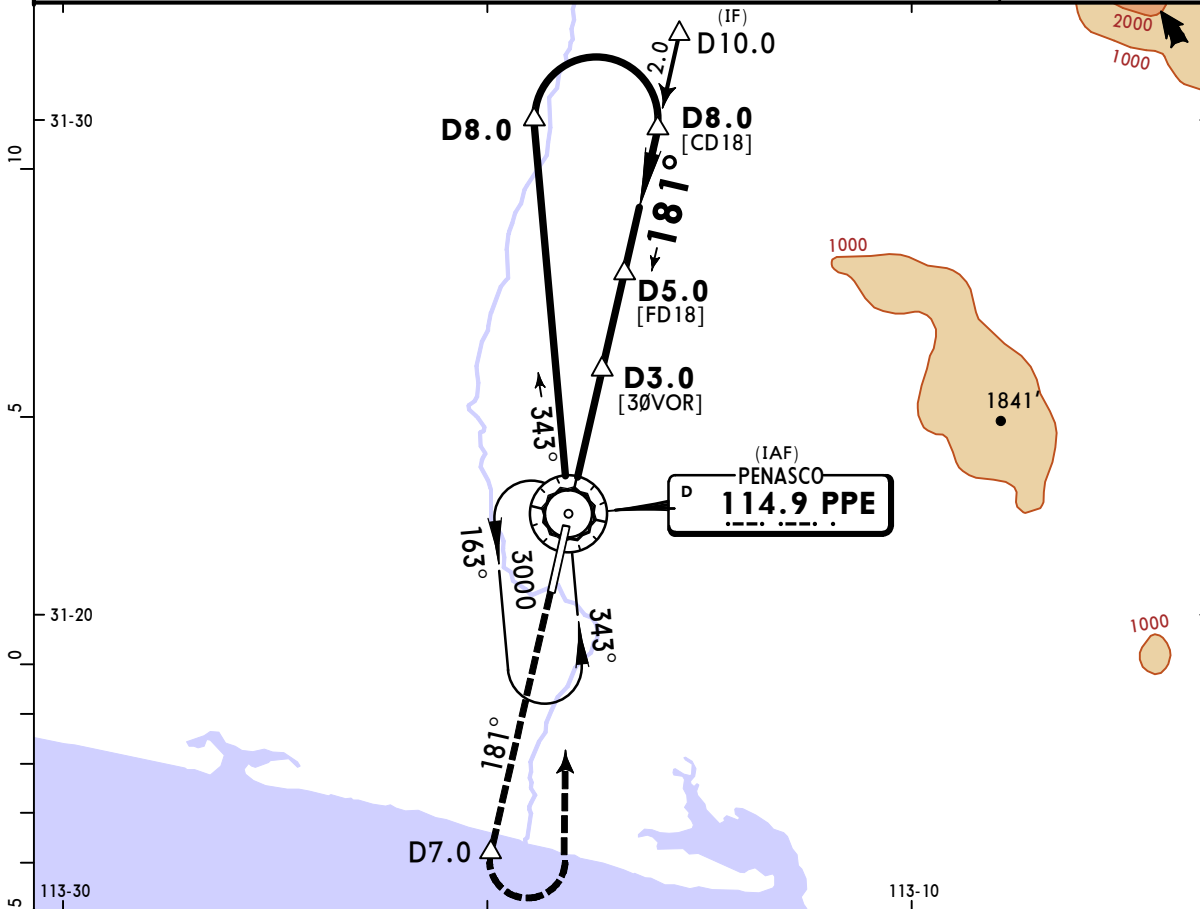
ADDITIONAL RUNWAY INFORMATION

RWY	USABLE LENGTHS	WIDTH
18 36	HIRL	148' 45m

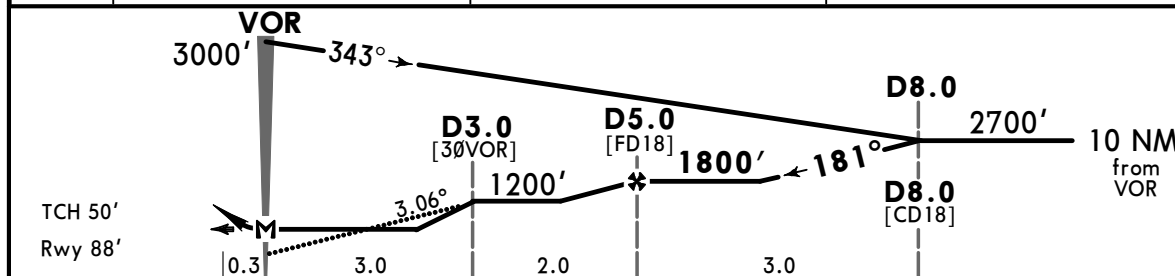
Eng	TAKE-OFF	FOR FILING AS ALTERNATE			
		A	B	C	D
1 & 2	All Rwys	NOT APPLICABLE			
3 & 4	300-1				
Eng	300-1/2	NOT APPLICABLE			

MMPE/PPE **JEPPESEN** **PUERTO PENASCO, MEXICO**
MAR DE CORTES INTL 21 JUN 24 **(13-1)** **VOR Rwy 18**

*CORTES Radio (AFIS) 122.8				*PENASCO Tower 118.85	
VOR PPE 114.9	Final Apch Crs 181°	D5.0 1800' (1712')	MDA(H) 520' (432')	Apt Elev 88' Rwy 88'	<p>MSA PPE VOR</p>
MISSED APCH: Climb via PPE VOR R-181 to D7.0, then turn LEFT within 10 NM to PPE VOR at the minimum holding altitude.					
Alt Set: IN (MB on req)		Trans level: FL 195		Trans alt: 18500'	
DME required.					



PPE DME	1.0	2.0	3.0
ALTITUDE	550'	880'	1200'

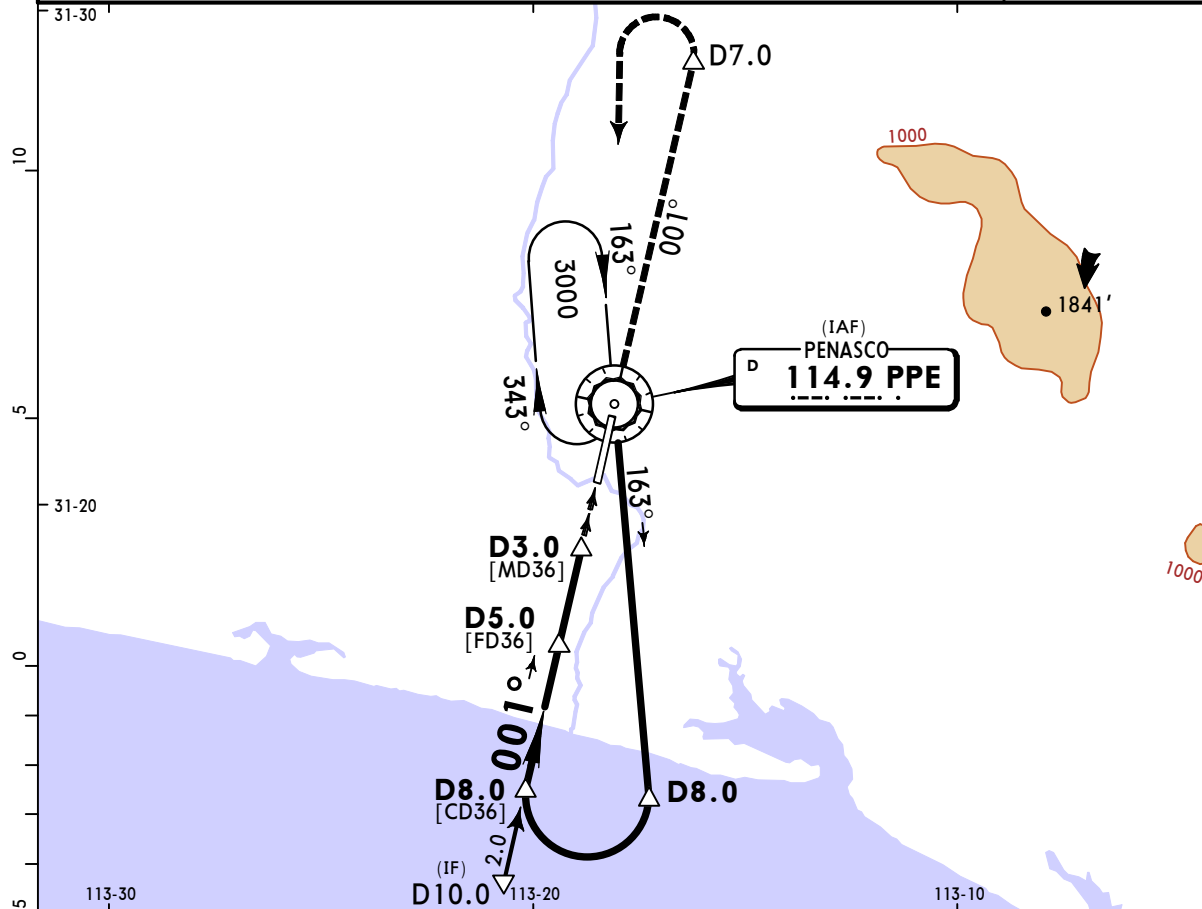
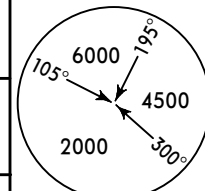


Gnd speed-Kts	70	90	100	120	140	160	PPE via 114.9 R-181 D7.0
Descent Angle 3.06°	379	487	541	650	758	866	
MAP at VOR	5.3	4:33	3:32	3:11	2:39	1:59	
FAF to THR							

STRAIGHT-IN LANDING RWY 18			CIRCLE-TO-LAND		
MDA(H) 520' (432')			Max Kts	MDA(H)	
A	1		90	580' (492') - 1	
B	1 1/4		120	600' (512') - 1 1/2	
C	1 1/2		140	660' (572') - 2	
D			165		

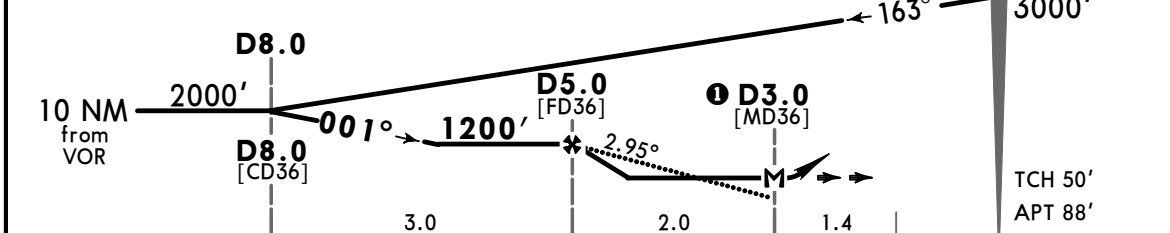
MMPE/PPE **JEPPESEN** **PUERTO PENASCO, MEXICO**
MAR DE CORTES INTL 21 JUN 24 **(13-2)** **VOR Rwy 36**

*CORTES Radio (AFIS) 122.8				*PENASCO Tower 118.85		
BRIEFING STRIP™	VOR PPE 114.9	Final Apch Crs 001°	D5.0 1200' (1112')	MDA(H) 520' (432')	Apt Elev 88'	
	MISSED APCH: Climb on runway heading and proceed on PPE VOR R-001 to D7.0, then turn LEFT within 10 NM to PPE VOR at the minimum holding altitude.					
Alt Set: IN (MB on req)		Trans level: FL 195		Trans alt: 18500'		
DME required.						MSA PPE VOR



PPE DME	5.0	4.0	3.0
ALTITUDE	1200'	890'	570'

1 Do not descend below MDA until D3.0 PPE is crossed.



Gnd speed-Kts	70	90	100	120	140	160	↑	Rwy on 114.9 hdg R-001	D7.0
Descent Angle 2.95°	365	470	522	626	731	835			
MAP at D3.0									
FAF to MAP	2.0	1:43	1:20	1:12	1:00	0:51	0:45		

STRAIGHT-IN LANDING RWY 36				CIRCLE-TO-LAND			
MDA(H) 520' (432')				MDA(H)			
A				Max Kts			
B				90	580' (492') - 1		
C	1½			120	600' (512') - 1½		
D				140	660' (572') - 2		