

General Information

Location: LA PAZ MEX
ICAO/IATA: MMLP / LAP
Lat/Long: N24° 04.4', W110° 21.8'
Elevation: 72 ft

Airport Use: Public
Daylight Savings: Not Observed
UTC Conversion: +7:00 = UTC
Magnetic Variation: 10.0° E

Fuel Types: 100-130 Octane, Jet A-1
Customs: Yes
Airport Type: IFR
Landing Fee: No
Control Tower: Yes
Jet Start Unit: No
LLWS Alert: No
Beacon: Yes

Sunrise: 1300 Z
Sunset: 0147 Z

Runway Information

Runway: 18
Length x Width: 8202 ft x 148 ft
Surface Type: asphalt
TDZ-Elev: 46 ft
Lighting: Edge

Runway: 36
Length x Width: 8202 ft x 148 ft
Surface Type: asphalt
TDZ-Elev: 72 ft
Lighting: Edge

Communication Information

ATIS: 127.900
La Paz Tower: 118.100
La Paz Approach: 120.600
Mazatlan Control ACC: 128.000 RCO

TMA

JEPPESSEN

15 MAR 24
Eff 21 Mar

10-1B

LA PAZ, MEXICO

GEN MANUEL MARQUEZ DE LEON INTL

*ATIS
127.9

*LA PAZ Approach
120.6

SPEED RESTRICTIONS WITHIN MEXICO AIRSPACE

Maximum IAS unless otherwise depicted or authorized by ATC

Below 3000' AGL within 10NM of any airport200 KTS

Below 10000' MSL within Mexico Airspace250 KTS

Below 10000' AGL within 30NM of any airport250 KTS

WITHIN LA PAZ TMA

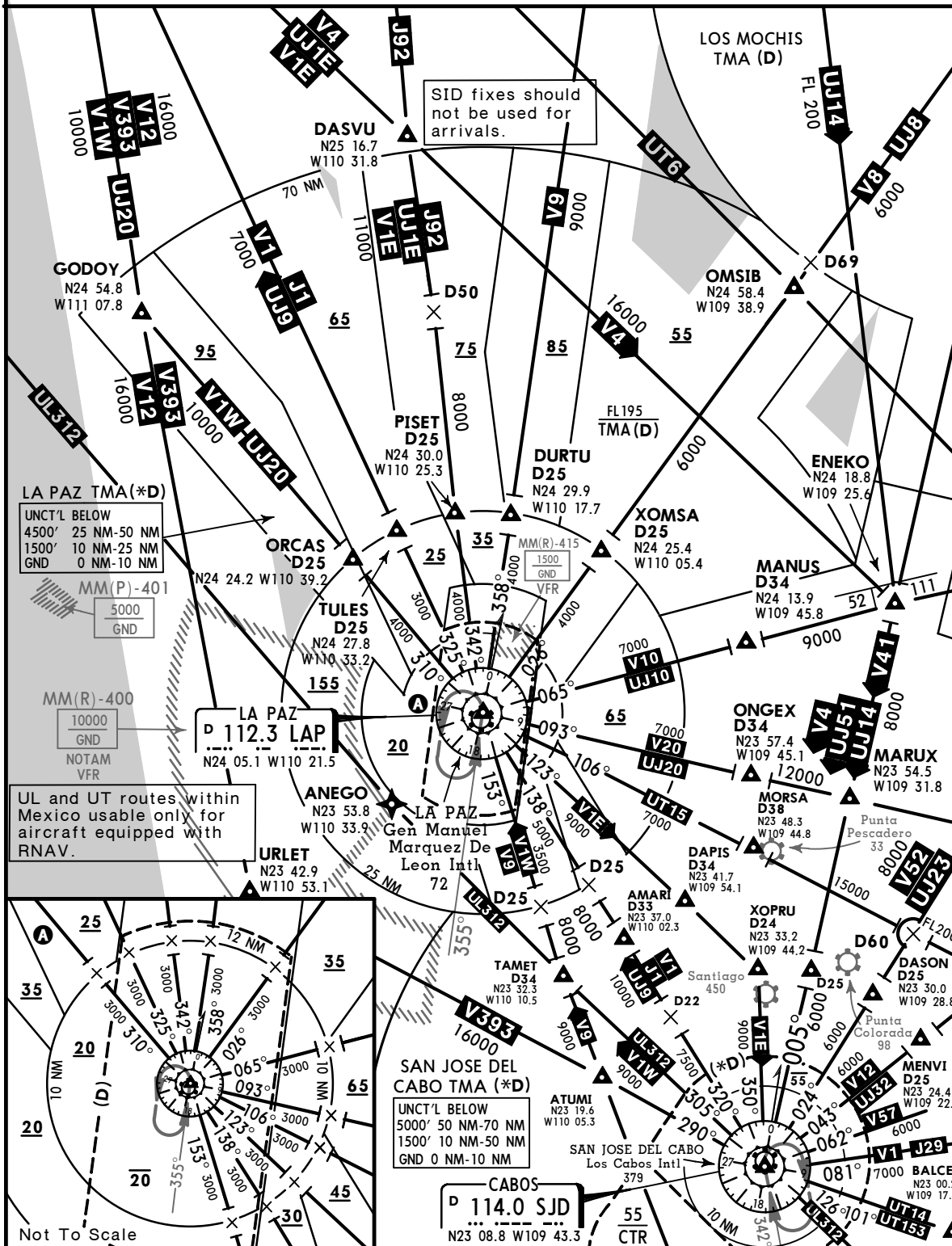
At or below 3000' MSL within 10NM of LAP VORDME200 KTS

At or below 10000' MSL within 30NM of LAP VORDME250 KTS

WITHIN SAN JOSE DEL CABO TMA

At or below 3400' MSL within 10NM of SJD VORDME200 KTS

At or below 10400' MSL within 30NM of SJD VORDME250 KTS



CHANGES: ATS system.

© JEPPESSEN, 2000, 2024. ALL RIGHTS RESERVED.

Apt Elev
 69
 Trans alt: 18500

AMARI 2B (AMARI2B) [AMAR2B]
DAPIS 1 (DAPIS1) [DAPIS1]
LA PAZ 4A (LAP4A) [LAP4A]
MANUS 2A (MANUS2A) [MANU2A]
MORSA 2A (MORSA2A) [MORSA2A]
ONGEX 2A (ONGEX2A) [ONGE2A]
RWY 18 DEPARTURES

MINIMUM CROSSING ALTITUDE	
LMM	2500
CUL	4700
MZT	4800
TNY	5000
SJD	3700
SJD	3700
LTO	4000
LTO	2000
V-1E	2000
GYM	2000
CEN	2000

These SID's require a minimum climb gradient:
 AMARI 2B, DAPIS 1, MANUS 2A, MORSA 2A
 and ONGEX 2A, 260 per NM (4.27%) to 6000.

Grnd speed-KT	75	100	150	200	250	300
260 per NM	325	433	650	867	1083	1300

SID

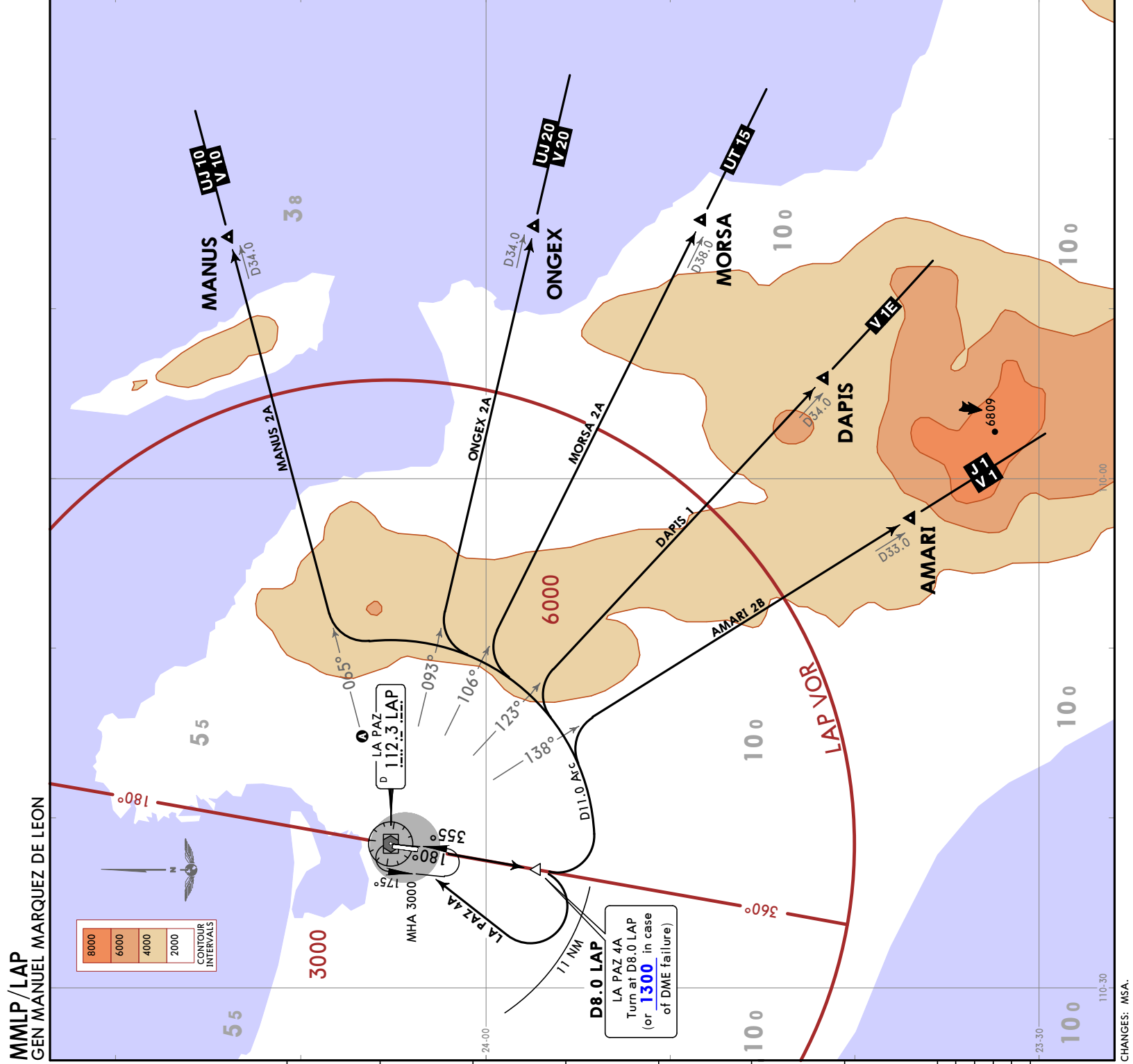
AMARI 2B
DAPIS 1
MANUS 2A
MORSA 2A
ONGEX 2A

INITIAL CLIMB

Climb on LAP R180 until D8.0 LAP, then turn LEFT and proceed on D11.0 Arc LAP to intercept the corresponding radial from LAP VOR to AMARI, DAPIS, MANUS, MORSA or ONGEX and continue on the assigned route or in accordance with ATC instructions.

LA PAZ 4A

Climb on LAP R180 until D8.0 LAP (or 1300 in case of DME failure), turn RIGHT within 11 NM to LAP VOR and depart LAP VOR at the MCA of the assigned route or in accordance with ATC instructions.

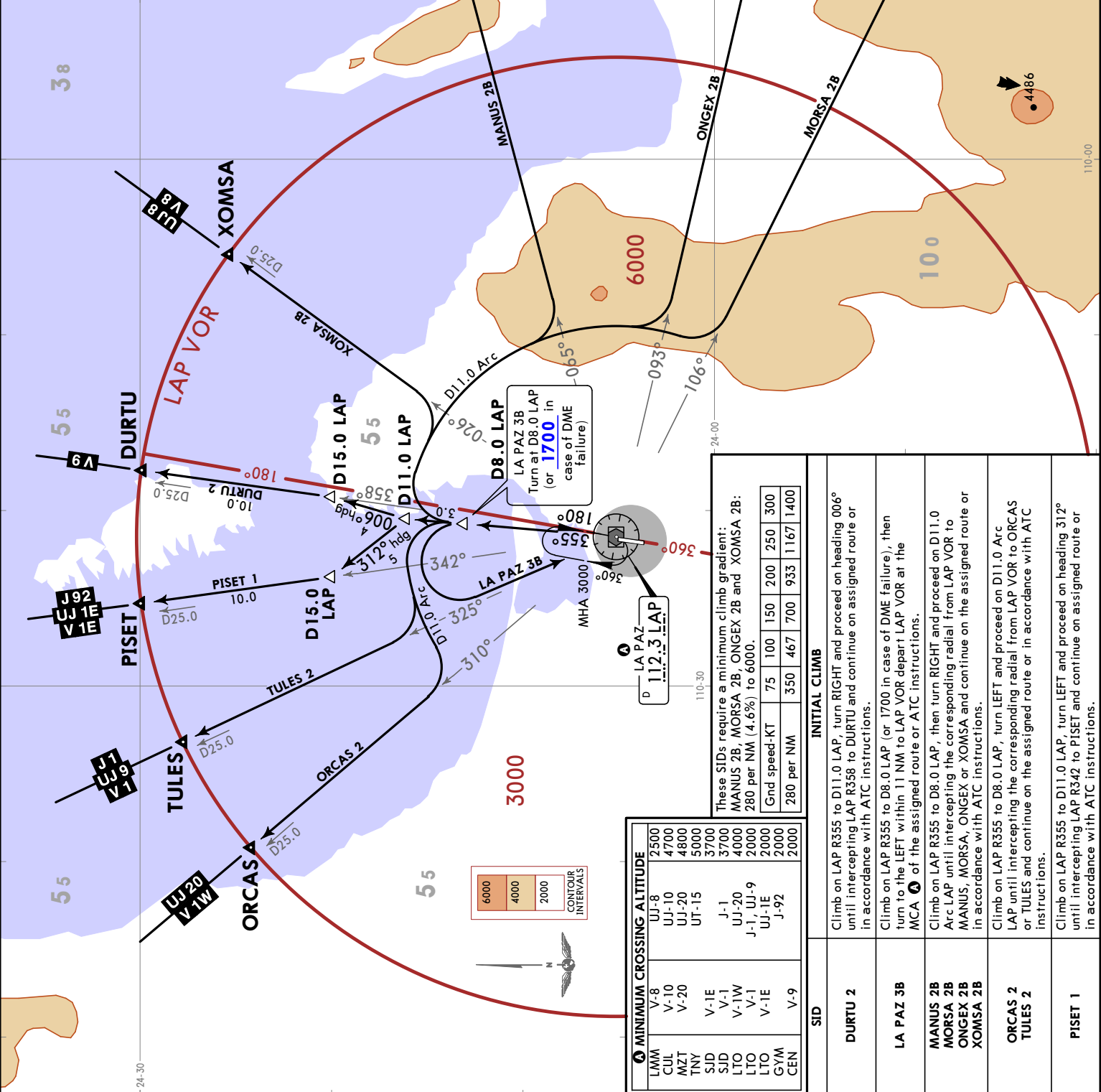


JEPPESEN
 22 FEB 19
 10-3A EFF 28 Feb

MMLP/LAP
 GEN MANUEL MARQUEZ DE LEON

LA PAZ, MEXICO
SID

Apt Elev 69	Trans alt: 18500
DURTU 2 (DURTU2) [DURTU2] LA PAZ 3B (LAP3B) [LAP3B] MANUS 2B (MANUS2B) [MANU2B] MORSA 2B (MORSA2B) [MORS2B] ONGEX 2B (ONGEX2B) [ONGE2B] ORCAS 2 (ORCAS2) [ORCAS2] PISET 1 (PISET1) [PISET1] TULES 2 (TULES2) [TULES2] XOMSA 2B (XOMSA2B) [XOMS2B] RWY 36 DEPARTURES	



These SIDs require a minimum climb gradient:
 MANUS 2B, MORSA 2B, ONGEX 2B and XOMSA 2B:
 280 per NM (4.6%) to 6000.
 Gnd speed-KT 75 100 150 200 250 300
 280 per NM 350 467 700 933 1167 1400

MINIMUM CROSSING ALTITUDE	INITIAL CLIMB
LMM V-8 2500	Climb on LAP R355 to D11.0 LAP, turn RIGHT and proceed on heading 006° until intercepting LAP R358 to DURTU and continue on assigned route or in accordance with ATC instructions.
CUJ V-10 4700	Climb on LAP R355 to D8.0 LAP (or 1700 in case of DME failure), then turn to the LEFT within 11 NM to LAP VOR depart LAP VOR at the MCA of the assigned route or ATC instructions.
MZT V-20 4800	Climb on LAP R355 to D8.0 LAP, then turn RIGHT and proceed on D11.0 Arc LAP until intercepting the corresponding radial from LAP VOR to MANUS, MORSA, ONGEX or XOMSA and continue on the assigned route or in accordance with ATC instructions.
TNY V-1E 3700	Climb on LAP R355 to D8.0 LAP, turn LEFT and proceed on D11.0 Arc LAP until intercepting the corresponding radial from LAP VOR to ORCAS or TULES and continue on the assigned route or in accordance with ATC instructions.
SJD V-1 3700	Climb on LAP R355 to D11.0 LAP, turn LEFT and proceed on heading 312° until intercepting LAP R342 to PISET and continue on assigned route or in accordance with ATC instructions.
LTO V-1W 4000	
LTO V-1 2000	
V-1E 2000	
GYM V-1E 2000	
CEN V-9 2000	

MMLP/LAP

Apt Elev **72'**
N24 04.4 W110 21.8

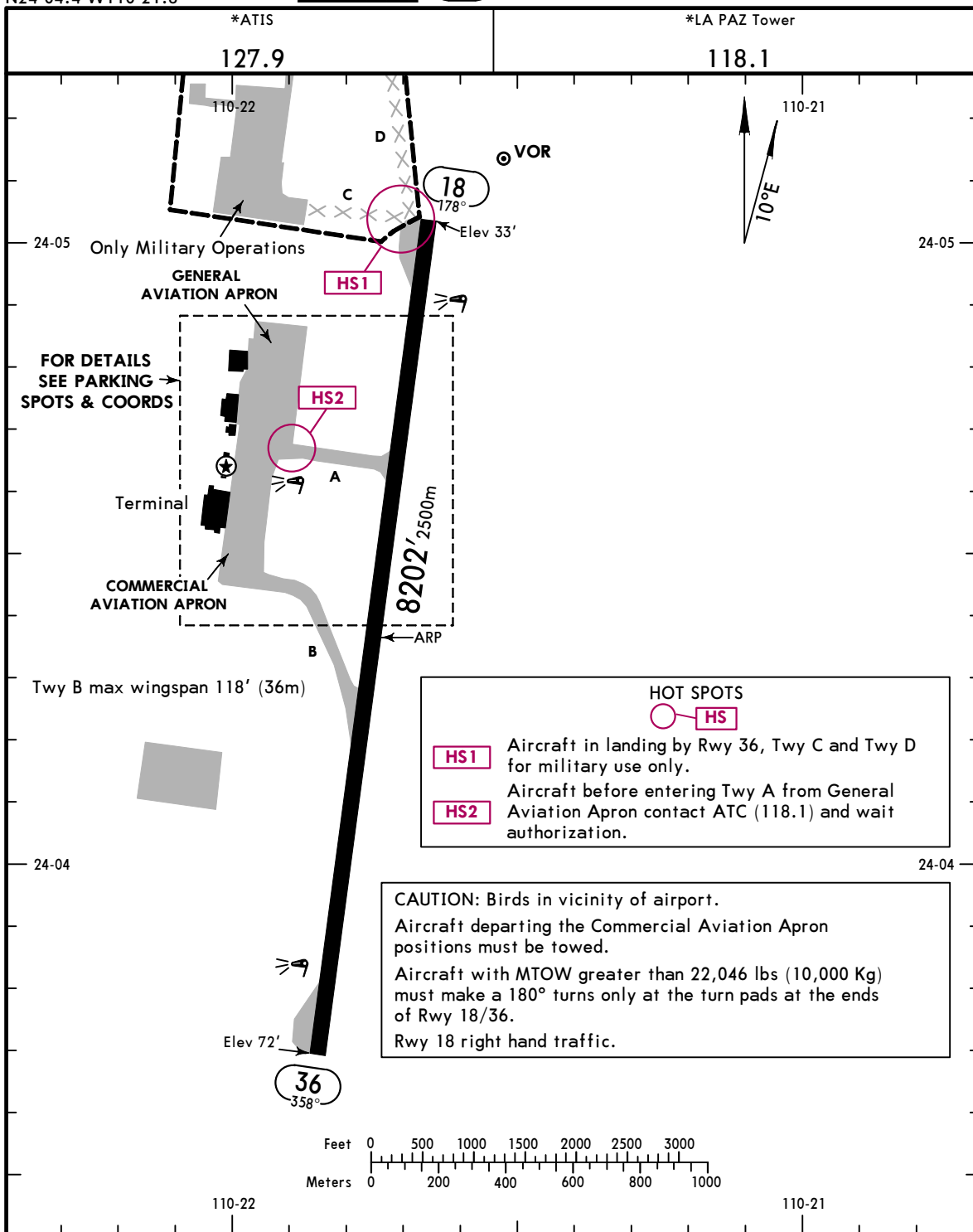


19 JAN 24
Eff 25 Jan

(10-9)

GEN MANUEL MARQUEZ DE LEON INTL

LA PAZ, MEXICO



HOT SPOTS

HS1 Aircraft in landing by Rwy 36, Twy C and Twy D for military use only.

HS2 Aircraft before entering Twy A from General Aviation Apron contact ATC (118.1) and wait authorization.

CAUTION: Birds in vicinity of airport.

Aircraft departing the Commercial Aviation Apron positions must be towed.

Aircraft with MTOW greater than 22,046 lbs (10,000 Kg) must make a 180° turns only at the turn pads at the ends of Rwy 18/36.

Rwy 18 right hand traffic.

ADDITIONAL RUNWAY INFORMATION

RWY	USABLE LENGTHS	LANDING BEYOND	TAKE-OFF	WIDTH
18 36	HIRL REIL PAPI-L (angle 3.0°)			148' 45m

State	TAKE-OFF	FOR FILING AS ALTERNATE	
		ILS approaches	Other
1 & 2 Eng	600 - V2 V3200m	A	1000 - V3 V4800m
		B	
3 or more Eng	300 - V1 V1600m	C	
		D	

For departure procedures and MCA's see La Paz Departures 10-3, 10-3A.

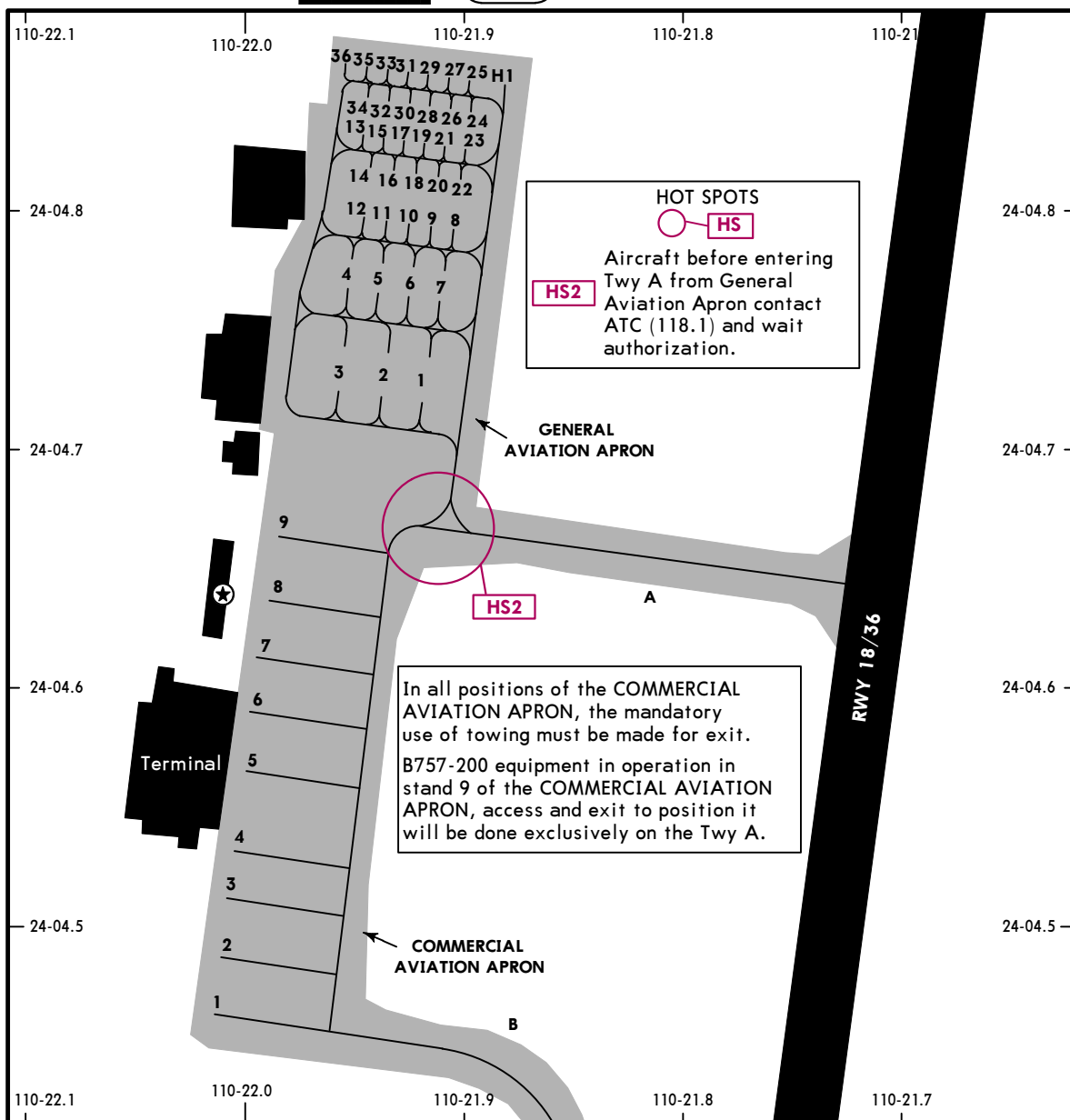
MMLP/LAP

JEPPESEN

LA PAZ, MEXICO

19 JAN 24
Eff 25 Jan

10-9A GEN MANUEL MARQUEZ DE LEON INTL



HOT SPOTS

 Aircraft before entering
 Twy A from General
 Aviation Apron contact
 ATC (118.1) and wait
 authorization.

In all positions of the **COMMERCIAL AVIATION APRON**, the mandatory use of towing must be made for exit.
 B757-200 equipment in operation in stand 9 of the **COMMERCIAL AVIATION APRON**, access and exit to position it will be done exclusively on the Twy A.

PARKING SPOT COORDINATES COMMERCIAL AVIATION APRON

SPOT No.	COORDINATES	CAPACITY
1	N24 04.5 W110 22.0	B737-300
2	N24 04.5 W110 22.0	ERJ-145
3, 4	N24 04.5 W110 22.0	A-321-NEO
5 thru 7	N24 04.6 W110 22.0	A-321-NEO
8	N24 04.6 W110 22.0	B737-MAX9
9	N24 04.6 W110 22.0	B757-200

PARKING SPOT COORDINATES GENERAL AVIATION APRON

SPOT No.	COORDINATES	CAPACITY
1	N24 04.7 W110 21.9	GLF4
2	N24 04.7 W110 21.9	GLF5
3	N24 04.7 W110 22.0	GLF5
4	N24 04.8 W110 22.0	CL35
5 thru 7	N24 04.8 W110 21.9	CL35
8 thru 21	N24 04.8 W110 21.9	LJ60
22 thru 24, 26, 28, 30, 32, 34	N24 04.8 W110 21.9	C421
25, 27, 29, 31, 33, 35	N24 04.9 W110 21.9	C421
36	N24 04.9 W110 22.0	C421
H1	N24 04.9 W110 21.9	B212

MMLP/LAP

19 JAN 24

Eff 25 Jan

JEPPESSEN

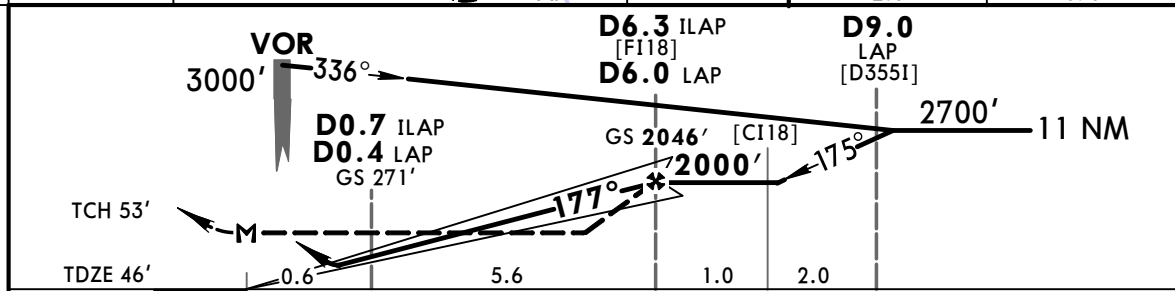
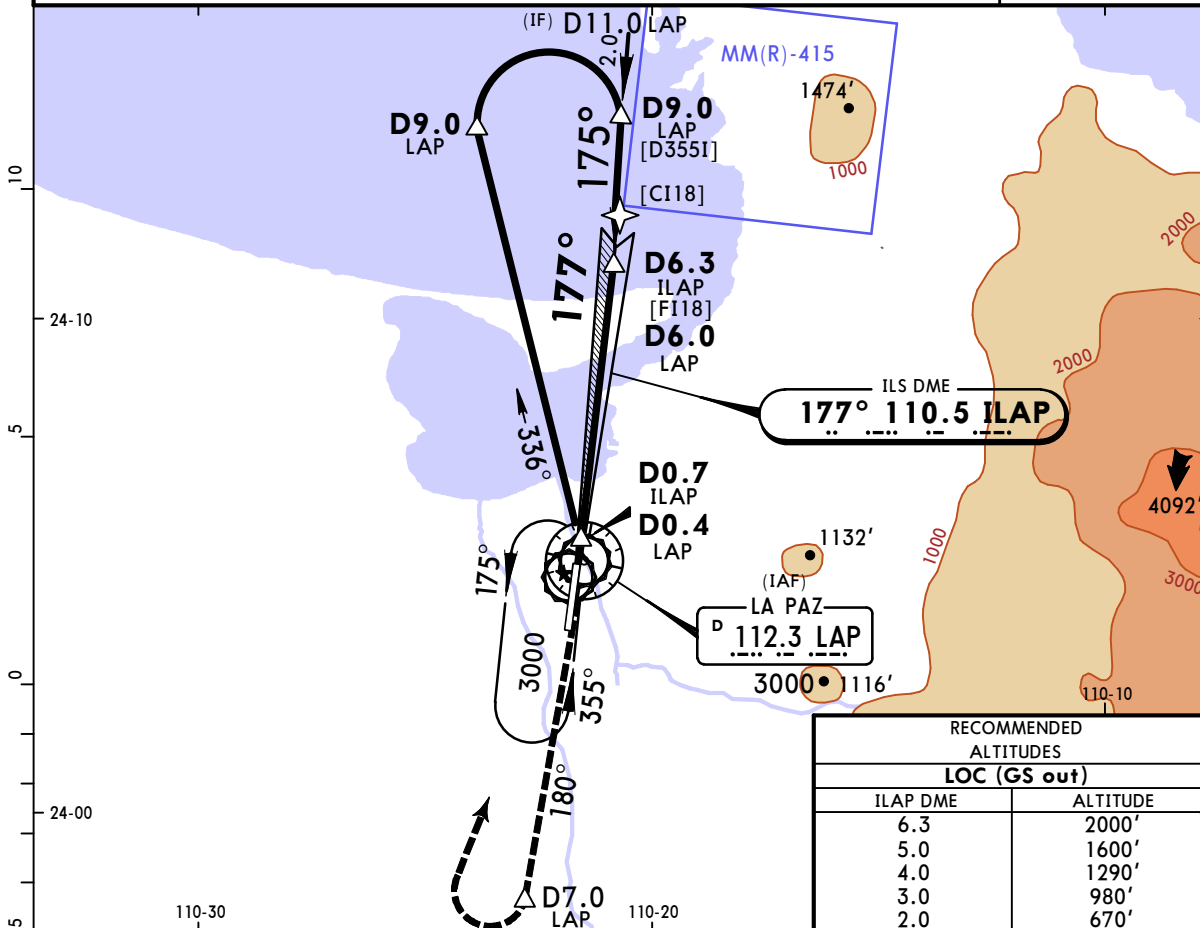
LA PAZ, MEXICO

GEN MANUEL MARQUEZ DE LEON INTL

(11-1)

ILS or LOC Z Rwy 18

*ATIS 127.9		*LA PAZ Approach 120.6			*LA PAZ Tower 118.1	
LOC ILAP 110.5	Final Apch Crs 177°	GS D6.3 ILAP D6.0 LAP 2046' (2000')	ILS DA(H) 271' (225')	Apt Elev 72'	TDZE 46'	
MISSED APCH: Climb outbound on LAP VOR R-180 to D7.0 LAP, make a RIGHT teardrop turn to LAP VOR within 10 NM to the minimum holding altitude.						
Alt Set: MB (IN on req) TDZ Elev: 1 MB Trans level: FL195 Trans alt: 18500' VOR/DME required.						



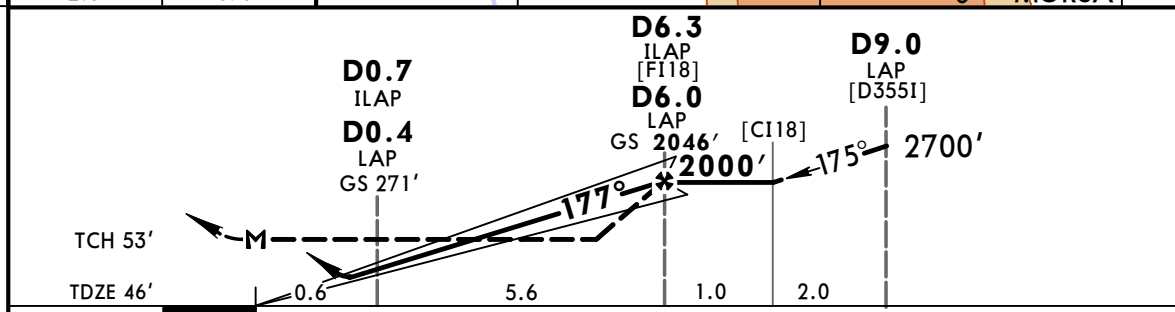
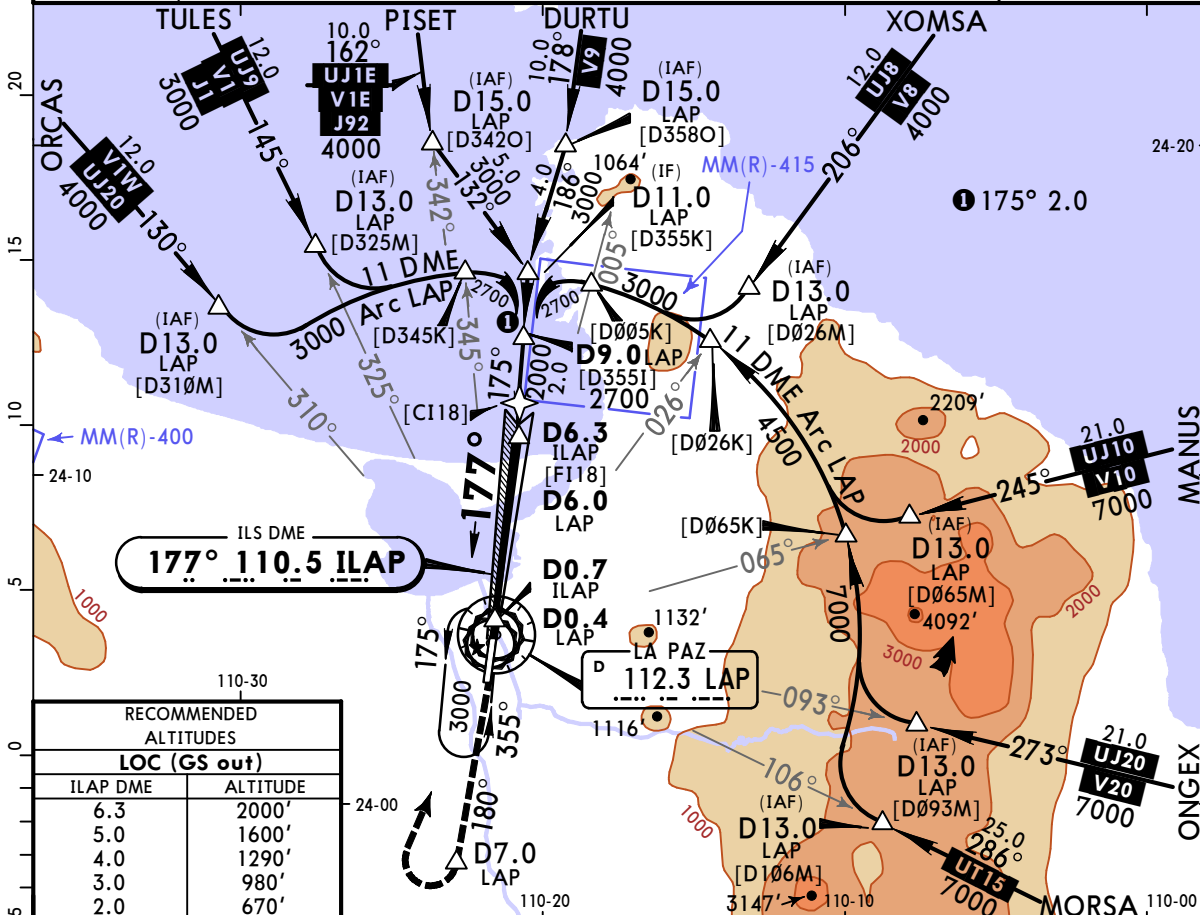
Gnd speed-Kts	70	90	100	120	140	160	REIL PAPI-L	LAP on 112.3 R-180	D7.0 LAP
GS	2.90°	359	462	513	616	718			
FAF to MAP	6.1	5:14	4:04	3:40	3:03	2:37	2:17		

State		STRAIGHT-IN LANDING		CIRCLE-TO-LAND			
ILS DA(H) 271' (225')		LOC (GS out) MDA(H) 540' (494')		Max Kts	MDA(H)		
A			V1 V1600m	90	680' (608')	V1	V1600m
B			V1 V1600m	120	680' (608')	V1 3/4	V2800m
C	V3/4	V1200m	V1 1/2 V2400m	140	680' (608')	V2	V3200m
D			V1 1/2 V2400m	165	680' (608')	V2	V3200m

MMLP/LAP
GEN MANUEL MARQUEZ DE LEON INTL (11-2)

LA PAZ, MEXICO
ILS or LOC Y Rwy 18

*ATIS 127.9		*LA PAZ Approach 120.6		*LA PAZ Tower 118.1	
LOC ILAP 110.5	Final Apch Crs 177°	GS D6.3 ILAP D6.0 LAP 2046' (2000')	ILS DA(H) 271' (225')	Apt Elev 72' TDZE 46'	
MISSED APCH: Climb outbound on LAP VOR R-180 to D7.0 LAP, make a RIGHT teardrop turn to LAP VOR within 10 NM to the minimum holding altitude.					
Alt Set: MB (IN on req) TDZ Elev: 1 MB Trans level: FL195 Trans alt: 18500' VOR/DME required.					



Gnd speed-Kts	70	90	100	120	140	160	REIL PAPI-L	LAP on 112.3 R-180	D7.0 LAP
GS	2.90°	359	462	513	616	718			
FAF to MAP	6.1	5:14	4:04	3:40	3:03	2:37	2:17		

State				STRAIGHT-IN LANDING				CIRCLE-TO-LAND			
ILS DA(H) 271' (225')		LOC (GS out) MDA(H) 540' (494')		Max Kts	MDA(H)						
A					90	680' (608')	V1	V1600m			
B					120	680' (608')	V1 3/4	V2800m			
C	V3/4	V1200m		140	680' (608')	V1 3/4	V2800m				
D			V1 1/2 V2400m		165	680' (608')	V2	V3200m			

MMLP/LAP

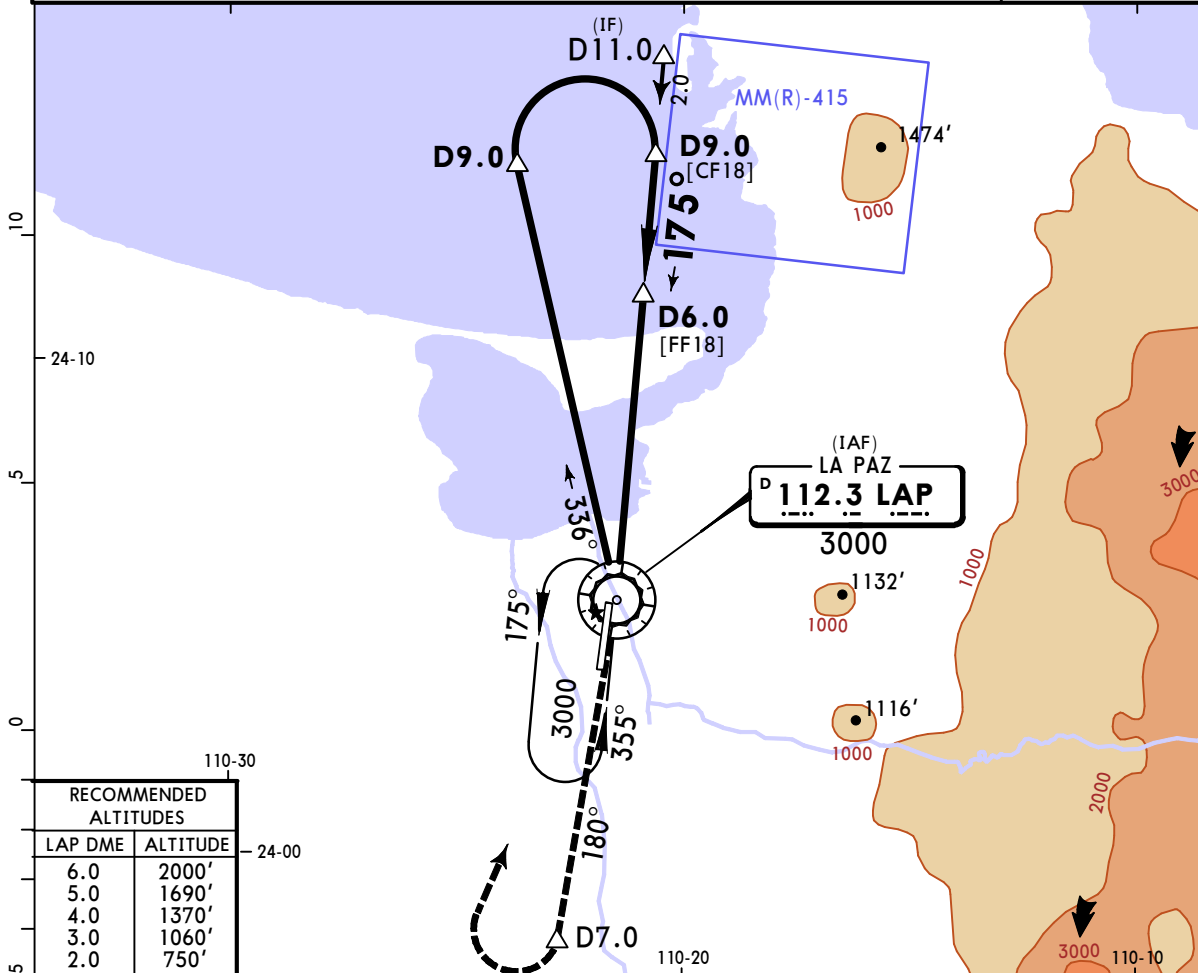
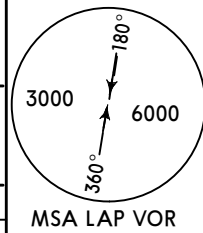
GEN MANUEL MARQUEZ DE LEON INTL



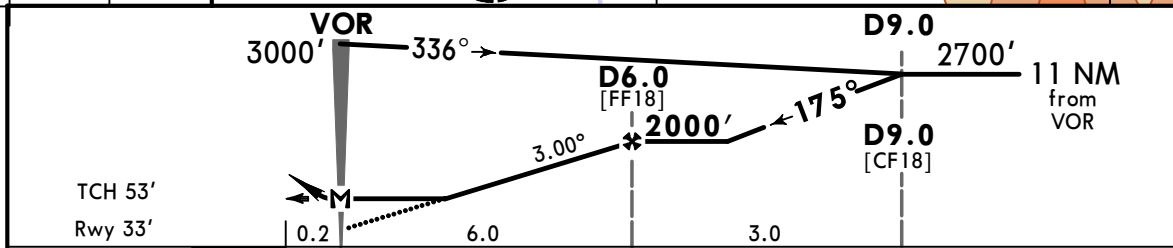
13-1 19 JAN 24
Eff 25 Jan

LA PAZ, MEXICO
VOR Z Rwy 18

*ATIS 127.9		*LA PAZ Approach 120.6		*LA PAZ Tower 118.1	
VOR LAP 112.3	Final Apch Crs 175°	D6.0 2000' (1967')	MDA(H) 540' (507')	Apt Elev 72' Rwy 33'	
MISSED APCH: Climb outbound via LAP VOR R-180 to D7.0, then turn RIGHT within 10 NM to LAP VOR at the minimum holding altitude.					
Alt Set: IN (MB on req)		Trans level: FL 195		Trans alt: 18500'	
DME required.					



RECOMMENDED ALTITUDES	
LAP DME	ALTITUDE
6.0	2000'
5.0	1690'
4.0	1370'
3.0	1060'
2.0	750'



Gnd speed-Kts	70	90	100	120	140	160	REIL PAPI-L	LAP via 112.3 R-180	D7.0
Descent Angle 3.00°	372	478	531	637	743	849			
MAP at VOR									
FAF to MAP	6.0	5:09	4:00	3:36	3:00	2:34	2:15		

State	STRAIGHT-IN LANDING				CIRCLE-TO-LAND				
	MDA(H) 540' (507')				MDA(H)				
A					Max Kts				
B	V1	V1600m			90	680' (608')	V1	V1600m	
C	V1 1/2	V2400m			140	680' (608')	V1 3/4	V2800m	
D	V1 3/4	V2800m			165	680' (608')	V2	V3200m	

MMLP/LAP

GEN MANUEL MARQUEZ DE LEON INTL (13-2)

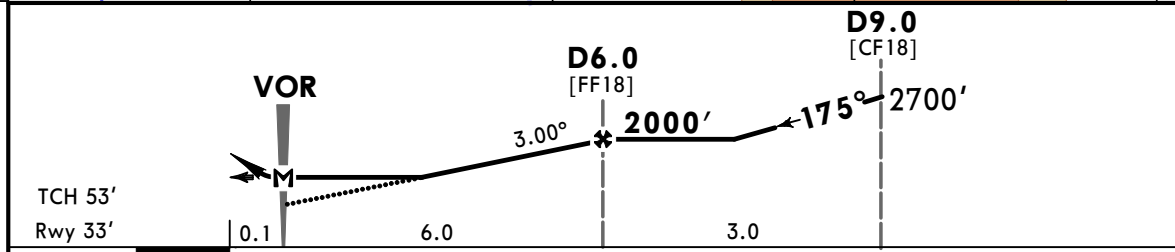
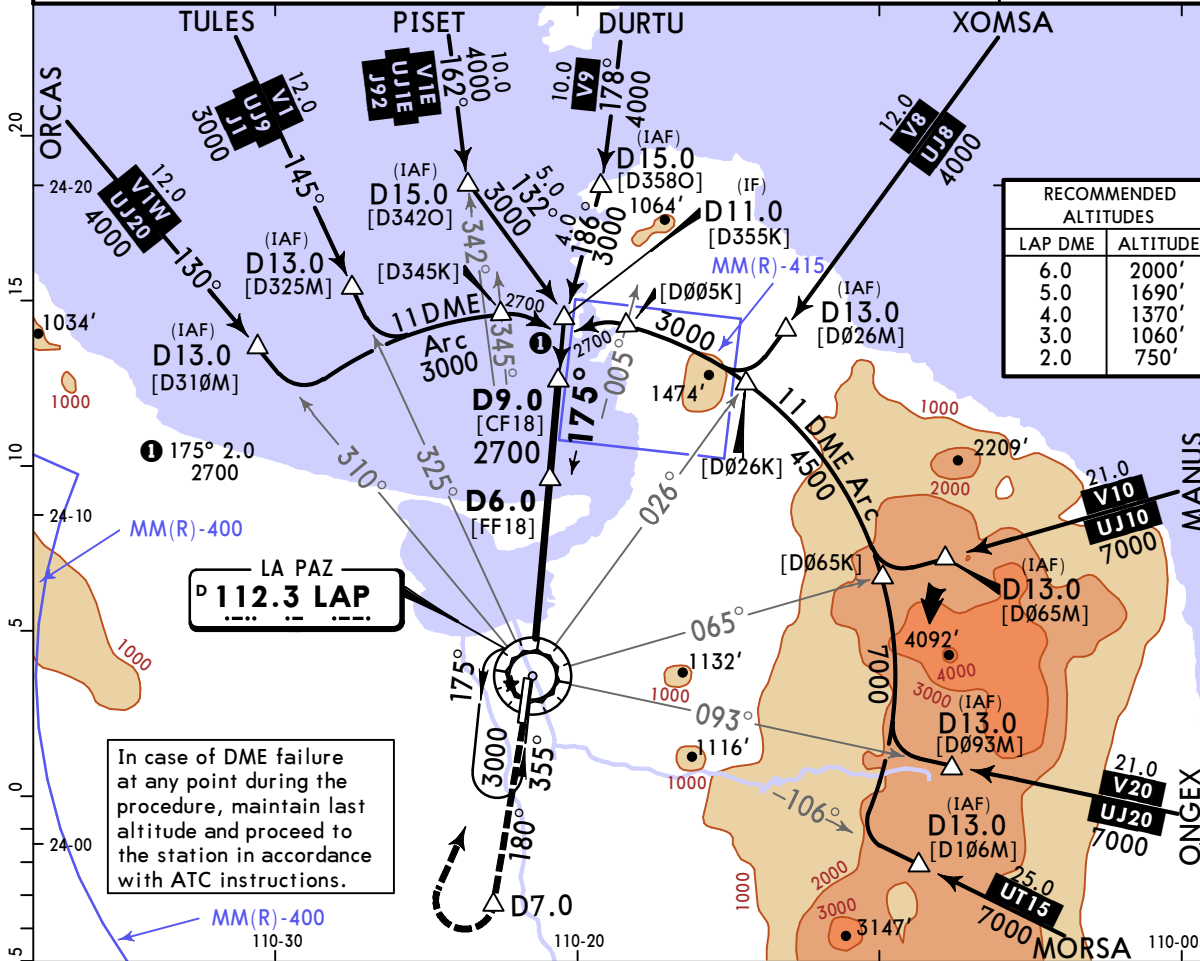
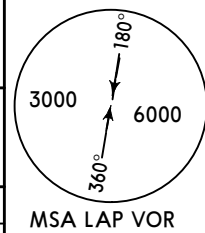


19 JAN 24
Eff 25 Jan

LA PAZ, MEXICO

VOR Y Rwy 18

*ATIS 127.9		*LA PAZ Approach 120.6		*LA PAZ Tower 118.1	
VOR LAP 112.3	Final Apch Crs 175°	D6.0 2000' (1967')	MDA(H) 540' (507')	Apt Elev 72' Rwy 33'	
MISSED APCH: Climb outbound via LAP VOR R-180 to D7.0, then turn RIGHT within 10 NM to LAP VOR to the minimum holding altitude.					
Alt Set: IN (MB on req)		Trans level: FL 195		Trans alt: 18500'	
DME required.					



Gnd speed-Kts	70	90	100	120	140	160	REIL PAPI-L	LAP via 112.3 R-180	D7.0
Descent Angle 3.00°	372	478	531	637	743	849			
MAP at VOR									
FAF to MAP	6.0	5:09	4:00	3:36	3:00	2:34	2:15		

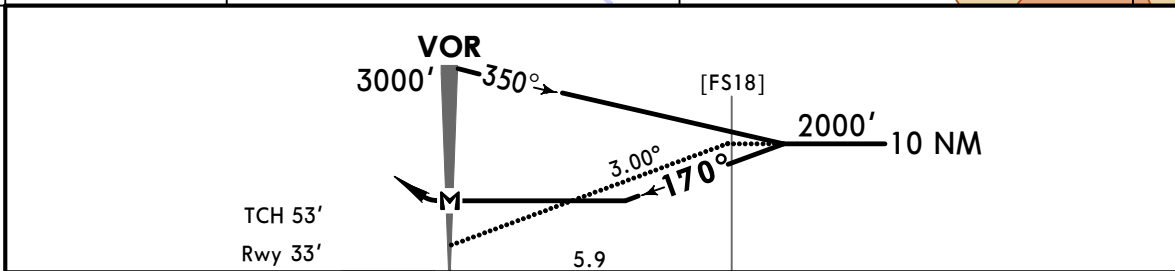
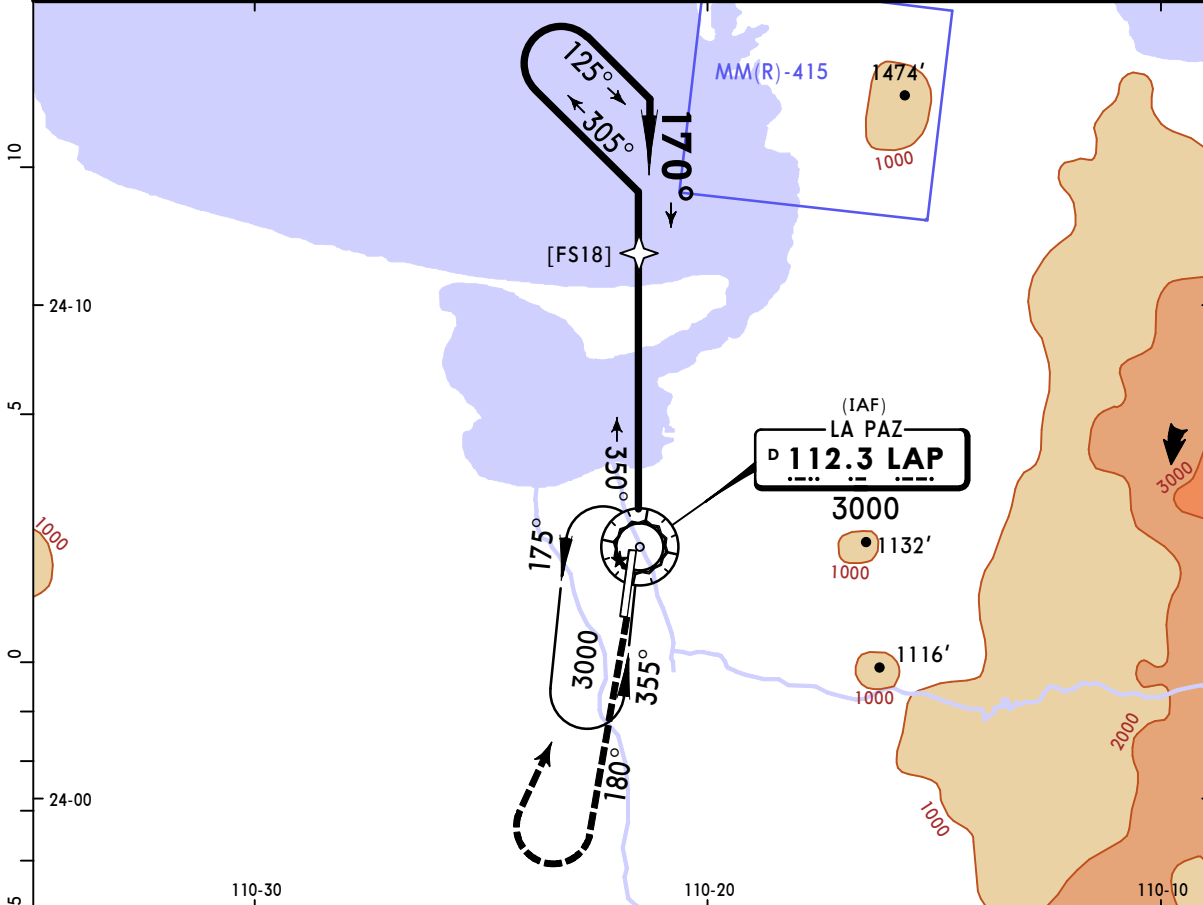
State	STRAIGHT-IN LANDING				CIRCLE-TO-LAND			
	MDA(H) 540' (507')				MDA(H)			
A	V1 V1600m				Max Kts 90	680' (608')	V1	V1600m
B	V1 1/2 V2400m				120	680' (608')	V1 3/4	V2800m
C	V1 3/4 V2800m				140	680' (608')	V2	V3200m
D					165	680' (608')		

MMLP/LAP
GEN MANUEL MARQUEZ DE LEON INTL

JEPPESEN
 19 JAN 24
(13-3) Eff 25 Jan

LA PAZ, MEXICO
VOR X Rwy 18

*ATIS 127.9		*LA PAZ Approach 120.6			*LA PAZ Tower 118.1																	
VOR LAP 112.3	Final Apch Crs 170°	No FAF	MDA(H) 680' (647')	Apt Elev 72'	Rwy 33'																	
MISSED APCH: Climb outbound via LAP VOR R-180, then turn RIGHT within 10 NM to the minimum holding altitude.																						
MISSED APCH: Max Distance Outbound Track 7 NM																						
<table border="1"> <tr> <td>Gnd speed-Kts</td> <td>80</td> <td>100</td> <td>120</td> <td>140</td> <td>160</td> <td>180</td> <td>200</td> </tr> <tr> <td>Time</td> <td>5:15</td> <td>4:12</td> <td>3:30</td> <td>3:00</td> <td>2:38</td> <td>2:20</td> <td>2:06</td> </tr> </table>								Gnd speed-Kts	80	100	120	140	160	180	200	Time	5:15	4:12	3:30	3:00	2:38	2:20
Gnd speed-Kts	80	100	120	140	160	180	200															
Time	5:15	4:12	3:30	3:00	2:38	2:20	2:06															
Alt Set: IN (MB on req)		Trans level: FL 195			Trans alt: 18500'		MSA LAP VOR															

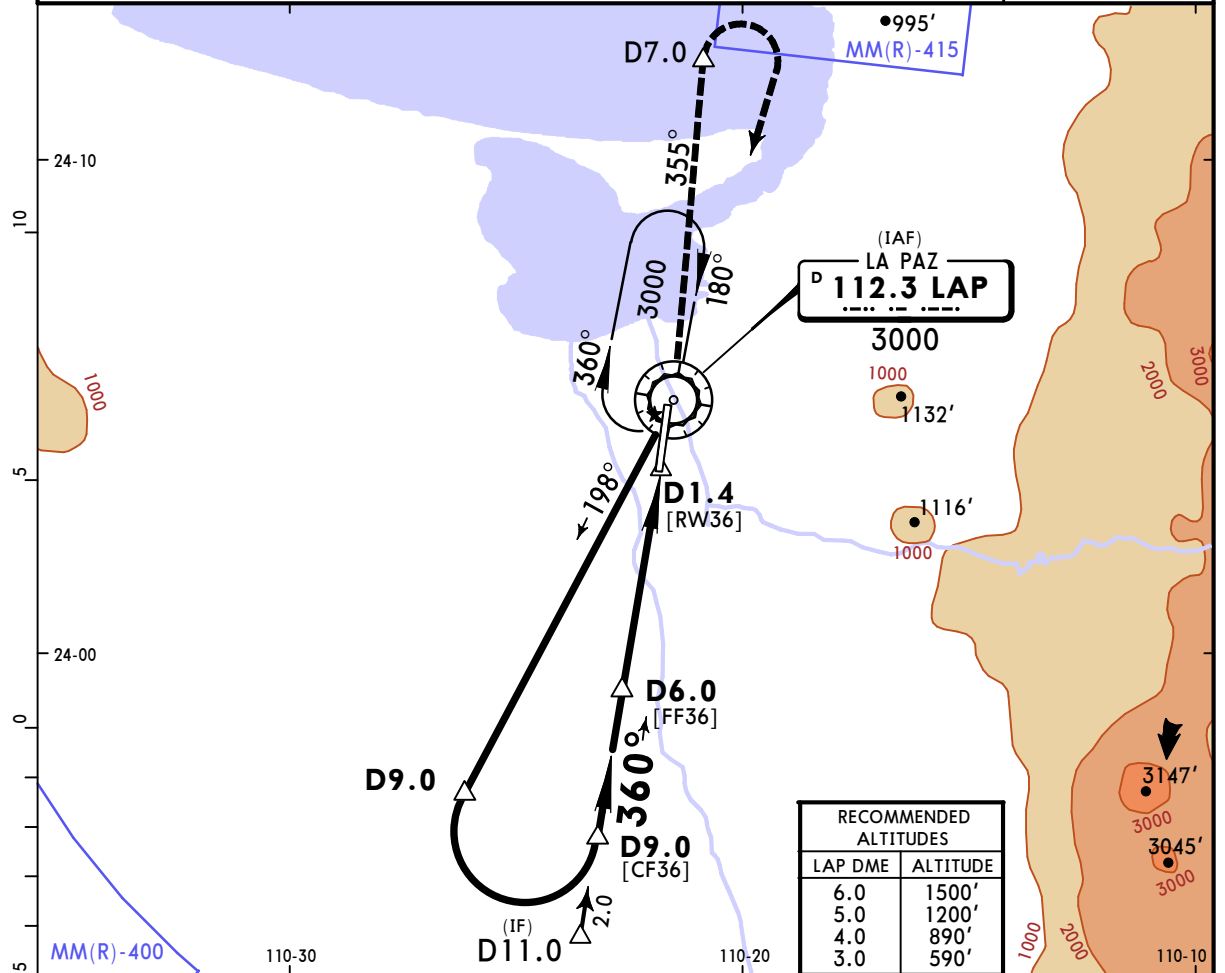


Gnd speed-Kts	70	90	100	120	140	160	REIL PAPI-L	LAP via 112.3 R-180	RT within 10 NM	LAP 112.3
Descent Angle	3.00°	372	478	531	637	743				

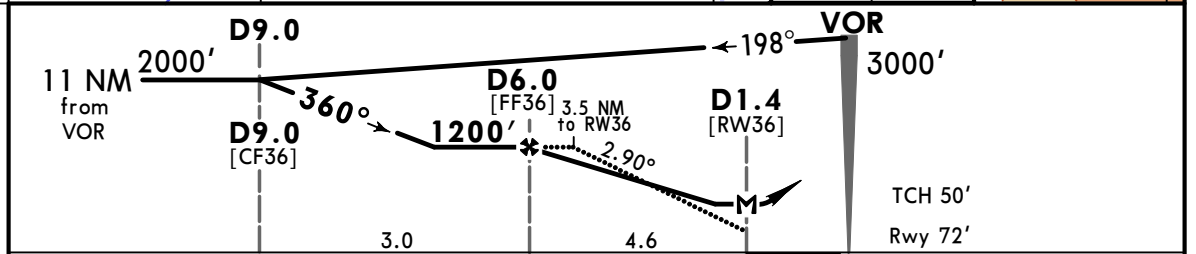
MAP at VOR		STRAIGHT-IN LANDING				CIRCLE-TO-LAND			
State		MDA(H) 680' (647')				Max Kts			
A		V1	V1600m			90	680' (608')	V1	V1600m
B		V1 3/4	V2800m			120	680' (608')	V1 3/4	V2800m
C		V2	V3200m			140	680' (608')	V2	V3200m
D						165	680' (608')		

MMLP/LAP **JEPPESEN** **LA PAZ, MEXICO**
GEN MANUEL MARQUEZ DE LEON INTL (13-4) 19 JAN 24 **VOR Z Rwy 36**
 Eff 25 Jan

*ATIS 127.9		*LA PAZ Approach 120.6		*LA PAZ Tower 118.1	
VOR LAP 112.3	Final Apch Crs 360°	D6.0 1200' (1128')	MDA(H) 580' (508')	Apt Elev 72' Rwy 72'	
MISSED APCH: Climb outbound via LAP VOR R-355 to D7.0, then turn RIGHT within 10 NM to LAP VOR to the minimum holding altitude.					
Alt Set: IN (MB on req)		Trans level: FL 195		Trans alt: 18500'	
DME required.					



RECOMMENDED ALTITUDES	
LAP DME	ALTITUDE
6.0	1500'
5.0	1200'
4.0	890'
3.0	590'



Gnd speed-Kts	70	90	100	120	140	160	REIL PAPI-L	LAP via 112.3 R-355	D7.0
Descent Angle 2.90°	359	462	513	616	718	821			
MAP at D1.4									
FAF to MAP	4.5	3:51	3:00	2:42	2:15	1:56	1:41		

State	STRAIGHT-IN LANDING		CIRCLE-TO-LAND	
	MDA(H)	580' (508')	Max Kts	MDA(H)
A	V1	V1600m	90	680' (608') V1 V1600m
B	V1 1/2	V2400m	120	680' (608') V1 3/4 V2800m
C	V1 3/4	V2800m	140	680' (608') V2 V3200m
D			165	

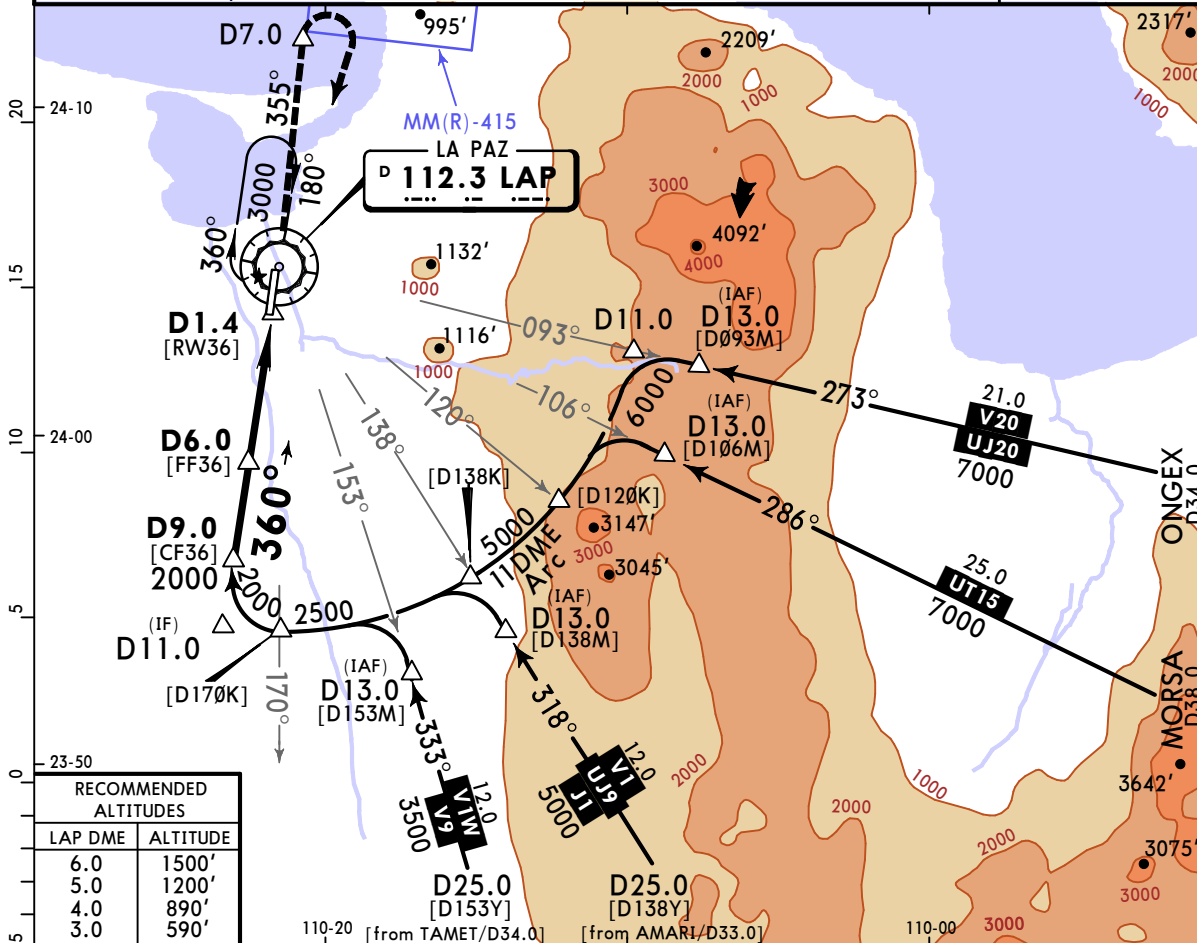
MMLP/LAP

GEN MANUEL MARQUEZ DE LEON INTL (13-5) 2 FEB 24

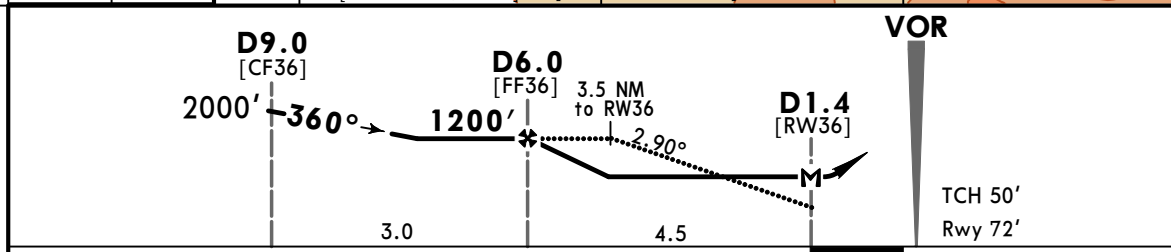
LA PAZ, MEXICO

VOR Y Rwy 36

*ATIS 127.9		*LA PAZ Approach 120.6		*LA PAZ Tower 118.1		
VOR LAP 112.3	Final Apch Crs 360°	D6.0 1200' (1128')	MDA(H) 580' (508')	Apt Elev 72' Rwy 72'		
MISSED APCH: Climb outbound via LAP VOR R-355 to D7.0, then turn RIGHT within 10 NM to LAP VOR to the minimum holding altitude.						
Alt Set: IN (MB on req)			Trans level: FL 195			Trans alt: 18500'
1. DME required. 2. In case of DME failure at any point during the procedure, maintain last altitude and proceed to the station in accordance with ATC instructions.						



RECOMMENDED ALTITUDES	
LAP DME	ALTITUDE
6.0	1500'
5.0	1200'
4.0	890'
3.0	590'



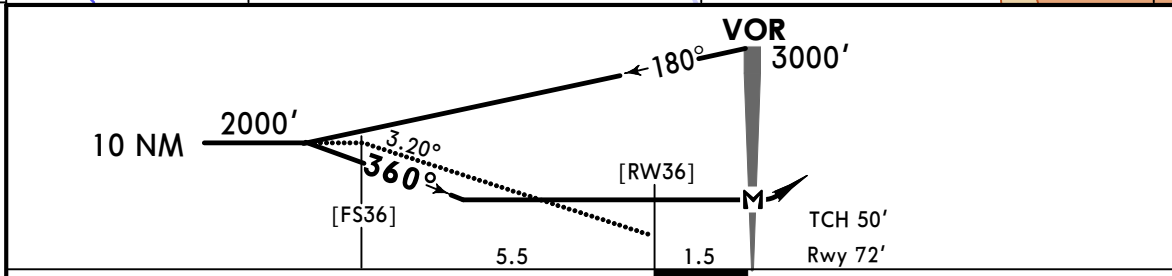
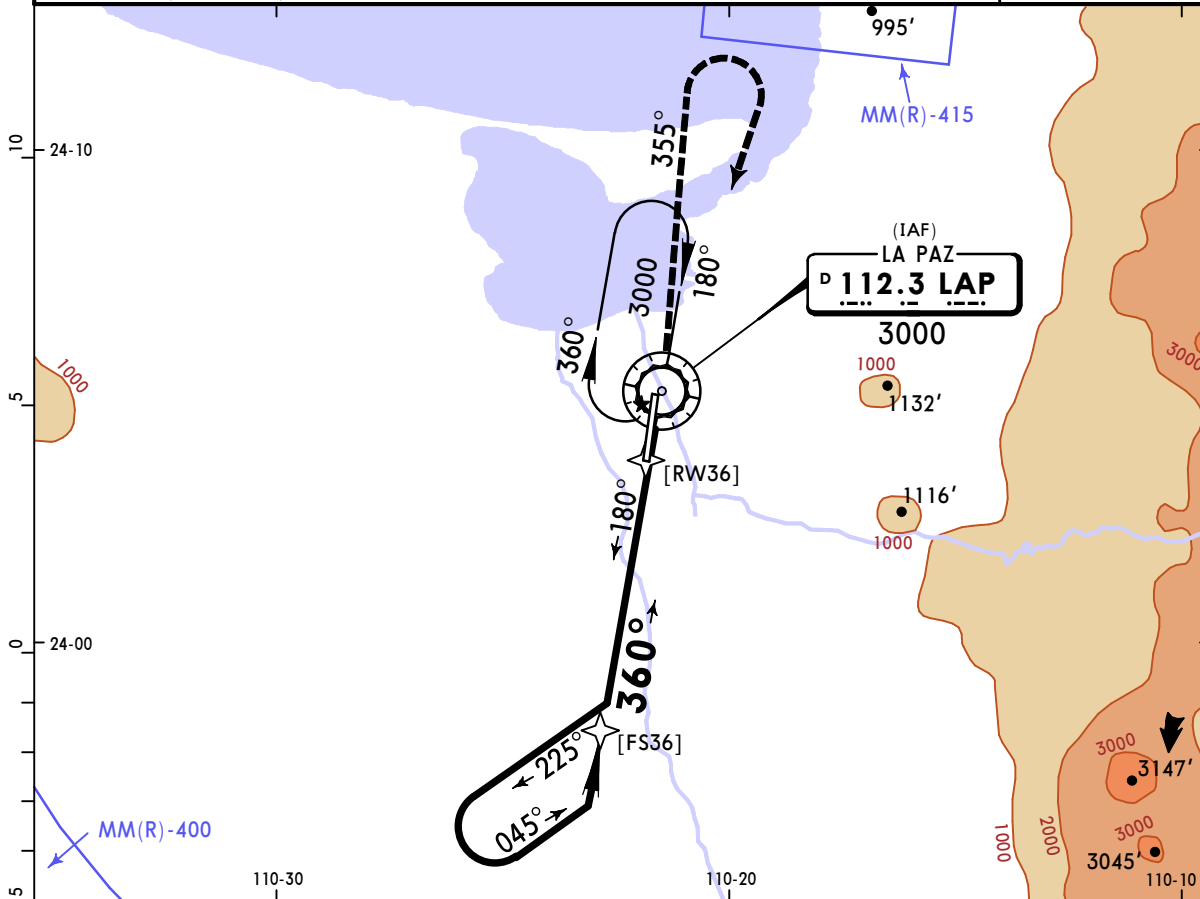
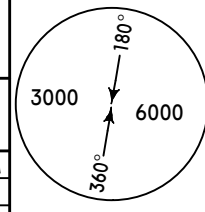
Gnd speed-Kts	70	90	100	120	140	160	REIL PAPI-L	via 112.3 R-355	D7.0	
Descent Angle	2.90°	359	462	513	616	718				821
MAP at D1.4										
FAF to MAP	4.5	3:51	3:00	2:42	2:15	1:56	1:41			

State	STRAIGHT-IN LANDING				CIRCLE-TO-LAND				
	MDA(H) 580' (508')				Max Kts	MDA(H)			
A	V1				90	680' (608')	V1	V1600m	
B	V1 1/2				120	680' (608')	V1 3/4	V2800m	
C	V1 3/4				140	680' (608')	V2	V3200m	
D	V2				165	680' (608')	V2	V3200m	

MMLP/LAP
GEN MANUEL MARQUEZ DE LEON INTL (13-6) 2 FEB 24

LA PAZ, MEXICO
VOR X Rwy 36

*ATIS 127.9		*LA PAZ Approach 120.6			*LA PAZ Tower 118.1																
VOR LAP 112.3	Final Apch Crs 360°	No FAF	MDA(H) 900' (828')	Apt Elev 72' Rwy 72'																	
MISSED APCH: Climb outbound via LAP VOR R-355, then turn RIGHT within 10 NM to LAP VOR at the minimum holding altitude.																					
MISSED APCH: Max Distance Outbound Track 7 NM																					
<table border="1"> <tr> <td>Gnd speed-Kts</td> <td>80</td> <td>100</td> <td>120</td> <td>140</td> <td>160</td> <td>180</td> <td>200</td> </tr> <tr> <td>Time</td> <td>5:15</td> <td>4:12</td> <td>3:30</td> <td>3:00</td> <td>2:38</td> <td>2:20</td> <td>2:06</td> </tr> </table>						Gnd speed-Kts	80	100	120	140	160	180	200	Time	5:15	4:12	3:30	3:00	2:38	2:20	2:06
Gnd speed-Kts	80	100	120	140	160	180	200														
Time	5:15	4:12	3:30	3:00	2:38	2:20	2:06														
Alt Set: IN (MB on req)		Trans level: FL 195		Trans alt: 18500'																	



Gnd speed-Kts	70	90	100	120	140	160	REIL PAPI-L	LAP via 112.3 R-355	RT within 10 NM	LAP 112.3
Descent Angle 3.20°	396	510	566	679	793	906				
MAP at VOR										

State	STRAIGHT-IN LANDING				CIRCLE-TO-LAND			
	MDA(H) 900' (828')				Max Kts	MDA(H)		
A	V1	V1600m		90	900' (828')	V1	V1600m	
B	V1 1/4	V2000m		120	900' (828')	V1 1/4	V2000m	
C	V2 1/2	V4000m		140	900' (828')	V2 1/2	V4000m	
D	V2 3/4	V4400m		165	900' (828')	V2 3/4	V4400m	

CHANGES: CAT D circling MDA.