

General Information

Location: IXTEPEC MEX
ICAO/IATA: MMIT / IZT
Lat/Long: N16° 27.0', W095° 05.6'
Elevation: 102 ft

Airport Use: Military
Daylight Savings: Not Observed
UTC Conversion: +6:00 = UTC
Magnetic Variation: 4.0° E

Fuel Types: Jet A
Customs: No
Airport Type: IFR
Landing Fee: No
Control Tower: Yes
Jet Start Unit: No
LLWS Alert: No
Beacon: Yes

Sunrise: 1216 Z
Sunset: 2354 Z

Runway Information

Runway: 18
Length x Width: 7621 ft x 197 ft
Surface Type: concrete
TDZ-Elev: 102 ft
Lighting: Edge
Stopway: 197 ft

Runway: 36
Length x Width: 7621 ft x 197 ft
Surface Type: concrete
TDZ-Elev: 88 ft
Lighting: Edge, ALS
Stopway: 197 ft

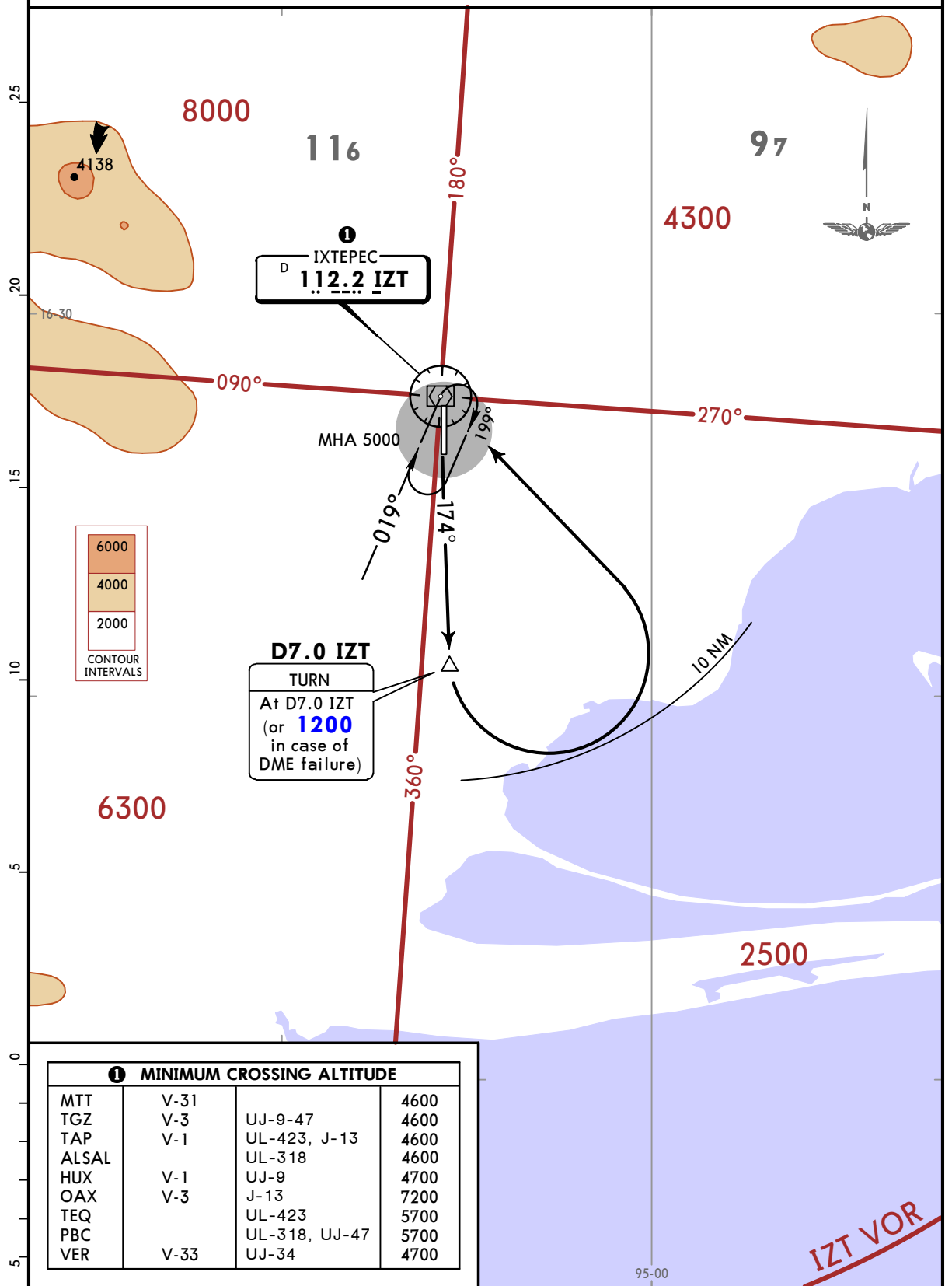
Communication Information

Ixtepec Tower: 118.450
Ixtepec Ground: 121.700

MMIT
MIL AIR BASE NO 2
GEN ANTONIO CARDENAS RODRIQUEZ **JEPPESEN** **IXTEPEC, MEXICO**
(10-3) 7 APR 17 **SID**

Apt Elev 101 Trans alt: 18500

IXTEPEC 1A (IZT1A) DEPARTURE
(RWY 18)



① MINIMUM CROSSING ALTITUDE			
MTT	V-31		4600
TGZ	V-3	UJ-9-47	4600
TAP	V-1	UL-423, J-13	4600
ALSAL		UL-318	4600
HUX	V-1	UJ-9	4700
OAX	V-3	J-13	7200
TEQ		UL-423	5700
PBC		UL-318, UJ-47	5700
VER	V-33	UJ-34	4700

INITIAL CLIMB
 Climb via IZT R174 to D7.0 IZT (or 1200 in case of DME failure), then turn LEFT within 10 NM to IZT VOR. Cross IZT VOR according to the minimum crossing altitude ① or ATC instructions.

MMIT
 MIL AIR BASE NO 2
 GEN ANTONIO CARDENAS RODRIQUEZ

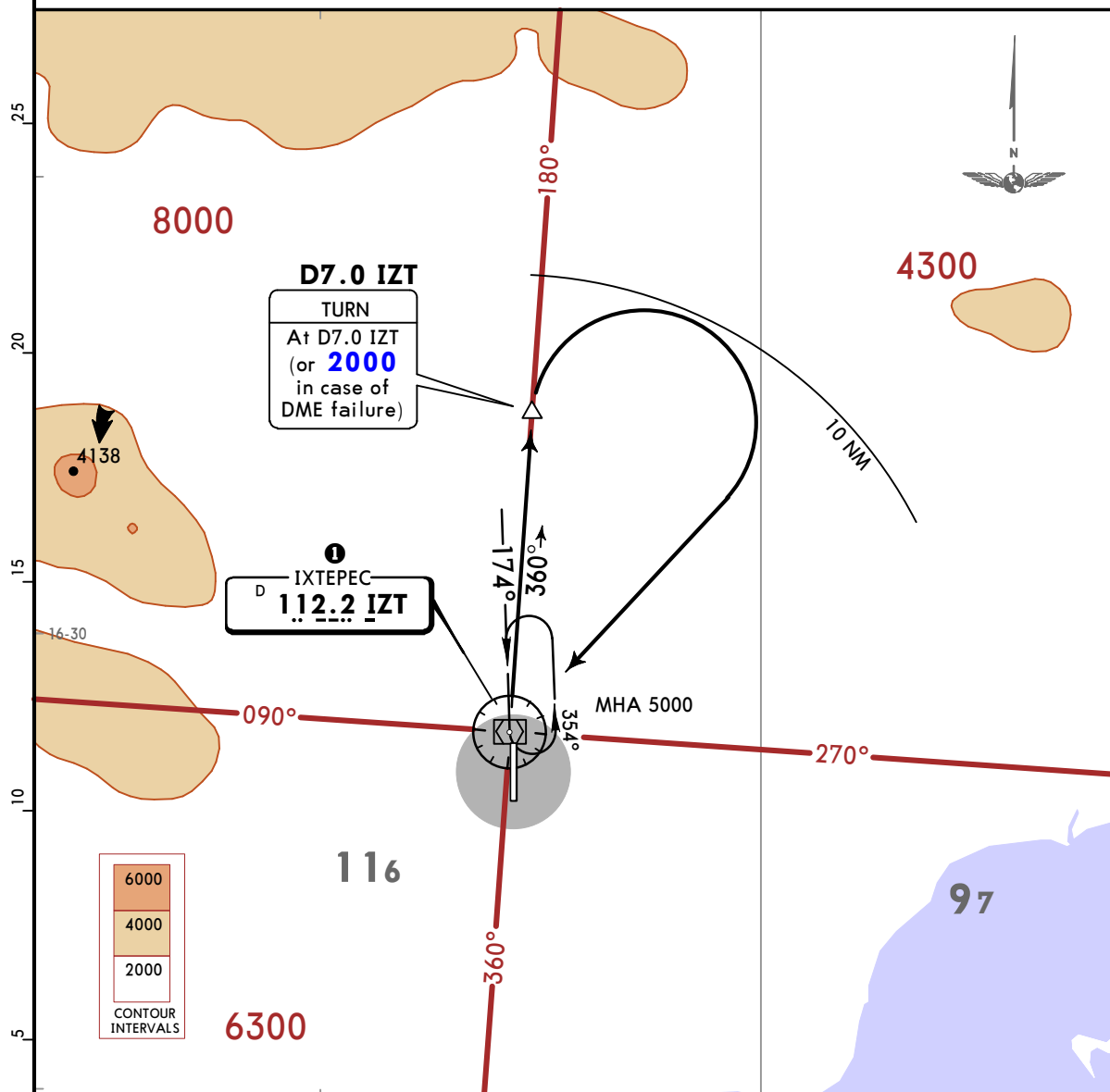
JEPPesen
 (10-3A) 7 APR 17

IXTEPEC, MEXICO

SID

Apt Elev 101 Trans alt: 18500

**IXTEPEC 1B (IZT1B) DEPARTURE
 (RWY 36)**



D7.0 IZT
 TURN
 At D7.0 IZT
 (or **2000**
 in case of
 DME failure)

IXTEPEC
112.2 IZT

6000
 4000
 2000
 CONTOUR
 INTERVALS

① MINIMUM CROSSING ALTITUDE			
MTT	V-31		4600
TGZ	V-3	UJ-9-47	4600
TAP	V-1	UL-423, J-13	4600
ALSAL		UL-318	4600
HUX	V-1	UJ-9	4700
OAX	V-3	J-13	7200
TEQ		UL-423	5700
PBC		UL-318, UJ-47	5700
VER	V-33	UJ-34	4700

This SID requires a minimum climb gradient of 260 per NM (4.27%) to 5000.

Gnd speed-KT	75	100	150	200	250	300
260 per NM	325	433	650	867	1083	1300

INITIAL CLIMB

Climb via IZT R360 to D7.0 IZT (or 2000 in case of DME failure), then turn RIGHT within 10 NM to IZT VOR. Cross IZT VOR according to the minimum crossing altitude ① or ATC instructions.

MMIT

Apt Elev **102'**
N16 27.0 W095 05.6

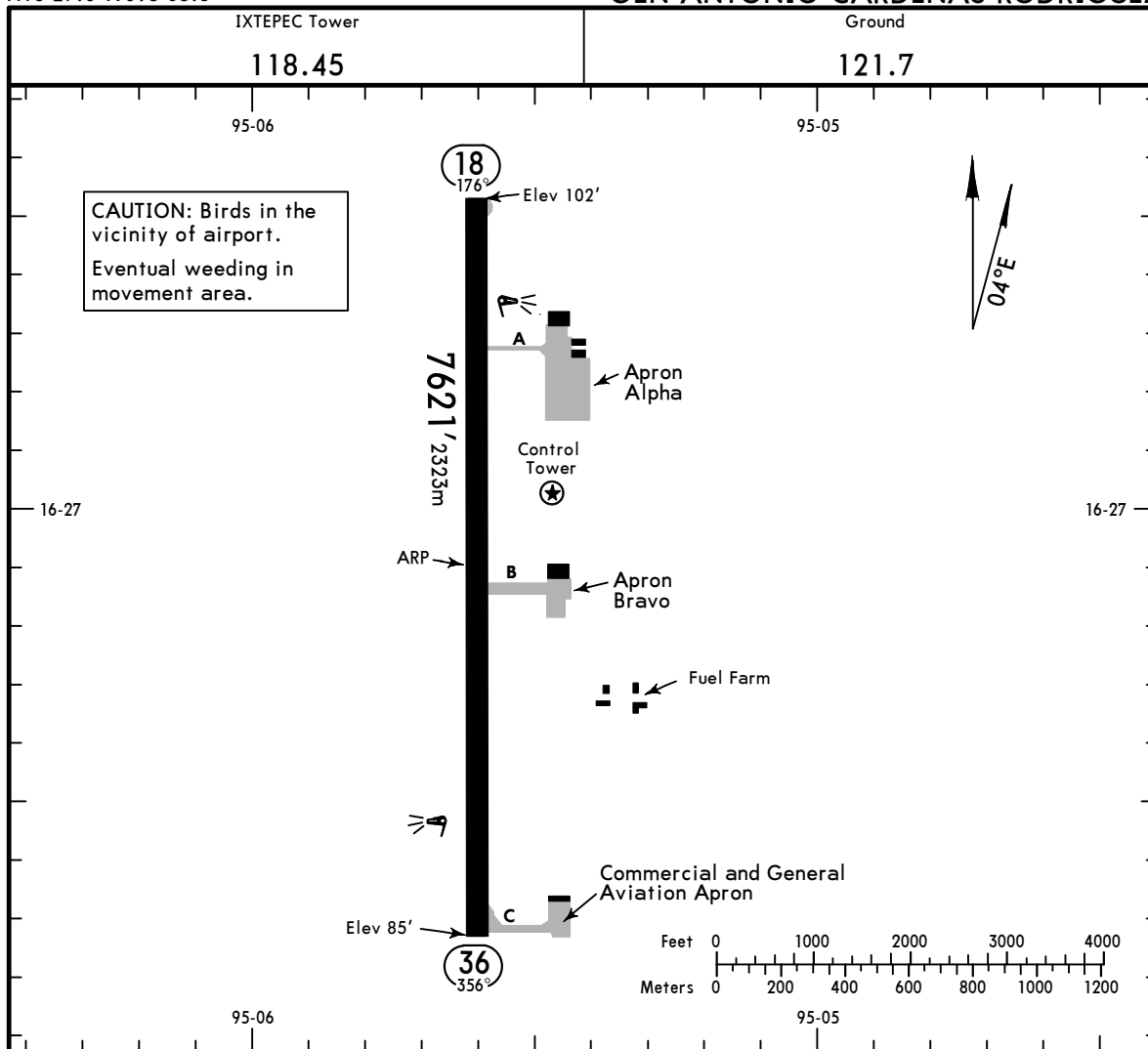
JEPPESEN

26 JAN 18
Eff 1 Feb **(10-9)**

IXTEPEC, MEXICO

MIL AIR BASE NO 2

GEN ANTONIO CARDENAS RODRIGUEZ



ADDITIONAL RUNWAY INFORMATION

RWY	Landing Aids	USABLE LENGTHS		TAKE-OFF	WIDTH
		Threshold	Glide Slope		
18	HIRL PAPI-L (angle 3.0°)				197'
36	HIRL SALS PAPI-L (angle 3.0°)				60m

TAKE-OFF

	Rwy 18	Rwy 36
1 & 2 Eng	300-1	900-2¾
3 & 4 Eng	300-½	

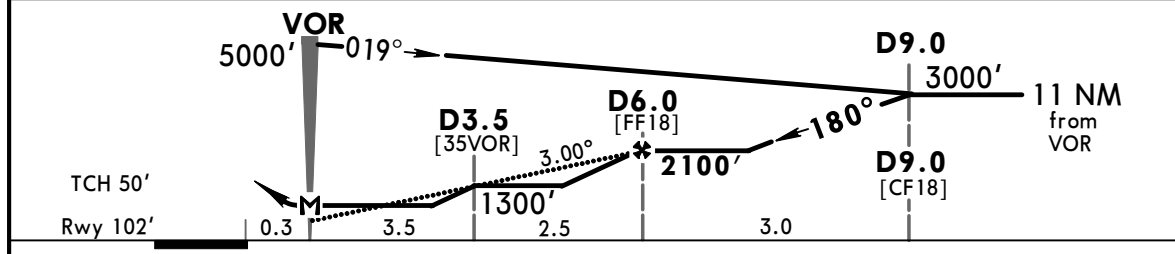
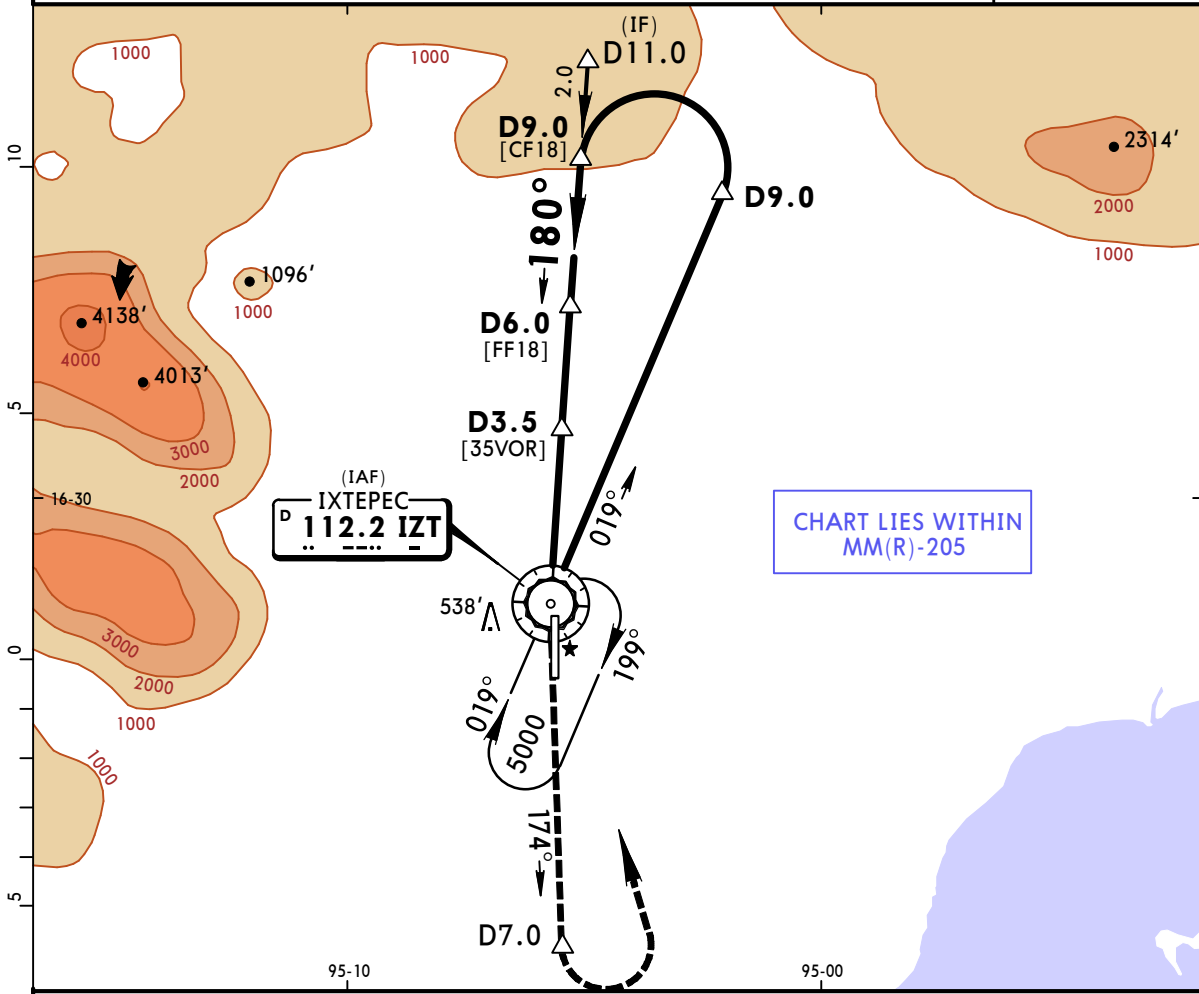
MMIT
MIL AIR BASE NO 2
GEN ANTONIO CARDENAS RODRIGUEZ

JEPPESSEN

IXTEPEC, MEXICO
VOR DME Rwy 18

(13-1) 10 AUG 18
Eff 16 Aug

IXTEPEC Tower 118.45					
VOR IZT 112.2	Final Apch Crs 180°	Minimum Alt D6.0 2100' (1998')	MDA(H) 520' (418')	Apt Elev 102' Rwy 102'	
MISSED APCH: Climb outbound via IZT VOR R-174, then turn LEFT within 10 NM to IZT VOR at the minimum holding altitude.					
Alt Set: MB (IN on req) Rwy Elev: 4 MB Trans level: By ATC Trans alt: 18500'					



Gnd speed-Kts	70	90	100	120	140	160	PAPI-L	↑ via 112.2 R-174	D7.0
Descent Angle 3.00°	372	478	531	637	743	849			
MAP at VOR									

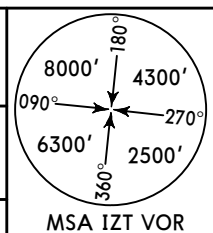
STRAIGHT-IN LANDING RWY 18			CIRCLE-TO-LAND		
MDA(H) 520' (418')			MDA(H) _____		
A	1		Max Kts		
B	1		90	840' (738') -1	
C	1 1/4		120	840' (738') -2	
D	1 1/4		140	840' (738') -2	
			165	840' (738') -2 1/4	

MMIT
MIL AIR BASE NO 2
GEN ANTONIO CARDENAS RODRIGUEZ **13-2** **10 AUG 18**
Eff 16 Aug **IXTEPEC, MEXICO**
VOR DME Rwy 36

IXTEPEC Tower 118.45

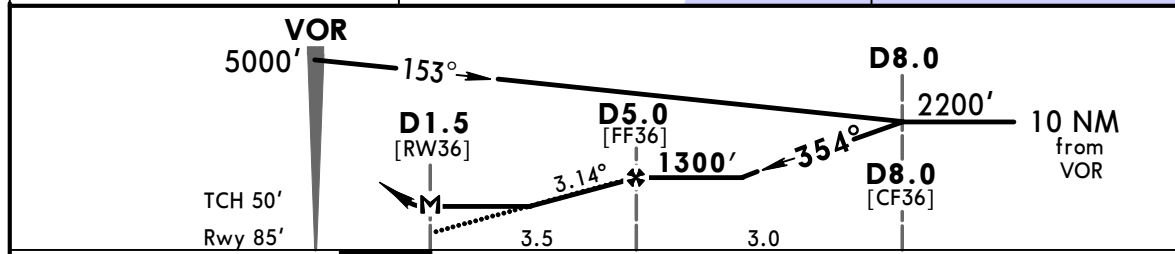
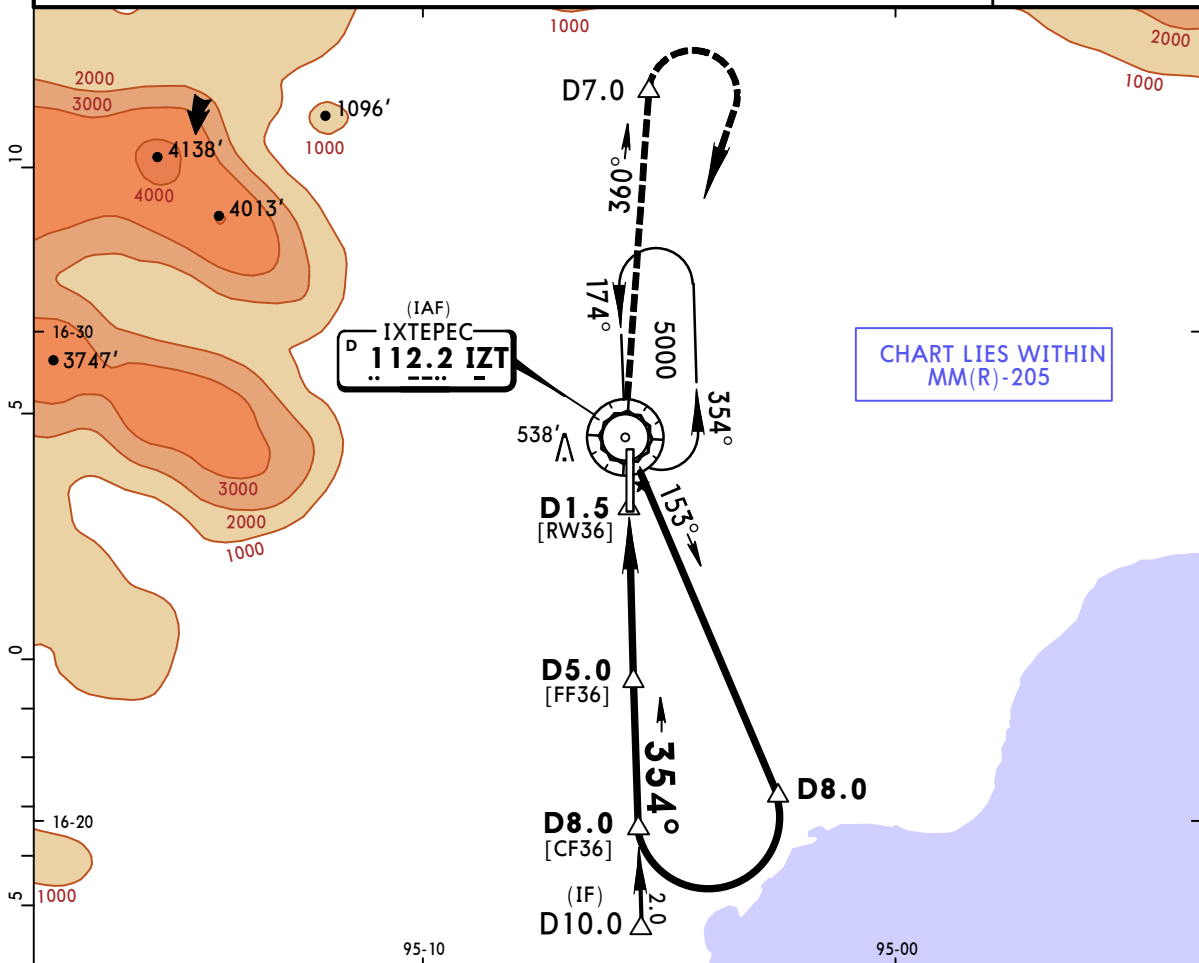
BRIEFING STRIP™

VOR IZT 112.2	Final Apch Crs 354°	Minimum Alt D5.0 1300' (1215')	MDA(H) 520' (435')	Apt Elev 102' Rwy 85'
----------------------------	----------------------------------	---	------------------------------	--------------------------



MISSED APCH: Climb outbound via IZT VOR R-360, then turn RIGHT within 10 NM to IZT VOR at the minimum holding altitude.

Alt Set: MB (IN on req) Rwy Elev: 3 MB Trans level: By ATC Trans alt: 18500'



Gnd speed-Kts	70	90	100	120	140	160
Descent Angle 3.14°	389	500	556	667	778	889
MAP at D1.5						

SALS PAPI-L	↑ via IZT 112.2	D7.0
	R-360	

STRAIGHT-IN LANDING RWY 36			CIRCLE-TO-LAND	
MDA(H) 520' (435')			Max Kts	MDA(H)
ALS out			90	
A	1		120	840' (738') -1
B			140	840' (738') -2
C	1¼		165	840' (738') -2¼
D	1½			