

General Information

Location: HERMOSILLO MEX
ICAO/IATA: MMHO / HMO
Lat/Long: N29° 05.7', W111° 02.9'
Elevation: 627 ft

Airport Use: Public
Daylight Savings: Not Observed
UTC Conversion: +7:00 = UTC
Magnetic Variation: 9.0° E

Fuel Types: 100-130 Octane, Jet A
Customs: Yes
Airport Type: IFR
Landing Fee: No
Control Tower: Yes
Jet Start Unit: No
LLWS Alert: No
Beacon: No

Sunrise: 1252 Z
Sunset: 0207 Z

Runway Information

Runway: 05
Length x Width: 7546 ft x 148 ft
Surface Type: asphalt
TDZ-Elev: 604 ft
Lighting: Edge

Runway: 23
Length x Width: 7546 ft x 148 ft
Surface Type: asphalt
TDZ-Elev: 627 ft
Lighting: Edge

Communication Information

ATIS: 127.700
Hermosillo Tower: 118.700
Hermosillo Approach: 121.400
Mazatlan Control ACC: 128.300 RCO
Hermosillo Information: 122.300

Mazatlan Control ACC: 124.400 RCO

Mazatlan Control ACC: 126.300 Remote Communications Air-Ground

Mazatlan Control ACC: 128.000 RCO

TMA

JEPPESSEN

18 AUG 23

10-1B

HERMOSILLO, MEXICO
GEN IGNACIO PESQUEIRA GARCIA INTL

*ATIS 127.7	*HERMOSILLO Approach 121.4
----------------	-------------------------------

SPEED RESTRICTIONS WITHIN MEXICO AIRSPACE

Maximum IAS unless otherwise depicted or authorized by ATC

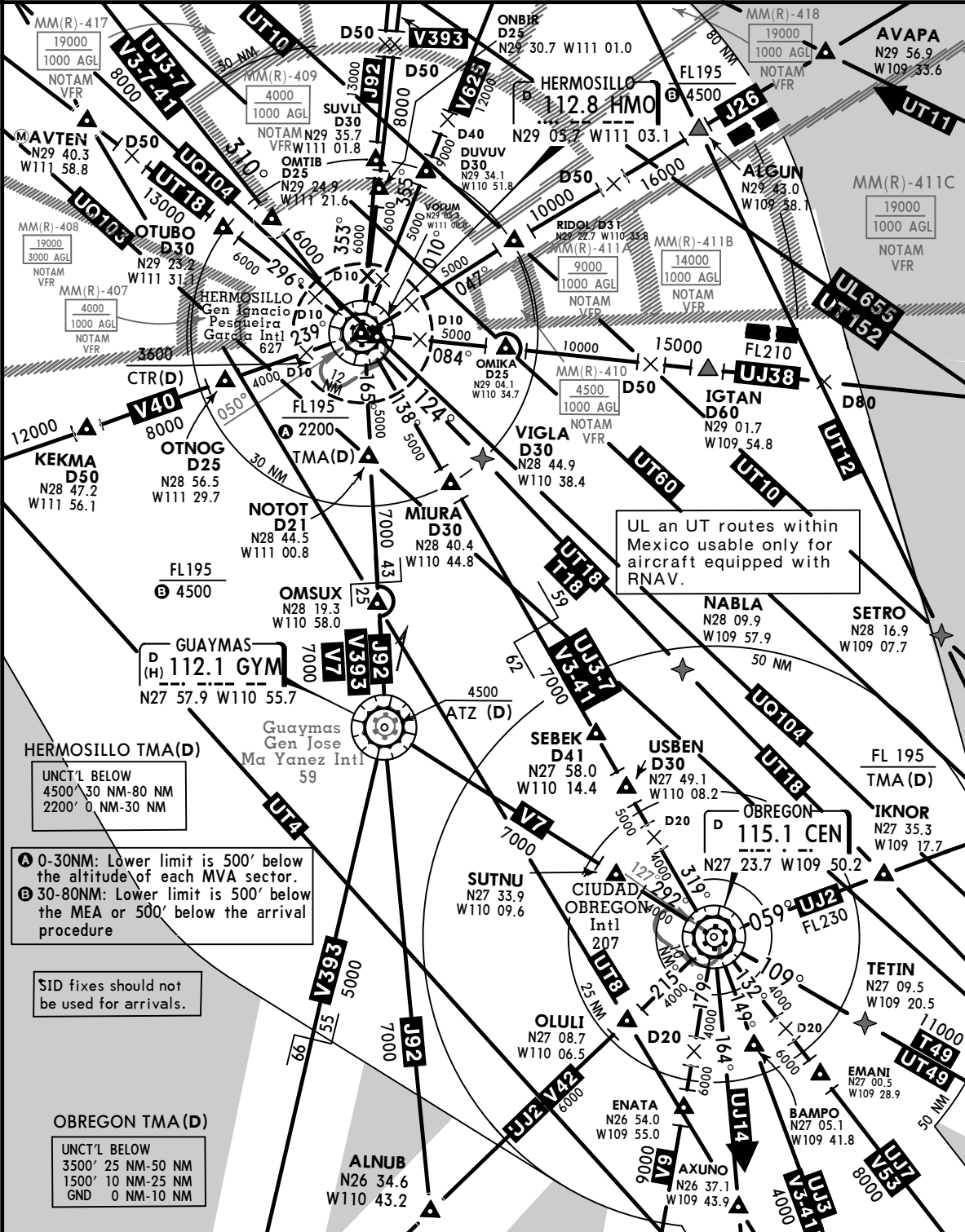
Below 3000' AGL within 10NM of any airport.....	200 KTS
Below 10000' MSL within Mexico airspace.....	250 KTS
Below 10000' AGL within 30NM of any airport.....	250 KTS

WITHIN HERMOSILLO TMA

At or below 3600' MSL within 10NM of HMO VORDME.....	200 KTS
At or below 10600' MSL within 30NM of HMO VORDME.....	250 KTS

WITHIN OBREGON TMA

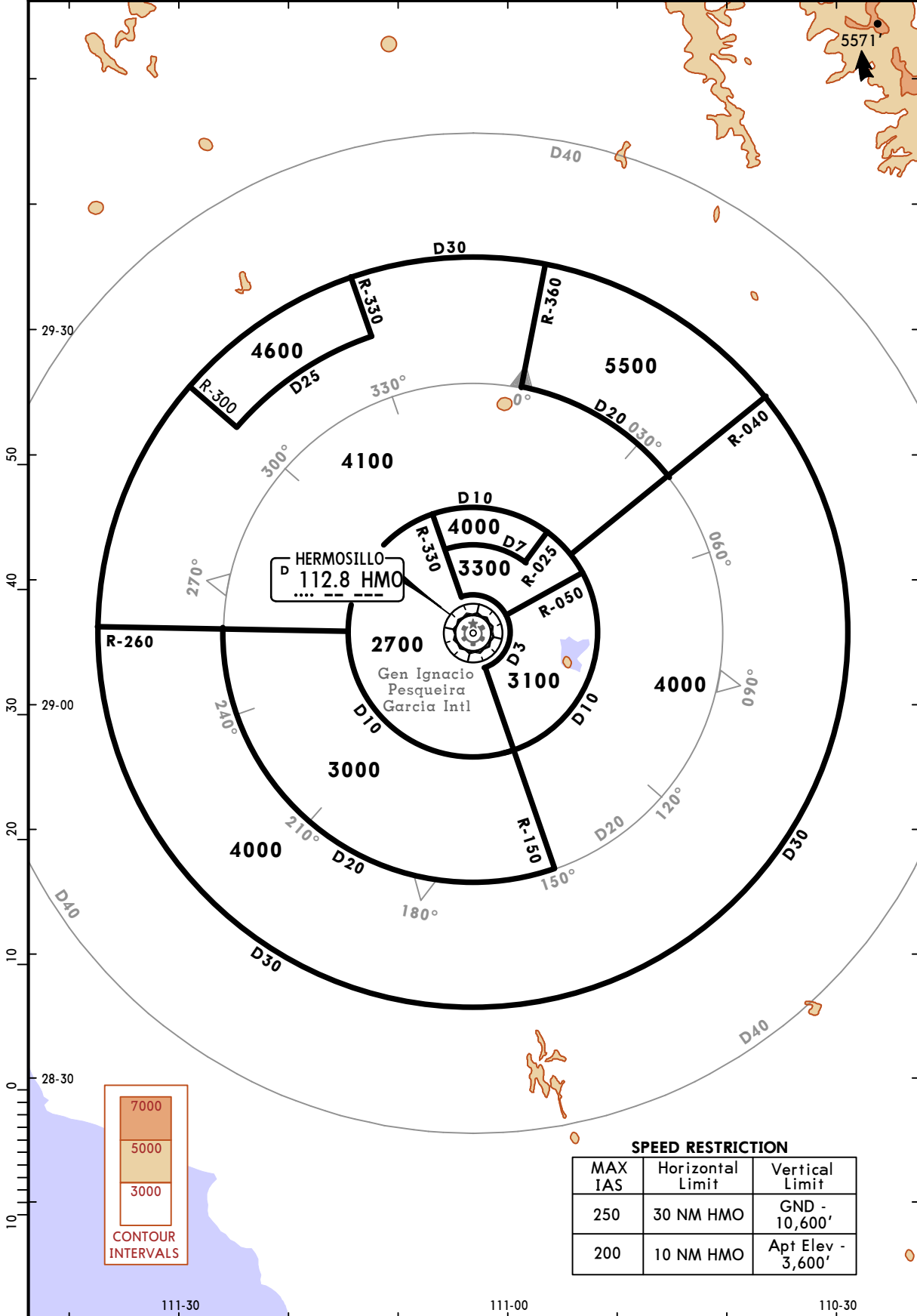
At or below 3200' MSL within 10NM of CEN VOR.....	200 KTS
At or below 10200' MSL within 30NM of CEN VOR.....	250 KTS



MMHO/HMO
GEN IGNACIO PESQUEIRA
GARCIA INTL

JEPPESEN HERMOSILLO, MEXICO
 29 DEC 17 **10-1R** **RADAR MINIMUM ALTITUDES**
 Eff 4 Jan

*HERMOSILLO Approach	Apt Elev	Alt Set: MB (IN on Req) Trans level: FL195 Trans alt: 18500'
121.4	627'	1. These are the lowest MVAs that can be assigned by the controller in a section when RADAR control procedures (vectors) are applied, without affecting routes and procedures with lower minimums. 2. All aircraft operating under VFR within this TMA should have transponder mode 3 A/C with 4096 code capabilities. 3. Exclusive use chart to verify assigned altitudes to identified aircraft.



7000
5000
3000

CONTOUR INTERVALS

SPEED RESTRICTION		
MAX IAS	Horizontal Limit	Vertical Limit
250	30 NM HMO	GND - 10,600'
200	10 NM HMO	Apt Elev - 3,600'

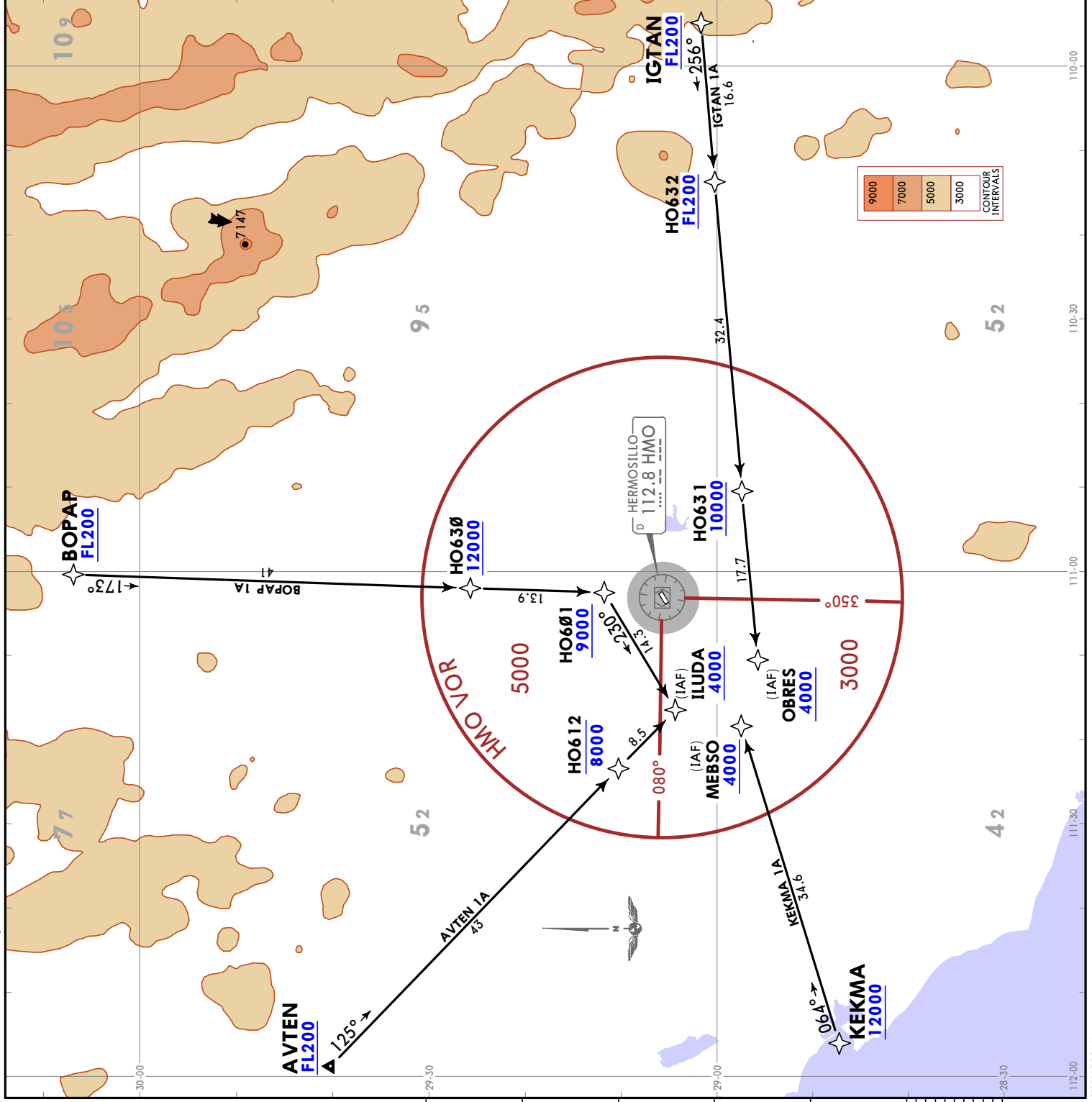
*ATIS 127.7 Apt Elev 627

Alt Set: IN (MB on req) Trans level: FL195
 1. RNAV 1.
 2. GNSS required.

AVTEN 1A (AVTEN1A) [AVTE1A]
 BOPAP 1A (BOPAP1A) [BOPA1A]
 IGTAN 1A (IGTAN1A) [IGTA1A]
 KEKMA 1A (KEKMA1A) [KEKM1A]
 RNAV ARRIVALS (RWY 05)

ROUTING

From AVTEN, BOPAP, IGTAN, or KEKMA continue to the waypoints, altitudes, and tracks shown to the corresponding IAF and continue on approach procedure or according to ATC instructions.



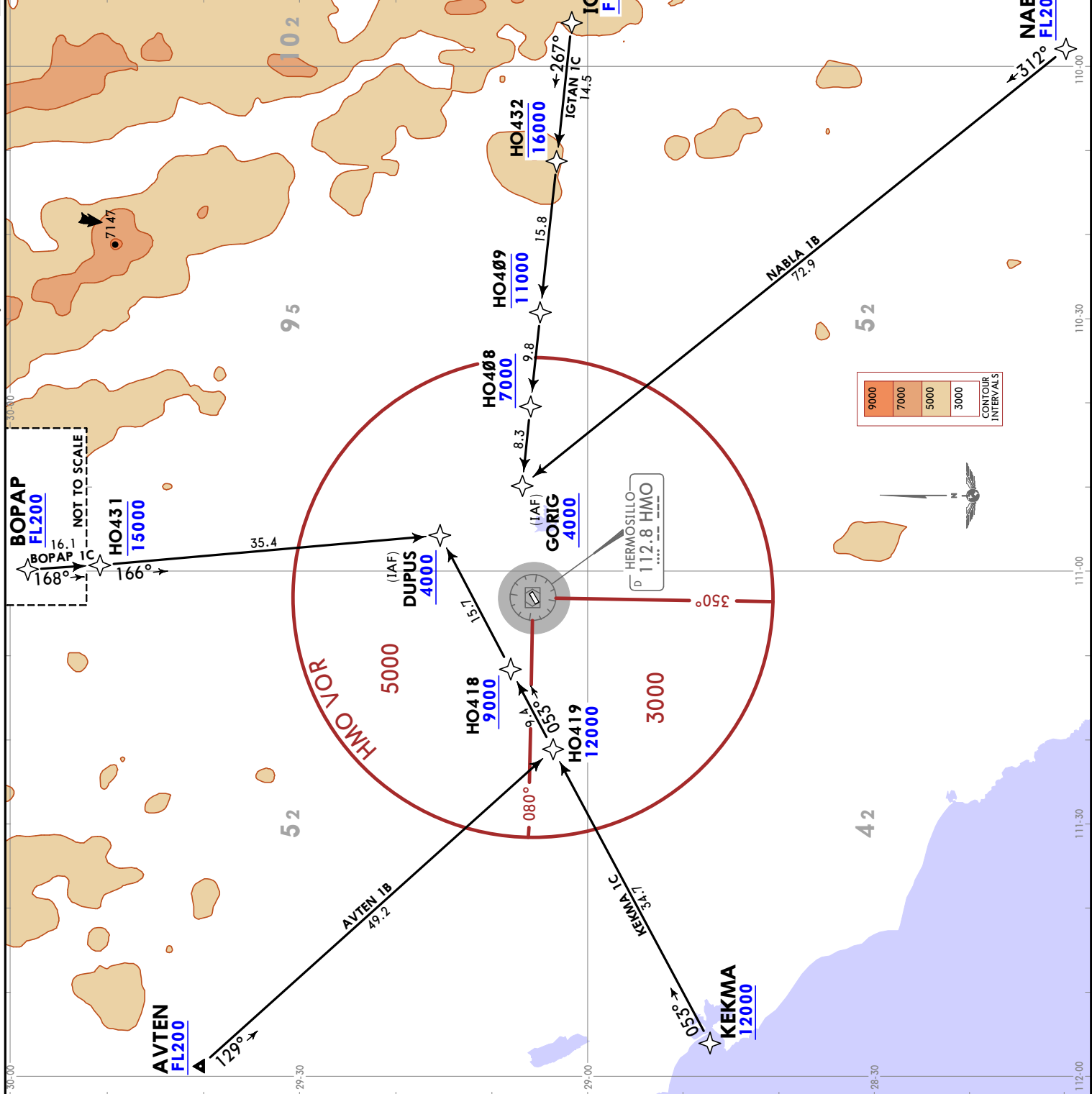
MMHO/HMO
 GEN IGNACIO
 PESQUEIRA GARCIA INTL

HERMOSILLO, MEXICO
 RNAV STAR

JEPPESEN
 22 JAN 21 (10-2A) Eff 28 Jan
 *ATIS
 127.7
 Apt Elev
 627
 Alt Set: IN (MB on req) Trans level: FL195
 1. RNAV 1.
 2. GNS required.

AVTEN 1B (AVTEN1B) [AVTE1B]
 BOPAP 1C (BOPAP1C) [BOPA1C]
 IGTAN 1C (IGTAN1C) [IGTA1C]
 KEKMA 1C (KEKMA1C) [KEKM1C]
 NABLA 1B (NABLA1B) [NABL1B]
 RNAV ARRIVALS
 (RWY 23)

ROUTING
 From AVTEN, BOPAP, IGTAN, KEKMA, or NABLA, continue to the waypoints, altitudes, and tracks shown to the corresponding IAF and continue on approach procedure or according to ATC instructions.



HERMOSILLO MEXICO
JEPESEN
 18 FEB 22 10-3 Eff 24 Feb
SID

Apt Elev 627
 Trans alt: 18500

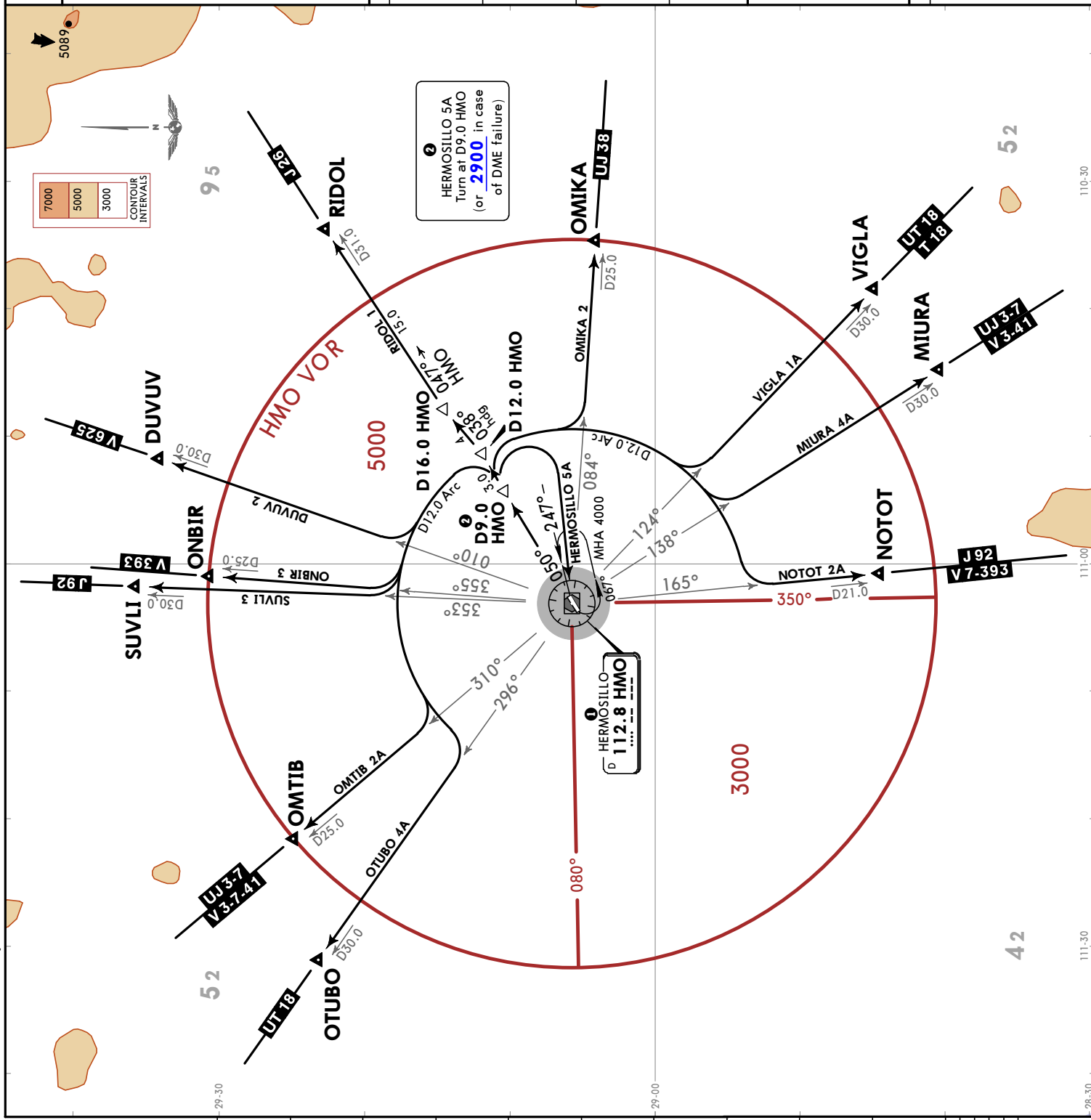
DUVUV 2 [DUVUV2] [DUVUV2]
 HERMOSILLO 5A [HMO5A] [HMO5A]
 MIURA 4A [MIURA4A] [MIUR4A]
 NOTOT 2A [NOTOT2A] [NOTO2A]
 OMIKA 2 [OMIKA2] [OMIKA2]
 OMTIB 2A [OMTIB2A] [OMTI2A]
 ONBIR 3 [ONBIR3] [ONBIR3]
 OTUBO 4A [OTUBO4A] [OTUB4A]
 RIDOL 1 [RIDOL1] [RIDOL1]
 SUVLI 3 [SUVLI3] [SUVLI3]
 VIGLA 1A [VIGLA1A] [VIGL1A]
 DEPARTURES (RWY 05)

SID	INITIAL CLIMB
DUVUV 2 OMTIB 2A ONBIR 3 OTUBO 4A SUVLI 3	Climb via HMO R050 to D9.0 HMO, turn LEFT and proceed on D12.0 Arc HMO to intercept the corresponding radial from HMO VOR to DUVUV, OMTIB, ONBIR, OTUBO or SUVLI and continue on the assigned route or ATC instructions.
HERMOSILLO 5A	Climb via HMO R050 to D9.0 HMO (or 2900 in case of DME failure), turn RIGHT within 12 NM to HMO VOR and depart according to the minimum crossing altitude ① of the assigned route or ATC instructions.
MIURA 4A NOTOT 2A OMIKA 2 VIGLA 1A	Climb via HMO R050 to D9.0 HMO, turn RIGHT and proceed on D12.0 Arc HMO to intercept the corresponding radial from HMO VOR to MIURA, NOTOT, OMIKA or VIGLA and continue on the assigned route or ATC instructions.
RIDOL 1	Climb via HMO R050 to D12.0 HMO, turn LEFT and proceed on heading 038° to intercept HMO R047 to RIDOL and continue on the assigned route or ATC instructions.

These SIDs require a minimum climb gradient of 280 per NM (4.6%) until crossing 7000.

Grnd speed-KT	75	100	150	200	250	300
280 per NM	350	467	700	933	1167	1400

① MINIMUM CROSSING ALTITUDE		
IMEXA	V-625	4000
CJS	J-26	4000
CUU	UJ-38	4000
NABAS	UT-18	3000
CEN	V-3-41	3500
GYM	V-7-393	4000
GRN	V-40	3000
TJN	UT-18	3000
PPE	V-3-7-41	3500
VYLLA	UJ-3-7	3500
AKACU	V-393	3500



MMHO/HMO
 GEN IGNACIO PESQUEIRA GARCIA INTL


JEPPESEN
 18 FEB 22 (10-3A) Eff 24 Feb
HERMOSILLO, MEXICO
SID

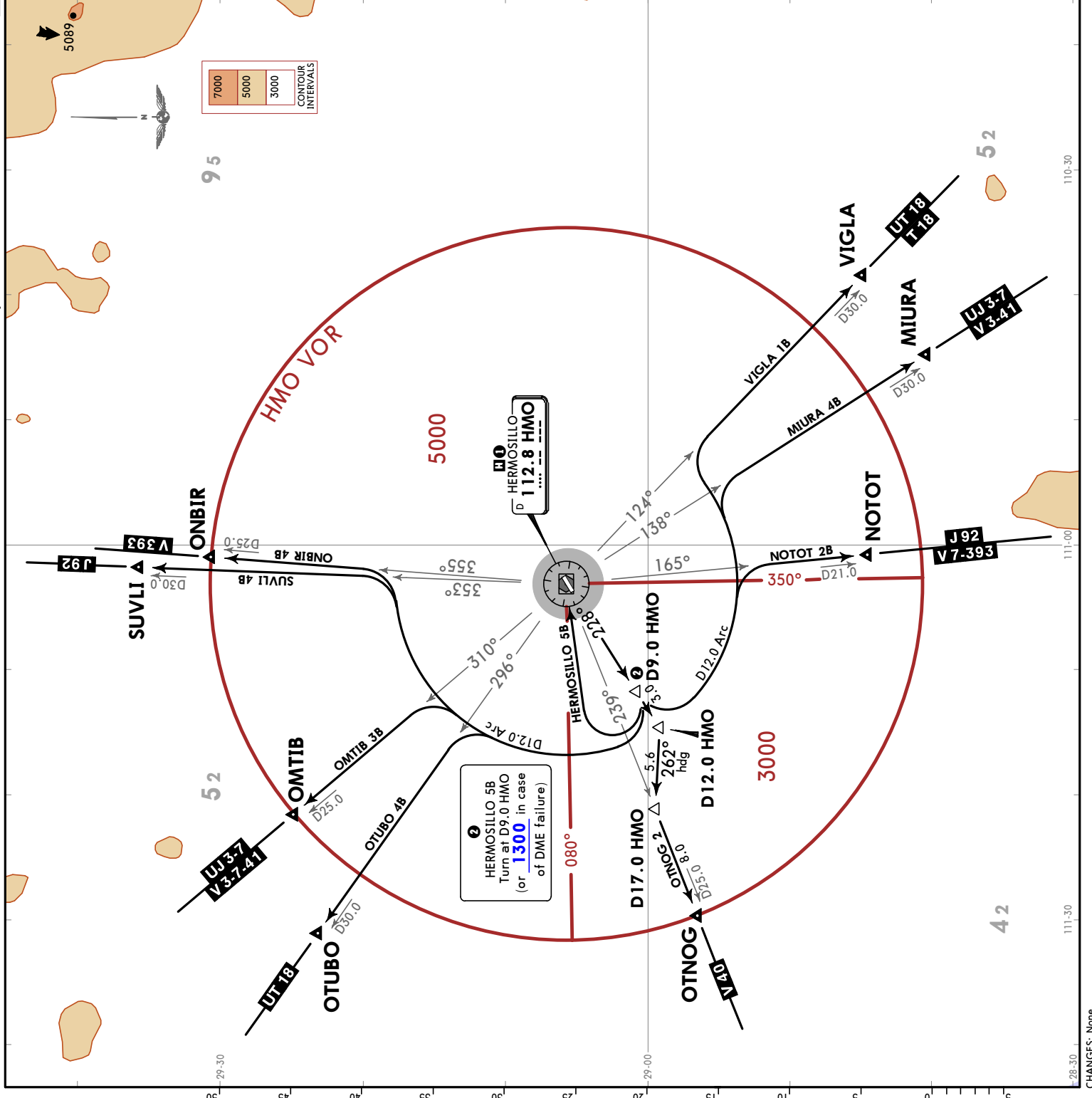
MMHO/HMO
 GEN IGNACIO
 PESQUEIRA GARCIA INTL

Apt Elev 627	Trans alt: 18500
-----------------	------------------

HERMOSILLO 5B (HMO5B) [HMO5B]
 MIURA 4B (MIURA4B) [MIUR4B]
 NOTOT 2B (NOTOT2B) [NOTO2B]
 OMTIB 3B (OMTIB3B) [OMTI3B]
 ONBIR 4B (ONBIR4B) [ONBI4B]
 OTNOG 2 (OTNOG2) [OTNOG2]
 OTUBO 4B (OTUBO4B) [OTUB4B]
 SUVLI 4B (SUVLI4B) [SUVL4B]
 VIGLA 1B (VIGLA1B) [VIGL1B]
DEPARTURES (RWY 23)

SID	INITIAL CLIMB
HERMOSILLO 5B	Climb via HMO R228 to D9.0 HMO (or 1300 in case of DME failure), turn RIGHT within 12 NM to HMO VOR and depart according to the minimum crossing altitude 1 of the assigned route or ATC instructions.
MIURA 4B NOTOT 2B VIGLA 1B	Climb via HMO R228 to D9.0 HMO, turn LEFT and proceed on D12.0 Arc HMO to intercept the corresponding radial from HMO VOR to MIURA, NOTOT or VIGLA and continue on the assigned route or ATC instructions.
OMTIB 3B ONBIR 4B OTUBO 4B SUVLI 4B	Climb via HMO R228 to D9.0 HMO, turn RIGHT and proceed on D12.0 Arc HMO to intercept the corresponding radial from HMO VOR to OMTIB, ONBIR, OTUBO or SUVLI and continue on the assigned route or ATC instructions.
OTNOG 2	Climb via HMO R228 to D12.0 HMO, turn RIGHT and proceed on heading 262° to intercept HMO R239 to OTNOG and continue on the assigned route or ATC instructions.

MINIMUM CROSSING ALTITUDE	
IMEXA	V-625
CJS	J-26
CUU	UI-38
NABAS	UI-18
CEN	VJ-3-41
GYM	V-7-393
GRN	V-40
TLJ	UI-18
PPE	V-3-7-41
VYLLA	UI-3-7
AKACU	V-393
HOLDING OVER HMO VOR 	



HERMOSILLO MEXICO
JEPPESEN
 4 SEP 20 (10-3B) Eff 10 Sep
RNAV SID

Apt Elev
627

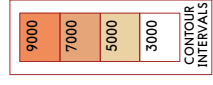
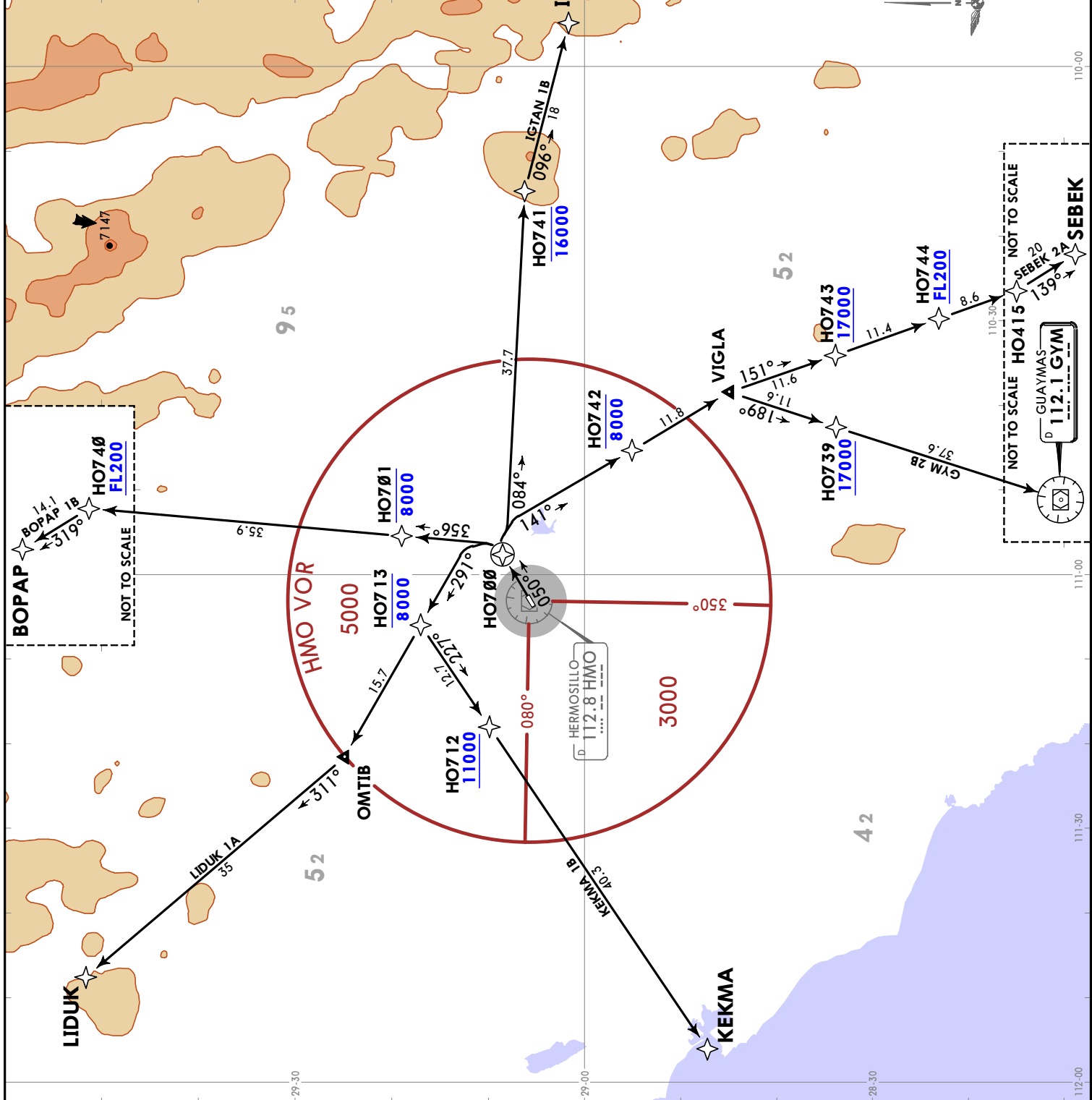
Trans alt: 18500
 1. RNAV 1.
 2. GNSS required.

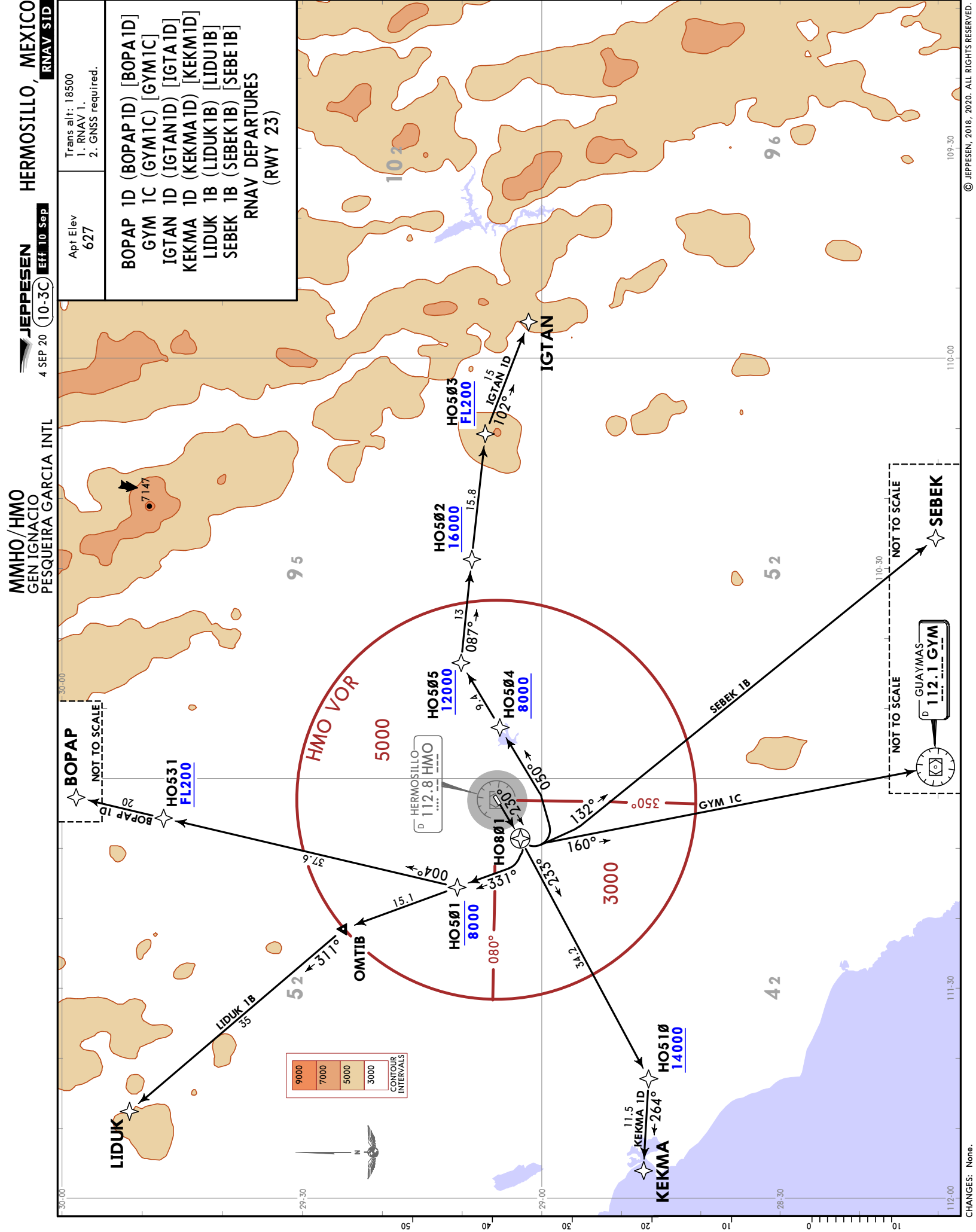
BOPAP 1B (BOPAP1B) [BOPA1B]
GYM 2B (GYM2B) [GYM2B]
IGTAN 1B (IGTAN1B) [IGTA1B]
KEKMA 1B (KEKMA1B) [KEKM1B]
LIDUK 1A (LIDUK1A) [LIDU1A]
SEBEK 2A (SEBEK2A) [SEBE2A]

RNAV DEPARTURES
(RWY 05)

These SIDs require a minimum climb gradient:
 BOPAP 1B, IGTAN 1B, KEKMA 1B, and LIDUK 1A:
 280 per NM (4.6%) until crossing 7000.

Grnd speed-KT	75	100	150	200	250	300
280 per NM	350	467	700	933	1167	1400





MMHO/HMO

JEPPESEN

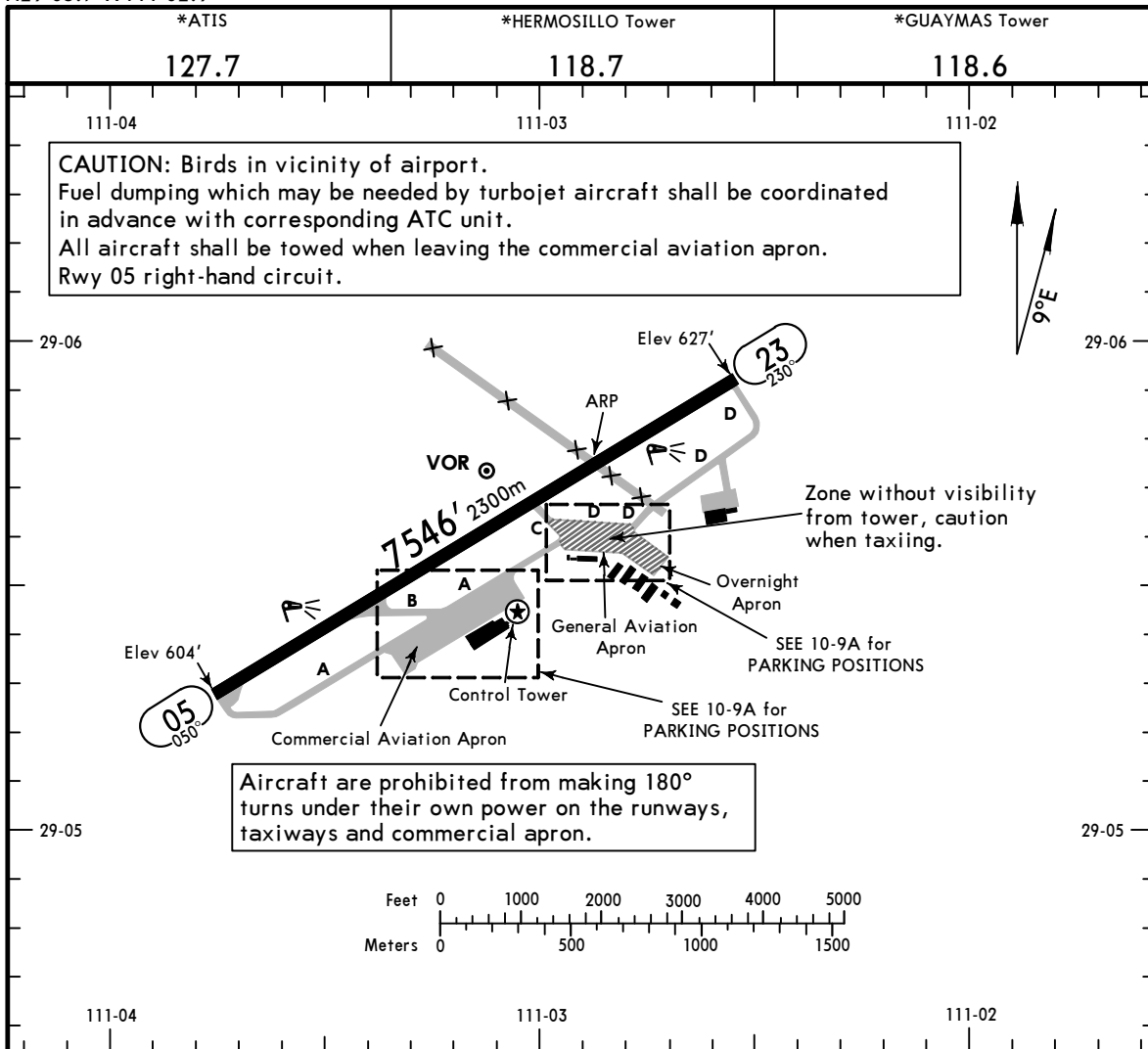
HERMOSILLO, MEXICO

Apt Elev **627'**
N29 05.7 W111 02.9

2 FEB 24

(10-9)

GEN IGNACIO PESQUEIRA GARCIA INTL



ADDITIONAL RUNWAY INFORMATION

RWY	USABLE LENGTHS	LANDING BEYOND	TAKE-OFF	WIDTH
05 23	HIRL PAPI-L (angle 3.0°)			148' 45m

TAKE-OFF & DEPARTURE PROCEDURE		FOR FILING AS ALTERNATE	
All Rwys			
1 & 2 Eng	700-1	A	1200-2
3 & 4 Eng		B	
	C		
	D		

DEPARTURE PROCEDURE: For departures and MCA's see Hermosillo 10-3 and 10-3A.

MMHO/HMO

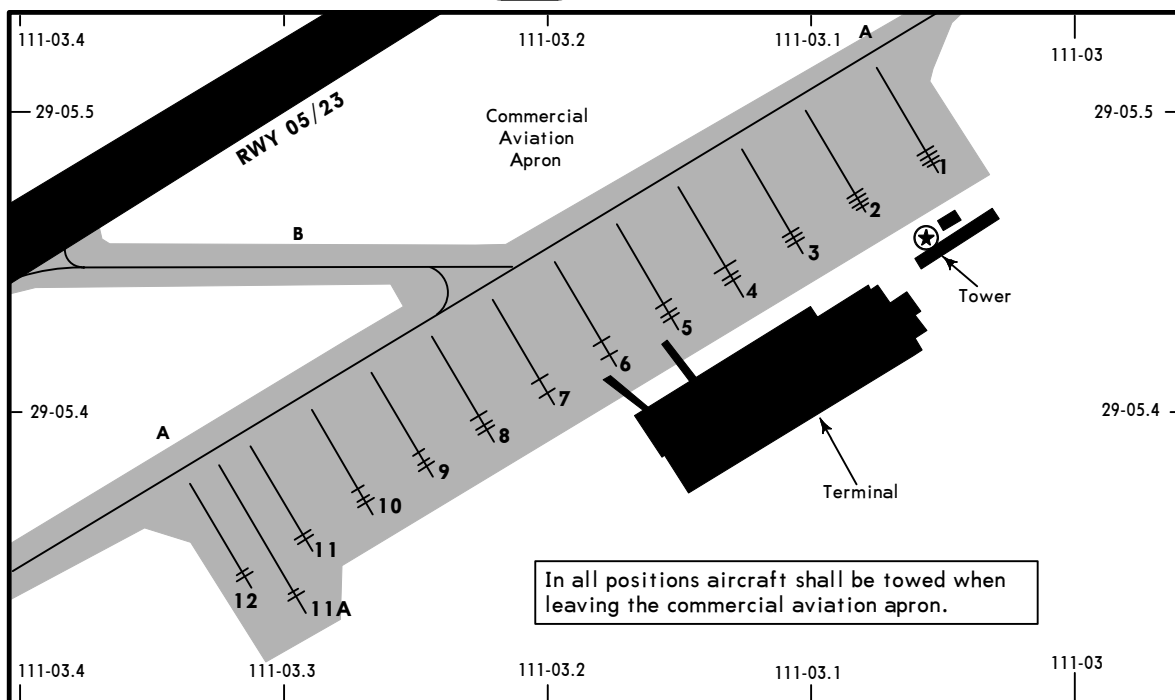
JEPPesen

HERMOSILLO, MEXICO

2 FEB 24

10-9A

GEN IGNACIO PESQUEIRA GARCIA INTL



In all positions aircraft shall be towed when leaving the commercial aviation apron.

COMMERCIAL PARKING POSITION COORDINATES

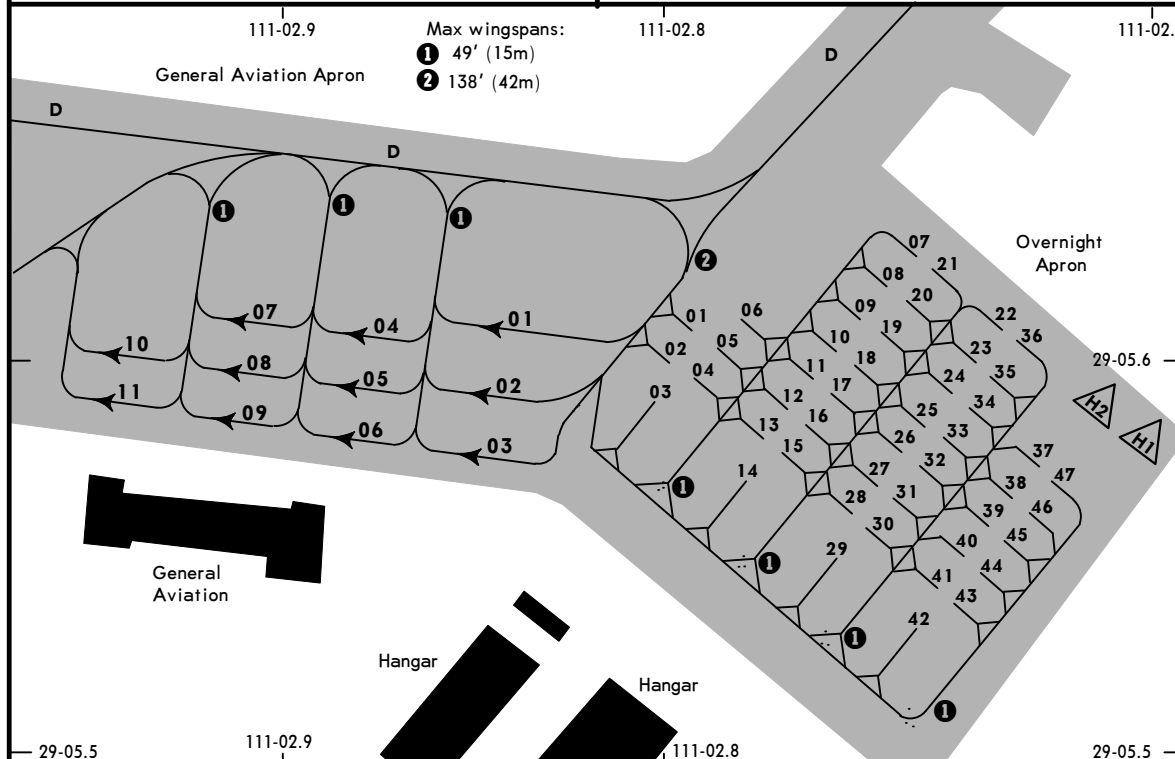
POSITION No.	COORDINATES
1, 2	N29 05.5 W111 03.1
3, 4	N29 05.4 W111 03.1
5 thru 9	N29 05.4 W111 03.2
10, 11	N29 05.4 W111 03.3
11A, 12	N29 05.3 W111 03.3

GENERAL AVIATION PARKING POSITION COORDINATES

POSITION No.	COORDINATES
01 thru 03	N29 05.6 W111 02.8
04 thru 11	N29 05.6 W111 02.9

OVERNIGHT PARKING POSITION COORDINATES

POSITION No.	COORDINATES
01 thru 06, 11 thru 16	N29 05.6 W111 02.8
07 thru 10, 17 thru 40, 45 thru 47, H1, H2	N29 05.6 W111 02.7
41 thru 44	N29 05.5 W111 02.7



MMHO/HMO

GEN IGNACIO PESQUEIRA GARCIA INTL



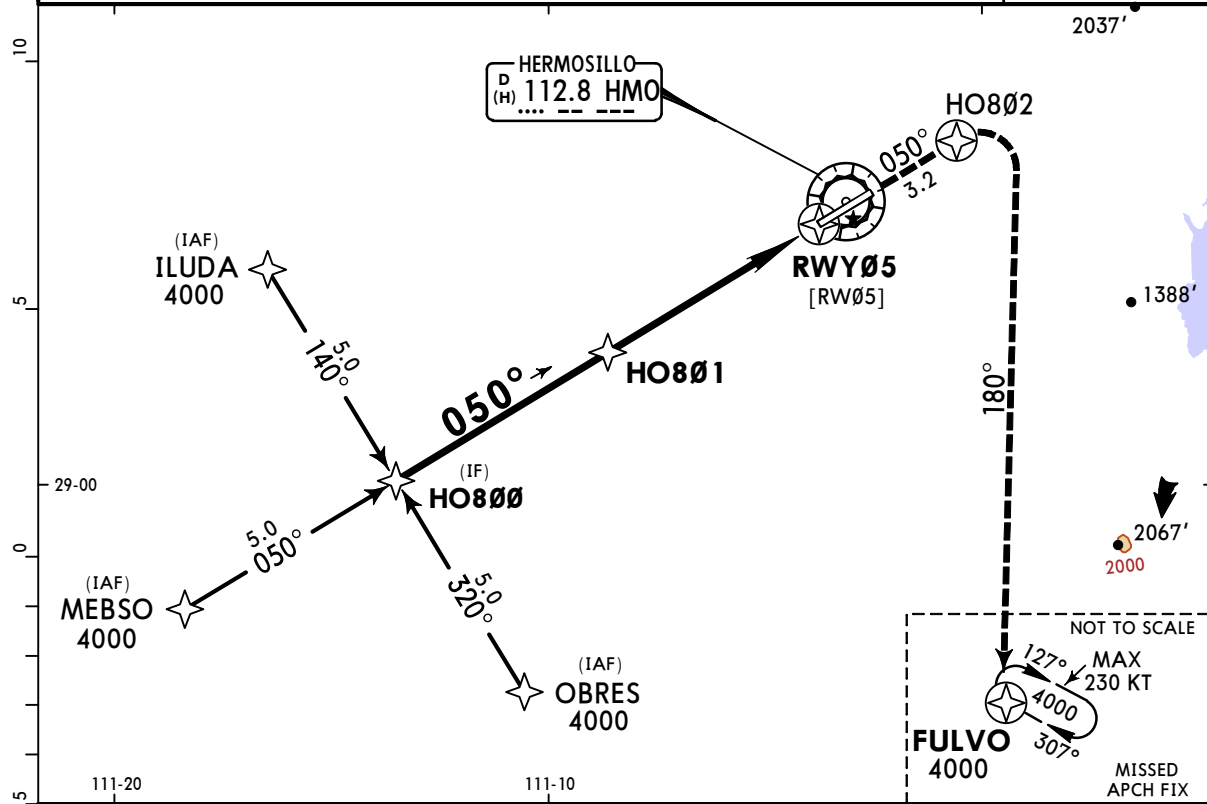
HERMOSILLO, MEXICO

RNP Rwy 05

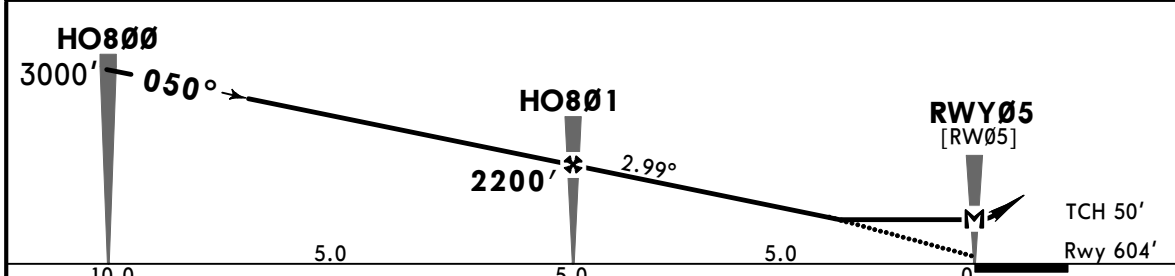
12-1

19 JAN 24
Eff 25 Jan

*ATIS 127.7		*HERMOSILLO Approach 121.4		*HERMOSILLO Tower 118.7		*GUAYMAS Tower 118.6	
RNAV	Final Apch Crs 050°	HO801 2200' (1596')	LNVA MDA(H) 1100' (496')	Apt Elev 627' Rwy 604'			
MISSED APCH: Climb on track 050° to HO802 and proceed to FULVO at minimum holding altitude or according to ATC instructions.							
Alt Set: IN (MB on req)		Trans level: FL195		Trans alt: 18500'			
RNP Apch							
GNSS required.							



DIST to THR	4.0	3.0	2.0
ALTITUDE	1930'	1610'	1290'



Gnd speed-Kts	70	90	100	120	140	160	PAPI-L	↑ on 050° track
Descent Angle 2.99°	370	476	529	635	741	846		
MAP at RWY05								
FAF to MAP	5.0	4:17	3:20	3:00	2:30	2:09	1:53	

STRAIGHT-IN LANDING RWY 05			CIRCLE-TO-LAND	
	LNVA/VNVA	LNVA MDA(H) 1100' (496')	Max Kts	MDA(H)
A	NOT APPLICABLE		90	1160' (533') -1
B			120	
C			140	1540' (913') -2¾
D			165	1780' (1153') -3

MMHO/HMO

GEN IGNACIO PESQUEIRA GARCIA INTL

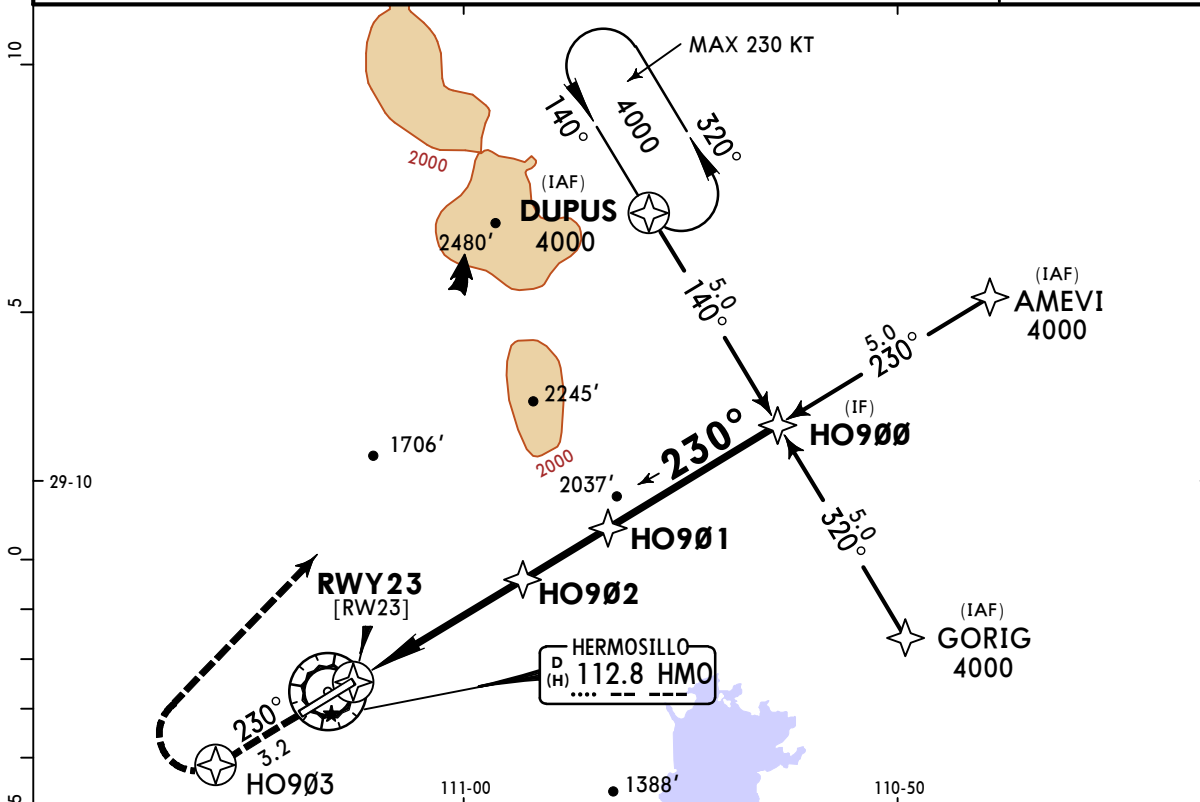


12-2 19 JAN 24
Eff 25 Jan

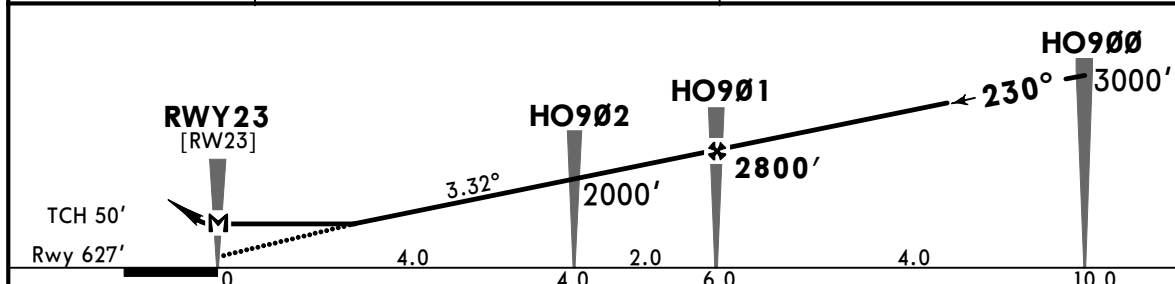
HERMOSILLO, MEXICO

RNP Rwy 23

*ATIS 127.7		*HERMOSILLO Approach 121.4		*HERMOSILLO Tower 118.7		*GUAYMAS Tower 118.6			
RNAV	Final Apch Crs 230°	HO901 2800' (2173')	LNNAV MDA(H) 1100' (473')	Apt Elev 627' Rwy 627'					
MISSED APCH: Climb on track 230° to HO903 and proceed to DUPUS at minimum holding altitude or according to ATC instructions.									
Alt Set: IN (MB on req)		Trans level: FL195		Trans alt: 18500'					
RNP Apch		GNSS required.							



DIST to THR	2.0	3.0
ALTITUDE	1380'	1740'

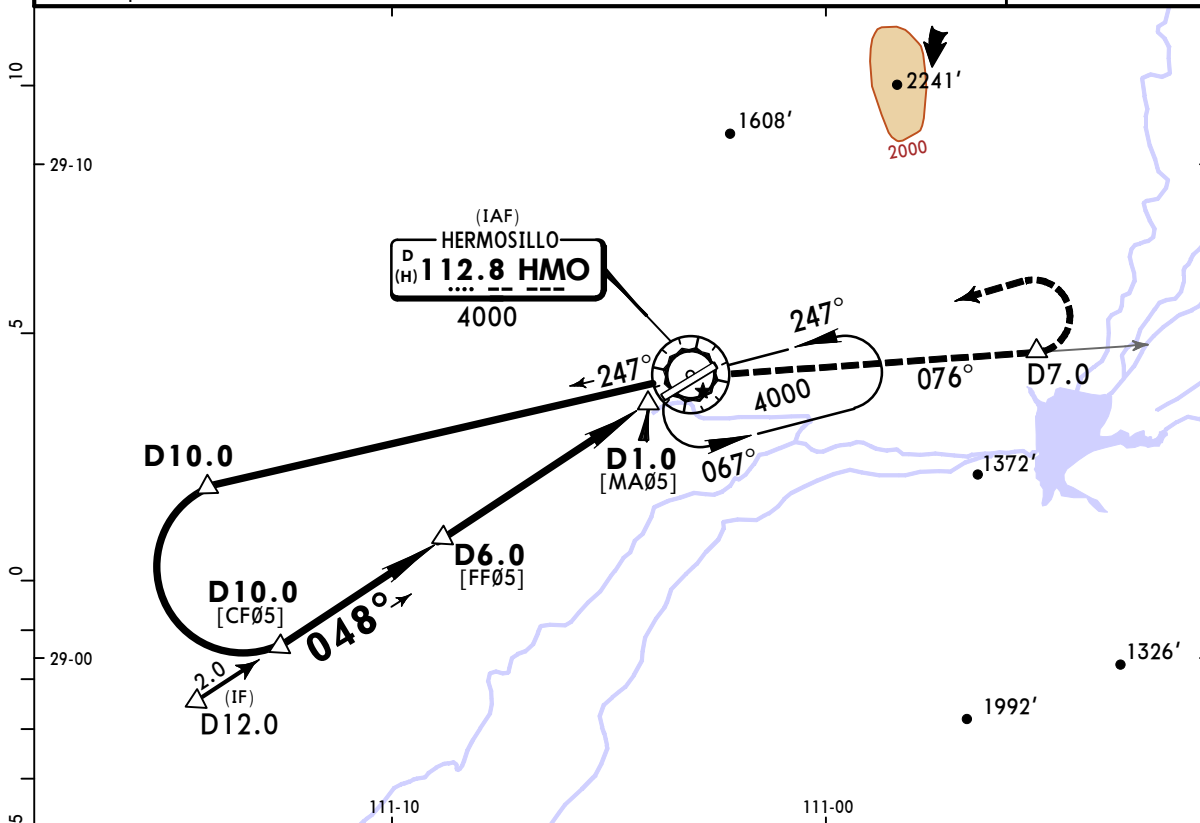


Gnd speed-Kts	70	90	100	120	140	160	PAPI-L	↑ on 230° track
Descent Angle 3.32°	411	529	587	705	822	940		
MAP at RWY23	6.0	5:09	4:00	3:36	3:00	2:34		

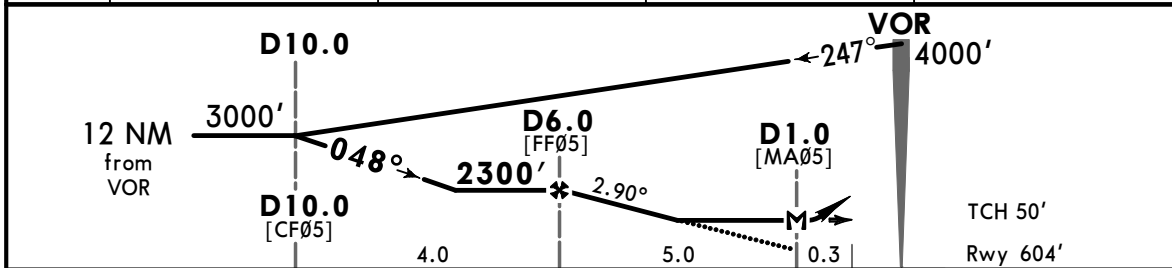
STRAIGHT-IN LANDING RWY 23			CIRCLE-TO-LAND		
LNNAV/VNAV		LNNAV	MDA(H) 1100' (473')		Max Kts
A	NOT APPLICABLE	1	90	1160' (533') -1	
B		1 1/4	120	1540' (913') -2 3/4	
C		1 1/2	140	1780' (1153') -3	
D			165		

MMHO/HMO **JEPPESEN** **HERMOSILLO, MEXICO**
 GEN IGNACIO PESQUEIRA GARCIA INTL **13-1** 19 JAN 24 **VOR Z Rwy 05**
 Eff 25 Jan

*ATIS 127.7	*HERMOSILLO Approach 121.4	*HERMOSILLO Tower 118.7	*GUAYMAS Tower 118.6	
VOR HMO 112.8	Final Apch Crs 048°	D6.0 2300'(1696')	MDA(H) 1100'(496')	
Apt Elev 627' Rwy 604'				
MISSED APCH: Turn RIGHT and proceed outbound on HMO VOR R-076 to D7.0, turn LEFT within 10 NM to HMO VOR at the minimum holding altitude.				
Alt Set: IN (MB on req)		Trans level: FL195		Trans alt: 18500'
DME required.				



HMO DME	6.0	5.0	4.0	3.0
ALTITUDE	2300'	1990'	1680'	1370'



Gnd speed-Kts	70	90	100	120	140	160			
Descent Angle 2.90°	359	462	513	616	718	821			
MAP at D1.0									
D6.0 to MAP	5.0	4:17	3:20	3:00	2:30	2:09	1:53		

STRAIGHT-IN LANDING RWY 05				CIRCLE-TO-LAND			
MDA(H) 1100' (496')				MDA(H)			
A	1			Max Kts	90		
B	1			120	1160' (533') - 1		
C	1 1/4			140	1540' (913') - 2 3/4		
D	1 1/2			165	1780' (1153') - 3		

MMHO/HMO

GEN IGNACIO PESQUEIRA GARCIA INTL

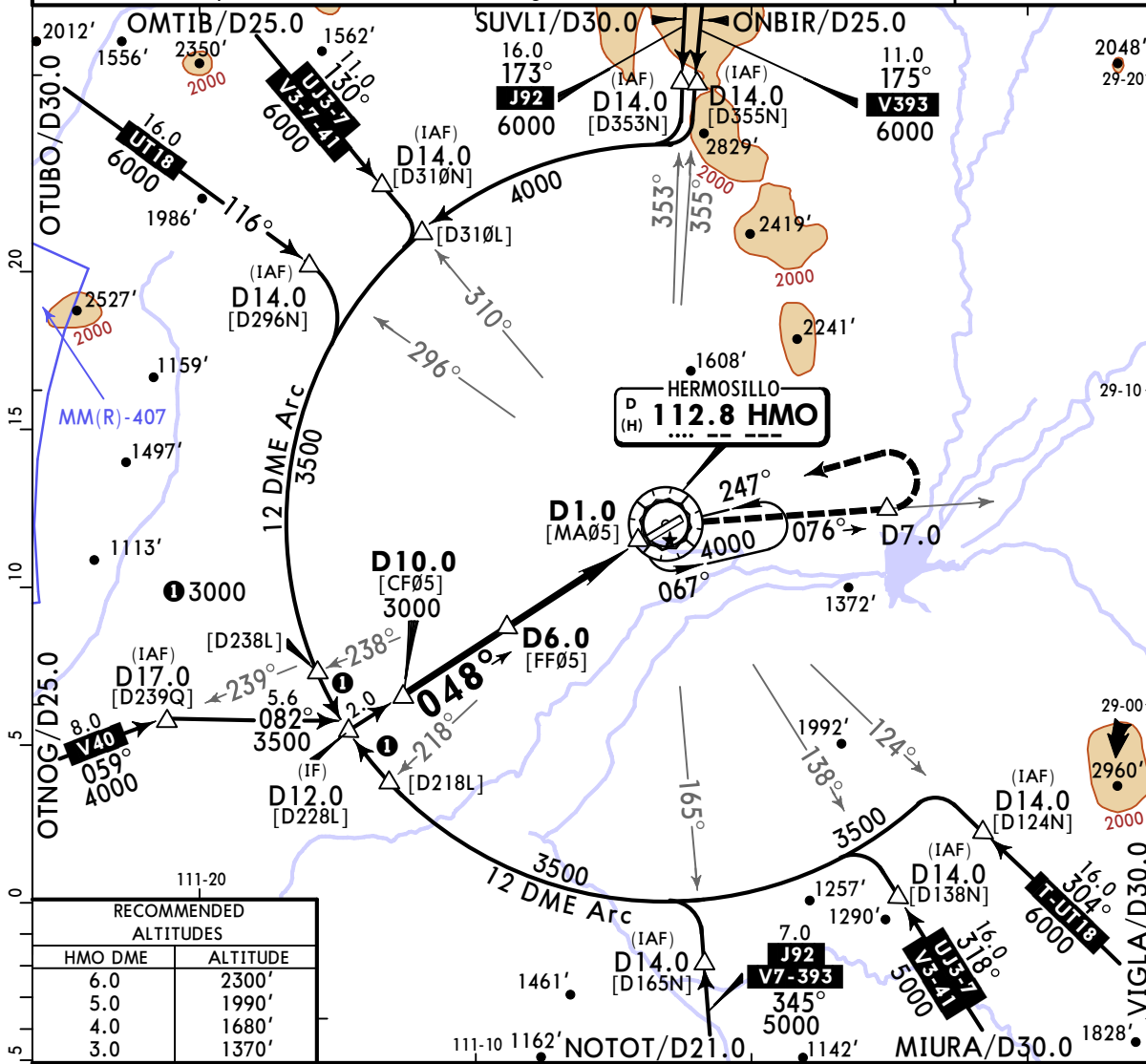
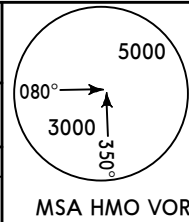


13-2 19 JAN 24
Eff 25 Jan

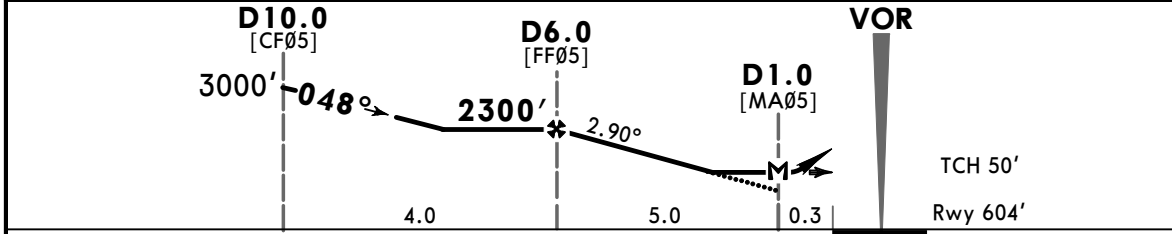
HERMOSILLO, MEXICO

VOR Y Rwy 05

*ATIS 127.7	*HERMOSILLO Approach 121.4		*HERMOSILLO Tower 118.7		*GUAYMAS Tower 118.6
VOR HMO 112.8	Final Apch Crs 048°	D6.0 2300' (1696')	MDA(H) 1100' (496')	Apt Elev 627' Rwy 604'	
MISSED APCH: Turn RIGHT and proceed outbound on HMO VOR R-076 to D7.0, turn LEFT within 10 NM to HMO VOR at the minimum holding altitude.					
Alt Set: IN (MB on req)		Trans level: FL195		Trans alt: 18500'	
1. DME required. 2. In case of DME failure at any point during the procedure, maintain last altitude and proceed to the station according to ATC instructions.					



RECOMMENDED ALTITUDES	
HMO DME	ALTITUDE
6.0	2300'
5.0	1990'
4.0	1680'
3.0	1370'



Gnd speed-Kts	70	90	100	120	140	160	PAPI-L	RT on 112.8 R-076	HMO D7.0
Descent Angle 2.90°	359	462	513	616	718	821			
MAP at D1.0									
D6.0 to MAP	5.0	4:17	3:20	3:00	2:30	2:09	1:53		

STRAIGHT-IN LANDING RWY 05		CIRCLE-TO-LAND	
MDA(H) 1100' (496')		Max Kts	MDA(H)
A	1	90	1160' (533') -1
B	1 1/4	120	1540' (913') -2 3/4
C	1 1/2	140	1780' (1153') -3
D		165	

MMHO/HMO

GEN IGNACIO PESQUEIRA GARCIA INTL



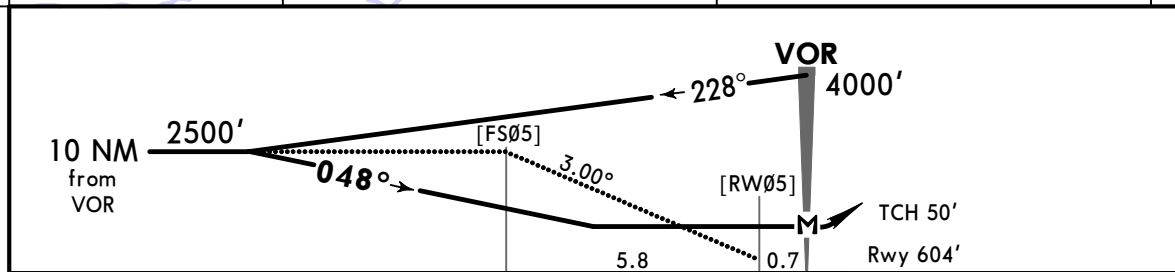
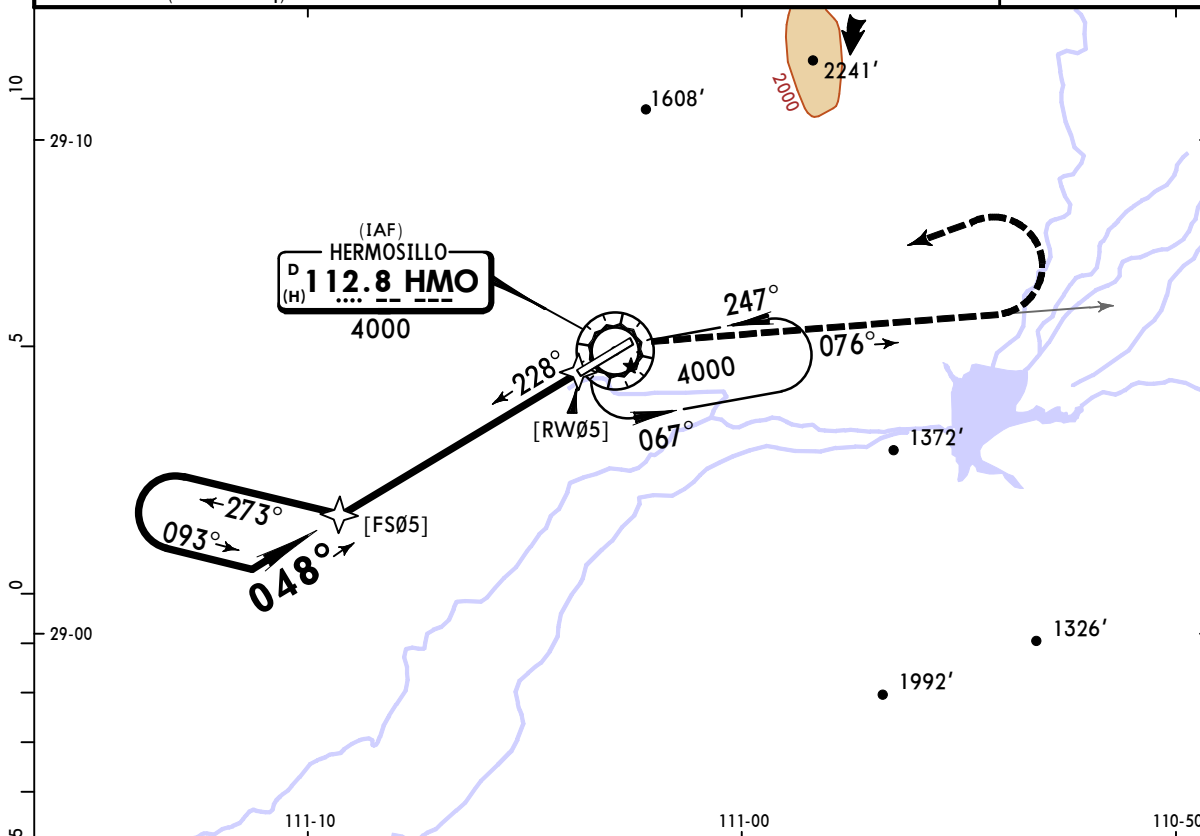
13-3

19 JAN 24
Eff 25 Jan

HERMOSILLO, MEXICO

VOR X Rwy 05

*ATIS 127.7		*HERMOSILLO Approach 121.4		*HERMOSILLO Tower 118.7		*GUAYMAS Tower 118.6																
VOR HMO 112.8	Final Apch Crs 048°	No FAF		MDA(H) 1160' (556')	Apt Elev 627' Rwy 604'		<p>MSA HMO VOR</p>															
MISSED APCH: Turn RIGHT and proceed on HMO VOR R-076 outbound, turn LEFT within 10 NM to HMO VOR at the minimum holding altitude.																						
MISSED APCH: Max Distance Outbound Track 7 NM <table border="1"> <tr> <td>Gnd Speed-Kts</td> <td>80</td> <td>100</td> <td>120</td> <td>140</td> <td>160</td> <td>180</td> <td>200</td> </tr> <tr> <td>Time</td> <td>5:15</td> <td>4:12</td> <td>3:30</td> <td>3:00</td> <td>2:37</td> <td>2:20</td> <td>2:06</td> </tr> </table>								Gnd Speed-Kts	80	100	120	140	160	180	200	Time	5:15	4:12	3:30	3:00	2:37	2:20
Gnd Speed-Kts	80	100	120	140	160	180	200															
Time	5:15	4:12	3:30	3:00	2:37	2:20	2:06															
Alt Set: IN (MB on req)		Trans level: FL195			Trans alt: 18500'																	



Gnd speed-Kts	70	90	100	120	140	160	PAPI-L	
Descent Angle 3.00°	372	478	531	637	743	849		
MAP at VOR								

STRAIGHT-IN LANDING RWY 05			CIRCLE-TO-LAND		
MDA(H) 1160' (556')			MDA(H)		
A	1	Max Kts	MDA(H)		
B	1	90	1160' (533') -1		
C	1½	140	1540' (913') -2¾		
D	1¾	165	1780' (1153') -3		

MMHO/HMO

JEPPESSEN

HERMOSILLO, MEXICO

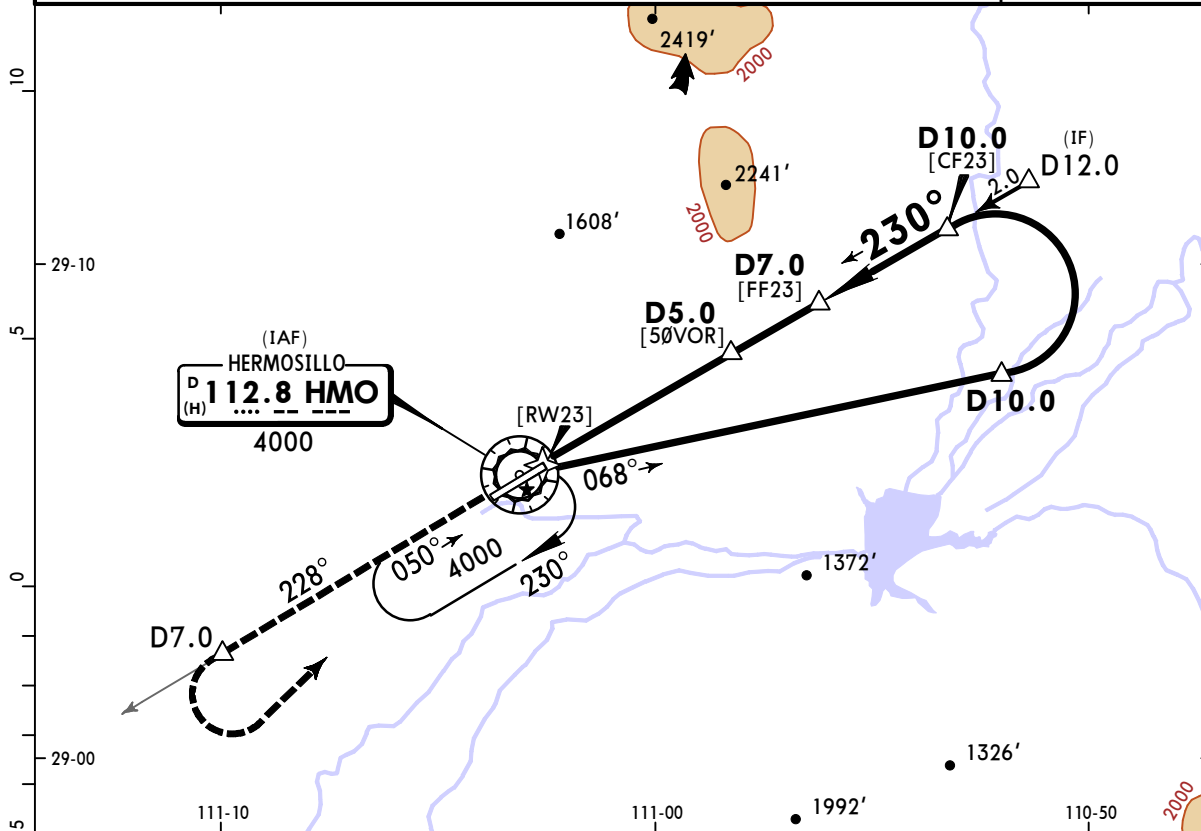
GEN IGNACIO PESQUEIRA GARCIA INTL

13-4

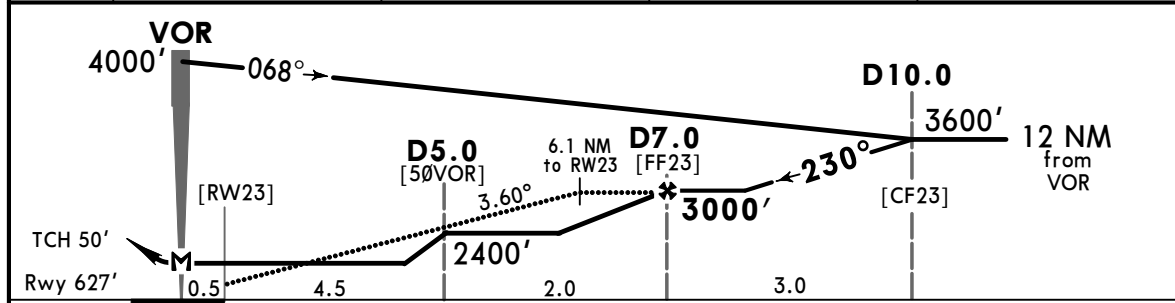
19 JAN 24
Eff 25 Jan

VOR Z Rwy 23

*ATIS 127.7		*HERMOSILLO Approach 121.4		*HERMOSILLO Tower 118.7		*GUAYMAS Tower 118.6	
VOR HMO 112.8	Final Apch Crs 230°	D7.0 3000' (2373')		MDA(H) 1120' (493')	Apt Elev 627' Rwy 627'		
MISSED APCH: Climb outbound via HMO VOR R-228 to D7.0, turn LEFT within 10 NM to HMO VOR at the minimum holding altitude.							
Alt Set: IN (MB on req)		Trans level: FL195		Trans alt: 18500'			
DME required.							MSA HMO VOR



HMO DME	2.0	3.0	4.0	5.0
ALTITUDE	1240'	1630'	2010'	2400'



Gnd speed-Kts	70	90	100	120	140	160	PAPI-L	
Descent Angle 3.60°	446	573	637	765	892	1019		
MAP at VOR	7.0	6:00	4:40	4:12	3:30	3:00		

STRAIGHT-IN LANDING RWY 23			CIRCLE-TO-LAND		
MDA(H) 1120' (493')			MDA(H)		
A			Max Kts		
B	1		90	1160' (533') -1	
C	1 1/4		140	1540' (913') -2 3/4	
D	1 1/2		165	1780' (1153') -3	

MMHO/HMO

GEN IGNACIO PESQUEIRA GARCIA INTL

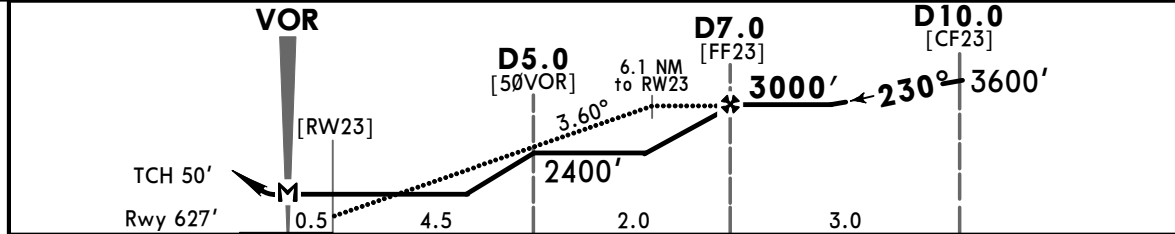
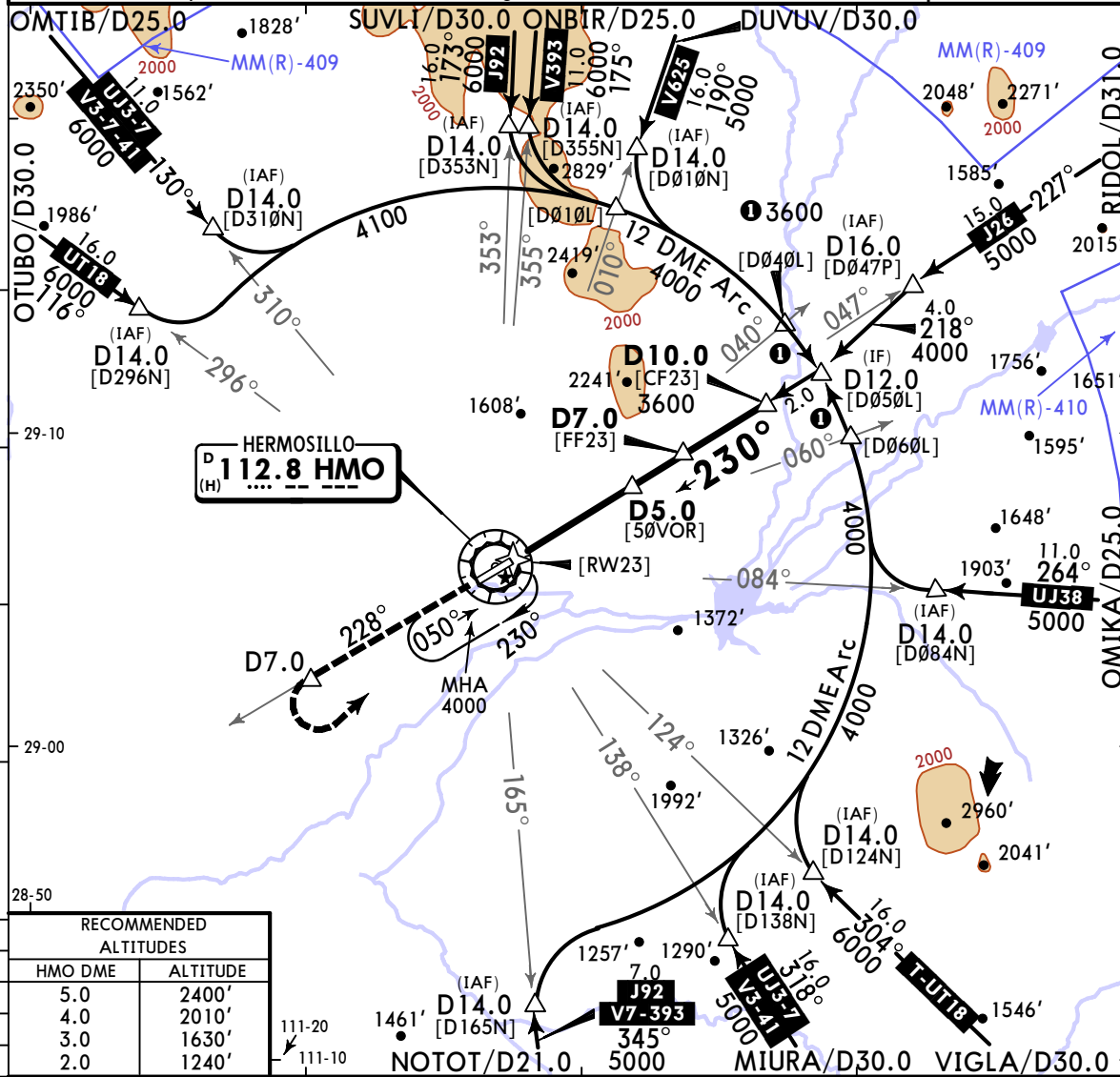


19 JAN 24
13-5
Eff 25 Jan

HERMOSILLO, MEXICO

VOR Y Rwy 23

*ATIS 127.7		*HERMOSILLO Approach 121.4		*HERMOSILLO Tower 118.7		*GUAYMAS Tower 118.6			
VOR HMO 112.8	Final Apch Crs 230°	D7.0 3000' (2373')	MDA(H) 1120' (493')	Apt Elev 627' Rwy 627'					
MISSED APCH: Climb outbound via HMO VOR R-228 to D7.0, turn LEFT within 10 NM to HMO VOR at the minimum holding altitude.									
Alt Set: IN (MB on req)		Trans level: FL195		Trans alt: 18500'					



Gnd speed-Kts	70	90	100	120	140	160	PAPI-L	↑	HMO via 112.8 R-228	D7.0	
Descent Angle	3.60°	446	573	637	765	892					1019
MAP at VOR	7.0	6:00	4:40	4:12	3:30	3:00					2:38

STRAIGHT-IN LANDING RWY 23				CIRCLE-TO-LAND			
MDA(H) 1120' (493')				MDA(H)			
A	1			Max Kts	1160' (533') -1		
B	1 1/4			90	1540' (913') -2 3/4		
C	1 1/2			120	1780' (1153') -3		
D				140			
				165			