

General Information

Location: TAMPICO MEX
ICAO/IATA: MMTM / TAM
Lat/Long: N22° 17.4', W097° 51.9'
Elevation: 82 ft

Airport Use: Public
Daylight Savings: Not Observed
UTC Conversion: +6:00 = UTC
Magnetic Variation: 6.0° E

Fuel Types: 100 Octane (LL), Jet A
Customs: Yes
Airport Type: IFR
Landing Fee: No
Control Tower: Yes
Jet Start Unit: No
LLWS Alert: No
Beacon: Yes

Sunrise: 1208 Z
Sunset: 0105 Z

Runway Information

Runway: 01
Length x Width: 4003 ft x 98 ft
Surface Type: asphalt
TDZ-Elev: 72 ft

Runway: 09
Length x Width: 3937 ft x 98 ft
Surface Type: asphalt
TDZ-Elev: 79 ft

Runway: 14
Length x Width: 8366 ft x 148 ft
Surface Type: asphalt
TDZ-Elev: 82 ft
Lighting: Edge, ALS

Runway: 19
Length x Width: 4003 ft x 98 ft
Surface Type: asphalt
TDZ-Elev: 46 ft

Runway: 27
Length x Width: 3937 ft x 98 ft
Surface Type: asphalt
TDZ-Elev: 44 ft

Runway: 32
Length x Width: 8366 ft x 148 ft
Surface Type: asphalt
TDZ-Elev: 75 ft
Lighting: Edge

Communication Information

Tampico Tower: 118.300
Tampico Approach: 120.300
Tampico Information: 122.450 AFIS
Monterrey Control ACC: 124.500 RCO
Mexico Control ACC: 126.600 RCO
Mexico Control ACC: 133.100 RCO

TMA



18 AUG 23 10-1B

TAMPICO, MEXICO

Gen Francisco Javier Mina Intl

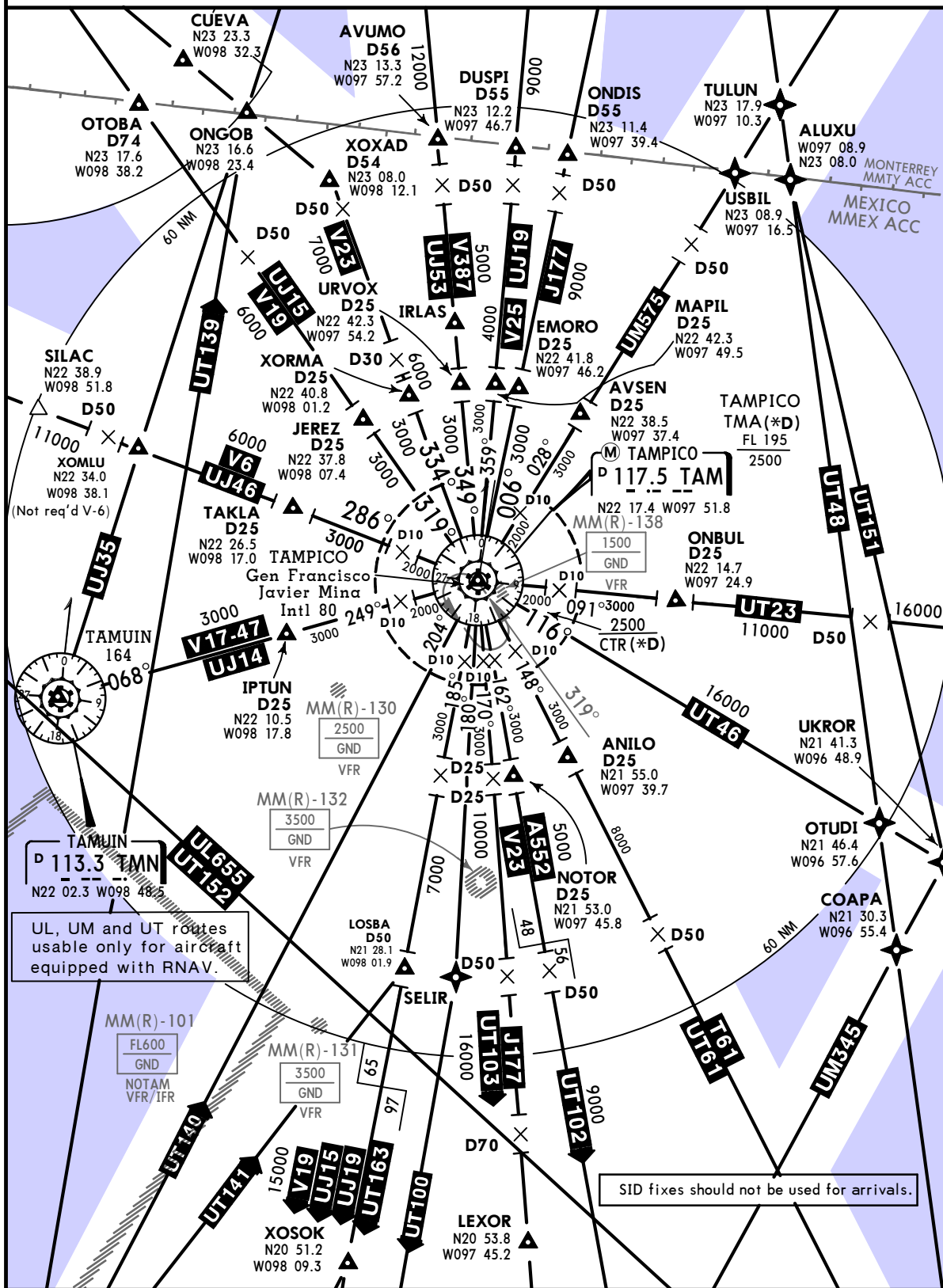
*TAMPICO Approach
120.3

SPEED RESTRICTIONS WITHIN MEXICO AIRSPACE

Maximum IAS unless otherwise depicted or authorized by ATC
Below 3000' AGL within 10NM of any airport.....200 KTS
Below 10000' MSL within Mexico Airspace.....250 KTS
Below 10000' AGL within 30NM of any airport.....250 KTS

WITHIN TAMPICO TMA

At or below 3100' MSL within 10NM of TAM VORDME.....200 KTS
At or below 10100' MSL within 30NM of TAM VORDME.....250 KTS



UL, UM and UT routes usable only for aircraft equipped with RNAV.

SID fixes should not be used for arrivals.

Apt Elev 82
 Trans alt: 18500

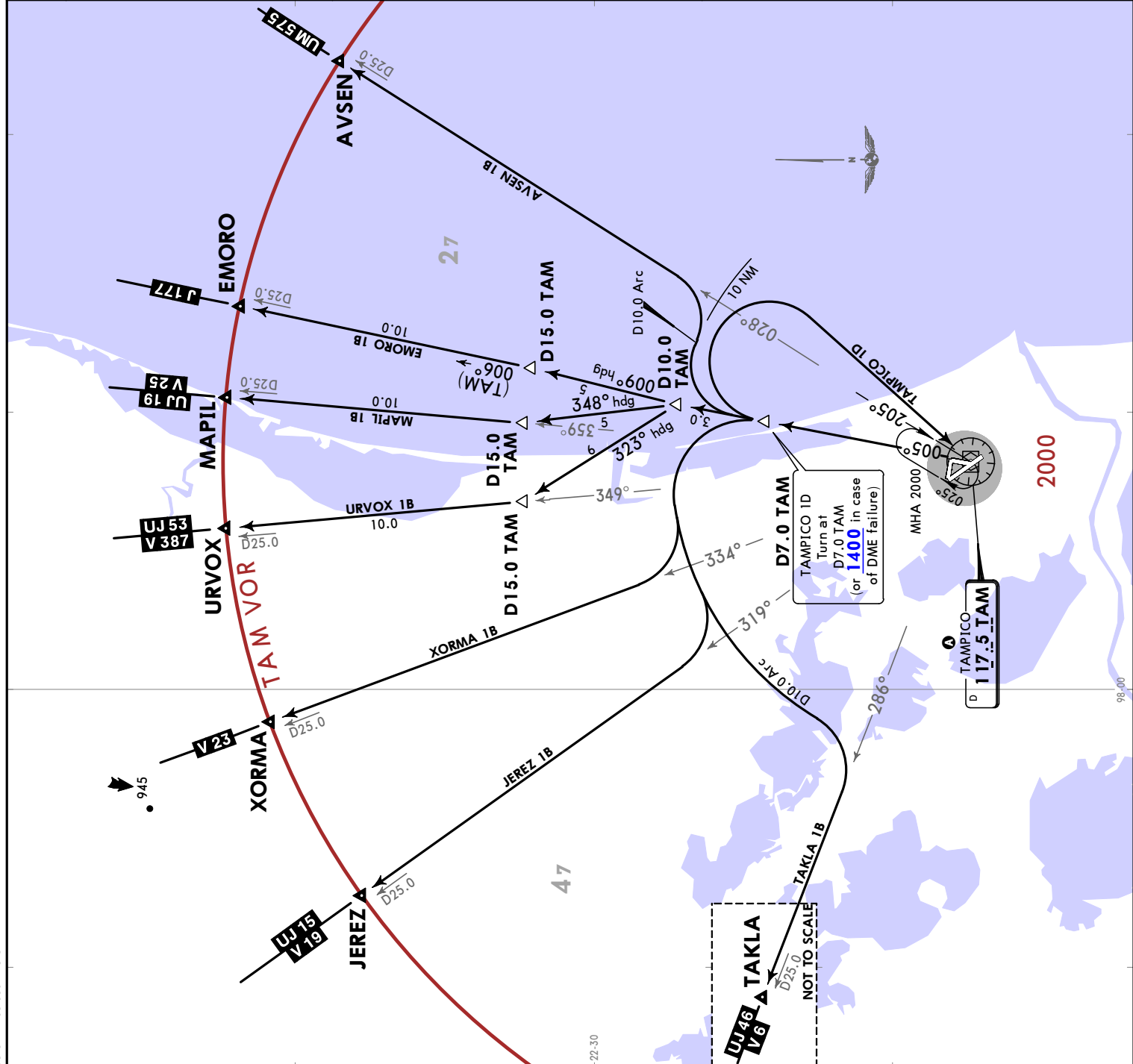
AVSEN 1B (AVSEN1B) [AVSE1B]
 EMORO 1B (EMORO1B) [EMOR1B]
 JEREZ 1B (JEREZ1B) [JERE1B]
 MAPIL 1B (MAPIL1B) [MAPI1B]
 TAKLA 1B (TAKLA1B) [TAKL1B]
 TAMPICO 1D (TAM1D) [TAM1D]
 URVOX 1B (URVOX1B) [URVO1B]
 XORMA 1B (XORMA1B) [XORM1B]
 DEPARTURES
 (RWY 01)

MINIMUM CROSSING ALTITUDE		
KANNA	J-177	3000
CLONN	UM-575	3000
CUN	UT-23	3000
CME	UT-46	3000
AVALI	UT-61	3000
PAZ	T-61	3000
LEXOR	V-23, A-552	3000
APN	J-177, UT-103	3000
TMN	V-19	3000
TTM	UJ-15-19, UT-163	3000
CVM	V-17-47	4000
XOXAD	V-6	3000
REX	UJ-15	3000
MAM	UJ-53	3000
	UJ-19	3000

This SID requires a minimum climb gradient of:
 TAKLA 1B: 250 FT/NM (4.11%) until crossing 10000.

Gnd speed-KT	75	100	150	200	250	300
250 FT/NM	313	417	625	833	1042	1250

SID	INITIAL CLIMB
AVSEN 1B	Climb on TAM R005 to D7.0 TAM, turn RIGHT and proceed on the D10.0 Arc TAM to intercept TAM R028 to AVSEN and continue on the assigned route or ATC instructions.
EMORO 1B	Climb on TAM R005 to D10.0 TAM, turn RIGHT and proceed on heading 009° to intercept TAM R006 to EMORO and continue on the assigned route or ATC instructions.
JEREZ 1B TAKLA 1B XORMA 1B	Climb on TAM R005 to D7.0 TAM, turn LEFT and proceed on the D10.0 Arc TAM to intercept the corresponding radial from TAM VOR to JEREZ, TAKLA or XORMA and continue on the assigned route or ATC instructions.
MAPIL 1B	Climb on TAM R005 to D10.0 TAM, turn LEFT and proceed on heading 348° to intercept TAM R359 to MAPIL and continue on the assigned route or ATC instructions.
TAMPICO 1D	Climb on TAM R005 to D7.0 TAM (or 1400 in case of DME failure) turn RIGHT within 10 NM to TAM VOR and depart at the MCA for the assigned route or ATC instructions.
URVOX 1B	Climb on TAM R005 to D10.0 TAM, turn LEFT and proceed on heading 323° to intercept TAM R349 to URVOX and continue on the assigned route or ATC instructions.



MMTM/TAM
GEN FRANCISCO
JAVIER MINA INTL

JEPPESEN
 16 FEB 24 (10-3A) Eff 22 Feb

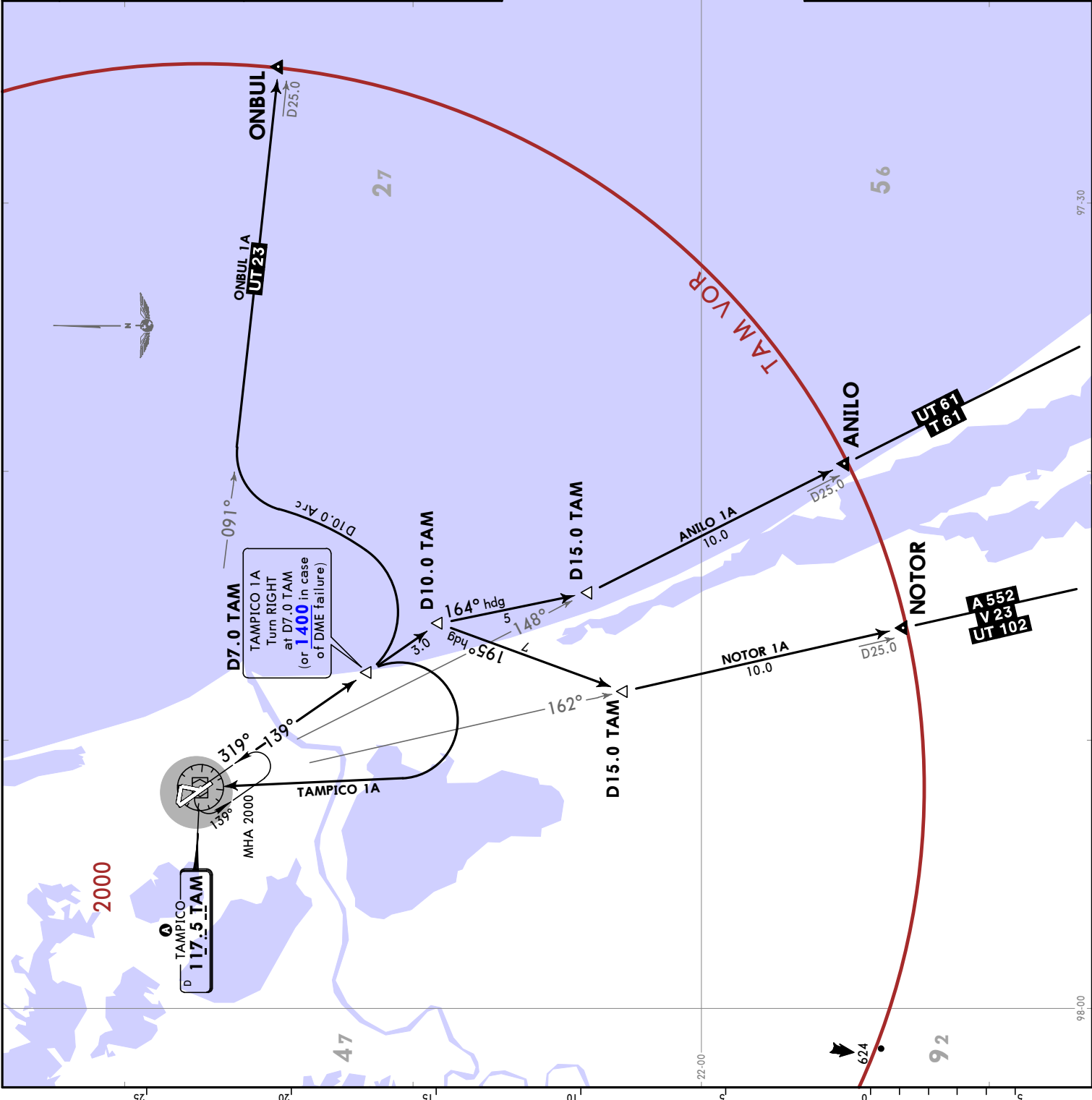
TAMPICO MEXICO
MEXICO
SID

Apt Elev 82
 Trans alt: 18500

ANIL0 1A (ANILO1A) [ANIL1A]
NOTOR 1A (NOTOR1A) [NOTO1A]
ONBUL 1A (ONBUL1A) [ONBU1A]
TAMPICO 1A (TAM1A) [TAM1A]

DEPARTURES
(RWY 14)

	MINIMUM CROSSING ALTITUDE	
KANNA	J-177	3000
CLOINN	UM-575	3000
CUN	UT-23	3000
CME	UT-46	3000
AVALI	UT-61	3000
PAZ	V-23, A-552	3000
LEXOR	J-177, UT-103	3000
APN	V-19	3000
TMN	V-17-47	3000
TTM	UJ-14	3000
CVM	V-6	4000
XOXAD	V-19	3000
REX	V-23	3000
MAM	V-387	3000
	V-25	3000



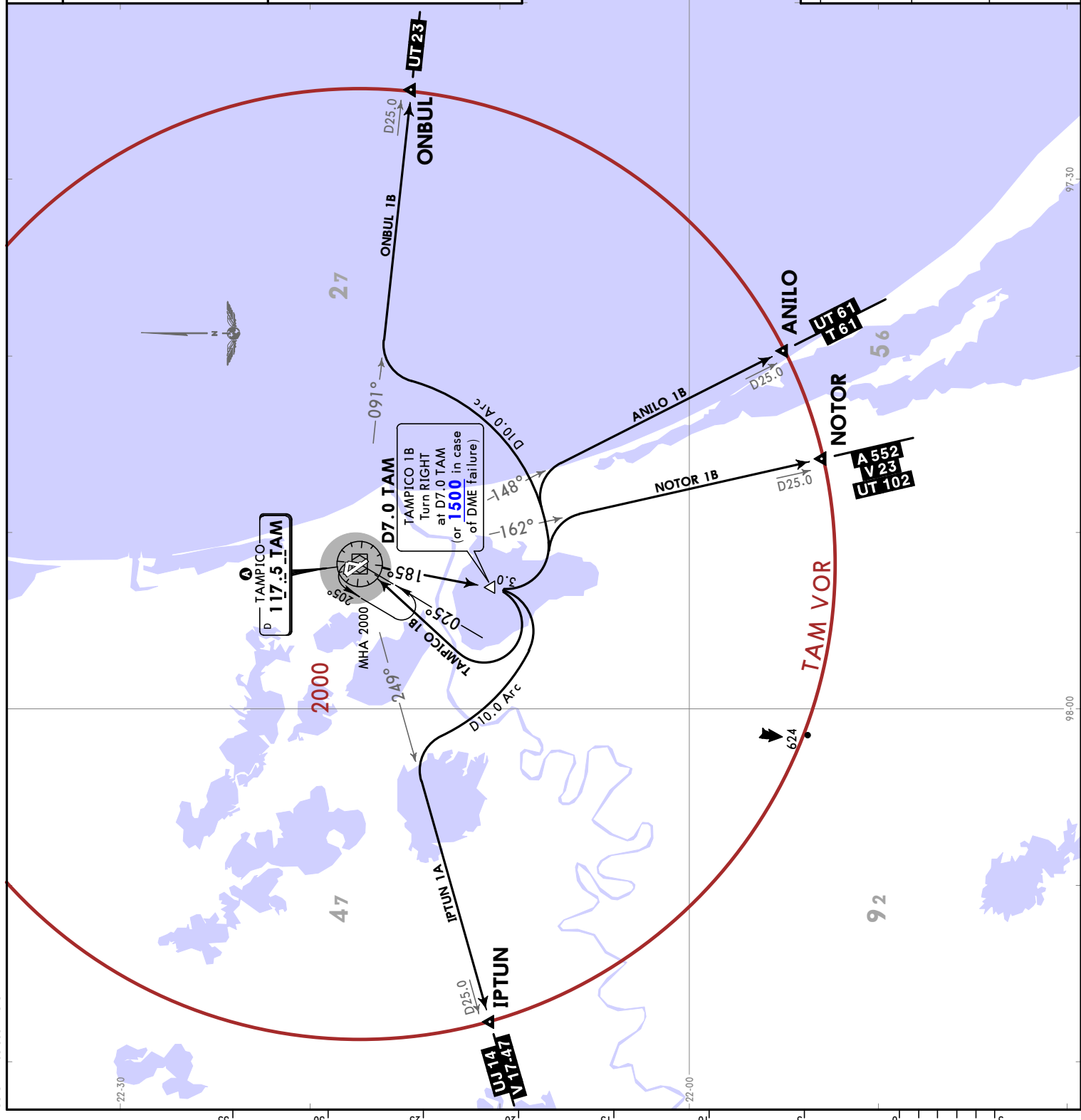
SID	INITIAL CLIMB
ANIL0 1A	Climb on TAM R139 to D10.0 TAM, turn RIGHT and proceed on heading 164° to intercept TAM R148 to ANILO. Continue on the assigned route or ATC instructions.
NOTOR 1A	Climb on TAM R139 to D10.0 TAM, turn RIGHT and proceed on heading 195° to intercept TAM R162 to NOTOR. Continue on the assigned route or ATC instructions.
ONBUL 1A	Climb on TAM R139 to D7.0 TAM, turn LEFT and proceed on the D10.0 Arc TAM to intercept TAM R091 to ONBUL. Continue on the assigned route or ATC instructions.
TAMPICO 1A	Climb on TAM R139 to D7.0 TAM (or 1400 in case of DME failure), turn RIGHT within 10 NM to TAM VOR and depart at the MCA for the assigned route or ATC instructions.

Apt Elev 82
 Trans alt: 18500

ANILO 1B (ANILO1B) [ANIL1B]
IPTUN 1A (IPTUN1A) [IPTU1A]
NOTOR 1B (NOTOR1B) [NOTO1B]
ONBUL 1B (ONBUL1B) [ONBU1B]
TAMPICO 1B (TAM1B) [TAM1B]

DEPARTURES (RWY 19)

	MINIMUM CROSSING ALTITUDE
KANNA	J-177 3000
CLONN	UM-575 3000
CUN	UT-23 3000
CME	UT-46 3000
AVALLI	UT-61 3000
PAZ	UT-102 3000
LEXOR	J-177, UT-103 3000
APN	UJ-15-19, UT-163 3000
TMN	UJ-14 3000
TTM	V-6 4000
CVM	V-19 3000
XOXAD	V-23 3000
REX	V-387 3000
MAM	UJ-53 3000
	UJ-19 3000



SID	INITIAL CLIMB
ANILO 1B NOTOR 1B ONBUL 1B	Climb on TAM R185 to D7.0 TAM, turn LEFT and proceed on the D10.0 Arc. TAM to intercept the corresponding radial from TAM VOR to ANILO, NOTOR or ONBUL, and continue on the assigned route or ATC instructions.
IPTUN 1A	Climb on TAM R185 to D7.0 TAM, turn RIGHT and proceed on the D10.0 Arc. TAM to intercept TAM R249 to IPTUN and continue on the assigned route or ATC instructions.
TAMPICO 1B	Climb on TAM R185 to D7.0 TAM (or 1500 in case of DME failure) turn RIGHT within 10 NM to TAM VOR, depart TAM VOR at the MCA for the assigned route or ATC instructions.

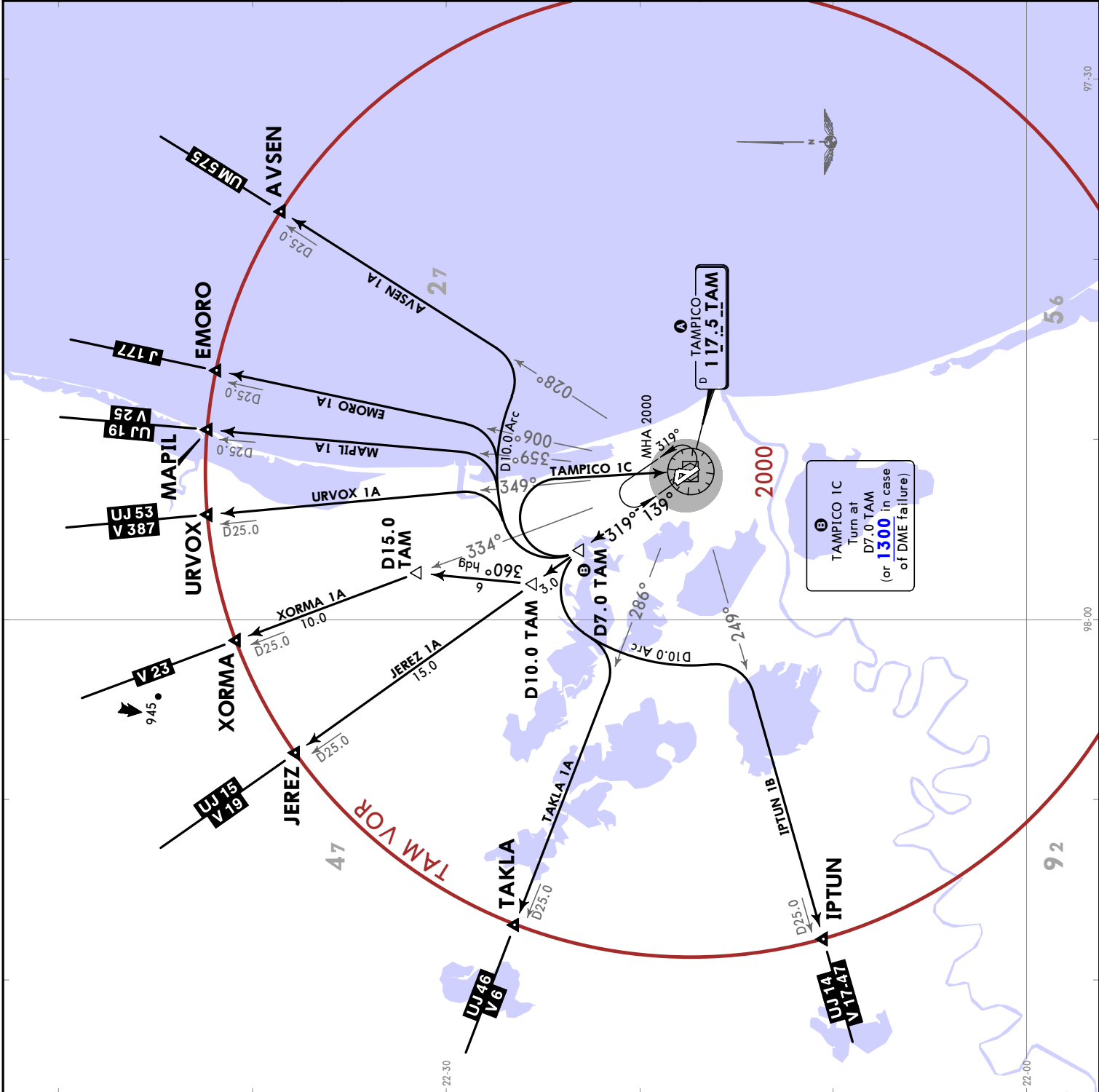
Apt Elev 82
 Trans alt: 18500

AVSEN 1A (AVSEN1A) [AVSE1A]
 EMORO 1A (EMORO1A) [EMOR1A]
 IPTUN 1B (IPTUN1B) [IPTU1B]
 JEREZ 1A (JEREZ1A) [JERE1A]
 MAPIL 1A (MAPIL1A) [MAPI1A]
 TAKLA 1A (TAKLA1A) [TAKL1A]
 TAMPICO 1C (TAMIC) [TAMIC]
 URVOX 1A (URVOX1A) [URVO1A]
 XORMA 1A (XORMA1A) [XORM1A]
 DEPARTURES
 (RWY 32)

MINIMUM CROSSING ALTITUDE		3000
KANNA	J-177	3000
CLONN	UM-575	3000
CUN	UT-23	3000
CME	UT-46	3000
AVALI	UT-61	3000
PAZ	UT-102	3000
LEXOR	J-177, UT-103	3000
APN	V-19	3000
TMN	V-17-47	3000
TTM	UJ-14	4000
CVM	V-19	3000
XOXAD	V-23	3000
REX	V-387	3000
MAM	UJ-25	3000

This SID requires a minimum climb gradient of:
 TAKLA 1A: 250 FT/NM (4.11%) until crossing 10000.
 Gnd speed-KT 75 100 150 200 250 300
 250 FT/NM 313 417 625 833 1042 1250

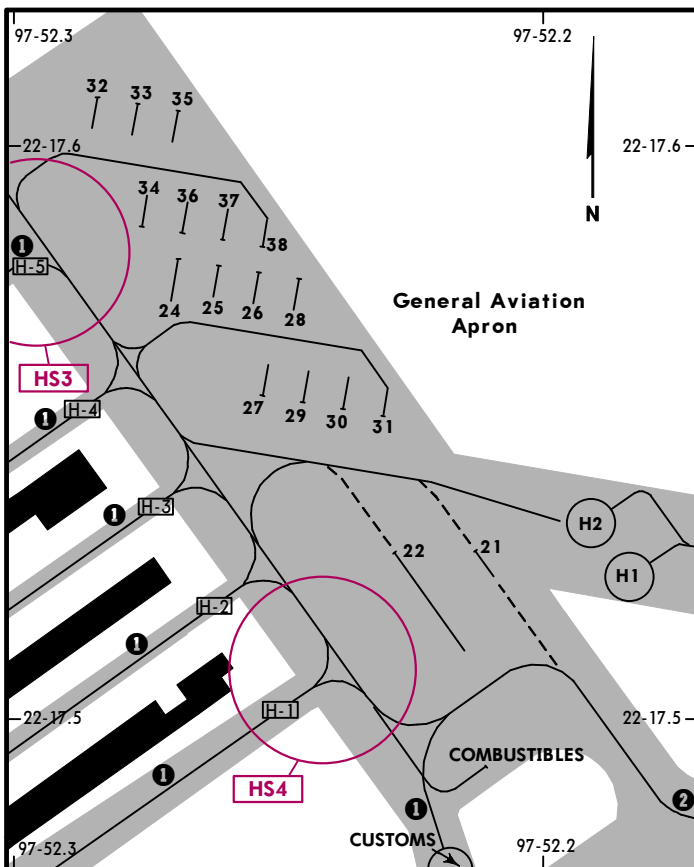
SID	INITIAL CLIMB
AVSEN 1A EMORO 1A MAPIL 1A URVOX 1A	Climb on TAM R319 to D7.0 TAM, turn RIGHT and proceed on the D10.0 Arc TAM to intercept the corresponding radial from TAM VOR to AVSEN, EMORO, MAPIL or URVOX and continue on the assigned route or ATC instructions.
IPTUN 1B TAKLA 1A	Climb on TAM R319 to D7.0 TAM, turn LEFT and proceed on the D10.0 Arc TAM to intercept the corresponding radial from TAM VOR to IPTUN or TAKLA and continue on the assigned route or ATC instructions.
JEREZ 1A	Climb on TAM R319 to D10.0 TAM, proceed to JEREZ and continue on the assigned route or ATC instructions.
TAMPICO 1C	Climb on TAM R319 to D7.0 TAM (or 1300 in case of DME failure), turn RIGHT within 10 NM to TAM VOR and depart at the MCA Δ for the assigned route or ATC instructions.
XORMA 1A	Climb on TAM R319 to D10.0 TAM, turn RIGHT and proceed on heading 360° to intercept TAM R334 to XORMA and continue on the assigned route or ATC instructions.



MMTM/TAM

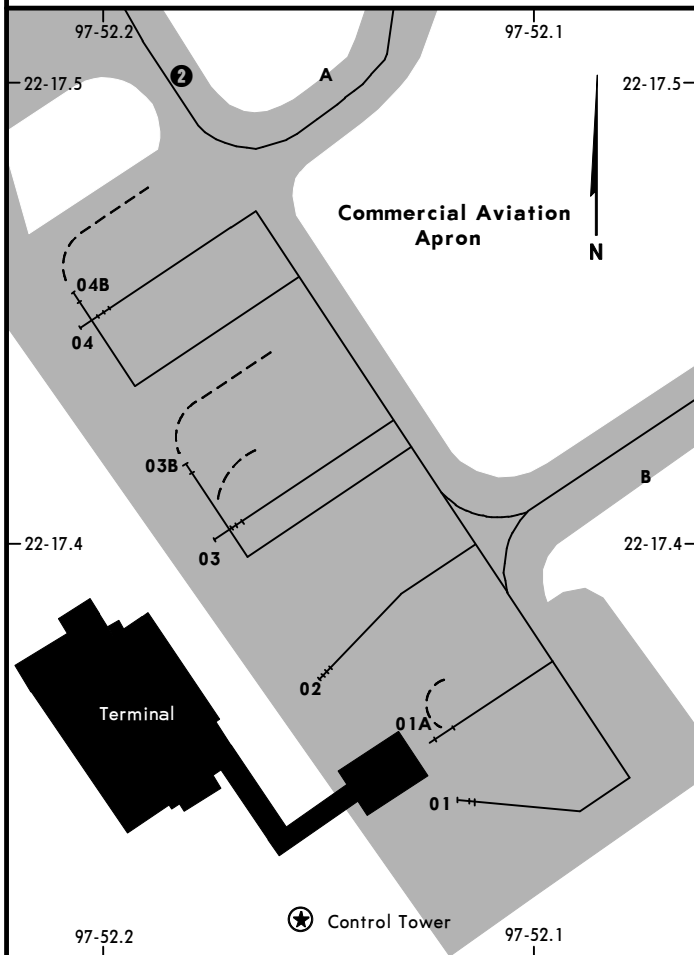
JEPPESEN
 16 FEB 24
 Eff 22 Feb 10-9A

TAMPICO, MEXICO
 GEN FRANCISCO JAVIER MINA INTL



GENERAL AVIATION APRON STANDS COORDINATES	
STAND No.	COORDINATES
21, 22	N22 17.5 W097 52.2
24 thru 29	N22 17.6 W097 52.3
30, 31	N22 17.6 W097 52.2
32 thru 38	N22 17.6 W097 52.3
H1, H2	N22 17.5 W097 52.2
CUSTOMS	N22 17.5 W097 52.2
COMBUSTIBLES	N22 17.5 W097 52.2

Max wingspans:
 ① 49' (15m)
 ② 79' (24m)



COMMERCIAL AVIATION APRON STANDS COORDINATES	
STAND No.	COORDINATES
01	N22 17.3 W097 52.1
01A, 02	N22 17.4 W097 52.1
03 thru 04B	N22 17.4 W097 52.2

HOT SPOTS

HS1 Aircraft taxiing on Twy A, must remain on Rwy holding position until ATC permission to enter Rwy.

HS2 Aircraft from Rwy 01/19, Rwy 14/32 must stay on Rwy holding position (beside mandatory instructions signs) until ATC permission to enter Rwy and continue taxiing or takeoff.

HS3 Aircraft taxiing from hangar on taxiline H-5, must be cautious when entering General Apron.

HS4 Aircraft taxiing from hangar on taxiline H-1, must be cautious when entering General Apron.

MMTM/TAM
GEN FRANCISCO
JAVIER MINA INTL

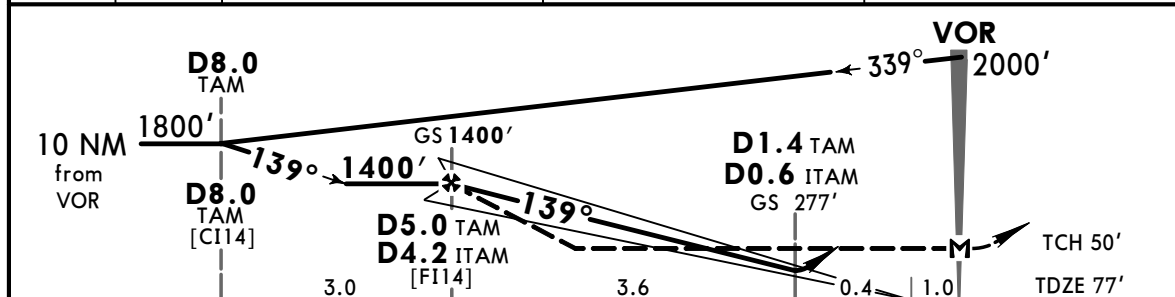
JEPESEN
 16 FEB 24 **(11-1)** Eff 22 Feb

TAMPICO, MEXICO
ILS or LOC Z Rwy 14

*TAMPICO Approach				*TAMPICO Tower		
120.3				118.3		
LOC ITAM 109.3	Final Apch Crs 139°	D5.0 TAM D4.2 ITAM 1400' (1323')	ILS DA(H) 277' (200')	Apt Elev 82'	TDZE 77'	2000 MSA TAM VOR
MISSED APCH: Climb outbound via TAM VOR R-139 to D7.0 TAM, then turn RIGHT within 10 NM to TAM VOR at minimum holding altitude.						
Alt Set: IN (MB on req)		Trans level: FL195		Trans alt: 18500'		
1. VOR DME required. 2. ILS/DME usable with DME equipped aircraft with accurate instrument reading within 0.2 NM.						



LOC	ITAM DME	4.2	3.0	2.0
(GS out)	ALTITUDE	1400'	1030'	710'



Gnd speed-Kts	70	90	100	120	140	160	ALSF-I REIL PAPI	TAM via 117.5 R-139 D7.0 TAM
GS	3.00°	372	478	531	637	743		
MAP at VOR								
FAF to MAP	5.0	4:17	3:20	3:00	2:30	2:09	1:53	

State	STRAIGHT-IN LANDING				CIRCLE-TO-LAND			
	ILS DA(H) 277' (200')		LOC (GS out) MDA(H) 440' (363')		Max Kts		MDA(H)	
A	ALS out		ALS out		90	700' (618')		V1 V1600m
B	V1/2	V3/4	V3/4	V1	120	700' (618')		V1 V1600m
C	V800m	V1200m	V1200m	V1600m	140	700' (618')		V1 3/4 V2800m
D			V1	V1 1/4	165	700' (618')		V2 V3200m
			V1600m	V2000m				

MMTM/TAM
GEN FRANCISCO
JAVIER MINA INTL

JEPPESSEN

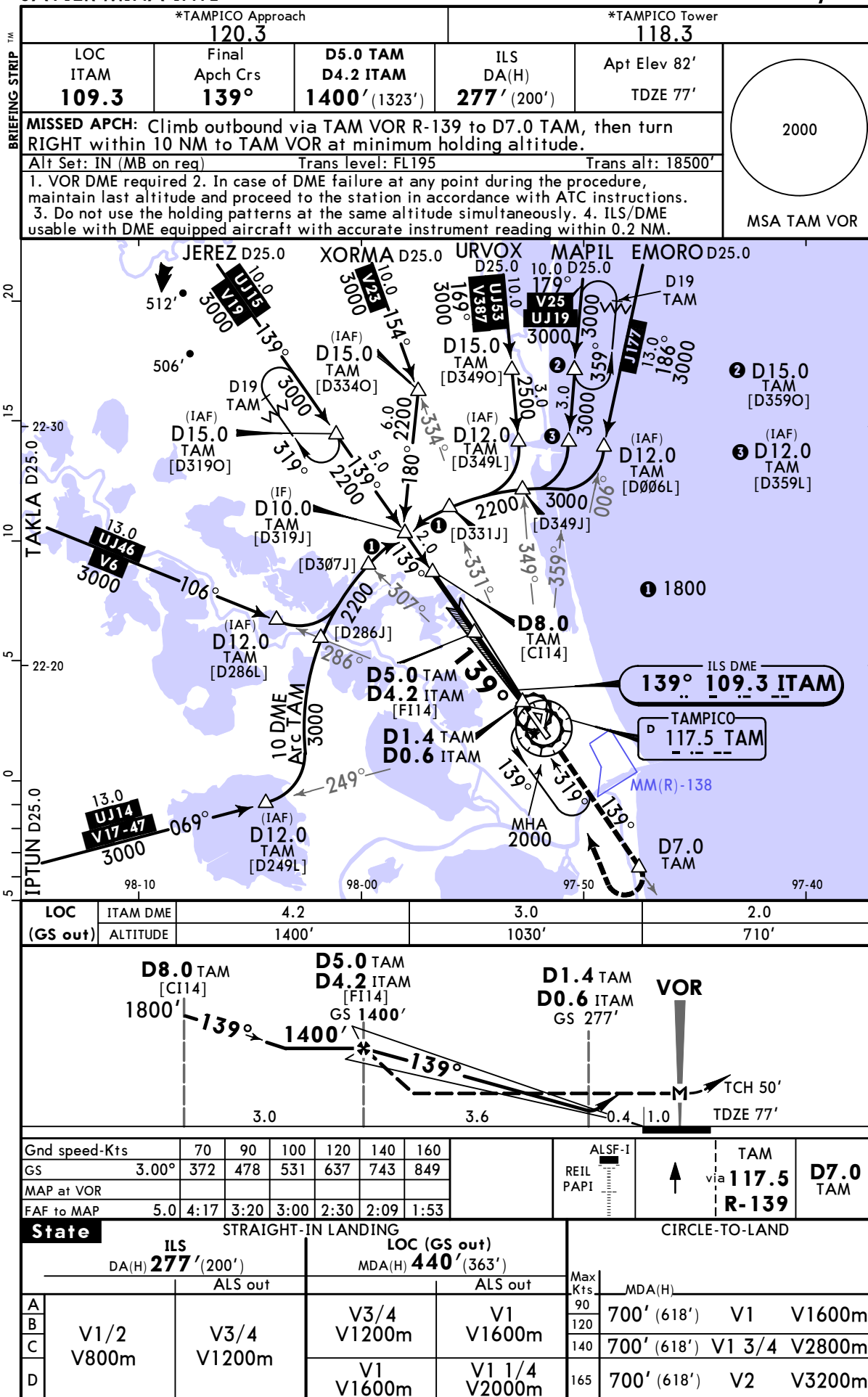
TAMPICO, MEXICO

16 FEB 24

11-2

Eff 22 Feb

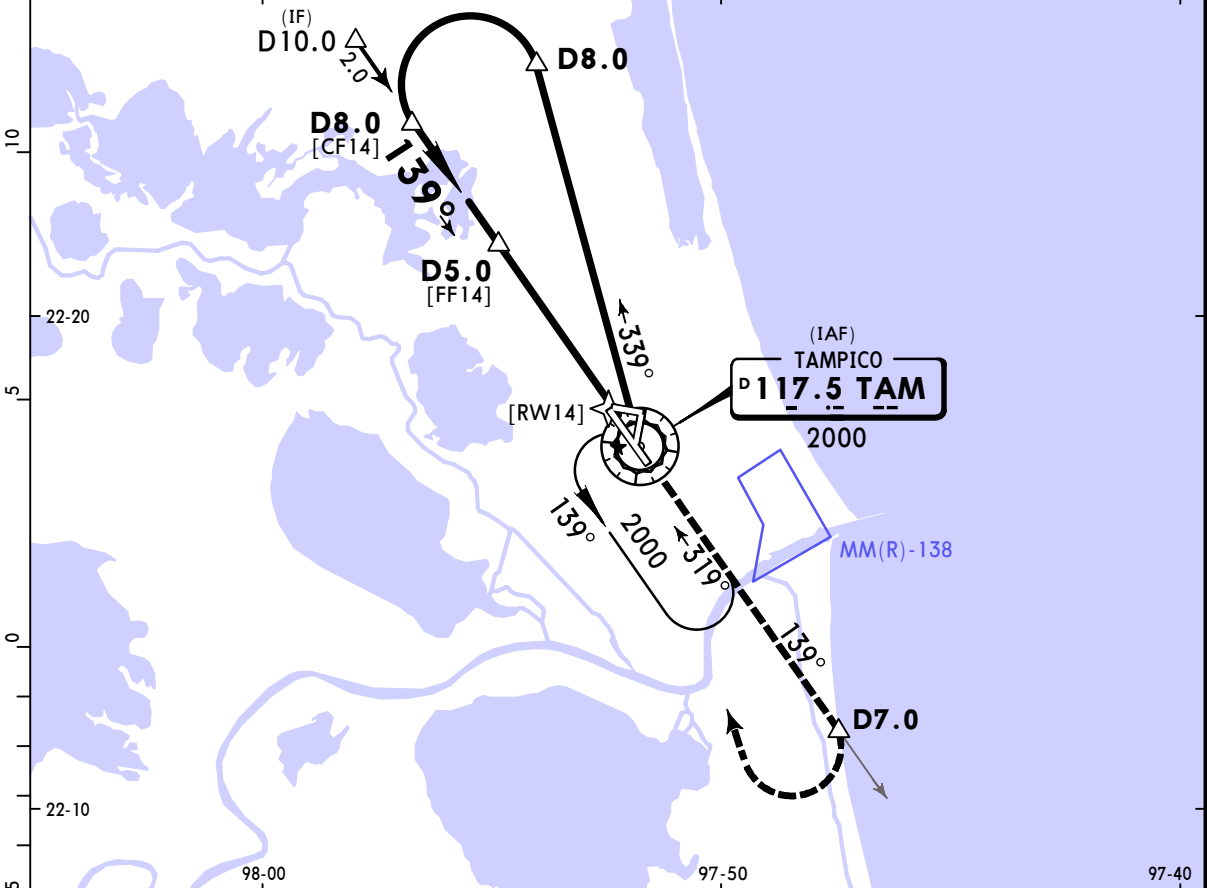
ILS or LOC Y Rwy 14



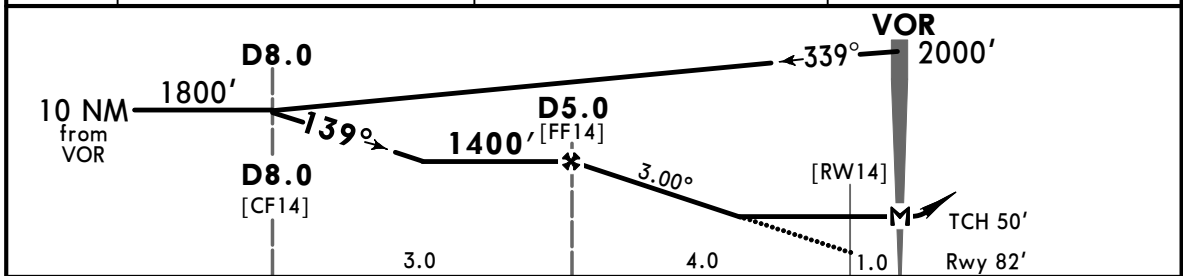
CHANGES: Procedure revised, new AOM concept.

MMTM/TAM **JEPPESEN** **TAMPICO, MEXICO**
 GEN FRANCISCO JAVIER MINA INTL **(13-1)** **16 FEB 24** **VOR Z Rwy 14**
Eff 22 Feb

*TAMPICO Approach 120.3				*TAMPICO Tower 118.3	
VOR TAM 117.5	Final Apch Crs 139°	D5.0 1400' (1318')	MDA(H) 540' (458')	Apt Elev 82' Rwy 82'	2000
MISSED APCH: Climb outbound via TAM VOR R-139 to D7.0, then turn RIGHT within 10 NM to TAM VOR at minimum holding altitude.					
Alt Set: IN (MB on req)		Trans level: FL195		Trans alt: 18500'	
DME required.					MSA TAM VOR



TAM DME	5.0	4.0	3.0
ALTITUDE	1400'	1090'	770'



Gnd speed-Kts	70	90	100	120	140	160	HIALS PAPI TAM via 117.5 D7.0 R-139
Descent Angle 3.00°	372	478	531	637	743	849	
MAP at VOR							
FAF to MAP	5.0	4:17	3:20	3:00	2:30	2:09	1:53

State	STRAIGHT-IN LANDING				CIRCLE-TO-LAND				
	MDA(H) 540' (458')				MDA(H) _____				
	ALS out				Max Kts				
A	V1		V1600m		90	680' (598')	V1	V1600m	
B	V1 1/4		V2000m		120	680' (598')	V1 1/2	V2400m	
C	V1 1/2		V2400m		140	680' (598')	V2	V3200m	
D	V1 1/4		V2000m		165	680' (598')	V2	V3200m	

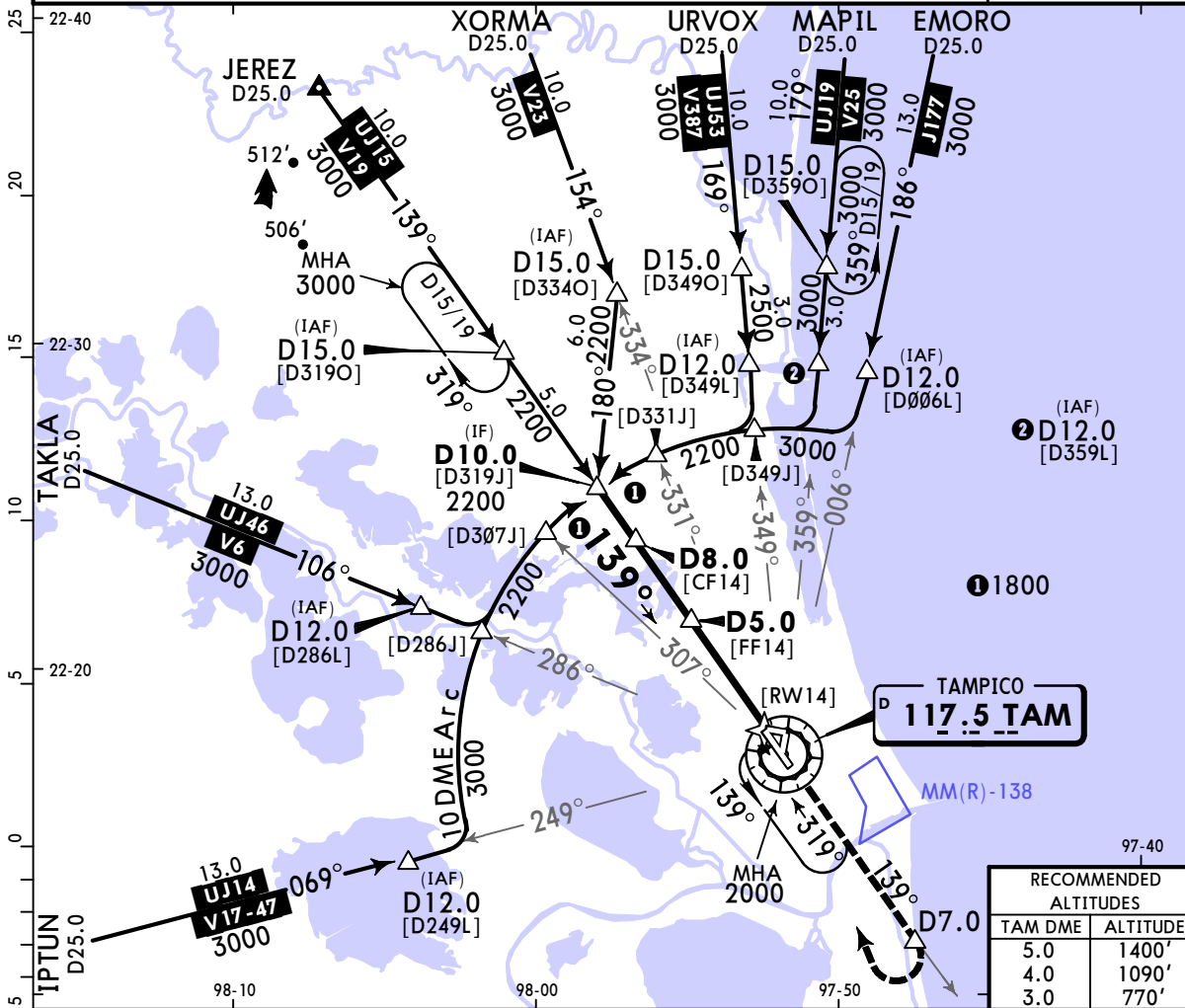
MMTM/TAM TAMPICO, MEXICO

GEN FRANCISCO JAVIER MINA INTL (13-2) Eff 22 Feb VOR Y Rwy 14

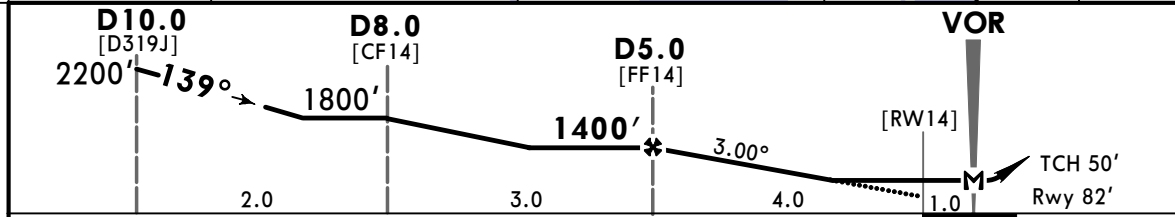


16 FEB 24
Eff 22 Feb

*TAMPICO Approach 120.3				*TAMPICO Tower 118.3	
VOR TAM 117.5	Final Apch Crs 139°	D5.0 1400' (1318')	MDA(H) 540' (458')	Apt Elev 82' Rwy 82'	
MISSED APCH: Climb outbound via TAM VOR R-139 to D7.0, then turn RIGHT within 10 NM to TAM VOR at minimum holding altitude.					<div style="border: 1px solid black; border-radius: 50%; width: 60px; height: 60px; margin: 0 auto; display: flex; align-items: center; justify-content: center;">2000</div>
Alt Set: IN (MB on req)			Trans level: FL195		Trans alt: 18500'
1. DME required. 2. In case of DME failure at any point of the procedure, maintain last altitude and proceed to the station in accordance with ATC instructions. 3. Do not use the holding patterns at the same altitude simultaneously.					MSA TAM VOR



RECOMMENDED ALTITUDES	
TAM DME	ALTITUDE
5.0	1400'
4.0	1090'
3.0	770'



Gnd speed-Kts	70	90	100	120	140	160	HIALS PAPI	TAM via 117.5 R-139	D7.0
Descent Angle 3.00°	372	478	531	637	743	849			
MAP at VOR									
FAF to MAP	5.0	4:17	3:20	3:00	2:30	2:09	1:53		

	STRAIGHT-IN LANDING		Max Kts	CIRCLE-TO-LAND	
	MDA(H)	ALS out		MDA(H)	
A			90	680' (598')	V1 V1600m
B			120	680' (598')	V1 V1600m
C			140	680' (598')	V1 1/2 V2400m
D			165	680' (598')	V2 V3200m

MMTM/TAM

GEN FRANCISCO JAVIER MINA INTL

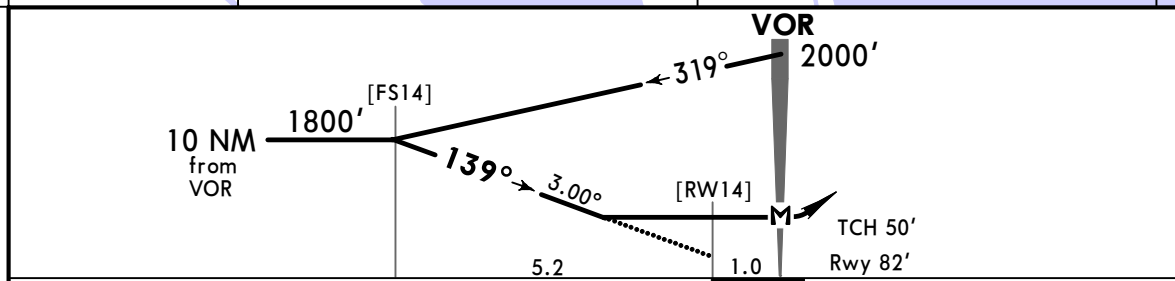
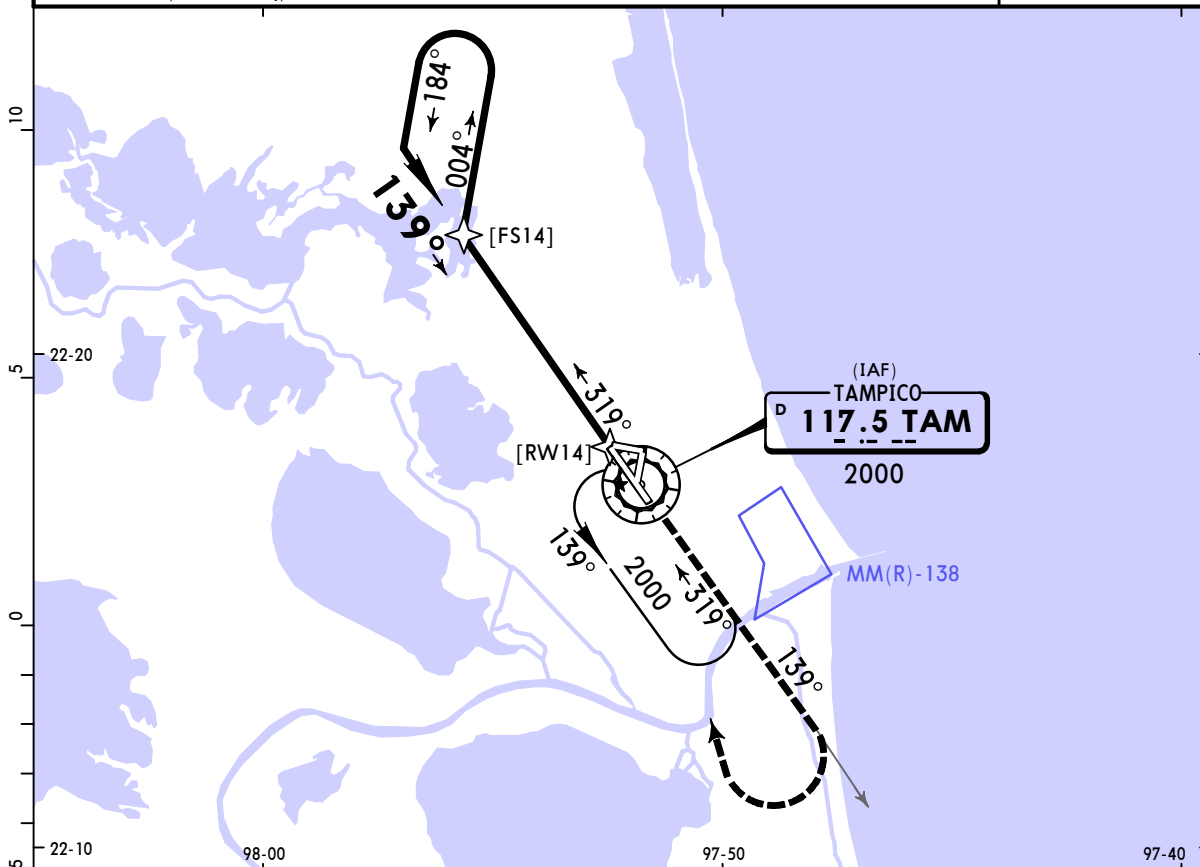


16 FEB 24
Eff 22 Feb

TAMPICO, MEXICO

VOR X Rwy 14

*TAMPICO Approach			*TAMPICO Tower																												
120.3			118.3																												
VOR TAM 117.5	Final Apch Crs 139°	No FAF	MDA(H) 600' (518')		Apt Elev 82' Rwy 82'																										
MISSED APCH: Climb outbound via TAM VOR R-139, then turn RIGHT within 10 NM to TAM VOR at the minimum holding altitude.					<div style="border: 1px solid black; border-radius: 50%; width: 100px; height: 100px; display: flex; align-items: center; justify-content: center;">2000</div> <p>MSA TAM VOR</p>																										
<table border="1"> <tr> <td colspan="7">MISSED APCH: Max Distance Outbound Track 7 NM</td> </tr> <tr> <td>Gnd speed-Kts</td> <td>80</td> <td>100</td> <td>120</td> <td>140</td> <td>160</td> <td>180</td> <td>200</td> </tr> <tr> <td>Time</td> <td>5:15</td> <td>4:12</td> <td>3:30</td> <td>3:00</td> <td>2:38</td> <td>2:20</td> <td>2:06</td> </tr> </table>							MISSED APCH: Max Distance Outbound Track 7 NM							Gnd speed-Kts	80	100	120	140	160	180	200	Time	5:15	4:12	3:30	3:00	2:38	2:20	2:06		
MISSED APCH: Max Distance Outbound Track 7 NM																															
Gnd speed-Kts	80	100	120	140	160	180	200																								
Time	5:15	4:12	3:30	3:00	2:38	2:20	2:06																								
Alt Set: IN (MB on req)		Trans level: FL195			Trans alt: 18500'																										



Gnd speed-Kts	70	90	100	120	140	160	HIALS PAPI 	TAM via 117.5 R-139
Descent Angle	3.00°	372	478	531	637	743		

MAP at VOR		STRAIGHT-IN LANDING				CIRCLE-TO-LAND			
State		MDA(H) 600' (518')				ALS out			
A		V1		V1600m		Max Kts	MDA(H)		
B		V1		V1600m		90	680'(598')	V1	V1600m
C		V1 1/2		V2400m		140	680'(598')	V1 1/2	V2400m
D		V1 3/4		V2800m		165	680'(598')	V2	V3200m

CHANGES: Procedure title, alt set, new AOM concept.

MMTM/TAM
GEN FRANCISCO JAVIER MINA INTL

16 FEB 24
Eff 22 Feb

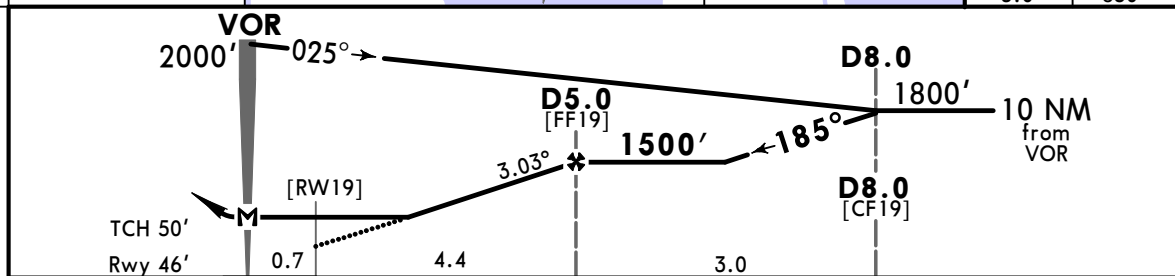
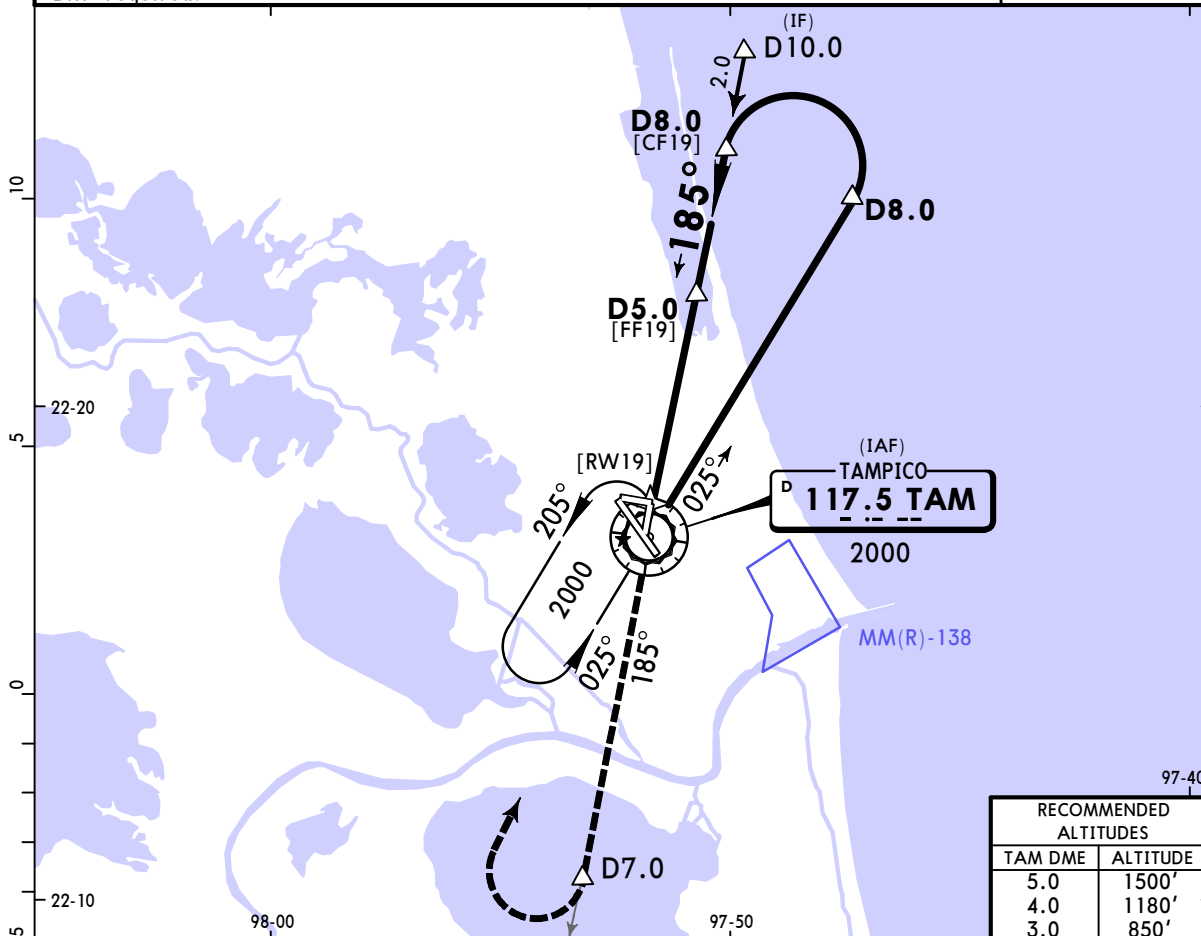
JEPPESSEN

(13-4)

CAT A, B & C

TAMPICO, MEXICO
VOR Z Rwy 19

*TAMPICO Approach 120.3				*TAMPICO Tower 118.3		
VOR TAM 117.5	Final Apch Crs 185°	D5.0 1500' (1454')	MDA(H) 540' (494')	Apt Elev 82'	Rwy 46'	2000
MISSED APCH: Climb outbound via TAM VOR R-185 to D7.0, then turn RIGHT within 10 NM to TAM VOR at minimum holding altitude.						
Alt Set: IN (MB on req)		Trans level: FL195		Trans alt: 18500'		
DME required.						MSA TAM VOR



Gnd speed-Kts	70	90	100	120	140	160	TAM via 117.5 D7.0 R-185
Descent Angle 3.03°	375	482	536	643	750	858	
MAP at VOR							
FAF to MAP	5.0	4:17	3:20	3:00	2:30	2:09	1:53

State		STRAIGHT-IN LANDING		CIRCLE-TO-LAND	
		MDA(H) 540' (494')			
A		V1	V1600m	Max Kts 90	MDA(H) 680' (598') V1 V1600m
B				120	680' (598') V1 V1600m
C		V1 1/4	V2000m	140	680' (598') V1 1/2 V2400m
D		NOT APPLICABLE		D	NOT APPLICABLE

MMTM/TAM



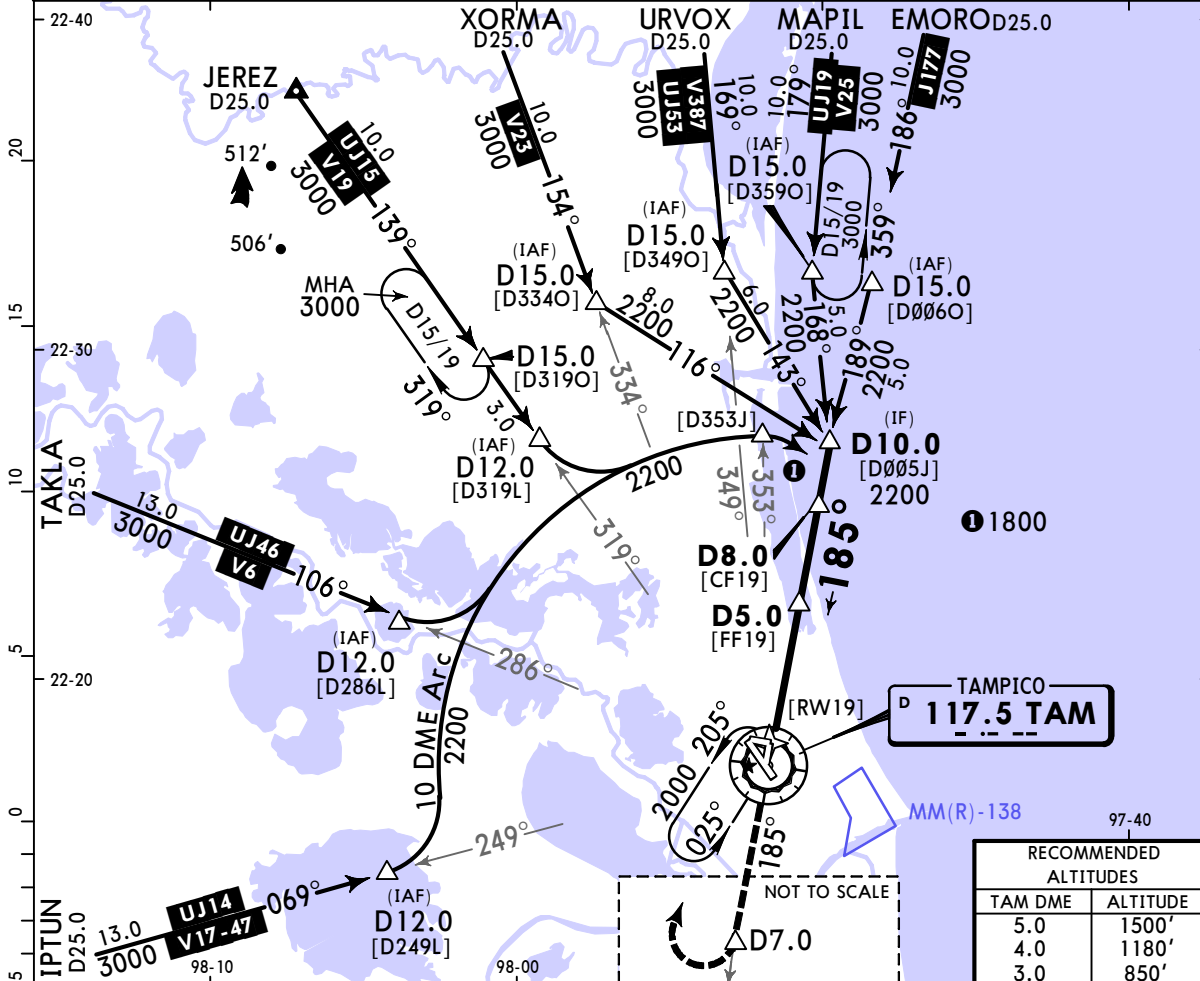
TAMPICO, MEXICO

GEN FRANCISCO
JAVIER MINA INTL

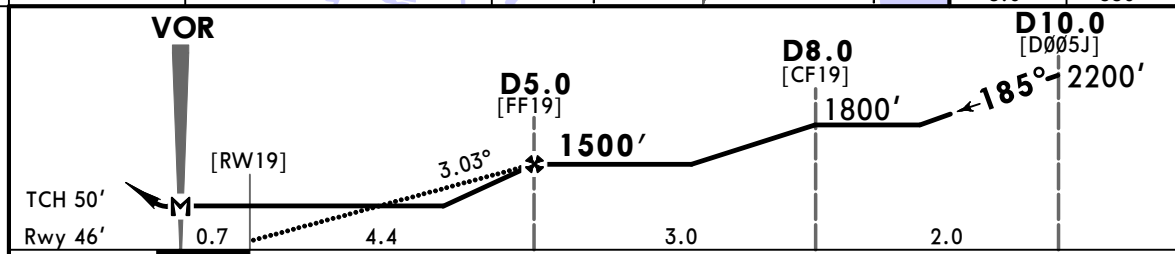
16 FEB 24
Eff 22 Feb **(13-5)**

CAT A, B & C VOR Y Rwy 19

*TAMPICO Approach 120.3				*TAMPICO Tower 118.3	
VOR TAM 117.5	Final Apch Crs 185°	D5.0 1500' (1454')	MDA(H) 540' (494')	Apt Elev 82' Rwy 46'	
MISSED APCH: Climb outbound via TAM VOR R-185 to D7.0, then turn RIGHT within 10 NM to TAM VOR at minimum holding altitude.					
Alt Set: IN (MB on req) Trans level: FL195 Trans alt: 18500'					
1. DME required. 2. In case of DME failure at any point during the procedure, maintain last altitude and proceed to the station in accordance with ATC instructions. 3. Do not use holding patterns at the same altitude simultaneously.					
					2000
					MSA TAM VOR



RECOMMENDED ALTITUDES	
TAM DME	ALTITUDE
5.0	1500'
4.0	1180'
3.0	850'



Gnd speed-Kts	70	90	100	120	140	160
Descent Angle 3.03°	375	482	536	643	750	858
MAP at VOR						
FAF to MAP	5.0	4:17	3:20	3:00	2:30	2:09

↑	TAM	
	via 117.5	D7.0
	R-185	

State		STRAIGHT-IN LANDING		CIRCLE-TO-LAND	
		MDA(H) 540' (494')		Max Kts. MDA(H)	
A		V1	V1600m	90	680' (598')
B		V11/4	V2000m	120	V1 V1600m
C		V11/4	V2000m	140	680' (598')
D		NOT APPLICABLE	NOT APPLICABLE	D	NOT APPLICABLE

MMTM/TAM
GEN FRANCISCO
JAVIER MINA INTL

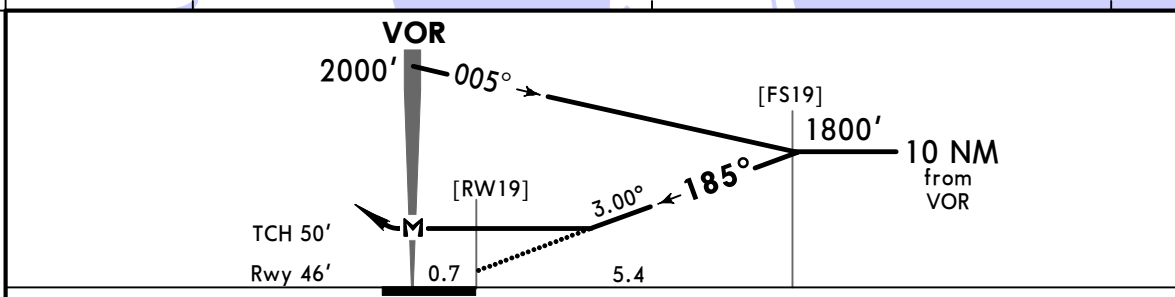
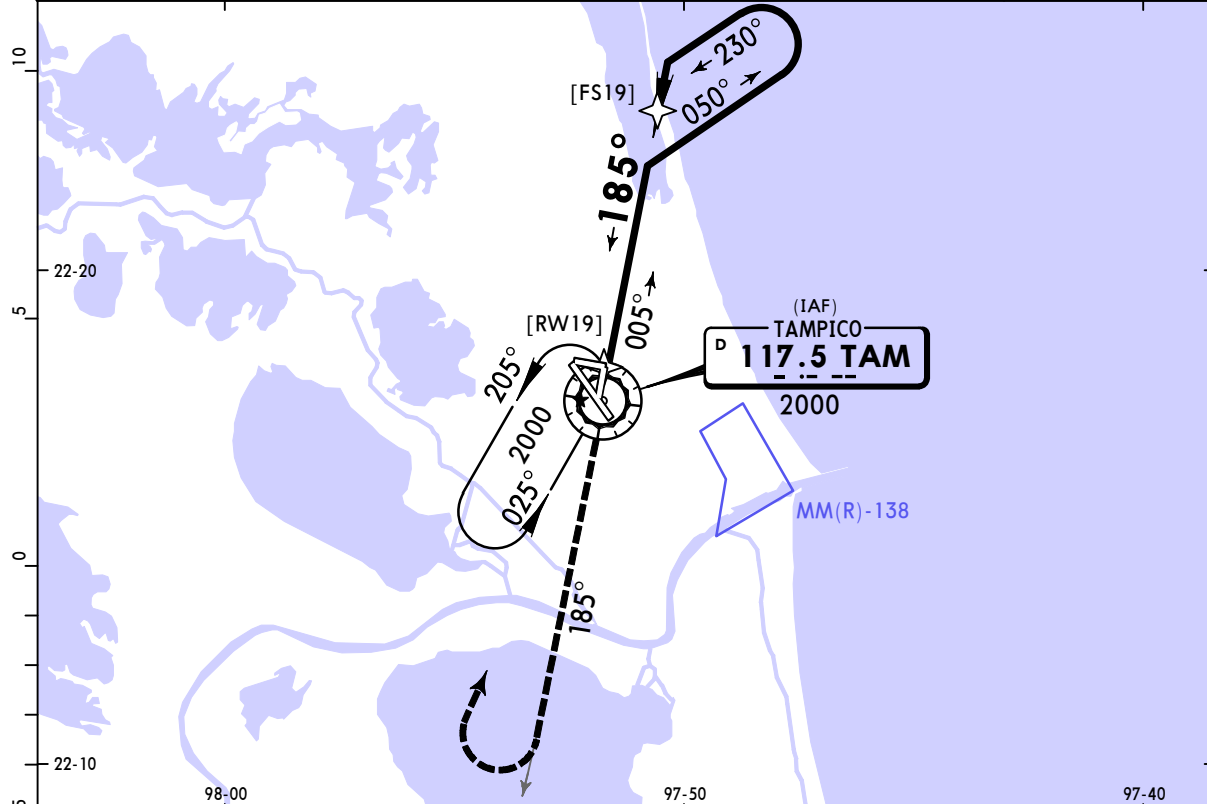


TAMPICO, MEXICO

16 FEB 24
Eff 22 Feb (13-6)

CAT A, B & C **VOR X Rwy 19**

*TAMPICO Approach 120.3			*TAMPICO Tower 118.3																									
VOR TAM 117.5	Final Apch Crs 185°	No FAF	MDA(H) 600' (554')	Apt Elev 82' Rwy 46'	2000 MSA TAM VOR																							
MISSED APCH: Climb outbound via TAM VOR R-185, then turn RIGHT within 10 NM to TAM VOR at the minimum holding altitude.																												
<table border="1"> <tr> <th colspan="8">MISSED APCH: Max Distance Outbound Track 7 NM</th> </tr> <tr> <td>Gnd speed-Kts</td> <td>80</td> <td>100</td> <td>120</td> <td>140</td> <td>160</td> <td>180</td> <td>200</td> </tr> <tr> <td>Time</td> <td>5:15</td> <td>4:12</td> <td>3:30</td> <td>3:00</td> <td>2:38</td> <td>2:20</td> <td>2:06</td> </tr> </table>						MISSED APCH: Max Distance Outbound Track 7 NM								Gnd speed-Kts	80	100	120	140	160	180	200	Time	5:15	4:12	3:30	3:00	2:38	2:20
MISSED APCH: Max Distance Outbound Track 7 NM																												
Gnd speed-Kts	80	100	120	140	160	180	200																					
Time	5:15	4:12	3:30	3:00	2:38	2:20	2:06																					
Alt Set: IN (MB on req)		Trans level: FL195		Trans alt: 18500'																								



Gnd speed-Kts	70	90	100	120	140	160	↑ via TAM 117.5 R-185
Descent Angle 3.00°	372	478	531	637	743	849	
MAP at VOR							

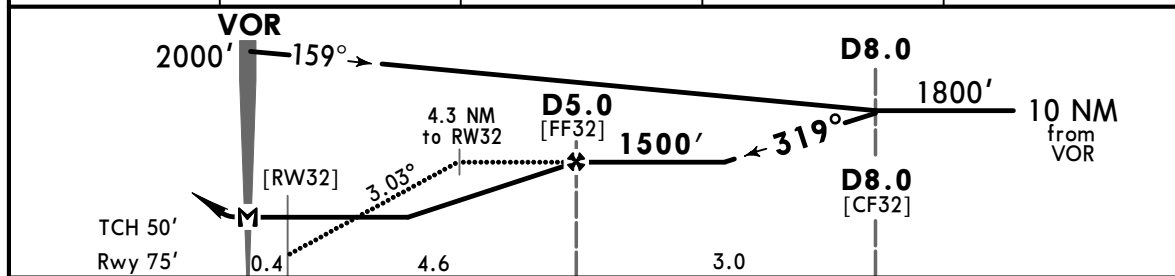
State	STRAIGHT-IN LANDING		CIRCLE-TO-LAND	
	MDA(H) 600' (554')			
A	V1	V1600m	Max Kts 90	MDA(H) 680' (598')
B			120	V1 V1600m
C	V1 1/2	V2400m	140	680' (598') V1 1/2 V2400m
D	NOT APPLICABLE		D	NOT APPLICABLE

MMTM/TAM **JEPPESEN** **TAMPICO, MEXICO**
GEN FRANCISCO JAVIER MINA INTL (13-7) 16 FEB 24 **VOR Z Rwy 32**
 Eff 22 Feb

*TAMPICO Approach				*TAMPICO Tower	
120.3				118.3	
VOR TAM 117.5	Final Apch Crs 319°	D5.0 1500' (1425')	MDA(H) 580' (505')	Apt Elev 82' Rwy 75'	2000 MSA TAM VOR
MISSED APCH: Climb outbound via TAM VOR R-319 to D7.0, then turn RIGHT within 10 NM to TAM VOR at minimum holding altitude.					
Alt Set: IN (MB on req)		Trans level: FL195		Trans alt: 18500'	
DME required.					



TAM DME	2.0	3.0	4.0	5.0
ALTITUDE	640'	960'	1280'	1600'



Gnd speed-Kts	70	90	100	120	140	160	REIL PAPI-L	TAM via 117.5 R-319	D7.0	
Descent Angle	3.03°	375	482	536	643	750				858
MAP at VOR										
FAF to MAP	5.0	4:17	3:20	3:00	2:30	2:09	1:53			

State				STRAIGHT-IN LANDING				CIRCLE-TO-LAND				
				MDA(H) 580' (505')				Max Kts				
A	V1			V1600m			90	MDA(H)				
B	V1			V1600m			120	680' (598')	V1	V1600m		
C	V1 1/2			V2400m			140	680' (598')	V1 1/2	V2400m		
D	V1 1/2			V2400m			165	680' (598')	V2	V3200m		

MMTM/TAM

GEN FRANCISCO JAVIER MINA INTL

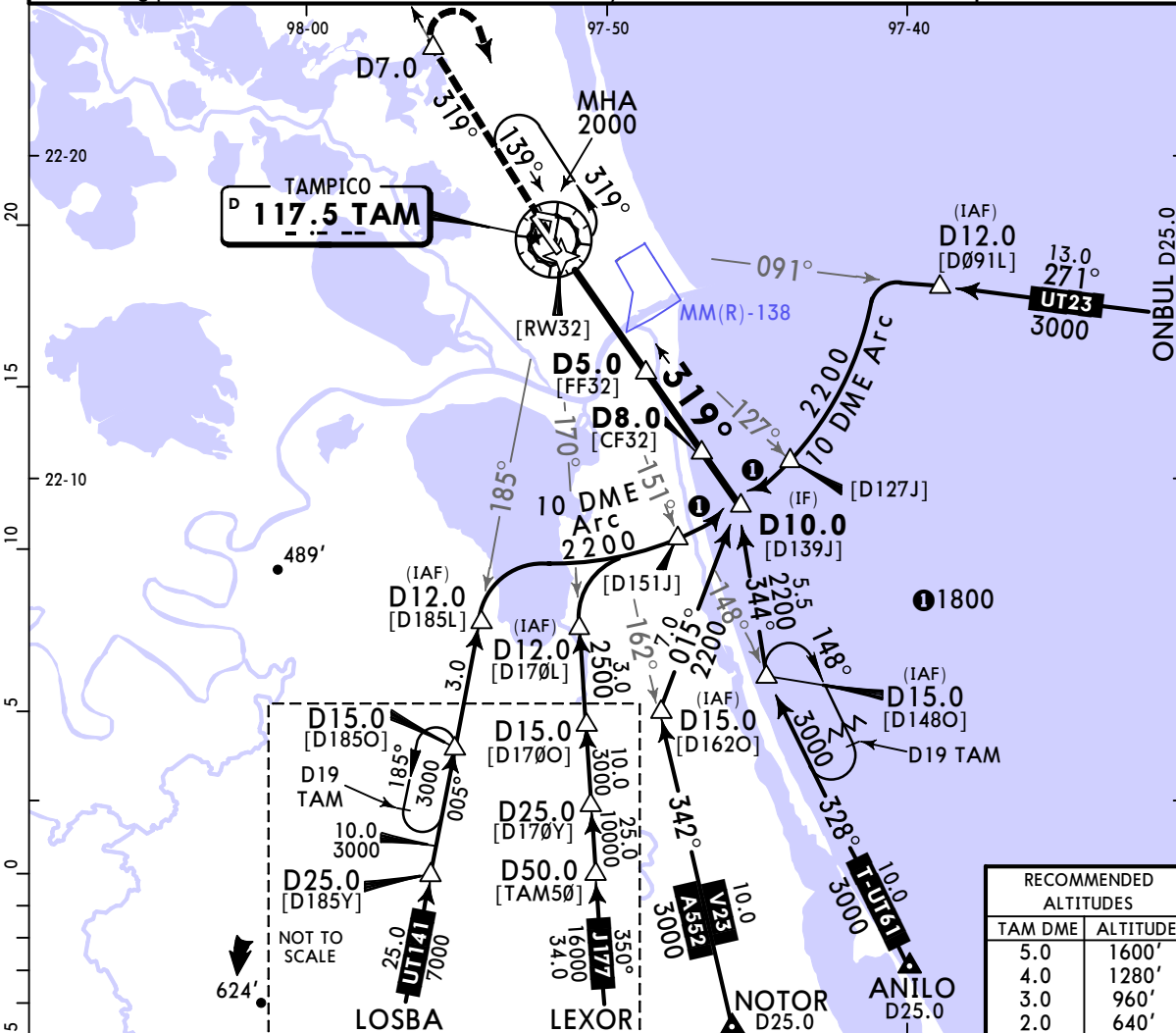
13-8

16 FEB 24
Eff 22 Feb

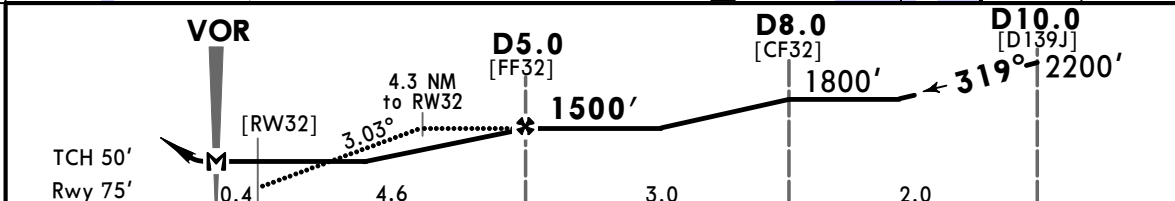
TAMPICO, MEXICO

VOR Y Rwy 32

*TAMPICO Approach				*TAMPICO Tower		
120.3				118.3		
VOR TAM 117.5	Final Apch Crs 319°	D5.0 1500' (1425')	MDA(H) 580' (505')	Apt Elev 82' Rwy 75'		
MISSED APCH: Climb outbound via TAM VOR R-319 to D7.0, then turn RIGHT within 10 NM to TAM VOR at minimum holding altitude.						
Alt Set: IN (MB on req)			Trans level: FL195			Trans alt: 18500'
1. DME required. 2. In case of DME failure at any point during the procedure, maintain last altitude and proceed to the station in accordance with ATC instructions. 3. Do not use holding patterns at the same altitude simultaneously.						MSA TAM VOR



RECOMMENDED ALTITUDES	
TAM DME	ALTITUDE
5.0	1600'
4.0	1280'
3.0	960'
2.0	640'



Gnd speed-Kts	70	90	100	120	140	160
Descent Angle	3.03°	375	482	536	643	750
MAP at VOR						
FAF to MAP	5.0	4:17	3:20	3:00	2:30	2:09

REIL	TAM
PAPI-L	via 117.5
	R-319
	D7.0

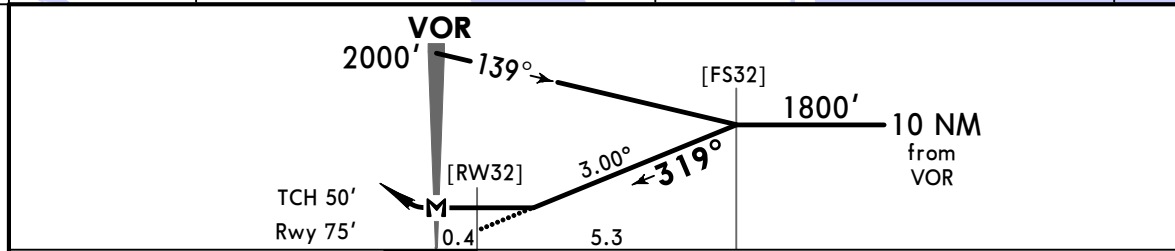
State	STRAIGHT-IN LANDING		CIRCLE-TO-LAND	
	V1	V1600m	V1	V1600m
A				
B				
C	V1 1/2	V2400m	V1 1/2	V2400m
D			V2	V3200m

MMTM/TAM
GEN FRANCISCO JAVIER MINA INTL

JEPPESEN
 16 FEB 24
(13-9) Eff 22 Feb

TAMPICO, MEXICO
VOR X Rwy 32

*TAMPICO Approach 120.3			*TAMPICO Tower 118.3																	
VOR TAM 117.5	Final Apch Crs 319°	No FAF	MDA(H) 600' (525')	Apt Elev 82' Rwy 75'	2000 MSA TAM VOR															
MISSED APCH: Climb outbound via TAM VOR R-319, then turn RIGHT within 10 NM to TAM VOR at the minimum holding altitude.																				
MISSED APCH: Max Distance Outbound Track 7 NM <table border="1"> <tr> <td>Gnd speed-Kts</td> <td>80</td> <td>100</td> <td>120</td> <td>140</td> <td>160</td> <td>180</td> <td>200</td> </tr> <tr> <td>7 NM to turn</td> <td>5:15</td> <td>4:12</td> <td>3:30</td> <td>3:00</td> <td>2:38</td> <td>2:20</td> <td>2:06</td> </tr> </table>						Gnd speed-Kts	80	100	120	140	160	180	200	7 NM to turn	5:15	4:12	3:30	3:00	2:38	2:20
Gnd speed-Kts	80	100	120	140	160	180	200													
7 NM to turn	5:15	4:12	3:30	3:00	2:38	2:20	2:06													
Alt Set: IN (MB on req)		Trans level: FL195		Trans alt: 18500'																

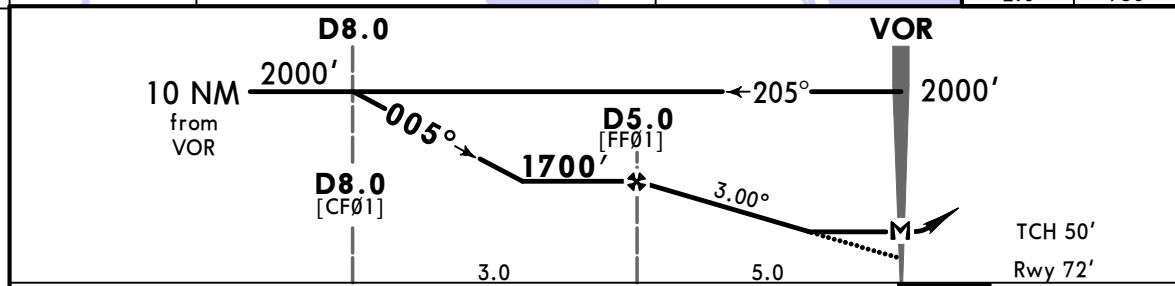
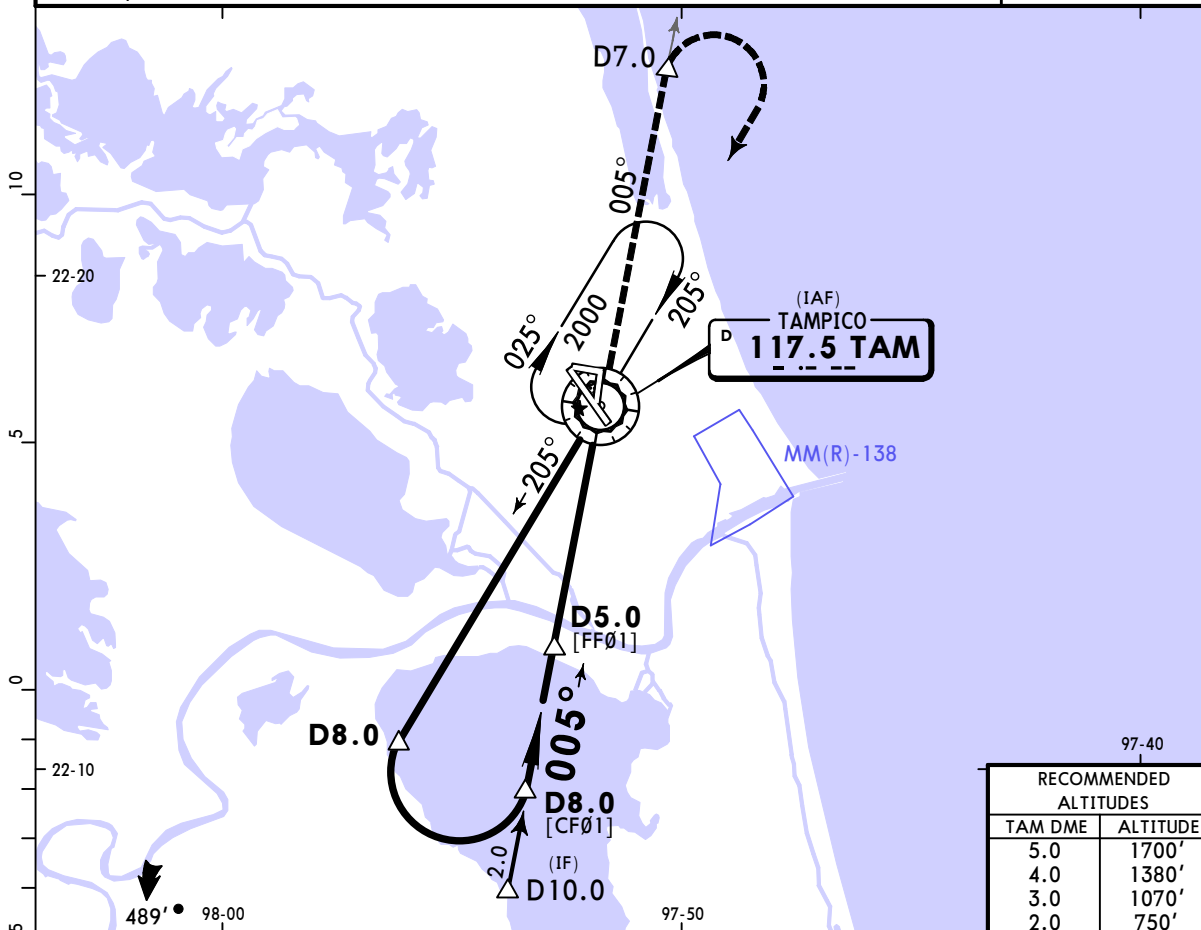


Gnd speed-Kts	70	90	100	120	140	160	REIL PAPI-L	TAM via 117.5 R-319
Descent Angle 3.00°	372	478	531	637	743	849		
MAP at VOR								

State				STRAIGHT-IN LANDING				CIRCLE-TO-LAND				
MDA(H) 600' (525')								Max Kts	MDA(H)			
A	V1		V1600m		90	680' (598')		V1	V1600m			
B	V1 1/2		V2400m		120	680' (598')		V1 1/2	V2400m			
C	V1 3/4		V2800m		140	680' (598')		V2	V3200m			
D					165	680' (598')						

16 FEB 24
MMTM/TAM Eff 22 Feb **JEPPESEN** **TAMPICO, MEXICO**
 GEN FRANCISCO JAVIER MINA INTL (13-10) CAT A, B & C **VOR Z Rwy 01**

*TAMPICO Approach				*TAMPICO Tower			
120.3				118.3			
VOR TAM 117.5	Final Apch Crs 005°	Minimum Alt D5.0 1700' (1628')	MDA(H) 660' (588')	Apt Elev 82' Rwy 72'	2000 MSA TAM VOR		
MISSED APCH: Climb outbound via TAM VOR R-005 to D7.0, then turn RIGHT within 10 NM to TAM VOR at minimum holding altitude.							
Alt Set: IN (MB on req)		Trans level: FL195		Trans alt: 18500'			
DME required.							



Gnd speed-Kts	70	90	100	120	140	160	↑ TAM via 117.5 D7.0 R-005
Descent Angle 3.00°	372	478	531	637	743	849	
MAP at VOR							
FAF to MAP	5.0	4:17	3:20	3:00	2:30	2:09	1:53

State STRAIGHT-IN LANDING				CIRCLE-TO-LAND			
MDA(H) 660' (588')				Max Kts — MDA(H) —			
A	V1		V1600m		90	680' (598') V1 V1600m	
B	V1		V2400m		120	680' (598') V1 1/2 V2400m	
C	V1 1/2		V2400m		140	680' (598') V1 1/2 V2400m	
D	NOT APPLICABLE				D	NOT APPLICABLE	

MMTM/TAM
GEN FRANCISCO
JAVIER MINA INTL

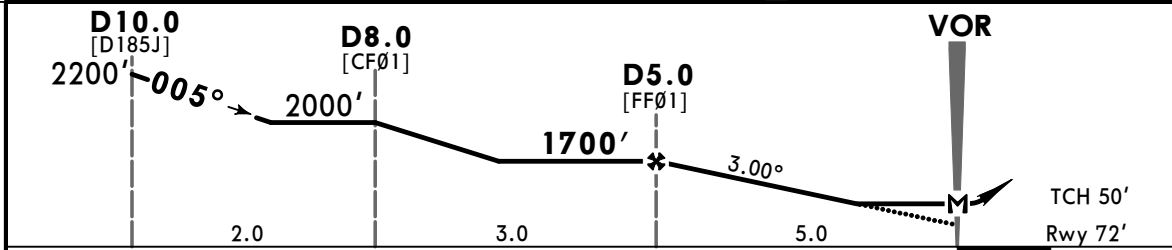
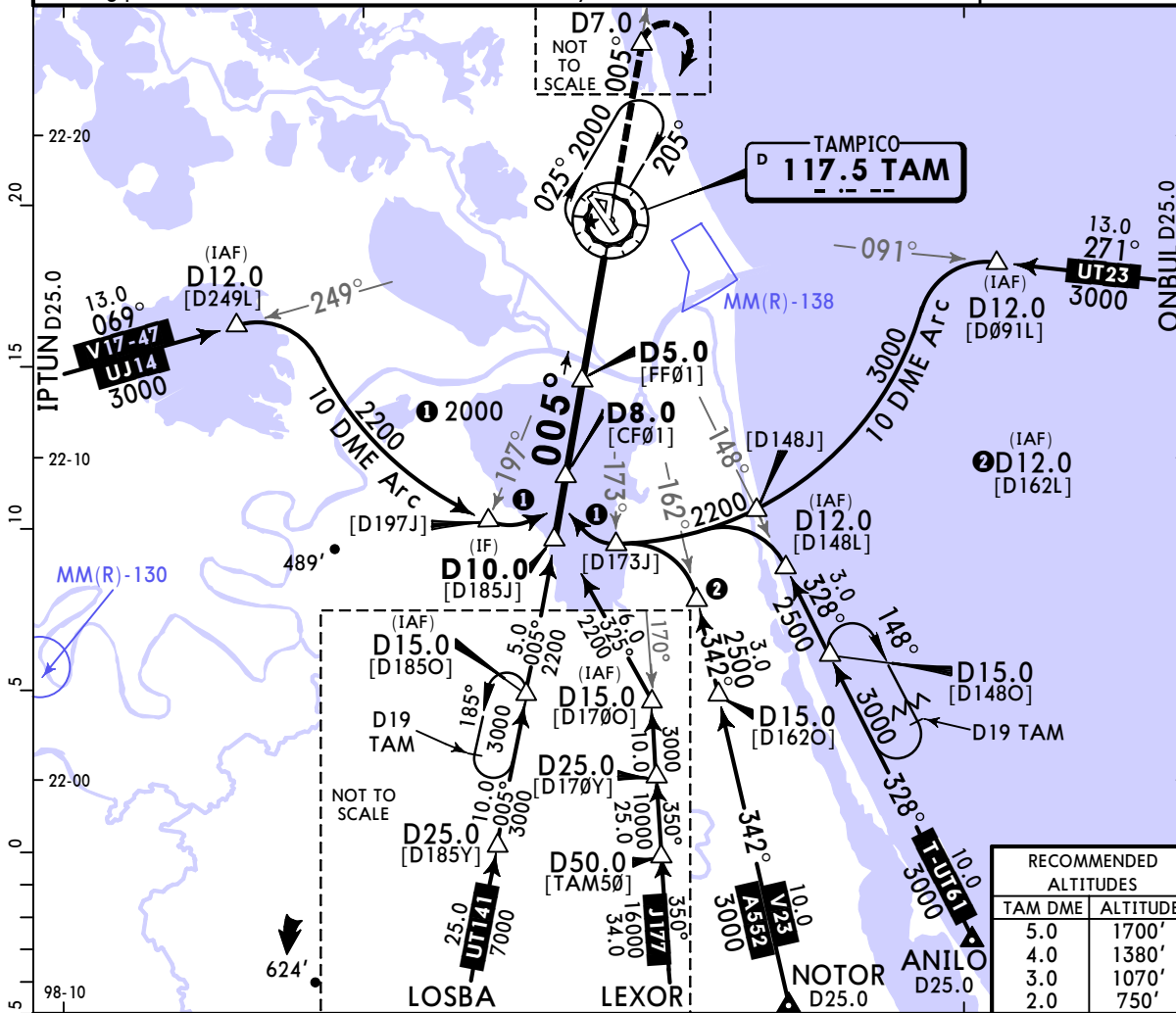
JEPPESSEN

TAMPICO, MEXICO

16 FEB 24
Eff 22 Feb (13-11)

CAT A, B & C **VOR Y Rwy 01**

*TAMPICO Approach				*TAMPICO Tower	
120.3				118.3	
VOR TAM 117.5	Final Apch Crs 005°	D5.0 1700' (1628')	MDA(H) 660' (588')	Apt Elev 82' Rwy 72'	2000 MSA TAM VOR
MISSED APCH: Climb outbound via TAM VOR R-005 to D7.0, then turn RIGHT within 10 NM to TAM VOR at minimum holding altitude.					
Alt Set: IN (MB on req)		Trans level: FL195		Trans alt: 18500'	
1. DME required. 2. In case of DME failure at any point of the procedure, maintain last altitude and proceed to the station in accordance with ATC instructions. 3. Do not use holding patterns at the same altitude simultaneously.					



Gnd speed-Kts	70	90	100	120	140	160	TAM via 117.5 D7.0 R-005
Descent Angle 3.00°	372	478	531	637	743	849	
MAP at VOR							
FAF to MAP	5.0	4:17	3:20	3:00	2:30	2:09	1:53

State	STRAIGHT-IN LANDING				CIRCLE-TO-LAND				
	MDA(H) 660' (588')				MDA(H)				
A	V1 V1600m				Max Kts 90	680' (598')			V1 V1600m
B	V1 V1600m				120	680' (598')			V1 1/2 V2400m
C	V1 1/2 V2400m				140	680' (598')			V1 1/2 V2400m
D	NOT APPLICABLE				D	NOT APPLICABLE			

MMTM/TAM
GEN FRANCISCO
JAVIER MINA INTL

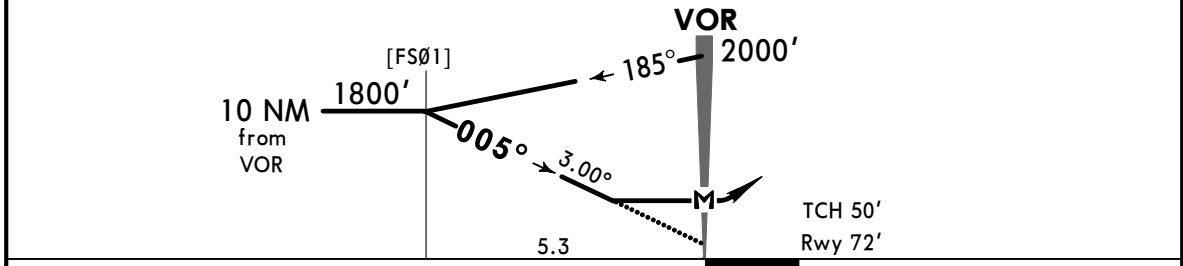
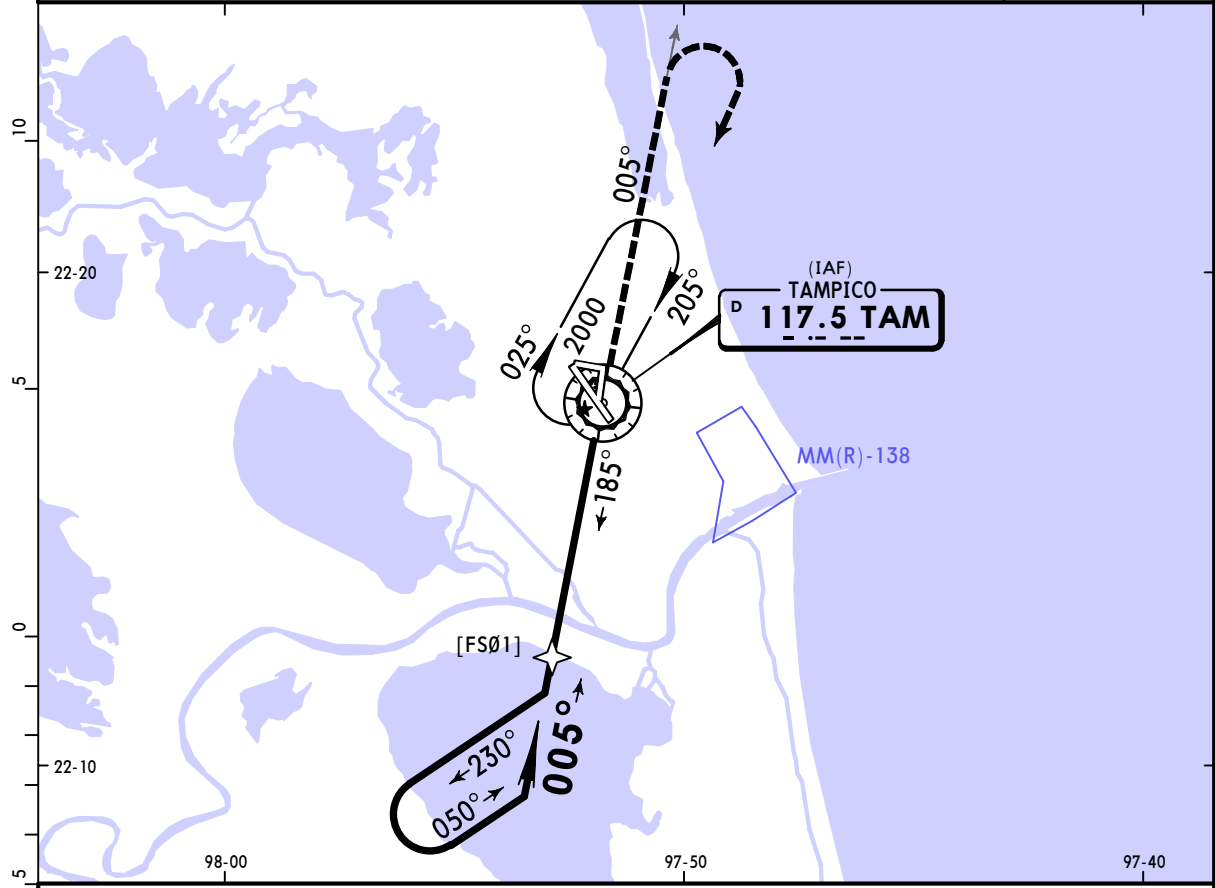


TAMPICO, MEXICO

16 FEB 24
Eff 22 Feb (13-12)

CAT A, B & C **VOR X Rwy 01**

*TAMPICO Approach 120.3			*TAMPICO Tower 118.3																	
VOR TAM 117.5	Final Apch Crs 005°	No FAF	MDA(H) 700' (628')	Apt Elev 82' Rwy 72'	2000 MSA TAM VOR															
MISSED APCH: Climb outbound via TAM VOR R-005, then turn RIGHT within 10 NM to TAM VOR at the minimum holding altitude.																				
MISSED APCH: Max Distance Outbound Track 7 NM <table border="1"> <tr> <td>Gnd speed-Kts</td> <td>80</td> <td>100</td> <td>120</td> <td>140</td> <td>160</td> <td>180</td> <td>200</td> </tr> <tr> <td>7 NM to turn</td> <td>5:15</td> <td>4:12</td> <td>3:30</td> <td>3:00</td> <td>2:38</td> <td>2:20</td> <td>2:06</td> </tr> </table>						Gnd speed-Kts	80	100	120	140	160	180	200	7 NM to turn	5:15	4:12	3:30	3:00	2:38	2:20
Gnd speed-Kts	80	100	120	140	160	180	200													
7 NM to turn	5:15	4:12	3:30	3:00	2:38	2:20	2:06													
Alt Set: IN (MB on req)		Trans level: FL195		Trans alt: 18500'																



Gnd speed-Kts	70	90	100	120	140	160	↑ via TAM 117.5 R-005
Descent Angle 3.00°	372	478	531	637	743	849	
MAP at VOR							

State			STRAIGHT-IN LANDING			CIRCLE-TO-LAND		
			MDA(H) 700' (628')					
A	V1	V1600m	Max Kts	MDA(H)	V1	V1600m		
B			90	700' (618')				
C	V1 3/4	V2800m	120	700' (618')	V1 3/4	V2800m		
D	NOT APPLICABLE		140	700' (618')	NOT APPLICABLE			