

General Information

Location: TORREON MEX
ICAO/IATA: MMTC / TRC
Lat/Long: N25° 34.1', W103° 24.6'
Elevation: 3691 ft

Airport Use: Public
Daylight Savings: Not Observed
UTC Conversion: +6:00 = UTC
Magnetic Variation: 6.0° E

Fuel Types: 100-130 Octane, Jet A
Repair Types: Minor Airframe, Minor Engine
Customs: Yes
Airport Type: IFR
Landing Fee: No
Control Tower: Yes
Jet Start Unit: No
LLWS Alert: No
Beacon: Yes

Sunrise: 1258 Z
Sunset: 0018 Z

Runway Information

Runway: 08
Length x Width: 4813 ft x 98 ft
Surface Type: asphalt
TDZ-Elev: 3683 ft

Runway: 13
Length x Width: 9039 ft x 148 ft
Surface Type: asphalt
TDZ-Elev: 3691 ft
Lighting: Edge

Runway: 26
Length x Width: 4813 ft x 98 ft
Surface Type: asphalt
TDZ-Elev: 3681 ft

Runway: 31
Length x Width: 9039 ft x 148 ft
Surface Type: asphalt

TDZ-Elev: 3679 ft
Lighting: Edge

Communication Information

Torreon Tower: 118.500
Torreon Approach: 119.600
Mazatlan Control ACC: 124.200 RCO
Monterrey Control ACC: 126.400 RCO
Torreon Information Information: 122.300 AFIS

TMA

TORREON, MEXICO



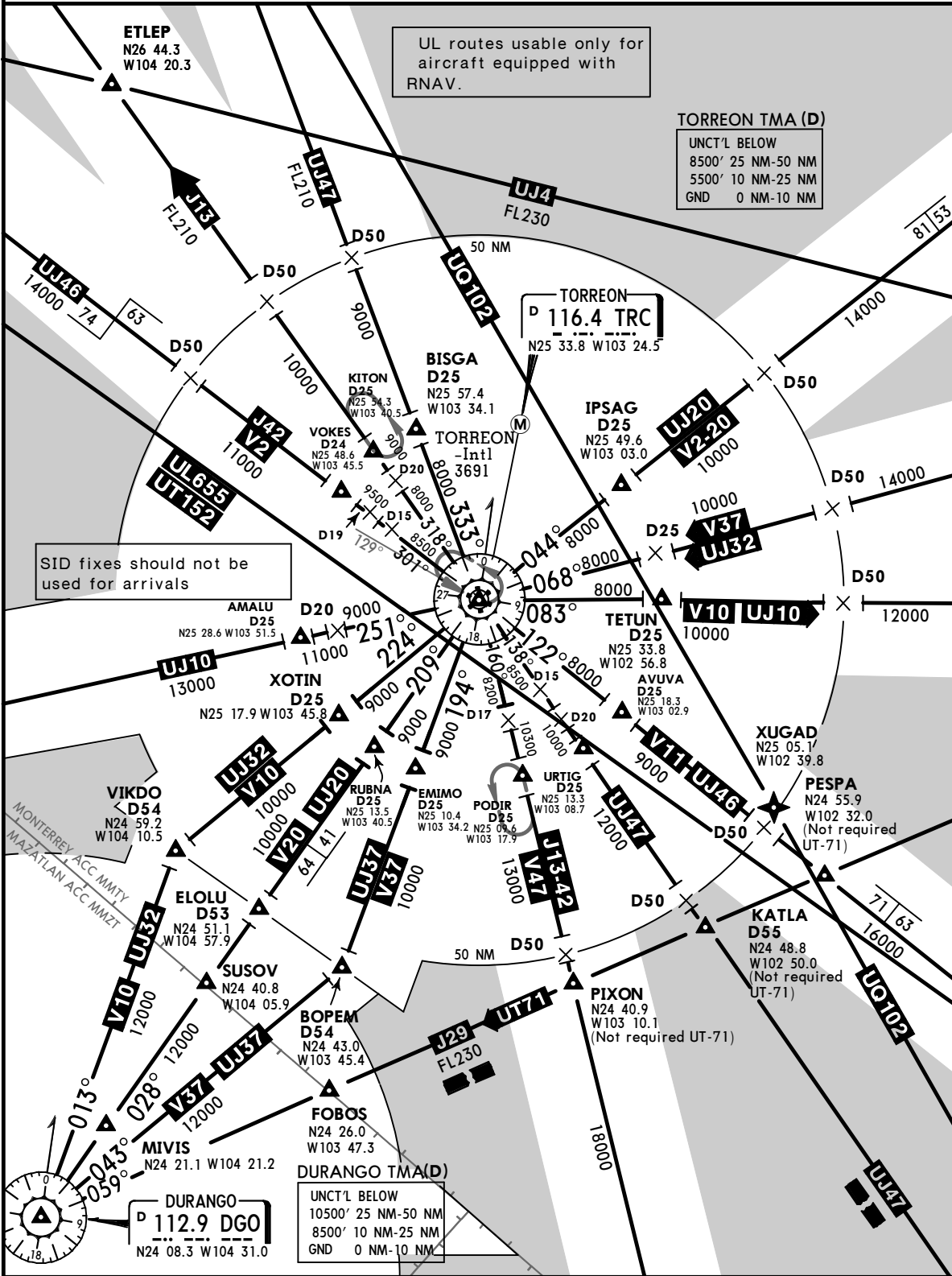
24 NOV 23 10-1B

TORREON INTL

*TORREON Approach
119.6

SPEED RESTRICTIONS WITHIN MEXICO AIRSPACE

- Maximum IAS unless otherwise depicted or authorized by ATC
- Below 3000' AGL within 10NM of any airport.....200 KTS
 - Below 10000' MSL within Mexico Airspace.....250 KTS
 - Below 10000' AGL within 30NM of any airport.....250 KTS
- WITHIN TORREON TMA**
- At or below 6700' MSL within 10NM of TRC VORDME.....200 KTS
 - At or below 13700' MSL within 30NM of TRC VORDME.....250 KTS
- WITHIN DURANGO TMA**
- At or below 9100' MSL within 10NM of DGO VORDME.....200 KTS
 - At or below 16100' MSL within 30NM of DGO VORDME.....250 KTS



CHANGES: ATS system.

© JEPPESEN, 1999, 2023. ALL RIGHTS RESERVED.

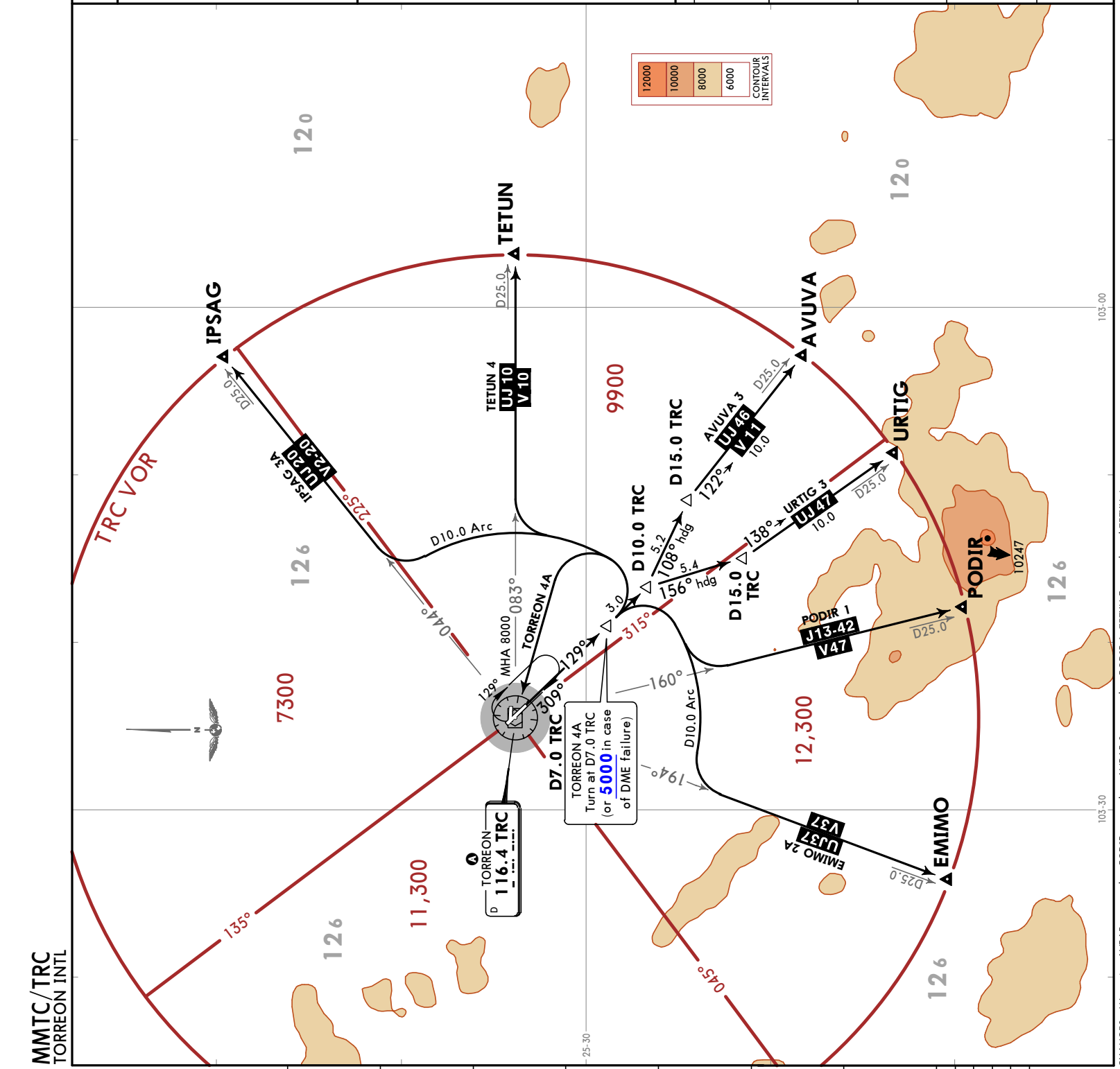
Apt Elev 3688
 Trans alt: 18500

AVUVA 3 (AVUVA3) [AVUVA3]
EMIMO 2A (EMIMO2A) [EMIMO2A]
IPSAG 3A (IPSAG3A) [IPSAG3A]
PODIR 1 (PODIR1) [PODIR1]
TETUN 4 (TETUN4) [TETUN4]
TORREON 4A (TRC4A) [TRC4A]
URTIG 3 (URTIG3) [URTIG3]
DEPARTURES (RWY 13)

	MINIMUM CROSSING ALTITUDE	
MOV	V-2-20	UJ-20 7400
SLW	V-10	UJ-10 7400
CDR	V-11	UJ-46 7400
SLP	V-47	UJ-47 9600
ZCL	V-37	J-13-42 7400
DGO	V-20	UJ-20 7400
DGO	V-10	UJ-32 7900
CUL	V-2	UJ-10 7400
ELQ		J-42, UJ-46 7400
CIU		J-13 7400
CUU		UJ-47 7400

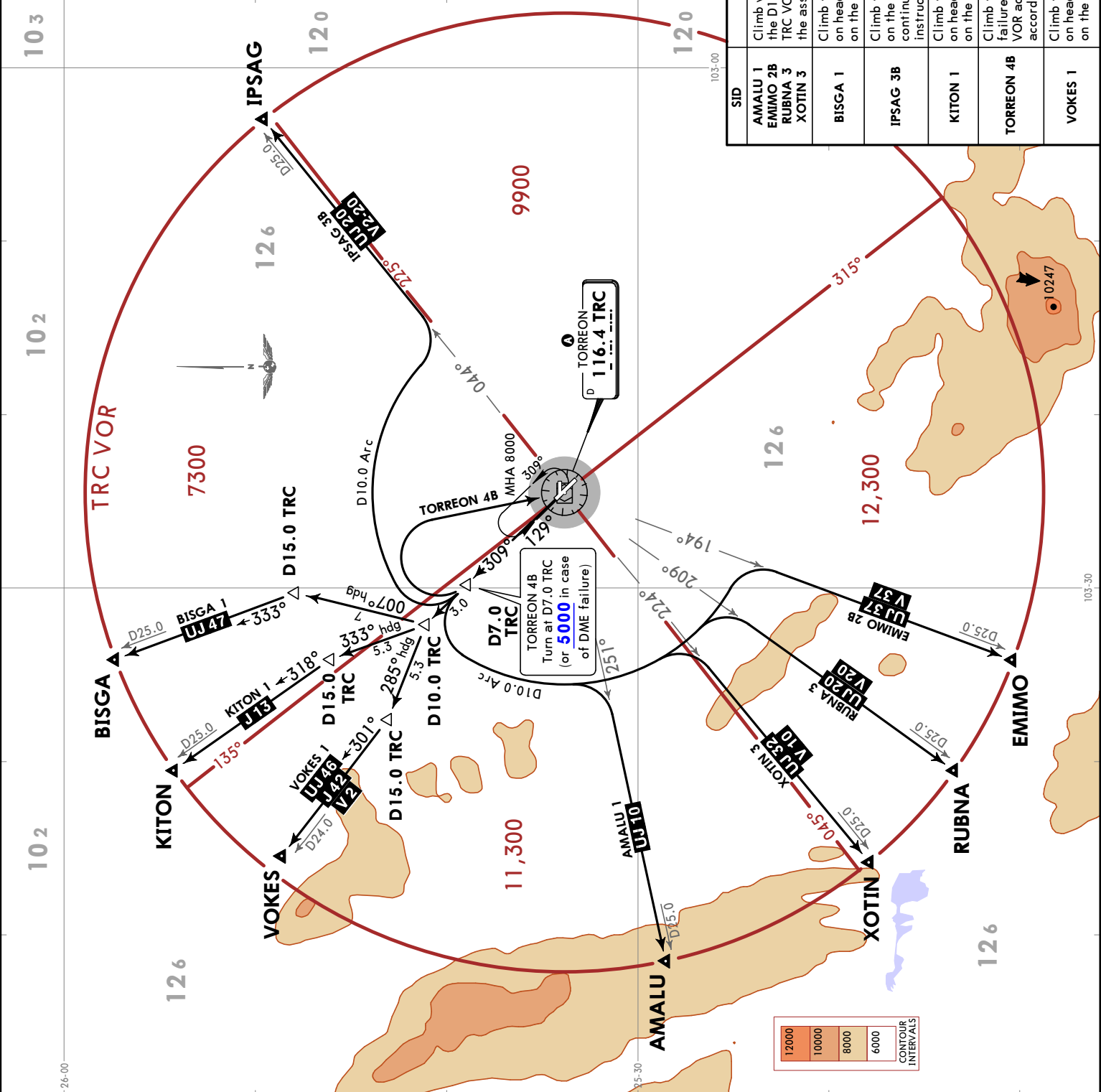
These SIDs require minimum climb gradients of:
 EMIMO 2A: 240 (3.94%) per NM to 9000.
 PODIR 1 and URTIG 3: 320 (5.26%) per NM to 12000.
 Gnd speed-KT 75 100 150 200 250 300
 240 per NM 300 400 600 800 1000 1200
 320 per NM 400 533 800 1067 1333 1600

SID	INITIAL CLIMB
AVUVA 3	Climb via TRC R129 to D10.0 TRC, then turn LEFT and proceed on a 108° heading to intercept TRC R122 to AVUVA, and continue on the assigned route or in accordance with ATC instructions.
EMIMO 2A PODIR 1	Climb via TRC R129 to D7.0 TRC, then turn RIGHT and proceed on the D10.0 Arc to intercept the corresponding radial from TRC VOR to PODIR or EMIMO and continue on the assigned route or in accordance with ATC instructions.
IPSAG 3A TETUN 4	Climb via TRC R129 to D7.0 TRC, then turn LEFT and proceed on the D10.0 Arc to intercept the corresponding radial from TRC VOR to IPSAG or TETUN and continue on the assigned route or in accordance with ATC instructions.
TORREON 4A	Climb via TRC R129 to D7.0 TRC (or 5000 in case of DME failure), then turn LEFT within 10.0 NM to TRC VOR. Cross TRC VOR at the MCA for the assigned route or in accordance with ATC instructions.
URTIG 3	Climb via TRC R129 to D10.0 TRC, then turn RIGHT and proceed on a 156° heading to intercept TRC R138 to URTIG and continue on the assigned route or in accordance with ATC instructions.



Apt Elev 3688	Trans alt: 18500																																													
AMALU 1 (AMALU1) [AMALU1] BISGA 1 (BISGA1) [BISGA1] EMIMO 2B (EMIMO2B) [EMIMO2B] IPSAG 3B (IPSAG3B) [IPSAG3B] KITON 1 (KITON1) [KITON1] RUBNA 3 (RUBNA3) [RUBNA3] TORREON 4B (TRC4B) [TRC4B] VOKES 1 (VOKES1) [VOKES1] XOTIN 3 (XOTIN3) [XOTIN3]																																														
DEPARTURES (RWY 31)																																														
<table border="1"> <thead> <tr> <th>A</th> <th>MINIMUM CROSSING ALTITUDE</th> <th>7400</th> </tr> </thead> <tbody> <tr> <td>MOV</td> <td>V-2-20</td> <td>7400</td> </tr> <tr> <td>SLW</td> <td>V-10</td> <td>7400</td> </tr> <tr> <td>CDR</td> <td>UJ-46</td> <td>7400</td> </tr> <tr> <td>SLP</td> <td>UJ-47</td> <td>9600</td> </tr> <tr> <td>ZCL</td> <td>V-47</td> <td>9600</td> </tr> <tr> <td>DGO</td> <td>J-13-42</td> <td>7400</td> </tr> <tr> <td>DGO</td> <td>V-37</td> <td>7400</td> </tr> <tr> <td>DGO</td> <td>V-20</td> <td>7400</td> </tr> <tr> <td>DGO</td> <td>V-10</td> <td>7400</td> </tr> <tr> <td>CUL</td> <td>UJ-32</td> <td>7900</td> </tr> <tr> <td>ELQ</td> <td>UJ-10</td> <td>7400</td> </tr> <tr> <td>CUU</td> <td>J-42, UJ-46</td> <td>7400</td> </tr> <tr> <td>CUU</td> <td>J-13</td> <td>7400</td> </tr> <tr> <td>CUU</td> <td>UJ-47</td> <td>7400</td> </tr> </tbody> </table>	A	MINIMUM CROSSING ALTITUDE	7400	MOV	V-2-20	7400	SLW	V-10	7400	CDR	UJ-46	7400	SLP	UJ-47	9600	ZCL	V-47	9600	DGO	J-13-42	7400	DGO	V-37	7400	DGO	V-20	7400	DGO	V-10	7400	CUL	UJ-32	7900	ELQ	UJ-10	7400	CUU	J-42, UJ-46	7400	CUU	J-13	7400	CUU	UJ-47	7400	
A	MINIMUM CROSSING ALTITUDE	7400																																												
MOV	V-2-20	7400																																												
SLW	V-10	7400																																												
CDR	UJ-46	7400																																												
SLP	UJ-47	9600																																												
ZCL	V-47	9600																																												
DGO	J-13-42	7400																																												
DGO	V-37	7400																																												
DGO	V-20	7400																																												
DGO	V-10	7400																																												
CUL	UJ-32	7900																																												
ELQ	UJ-10	7400																																												
CUU	J-42, UJ-46	7400																																												
CUU	J-13	7400																																												
CUU	UJ-47	7400																																												

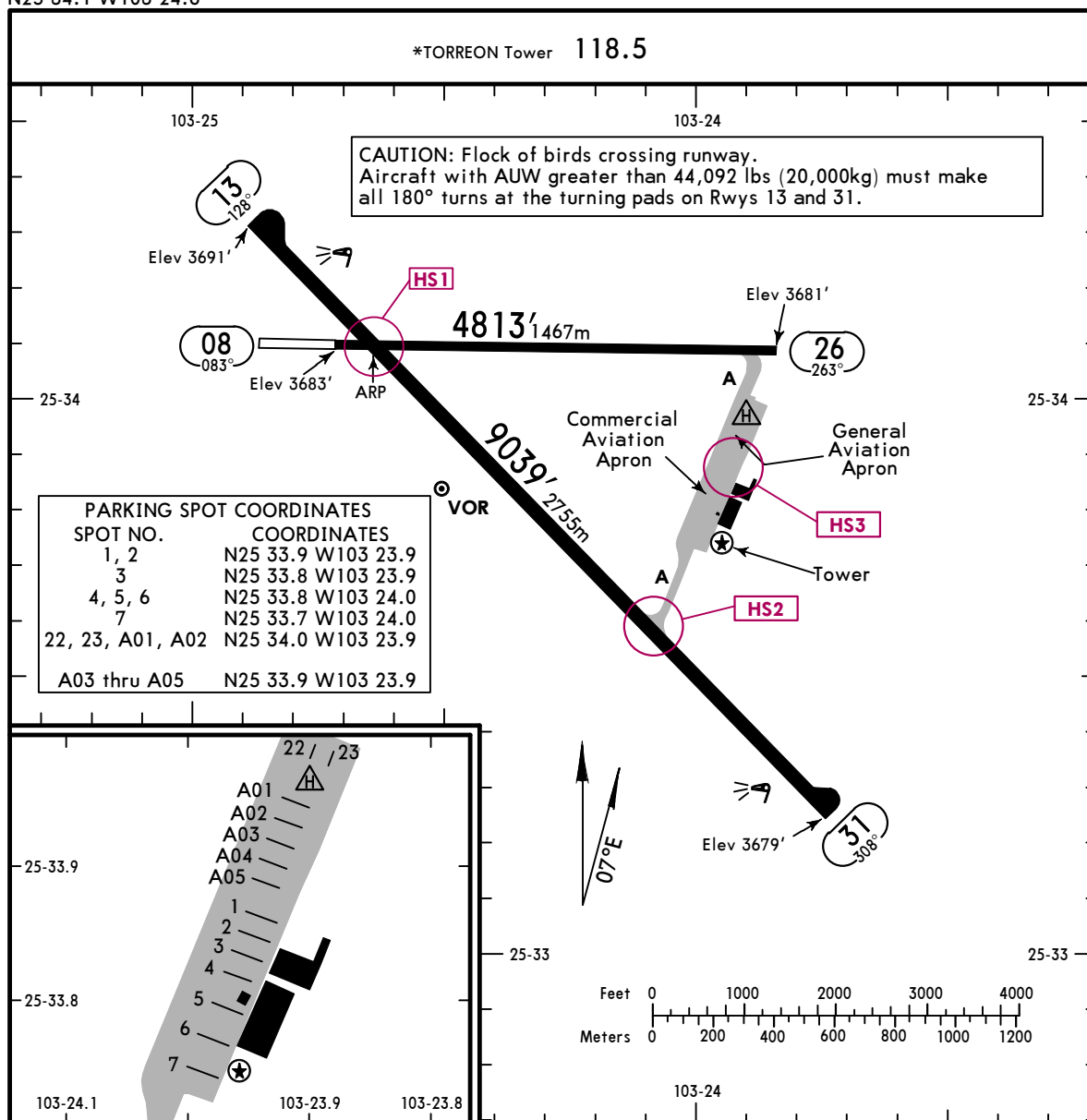
SID	INITIAL CLIMB
AMALU 1 EMIMO 2B RUBNA 3 XOTIN 3	Climb via TRC R309 to D7.0 TRC, then turn LEFT and proceed on the D10.0 Arc TRC to intercept the corresponding radial from TRC VOR to AMALU, EMIMO, RUBNA or XOTIN and continue on the assigned route or according to ATC instructions.
BISGA 1	Climb via TRC R309 to D10.0 TRC, then turn RIGHT and proceed on heading 007° to intercept TRC R333 to BISGA and continue on the assigned route or according to ATC instructions.
IPSAG 3B	Climb via TRC R309 to D7.0 TRC, then turn RIGHT and proceed on the D10.0 Arc TRC to intercept TRC R044 to IPSAG and continue on the assigned route or according to ATC instructions.
KITON 1	Climb via TRC R309 to D10.0 TRC, then turn RIGHT and proceed on heading 333° to intercept TRC R318 to KITON and continue on the assigned route or according to ATC instructions.
TORREON 4B	Climb via TRC R309 to D7.0 TRC (or 5000 in case of DME failure), then turn RIGHT within 10 NM to TRC VOR. Cross TRC VOR according to the MCA of the assigned route or according to ATC instructions.
VOKES 1	Climb via TRC R309 to D10.0 TRC, then turn LEFT and proceed on heading 285° to intercept TRC R301 to VOKES and continue on the assigned route or according to ATC instructions.



MMTC/TRC
 Apt Elev **3691'**
 N25 34.1 W103 24.6

JEPPESEN
 18 MAR 22 **(10-9)** Eff 24 Mar

TORREON, MEXICO
TORREON INTL



ADDITIONAL RUNWAY INFORMATION

RWY	USABLE LENGTHS	LANDING BEYOND	TAKE-OFF	WIDTH
08 26				98' 30m
13 31	HIRL REIL PAPI-L (angle 3.0°)			148' 45m

RUNWAY INCURSION HOT SPOTS HS

For information only, not to be construed as ATC instructions.

- HS1** Acft in overnight operations must not taxi on Rwy 08-26, exit on Twy A.
- HS2** Acft on Twy A shall remain at the holding point until the ATC clearance to enter Rwy 13-31 is provided.
- HS3** Acft coming from/going to hangar ICCS must not taxi on commercial aviation positions 1 and 2.

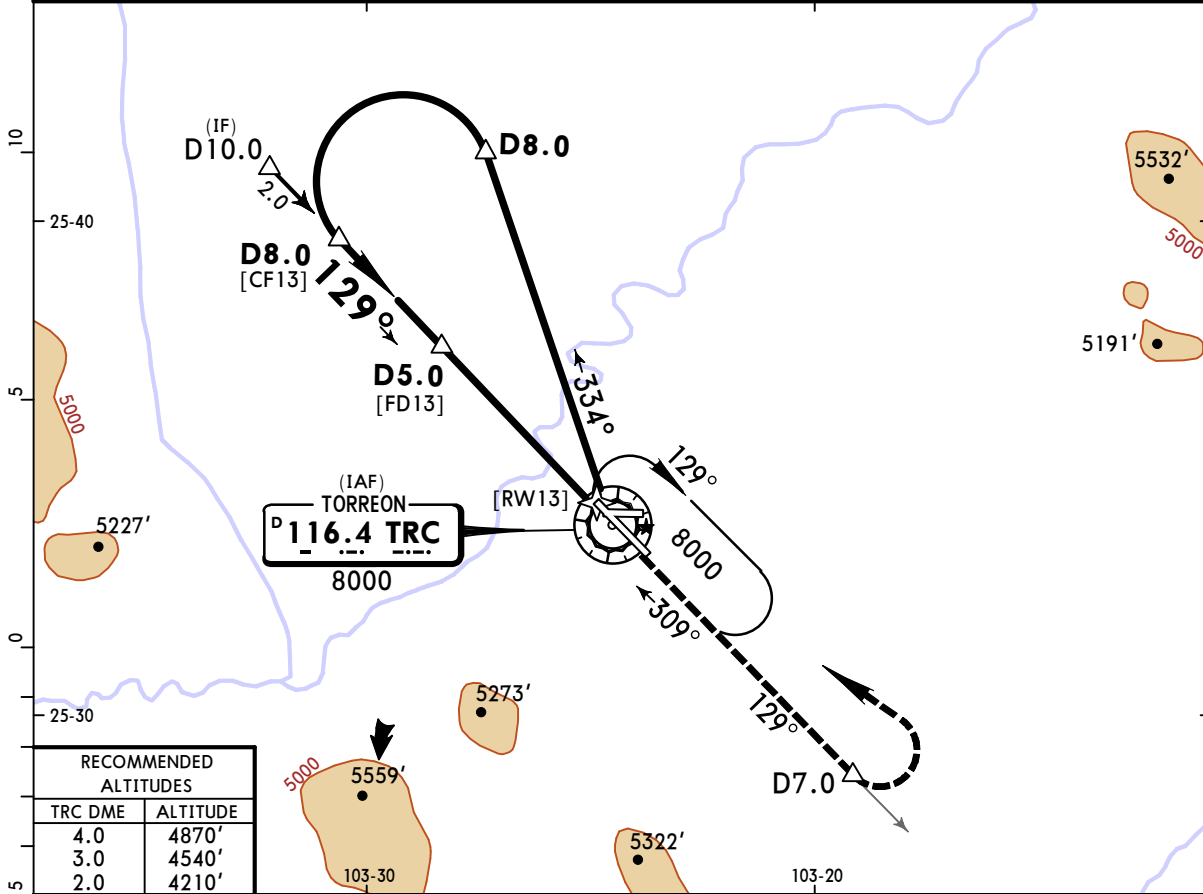
	TAKE-OFF		FOR FILING AS ALTERNATE	
	Rwys 13, 31	Rwys 08, 26		A B C D
		DAY	NIGHT	
1 & 2 Eng	1	VFR	NOT APPLICABLE	
3 & 4 Eng	1/2			

MMTC/TRC
TORREON INTL

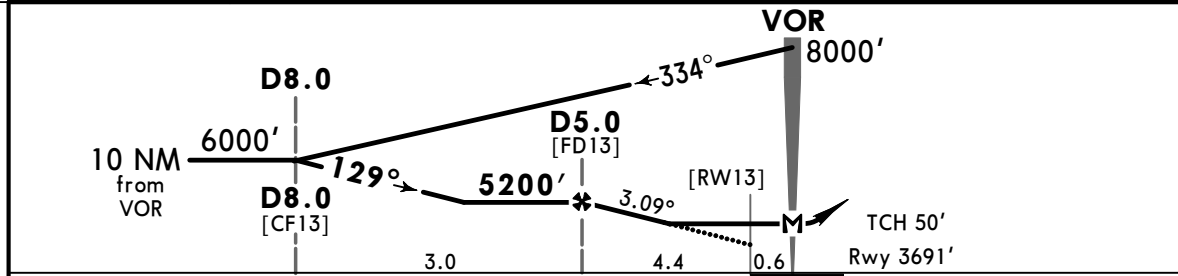
JEPPESEN
18 MAR 22 **13-1** Eff 24 Mar

TORREON, MEXICO
VOR DME 1 Rwy 13

*TORREON Approach				*TORREON Tower	
119.6				118.5	
VOR TRC 116.4	Final Apch Crs 129°	D5.0 5200' (1509')	MDA(H) 4120' (429')	Apt Elev 3691' Rwy 3691'	
MISSED APCH: Climb outbound on TRC VOR R-129 to D7.0, then turn LEFT within 10 NM to TRC VOR at the minimum holding altitude.					
Alt Set: IN (MB on req)		Trans level: FL 195		Trans alt: 18500'	



RECOMMENDED ALTITUDES	
TRC DME	ALTITUDE
4.0	4870'
3.0	4540'
2.0	4210'



Gnd speed-Kts	70	90	100	120	140	160	REIL PAPI-L	↑ on 116.4 D7.0
Descent Angle 3.09°	383	492	547	656	765	875		
MAP at VOR								
FAF to MAP	5.0	4:17	3:20	3:00	2:30	2:09	1:53	

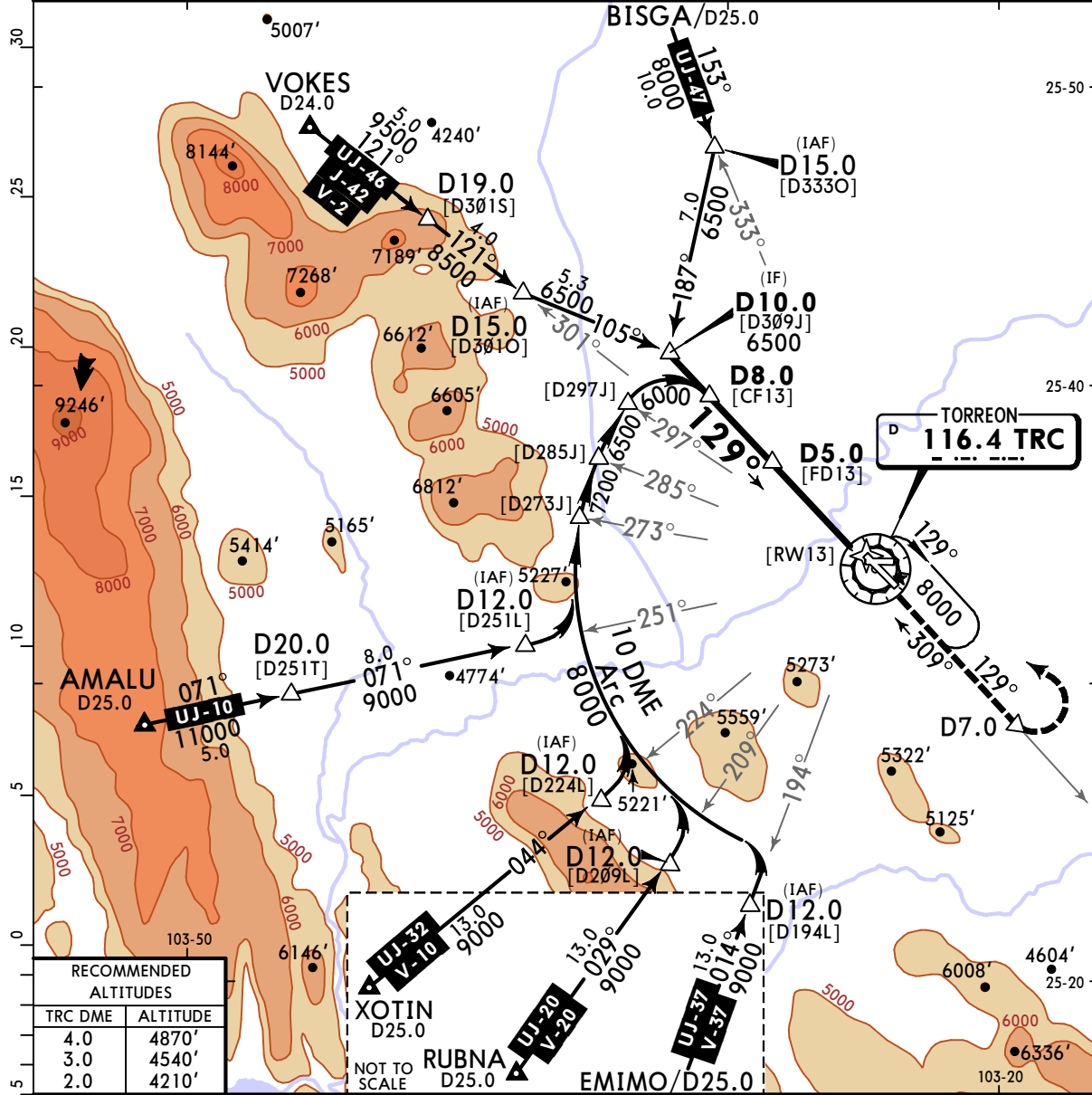
STRAIGHT-IN LANDING RWY 13			CIRCLE-TO-LAND		
MDA(H) 4120' (429')			MDA(H) _____		
A	1	Max Kts	_____		
B			90	4300' (609') -1	
C	1¼	140	4300' (609') -1¾		
D	1½	165	5260' (1569') -3		

MMTC/TRC TORREON INTL

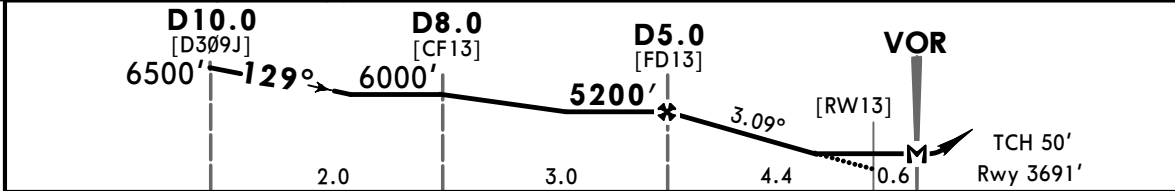
JEPPesen
18 MAR 22 **13-2** Eff 24 Mar

TORREON, MEXICO VOR DME 2 Rwy 13

*TORREON Approach			*TORREON Tower		
119.6			118.5		
VOR TRC 116.4	Final Apch Crs 129°	D5.0 5200' (1509')	MDA(H) 4120' (429')	Apt Elev 3691'	Rwy 3691'
MISSED APCH: Climb outbound on TRC VOR R-129 to D7.0, then turn LEFT within 10 NM to TRC VOR at the minimum holding altitude.					
Alt Set: IN (MB on req) Trans level: FL 195 Trans alt: 18500'					
In case of DME failure during the procedure maintain last assigned altitude and proceed to the station in accordance with ATC instructions.					



RECOMMENDED ALTITUDES	
TRC DME	ALTITUDE
4.0	4870'
3.0	4540'
2.0	4210'



Gnd speed-Kts	70	90	100	120	140	160	REIL PAPI-L	↑	TRC on 116.4 D7.0
Descent Angle 3.09°	383	492	547	656	765	875			
MAP at VOR									
FAF to MAP	5.0	4:17	3:20	3:00	2:30	2:09	1:53		

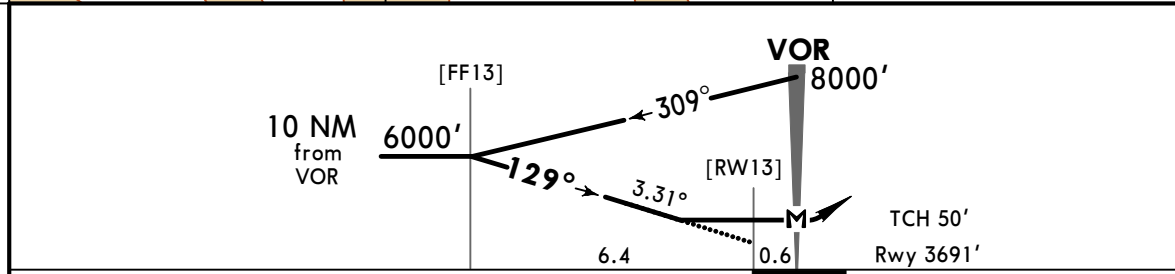
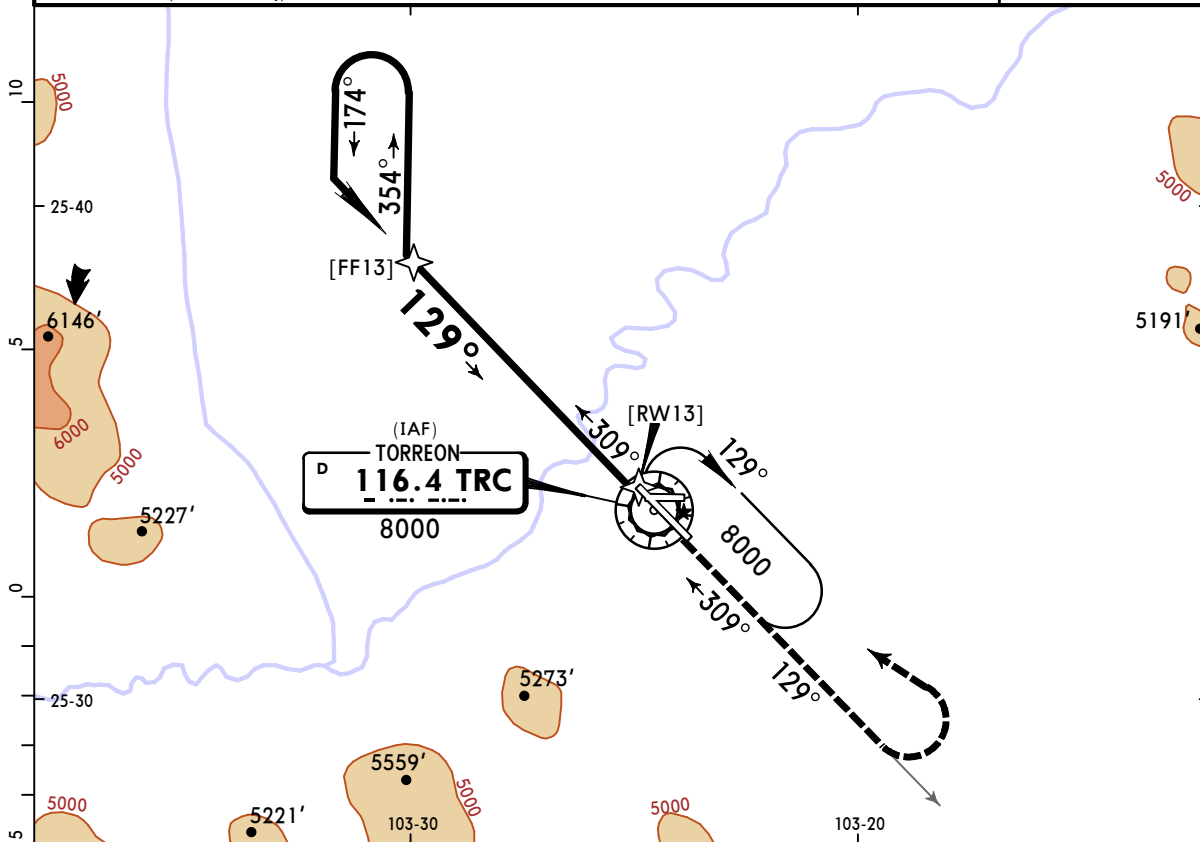
STRAIGHT-IN LANDING RWY 13			CIRCLE-TO-LAND		
MDA(H) 4120' (429')			MDA(H)		
A	1	90	4300' (609') - 1		
B	1	120	4300' (609') - 1		
C	1 1/4	140	4300' (609') - 1 3/4		
D	1 1/2	165	5260' (1569') - 3		

MMTC/TRC TORREON INTL

JEPPESEN
10 MAY 24 **(13-3)** Eff 16 May

TORREON, MEXICO VOR Rwy 13

*TORREON Approach			*TORREON Tower		
119.6			118.5		
VOR TRC 116.4	Final Apch Crs 129°	No FAF	MDA(H) 4400' (709')	Apt Elev 3691' Rwy 3691'	
MISSED APCH: Climb outbound on TRC VOR R-129, then turn LEFT within 10 NM to TRC VOR at the minimum holding altitude.					
MISSED APCH: Max Distance Outbound Track 7 NM					
Gnd speed-Kts	80	100	120	140	
Time	5:15	4:12	3:30	3:00	2:38
Alt Set: IN (MB on req)		Trans level: FL 195		Trans alt: 18500'	



Gnd speed-Kts	70	90	100	120	140	160	REIL PAPI-L	↑ on TRC 116.4 R-129
Descent Angle	3.31°	410	527	586	703	820		
MAP at VOR								

STRAIGHT-IN LANDING RWY 13			CIRCLE-TO-LAND		
MDA(H) 4400' (709')			MDA(H)		
A			Max Kts		
B	1		90	4400' (709') -1	
C	2		120	4400' (709') -2	
D	2 1/4		140	4400' (709') -3	
			165	5260' (1569') -3	

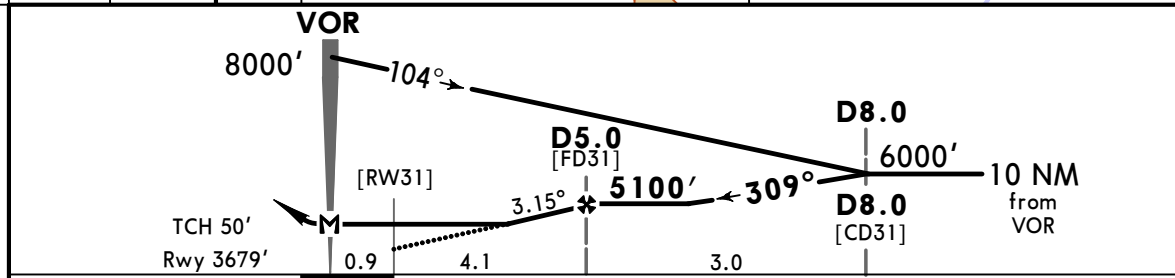
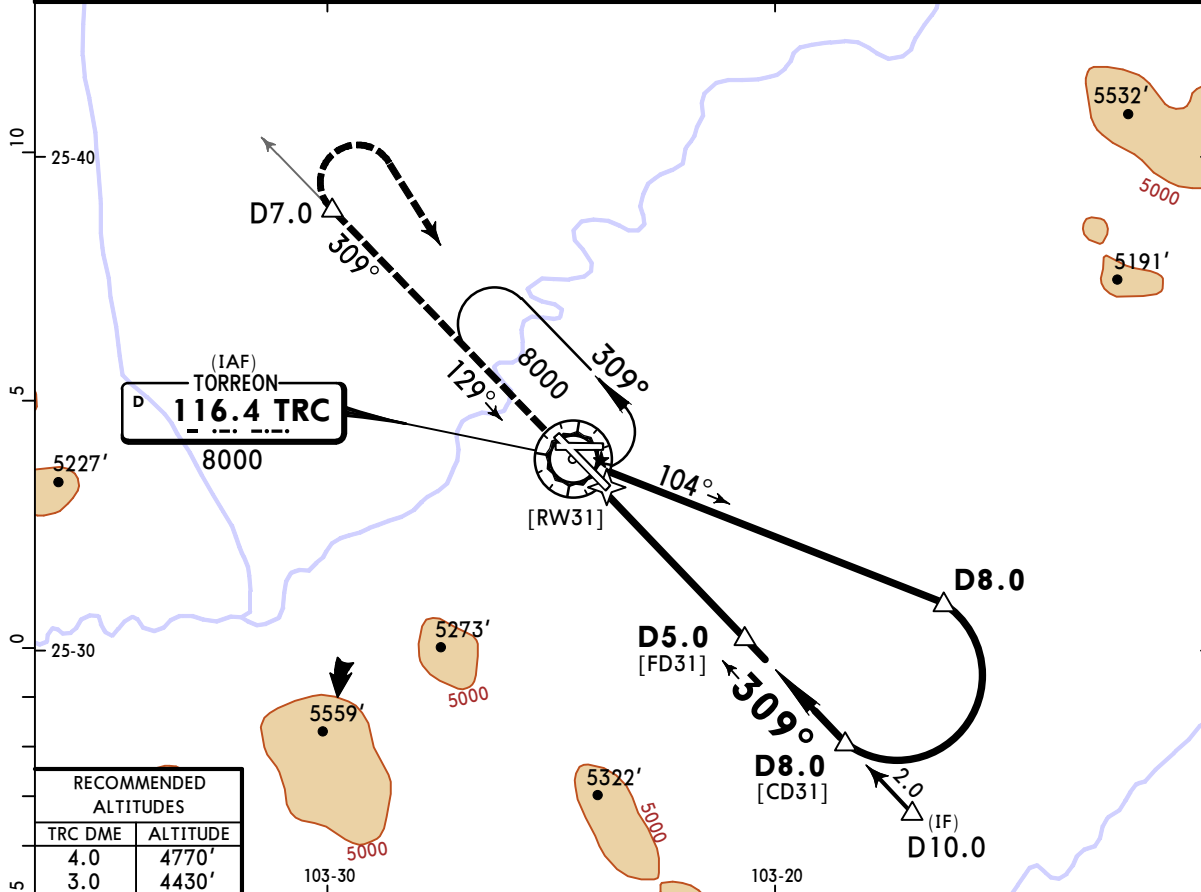
CHANGES: Descent angle, ground speed box.

MMTC/TRC TORREON INTL

JEPESEN
10 MAY 24 **13-4** Eff 16 May

TORREON, MEXICO VOR DME 1 Rwy 31

*TORREON Approach				*TORREON Tower		
119.6				118.5		
VOR TRC 116.4	Final Apch Crs 309°	D5.0 5100' (1421')	MDA(H) 4120' (441')	Apt Elev 3691' Rwy 3679'		
MISSED APCH: Climb outbound on TRC VOR R-309 to D7.0, then turn RIGHT within 10 NM to TRC VOR at the minimum holding altitude.						
Alt Set: IN (MB on req)		Trans level: FL 195		Trans alt: 18500'		MSA TRC VOR



Gnd speed-Kts	70	90	100	120	140	160	REIL PAPI-L	↑ on 116.4 R-309	D7.0
Descent Angle 3.15°	390	502	557	669	780	892			
MAP at VOR	5.0	4:17	3:20	3:00	2:30	2:09			

STRAIGHT-IN LANDING RWY 31				CIRCLE-TO-LAND			
MDA(H) 4120' (441')				MDA(H)			
A				Max Kts			
B		1		90		4300' (609')	-1
C		1¼		140		4300' (609')	-1¾
D		1½		165		5260' (1569')	-3

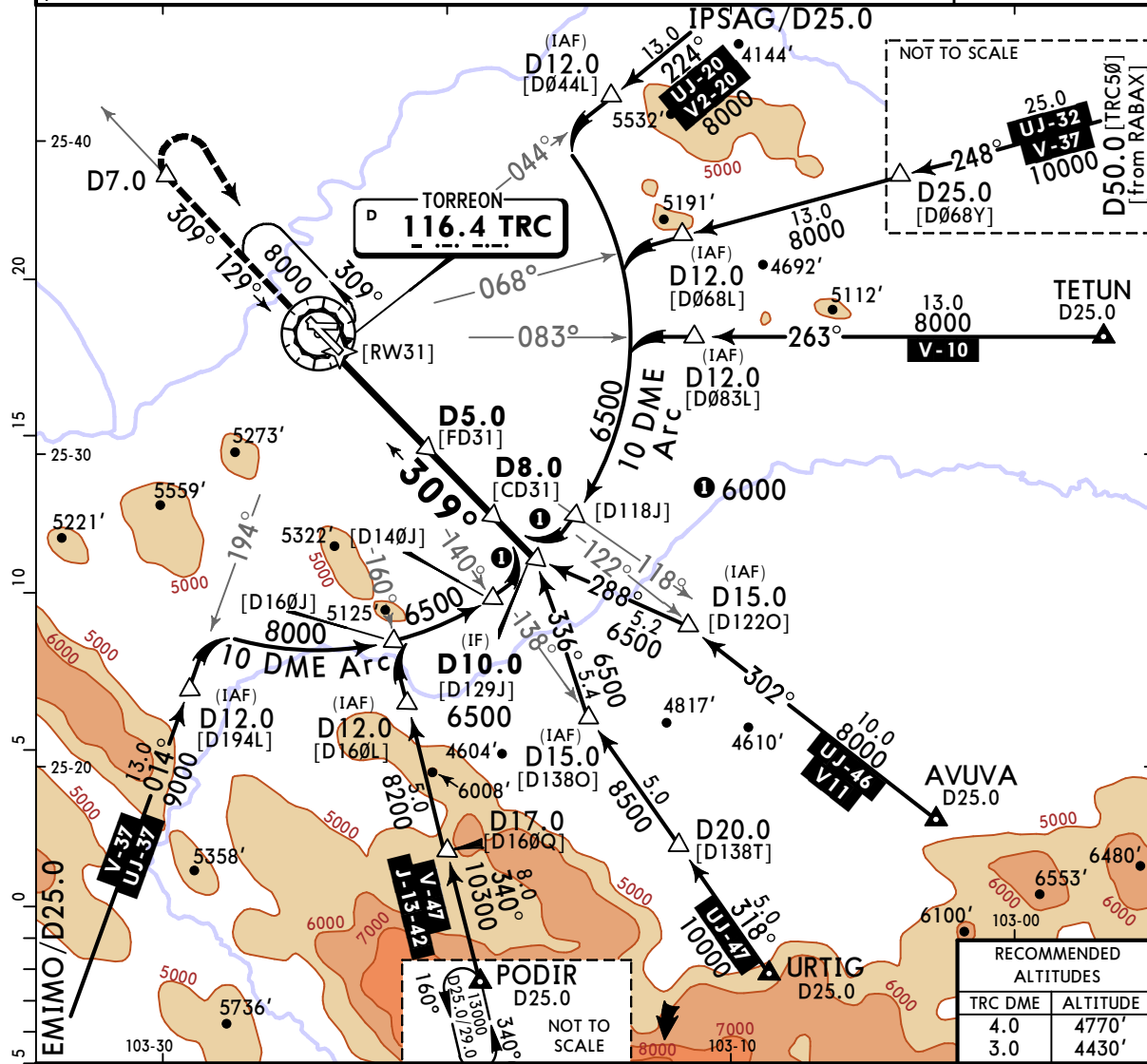
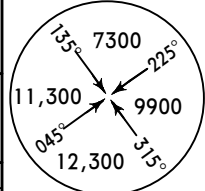
CHANGES: None.

MMTC/TRC TORREON INTL

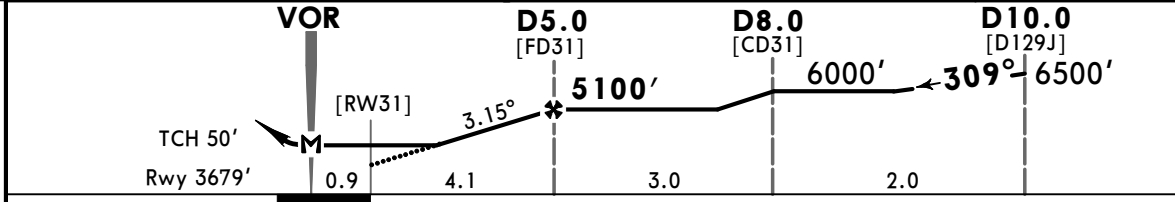
JEPPESSEN
18 MAR 22 **(13-5)** Eff 24 Mar

TORREON, MEXICO VOR DME 2 Rwy 31

*TORREON Approach 119.6				*TORREON Tower 118.5	
VOR TRC 116.4	Final Apch Crs 309°	D5.0 5100' (1421')	MDA(H) 4120' (441')	Apt Elev 3691' Rwy 3679'	
MISSED APCH: Climb outbound on TRC VOR R-309 to D7.0, then turn RIGHT within 10 NM to TRC VOR at the minimum holding altitude.					
Alt Set: IN (MB on req)		Trans level: FL 195		Trans alt: 18500'	
In case of DME failure during the procedure maintain last assigned altitude and proceed to the station in accordance with ATC instructions.					



RECOMMENDED ALTITUDES	
TRC DME	ALTITUDE
4.0	4770'
3.0	4430'



Gnd speed-Kts	70	90	100	120	140	160	REIL PAPI-L	↑ TRC on 116.4 R-309	D7.0	
Descent Angle	3.15°	390	502	557	669	780				892
MAP at VOR										
FAF to MAP	5.0	4:17	3:20	3:00	2:30	2:09				1:53

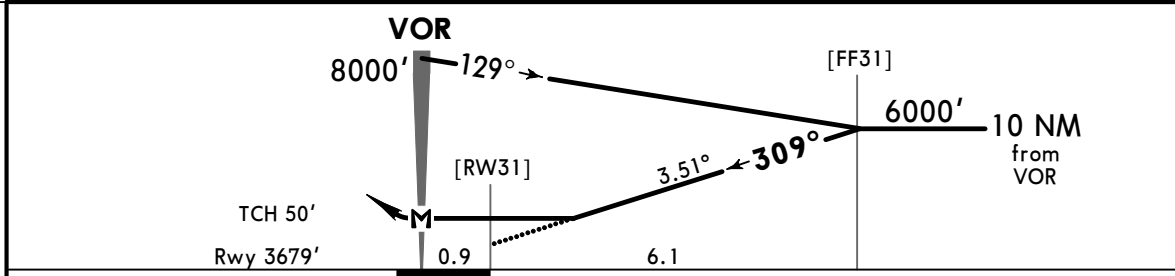
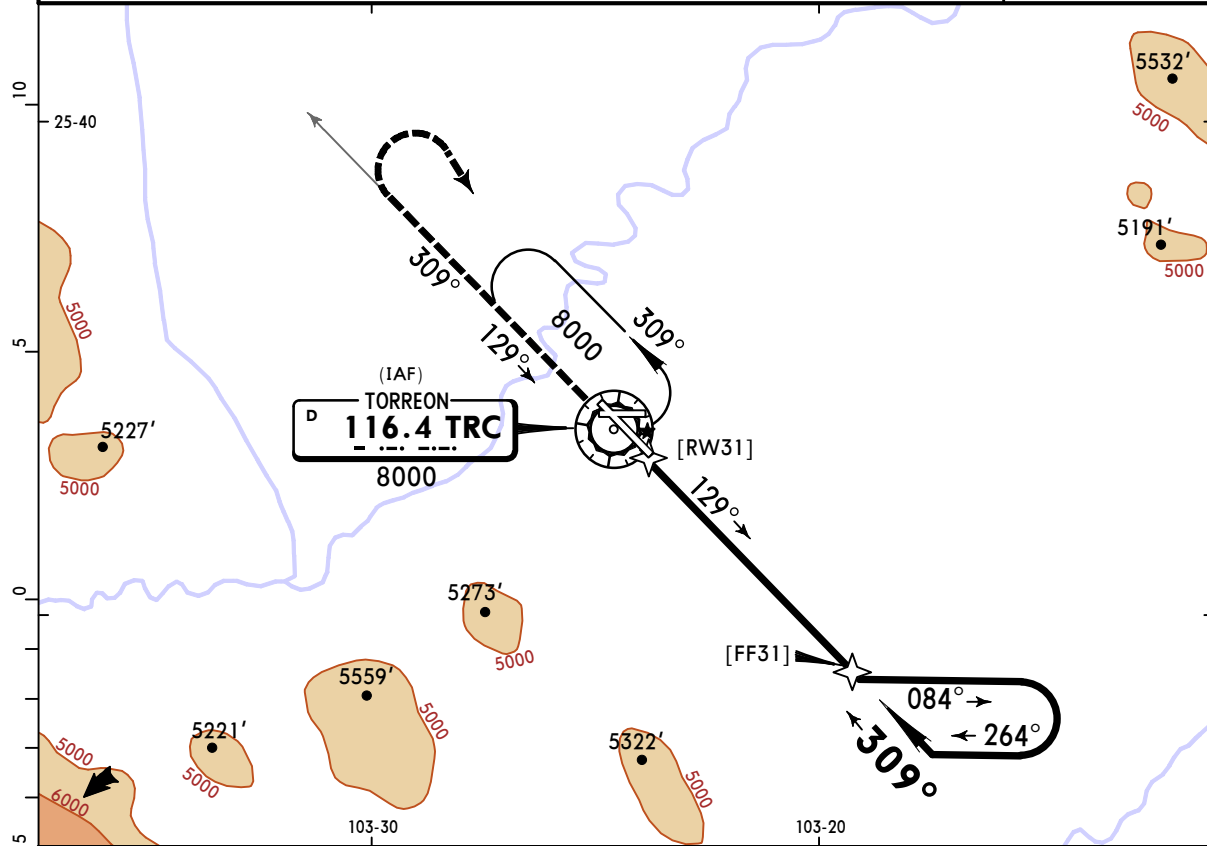
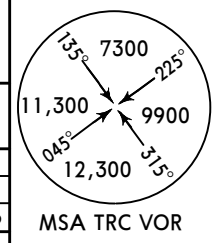
STRAIGHT-IN LANDING RWY 31			CIRCLE-TO-LAND		
MDA(H) 4120' (441')			MDA(H)		
A	1		Max Kts	4300' (609') - 1	
B	1		90		
C	1 1/4		120	4300' (609') - 1 3/4	
D	1 1/2		140		
			165	5260' (1569') - 3	

MMTC/TRC
TORREON INTL

JEPPESEN
18 MAR 22 **13-6** Eff 24 Mar

TORREON, MEXICO
VOR Rwy 31

BRIEFING STRIP™	*TORREON Approach			*TORREON Tower																									
	119.6			118.5																									
	VOR TRC 116.4	Final Apch Crs 309°	No FAF	MDA(H) 4400' (721')	Apt Elev 3691' Rwy 3679'																								
	MISSED APCH: Climb outbound on TRC VOR R-309, then turn RIGHT within 10 NM to TRC VOR at the minimum holding altitude.																												
<table border="1"> <tr> <td colspan="7">MISSED APCH: Max Distance Outbound Track 7 NM</td> </tr> <tr> <td>Gnd speed-Kts</td> <td>80</td> <td>100</td> <td>120</td> <td>140</td> <td>160</td> <td>180</td> <td>200</td> </tr> <tr> <td>Time</td> <td>5:15</td> <td>4:12</td> <td>3:30</td> <td>3:00</td> <td>2:38</td> <td>2:20</td> <td>2:06</td> </tr> </table>							MISSED APCH: Max Distance Outbound Track 7 NM							Gnd speed-Kts	80	100	120	140	160	180	200	Time	5:15	4:12	3:30	3:00	2:38	2:20	2:06
MISSED APCH: Max Distance Outbound Track 7 NM																													
Gnd speed-Kts	80	100	120	140	160	180	200																						
Time	5:15	4:12	3:30	3:00	2:38	2:20	2:06																						
Alt Set: IN (MB on req)			Trans level: FL 195		Trans alt: 18500'																								



Gnd speed-Kts	70	90	100	120	140	160	REIL PAPI-L	↑ on 116.4 R-309
Descent Angle 3.51°	435	559	621	745	870	994		
MAP at VOR								

STRAIGHT-IN LANDING RWY 31			CIRCLE-TO-LAND		
MDA(H) 4400' (721')			MDA(H)		
A		Max Kts	90		
B	1		4400' (709') - 1		
C	2		140		
D	2 1/4		165		
			4400' (709') - 2		
			5260' (1569') - 3		