

## General Information

Location: VERACRUZ MEX  
ICAO/IATA: MMVR / VER  
Lat/Long: N19° 08.7', W096° 11.2'  
Elevation: 89 ft

Airport Use: Public  
Daylight Savings: Not Observed  
UTC Conversion: +6:00 = UTC  
Magnetic Variation: 4.0° E

Fuel Types: 100 Octane (LL), Jet A  
Customs: Yes  
Airport Type: IFR  
Landing Fee: No  
Control Tower: Yes  
Jet Start Unit: No  
LLWS Alert: No  
Beacon: No

Sunrise: 1155 Z  
Sunset: 0048 Z

## Runway Information

Runway: 01  
Length x Width: 7874 ft x 148 ft  
Surface Type: asphalt  
TDZ-Elev: 89 ft  
Lighting: Edge, ALS

Runway: 19  
Length x Width: 7874 ft x 148 ft  
Surface Type: asphalt  
TDZ-Elev: 67 ft  
Lighting: Edge

## Communication Information

ATIS: 127.800  
Veracruz Tower: 118.500  
Veracruz Approach: 120.400  
Veracruz Information: 122.350 AFIS

*ATIS 127.8	*VERACRUZ Approach 120.4
----------------	-----------------------------

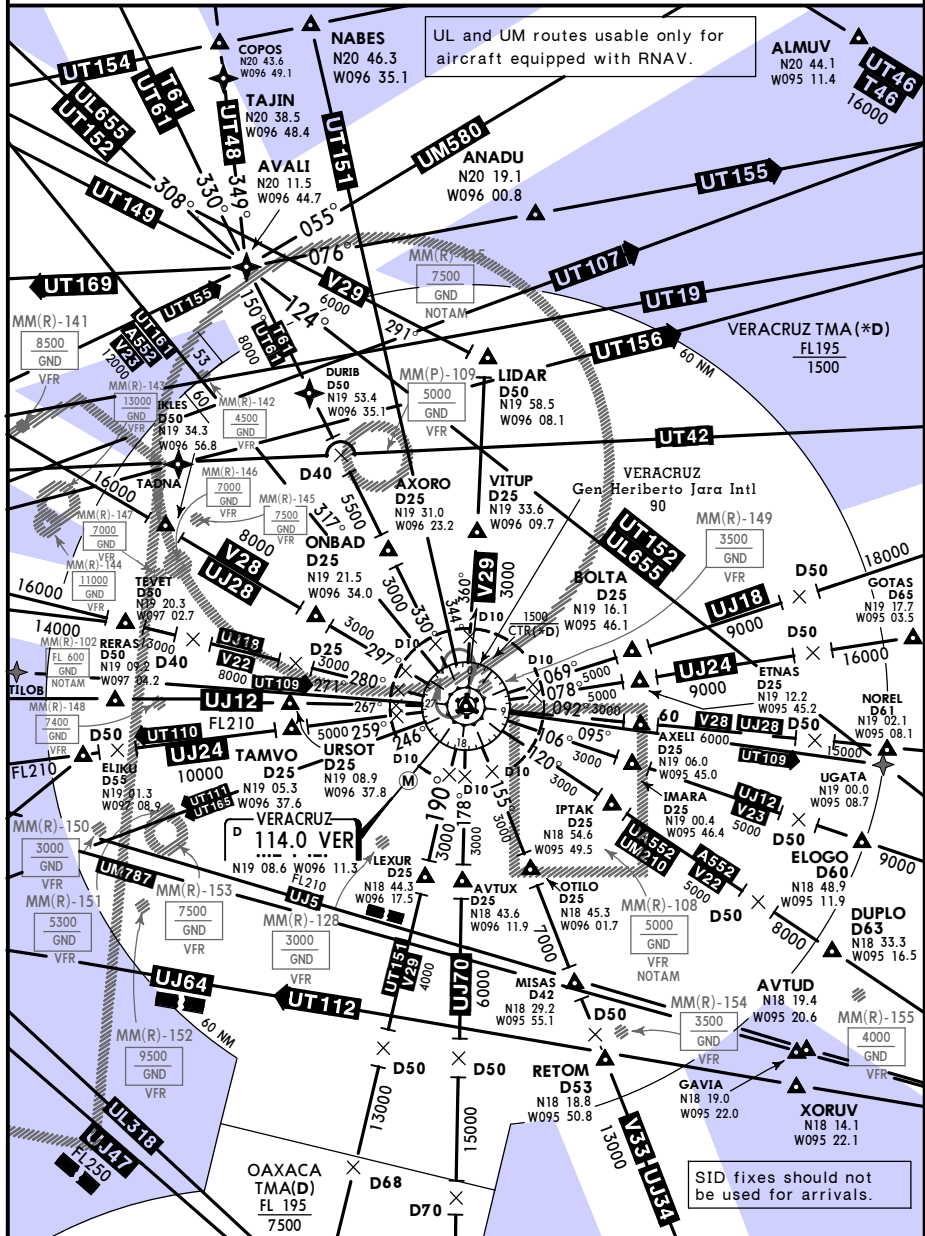
**SPEED RESTRICTIONS WITHIN MEXICO AIRSPACE**

**Maximum IAS unless otherwise depicted or authorized by ATC**

- Below 3000' AGL within 10NM of any airport.....200 KTS
- Below 10000' MSL within Mexico Airspace.....250 KTS
- Below 10000' AGL within 30NM of any airport.....250 KTS

**WITHIN VERACRUZ TMA**

- At or below 3100' MSL and within 10NM of VER VORDME..... 200 KTS
- At or below 10100' MSL within 30NM of VER VORDME..... 250 KTS



UL and UM routes usable only for aircraft equipped with RNAV.

VERACRUZ TMA (\*D)  
FL195  
1500

Gen Heriberto Jara Intl  
90

VERACRUZ  
D25  
N19 08.9  
W096 37.8

VERACRUZ  
D25  
N19 08.9  
W096 37.8

SID fixes should not be used for arrivals.

MMVR/VER

JEPPESEN

VERACRUZ, MEXICO

GEN HERIBERTO JARA INTL

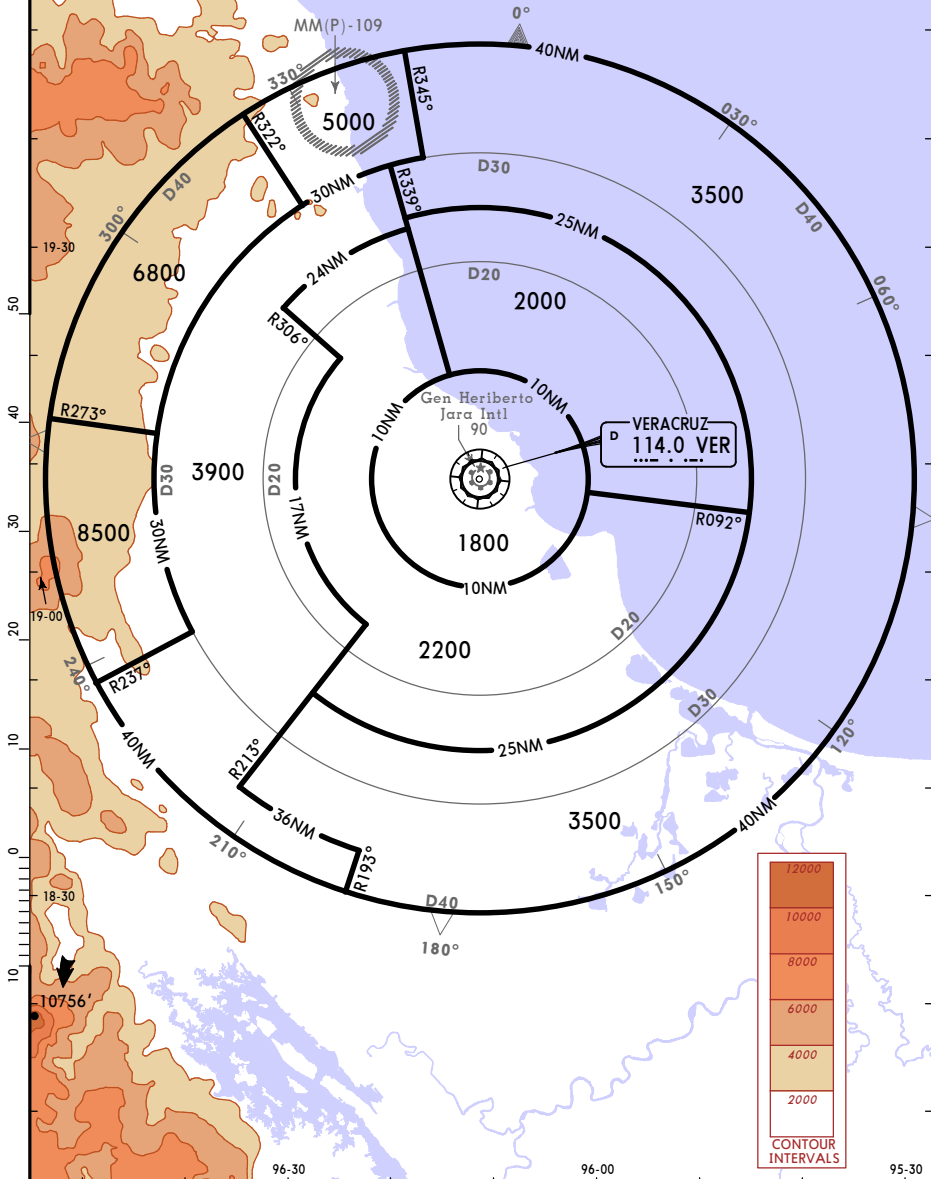
7 JUN 13 (10-1R)

**RADAR MINIMUM ALTITUDES**

*VERACRUZ Approach <b>120.4</b>	<i>Apt Elev</i> <b>90'</b>
Alt Set: MB (IN on req)	Trans level: FL 195
Trans alt: 18500'	
These MVA are the lowest altitudes that can be assigned by the controller within a sector when RADAR control procedures (vectors) are applied, without affecting routes and procedures with lower minimums.	

**SPEED RESTRICTION**

MAX IAS	Horizontal Limit	Vertical Limit
250	30 NM VER	GND-10,100'
200	10 NM VER	Apt Elev - 3,100'



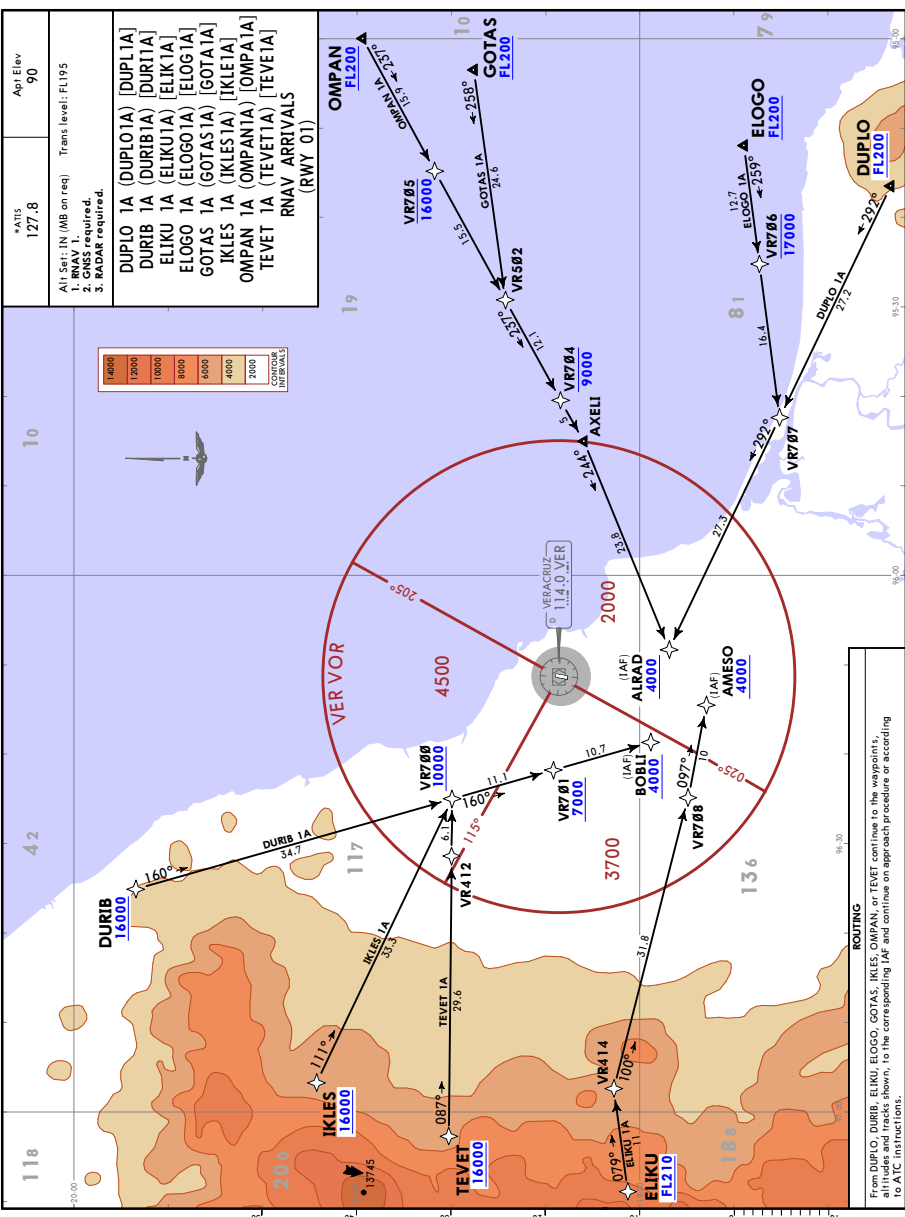
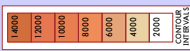
CHANGES: New procedure.

© JEPPESEN, 2013. ALL RIGHTS RESERVED.

**JEPPESEN** VERACRUZ MEXICO  
 19 APR 19 (10-2) **ENR 23 APR** **RNAV STAR**

\*AIS 127.8 Apt Elev 90  
 All Set: IN (MB on req) Trans level: FL195  
 1. RWYS required  
 2. RWYS required  
 3. RADAR required.

DUPLO 1A (DUPLO7A) (DUP1A)  
 DURIB 1A (DURIB1A) (DUR1A)  
 ELIKU 1A (ELIKU1A) (ELIK1A)  
 ELOGO 1A (ELOGO7A) (ELOG1A)  
 GOTAS 1A (GOTAS1A) (GOTA1A)  
 IKLES 1A (IKLES1A) (IKLE1A)  
 OMPAN 1A (OMPAN1A) (OMPA1A)  
 TEVET 1A (TEVET1A) (TEVE1A)  
 RNAV ARRIVALS  
 (RWY 01)



MMVB/VER  
 GEN HERIBERTO JARA INTL

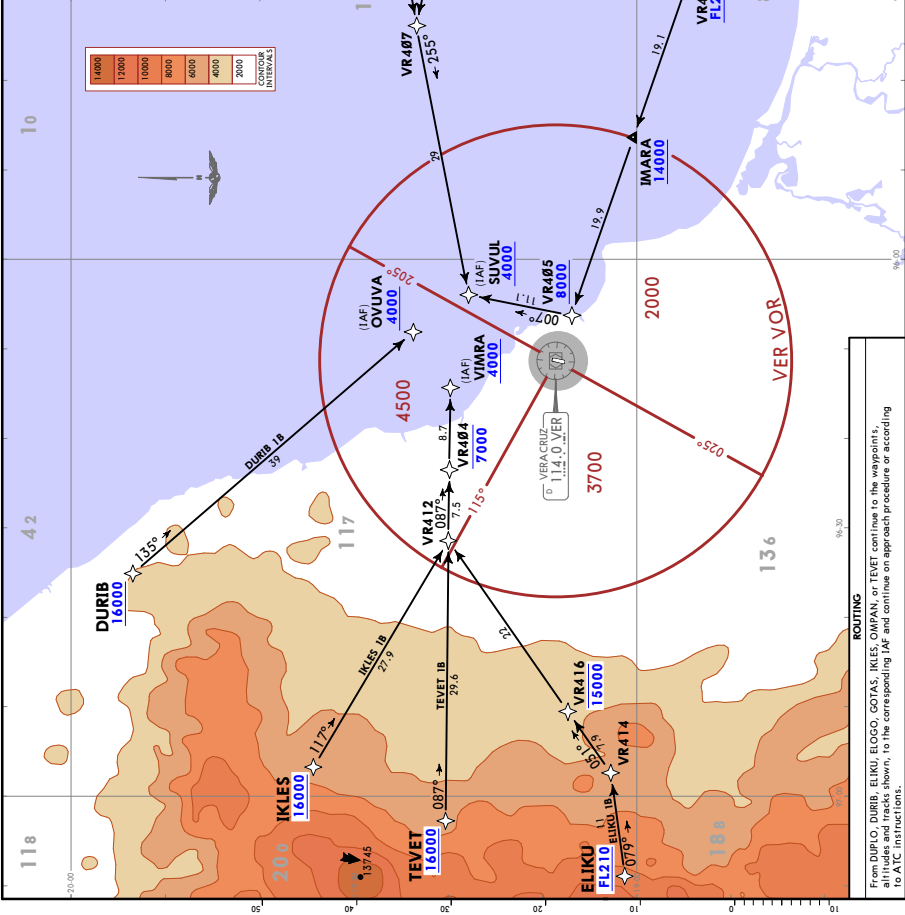
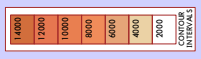
**ROUTING**  
 From DURIB, DURIB, ELIKU, ELOGO, GOTAS, OMPAN, or TEVET continue to the waypoint's altitude and track shown, to the corresponding IAF and continue enroute procedure or according to AIC instructions.  
 CHANGES: Runway designator, procedures: renumbered; removed.

**MMVR/VER**  
**GEN HERIBERTO JARA INTL**  
**VERACRUZ MEXICO**  
**RNAV STAR**

19 APR 19 (10-2A) EFT 23 Apr

APIS 127.8  
 Apt Elev 90  
 All Set: IN (MB on req)  
 1. RNAV 1 required.  
 2. RNAV 2 required.  
 3. RADA R required.

DUPLO 1B (DUPL01B) [DUPL1B]  
 DURIB 1B (DUR1B) [DUR1B]  
 ELIKU 1B (ELIKU1B) [ELIK1B]  
 ELOGO 1B (ELOGO1B) [ELOG1B]  
 GOTAS 1B (GOTAS1B) [GOTA1B]  
 IKLES 1B (IKLES1B) [IKLE1B]  
 OMPAN 1B (OMPA1B) [OMPA1B]  
 TEVET 1B (TEVET1B) [TEVE1B]  
 RNAV ARRIVALS  
 (RWY 19)



**ROUTING**  
 From DURIB, DURIB, ELIKU, ELOGO, GOTAS, IKLES, OMPAN, or TEVET continue to the waypoints' attributes and track shown, in the corresponding IAP and continue enmeshment procedure or according to ATC instructions.  
 CHANGES: Runway designator, procedures renumbered, renumbered.

**JEPPesen VERACRUZ, MEXICO**  
 10 JUN 22 (10-3) **EST 18.0 NM** **STD**

Ap't Elev 90  
 Trans alt: 18500

**AXELI 1A (AXEL11A) [AXEL1A]**  
**AXORO 2 (AXOR02) [AXOR02]**  
**BOLTA 1 (BOLTA 1) [BOLTA1]**  
**ETNAS 1 (ETNAS1) [ETNAS1]**  
**ONBAD 1 (ONBAD1) [ONBAD1]**  
**VERACRUZ 1A (VER1A) [VER1A]**  
**VITUP 1 (VITUP1) [VITUP1]**  
**DEPARTURES (RWY 01)**

MINIMUM CROSSING ALTITUDE		7500
MAD	UI-J16	2500
CPE	UI-28	2500
CAE	UI-28	2500
MVA	UI-28	2500
IZT	UI-33A, 552	2500
IOA	UI-34	2500
IOA	UI-70	2500
IOA	UI-71	2500
IOA	UI-72	14500
IOA	UI-12	14500
IOA	UI-18	10100
IOA	UI-41	2500
IOA	UI-43	2500
IOA	UI-49	2500

This SID requires a minimum climb gradient of:  
 ONBAD 1: 250 per NM (4.11%) to 14000.  
 Gnd speed/KT 75 100 150 200 250 300  
 250 per NM 313 417 625 832 1042 1250

SID	INITIAL CLIMB
AXELI 1A	CLIMB via VER 114.0 VER and proceed on the D10.0 Arc
AXORO 2	CLIMB via VER 114.0 VER and proceed on the D10.0 Arc
ONBAD 1	CLIMB via VER 114.0 VER and proceed on the D10.0 Arc
VERACRUZ 1A	CLIMB via VER 114.0 VER and proceed on the D10.0 Arc
VITUP 1	CLIMB via VER 114.0 VER and proceed on the D10.0 Arc

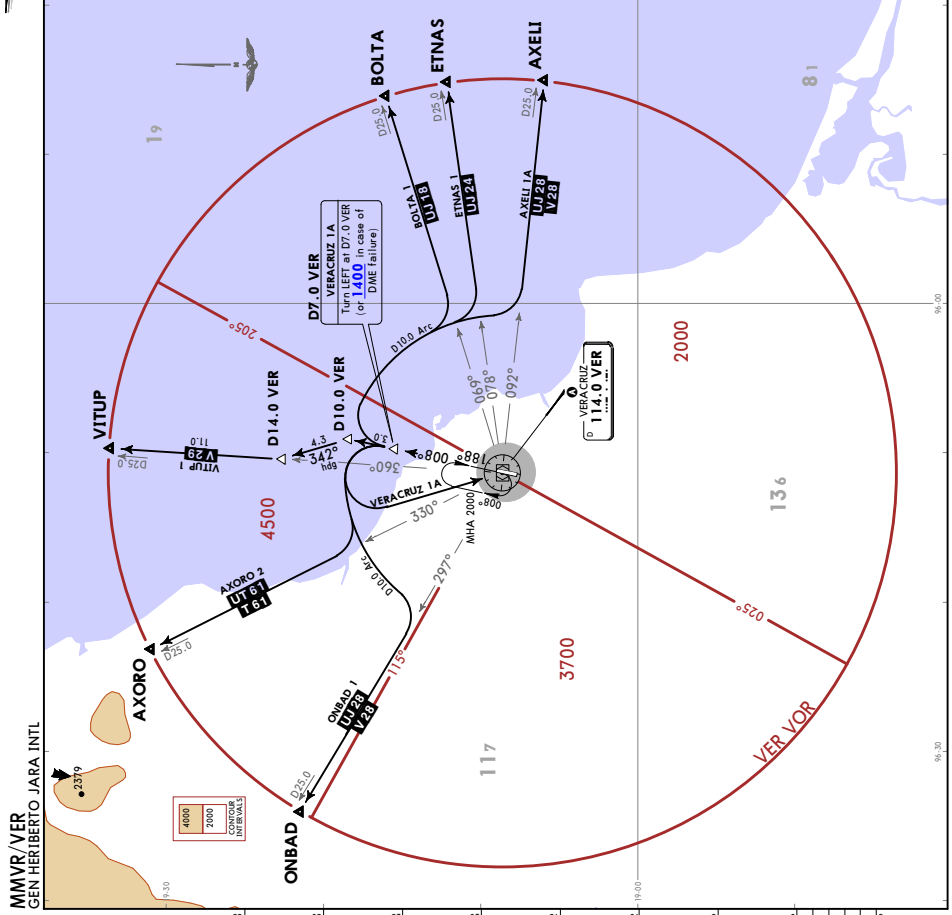
**AXELI 1A**  
 Climb via VER 114.0 VER and proceed on the D10.0 Arc to intercept the corresponding route or according to ATC instructions.

**AXORO 2**  
 Climb via VER 114.0 VER and proceed on the D10.0 Arc to intercept the corresponding route or according to ATC instructions.

**ONBAD 1**  
 Climb via VER 114.0 VER and proceed on the D10.0 Arc to intercept the corresponding route or according to ATC instructions.

**VERACRUZ 1A**  
 Climb via VER 114.0 VER and proceed on the D10.0 Arc to intercept the corresponding route or according to ATC instructions.

**VITUP 1**  
 Climb via VER 114.0 VER and proceed on the D10.0 Arc to intercept the corresponding route or according to ATC instructions.



**MMVR//VER**  
 GEN HERIBERTO JARA INTL

9-30

**MMVR/VER**  
GEN HERIBERTO JARA INTL

**JEPPESEN** **VERACRUZ, MEXICO**

10 JUN 22 (10-5A) REF 16 JUN 22 **STD**

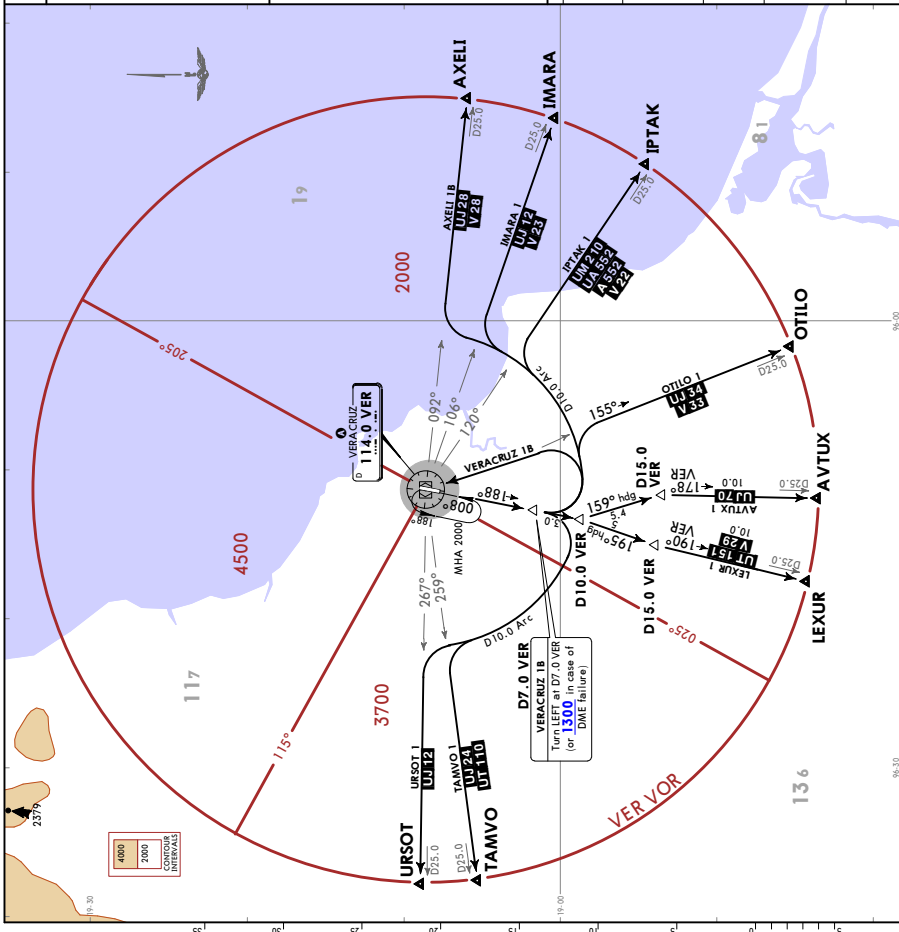
Trans alt: 18580  
Apt Elev 90

**AVTUX 1 (AVTUX1) [AVTUX1]**  
**AXELI 1B (AXELI1B) [AXELI1B]**  
**IMARA 1 (IMARA1) [IMARA1]**  
**IPTAK 1 (IPTAK1) [IPTAK1]**  
**LEXUR 1 (LEXUR1) [LEXUR1]**  
**OTILO 1 (OTILO1) [OTILO1]**  
**TAMVO 1 (TAMVO1) [TAMVO1]**  
**URSOT 1 (URSOT1) [URSOT1]**  
**VERACRUZ 1B (VER1B) [VER1B]**

**DEPARTURES (RWY 19)**

MINIMUM CROSSING ALTITUDE	
MID	2500
UI-1B	2500
UI-28	2500
UI-76	2500
UI-28	2500
UI-12	2500
UI-23	2500
UI-22	2500
UI-552	2500
UI-210	2500
UI-23	2500
UI-70	2500
UI-70	2500
UI-151	3500
UI-24	4250
UI-24	4250
UI-110	10100
UI-16	7000
UI-28	7000
UI-28	7000
UI-28	7000
UI-28	7000
UI-61	2500
UI-29	2500

These SID's require a minimum climb gradient of:  
URSOT 1 and URSOT 1B 300 per NM (5.92%) to FL210.  
Grid speed/KT 75 100 150 200 250 300  
340 per NM 450 600 900 1200 1500 1800



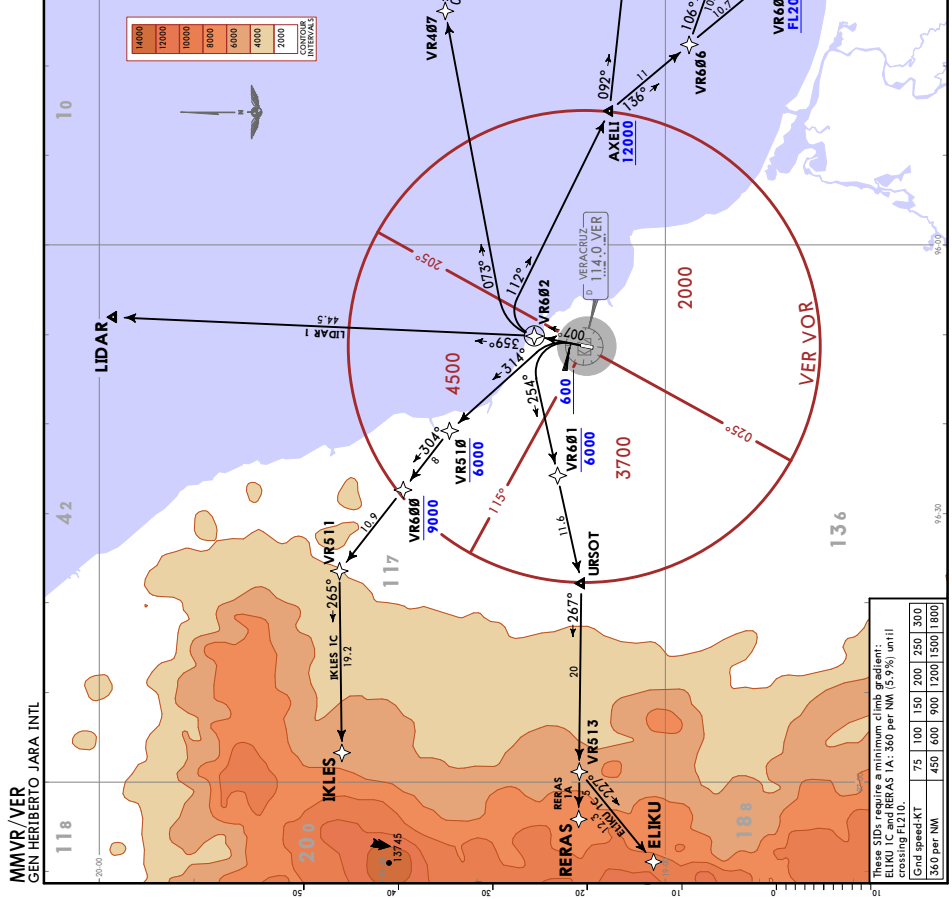
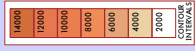
SID	INITIAL CLIMB
AVTUX 1	Climb via VER R188 to 07.0 VER, turn LEFT and proceed on heading 153° to intercept VER R178 to AVTUX, and continue on the assigned route or according to ATC instructions.
AXELI 1B	Climb via VER R188 to D7.0 VER, turn LEFT and proceed on the D10.0 Arc to intercept VER V08 for TAMVO, continue on the assigned route or according to ATC instructions.
IMARA 1	Climb via VER R188 to D7.0 VER, turn LEFT and proceed on the corresponding Arc to intercept VER V08 for TAMVO, continue on the assigned route or according to ATC instructions.
IPTAK 1	Climb via VER R188 to D10.0 VER, turn RIGHT and proceed on heading 195° to intercept VER R190 to LEXUR and according to ATC instructions.
OTILO 1	Climb via VER R188 to D7.0 VER, turn LEFT and proceed on the D10.0 Arc to intercept VER V08 for TAMVO, URSOT and continue on the assigned route or according to ATC instructions.
LEXUR 1	Climb via VER R188 to D7.0 VER, turn LEFT within 10 NM to VER VOR and according to ATC instructions.
TAMVO 1	Climb via VER R188 to D7.0 VER, turn LEFT within 10 NM to VER VOR and according to ATC instructions.
URSOT 1	Climb via VER R188 to D7.0 VER, turn LEFT within 10 NM to VER VOR and according to ATC instructions.
VERACRUZ 1B	Climb via VER R188 to D7.0 VER, turn LEFT within 10 NM to VER VOR and according to ATC instructions.

**JEFFERSON VERACRUZ, MEXICO**  
**RNAV SID**

1. Transponder: 15000  
 2. GNS required.  
 3. RADAR required.

Appr Elev 90

- DUPLO 1C (DUPLO1C) (DUPLIC)
  - ELIKU 1C (ELIKU1C) (ELIK1C)
  - ELOGO 1C (ELOGO1C) (ELOG1C)
  - GOTAS 1C (GOTAS1C) (GOTAT1C)
  - IKLES 1C (IKLES1C) (IKLET1C)
  - LIDAR 1 (LIDAR1) (LIDAR1)
  - NOREL 1A (NOREL1A) (NORE1A)
  - OMPAN 1C (OMPAN1C) (OMPAT1C)
  - RERAS 1A (RERAS1A) (RERATA)
- RNAV DEPARTURES  
 (RWY 01)



MMVP / VER  
 GEN HERIBERTO JARA INTL

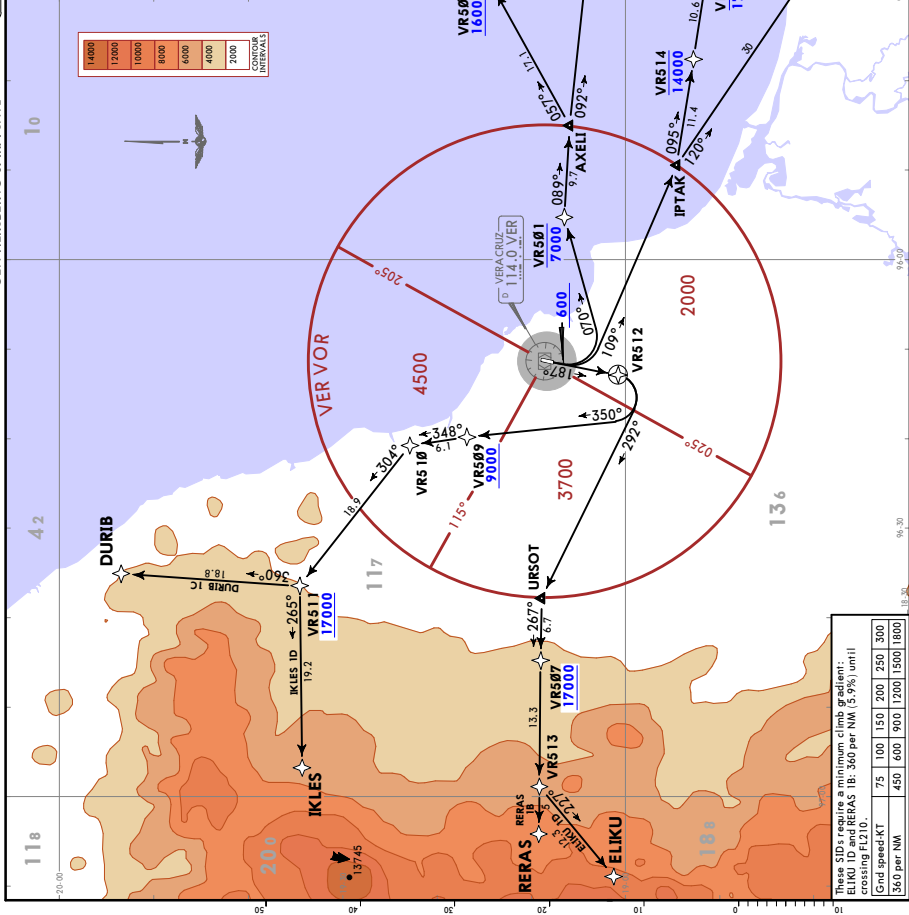
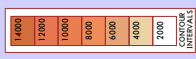
These SIDs require a minimum climb gradient:  
 ELIKU 1C and RERAS 1A: 360 per NM (5.9%) until  
 crossing FL210.  
 Climb speed-KT  
 360 per NM | 75 | 100 | 150 | 200 | 250 | 300  
 450 per NM | 450 | 600 | 900 | 1200 | 1500 | 1800



**MMVR/VER**  
**GEN HERIBERTO JARA INTL**  
**19 APR 19 (10-30) EET 23 Apr**  
**JEPPESEN**  
**VERACRUZ, MEXICO**  
**RNAV SID**

Time Alt: 15500  
 1. RNAV 1. CASR required.  
 3. RADAR required.  
 App Elev 90

- DUPLO 1D (DUPLO1D) (DUPL1D)
- DURIB 1C (DURIB1C) (DURI1C)
- ELIKU 1D (ELIKU1D) (ELIK1D)
- ELOGO 1D (ELOGO1D) (ELOG1D)
- GOTAS 1D (GOTAS1D) (GOTA1D)
- IKLES 1D (IKLES1D) (IKLE1D)
- NOREL 1B (NOREL1B) (NORE1B)
- OMPAN 1D (OMPAN1D) (OMPA1D)
- RERAS 1B (RERAS1B) (RERA1B)
- RNAV DEPARTURES (RWY 19)



These SIDs require a minimum climb gradient:  
 ELIKU 1D and RERAS 1B: 360 per NM (5.9%) until crossing FL210.  
 Gnd speed-KT 75 100 150 200 250 300  
 360 per NM 450 600 900 1200 1500 1800

CHANGES: Runway designator, procedures renumbered, reindexed.

# MMVR/VER

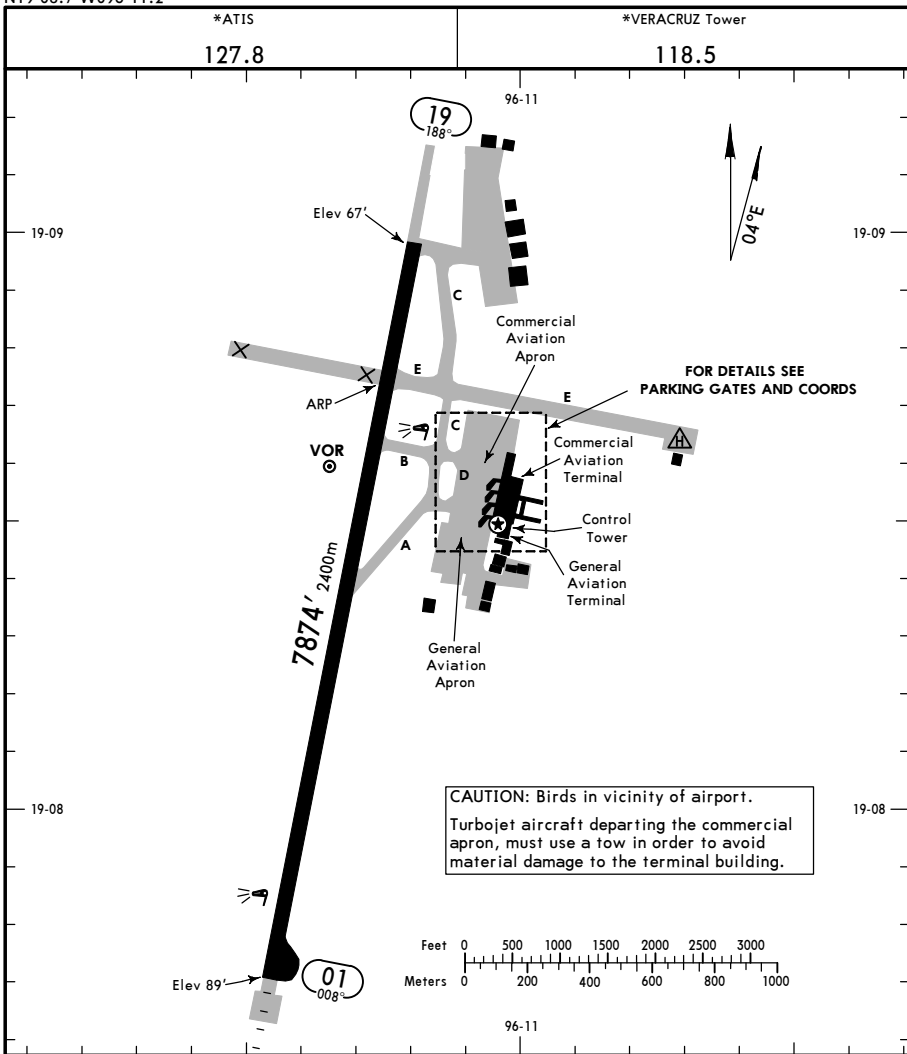
Apt Elev **89'**  
N19 08.7 W096 11.2



15 MAR 24 **(10-9)** Eff 21 Mar

# VERACRUZ, MEXICO

GEN HERIBERTO JARA INTL



### ADDITIONAL RUNWAY INFORMATION

RWY	HIRL SALSF PAPI-L (angle 3.0°)	USABLE LENGTHS			WIDTH
		Threshold	Landing Beyond	TAKE-OFF	
01	HIRL SALSF PAPI-L (angle 3.0°)				148'
19	HIRL PAPI-L (angle 3.0°)				45m

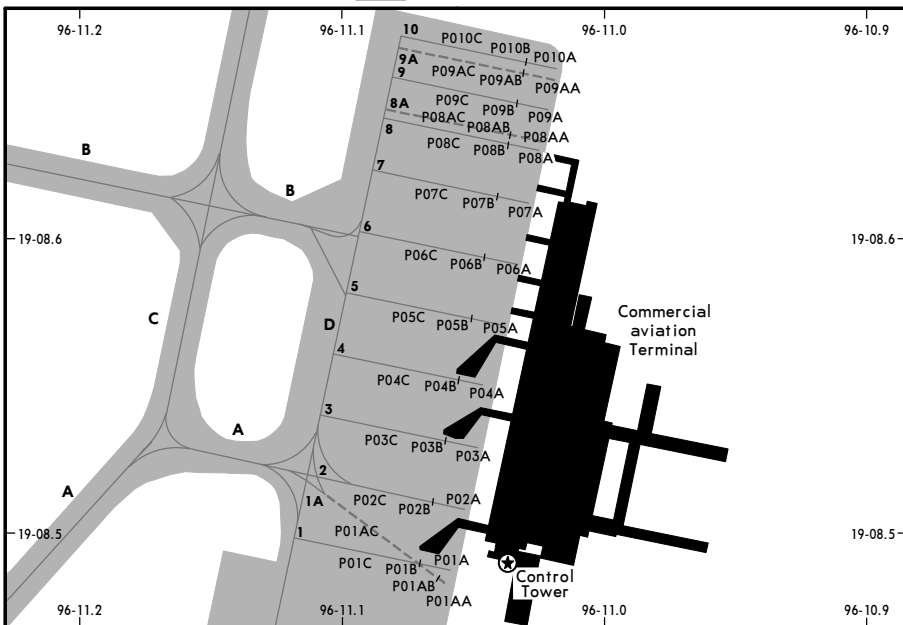
State	TAKE-OFF	FOR FILING AS ALTERNATE
	Rwy 01, 19	
1 & 2 Eng	V1	A
3 & 4 Eng	300'- V1600m	B
		C
		D
		1000'- V2 V3200m

MMVR/VER

JEPPESEN

VERACRUZ, MEXICO  
GEN HERIBERTO JARA INTL

15 MAR 24 (10-9A) Eff 21 Mar



**PARKING POSITION COORDINATES**

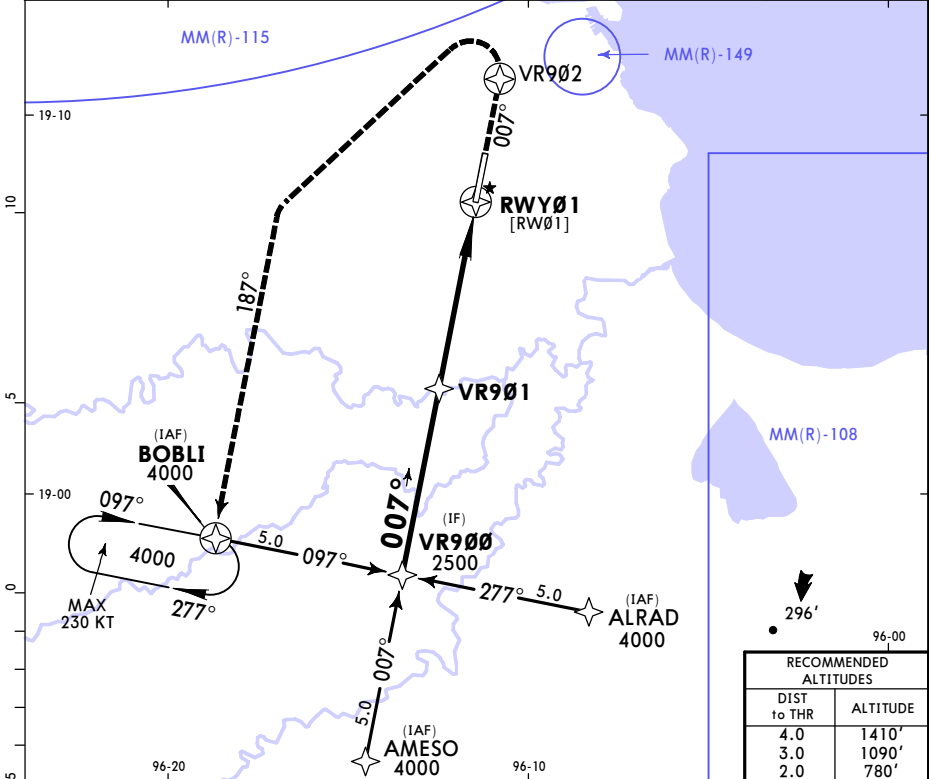
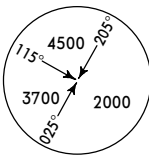
POSITION No.	COORDINATES	ELEVATION
<b>Commercial Aviation</b>		
P01A-C	N19 08.5 W096 11.1	71' (21.5m)
P02A-C, P03B-C	N19 08.5 W096 11.1	72' (22m)
P01AA-AC	N19 08.5 W096 11.1	71' (21.5m)
P03A	N19 08.5 W096 11.0	72' (22m)
P04A, P05A-B, P06A-B	N19 08.6 W096 11.0	72' (22m)
P04B-C, P05C, P06C	N19 08.6 W096 11.1	72' (22m)
P07A-B, P08A-B, P08AA-AB	N19 08.6 W096 11.0	72' (22m)
P07C, P08C, P08AC, P09C	N19 08.6 W096 11.1	72' (22m)
P09A-B	N19 08.6 W096 11.0	72' (22m)
P09AA-AB, P10A-B	N19 08.7 W096 11.0	72' (22m)
P09AC, P10C	N19 08.7 W096 11.1	72' (22m)

**MMVR/VER**  
**GEN HERIBERTO JARA INTL**

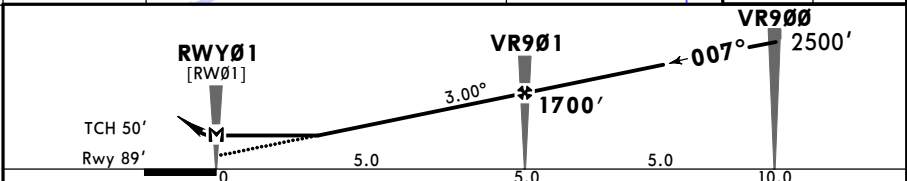


**VERACRUZ, MEXICO**  
**RNP Rwy 01**

*ATIS <b>127.8</b>		*VERACRUZ Approach <b>120.4</b>		*VERACRUZ Tower <b>118.5</b>	
RNAV	Final Apch Crs <b>007°</b>	<b>VR901</b> 1700' (1611')	LNAV MDA(H) <b>560' (471')</b>	Apt Elev 89'	Rwy 89'
<b>MISSED APCH: Climb on runway track to VR902 and proceed on the missed approach to holding pattern on BOBLI at 4000'.</b>					
Alt Set: IN (MB on req)		Trans level: FL 195		Trans alt: 18500'	
RNP Apch		GNSS required.		MSA VER VOR	



RECOMMENDED ALTITUDES	
DIST to THR	ALTITUDE
4.0	1410'
3.0	1090'
2.0	780'



Gnd speed-Kts	70	90	100	120	140	160	SALSF PAPI	↑ on Track to RWY VR902	
Descent Angle	3.00°	372	478	531	637	743			849
MAP at RWY01									
FAF to MAP	5.0	4:17	3:20	3:00	2:30	2:09	1:53		

A	STRAIGHT-IN LANDING		Max Kts	CIRCLE-TO-LAND	
	LNAV	ALS out		MDA(H)	
B	V1	V1600m	90	640'(551')	V1 V1600m
C	V1 1/4	V2000m	140	640'(551')	V1 1/2 V2400m
D	V1 1/2	V2400m	165	700'(611')	V2 V3200m

CHANGES: Apt elevation, new AOM concept.

# MMVR/VER

GEN HERIBERTO JARA INTL

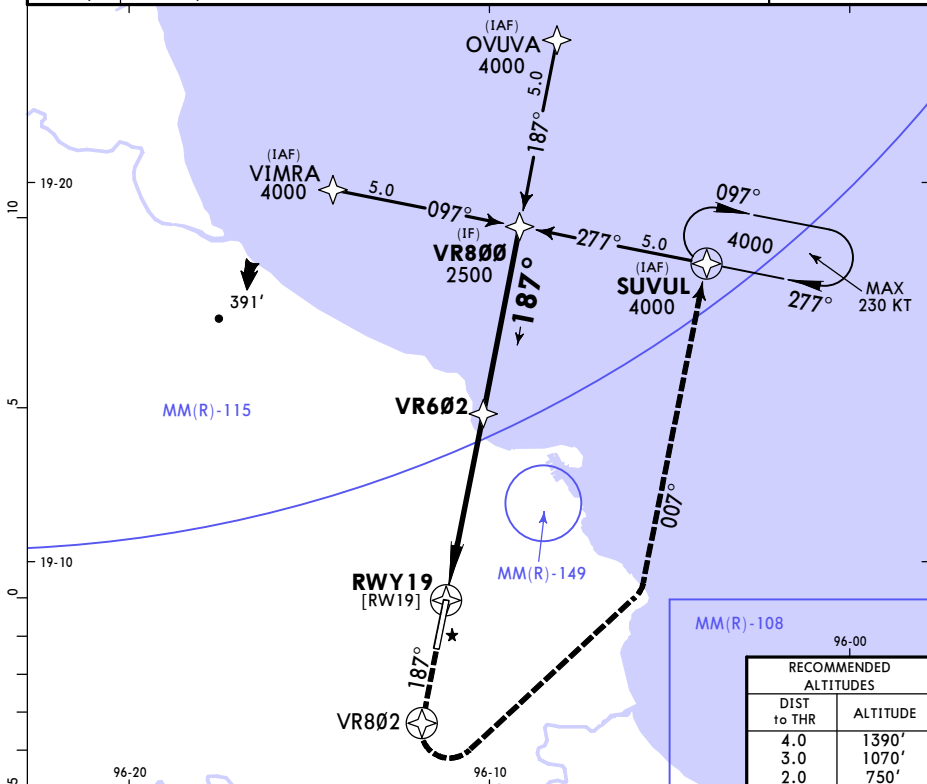
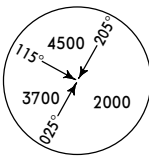


15 MAR 24 (12-2) Eff 21 Mar

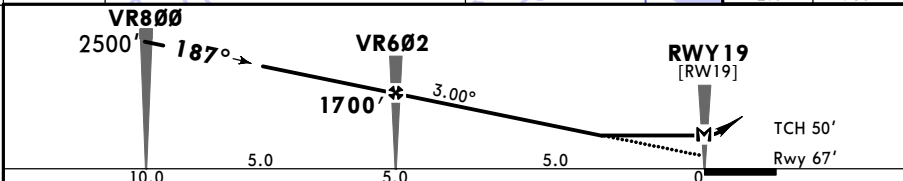
# VERACRUZ, MEXICO

RNP Rwy 19

*ATIS 127.8		*VERACRUZ Approach 120.4		*VERACRUZ Tower 118.5	
RNAV	Final Apch Crs <b>187°</b>	<b>VR602</b> 1700' (1633')	LNAV MDA(H) <b>580' (513')</b>	Apt Elev 89'	Rwy 67'
<b>MISSED APCH:</b> Climb on runway track to VR802 and proceed on the missed approach to holding pattern on SUVUL at 4000'.					
Alt Set: IN (MB on req)		Trans level: FL 195		Trans alt: 18500'	
RNP Apch	GNSS required.				MSA VER VOR



RECOMMENDED ALTITUDES	
DIST to THR	ALTITUDE
4.0	1390'
3.0	1070'
2.0	750'



Gnd speed-Kts	70	90	100	120	140	160	PAPI-L	↑ on Track ↓ <b>RWY 19</b> to <b>VR802</b>	
Descent Angle	3.00°	372	478	531	637	743			849
MAP at RWY19									
FAF to MAP	5.0	4:17	3:20	3:00	2:30	2:09	1:53		

State				STRAIGHT-IN LANDING				CIRCLE-TO-LAND				
LNAV								MDA(H) 580' (513')				
A	V1		V1600m		Max Kts		MDA(H)		90		640'(551') V1 V1600m	
B	V1		V1600m		120		140		640'(551') V1 1/2 V2400m			
C	V1		V2400m		140		165		700'(611') V2 V3200m			
D	V1		V2800m		165							

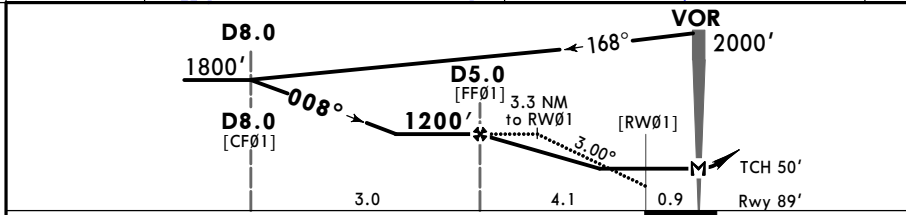
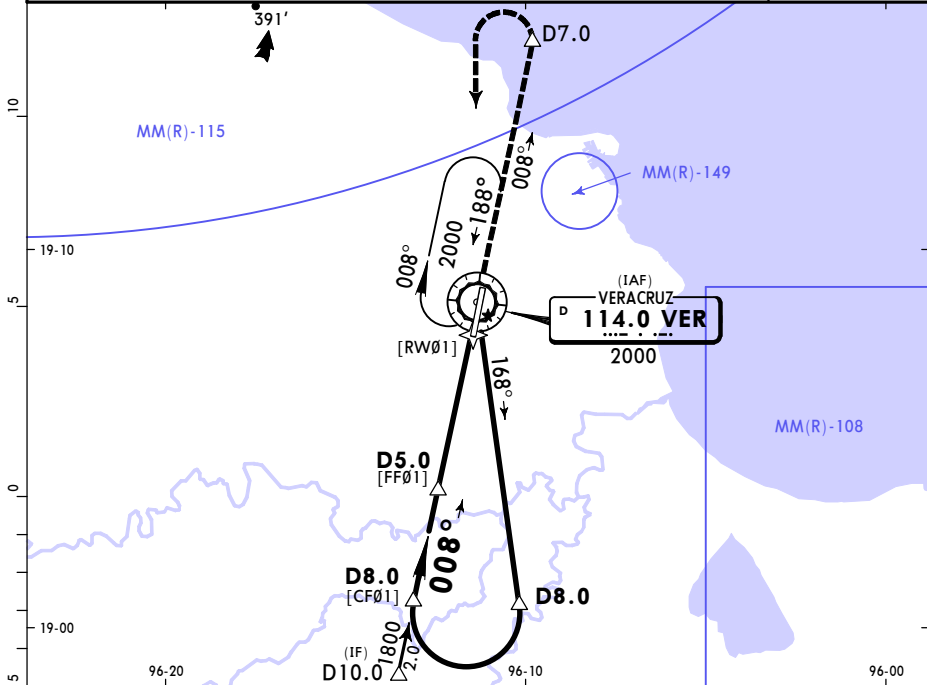
CHANGES: Apt and rwy elevation, new AOM concept.

**MMVR/VER**  
**GEN HERIBERTO JARA INTL**

**JEPPESSEN**  
 15 MAR 24 **(13-1)** Eff 21 Mar

**VERACRUZ, MEXICO**  
**VOR Z Rwy 01**

*ATIS 127.8		*VERACRUZ Approach 120.4		*VERACRUZ Tower 118.5	
VOR VER <b>114.0</b>	Final Apch Crs <b>008°</b>	D5.0 <b>1200'</b> (1111')	MDA(H) <b>560'</b> (471')	Apt Elev 89' Rwy 89'	
<b>MISSED APCH:</b> Climb via VER VOR R-008 to D7.0, then turn LEFT within 10 NM to VER VOR at the minimum holding altitude.					
Alt Set: IN (MB on req)		Trans level: FL 195		Trans alt: 18500'	
DME required.					MSA VER VOR



Gnd speed-Kts	70	90	100	120	140	160	SALS	VER 114.0	D7.0
Descent Angle 3.00°	372	478	531	637	743	849			
MAP at VOR							PAPI	on	R-008

<b>State</b>				STRAIGHT-IN LANDING		CIRCLE-TO-LAND				
				MDA(H) <b>560'</b> (471')						
				ALS out		Max Kts	MDA(H)			
A	V1		V1600m		90	640' (551')		V1	V1600m	
B	V1 1/4		V2000m		120	640' (551')		V1 1/2	V2400m	
C	V1 1/2		V2400m		140	700' (611')		V2	V3200m	
D					165					

# MMVR/VER

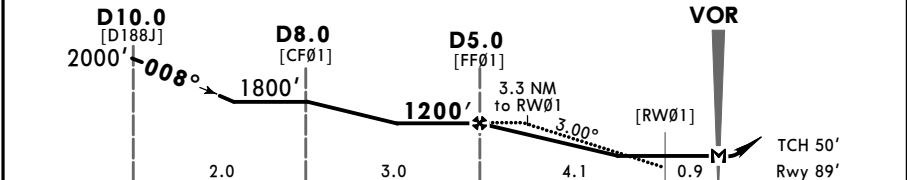
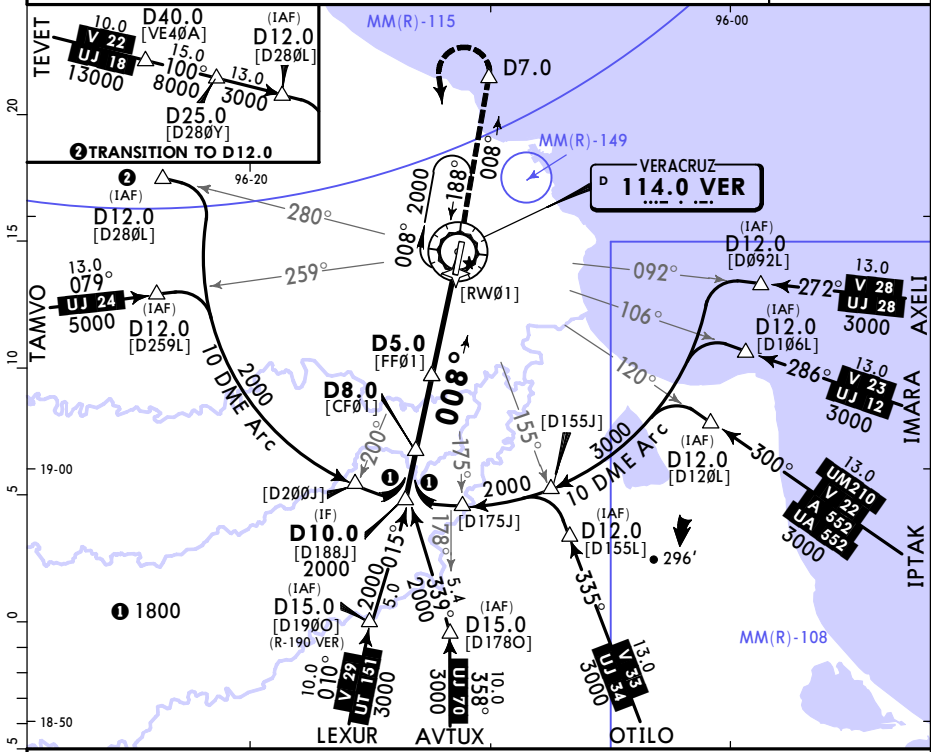
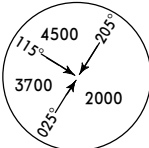
## GEN HERIBERTO JARA INTL

15 MAR 24 **13-2** Eff 21 Mar

# VERACRUZ, MEXICO

## VOR Y Rwy 01

*ATIS 127.8		*VERACRUZ Approach 120.4		*VERACRUZ Tower 118.5	
VOR VER <b>114.0</b>	Final Apch Crs <b>008°</b>	D5.0 <b>1200'</b> (1111')	MDA(H) <b>560'</b> (471')	Apt Elev 89'	Rwy 89'
<b>MISSED APCH:</b> Climb via VER VOR R-008 to D7.0, then turn LEFT within 10 NM to VER VOR at the minimum holding altitude.					
Alt Set: IN (MB on req)		Trans level: FL 195		Trans alt: 18500'	
DME required.					
					MSA VER VOR



Gnd speed-Kts	70	90	100	120	140	160
Descent Angle 3.00°	372	478	531	637	743	849
MAP at VOR						

SALSF	VER
PAPI	114.0 D7.0
	R-008

<b>State</b>		STRAIGHT-IN LANDING	
		MDA(H) <b>560'</b> (471')	
		ALS out	
A			Max Kts 90
B	V1	V1600m	MDA(H)
C	V1 1/4	V2000m	640' (551')
D	V1 1/2	V2400m	V1 V1600m

		CIRCLE-TO-LAND	
		MDA(H)	
			Max Kts 90
			120
			140
			165

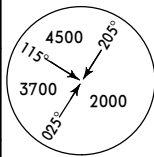
CHANGES: Procedure title, apt elev, new AOM concept, note added.

# MMVR/VER GEN HERIBERTO JARA INTL

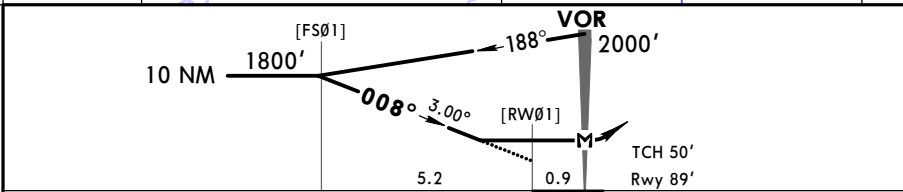
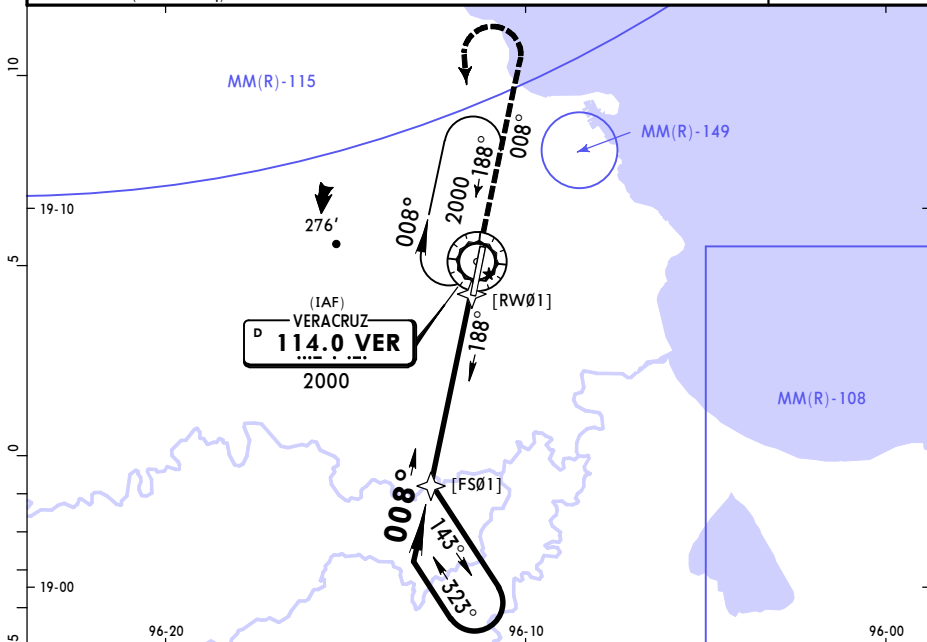
**JEPPESSEN**  
15 MAR 24 (13-3) Eff 21 Mar

# VERACRUZ, MEXICO VOR X Rwy 01

*ATIS <b>127.8</b>		*VERACRUZ Approach <b>120.4</b>			*VERACRUZ Tower <b>118.5</b>																								
VOR VER <b>114.0</b>	Final Apch Crs <b>008°</b>	No FAF	MDA(H) <b>620' (531')</b>	Apt Elev 89' Rwy 89'																									
<b>MISSED APCH:</b> Climb via VER VOR R-008, turn LEFT within 10 NM to VER VOR at the minimum holding altitude.																													
<table border="1"> <tr> <td colspan="7">MISSED APCH: Max Distance Outbound Track 7 NM</td> </tr> <tr> <td>Gnd speed-Kts</td> <td>80</td> <td>100</td> <td>120</td> <td>140</td> <td>160</td> <td>180</td> <td>200</td> </tr> <tr> <td>Time</td> <td>5:15</td> <td>4:12</td> <td>3:30</td> <td>3:00</td> <td>2:38</td> <td>2:20</td> <td>2:06</td> </tr> </table>							MISSED APCH: Max Distance Outbound Track 7 NM							Gnd speed-Kts	80	100	120	140	160	180	200	Time	5:15	4:12	3:30	3:00	2:38	2:20	2:06
MISSED APCH: Max Distance Outbound Track 7 NM																													
Gnd speed-Kts	80	100	120	140	160	180	200																						
Time	5:15	4:12	3:30	3:00	2:38	2:20	2:06																						
Alt Set: IN (MB on req)		Trans level: FL 195			Trans alt: 18500'																								



MSA VER VOR



Gnd speed-Kts	70	90	100	120	140	160	SALS F PAPI	VER 114.0 R-008
Descent Angle 3.00°	372	478	531	637	743	849		
MAP at VOR								

State				STRAIGHT-IN LANDING		CIRCLE-TO-LAND				
				MDA(H) <b>620' (531')</b>						
				ALS out		Max Kts	MDA(H)			
A					90					
B	V1	V1600m			120	640' (551')	V1	V1600m		
C	V1 1/2	V2400m			140	640' (551')	V1 1/2	V2400m		
D	V1 3/4	V2800m			165	700' (611')	V2	V3200m		

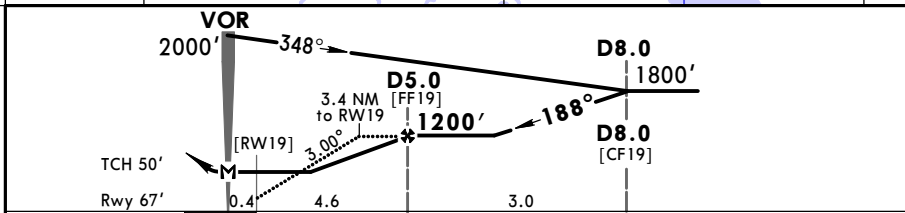
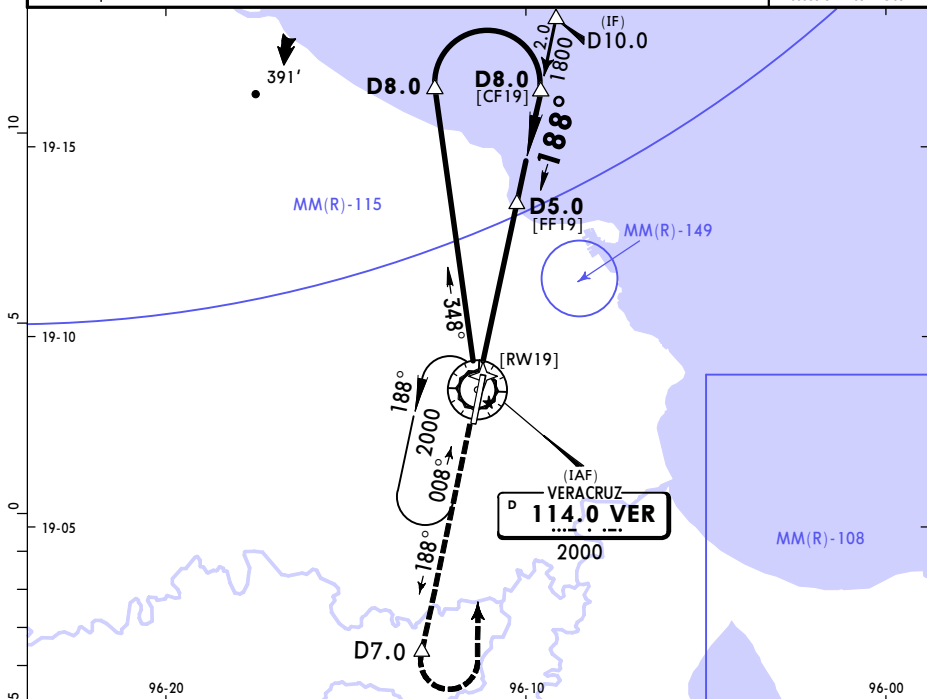
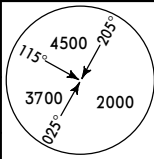


**MMVR/VER**  
**GEN HERIBERTO JARA INTL**

**JEPPESSEN**  
 15 MAR 24 **(13-4)** Eff 21 Mar

**VERACRUZ, MEXICO**  
**VOR Z Rwy 19**

*ATIS <b>127.8</b>		*VERACRUZ Approach <b>120.4</b>		*VERACRUZ Tower <b>118.5</b>	
VOR VER <b>114.0</b>	Final Apch Crs <b>188°</b>	<b>D5.0</b> 1200' (1133')	MDA(H) <b>580'</b> (513')	Apt Elev 89'	Rwy 67'
<b>MISSED APCH:</b> Climb via VER VOR R-188 to D7.0, then turn LEFT within 10 NM to VER VOR at the minimum holding altitude.					
Alt Set: IN (MB on req)		Trans level: FL 195		Trans alt: 18500'	
DME required.					



Gnd speed-Kts	70	90	100	120	140	160	PAPI-L	↑ on VER <b>114.0</b> <b>R-188</b>	<b>D7.0</b>
Descent Angle	3.00°	372	478	531	637	743			
MAP at VOR									

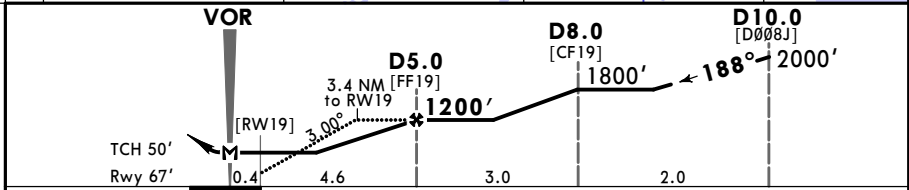
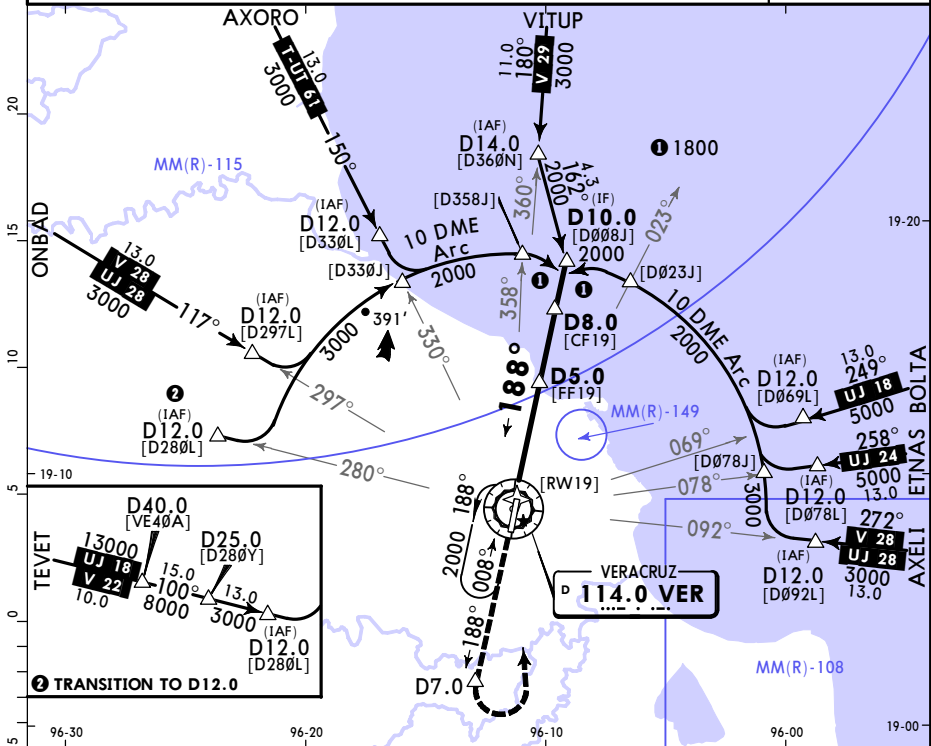
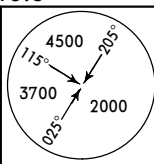
<b>State</b>					STRAIGHT-IN LANDING					CIRCLE-TO-LAND				
MDA(H) <b>580'</b> (513')														
A	V1		V1600m		Max Kts	MDA(H)								
B	V1		V1600m		90	640' (551')	V1	V1600m						
C	V1 1/2		V2400m		140	640' (551')	V1 1/2	V2400m						
D	V1 3/4		V2800m		165	700' (611')	V2	V3200m						

# MMVR/VER GEN HERIBERTO JARA INTL

15 MAR 24 **13-5** Eff 21 Mar

# VERACRUZ, MEXICO VOR Y Rwy 19

*ATIS 127.8		*VERACRUZ Approach 120.4		*VERACRUZ Tower 118.5
VOR VER <b>114.0</b>	Final Apch Crs <b>188°</b>	D5.0 <b>1200'</b> (1133')	MDA(H) <b>580'</b> (513')	Apt Elev 89' Rwy 67'
<b>MISSED APCH:</b> Climb via VER VOR R-188 to D7.0, then turn LEFT within 10 NM to VER VOR at the minimum holding altitude.				
Alt Set: IN (MB on req)		Trans level: FL 195		Trans alt: 18500'
DME required.				MSA VER VOR



Gnd speed-Kts	70	90	100	120	140	160	PAPI-L	↑ on 114.0 R-188	VER D7.0
Descent Angle 3.00°	372	478	531	637	743	849			
MAP at VOR									

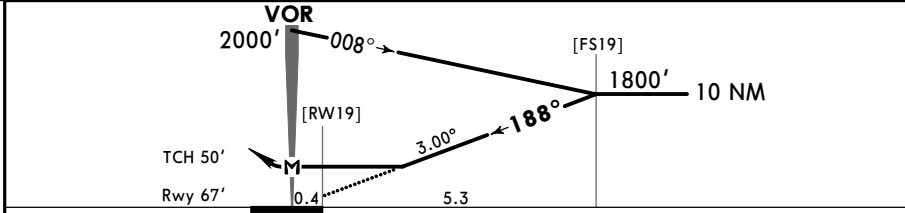
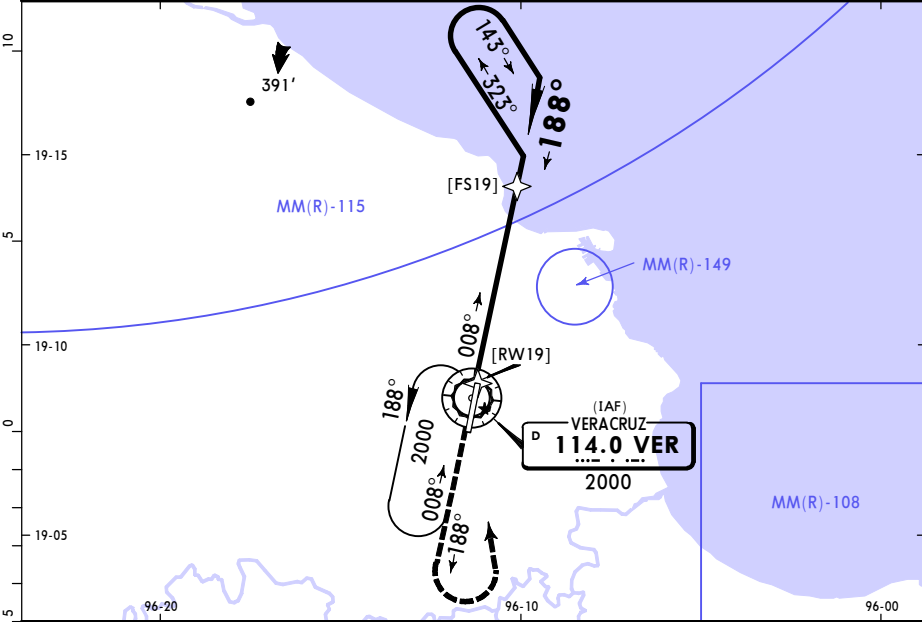
State	STRAIGHT-IN LANDING		CIRCLE-TO-LAND	
	MDA(H)	580' (513')	MDA(H)	
A			Max Kts	
B	V1	V1600m	90	640' (551') V1 V1600m
C	V1 1/2	V2400m	140	640' (551') V1 1/2 V2400m
D	V1 3/4	V2800m	165	700' (611') V2 V3200m

**MMVR/VER**  
**GEN HERIBERTO JARA INTL**

**JEPPESEN**  
 15 MAR 24 (13-6) Eff 21 Mar

**VERACRUZ, MEXICO**  
**VOR X Rwy 19**

*ATIS <b>127.8</b>		*VERACRUZ Approach <b>120.4</b>			*VERACRUZ Tower <b>118.5</b>																									
VOR VER <b>114.0</b>	Final Apch Crs <b>188°</b>	No FAF	MDA(H) <b>660' (593')</b>	Apt Elev 89' Rwy 67'																										
<b>MISSED APCH:</b> Climb via VER VOR R-188, then turn LEFT within 10NM to VER VOR at the minimum holding altitude.																														
<table border="1"> <tr> <td colspan="8">MISSED APCH: Max Distance Outbound Track 7 NM</td> </tr> <tr> <td>Gnd speed-Kts</td> <td>80</td> <td>100</td> <td>120</td> <td>140</td> <td>160</td> <td>180</td> <td>200</td> </tr> <tr> <td>Time</td> <td>5:15</td> <td>4:12</td> <td>3:30</td> <td>3:00</td> <td>2:38</td> <td>2:20</td> <td>2:06</td> </tr> </table>								MISSED APCH: Max Distance Outbound Track 7 NM								Gnd speed-Kts	80	100	120	140	160	180	200	Time	5:15	4:12	3:30	3:00	2:38	2:20
MISSED APCH: Max Distance Outbound Track 7 NM																														
Gnd speed-Kts	80	100	120	140	160	180	200																							
Time	5:15	4:12	3:30	3:00	2:38	2:20	2:06																							
Alt Set: IN (MB on req)		Trans level: FL 195			Trans alt: 18500'			MSA VER VOR																						



Gnd speed-Kts	70	90	100	120	140	160	PAPI-L	↑ on <b>VER</b> <b>R-188</b>
Descent Angle 3.00°	372	478	531	637	743	849		
MAP at VOR								

<b>State</b>				STRAIGHT-IN LANDING				CIRCLE-TO-LAND			
				MDA(H) <b>660' (593')</b>							
A					Max Kts	MDA(H)					
B	V1	V1600m		90	660'(571')	V1	V1600m				
C	V1 1/2	V2400m		140	660'(571')	V1 1/2	V2400m				
D	V1 3/4	V2800m		165	700'(611')	V2	V3200m				