

General Information

Location: TAPACHULA MEX
ICAO/IATA: MMTP / TAP
Lat/Long: N14° 47.7', W092° 22.2'
Elevation: 95 ft

Airport Use: Public
Daylight Savings: Not Observed
UTC Conversion: +6:00 = UTC
Magnetic Variation: 2.0° E

Fuel Types: 100 Octane (LL), Jet A
Customs: Yes
Airport Type: IFR
Landing Fee: No
Control Tower: Yes
Jet Start Unit: No
LLWS Alert: No
Beacon: Yes

Sunrise: 1157 Z
Sunset: 0026 Z

Runway Information

Runway: 05
Length x Width: 6562 ft x 148 ft
Surface Type: asphalt
TDZ-Elev: 72 ft
Lighting: Edge

Runway: 23
Length x Width: 6562 ft x 148 ft
Surface Type: asphalt
TDZ-Elev: 95 ft
Lighting: Edge

Communication Information

Tapachula Tower: 118.300
Merida Control ACC: 128.300 RCO

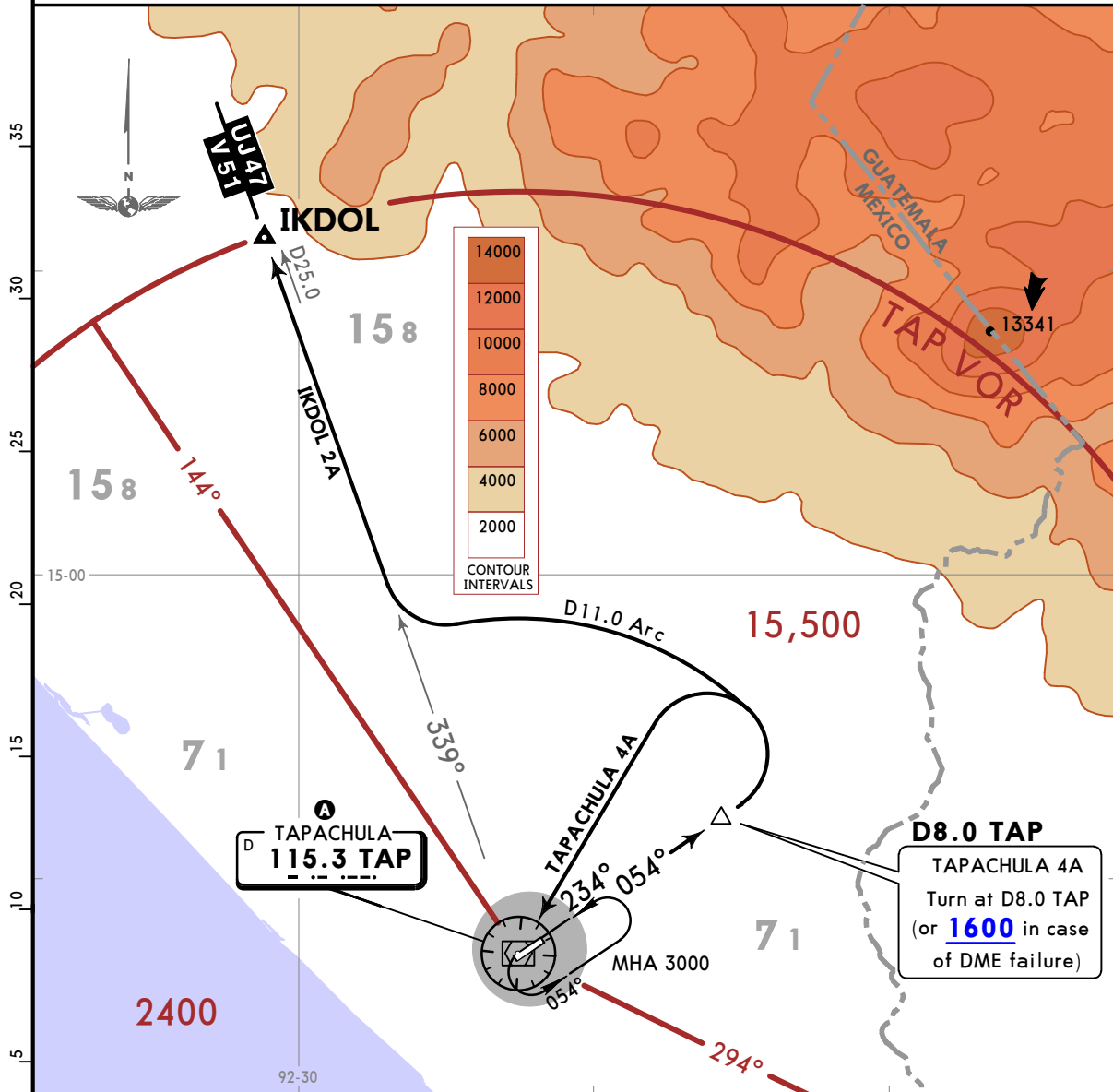
MMTP/TAP
TAPACHULA INTL

JEPPESEN
15 APR 22 **10-3** Eff 21 Apr

TAPACHULA, MEXICO
SID

Apt Elev 97	Trans alt: 18500
----------------	------------------

IKDOL 2A (IKDOL2A) [IKD02A]
TAPACHULA 4A (TAP4A) [TAP4A]
DEPARTURES
(RWY 05)



This SID requires a minimum climb gradient:
IKDOL 2A: 240 per NM (3.94%) to 12000.

Gnd speed-KT	75	100	150	200	250	300
240 per NM	300	400	600	800	1000	1200

A MINIMUM CROSSING ALTITUDE			
AUR	R-644	UR-644	8000
PIXEN		UL-423	7000
SJO	A-317	UA-317	7000
HUX		J-1	2000
IZT	V-1	J-13, UL-423	2000
TGZ	V-51	UJ-47	4400

SID	INITIAL CLIMB
IKDOL 2A	Climb via TAP R054 to D8.0 TAP, turn LEFT and proceed on D11.0 Arc to intercept TAP R339 to IKDOL and continue on the assigned route or ATC instructions.
TAPACHULA 4A	Climb via TAP R054 to D8.0 TAP (or 1600 in case of DME failure), turn LEFT within 11 NM of TAP VOR and cross TAP VOR according to the MCA A of the assigned route or ATC instructions.

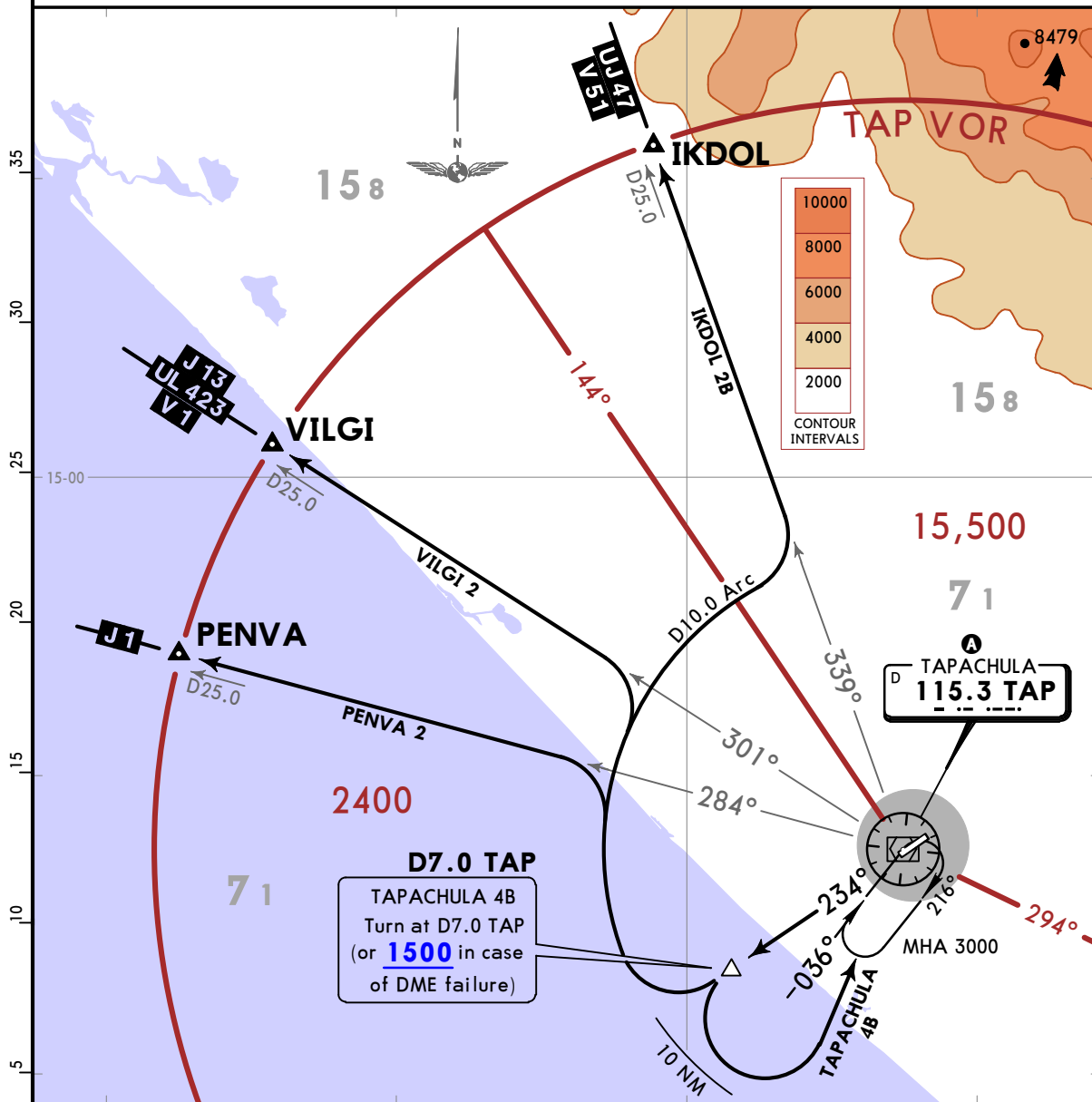
MMTP/TAP
TAPACHULA INTL

JEPPESEN
15 APR 22 **(10-3A)** Eff 21 Apr

TAPACHULA, MEXICO
SID

Apt Elev 97	Trans alt: 18500
----------------	------------------

**IKDOL 2B (IKDOL2B) [IKDO2B], PENVA 2 (PENVA2) [PENVA2]
TAPACHULA 4B (TAP4B) [TAP4B], VILGI 2 (VILGI2) [VILGI2]
DEPARTURES
(RWY 23)**



This SID requires a minimum climb gradient:
IKDOL 2B: 220 per NM (3.62%) to 12000.

Gnd speed-KT	75	100	150	200	250	300
220 per NM	275	367	550	733	917	1100

A MINIMUM CROSSING ALTITUDE			
AUR	R-644	UR-644	8000
PIXEN		UL-423	7000
SJO	A-317	UA-317	7000
HUX		J-1	2000
IZT	V-1	J-13, UL-423	2000
TGZ	V-51	UJ-47	4400

SID	INITIAL CLIMB
IKDOL 2B PENVA 2 VILGI 2	Climb via TAP R234 to D7.0 TAP, turn RIGHT and proceed on D10.0 Arc to intercept the corresponding radial from TAP VOR to IKDOL, PENVA, or VILGI and continue on the assigned route or ATC instructions.
TAPACHULA 4B	Climb via TAP R234 to D7.0 TAP (or 1500 in case of DME failure), turn LEFT within 10 NM of TAP VOR and cross TAP VOR according to the MCA A of the assigned route or ATC instructions.

MMTP/TAP

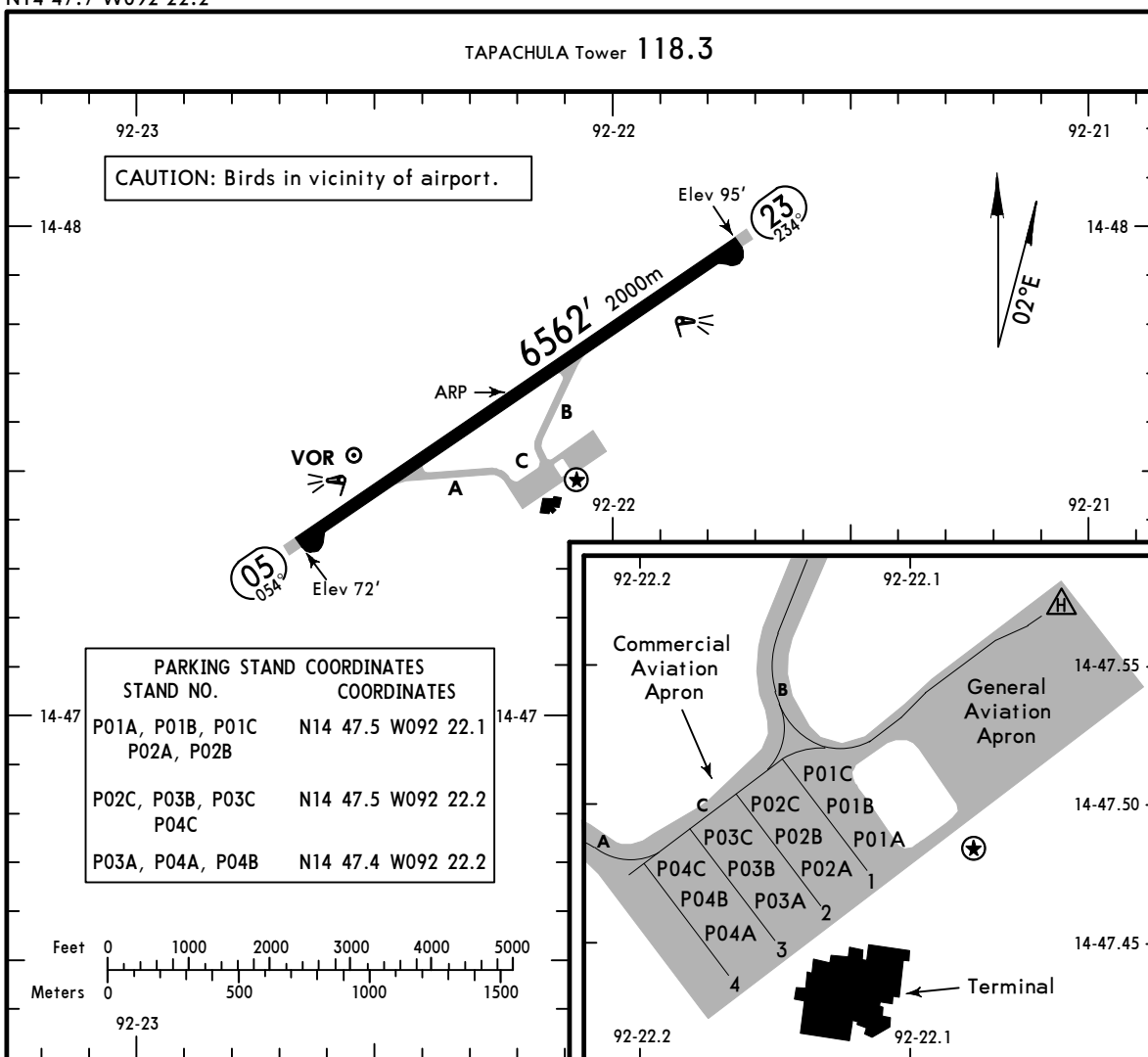
Apt Elev **95'**
N14 47.7 W092 22.2



10 JUN 22 (10-9) Eff 16 Jun

TAPACHULA, MEXICO

TAPACHULA INTL



ADDITIONAL RUNWAY INFORMATION

RWY	Landing Lights	USABLE LENGTHS		TAKE-OFF	WIDTH
		Threshold	Glide Slope		
05 23	HIRL REIL PAPI-L (angle 3.0°)				148' 45m

TAKE-OFF		FOR FILING AS ALTERNATE	
All Rwys			
1 & 2 Eng	300-1	A	800-2
3 & 4 Eng	200-1/2	B	
		C	
		D	

MMTP/TAP
TAPACHULA INTL

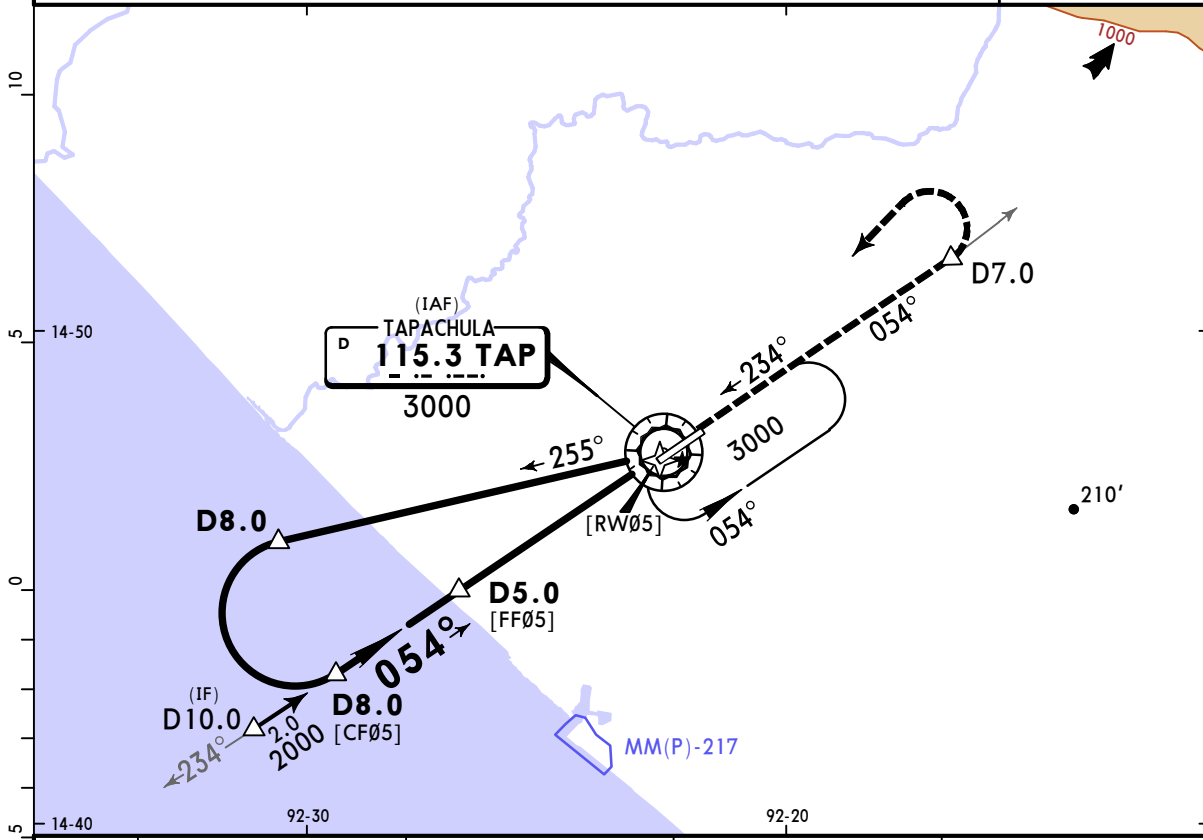
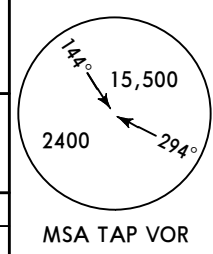
JEPPESSEN
19 JAN 24 **(13-1)** Eff 25 Jan

TAPACHULA, MEXICO
VOR Z Rwy 05

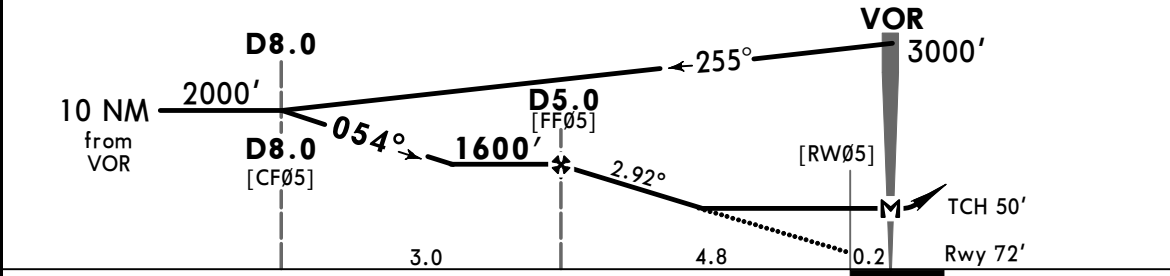
*TAPACHULA Tower 118.3

BRIEFING STRIP™

VOR TAP 115.3	Final Apch Crs 054°	D5.0 1600' (1528')	MDA(H) 520' (448')	Apt Elev 95' Rwy 72'
MISSED APCH: Climb via TAP VOR R-054 to D7.0, then turn LEFT within 10 NM to TAP VOR at the minimum holding altitude.				
Alt Set: IN (MB O/R)		Rwy Elev: 3 hPa	Trans level: FL 195	Trans alt: 18500'
DME required.				



TAP DME	5.0	4.0	3.0	2.0
ALTITUDE	1600'	1290'	980'	680'



Gnd speed-Kts	70	90	100	120	140	160	REIL PAPI-L	TAP on 115.3 R-054	D7.0	
Descent Angle	2.92°	362	465	517	620	723				826
MAP at VOR										
D5.0 to MAP	5.0	4:17	3:20	3:00	2:30	2:09	1:53			

STRAIGHT-IN LANDING RWY 05		CIRCLE-TO-LAND	
MDA(H) 520' (448')		MDA(H)	
A	1	90	580' (485') - 1
B		120	
C	1¼	140	580' (485') - 1½
D	1½	165	680' (585') - 2

MMTP/TAP TAPACHULA INTL

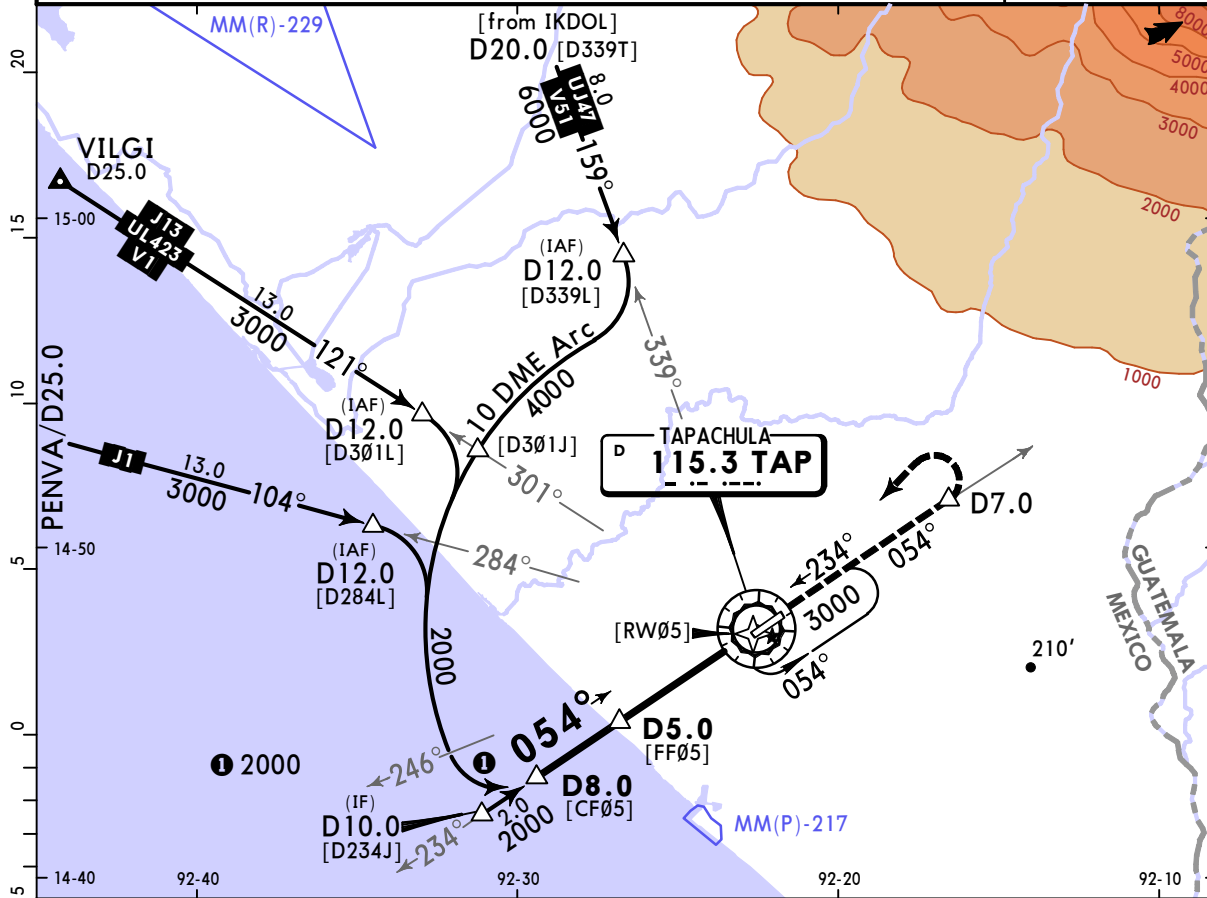
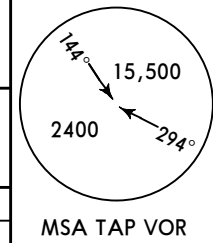
JEPPESSEN
19 JAN 24 **(13-2)** Eff 25 Jan

TAPACHULA, MEXICO VOR Y Rwy 05

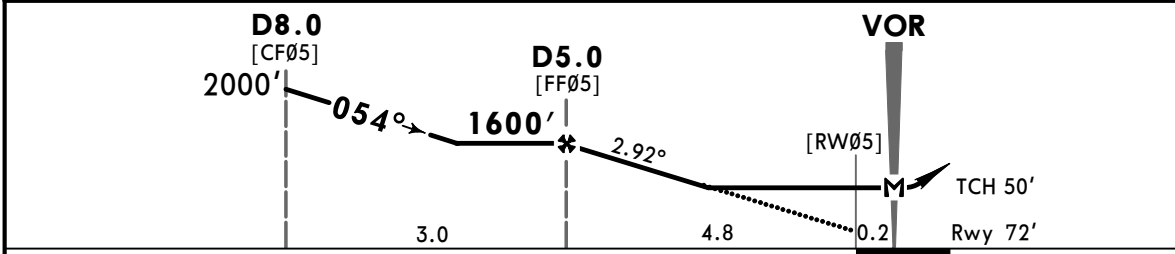
*TAPACHULA Tower 118.3

BRIEFING STRIP™

VOR TAP 115.3	Final Apch Crs 054°	D5.0 1600' (1528')	MDA(H) 520' (448')	Apt Elev 95' Rwy 72'
MISSED APCH: Climb via TAP VOR R-054 to D7.0, then turn LEFT within 10 NM to TAP VOR at the minimum holding altitude.				
Alt Set: IN (MB O/R) Rwy Elev: 3 hPa Trans level: FL 195 Trans alt: 18500'				
DME required.				



TAP DME	5.0	4.0	3.0	2.0
ALTITUDE	1600'	1290'	980'	680'



Gnd speed-Kts	70	90	100	120	140	160	REIL PAPI-L	TAP on 115.3 R-054	D7.0
Descent Angle 2.92°	362	465	517	620	723	826			
MAP at VOR or D5.0 to MAP	5.0	4:17	3:20	3:00	2:30	2:09			

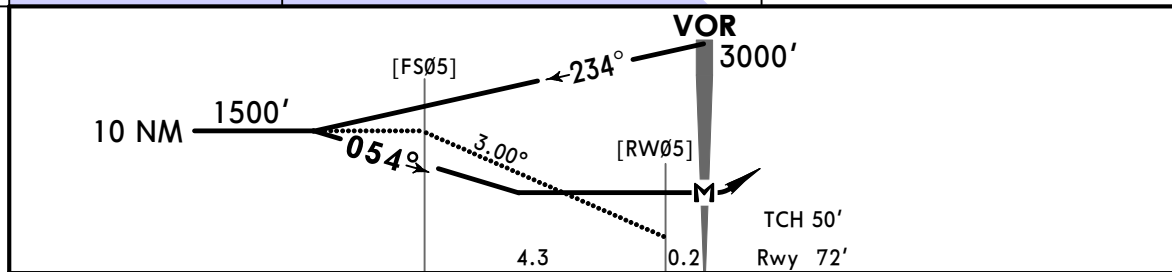
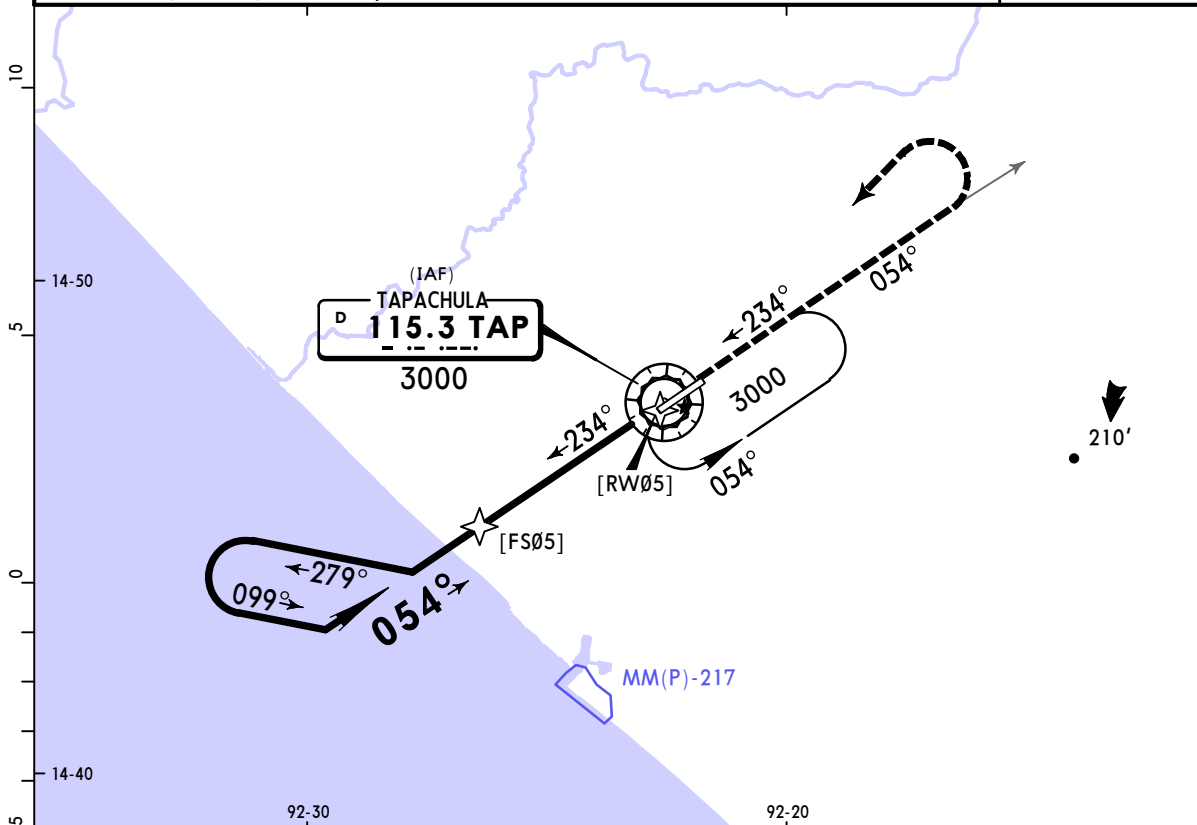
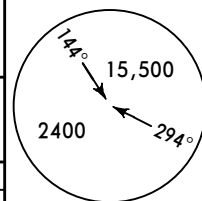
STRAIGHT-IN LANDING RWY 05			CIRCLE-TO-LAND		
MDA(H) 520' (448')			MDA(H)		
A	1	90	580' (485') -1		
B	1	120	580' (485') -1		
C	1 1/4	140	580' (485') -1 1/2		
D	1 1/2	165	680' (585') -2		

MMTP/TAP
TAPACHULA INTL

JEPPESSEN
19 JAN 24 **13-3** Eff 25 Jan

TAPACHULA, MEXICO
VOR X Rwy 05

*TAPACHULA Tower 118.3																				
BRIEFING STRIP™	VOR TAP 115.3	Final Apch Crs 054°	No FAF	MDA(H) 580' (508')	Apt Elev 95' Rwy 72'															
	MISSED APCH: Climb via TAP VOR R-054, then turn LEFT within 10 NM to TAP VOR at the minimum holding altitude.																			
	MISSED APCH: Max Distance Outbound Track 7 NM <table border="1"> <tr> <td>Gnd speed-Kts</td> <td>80</td> <td>100</td> <td>120</td> <td>140</td> <td>160</td> <td>180</td> <td>200</td> </tr> <tr> <td>Time</td> <td>5:15</td> <td>4:12</td> <td>3:30</td> <td>3:00</td> <td>2:37</td> <td>2:20</td> <td>2:06</td> </tr> </table>					Gnd speed-Kts	80	100	120	140	160	180	200	Time	5:15	4:12	3:30	3:00	2:37	2:20
Gnd speed-Kts	80	100	120	140	160	180	200													
Time	5:15	4:12	3:30	3:00	2:37	2:20	2:06													
Alt Set: IN (MB O/R)		Rwy Elev: 3 hPa	Trans level: FL 195	Trans alt: 18500'																



Gnd speed-Kts	70	90	100	120	140	160	REIL PAPI-L	↑ on TAP 115.3 R-054
Descent Angle 3.00°	372	478	531	637	743	849		
MAP at VOR								

STRAIGHT-IN LANDING RWY 05		CIRCLE-TO-LAND	
MDA(H) 580' (508')		Max Kts	MDA(H)
A	1	90	580' (485') - 1
B		120	
C	1½	140	580' (485') - 1½
D		165	680' (585') - 2

MMTP/TAP TAPACHULA INTL

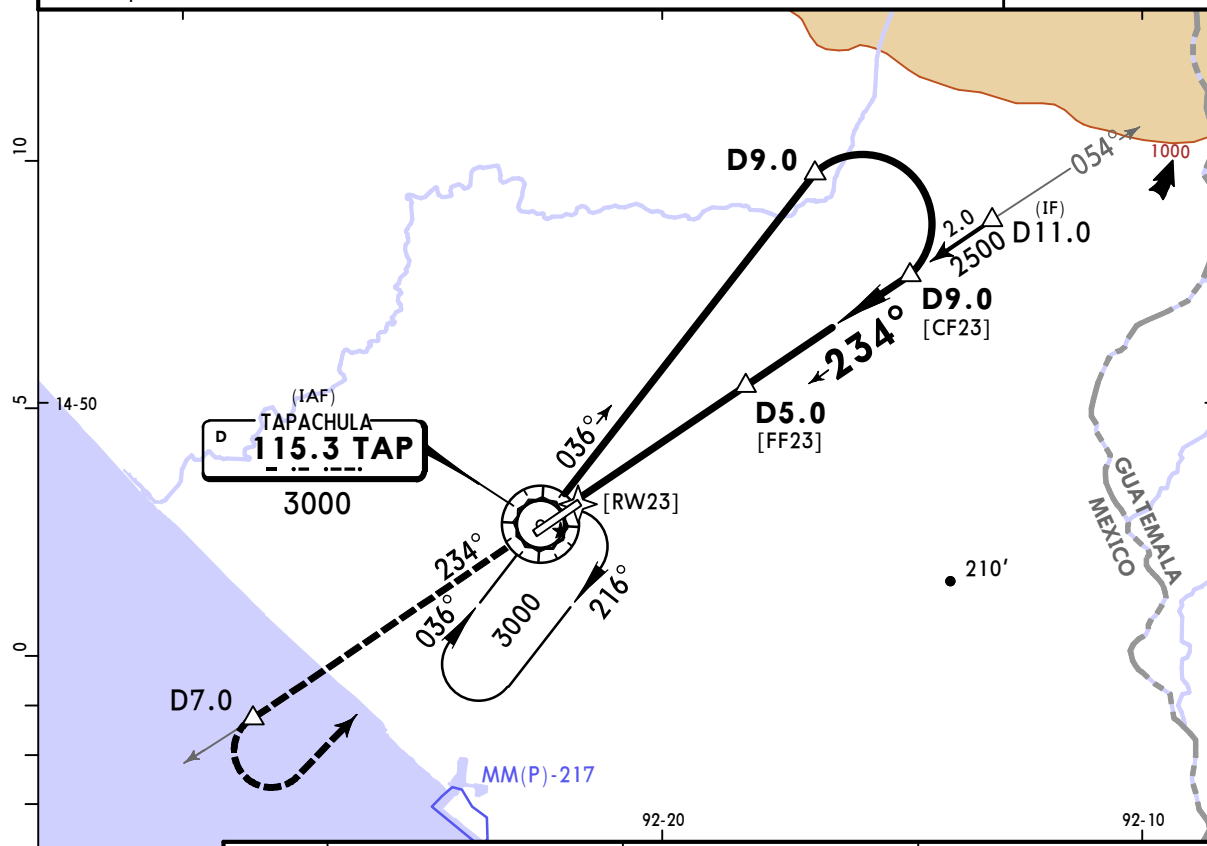
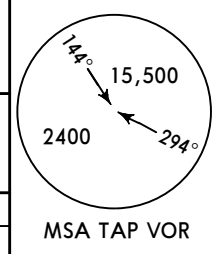
JEPPESEN
19 JAN 24 **13-4** Eff 25 Jan

TAPACHULA, MEXICO VOR Z Rwy 23

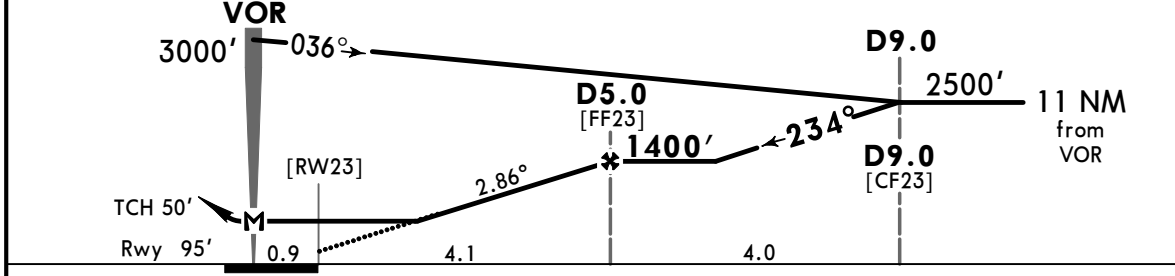
*TAPACHULA Tower 118.3

BRIEFING STRIP™

VOR TAP 115.3	Final Apch Crs 234°	D5.0 1400' (1305')	MDA(H) 520' (425')	Apt Elev 95' Rwy 95'
MISSED APCH: Climb via TAP VOR R-234 to D7.0, then turn LEFT within 10 NM to TAP VOR at the minimum holding altitude.				
Alt Set: IN (MB O/R)		Rwy Elev: 4 hPa	Trans level: FL 195	Trans alt: 18500'
DME required.				



TAP DME	3.0	4.0	5.0
ALTITUDE	790'	1090'	1400'



Gnd speed-Kts	70	90	100	120	140	160	REIL PAPI-L	TAP on 115.3 R-234	D7.0
Descent Angle	2.86°	354	455	506	607	708			
MAP at VOR									
D5.0 to MAP	5.0	4:17	3:20	3:00	2:30	2:09			

STRAIGHT-IN LANDING RWY 23			CIRCLE-TO-LAND		
MDA(H) 520' (425')			MDA(H)		
A	1		Max Kts	90	
B	1		120	580' (485') -1	
C	1 1/4		140	580' (485') -1 1/2	
D	1 1/4		165	680' (585') -2	

MMTP/TAP TAPACHULA INTL

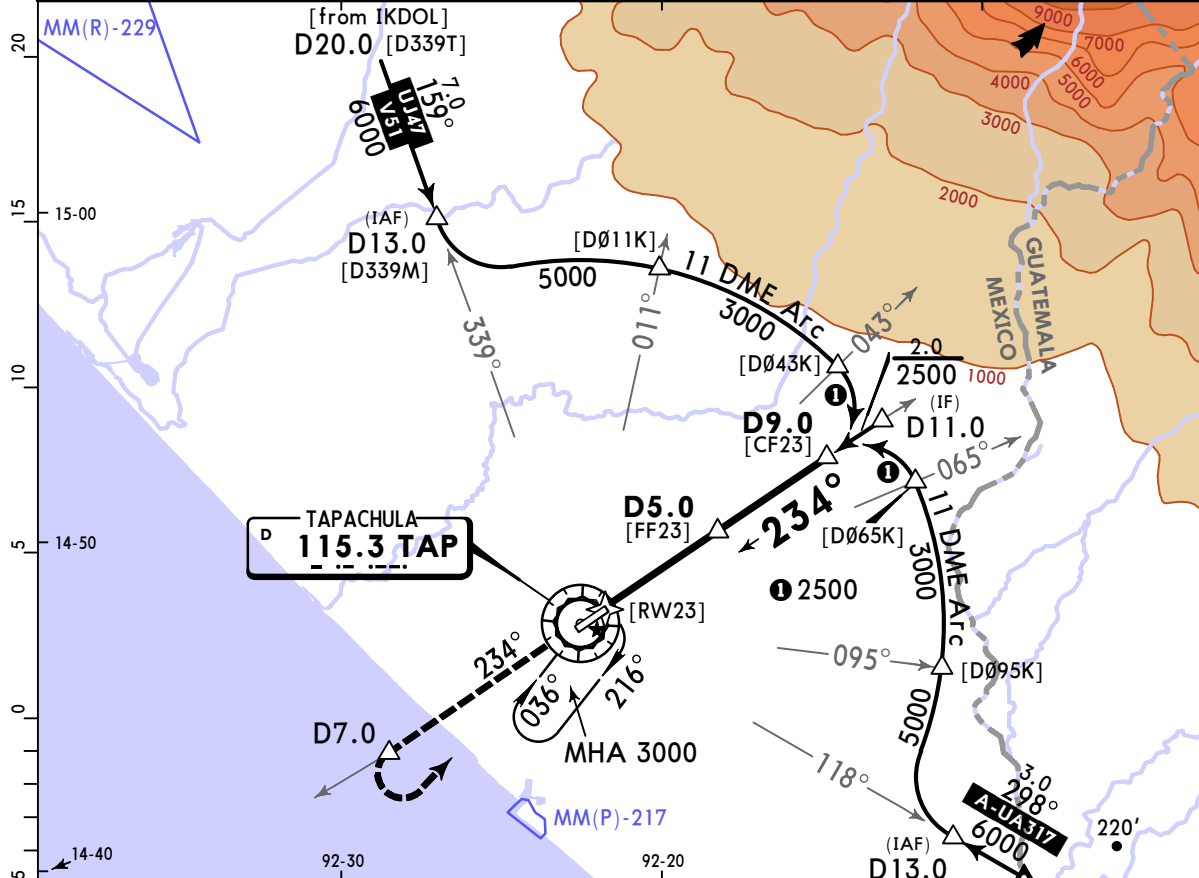
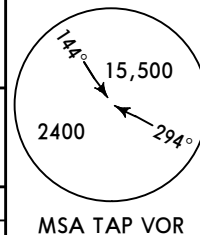
JEPPESSEN
19 JAN 24 **(13-5)** Eff 25 Jan

TAPACHULA, MEXICO VOR Y Rwy 23

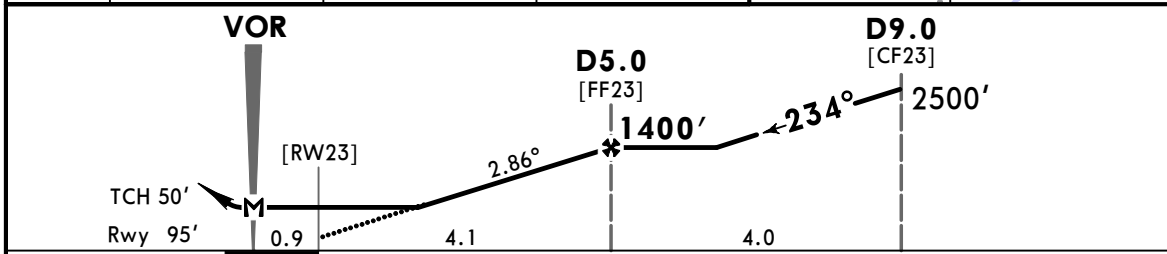
*TAPACHULA Tower 118.3

BRIEFING STRIP™

VOR TAP 115.3	Final Apch Crs 234°	D5.0 1400' (1305')	MDA(H) 520' (425')	Apt Elev 95' Rwy 95'
MISSED APCH: Climb via TAP VOR R-234 to D7.0, then turn LEFT within 10 NM to TAP VOR at the minimum holding altitude.				
Alt Set: IN (MB O/R) Rwy Elev: 4 hPa Trans level: FL 195 Trans alt: 18500'				
DME required.				



TAP DME	3.0	4.0	5.0
ALTITUDE	790'	1090'	1400'



Gnd speed-Kts	70	90	100	120	140	160
Descent Angle 2.86°	354	455	506	607	708	809
MAP at VOR						
D5.0 to MAP	5.0	4:17	3:20	3:00	2:30	2:09
					1:53	

REIL PAPI-L

↑ on **115.3** **D7.0**
R-234

STRAIGHT-IN LANDING RWY 23		CIRCLE-TO-LAND	
MDA(H) 520' (425')		MDA(H)	
A	1 1 ¼	Max Kts	
B		90	580' (485') -1
C		120	580' (485') -1 ½
D		140	680' (585') -2
		165	

CHANGES: Procedure title, requirement note, airspace.

MMTP/TAP
TAPACHULA INTL

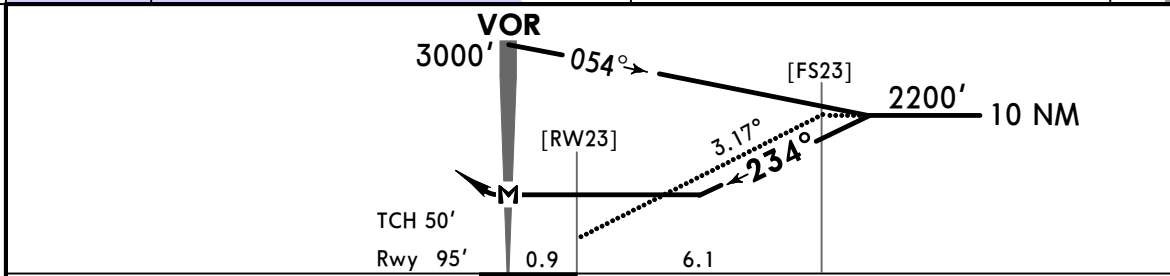
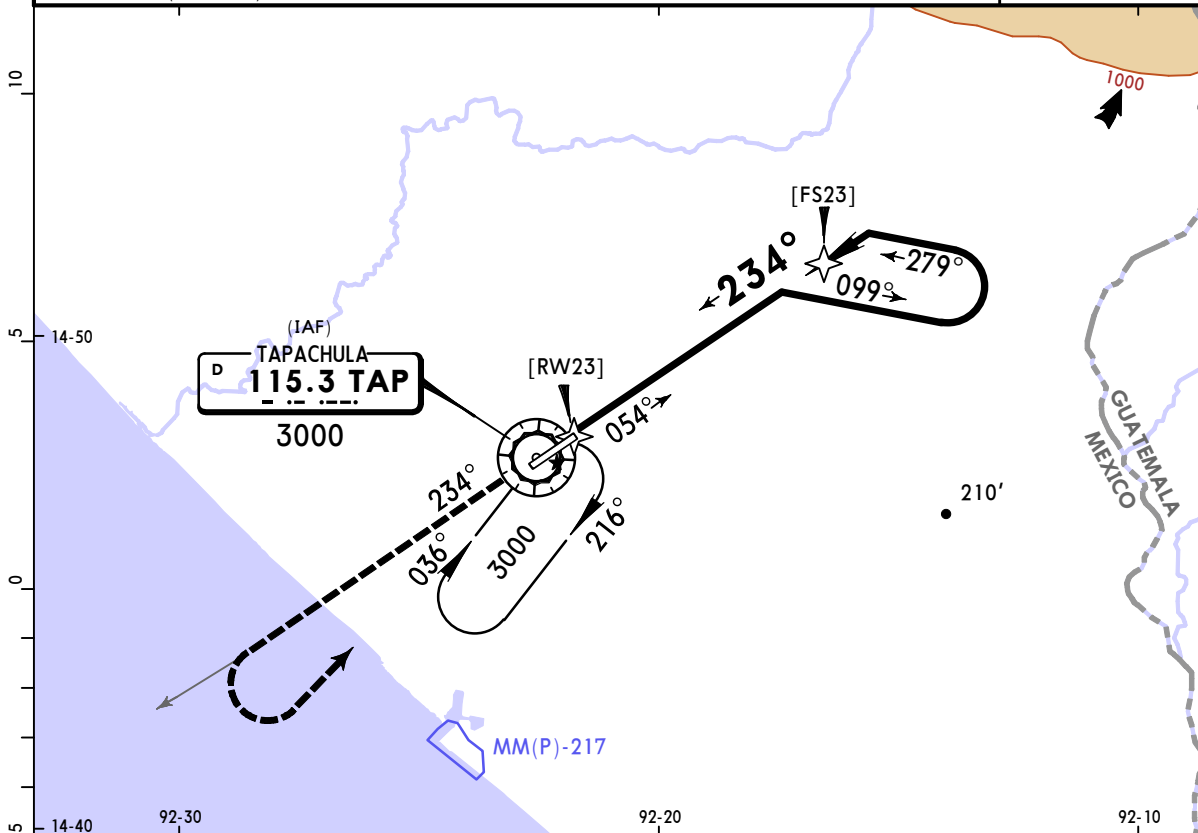
JEPPESSEN
19 JAN 24 **(13-6)** Eff 25 Jan

TAPACHULA, MEXICO
VOR X Rwy 23

*TAPACHULA Tower 118.3

VOR TAP 115.3	Final Apch Crs 234°	No FAF	MDA(H) 1040' (945')	Apt Elev 95' Rwy 95'	<p>MSA TAP VOR</p>															
<p>MISSED APCH: Climb via TAP VOR R-234, then turn LEFT within 10 NM to TAP VOR at the minimum holding altitude.</p>																				
<p>MISSED APCH: Max Distance Outbound Track 7 NM</p> <table border="1" style="width: 100%; border-collapse: collapse;"> <tr> <td style="text-align: left;">Gnd speed-Kts</td> <td>80</td> <td>100</td> <td>120</td> <td>140</td> <td>160</td> <td>180</td> <td>200</td> </tr> <tr> <td style="text-align: left;">Time</td> <td>5:15</td> <td>4:12</td> <td>3:30</td> <td>3:00</td> <td>2:37</td> <td>2:20</td> <td>2:06</td> </tr> </table>						Gnd speed-Kts	80	100	120	140	160	180	200	Time	5:15	4:12	3:30	3:00	2:37	2:20
Gnd speed-Kts	80	100	120	140	160	180	200													
Time	5:15	4:12	3:30	3:00	2:37	2:20	2:06													

Alt Set: IN (MB O/R) Rwy Elev: 4 hPa Trans level: FL 195 Trans alt: 18500'



Gnd Speed-Kts	70	90	100	120	140	160	REIL PAPI-L	↑ on 115.3 R-234	
Descent angle	3.17°	393	505	561	673	785			897
MAP at VOR									

STRAIGHT-IN LANDING RWY 23			CIRCLE-TO-LAND		
MDA(H) 1040' (945')			MDA(H) _____		
A			Max Kts		
B	1¼		90		1040'(945') - 1¼
C	2¾		140		1040'(945') - 2¾
D	3		165		1040'(945') - 3