

General Information

Location: PUERTO ESCONDIDO MEX
ICAO/IATA: MMPS / PXM
Lat/Long: N15° 52.6', W097° 05.3'
Elevation: 294 ft

Airport Use: Public
Daylight Savings: Not Observed
UTC Conversion: +6:00 = UTC
Magnetic Variation: 4.0° E

Fuel Types: 100-130 Octane, Jet A
Customs: Yes
Airport Type: IFR
Landing Fee: No
Control Tower: Yes
Jet Start Unit: No
LLWS Alert: No
Beacon: No

Sunrise: 1204 Z
Sunset: 0104 Z

Runway Information

Runway: 09
Length x Width: 7566 ft x 148 ft
Surface Type: asphalt
TDZ-Elev: 163 ft
Lighting: Edge, REIL

Runway: 27
Length x Width: 7566 ft x 148 ft
Surface Type: asphalt
TDZ-Elev: 292 ft
Lighting: Edge, REIL

Communication Information

Escondido Tower: 118.900
Mexico Control ACC: 123.500 RCO

PUERTO ESCONDIDO, MEXICO

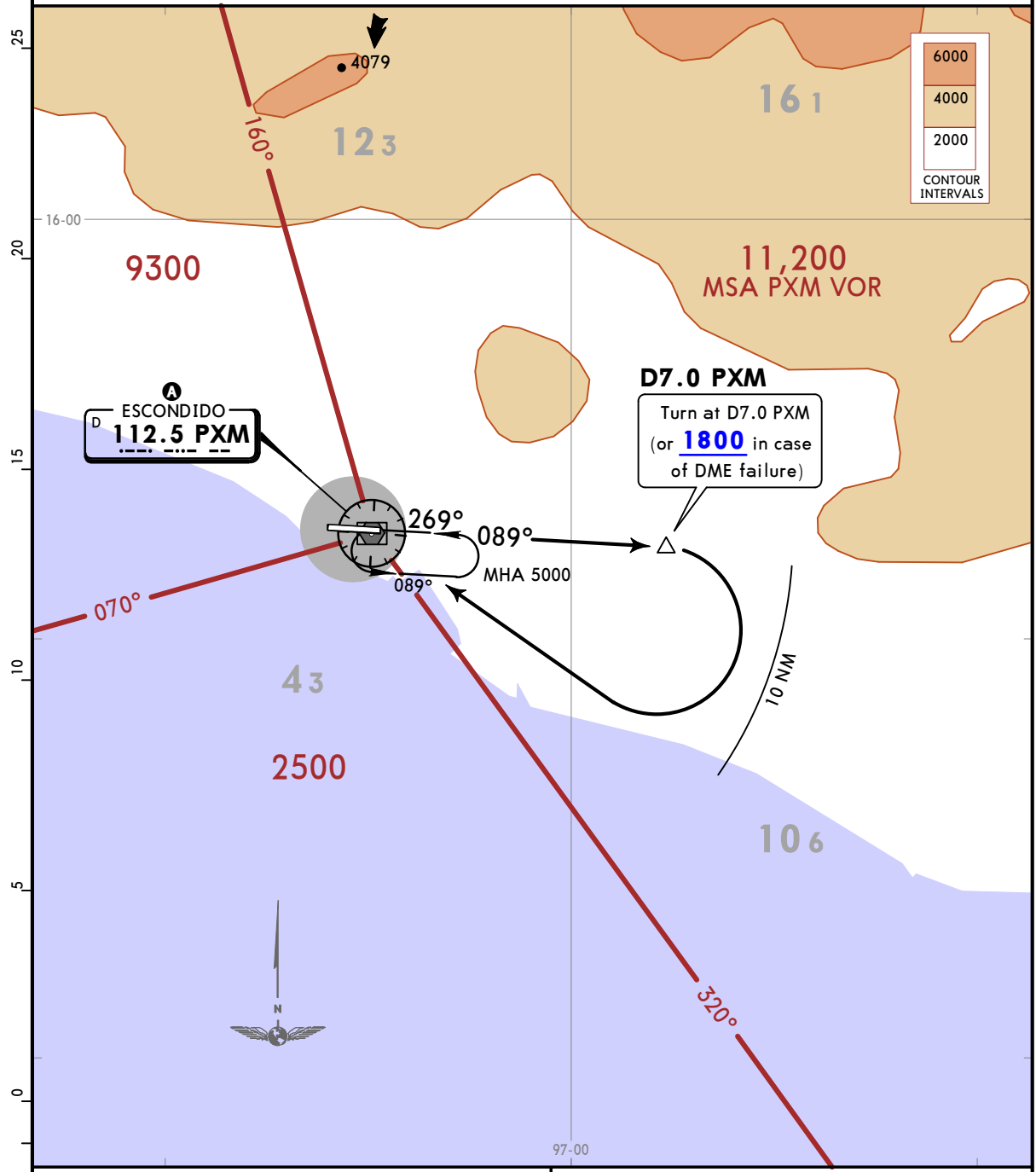
MMPS/PXM
PUERTO ESCONDIDO INTL

JEPPESEN
20 APR 18 **10-3** Eff 26 Apr

SID

Apt Elev 294	Trans alt: 18500
------------------------	------------------

ESCONDIDO 4A (PXM4A) DEPARTURE (RWY 09)



This SID requires a minimum climb gradient of 220 per NM to 5000.

Gnd speed-KT	75	100	150	200	250	300
220 per NM	275	367	550	733	917	1100

A MINIMUM CROSSING ALTITUDE			
ACA	V-1	J-1, UJ-9	2900
CUA		UJ-19	8000
HUX	V-1	J-1, UJ-9	4100
OAX	V-29	UJ-69	8800
TEQ		UJ-71	8000

INITIAL CLIMB

Climb on PXM R089 to D7.0 PXM (or 1800 in case of DME failure), then turn RIGHT within 10 NM to PXM VOR and leave it according to the MCA **A** or ATC instructions.

PUERTO ESCONDIDO, MEXICO

MMPS/PXM



PUERTO ESCONDIDO INTL

20 APR 18

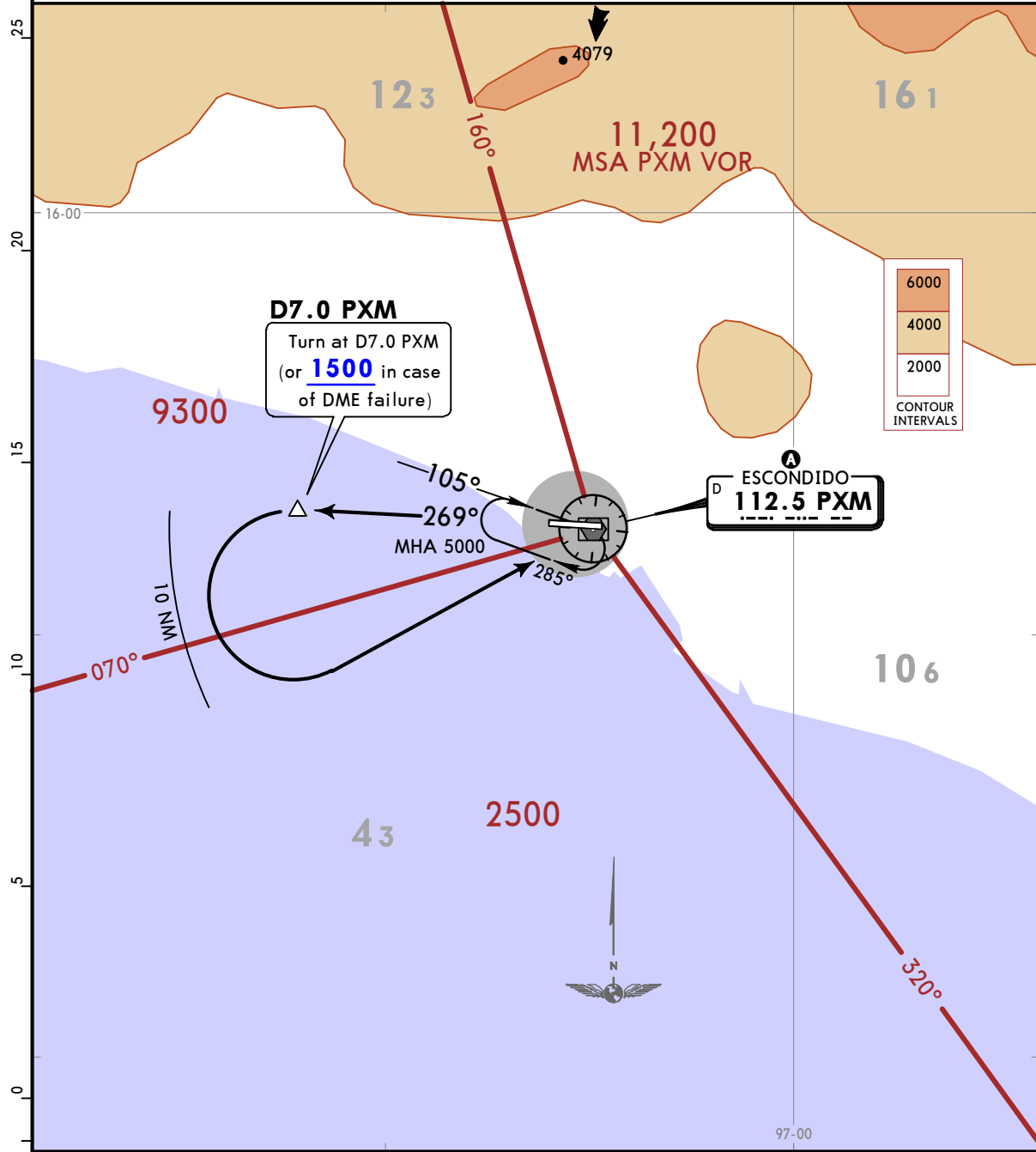
10-3A

Eff 26 Apr

SID

Apt Elev 294	Trans alt: 18500
------------------------	------------------

ESCONDIDO 4B (PXM4B) DEPARTURE (RWY 27)



D7.0 PXM
Turn at D7.0 PXM
(or **1500** in case
of DME failure)

A ESCONDIDO
D **112.5 PXM**

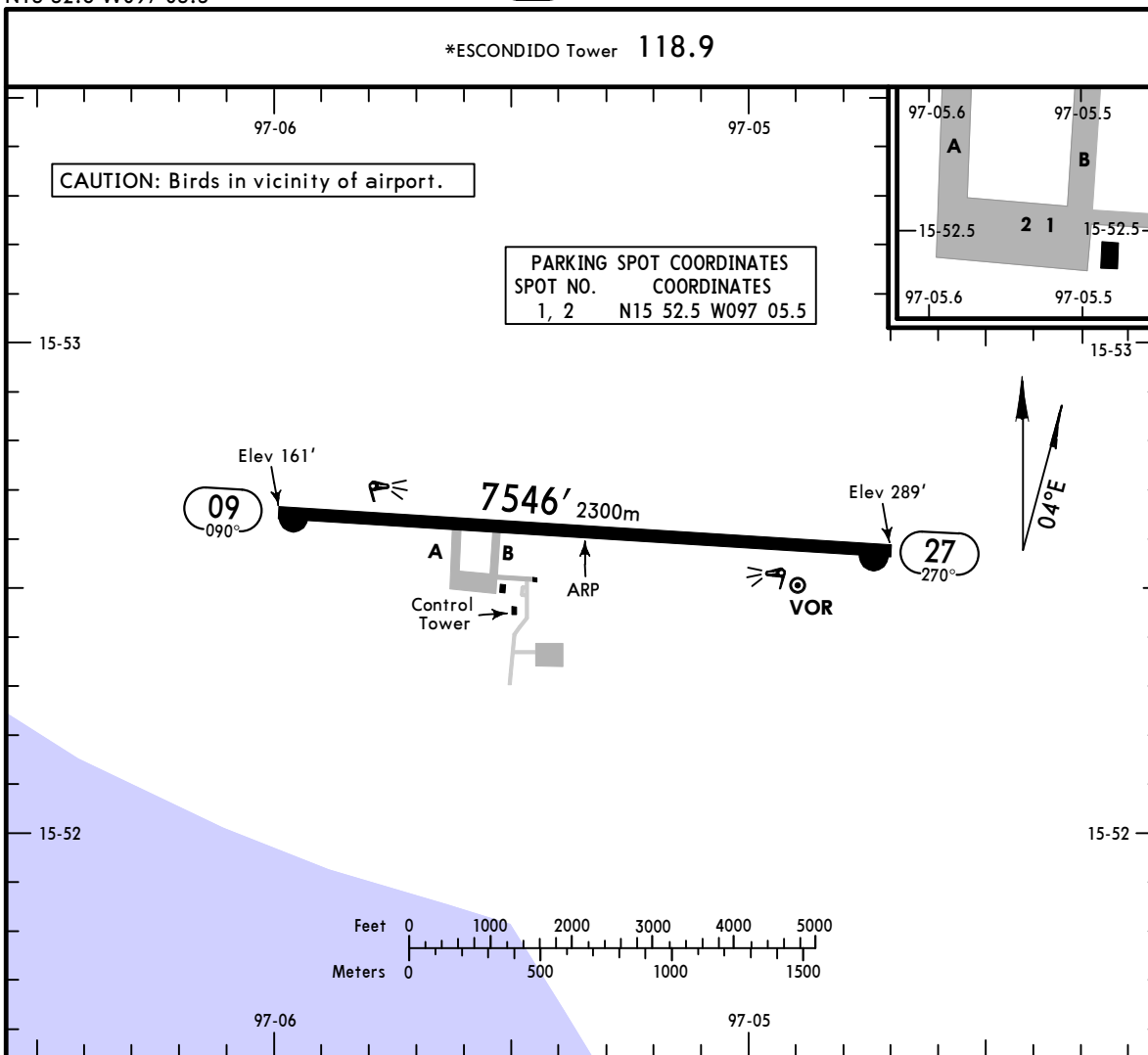
A MINIMUM CROSSING ALTITUDE			
ACA	V-1	J-1, UJ-9	2900
CUA		UJ-19	8000
HUX	V-1	J-1, UJ-9	4100
OAX	V-29	UJ-69	8800
TEQ		UJ-71	8000

INITIAL CLIMB

Climb on PXM R269 to D7.0 PXM (or 1500 in case of DME failure), then turn LEFT within 10 NM to PXM VOR and leave it according to the MCA **A** or ATC instructions.

MMPS/PXM
 Apt Elev **294'**
 N15 52.6 W097 05.3

JEPPESSEN PUERTO ESCONDIDO, MEXICO
 15 JUN 18 **(10-9)** **Eff 21 Jun** **PUERTO ESCONDIDO INTL**

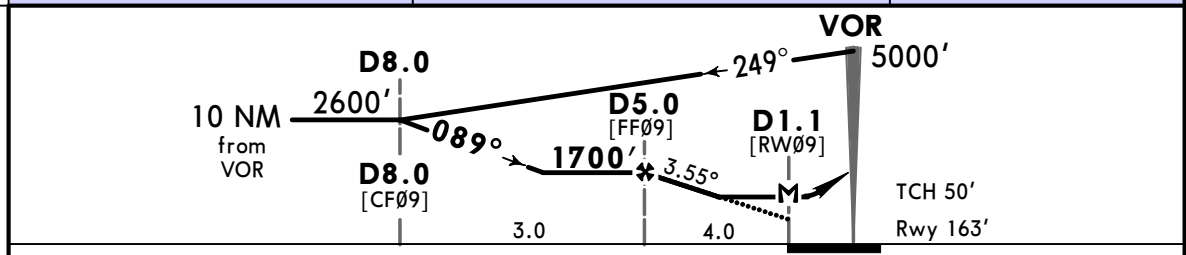
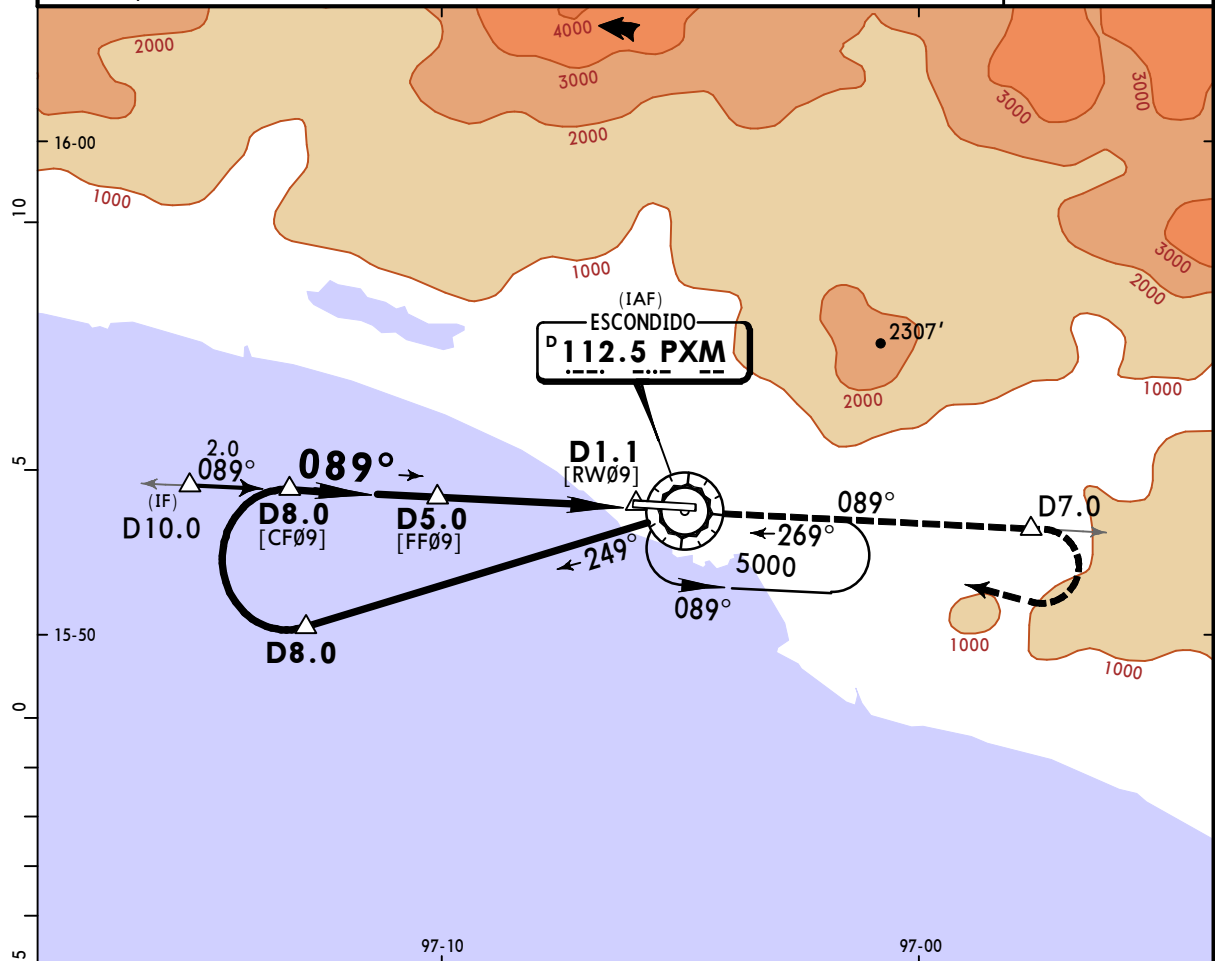
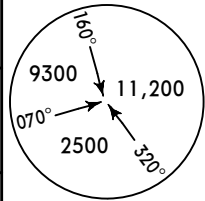


ADDITIONAL RUNWAY INFORMATION					
RWY		USABLE LENGTHS			
		LANDING BEYOND		TAKE-OFF	WIDTH
		Threshold	Glide Slope		
09 27	HIRL REIL PAPI-L (angle 3.0°)				148' 45m

	TAKE-OFF		FOR FILING AS ALTERNATE	
	Rwy 09	Rwy 27	A	B
1 & 2 Eng	500-1	1	800-2	C
3 & 4 Eng	500-1/2	1/2		

MMPS/PXM PUERTO ESCONDIDO INTL 7 JUN 24 (13-1) Eff 13 Jun VOR Z Rwy 09

*MEXICO Control (APP) (R) 123.5				*ESCONDIDO Tower 118.9	
VOR PXM 112.5	Final Apch Crs 089°	D5.0 1700' (1537')	MDA(H) 860' (697')	Apt Elev 294' Rwy 163'	
MISSED APCH: Climb outbound via PXM VOR R-089 to D7.0, then turn RIGHT within 10 NM to PXM VOR at minimum holding altitude.					
Alt Set: IN (MB on req)		Trans level: FL 195		Trans alt: 18500'	
DME required.				MSA PXM VOR	

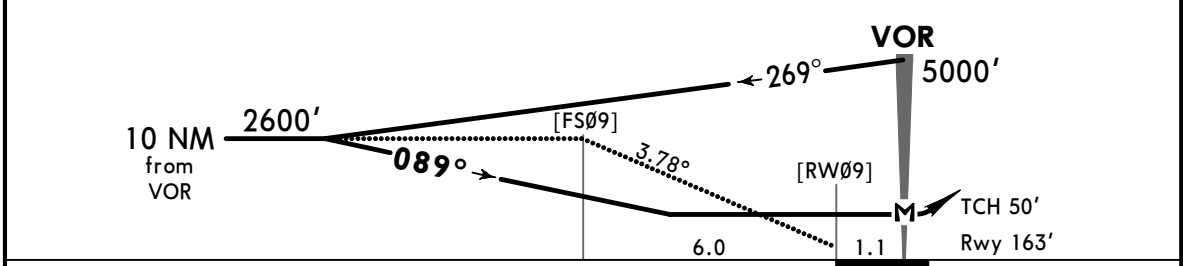
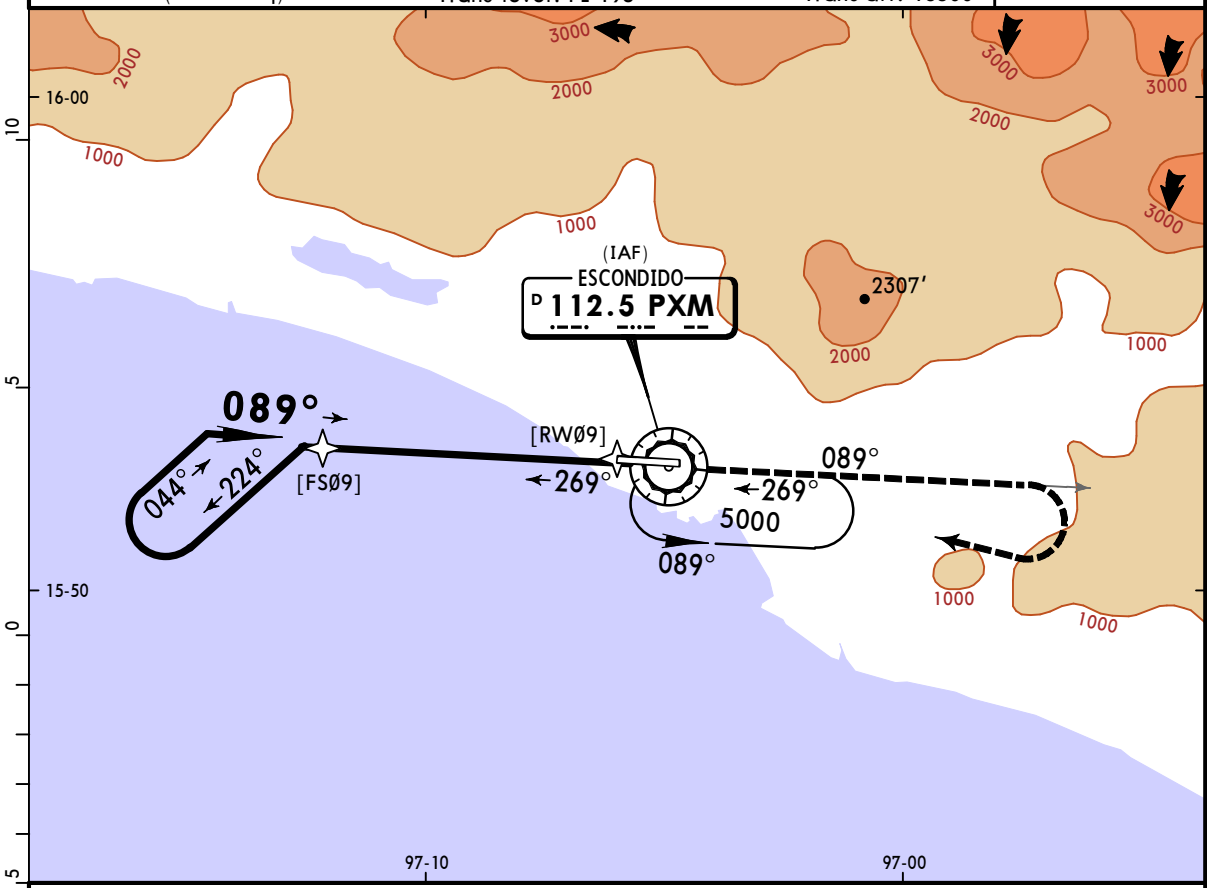
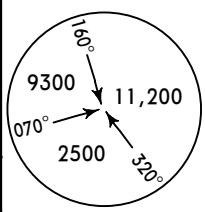


Gnd speed-Kts	70	90	100	120	140	160				
Descent Angle 3.55°	440	565	628	754	880	1005				
MAP at D1.1										

STRAIGHT-IN LANDING RWY09				CIRCLE-TO-LAND			
MDA(H) 860' (697')				Not Authorized North of Rwy 09/27			
				MDA(H)			
A	1			Max Kts	900' (606') -1		
B	2			90	1000' (706') -2		
C	2 1/4			120	1000' (706') -2 1/4		
D				140			
				165			

MMPS/PXM **JEPPESEN** **PUERTO ESCONDIDO, MEXICO**
PUERTO ESCONDIDO INTL 7 JUN 24 **(13-2)** **Eff 13 Jun** **VOR Y Rwy 09**

*MEXICO Control (APP) (R) 123.5			*ESCONDIDO Tower 118.9				
VOR PXM 112.5	Final Apch Crs 089°	No FAF	MDA(H) 900' (737')	Apt Elev 294' Rwy 163'			
MISSED APCH: Climb outbound via PXM VOR R-089, then turn RIGHT within 10 NM to PXM VOR at the minimum holding altitude.							
MAX OUTBOUND LEG DISTANCE 7 NM							
Gnd Speed-Kts	80	100	120	140	160	180	200
Time	5:15	4:12	3:30	3:00	2:38	2:20	2:06
Alt Set: IN (MB on req)			Trans level: FL 195		Trans alt: 18500'		MSA PXM VOR



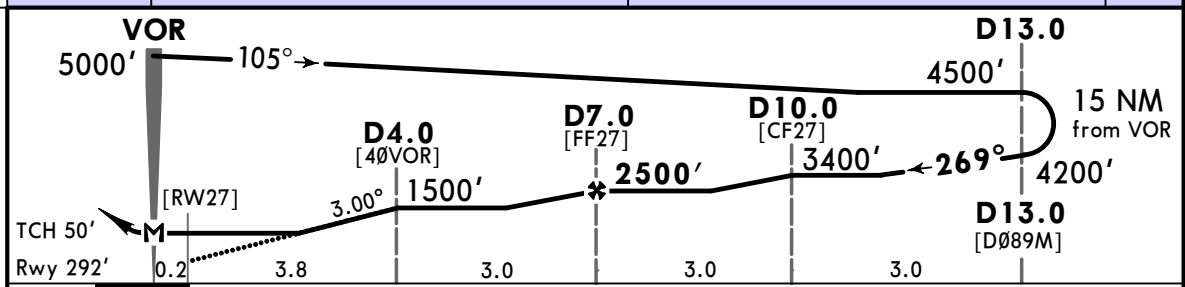
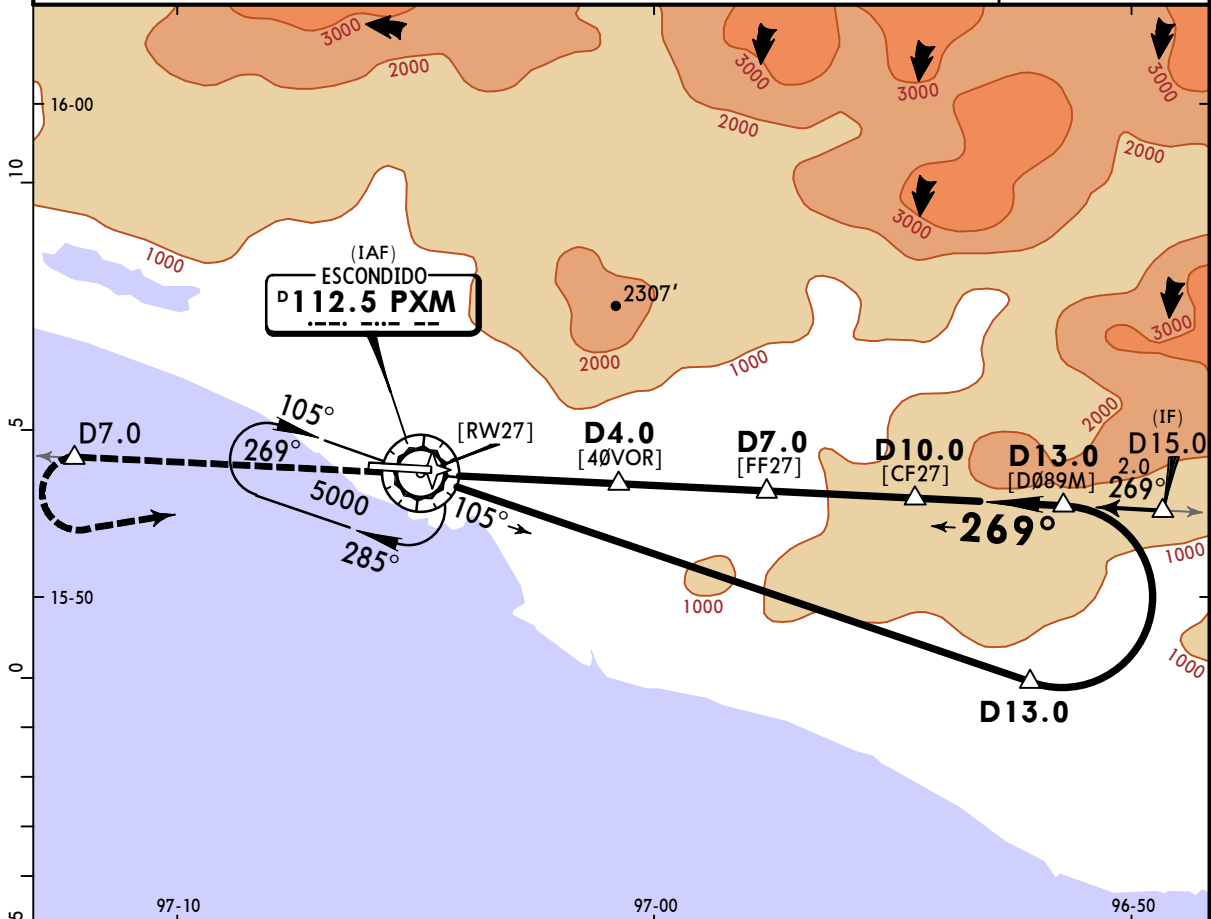
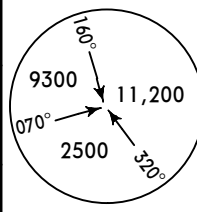
Gnd speed-Kts	70	90	100	120	140	160	REIL PAPI-L	PXM via 112.5 R-089
Descent Angle 3.78°	468	602	669	803	937	1071		
MAP at VOR								

STRAIGHT-IN LANDING RWY 09			CIRCLE-TO-LAND	
MDA(H) 900' (737')			Not Authorized North of Rwy 09/27	
			Max Kts	MDA(H)
A		1	90	900' (606') -1
B			120	
C		2	140	1000' (706') -2
D		2 1/4	165	1000' (706') -2 1/4

CHANGES: Procedure title.

MMPS/PXM PUERTO ESCONDIDO INTL 7 JUN 24 (13-3) Eff 13 Jun VOR Rwy 27

*MEXICO Control (APP) (R) 123.5			*ESCONDIDO Tower 118.9		
VOR PXM 112.5	Final Apch Crs 269°	D7.0 2500' (2208')	MDA(H) 840' (548')	Apt Elev 294' Rwy 292'	
MISSED APCH: Climb outbound via PXM VOR R-269 to D7.0, then turn LEFT within 10 NM to PXM VOR at minimum holding altitude.					
Alt Set: IN (MB on req)		Trans level: FL 195		Trans alt: 18500'	
DME required.			MSA PXM VOR		



Gnd speed-Kts	70	90	100	120	140	160				
Descent Angle 3.00°	372	478	531	637	743	849				
MAP at VOR										

STRAIGHT-IN LANDING RWY 27				CIRCLE-TO-LAND			
MDA(H) 840' (548')				Not Authorized North of Rwy 09/27			
			Max Kts				MDA(H)
A			90				900' (606') -1
B		1	120				1000' (706') -2
C		1½	140				1000' (706') -2
D		1¾	165				1000' (706') -2¼