

General Information

Location: TOLUCA MEX
ICAO/IATA: MMTO / TLC
Lat/Long: N19° 20.2', W099° 34.0'
Elevation: 8466 ft

Airport Use: Public
Daylight Savings: Not Observed
UTC Conversion: +6:00 = UTC
Magnetic Variation: 4.0° E

Fuel Types: 100-130 Octane, Jet A-1
Customs: Yes
Airport Type: IFR
Landing Fee: No
Control Tower: Yes
Jet Start Unit: No
LLWS Alert: No
Beacon: No

Sunrise: 1222 Z
Sunset: 0059 Z

Runway Information

Runway: 15
Length x Width: 13780 ft x 148 ft
Surface Type: asphalt
TDZ-Elev: 8463 ft
Lighting: Edge, ALS, Centerline, TDZ

Runway: 33
Length x Width: 13780 ft x 148 ft
Surface Type: asphalt
TDZ-Elev: 8464 ft
Lighting: Edge, Centerline
Displaced Threshold: 525 ft

Communication Information

ATIS: 127.800
Toluca Tower: 118.000
Toluca Ground: 134.000
Toluca Clearance Delivery: 134.000

Toluca Approach: 119.350

Mexico Arrival: 129.650

Mexico Departure: 129.100

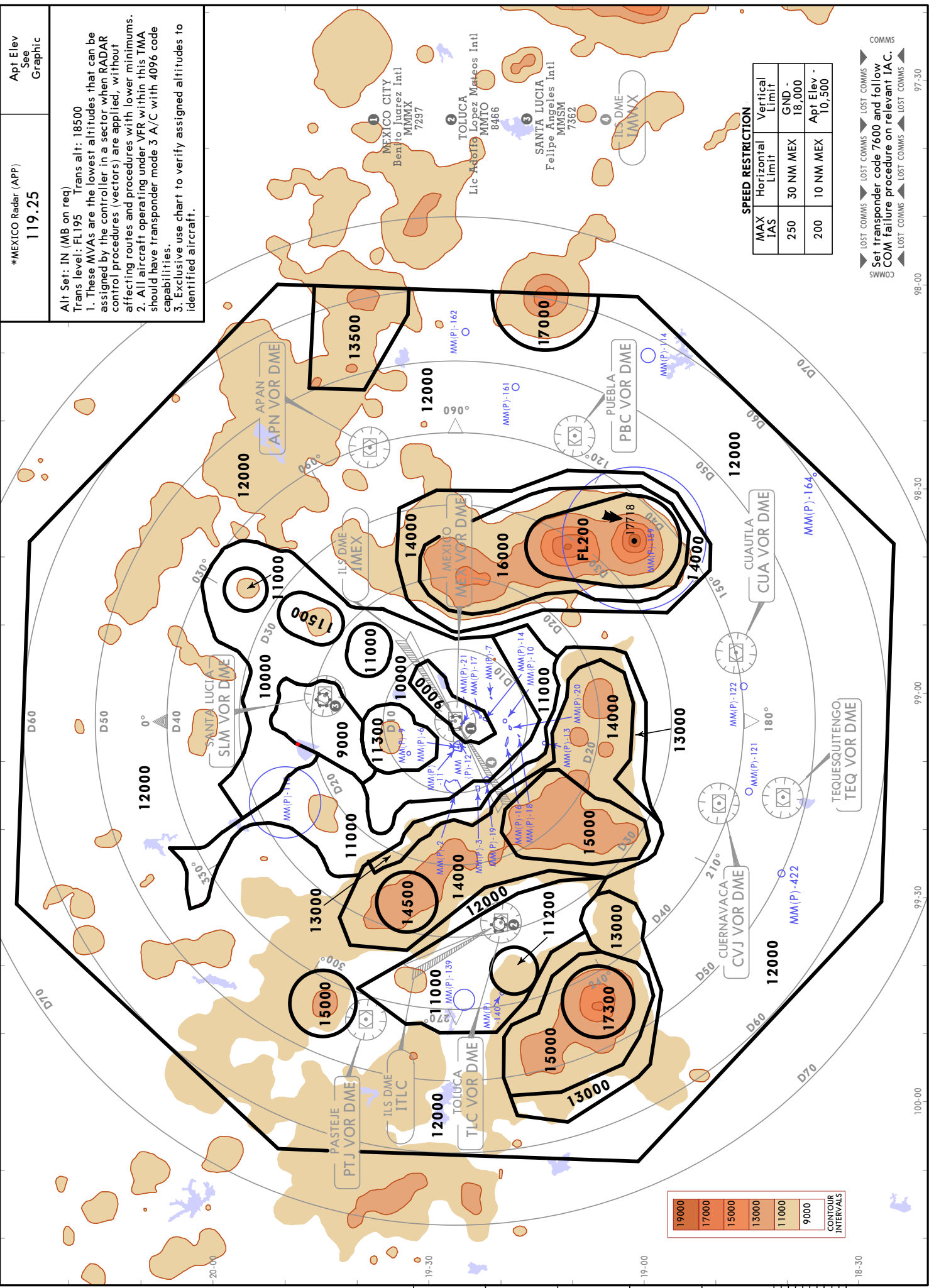
Toluca Information: 122.300 AFIS

RADAR MINIMUM ALTITUDES

*MEXICO Radar (APP)
119.25
Apt Elev See Graphic

Alt Set: IN (MB on req)
Trans level: FL195 Trans alt: 18500
1. These MVAs are the lowest altitudes that can be assigned by the controller in a sector when RADAR control procedures (vectors) are applied, without affecting routes and procedures with lower minimums.
2. All aircraft operating under VFR within this TMA should have transponder mode 3 A/C with 4096 code capabilities.
3. Exclusive use chart to verify assigned altitudes to identified aircraft.

MMM/MEX
BENITO JUAREZ INTL
(ALSO SERVES LIC ADOLFO LOPEZ
MATEOS INTL & FELIPE ANGELES INTL)



SPEED RESTRICTION

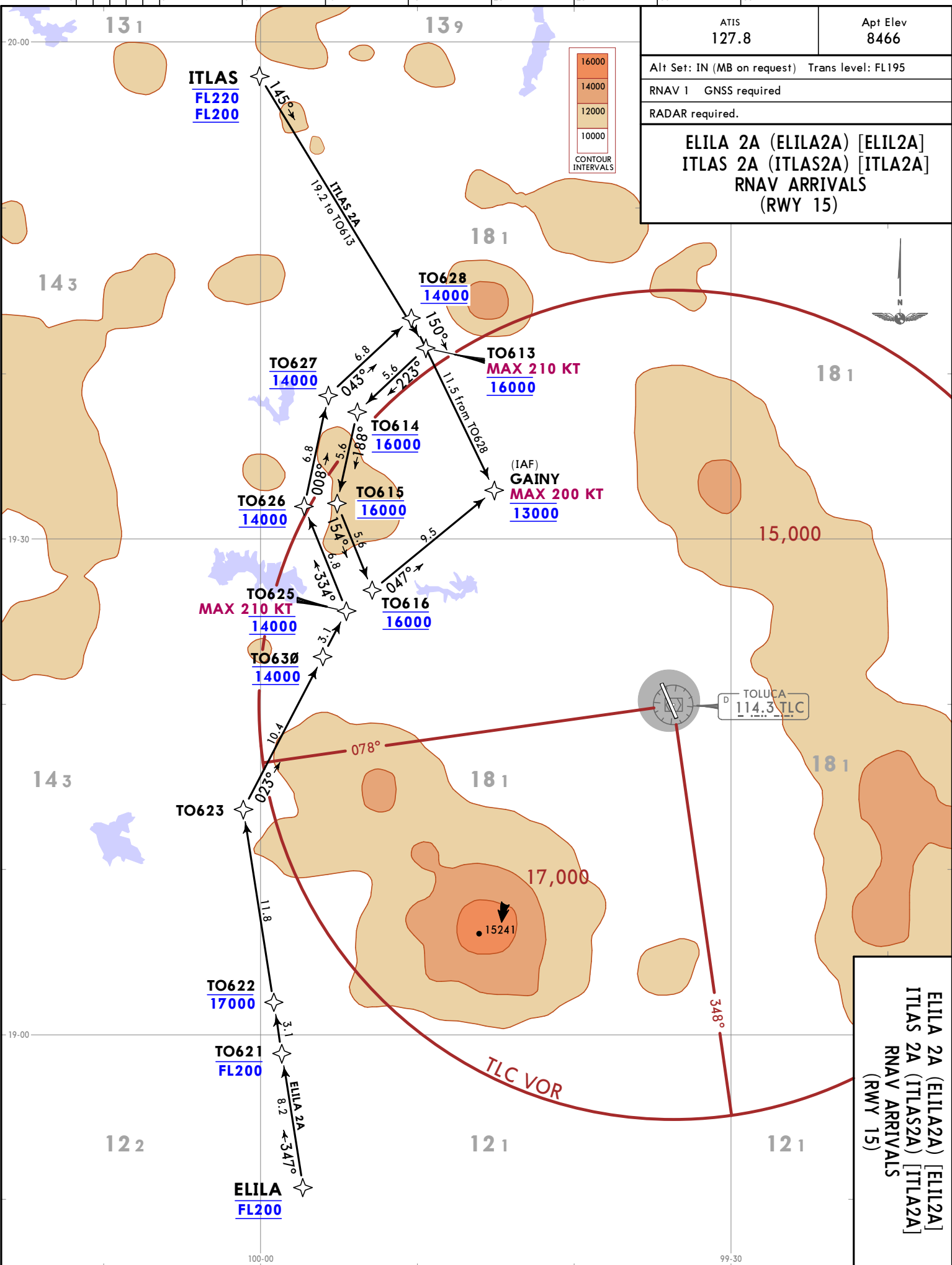
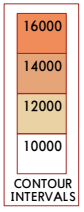
MAX IAS	Horizontal Limit	Vertical Limit
250	30 NM MEX	GND - 18,000
200	10 NM MEX	Apt Elev - 10,500

LOST COMMS
Set transponder code 7600 and follow COM failure procedure on relevant IAC.
COMMIS

CHANGES: None

MMTO/TLC
LIC ADOLFO LOPEZ MATEOS INTL

ATIS 127.8	Apt Elev 8466
Alt Set: IN (MB on request) Trans level: FL195	
RNAV 1 GNSS required	
RADAR required.	
ELILA 2A (ELILA2A) [ELIL2A] ITLAS 2A (ITLAS2A) [ITLA2A] RNAV ARRIVALS (RWY 15)	

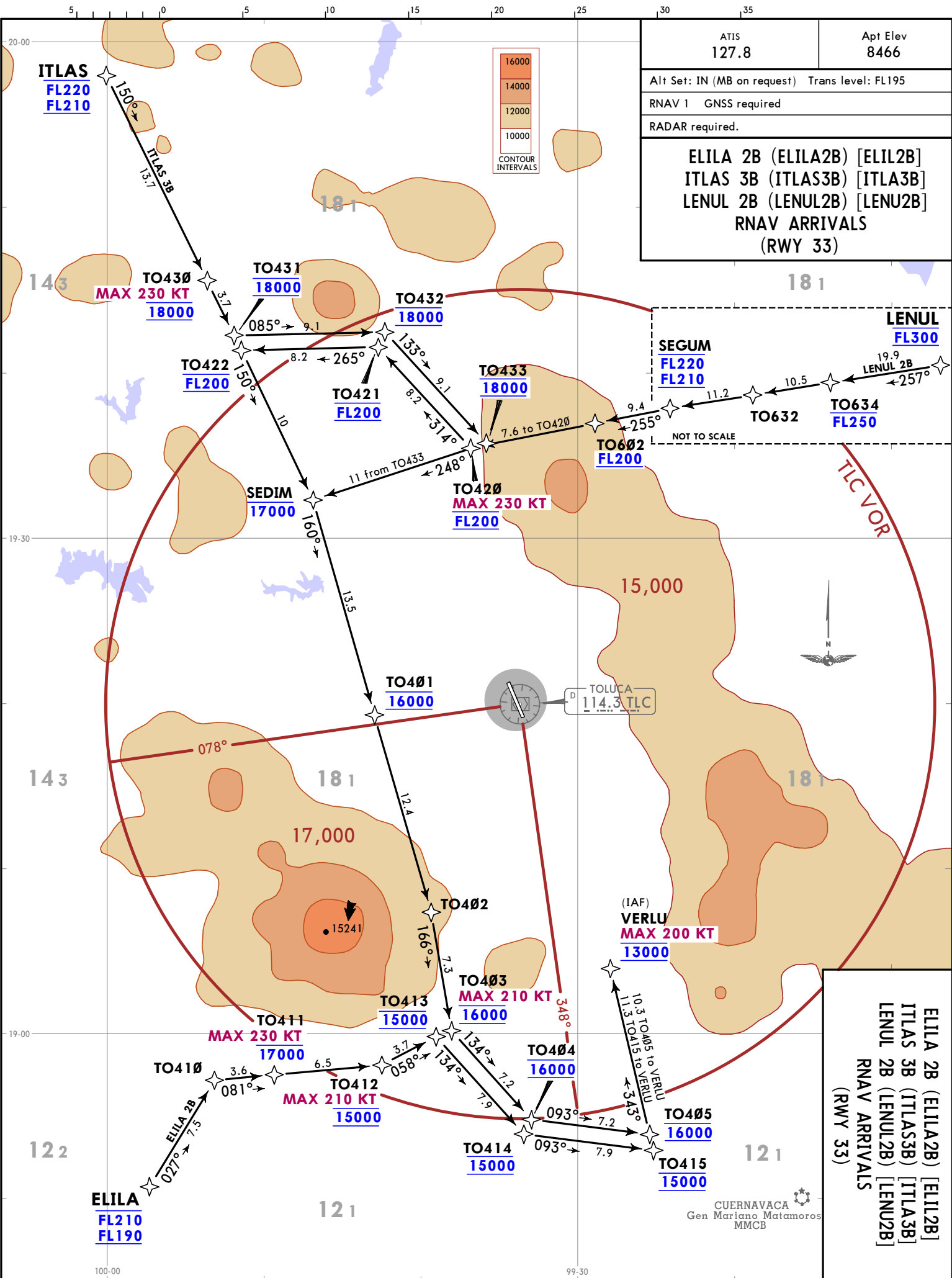


ELILA 2A (ELILA2A) [ELIL2A]
ITLAS 2A (ITLAS2A) [ITLA2A]
RNAV ARRIVALS
(RWY 15)

JEPPESSEN TOLUCA, MEXICO
12 APR 24 (10-2) EFF 18 APR RNAV STAR

CHANGES: Procedures ITLAS 2B & LENUL 1B renumbered ITLAS 3B & LENUL 2B; waypoint TO601 renamed SEGUM; altitudes restrictions revised.

© JEPPESEN, 2020, 2024. ALL RIGHTS RESERVED.



ATIS 127.8	Apt Elev 8466
Alt Set: IN (MB on request) Trans level: FL195	
RNAV 1 GNSS required	
RADAR required.	
ELILA 2B (ELILA2B) [ELIL2B] ITLAS 3B (ITLAS3B) [ITLA3B] LENUL 2B (LENUL2B) [LENU2B] RNAV ARRIVALS (RWY 33)	

LENUL FL300
SEGUM FL220 FL210
TO634 FL250
TO632
TO602 FL200
TO420 MAX 230 KT FL200
TO433 18000
TO432 18000
TO431 18000
TO430 MAX 230 KT 18000
TO422 FL200
TO421 FL200
TO401 16000
TO402
TO403 MAX 210 KT 16000
TO413 15000
TO411 MAX 230 KT 17000
TO410
TO412 MAX 210 KT 15000
TO414 15000
TO415 15000
TO404 16000
TO405 16000
VERLU (IAF) MAX 200 KT 13000
ELILA FL210 FL190

MMTO/TLC
LIC ADOLFO LOPEZ MATEOS INTL
JEPPESEN
10-2A
12 APR 24
EFF 18 APR
TOLUCA, MEXICO
RNAV STAR

ELILA 2B (ELILA2B) [ELIL2B]
ITLAS 3B (ITLAS3B) [ITLA3B]
LENUL 2B (LENUL2B) [LENU2B]
RNAV ARRIVALS (RWY 33)

CUERNAVACA
Gen Mariano Matamoros
MMCB

JEPPESSEN TOLUCA, MEXICO
 5 JUL 24 (10-2B) Eff 11 Jul RNAV STAR

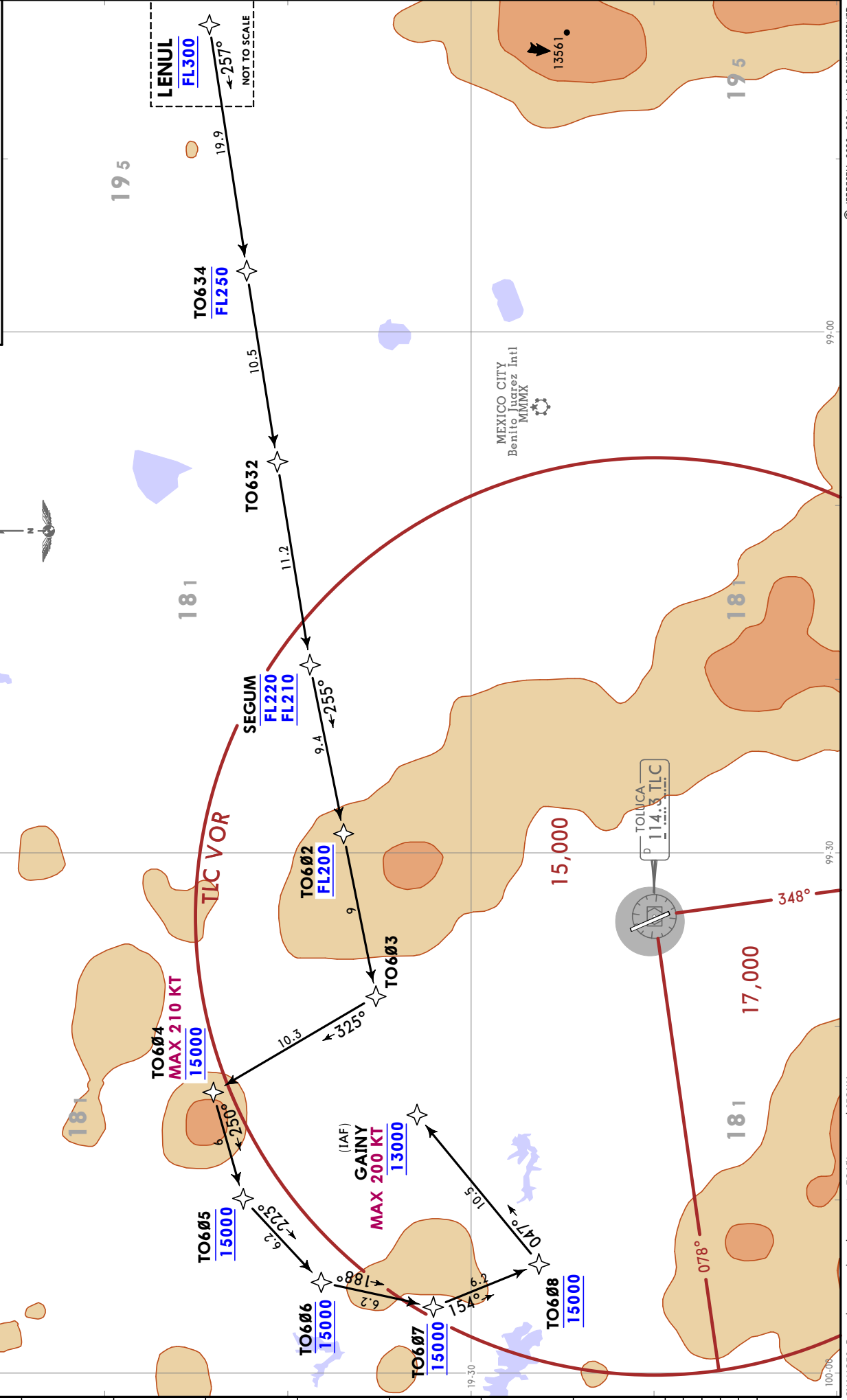
ATIS 127.8	Apt Elev 8466
Alt Set: IN (MB on request) Trans level: FL195	
RNAV 1 GNSS required	
RADAR required.	
LENUL 3A (LENUL3A) [LENUL3A] RNAV ARRIVAL (RWY 15)	

MMTO/TLC
LIC ADOLFO LOPEZ MATEOS INTL

**LENUL 3A (LENUL3A) [LENUL3A]
RNAV ARRIVAL
(RWY 15)**

CONTOUR INTERVALS

14000
12000
10000

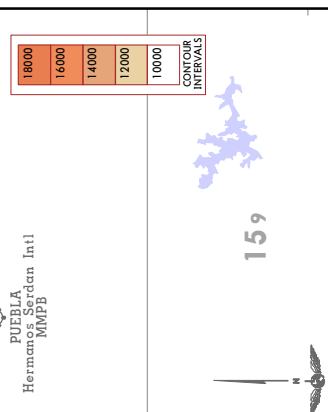


JEPPESEN **TOLUCA, MEXICO**
MMTO/TLC
LIC ADOLFO LOPEZ MATEOS INTL (10-3)
ICAO: MMTO
ETA TO AP: RNAV SID

MEXICO Approach (DP) **129.1**
 Apt Elev **8466**
 Trans alt: **18500**
 RNAV 1 **GNS** required
 RADAR required.

OMPER 3A (OMPERSA) [OMPE3A]
OVAGO 3C (OVAGO3C) [OVAG3C]
PURAL 3A (PURAL3A) [PURA3A]
SEBON 3C (SEBON3C) [SEBO3C]
TEVOS 2C (TEVOS2C) [TEVO2C]
ULEBA 3C (ULEBA3C) [ULEB3C]
RNAV DEPARTURES
(RWY 15)

PURAL
FL290
195



PUEBLA
 Hermanos Serdan Intl
 MPMFB

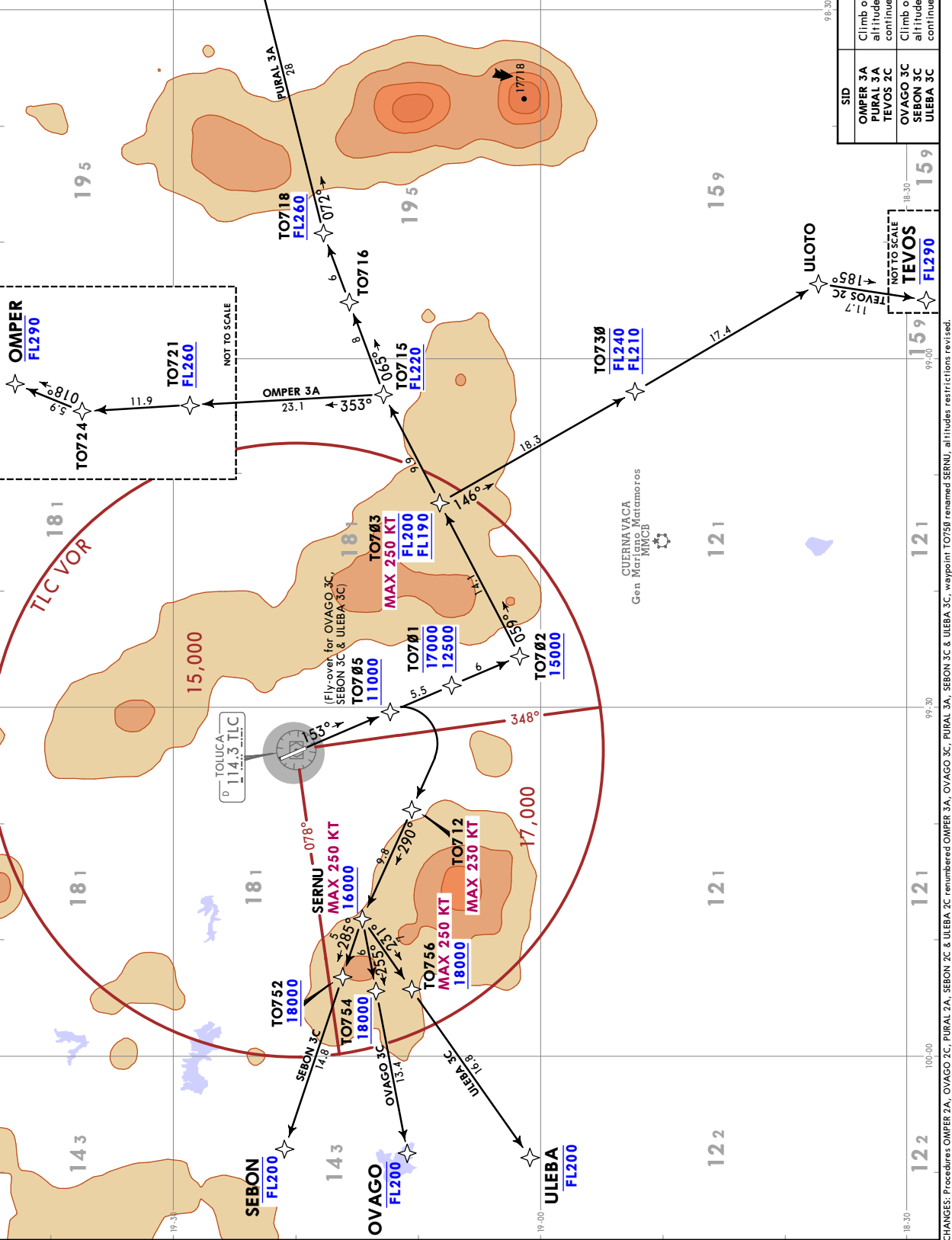
159
ULOTO

These SIDs require minimum climb gradients of:
 OMPER 3A, PURAL 3A, TEVOS 2C: 360 FT/NM until crossing 13000.
 OVAGO 3C, SEBON 3C, ULEBA 3C: 340 FT/NM until crossing 10000.

Ground speed-KT	75	100	150	200	250	300
340 FT/NM	425	567	850	1133	1417	1700
360 FT/NM	450	600	900	1200	1500	1800

INITIAL CLIMB

SID Climb on course 153° to TO705, continue to the waypoints, altitudes and tracks shown to OMPER, PURAL or TEVOS and continue on the assigned route or according to ATC instructions.
 PURAL 3A
 OVAGO 3C Climb on course 153° to TO705, continue to the waypoints, altitudes and tracks shown to OVAGO, SEBON or ULEBA and continue on the assigned route or according to ATC instructions.
 SEBON 3C
 ULEBA 3C



CHANGES: Procedures OMPER 2A, OVAGO 2C, PURAL 2A, SEBON 2C & ULEBA 2C, renamed OMPER 3A, OVAGO 3C, PURAL 3A, SEBON 3C & ULEBA 3C, waypoint TO758 renamed SERNU, altitudes restricted revised.

© JEPPESEN, 2020, 2024. ALL RIGHTS RESERVED.

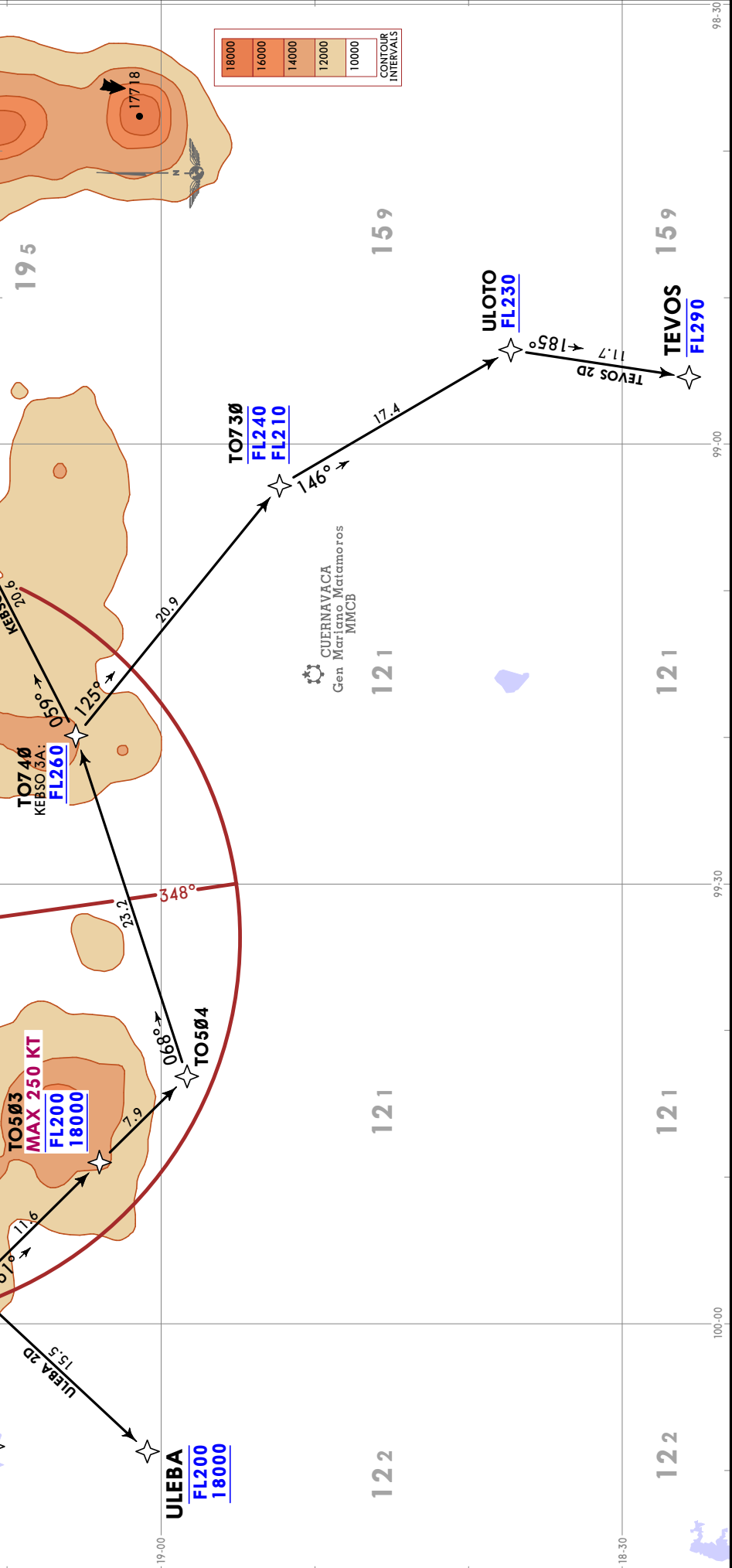
JEPPESEN
12 APR 24 (10-3A) Eff 18 Apr
MMTO/TLC
LTC ADOLFO LOPEZ MATEOS INTL
TOLUCA, MEXICO
RNAV SID

MEXICO Approach (DEP)
129.1
Trans alt: 18500
RNAV 1 GNSS required
RADAR required.
Apt Elev
8466

KEBSO 3A (KEBSO3A) [KEBS3A]
OVAGO 2D (OVAGO2D) [OVAG2D]
SEBON 2D (SEBON2D) [SEBO2D]
TEVOS 2D (TEVOS2D) [TEVO2D]
ULEBA 2D (ULEBA2D) [ULEB2D]
RNAV DEPARTURES
(RWY 33)

These SIDs require a minimum climb gradient of 360 FT/NM until crossing 10000.
Gnd speed-KT 75 100 150 200 250 300
360 FT/NM 450 600 900 1200 1500 1800

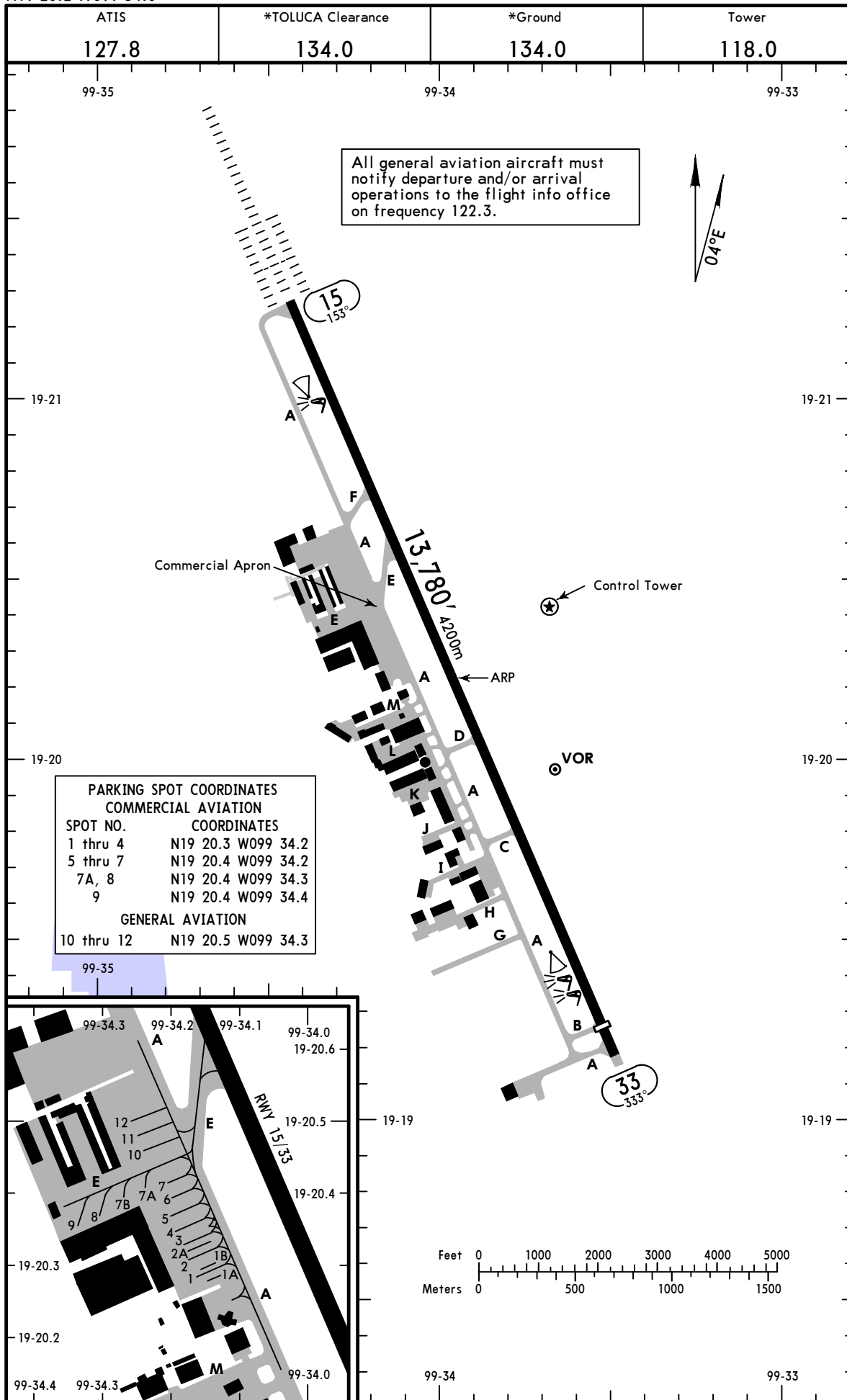
INITIAL CLIMB
Climb on course 333° to TO5Ø5, continue to the waypoints, altitudes and tracks shown to KEBSO, OVAGO, SEBON, TEVOS or ULEBA and continue on the assigned route or according to ATC instructions.



MMTO/TLC
 Apt Elev **8466'**
 N19 20.2 W099 34.0

JEPPesen
 15 APR 22 **(10-9)**

TOLUCA, MEXICO
 LIC ADOLFO LOPEZ MATEOS INTL



MMTO/TLC



TOLUCA, MEXICO

15 APR 22

10-9A

LIC ADOLFO LOPEZ MATEOS INTL

GENERAL

CAUTION: Birds in vicinity of airport.
Turbojet aircraft use minimum power to avoid damage to buildings.

ADDITIONAL RUNWAY INFORMATION

RWY		USABLE LENGTHS		TAKE-OFF	WIDTH
		LANDING BEYOND			
		Threshold	Glide Slope		
15	HIRL CL ALSF II TDZ PAPI-L (angle 3.0°) RVR		12,729' 3880m		148'
33	HIRL CL PAPI-L (angle 3.0°) RVR	13,255' 4040m			45m

TAKE-OFF

All Rwys

SCHEDULED AIR CARRIER ONLY						Other
1	HIRL & CL	1	HIRL or CL or RCLM	If there are differences between the values reported by ATS and the quantity of lights observed by the pilot, the count of 7 lights by the pilot will be valid for CAT I or 14 lights for CAT II/IIIA. If the aircraft on take-off does not have the approval from the DGAC for ILS CAT II/IIIA, then an alternate airport is required.		
2 Eng	TDZ 7 RVR			2 1/4		1 & 2 Eng 500-1
3 & 4 Eng	Mid RVR 7 Rollout RVR 7		RVR 14			3 & 4 Eng 500-1/2

- 1 For take-offs with RVR values of 700' (213m) or higher, it is at least required that the sensors on TDZ be operational and on MID point. In case the TDZ is missing, the MID and Rollout points will be required.
- 2 Air Operators should count on the approval of the DGAC to conduct take-off operations with Rwy visibilities of 1/8SM and up to 1/4SM.

DEPARTURE PROCEDURE

For departure procedure and MCAs see SIDs.

FOR FILING AS ALTERNATE

	ILS Z Rwy 15 ILS DME Y Rwy 15	LOC Rwy 15 LOC Y Rwy 15 ILS DME X Rwy 15 CAT II & IIIA RNP Rwy 15	RNP Rwy 33 VOR DME Rwy 15 VOR DME Rwy 33
--	----------------------------------	--	--

A	600-2	1300-3
B		
C		
D		

MMTO/TLC

JEPPESEN

SMGCS

LIC ADOLFO LOPEZ MATEOS INTL

25 DEC 20

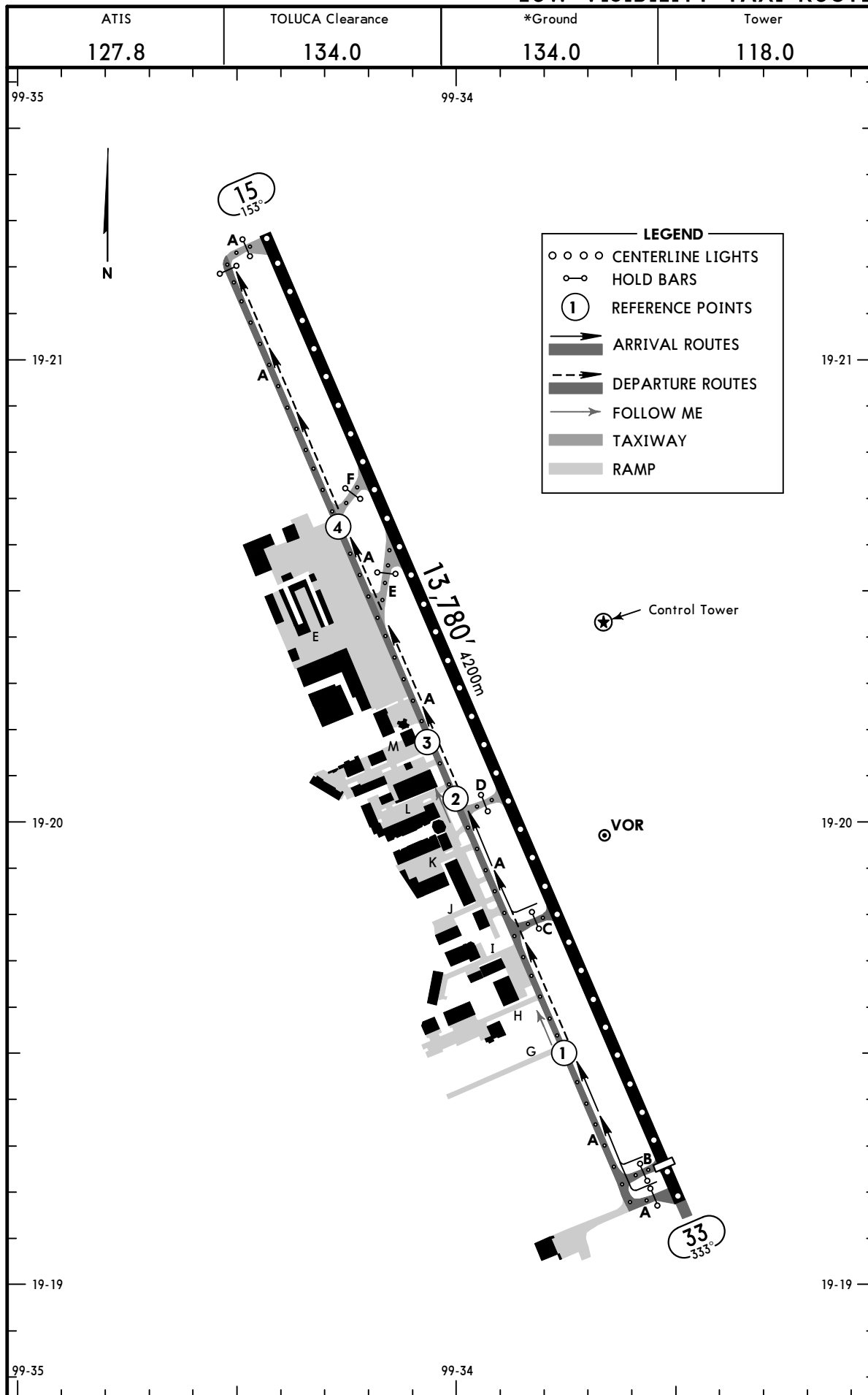
10-9B

TOLUCA, MEXICO

RVR 1200 \uparrow 600

Eff 31 Dec

LOW VISIBILITY TAXI ROUTES



MMTO/TLC

JEPPESEN

TOLUCA, MEXICO

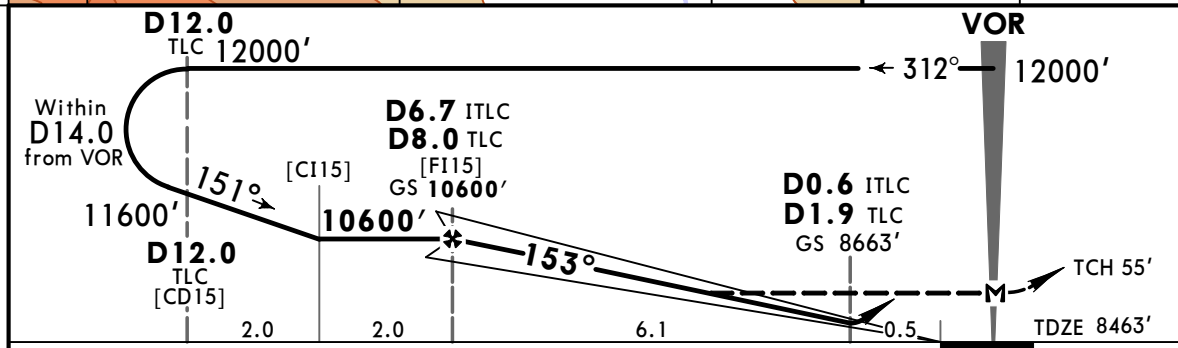
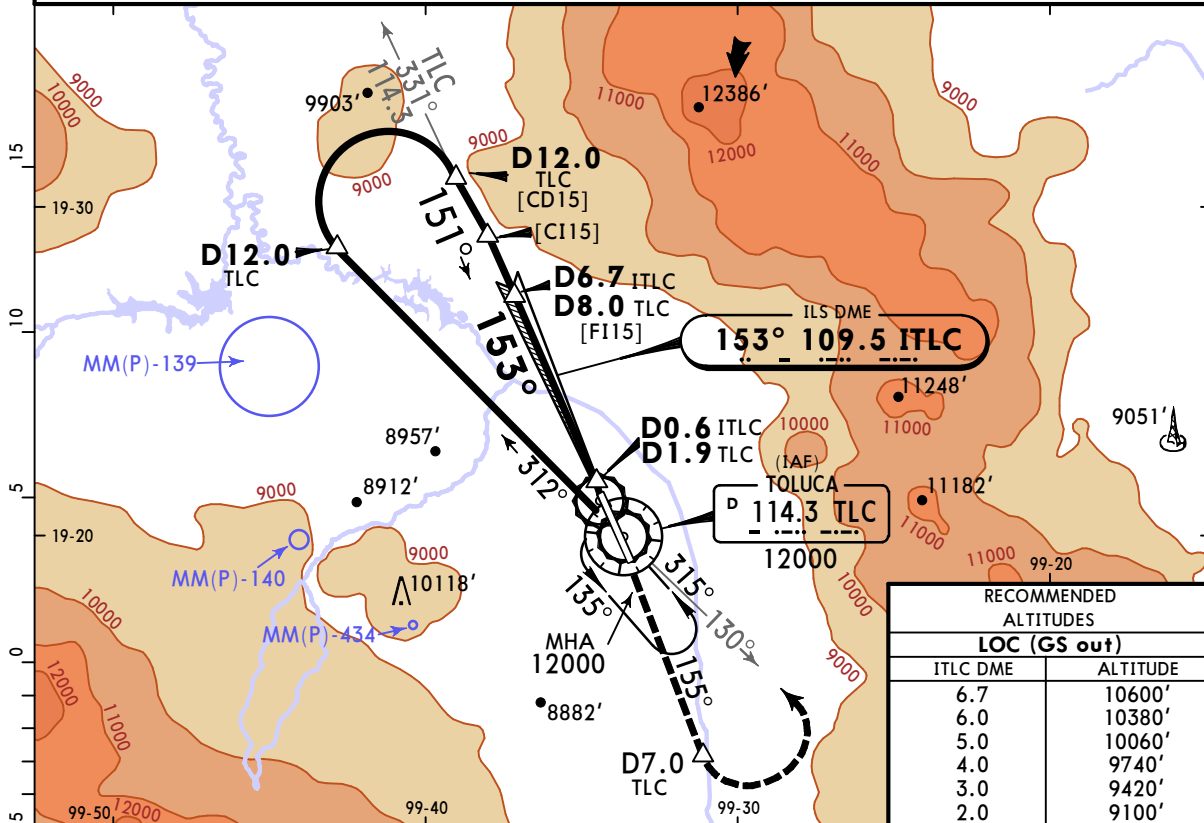
LIC ADOLFO LOPEZ MATEOS INTL

Eff 11 Jul

(11-1)

ILS or LOC Z Rwy 15

ATIS 127.8		TOLUCA Approach 119.35		TOLUCA Tower 118.0		*Ground 134.0
LOC ITLC 109.5	Final Apch Crs 153°	D6.7 ITLC D8.0 TLC 10600'(2137')	ILS DA(H) 8663'(200')	Apt Elev 8466' TDZE 8463'		
MISSED APCH: Climb on Rwy heading and proceed on TLC VOR R-155 to D7.0 TLC, turn LEFT within 10 NM inbound to TLC VOR on TLC VOR R-130 at the minimum holding altitude.						
Alt Set: IN (MB on req)		Trans level: FL195		Trans alt: 18500'		MSA TLC VOR
VOR/DME required.						



Gnd speed-Kts	70	90	100	120	140	160	ALSIF-II	PAPI	↑	Rwy on hdg on	TLC	D7.0
GS	3.00°	372	478	531	637	849					R-155	TLC
MAP at VOR												

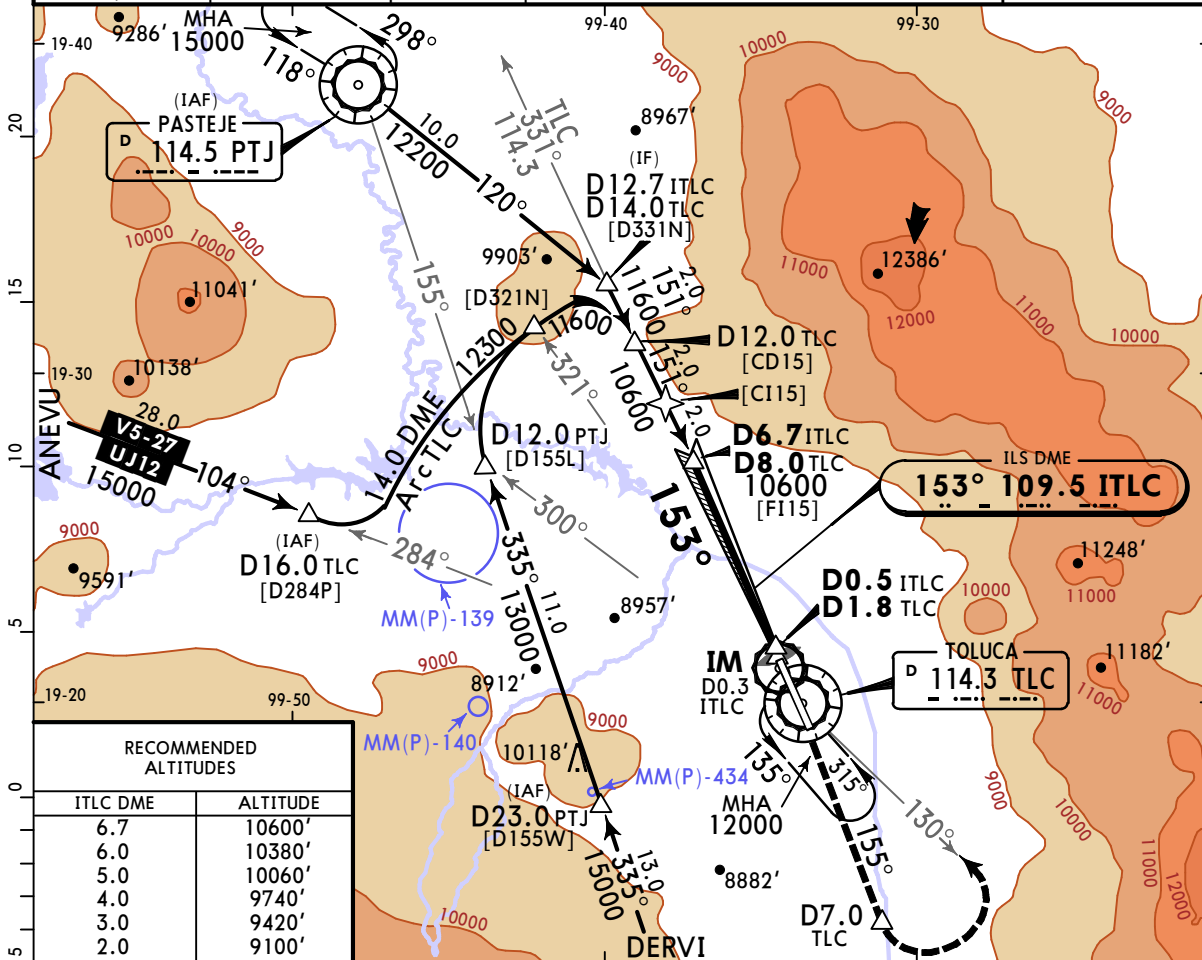
STRAIGHT-IN LANDING RWY 15				CIRCLE-TO-LAND	
ILS		LOC (GS out)		Max Kts	MDA(H)
FULL	ALS out	FULL	ALS out		
DA(H) 8663'(200')		MDA(H) 8860'(397')		90	9000'(534') - 1
A				120	9000'(534') - 1
B		RVR 40 or 3/4	RVR 50 or 1	140	9000'(534') - 1 1/2
C	RVR 24 or 1/2	RVR 40 or 3/4		165	9020'(554') - 2
D		RVR 50 or 1	RVR 60 or 1/4		

MMTO/TLC
LIC ADOLFO
LOPEZ MATEOS INTL

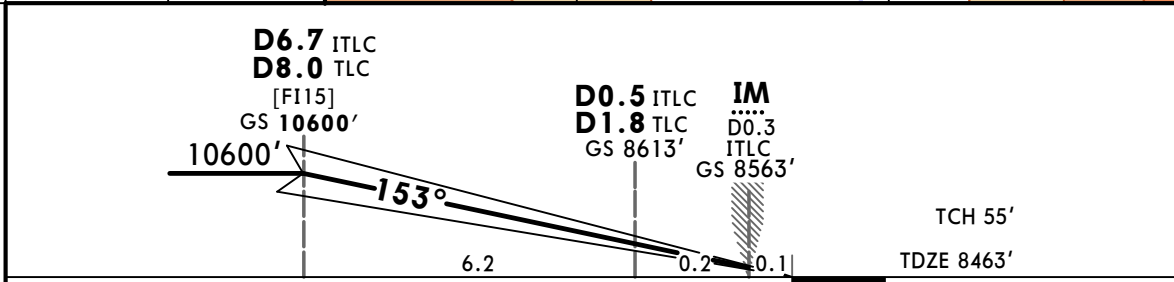
JEPPESSEN
 5 JUL 24 **(11-2) Eff 11 Jul**

TOLUCA, MEXICO
ILS Y Rwy 15
CAT II & IIIA

ATIS 127.8		TOLUCA Approach 119.35		TOLUCA Tower 118.0		*Ground 134.0
LOC ITLC 109.5	Final Apch Crs 153°	D6.7 ITLC D8.0 TLC 10600' (2137')	CAT IIIA Refer to Minimums	CAT II ILS RA 100' DA(H) 8563'(100')	Apt Elev 8466' TDZE 8463'	
MISSED APCH: Climb on rwy heading and proceed on TLC VOR R-155 to D7.0 TLC, turn LEFT within 10 NM inbound to TLC VOR on TLC VOR R-130 at the minimum holding altitude.						
Alt Set: IN (MB on req)		Trans level: FL195		Trans alt: 18500'		MSA TLC VOR
1. VOR/DME required. 2. These operations require the DGAC certification.						



RECOMMENDED ALTITUDES	
ITLC DME	ALTITUDE
6.7	10600'
6.0	10380'
5.0	10060'
4.0	9740'
3.0	9420'
2.0	9100'



Gnd speed-Kts	70	90	100	120	140	160	ALSF-II	PAPI	Rwy on hdg	TLC on	114.3	D7.0 TLC
GS	3.00°	372	478	531	637	743				849	R-155	

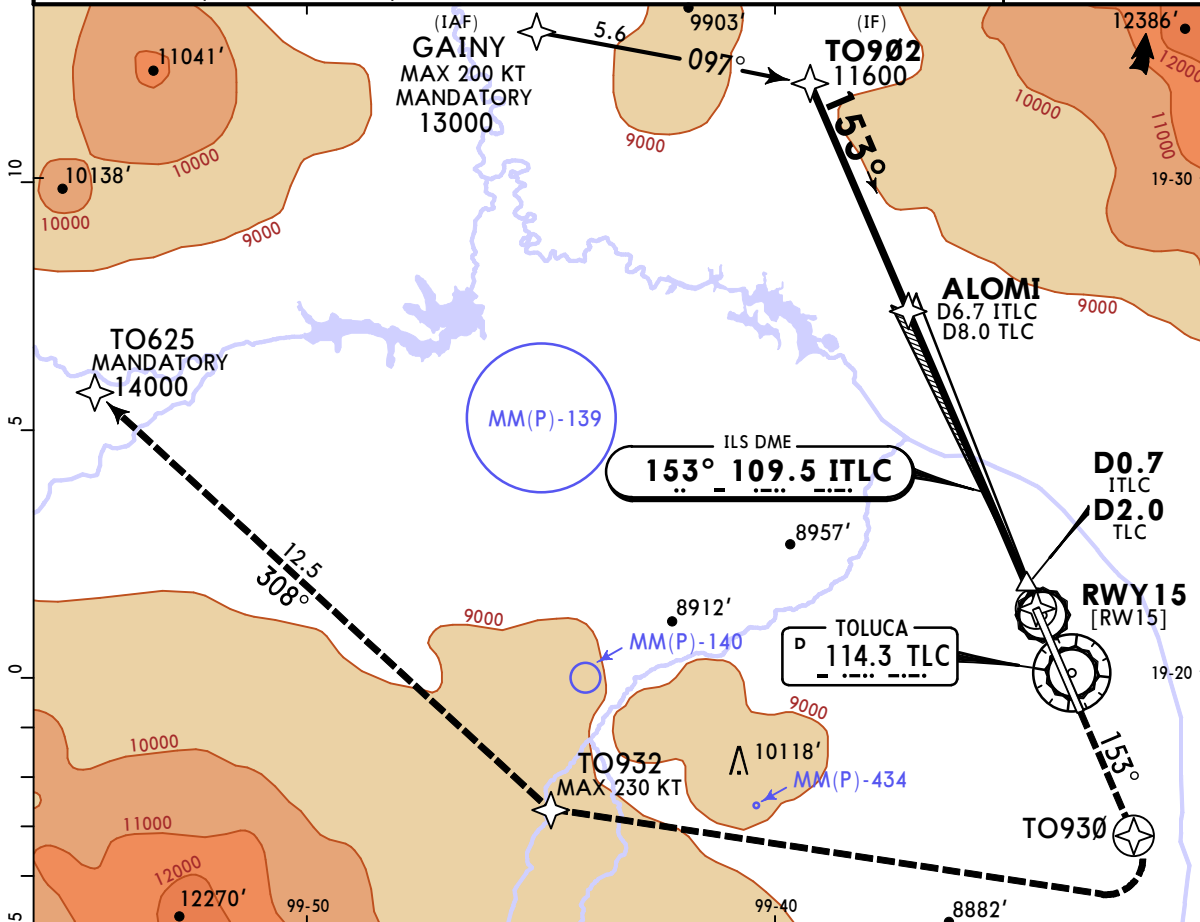
STRAIGHT-IN LANDING RWY 15		
CAT IIIA ILS	CAT II ILS	
	RA 100' DA(H) 8563' (100')	RA 150' DA(H) 8613' (150')
RVR 7	RVR 12	RVR 16

Aircraft with "FAIL PASSIVE" DA(H) 8513' (50').
 CHANGES: Procedure title, re-index, note, recommended altitudes. © JEPPESSEN, 2007, 2024. ALL RIGHTS RESERVED.

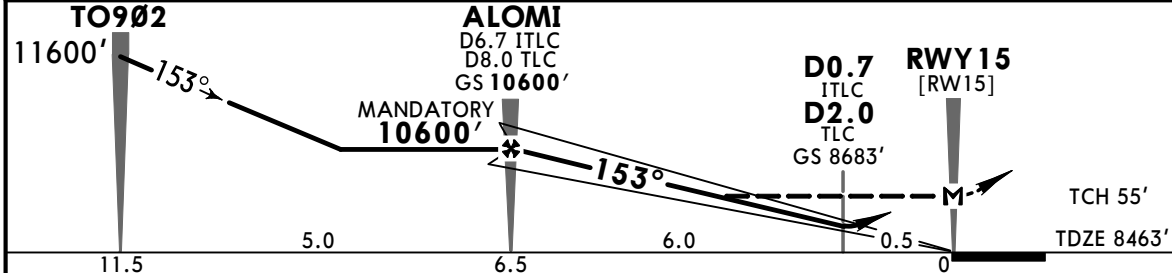
MMTO/TLC

2 AUG 24 **JEPPESEN** TOLUCA, MEXICO
 LIC ADOLFO LOPEZ MATEOS INTL **Eff 8 Aug** (11-3) ILS X or LOC X Rwy 15

ATIS 127.8		TOLUCA Approach 119.35		TOLUCA Tower 118.0		*Ground 134.0
LOC ITLC 109.5	Final Apch Crs 153°	ALOMI MANDATORY 10600' (2137')	ILS DA(H) 8683' (220')	Apt Elev 8466'		
MISSED APCH: Climb on track 153° to TO930 and proceed on the missed approach track to TO625 and continue according to ATC instructions.						
Alt Set: IN (MB on req)		Trans level: FL195		Trans alt: 18500'		
RNAV 1 required for transition and missed approach 1. VOR/DME required. 2. GNSS required.						



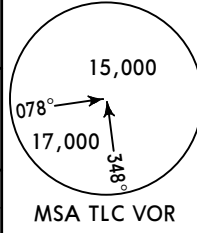
LOC (GS out)	ITLC DME	6.7	6.0	5.0	4.0	3.0	2.0
	ALTITUDE	10600'	10380'	10060'	9740'	9420'	9100'

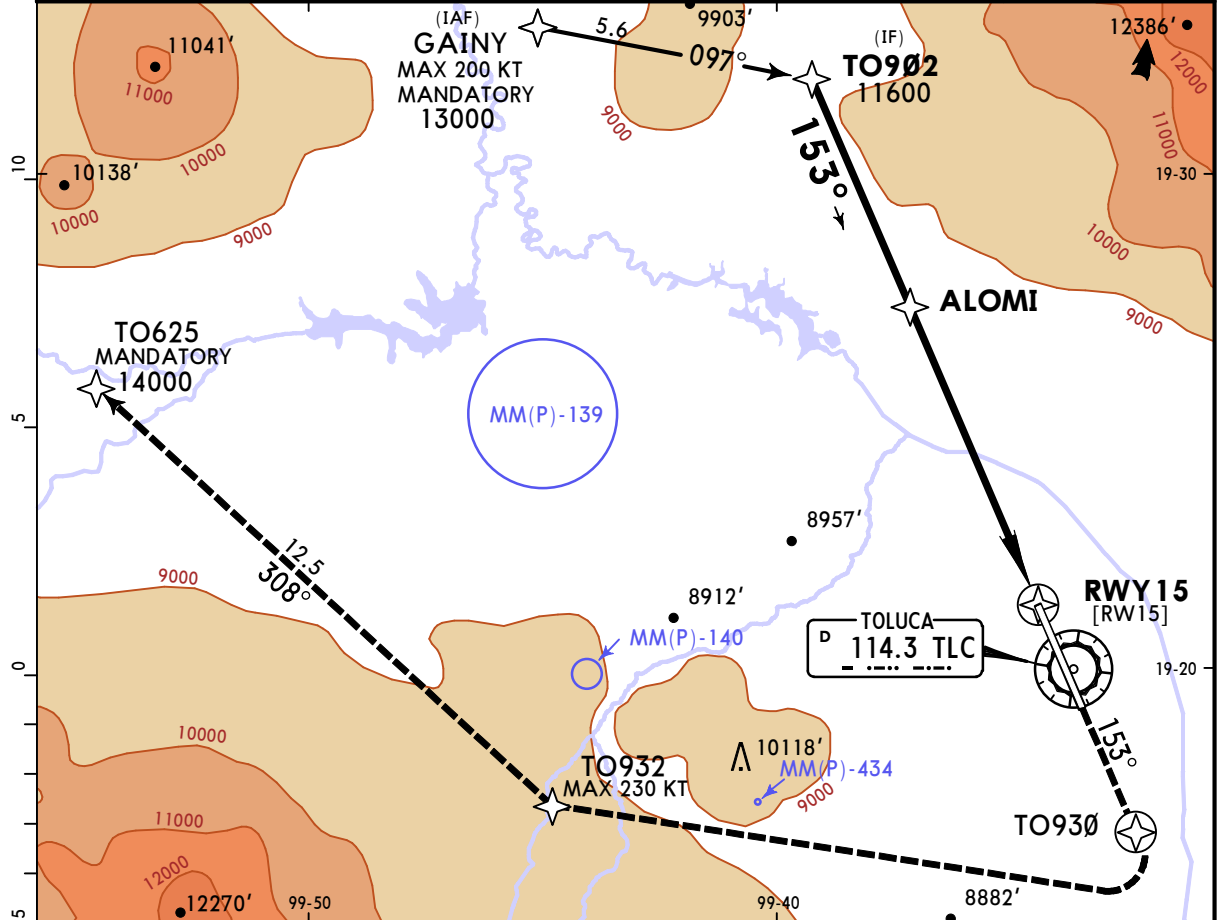


Gnd speed-Kts	70	90	100	120	140	160	ALS F-II	PAPI	↑ on 153° TO930
GS	3.00°	372	478	531	637	743			
MAP at RWY15									
ALOMI to MAP	6.5	5:34	4:20	3:54	3:15	2:47	2:26		

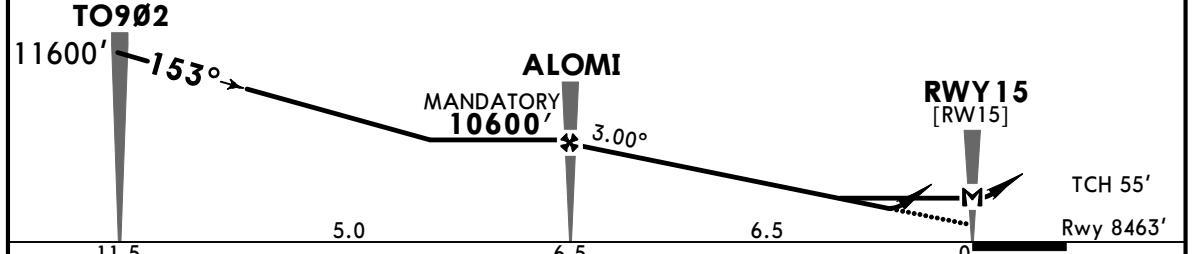
STRAIGHT-IN LANDING RWY 15				CIRCLE-TO-LAND	
ILS DA(H) 8683' (220')		LOC (GS out) MDA(H) 8960' (497')		Max Kts	MDA(H)
FULL	ALS out	ALS out	ALS out	90	9040'(574') - 1
A		1/2	1	120	9040'(574') - 1 1/2
B	1/2	3/4		140	9040'(574') - 1 1/2
C			1	165	9060'(594') - 2
D			1 3/8		

MMTO/TLC **JEPPESEN** **TOLUCA, MEXICO**
LIC ADOLFO LOPEZ MATEOS INTL 17 FEB 23 **(12-1)** **Eff 23 Feb** **RNP Rwy 15**

ATIS 127.8		TOLUCA Approach 119.35		TOLUCA Tower 118.0		*Ground 134.0	
RNAV	Final Apch Crs 153°	ALOMI MANDATORY 10600' (2137')	LNAV/VNAV DA(H) 8860' (397')	Apt Elev 8466' Rwy 8463'			
MISSED APCH: Climb on track 153° to TO930 and proceed on the missed approach track to TO625 and continue according to ATC instructions.							
RNP Apch	Alt Set: IN (MB on req)		Trans level: FL195		Trans alt: 18500'		
GNSS required.							



DIST to THR	6.0	5.0	4.0	3.0	2.0
ALTITUDE	10430'	10110'	9790'	9470'	9160'

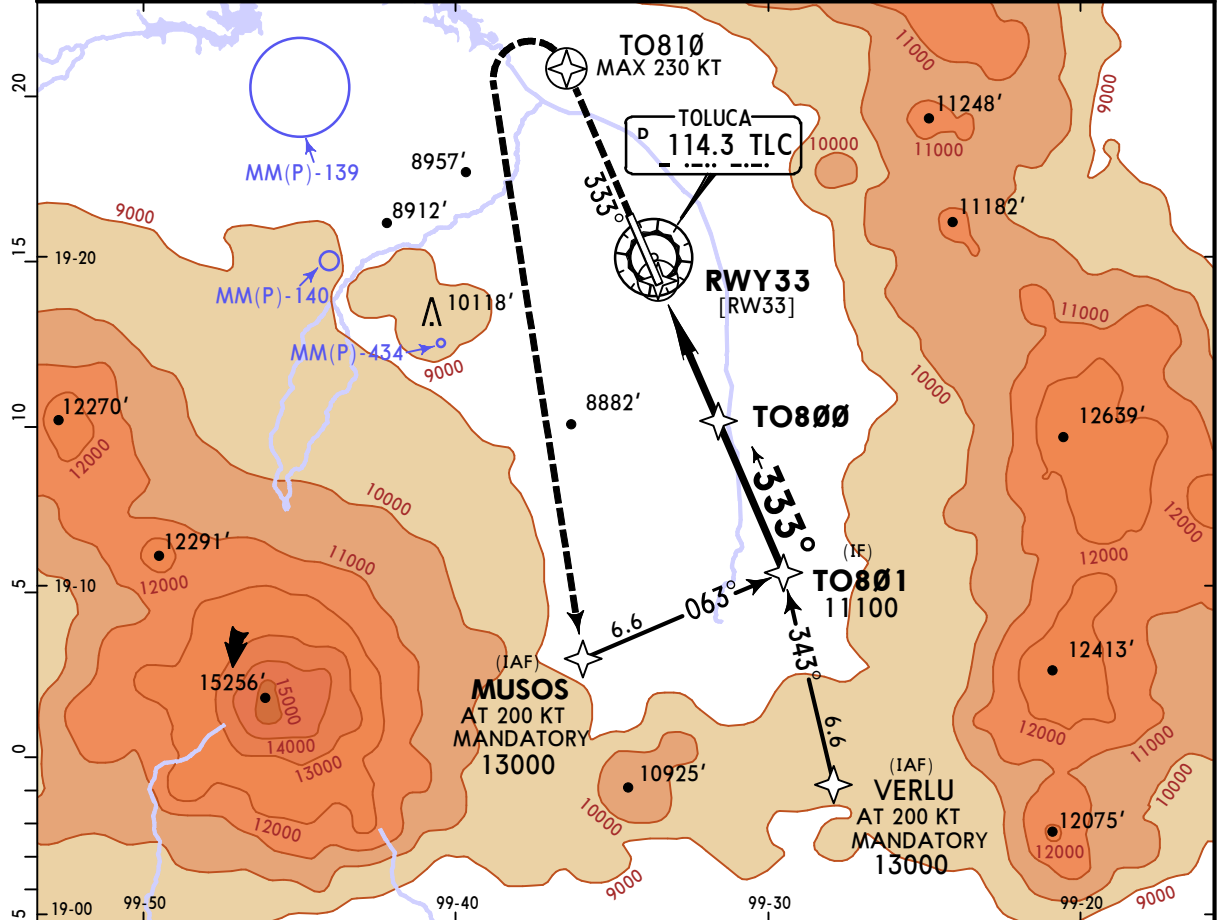


Gnd speed-Kts	70	90	100	120	140	160	ALSF-II	PAPI	↑ on 153° TO930
Glide Path Angle	3.00°	372	478	531	637	743			
MAP at RWY15									
ALOMI to MAP	6.5	5:34	4:20	3:54	3:15	2:47	2:26		

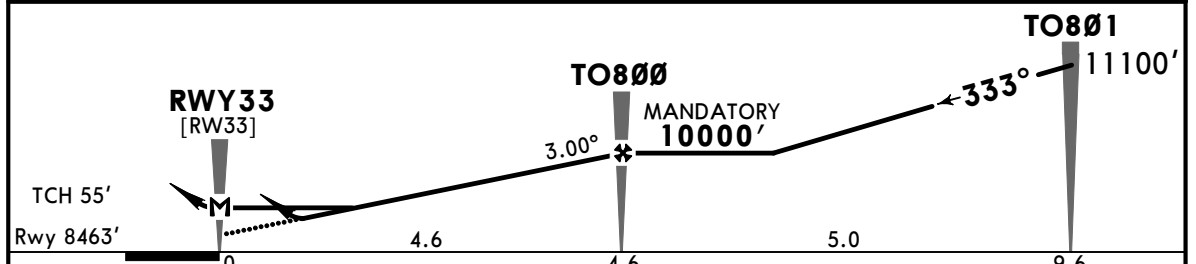
STRAIGHT-IN LANDING RWY15				CIRCLE-TO-LAND	
LNAV/VNAV DA(H) 8860' (397')		LNAV MDA(H) 8920' (457')		Max Kts	MDA(H)
ALS out		ALS out		90	9040' (574') - 1
A		1		120	
B	1/8			140	9040' (574') - 1 1/2
C		1 3/8		165	9060' (594') - 2
D					

MMTO/TLC **JEPPESEN** **TOLUCA, MEXICO**
LIC ADOLFO LOPEZ MATEOS INTL 17 FEB 23 **(12-2)** **Eff 23 Feb** **RNP Rwy 33**

ATIS 127.8		TOLUCA Approach 119.35		TOLUCA Tower 118.0		*Ground 134.0	
RNAV	Final Apch Crs 333°	TO800 MANDATORY 10000' (1537')	LNAV/VNAV DA(H) 8860' (397')		Apt Elev 8466' Rwy 8463'		
MISSED APCH: Climb on track 333° to TO810 and proceed on missed approach track to MUSOS and continue according to ATC instructions.							
RNP Apch	Alt Set: IN (MB on req)		Trans level: FL195		Trans alt: 18500'		
GNSS required.							MSA TLC VOR



DIST to THR	2.0	3.0	4.0
ALTITUDE	9160'	9470'	9790'

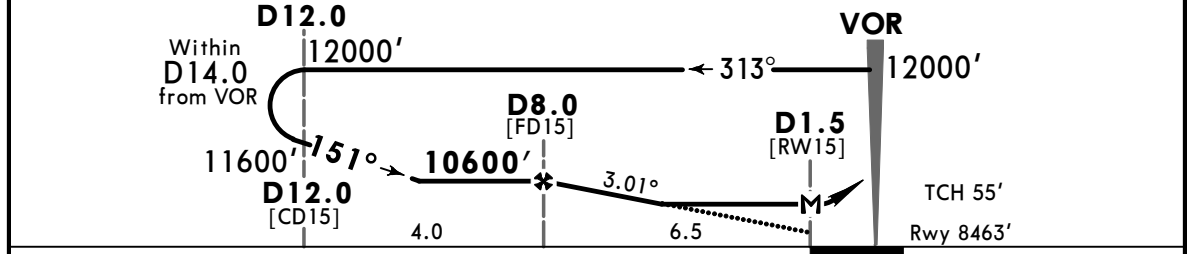
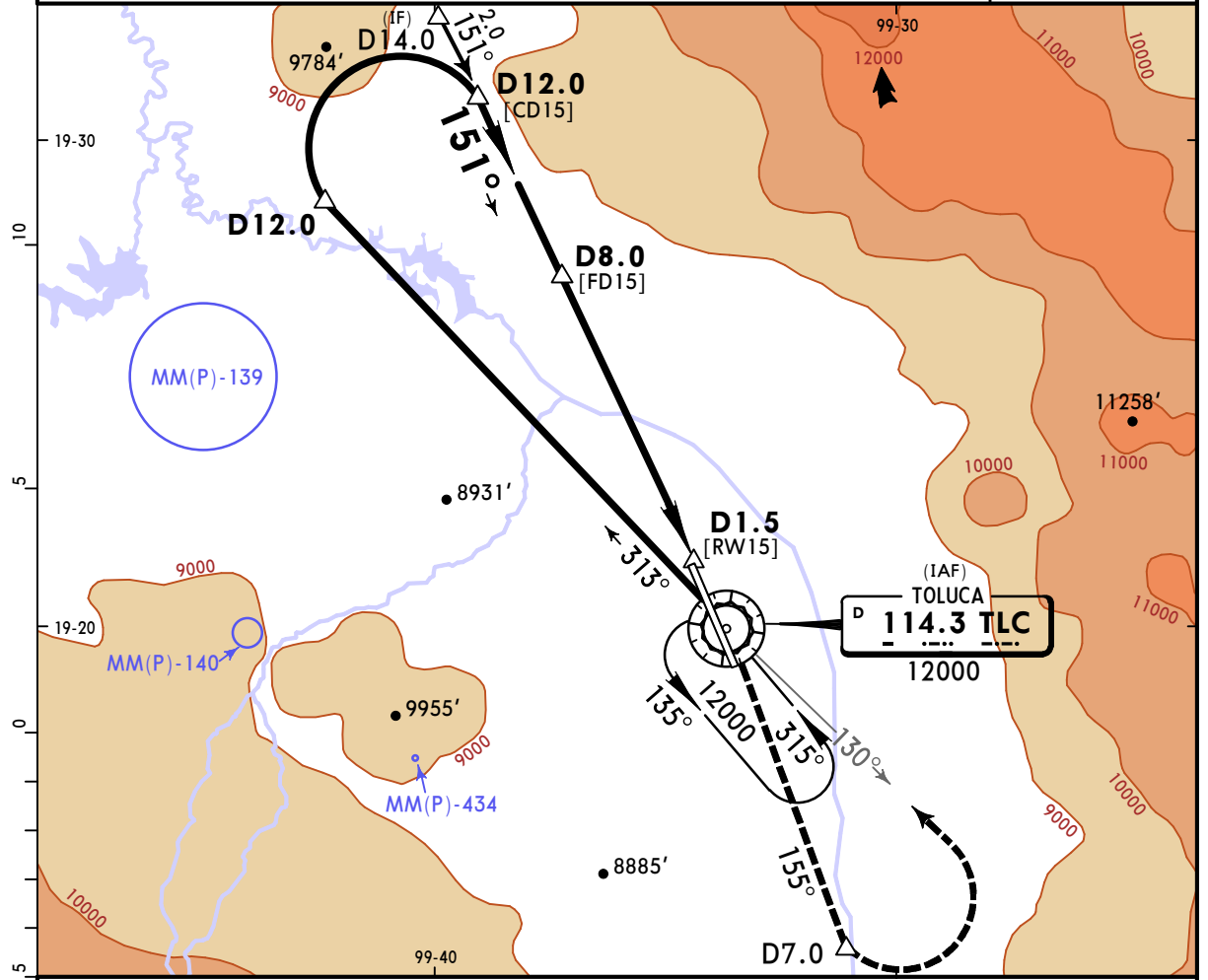


Gnd speed-Kts	70	90	100	120	140	160	PAPI-L	↑ on 333° TO810	
Glide Path Angle	3.00°	372	478	531	637	743			849
MAP at RWY33									
TO800 to MAP	4.6	3:57	3:04	2:46	2:18	1:58			1:43

STRAIGHT-IN LANDING RWY33				CIRCLE-TO-LAND			
LNAV/VNAV		LNAV		Max Kts		MDA(H)	
DA(H) 8860' (397')		MDA(H) 8900' (437')		90		9040' (574') - 1	
1 1/8		1		120		9040' (574') - 1 1/2	
1 1/8		1 1/4		140		9060' (594') - 2	
1 1/8		1 1/4		165		9060' (594') - 2	

MMTO/TLC **JEPPESEN** **TOLUCA, MEXICO**
LIC ADOLFO LOPEZ MATEOS INTL 5 JUL 24 **(13-1)** Eff 11 Jul **VOR Z Rwy 15**

ATIS 127.8		TOLUCA Approach 119.35		TOLUCA Tower 118.0		*Ground 134.0		
VOR TLC 114.3	Final Apch Crs 151°	D8.0 10600' (2137')	MDA(H) 8940' (477')	Apt Elev 8466' Rwy 8463'				
MISSED APCH: Climb via TLC VOR R-155 to D7.0, turn LEFT within 10 NM inbound to TLC VOR on TLC VOR R-130 at the minimum holding altitude.								
Alt Set: IN (MB on req)		Trans level: FL195		Trans alt: 18500'				
VOR/DME required.							MSA TLC VOR	



Gnd speed-Kts	70	90	100	120	140	160	ALSF-II	TLC
Descent Angle 3.01°	373	479	532	639	745	852	PAPI	via 114.3 R-155 D7.0
MAP at D1.5								

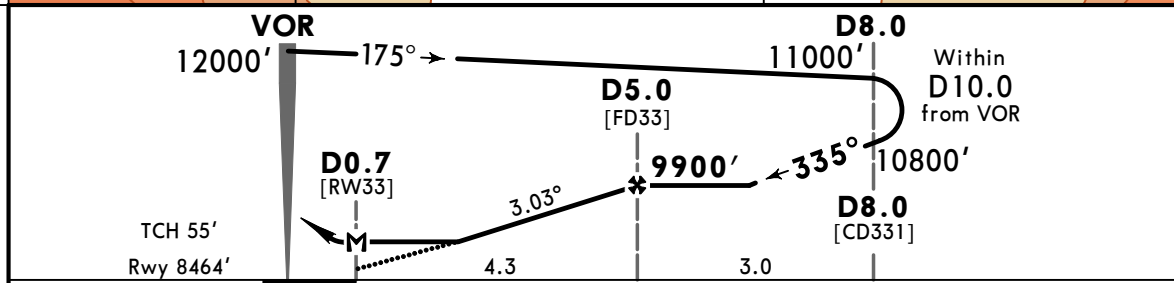
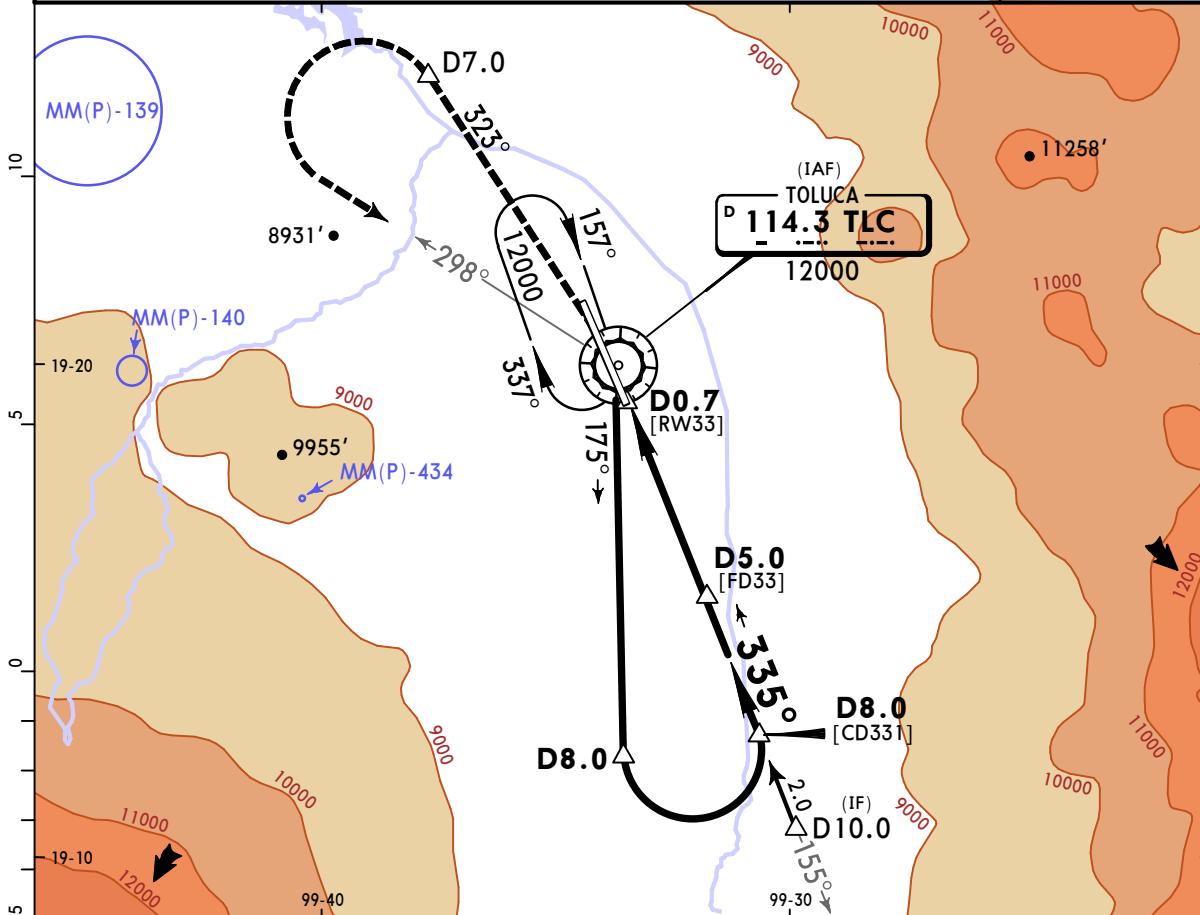
STRAIGHT-IN LANDING RWY 15				CIRCLE-TO-LAND			
MDA(H) 8940' (477')				MDA(H)			
ALS out				Max Kts			
A	1			90	9000' (534') -1		
B	1 1/4			120	9000' (534') -1 1/2		
C	1 1/2			140	9000' (534') -1 1/2		
D	1 1/2			165	9020' (554') -2		

MMTO/TLC
LIC ADOLFO LOPEZ MATEOS INTL

JEPPESEN
 5 JUL 24 (13-2) Eff 11 Jul

TOLUCA, MEXICO
VOR Rwy 33

ATIS 127.8		TOLUCA Approach 119.35		TOLUCA Tower 118.0		*Ground 134.0
VOR TLC 114.3	Final Apch Crs 335°	D5.0 9900' (1436')	MDA(H) 8920' (456')	Apt Elev 8466' Rwy 8464'		
MISSED APCH: Climb via TLC VOR R-323 to D7.0, turn LEFT within 10 NM inbound to TLC VOR on TLC VOR R-298 at the minimum holding altitude.						
Alt Set: IN (MB on req)		Trans level: FL195		Trans alt: 18500'		
VOR/DME required.						MSA TLC VOR



Gnd speed-Kts	70	90	100	120	140	160	PAPI-L		TLC via 114.3 R-323	D7.0
Descent Angle 3.03°	375	482	536	643	750	858				
MAP at D0.7										

STRAIGHT-IN LANDING RWY 33			CIRCLE-TO-LAND		
MDA(H) 8920' (456')			MDA(H)		
A	1		Max Kts	9000' (534') - 1	
B	1 1/4		120	9000' (534') - 1 1/2	
C	1 1/2		140	9020' (554') - 2	
D	1 1/2		165	9020' (554') - 2	

CHANGES: Procedure title, note.