

General Information

Location: VILLAHERMOSA MEX
ICAO/IATA: MMVA / VSA
Lat/Long: N17° 59.8', W092° 48.9'
Elevation: 46 ft

Airport Use: Public
Daylight Savings: Not Observed
UTC Conversion: +6:00 = UTC
Magnetic Variation: 2.0° E

Fuel Types: 100 Octane (LL), Jet A
Customs: Yes
Airport Type: IFR
Landing Fee: No
Control Tower: Yes
Jet Start Unit: No
LLWS Alert: No
Beacon: No

Sunrise: 1143 Z
Sunset: 0051 Z

Runway Information

Runway: 08
Length x Width: 7218 ft x 148 ft
Surface Type: concrete
TDZ-Elev: 27 ft
Lighting: Edge, ALS

Runway: 26
Length x Width: 7218 ft x 148 ft
Surface Type: concrete
TDZ-Elev: 43 ft
Lighting: Edge

Communication Information

Villahermosa Tower: 118.700
Villahermosa Approach: 120.900
Merida Control ACC: 128.300 RCO
Villahermosa Information: 122.300 AFIS

*VILLAHERMOSA Approach
120.9

SPEED RESTRICTIONS WITHIN MEXICO AIRSPACE

MAXIMUM IAS UNLESS OTHERWISE DEPICTED OR AUTHORIZED BY ATC

WITHIN MEXICO AIRSPACE

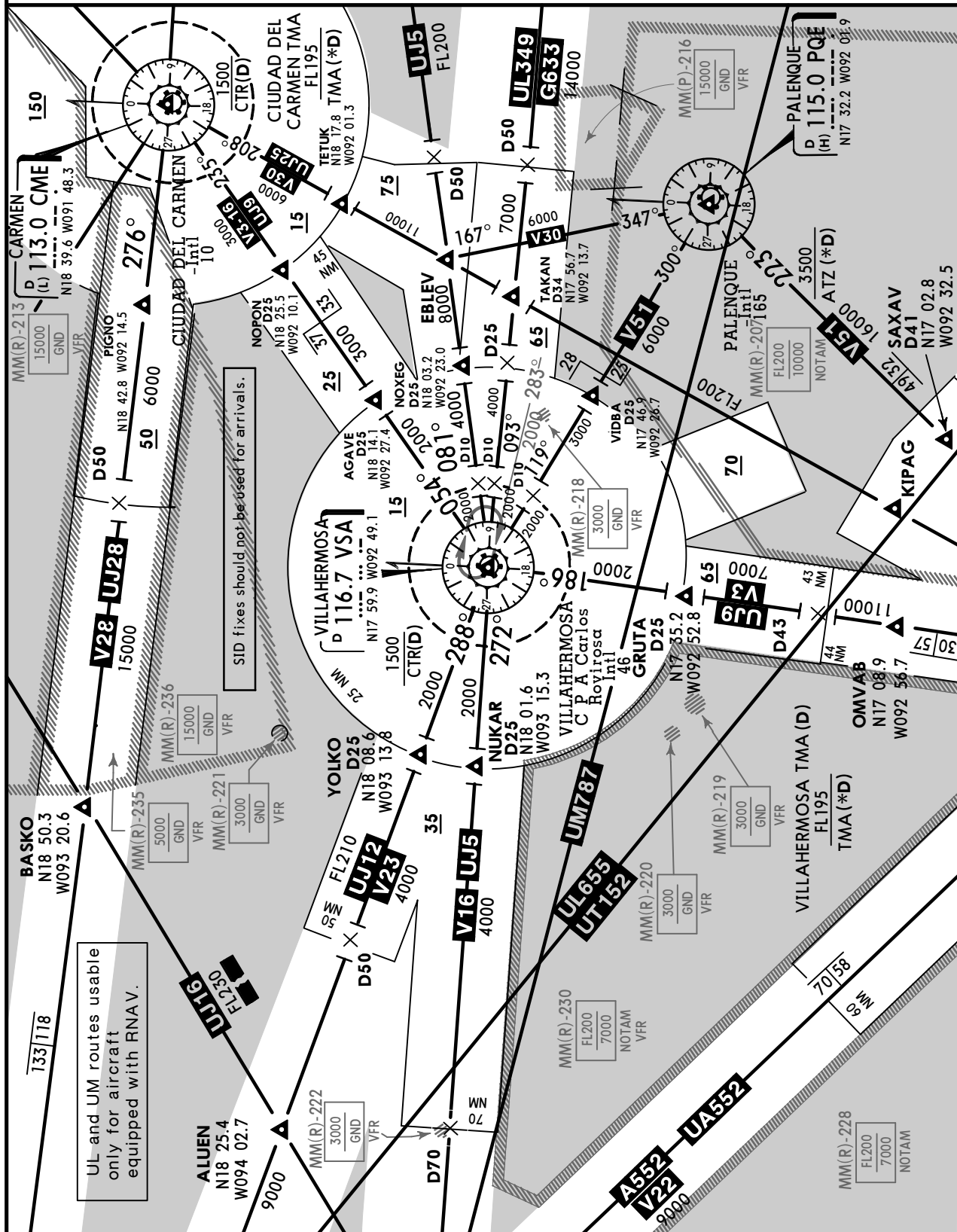
- Below 3000' AGL within 10 NM of any airport.....200 KTS
- Below 10,000' MSL within Mexico Airspace.....250 KTS
- Below 10,000' AGL within 30 NM of any airport.....250 KTS

WITHIN VILLAHERMOSA TMA

- At or below 3000' MSL within 10 NM of VSA VORDME.....200 KTS
- At or below 10,000' MSL within 30 NM of VSA VORDME.....250 KTS

WITHIN TUXTLA GUTIERREZ TMA

- At or below 4500' MSL within 10 NM of TGZ VORDME.....200 KTS
- At or below 11,500' MSL within 30 NM of TGZ VORDME.....250 KTS



VILLAHERMOSA, MEXICO
10 JUN 22 10-3 Eff 16 Jun
SID

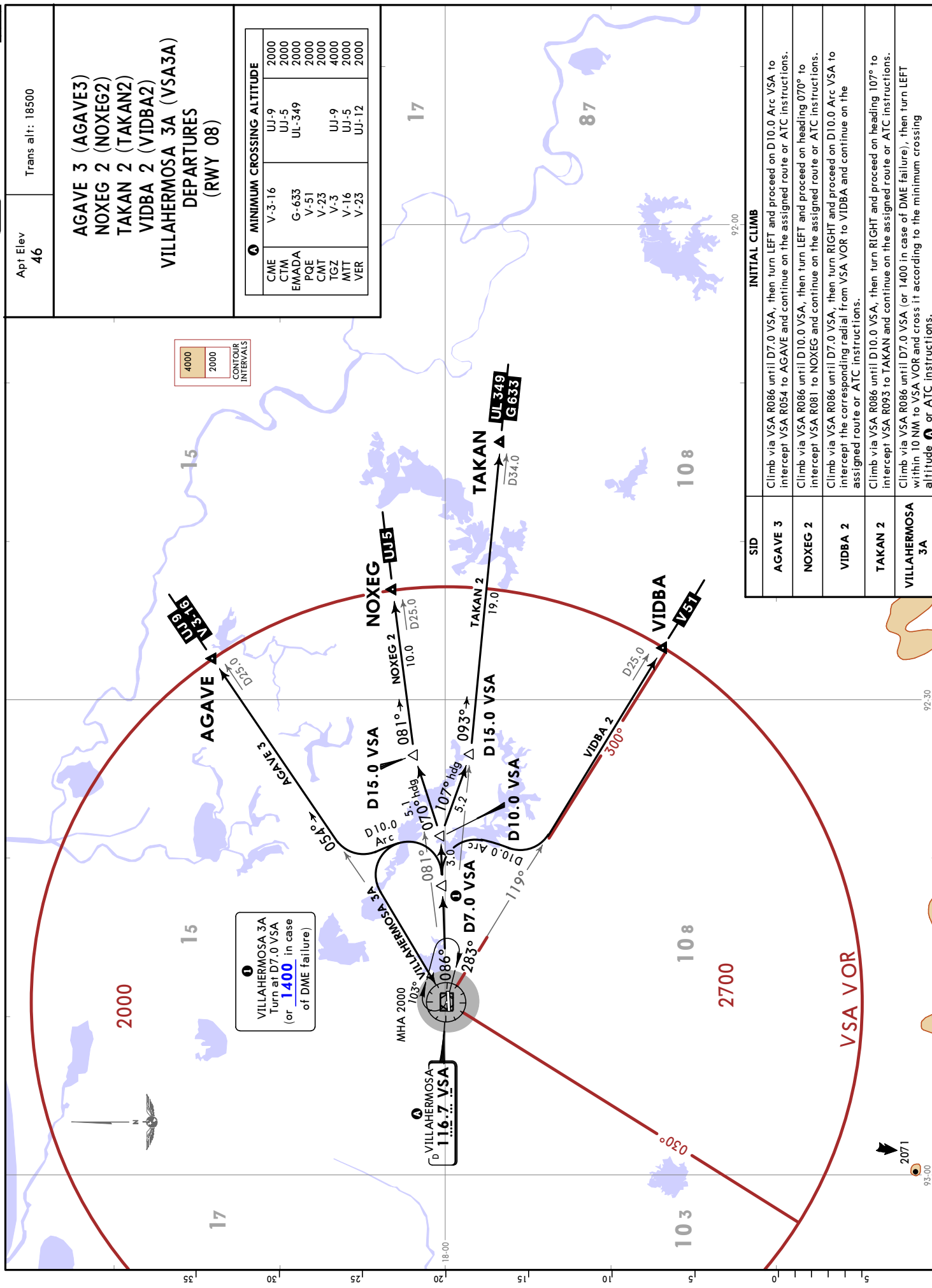
Apt Elev
46
 Trans alt: 18500

AGAVE 3 (AGAVE3)
NOXEG 2 (NOXEG2)
TAKAN 2 (TAKAN2)
VIDBA 2 (VIDBA2)
VILLAHERMOSA 3A (VSA3A)
DEPARTURES
(RWY 08)

MINIMUM CROSSING ALTITUDE	
CME	V-3-16
CTM	UJ-9
EMADA	UJ-5
PQE	G-633
CMT	V-51
TGZ	V-23
MTT	V-3
VER	V-16
	V-23
	UJ-9
	UJ-5
	UJ-12
	2000
	2000
	2000
	2000
	2000
	2000
	2000
	2000
	2000
	2000

4000
 2000
 CONTOUR INTERVALS

MMVA/VSA
 CPA CARLOS ROVIROSA INTL



VILLAHERMOSA 3A
 Turn at D7.0 VSA
 (or **1400** in case
 of DME failure)

SID	INITIAL CLIMB
AGAVE 3	Climb via VSA R086 until D7.0 VSA, then turn LEFT and proceed on D10.0 Arc VSA to intercept VSA R054 to AGAVE and continue on the assigned route or ATC instructions.
NOXEG 2	Climb via VSA R086 until D10.0 VSA, then turn LEFT and proceed on heading 070° to intercept VSA R081 to NOXEG and continue on the assigned route or ATC instructions.
VIDBA 2	Climb via VSA R086 until D7.0 VSA, then turn RIGHT and proceed on D10.0 Arc VSA to intercept the corresponding radial from VSA VOR to VIDBA and continue on the assigned route or ATC instructions.
TAKAN 2	Climb via VSA R086 until D10.0 VSA, then turn RIGHT and proceed on heading 107° to intercept VSA R093 to TAKAN and continue on the assigned route or ATC instructions.
VILLAHERMOSA 3A	Climb via VSA R086 until D7.0 VSA (or 1400 in case of DME failure), then turn LEFT within 10 NM to VSA VOR and cross it according to the minimum crossing altitude 4 or ATC instructions.

VILLAHERMOSA, MEXICO

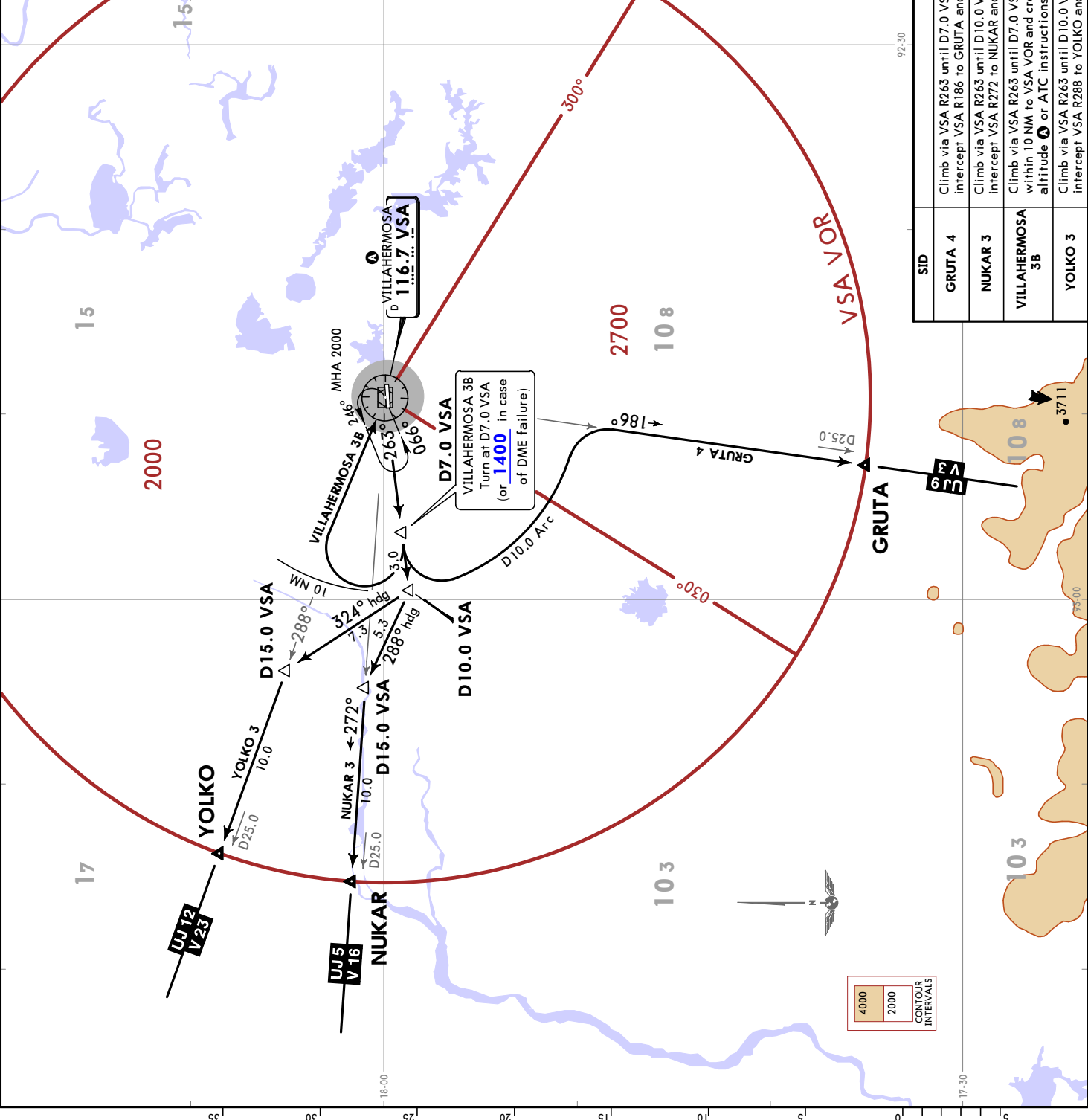
MMVA/VSA
CPA CARLOS ROVIROSA INTL

10 JUN 22 (10-3A) Eff. 16 Jun

JEPPESEN

SID

Apt Elev 46	Trans alt: 18500																																								
GRUTA 4 (GRUTA4) NUKAR 3 (NUKAR3) VILLAHERMOSA 3B (VSA3B) YOLKO 3 (YOLKO3) DEPARTURES (RWY 26)																																									
<table border="1"> <thead> <tr> <th colspan="2">MINIMUM CROSSING ALTITUDE</th> </tr> </thead> <tbody> <tr> <td>CME</td> <td>V-3-16</td> </tr> <tr> <td>CTM</td> <td>UJ-9</td> </tr> <tr> <td>EMADA</td> <td>UJ-5</td> </tr> <tr> <td>POE</td> <td>G-633</td> </tr> <tr> <td>CMT</td> <td>V-51</td> </tr> <tr> <td>TGZ</td> <td>V-23</td> </tr> <tr> <td>MTT</td> <td>V-3</td> </tr> <tr> <td>VER</td> <td>V-16</td> </tr> <tr> <td></td> <td>UJ-5</td> </tr> <tr> <td></td> <td>UJ-12</td> </tr> <tr> <td></td> <td>2000</td> </tr> <tr> <td></td> <td>2000</td> </tr> <tr> <td></td> <td>2000</td> </tr> <tr> <td></td> <td>2000</td> </tr> <tr> <td></td> <td>2000</td> </tr> <tr> <td></td> <td>2000</td> </tr> <tr> <td></td> <td>2000</td> </tr> <tr> <td></td> <td>2000</td> </tr> <tr> <td></td> <td>2000</td> </tr> </tbody> </table>		MINIMUM CROSSING ALTITUDE		CME	V-3-16	CTM	UJ-9	EMADA	UJ-5	POE	G-633	CMT	V-51	TGZ	V-23	MTT	V-3	VER	V-16		UJ-5		UJ-12		2000		2000		2000		2000		2000		2000		2000		2000		2000
MINIMUM CROSSING ALTITUDE																																									
CME	V-3-16																																								
CTM	UJ-9																																								
EMADA	UJ-5																																								
POE	G-633																																								
CMT	V-51																																								
TGZ	V-23																																								
MTT	V-3																																								
VER	V-16																																								
	UJ-5																																								
	UJ-12																																								
	2000																																								
	2000																																								
	2000																																								
	2000																																								
	2000																																								
	2000																																								
	2000																																								
	2000																																								
	2000																																								



MMVA/VSA

Apt Elev **46'**
N17 59.8 W092 48.9

JEPPESEN

5 AUG 22

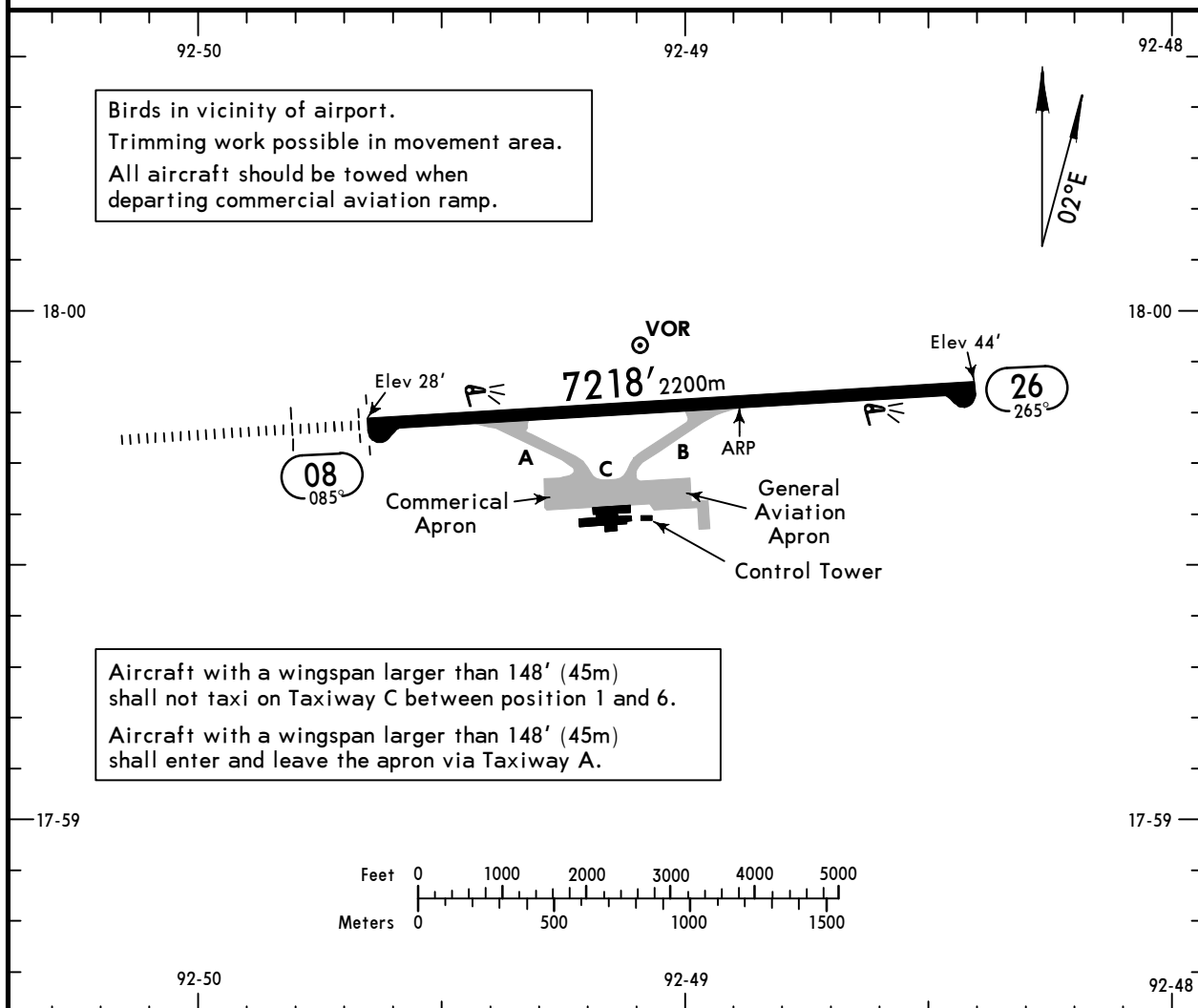
(10-9)

Eff 11 Aug

VILLAHERMOSA, MEXICO

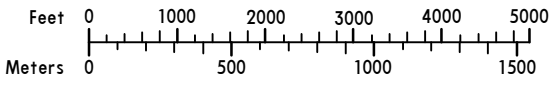
CPA CARLOS ROVIROSA INTL

*VILLAHERMOSA Tower **118.7**



Birds in vicinity of airport.
Trimming work possible in movement area.
All aircraft should be towed when departing commercial aviation ramp.

Aircraft with a wingspan larger than 148' (45m) shall not taxi on Taxiway C between position 1 and 6.
Aircraft with a wingspan larger than 148' (45m) shall enter and leave the apron via Taxiway A.



ADDITIONAL RUNWAY INFORMATION

RWY				USABLE LENGTHS		WIDTH
	HIRL (197')	ALSF-I	PAPI-L (angle 3.0°)	Threshold	Glide Slope	
08	HIRL (197')	ALSF-I	PAPI-L (angle 3.0°)		6138' 1871m	148'
26	HIRL (197')		PAPI-L (angle 3.0°)			45m

TAKE-OFF		FOR FILING AS ALTERNATE	
All Rwys		Precision	Non-Precision
1 & 2 Eng	200-1/2	A	800-2
		B	
3 & 4 Eng		C	
		D	
		600-2	

MMVA/VSA

JEPPESEN

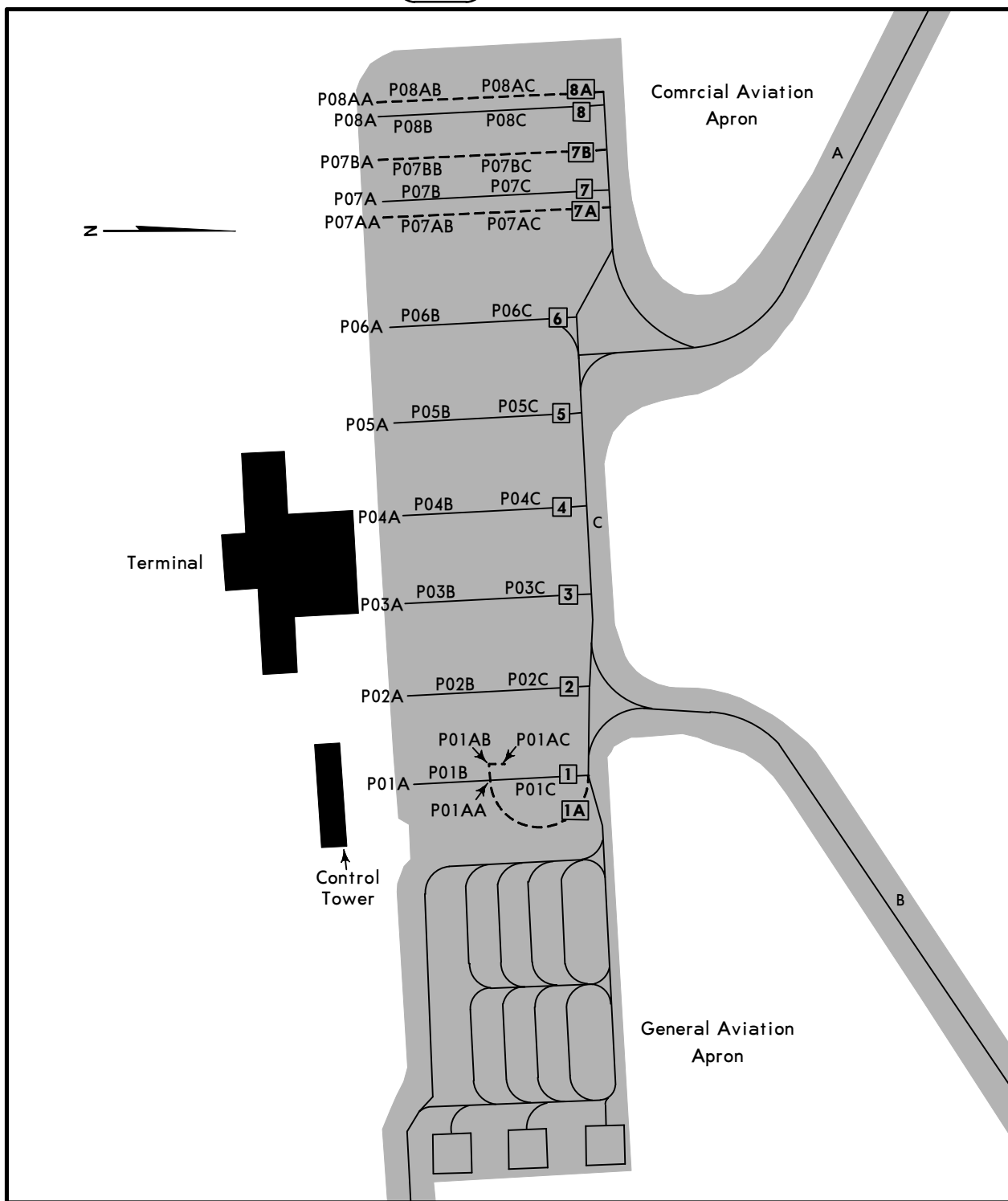
VILLAHERMOSA, MEXICO

5 AUG 22

10-9A

Eff 11 Aug

CPA CARLOS ROVIROSA INTL



PARKING SPOT COORDINATES

SPOT No.	COORDINATES
Commercial Aviation Apron	
P01A thru P03C P04A thru P07AC P07BA thru P08AC	N17 59.6 W092 49.1 N17 59.6 W092 49.2 N17 59.6 W092 49.3

MMVA/VSA

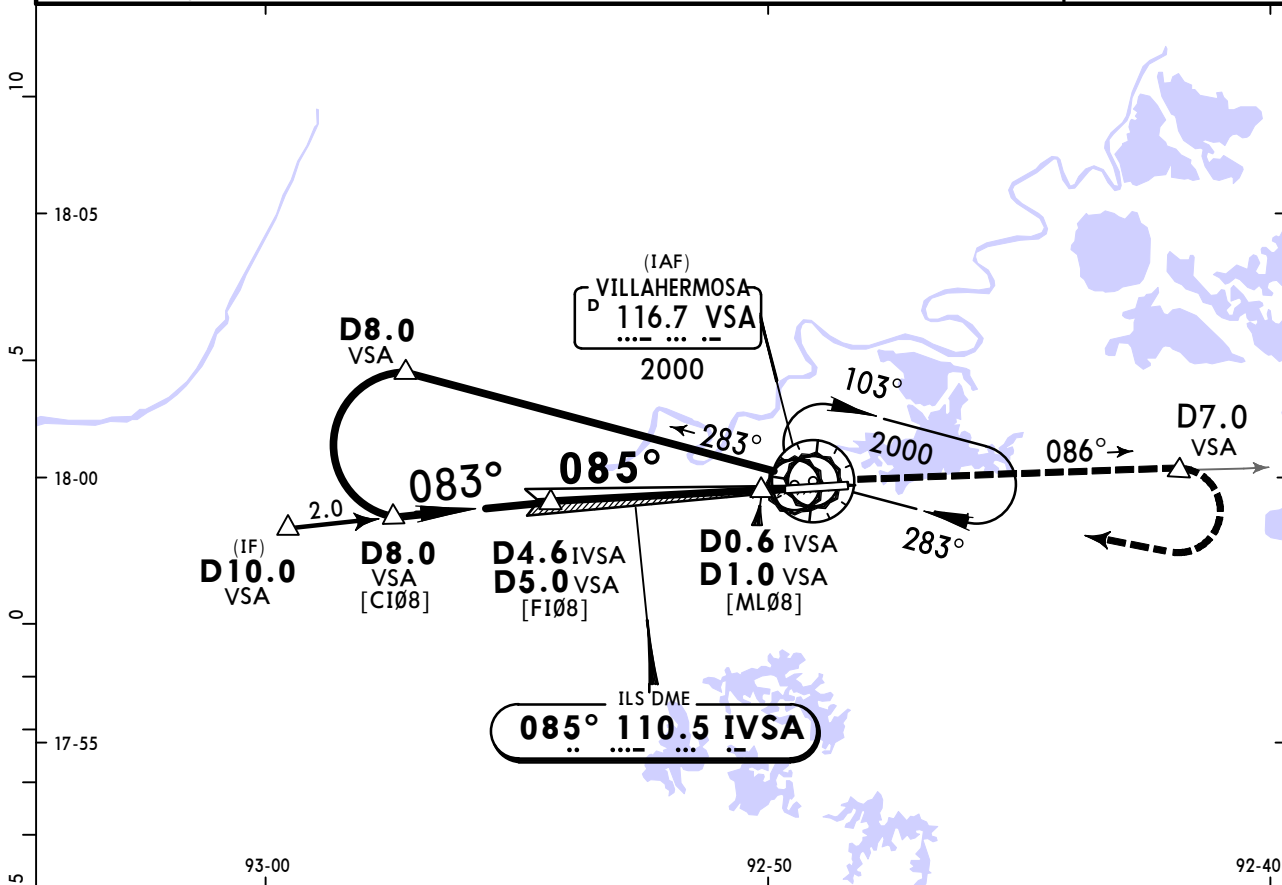
CPA CARLOS ROVIROSA INTL



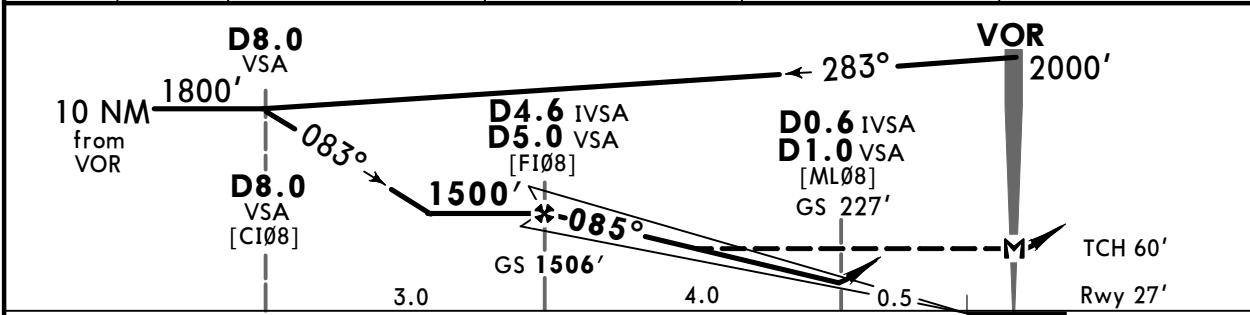
JEPPESEN VILLAHERMOSA, MEXICO

5 JUL 24 (11-1) Eff 11 Jul ILS or LOC Z Rwy 08

*VILLAHERMOSA Approach 120.9			*VILLAHERMOSA Tower 118.7		
LOC IVSA 110.5	Final Apch Crs 085°	D4.6 IVSA D5.0 VSA 1506' (1479')	ILS DA(H) 227' (200')	Apt Elev 46'	Rwy 27'
MISSED APCH: Climb outbound via VSA VOR R-086 to D7.0 VSA. Then turn RIGHT within 10 NM to VSA VOR at the minimum holding altitude.					
Alt Set: IN(MB on req)		Trans level: FL 195		Trans alt: 18500'	
VOR/DME required.					MSA VSA VOR



LOC	IVSA DME	4.0	3.0	2.0	1.0
(GS out)	ALTITUDE	1300'	980'	660'	340'



Gnd speed-Kts	70	90	100	120	140	160	ALSF-I PAPI 	VSA via 116.7 R-086 D7.0 VSA	
GS	3.00°	372	478	531	637	743			849
MAP at VOR									
FAF to Threshold	4.5	3:51	3:00	2:42	2:15	1:56			1:41

STRAIGHT-IN LANDING RWY08				CIRCLE-TO-LAND	
ILS DA(H) 227' (200')		LOC (GS out) MDA(H) 440' (413')		Max Kts	MDA(H)
ALS out		ALS out			
A	3/4	1		90	500' (454') - 1
B				120	500' (454') - 1 1/2
C				140	500' (454') - 1 1/2
D				165	600' (554') - 2

MMVA/VSA

CPA CARLOS ROVIROSA INTL 5 JUL 24 (11-2) Eff 11 Jul ILS or LOC Y Rwy 08

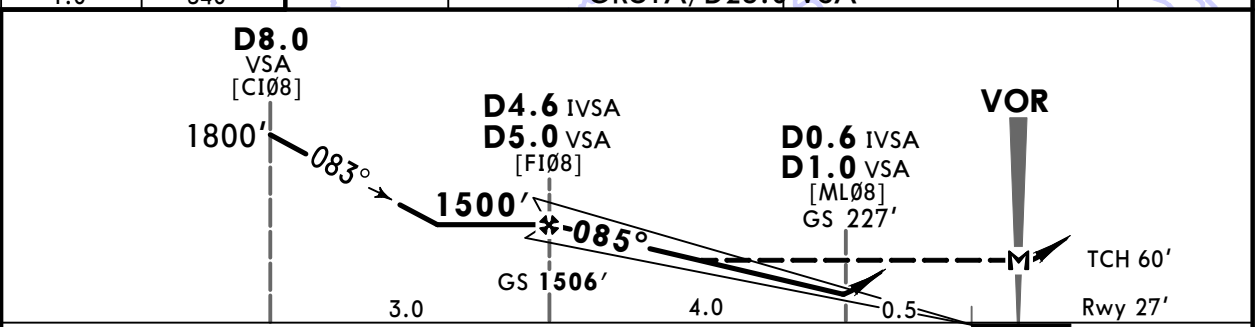


JEPPESEN VILLAHERMOSA, MEXICO

*VILLAHERMOSA Approach			*VILLAHERMOSA Tower			
120.9			118.7			
LOC IVSA 110.5	Final Apch Crs 085°	D4.6 IVSA D5.0 VSA 1506' (1479')	ILS DA(H) 227' (200')	Apt Elev 46'	Rwy 27'	
MISSED APCH: Climb outbound via VSA VOR R-086 to D7.0 VSA. Then turn RIGHT within 10 NM to VSA VOR at the minimum holding altitude.						
Alt Set: IN(MB on req)			Trans level: FL 195			Trans alt: 18500'
1. VOR/DME required. 2. In case of DME failure during the procedure, maintain last assigned altitude and proceed to the station in accordance with ATC instructions.						



RECOMMENDED ALTITUDES	
LOC (GS out)	
IVSA DME	ALTITUDE
4.0	1300'
3.0	980'
2.0	660'
1.0	340'



Gnd speed-Kts	70	90	100	120	140	160
GS	3.00°	372	478	531	637	743
MAP at VOR						
FAF to Threshold	4.5	3:51	3:00	2:42	2:15	1:56

ALSFI
PAPI

VIA **116.7 R-086** VSA

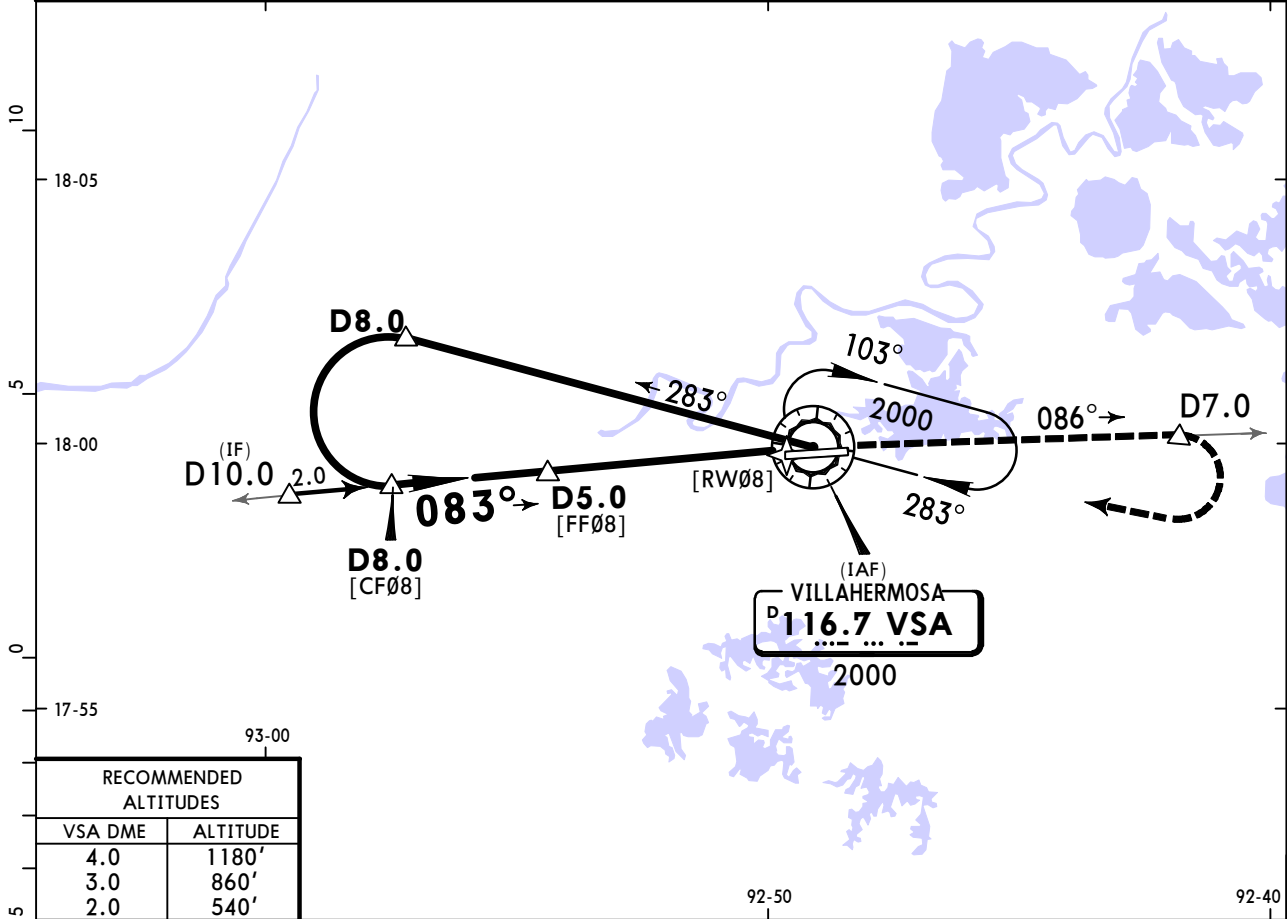
D7.0 VSA

STRAIGHT-IN LANDING RWY08		CIRCLE-TO-LAND	
ILS	LOC (GS out)	Max Kts	MDA(H)
DA(H) 227' (200')	MDA(H) 440' (413')	90	500' (454') - 1
ALS out	ALS out	120	500' (454') - 1 1/2
A	3/4	140	500' (454') - 1 1/2
B		165	600' (554') - 2
C			
D			

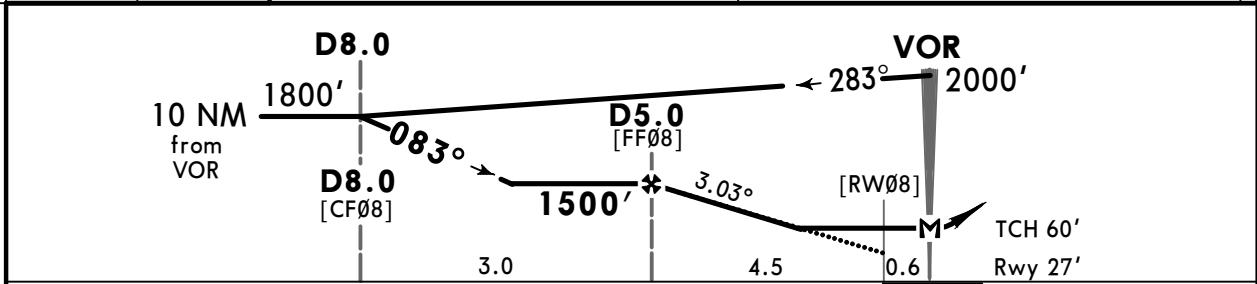
CHANGES: Procedure title, req note.

MMVA/VSA
CPA CARLOS ROVIROSA INTL 5 JUL 24 (13-1) **Eff 11 Jul** **VILLAHERMOSA, MEXICO**
VOR Z Rwy 08

*VILLAHERMOSA Approach				*VILLAHERMOSA Tower		
120.9				118.7		
VOR VSA 116.7	Final Apch Crs 083°	D5.0 1500' (1473')	MDA(H) 460' (433')	Apt Elev 46' Rwy 27'		
MISSED APCH: Climb outbound via VSA VOR R-086 to D7.0, then turn RIGHT within 10 NM to VSA VOR at the minimum holding altitude.						
Alt Set: IN (MB on req)		Trans level: FL 195		Trans alt: 18500'		
DME required.						MSA VSA VOR



RECOMMENDED ALTITUDES	
VSA DME	ALTITUDE
4.0	1180'
3.0	860'
2.0	540'



Gnd speed-Kts	70	90	100	120	140	160		VSA via 116.7 R-086	D7.0
Descent Angle	3.03°	375	482	536	643	750			
MAP at VOR									

STRAIGHT-IN LANDING RWY08				CIRCLE-TO-LAND	
MDA(H) 460' (433')				MDA(H)	
			ALS out	Max Kts	
A	1			90	500' (454') - 1
B	1 1/4			120	500' (454') - 1 1/2
C	1 1/2			140	600' (554') - 2
D				165	

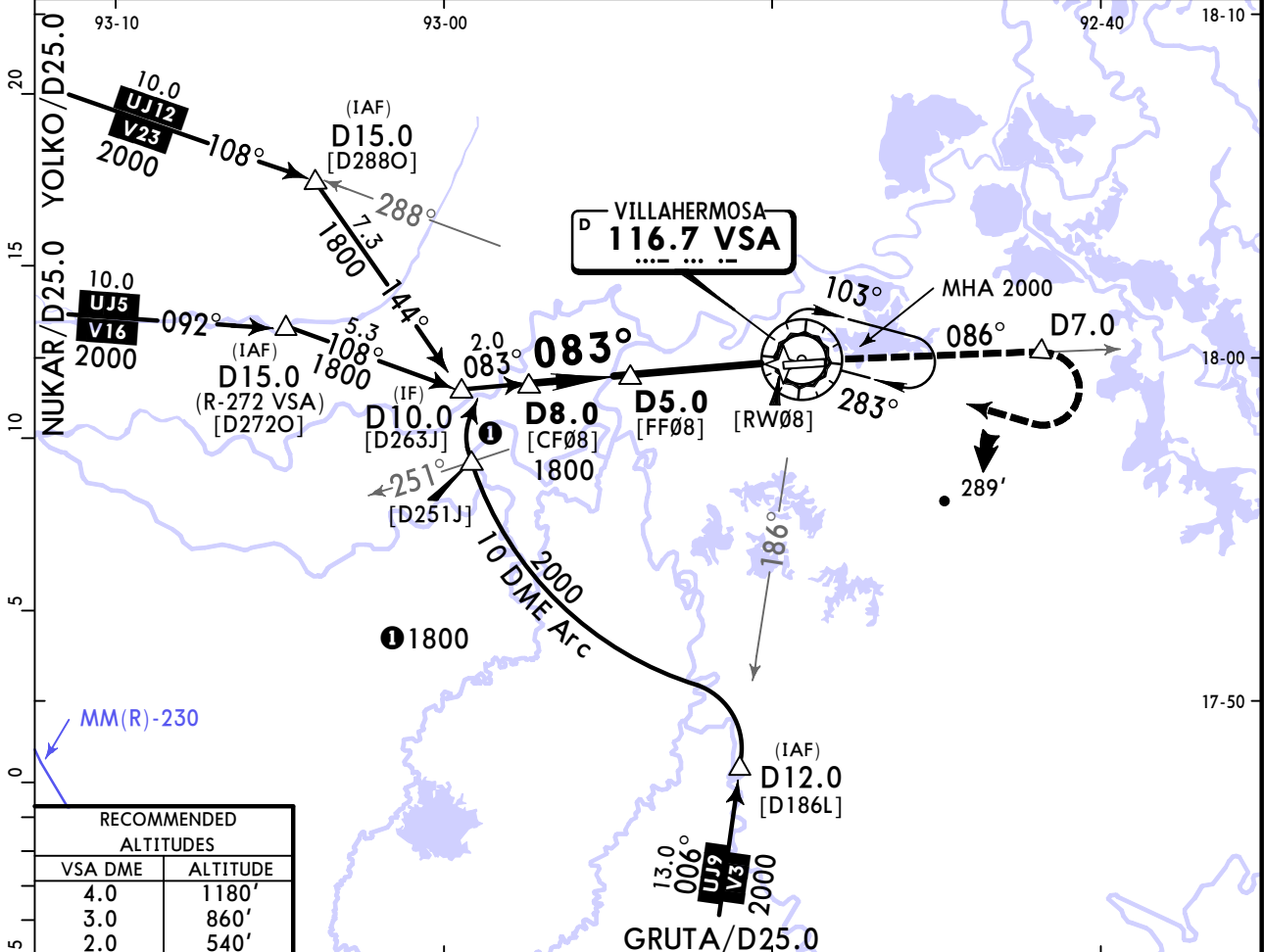
MMVA/VSA

CPA CARLOS ROVIROSA INTL

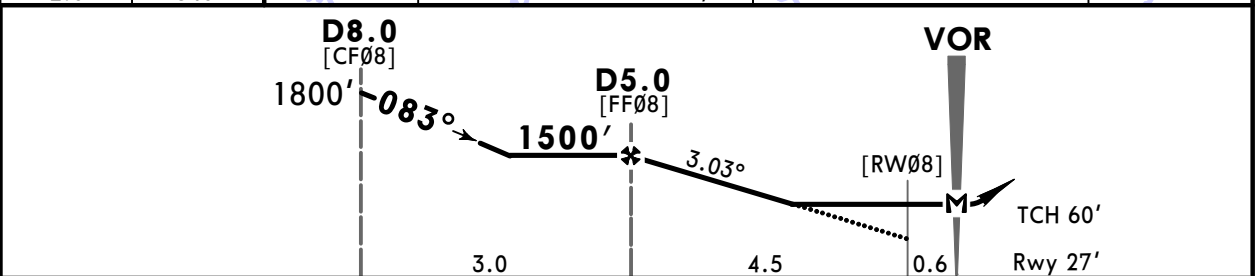
JEPPESEN VILLAHERMOSA, MEXICO

5 JUL 24 **13-2** **Eff 11 Jul** **VOR Y Rwy 08**

*VILLAHERMOSA Approach			*VILLAHERMOSA Tower			
120.9			118.7			
VOR VSA 116.7	Final Apch Crs 083°	D5.0 1500' (1473')	MDA(H) 460' (433')	Apt Elev 46' Rwy 27'		
MISSED APCH: Climb outbound via VSA VOR R-086 to D7.0, then turn RIGHT within 10 NM to VSA VOR at the minimum holding altitude.						
Alt Set: IN (MB on req)			Trans level: FL 195			Trans alt: 18500'
1. DME required. 2. In case of DME failure during the procedure, maintain last assigned altitude and proceed to the station in accordance with ATC instructions.						



RECOMMENDED ALTITUDES	
VSA DME	ALTITUDE
4.0	1180'
3.0	860'
2.0	540'

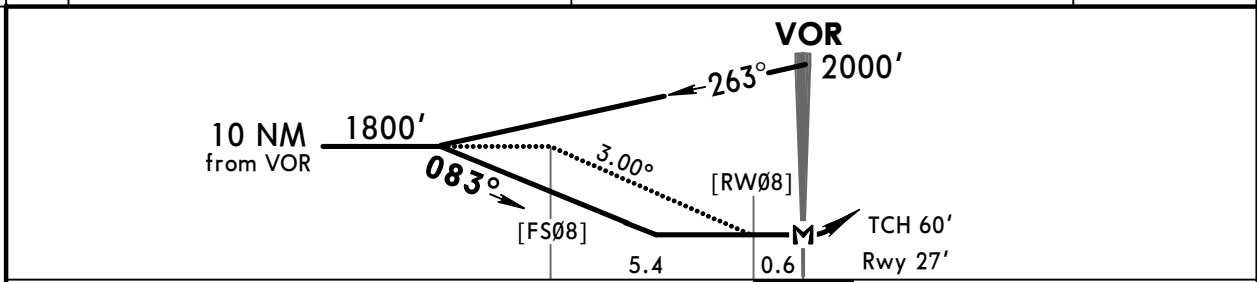
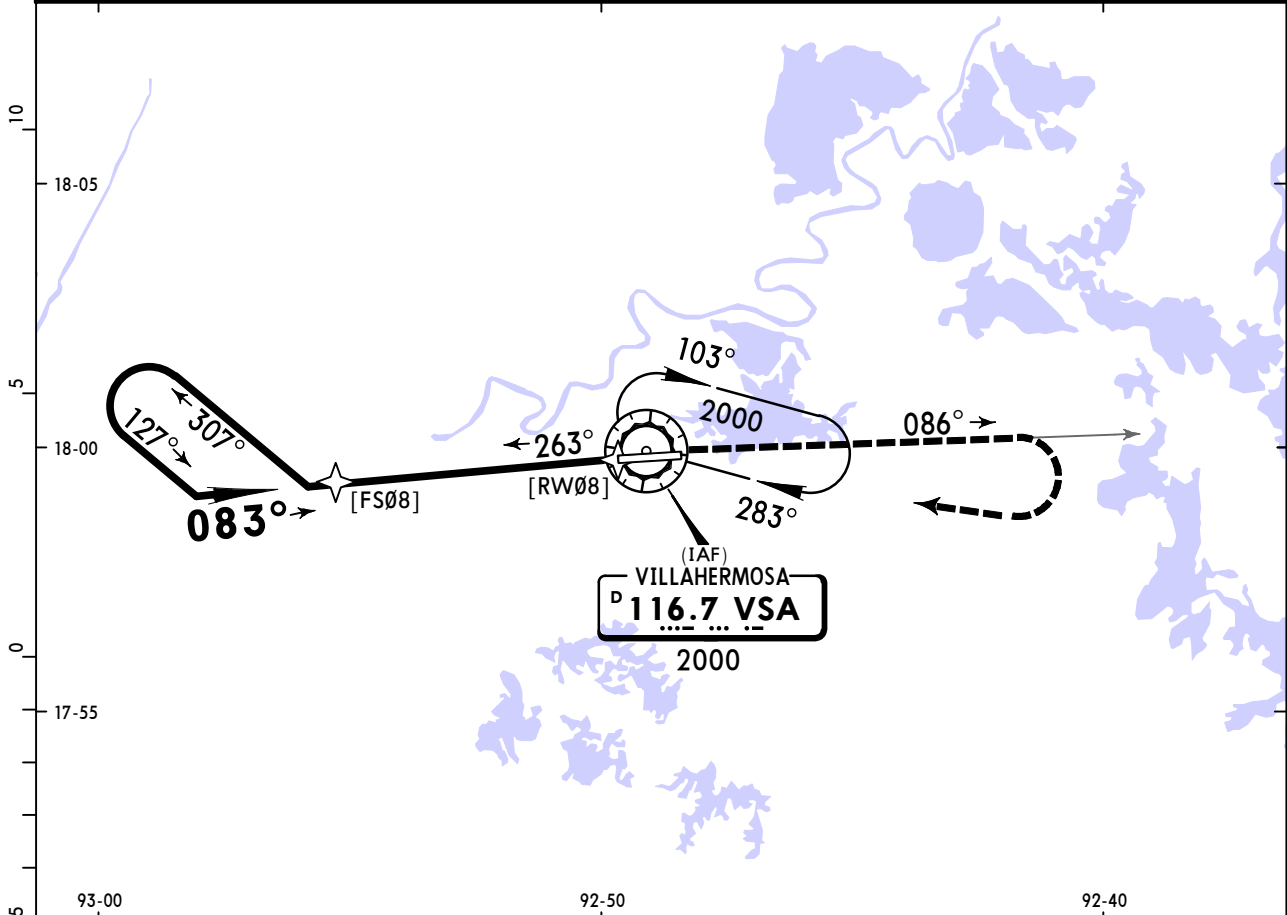


Gnd speed-Kts	70	90	100	120	140	160	ALSF-I PAPI 	VSA via 116.7 R-086	D7.0	
Descent Angle	3.03°	375	482	536	643	750				858
MAP at VOR										

STRAIGHT-IN LANDING RWY 08				CIRCLE-TO-LAND	
MDA(H) 460' (433')					
			ALS out	Max Kts	MDA(H)
A	1			90	500'(454') -1
B	1			120	500'(454') -1
C	1¼			140	500'(454') -1½
D	1½			165	600'(554') -2

MMVA/VSA
CPA CARLOS ROVIROSA INTL 5 JUL 24 **(13-3)** **Eff 11 Jul** **JEPPESEN VILLAHERMOSA, MEXICO**
VOR X Rwy 08

*VILLAHERMOSA Approach				*VILLAHERMOSA Tower			
120.9				118.7			
VOR VSA 116.7	Final Apch Crs 083°	No FAF	MDA(H) 840' (813')	Apt Elev 46'		Rwy 27'	
MISSED APCH: Climb outbound via VSA VOR R-086, turn RIGHT within 10 NM to VSA VOR at the minimum holding altitude.							
MISSED APCH: Max Distance Outbound Track 7 NM							
Gnd speed-Kts	80	100	120	140	160	180	
Time	5:15	4:12	3:30	3:00	2:38	2:20	2:06
Alt Set: IN (MB on req)		Trans level: FL 195			Trans alt: 18500'		



Gnd speed-Kts	70	90	100	120	140	160	ALSF-I PAPI	VSA via 116.7 R-086
Descent Angle	3.00°	372	478	531	637	743		
MAP at VOR								

STRAIGHT-IN LANDING RWY08				CIRCLE-TO-LAND			
MDA(H) 840' (813')							
			ALS out	Max Kts	MDA(H)		
A	1			90	840' (794') - 1		
B	1 1/4			120	840' (794') - 1 1/4		
C	2 1/2			140	840' (794') - 2 1/2		
D	2 3/4			165	840' (794') - 2 3/4		

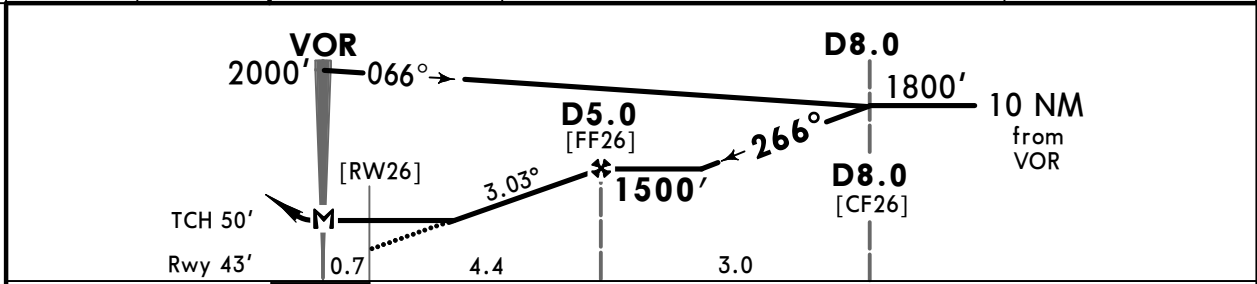
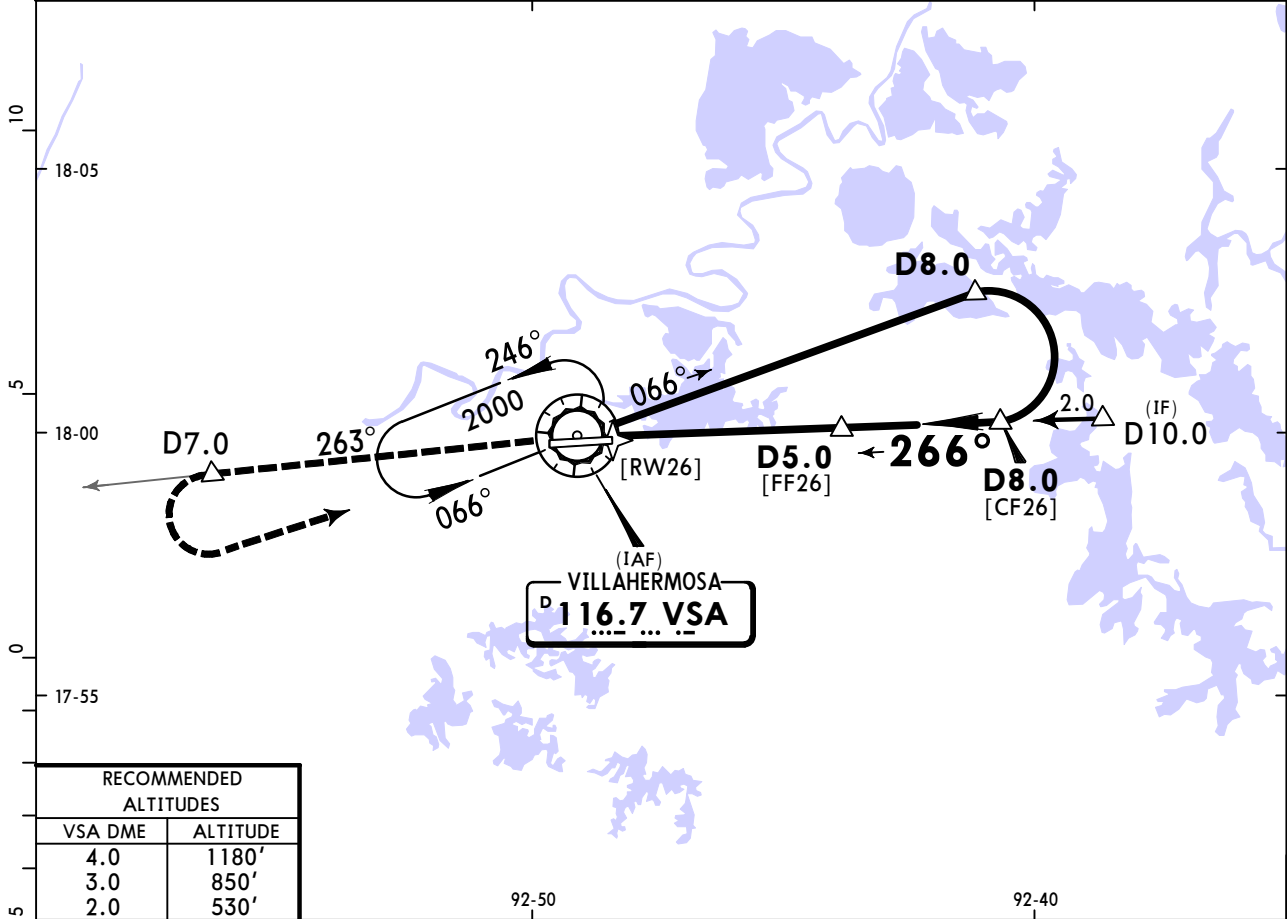
MMVA/VSA

CPA CARLOS ROVIROSA INTL

JEPPESEN VILLAHERMOSA, MEXICO

5 JUL 24 (13-4) Eff 11 Jul VOR Z Rwy 26

*VILLAHERMOSA Approach				*VILLAHERMOSA Tower		
120.9				118.7		
VOR VSA 116.7	Final Apch Crs 266°	D5.0 1500' (1457')	MDA(H) 460' (417')	Apt Elev 46' Rwy 43'		
MISSED APCH: Climb outbound via VSA VOR R-263 to D7.0, then turn LEFT within 10 NM to VSA VOR at the minimum holding altitude.						
Alt Set: IN (MB on req)		Trans level: FL 195		Trans alt: 18500'		MSA VSA VOR
DME required.						



Gnd speed-Kts	70	90	100	120	140	160	PAPI-L	VSA via 116.7 R-263	D7.0
Descent Angle	3.03°	375	482	536	643	750			
MAP at VOR									

STRAIGHT-IN LANDING RWY26			CIRCLE-TO-LAND		
MDA(H) 460' (417')			MDA(H)		
A	1	90	500' (454') - 1		
B			120	500' (454') - 1½	
C	1¼	140	500' (454') - 1½		
D		165	600' (554') - 2		

MMVA/VSA

CPA CARLOS ROVIROSA INTL

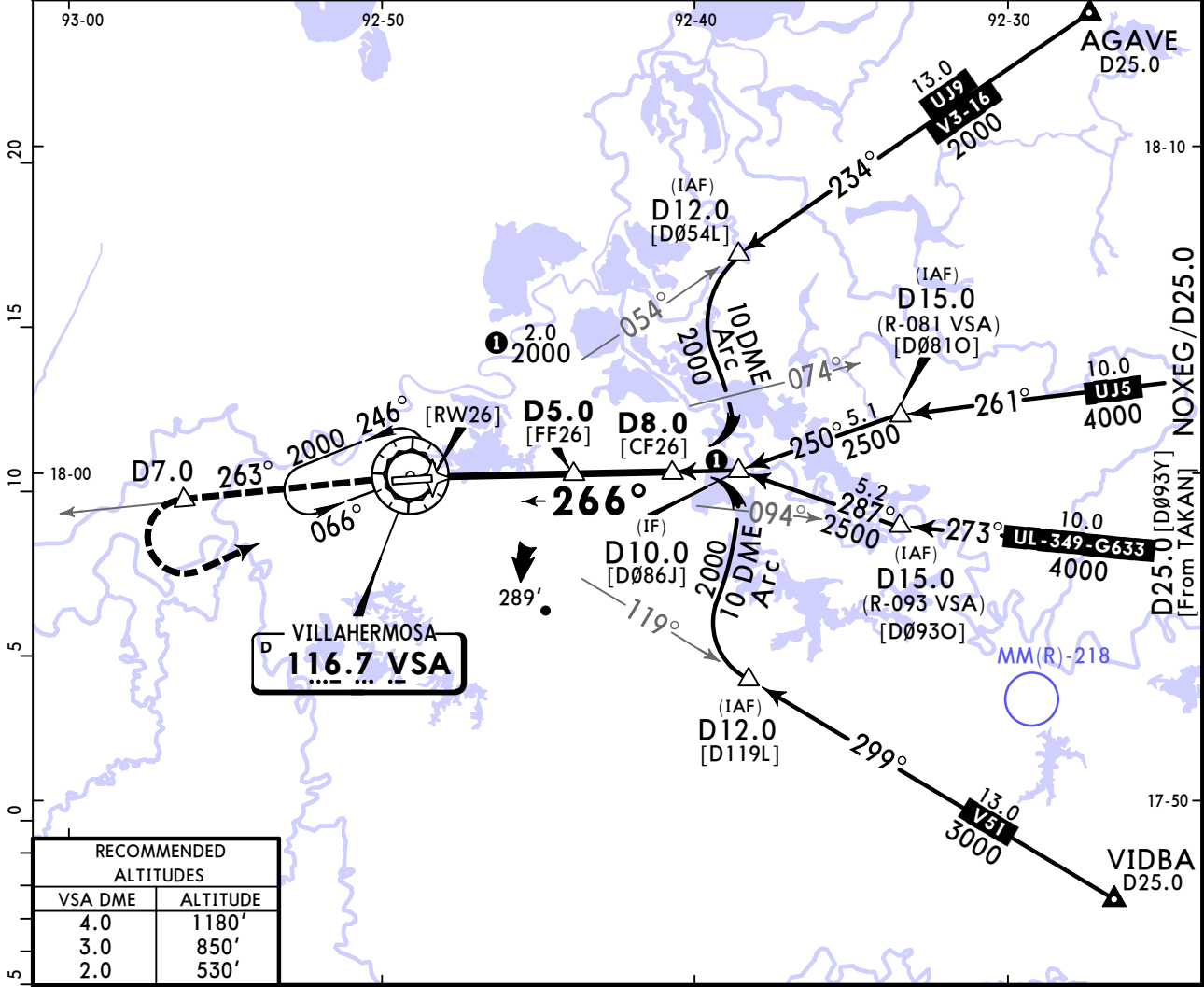


JEPPESEN VILLAHERMOSA, MEXICO

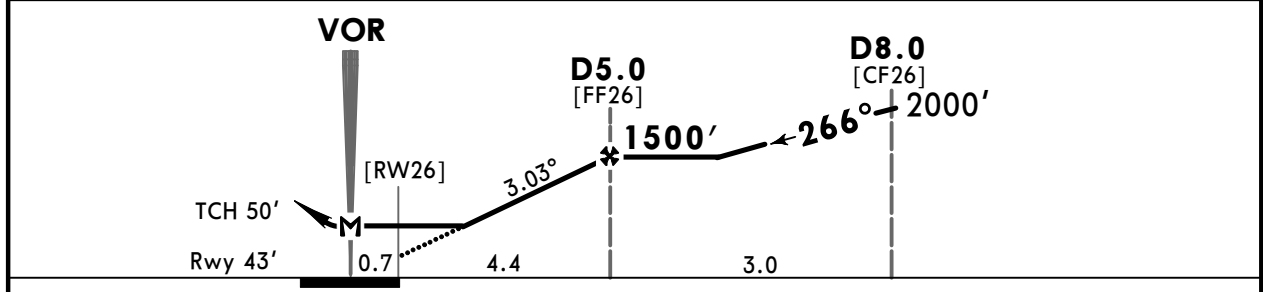
5 JUL 24 (13-5) Eff 11 Jul

VOR Y Rwy 26

*VILLAHERMOSA Approach				*VILLAHERMOSA Tower		
120.9				118.7		
VOR VSA 116.7	Final Apch Crs 266°	D5.0 1500' (1457')	MDA(H) 460' (417')	Apt Elev 46' Rwy 43'		<p>MSA VSA VOR</p>
MISSED APCH: Climb outbound via VSA VOR R-263 to D7.0, then turn LEFT within 10 NM to VSA VOR at the minimum holding altitude.						
Alt Set: IN(MB on req) Rwy Elev: 2 MB Trans level: FL 195 Trans alt: 18500'						
1. DME required. 2. In case of DME failure during the procedure, maintain last assigned altitude and proceed to the station in accordance with ATC instructions.						



RECOMMENDED ALTITUDES	
VSA DME	ALTITUDE
4.0	1180'
3.0	850'
2.0	530'



Gnd speed-Kts	70	90	100	120	140	160	PAPI-L	VSA via 116.7 R-263	D7.0
Descent Angle	3.03°	375	482	536	643	750			
MAP at VOR									

STRAIGHT-IN LANDING RWY26			CIRCLE-TO-LAND		
MDA(H) 460' (417')			MDA(H)		
A	1		90	500' (454') -1	
B	1		120	500' (454') -1	
C	1 1/4		140	500' (454') -1 1/2	
D	1 1/4		165	600' (554') -2	

MMVA/VSA

CPA CARLOS ROVIROSA INTL



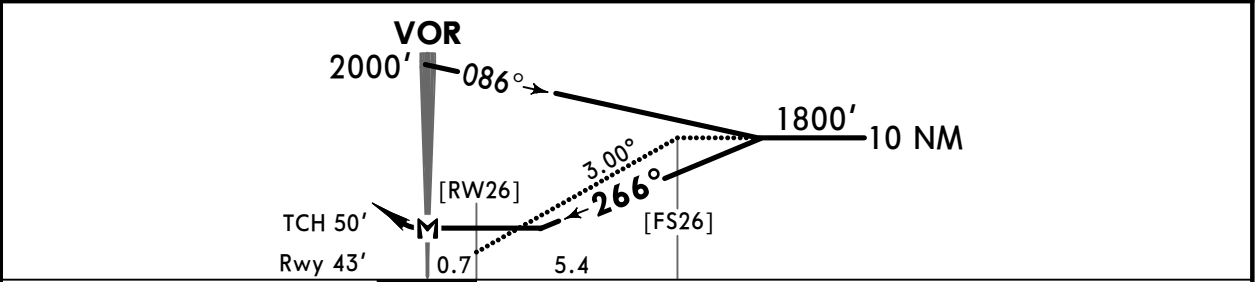
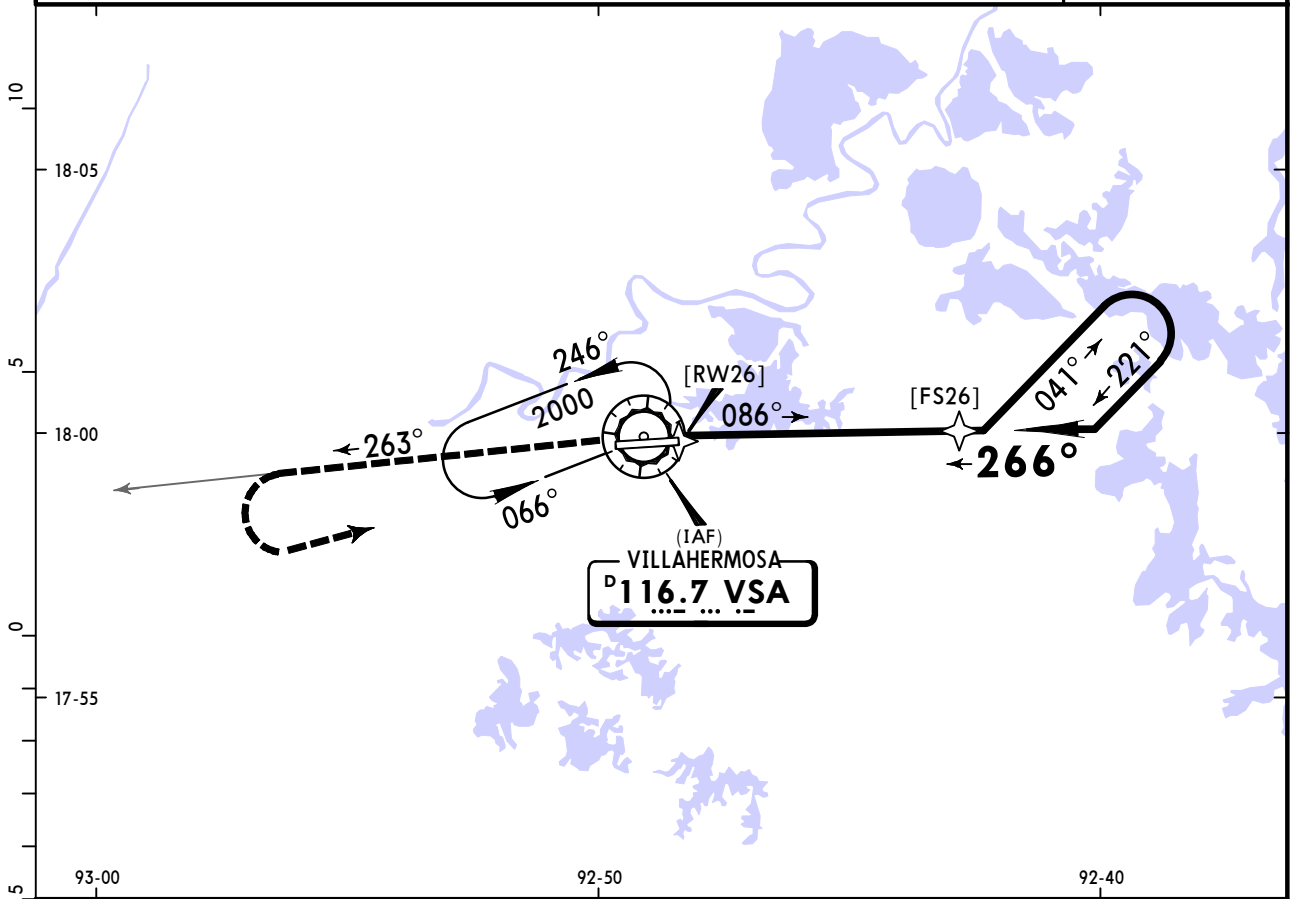
JEPPESSEN VILLAHERMOSA, MEXICO

5 JUL 24 (13-6)

Eff 11 Jul

VOR X Rwy 26

*VILLAHERMOSA Approach				*VILLAHERMOSA Tower				
120.9				118.7				
VOR VSA 116.7	Final Apch Crs 266°	No FAF	MDA(H) 500' (457')	Apt Elev 46' Rwy 43'		<p>MSA VSA VOR</p>		
MISSED APCH: Climb outbound via VSA VOR R-263, then turn LEFT within 10 NM to VSA VOR at the minimum holding altitude.								
MISSED APCH: Max Distance Outbound Track 7 NM								
Gnd speed-Kts		80	100	120	140	160	180	200
Time		5:15	4:12	3:30	3:00	2:38	2:20	2:06
Alt Set: IN(MB on req)		Rwy Elev: 2 MB		Trans level: FL 195		Trans alt: 18500'		



Gnd speed-Kts	70	90	100	120	140	160	PAPI-L	VSA via 116.7 R-263	
Descent Angle	3.00°	372	478	531	637	743			849
MAP at VOR									

STRAIGHT-IN LANDING RWY26			CIRCLE-TO-LAND		
MDA(H) 500' (457')			MDA(H)		
A	1		90	560' (514') - 1	
B	1		120	560' (514') - 1	
C	1¼		140	560' (514') - 1½	
D	1½		165	600' (554') - 2	