

General Information

Location: PUEBLA MEX
ICAO/IATA: MMPB / PBC
Lat/Long: N19° 09.5', W098° 22.3'
Elevation: 7361 ft

Airport Use: Public
Daylight Savings: Not Observed
UTC Conversion: +6:00 = UTC
Magnetic Variation: 4.0° E

Fuel Types: 100-130 Octane, Jet A-1
Customs: Yes
Airport Type: IFR
Landing Fee: No
Control Tower: Yes
Jet Start Unit: No
LLWS Alert: No
Beacon: No

Sunrise: 1220 Z
Sunset: 0040 Z

Runway Information

Runway: 17
Length x Width: 11811 ft x 148 ft
Surface Type: asphalt
TDZ-Elev: 7354 ft
Lighting: Edge

Runway: 35
Length x Width: 11811 ft x 148 ft
Surface Type: asphalt
TDZ-Elev: 7308 ft
Lighting: Edge

Communication Information

Puebla Tower: 118.200
Puebla Approach: 127.000
Mexico Departure: 120.500
Mexico Control ACC: 123.500 RCO
Mexico Control ACC: 124.000 RCO

Mexico Control ACC: 128.250 RCO

Mexico Radar: 119.250

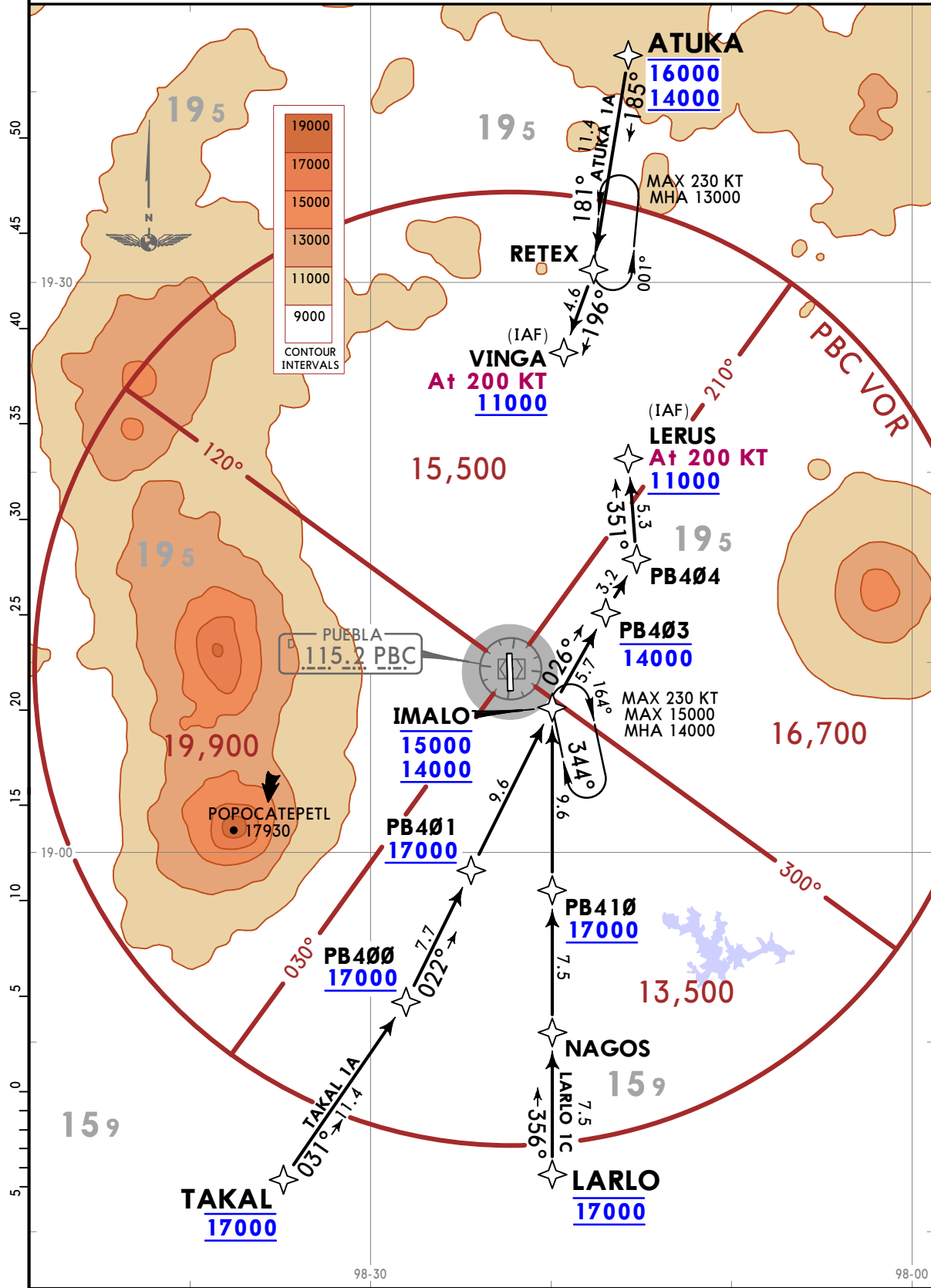
MMPB/PBC
HERMANOS SERDAN INTL

JEPPESEN
22 JAN 21 10-2 Eff 28 Jan

PUEBLA, MEXICO
RNAV STAR

Apt Elev 7361	Alt Set: IN (MB on req) 1. RNP 1. 2. GNSS required.	Trans level: FL195
------------------	---	--------------------

**ATUKA 1A (ATUKA1A) [ATUK1A], LARLO 1C (LARLO1C) [LARL1C]
TAKAL 1A (TAKAL1A) [TAKA1A]
RNP ARRIVALS
(RWY 17)**



CHANGES: Speed restrictions.

© JEPPESEN, 2020, 2021. ALL RIGHTS RESERVED.

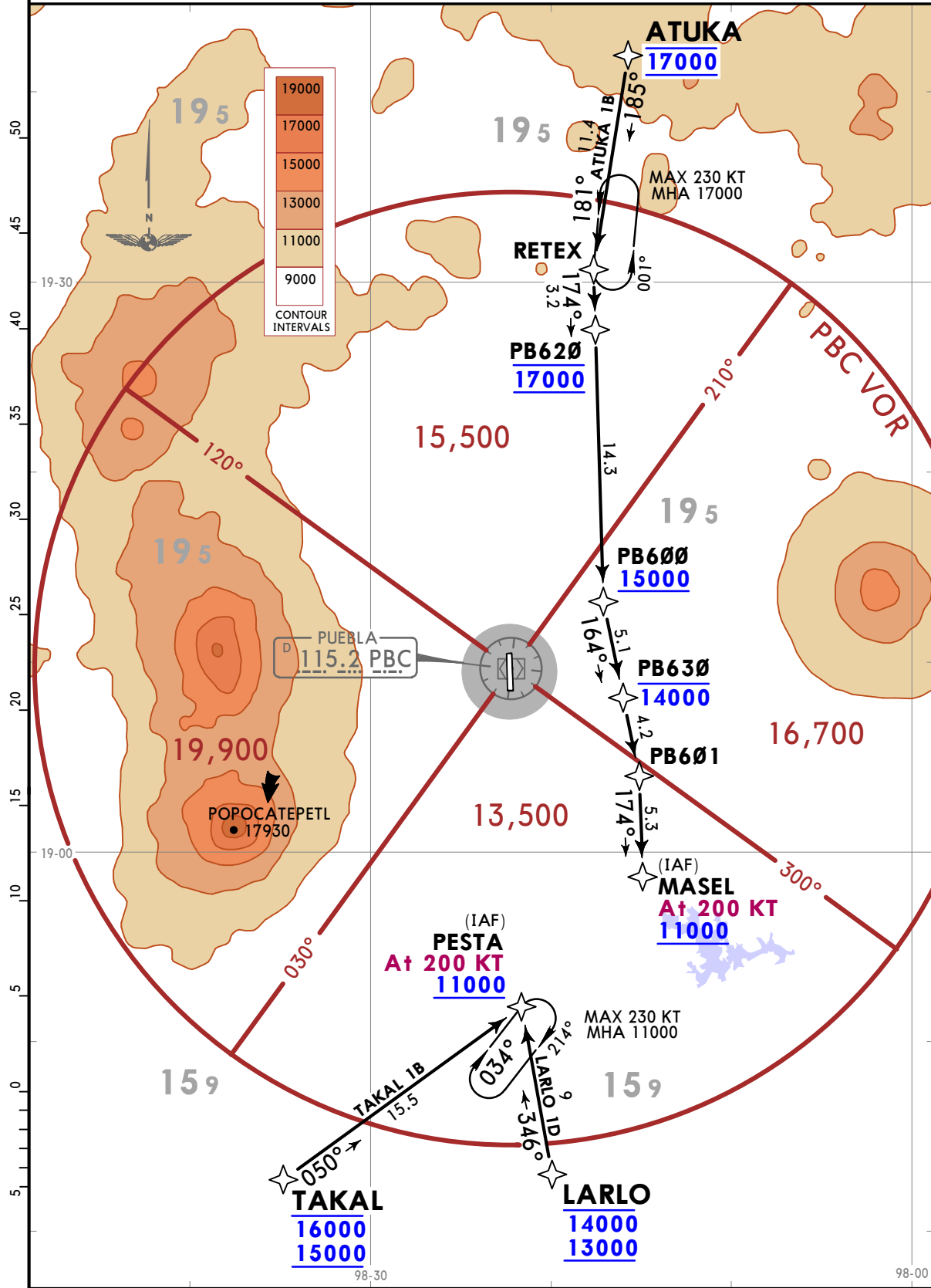
MMPB/PBC
HERMANOS SERDAN INTL

JEPPESEN
22 JAN 21 (10-2A) Eff 28 Jan

PUEBLA, MEXICO
RNAV STAR

Apt Elev 7361	Alt Set: IN (MB on req) 1. RNP 1. 2. GNSS required.	Trans level: FL195
------------------	---	--------------------

ATUKA 1B (ATUKA1B) [ATUK1B], LARLO 1D (LARLO1D) [LARL1D]
TAKAL 1B (TAKAL1B) [TAKA1B]
RNP ARRIVALS
(RWY 35)



CHANGES: Speed restrictions.

© JEPPESEN, 2020, 2021. ALL RIGHTS RESERVED.

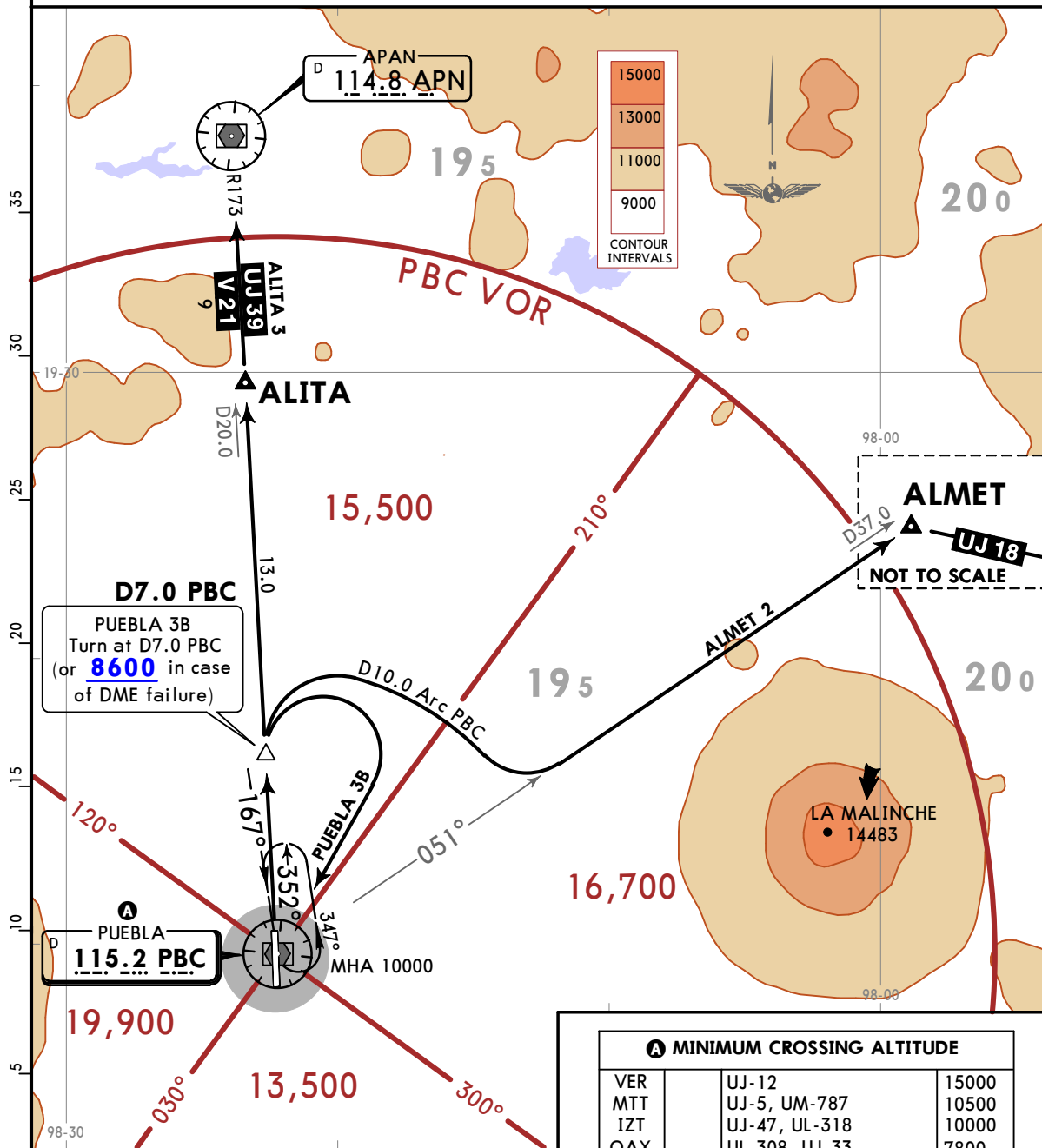
MMPB/PBC
HERMANOS SERDAN INTL

JEPPESEN
18 FEB 22 10-3 Eff 24 Feb

PUEBLA, MEXICO
SID

Apt Elev 7361	Trans alt: 18500 ALITA 3 SID: In case of failure of APN VOR EXPECT RADAR vectors.
------------------	--

ALITA 3 (ALITA3), ALMET 2 (ALMET2), PUEBLA 3B (PBC3B)
DEPARTURES
(RWY 35)



ALMET 2 requires a minimum climb gradient of 300 per NM (4.9%) to 14000.

Gnd speed-KT	75	100	150	200	250	300
300 per NM	375	500	750	1000	1250	1500

A MINIMUM CROSSING ALTITUDE			
VER		UJ-12	15000
MTT		UJ-5, UM-787	10500
IZT		UJ-47, UL-318	10000
OAX		UL-308, UJ-33	7800
CUA	V-21	UJ-39	13500
TLC		UJ-12	18000
MEX		UJ-5, UL-318, UM-787	18200
SLM		UJ-33-47	13500
APN	V-21	UJ-39	10000

SID	INITIAL CLIMB
ALITA 3	Climb via PBC R352 to ALITA, proceed direct to APN VOR and continue on the assigned route or ATC instructions.
ALMET 2	Climb via PBC R352 to D7.0 PBC, then turn RIGHT and proceed on D10.0 Arc PBC to intercept PBC R051 to ALMET and continue on the assigned route or ATC instructions.
PUEBLA 3B	Climb via PBC R352 to D7.0 PBC (or 8600 in case of DME failure), turn RIGHT within 10 NM to PBC VOR and depart PBC VOR according to the MCA A of the assigned route, utilizing the holding pattern if necessary, or ATC instructions.

CHANGES: APN VOR radial, MCA.

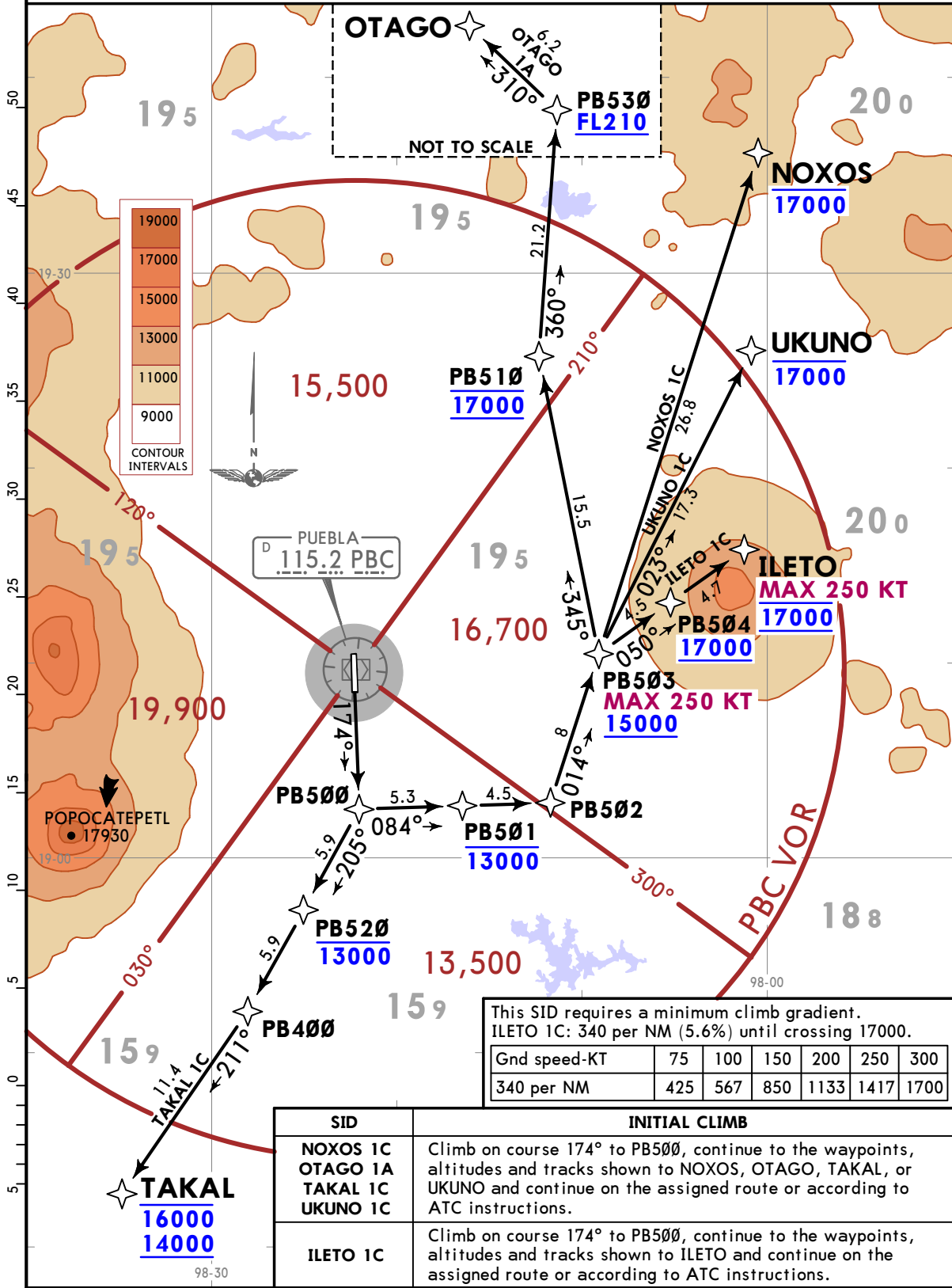
MMPB/PBC
HERMANOS SERDAN INTL

JEPPESEN
18 FEB 22 **(10-3A)** Eff 24 Feb

PUEBLA, MEXICO
RNAV SID

Apt Elev 7361	Trans alt: 18500
	RNP 1 GNSS required

**ILETO 1C (ILETO1C) [ILET1C], NOXOS 1C (NOXOS1C) [NOX01C]
OTAGO 1A (OTAGO1A) [OTAG1A], TAKAL 1C (TAKAL1C) [TAKA1C]
UKUNO 1C (UKUNO1C) [UKUN1C]
RNP DEPARTURES
(RWY 17)**



This SID requires a minimum climb gradient.
ILETO 1C: 340 per NM (5.6%) until crossing 17000.

Gnd speed-KT	75	100	150	200	250	300
340 per NM	425	567	850	1133	1417	1700

SID	INITIAL CLIMB
NOXOS 1C OTAGO 1A TAKAL 1C UKUNO 1C	Climb on course 174° to PB500, continue to the waypoints, altitudes and tracks shown to NOXOS, OTAGO, TAKAL, or UKUNO and continue on the assigned route or according to ATC instructions.
ILETO 1C	Climb on course 174° to PB500, continue to the waypoints, altitudes and tracks shown to ILETO and continue on the assigned route or according to ATC instructions.

CHANGES: ATUKA 1C withdrawn, OTAGO 1A established.

© JEPPESEN, 2020, 2022. ALL RIGHTS RESERVED.

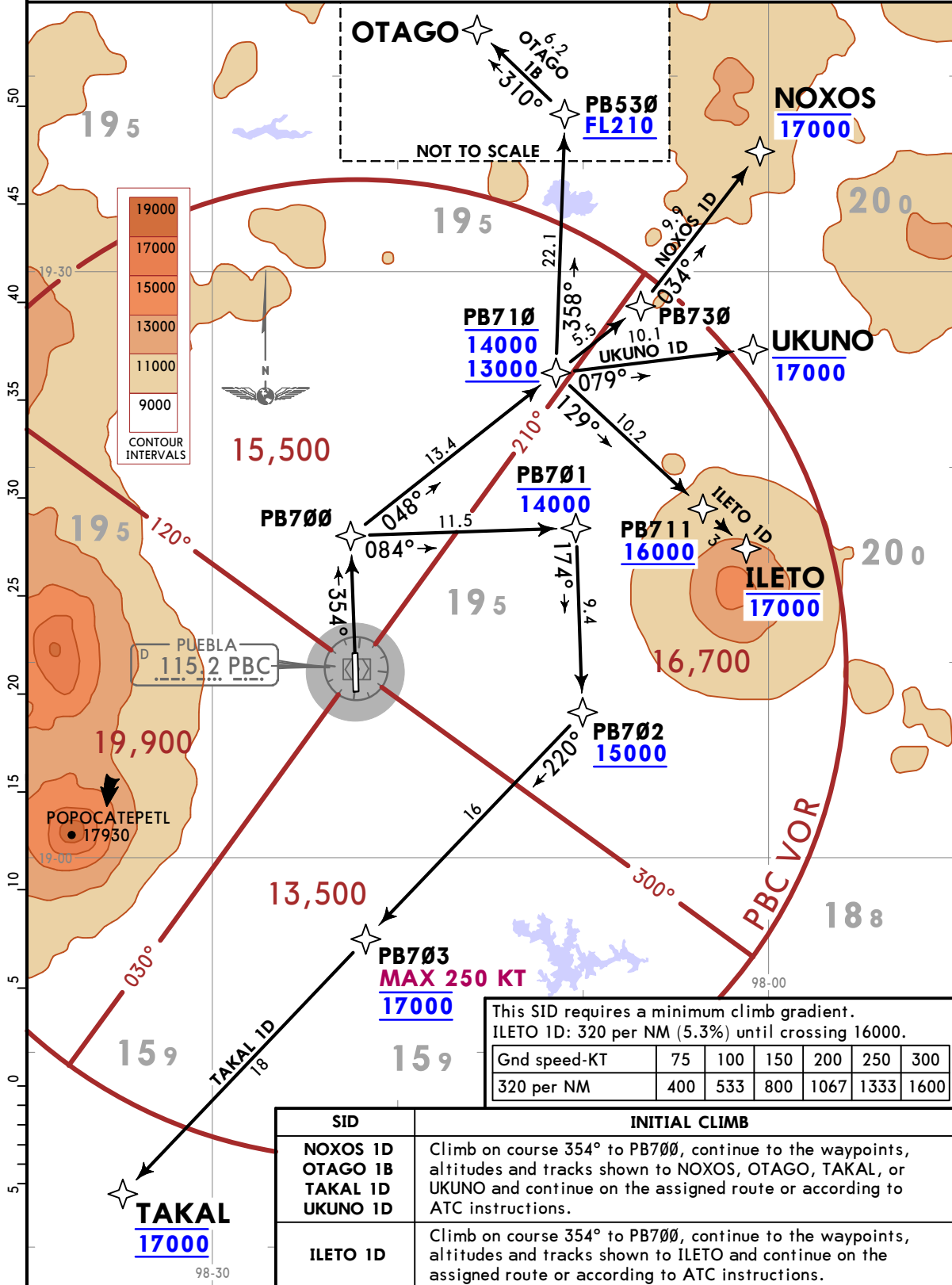
MMPB/PBC
HERMANOS SERDAN INTL

JEPPESEN
18 FEB 22 **10-3B** Eff 24 Feb

PUEBLA, MEXICO
RNAV SID

Apt Elev 7361	Trans alt: 18500
	RNP 1 GNSS required

**ILETO 1D (ILETO1D) [ILET1D], NOXOS 1D (NOXOS1D) [NOX01D]
OTAGO 1B (OTAGO1B) [OTAG1B], TAKAL 1D (TAKAL1D) [TAKA1D]
UKUNO 1D (UKUNO1D) [UKUN1D]
RNP DEPARTURES
(RWY 35)**



This SID requires a minimum climb gradient.
ILETO 1D: 320 per NM (5.3%) until crossing 16000.

Gnd speed-KT	75	100	150	200	250	300
320 per NM	400	533	800	1067	1333	1600

SID	INITIAL CLIMB
NOXOS 1D OTAGO 1B TAKAL 1D UKUNO 1D	Climb on course 354° to PB700, continue to the waypoints, altitudes and tracks shown to NOXOS, OTAGO, TAKAL, or UKUNO and continue on the assigned route or according to ATC instructions.
ILETO 1D	Climb on course 354° to PB700, continue to the waypoints, altitudes and tracks shown to ILETO and continue on the assigned route or according to ATC instructions.

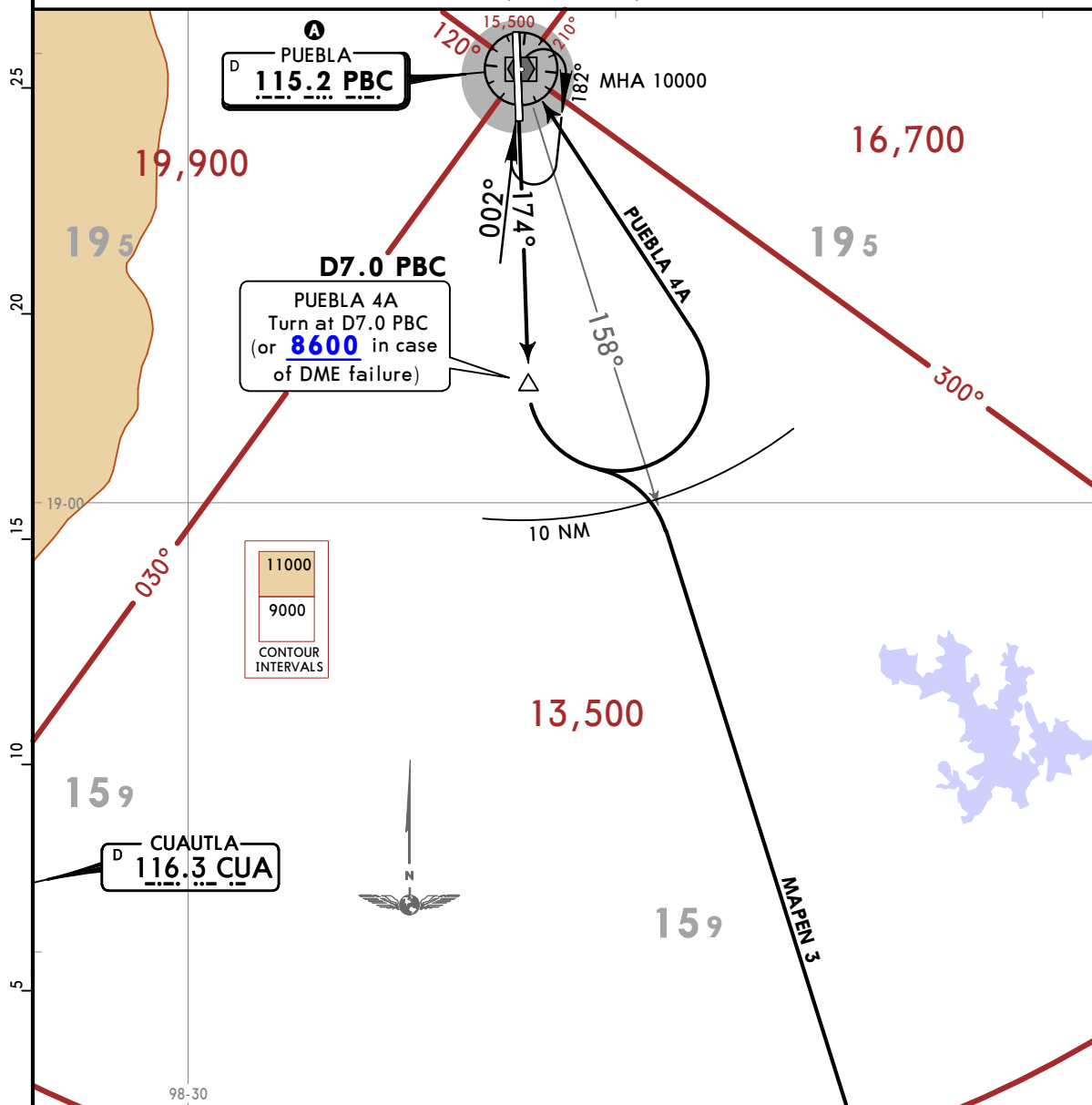
MMPB/PBC
HERMANOS SERDAN INTL

JEPPESEN
18 FEB 22 **10-3C** Eff 24 Feb

PUEBLA, MEXICO
SID

Apt Elev **7361** Trans alt: 18500
MAPEN 3 SID: In case of failure of CUA VOR and/or PBC VOR
EXPECT RADAR vectors.

**MAPEN 3 (MAPEN3), PUEBLA 4A (PBC4A)
DEPARTURES
(RWY 17)**



11000
9000
CONTOUR
INTERVALS

A MINIMUM CROSSING ALTITUDE			
VER		UJ-12	15000
MTT		UJ-5, UM-787	10500
IZT		UJ-47, UL-318	10000
OAX		UL-308, UJ-33	7800
CUA	V-21	UJ-39	13500
TLC		UJ-12	18000
MEX		UJ-5, UL-318, UM-787	18200
SLM		UJ-33-47	13500
APN	V-21	UJ-39	10000

SID	INITIAL CLIMB
MAPEN 3	Climb on PBC R174 to D7.0 PBC, turn LEFT to intercept PBC R158 to MAPEN and continue on the assigned route or ATC instructions.
PUEBLA 4A	Climb on PBC R174 to D7.0 PBC (or 8600 in case of DME failure), turn LEFT within 10 NM to PBC VOR and depart PBC VOR according to the MCA A of the assigned route, utilizing the holding pattern if necessary, or ATC instructions.

MMPB/PBC

Apt Elev **7361'**
N19 09.5 W098 22.3

JEPPESEN

PUEBLA, MEXICO

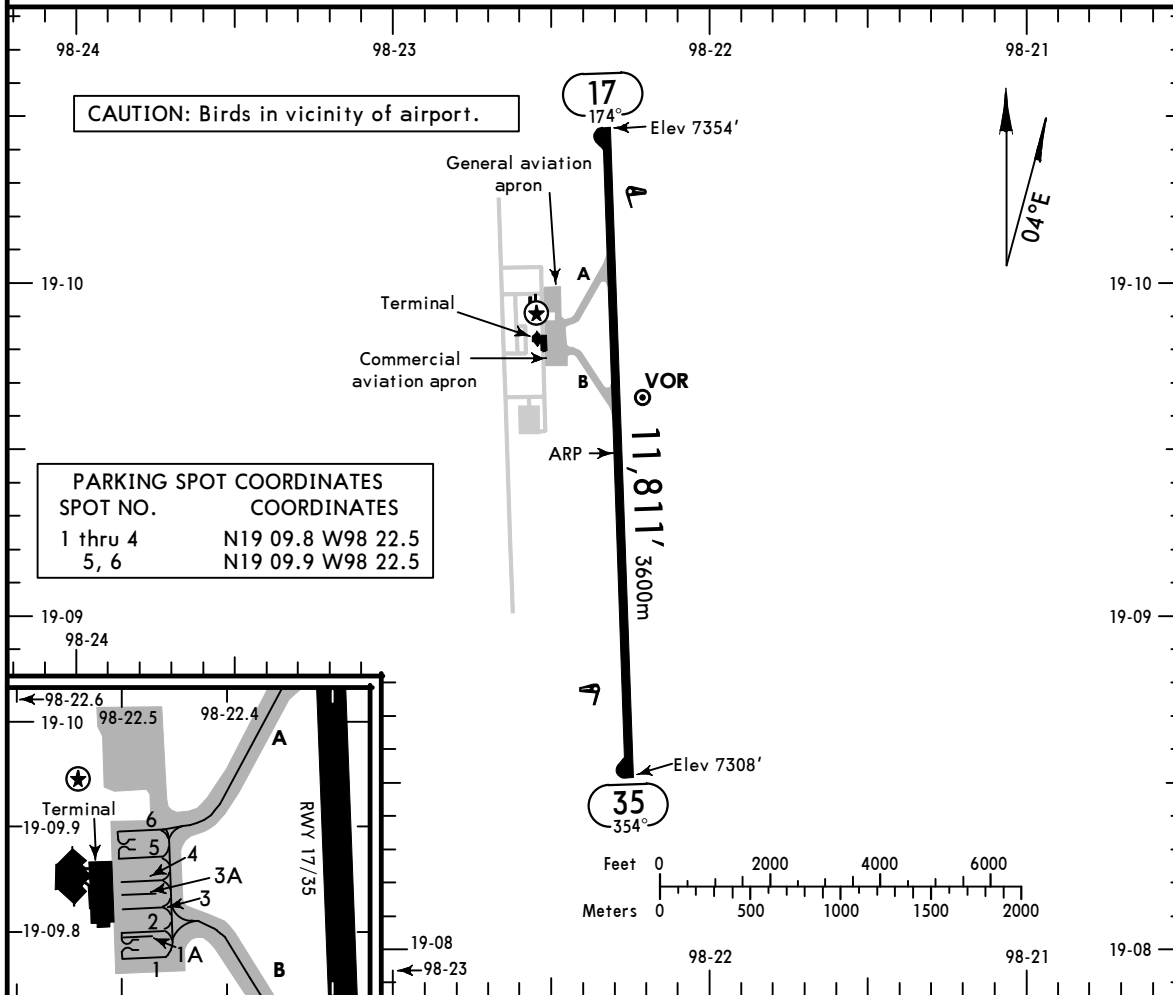
4 AUG 23

(10-9)

Eff 10 Aug

HERMANOS SERDAN INTL

*PUEBLA Tower 118.2



ADDITIONAL RUNWAY INFORMATION

RWY	USABLE LENGTHS	WIDTH
17 35	HIRL REIL PAPI-L (angle 3.0°)	148' 45m

Eng	TAKE-OFF	FOR FILING AS ALTERNATE
	All Rwys	
1 & 2	1	800-2
3 & 4	1/2	

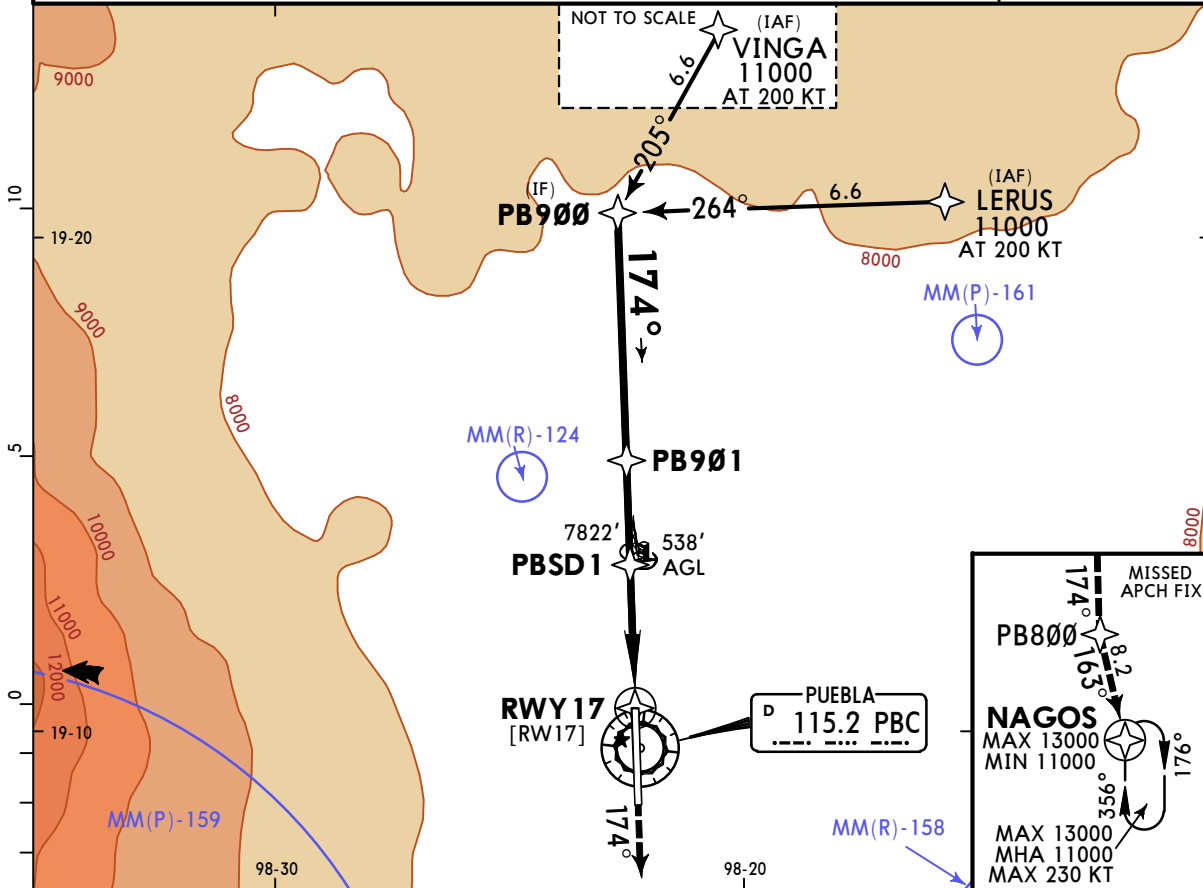
CHANGES: Parking inset added, buildings.

MMPB/PBC
HERMANOS SERDAN INTL

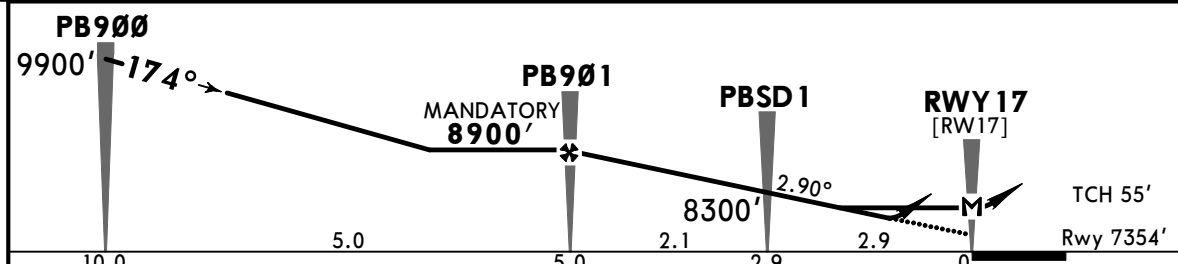
JEPESEN
28 OCT 22 **12-1** Eff 3 Nov

PUEBLA, MEXICO
RNP Rwy 17

*MEXICO Approach (R) 119.25		*PUEBLA Approach 127.0		*PUEBLA Tower 118.2	
RNAV	Final Apch Crs 174°	PB901 MANDATORY 8900' (1546')	LNAV/VNAV DA(H) 7700' (346')	Apt Elev 7361' Rwy 7354'	
MISSED APCH: Climb on course 174° to PB800 and proceed on missed approach track to NAGOS and continue according to ATC instructions.					
RNP Apch	Alt Set: IN (MB on req)	Trans level: FL 195	Trans alt: 18500'		
GNS required					



DIST to THR	2.0	1.0
ALTITUDE	8020'	7710'



Gnd speed-Kts	70	90	100	120	140	160	REIL PAPI-L	↑ on course	174°	PB800
Descent Angle 2.90°	359	462	513	616	718	821				
MAP at RWY 17										
PBSD1 to MAP	2.9	2:29	1:56	1:44	1:27	1:15	1:05			

STRAIGHT-IN LANDING RWY 17				CIRCLE-TO-LAND	
LNAV/VNAV DA(H) 7700' (346')		LNAV MDA(H) 7800' (446')		Max Kts	MDA(H)
A	1	1	1 3/8	90	8000' (639') - 1
B				120	8160' (799') - 2 1/4
C				140	8360' (999') - 3
D				165	

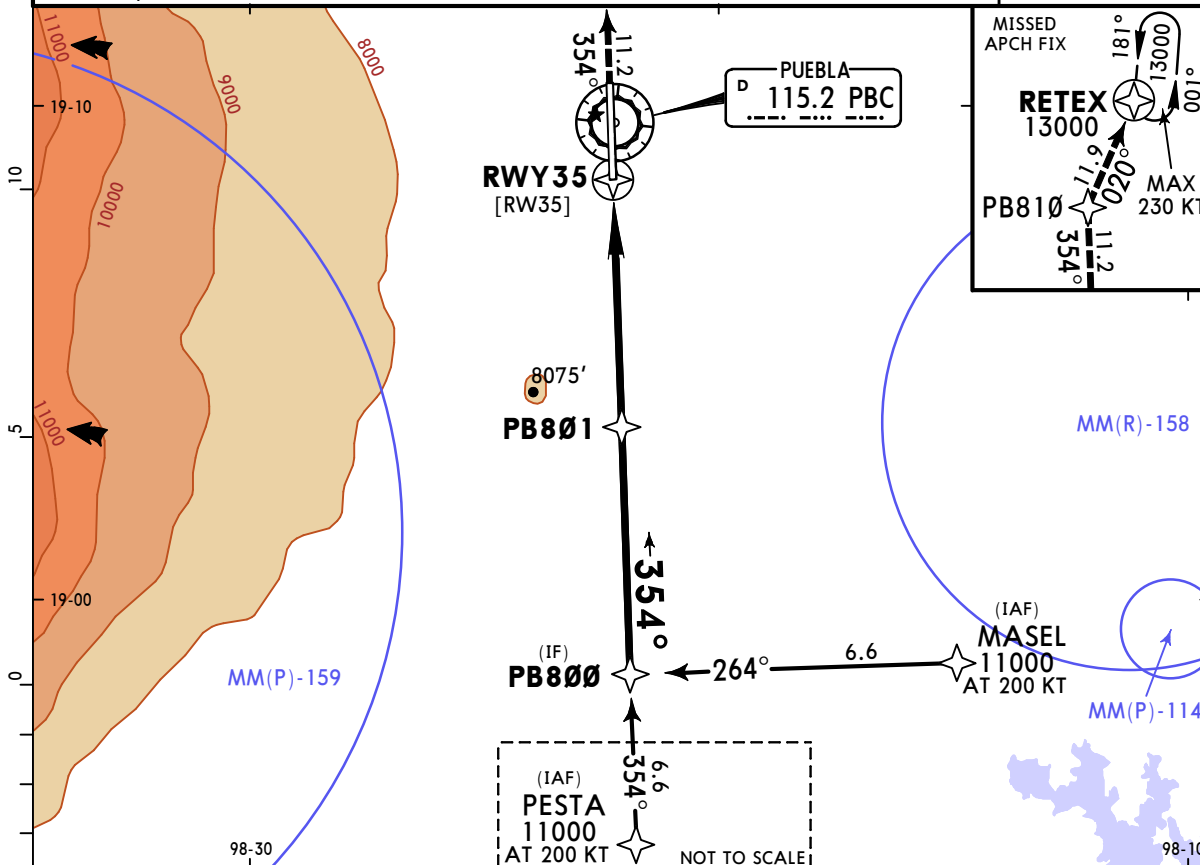
CHANGES: Note removed.

MMPB/PBC
HERMANOS SERDAN INTL

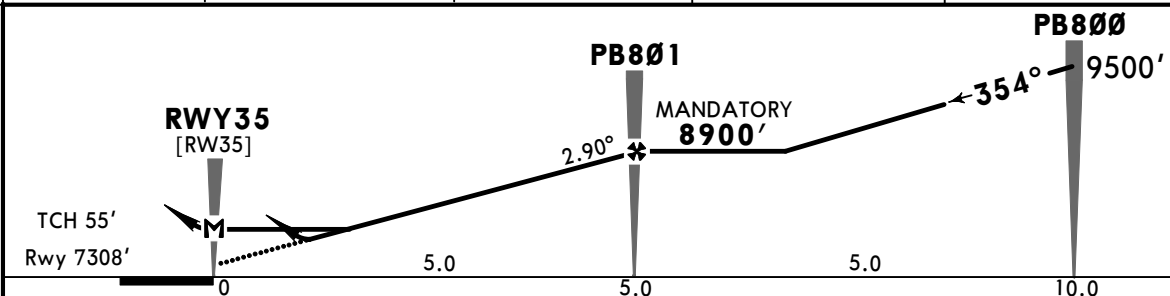
JEPPESSEN
28 OCT 22 **(12-2)** Eff 3 Nov

PUEBLA, MEXICO
RNP Rwy 35

*MEXICO Approach (R)		*PUEBLA Approach		*PUEBLA Tower	
119.25		127.0		118.2	
RNAV	Final Apch Crs 354°	PB801 MANDATORY 8900' (1592')	LNAV/VNAV DA(H) 7600' (292')	Apt Elev 7361' Rwy 7308'	
MISSED APCH: Climb on course 354° to PB810 and proceed on missed approach track to RETEX and continue on holding pattern.					
RNP Apch	Alt Set: IN (MB on req)	Trans level: FL 195	Trans alt: 18500'		
GNSS required					MSA PBC VOR



DIST to THR	1.0	2.0	3.0	4.0
ALTITUDE	7670'	7980'	8280'	8590'



Gnd speed-Kts	70	90	100	120	140	160	REIL PAPI-L	↑ on 354° course	PB810
Descent Angle 2.90°	359	462	513	616	718	821			
MAP at RWY35									
FAF to MAP	5.0	4:17	3:20	3:00	2:30	2:09	1:53		

STRAIGHT-IN LANDING RWY35			CIRCLE-TO-LAND	
LNAV/VNAV	LNAV	Max Kts	MDA(H)	
DA(H) 7600' (292')	MDA(H) 7800' (492')		90	8000' (639') - 1
A	1	120	8160' (799') - 2 1/4	
B		140	8360' (999') - 3	
C		165		
D				

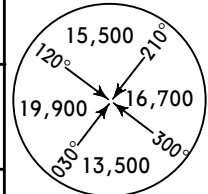
CHANGES: Note removed.

MMPB/PBC
HERMANOS SERDAN INTL

JEPPESSEN
19 AUG 22 **13-1**

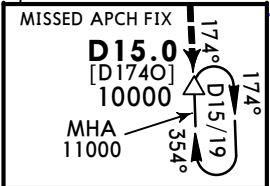
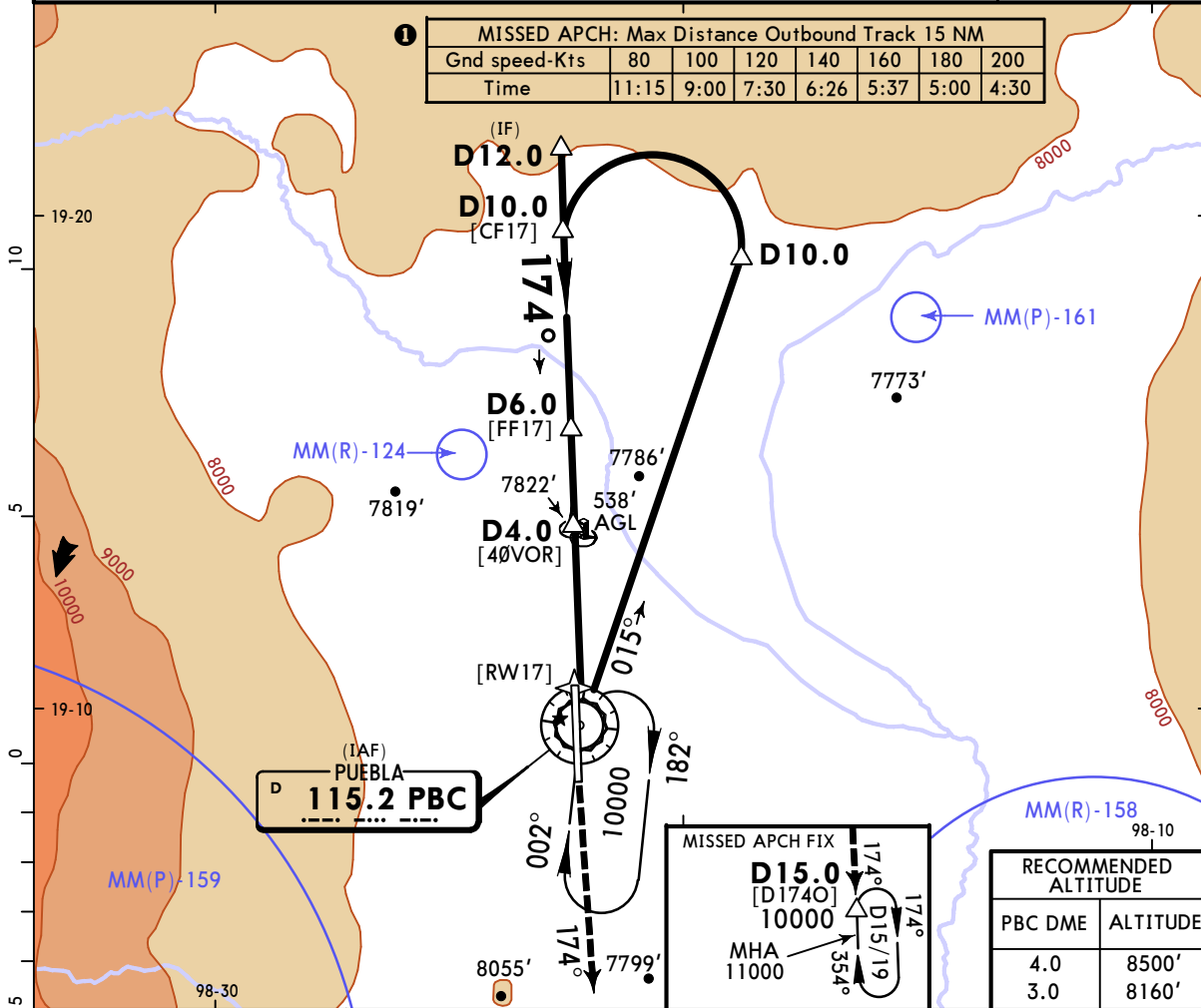
PUEBLA, MEXICO
VOR DME 1 Rwy 17

*MEXICO Approach (R) 119.25		*PUEBLA Approach 127.0		*PUEBLA Tower 118.2	
VOR PBC 115.2	Final Apch Crs 174°	D6.0 9300' (1946')	MDA(H) 8080' (726')	Apt Elev 7361' Rwy 7354'	
MISSED APCH: Climb outbound on PBC VOR R-174 to a minimum of 10000'. At D15.0 continue to climb in holding pattern to 11000' or in accordance to ATC instructions. 1					
Alt Set: MB (IN on req) Rwy Elev: 242 MB Trans level: FL 195 Trans alt: 18500' Do not use holding patterns at the same altitude simultaneously.					

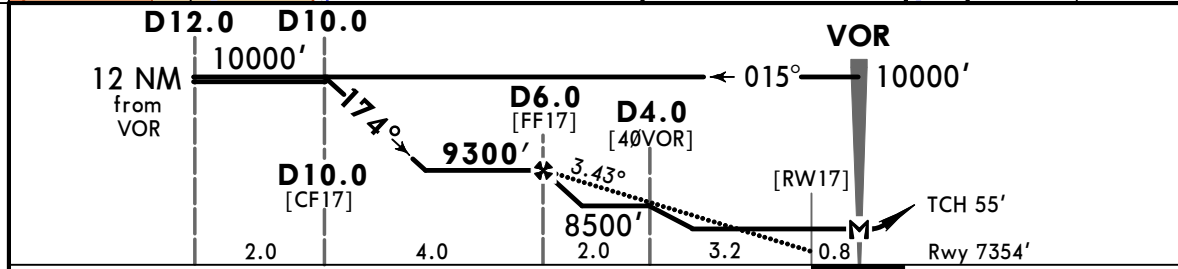


1 MISSED APCH: Max Distance Outbound Track 15 NM

Gnd speed-Kts	80	100	120	140	160	180	200
Time	11:15	9:00	7:30	6:26	5:37	5:00	4:30



RECOMMENDED ALTITUDE	
PBC DME	ALTITUDE
4.0	8500'
3.0	8160'



Gnd speed-Kts	70	90	100	120	140	160	REIL PAPI-L	10000' on PBC 115.2 R-174 D15.0
Descent Angle 3.43°	426	548	609	730	852	974		
MAP at VOR								
D4.0 to MAP	4.0	3:26	2:40	2:24	2:00	1:43	1:30	

STRAIGHT-IN LANDING RWY17		CIRCLE-TO-LAND	
A	MDA(H) 8080' (726')	Max Kts	MDA(H)
B	1	90	8120' (759') - 1
C	2	140	8120' (759') - 2 1/4
D	2 1/4	165	8120' (759') - 2 1/2

CHANGES: Communications.

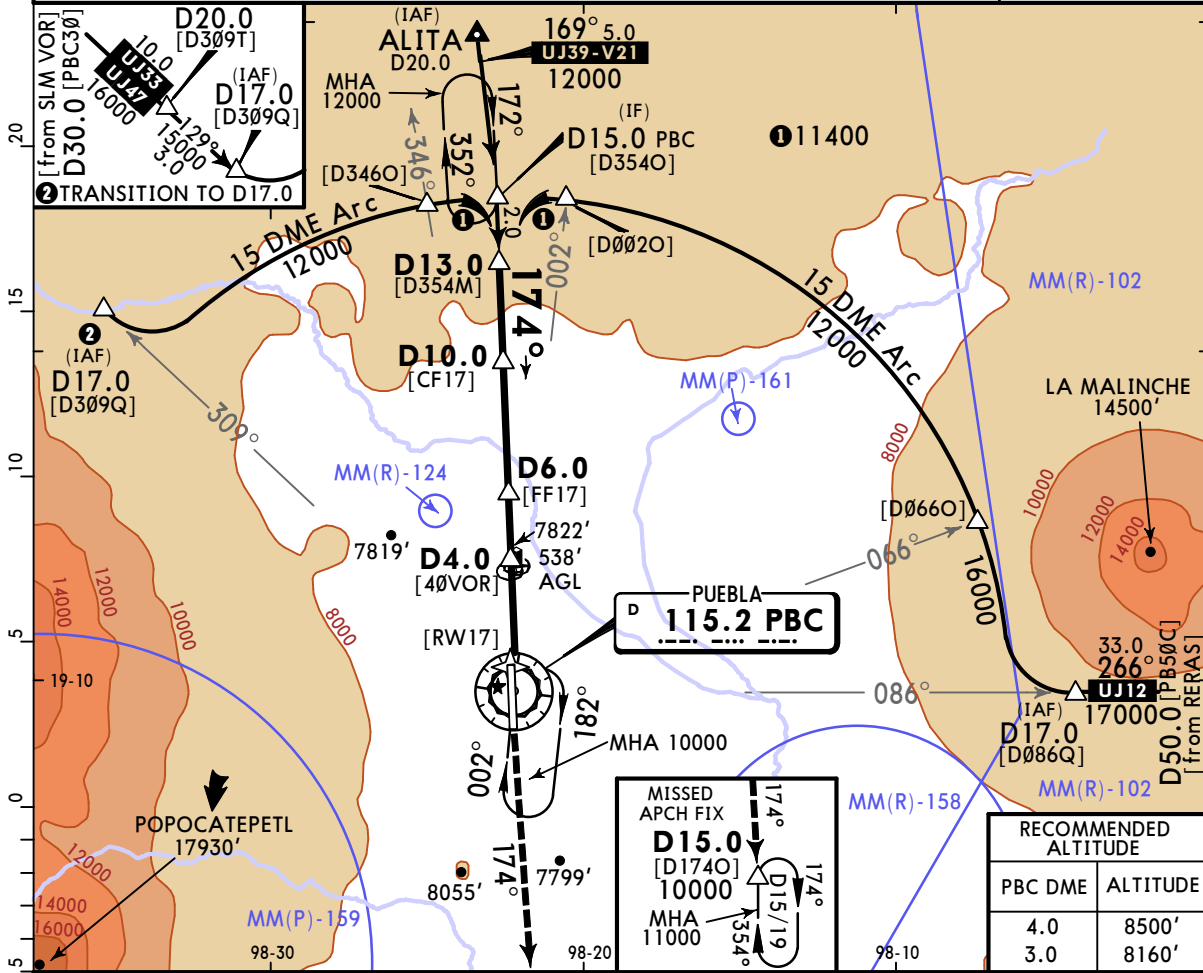
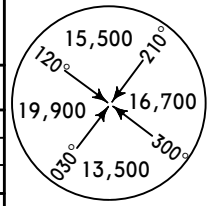
© JEPPESSEN, 2002, 2022. ALL RIGHTS RESERVED.

MMPB/PBC
HERMANOS SERDAN INTL

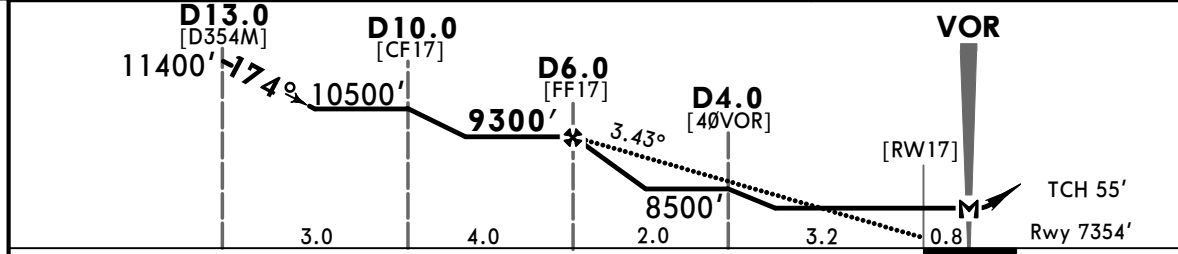
JEPPESSEN
19 AUG 22 **(13-2)**

PUEBLA, MEXICO
VOR DME 2 Rwy 17

*MEXICO Approach (R) 119.25		*PUEBLA Approach 127.0		*PUEBLA Tower 118.2																	
VOR PBC 115.2	Final Apch Crs 174°	D6.0 9300' (1946')	MDA(H) 8080' (726')	Apt Elev 7361' Rwy 7354'																	
MISSED APCH: Climb outbound on PBC VOR R-174 to a minimum of 10000'. At D15.0 continue to climb in holding pattern to 11000' or in accordance to ATC instructions.																					
MISSED APCH: Max Distance Outbound Track 15 NM <table border="1"> <tr> <td>Gnd speed-Kts</td> <td>80</td> <td>100</td> <td>120</td> <td>140</td> <td>160</td> <td>180</td> <td>200</td> </tr> <tr> <td>Time</td> <td>11:15</td> <td>9:00</td> <td>7:30</td> <td>6:26</td> <td>5:37</td> <td>5:00</td> <td>4:30</td> </tr> </table>						Gnd speed-Kts	80	100	120	140	160	180	200	Time	11:15	9:00	7:30	6:26	5:37	5:00	4:30
Gnd speed-Kts	80	100	120	140	160	180	200														
Time	11:15	9:00	7:30	6:26	5:37	5:00	4:30														
Alt Set: MB (IN on req) Rwy Elev: 242 MB Trans level: FL 195 Trans alt: 18500'																					
Do not use holding patterns at the same altitude simultaneously.																					



RECOMMENDED ALTITUDE	
PBC DME	ALTITUDE
4.0	8500'
3.0	8160'



Gnd speed-Kts	70	90	100	120	140	160	REIL PAPI-L	10000'	PBC	D15.0
Descent Angle 3.43°	426	548	609	730	852	974				
MAP at VOR										
D4.0 to MAP	4.0	3:26	2:40	2:24	2:00	1:43	1:30			

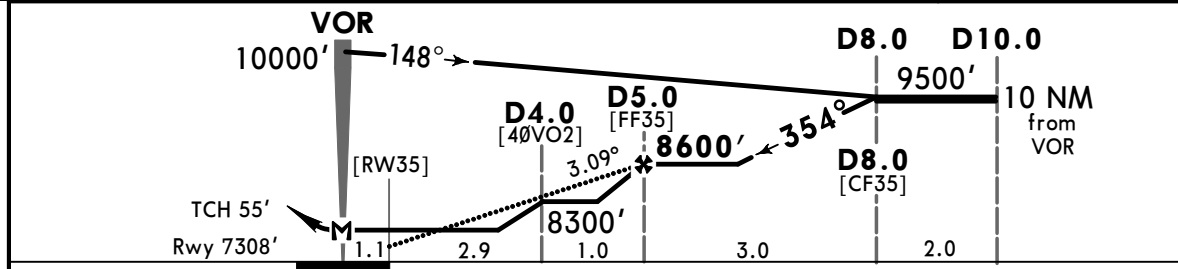
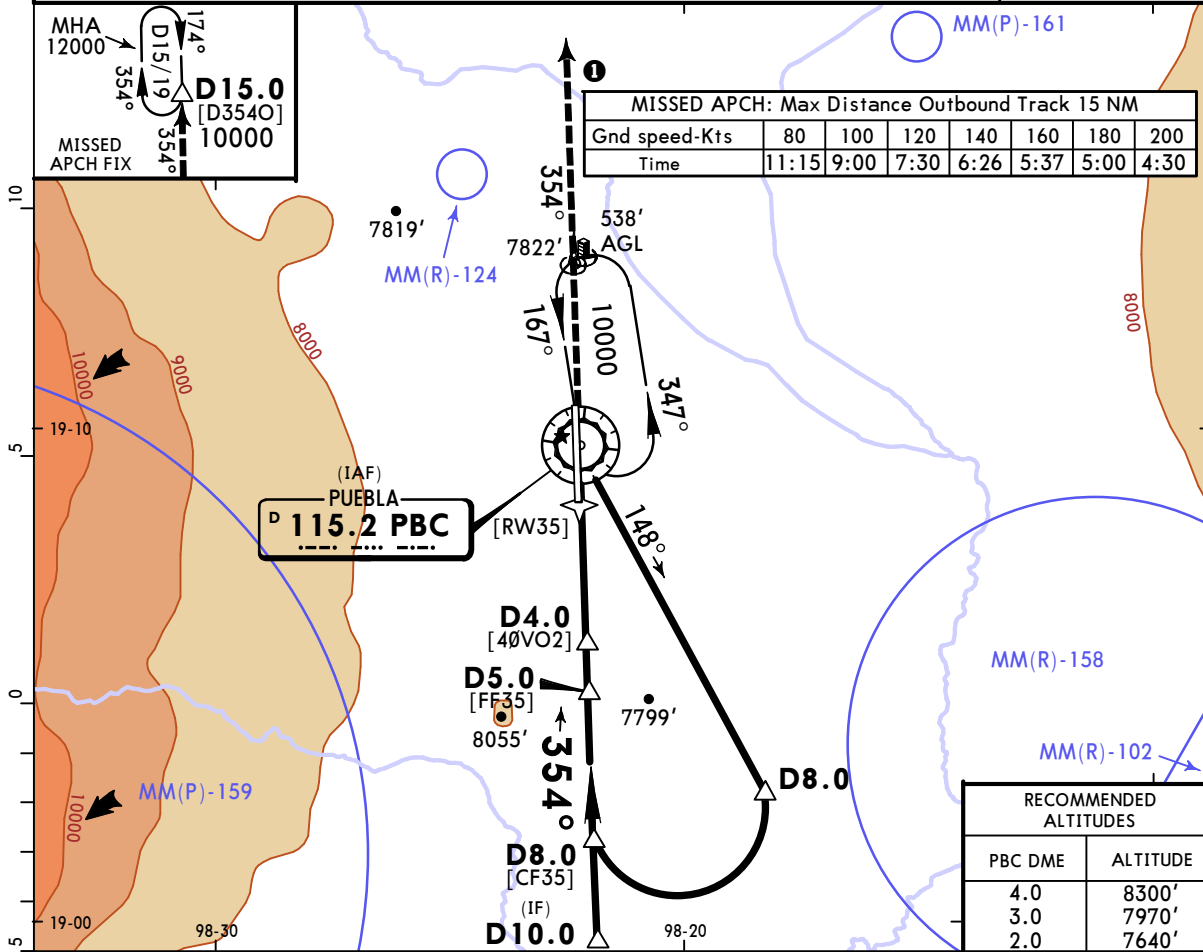
STRAIGHT-IN LANDING RWY 17			CIRCLE-TO-LAND		
MDA(H) 8080' (726')			MDA(H)		
A			Max Kts		
B	1		90	8120' (759') -1	
C	2		140	8120' (759') -2 1/4	
D	2 1/4		165	8120' (759') -2 1/2	

MMPB/PBC
HERMANOS SERDAN INTL

JEPPESSEN
19 AUG 22 (13-3)

PUEBLA, MEXICO
VOR DME 1 Rwy 35

*MEXICO Approach (R)		*PUEBLA Approach		*PUEBLA Tower	
119.25		127.0		118.2	
VOR PBC 115.2	Final Apch Crs 354°	D5.0 8600' (1292')	MDA(H) 7900' (592')	Apt Elev 7361' Rwy 7308'	
MISSED APCH: Climb outbound on PBC VOR R-354 to a minimum of 10000'. At D15.0 continue to climb in holding pattern to 12000' or in accordance to ATC instructions.					
Alt Set: MB (IN on req) Rwy Elev: 241 MB Trans level: FL 195 Trans alt: 18500'					
Do not use holding patterns at the same altitude simultaneously.					



Gnd speed-Kts	70	90	100	120	140	160			
Descent Angle 3.09°	383	492	547	656	765	875			
MAP at VOR									
D4.0 to MAP	4.0	3:26	2:40	2:24	2:00	1:43	1:30		

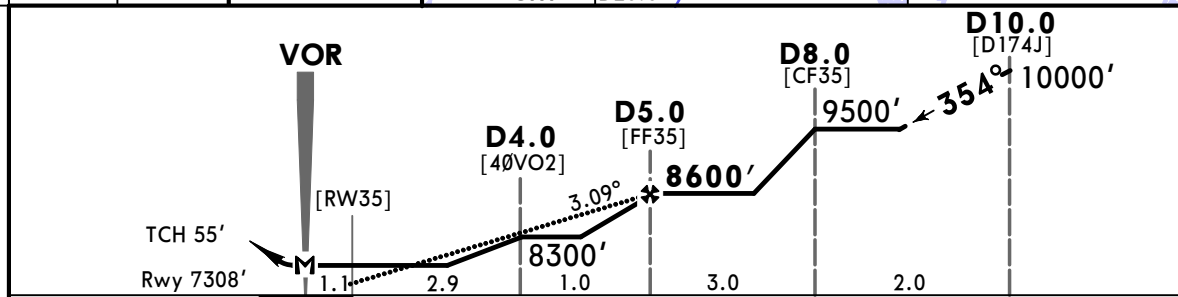
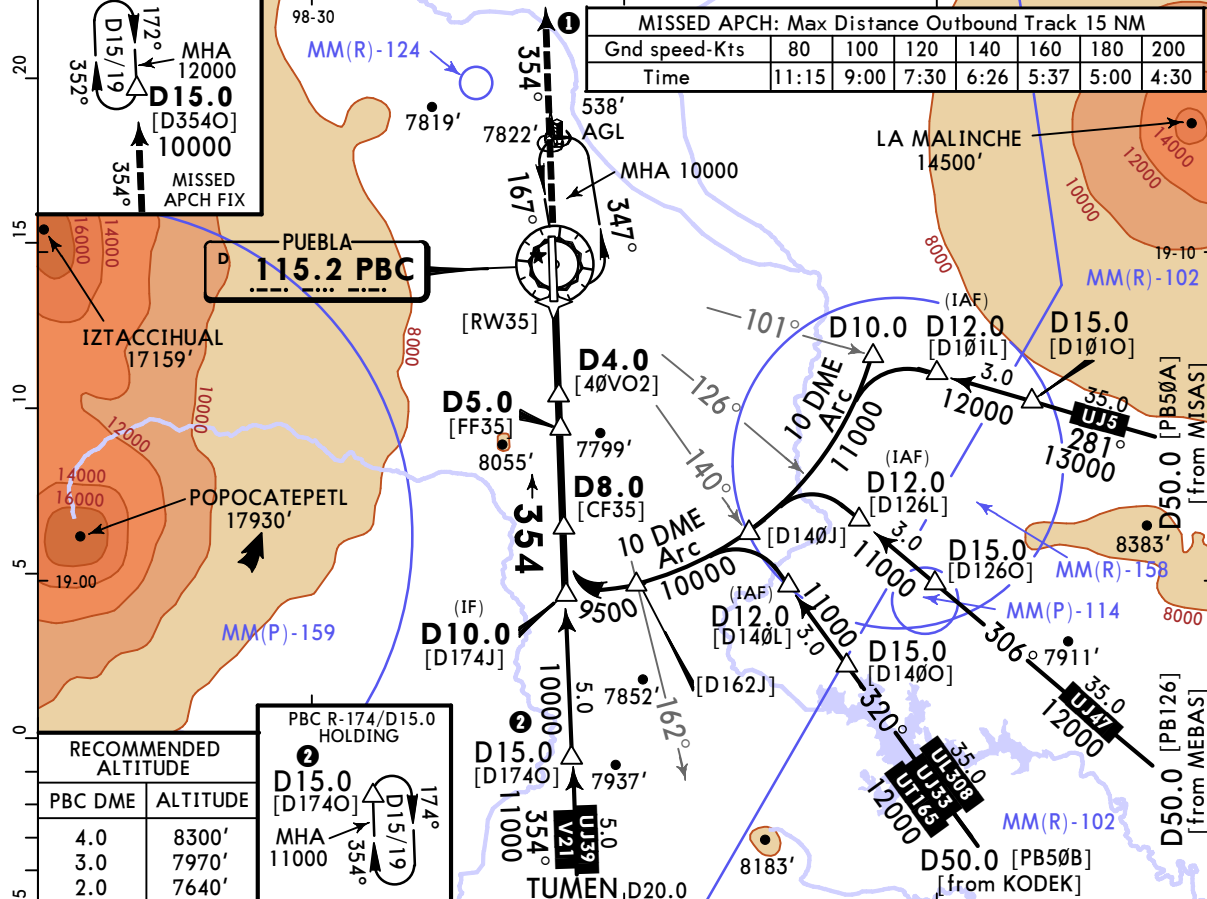
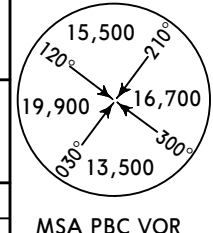
STRAIGHT-IN LANDING RWY35			CIRCLE-TO-LAND		
MDA(H) 7900' (592')			Max Kts		
A	1		90	8120' (759') - 1	
B	1 1/2		120	8120' (759') - 2 1/4	
C	1 3/4		140	8120' (759') - 2 1/2	
D	1 3/4		165	8120' (759') - 2 1/2	

MMPB/PBC
HERMANOS SERDAN INTL

JEPPESSEN
19 AUG 22 (13-4)

PUEBLA, MEXICO
VOR DME 2 Rwy 35

*MEXICO Approach (R) 119.25		*PUEBLA Approach 127.0		*PUEBLA Tower 118.2	
VOR PBC 115.2	Final Apch Crs 354°	D5.0 8600' (1292')	MDA(H) 7900' (592')	Apt Elev 7361' Rwy 7308'	
MISSED APCH: Climb outbound on PBC VOR R-354 to a minimum of 10000'. At D15.0 continue to climb in holding pattern to 12000' or in accordance to ATC instructions.					
Alt Set: MB (IN on req) Rwy Elev: 241 MB Trans level: FL 195 Trans alt: 18500'					
Do not use holding patterns at the same altitude simultaneously.					



Gnd speed-Kts	70	90	100	120	140	160
Descent Angle 3.09°	383	492	547	656	765	875
MAP at VOR						
D4.0 to MAP	4.0	3:26	2:40	2:24	2:00	1:43

STRAIGHT-IN LANDING RWY35		CIRCLE-TO-LAND	
MDA(H) 7900' (592')		Max Kts	MDA(H)
A	1	90	8120' (759') - 1
B	1 1/2	120	8120' (759') - 2 1/4
C	1 3/4	140	8120' (759') - 2 1/2
D		165	