

General Information

Location: MINATITLAN MEX
ICAO/IATA: MMMT / MTT
Lat/Long: N18° 06.2', W094° 34.8'
Elevation: 36 ft

Airport Use: Public
Daylight Savings: Not Observed
UTC Conversion: +6:00 = UTC
Magnetic Variation: 4.0° E

Fuel Types: 100 Octane (LL), Jet A
Customs: Yes
Airport Type: IFR
Landing Fee: No
Control Tower: Yes
Jet Start Unit: No
LLWS Alert: No
Beacon: Yes

Sunrise: 1215 Z
Sunset: 2350 Z

Runway Information

Runway: 01
Length x Width: 6890 ft x 148 ft
Surface Type: asphalt
TDZ-Elev: 34 ft
Lighting: Edge, REIL

Runway: 19
Length x Width: 6890 ft x 148 ft
Surface Type: asphalt
TDZ-Elev: 21 ft
Lighting: Edge, REIL

Communication Information

Minatitlan Tower: 118.100

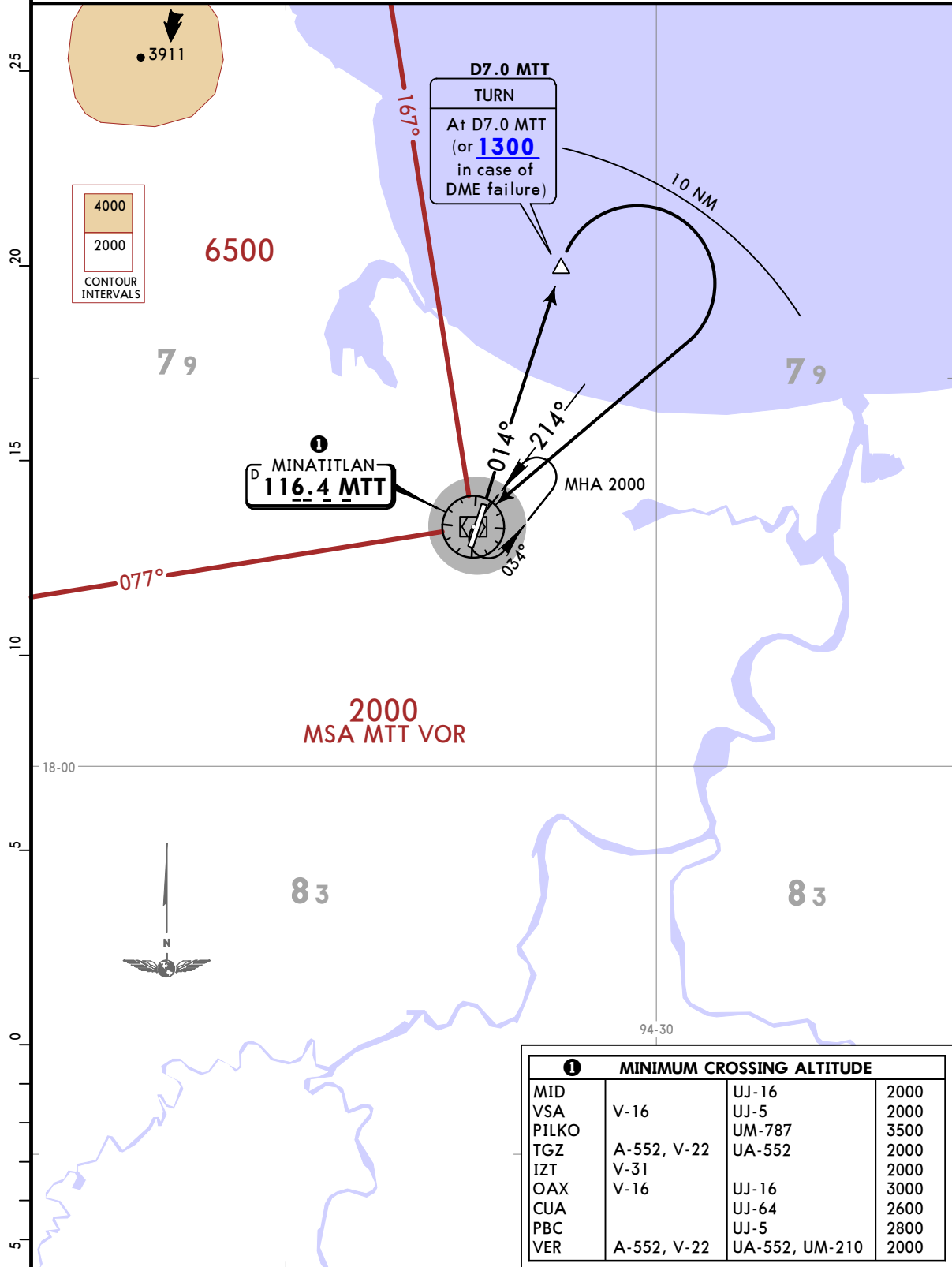
MMMT/MTT
MINATITLAN INTL

JEPPESEN
8 JUL 22 10-3 Eff 14 Jul

MINATITLAN, MEXICO
SID

Apt Elev 36	Trans alt: 18500
-----------------------	------------------

**MINATITLAN 3A DEPARTURE
(MTT3A)
(RWY 01)**



**MINATITLAN
116.4 MTT**

**D7.0 MTT
TURN**
At D7.0 MTT
(or **1300**
in case of
DME failure)

① MINIMUM CROSSING ALTITUDE			
MID		UJ-16	2000
VSA	V-16	UJ-5	2000
PILKO		UM-787	3500
TGZ	A-552, V-22	UA-552	2000
IZT	V-31		2000
OAX	V-16	UJ-16	3000
CUA		UJ-64	2600
PBC		UJ-5	2800
VER	A-552, V-22	UA-552, UM-210	2000

INITIAL CLIMB

Climb via MTT R014 to D7.0 MTT (or 1300 in case of DME failure). Turn RIGHT within 10 NM to MTT VOR and cross MTT VOR according to the MCA ① or ATC instructions.

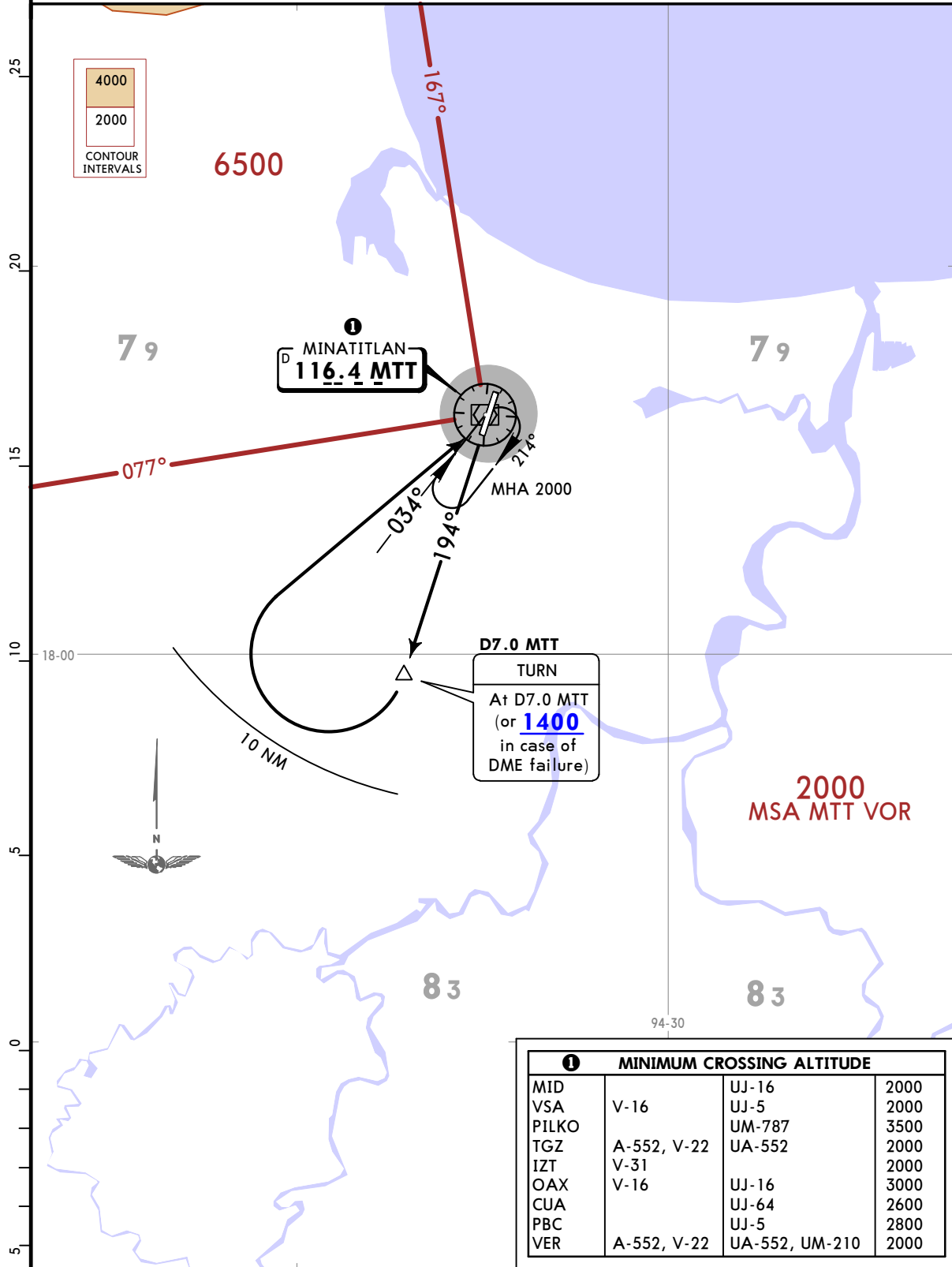
MMMT/MTT
MINATITLAN INTL

JEPPESEN
8 JUL 22 **10-3A** Eff 14 Jul

MINATITLAN, MEXICO
SID

Apt Elev 36	Trans alt: 18500
-----------------------	------------------

**MINATITLAN 3B DEPARTURE
(MTT3B)
(RWY 19)**



INITIAL CLIMB

Climb via MTT R194 to D7.0 MTT (or 1400 in case of DME failure). Turn RIGHT within 10 NM to MTT VOR and cross MTT VOR according to the MCA **1** or ATC instructions.

MMMT/MTT

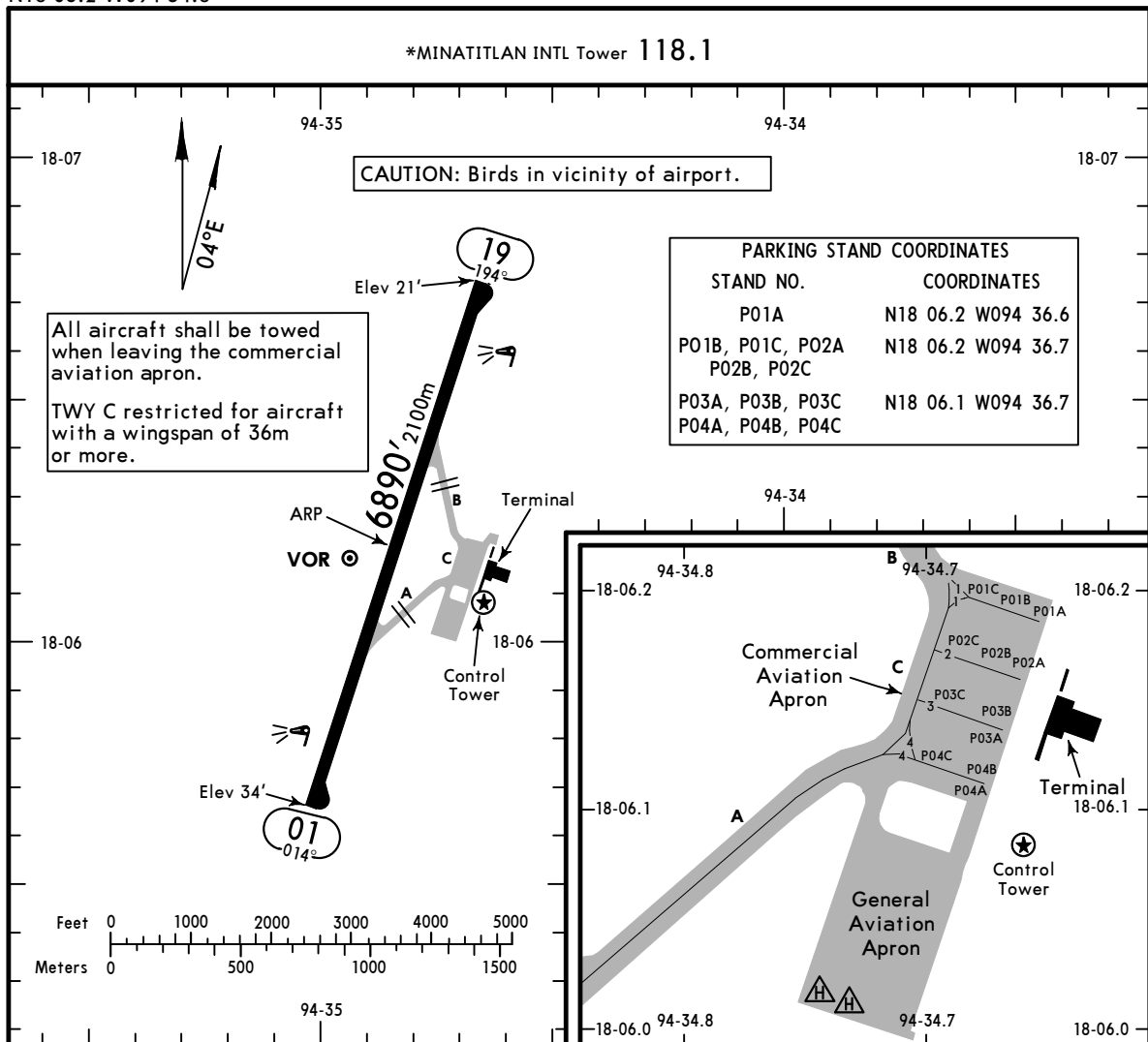
Apt Elev **36'**
N18 06.2 W094 34.8



8 JUL 22 **(10-9)** Eff 14 Jul

MINATITLAN, MEXICO

MINATITLAN INTL



ADDITIONAL RUNWAY INFORMATION

RWY		USABLE LENGTHS			WIDTH
		Threshold	Glide Slope	TAKE-OFF	
01 19	HIRL REIL PAPI-L (angle 3.0°)				148' 45m

TAKE-OFF		FOR FILING AS ALTERNATE	
All Rwys		800-2	
1 & 2 Eng	200-1		
3 & 4 Eng	200-1/2		

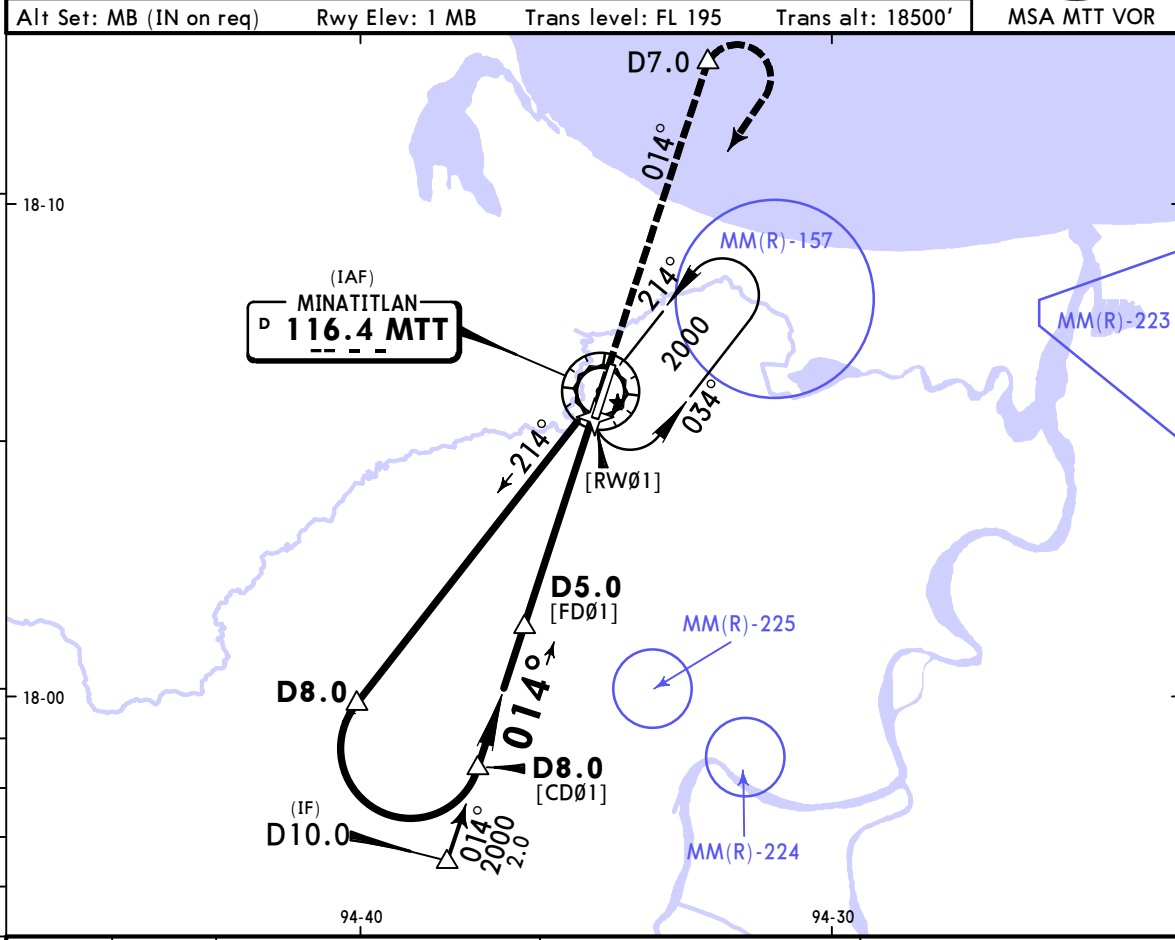
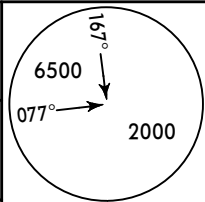
MMMT/MTT
MINATITLAN INTL

JEPESEN
8 JUL 22 **13-1** **Eff 14 Jul**

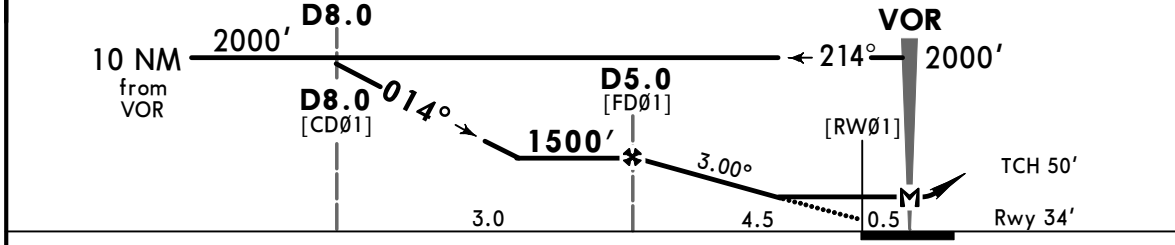
MINATITLAN, MEXICO
VOR DMÉ Rwy 01

*MINATITLAN INTL Tower 118.1					
BRIEFING STRIP™	VOR MTT	Final Apch Crs	D5.0	MDA(H)	Apt Elev 36' Rwy 34'
	116.4	014°	1500' (1466')	600' (566')	

MISSED APCH: Climb outbound on MTT VOR R-014 to D7.0, then turn RIGHT within 10 NM to MTT VOR at the minimum holding altitude.



VOR DMÉ	MTT DME	5.0	4.0	3.0
	ALTITUDE	1500'	1190'	870'



Gnd speed-Kts	70	90	100	120	140	160
Descent Angle 3.00°	372	478	531	637	743	849
MAP at VOR						
FAF to MAP	5.0	4:17	3:20	3:00	2:30	2:09
				1:53		

REIL PAPI-L **MTT on 116.4 D7.0 R-014**

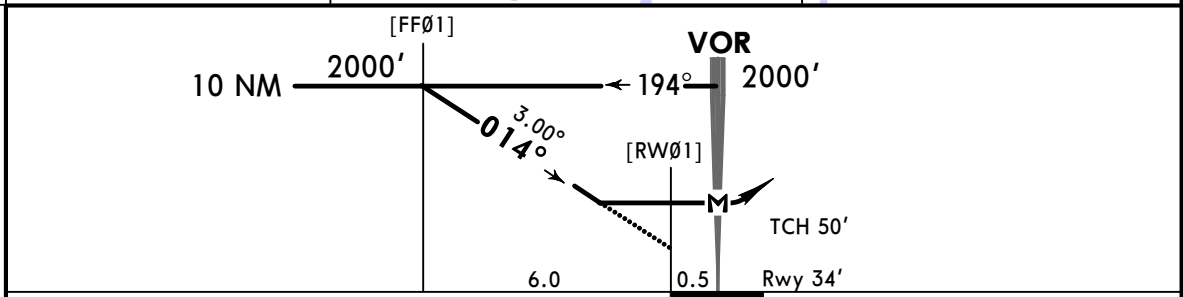
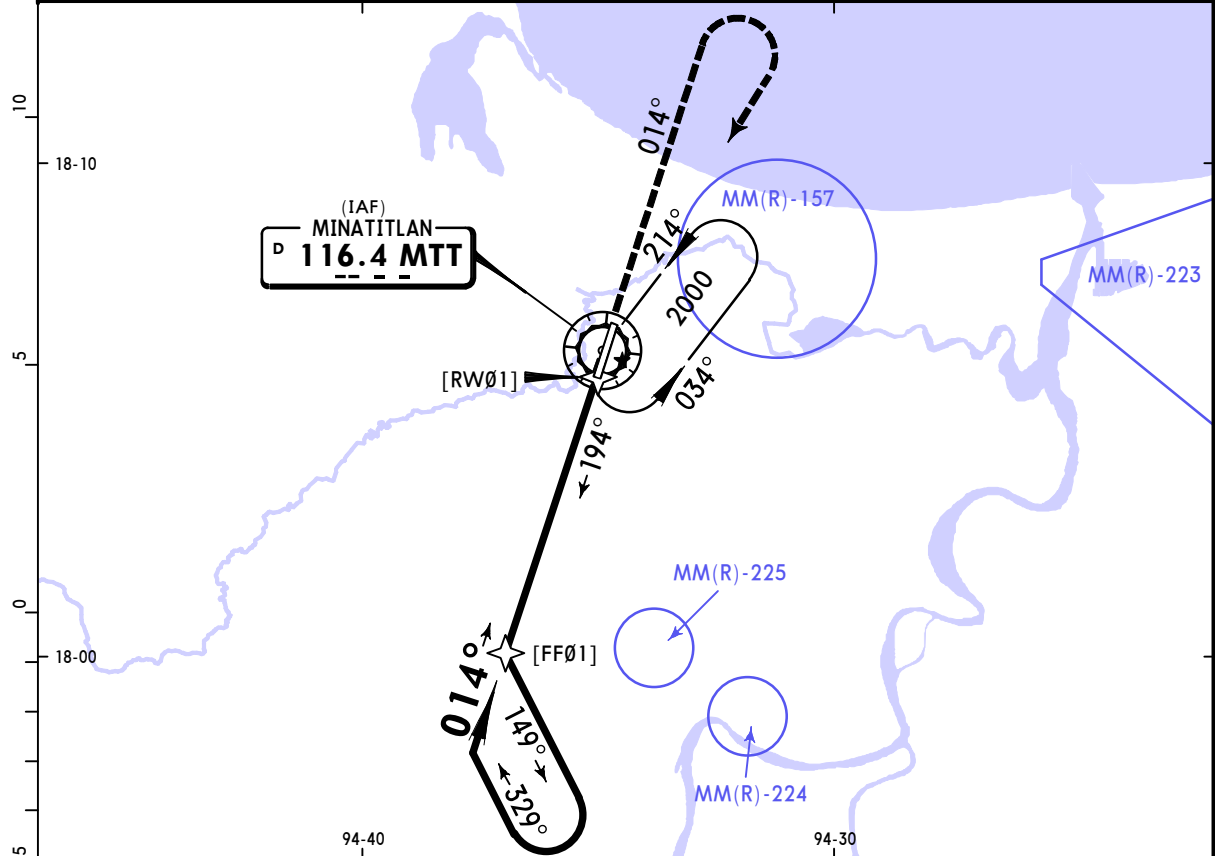
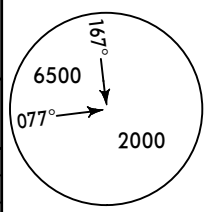
STRAIGHT-IN LANDING RWY 01		CIRCLE-TO-LAND	
MDA(H) 600' (566')		Max Kts	MDA(H)
A	1	90	660' (624') - 1
B		120	
C	1½	140	660' (624') - 1¾
D	1¾	165	680' (644') - 2

MMMT/MTT
MINATITLAN INTL

JEPPESSEN
8 JUL 22 **13-2** Eff 14 Jul

MINATITLAN, MEXICO
VOR Rwy 01

*MINATITLAN INTL Tower 118.1							
BRIEFING STRIP™	VOR MTT 116.4	Final Apch Crs 014°	No FAF	MDA(H) 700' (666')	Apt Elev 36' Rwy 34'		
	MISSED APCH: Climb outbound on MTT VOR R-014, then turn RIGHT within 10 NM to MTT VOR at the minimum holding altitude.						
MAX TIME TO TURN							
Gnd speed-Kts	80	100	120	140	160	180	200
7 NM to turn	5:15	4:12	3:30	3:00	2:38	2:20	2:06
Alt Set: MB (IN on req)	Rwy Elev: 1 MB	Trans level: FL 195	Trans alt: 18500'		MSA MTT VOR		



Gnd speed-Kts	70	90	100	120	140	160	REIL PAPI-L	↑ on 116.4 R-014
Descent Angle 3.00°	372	478	531	637	743	849		
MAP at VOR								

STRAIGHT-IN LANDING RWY 01			CIRCLE-TO-LAND		
MDA(H) 700' (666')			MDA(H)		
A	1	Max Kts	MDA(H)		
B		90	700'(664') - 1		
C	1 3/4	140	700'(664') - 1 3/4		
D	2	165	700'(664') - 2		

MMMT/MTT
MINATITLAN INTL

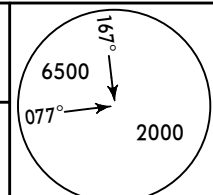
JEPESEN
8 JUL 22 **(13-3)** Eff 14 Jul

MINATITLAN, MEXICO
VOR DME Rwy 19

*MINATITLAN INTL Tower 118.1

BRIEFING STRIP™

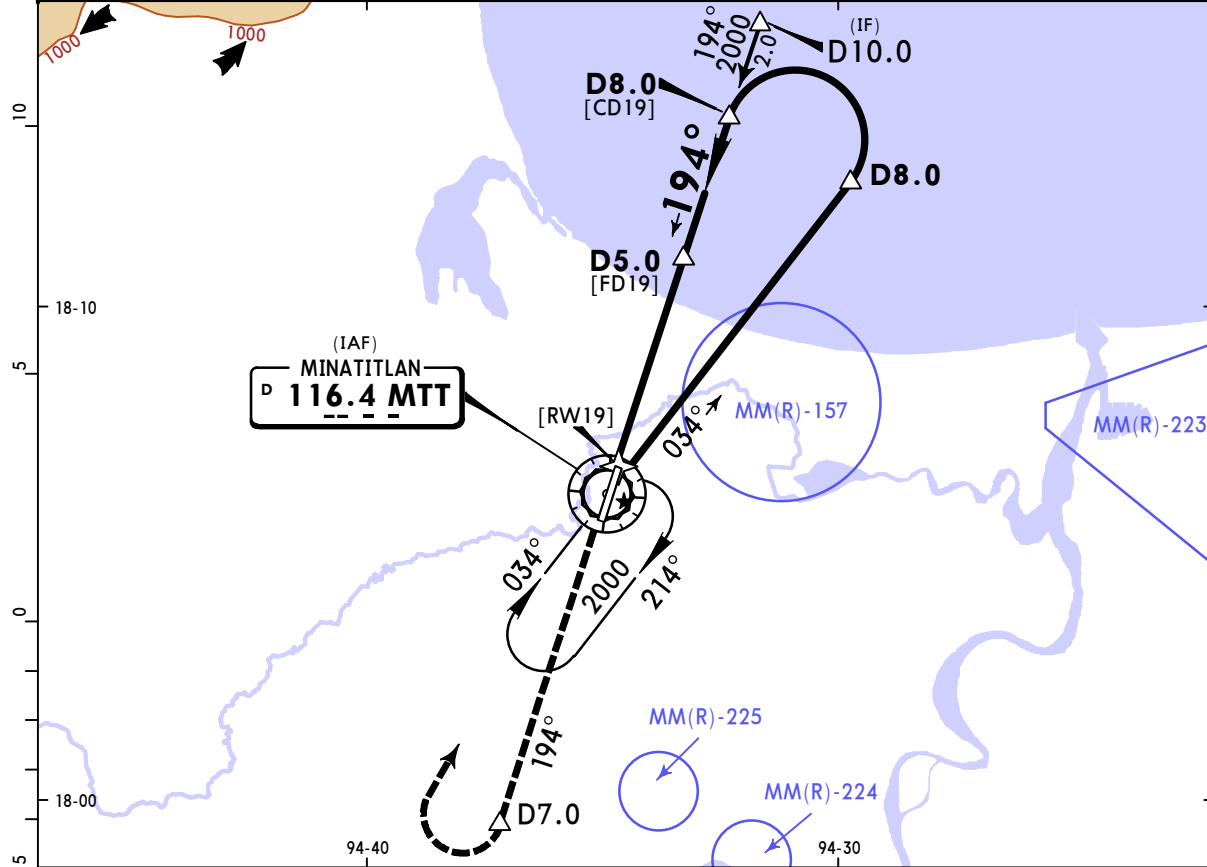
VOR MTT 116.4	Final Apch Crs 194°	D5.0 1500' (1479')	MDA(H) 600' (579')	Apt Elev 36' Rwy 21'
----------------------------	----------------------------------	------------------------------	------------------------------	-------------------------



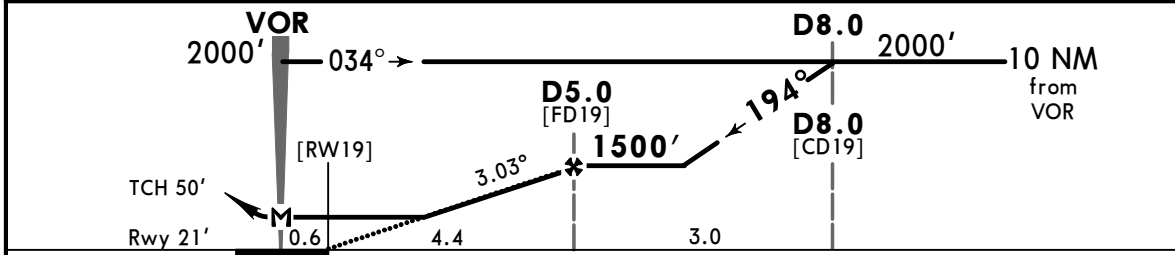
MISSED APCH: Climb outbound on MTT VOR R-194 to D7.0, then turn RIGHT within 10 NM to MTT VOR at the minimum holding altitude.

Alt Set: MB (IN on req) Rwy Elev: 1 MB Trans level: FL 195 Trans alt: 18500'

MSA MTT VOR



VOR DME	MTT DME	3.0	4.0	5.0
	ALTITUDE	850'	1180'	1500'



Gnd speed-Kts	70	90	100	120	140	160
Descent Angle 3.03°	375	482	536	643	750	858
MAP at VOR						
FAF to MAP	5.0	4:17	3:20	3:00	2:30	2:09
					1:53	

REIL PAPI-L
↑ on **116.4** **D7.0**
R-194

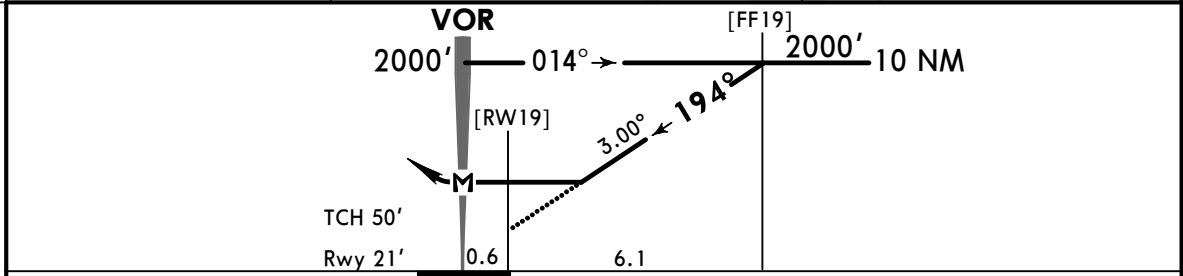
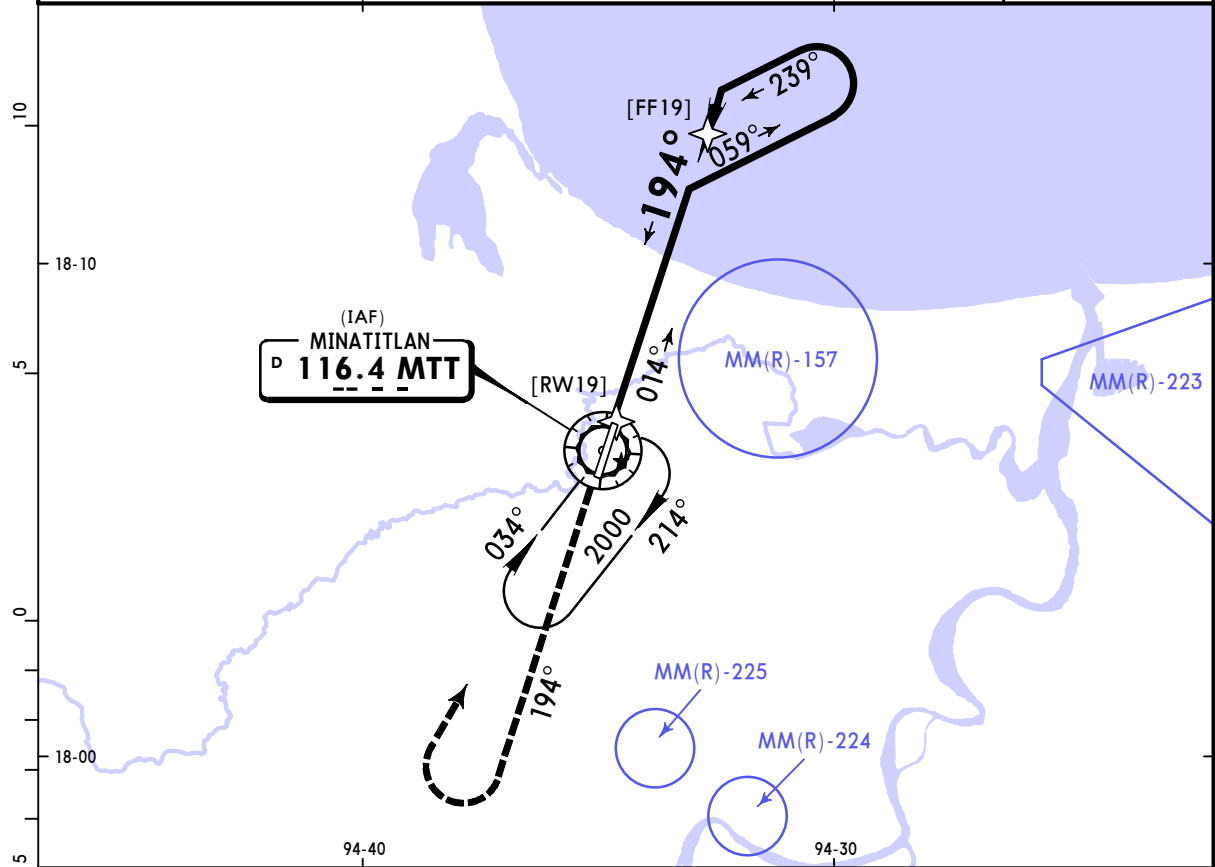
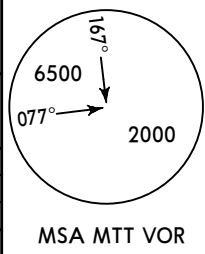
STRAIGHT-IN LANDING RWY 19		CIRCLE-TO-LAND	
MDA(H) 600' (579')		MDA(H)	
A		90	660' (624') -1
B	1	120	660' (624') -1
C	1½	140	660' (624') -1¾
D	1¾	165	680' (644') -2

MMMT/MTT
MINATITLAN INTL

JEPPESSEN
8 JUL 22 **13-4** Eff 14 Jul

MINATITLAN, MEXICO
VOR Rwy 19

*MINATITLAN INTL Tower 118.1																												
BRIEFING STRIP™	VOR MTT 116.4	Final Apch Crs 194°	No FAF	MDA(H) 660' (639')	Apt Elev 36' Rwy 21'																							
	MISSED APCH: Climb outbound on MTT VOR R-194, then turn RIGHT within 10 NM to MTT VOR at the minimum holding altitude.																											
	<table border="1"> <tr><th colspan="8">MAX TIME TO TURN</th></tr> <tr><th>Gnd speed-Kts</th><td>80</td><td>100</td><td>120</td><td>140</td><td>160</td><td>180</td><td>200</td></tr> <tr><th>7 NM to turn</th><td>5:15</td><td>4:12</td><td>3:30</td><td>3:00</td><td>2:38</td><td>2:20</td><td>2:06</td></tr> </table>					MAX TIME TO TURN								Gnd speed-Kts	80	100	120	140	160	180	200	7 NM to turn	5:15	4:12	3:30	3:00	2:38	2:20
MAX TIME TO TURN																												
Gnd speed-Kts	80	100	120	140	160	180	200																					
7 NM to turn	5:15	4:12	3:30	3:00	2:38	2:20	2:06																					
Alt Set: MB (IN on req)		Rwy Elev: 1 MB	Trans level: FL 195	Trans alt: 18500'																								



Gnd speed-Kts	70	90	100	120	140	160	REIL PAPI-L	↑ on 116.4 R-194
Descent Angle 3.00°	372	478	531	637	743	849		
MAP at VOR								

STRAIGHT-IN LANDING RWY 19			CIRCLE-TO-LAND		
MDA(H) 660' (639')					
		Max Kts	MDA(H)		
A	1	90	660' (624') - 1		
B		120			
C	1¾	140	660' (624') - 1¾		
D	2	165	680' (644') - 2		