

General Information

Location: TIJUANA MEX
ICAO/IATA: MMTJ / TIJ
Lat/Long: N32° 32.5', W116° 58.2'
Elevation: 487 ft

Airport Use: Public
Daylight Savings: Observed
UTC Conversion: +8:00 = UTC
Magnetic Variation: 12.0° E
Sectional Chart: Los Angeles

Fuel Types: 100-130 Octane, Jet A-1
Customs: Yes
Airport Type: IFR
Landing Fee: No
Control Tower: Yes
Jet Start Unit: No
LLWS Alert: No
Beacon: Yes

Sunrise: 1332 Z
Sunset: 0154 Z

Runway Information

Runway: 09
Length x Width: 9715 ft x 148 ft
Surface Type: asphalt
TDZ-Elev: 487 ft
Lighting: Edge, ALS, Centerline, TDZ

Runway: 27
Length x Width: 9715 ft x 148 ft
Surface Type: asphalt
TDZ-Elev: 466 ft
Lighting: Edge, ALS, Centerline

Communication Information

ATIS: 127.900
Tijuana Tower: 118.100
Tijuana Clearance Delivery: 122.350
Tijuana Approach: 119.500

Tijuana Approach: 120.300

Tijuana Radio: 132.100 Flight Info Service

Tijuana Information: 132.100 AFIS

TMA

JEPPESSEN

15 SEP 23

10-1B

TIJUANA, MEXICO
Gen Abelardo L Rodriguez Intl

*ATIS
127.9

*TIJUANA Approach
119.5 120.3

SPEED RESTRICTIONS WITHIN MEXICO AIRSPACE

Maximum IAS unless otherwise depicted or authorized by ATC

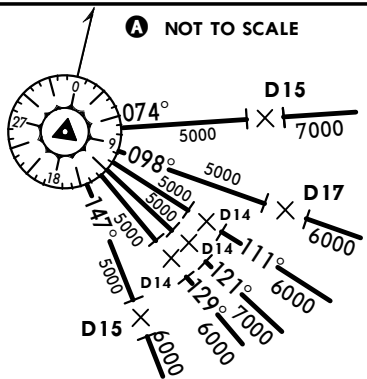
Below 3000' AGL within 10NM of any airport.....200 KTS
Below 10,000' MSL within Mexico Airspace.....250 KTS
Below 10,000' AGL within 30NM of any airport.....250 KTS

WITHIN TIJUANA TMA

At or below 3500' MSL within 10NM of TIJ VORDME.....200 KTS
At or below 10,500' MSL within 30NM of TIJ VORDME.....250 KTS

WITHIN MEXICALI TMA

At or below 3100' MSL within 10NM of MXL VORDME.....200 KTS
At or below 10,100' MSL within 25NM of MXL VORDME.....250 KTS

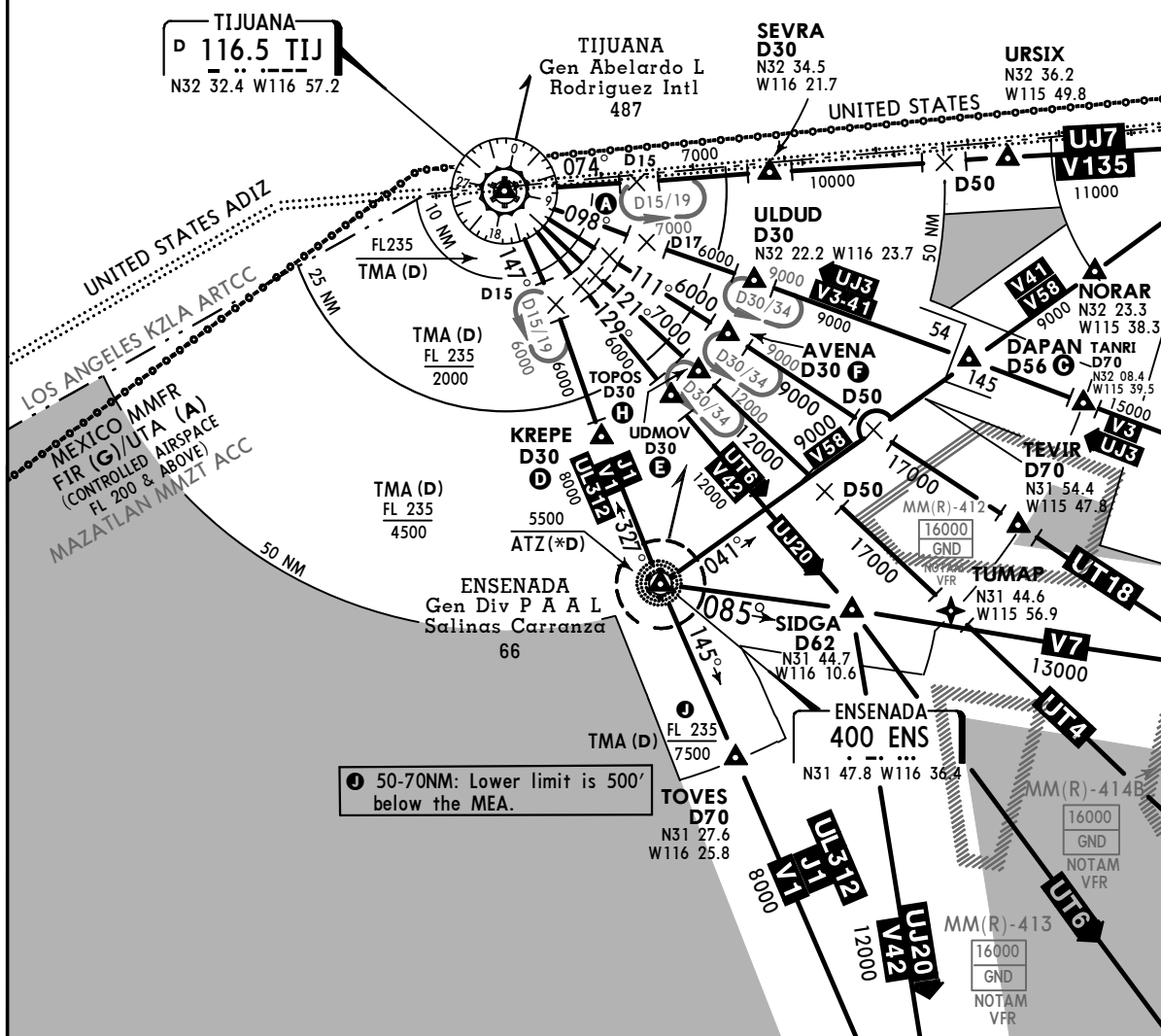


TIJUANA TMA (D)
UNCL'L BELOW
4500' 25 NM-50 NM
2000' 10 NM-25 NM
GND 0 NM-10 NM

MEXICALI TMA (D)
UNCL'L BELOW
1500' 10 NM-25 NM
GND 0 NM-10 NM

- (C)** N32 13.3 W115 55.0
- (D)** N32 04.5 W116 44.1
- (E)** N32 12.0 W116 31.2
- (F)** N32 16.2 W116 27.3
- (H)** N32 09.1 W116 34.8

UL and UT routes within Mexico usable only for aircraft equipped with RNAV.



50-70NM: Lower limit is 500' below the MEA.

MMTJ/TIJ



TIJUANA, MEXICO

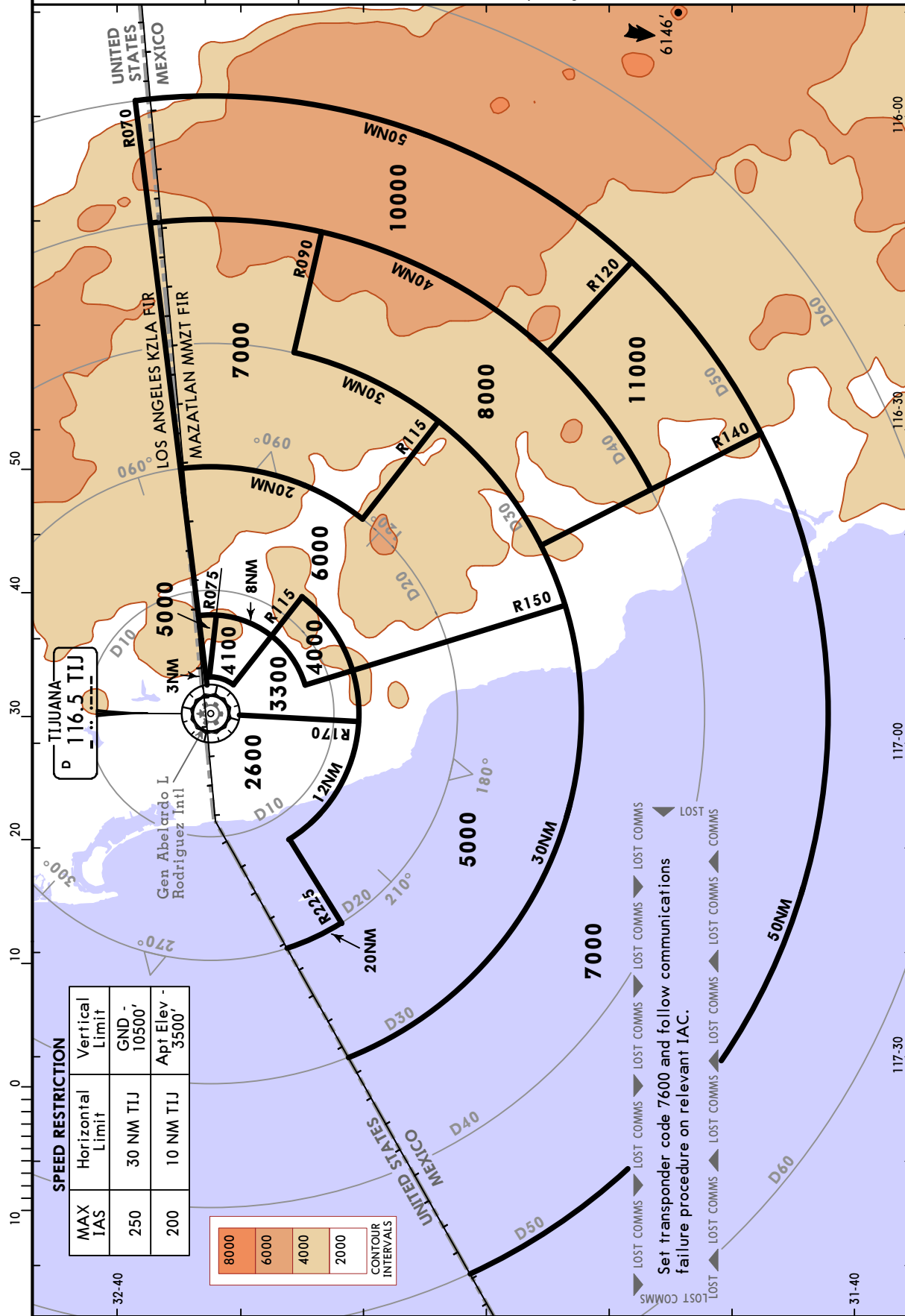
GEN ABELARDO L RODRIGUEZ INTL

10-1R

25 AUG 17

RADAR MINIMUM ALTITUDES

*TIJUANA Approach (R)	Alt Set: MB (IN on req)	Trans level: FL195	Trans alt: 18500'
119.5 120.3	Apt Elev 487'	1. These MVAs are the lowest altitudes that can be assigned by the controller in a sector when RADAR control procedures are applied, without affecting routes and procedures with lower minimums. 2. All aircraft operating under VFR within the TMA should have transponder mode 3A/C and 4096 code capability. 3. Exclusive use chart to verify assigned altitudes to identified aircraft.	



MMTJ/TIJ

JEPPESEN

TIJUANA, MEXICO

GEN ABELARDO L RODRIGUEZ INTL

10-2

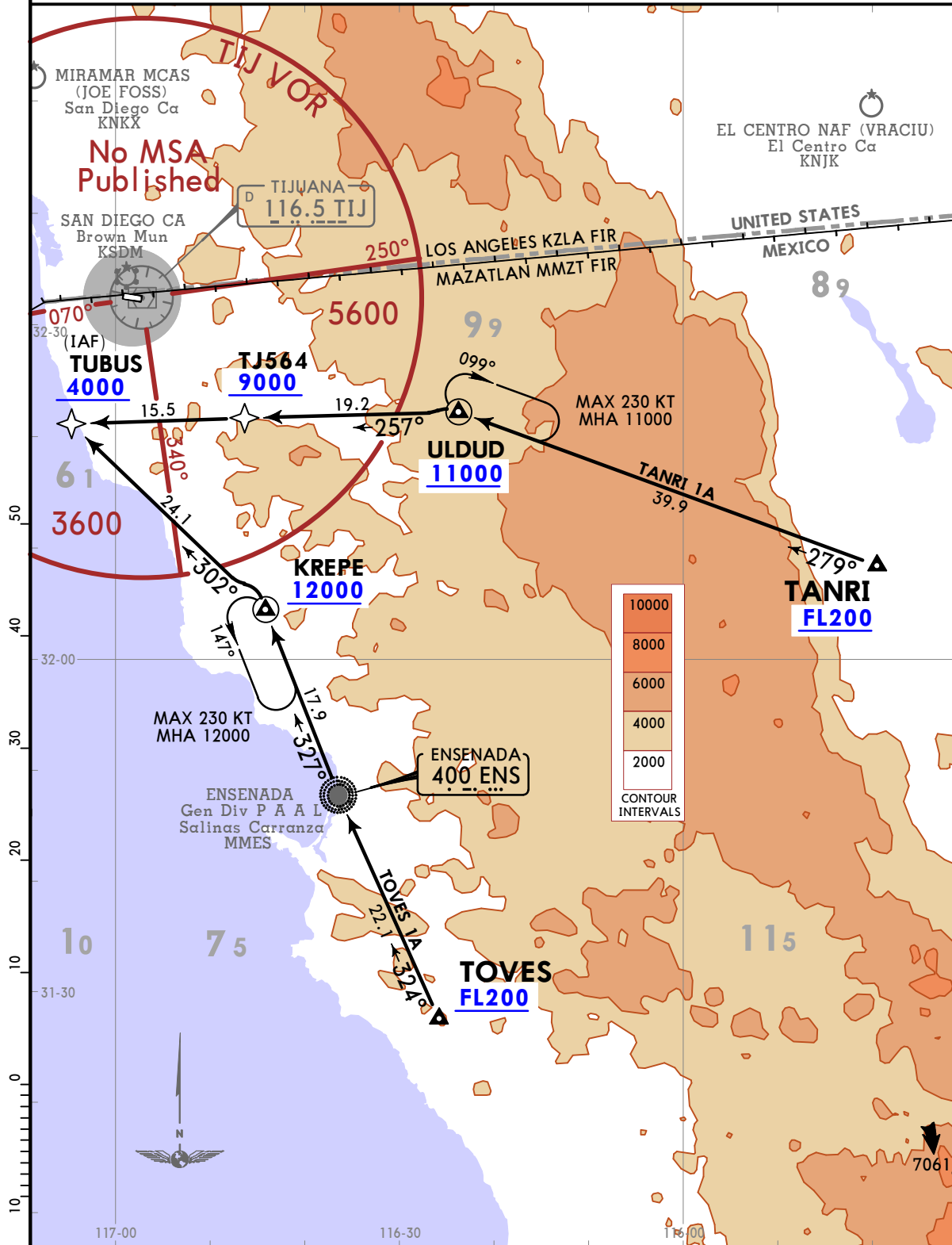
7 JUL 23

Eff 13 Jul

RNAV STAR

ATIS 127.9	Apt Elev 487	Alt Set: IN (MB on req) Trans level: FL195
		RNAV 1 GNSS required
		RADAR required.

TANRI 1A (TANRI1A) [TANR1A]
 TOVES 1A (TOVES1A) [TOVE1A]
 RNAV ARRIVALS
 (RWY 09)



ROUTING

From TOVES or TANRI continue to the waypoints, altitudes and tracks shown, to the corresponding IAF and continue on approach procedure or according to ATC instructions.

CHANGES: MSA revised, airways removed.

© JEPPESEN, 2020, 2023. ALL RIGHTS RESERVED.

MMTJ/TIJ

JEPPESSEN

TIJUANA, MEXICO

GEN ABELARDO L RODRIGUEZ INTL

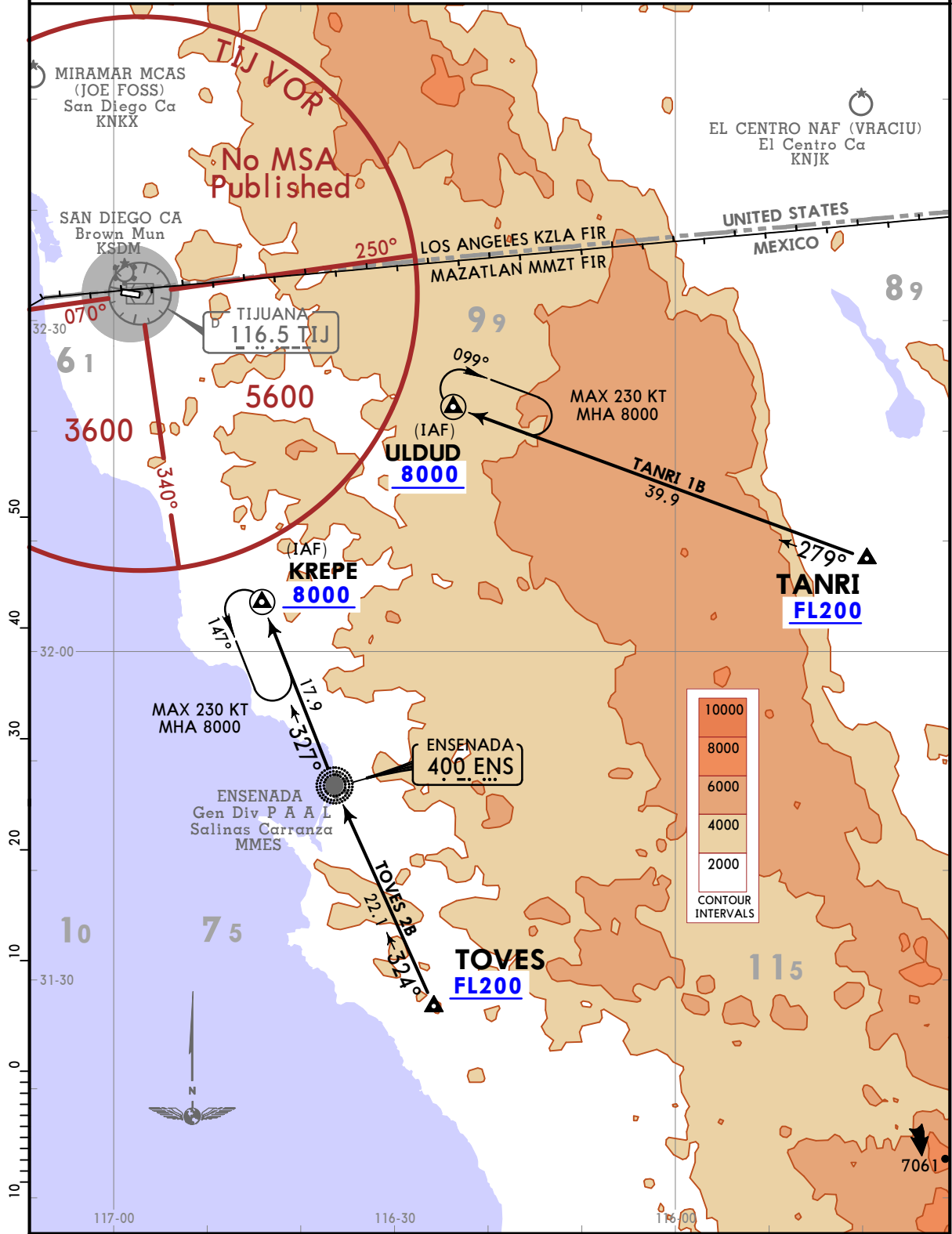
(10-2A)

7 JUL 23
Eff 13 Jul

RNAV STAR

ATIS 127.9	Apt Elev 487	Alt Set: IN (MB on req) Trans level: FL195
		RNAV 1 GNSS required
		RADAR required.

**TANRI 1B (TANRI1B) [TANR1B]
TOVES 2B (TOVES2B) [TOVE2B]
RNAV ARRIVALS
(RWY 27)**



ROUTING

From TOVES or TANRI continue to the waypoints, altitudes and tracks shown, to the corresponding IAF and continue on approach procedure or according to ATC instructions.

CHANGES: MSA revised, airways removed.

Apt Elev
487
 Trans alt: 18500

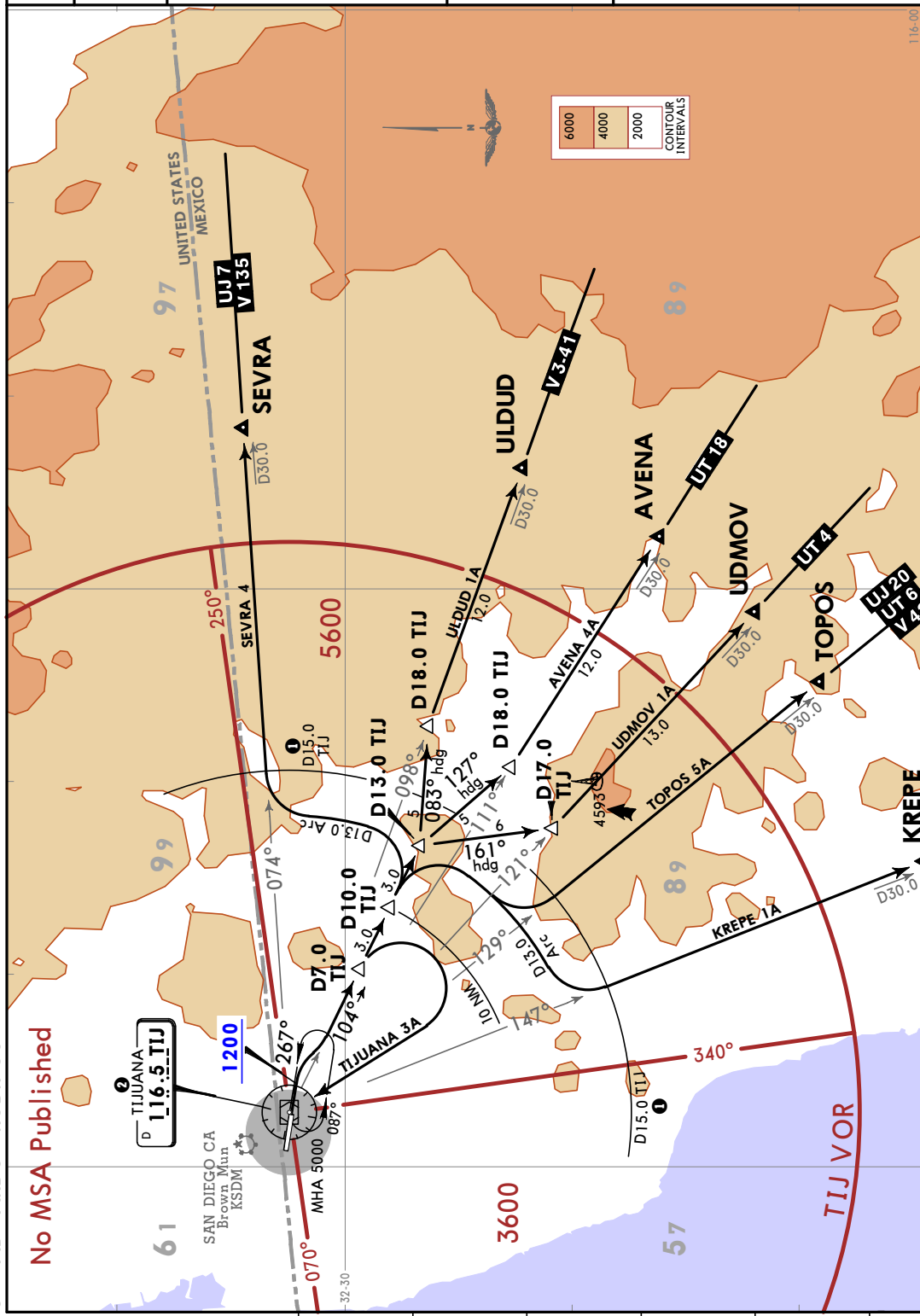
1. CAUTION: Light, low altitude, uncontrolled, US VFR traffic patrolling NORTH side of the border.
 2. In case of failure of TIJ VOR/DME and/or radio aids involved in this procedure, EXPECT RADAR vectors.

AVENA 4A (AVENA4A) [AVENA4A]
KREPE 1A (KREPE1A) [KREP1A]
SEVRA 4 (SEVRA4) [SEVRA4]
TIJUANA 3A (TIJ3A) [TIJ3A]
TOPOS 5A (TOPOS5A) [TOPOS5A]
UDMOV 1A (UDMOV1A) [UDMO1A]
ULDUD 1A (ULDUD1A) [ULDUD1A]
DEPARTURES (RWY 09)

These SID's require a minimum climb gradient of 340 FT/NM (5.99%) until 6000.

Grnd speed-KT	75	100	150	200	250	300
340 FT/NM	425	567	850	1133	1417	1700

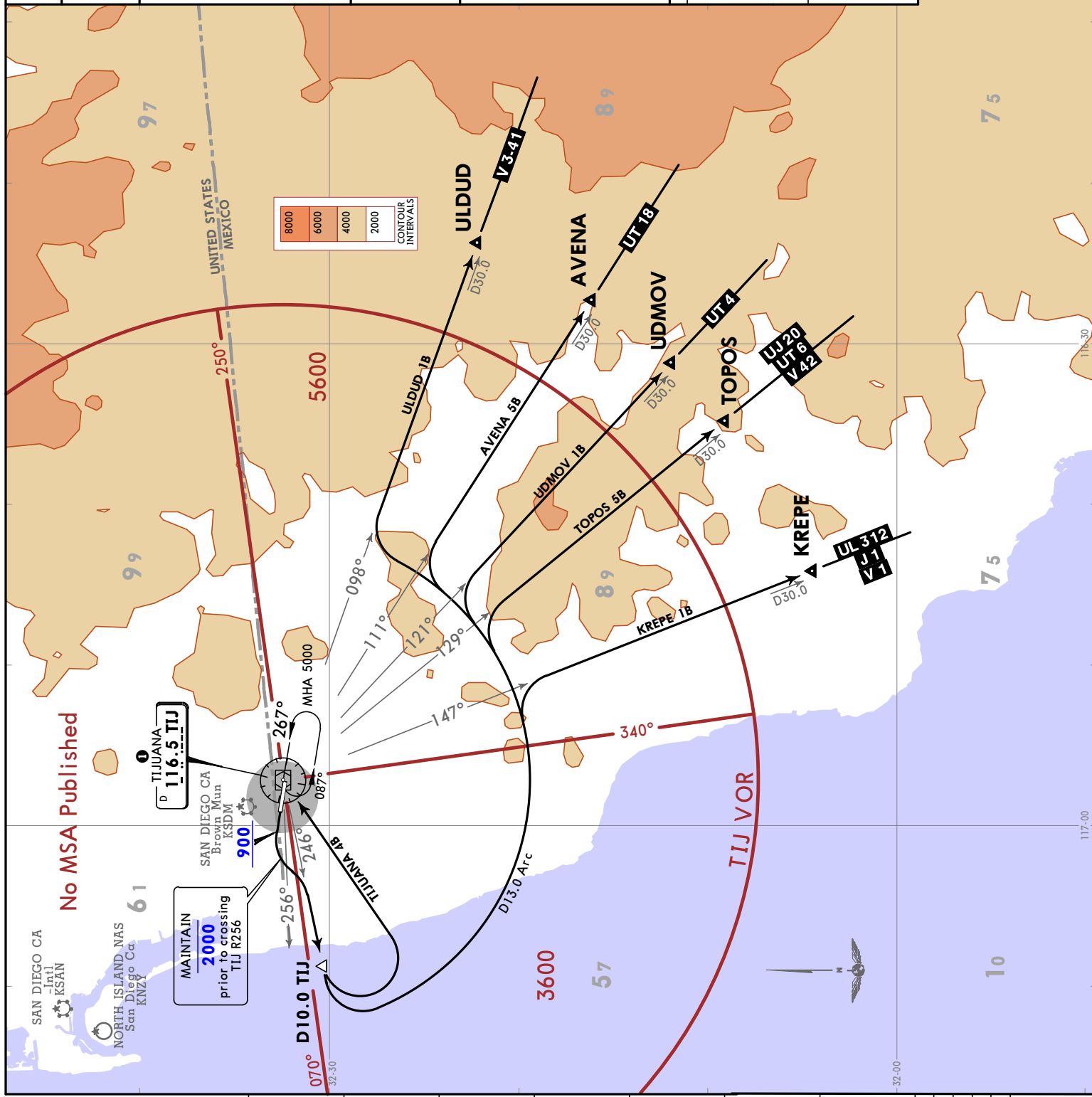
MINIMUM CROSSING ALTITUDE	
MXL V-135	UJ-7 6000
MXL V-41	UJ-3 6000
V-3	UT-18 5000
HMO	UT-4 5000
LMMU	UT-6 4000
ENS	UJ-20 4000
SQN	J-1, UL-312 4000
MZB	J-1 3700



SID	INITIAL CLIMB	ALTITUDE
AVENA 4A	Climb on runway heading to 1200, turn RIGHT and continue on TIJ R104 to D13.0 TIJ, then turn RIGHT heading 127° to intercept TIJ R111 to AVENA. Continue on the assigned route or ATC instructions.	1 MAINTAIN 6000 until D15.0 TIJ has been crossed
KREPE 1A TOPOS 5A	Climb on runway heading to 1200, turn RIGHT and continue on TIJ R104 to D10.0 TIJ, then turn RIGHT and proceed to join the D13.0 Arc TIJ to intercept the corresponding radial from TIJ VOR to KREPE or TOPOS. Continue on the assigned route or ATC instructions.	
SEVRA 4	Climb on runway heading to 1200, turn RIGHT and continue on TIJ R104 to D7.0 TIJ, then turn RIGHT within 10 NM to TIJ VOR. Depart TIJ VOR according to the MCA for the assigned route or ATC instructions.	
TIJUANA 3A	Climb on runway heading to 1200, turn RIGHT and continue on TIJ R104 to D13.0 TIJ, then turn RIGHT heading 161° to intercept TIJ R121 to UDMOV. Continue on the assigned route or ATC instructions.	
UDMOV 1A	Climb on runway heading to 1200, turn RIGHT and continue on TIJ R104 to D10.0 TIJ, then turn LEFT and proceed to join the D13.0 Arc TIJ to intercept TIJ R074 to SEVRA. Continue on the assigned route or ATC instructions.	
ULDUD 1A	Climb on runway heading to 1200, turn RIGHT and continue on TIJ R104 to D13.0 TIJ, then turn LEFT heading 083° to intercept TIJ R098 to ULDUD. Continue on the assigned route or ATC instructions.	

JEPPesen TIJUANA, MEXICO
SID
 7 JUL 23 (10-3A) Eff 13 JUL

MMTJ/TIJ
 GEN ABELARDO L RODRIGUEZ INTL



Apt Elev
 487
 Trans alt: 18500

1. CAUTION: Light, low altitude, uncontrolled, US VFR traffic patrolling NORTH side of the border.
 2. In case of failure of TIJ VOR/DME and/or radio aids involved in this procedure, EXPECT RADAR vectors.

**AVENA 5B (AVENA5B) [AVEN5B]
 KREPE 1B (KREPE1B) [KREP1B]
 TIJUANA 4B (TIJ4B) [TIJ4B]
 TOPOS 5B (TOPOS5B) [TOPO5B]
 UDMOV 1B (UDMOV1B) [UDMO1B]
 ULUDUD 1B (ULUDUD1B) [ULDU1B]
 DEPARTURES
 (RWY 27)**

These SIDs require a minimum climb gradient of 300 FT/NM (4.93%) until 5000.

Grnd speed-KT	75	100	150	200	250	300
300 FT/NM	375	500	750	1000	1250	1500

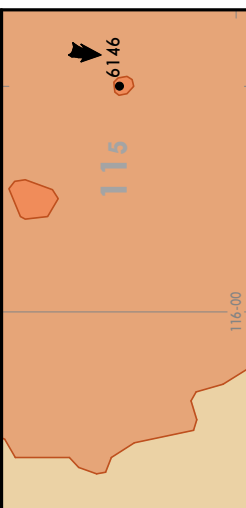
MINIMUM CROSSING ALTITUDE	
MXL V-135	6000
MXL V-41	6000
V-3	6000
PPE	6000
HMO	5000
LMM	5000
IMUSU	5000
V-1	4000
ENS	4000
SON	4000
SCN	4000
MZB	3700
UJ-7	6000
UJ-3	6000
UT-18	5000
UT-4	5000
UT-6	5000
UJ-20	4000
J-1, UL-312	4000
J-1	3700

SID

AVENA 5B
KREPE 1B
UDMOV 1B
ULUDUD 1B

INITIAL CLIMB
 Climb on runway heading until 900, turn LEFT, cross TIJ R256 at or below 2000 and proceed on TIJ R246 to D10.0 TIJ, turn LEFT to join the D13.0 Arc TIJ to intercept the corresponding radial from TIJ VOR to AVENA, KREPE, TOPOS, UDMOV or ULUDUD. Continue on the assigned route or ATC instructions.

TIJUANA 4B
 Climb on runway heading until 900, turn LEFT, cross TIJ R256 at or below 2000 and proceed on TIJ R246 to D10.0 TIJ, turn LEFT within 13 NM to TIJ VOR. Depart TIJ VOR according to the MCA for the assigned route or ATC instructions.



No MSA Published

MAINTAIN 2000
 prior to crossing
 TIJ R256

TIJUANA 4B
 116.5 TIJ

SAN DIEGO CA
 Intl
 KSNZ
 NORTH ISLAND NAS
 San Diego Ca.
 San KNZY

SAN DIEGO CA
 Brown Mun
 KSDM
 900

MHA 5000

070°

087°

246°

256°

267°

250°

250°

250°

250°

250°

250°

250°

250°

250°

MMTJ/TIJ

JEPPESSEN

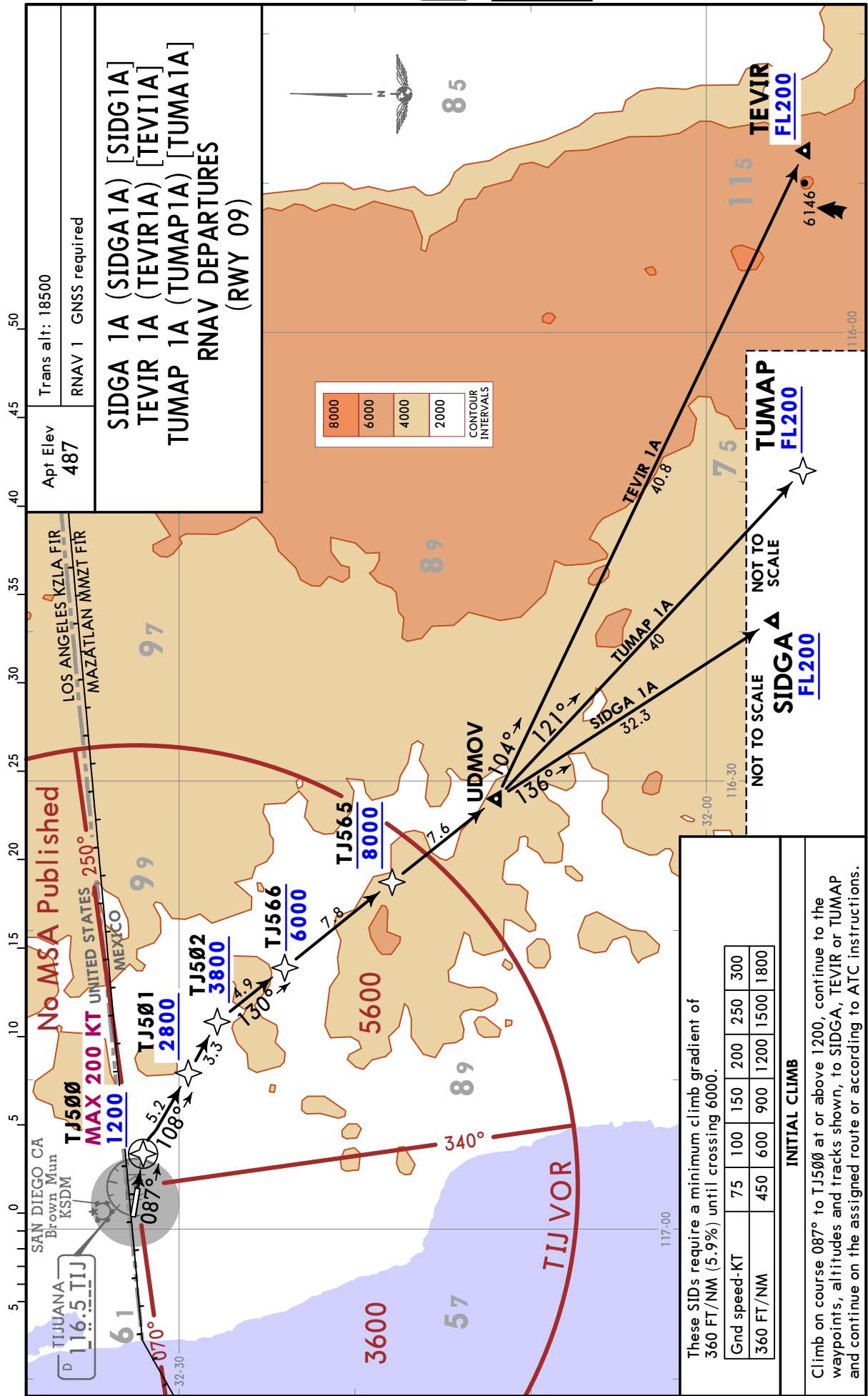
TIJUANA, MEXICO

GEN ABELARDO L RODRIGUEZ INL

10-3B

7 JUL 23
Eff 13 Jul

RNAV SID



MMTJ/TIJ

JEPPesen

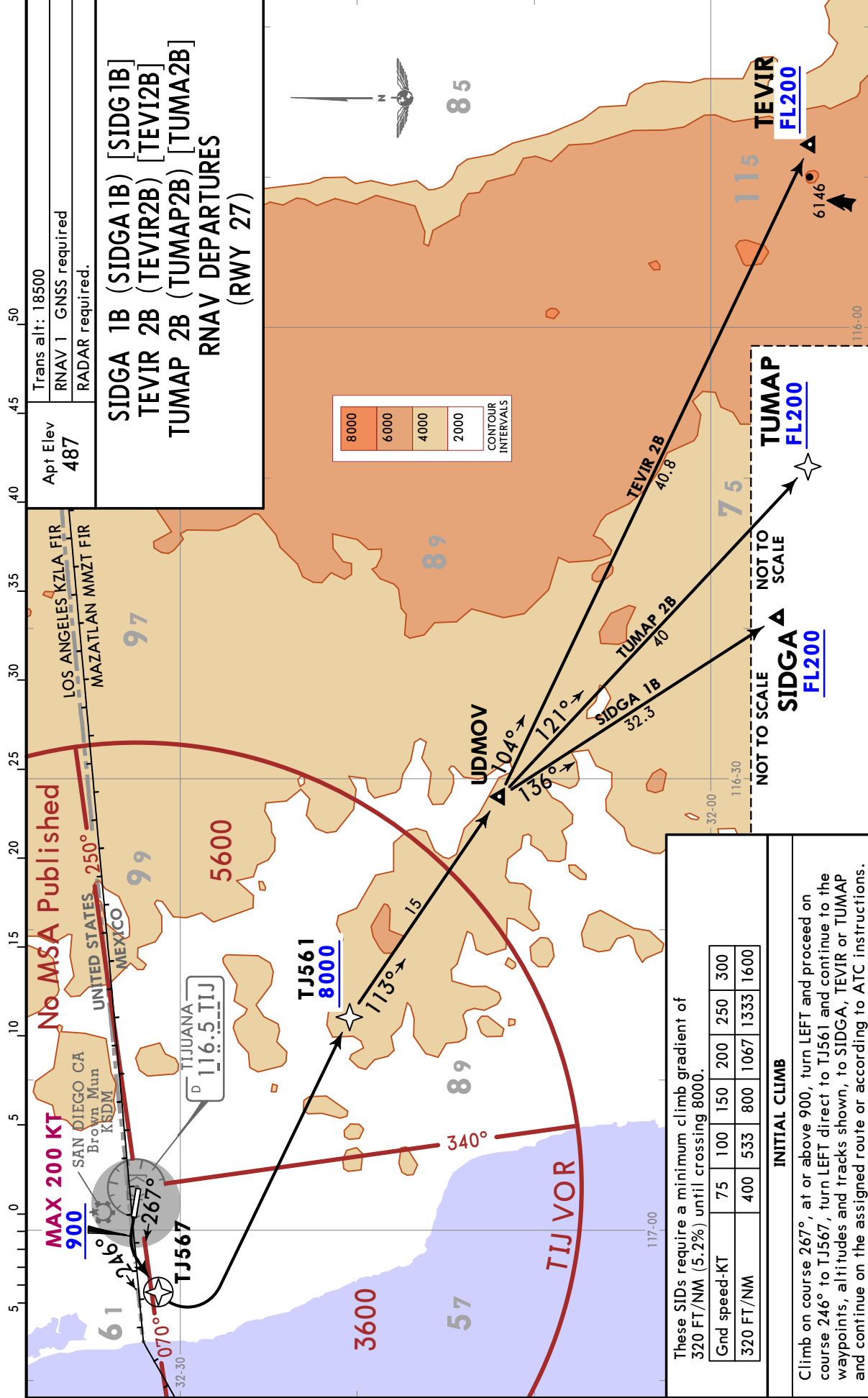
TIJUANA, MEXICO

GEN ABELARDO L RODRIGUEZ INL

10-3C

7 JUL 23
Eff 13 Jul

RNAV SID



CHANGES: MSA revised.

© JEPPesen, 2020, 2023. ALL RIGHTS RESERVED.

MMTJ/TIJ

Apt Elev **487'**
N32 32.5 W116 58.2

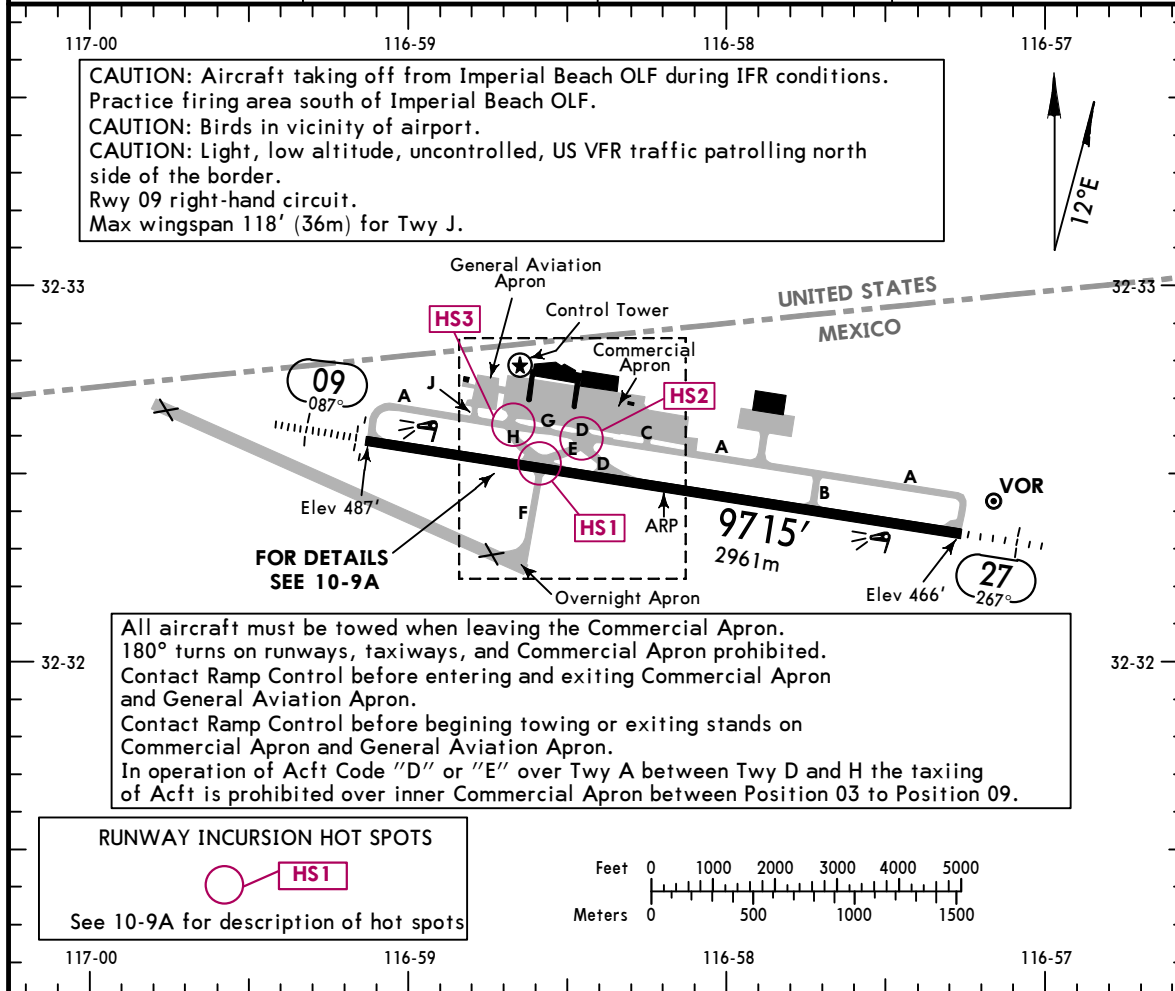


15 MAR 24 **(10-9)**

TIJUANA, MEXICO

GEN ABELARDO L RODRIGUEZ INTL

ATIS 127.9	TIJUANA Clearance 122.35	Ramp Control 126.10	Tower 118.1
----------------------	------------------------------------	-------------------------------	-----------------------



All aircraft must be towed when leaving the Commercial Apron. 180° turns on runways, taxiways, and Commercial Apron prohibited. Contact Ramp Control before entering and exiting Commercial Apron and General Aviation Apron. Contact Ramp Control before beginning towing or exiting stands on Commercial Apron and General Aviation Apron. In operation of Acft Code "D" or "E" over Twy A between Twy D and H the taxiing of Acft is prohibited over inner Commercial Apron between Position 03 to Position 09.

RUNWAY INCURSION HOT SPOTS
See 10-9A for description of hot spots

RWY	ADDITIONAL RUNWAY INFORMATION					USABLE LENGTHS			WIDTH
	HIRL	CL	TDZ	SALS	PAPI-L (angle 3.0°)	Threshold	Glide Slope	TAKE-OFF	
09	HIRL	CL	TDZ	SALS	PAPI-L (angle 3.0°)		8577' (2614m)		148'
27	HIRL	CL	SSALS	① PAPI-L (angle 3.0°)					45m

① PAPI usage restricted to 4.5 NM because it doesn't clear obstructions beyond that distance.

TAKE-OFF & DEPARTURE PROCEDURE					FOR FILING AS ALTERNATE	
Rwy 27			Rwy 09		Precision	Non-Precision
SCHEDULED AIR CARRIER ONLY						
If meteorological conditions are below landing minimums an alternate is required before take-off. The pilot in command must report 7 longitudinal runway lights in the direction of take-off as a minimum for visibility of the high intensity runway lights. This system should be operative and the runway should have centerline markings. If there are differences between the reported values by the equipment and what the pilot reports, it will be taken as valid those counted by the pilot.						
2 Eng	1/4		1 & 2 Eng	200-1/2	A	600-2
3 & 4 Eng			3 & 4 Eng	1600-2	B	1600-3
					C	
					D	

For departure procedures and MCAs see SIDs.

MMTJ/TIJ

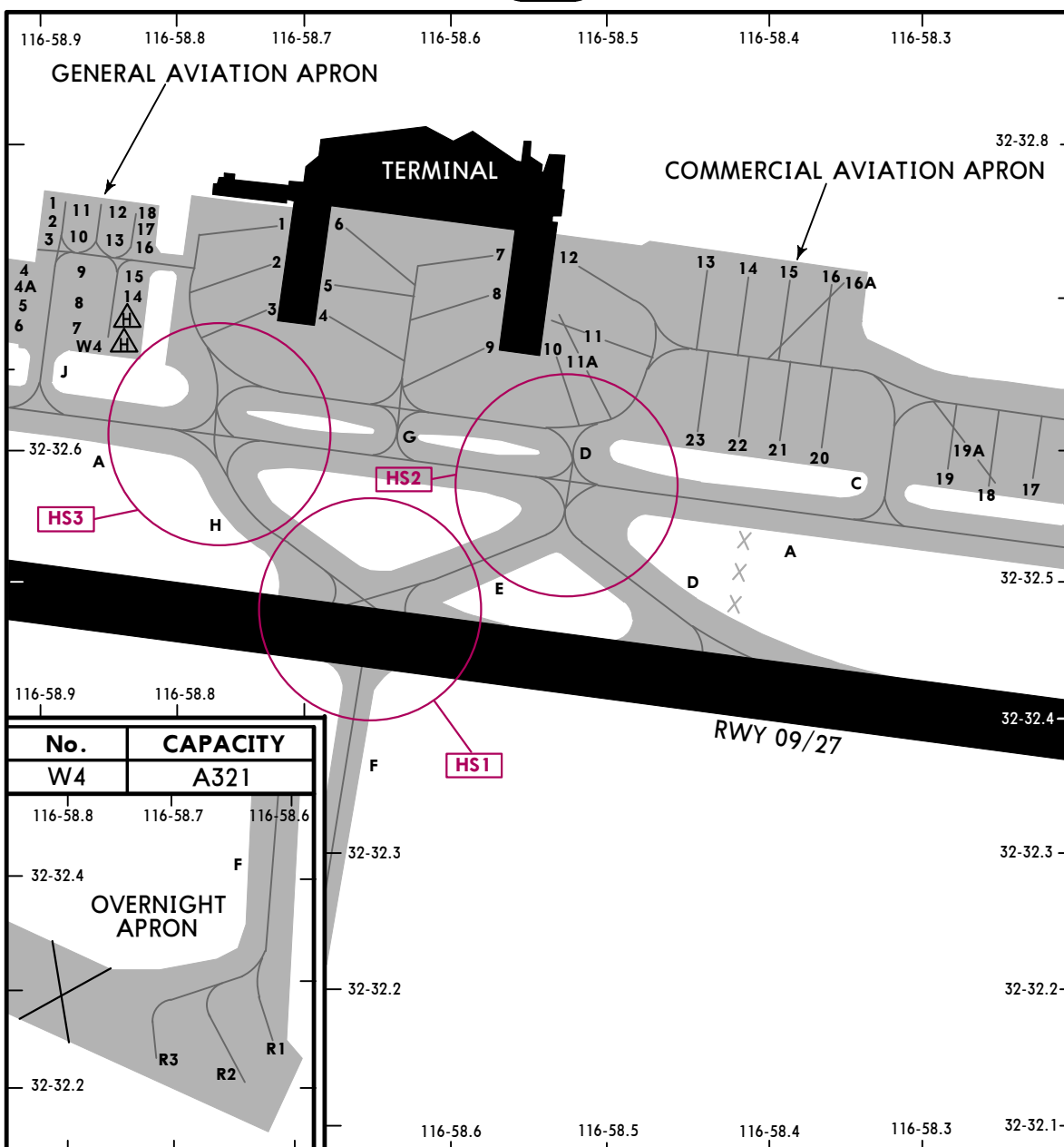
JEPPESSEN

TIJUANA, MEXICO

15 MAR 24

10-9A

GEN ABELARDO L RODRIGUEZ INTL



No.	CAPACITY
W4	A321

PARKING SPOT COORDINATES	
SPOT No.	COORDINATES
Commercial Apron	
1 thru 6	N32 32.7 W116 58.6
7 thru 11, 11A	N32 32.7 W116 58.5
12, 13	N32 32.7 W116 58.4
14, 15, 16, 16A	N32 32.7 W116 58.3
17, 18, 19, 19A	N32 32.6 W116 58.2
20, 21, 22	N32 32.8 W116 58.3
23	N32 32.6 W116 58.4
R1	N32 32.3 W116 58.6
R2, R3	N32 32.3 W116 58.7
General Aviation Apron	
W4	N32 32.7 W116 58.8

RUNWAY INCURSION HOT SPOTS

HS1

HS1 Aircraft landing on Rwy 27 must vacate completely by Twy H, crossing the holding point of the Rwy and waiting in the intermediate holding point before Twy A. Towed aircraft on Twy E, Twy F and Twy H shall stay at the holding point of Rwy. Make contact with ATC and wait for authorization to cross the Rwy.

HS2 Aircraft leaving commercial apron should contact ATC and wait for authorization to enter Twy. Aircraft on Twy A, Twy D and Twy E shall stay at the intermediate holding point before commercial apron until ATC clearance to enter apron is approved.

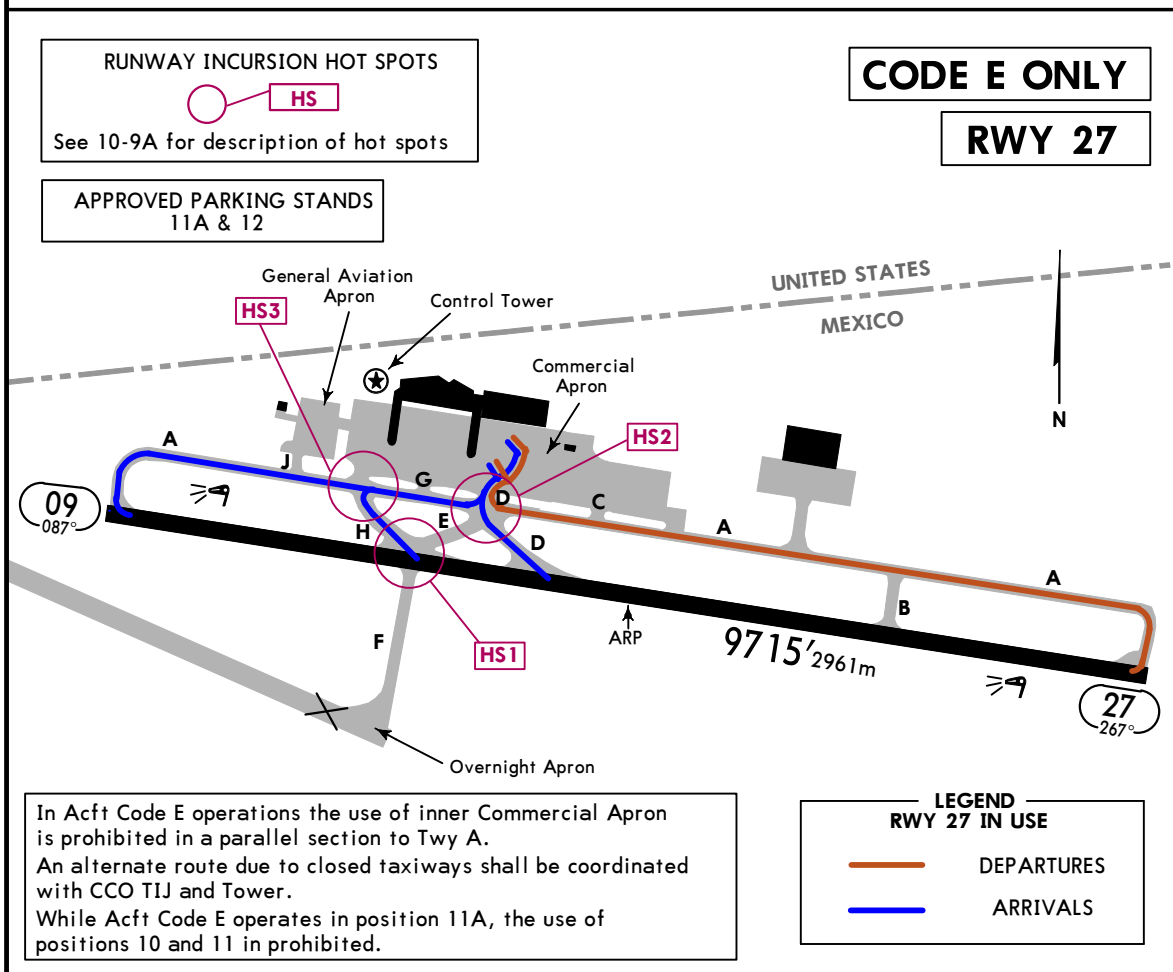
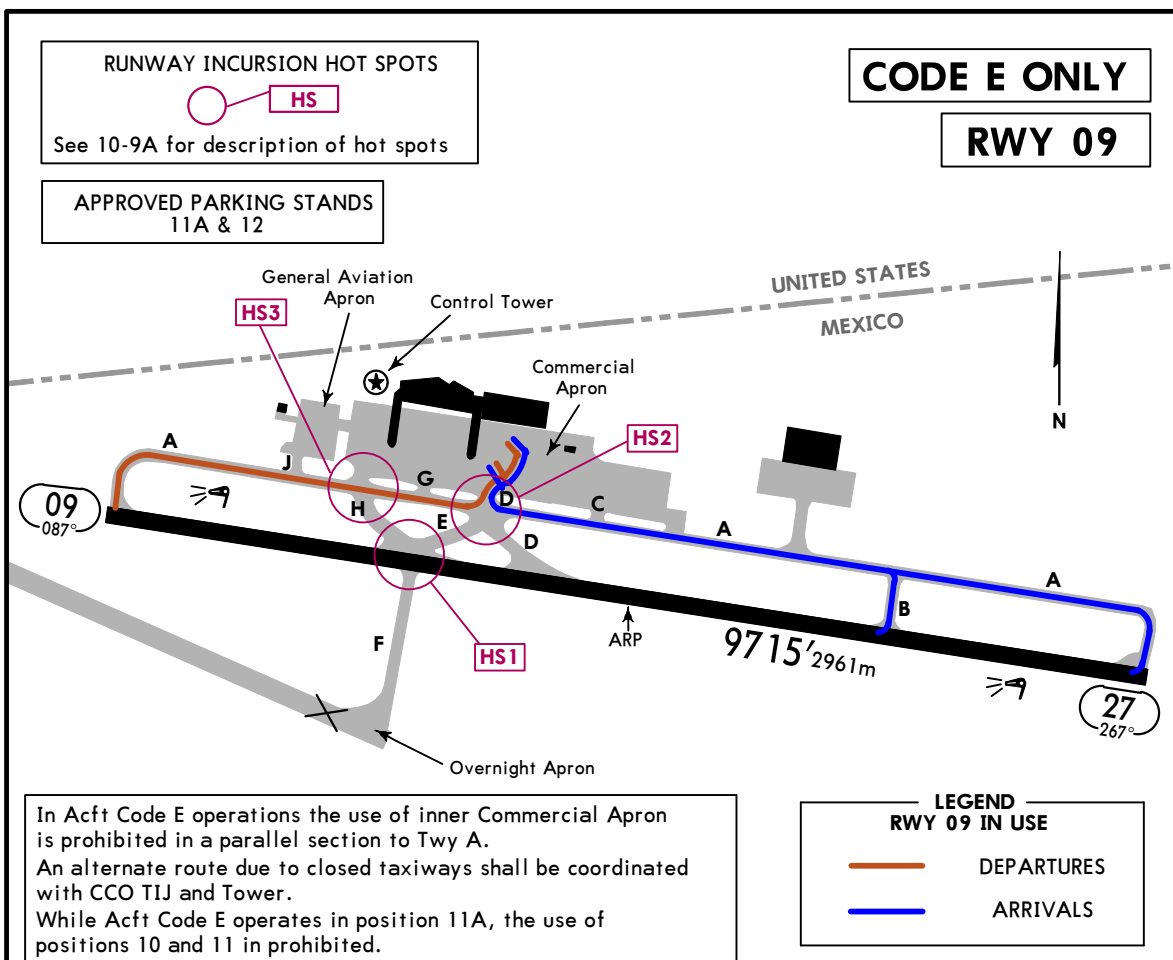
HS3 Aircraft leaving commercial apron should contact ramp control to begin towing coordination. Aircraft on Twy H and Twy A shall stay at the intermediate holding point before commercial apron until the ATC clearance to enter apron is approved.

MMTJ/TIJ

14 APR 23 **JEPPESEN**

TIJUANA, MEXICO

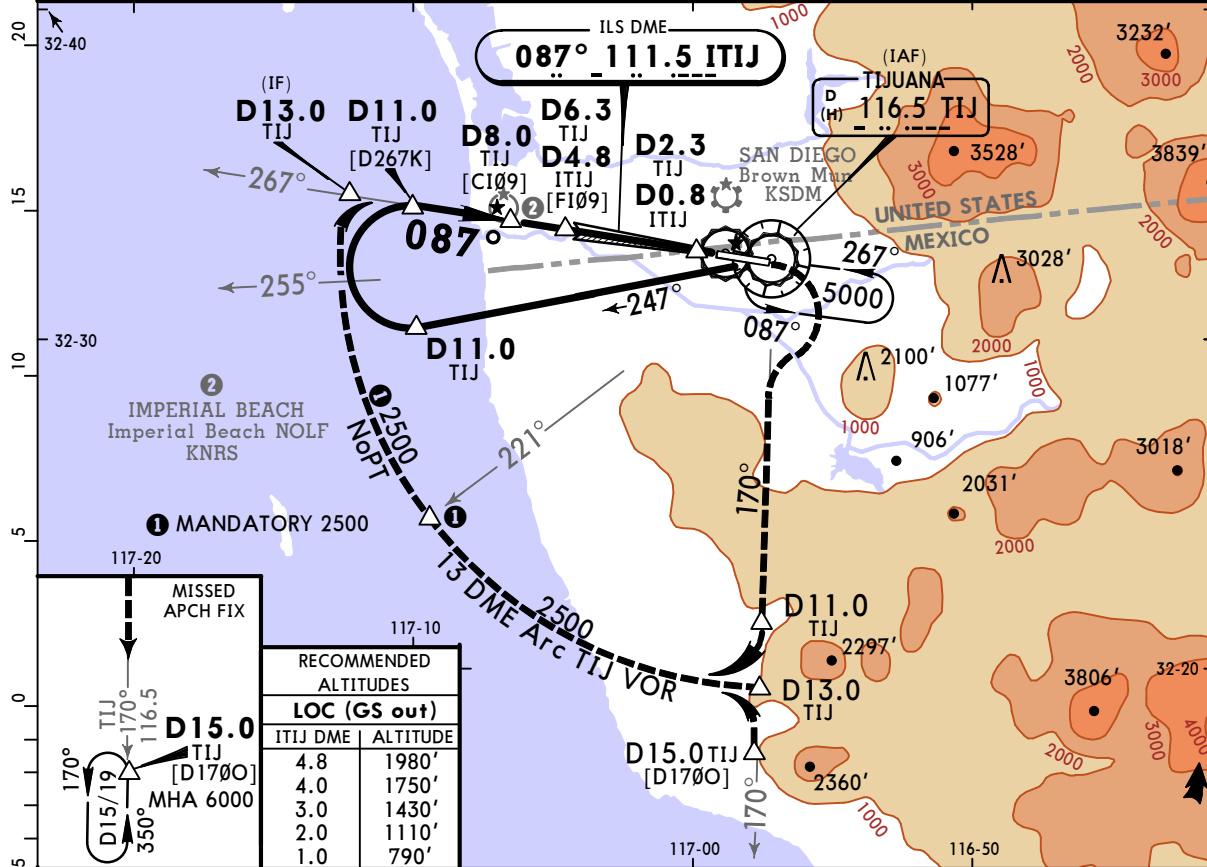
GEN ABELARDO L RODRIGUEZ INTL



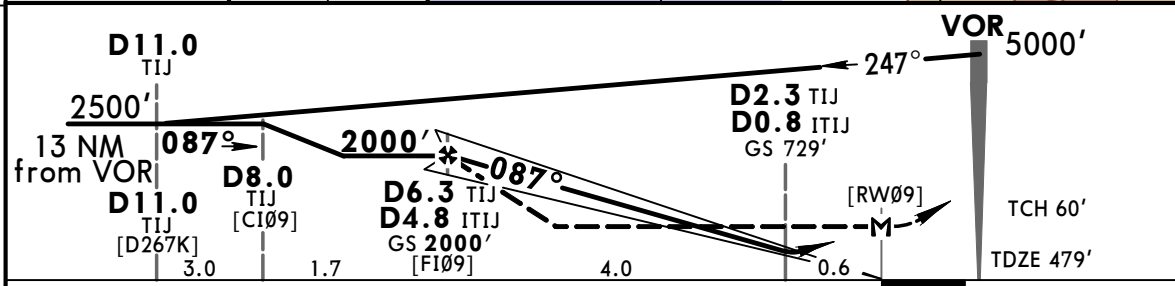
MMTJ/TIJ JEPPESSEN TIJUANA, MEXICO

GEN ABELARDO L RODRIGUEZ INTL (11-1) 5 JUL 24 ILS or LOC Z Rwy 09

ATIS 127.9		TIJUANA Approach (R) 119.5 120.3		TIJUANA Tower 118.1
LOC ITIJ 111.5	Final Apch Crs 087°	GS D6.3 TIJ D4.8 ITIJ 2000' (1521')	ILS DA(H) 729' (250')	Apt Elev 487' TDZE 479'
MISSED APCH: Climb direct to 800', turn RIGHT and climb to intercept TIJ VOR R-170 outbound to D11.0 TIJ, turn RIGHT and join the 13 DME Arc or continue on TIJ VOR R-170 to hold at D15/19 TIJ according to ATC instructions.				<p>No MSA published</p> <p>MSA TIJ VOR</p>
Alt Set: IN (MB on req)		Trans level: FL195	Trans alt: 18500'	
1. VOR/DME required. 2. Do not use radio altimeter due to orographic conditions. 3. CAUTION: Light, low altitude, uncontrolled, US VFR traffic patrolling North side of the border. 4. Do not use both holding patterns at the same altitude simultaneously. 5. CAUTION: Before crossing the border A) Activate transponder code assigned by TIJ APCH B) Fly level at 2500' in turn.				



MISSED APCH FIX 	
RECOMMENDED ALTITUDES	
LOC (GS out)	
TIJ DME	ALTITUDE
4.8	1980'
4.0	1750'
3.0	1430'
2.0	1110'
1.0	790'

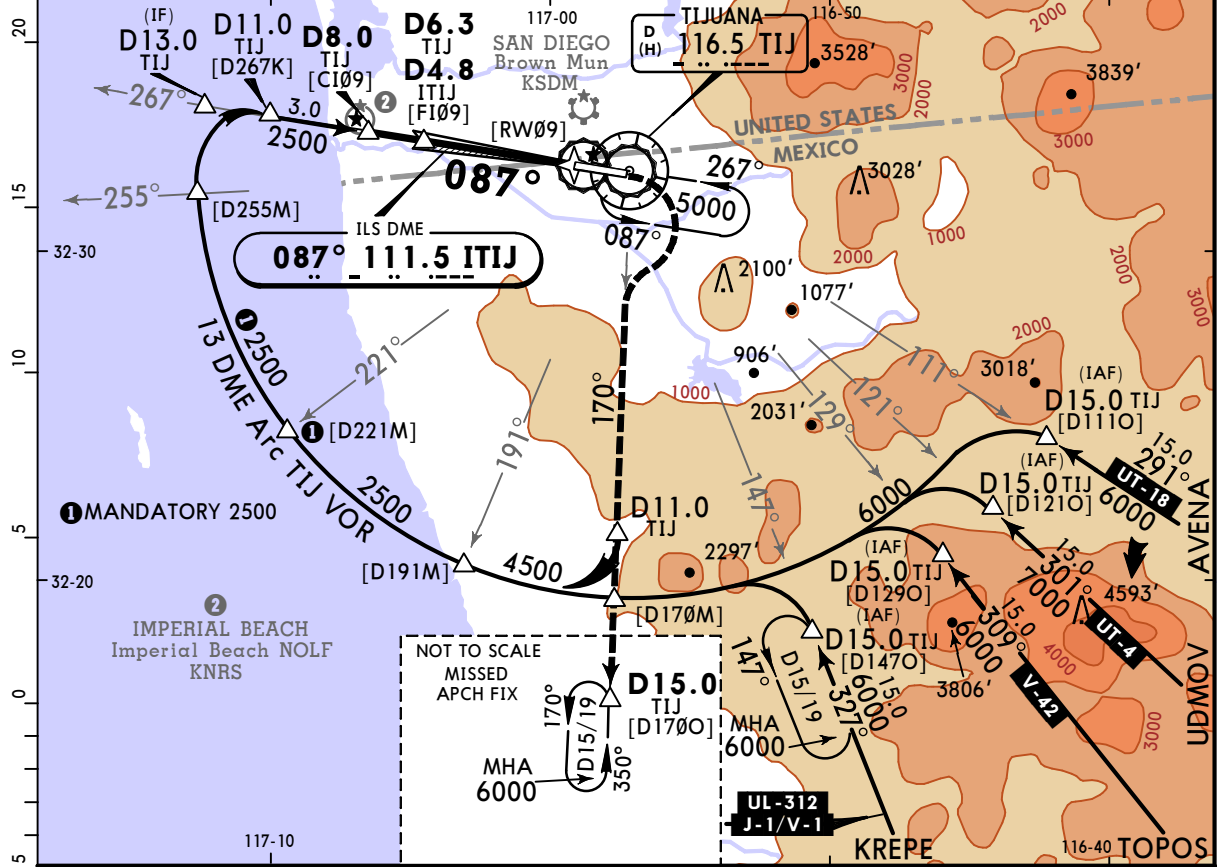
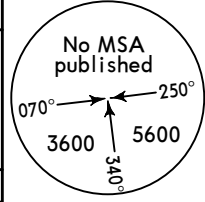


Gnd speed-Kts	70	90	100	120	140	160	SALS PAPI 800' RT and ↑ TIJ 116.5 R-170
GS	3.00°	372	478	531	637	743	
FAF to MAP	4.6	3:57	3:04	2:46	2:18	1:58	

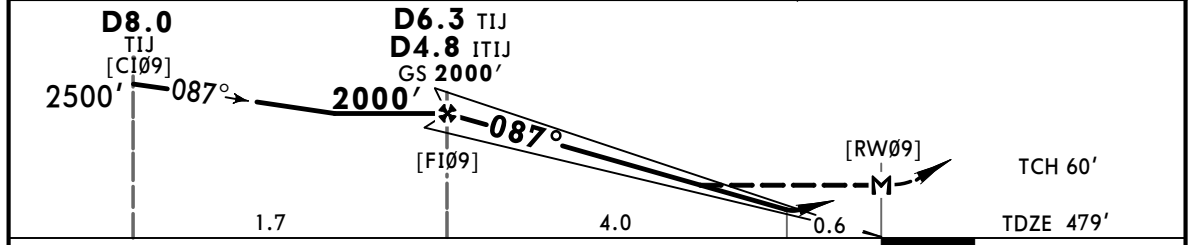
STRAIGHT-IN LANDING RWY 09				CIRCLE-TO-LAND	
ILS DA(H) 729' (250')		LOC (GS out) MDA(H) 840' (361')		Not Authorized North of Rwy 09-27	
FULL		ALS out		Max Kts	
FULL		ALS out		90	1180' (693') -1
FULL		ALS out		120	1180' (693') -2
FULL		ALS out		140	1180' (693') -2
FULL		ALS out		165	1180' (693') -2 1/4

MMTJ/TIJ **JEPPESEN** **TIJUANA, MEXICO**
GEN ABELARDO L RODRIGUEZ INTL (11-2) **5 JUL 24** **Eff 11 Jul** **ILS or LOC Y Rwy 09**

ATIS 127.9		TIJUANA Approach (R) 119.5 120.3		TIJUANA Tower 118.1	
LOC ITIJ 111.5	Final Apch Crs 087°	D6.3 TIJ D4.8 ITIJ 2000' (1521')	ILS DA(H) 729' (250')	Apt Elev 487' TDZE 479'	
MISSED APCH: Climb direct to 800', turn RIGHT and climb to intercept TIJ VOR R-170 outbound to D11.0 TIJ, turn RIGHT and join the 13 DME Arc or continue on TIJ VOR R-170 to hold at D15/19 TIJ according to ATC instructions.					
Alt Set: IN (MB on req)		Trans level: FL195		Trans alt: 18500'	
1. VOR/DME required. 2. Do not use radio altimeter due to orographic conditions. 3. In case of DME failure during the procedure, maintain last assigned altitude and proceed to the station in accordance with ATC instructions. 4. CAUTION: Light, low altitude, uncontrolled, US VFR traffic patrolling North side of the border. 5. Do not use both holding patterns at the same altitude simultaneously.					



LOC	ITIJ DME	4.8	4.0	3.0	2.0	1.0
(GS out)	ALTITUDE	2000'	1750'	1430'	1110'	790'

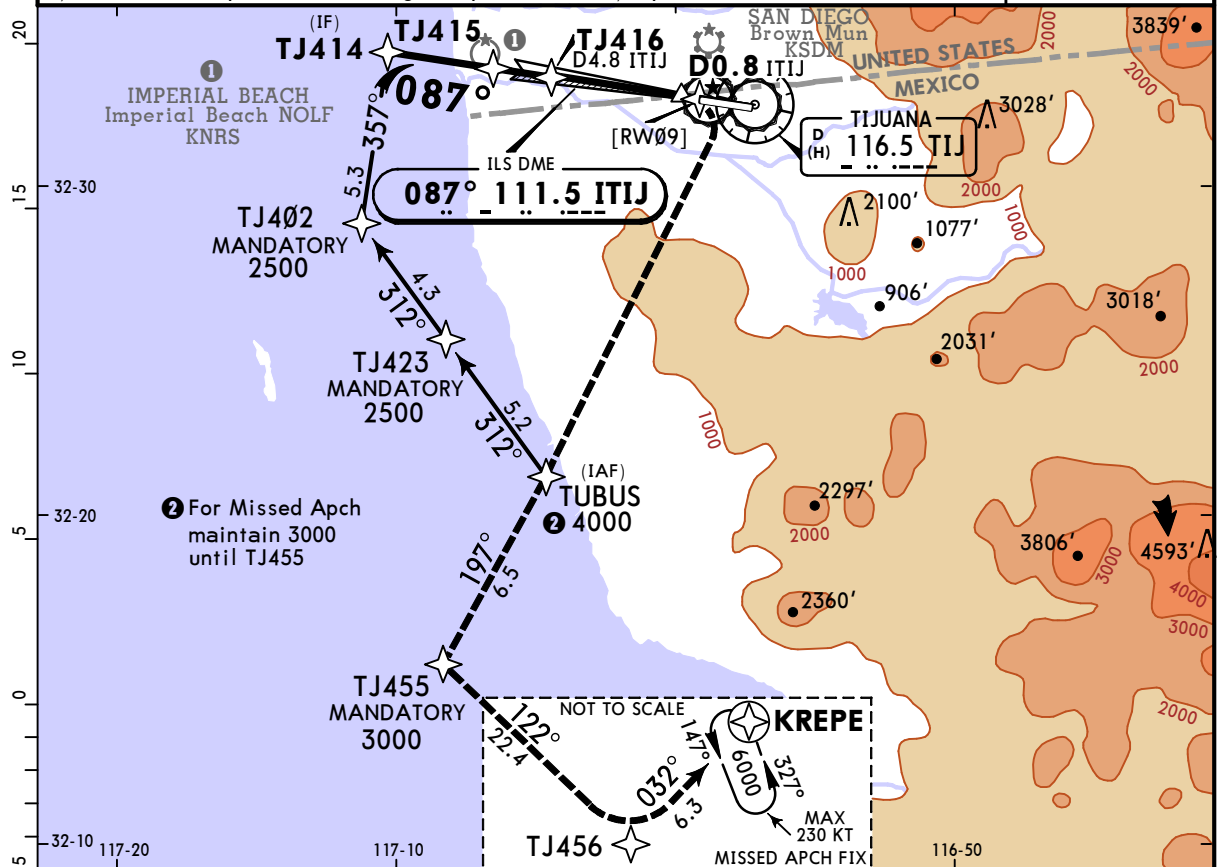
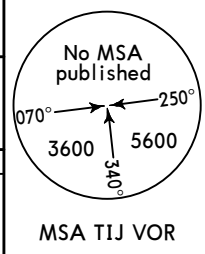


Gnd speed-Kts	70	90	100	120	140	160	PAPI SALS 800' RT and ↑ TIJ 116.5 R-170	
GS	3.00°	372	478	531	637	743		849
FAF to MAP	4.6	3:57	3:04	2:46	2:18	1:58		1:43

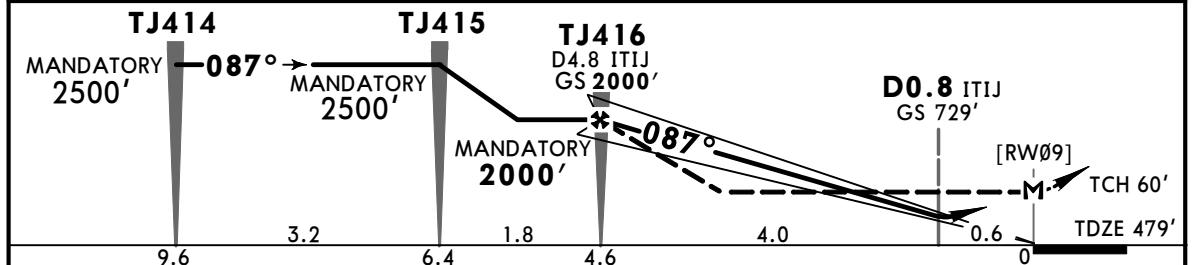
STRAIGHT-IN LANDING RWY 09				CIRCLE-TO-LAND	
ILS		LOC (GS out)		Not Authorized North of Rwy 09-27	
DA(H) 729' (250')		MDA(H) 840' (361')		MDA(H)	
FULL		ALS out		Max Kts	
A				90	1180' (693') -1
B				120	1180' (693') -2
C	1/2	3/4	3/4	140	1180' (693') -2 1/4
D			1	165	

MMTJ/TIJ **JEPPESEN** **TIJUANA, MEXICO**
GEN ABELARDO L RODRIGUEZ INTL **(11-3)** **5 JUL 24** **Eff 11 Jul** **ILS or LOC X Rwy 09**

ATIS 127.9		TIJUANA Approach (R) 119.5 120.3		TIJUANA Tower 118.1	
LOC ITIJ 111.5	Final Apch Crs 087°	TJ416 MANDATORY 2000' (1521')	ILS DA(H) 729' (250')	Apt Elev 487' TDZE 479'	
MISSED APCH: Climb on runway track to 800', turn RIGHT to TUBUS at 3000', maintain 3000' until TJ455 and continue climbing to holding pattern on KREPE at 6000'.					
Alt Set: IN (MB on req)		Trans level: FL195		Trans alt: 18500'	
1. VOR/DME required. 2. GNSS Required and Operative Radar. 3. RNAV 1 required for initial approach, intermediate approach, and missed approach. 4. Do not use radio altimeter due to orographic conditions. 5. CAUTION: Light, low altitude, uncontrolled, US VFR traffic patrolling North side of the border. 6. CAUTION: Before crossing the border: A) Activate transponder code assigned by TIJ APCH. B) Fly level at 2500' from TJ423.					



LOC	ITIJ DME	4.8	4.0	3.0	2.0	1.0
(GS out)	ALTITUDE	1980'	1750'	1430'	1110'	790'



Gnd speed-Kts	70	90	100	120	140	160	SALS PAPI	800' on RWY Track	RT	MAINTAIN 3000'	TUBUS
GS	3.00°	372	478	531	637	743					
FAF to MAP	4.6	3:57	3:04	2:46	2:18	1:58	1:43				

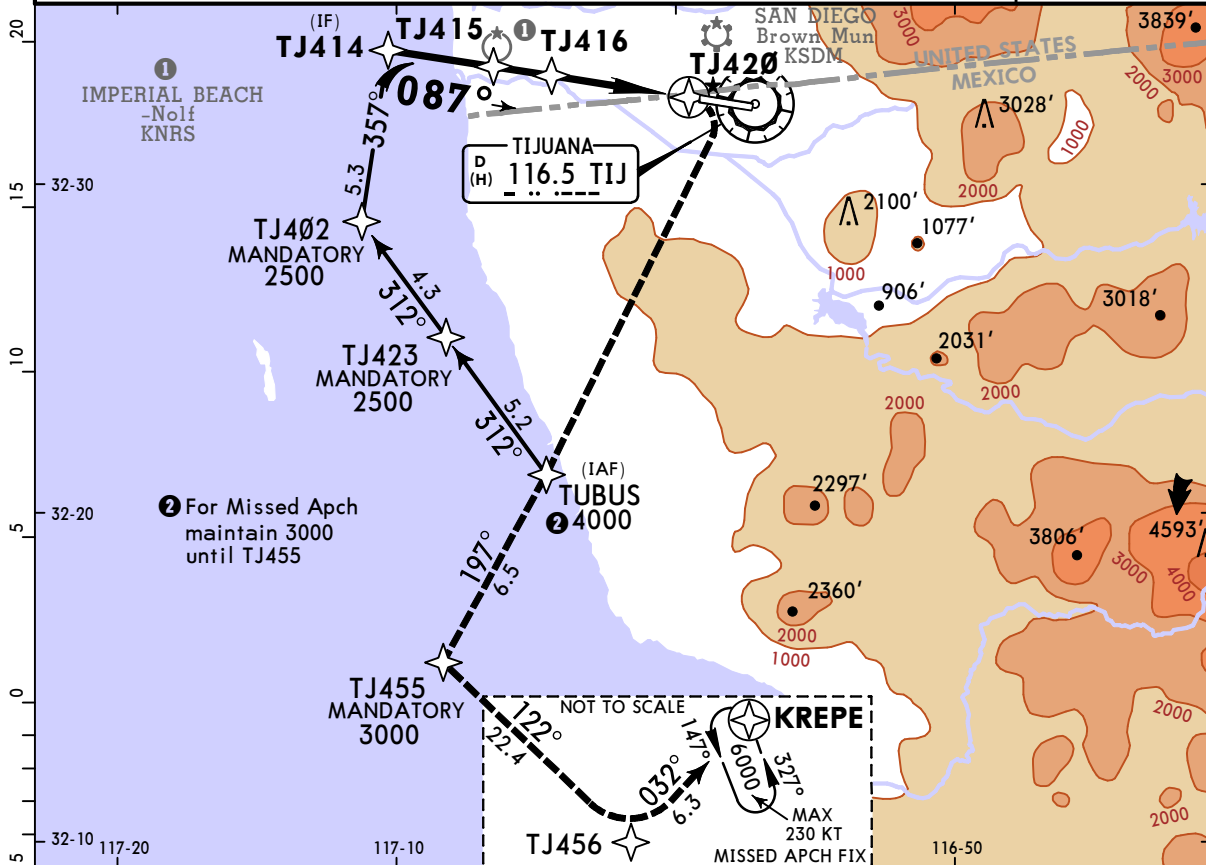
ILS STRAIGHT-IN LANDING RWY 09					CIRCLE-TO-LAND		
LOC (GS out)					Not Authorized North of Rwy 09-27		
CAT A,B, C: MDA(H) 840' (361')					MDA(H)		
CAT D: MDA(H) 832' (353')					1180' (693') -1		
DA(H) 729' (250')		ALS out		ALS out		1180' (693') -2	1180' (693') -2 1/4
FULL		ALS out		ALS out		Max Kts	
A						90	
B						120	
C	1/2	3/4	3/4	1		140	
D			1	1 1/4		165	

MMTJ/TIJ
GEN ABELARDO L RODRIGUEZ INTL

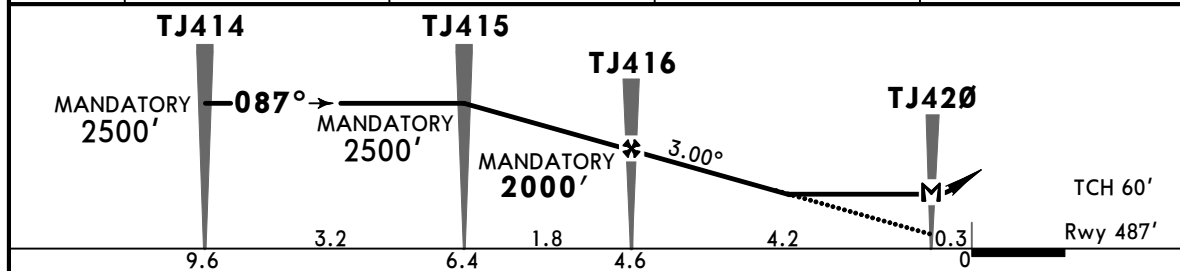
JEPPESSEN
 7 JUL 23
(12-1) Eff 13 Jul

TIJUANA, MEXICO
RNP Rwy 09

ATIS 127.9		TIJUANA Approach (R) 119.5 120.3		TIJUANA Tower 118.1	
RNAV	Final Apch Crs 087°	TJ416 MANDATORY 2000' (1513')	MDA(H) 1120' (633')	Apt Elev 487' Rwy 487'	
MISSED APCH: Turn RIGHT to TUBUS at 3000', maintain 3000' until TJ455 and continue climbing to holding pattern at KREPE at 6000'. Alt Set: IN (MB on req) Rwy Elev: 18 MB Trans level: FL 195 Trans alt: 18500' 1. GNSS Required and Operative Radar. 2. RNP Approach. 3. Do not use radio altimeter due to orographic conditions. 4. CAUTION: Light, low altitude, uncontrolled, US VFR traffic patrolling North side of the border. 5. CAUTION: Before crossing the border: A) Activate transponder code assigned by TIJ APCH. B) Fly level at 2500' from TJ423.					
					No MSA published MSA TIJ VOR



DIST to THR	4.6	4.0	3.0	2.0
ALTITUDE	2000'	1820'	1500'	1180'



Gnd speed-Kts	70	90	100	120	140	160	SALS PAPI	at	MAINTAIN	TUBUS
Descent Angle 3.00°	372	478	531	637	743	849		3000'	3000'	
MAP at TJ420								RT		
TJ416 to RW09	4.6	3:57	3:04	2:46	2:18	1:58	1:43			

STRAIGHT-IN LANDING RWY 09			CIRCLE-TO-LAND		
LNAV			Not Authorized North of Rwy 09-27		
MDA(H) 1120' (633')			MDA(H)		
	ALS out	Max Kts			
A	1	90	1180'(693') - 1		
B		120			
C	1¾	140	1180'(693') - 2		
D	2	165	1180'(693') - 2¼		

MMTJ/TIJ

GEN ABELARDO L RODRIGUEZ INTL

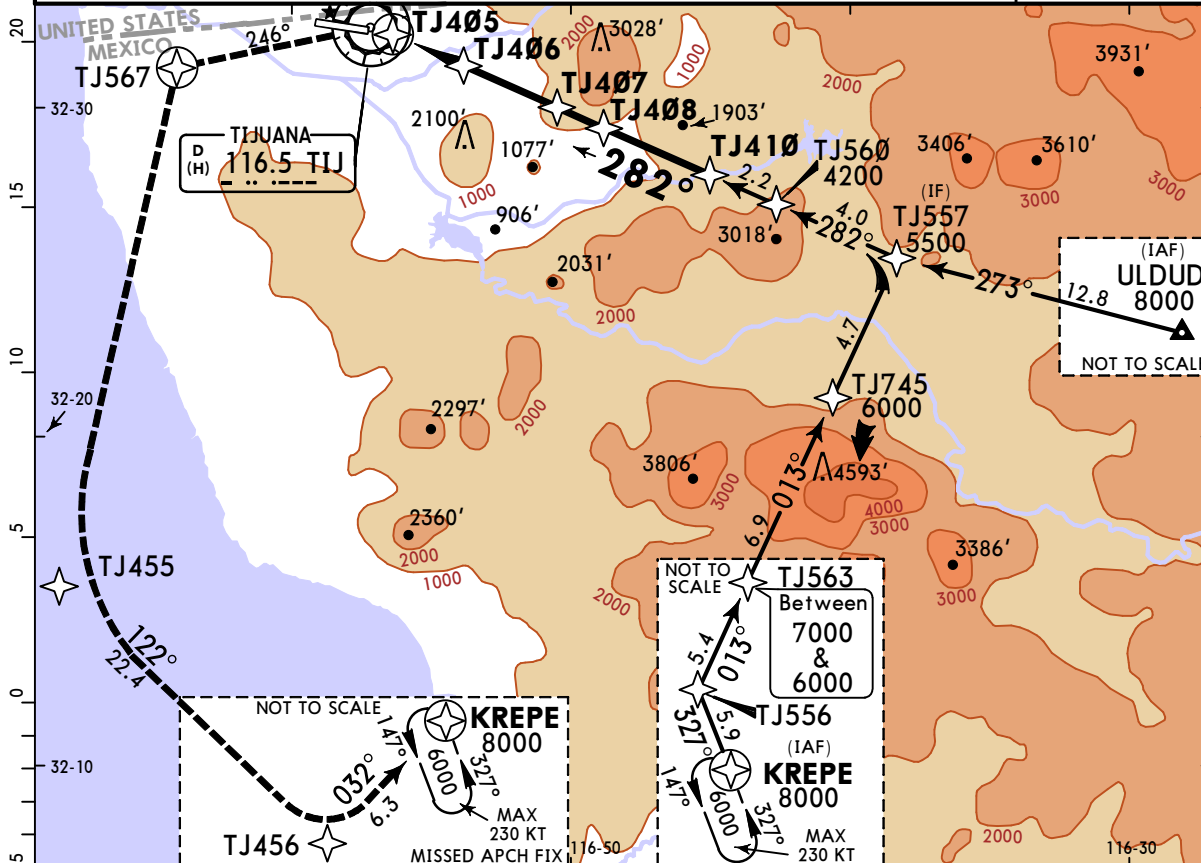
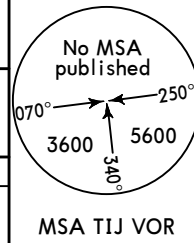


7 JUL 23
Eff 13 Jul

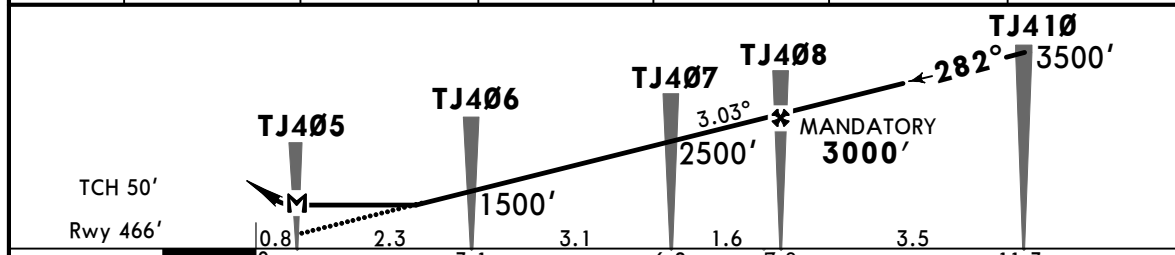
TIJUANA, MEXICO

RNP Rwy 27

ATIS 127.9		TIJUANA Approach (R) 119.5 120.3		TIJUANA Tower 118.1	
RNAV	Final Apch Crs 282°	TJ408 MANDATORY 3000' (2534')	MDA(H) 1000' (534')	Apt Elev 487' Rwy 466'	
MISSED APCH: Turn LEFT climbing on course 246° to TJ567 and continue to the corresponding waypoints to KREPE at 6000' and continue in holding pattern.					
RNP Apch Alt Set: IN (MB on req) Rwy Elev: 17 MB Trans level: FL 195 Trans alt: 18500' 1. GNSS Required and Operative Radar. 2. Do not use radio altimeter due to orographic conditions. 3. CAUTION: Light, low altitude, uncontrolled, US VFR traffic patrolling North side of the border.					



DIST to THR	3.0	4.0	5.0	6.0	7.0	7.8
ALTITUDE	1470'	1790'	2110'	2430'	2750'	3000'



Gnd speed-Kts	70	90	100	120	140	160
Descent Angle	3.03°	375	482	536	643	750
MAP at TJ405						
FAF to MAP	7.8	6:41	5:12	4:41	3:54	3:21

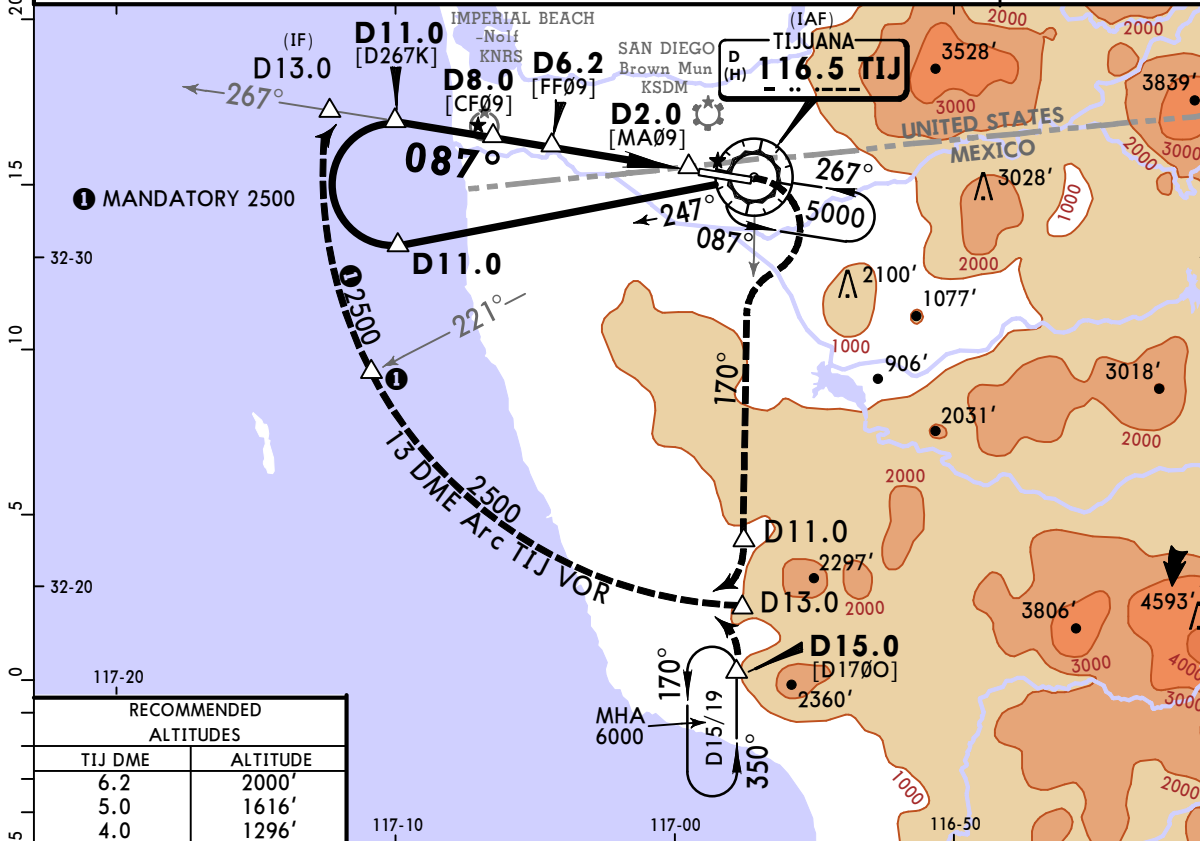
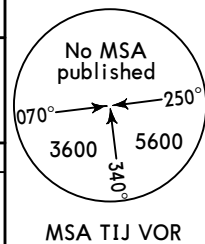
STRAIGHT-IN LANDING RWY 27			CIRCLE-TO-LAND		
LNAV MDA(H) 1000' (534')			Not Authorized North of Rwy 09-27		
	ALS out	Max Kts	MDA(H)		
A	1	90	1180'(693') - 1		
B		120			
C	1½	140	1180'(693') - 2		
D	1¾	165	1180'(693') - 2¼		

MMTJ/TIJ
GEN ABELARDO L RODRIGUEZ INTL

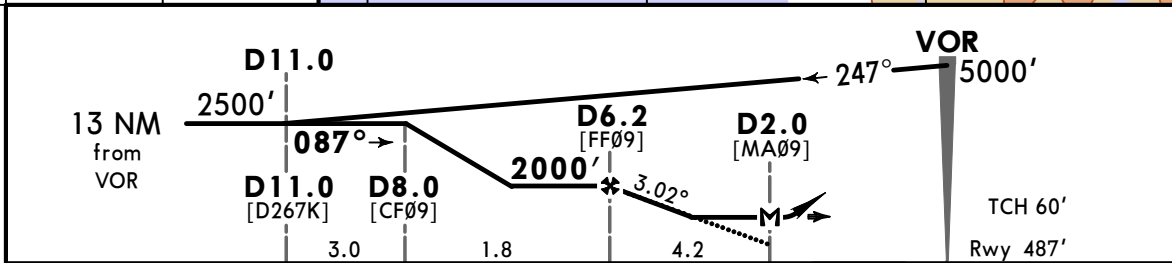
JEPPESSEN
 5 JUL 24
13-1 Eff 11 Jul

TIJUANA, MEXICO
VOR Z Rwy 09

ATIS 127.9		TIJUANA Approach (R) 119.5 120.3		TIJUANA Tower 118.1	
VOR TIJ 116.5	Final Apch Crs 087°	D6.2 2000' (1513')	MDA(H) 1120' (633')	Apt Elev 487' Rwy 487'	
MISSED APCH: Climbing RIGHT turn to intercept TIJ VOR R-170 outbound to D11.0, turn RIGHT and join the 13 DME Arc or continue on TIJ VOR R-170 to hold at D15/19 according to ATC instructions.					
Alt Set: IN (MB on req)		Trans level: FL195		Trans alt: 18500'	
1. DME required. 2. Do not use radio altimeter due to orographic conditions. 3. CAUTION: Light, low altitude, uncontrolled, US VFR traffic patrolling North side of the border. 4. CAUTION: Before crossing the border A) Activate transponder code assigned by TIJ APCH. B) Fly level at 2500' in turn. 5. Do not use both holding patterns at the same altitude simultaneously.					



RECOMMENDED ALTITUDES	
TIJ DME	ALTITUDE
6.2	2000'
5.0	1616'
4.0	1296'



Gnd speed-Kts	70	90	100	120	140	160
Descent Angle 3.02°	374	481	534	641	748	855
MAP at D2.0						
D6.2 to MAP	4.2	3:36	2:48	2:31	2:06	1:48

SALS PAPI

RT

TIJ **116.5** **D11.0**

R-170

TCH 60'

Rwy 487'

STRAIGHT-IN LANDING RWY 09			CIRCLE-TO-LAND	
MDA(H) 1120' (633')			Not Authorized North of Rwy 09-27	
	ALS out	Max Kts	MDA(H)	
A		90	1180' (693') - 1	
B		120	1180' (693') - 2	
C	1¾	140	1180' (693') - 2	
D	2	165	1180' (693') - 2¼	

MMTJ/TIJ

GEN ABELARDO L RODRIGUEZ INTL



5 JUL 24
Eff 11 Jul

TIJUANA, MEXICO

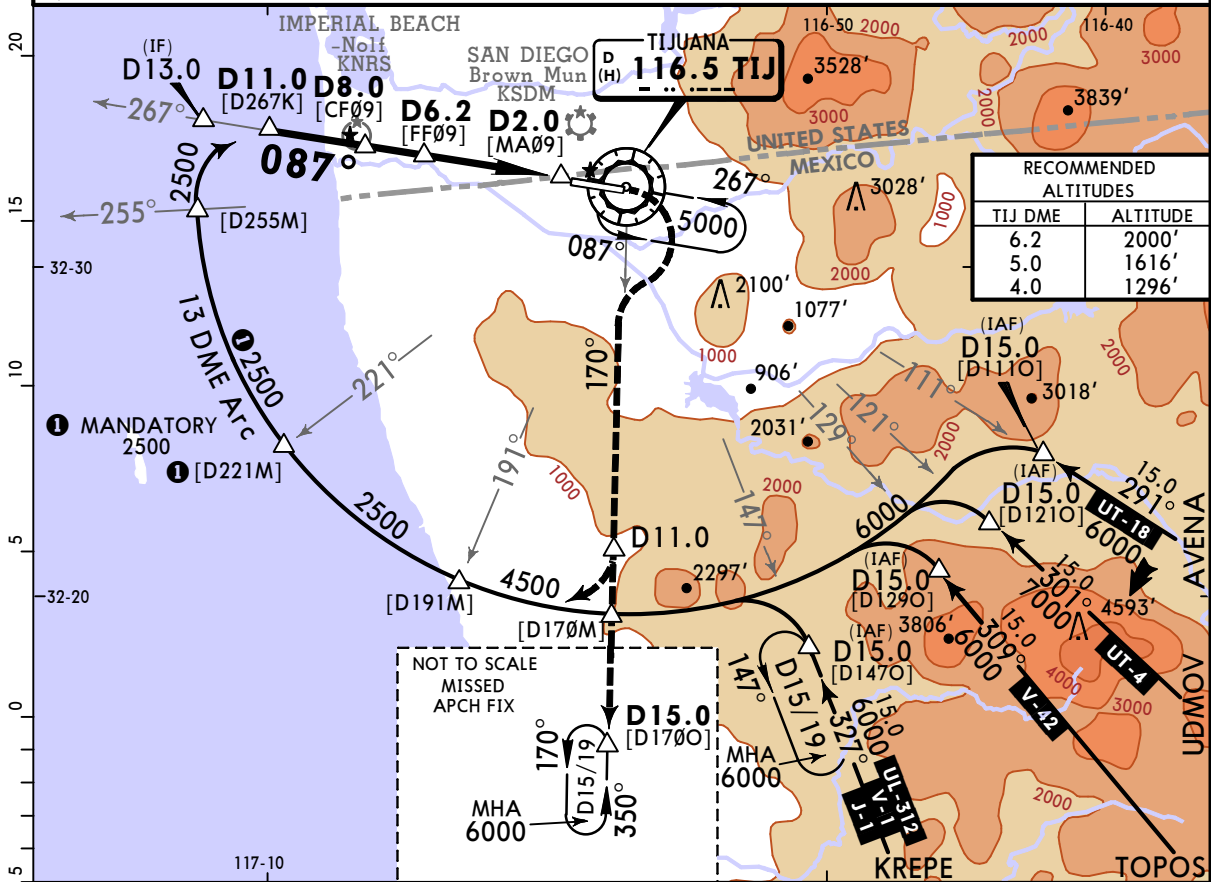
VOR Y Rwy 09

ATIS 127.9		TIJUANA Approach (R) 119.5 120.3		TIJUANA Tower 118.1	
VOR TIJ 116.5	Final Apch Crs 087°	D6.2 2000' (1513')	MDA(H) 1120' (633')	Apt Elev 487' Rwy 487'	
MISSED APCH: Climbing RIGHT turn to intercept TIJ VOR R-170 outbound to D11.0, turn RIGHT and join the 13 DME Arc or continue on TIJ VOR R-170 to hold at D15/19, according to ATC instructions.					<p>No MSA published MSA TIJ VOR</p>

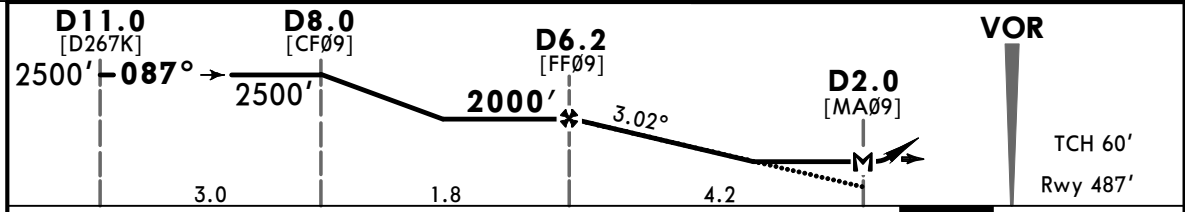
BRIEFING STRIP™

Alt Set: IN (MB on req) Trans level: FL195 Trans alt: 18500'

1. DME required. 2. Do not use radio altimeter due to orographic conditions. 3. CAUTION: Light, low altitude, uncontrolled, US VFR traffic patrolling north side of the border. 4. In case of DME failure at any point in the procedure maintain last assigned altitude and proceed to station in accordance with ATC instructions. 5. CAUTION: Before crossing the border: A) Activate transponder code assigned by TIJ APCH. B) Fly level at 2500' in turn. 6. Do not use both holding patterns at the same altitude simultaneously.



TIJ DME	ALTITUDE
6.2	2000'
5.0	1616'
4.0	1296'



Gnd speed-Kts	70	90	100	120	140	160	SALS PAPI	RT	TIJ 116.5 R-170	D11.0
Descent Angle	3.02°	374	481	534	641	748				
MAP at D2.0										
D6.2 to MAP	4.2	3:36	2:48	2:31	2:06	1:48				

STRAIGHT-IN LANDING RWY 09			CIRCLE-TO-LAND		
MDA(H) 1120' (633')			Not Authorized North of Rwy 09-27		
	ALS out	Max Kts	MDA(H)		
A		90	1180'(693') - 1		
B		120	1180'(693') - 2		
C	1¾	140	1180'(693') - 2		
D	2	165	1180'(693') - 2¼		

CHANGES: Procedure title, DME requirement note added.

MMTJ/TIJ

GEN ABELARDO L RODRIGUEZ INTL

JEPPESSEN

13-3

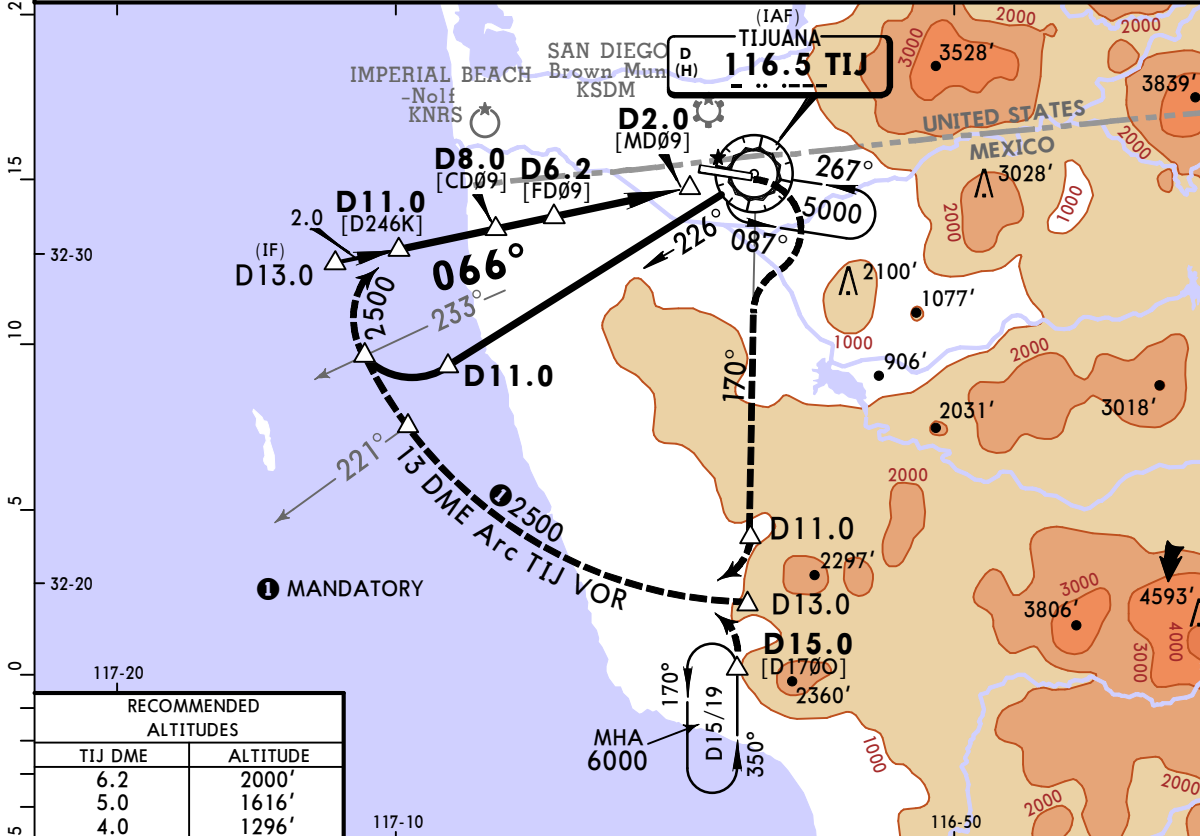
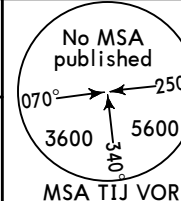
5 JUL 24

Eff 11 Jul

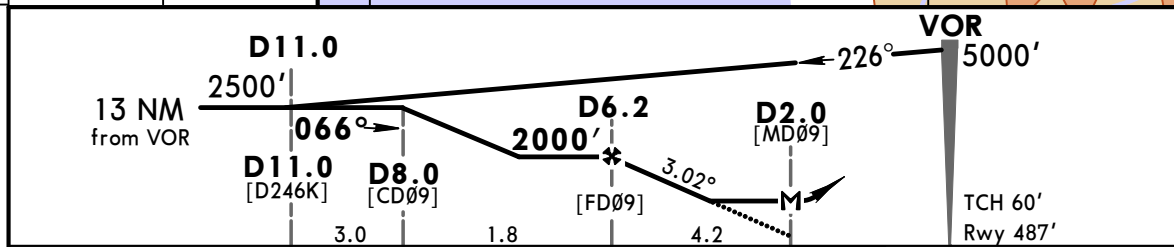
TIJUANA, MEXICO

VOR X RWY 09

ATIS 127.9		TIJUANA Approach (R) 119.5 120.3		TIJUANA Tower 118.1	
VOR TIJ 116.5	Final Apch Crs 066°	D6.2 2000' (1513')	MDA(H) Refer to Minimums	Apt Elev 487' Rwy 487'	
<p>MISSED APCH: Climbing RIGHT turn to intercept TIJ VOR R-170 outbound to D11.0, turn RIGHT and join the 13 DME Arc or continue on TIJ VOR R-170 to hold at D15.0, according to ATC instruction.</p>					
Alt Set: IN (MB on req)		Apt Elev: 18 MB		Trans level: FL195	
<p>1. DME required. 2. Do not use radio altimeter due to orographic conditions. 3. CAUTION: Light, low altitude, uncontrolled, US VFR traffic patrolling North side of the border. 4. Do not use both holding patterns at the same altitude simultaneously. 5. In case of DME failure during the procedure, maintain last assigned altitude and proceed to the station in accordance with ATC instructions. 6. CAUTION: Upon establishing visual contact with the runway, do not depart from the final approach radial until D5.0. 7. CAUTION: MAX 160 KIAS (or minimum maneuvering) on approach after D15.0.</p>					



RECOMMENDED ALTITUDES	
TIJ DME	ALTITUDE
6.2	2000'
5.0	1616'
4.0	1296'

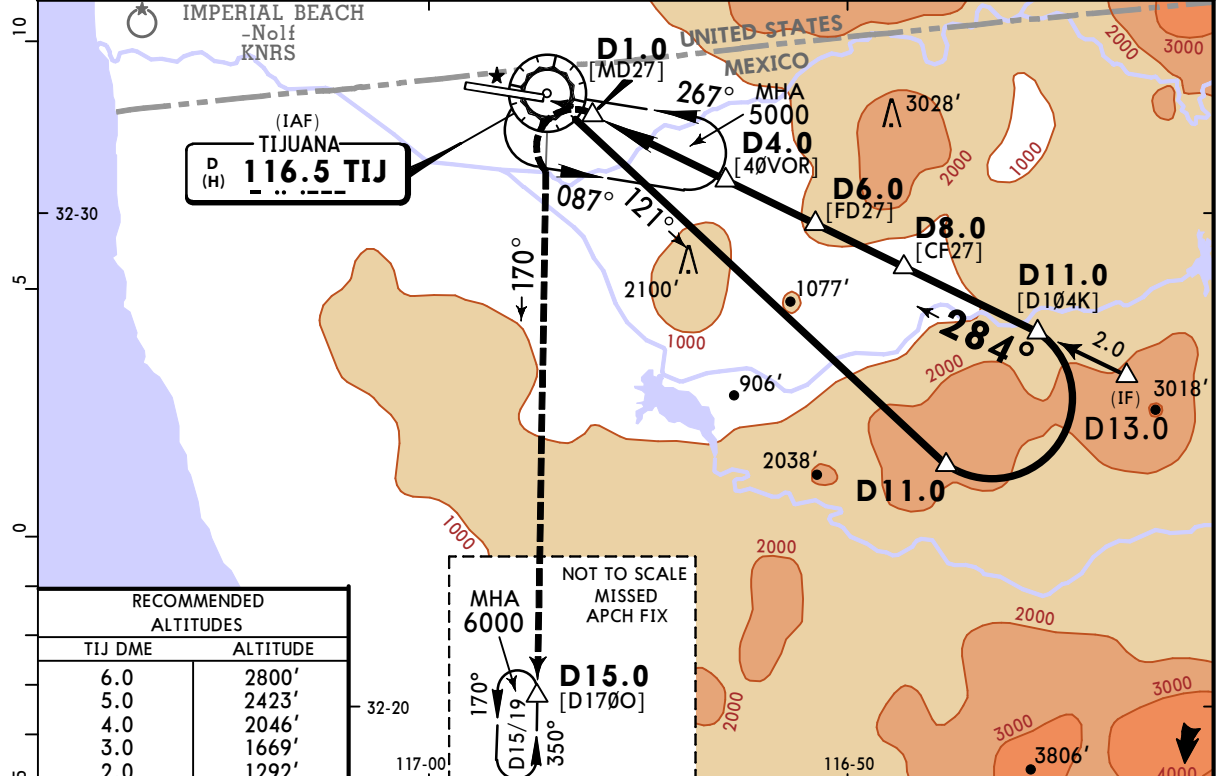
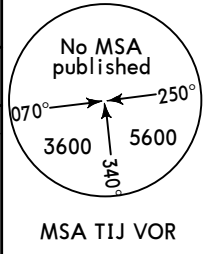


Gnd speed-Kts	70	90	100	120	140	160	Lighting - Refer to Airport Chart	RT	TIJ 116.5	D11.0
Descent Angle	3.02°	374	481	534	641	748				
MAP at D2.0										

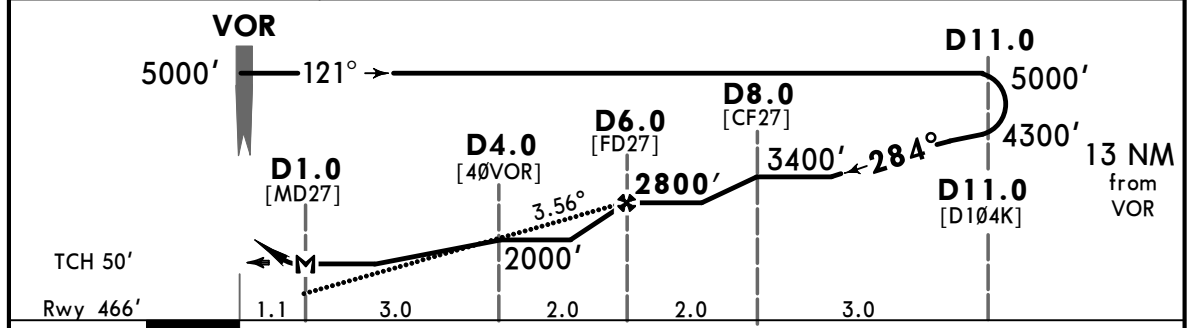
CIRCLE-TO-LAND	
Not Authorized North of Rwy 09-27	
MDA(H)	
A	90 1180' (693') -1
B	120 1180' (693') -2
C	140 1180' (693') -2
D	165 1180' (693') -2¼

MMTJ/TIJ **JEPPESEN** **TIJUANA, MEXICO**
GEN ABELARDO L RODRIGUEZ INTL (13-4) **5 JUL 24** **VOR Z Rwy 27**
Eff 11 Jul

ATIS 127.9		TIJUANA Approach (R) 119.5 120.3		TIJUANA Tower 118.1
VOR TIJ 116.5	Final Apch Crs 284°	D6.0 2800' (2334')	MDA(H) 1000' (534')	Apt Elev 487' Rwy 466'
MISSED APCH: Turn LEFT and climb outbound on TIJ VOR R-170 to hold at D15.0 or in accordance with ATC instructions.				
Alt Set: IN (MB on req)		Trans level: FL195		Trans alt: 18500'
1. DME required. 2. Do not use radio altimeter due to orographic conditions. 3. CAUTION: Upon establishing visual contact with the Rwy, do not depart the final approach radial until D5.0. 4. CAUTION: Light, low altitude, uncontrolled, US VFR traffic patrolling north side of the border. 5. CAUTION: Max 160 KIAS on apch after D15.0. 6. Do not use both holding patterns at the same altitude simultaneously. 7. In case of DME failure during the procedure, maintain last assigned altitude and proceed to the station in accordance with ATC instructions.				



RECOMMENDED ALTITUDES	
TIJ DME	ALTITUDE
6.0	2800'
5.0	2423'
4.0	2046'
3.0	1669'
2.0	1292'

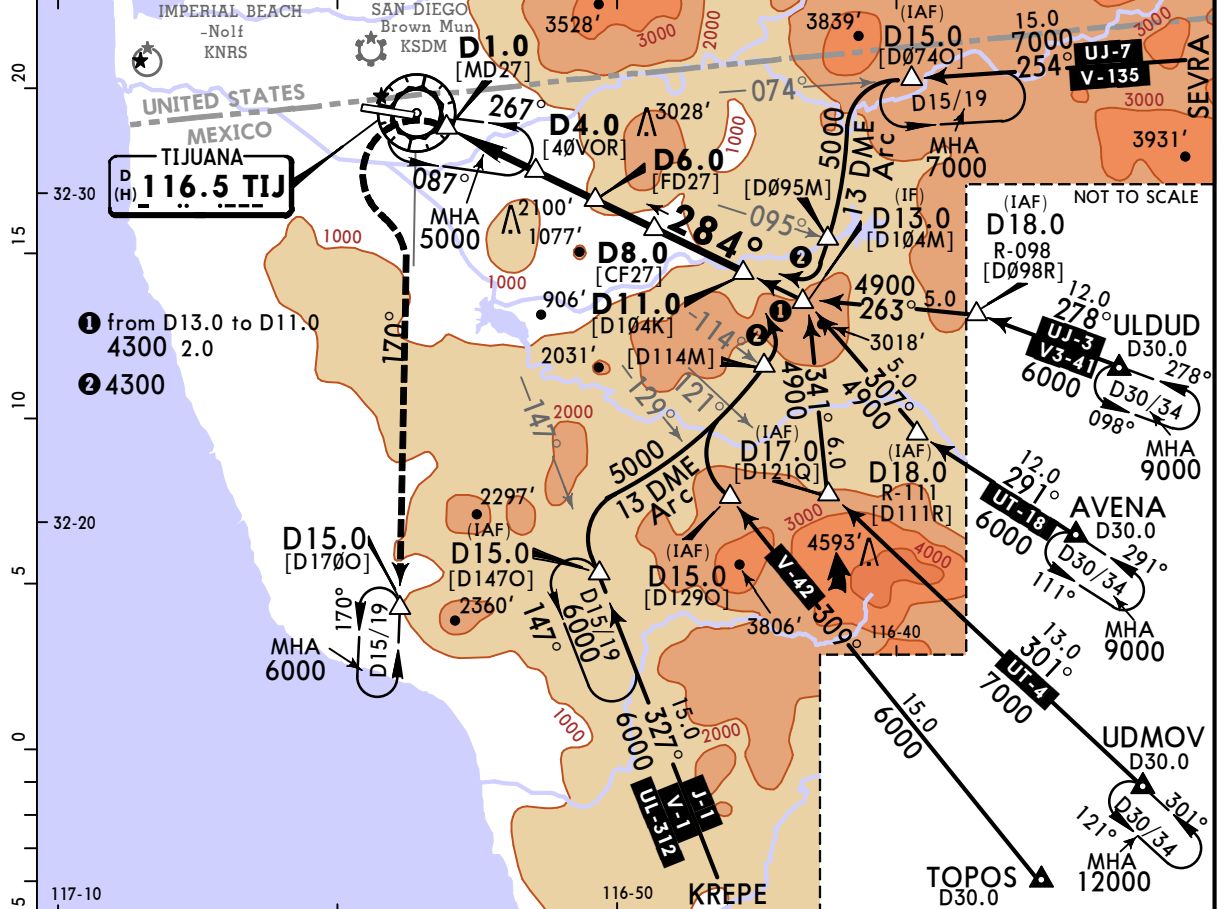
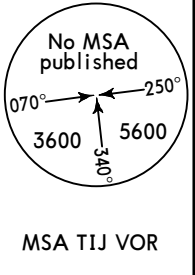


Gnd speed-Kts	70	90	100	120	140	160				
Descent Angle	3.56°	441	567	630	756	882	1008			
MAP at D1.0										
D6.0 to MAP	5.0	4:17	3:20	3:00	2:30	2:09	1:53			

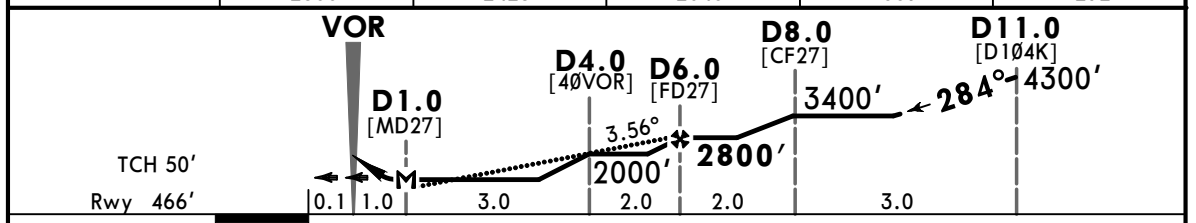
STRAIGHT-IN LANDING RWY 27				CIRCLE-TO-LAND Not Authorized North of Rwy 09-27			
MDA(H) 1000' (534')				MDA(H)			
ALS out				Max Kts			
A	1			90	1180' (693') -1		
B	1			120	1180' (693') -1		
C	1½			140	1180' (693') -2		
D	1¾			165	1180' (693') -2¼		

MMTJ/TIJ **JEPPESEN** **TIJUANA, MEXICO**
GEN ABELARDO L RODRIGUEZ INTL **(13-5)** **5 JUL 24** **VOR Y Rwy 27**
Eff 11 Jul

ATIS 127.9		TIJUANA Approach (R) 119.5 120.3		TIJUANA Tower 118.1	
VOR TIJ 116.5	Final Apch Crs 284°	D6.0 2800' (2334')	MDA(H) 1000' (534')	Apt Elev 487'	Rwy 466'
MISSED APCH: Turn LEFT and climb outbound on TIJ VOR R-170 to hold at D15.0 or in accordance with ATC instructions.					
Alt Set: IN (MB on req)		Trans level: FL195		Trans alt: 18500'	
1. DME required. 2. Do not use radio altimeter due to orographic conditions. 3. CAUTION: Upon establishing visual contact with the runway do not depart from the final approach radial until D5.0. 4. In case of DME failure during the procedure, maintain last assigned altitude and proceed to the station in accordance with ATC instructions. 5. CAUTION: Light, low altitude, uncontrolled US VFR traffic patrolling North side of the border. 6. Max IAS 160 Kts (or minimum maneuvering) on approach after D15.0. 7. Do not use both holding patterns at the same altitude simultaneously.					



TIJ DME	6.0	5.0	4.0	3.0	2.0
ALTITUDE	2800'	2423'	2046'	1669'	1292'



Gnd speed-Kts	70	90	100	120	140	160
Descent Angle	3.56°	441	567	630	756	1008
MAP at D1.0						
D6.0 to MAP	5.0	4:17	3:20	3:00	2:30	2:09

STRAIGHT-IN LANDING RWY 27			CIRCLE-TO-LAND		
MDA(H) 1000' (534')			Not Authorized North of Rwy 09-27		
ALS out			MDA(H)		
A	1		Max Kts	90	
B	1		120	1180' (693') -1	
C	1 1/2		140	1180' (693') -2	
D	1 3/4		165	1180' (693') -2 1/4	