

General Information

Location: REYNOSA MEX
ICAO/IATA: MMRX / REX
Lat/Long: N26° 00.5', W098° 13.7'
Elevation: 139 ft

Airport Use: Public
Daylight Savings: Observed
UTC Conversion: +6:00 = UTC
Magnetic Variation: 8.0° E
Sectional Chart: Brownsville

Fuel Types: 100-130 Octane, Jet A
Customs: Yes
Airport Type: IFR
Landing Fee: No
Control Tower: Yes
Jet Start Unit: No
LLWS Alert: No
Beacon: Yes

Sunrise: 1237 Z
Sunset: 2357 Z

Runway Information

Runway: 13
Length x Width: 6214 ft x 148 ft
Surface Type: asphalt
TDZ-Elev: 139 ft
Lighting: Edge, REIL

Runway: 31
Length x Width: 6214 ft x 148 ft
Surface Type: asphalt
TDZ-Elev: 139 ft
Lighting: Edge, ALS, REIL

Communication Information

Reynosa Tower: 118.800
Reynosa Approach: 127.200
Monterrey Control ACC: 124.500 RCO
Monterrey Control ACC: 125.425 RCO

Monterrey Control ACC: 127.400 RCO

TMA

REYNOSA, MEXICO

GEN LUCIO BLANCO INTL



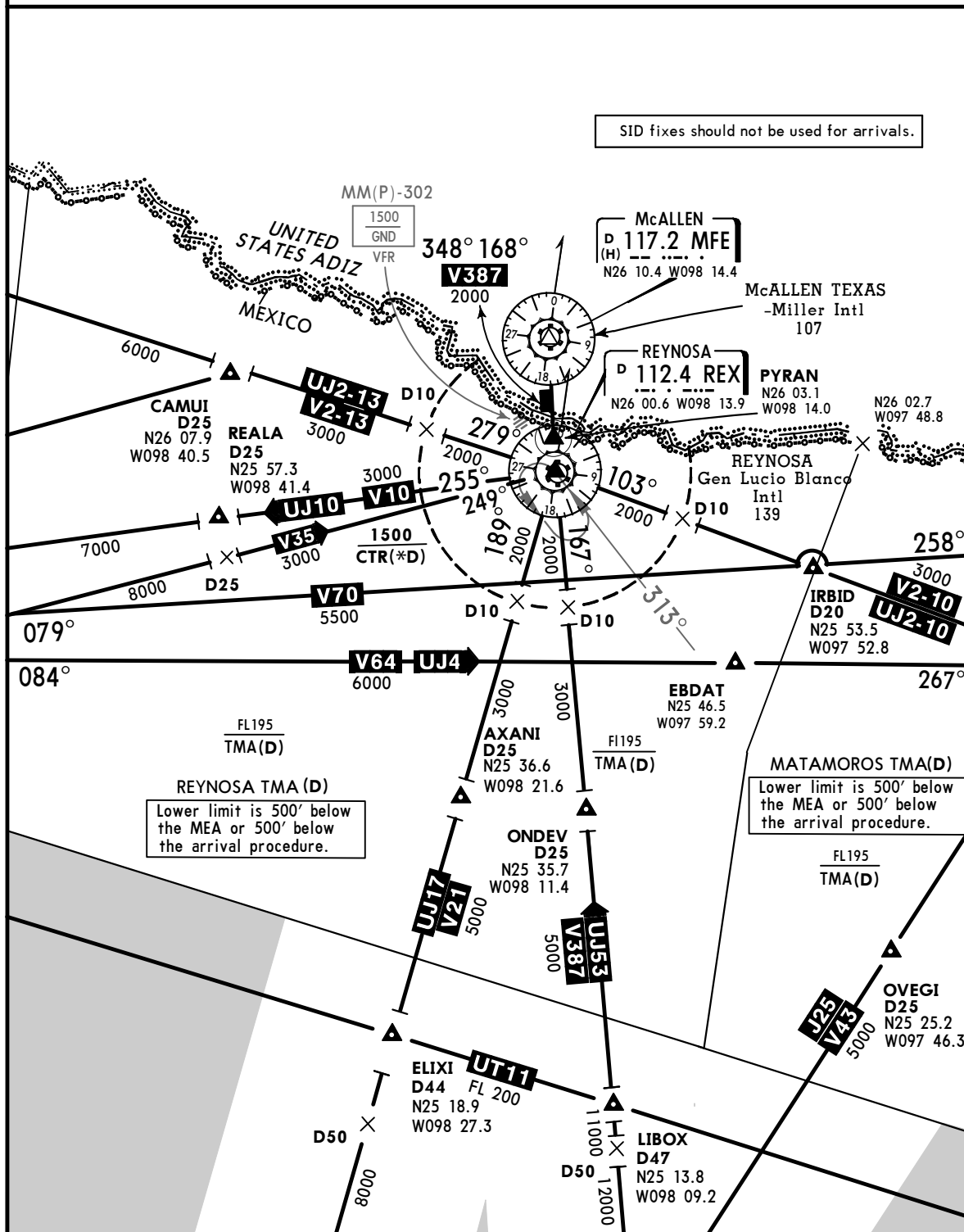
28 JUN 19 **10-1B**

*REYNOSA Approach
127.2

SPEED RESTRICTIONS WITHIN MEXICO AIRSPACE

- Maximum IAS unless otherwise depicted or authorized by ATC
- Below 3000' AGL within 10NM of any airport.....200 KTS
 - Below 10000' MSL within Mexico Airspace.....250 KTS
 - Below 10000' AGL within 30NM of any airport.....250 KTS
- WITHIN REYNOSA TMA**
- At or below 3100' MSL and within 10NM of REX VORDME.....200 KTS
 - At or below 10500' MSL within 30NM of REX VORDME.....250 KTS
- WITHIN MATAMOROS TMA**
- At or below 3000' MSL and within 10NM of MAM VORDME.....200 KTS
 - At or below 10000' MSL within 30NM of MAM VORDME.....250 KTS

SID fixes should not be used for arrivals.



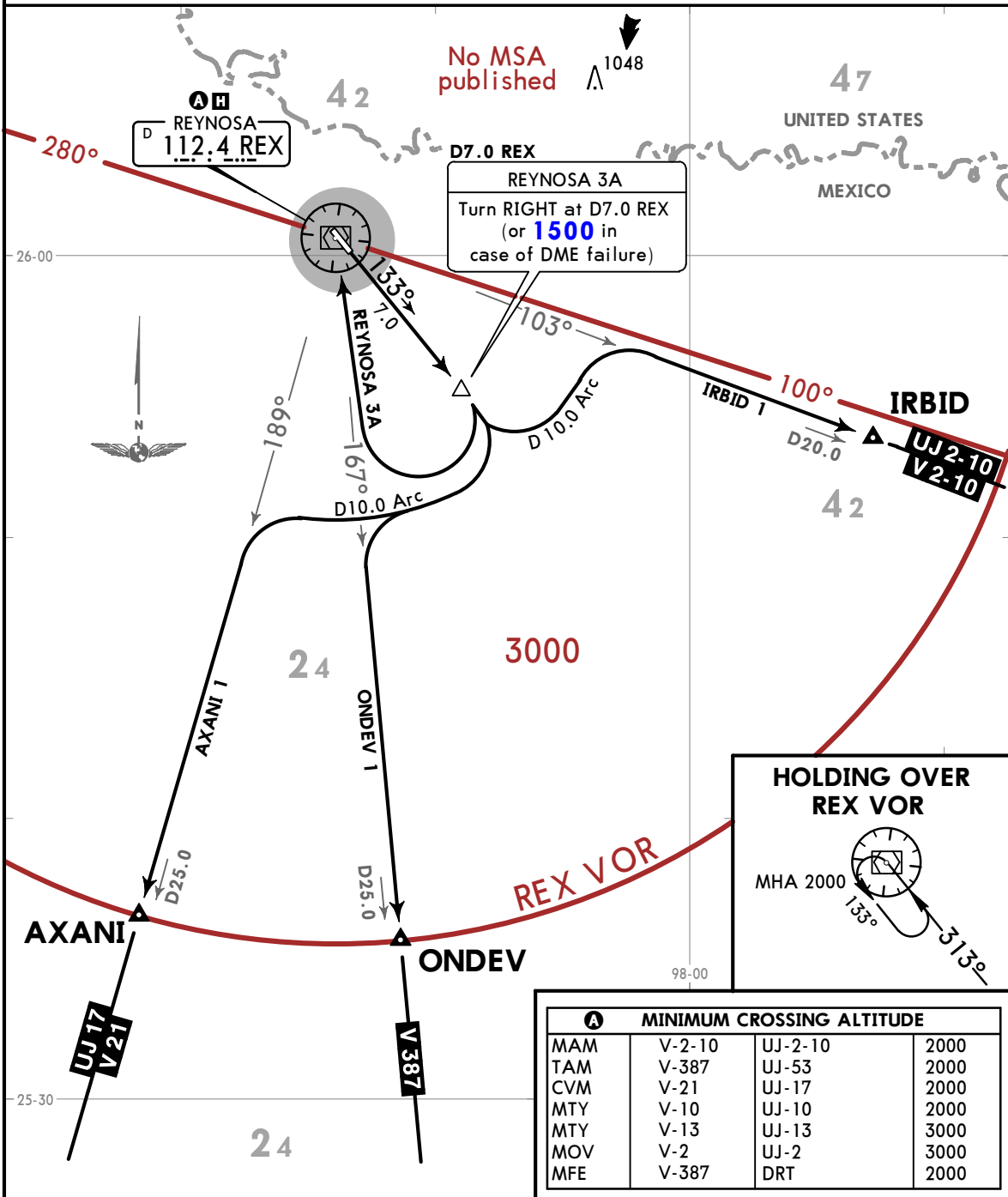
MMRX/REX
GEN LUCIO BLANCO INTL

JEPPESEN
 29 DEC 17 **10-3** Eff 4 Jan

REYNOSA, MEXICO
SID

Apt Elev 139 Trans alt: 18500

**AXANI 1 (AXANI1), IRBID 1 (IRBID1)
 ONDEV 1 (ONDEV1), REYNOSA 3A (REX3A)
 DEPARTURES
 (RWY 13)**



SID	INITIAL CLIMB
AXANI 1 ONDEV 1	Climb on REX R133 to D7.0 REX, turn RIGHT and proceed on the D10.0 Arc REX to intercept the corresponding radial from REX VOR to AXANI or ONDEV and continue on assigned route or ATC instructions.
IRBID 1	Climb on REX R133 to D7.0 REX, turn LEFT and proceed on the D10.0 Arc REX to intercept REX R103 to IRBID and continue on assigned route or ATC instructions.
REYNOSA 3A	Climb on REX R133 to D7.0 REX (or 1500 in case of DME failure), then turn RIGHT within 10 NM to REX VOR. Depart REX VOR at the MCA A for the assigned route or ATC instructions.

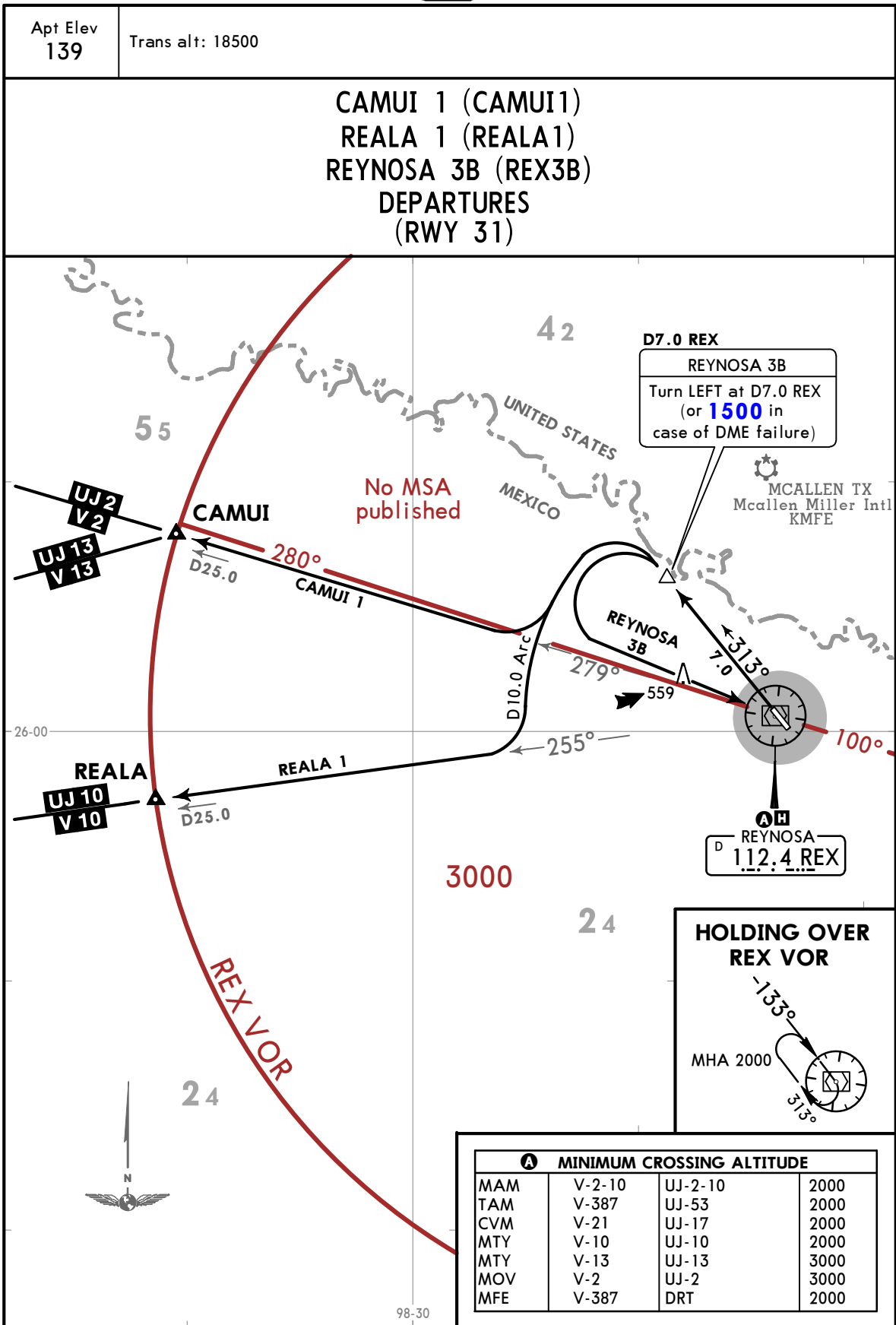
CHANGES: New format.

MMRX/REX
GEN LUCIO BLANCO INTL

JEPPESEN
29 DEC 17 10-3A Eff 4 Jan

REYNOSA, MEXICO

SID



SID	INITIAL CLIMB
CAMUI 1 REALA 1	Climb on REX R313 to D7.0 REX, turn LEFT and proceed on the D10.0 Arc REX to intercept the corresponding radial from REX VOR to CAMUI or REALA and continue on assigned route or ATC instructions.
REYNOSA 3B	Climb on REX R313 to D7.0 REX (or 1500 in case of DME failure), then turn LEFT within 10 NM to REX VOR. Depart REX VOR at the MCA A for the assigned route or ATC instructions.

MMRX/REX

Apt Elev 139'
N26 00.5 W098 13.7

JEPPESEN

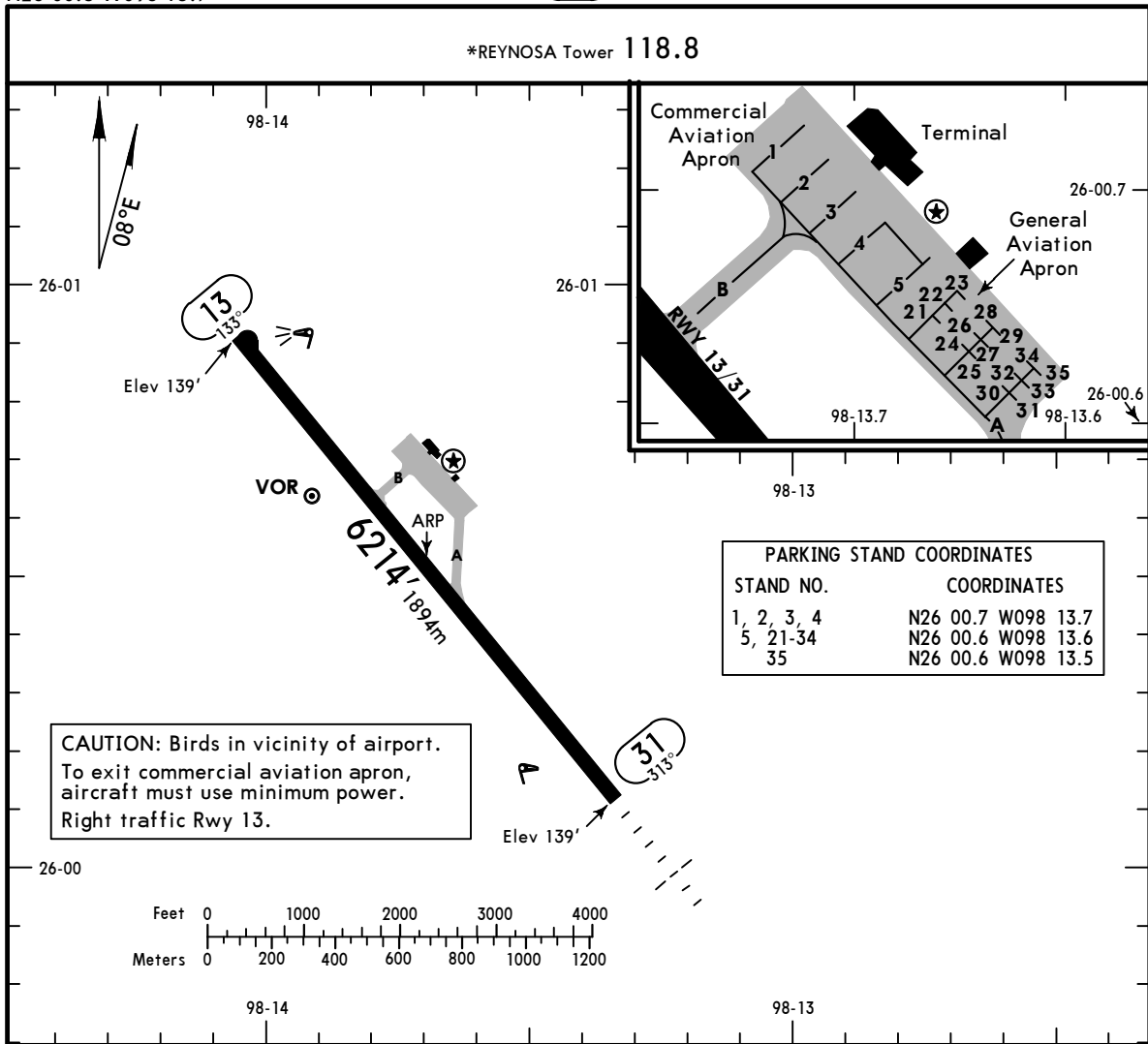
13 MAY 22

10-9

Eff 19 May

REYNOSA, MEXICO

GEN LUCIO BLANCO INTL



ADDITIONAL RUNWAY INFORMATION

RWY		USABLE LENGTHS			WIDTH
		Threshold	Glide Slope	TAKE-OFF	
13	RL PAPI-L (angle 3.0°)				148'
31	RL SALS PAPI-L (angle 3.0°)		5099' 1554m		45m

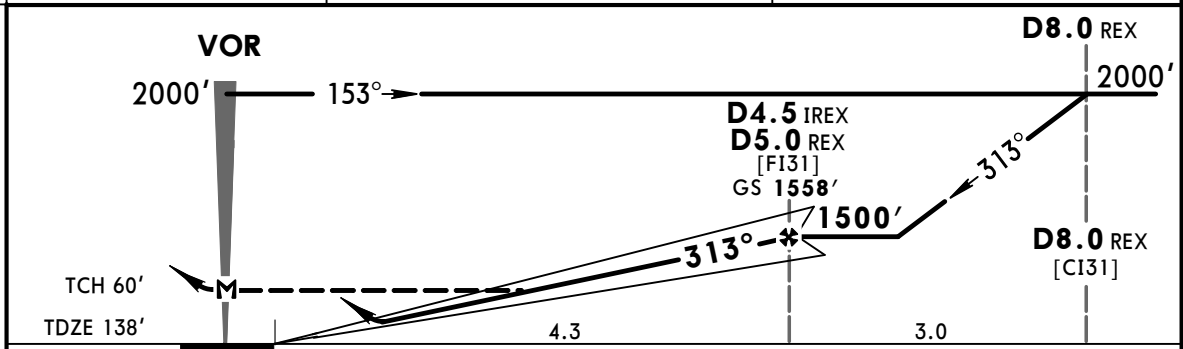
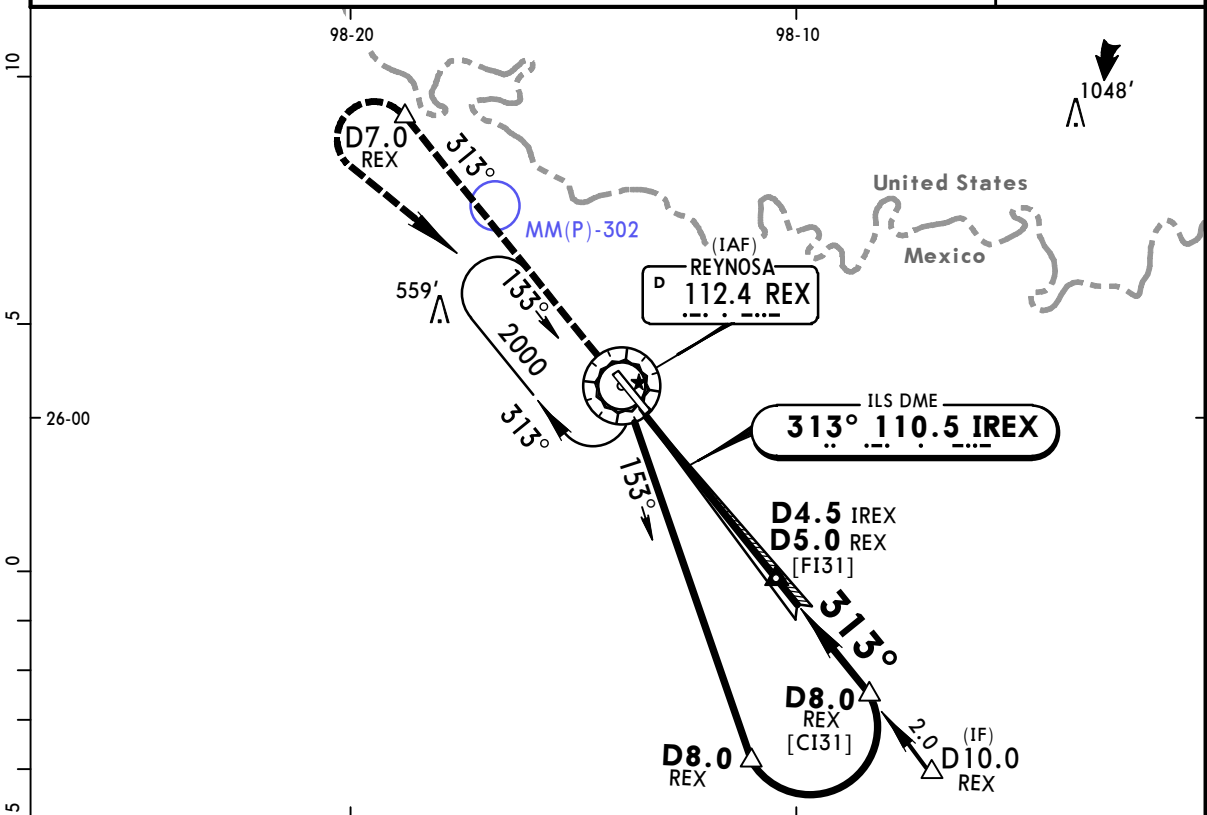
TAKE-OFF		FOR FILING AS ALTERNATE	
All Rwys			
1 & 2 Eng	300-1	A	800-2
3 & 4 Eng		B	
	C		
	D		

MMRX/REX
GEN LUCIO BLANCO INTL

JEPPESEN
 27 DEC 19
 Eff 2 Jan **(11-1)**

REYNOSA, MEXICO
ILS DME 1 or LOC Rwy 31

*REYNOSA Approach			*REYNOSA Tower		
127.2			118.8		
LOC IREX 110.5	Final Apch Crs 313°	D4.5 IREX D5.0 REX 1558' (1420')	ILS DA(H) 338' (200')	Apt Elev 139'	TDZE 138'
MISSED APCH: Climb outbound on REX VOR R-313 until D7.0, make teardrop turn to the LEFT within 10 NM and return to REX VOR at the minimum holding altitude.					
Alt Set: MB (IN on req)		TDZ Elev: 5 MB	Trans level: FL 195	Trans alt: 18500'	



Gnd speed-Kts	70	90	100	120	140	160	SSALS PAPI	↑ on REX 112.4 R-313	D7.0	
GS	3.00°	372	478	531	637	743				849
MAP at VOR or FAF to MAP	4.3	3:41	2:52	2:35	2:09	1:51				1:37

STRAIGHT-IN LANDING RWY 31				CIRCLE-TO-LAND	
ILS		LOC (GS out)		Max Kts	MDA(H)
DA(H) 338' (200')		MDA(H) 540' (402')			
FULL	ALS out	ALS out	ALS out		
A			1	90	660' (521') - 1
B	3/4	1		120	
C			1 1/4	140	660' (521') - 1 1/2
D			1 1/2	165	700' (561') - 2

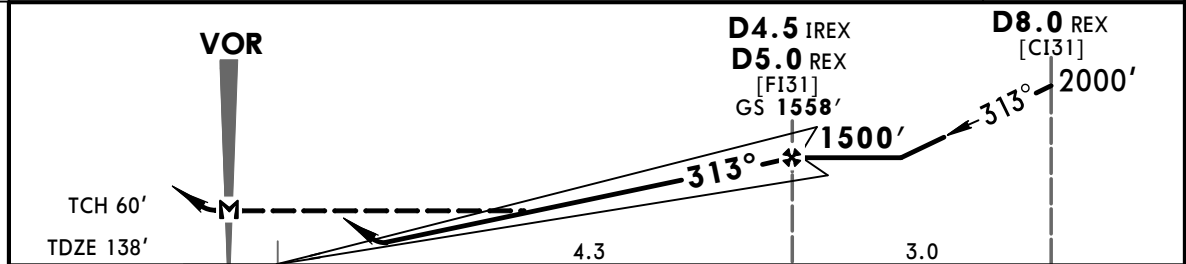
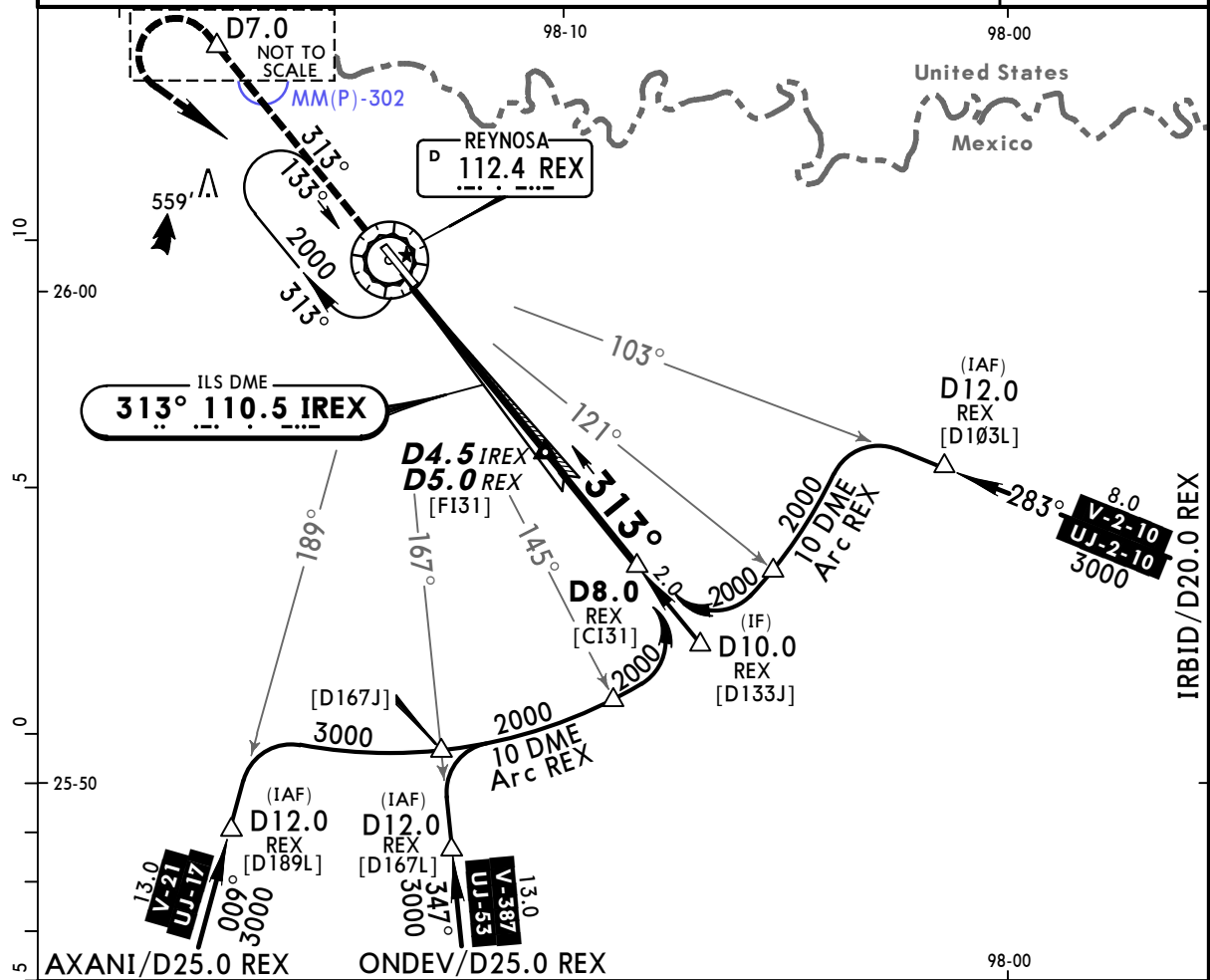
CHANGES: Procedure title, chart format.

MMRX/REX
GEN LUCIO BLANCO INTL

JEPPESEN
 27 DEC 19
 Eff 2 Jan **(11-2)**

REYNOSA, MEXICO
ILS DME 2 or LOC Rwy 31

*REYNOSA Approach 127.2				*REYNOSA Tower 118.8	
LOC IREX 110.5	Final Apch Crs 313°	D4.5 IREX D5.0 REX 1558' (1420')	ILS DA(H) 338' (200')	Apt Elev 139'	TDZE 138'
MISSED APCH: Climb outbound on REX VOR R-313 until D7.0, make teardrop turn to the LEFT within 10 NM and return to REX VOR at the minimum holding altitude.					
Alt Set: MB (IN on req)		TDZ Elev: 5 MB	Trans level: FL 195	Trans alt: 18500'	



Gnd speed-Kts	70	90	100	120	140	160	SSALS PAPI	↑ on 112.4 R-313	REX D7.0	
GS	3.00°	372	478	531	637	743				849
MAP at VOR or FAF to MAP	4.3	3:41	2:52	2:35	2:09	1:51				1:37

STRAIGHT-IN LANDING RWY 31				CIRCLE-TO-LAND	
ILS		LOC (GS out)		Max Kts	MDA(H)
FULL	ALS out	FULL	ALS out		
DA(H) 338' (200')		MDA(H) 540' (402')		90	660' (521') - 1
A				120	660' (521') - 1
B	3/4	1	1	140	660' (521') - 1 1/2
C			1 1/4	165	700' (561') - 2
D			1 1/2		

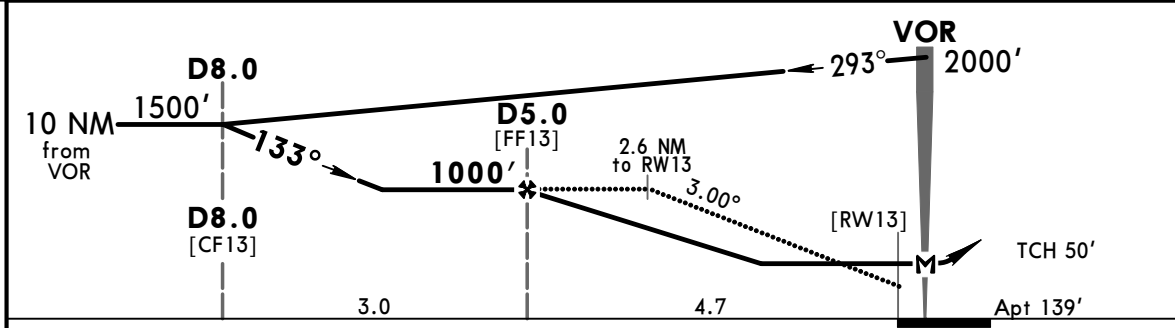
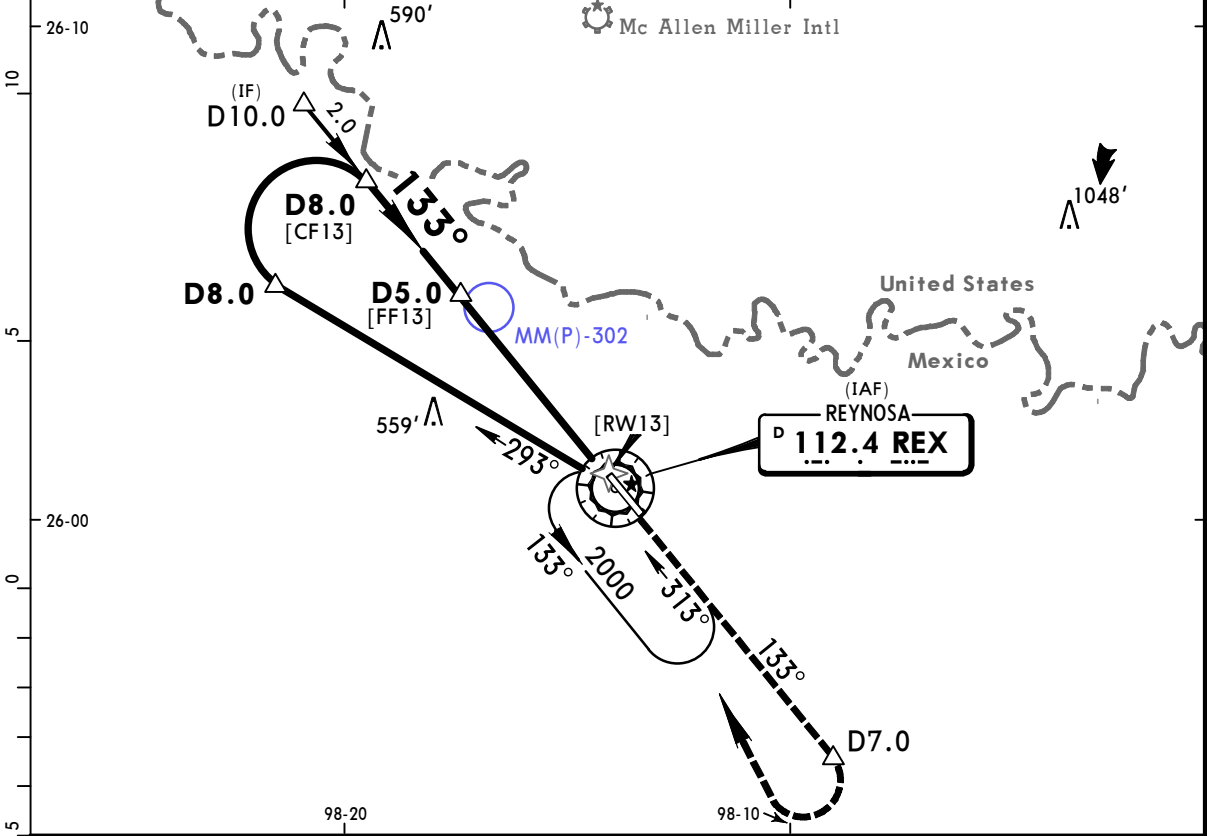
CHANGES: Procedure title, chart format.

MMRX/REX
GEN LUCIO BLANCO INTL

JEPPesen
 29 DEC 17 **13-1** Eff 4 Jan

REYNOSA, MEXICO
VOR DME 1 Rwy 13

*REYNOSA Approach				*REYNOSA Tower	
127.2				118.8	
VOR REX 112.4	Final Apch Crs 133°	Minimum Alt D5.0 1000' (861')	MDA(H) 580' (441')	Apt Elev 139'	
MISSED APCH: Climb outbound on REX VOR R-133 until D7.0, turn RIGHT within 10 NM and return to REX VOR at the minimum holding altitude.					
Alt Set: MB (IN on req) Apt Elev: 5 MB Trans level: FL 195 Trans alt: 18500' MSA REX VOR					



Gnd speed-Kts	70	90	100	120	140	160	PAPI-L	↑ on REX 112.4 R-133 D7.0	
Descent Angle	3.00°	372	478	531	637	743			849
MAP at VOR									

STRAIGHT-IN LANDING RWY 13			CIRCLE-TO-LAND	
MDA(H) 580' (441')			Max Kts	MDA(H)
A	1		90	660' (521') -1
B			120	
C	1¼		140	660' (521') -1½
D	1½		165	700' (561') -2

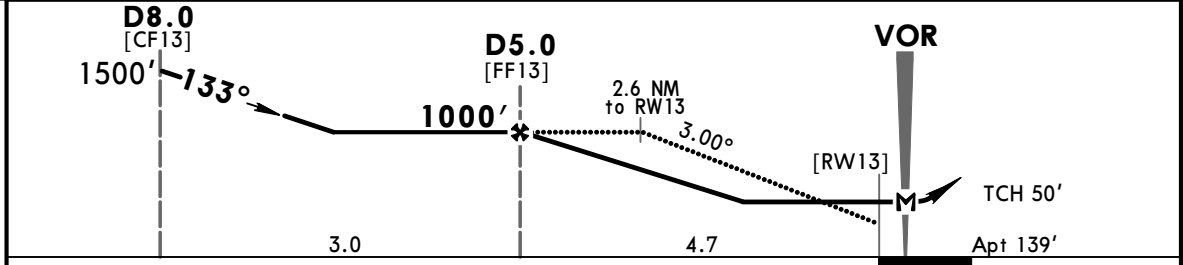
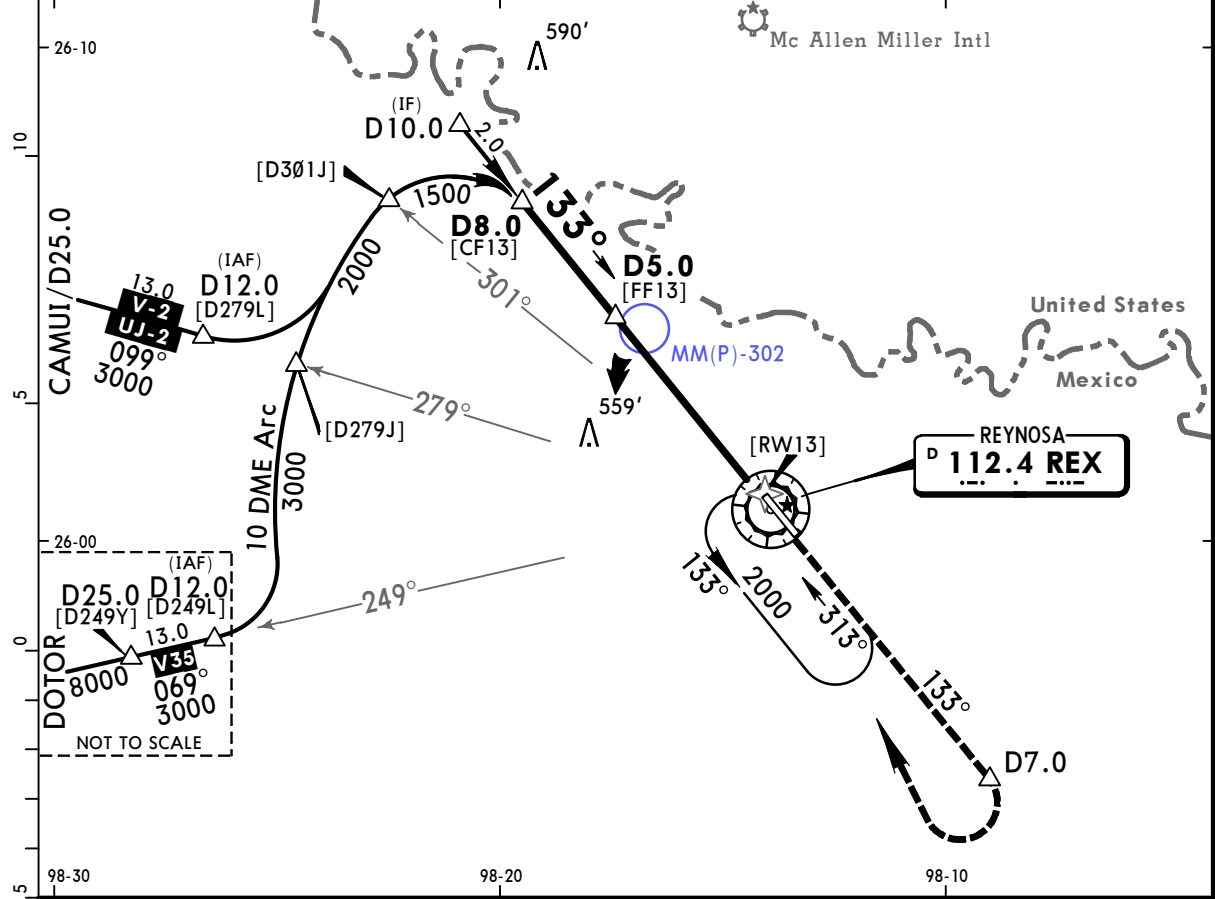
CHANGES: Database identifier.

MMRX/REX
GEN LUCIO BLANCO INTL

JEPESEN
 29 DEC 17 **13-2** Eff 4 Jan

REYNOSA, MEXICO
VOR DME 2 Rwy 13

*REYNOSA Approach				*REYNOSA Tower	
127.2				118.8	
VOR REX 112.4	Final Apch Crs 133°	Minimum Alt D5.0 1000'(861')	MDA(H) 580' (441')	Apt Elev 139'	
MISSED APCH: Climb outbound on REX VOR R-133 until D7.0, turn RIGHT within 10 NM and return to REX VOR at the minimum holding altitude.					
Alt Set: MB (IN on req)			Apt Elev: 5 MB	Trans level: FL 195	
					MSA REX VOR



Gnd speed-Kts	70	90	100	120	140	160	PAPI-L	↑ on REX 112.4 R-133	D7.0	
Descent Angle	3.00°	372	478	531	637	743				849
MAP at VOR										

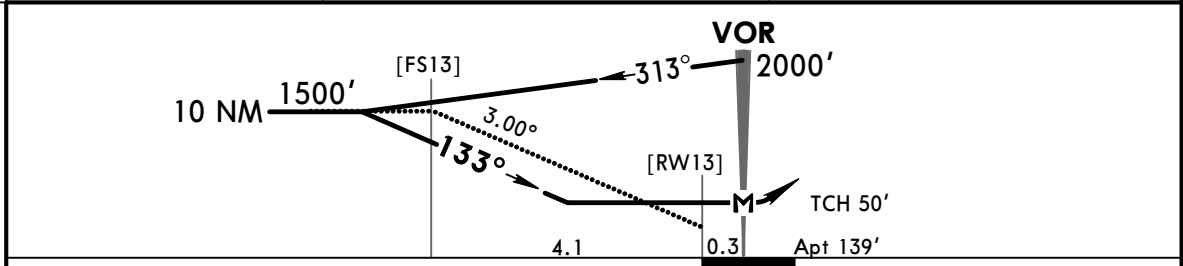
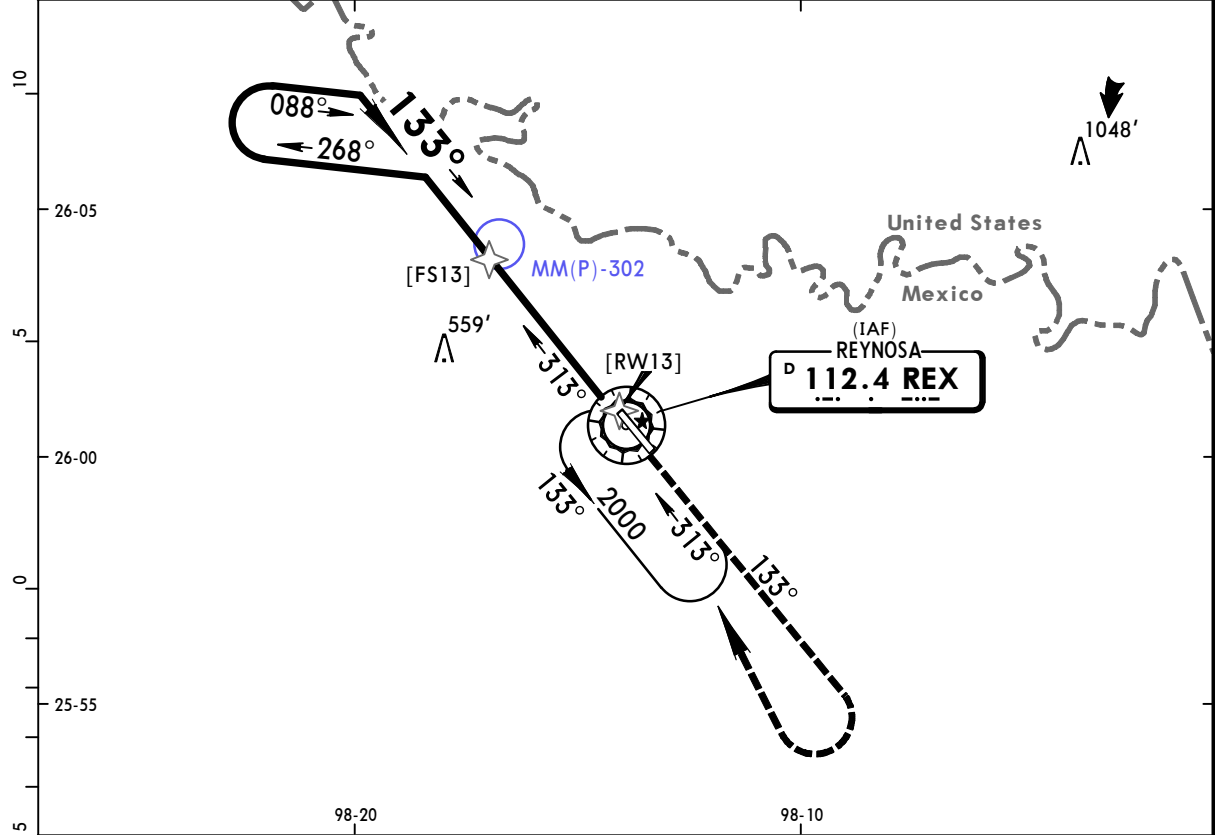
STRAIGHT-IN LANDING RWY 13			CIRCLE-TO-LAND	
MDA(H) 580' (441')			Max Kts.	MDA(H)
A	1		90	660' (521') -1
B			120	
C	1¼		140	660' (521') -1½
D	1½		165	700' (561') -2

MMRX/REX
GEN LUCIO BLANCO INTL

JEPPESEN
 29 DEC 17 **(13-3)** Eff 4 Jan

REYNOSA, MEXICO
VOR Rwy 13

*REYNOSA Approach				*REYNOSA Tower																									
127.2				118.8																									
VOR REX 112.4	Final Apch Crs 133°	No FAF	MDA(H) 820' (681')	Apt Elev 139'		<p>No MSA published</p> <p>3000'</p> <p>MSA REX VOR</p>																							
MISSED APCH: Climb outbound on REX VOR R-133, turn RIGHT within 10 NM and return to REX VOR at the minimum holding altitude.																													
<table border="1"> <thead> <tr> <th colspan="8">MAX TIME TO TURN</th> </tr> <tr> <th>Gnd speed-Kts</th> <th>80</th> <th>100</th> <th>120</th> <th>140</th> <th>160</th> <th>180</th> <th>200</th> </tr> </thead> <tbody> <tr> <td>7 NM to turn</td> <td>5:15</td> <td>4:12</td> <td>3:30</td> <td>3:00</td> <td>2:38</td> <td>2:20</td> <td>2:06</td> </tr> </tbody> </table>								MAX TIME TO TURN								Gnd speed-Kts	80	100	120	140	160	180	200	7 NM to turn	5:15	4:12	3:30	3:00	2:38
MAX TIME TO TURN																													
Gnd speed-Kts	80	100	120	140	160	180	200																						
7 NM to turn	5:15	4:12	3:30	3:00	2:38	2:20	2:06																						
Alt Set: MB (IN on req)		Apt Elev: 5 MB		Trans level: FL 195		Trans alt: 18500'																							



Gnd speed-Kts	70	90	100	120	140	160	PAPI-L		REX on 112.4 R-133
Descent Angle	3.00°	372	478	531	637	743			
MAP at VOR									

STRAIGHT-IN LANDING RWY 13			CIRCLE-TO-LAND		
MDA(H) 820' (681')			MDA(H)		
A	1	90	820' (681') -1		
B		120	820' (681') -2		
C	2	140	820' (681') -2		
D	2 1/4	165	820' (681') -2 1/4		

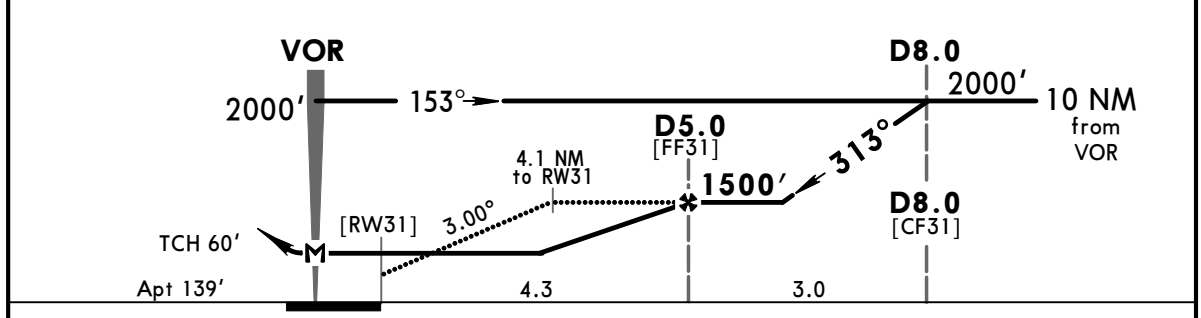
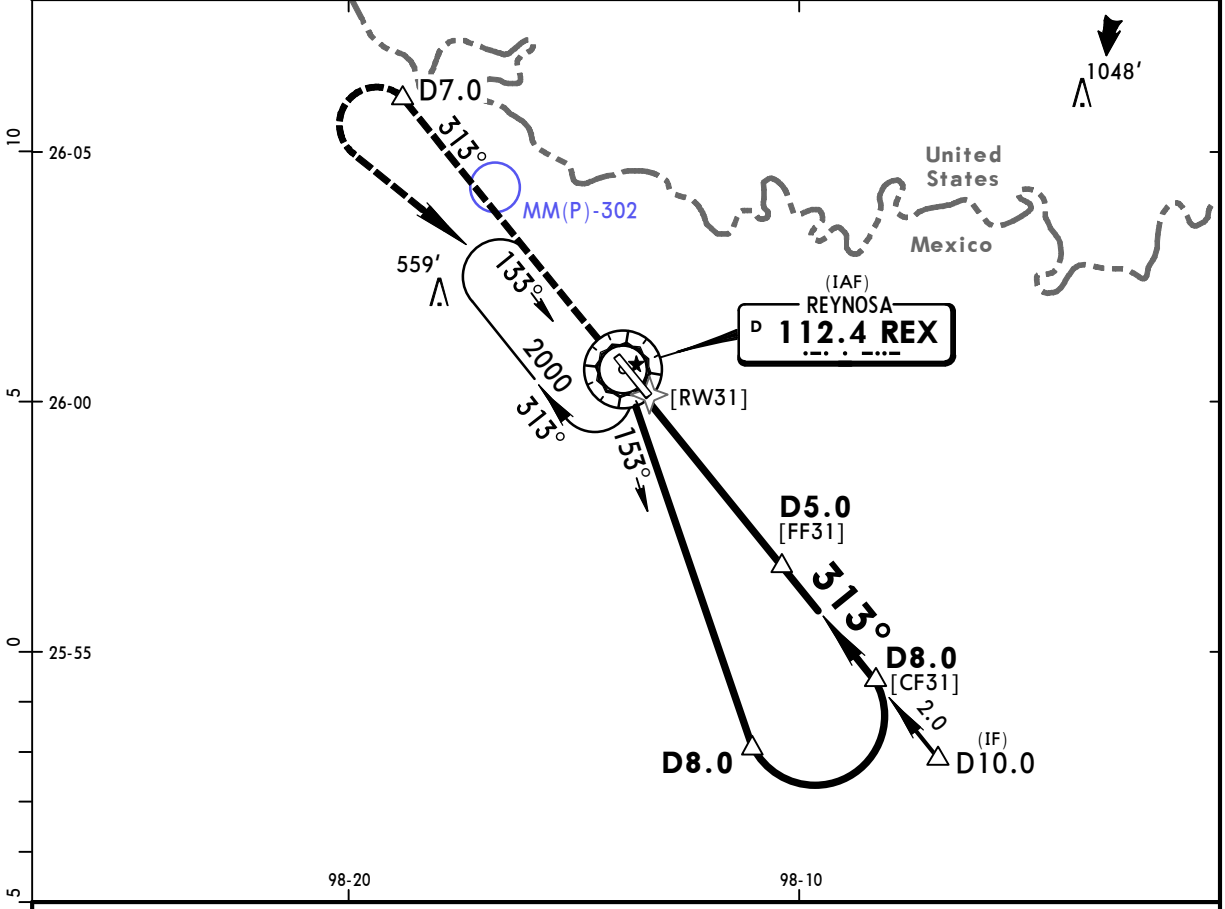
CHANGES: None.

MMRX/REX
GEN LUCIO BLANCO INTL

JEPPESEN
 29 DEC 17 **(13-4)** Eff 4 Jan

REYNOSA, MEXICO
VOR DME 1 Rwy 31

*REYNOSA Approach 127.2				*REYNOSA Tower 118.8	
VOR REX 112.4	Final Apch Crs 313°	Minimum Alt D5.0 1500' (1361')	MDA(H) 580' (441')	Apt Elev 139'	
MISSED APCH: Climb outbound on REX VOR R-313 until D7.0, make teardrop turn to the LEFT within 10 NM and return to REX VOR at the minimum holding altitude.					No MSA published 3000' MSA REX VOR
Alt Set: MB (IN on req) Apt Elev: 5 MB Trans level: FL 195 Trans alt: 18500'					



Gnd speed-Kts	70	90	100	120	140	160	SALS PAPI	↑ on 112.4 R-313 D7.0
Descent Angle 3.00°	372	478	531	637	743	849		
MAP at VOR								

STRAIGHT-IN LANDING RWY 31			CIRCLE-TO-LAND	
MDA(H) 580' (441')			MDA(H)	
	ALS out		Max Kts	
A			90	660' (521') -1
B			120	
C	1¼		140	660' (521') -1½
D	1½		165	700' (561') -2

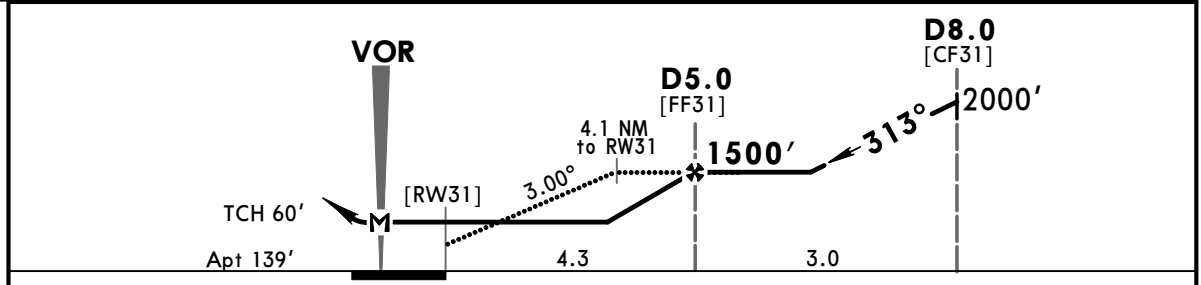
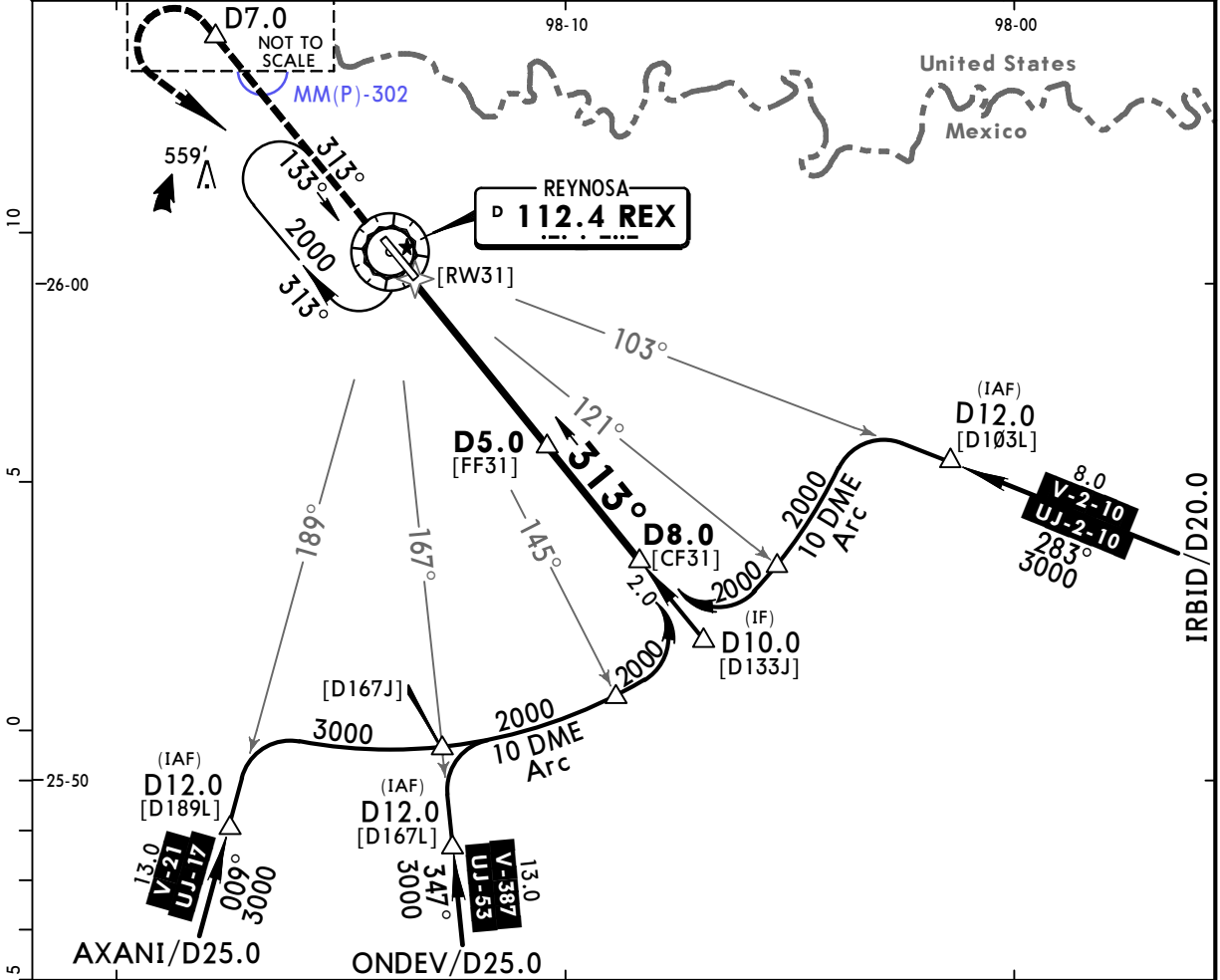
CHANGES: Database identifier.

MMRX/REX
GEN LUCIO BLANCO INTL

JEPPESEN
 29 DEC 17 **(13-5)** Eff 4 Jan

REYNOSA, MEXICO
VOR DME 2 Rwy 31

*REYNOSA Approach 127.2				*REYNOSA Tower 118.8	
VOR REX 112.4	Final Apch Crs 313°	Minimum Alt D5.0 1500' (1361')	MDA(H) 580' (441')	Apt Elev 139'	
MISSED APCH: Climb outbound on REX VOR R-313 until D7.0, make teardrop turn to the LEFT within 10 NM and return to REX VOR at the minimum holding altitude.					<p>No MSA published 3000'</p>
Alt Set: MB (IN on req) Apt Elev: 5 MB Trans level: FL 195 Trans alt: 18500'					



Gnd speed-Kts	70	90	100	120	140	160	SALS	↑ on 112.4 R-313	REX D7.0
Descent Angle 3.00°	372	478	531	637	743	849			
MAP at VOR							PAPI		

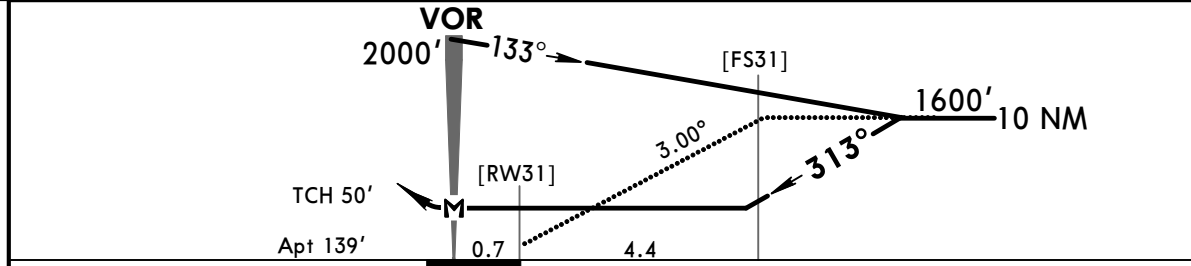
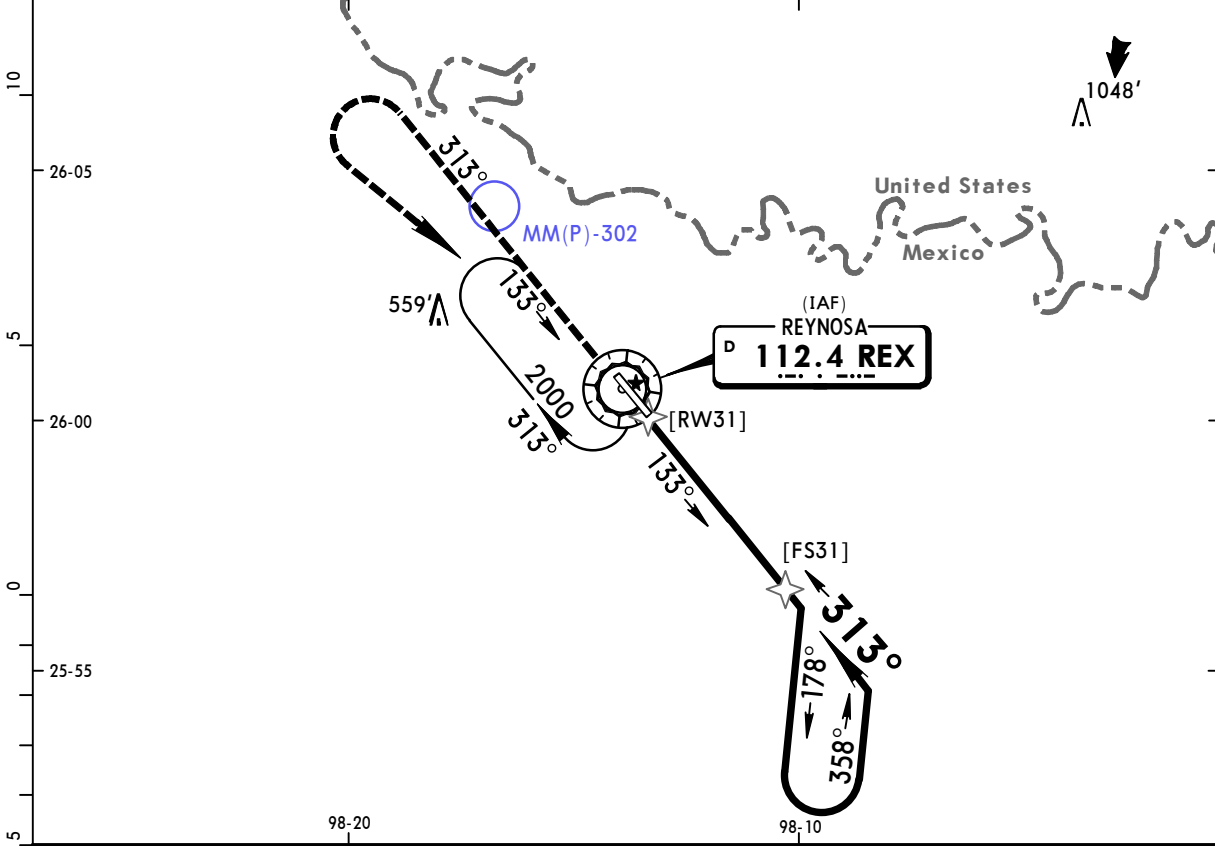
STRAIGHT-IN LANDING RWY 31			CIRCLE-TO-LAND		
MDA(H) 580' (441')			MDA(H)		
ALS out			Max Kts		
A	1		90	660' (521') - 1	
B			120		
C	1 1/4		140	660' (521') - 1 1/2	
D	1 1/2		165	700' (561') - 2	

MMRX/REX
GEN LUCIO BLANCO INTL

JEPESEN
 29 DEC 17 **(13-6)** Eff 4 Jan

REYNOSA, MEXICO
VOR Rwy 31

*REYNOSA Approach 127.2				*REYNOSA Tower 118.8																										
VOR REX 112.4	Final Apch Crs 313°	No FAF	MDA(H) 720' (581')	Apt Elev 139'																										
MISSED APCH: Climb outbound on REX VOR R-313, turn LEFT within 10 NM and return to REX VOR at the minimum holding altitude.																														
<table border="1"> <tr> <th colspan="8">MAX TIME TO TURN</th> </tr> <tr> <th>Gnd speed-Kts</th> <th>80</th> <th>100</th> <th>120</th> <th>140</th> <th>160</th> <th>180</th> <th>200</th> </tr> <tr> <td>7 NM to turn</td> <td>5:15</td> <td>4:12</td> <td>3:30</td> <td>3:00</td> <td>2:38</td> <td>2:20</td> <td>2:06</td> </tr> </table>							MAX TIME TO TURN								Gnd speed-Kts	80	100	120	140	160	180	200	7 NM to turn	5:15	4:12	3:30	3:00	2:38	2:20	2:06
MAX TIME TO TURN																														
Gnd speed-Kts	80	100	120	140	160	180	200																							
7 NM to turn	5:15	4:12	3:30	3:00	2:38	2:20	2:06																							
Alt Set: MB (IN on req)		Apt Elev: 5 MB		Trans level: FL 195		Trans alt: 18500'																								



Gnd speed-Kts	70	90	100	120	140	160	SSALS PAPI	REX on 112.4 R-313
Descent Angle 3.00°	372	478	531	637	743	849		
MAP at VOR								

STRAIGHT-IN LANDING RWY 31			CIRCLE-TO-LAND		
MDA(H) 720' (581')			MDA(H) _____		
	ALS out		Max Kts		
A			90	720' (581') - 1	
B	1		120	720' (581') - 1½	
C	1½		140	720' (581') - 2	
D	1¾		165	720' (581') - 2	

CHANGES: None.