

General Information

Location: CUERNAVACA MEX
ICAO/IATA: MMCB / CVJ
Lat/Long: N18° 50.1', W099° 15.7'
Elevation: 4295 ft

Airport Use: Public
Daylight Savings: Not Observed
UTC Conversion: +6:00 = UTC
Magnetic Variation: 4.0° E

Fuel Types: 100-130 Octane, Jet A
Customs: No
Airport Type: IFR
Landing Fee: No
Control Tower: Yes
Jet Start Unit: No
LLWS Alert: No
Beacon: Yes

Sunrise: 1234 Z
Sunset: 0008 Z

Runway Information

Runway: 03
Length x Width: 9180 ft x 148 ft
Surface Type: asphalt
TDZ-Elev: 4203 ft
Lighting: Edge, ALS
Displaced Threshold: 1312 ft

Runway: 21
Length x Width: 9180 ft x 148 ft
Surface Type: asphalt
TDZ-Elev: 4295 ft
Lighting: Edge, ALS

Communication Information

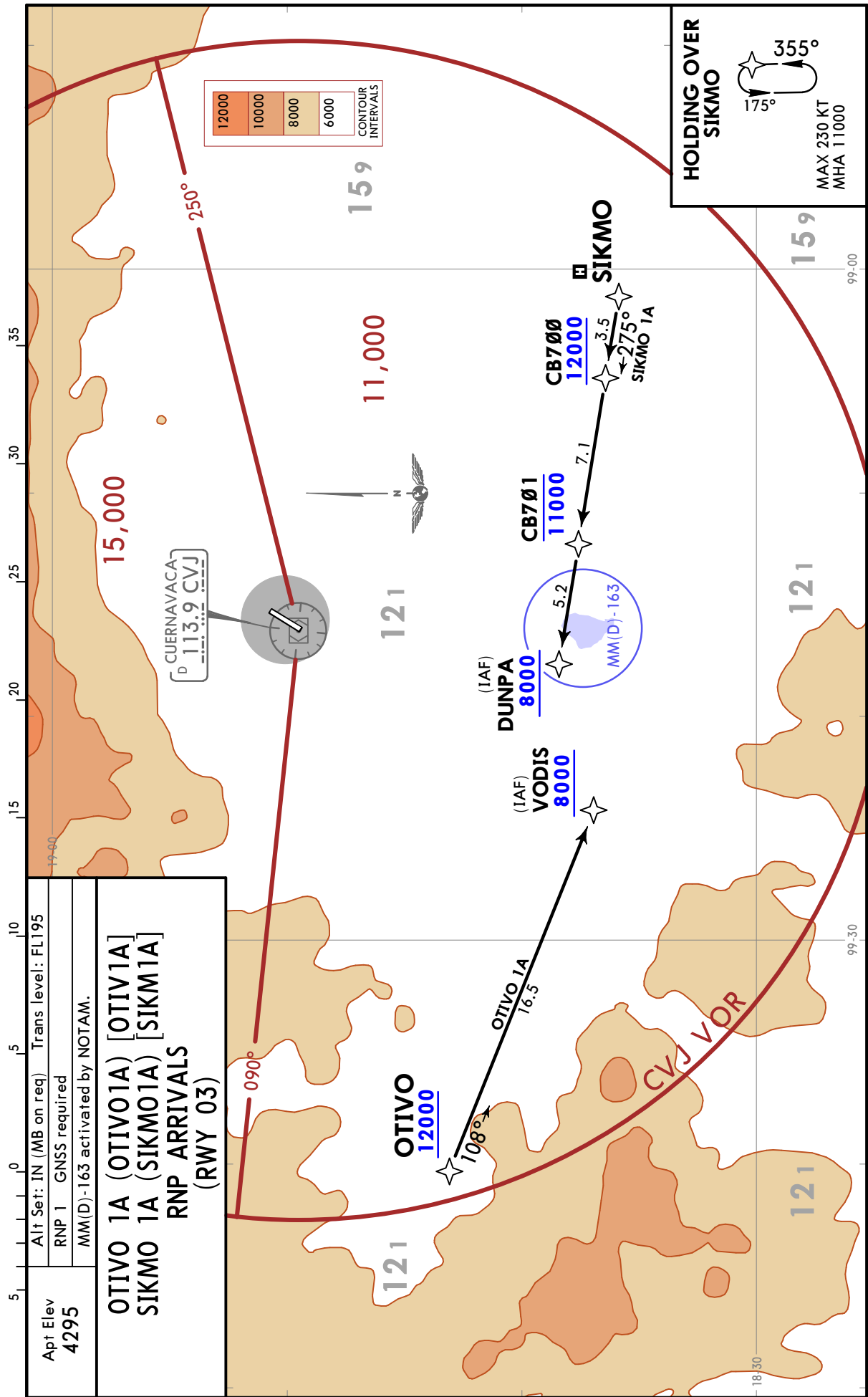
Cuernavaca Tower: 118.350
Mexico Radar: 119.250

MMCB/CVJ
 GEN MARIANO MATAMOROS

JEPPESEN
 10-2 3 SEP 21
 Eff 9 Sep

CUERNAVACA, MEXICO

RNAV STAR

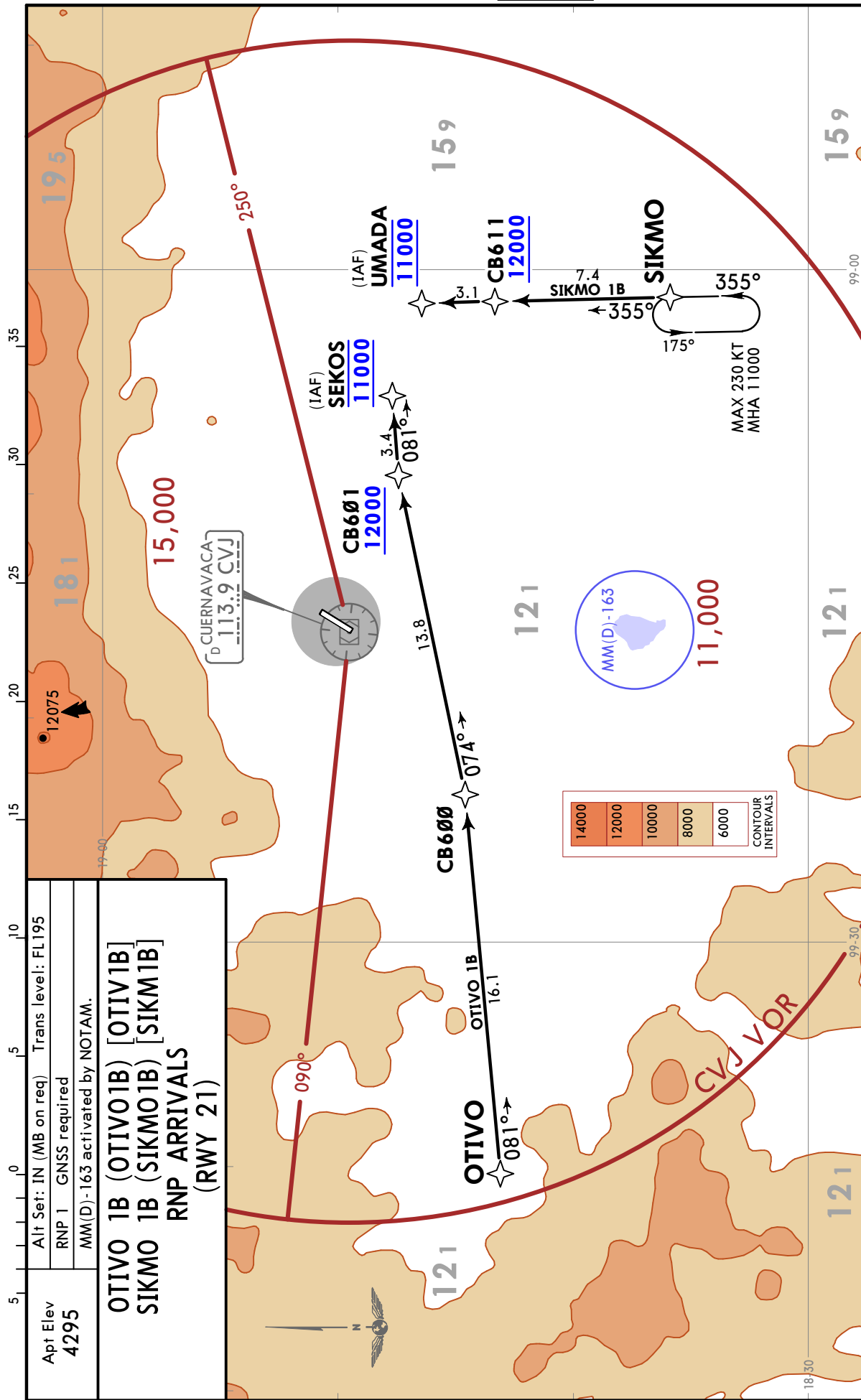


MMCB/CVJ
GEN MARIANO MATAMOROS

JEPPESSEN
10-2A

3 SEP 21
Eff 9 Sep

CUERNAVACA, MEXICO
RNAV STAR



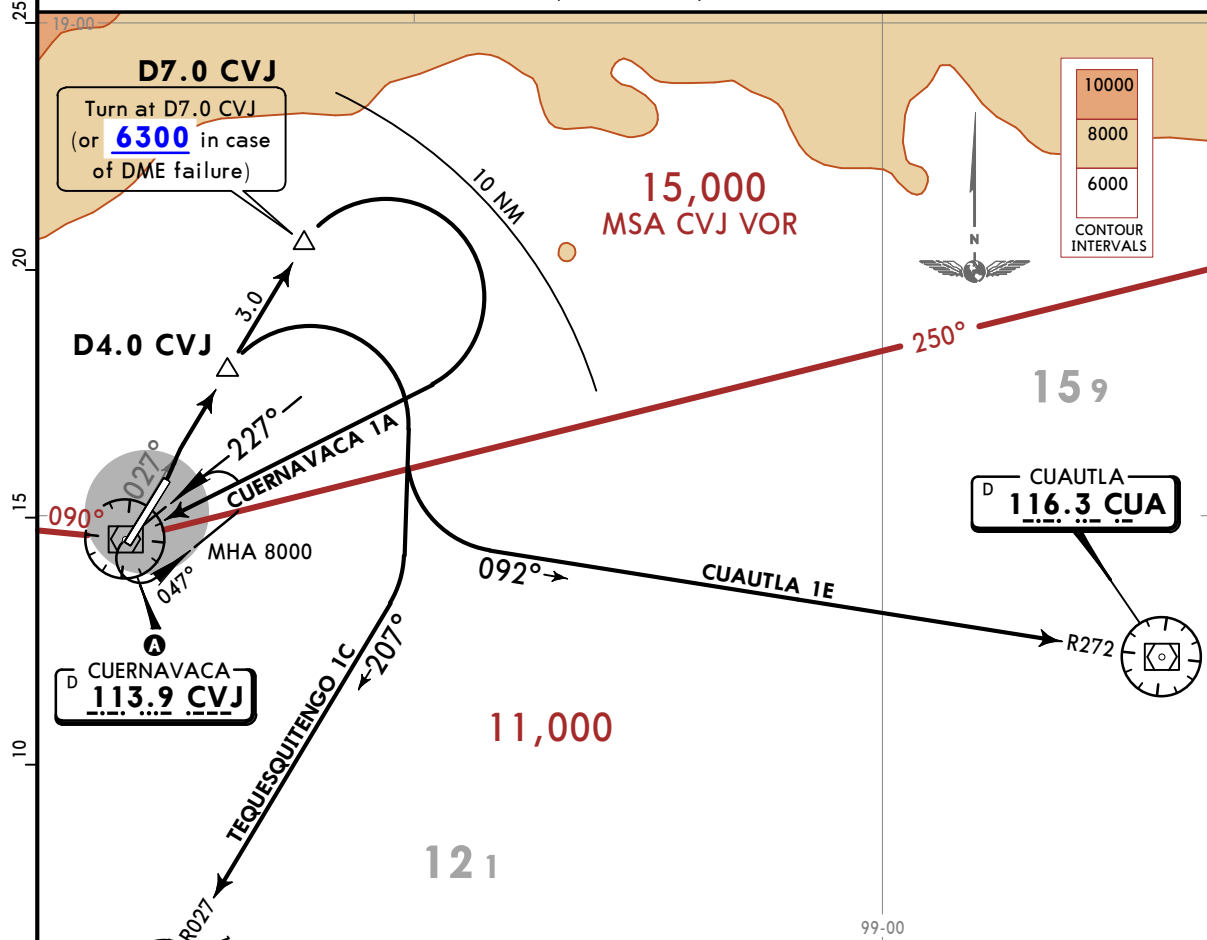
MMCB/CVJ
GEN MARIANO MATAMOROS

JEPPESEN
 3 SEP 21
10-3 Eff 9 Sep

CUERNAVACA, MEXICO
SID

Apt Elev 4295 Trans alt: 18500
 1. Do not use holding patterns at the same altitude.
 2. MM(D)-163 activated by NOTAM.

CUAUTLA 1E (CUA1E)
CUERNAVACA 1A (CVJ1A)
TEQUESQUITENGO 1C (TEQ1C)
DEPARTURES
(RWY 03)



These SIDs require a minimum climb gradient of 300 per NM to 7000.

Gnd speed-KT	75	100	150	200	250	300
300 per NM	375	500	750	1000	1250	1500

A MINIMUM CROSSING ALTITUDE			
TEQ	V-32		5100
TLC	V-32		10500
B MINIMUM CROSSING ALTITUDE			
MEX	V-15	J-21	11200
APN		UJ-15, J-177	11200
CUA	V-24	UJ-24	7500
IZT		UL-423	7500
OAX	V-16, V-27	J-13	7500
PXM		UJ-71	7500
ACA	V-15	J-21	7900
ZIH	V-24	J-177	8600
UPN		UJ-24	8800
MLM	V-16		8800
TLC	V-27	J-13	12000

SID	INITIAL CLIMB
CUAUTLA 1E	Climb on CVJ R027 to D4.0 CVJ, turn RIGHT to intercept CUA R272 and continue on assigned route or ATC instructions.
CUERNAVACA 1A	Climb on CVJ R027 to D7.0 CVJ (or 6300 in case of DME failure), turn RIGHT within 10 NM to CVJ VOR. Depart CVJ VOR at the MCA A of the assigned route or ATC instructions.
TEQUESQUITENGO 1C	Climb on CVJ R027 to D4.0 CVJ, turn RIGHT to intercept TEQ R027 to TEQ VOR. Depart TEQ VOR at the MCA B of the assigned route or ATC instructions.

CHANGES: MCA table, airway deleted, airspace MM(D)-163.

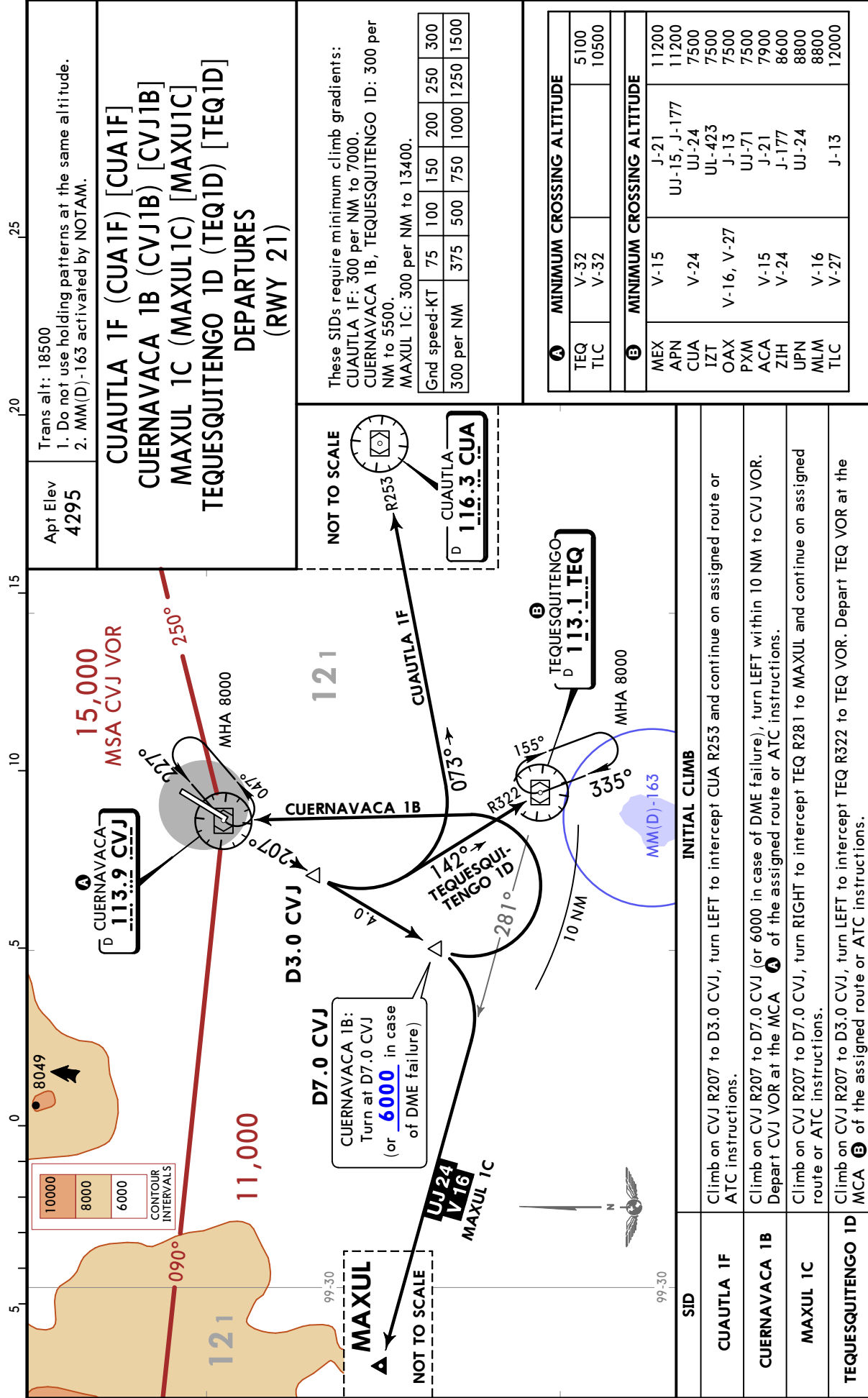
MMCB/CVJ
GEN MARIANO MATAMOROS



3 SEP 21
10-3A Eff 9 Sep

CUERNAVACA, MEXICO

SID



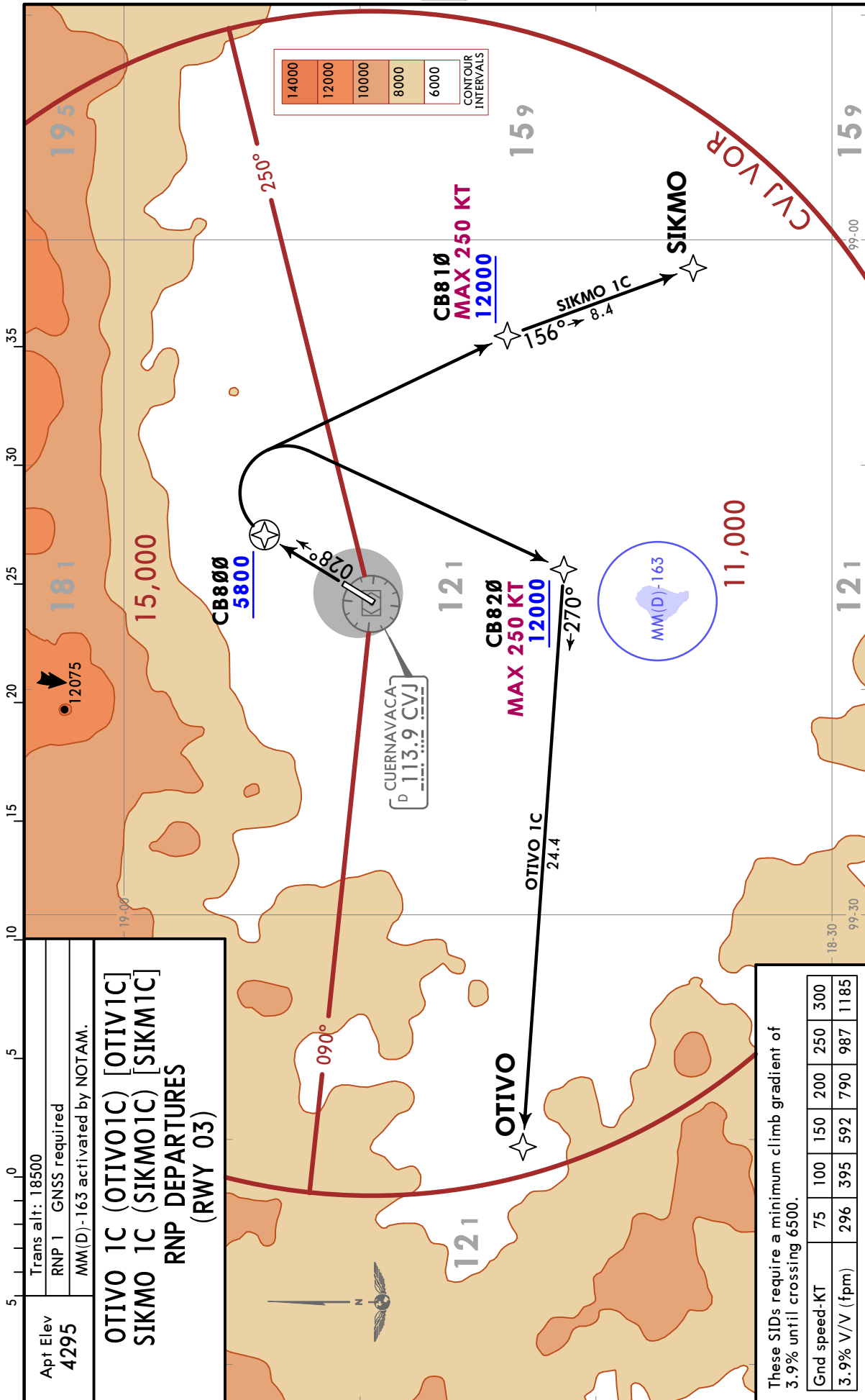
CHANGES: MCA table, airspace MM(D)-163.

MMCB/CVJ
GEN MARIANO MATAMOROS

JEPPESEN
10-3B

27 SEP 24
Eff 3 Oct

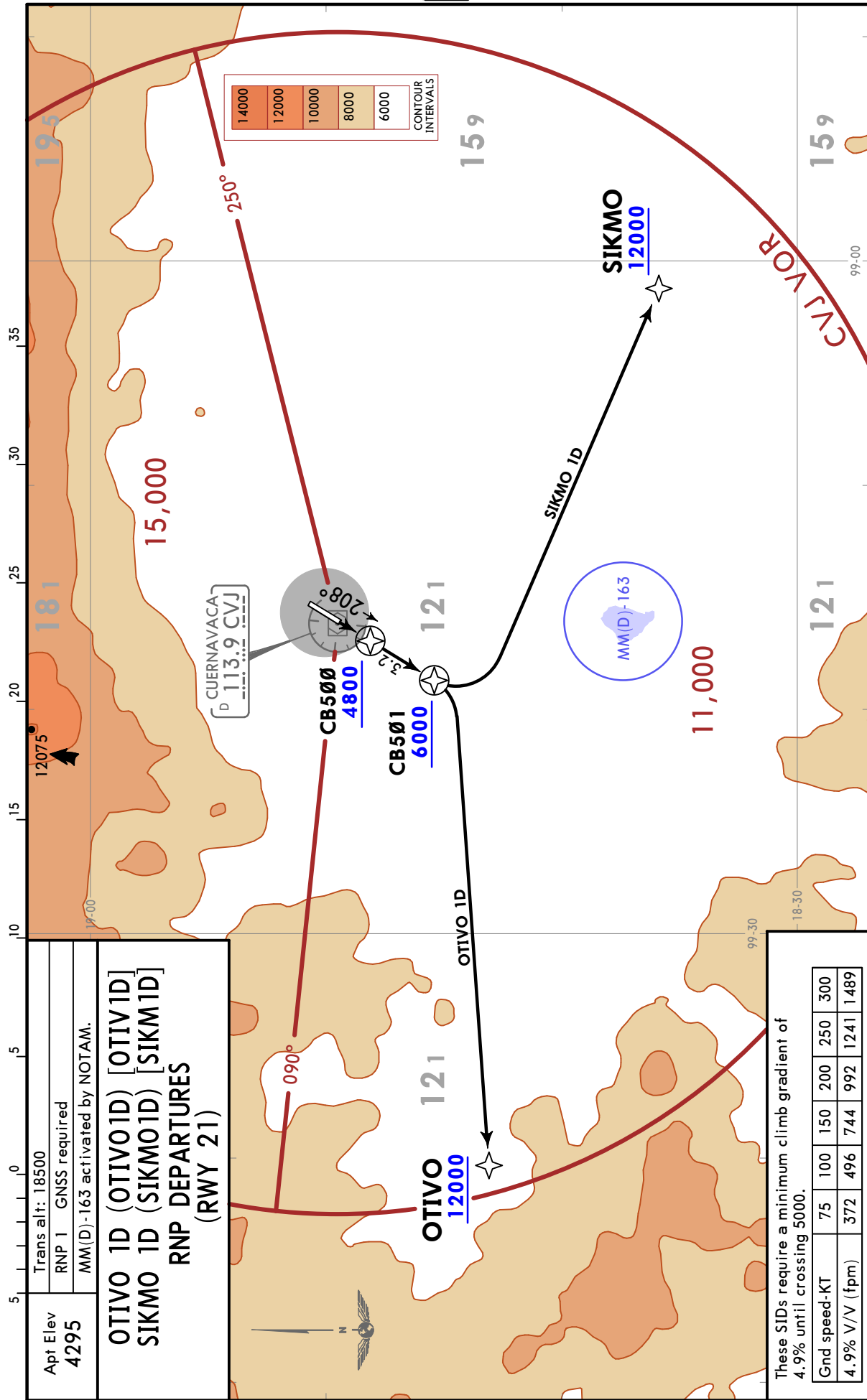
CUERNAVACA, MEXICO
RNAV SID



MMCB/CVJ
GEN MARIANO MATAMOROS

JEPPESSEN 27 SEP 24
10-3C Eff 3 Oct

CUERNAVACA, MEXICO
RNAV SID

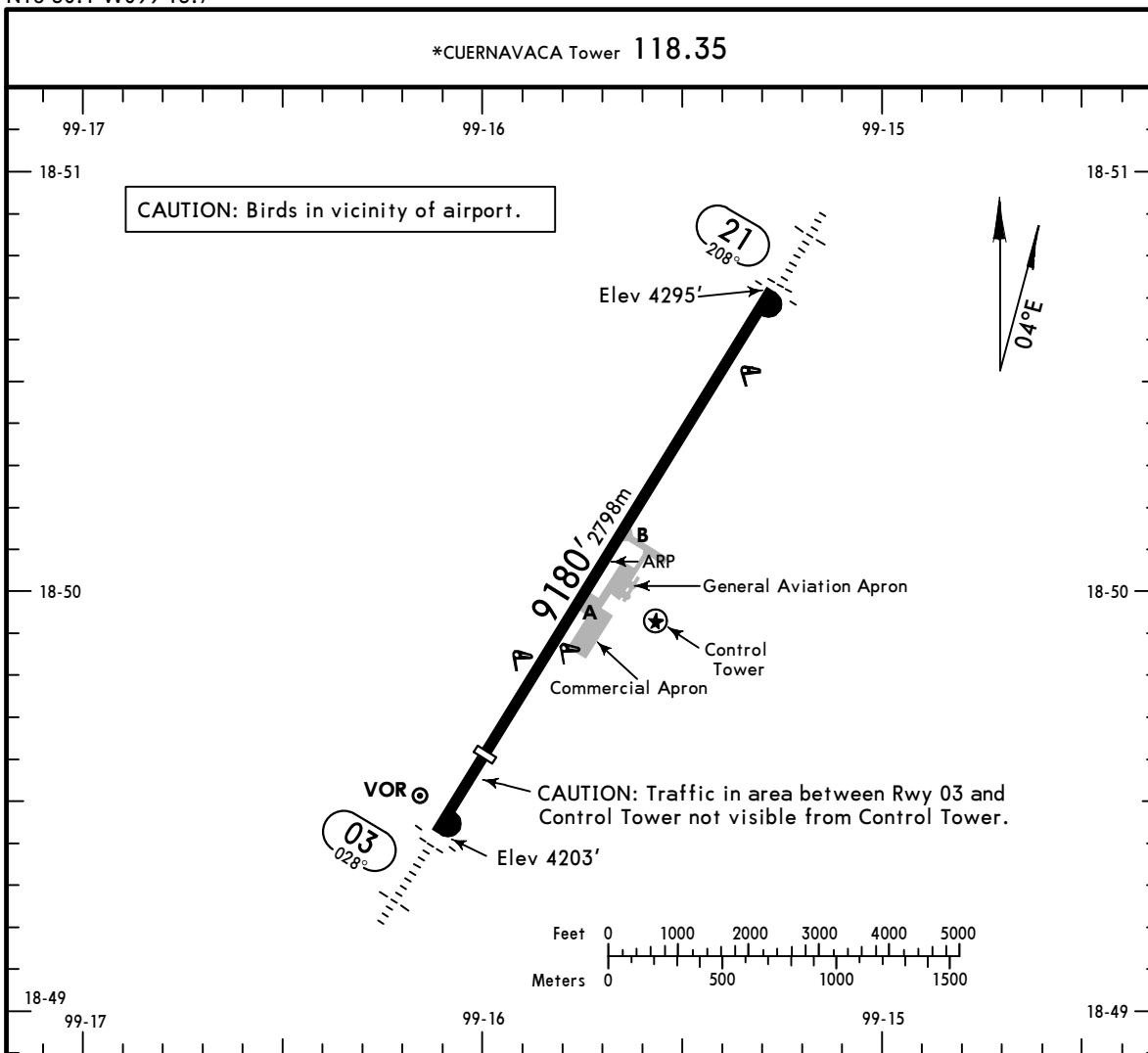


CHANGES: Initial climb text withdrawn, climb gradient.

MMCB/CVJ
 Apt Elev **4295'**
 N18 50.1 W099 15.7

JEPPESEN
 27 SEP 24 (10-9) Eff 3 Oct

CUERNAVACA, MEXICO
 GEN MARIANO MATAMOROS INTL



RWY		ADDITIONAL RUNWAY INFORMATION			
		USABLE LENGTHS		TAKE-OFF	WIDTH
		Threshold	Landing Beyond		
03	21	HIRL SALS PAPI-L (angle 3.2°)	① 7867' 2398m		148' 45m

① Displaced threshold 1312'(400m). IFR only due to mountains in vicinity of approach.

State		TAKE-OFF				
① HIRL & CL (spacing 15m or less) & relevant RVR	RL & CL & relevant RVR	RL & CL	② RL & RCLM	② RL or RCLM	Adequate Vis Ref	
					DAY	NIGHT
TDZ/Mid/Rollout R4 R125m	TDZ/Mid/Rollout R5 R150m	R6 R/V200m	R10 R/V300m	R12 R/V400m	R16 R/V500m	NA

① TDZ/Mid/Rollout R3 or R75m with approved lateral guidance system.
 ② For NIGHT operations, at least RL or CL and RENL are required.

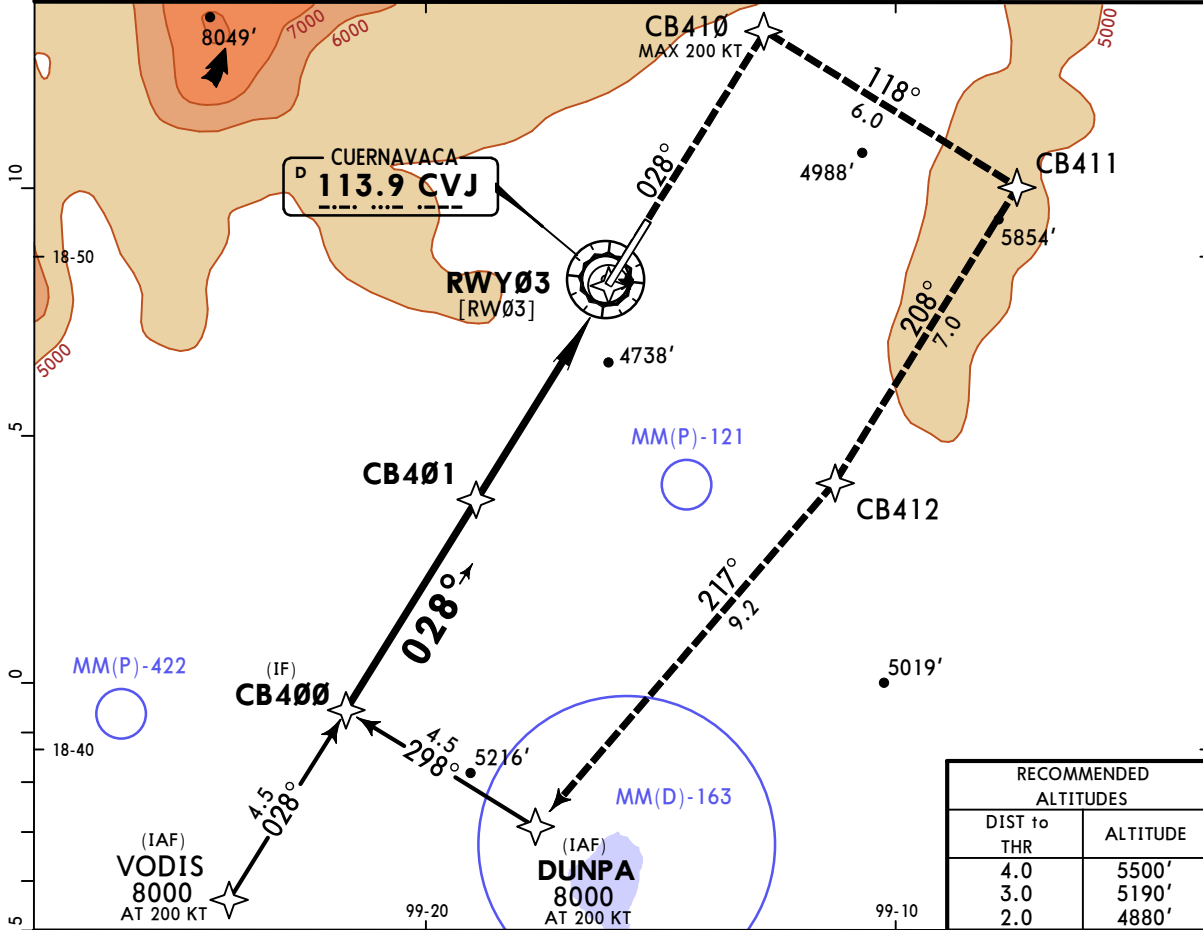
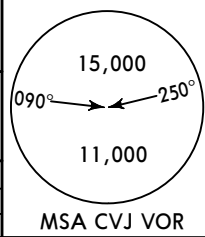
The TDZ RVR/VIS may be assessed by the pilot.
 Adequate visual reference means that a pilot is able to continuously identify the take-off surface and maintain directional control.
 Take-off minimums which are relevant to the take-off manoeuvre itself, should not be confused with weather minimums required for flight initiation. Departure weather minimums at an aerodrome should not be less than the applicable minimums for landing at that aerodrome unless a suitable take-off alternate aerodrome is available. The take-off alternate aerodrome should have weather conditions and facilities suitable for landing the aeroplane in normal and non-normal configurations pertinent to the operation.

MMCB/CVJ
GEN MARIANO MATAMOROS INTL

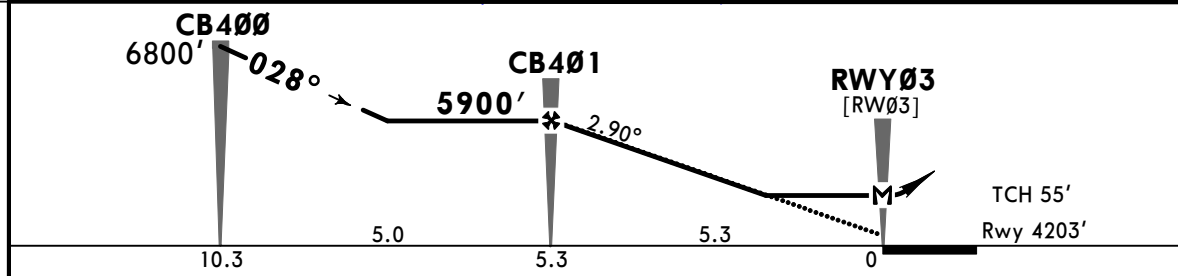
JEPPESEN
 25 DEC 20
12-1 Eff 31 Dec

CUERNAVACA, MEXICO
RNP Rwy 03

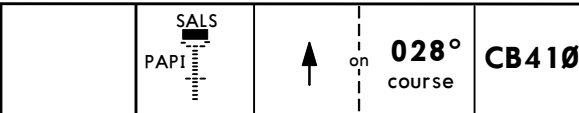
*MEXICO Approach (R) 119.25			*CUERNAVACA Tower 118.35		
RNAV	Final Apch Crs 028°	CB401 5900' (1697')	MDA(H) 4860' (657')	Apt Elev 4295'	Rwy 4203'
MISSED APCH: Climb on course 028° to CB410 and proceed on missed approach track to DUNPA and continue according ATC instructions.					
Alt Set: MB (IN on req) Rwy Elev: 145 MB Trans level: FL 195 Trans alt: 18500'					
RNP Apch					
GNSS required.					



RECOMMENDED ALTITUDES	
DIST to THR	ALTITUDE
4.0	5500'
3.0	5190'
2.0	4880'



Gnd speed-Kts	70	90	100	120	140	160
Descent Angle 2.90°	359	462	513	616	718	821
MAP at RW03						
CB401 to RW03	5.3	4:33	3:32	3:11	2:39	2:16



STRAIGHT-IN LANDING RWY 03	
LNAV	
MDA(H) 4860' (657')	
ALS out	
A	1
B	1
C	1 1/8
D	1 1/8

CIRCLE-TO-LAND	
Max Kts	MDA(H)
90	5040' (745') -1
120	5500' (1205') -3
140	5500' (1205') -3
D	NA

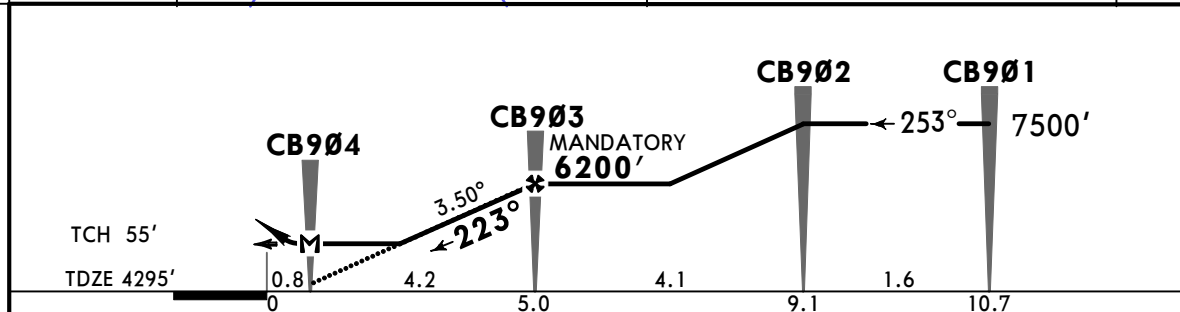
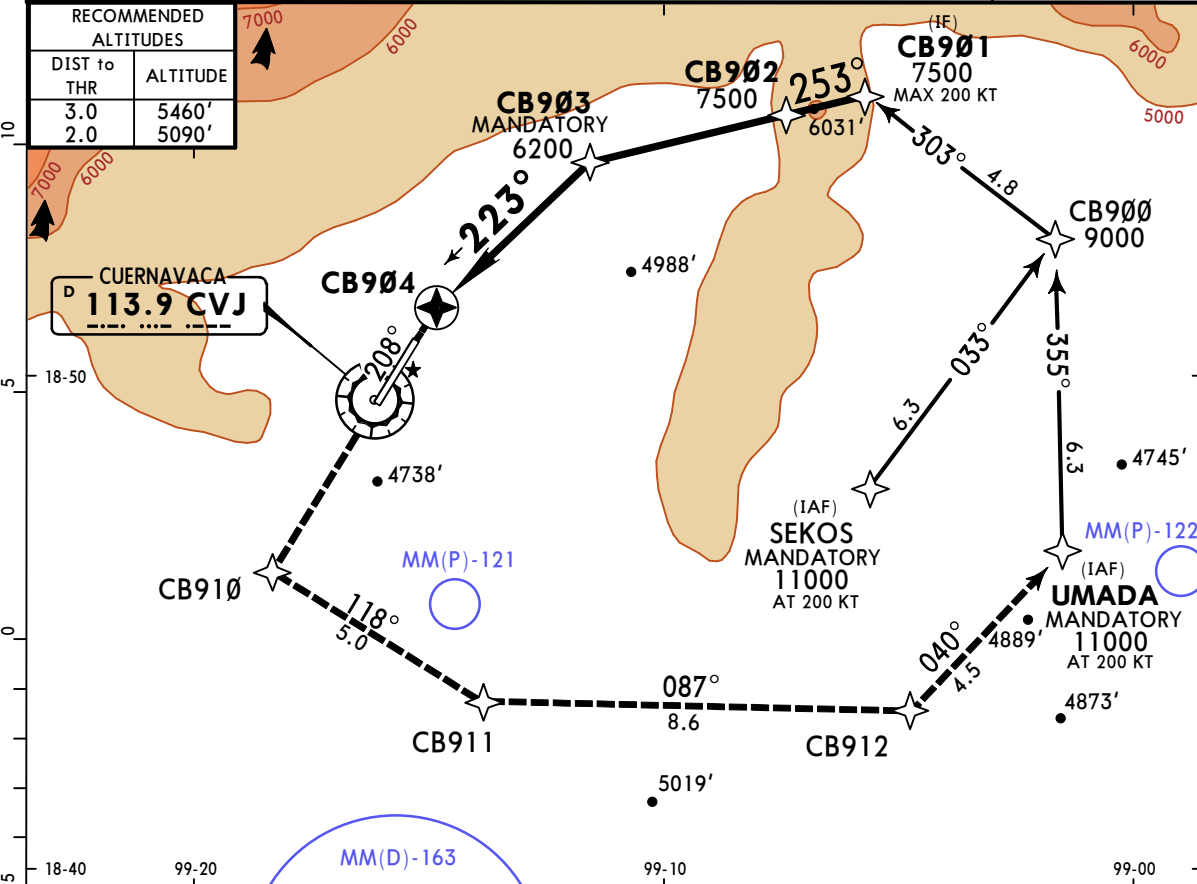
CHANGES: Rwy ident, lighting.

MMCB/CVJ
GEN MARIANO MATAMOROS INTL

JEPPESEN
 25 DEC 20
12-2 Eff 31 Dec

CUERNAVACA, MEXICO
RNP Rwy 21

*MEXICO Approach (R) 119.25			*CUERNAVACA Tower 118.35		
RNAV	Final Apch Crs 223°	CB903 MANDATORY 6200' (1905')	MDA(H) 5040' (745')	Apt Elev 4295' Rwy 4295'	
MISSED APCH: Climb on course 208° to CB910 and proceed on missed approach track to UMADA.					
Alt Set: MB (IN on req)		Rwy Elev: 148 MB	Trans level: FL 195	Trans alt: 18500'	
RNP Apch GNSS required.					



Gnd speed-Kts	70	90	100	120	140	160		on 208° course CB910
Descent Angle 3.50°	434	557	619	743	867	991		
MAP at CB904								
CB903 to MAP	4.2	3:36	2:48	2:31	2:06	1:48	1:35	

STRAIGHT-IN LANDING RWY 21			CIRCLE-TO-LAND		
LNAV			ALS out		
MDA(H) 5040' (745')			Max Kts		
A	1	90	5040' (745') -1		
B	1 1/4	120	5500' (1205') -3		
C	2	140	NA		
D		D			

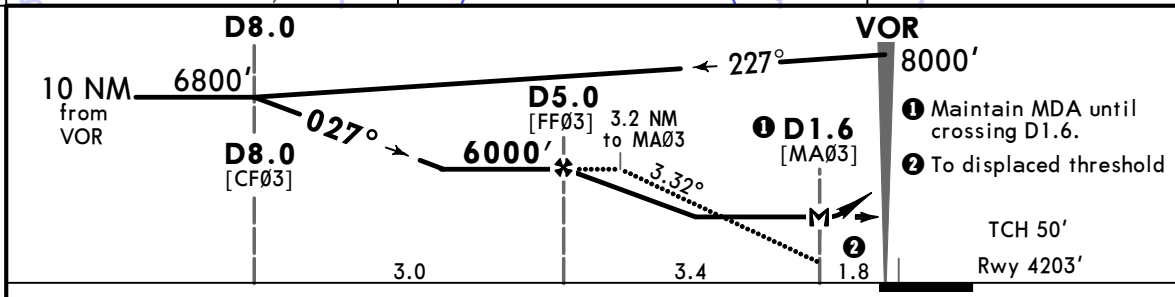
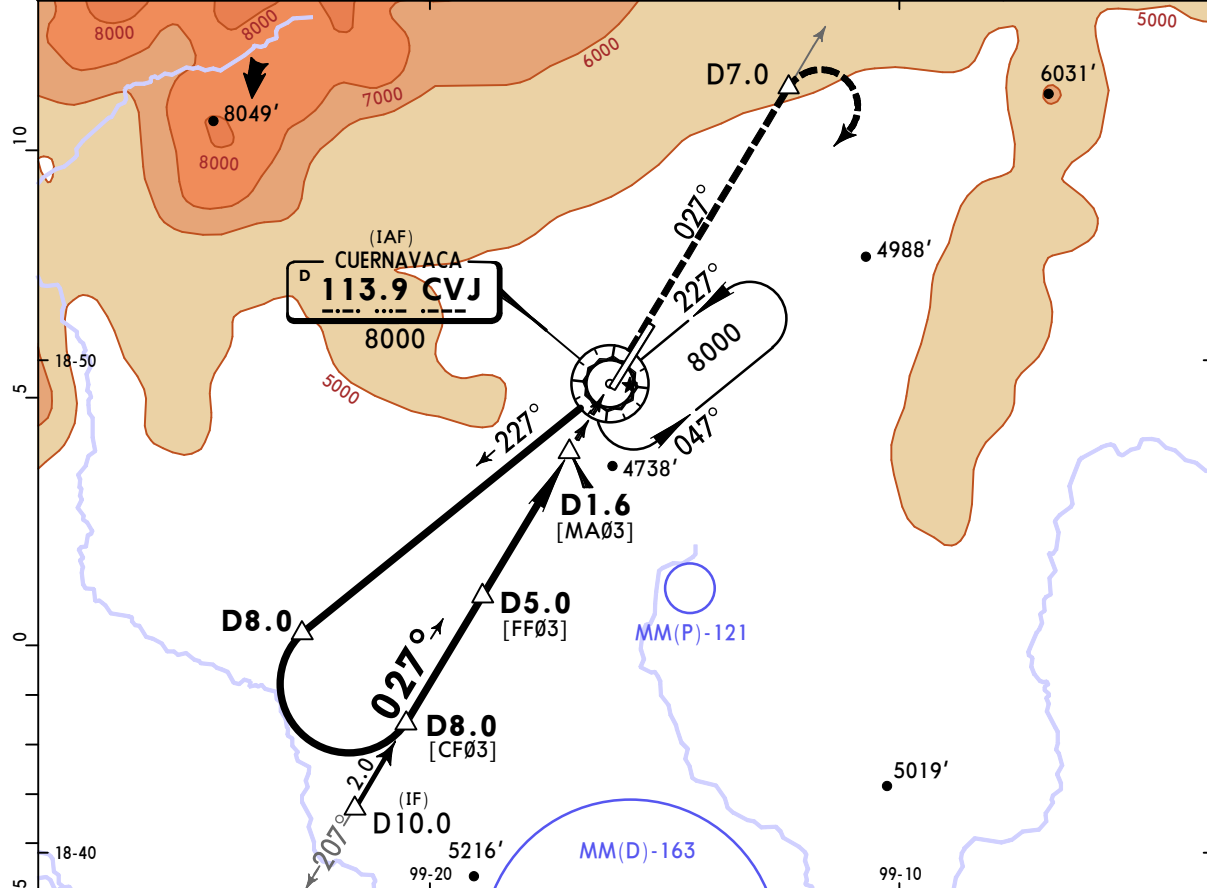
CHANGES: Rwy ident, lighting.

MMCB/CVJ
GEN MARIANO MATAMOROS INTL

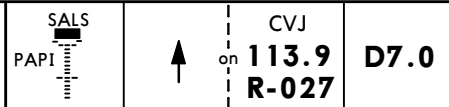
JEPPESEN
13-1 27 SEP 24
Eff 3 Oct

CUERNAVACA, MEXICO
VOR Rwy 03

*MEXICO Approach (R)				*CUERNAVACA Tower		
119.25				118.35		
VOR CVJ 113.9	Final Apch Crs 027°	D5.0 6000' (1797')	MDA(H) 4920' (717')	Apt Elev 4295' Rwy 4203'		
MISSED APCH: Climb outbound on CVJ VOR R-027 to D7.0, then turn RIGHT within 10 NM to CVJ VOR and hold at the minimum holding altitude.						
Alt Set: IN (MB on req)		Trans level: FL 195		Trans alt: 18500'		MSA CVJ VOR
DME required.						



Gnd speed-Kts	70	90	100	120	140	160
Descent Angle 3.32°	411	529	587	705	822	940
MAP at D1.6						



STRAIGHT-IN LANDING RWY 03			CIRCLE-TO-LAND		
MDA(H) 4920' (717')			MDA(H)		
ALS out			Max Kts		
A			90	5100' (805') -2	
B	2		120	5500' (1205') -3	
C			140	5580' (1285') -3	
D	2 1/4		165	5580' (1285') -3	