

General Information

Location: MONTERREY MEX
ICAO/IATA: MMMY / MTY
Lat/Long: N25° 46.7', W100° 06.4'
Elevation: 1276 ft

Airport Use: Public
Daylight Savings: Not Observed
UTC Conversion: +6:00 = UTC
Magnetic Variation: 5.0° E
Sectional Chart: Brownsville

Fuel Types: 100-130 Octane, Jet A
Customs: Yes
Airport Type: IFR
Landing Fee: No
Control Tower: Yes
Jet Start Unit: No
LLWS Alert: No
Beacon: Yes

Sunrise: 1312 Z
Sunset: 2349 Z

Runway Information

Runway: 12
Length x Width: 9843 ft x 148 ft
Surface Type: paved
TDZ-Elev: 1276 ft
Lighting: Edge, ALS

Runway: 16
Length x Width: 5906 ft x 98 ft
Surface Type: asphalt
TDZ-Elev: 1270 ft

Runway: 30
Length x Width: 9843 ft x 148 ft
Surface Type: paved
TDZ-Elev: 1247 ft
Lighting: Edge, ALS

Runway: 34
Length x Width: 5906 ft x 98 ft

Surface Type: asphalt
TDZ-Elev: 1257 ft

Communication Information

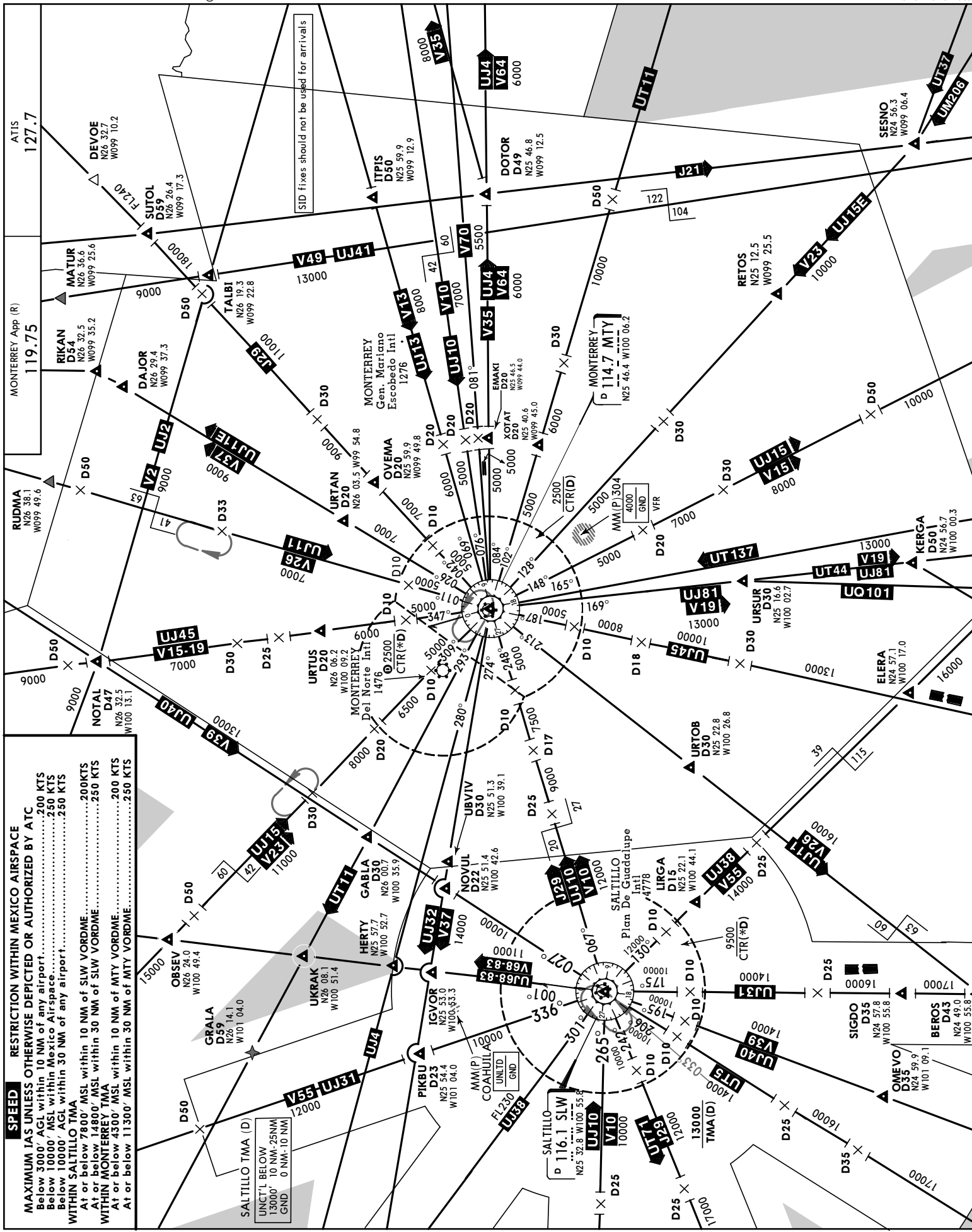
ATIS: 127.700
Monterrey Tower: 118.100
Monterrey Ground: 121.900
Monterrey Approach: 119.750
Monterrey Approach: 120.400
Monterrey Arrival: 120.400
Monterrey Departure: 119.750
Monterrey Information: 122.450 AFIS

TMA

10-1B

24 NOV 23

MONTERREY, MEXICO



SPEED RESTRICTION WITHIN MEXICO AIRSPACE
 MAXIMUM IAS UNLESS OTHERWISE DEPICTED OR AUTHORIZED BY ATC
 Below 3000' AGL within 10 NM of any airport.....200 KTS
 Below 10000' AGL within Mexico Airspace.....250 KTS
 Below 10000' AGL within 30 NM of any airport.....250 KTS
 WITHIN SALTILLO TMA
 At or below 7800' MSL within 10 NM of SLW VORDME.....200KTS
 At or below 14800' MSL within 30 NM of SLW VORDME.....250 KTS
 WITHIN MONTERREY TMA
 At or below 4300' MSL within 10 NM of MTY VORDME.....200 KTS
 At or below 11300' MSL within 30 NM of MTY VORDME.....250 KTS

SALTILLO TMA (D)
 UNCT'L BELOW
 13000' TO NMN-25NM
 GND 0 NM-10 NM

SID fixes should not be used for arrivals

MMMY/MTY



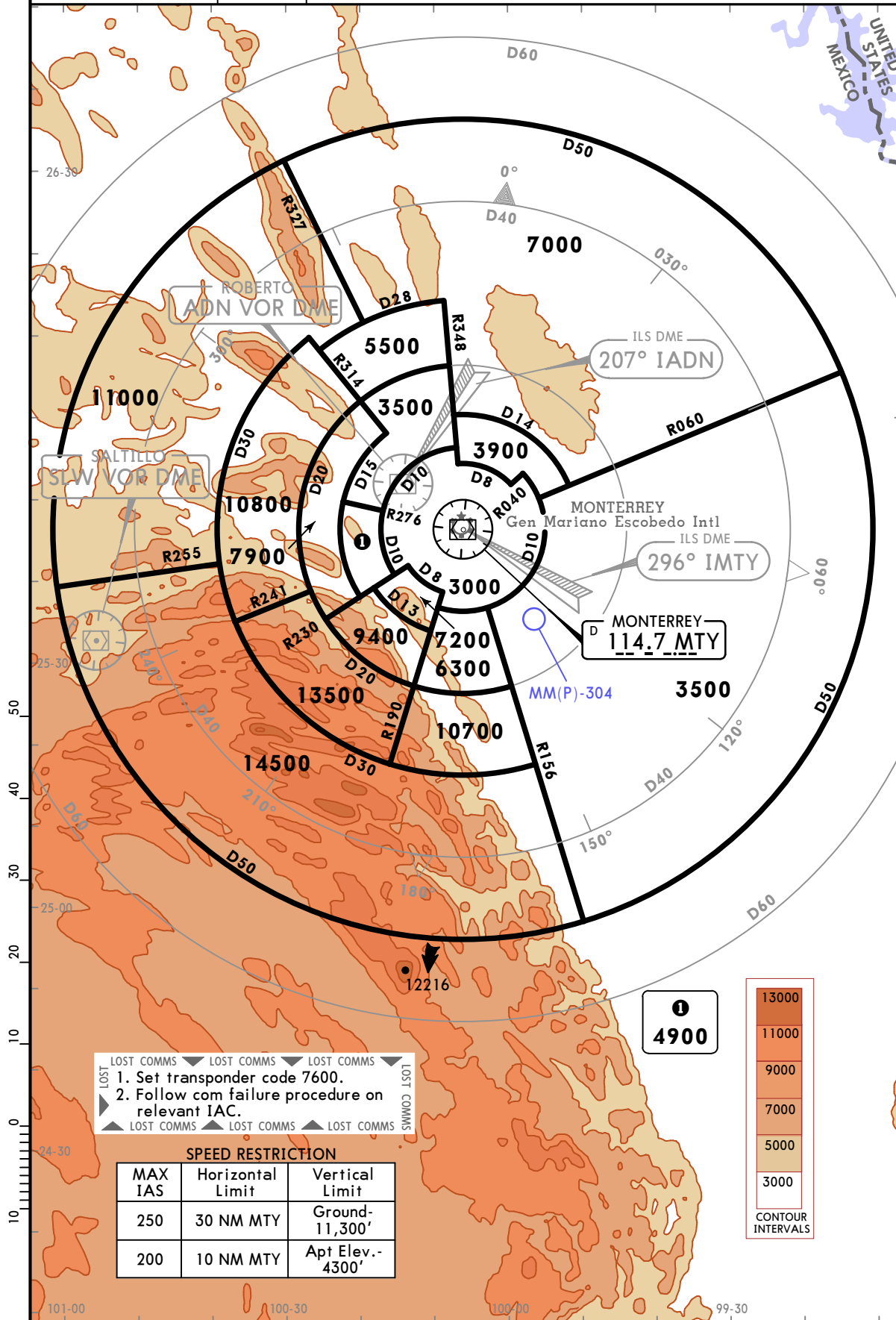
MONTERREY, MEXICO

GEN MARIANO ESCOBEDO INTL (10-1R)

14 JUN 19
Eff 20 Jun

RADAR MINIMUM ALTITUDES

MONTERREY Approach (R) 119.75	Apt Elev 1276	Alt Set: IN (MB on req)	Trans level: FL195	Trans alt: 18500
		1. These MVAs are the lowest altitudes that can be assigned by the controller in a sector when RADAR control procedures (vectors) are applied, without affecting routes and procedures with lower minimums. 2. All aircraft operating under VFR within this TMA should have transponder mode 3 A/C with 4096 code capabilities. 3. Exclusive use chart to verify assigned altitudes to identified aircraft.		



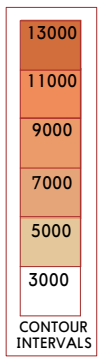
LOST COMMS LOST COMMS LOST COMMS LOST COMMS

LOST
 1. Set transponder code 7600.
 2. Follow com failure procedure on relevant IAC.

LOST COMMS LOST COMMS LOST COMMS LOST COMMS

SPEED RESTRICTION

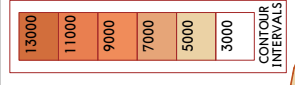
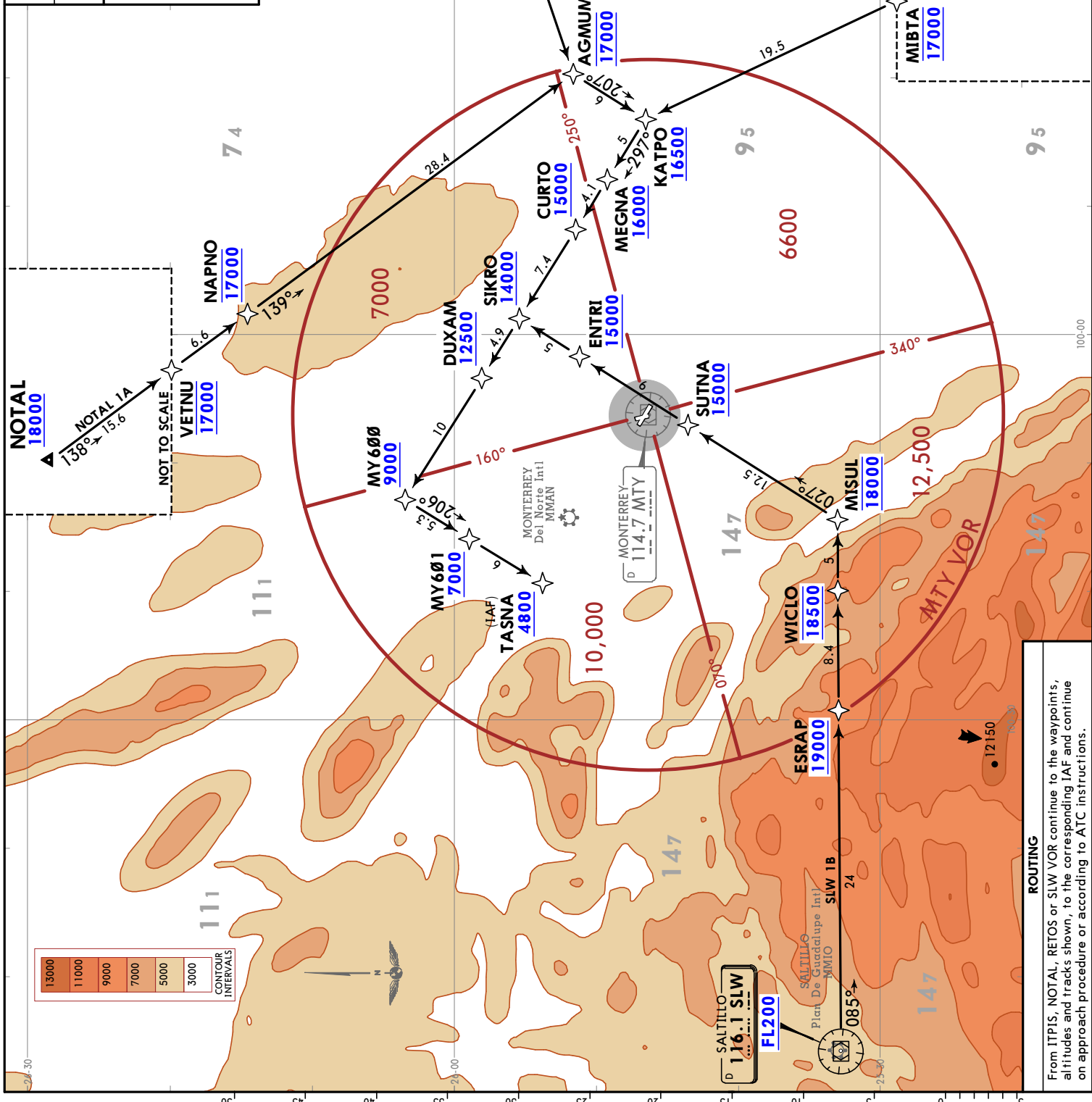
MAX IAS	Horizontal Limit	Vertical Limit
250	30 NM MTY	Ground-11,300'
200	10 NM MTY	Apt Elev.-4300'



ATIS 127.7
 Alt Set: IN (MB on req)
 Trans level: FL195

Apt Elev 1276
 RNAV 1 GNSS required
 RADAR required.

ITPIS 1A (ITPIS1A) [ITPI1A]
 NOTAL 1A (NOTAL1A) [NOTA1A]
 RETOS 1A (RETOS1A) [RETO1A]
 SLW 1B (SLW1B) [SLW1B]
 RNAV ARRIVALS (RWY 12)



ROUTING

From ITPIS, NOTAL, RETOS or SLW VOR continue to the waypoints, altitudes and tracks shown, to the corresponding IAF and continue on approach procedure or according to ATC instructions.

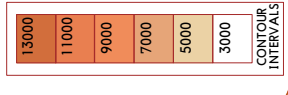
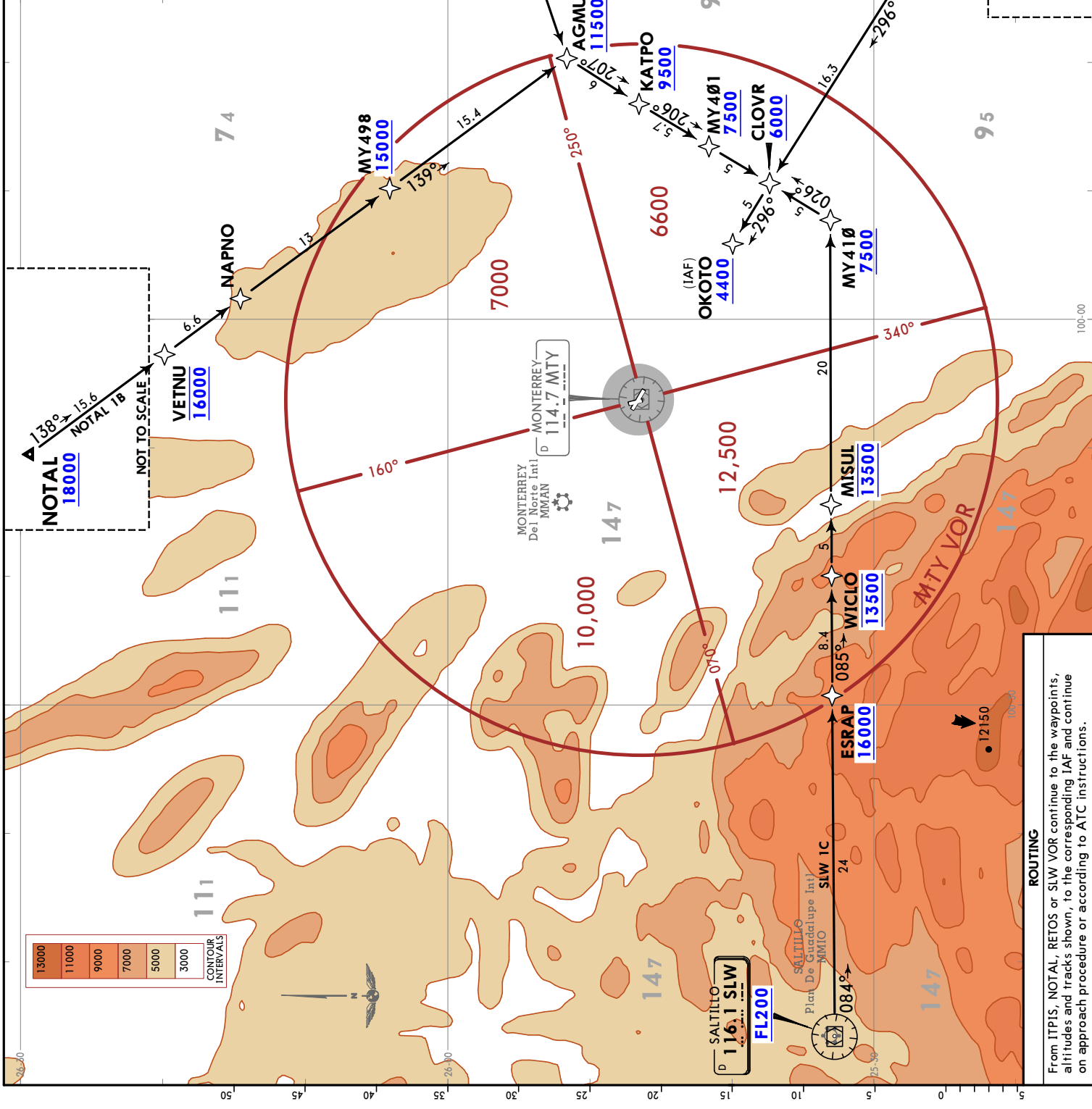
CHANGES: RWY designer.

MONTERREY
MEXICO
RNAV STAR

JEPPesen
16 FEB 24 (10-2A) EFF 22 Feb

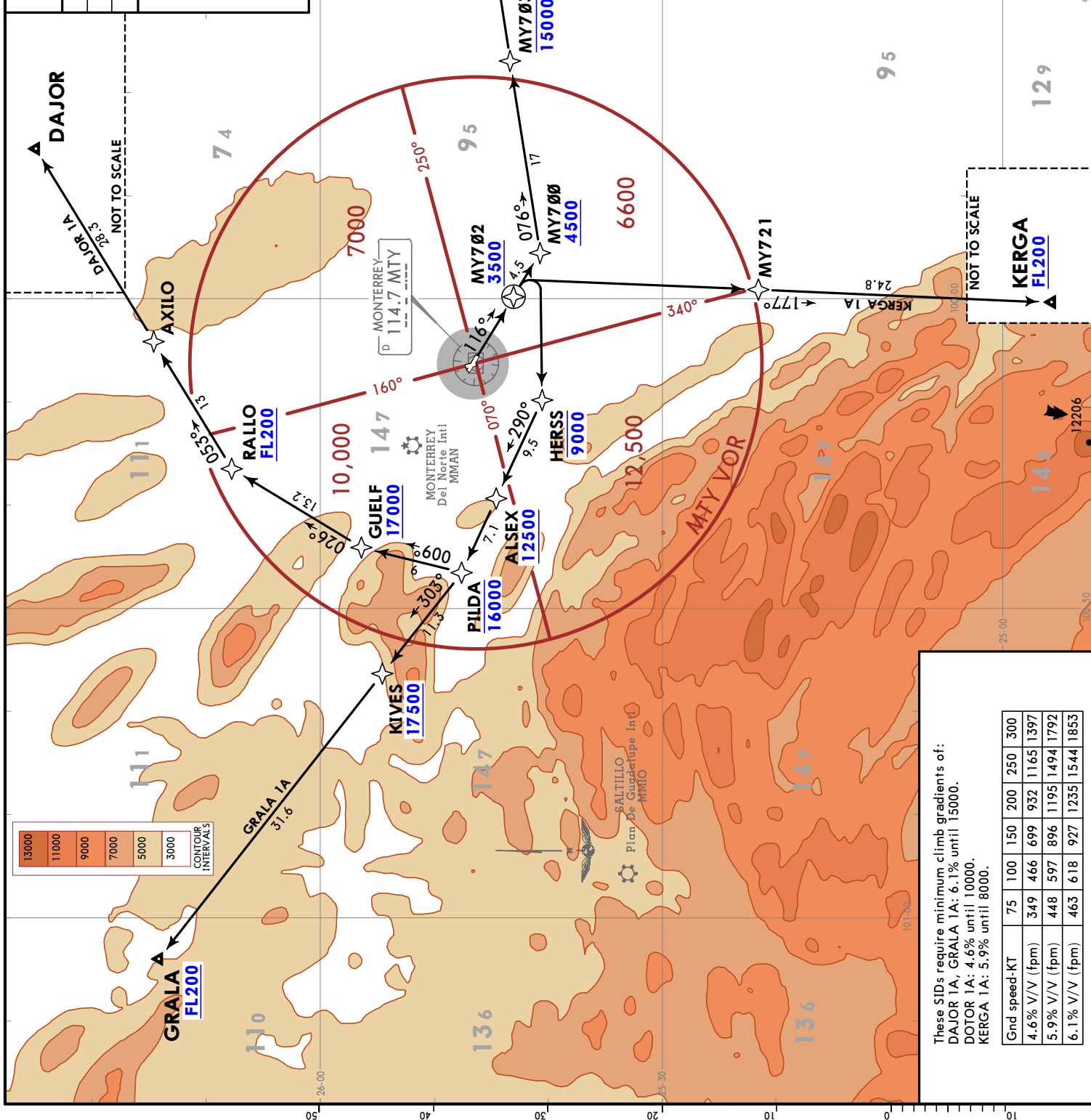
MMMMY/MTY
GEN MARIANO
ESCOBEDO INTL

ATIS 127.7	Alt Set: IN (MB on req) Trans level: FL195
Apt Elev 1276	RNAV 1 GNS required RADAR required.
ITPIS 1B (ITPIS1B) [ITPI1B] NOTAL 1B (NOTAL1B) [NOTA1B] RETOS 1B (RETOS1B) [RETO1B] SLW 1C (SLW1C) [SLW1C] RNAV ARRIVALS (RWY 30)	



ROUTING
From ITPIS, NOTAL, RETOS or SLW VOR continue to the waypoints, altitudes and tracks shown, to the corresponding IAF and continue on approach procedure or according to ATIS instructions.
CHANGES: RWY designator, bearing between SLW VOR and ESRAP.

MONTERREY Departure	119.75	Apt Elev	1276
Trans alt:	18500	RNAV 1 GNSS required	
RADAR required.			
DAJOR 1A (DAJOR1A) [DAJ01A] DOTOR 1A (DOTOR1A) [DOT01A] GRALA 1A (GRALA1A) [GRAL1A] KERGA 1A (KERGA1A) [KERG1A] RNAV DEPARTURES (RWY 12)			



JEPPesen **MONTERREY, MEXICO**
 16 FEB 24 (10-3A) Eff 22 Feb

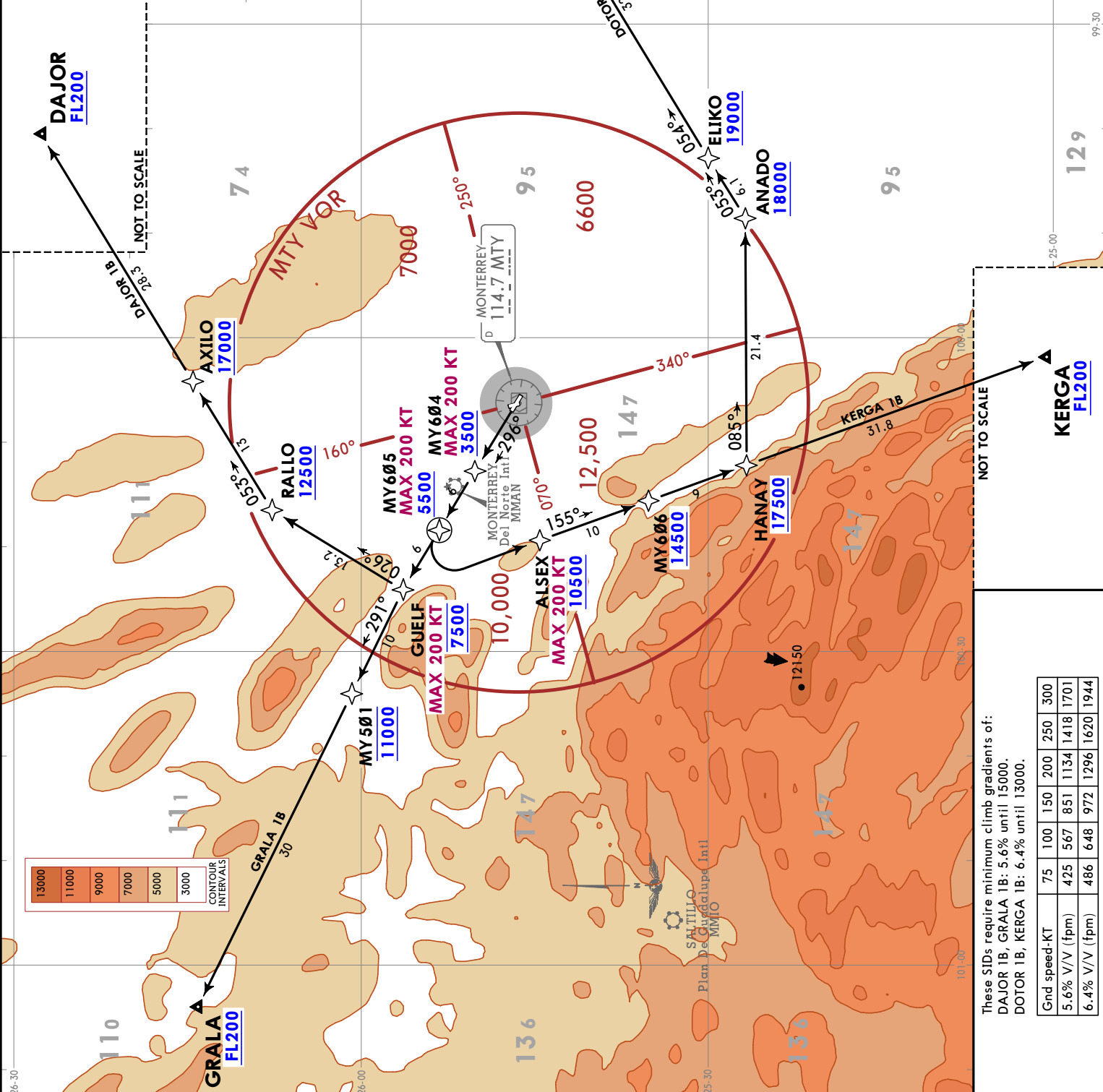
MMMY/MTY
 GEN MARIANO ESCOBEDO INTL

MONTERREY Departure
 119.75
 Apt Elev
 1276

Trans alt: 18500
 RNAV 1 GNSS required
 RADAR required.

RNAV DEPARTURES
 (RWY 30)

DAJOR 1B (DAJOR1B) [DAJ01B]
 DOTOR 1B (DOTOR1B) [DOT01B]
 GRALA 1B (GRALA1B) [GRAL1B]
 KERGA 1B (KERGA1B) [KERG1B]



15000	11000	9000	7000	5000	3000
CONTOUR INTERVALS					

These SIDs require minimum climb gradients of:
 DAJOR 1B, GRALA 1B: 5.6% until 15000.
 DOTOR 1B, KERGA 1B: 6.4% until 13000.

Grnd speed-KT	75	100	150	200	250	300
5.6% V/V (fpm)	425	567	851	1134	1418	1701
6.4% V/V (fpm)	486	648	972	1296	1620	1944

JEYPESEN
16 FEB 24 (10-3B) Eff 22 Feb

MEXICO
Apt Elev
1276

SID

MONTERREY Departure
119.75

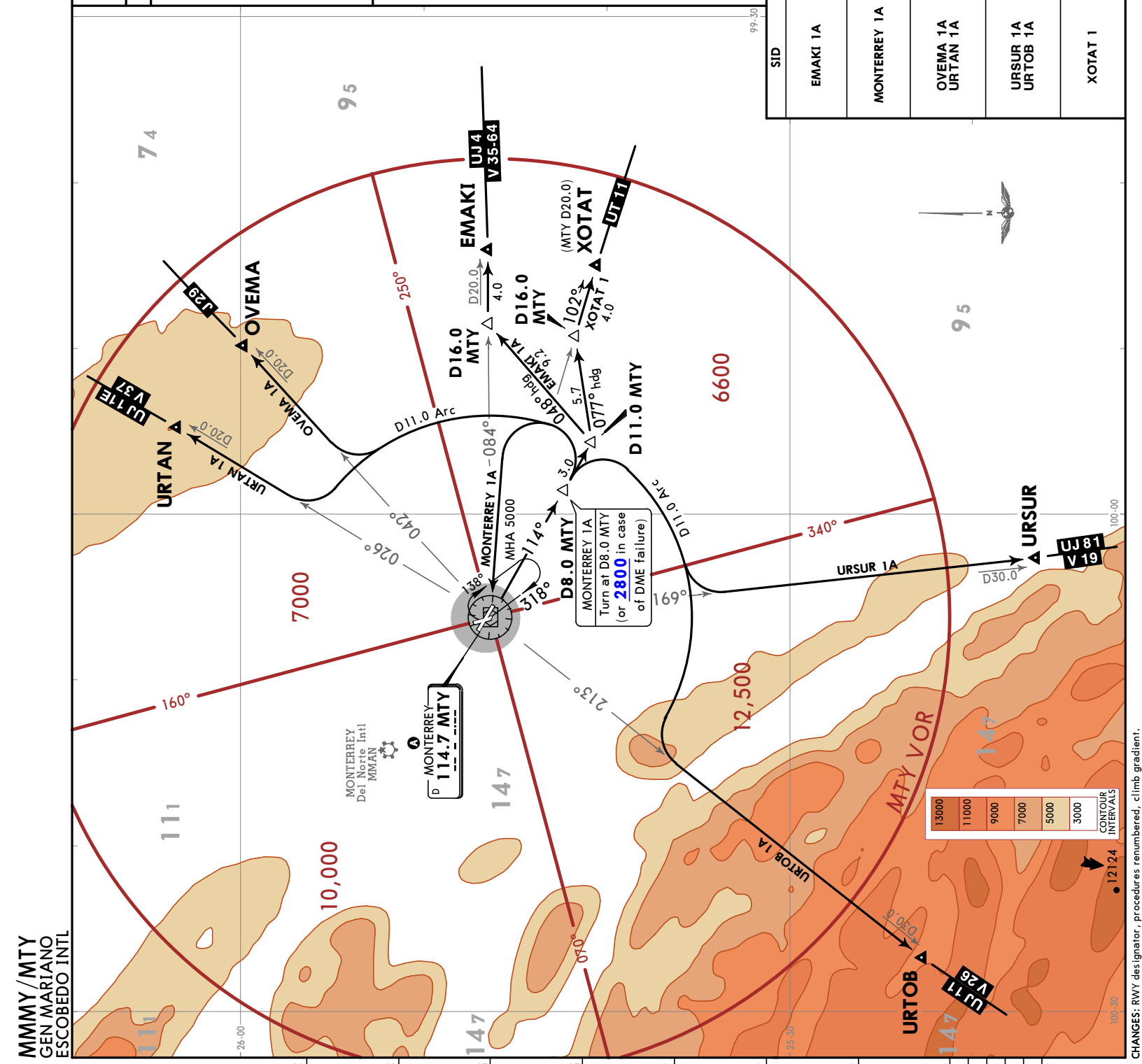
Trans alt: 18500

EMAKI 1A (EMAKI1A) [EMAKI1A]
MONTERREY 1A (MTY1A) [MTY1A]
OVEMA 1A (OVEMA1A) [OVEMA1A]
URSUR 1A (URSUR1A) [URSU1A]
URTAN 1A (URTAN1A) [URTA1A]
URTOB 1A (URTOB1A) [URTO1A]
XOTAT 1 (XOTAT1) [XOTAT1]

DEPARTURES
(RWY 12)

MINIMUM CROSSING ALTITUDE	MINIMUM CROSSING ALTITUDE
NLD V-37	2500
DEVOE UJ-11E	2000
REX V-10	2100
BRO V-70	2000
REX V-35	2100
MAM V-64	2000
CUN	2000
CVM V-15	2000
ITBEN V-19	5000
SLP	10500
CDR V-26	9100
RABAX V-37	4300
ADN DRT	3200
OMISI	4300
PNG V-15	2000
NOTAL V-19	3200

These SIDs require a minimum climb gradient:
 OVEMA 1A, URTAN 1A: 220 FT/NM (3.62%) to 7000.
 Gnd speed-KT 75 100 150 200 250 300
 220 FT/NM 275 367 550 733 917 1100



SID	INITIAL CLIMB
EMAKI 1A	Climb on MTY R114 to D11.0 MTY, turn LEFT heading 048° to intercept MTY R084 to EMAKI and then continue on the assigned route or in accordance with ATC instructions.
MONTERREY 1A	Climb on MTY R114 to D8.0 MTY (or 2800 in case of DME failure), turn LEFT within 11 NM to MTY VOR and depart the station at the MCA for the assigned route or in accordance with ATC instructions.
OVEMA 1A URTAN 1A	Climb on MTY R114 to D8.0 MTY, turn LEFT and proceed on the D11.0 Arc until intercepting the corresponding radial from MTY VOR to OVEMA or URTAN. Continue on assigned route or in accordance with ATC instructions.
URSUR 1A URTOB 1A	Climb on MTY R114 to D8.0 MTY, turn RIGHT and proceed on the D11.0 Arc until intercepting the corresponding radial from MTY VOR to URSUR or URTOB. Continue on assigned route or in accordance with ATC instructions.
XOTAT 1	Climb on MTY R114 to D11.0 MTY, turn LEFT heading 077° to intercept MTY R102 to XOTAT and then continue on the assigned route or in accordance with ATC instructions.

MMY / MTY
GEN MARIANO
ESCOBEDO INTL

CHANGES: RWY designator, procedures renumbered, climb gradient.

MONTERREY, MEXICO

MMMY / MTY
GEN MARIANO ESCOBEDO INTL

JEPPesen
16 FEB 24 10-3C EFF 22 Feb

MONTERREY Departure
119.75

Apt Elev
1276

Trans alt: 18500

GABLA 1 (GABLA1) [GABLA1]
MONTERREY 1B (MTY1B) [MTY1B]
OVEMA 1B (OVEMA1B) [OVEMA1B]
UBVIV 1 (UBVIV1) [UBVIV1]
URTAN 1B (URTAN1B) [URTA1B]
URTOB 1B (URTOB1B) [URTO1B]
URTUS 1A (URTUS1A) [URTU1A]
DEPARTURES (RWY 30)

MINIMUM CROSSING ALTITUDE

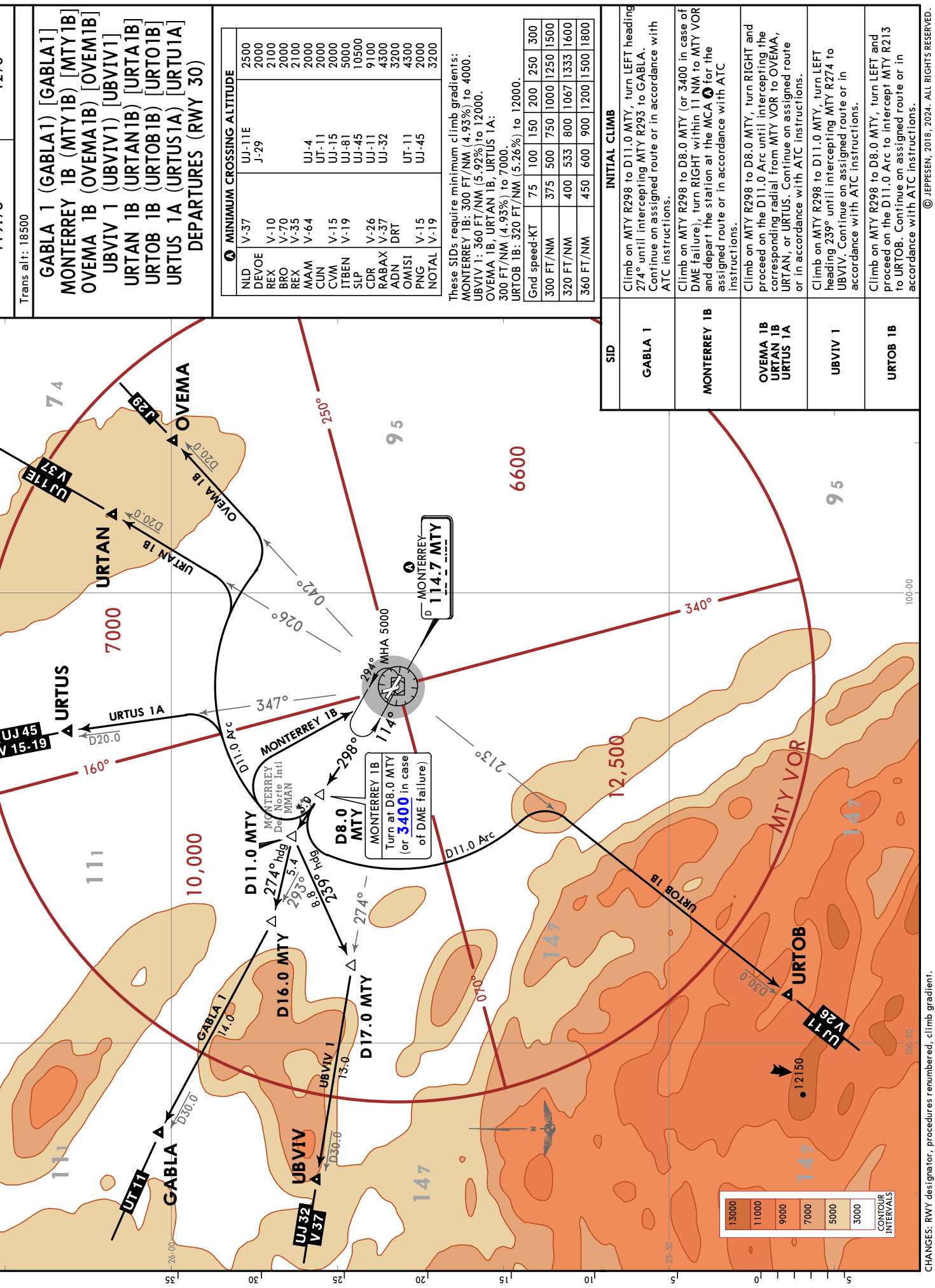
NLD	V-37	UJ-11E	J-29	2500
DEVOE	V-10	UJ-11E	J-29	2000
REX	V-70	UJ-11E	J-29	2100
BRO	V-35	UJ-4		2000
REX	V-64	UJ-11		2100
MAM	V-15	UJ-15		2000
CUN	V-19	UJ-81		2000
CVM	V-26	UJ-45		5000
ITBEN	V-37	UJ-11		10500
SLP	DRT	UJ-32		4300
CDR	DRT	UJ-11		9100
RABAX	DRT	UJ-32		3200
ADN	DRT	UJ-11		3200
OMISI	V-15	UJ-45		4300
PNG	V-19	UJ-45		2000
NOTAL	V-19	UJ-45		3200

These SID's require minimum climb gradients:
MONTERREY 1B: 300 FT/NM (4.93%) to 4000.
UBVIV 1: 360 FT/NM (5.92%) to 12000.
OVEMA 1B, URTAN 1B, URTUS 1A:
300 FT/NM (4.93%) to 7000.
URTOB 1B: 320 FT/NM (5.26%) to 12000.

Grnd speed-KT	75	100	150	200	250	300
300 FT/NM	375	500	750	1000	1250	1500
320 FT/NM	400	533	800	1067	1333	1600
360 FT/NM	450	600	900	1200	1500	1800

INITIAL CLIMB

Climb on MTY R298 to D11.0 MTY, turn LEFT heading 274° until intercepting MTY R293 to GABLA. Continue on assigned route or in accordance with ATC instructions.



CHANGES: RWY designator, procedures renumbered, climb gradient.

MMMY/MTY

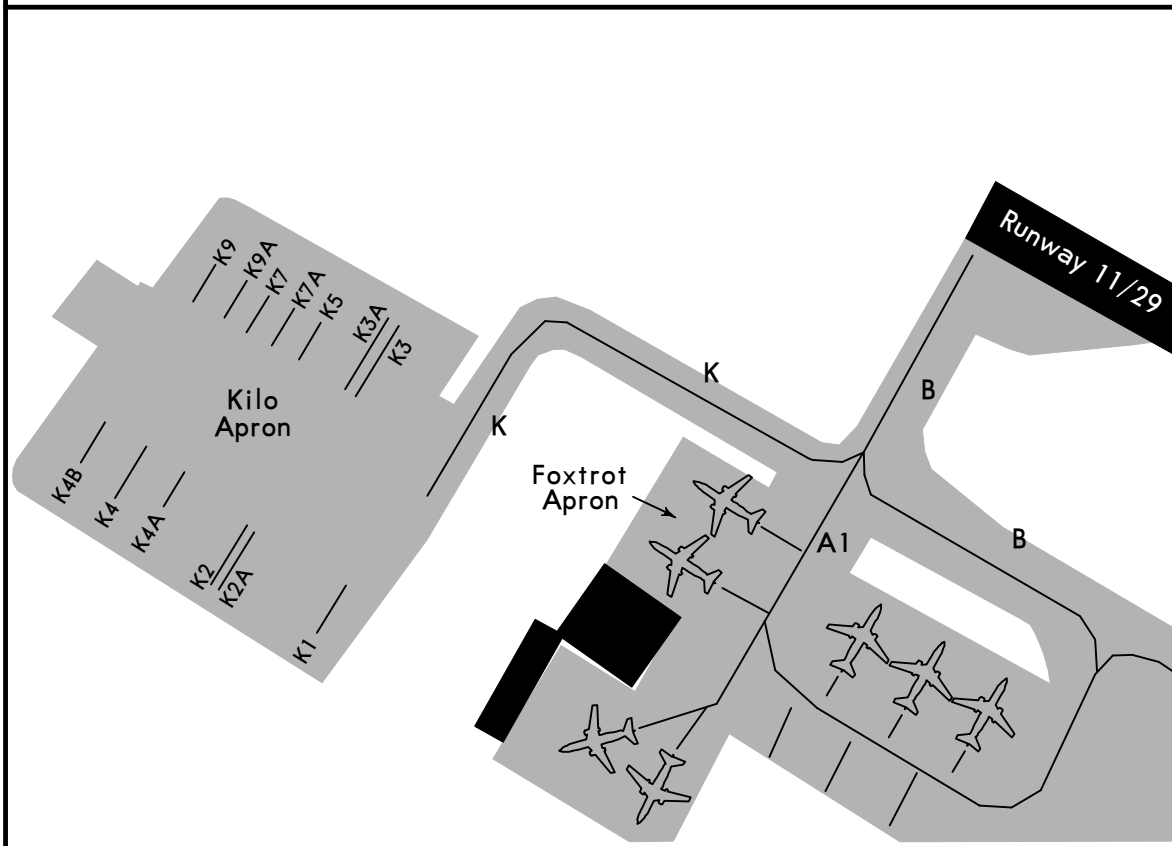
JEPPESEN

MONTERREY, MEXICO

5 MAR 21 (10-8)

GEN MARIANO ESCOBEDO INTL

**NEW KILO APRON AND PARKING POSITIONS
AT GEN MARIANO ESCOBEDO INTL AIRPORT**



PARKING STAND COORDINATES

STAND No.	COORDINATES
Kilo Apron	
K1, K2, K2A	N25 46.9 W100 07.3
K3, K3A	N25 47.0 W100 07.3
K4, K4A, K4B	N25 46.9 W100 07.4
K5, K7, K7A, K9, K9A	N25 47.0 W100 07.3

MMMY/MTY

Apt Elev **1276'**
N25 46.7 W100 06.4

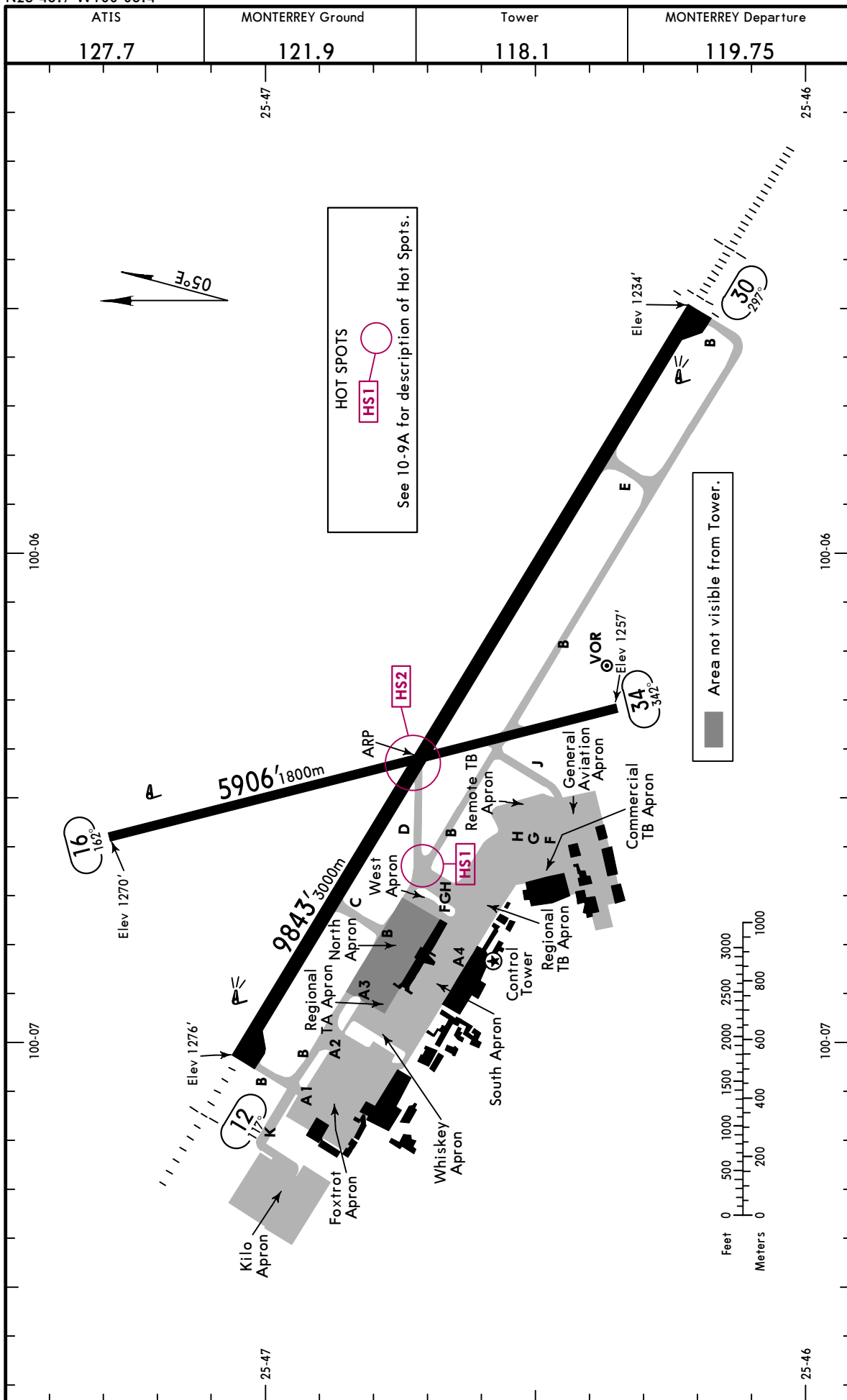
JEPESEN

27 SEP 24
Eff 3 Oct

10-9

MONTERREY, MEXICO

GEN MARIANO ESCOBEDO INTL



MMMY/MTY



MONTERREY, MEXICO
GEN MARIANO ESCOBEDO INTL

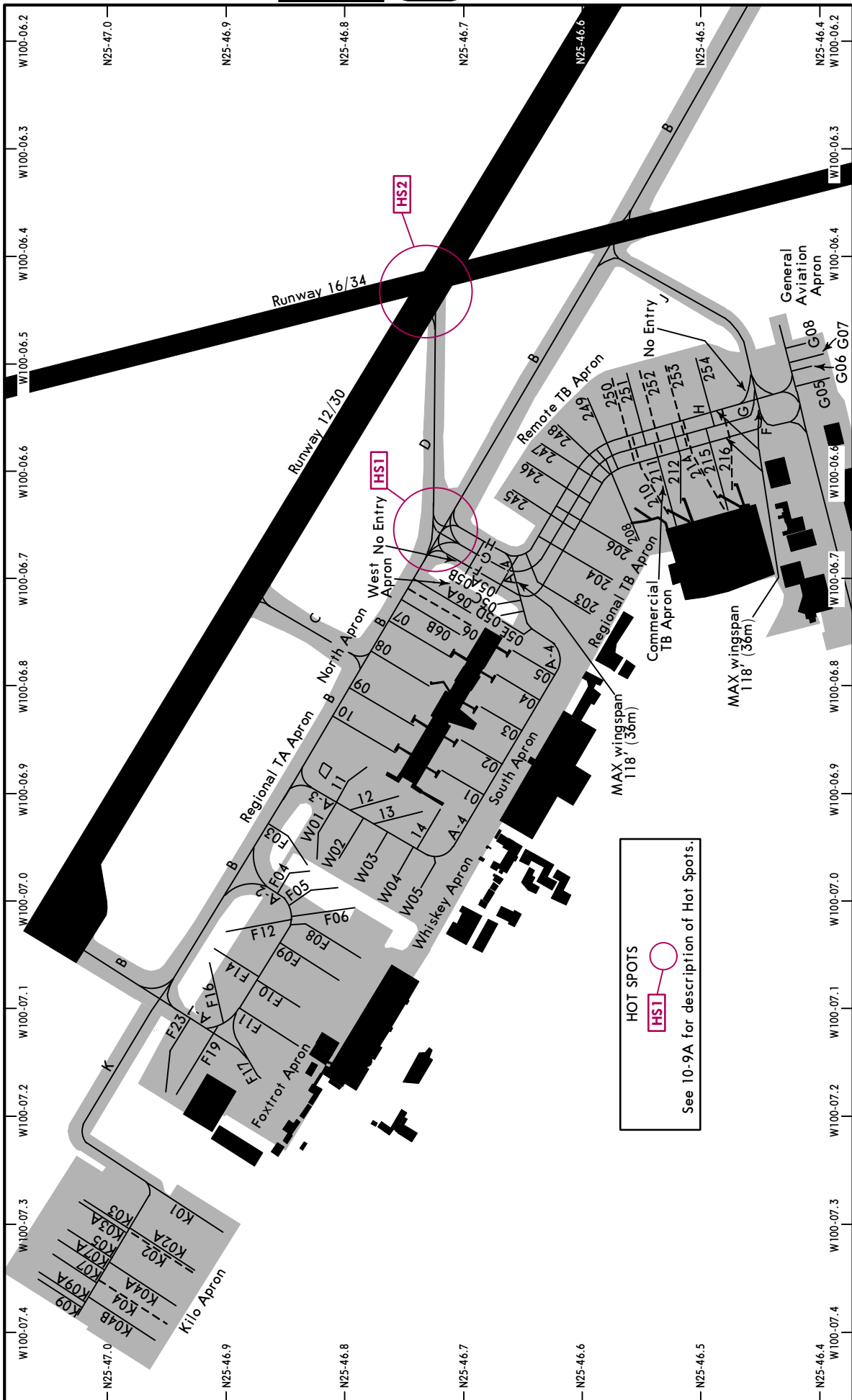
GENERAL						
Birds in vicinity of airport.						
ADDITIONAL RUNWAY INFORMATION						
RWY			USABLE LENGTHS		TAKE-OFF	WIDTH
			LANDING BEYOND			
			Threshold	Glide Slope		
12	HIRL SALSF REIL	PAPI-L (angle 3.0°)				148'
30	HIRL ALSF-I REIL	PAPI-L (angle 3.0°)		8793' 2680m		45m
16						98'
						30m
<p>1 Closed to aircraft weighing more than 88,185 lbs (40,000 kg).</p>						
HOT SPOTS HS 						
For information only, not to be construed as ATC instructions.						
HS1	Aircraft on Twy F or G heading towards Rwy 12: turn left and continue on Twy B. Aircraft heading towards Rwy 30 turn right and continue on Twy B.					
HS2	Aircrafts on Twy D shall stay at the holding point until the ATC clearance to enter Rwy 12/30 is provided.					
State TAKE-OFF						
1 HIRL & CL (spacing 15m or less) & relevant RVR	RL & CL & relevant RVR	RL & CL	2 RL & RCLM	2 RL or RCLM	Adequate Vis Ref	
					DAY	NIGHT
TDZ/Mid/Rollout R4 R125m	TDZ/Mid/Rollout R5 R150m	R6 R/V200m	R10 R/V300m	R12 R/V400m	R16 R/V500m	NA
1 TDZ/Mid/Rollout R3 or R75m with approved lateral guidance system.						
2 For NIGHT operations, at least RL or CL and RENL are required.						
<p>The TDZ RVR/VIS may be assessed by the pilot. Adequate visual reference means that a pilot is able to continuously indentify the take-off surface and maintain directional control. Take-off minimums which are relevant to the take-off manoeuvre itself, should not be confused with weather minimums required for flight initiation. Departure weather minimums at an aerodrome should not be less than the applicable minimums for landing at that aerodrome unless a suitable take-off alternate aerodrome is available. The take-off alternate aerodrome should have weather conditions and facilities suitable for landing the aeroplane in normal and non-normal configurations pertinent to the operation.</p>						

MMMY/MTY

JEPPesen
16 FEB 24
Eff 22 Feb

10-9B

MONTERREY, MEXICO
GEN MARIANO ESCOBEDO INTL



CHANGES: Parking chart revised.

© JEPPESEN, 2008, 2024. ALL RIGHTS RESERVED.

MMMY/MTY



MONTERREY, MEXICO

GEN MARIANO ESCOBEDO INTL

PARKING STAND COORDINATES	
STAND No.	COORDINATES
Commercial TB Apron	
206 208 211, 212, 214 thru 216	N25 46.6 W100 06.7 N25 46.5 W100 06.7 N25 46.5 W100 06.6
Foxtrot Apron	
F03 thru F06 F08 thru F12, F14, F16 F17, F19, F23	N25 46.8 W100 07.0 N25 46.8 W100 07.1 N25 46.9 W100 07.2
General Aviation Apron	
G05 thru G08	N25 46.4 W100 06.5
Kilo Apron	
K01 thru K02A K04 thru K04B K03, K03A, K05, K07, K07A, K09, K09A	N25 46.9 W100 07.3 N25 46.9 W100 07.4 N25 47.0 W100 07.3
North Apron	
06, 06A 06B thru 09 10	N25 46.7 W100 06.7 N25 46.7 W100 06.8 N25 46.8 W100 06.9
South Apron	
01 02 thru 05	N25 46.7 W100 06.9 N25 46.7 W100 06.8
Regional TA Apron	
11, 12 13, 14	N25 46.8 W100 06.9 N25 46.7 W100 06.9
Regional TB Apron	
200 thru 204	N25 46.6 W100 06.7
Remote TB Apron	
245 thru 248 249 thru 251 252 thru 254	N25 46.6 W100 06.6 N25 46.6 W100 06.5 N25 46.5 W100 06.5
West Apron	
05A thru 05E	N25 46.7 W100 06.7
Whiskey Apron	
W01 thru W04 W05	N25 46.8 W100 07.0 N25 46.7 W100 07.0

MMMY/MTY
GEN MARIANO
ESCOBEDO INTL

JEPPESEN

MONTERREY, MEXICO

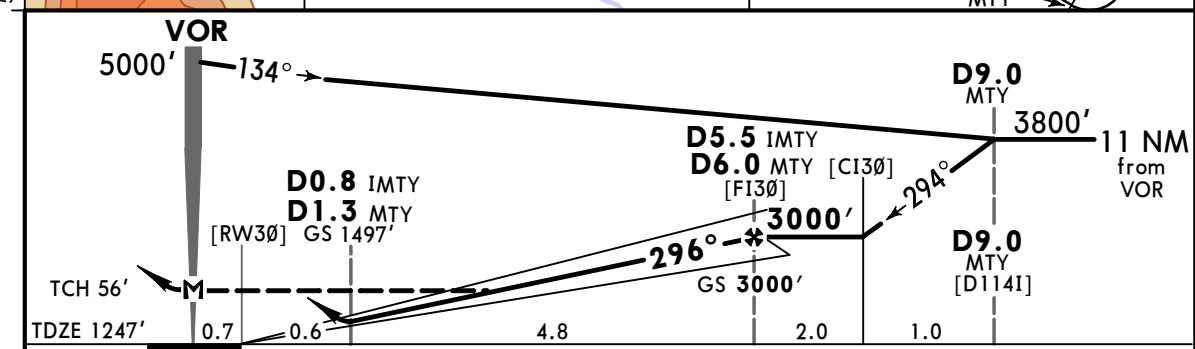
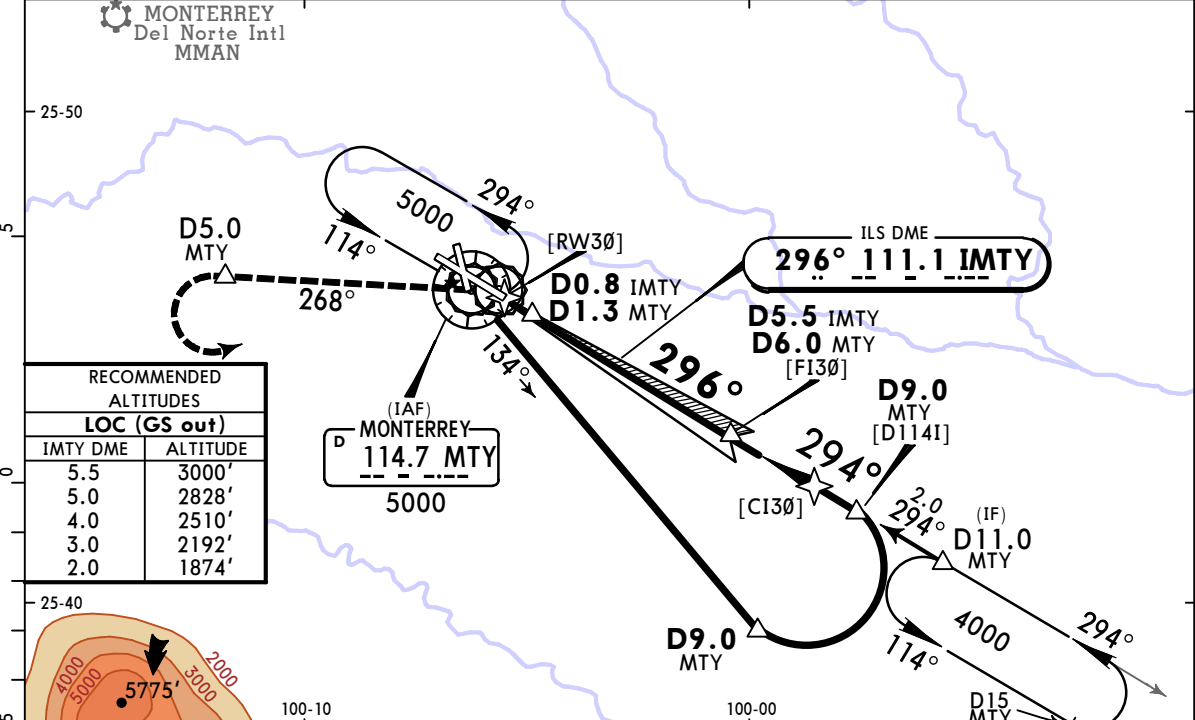
27 SEP 24

(11-1)

ILS Z or LOC Z Rwy 30

Eff 3 Oct

*ATIS 127.7	MONTERREY Approach (R) 119.75	MONTERREY Arrival 120.4	MONTERREY Tower 118.1	Ground 121.9
LOC IMTY 111.1	Final Apch Crs 296°	D5.5 IMTY D6.0 MTY 3000' (1753')	ILS DA(H) 1497' (250')	Apt Elev 1276' TDZE 1247'
MISSED APCH: Climb outbound on MTY VOR R-268 to D5.0 MTY then turn LEFT within 8 NM to MTY VOR to the minimum holding altitude.				
Alt Set: IN (MB on req)		Trans level: FL195	Trans alt: 18500'	
1. VOR/DME required. 2. ILS DME only usable by aircraft equipped with instruments that can read with a precision of 0.20 NM increments. 3. Do not simultaneously use holding patterns at the same altitude.				



Gnd speed-Kts	70	90	100	120	140	160	ALSF-I REIL PAPI	on 114.7 R-268 D5.0 MTY	
GS	3.00°	372	478	531	637	743			849
MAP at VOR									
FAF to Threshold	5.4	4:38	3:36	3:14	2:42	2:19	2:02		

	STRAIGHT-IN LANDING				CIRCLE-TO-LAND	
	ILS		LOC (GS out)		Max Kts	MDA(H)
	DA(H)	ALS out	MDA(H)	ALS out		
A					90	1820'(544') V1
B	V1/2	V3/4	V1/2	V1	120	1820'(544') V1600m
C	V800m	V1200m	V800m	V1600m	140	1820'(544') V1 1/2 V2400m
D					165	1860'(584') V2 V3200m

MMY/MTY
GEN MARIANO
ESCOBEDO INTL

JEPPESSEN

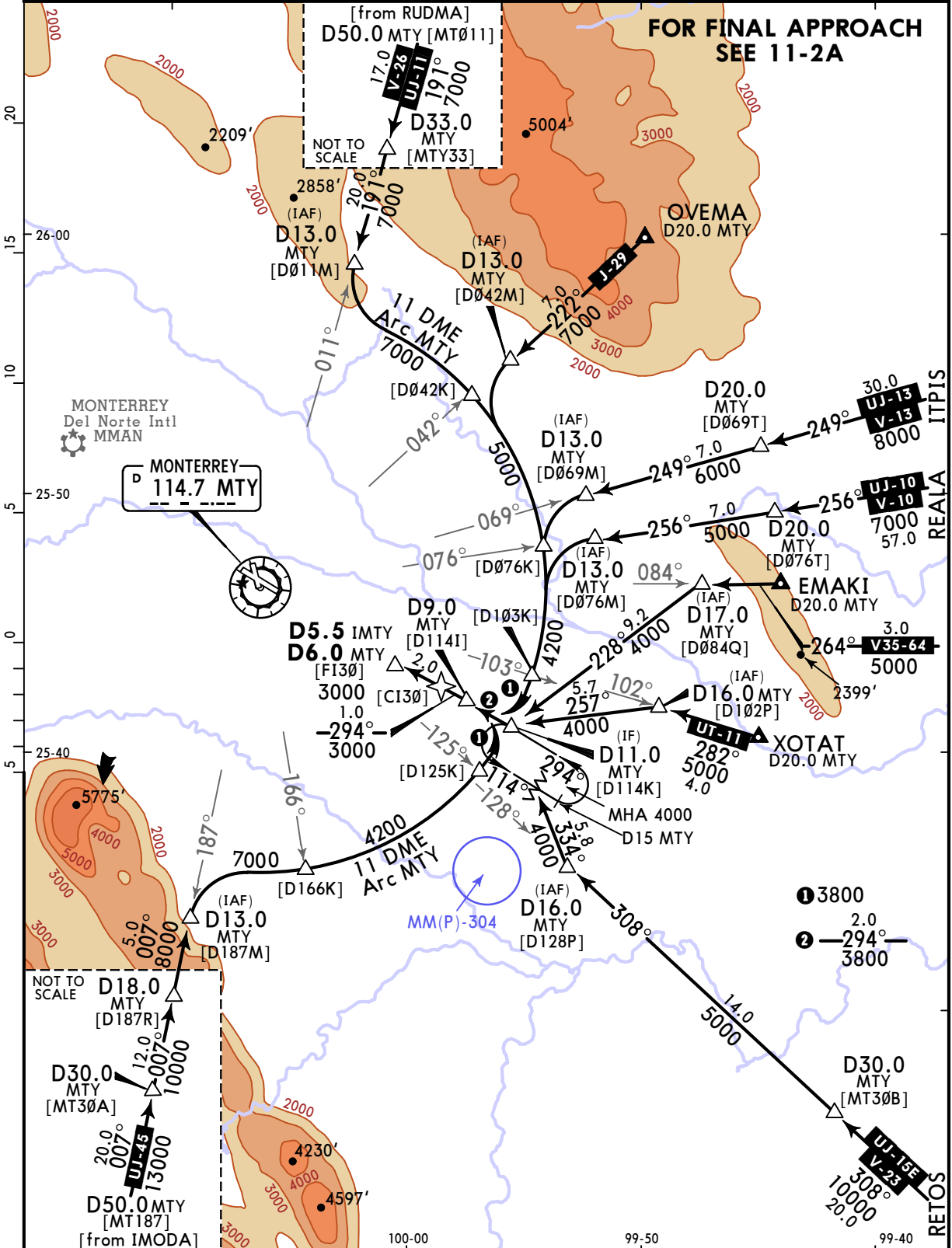
MONTERREY, MEXICO

27 SEP 24
 Eff 3 Oct

11-2

TRANSITIONS FOR ILS Y or LOC Y Rwy 30

*ATIS 127.7	MONTERREY Approach (R) 119.75	MONTERREY Arrival 120.4	MONTERREY Tower 118.1	Ground 121.9
FOR FINAL APPROACH SEE 11-2A				<p>MSA MTY VOR</p>
Alt Set: IN (MB on req)		Trans level: FL195	Trans alt: 18500'	
1. VOR/DME required. 2. ILS DME only usable by aircraft equipped with instruments that can read with a precision of 0.20 NM increments. 3. Do not simultaneously use holding patterns at the same altitude. 4. In case of DME failure at any point of the procedure, maintain last assigned altitude and proceed to the station according to ATC instructions.				



CHANGES: Procedure title.

MMY/MTY
GEN MARIANO
ESCOBEDO INTL

JEPPESEN

MONTERREY, MEXICO

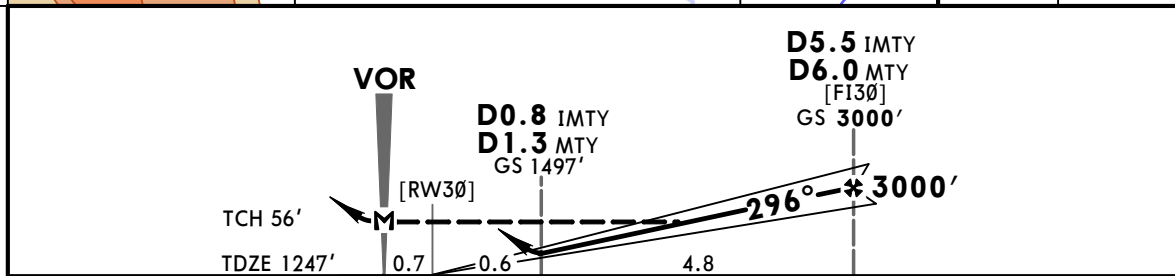
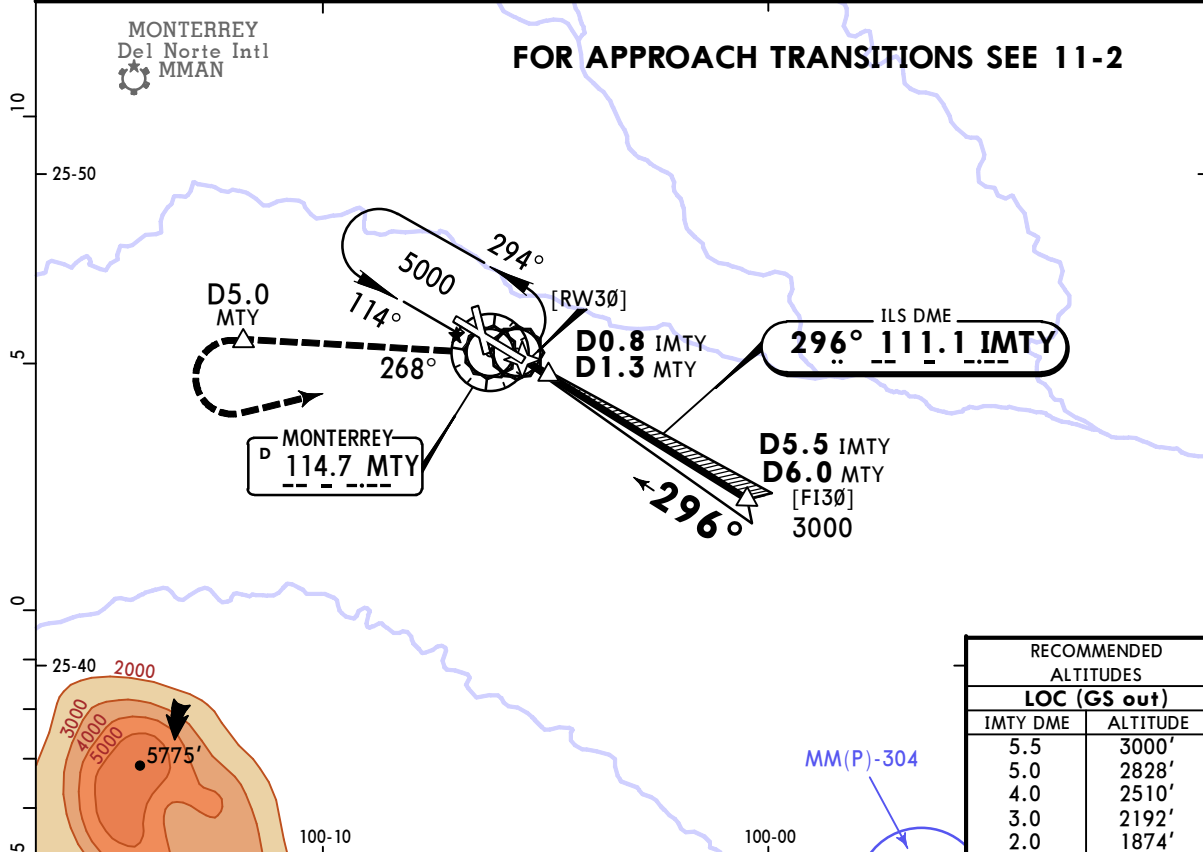
27 SEP 24

11-2A

ILS Y or LOC Y Rwy 30

Eff 3 Oct

*ATIS 127.7	MONTERREY Approach (R) 119.75	MONTERREY Arrival 120.4	MONTERREY Tower 118.1	Ground 121.9
LOC IMTY 111.1	Final Apch Crs 296°	D5.5 IMTY D6.0 MTY 3000' (1753')	ILS DA(H) 1497' (250')	Apt Elev 1276' TDZE 1247'
MISSED APCH: Climb outbound on MTY VOR R-268 to D5.0 MTY, then turn LEFT within 8 NM to MTY VOR to the minimum holding altitude.				<p>MSA MTY VOR</p>
Alt Set: IN (MB on req)		Trans level: FL195		
1. VOR/DME required. 2. ILS DME only usable by aircraft equipped with instruments that can read with a precision of 0.20 NM increments. 3. Do not simultaneously use holding patterns at the same altitude. 4. In case of DME failure at any point of the procedure, maintain last assigned altitude and proceed to the station according to ATC instructions.		Trans alt: 18500'		



Gnd speed-Kts	70	90	100	120	140	160	ALSF-I	↑ on 114.7 R-268	MTY D5.0 MTY	
GS	3.00°	372	478	531	637	743				REIL
MAP at VOR										PAPI
FAF to Threshold	5.4	4:38	3:36	3:14	2:42	2:19	2:02			

State	STRAIGHT-IN LANDING				CIRCLE-TO-LAND		
	ILS DA(H) 1497' (250')		LOC (GS out) MDA(H) 1600' (353')		Max Kts	MDA(H)	
	ALS out	ALS out	ALS out				
A					90	1820'(544')	V1
B	V1/2	V3/4	V1/2	V1	120	1820'(544')	V1600m
C	V800m	V1200m	V800m	V1600m	140	1820'(544')	V1 1/2 V2400m
D					165	1860'(584')	V2 V3200m

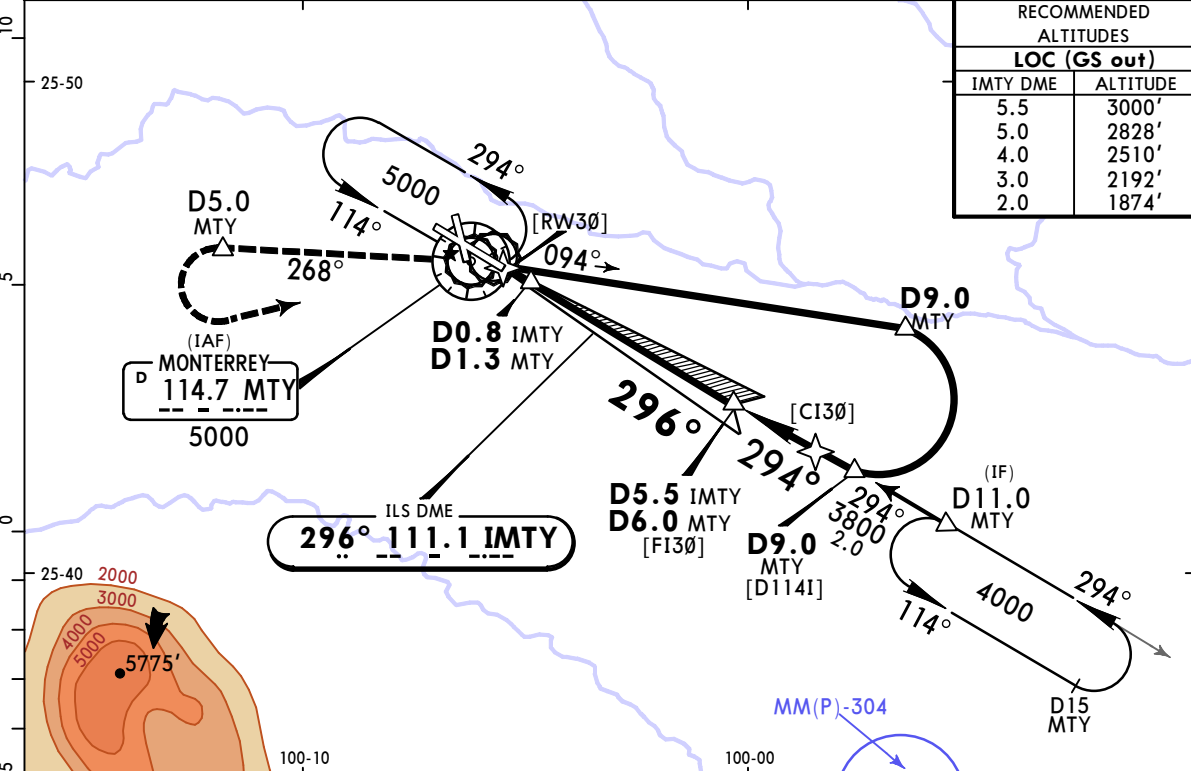
MMMY/MTY
GEN MARIANO
ESCOBEDO INTL

JEPPESEN MONTERREY, MEXICO

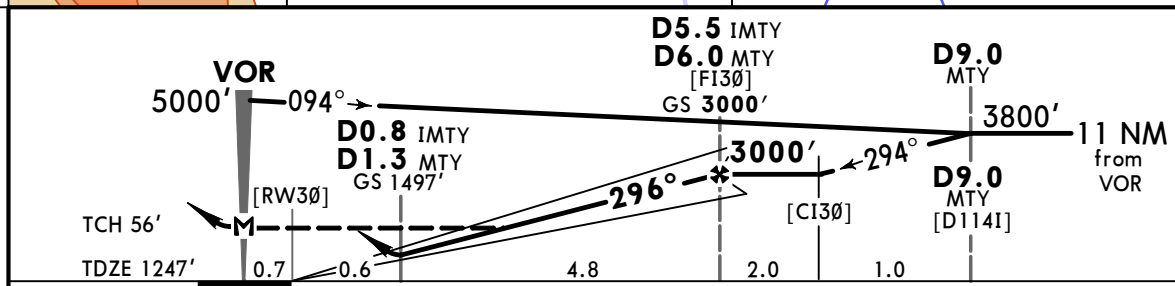
27 SEP 24
Eff 3 Oct (11-3)

ILS X or LOC X Rwy 30

*ATIS 127.7	MONTERREY Approach (R) 119.75	MONTERREY Arrival 120.4	MONTERREY Tower 118.1	Ground 121.9
LOC IMTY 111.1	Final Apch Crs 296°	D5.5 IMTY D6.0 MTY 3000' (1753')	ILS DA(H) 1497' (250')	Apt Elev 1276' TDZE 1247'
MISSED APCH: Climb outbound on MTY VOR R-268 to D5.0 MTY then turn LEFT within 8 NM to MTY VOR to the minimum holding altitude.				<p>MSA MTY VOR</p>
Alt Set: IN (MB on req)		Trans level: FL195	Trans alt: 18500'	
1. VOR/DME required. 2. ILS DME only usable by aircraft equipped with instruments that can read with a precision of 0.20 NM increments. 3. Do not simultaneously use holding patterns at the same altitude.				



RECOMMENDED ALTITUDES	
LOC (GS out)	
IMTY DME	ALTITUDE
5.5	3000'
5.0	2828'
4.0	2510'
3.0	2192'
2.0	1874'



Gnd speed-Kts	70	90	100	120	140	160	ALSF-I REIL PAPI 	on 114.7 R-268 MTY D5.0 MTY
GS	3.00°	372	478	531	637	849		
MAP at VOR								
FAF to Threshold	5.4	4:38	3:36	3:14	2:42	2:19		

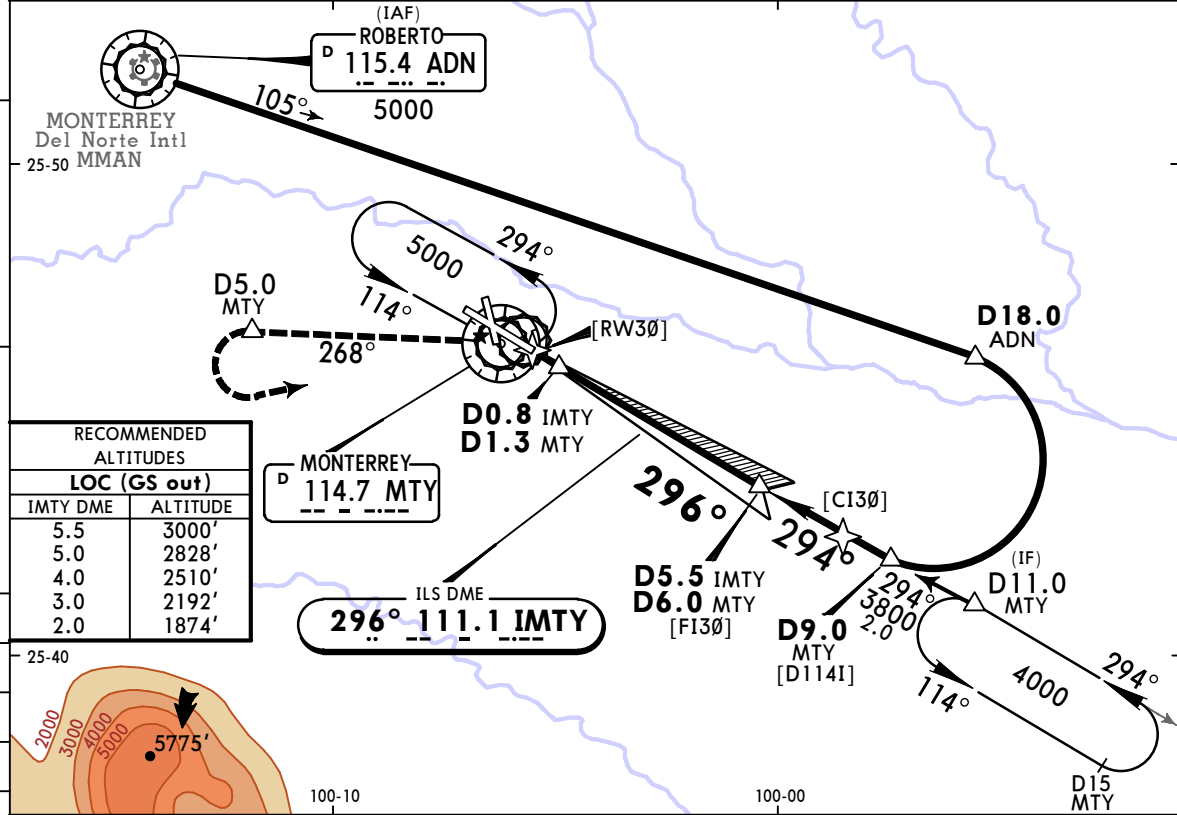
State STRAIGHT-IN LANDING				CIRCLE-TO-LAND			
ILS DA(H) 1497' (250')		LOC (GS out) MDA(H) 1600' (353')		ILS DA(H) 1497' (250')		LOC (GS out) MDA(H) 1600' (353')	
ALS out		ALS out		ALS out		ALS out	
A B C D	V1/2 V800m	V3/4 V1200m	V1/2 V800m	V1 V1600m	Max Kts	MDA(H)	
					90	1820'(544')	V1 V1600m
					120	1820'(544')	V1 1/2 V2400m
					140	1820'(544')	V2 V3200m
					165	1860'(584')	

MMMY/MTY
GEN MARIANO
ESCOBEDO INTL

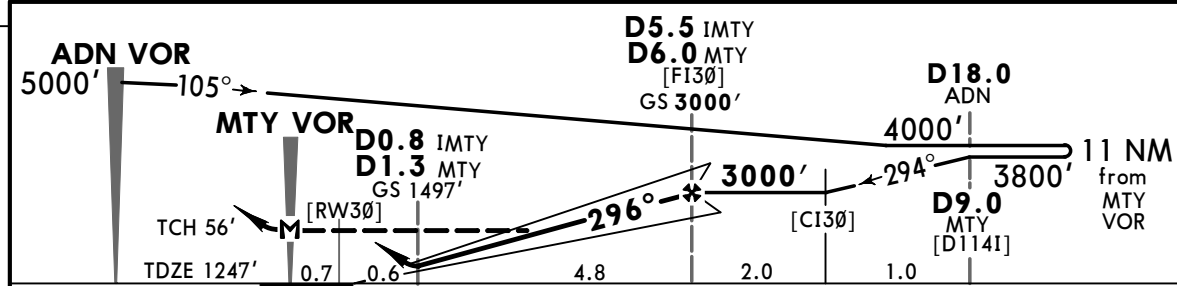
JEPPESEN MONTERREY, MEXICO

27 SEP 24 **(11-4)** ILS W or LOC W Rwy 30
Eff 3 Oct

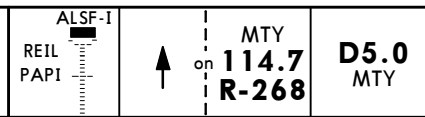
*ATIS 127.7	MONTERREY Approach (R) 119.75	MONTERREY Arrival 120.4	MONTERREY Tower 118.1	Ground 121.9
LOC IMTY 111.1	Final Apch Crs 296°	D5.5 IMTY D6.0 MTY 3000' (1753')	ILS DA(H) 1497' (250')	Apt Elev 1276' TDZE 1247'
MISSED APCH: Climb outbound on MTY VOR R-268 to D5.0 MTY then turn LEFT within 8 NM to MTY VOR to the minimum holding altitude.				<p>MSA MTY VOR</p>
Alt Set: IN (MB on req)		Trans level: FL195	Trans alt: 18500'	
1. VOR/DME required. 2. ILS DME only usable by aircraft equipped with instruments that can read with a precision of 0.20 NM increments. 3. Do not simultaneously use holding patterns at the same altitude.				



RECOMMENDED ALTITUDES	
LOC (GS out)	
IMTY DME	ALTITUDE
5.5	3000'
5.0	2828'
4.0	2510'
3.0	2192'
2.0	1874'



Gnd speed-Kts	70	90	100	120	140	160
GS	3.00°	372	478	531	637	743
MAP at VOR						
FAF to Threshold	5.4	4:38	3:36	3:14	2:42	2:19

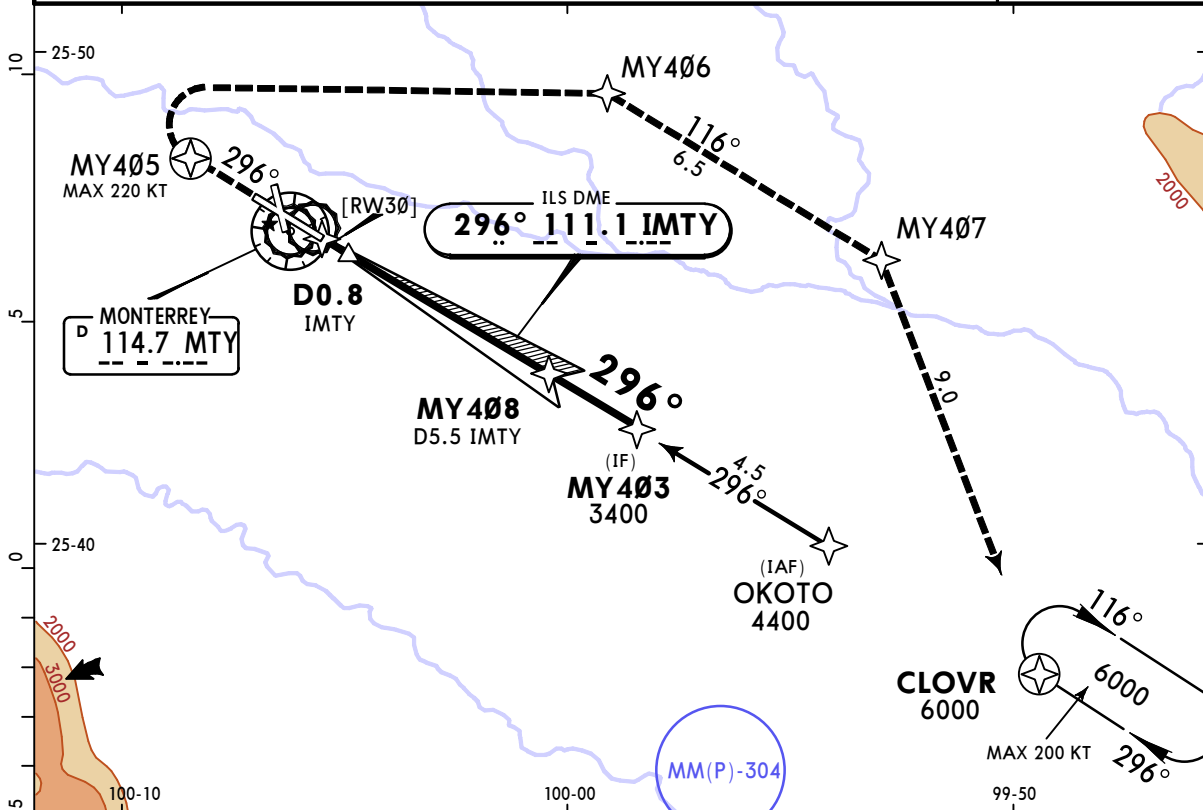


State STRAIGHT-IN LANDING				CIRCLE-TO-LAND	
ILS DA(H) 1497' (250')		LOC (GS out) MDA(H) 1600' (353')		Max Kts	MDA(H)
ALS out		ALS out			
A				90	1820'(544') V1
B	V1/2	V3/4	V1/2	120	1820'(544') V1600m
C	V800m	V1200m	V800m	140	1820'(544') V1 1/2 V2400m
D			V1	165	1860'(584') V2 V3200m

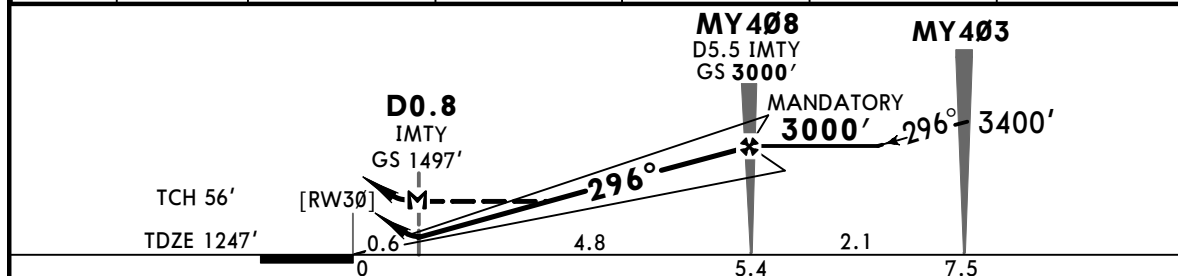
MMMY/MTY
GEN MARIANO
ESCOBEDO INTL

JEPPESEN MONTERREY, MEXICO
 27 SEP 24 **(11-5)** ILS V or LOC V Rwy 30
Eff 3 Oct

*ATIS 127.7	MONTERREY Approach (R) 119.75	MONTERREY Arrival 120.4	MONTERREY Tower 118.1	Ground 121.9
LOC IMTY 111.1	Final Apch Crs 296°	MY408 MANDATORY 3000' (1753')	ILS DA(H) 1497' (250')	Apt Elev 1276' TDZE 1247'
MISSED APCH: Climb on runway track to MY405, proceed on the missed approach to CLOVR and climb on holding pattern to 6000'.				<p>MSA MTY VOR</p>
Alt Set: IN (MB on req)		Trans level: FL195	Trans alt: 18500'	
1. DME required. 2. GNSS required. 3. For initial, intermediate and missed approach, RNAV 1 is required.				



LOC (GS out)	IMTY DME	1.0	2.0	3.0	4.0	5.5
	ALTITUDE	1600'	1920'	2240'	2560'	3000'



Gnd speed-Kts	70	90	100	120	140	160	ALSF-I	REIL PAPI	↑ on Rwy track	MY405
GS	3.00°	372	478	531	637	743				
MAP at D0.8										
MY408 to MAP	4.8	4:07	3:12	2:53	2:24	2:03	1:48			

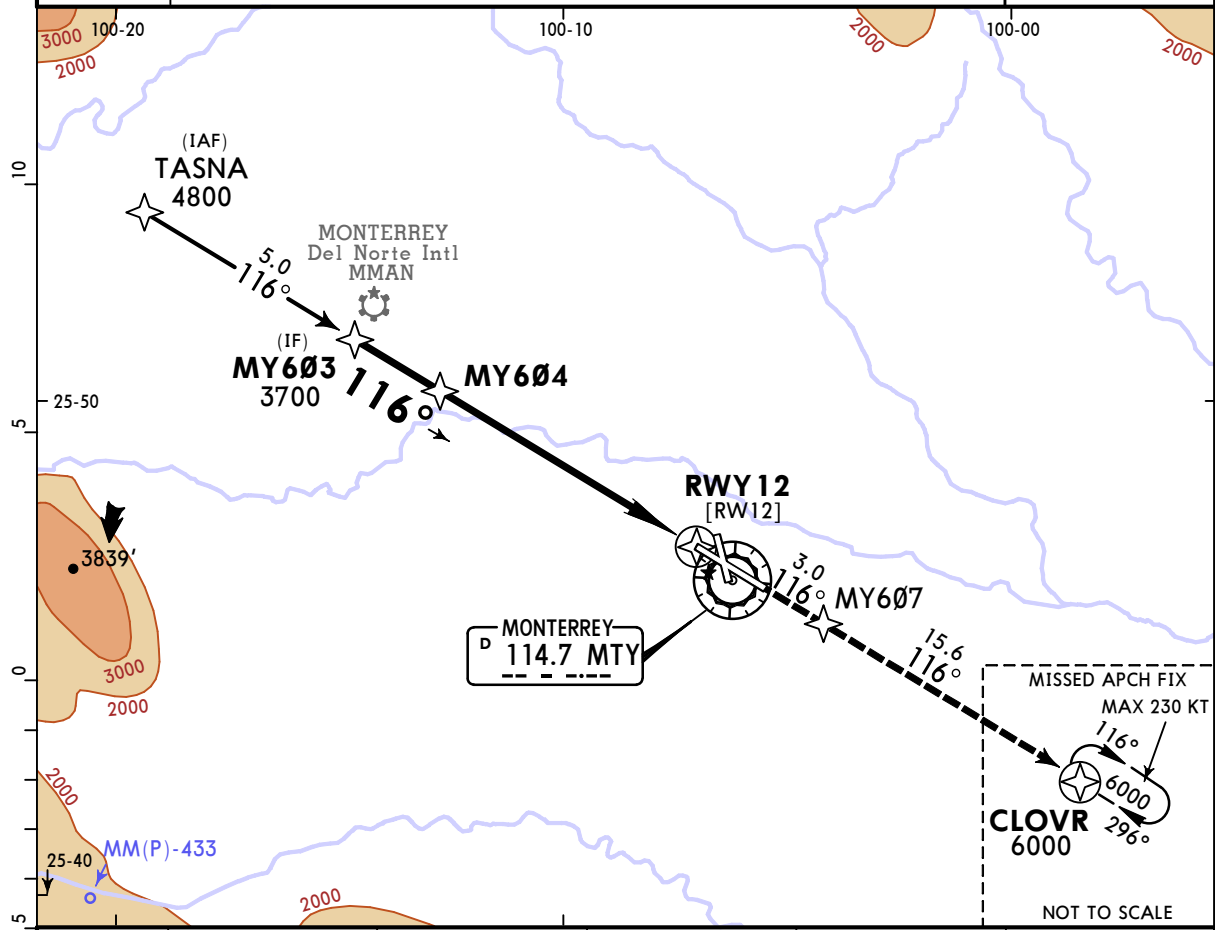
State					STRAIGHT-IN LANDING		CIRCLE-TO-LAND		
ILS DA(H) 1497' (250')		LOC (GS out) MDA(H) 1600' (353')			Max Kts	MDA(H)			
ALS out		ALS out				90	1820' (544')	V1	
A					120	1820' (544')	V1 1/2		
B	V1/2	V3/4	V1/2	V1	140	1820' (544')	V2400m		
C	V800m	V1200m	V800m	V1600m	165	1860' (584')	V2		
D							V3200m		

CHANGES: Procedure title, note.

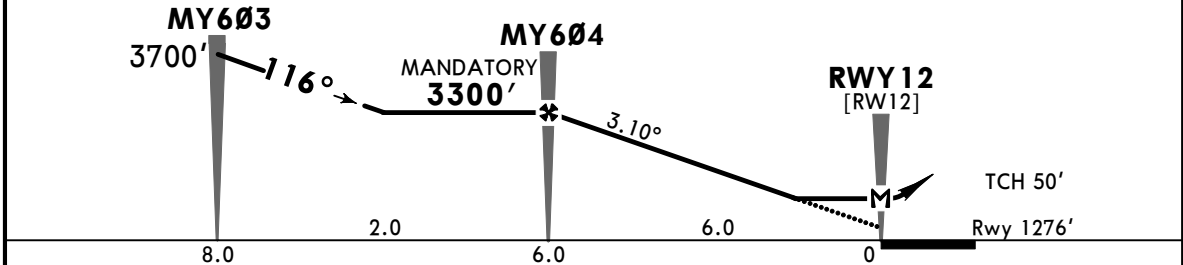
MMMY/MTY GEN MARIANO ESCOBEDO INTL **JEPPESEN MONTERREY, MEXICO** RNP Rwy 12

27 SEP 24
Eff 3 Oct (12-1)

*ATIS 127.7	MONTERREY Approach (R) 119.75	MONTERREY Arrival 120.4	MONTERREY Tower 118.1	Ground 121.9	
RNAV	Final Apch Crs 116°	MY604 MANDATORY 3300' (2024')	LNAV MDA(H) 1740' (464')	Apt Elev 1276' Rwy 1276'	
MISSED APCH: Climb on runway track to MY607, proceed on the missed approach track to CLOVR and climb on holding pattern to 6000'.					
Alt Set: IN (MB on req)		Trans level: FL195			Trans alt: 18500'
RNP Apch	GNSS required.				MSA MTY VOR



DIST to THR	6.0	5.0	4.0	3.0	2.0
ALTITUDE	3300'	2970'	2640'	2310'	1980'



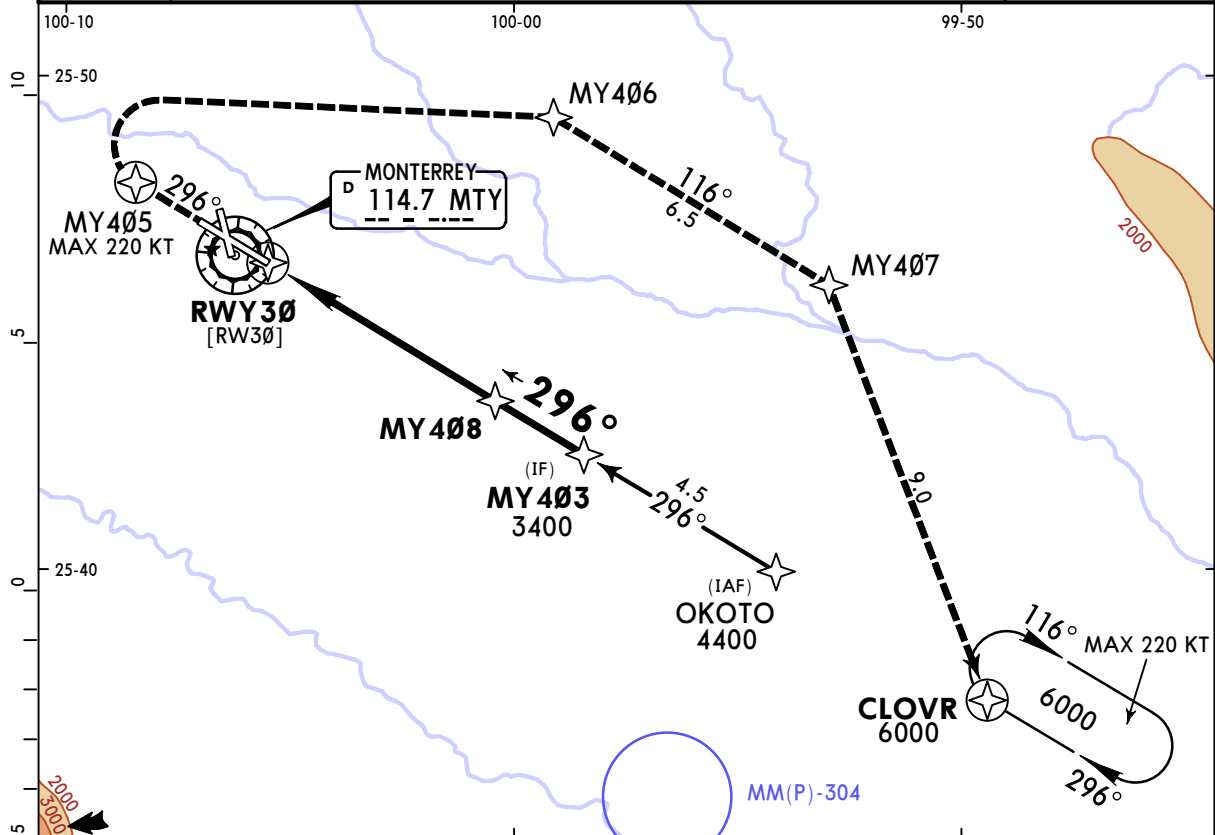
Gnd speed-Kts	70	90	100	120	140	160	SALS REIL PAPI Rwy track MY607
Descent Angle	3.10°	384	494	548	658	768	
MAP at RWY12							
MY604 to MAP	6.0	5:09	4:00	3:36	3:00	2:34	2:15

State				STRAIGHT-IN LANDING				CIRCLE-TO-LAND					
				LNAV									
				MDA(H) 1740' (464')									
				ALS out				Max Kts					
A	V1			V1600m			90	1820' (544')			V1	V1600m	
B	V1 1/4			V2000m			120	1820' (544')			V1 1/2	V2400m	
C	V1 1/2			V2400m			140	1860' (584')			V2	V3200m	
D							165						

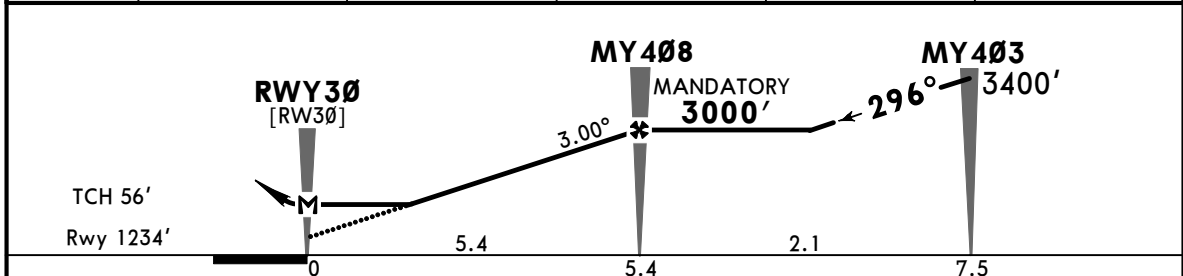
MMMY/MTY GEN MARIANO ESCOBEDO INTL **JEPPESEN MONTERREY, MEXICO** RNP Rwy 30

27 SEP 24
Eff 3 Oct (12-2)

*ATIS 127.7	MONTERREY Approach (R) 119.75	MONTERREY Arrival 120.4	MONTERREY Tower 118.1	Ground 121.9
RNAV	Final Apch Crs 296°	MY408 MANDATORY 3000' (1766')	LNAV MDA(H) 1760' (526')	Apt Elev 1276' Rwy 1234'
MISSED APCH: Climb on runway track to MY405, proceed on the missed approach track to CLOVR and climb on holding pattern to 6000'.				<p>MSA MTY VOR</p>
Alt Set: IN (MB on req)		Trans level: FL195	Trans alt: 18500'	
RNP Apch	GNSS required.			



DIST to THR	1.0	2.0	3.0	4.0	5.4
ALTITUDE	1600'	1920'	2240'	2560'	3000'



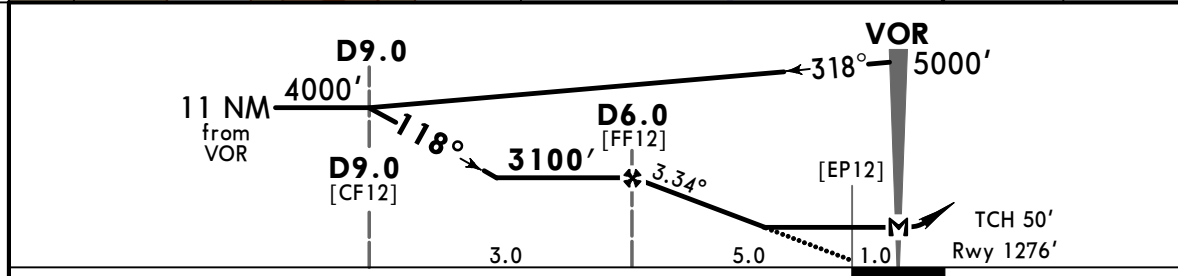
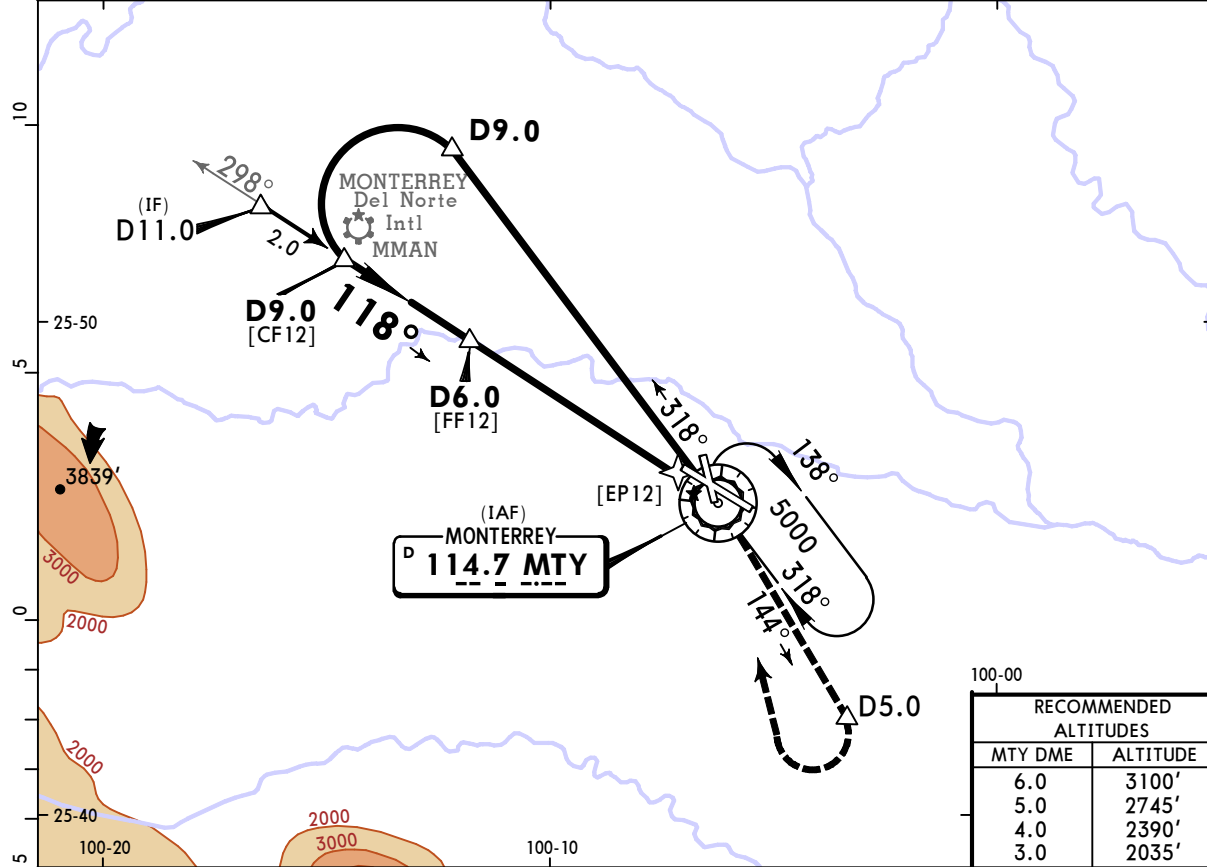
Gnd speed-Kts	70	90	100	120	140	160	
Descent Angle 3.00°	372	478	531	637	743	849	
MAP at RWY30							
MY408 to MAP	5.4	4:38	3:36	3:14	2:42	2:19	

State	STRAIGHT-IN LANDING		CIRCLE-TO-LAND	
	LNAV	ALS out	Max Kts	MDA(H)
A	V1	V1600m	90	1820' (544')
B	V1 1/4	V2000m	120	1820' (544')
C	V1 1/2	V2400m	140	1860' (584')
D	V2	V3200m	165	1860' (584')

MMMY/MTY GEN MARIANO ESCOBEDO INTL **JEPPESEN MONTERREY, MEXICO** VOR Z Rwy 12

16 FEB 24
Eff 22 Feb (13-1)

*ATIS	MONTERREY Approach (R)	MONTERREY Arrival	MONTERREY Tower	Ground
127.7	119.75	120.4	118.1	121.9
VOR MTY 114.7	Final Apch Crs 118°	D6.0 3100' (1824')	MDA(H) 1740' (464')	Apt Elev 1276' Rwy 1276'
MISSED APCH: Climb outbound on MTY VOR R-144 to D5.0 MTY, then turn RIGHT within 8 NM to MTY VOR to the minimum holding altitude.				
Alt Set: IN (MB on req)		Trans level: FL195	Trans alt: 18500'	
DME required.				MSA MTY VOR



Gnd speed-Kts	70	90	100	120	140	160	SALSF REIL PAPI	↑ on 114.7 R-144	D5.0
Descent Angle 3.34°	414	532	591	709	827	946			
MAP at VOR or FAF to Threshold 5.0	4:17	3:20	3:00	2:30	2:09	1:53			

State STRAIGHT-IN LANDING					CIRCLE-TO-LAND					
MDA(H) 1740' (464')										
ALS out					Max Kts.	MDA(H)				
A	V1 V1600m				90	1820' (544')				V1 V1600m
B	V1 V1600m				120	1820' (544')				V1 1/2 V2400m
C	V1	V1600m	V1 1/4	V2000m	140	1820' (544')		V1 1/2	V2400m	
D	V1 1/4	V2000m	V1 1/2	V2400m	165	1860' (584')		V2	V3200m	

MMMY/MTY
GEN MARIANO ESCOBEDO INTL

JEPPesen
27 SEP 24
13-2 Eff 3 Oct

MONTERREY, MEXICO
TRANSITIONS FOR VOR Y Rwy 12

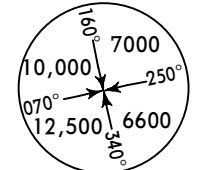
*ATIS 127.7	MONTERREY Approach (R) 119.75	MONTERREY Arrival 120.4	MONTERREY Tower 118.1	Ground 121.9
----------------	----------------------------------	----------------------------	--------------------------	-----------------

BRIEFING STRIP™

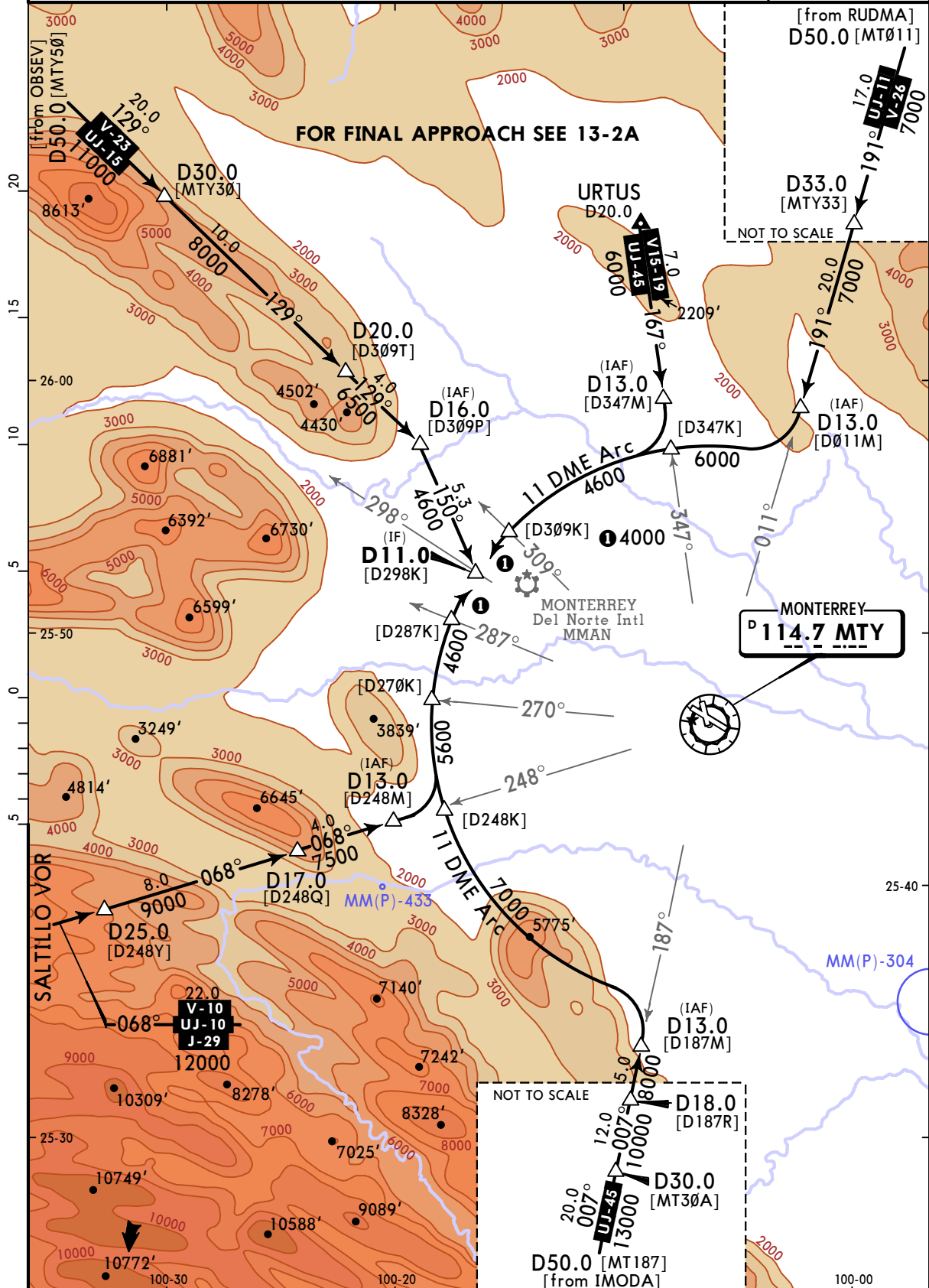
FOR FINAL APPROACH SEE 13-2A

Alt Set: IN (MB on req) Trans level: FL195 Trans alt: 18500'

1. DME required. 2. In case of DME failure at any point during the procedure, maintain last assigned altitude and proceed to the station in accordance with ATC instructions.



MSA MTY VOR
[from RUDMA]
D50.0 [MTØ11]



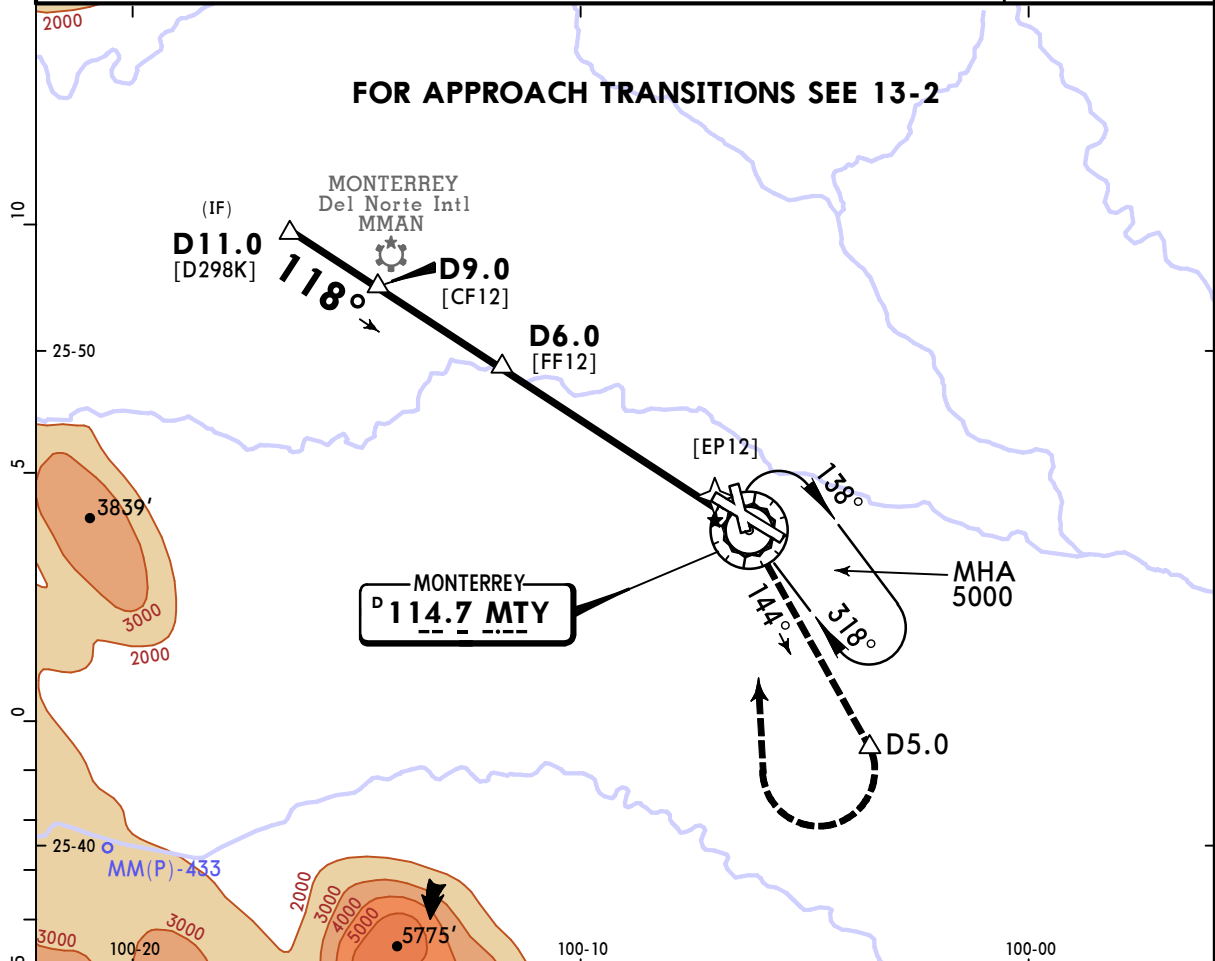
CHANGES: MM(P)-433 added.

© JEPPESEN, 2003, 2024. ALL RIGHTS RESERVED.

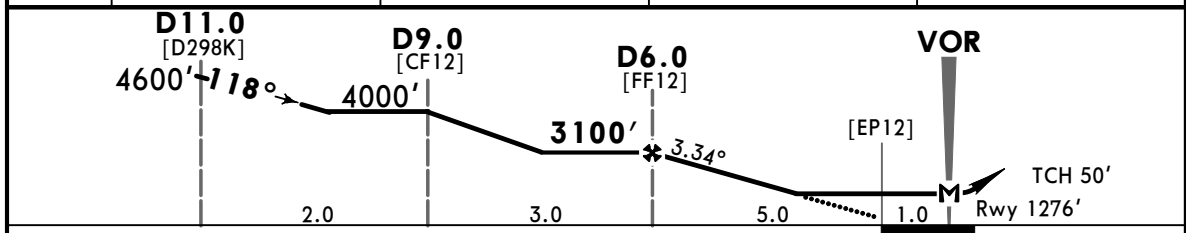
MMMY/MTY JEPPESEN MONTERREY, MEXICO

GEN MARIANO ESCOBEDO INTL 27 SEP 24 (13-2A) VOR Y Rwy 12

*ATIS 127.7	MONTERREY Approach (R) 119.75	MONTERREY Arrival 120.4	MONTERREY Tower 118.1	Ground 121.9
VOR MTY 114.7	Final Apch Crs 118°	D6.0 3100' (1824')	MDA(H) 1740' (464')	Apt Elev 1276' Rwy 1276'
MISSED APCH: Climb outbound on MTY VOR R-144 to D5.0 MTY, turn RIGHT within 8 NM to MTY VOR to the minimum holding altitude.				
Alt Set: IN (MB on req)		Trans level: FL195		
1. DME required. 2. In case of DME failure at any point during the procedure, maintain last assigned altitude and proceed to the station in accordance with ATC instructions.				



MTY DME	6.0	5.0	4.0	3.0
ALTITUDE	3100'	2745'	2390'	2035'



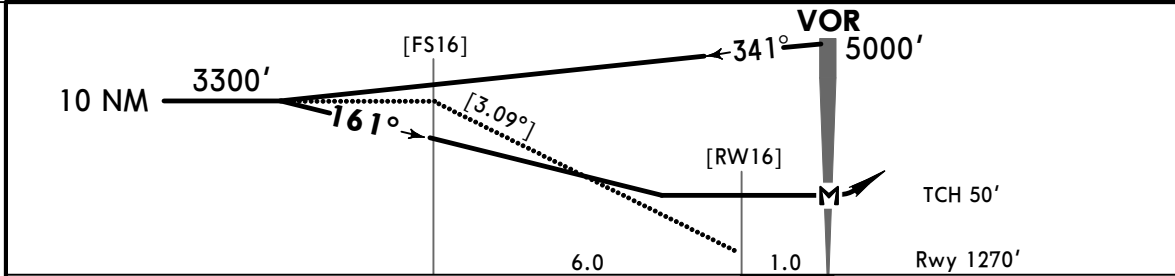
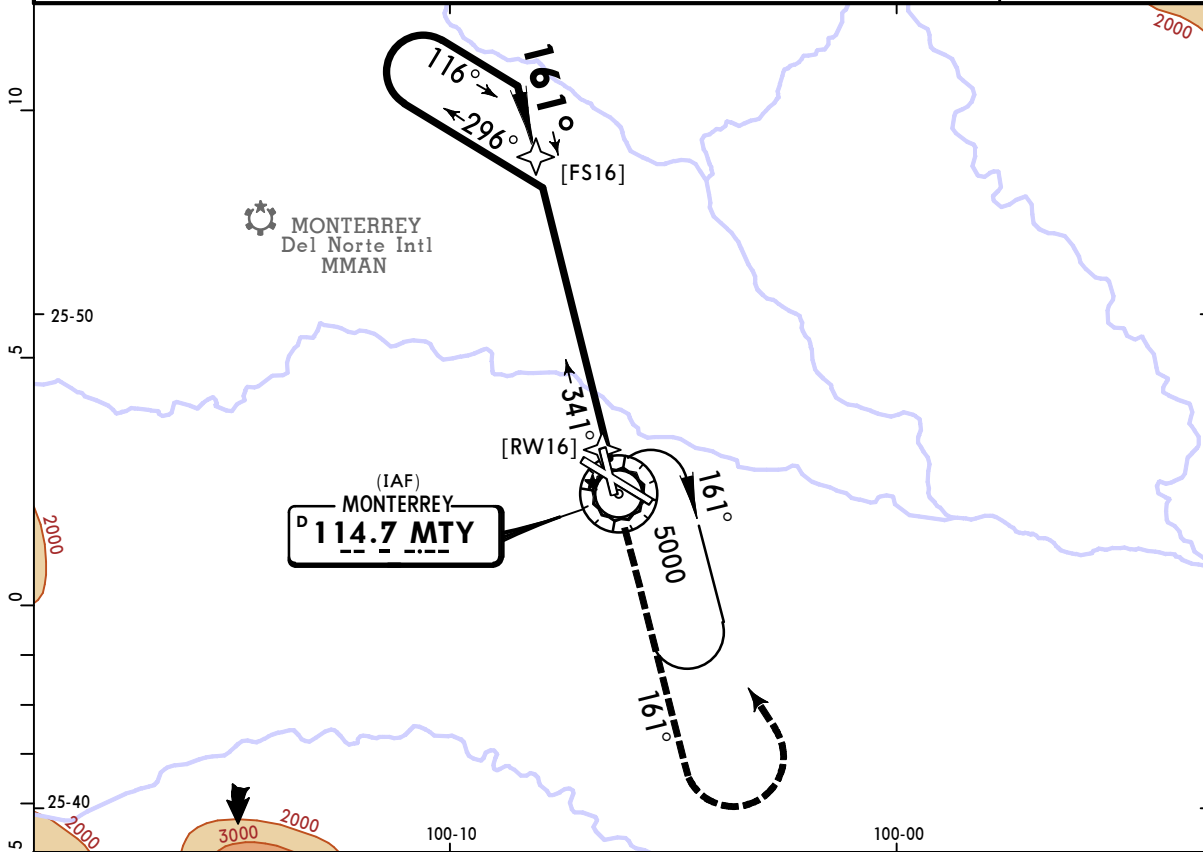
Gnd speed-Kts	70	90	100	120	140	160	SALSF REIL PAPI 	on 114.7 R-144	D5.0
Descent Angle 3.34°	414	532	591	709	827	946			
MAP at VOR or FAF to Threshold 5.0	4:17	3:20	3:00	2:30	2:09	1:53			

State					STRAIGHT-IN LANDING					CIRCLE-TO-LAND							
					MDA(H) 1740' (464')					Max Kts							
					ALS out					MDA(H)							
A	V1				V1600m				90	1820' (544')				V1 V1600m			
B	V1				V1600m				120	1820' (544')				V1 1/2 V2400m			
C	V1		V1600m		V1 1/4		V2000m		140	1820' (544')		V1 1/2		V2400m			
D	V1 1/4		V2000m		V1 1/2		V2400m		165	1860' (584')		V2		V3200m			

MMMY/MTY GEN MARIANO ESCOBEDO INTL

JEPPESEN MONTERREY, MEXICO
 16 FEB 24 **(13-3)** **CAT A, B & C** **VOR Rwy 16**
 Eff 22 Feb

*ATIS 127.7	MONTERREY Approach (R) 119.75	MONTERREY Arrival 120.4	MONTERREY Tower 118.1	Ground 121.9				
VOR MTY 114.7	Final Apch Crs 161°	No FAF	MDA(H) 1760' (490')	Apt Elev 1276' Rwy 1270'				
MISSED APCH: Climb outbound on MTY VOR R-161, then turn LEFT within 10 NM to MTY VOR to the minimum holding altitude.				<p>MSA MTY VOR</p>				
Gnd speed-Kts	80	100	120		140	160	180	200
Max Outbound Distance	7.0	5:15	4:12		3:30	3:00	2:37	2:20
Alt Set: IN (MB on req)		Trans level: FL195			Trans alt: 18500'			



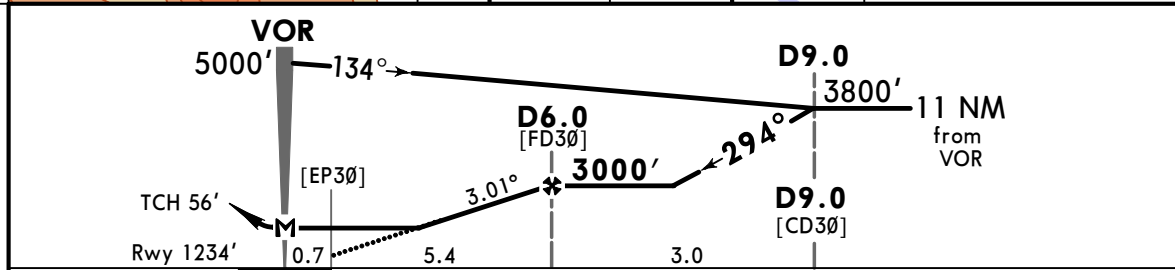
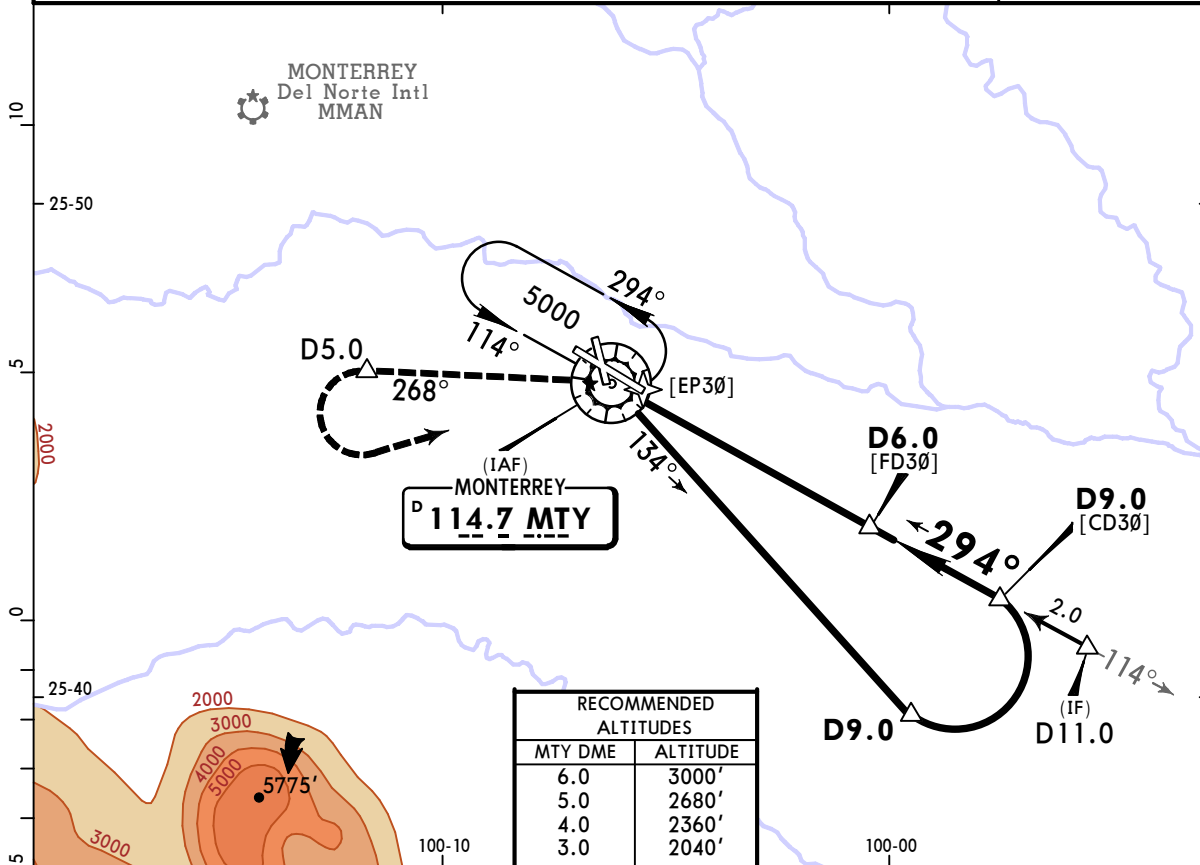
Gnd speed-Kts	70	90	100	120	140	160	↑ on 114.7 R-161
Descent Angle 3.09°	383	492	547	656	765	875	
MAP at VOR							

State	STRAIGHT-IN LANDING		CIRCLE-TO-LAND	
	MDA(H) 1760' (490')		Max Kts	MDA(H)
A	V1	V1600m	90	1820' (544')
B	V1 1/4	V2000m	120	1820' (544')
C	V1 1/2	V2400m	140	1820' (544')
D	NOT APPLICABLE		D	NOT APPLICABLE

MMMY/MTY JEPPESEN MONTERREY, MEXICO

GEN MARIANO ESCOBEDO INTL 16 FEB 24 **13-4** Eff 22 Feb VOR Z Rwy 30

*ATIS 127.7	MONTERREY Approach (R) 119.75	MONTERREY Arrival 120.4	MONTERREY Tower 118.1	Ground 121.9
VOR MTY 114.7	Final Apch Crs 294°	D6.0 3000' (1766')	MDA(H) 1760' (526')	Apt Elev 1276' Rwy 1234'
MISSED APCH: Climb outbound on MTY VOR R-268 to D5.0 MTY, then turn LEFT within 8 NM to MTY VOR to the minimum holding altitude.				<p>MSA MTY VOR</p>
Alt Set: IN (MB on req)		Trans level: FL195	Trans alt: 18500'	
DME required.				



Gnd speed-Kts	70	90	100	120	140	160	ALSF-I REIL PAPI ↑ on 114.7 R-268 D5.0
Descent Angle 3.01°	373	479	532	639	745	852	
MAP at VOR or FAF to Threshold	5.4	4:38	3:36	3:14	2:42	2:19	

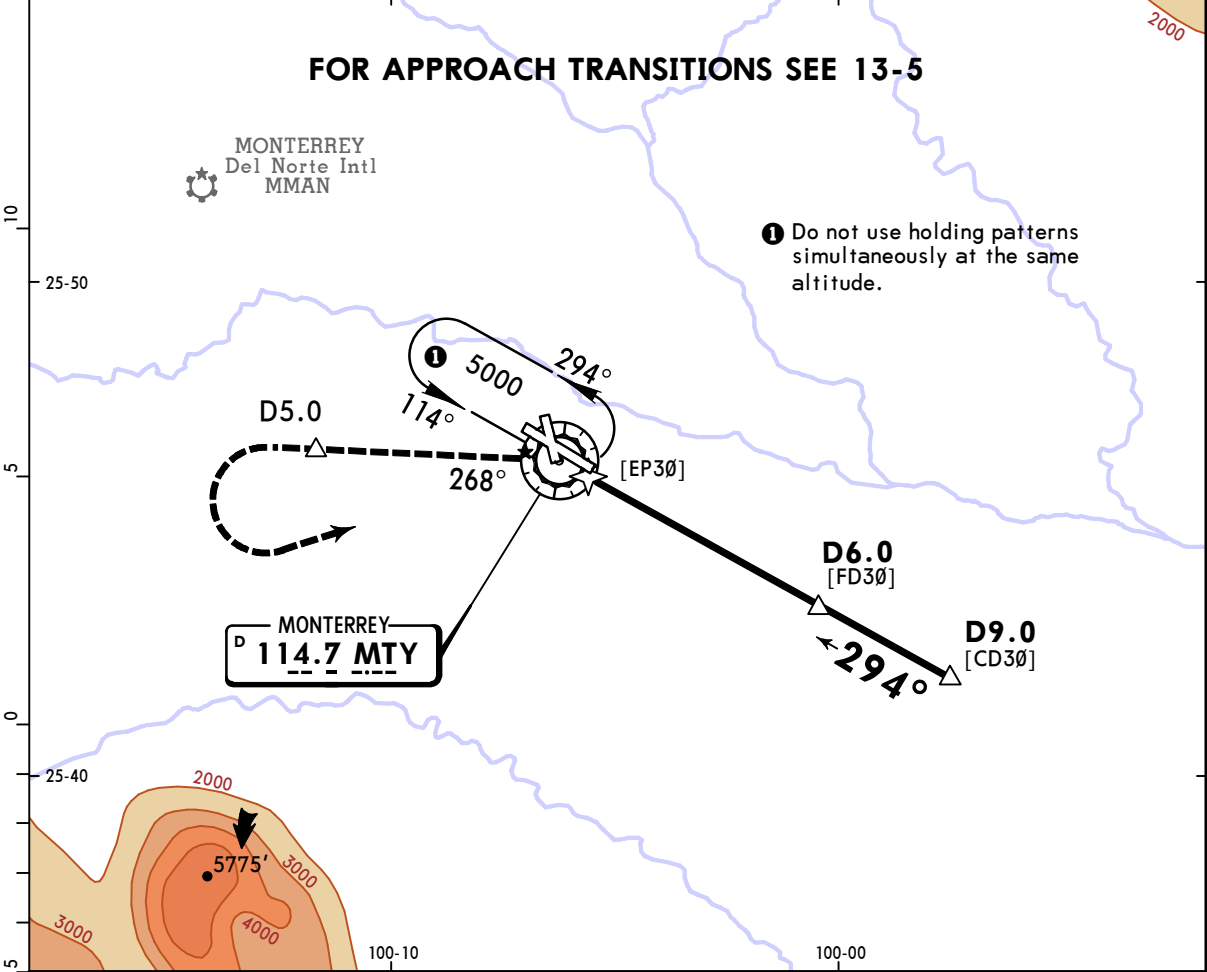
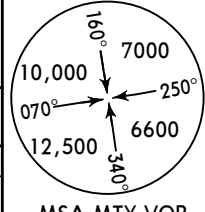
State STRAIGHT-IN LANDING				CIRCLE-TO-LAND			
MDA(H) 1760' (526')							
				ALS out		Max Kts.	MDA(H)
A	V1 V1600m					90	1820' (544') V1 V1600m
B						120	
C	V1 1/4	V2000m	V1 1/2	V2400m	140	1820' (544')	V1 1/2 V2400m
D	V1 1/2	V2400m	V1 3/4	V2800m	165	1860' (584')	V2 V3200m

JEPPESEN MONTERREY, MEXICO

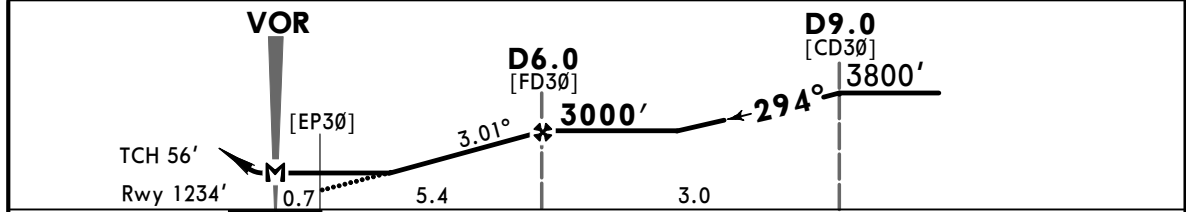
VOR Y Rwy 30

16 FEB 24 Eff 22 Feb 13-5A

*ATIS 127.7	MONTERREY Approach (R) 119.75	MONTERREY Arrival 120.4	MONTERREY Tower 118.1	Ground 121.9
VOR MTY 114.7	Final Apch Crs 294°	D6.0 3000' (1766')	MDA(H) 1760' (526')	Apt Elev 1276' Rwy 1234'
MISSED APCH: Climb outbound on MTY VOR R-268 to D5.0 MTY, then turn LEFT within 8 NM to MTY VOR to the minimum holding altitude.				
Alt Set: IN (MB on req)		Trans level: FL195		Trans alt: 18500'
1. DME required. 2. In case of DME failure at any point during the procedure, maintain last assigned altitude and proceed to the station in accordance with ATC instructions.				



MTY DME	3.0	4.0	5.0	6.0
ALTITUDE	2040'	2360'	2680'	3000'

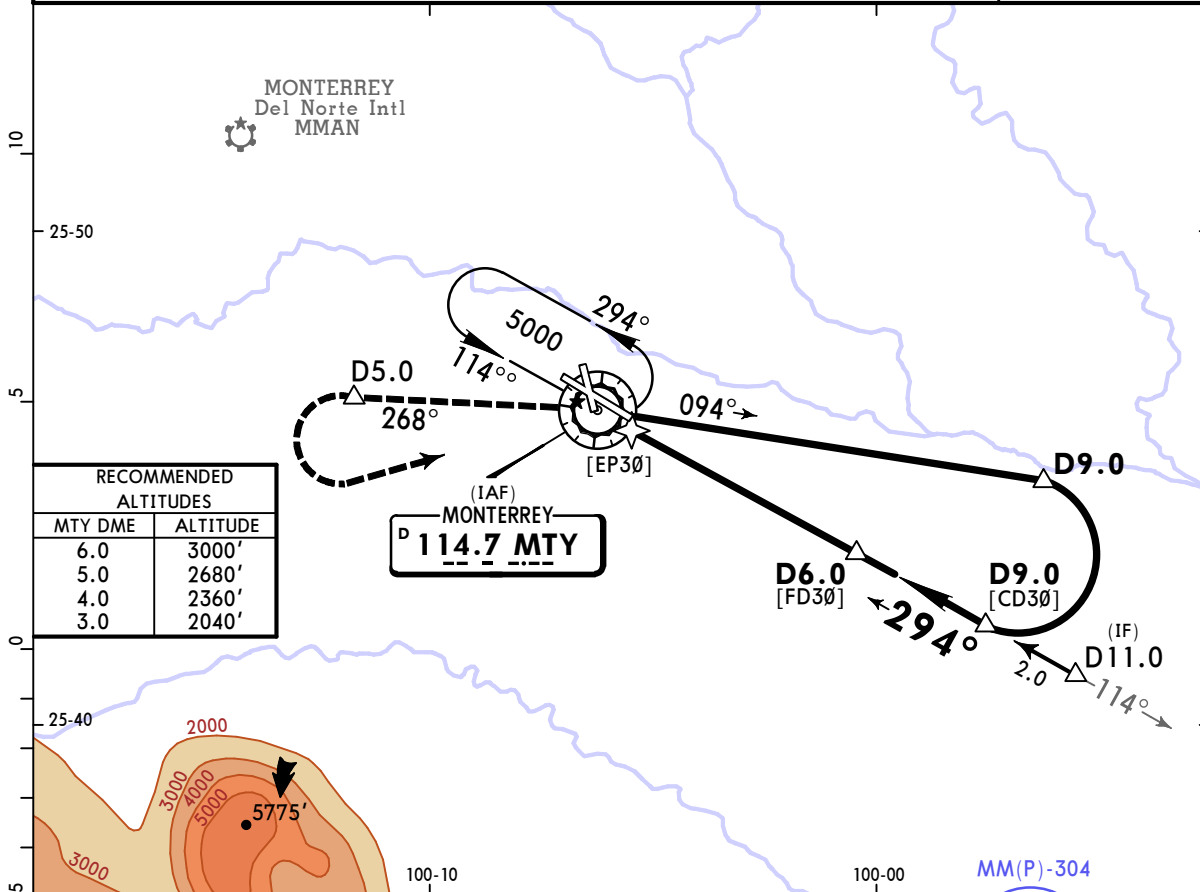


Gnd speed-Kts	70	90	100	120	140	160	ALSF-I REIL PAPI ↑ on 114.7 R-268	D5.0	
Descent Angle	3.01°	373	479	532	639	745			852
MAP at VOR or									
FAF to Threshold	5.4	4:38	3:36	3:14	2:42	2:19			2:02

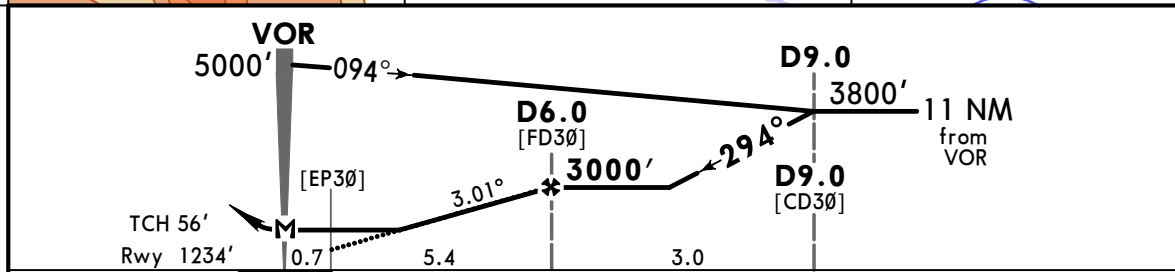
State				STRAIGHT-IN LANDING				CIRCLE-TO-LAND			
MDA(H) 1760' (526')											
ALS out											
A	V1 V1600m							Max Kts.			
B								90	1820' (544') V1 V1600m		
C	V1 1/4	V2000m	V1 1/2		V2400m			140	1820' (544') V1 1/2 V2400m		
D	V1 1/2	V2400m	V1 3/4		V2800m			165	1860' (584') V2 V3200m		

MMMY/MTY GEN MARIANO ESCOBEDO INTL 16 FEB 24 (13-6) Eff 22 Feb VOR X Rwy 30

*ATIS 127.7	MONTERREY Approach (R) 119.75	MONTERREY Arrival 120.4	MONTERREY Tower 118.1	Ground 121.9
VOR MTY 114.7	Final Apch Crs 294°	D6.0 3000' (1766')	MDA(H) 1760' (526')	Apt Elev 1276' Rwy 1234'
MISSED APCH: Climb outbound on MTY VOR R-268 to D5.0 MTY, then turn LEFT within 8 NM to MTY VOR to the minimum holding altitude.				
Alt Set: IN (MB on req)		Trans level: FL195		
DME required.		Trans alt: 18500'		



RECOMMENDED ALTITUDES	
MTY DME	ALTITUDE
6.0	3000'
5.0	2680'
4.0	2360'
3.0	2040'

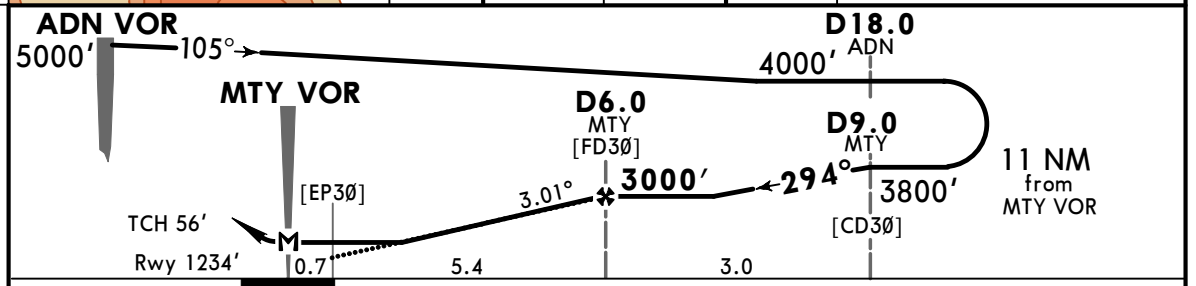
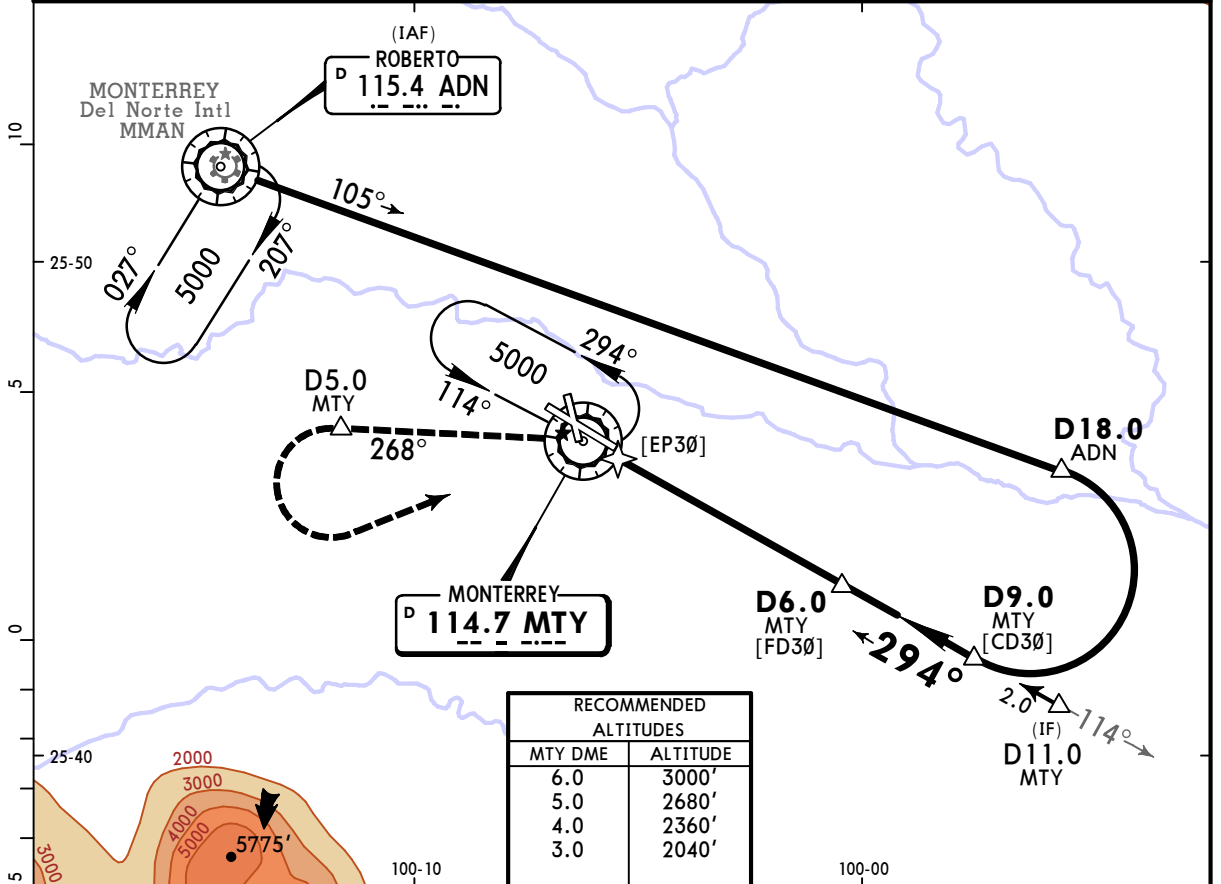


Gnd speed-Kts	70	90	100	120	140	160	ALSF-I REIL PAPI MTY on 114.7 R-268 D5.0
Descent Angle 3.01°	373	479	532	639	745	852	
MAP at VOR or							
FAF to Threshold	5.4	4:38	3:36	3:14	2:42	2:19	

State STRAIGHT-IN LANDING				CIRCLE-TO-LAND			
MDA(H) 1760' (526')							
ALS out				Max Kts.	MDA(H)		
A	V1 V1600m			90	1820' (544')	V1	V1600m
B				120			
C	V1 1/4	V2000m	V1 1/2	V2400m	140	1820' (544')	V1 1/2 V2400m
D	V1 1/2	V2400m	V1 3/4	V2800m	165	1860' (584')	V2 V3200m

MMMY/MTY GEN MARIANO ESCOBEDO INTL 16 FEB 24 (13-7) Eff 22 Feb VOR W Rwy 30

*ATIS 127.7	MONTERREY Approach (R) 119.75	MONTERREY Arrival 120.4	MONTERREY Tower 118.1	Ground 121.9
VOR MTY 114.7	Final Apch Crs 294°	D6.0 MTY 3000' (1766')	MDA(H) 1760' (526')	Apt Elev 1276' Rwy 1234'
MISSED APCH: Climb outbound on MTY VOR R-268 to D5.0 MTY, then turn LEFT within 8 NM to MTY VOR at the minimum holding altitude.				
Alt Set: IN (MB on req)		Trans level: FL195		
DME required.		Trans alt: 18500'		



Gnd speed-Kts	70	90	100	120	140	160	REIL PAPI 	on 114.7 R-268 MTY D5.0 MTY
Descent Angle	3.01°	373	479	532	639	745		
MAP at MTY VOR or FAF to Threshold	5.4	4:38	3:36	3:14	2:42	2:19		

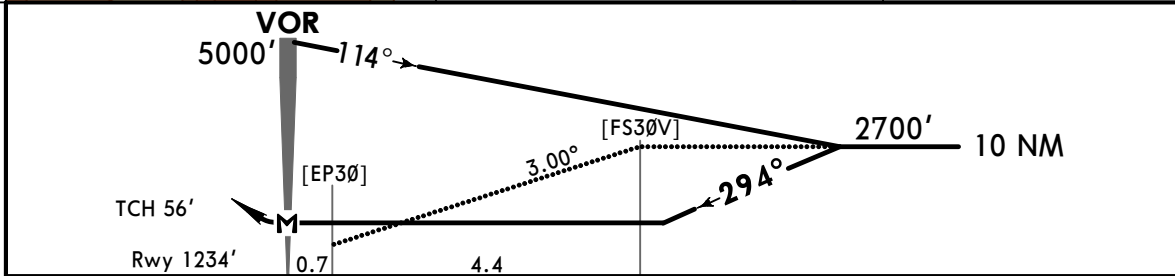
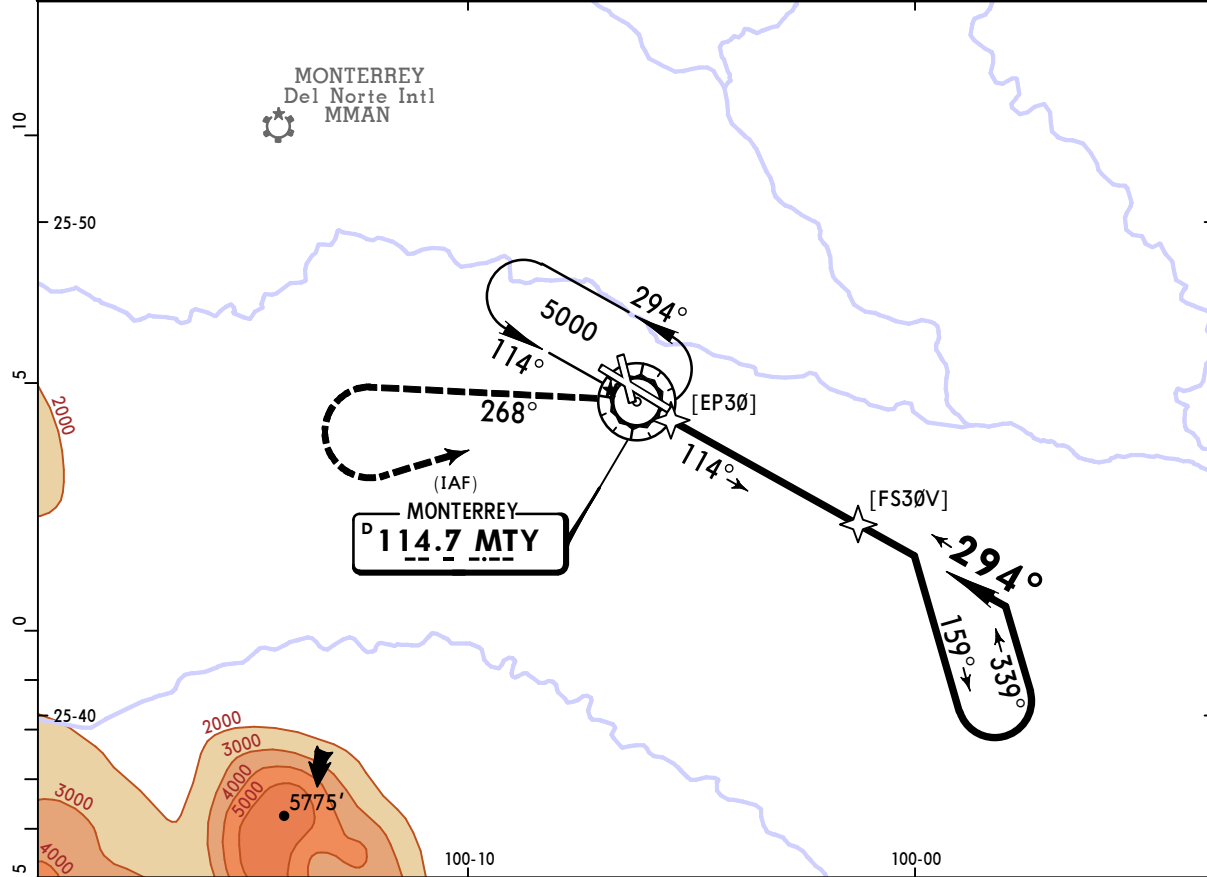
State				STRAIGHT-IN LANDING				CIRCLE-TO-LAND			
MDA(H) 1760' (526')								ALS out			
A	V1			V1600m			Max Kts	MDA(H)			
B	V1			V1600m			90	1820' (544')			
C	V1 1/4	V2000m		V1 1/2	V2400m		140	1820' (544')			
D	V1 1/2	V2400m		V1 3/4	V2800m		165	1860' (584')			

MMMY/MTY
GEN MARIANO ESCOBEDO INTL

JEPPESEN
 16 FEB 24
Eff 22 Feb (13-8)

MONTERREY, MEXICO
VOR V Rwy 30

*ATIS 127.7	MONTERREY Approach (R) 119.75	MONTERREY Arrival 120.4	MONTERREY Tower 118.1	Ground 121.9																	
VOR MTY 114.7	Final Apch Crs 294°	No FAF	MDA(H) 1820' (586')	Apt Elev 1276' Rwy 1234'																	
MISSED APCH: Climb outbound on MTY VOR R-268, then turn LEFT within 8 NM to MTY VOR at the minimum holding altitude.																					
<table border="1"> <tr> <td>Gnd speed-Kts</td> <td>80</td><td>100</td><td>120</td><td>140</td><td>160</td><td>180</td><td>200</td> </tr> <tr> <td>Max Outbound Distance</td> <td>5.0</td><td>3:45</td><td>3:00</td><td>2:30</td><td>2:09</td><td>1:53</td><td>1:40</td><td>1:30</td> </tr> </table>		Gnd speed-Kts	80	100	120	140	160	180	200	Max Outbound Distance	5.0	3:45	3:00	2:30	2:09	1:53	1:40	1:30	Alt Set: IN (MB on req) Trans level: FL195 Trans alt: 18500'		MSA MTY VOR
Gnd speed-Kts	80	100	120	140	160	180	200														
Max Outbound Distance	5.0	3:45	3:00	2:30	2:09	1:53	1:40	1:30													



Gnd speed-Kts	70	90	100	120	140	160	ALS REIL PAPI	MTY on 114.7 R-268
Descent Angle 3.00°	372	478	531	637	743	849		
MAP at VOR								

State	STRAIGHT-IN LANDING				CIRCLE-TO-LAND				
	MDA(H) 1820' (586')								
	ALS out				Max Kts	MDA(H)			
A	V1 V1600m				90	1820' (544') V1 V1600m			
B	V1 V1600m				120	1820' (544') V1 V1600m			
C	V1 1/4	V2000m	V1 1/2	V2400m	140	1820' (544')	V1 1/2	V2400m	
D	V1 1/2	V2400m	V1 3/4	V2800m	165	1860' (584')	V2	V3200m	

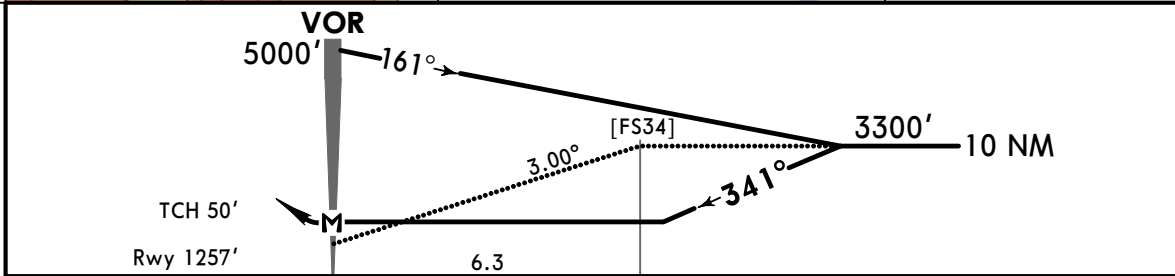
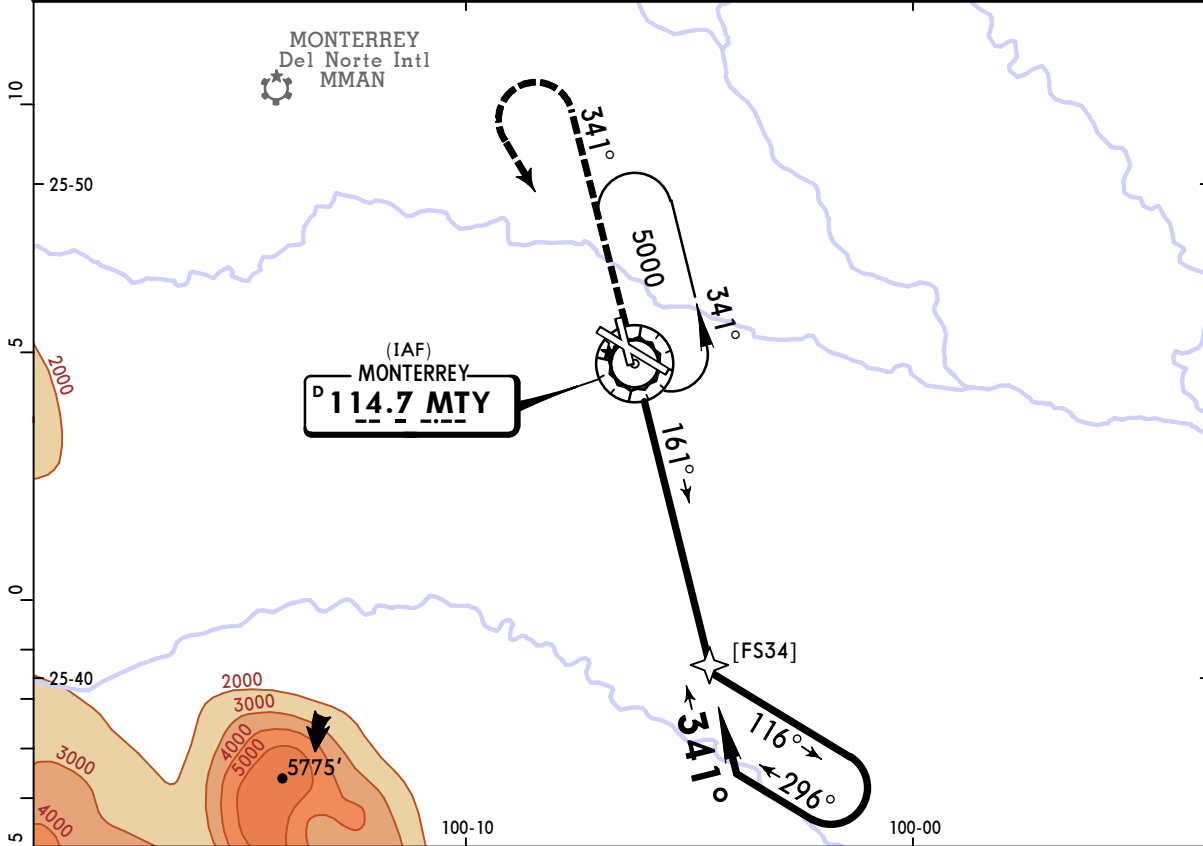
MMY/MTY
GEN MARIANO ESCOBEDO INTL

16 FEB 24
Eff 22 Feb

JEPPesen
13-9

MONTERREY, MEXICO
CAT A, B & C VOR Rwy 34

*ATIS 127.7	MONTERREY Approach (R) 119.75	MONTERREY Arrival 120.4	MONTERREY Tower 118.1	Ground 121.9				
VOR MTY 114.7	Final Apch Crs 341°	No FAF	MDA(H) 1760' (503')	Apt Elev 1276' Rwy 1257'				
MISSED APCH: Climb outbound on MTY VOR R-341, then turn LEFT within 10 NM to MTY VOR at the minimum holding altitude.								
Gnd speed-Kts	80	100	120		140	160	180	200
Max Outbound Distance	7.0	5:15	4:12		3:30	3:00	2:37	2:06
Alt Set: IN (MB on req)		Trans level: FL195		Trans alt: 18500'		MSA MTY VOR		



Gnd speed-Kts	70	90	100	120	140	160	
Descent Angle 3.00°	372	478	531	637	743	849	
MAP at VOR							

State		STRAIGHT-IN LANDING		CIRCLE-TO-LAND	
		MDA(H) 1760' (503')		Max Kts	
A	V1	V1600m	90	1820' (544')	V1 V1600m
B	V1 1/2	V2400m	120	1820' (544')	V1 1/2 V2400m
C	NOT APPLICABLE		D	NOT APPLICABLE	